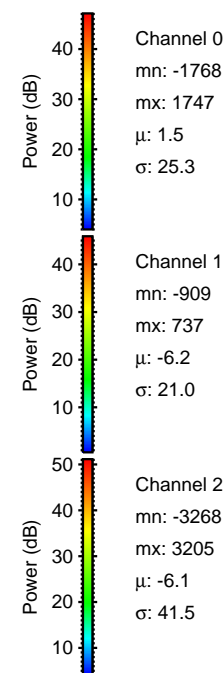
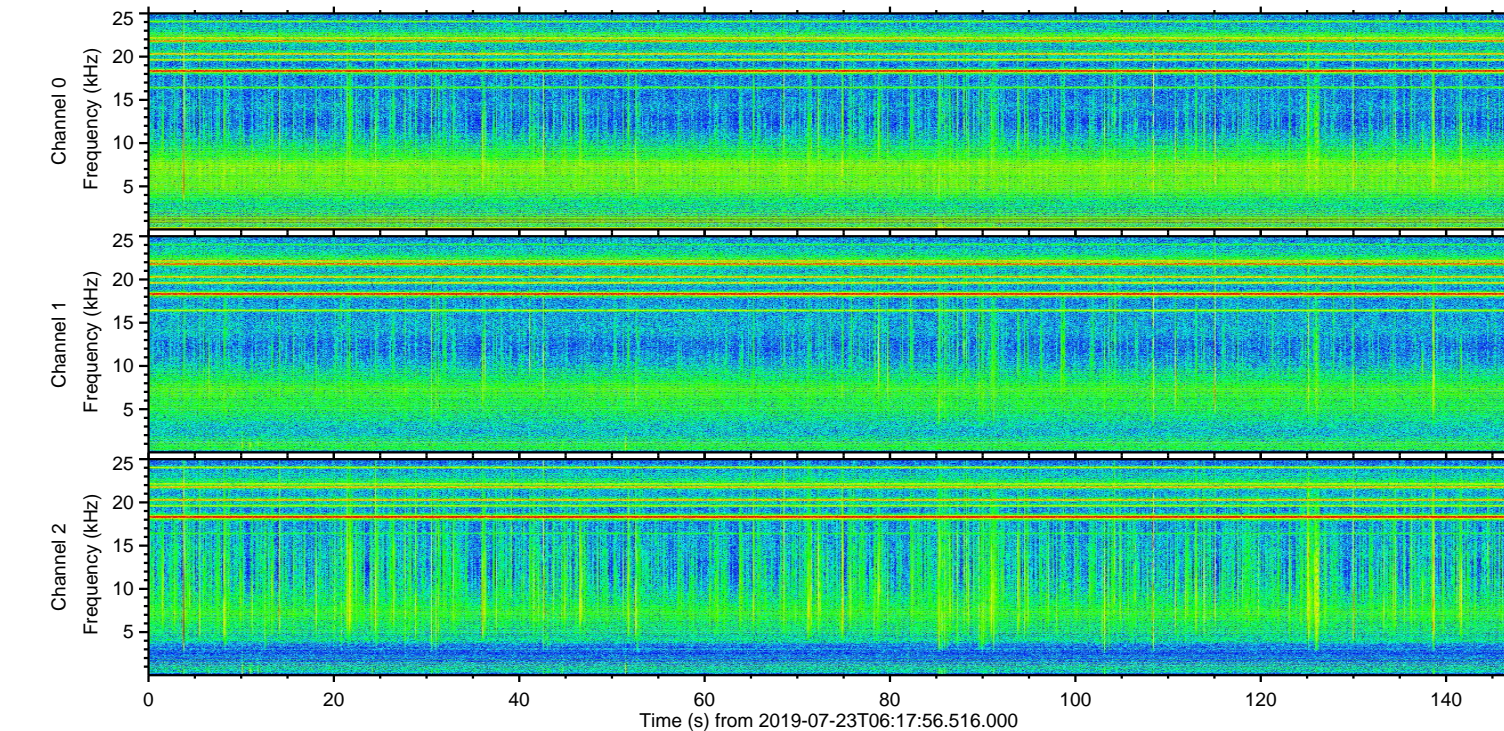
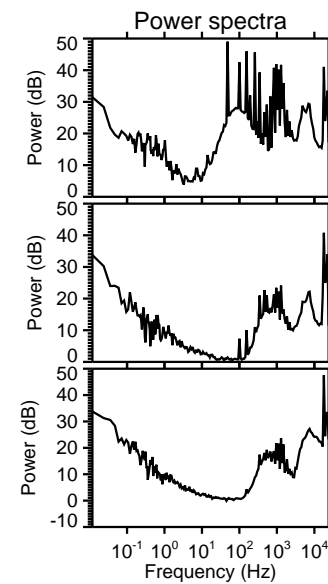
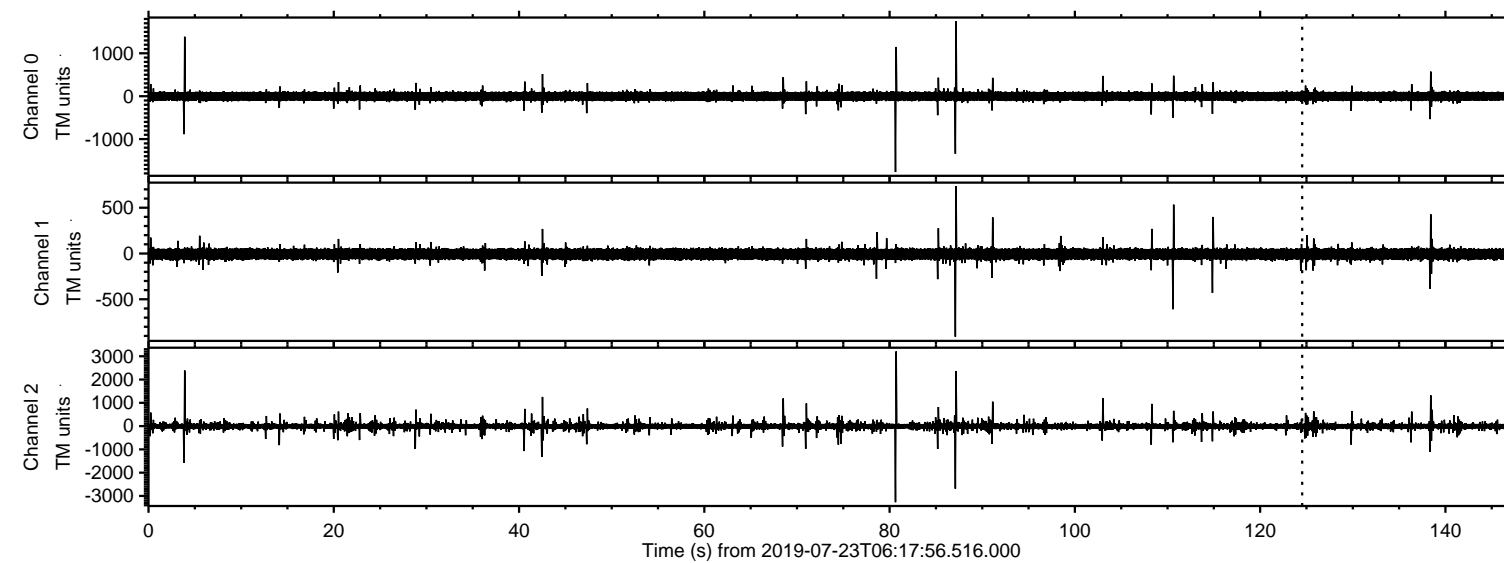
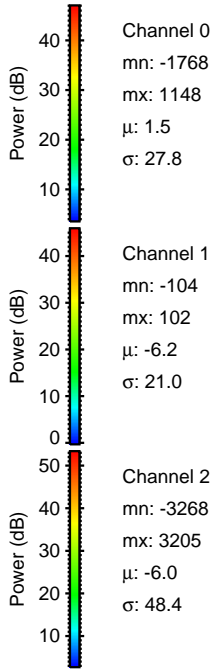
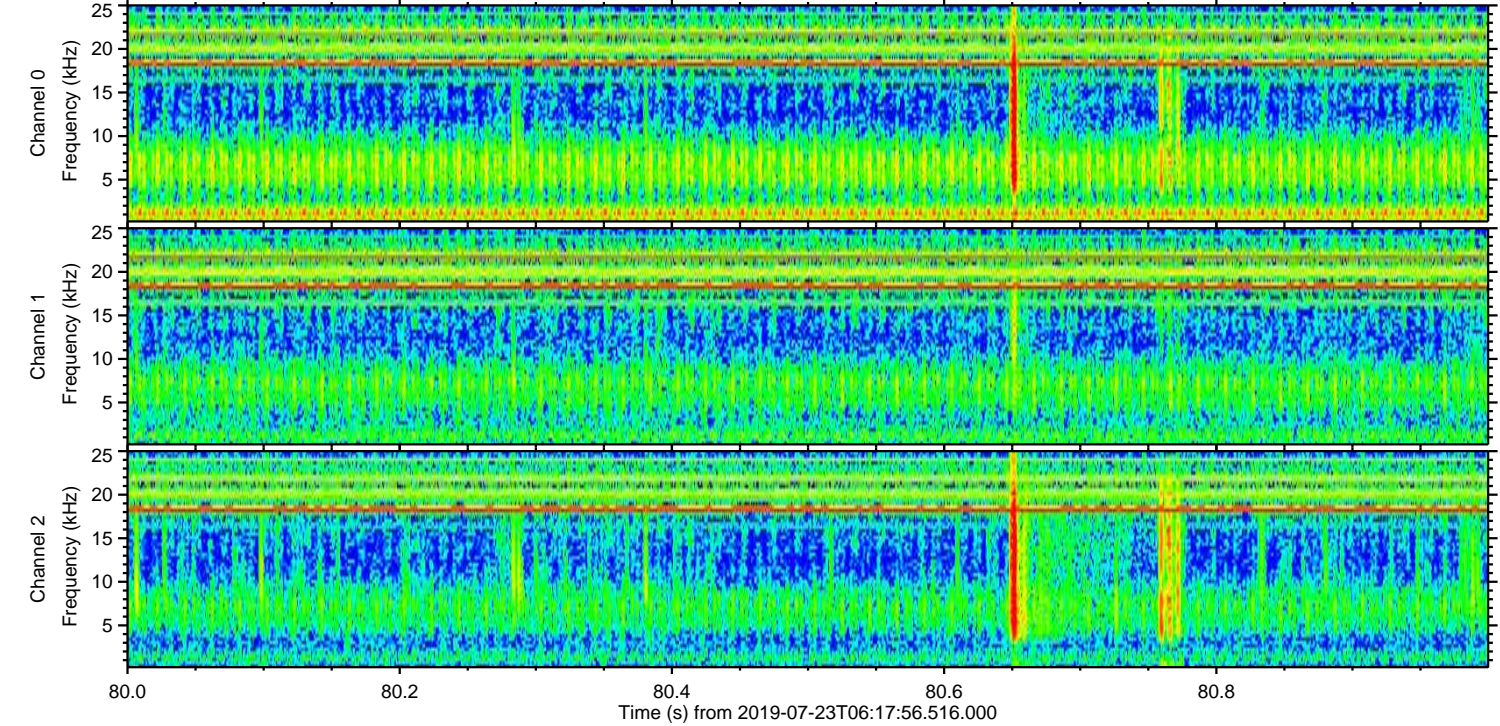
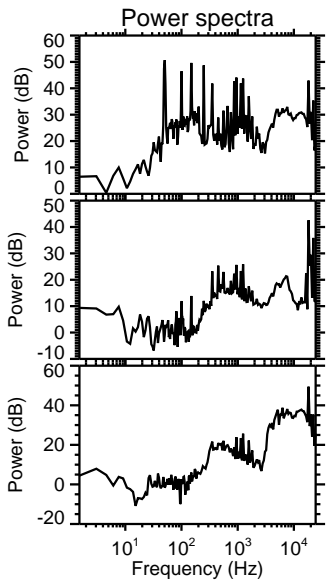
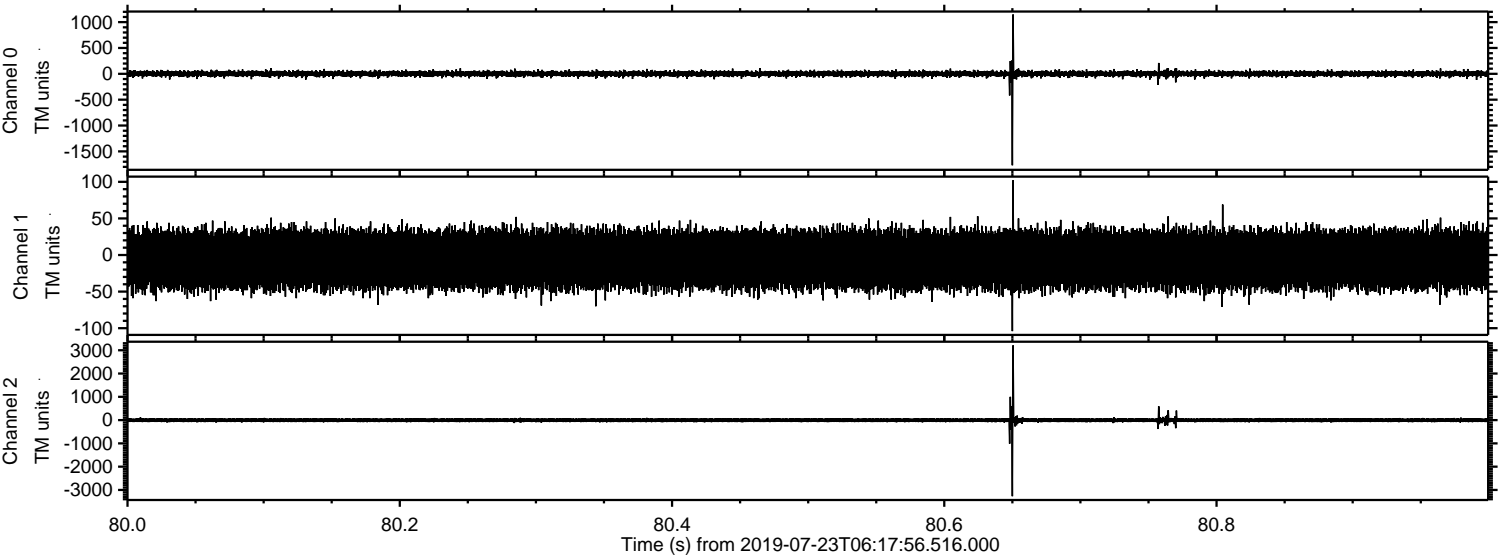


ELMAVAN 3D WAVEFORMS (Measured data sampled at 50 kHz) 50999 packets of 144 samples from 2019-07-23T06:17:56.516.000.

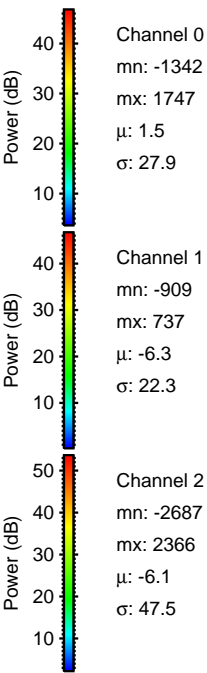
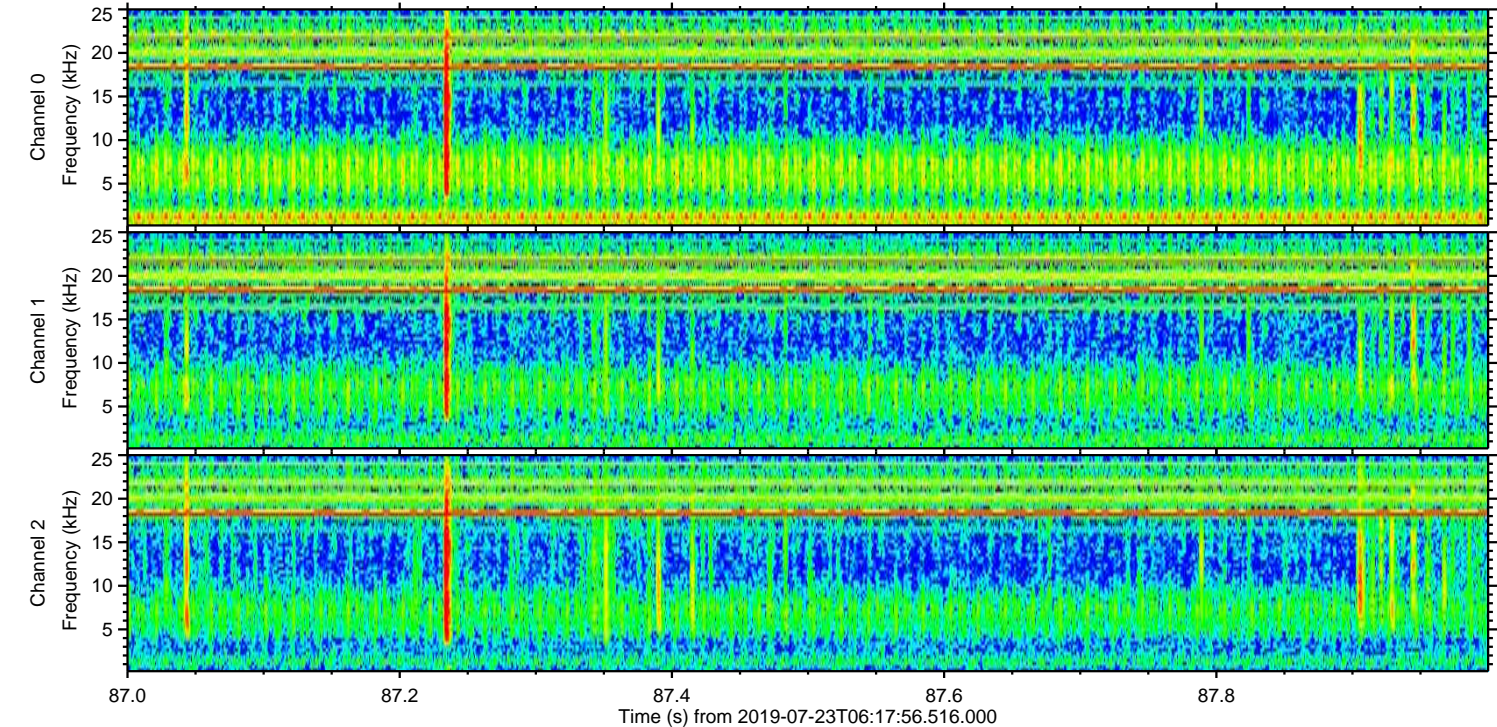
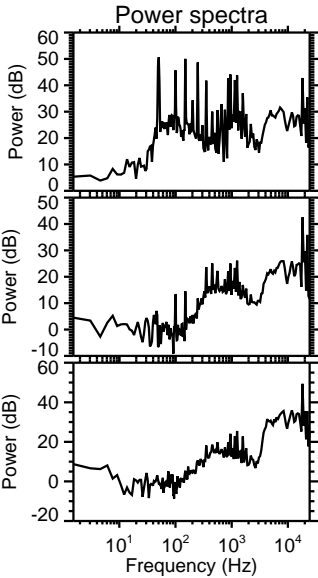
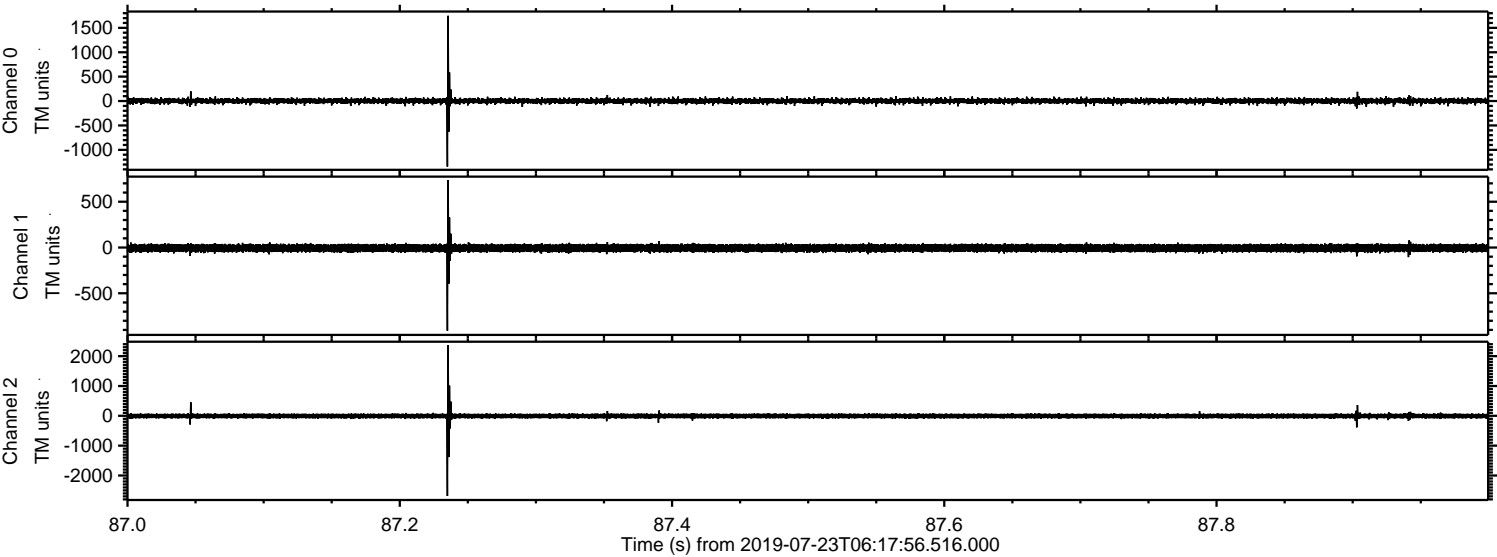
Processed Tue Jul 23 08:25:21 2019 by ELM ver.2012-10-06 from 001__elm20190723_061755__dat00.bin



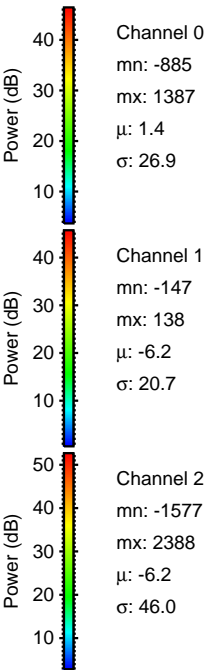
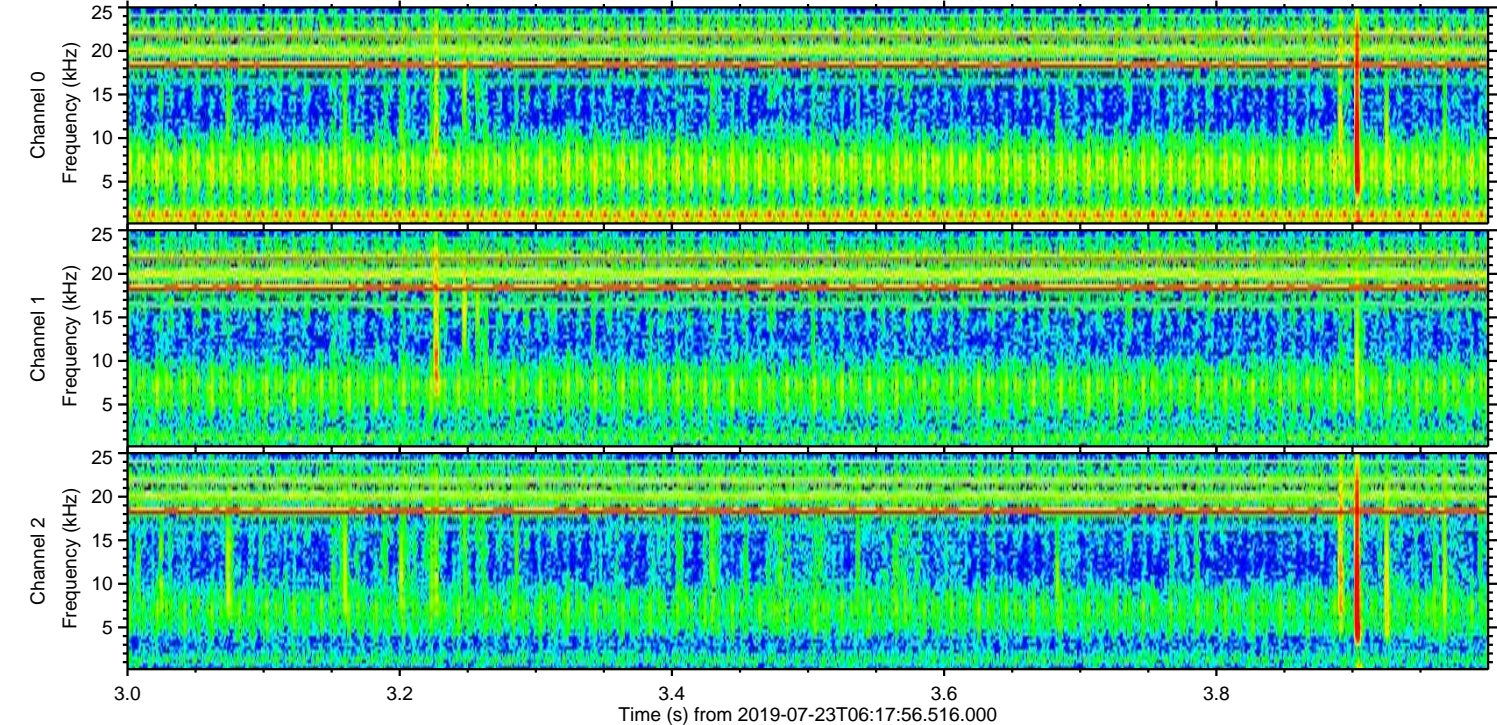
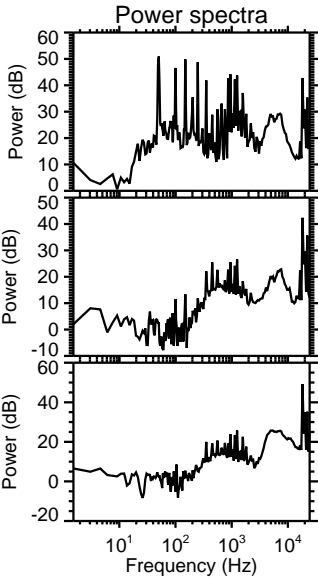
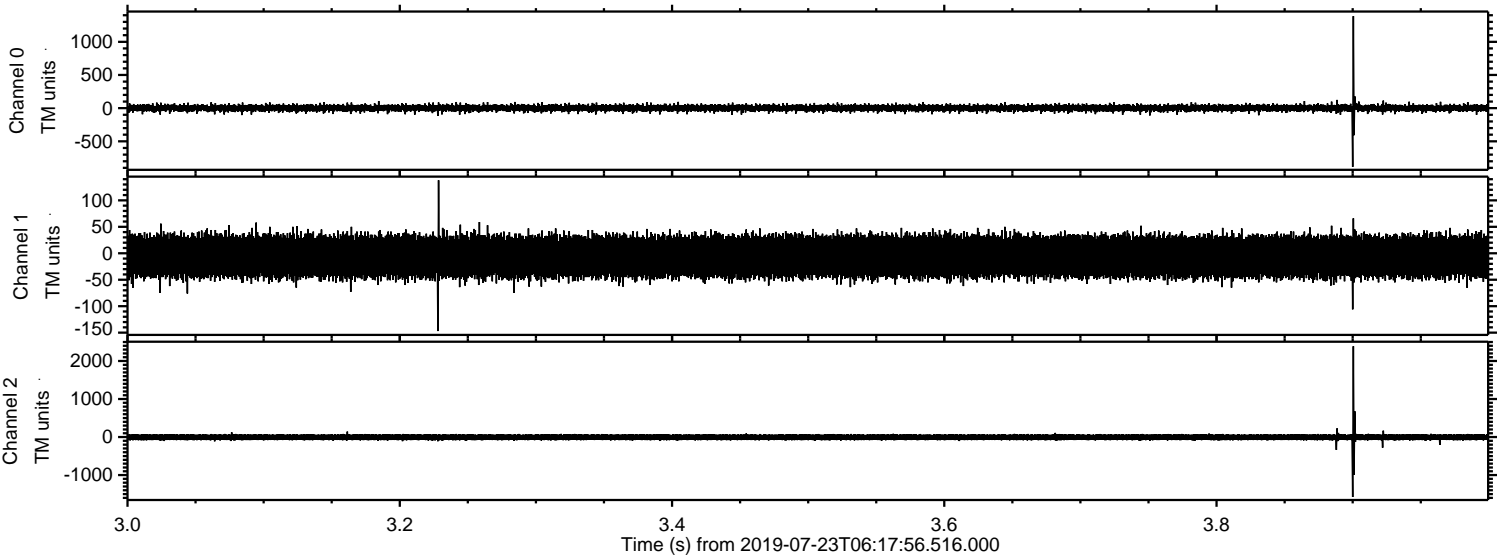
Processed Tue Jul 23 08:25:29 2019 by ELM ver.2012-10-06 from 001__elm20190723_061755__dat00.bin



Processed Tue Jul 23 08:25:30 2019 by ELM ver.2012-10-06 from 001__elm20190723_061755__dat00.bin



Processed Tue Jul 23 08:25:31 2019 by ELM ver.2012-10-06 from 001__elm20190723_061755__dat00.bin

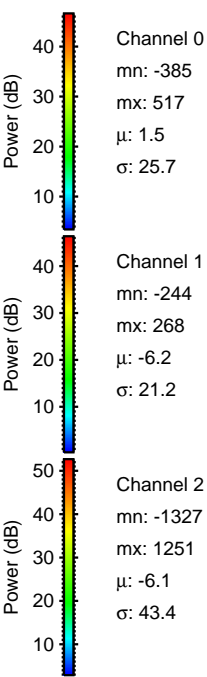
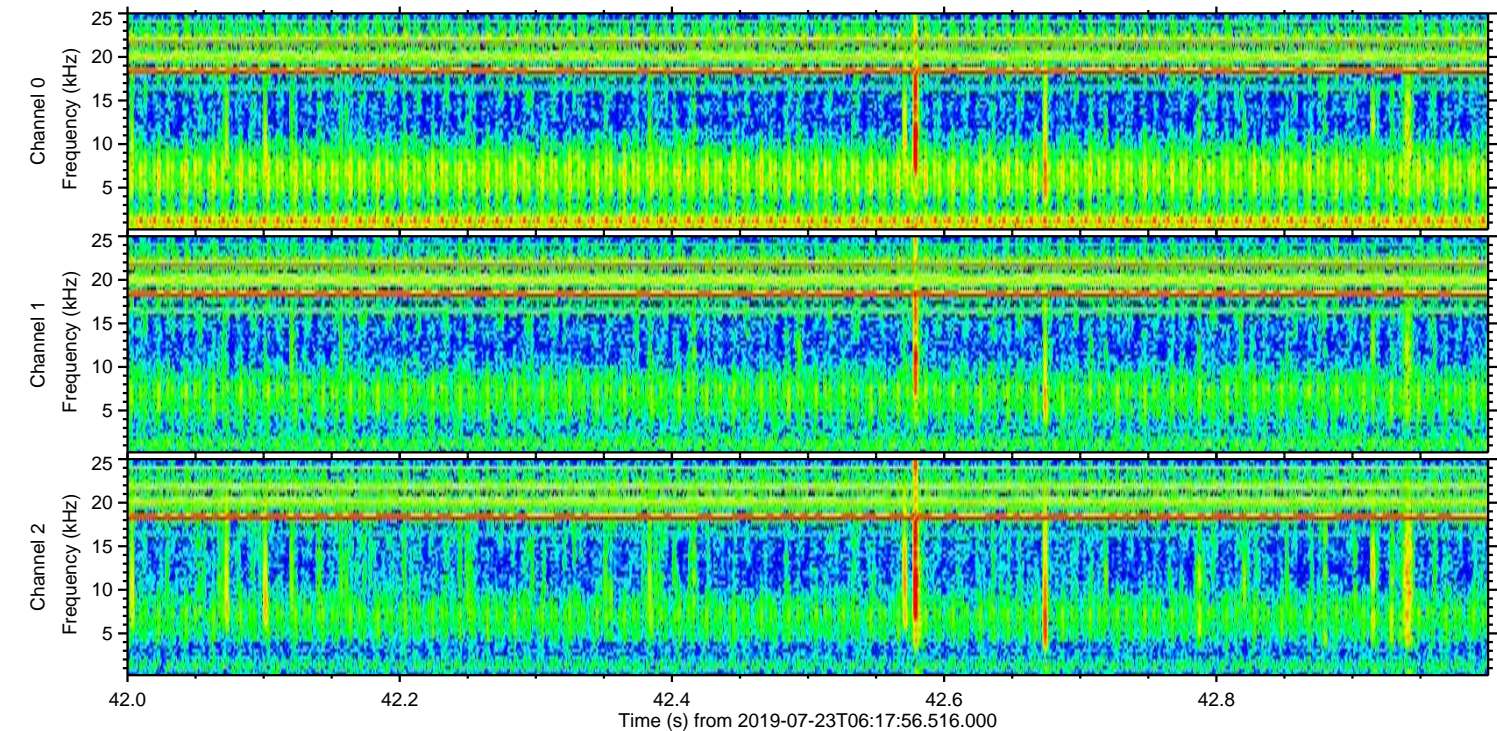
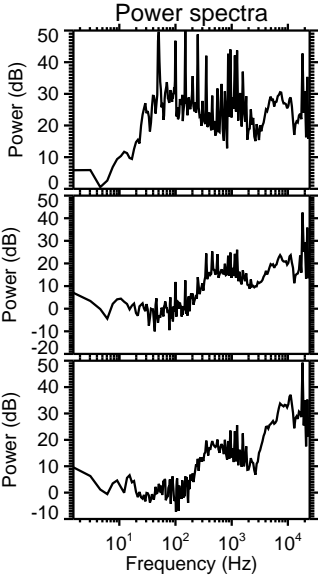
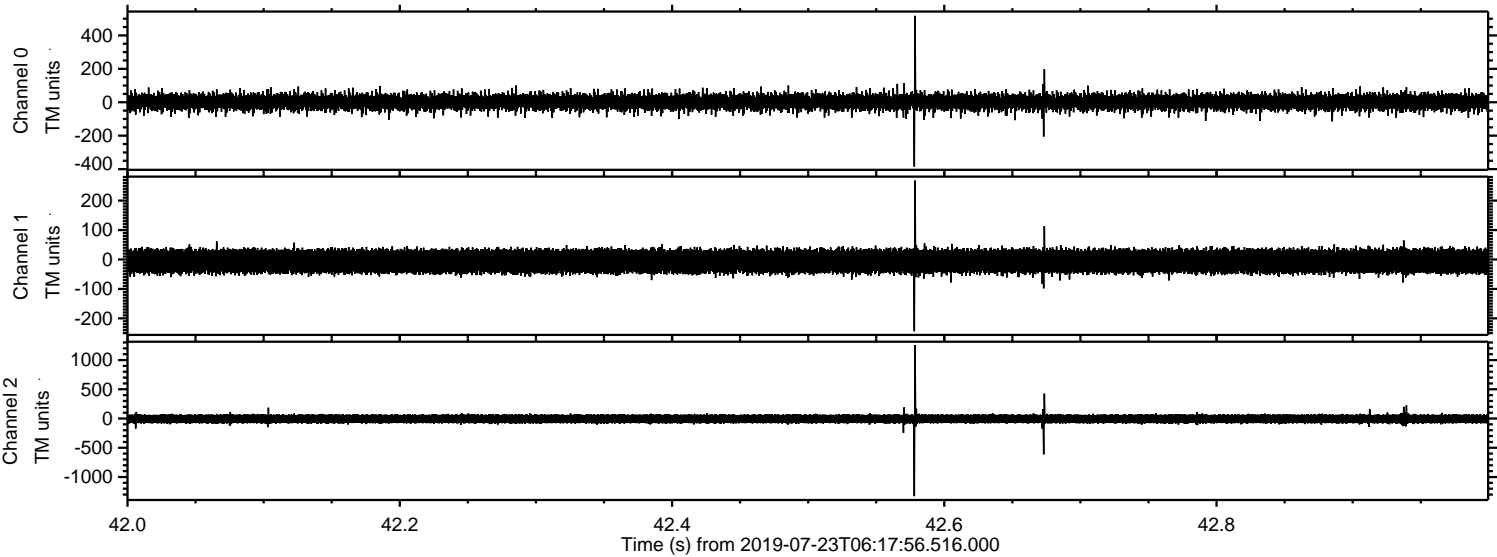


Channel 0
mn: -885
mx: 1387
 μ : 1.4
 σ : 26.9

Channel 1
mn: -147
mx: 138
 μ : -6.2
 σ : 20.7

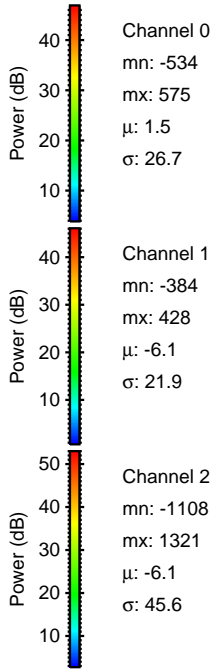
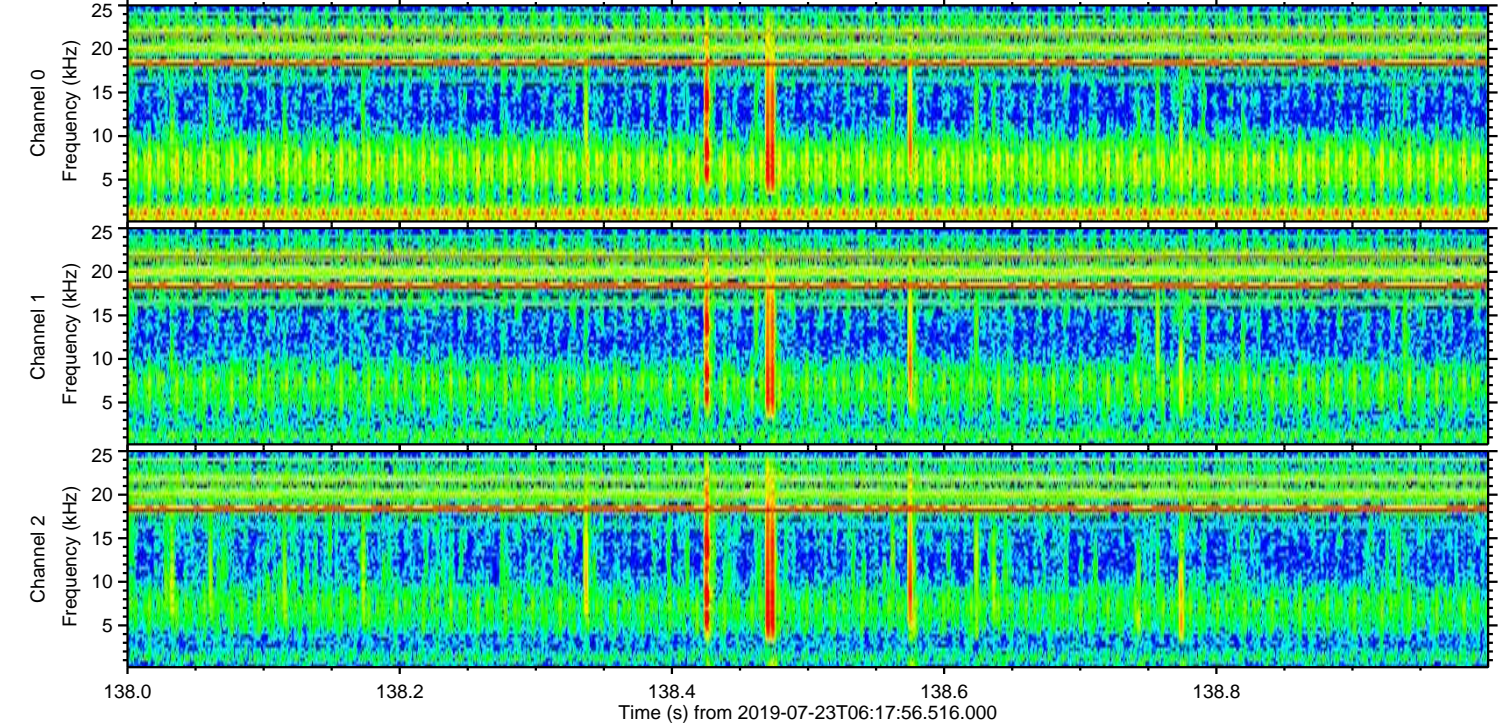
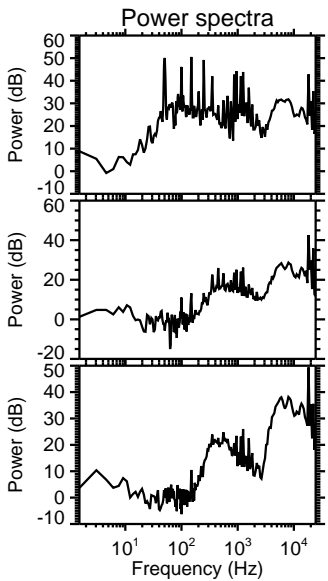
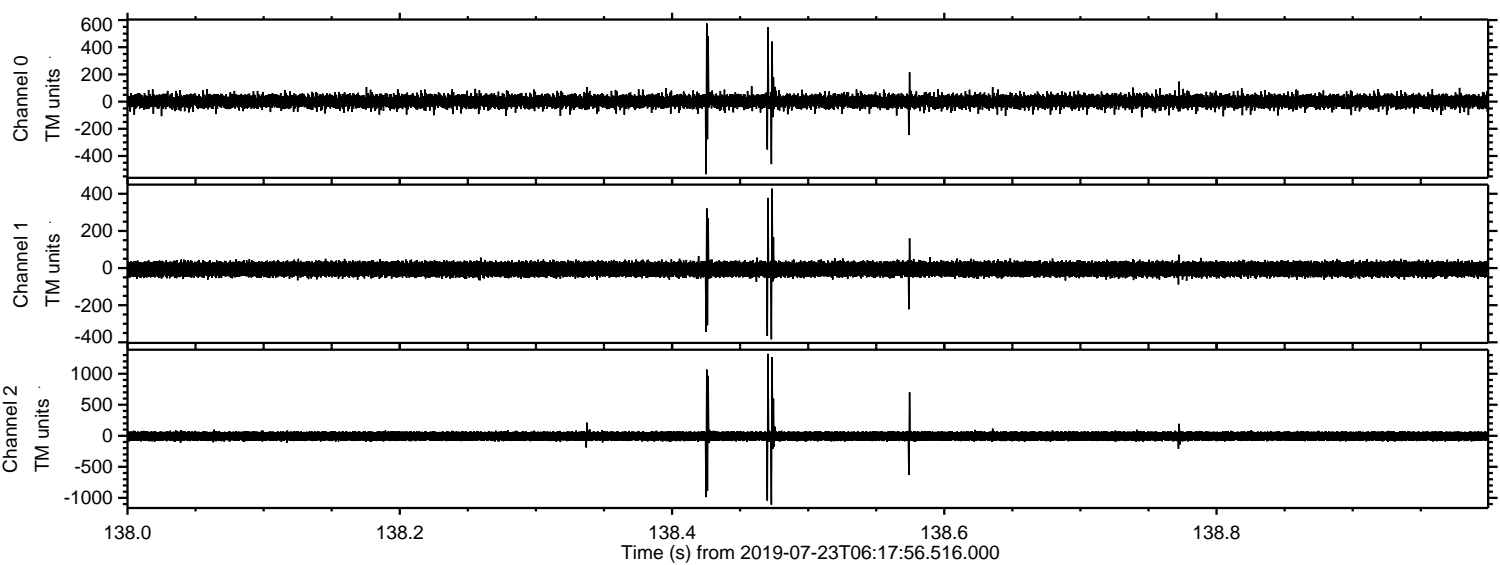
Channel 2
mn: -1577
mx: 2388
 μ : -6.2
 σ : 46.0

Processed Tue Jul 23 08:25:31 2019 by ELM ver.2012-10-06 from 001__elm20190723_061755__dat00.bin



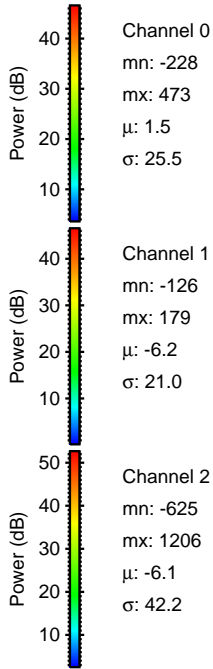
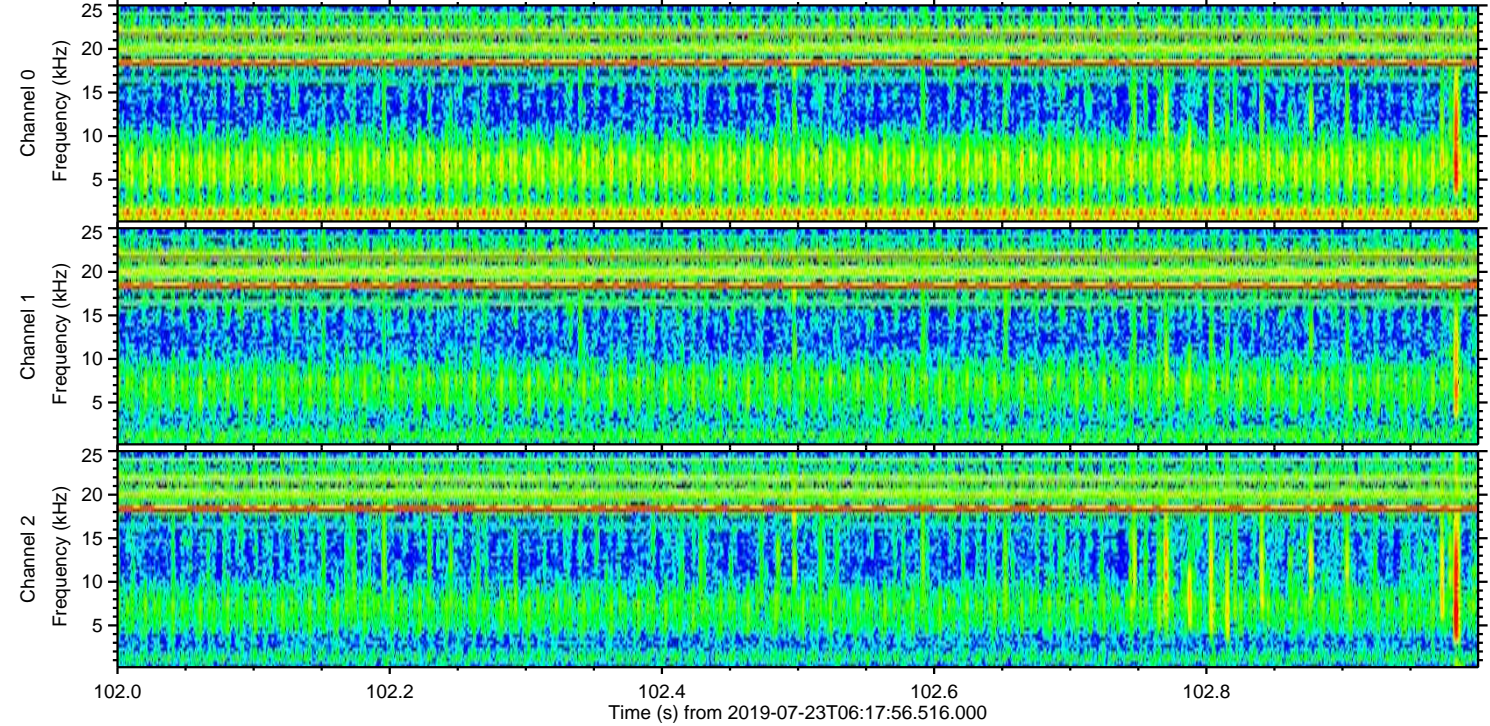
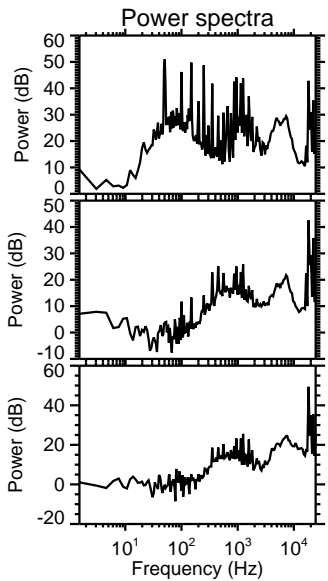
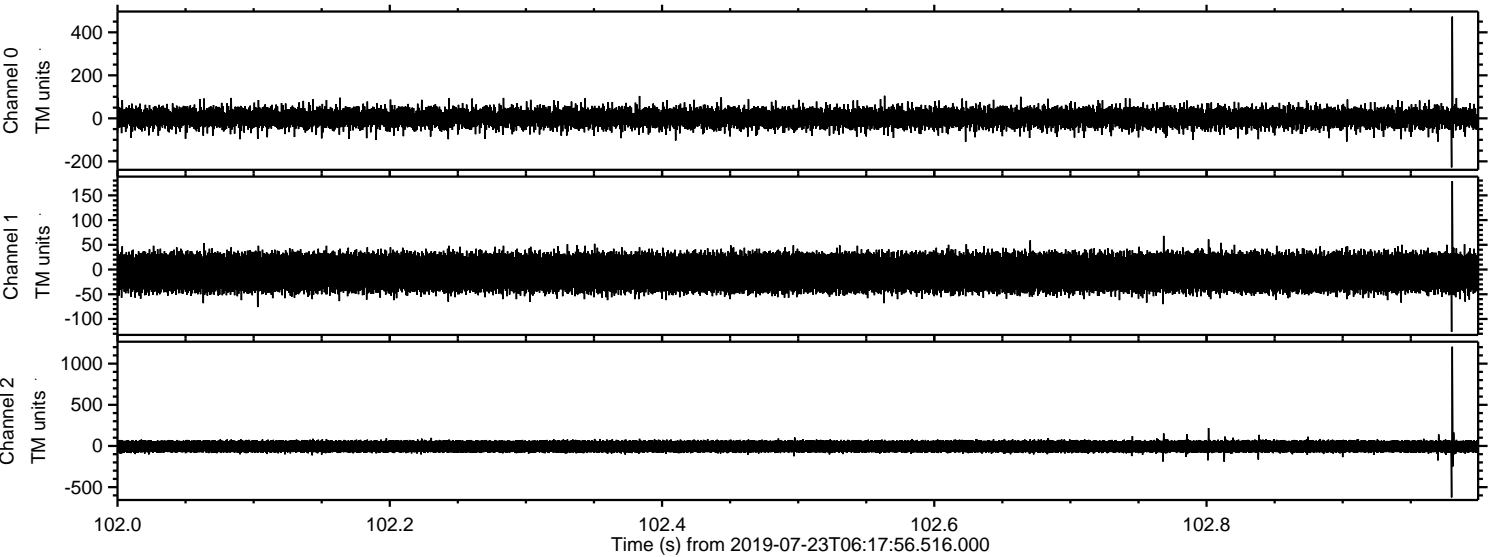
ELMAVAN 3D WAVEFORMS (Measured data sampled at 50 kHz) 50999 packets of 144 samples from 2019-07-23T06:17:56.516.000. Part 139/147

Processed Tue Jul 23 08:25:32 2019 by ELM ver.2012-10-06 from 001__elm20190723_061755__dat00.bin

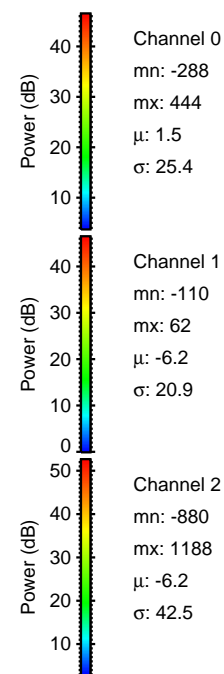
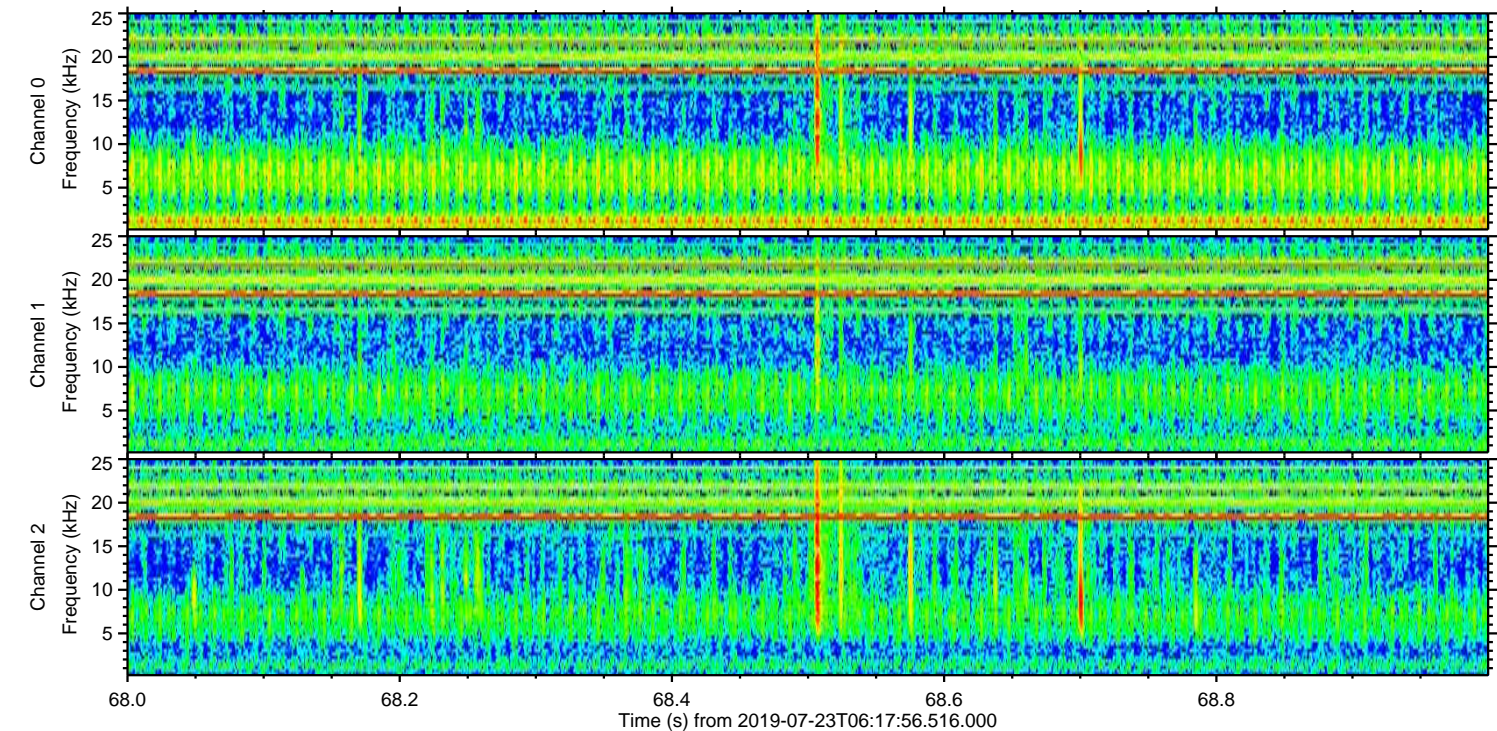
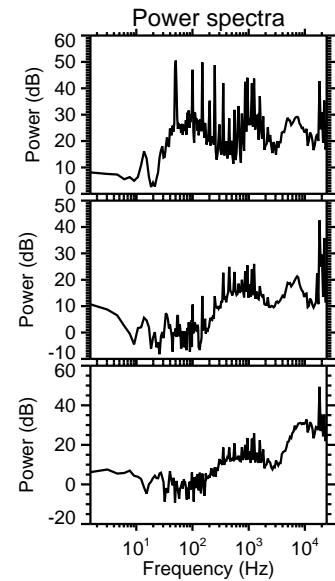
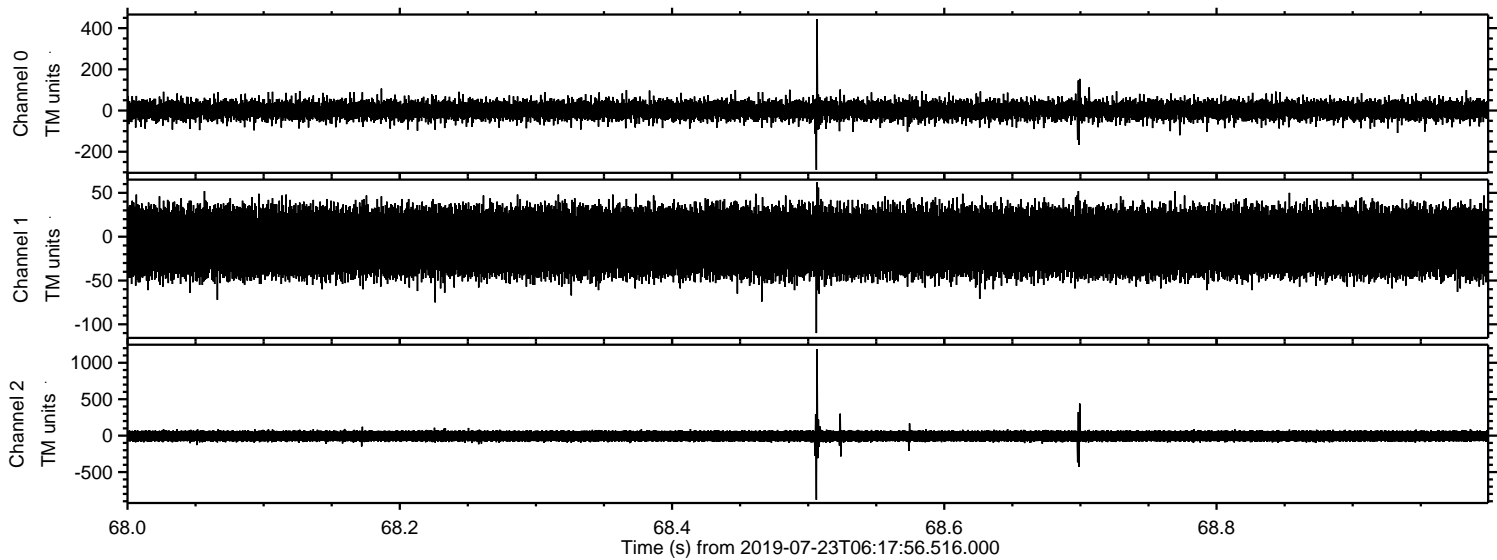


ELMAVAN 3D WAVEFORMS (Measured data sampled at 50 kHz) 50999 packets of 144 samples from 2019-07-23T06:17:56.516.000. Part 103/147

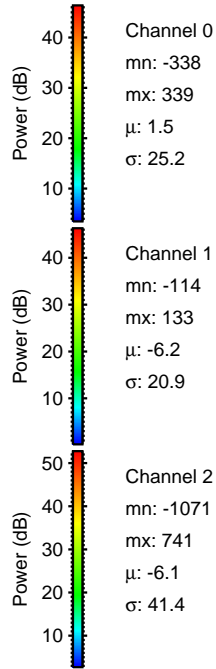
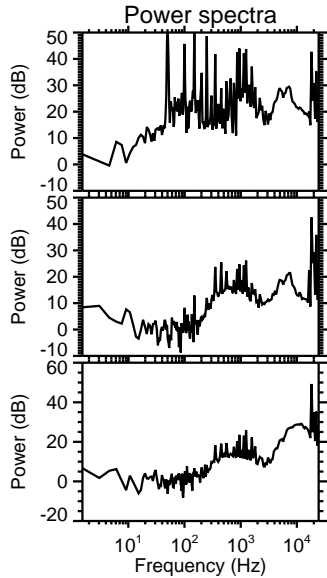
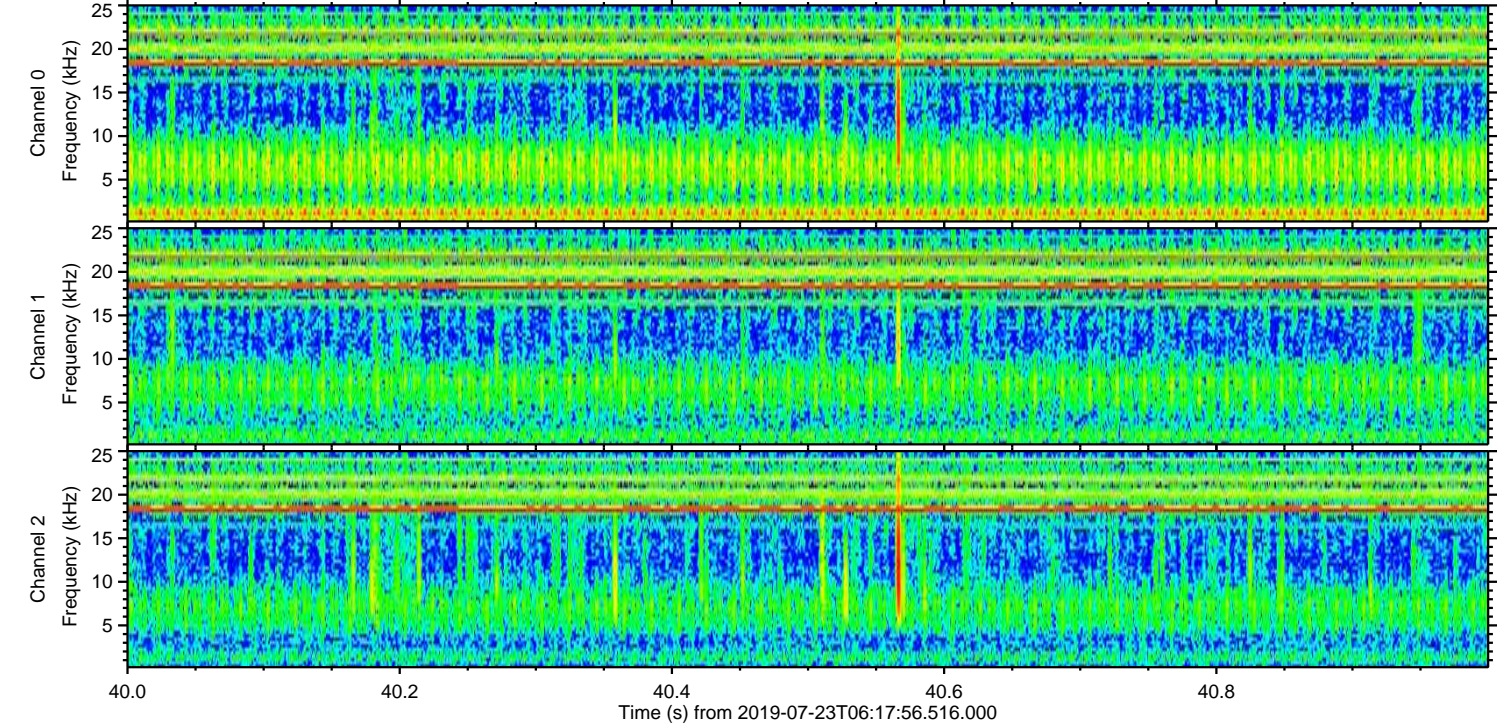
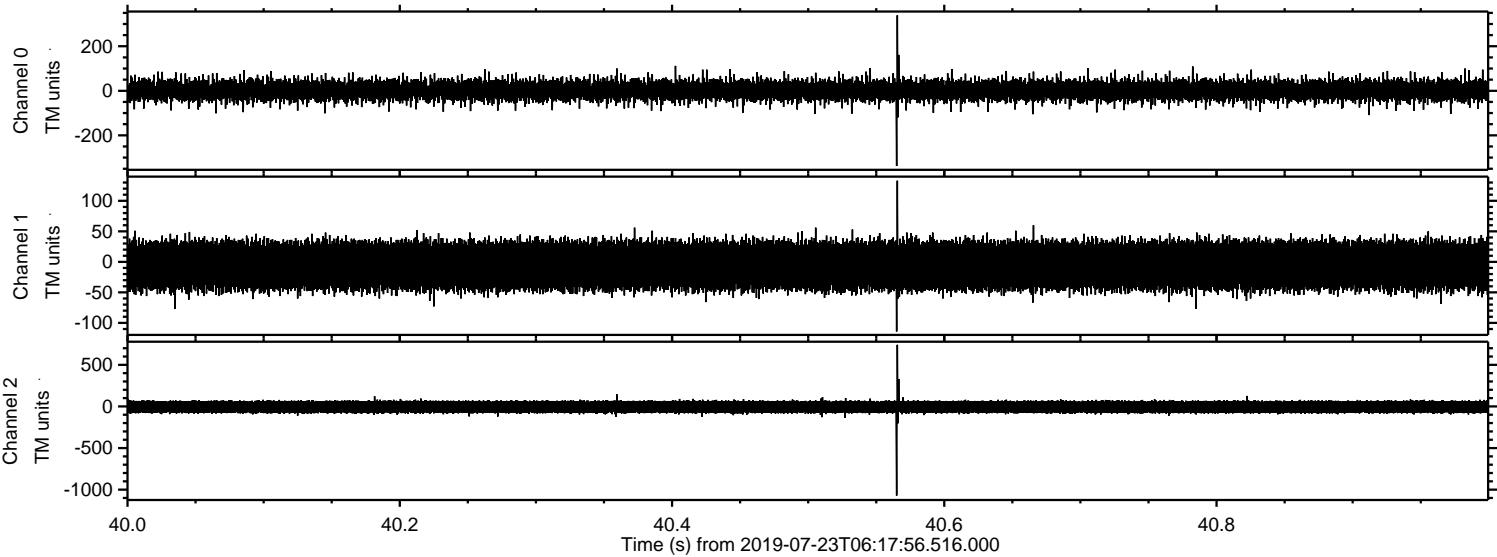
Processed Tue Jul 23 08:25:32 2019 by ELM ver.2012-10-06 from 001__elm20190723_061755__dat00.bin



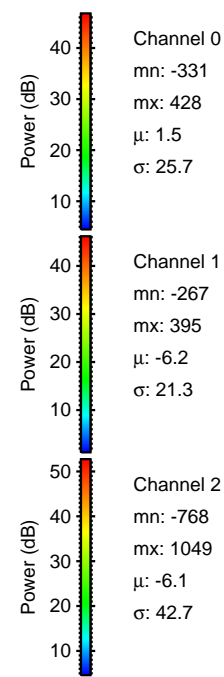
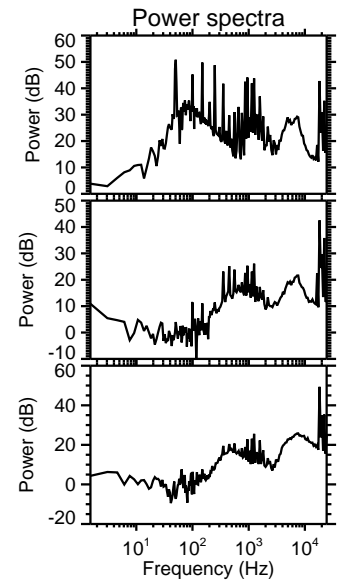
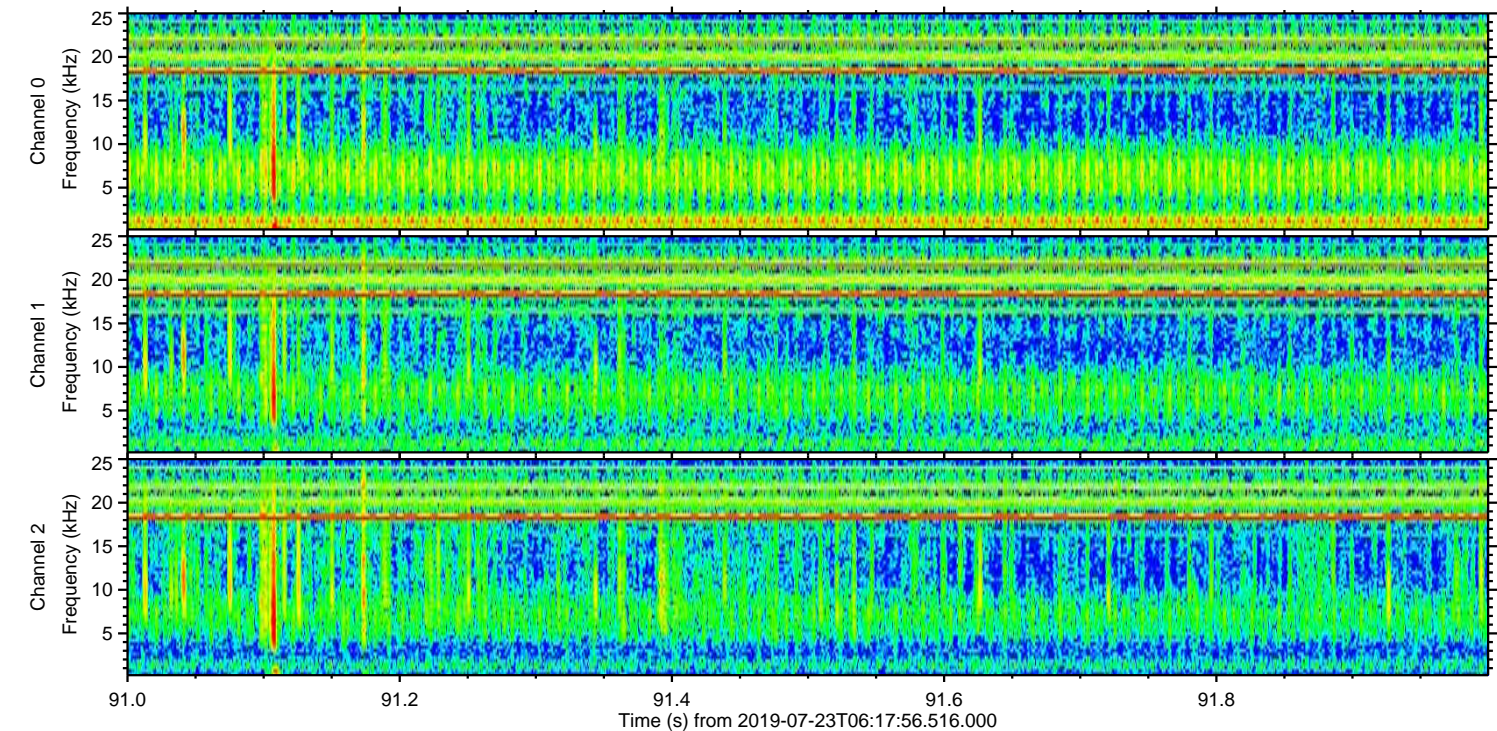
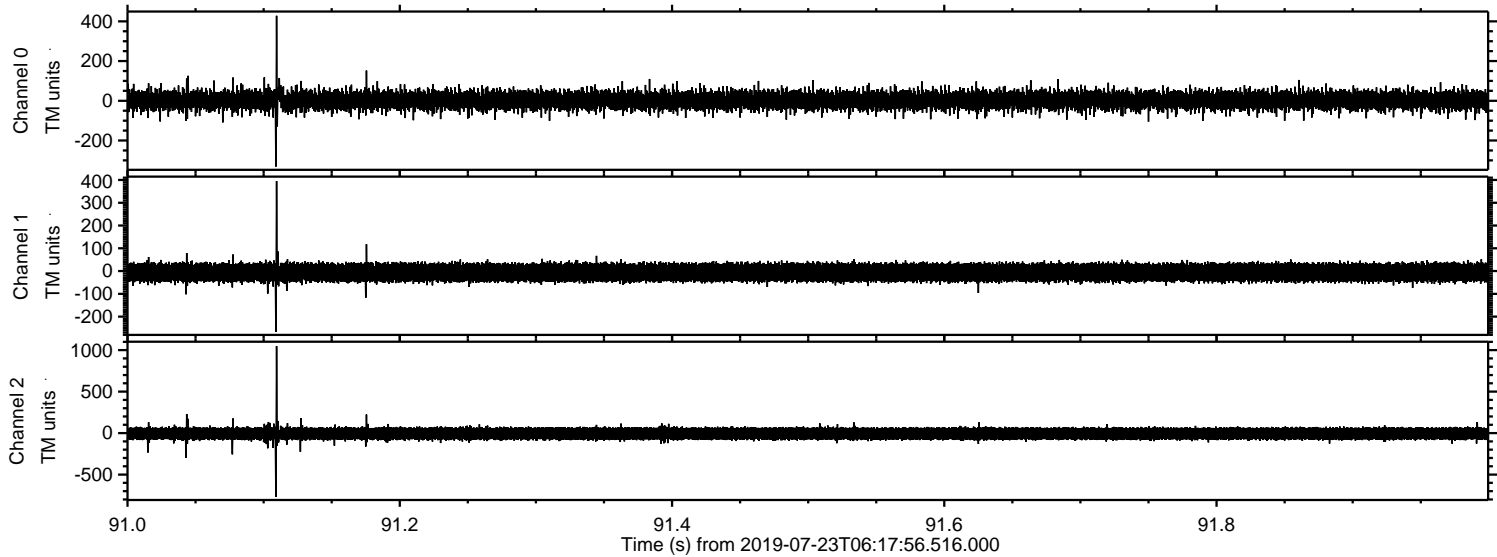
Processed Tue Jul 23 08:25:33 2019 by ELM ver.2012-10-06 from 001__elm20190723_061755__dat00.bin



Processed Tue Jul 23 08:25:34 2019 by ELM ver.2012-10-06 from 001__elm20190723_061755__dat00.bin



Processed Tue Jul 23 08:25:35 2019 by ELM ver.2012-10-06 from 001__elm20190723_061755__dat00.bin



Power spectra

Channel 0
mn: -331
mx: 428
 μ : 1.5
 σ : 25.7

Channel 1
mn: -267
mx: 395
 μ : -6.2
 σ : 21.3

Channel 2
mn: -768
mx: 1049
 μ : -6.1
 σ : 42.7

Processed Tue Jul 23 08:25:35 2019 by ELM ver.2012-10-06 from 001__elm20190723_061755__dat00.bin

