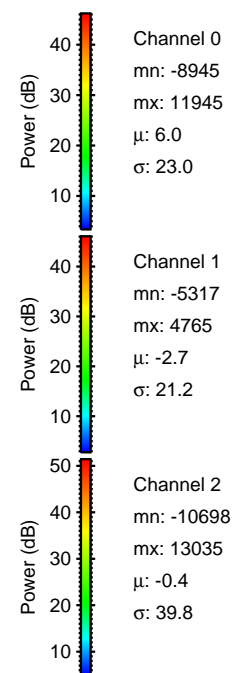
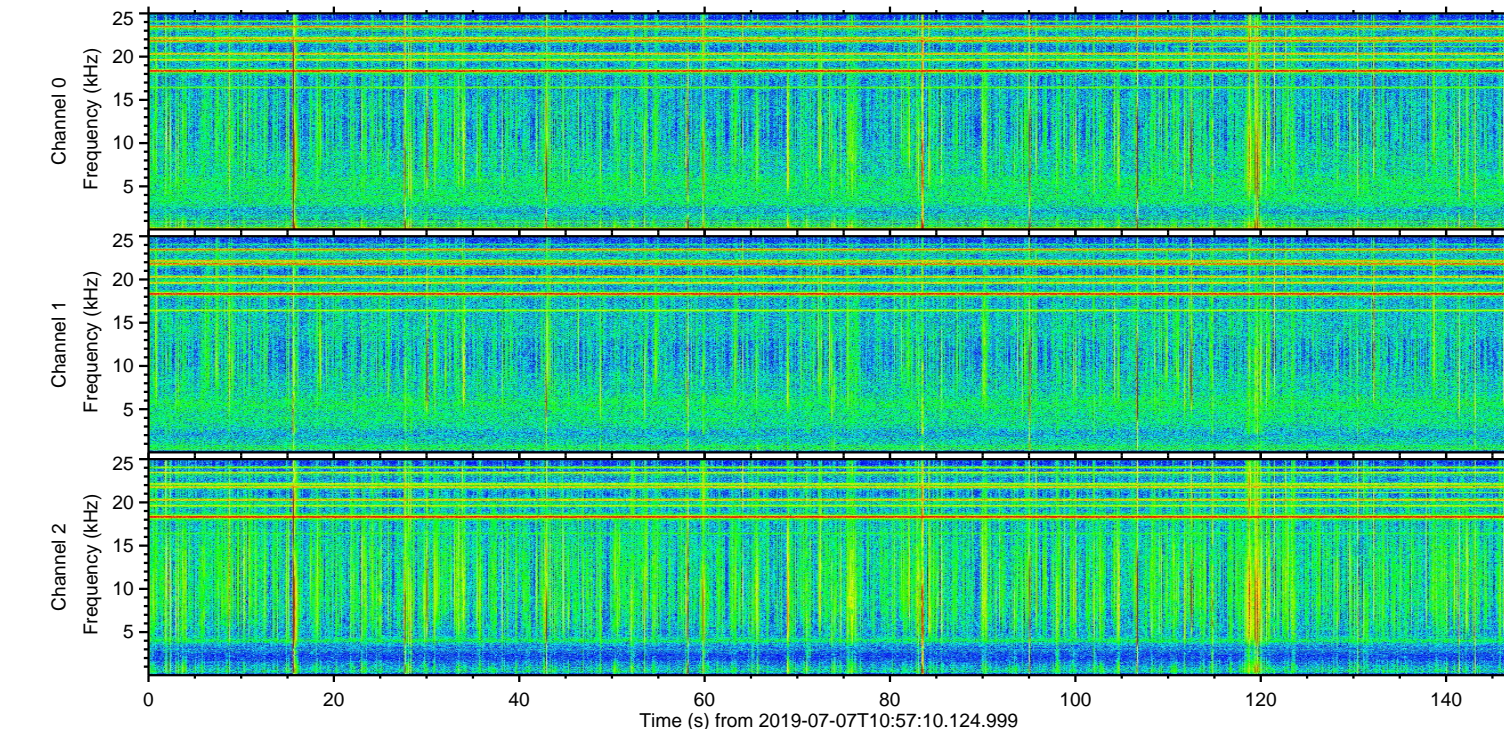
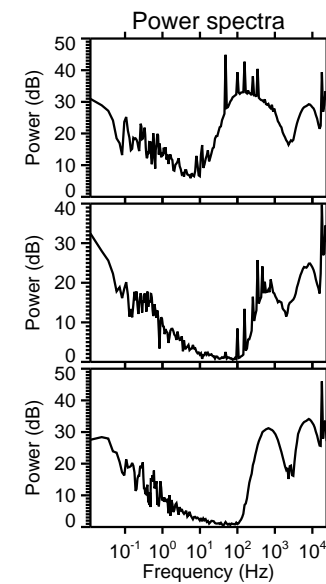
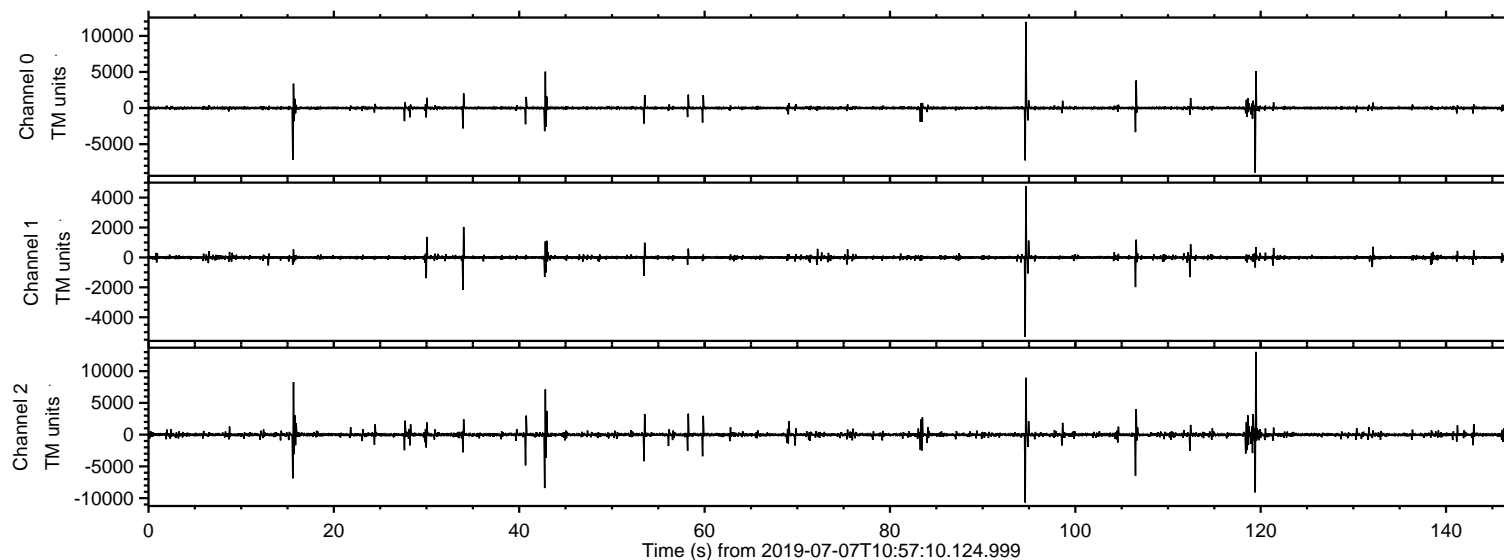


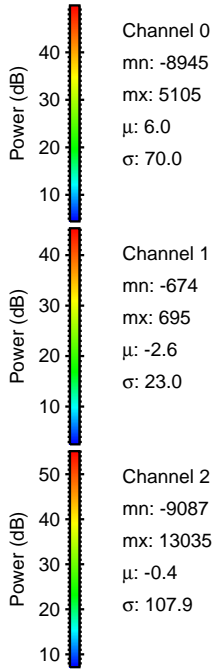
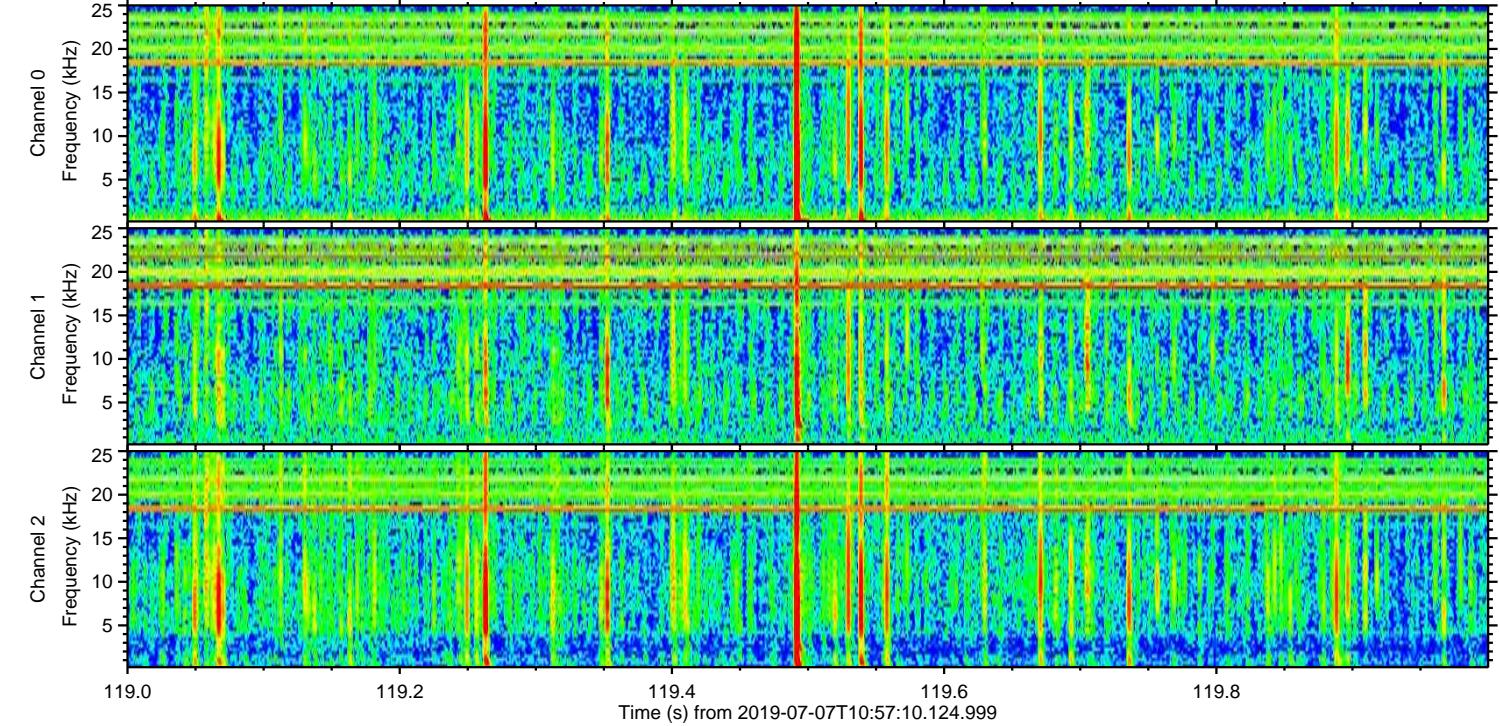
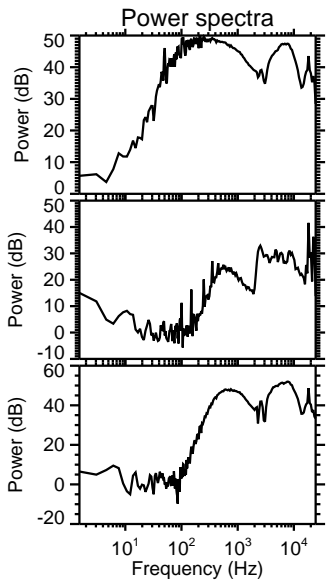
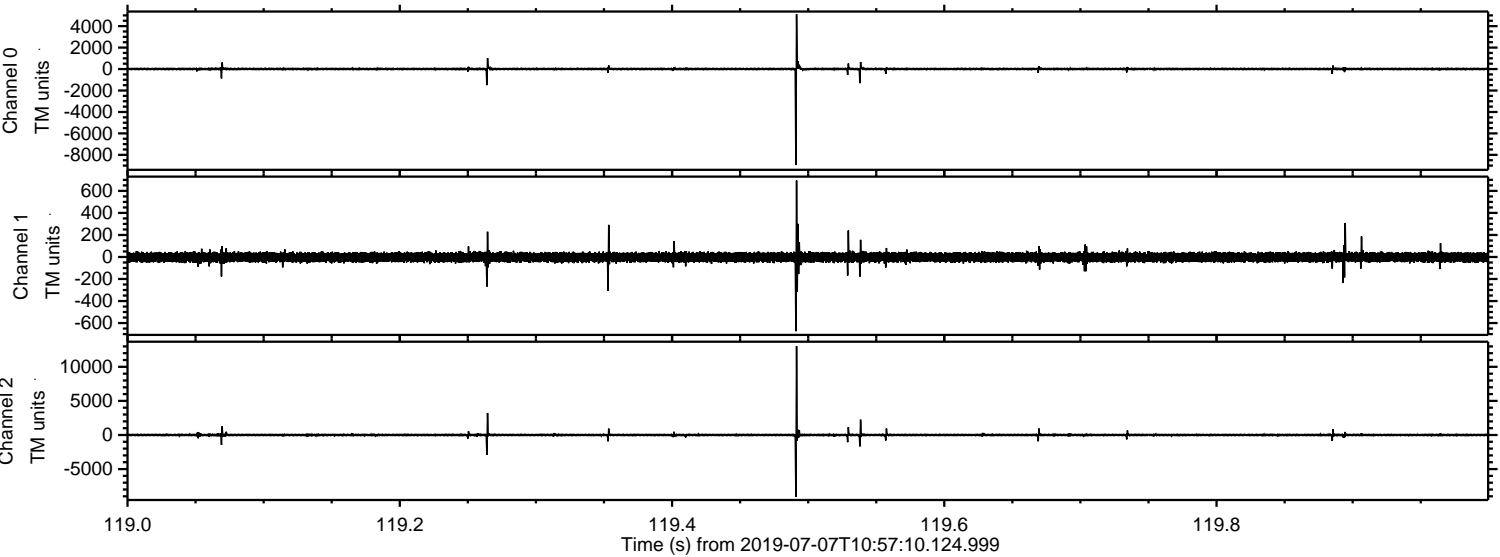
ELMAVAN 3D WAVEFORMS (Measured data sampled at 50 kHz) 51000 packets of 144 samples from 2019-07-07T10:57:10.124.999.

Processed Sun Jul 7 13:05:14 2019 by ELM ver.2012-10-06 from 001__elm20190707_105709__dat00.bin

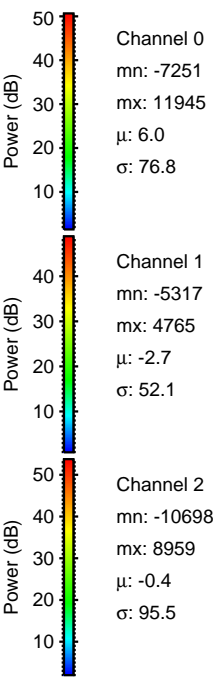
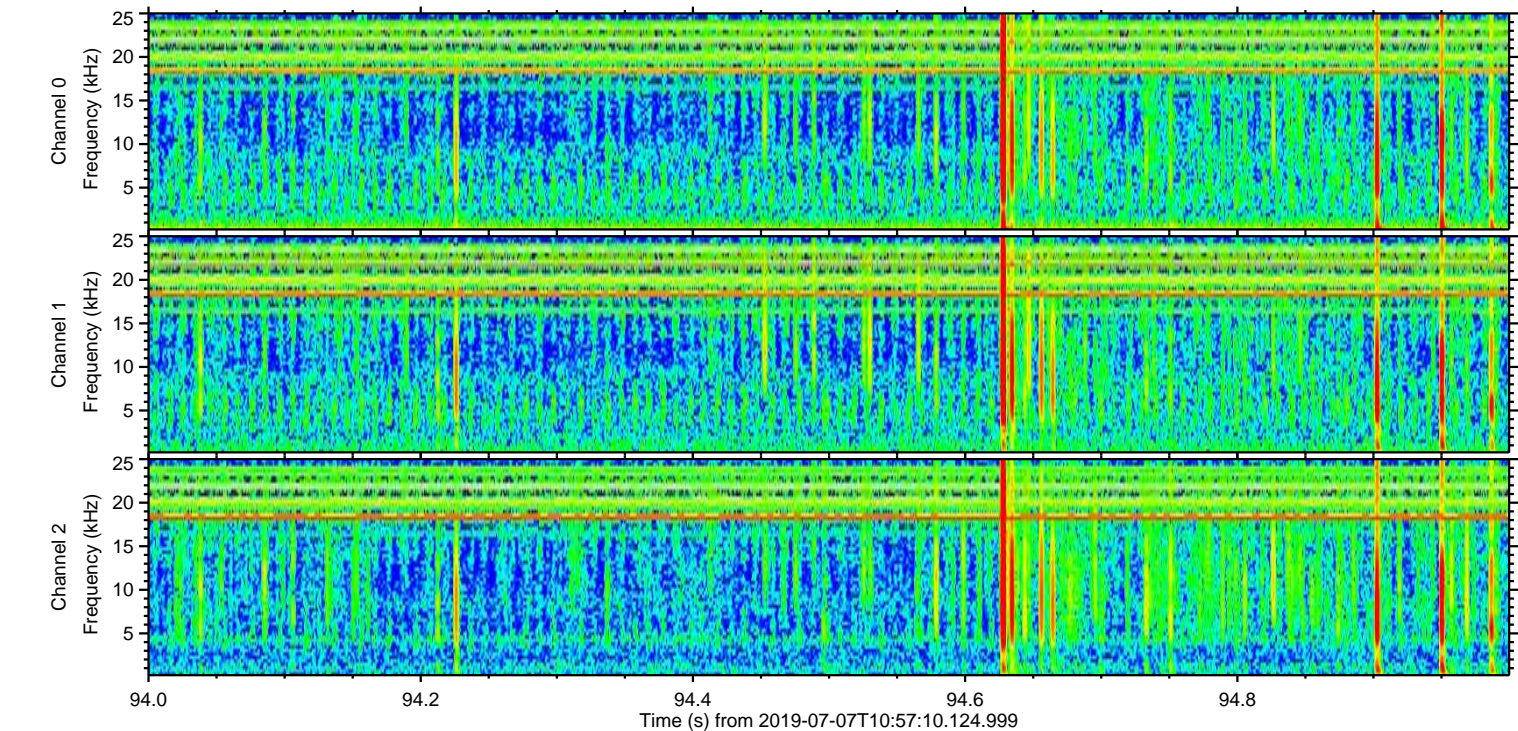
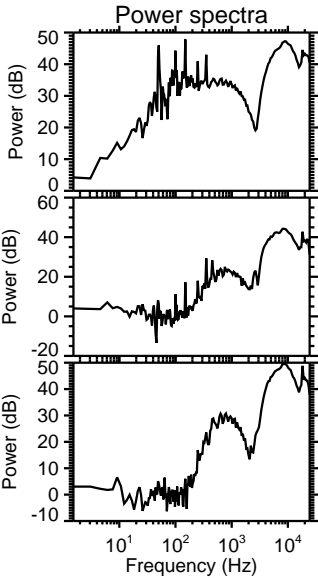
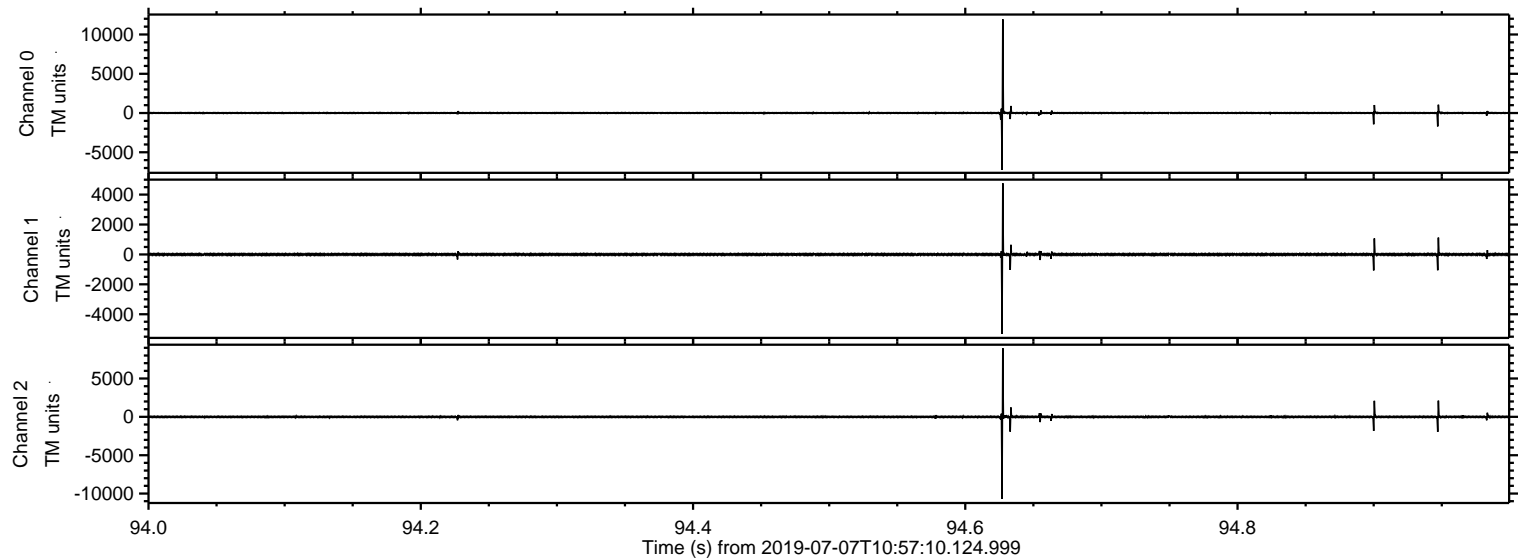


ELMAVAN 3D WAVEFORMS (Measured data sampled at 50 kHz) 51000 packets of 144 samples from 2019-07-07T10:57:10.124.999. Part 120/147

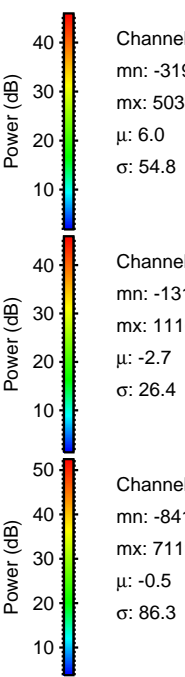
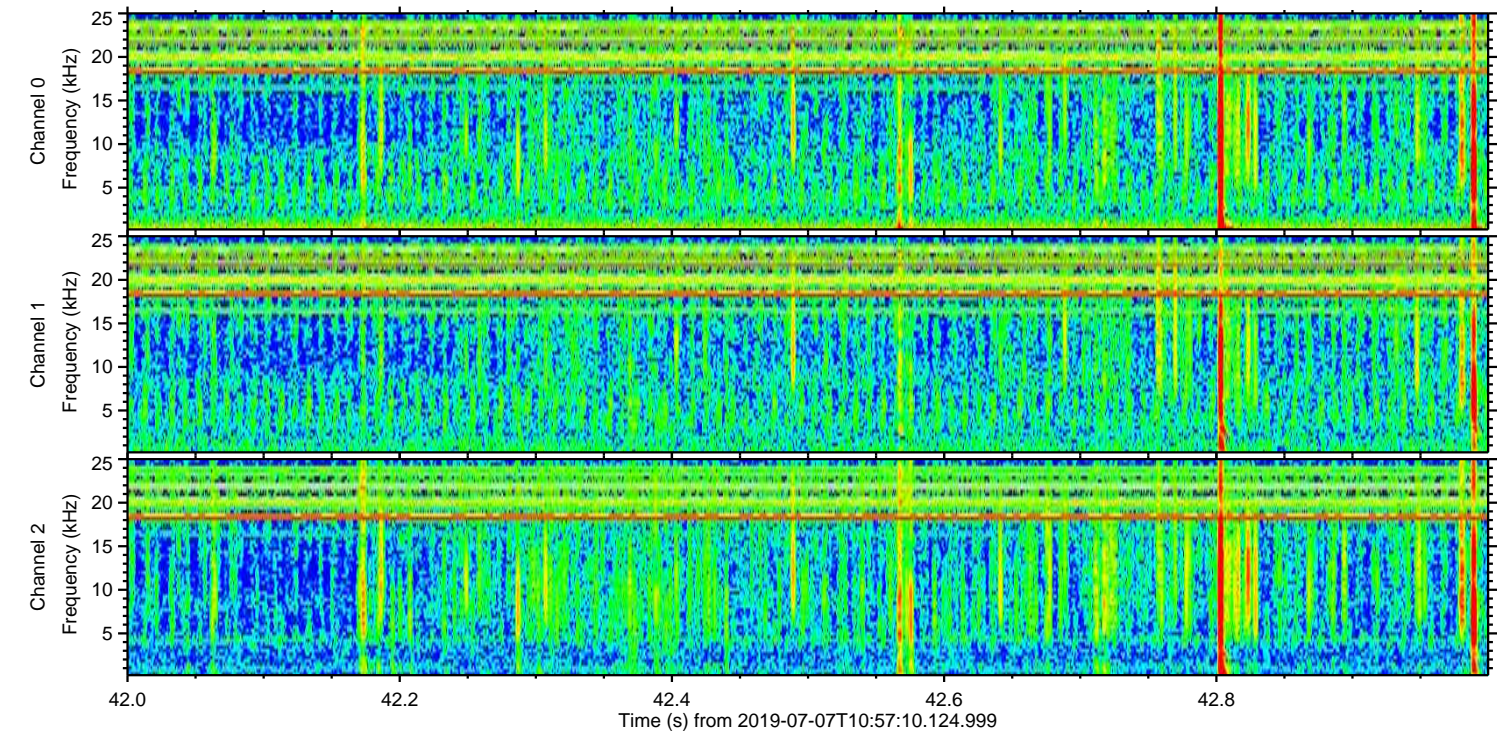
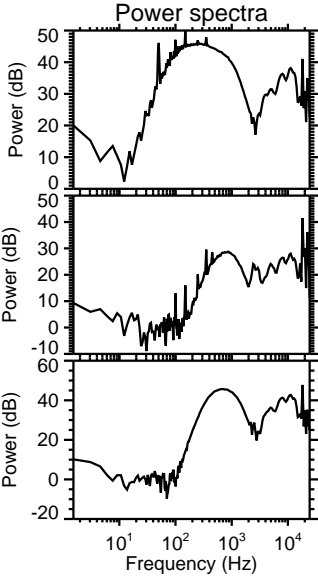
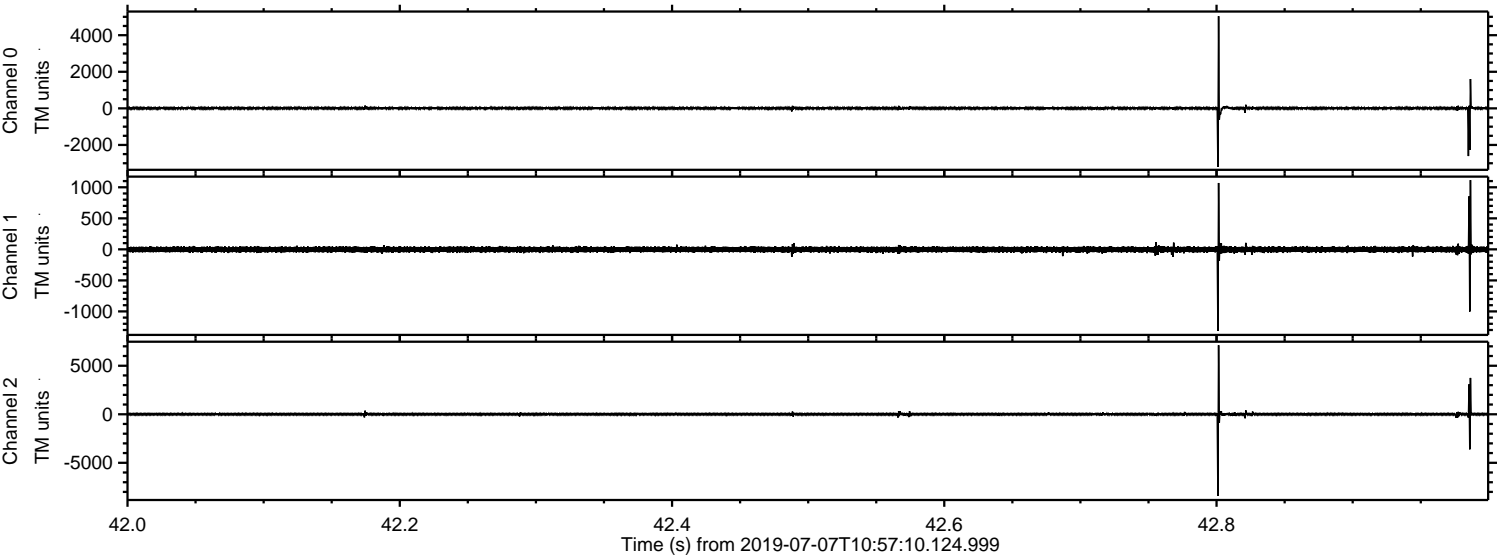
Processed Sun Jul 7 13:05:20 2019 by ELM ver.2012-10-06 from 001__elm20190707_105709__dat00.bin



Processed Sun Jul 7 13:05:21 2019 by ELM ver.2012-10-06 from 001__elm20190707_105709__dat00.bin



Processed Sun Jul 7 13:05:22 2019 by ELM ver.2012-10-06 from 001__elm20190707_105709__dat00.bin

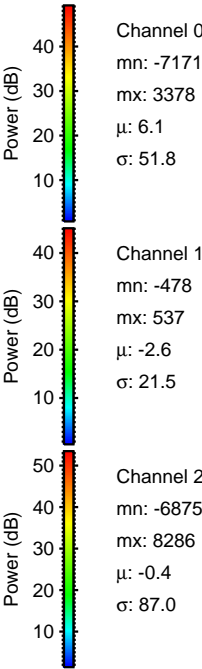
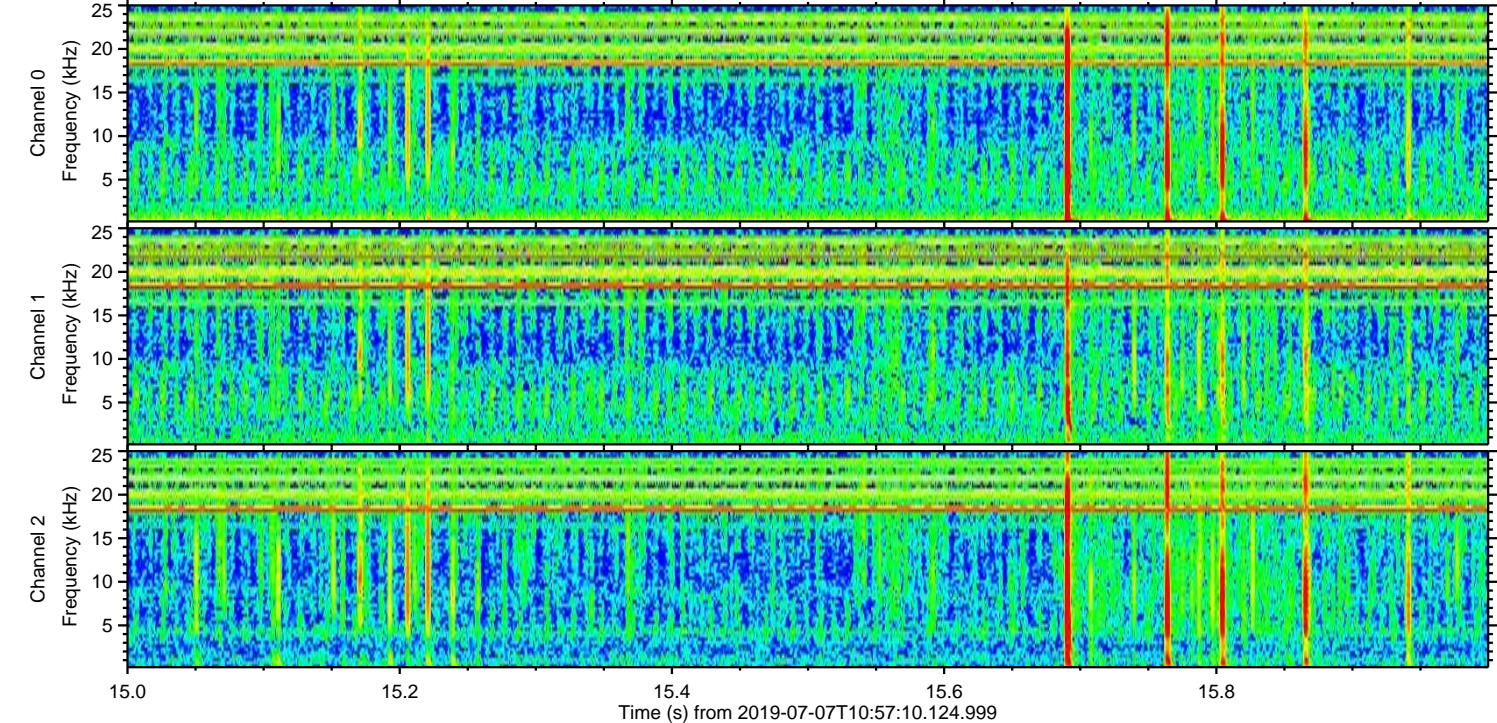
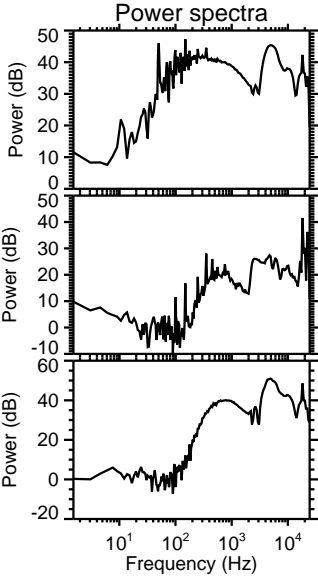
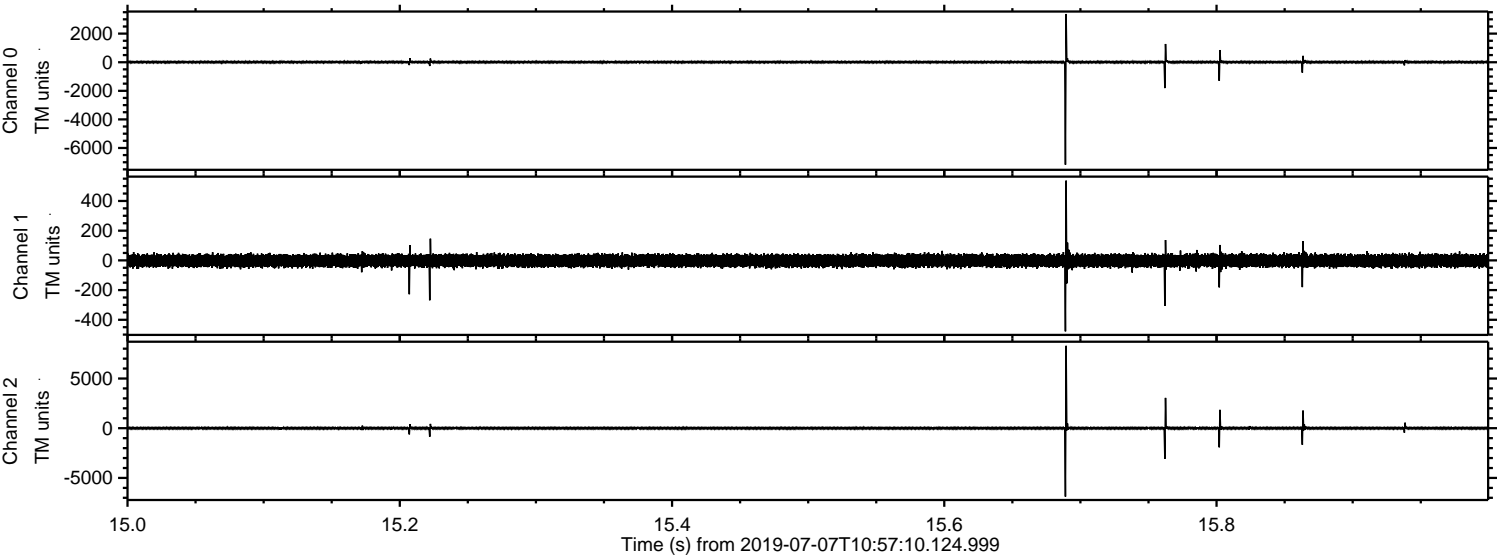


Channel 0
mn: -3198
mx: 5039
 μ : 6.0
 σ : 54.8

Channel 1
mn: -1313
mx: 1116
 μ : -2.7
 σ : 26.4

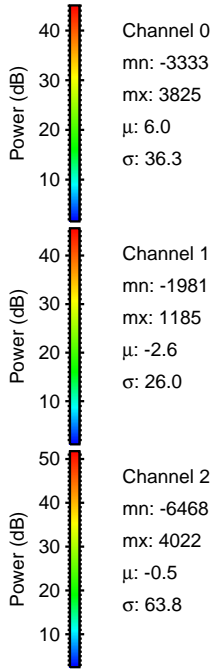
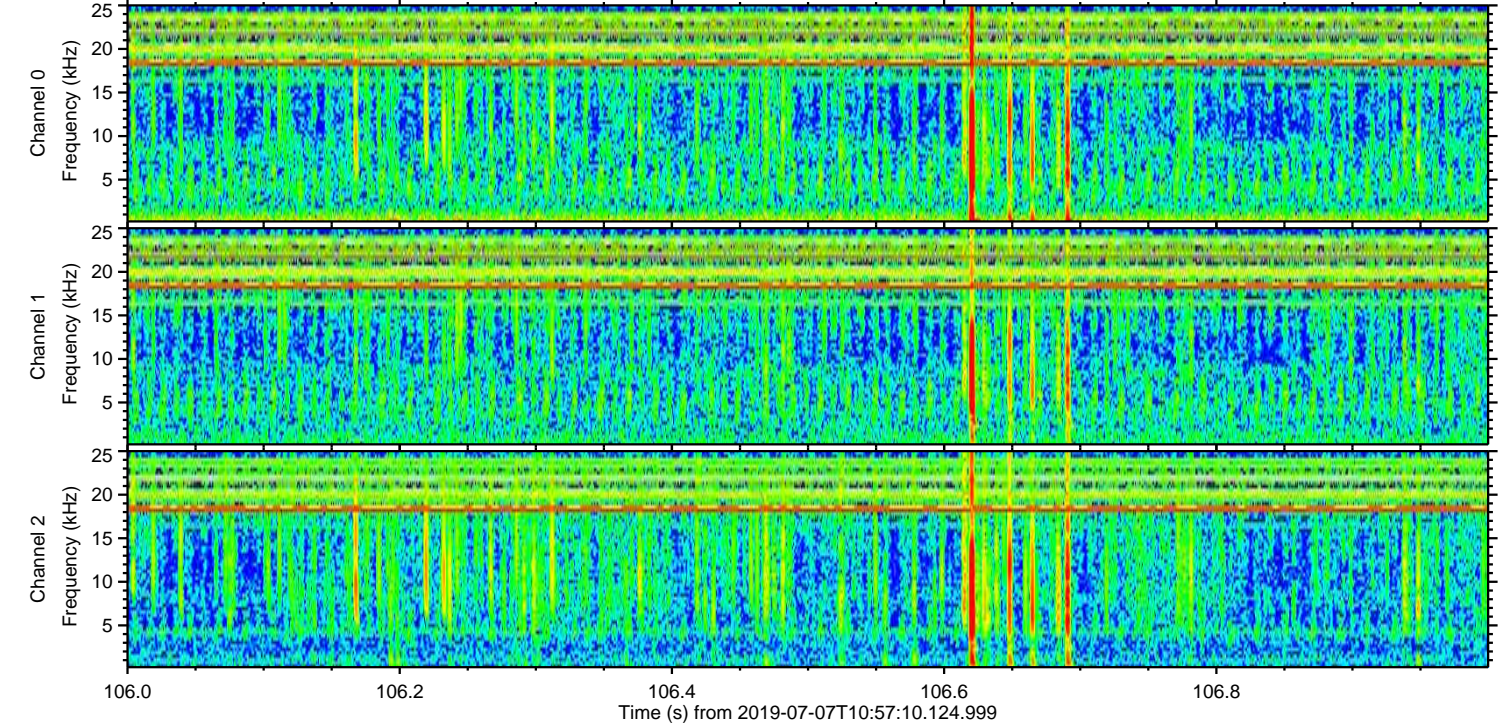
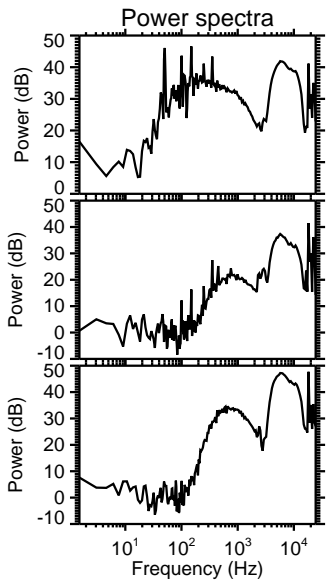
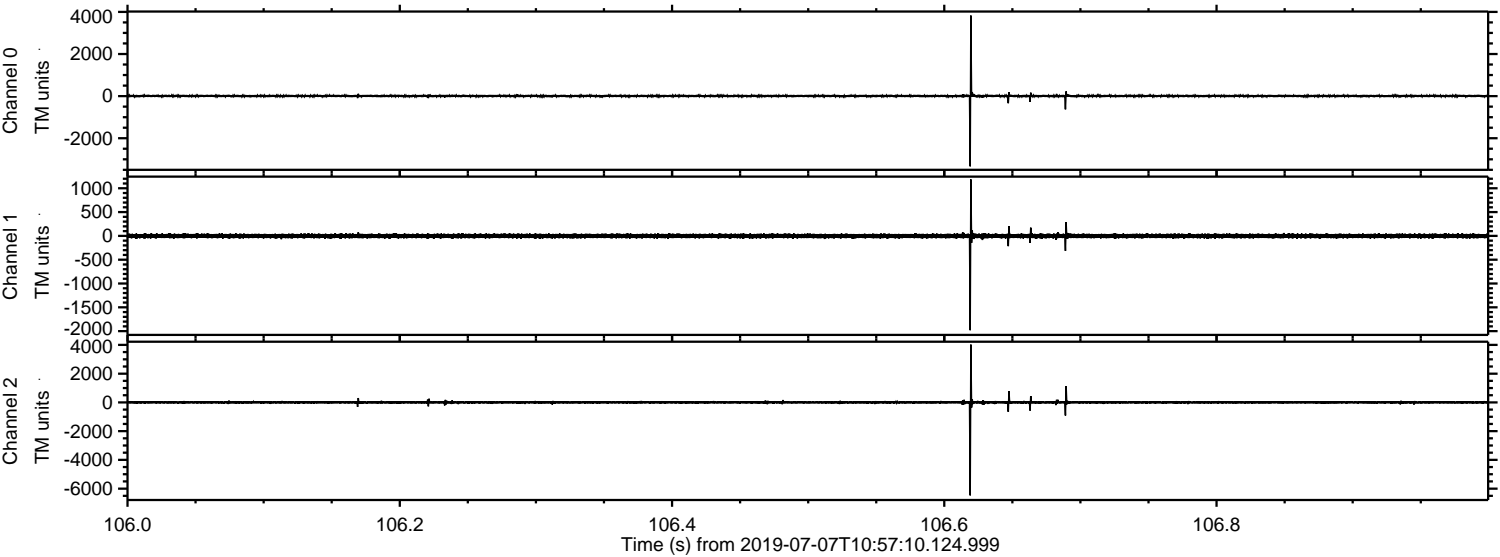
Channel 2
mn: -8413
mx: 7119
 μ : -0.5
 σ : 86.3

Processed Sun Jul 7 13:05:23 2019 by ELM ver.2012-10-06 from 001__elm20190707_105709__dat00.bin

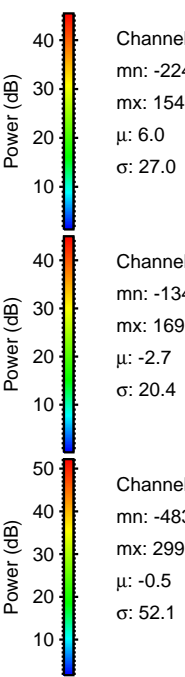
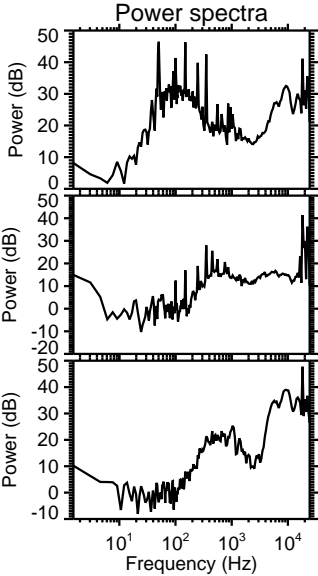
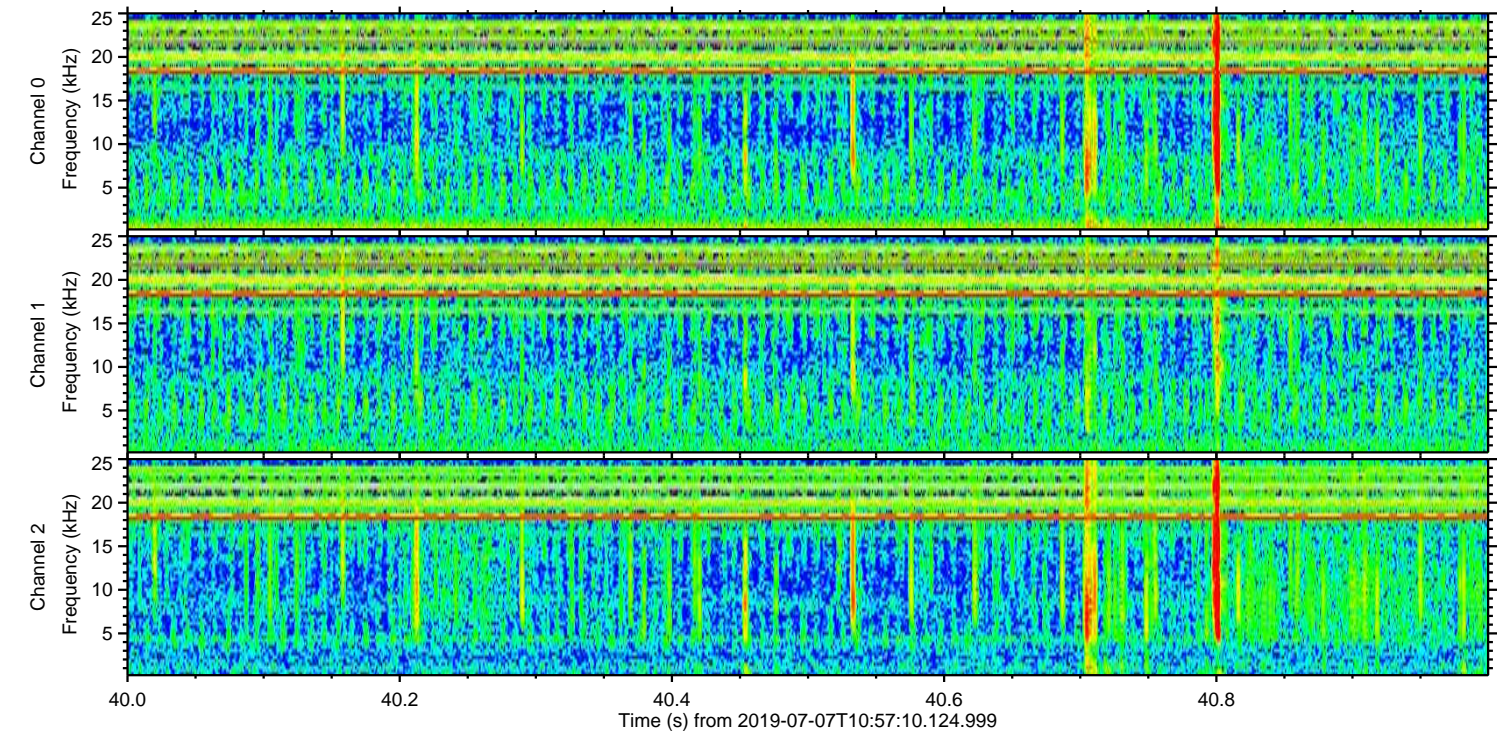
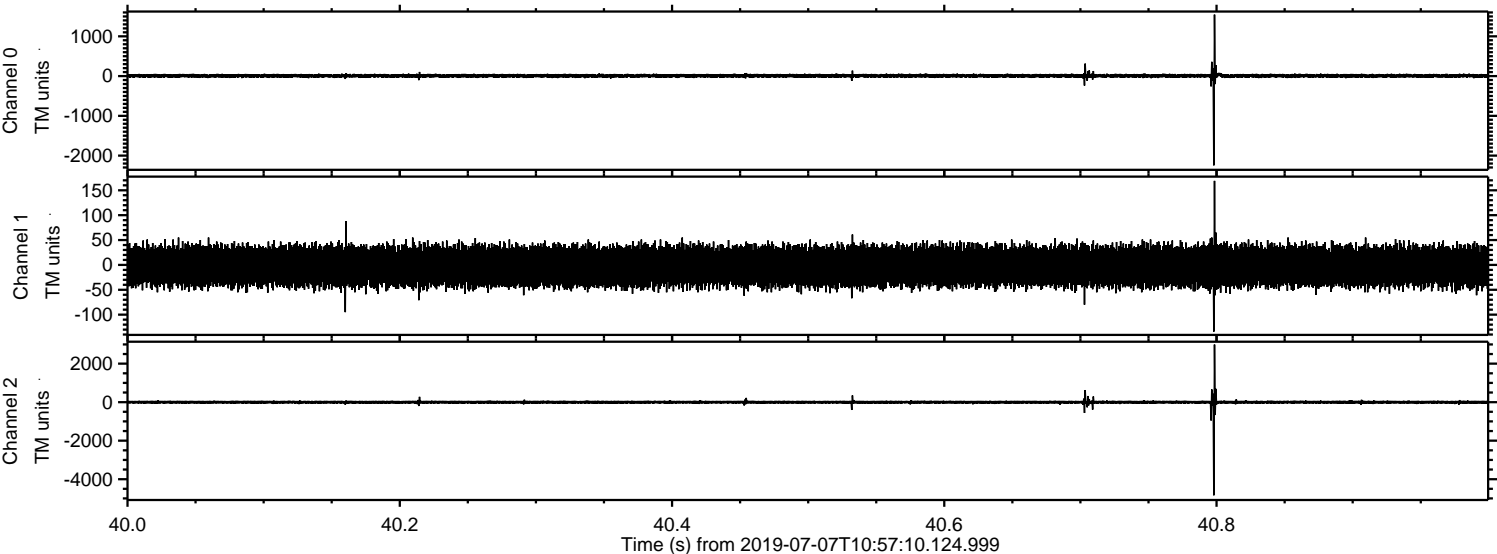


ELMAVAN 3D WAVEFORMS (Measured data sampled at 50 kHz) 51000 packets of 144 samples from 2019-07-07T10:57:10.124.999. Part 107/147

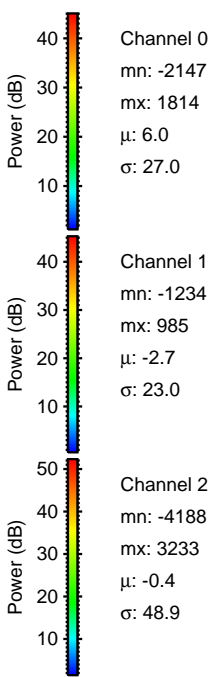
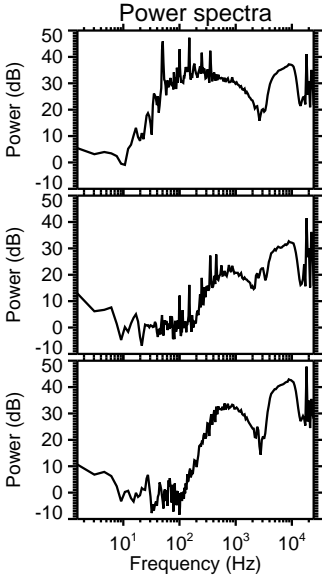
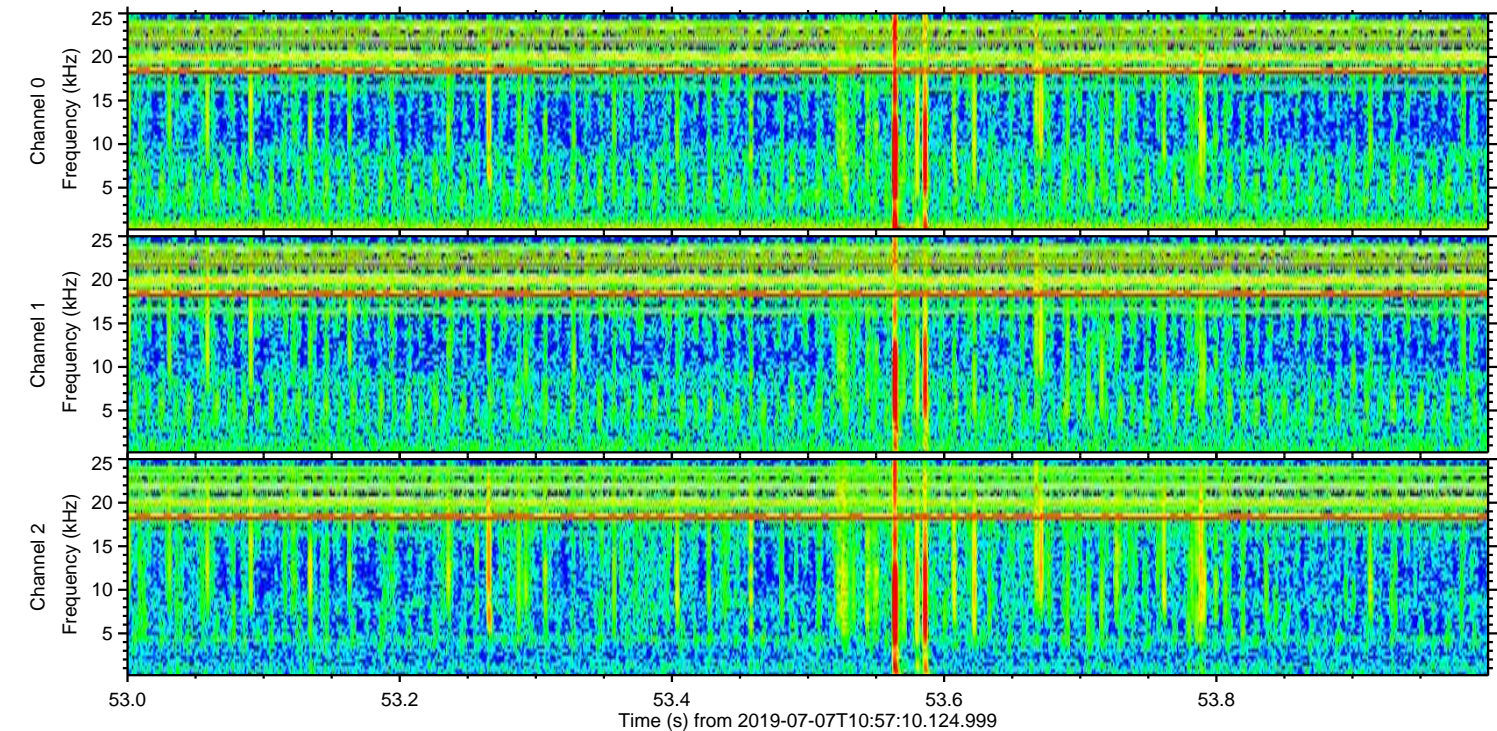
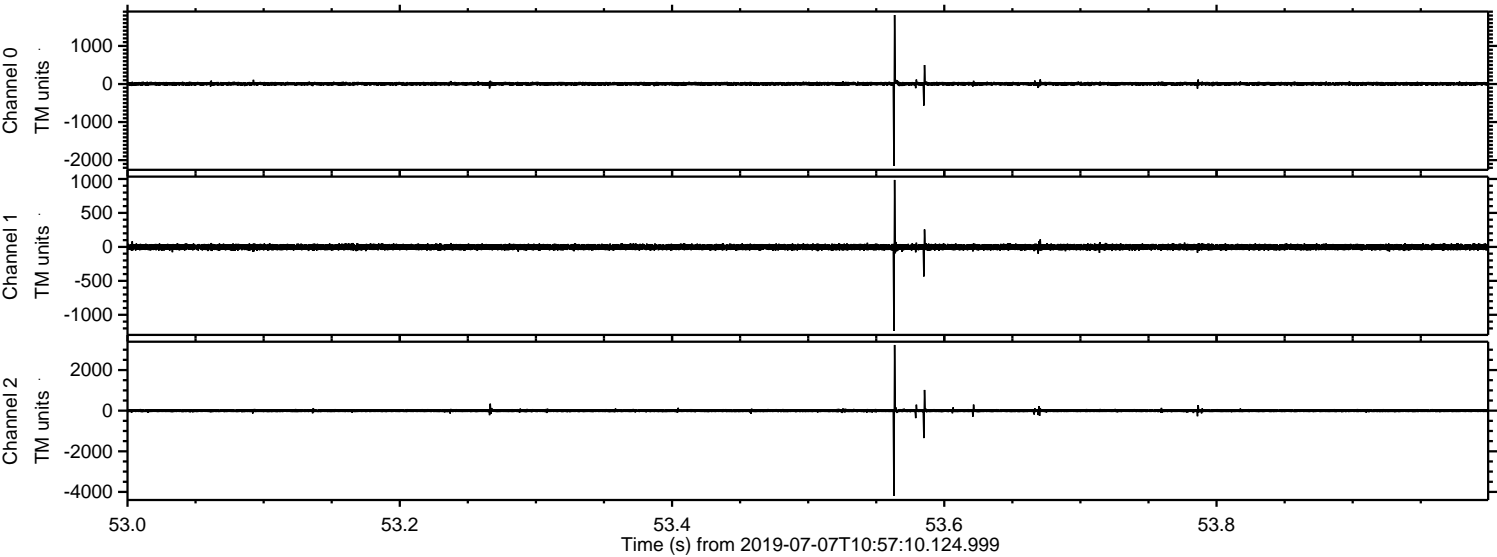
Processed Sun Jul 7 13:05:24 2019 by ELM ver.2012-10-06 from 001__elm20190707_105709__dat00.bin



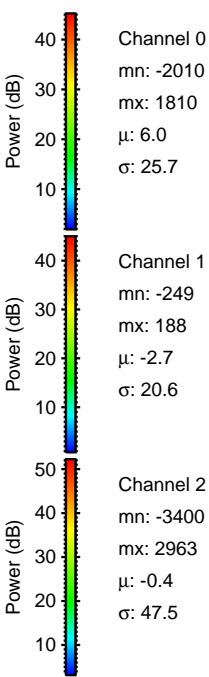
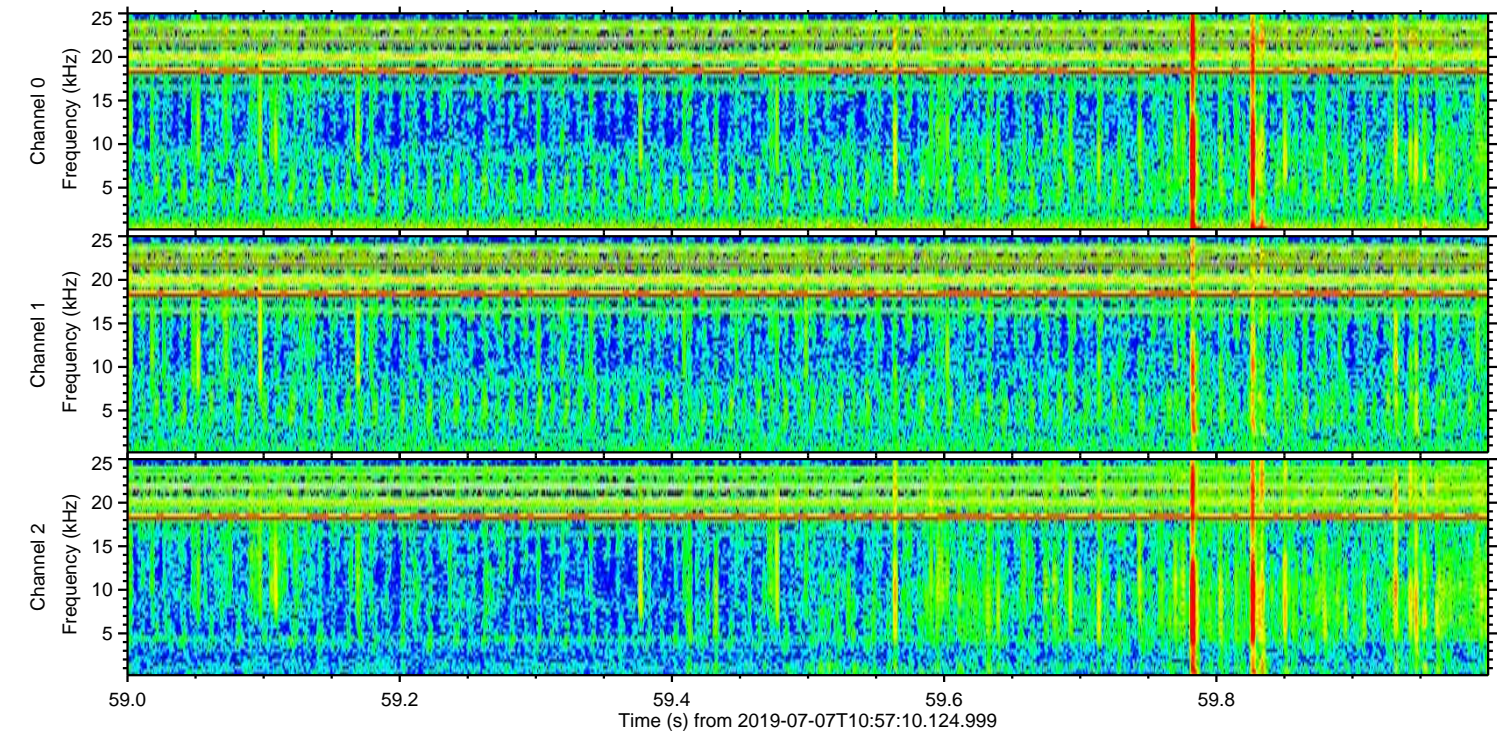
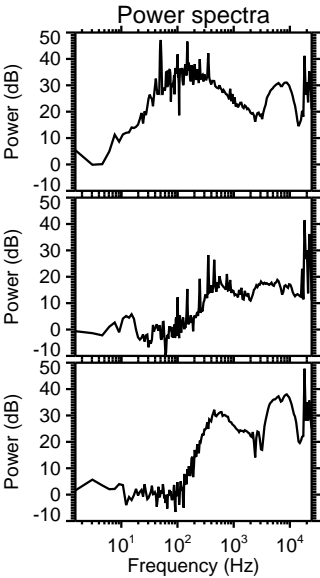
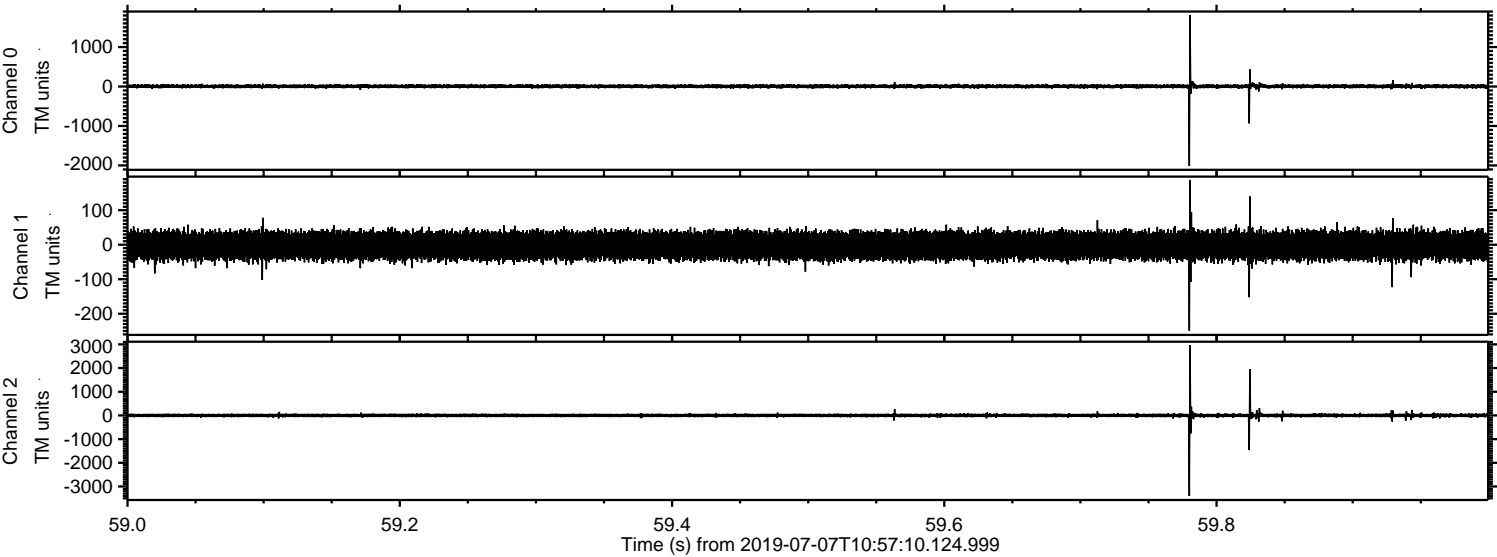
Processed Sun Jul 7 13:05:24 2019 by ELM ver.2012-10-06 from 001__elm20190707_105709__dat00.bin



Processed Sun Jul 7 13:05:25 2019 by ELM ver.2012-10-06 from 001__elm20190707_105709__dat00.bin



Processed Sun Jul 7 13:05:26 2019 by ELM ver.2012-10-06 from 001__elm20190707_105709__dat00.bin

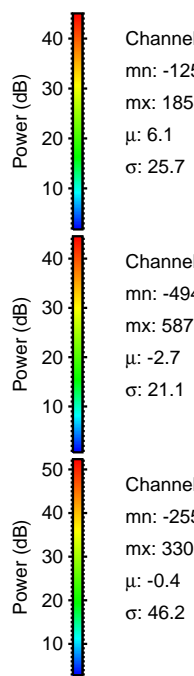
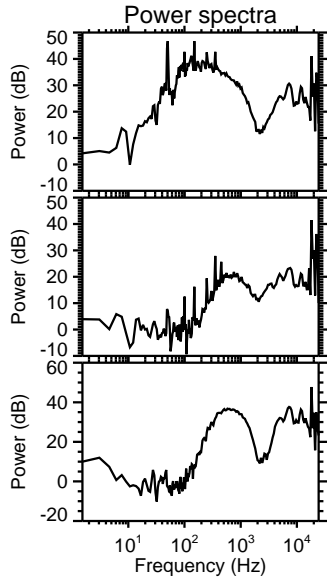
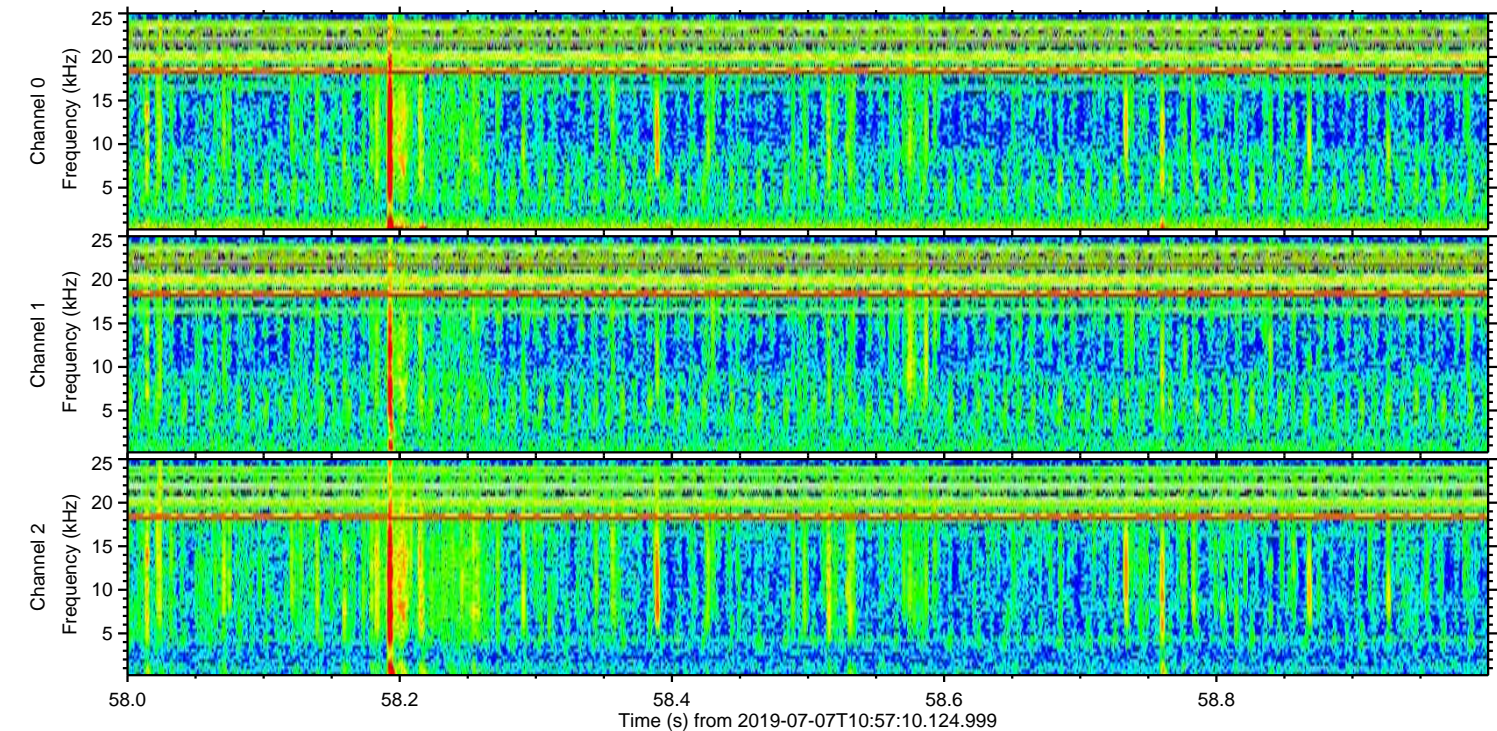
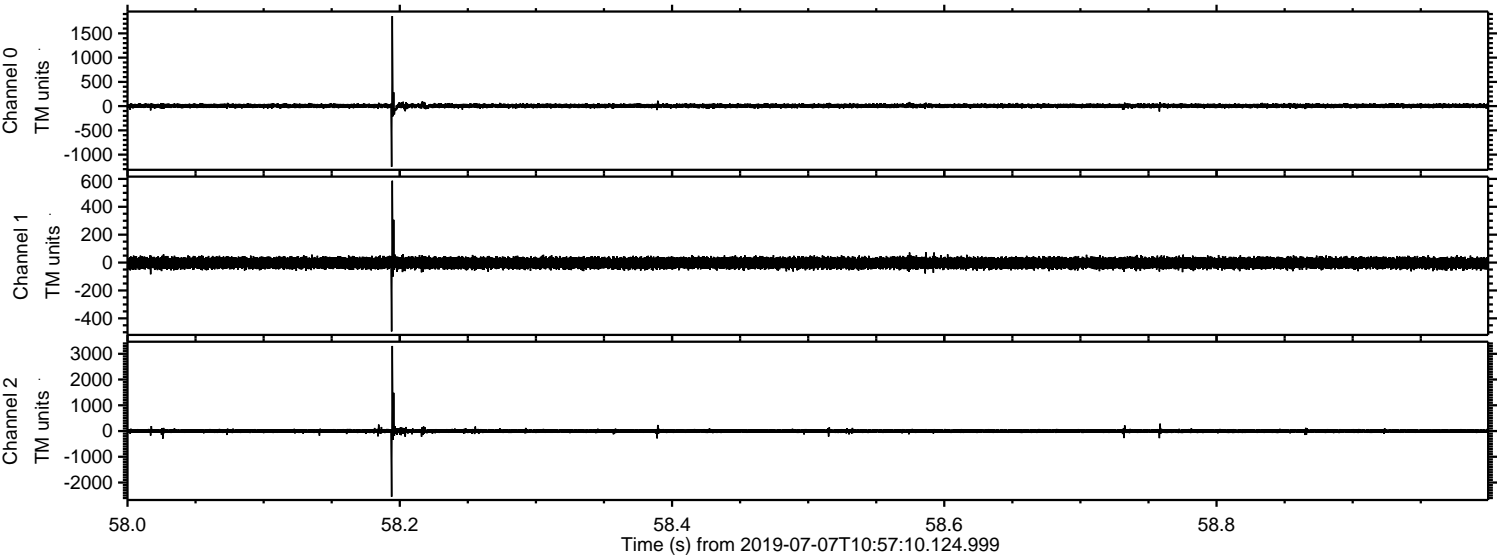


Channel 0
mn: -2010
mx: 1810
 μ : 6.0
 σ : 25.7

Channel 1
mn: -249
mx: 188
 μ : -2.7
 σ : 20.6

Channel 2
mn: -3400
mx: 2963
 μ : -0.4
 σ : 47.5

Processed Sun Jul 7 13:05:27 2019 by ELM ver.2012-10-06 from 001__elm20190707_105709__dat00.bin



Processed Sun Jul 7 13:05:28 2019 by ELM ver.2012-10-06 from 001__elm20190707_105709__dat00.bin

