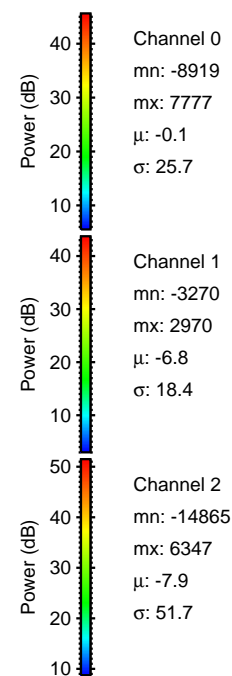
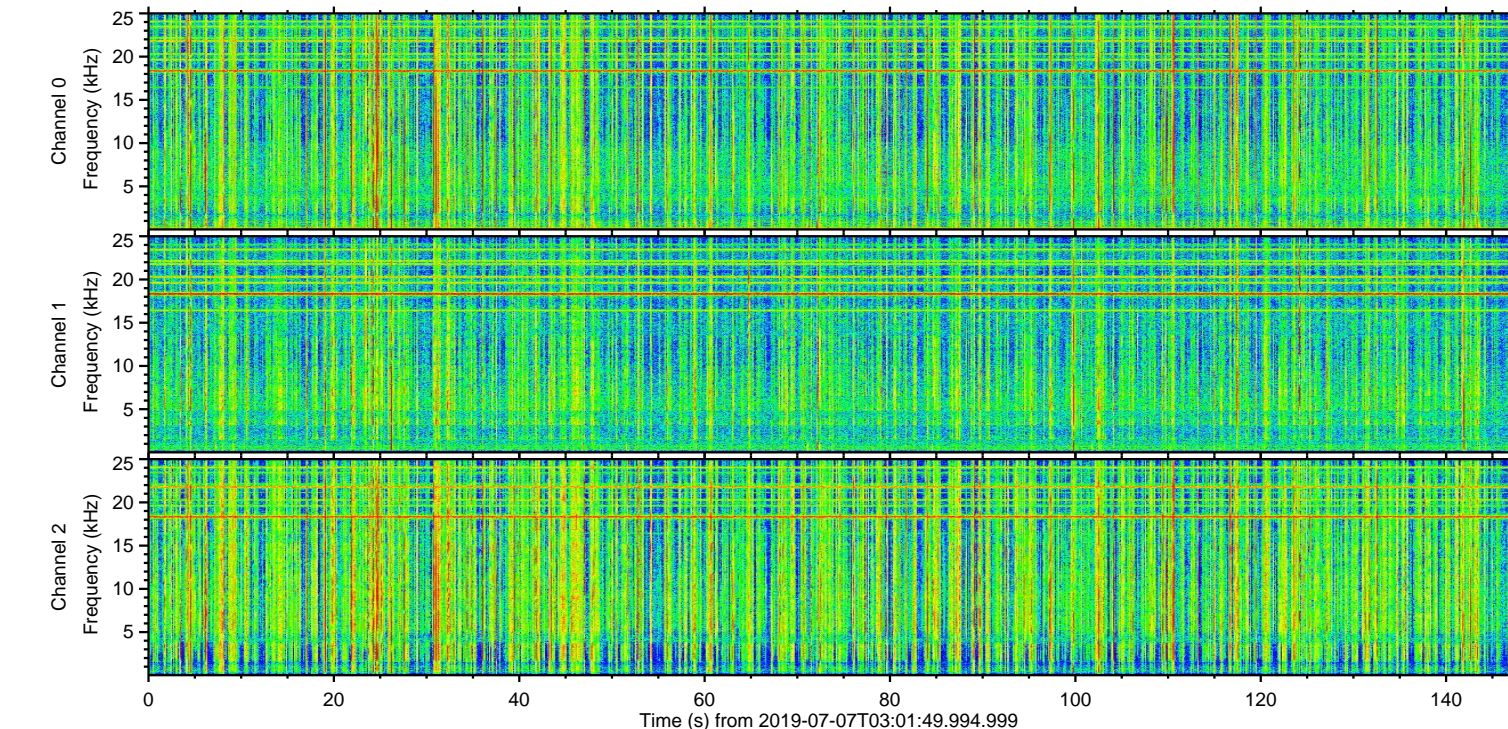
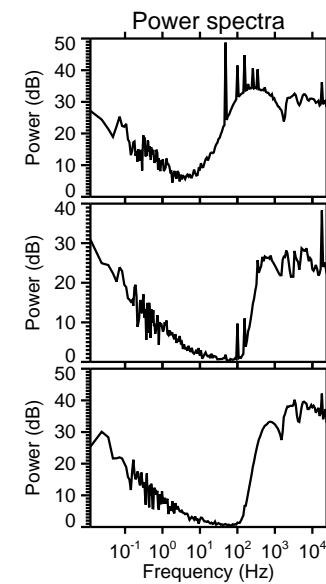
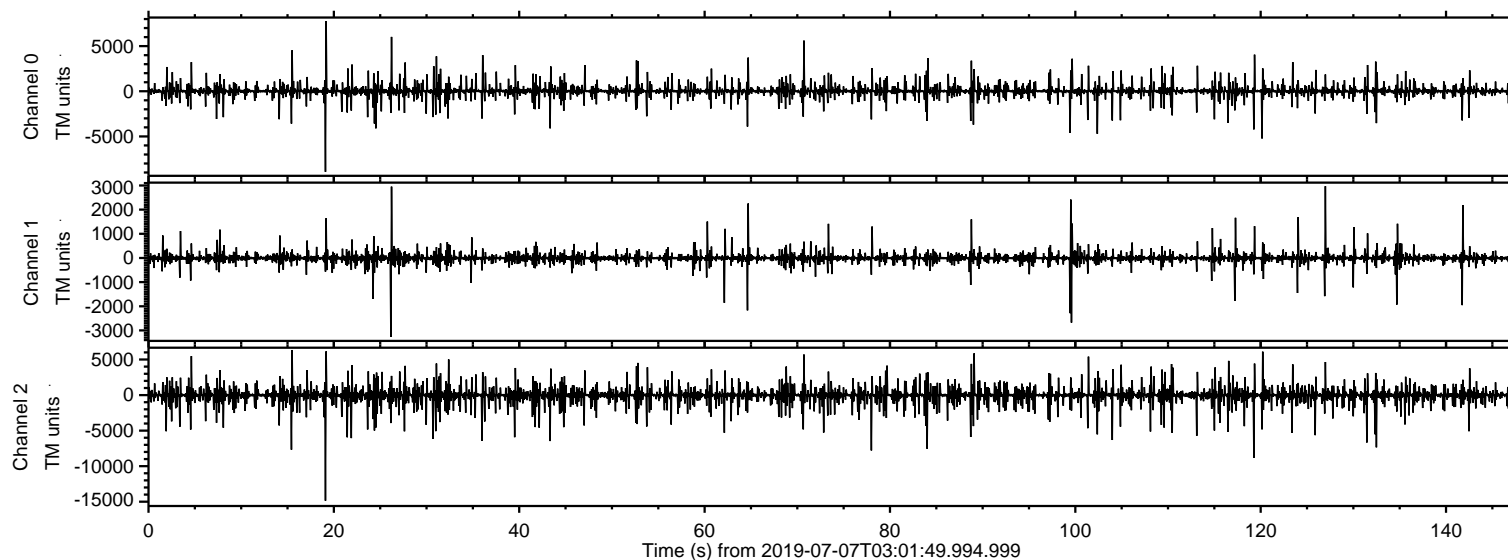
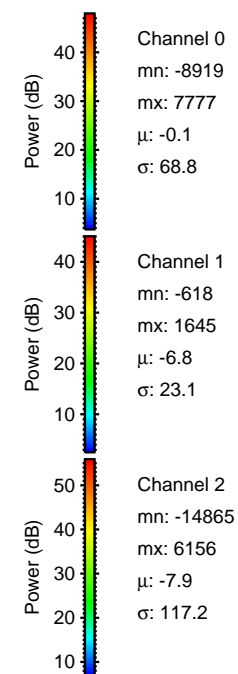
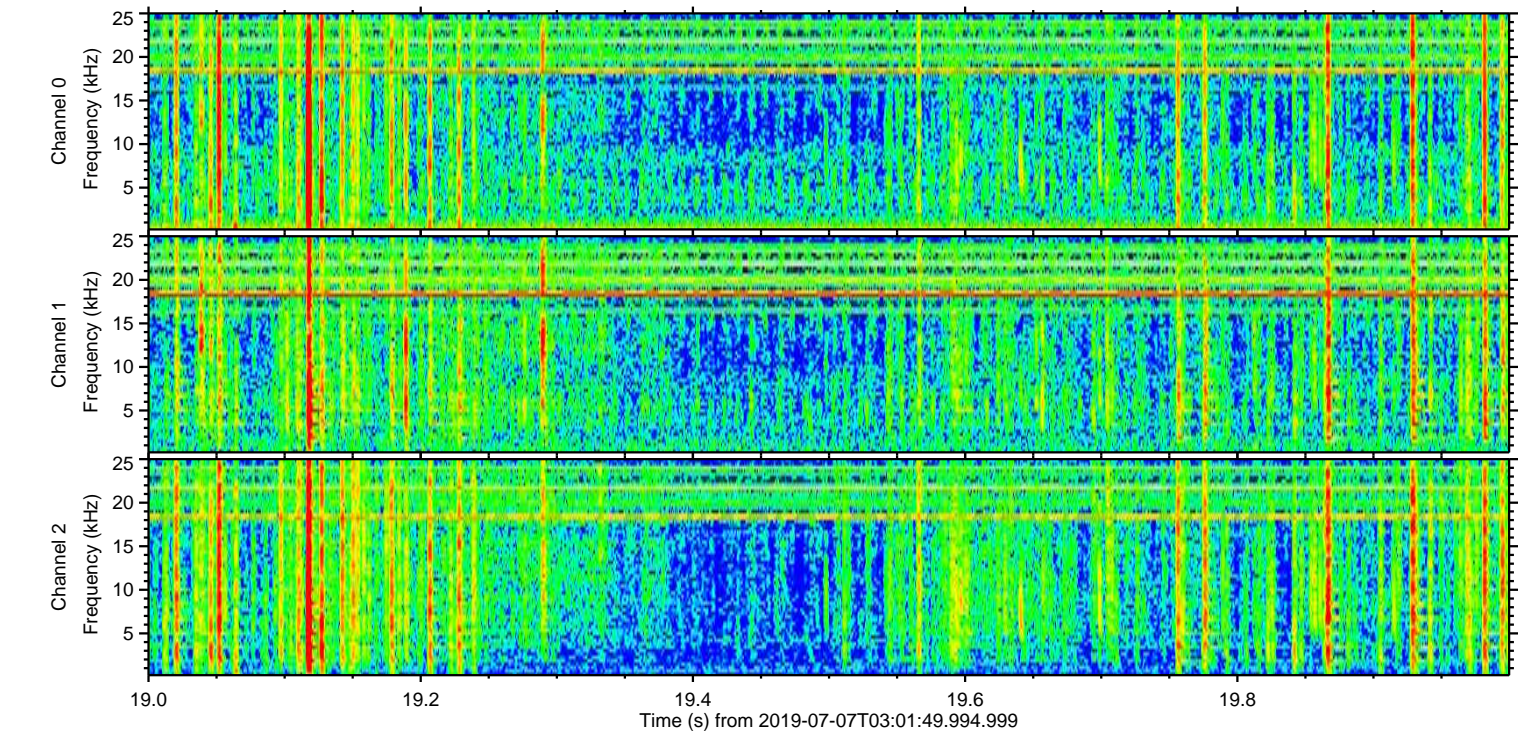
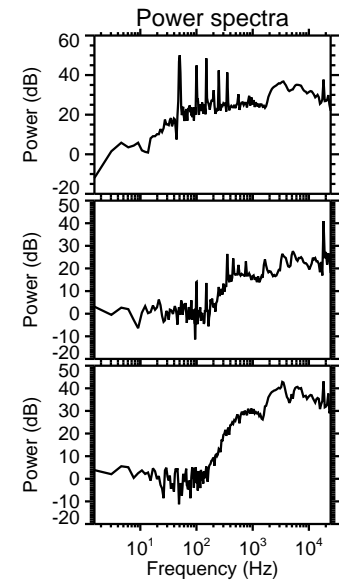
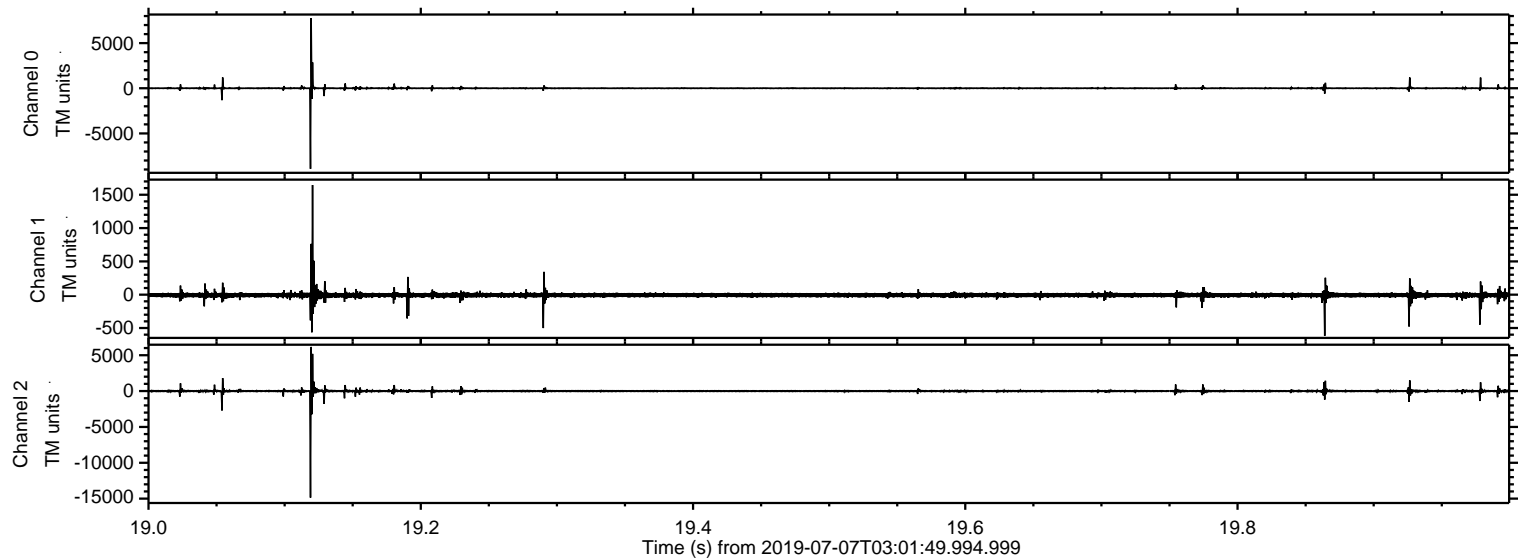


ELMAVAN 3D WAVEFORMS (Measured data sampled at 50 kHz) 51000 packets of 144 samples from 2019-07-07T03:01:49.994.999.

Processed Sun Jul 7 05:09:46 2019 by ELM ver.2012-10-06 from 001__elm20190707_030148__dat00.bin

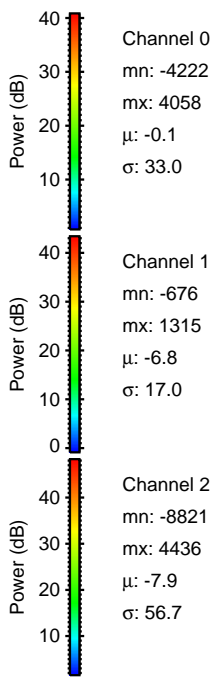
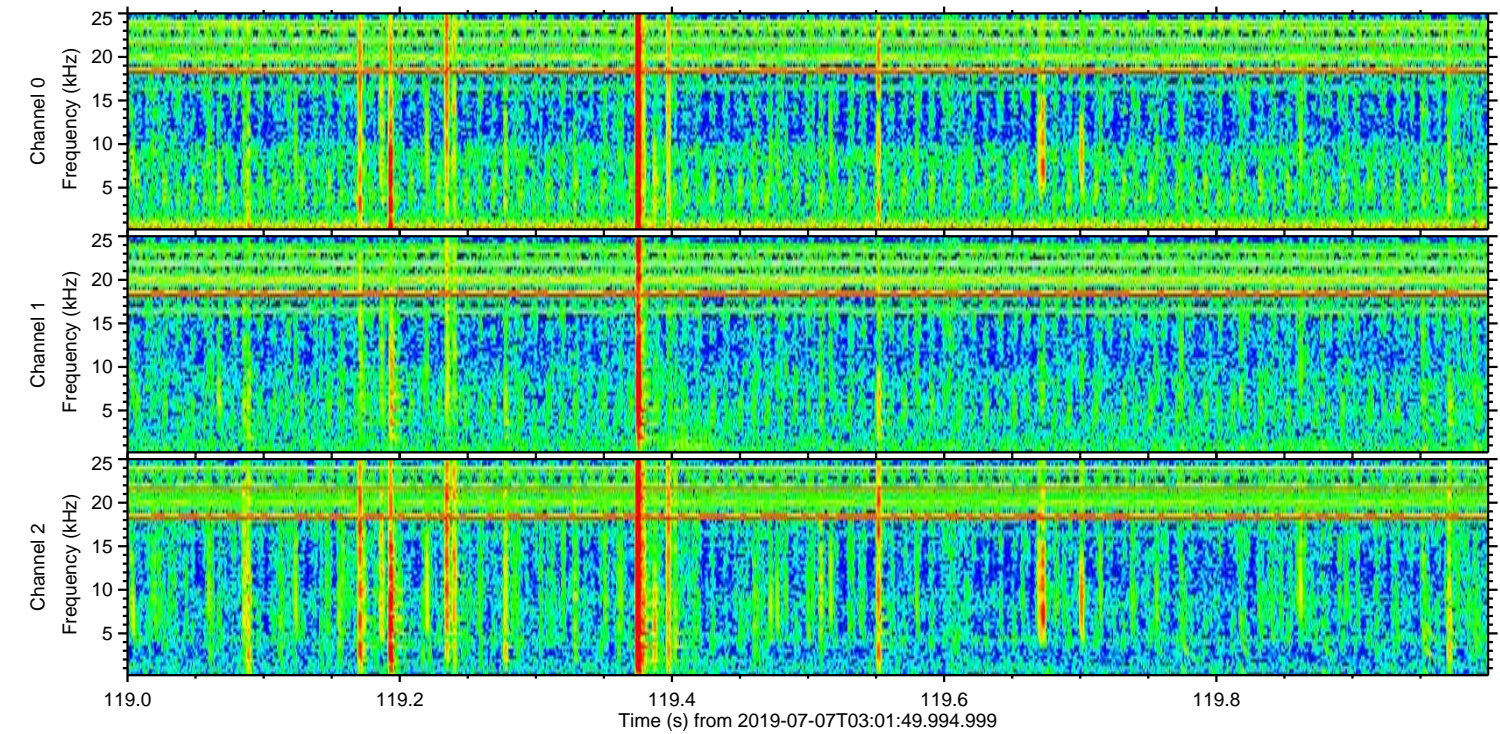
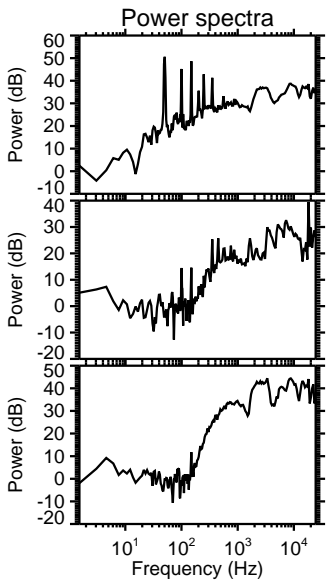
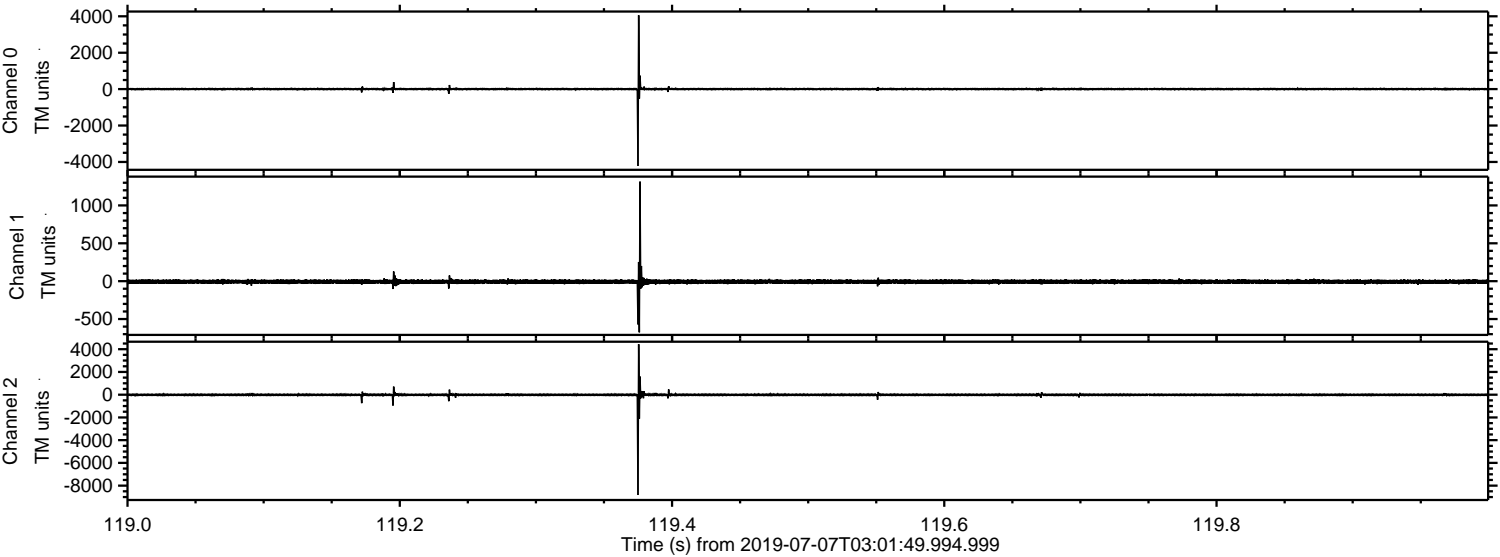


Processed Sun Jul 7 05:09:53 2019 by ELM ver.2012-10-06 from 001__elm20190707_030148__dat00.bin

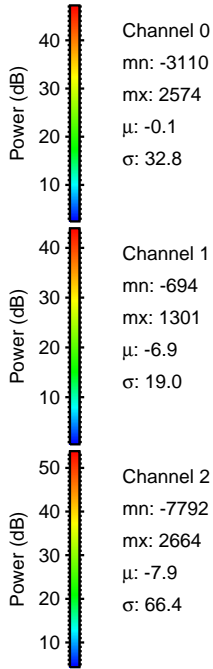
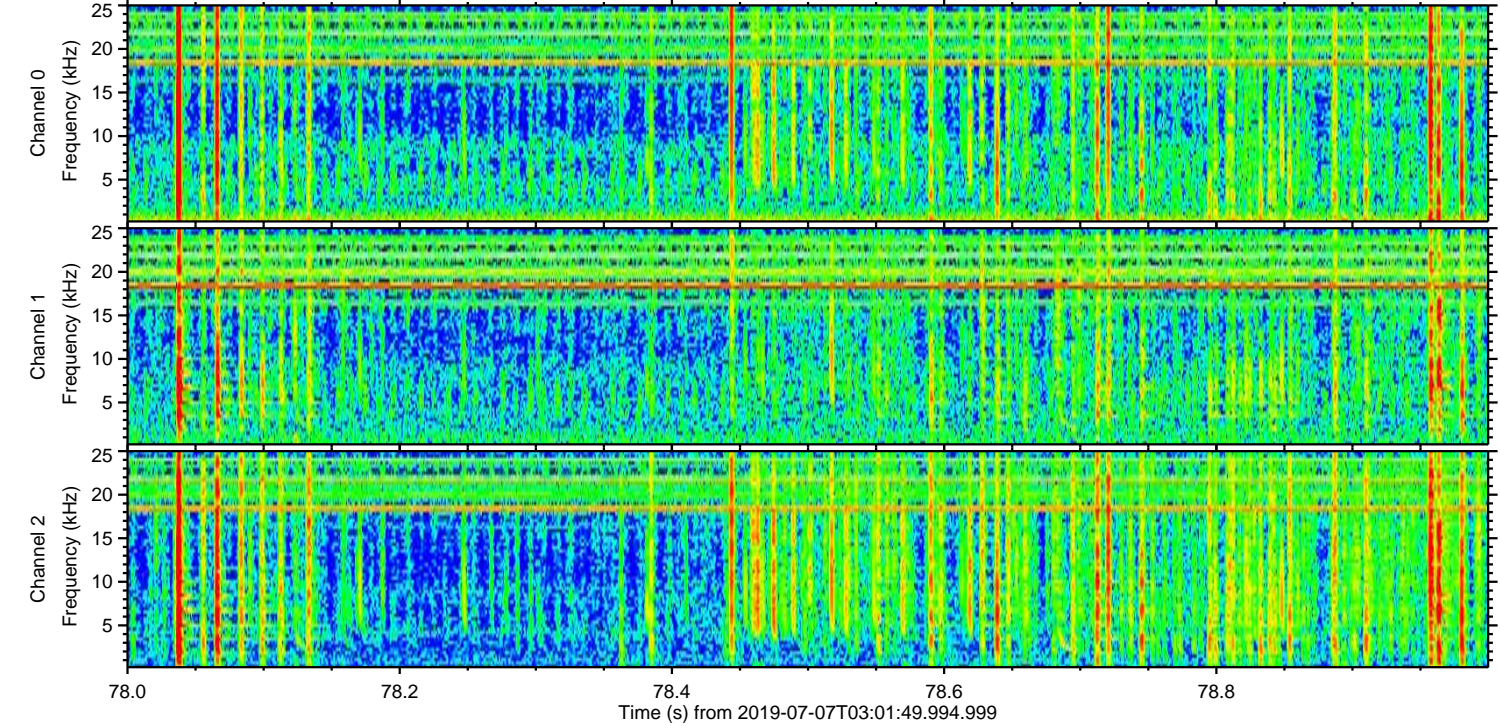
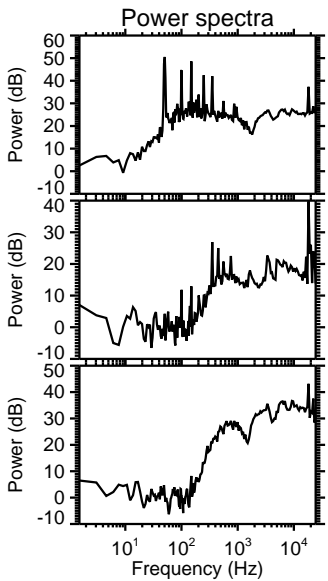
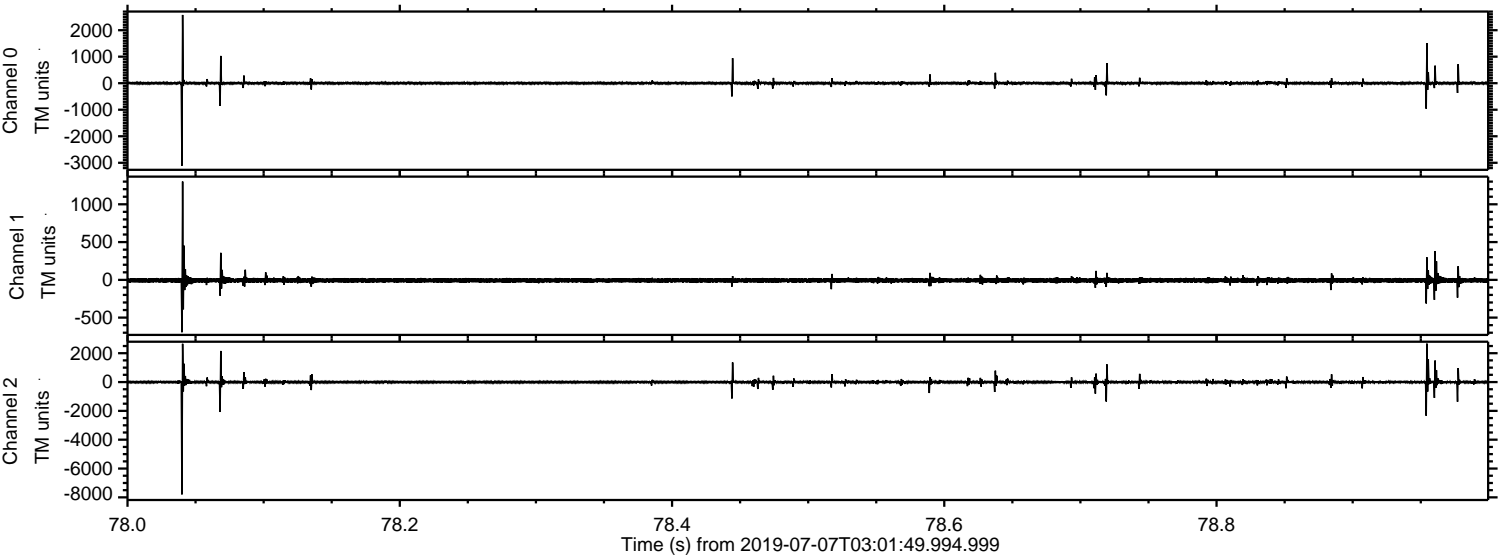


ELMAVAN 3D WAVEFORMS (Measured data sampled at 50 kHz) 51000 packets of 144 samples from 2019-07-07T03:01:49.994.999. Part 120/147

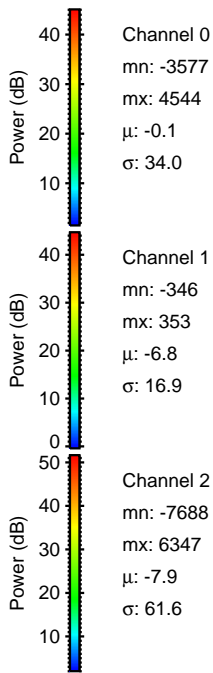
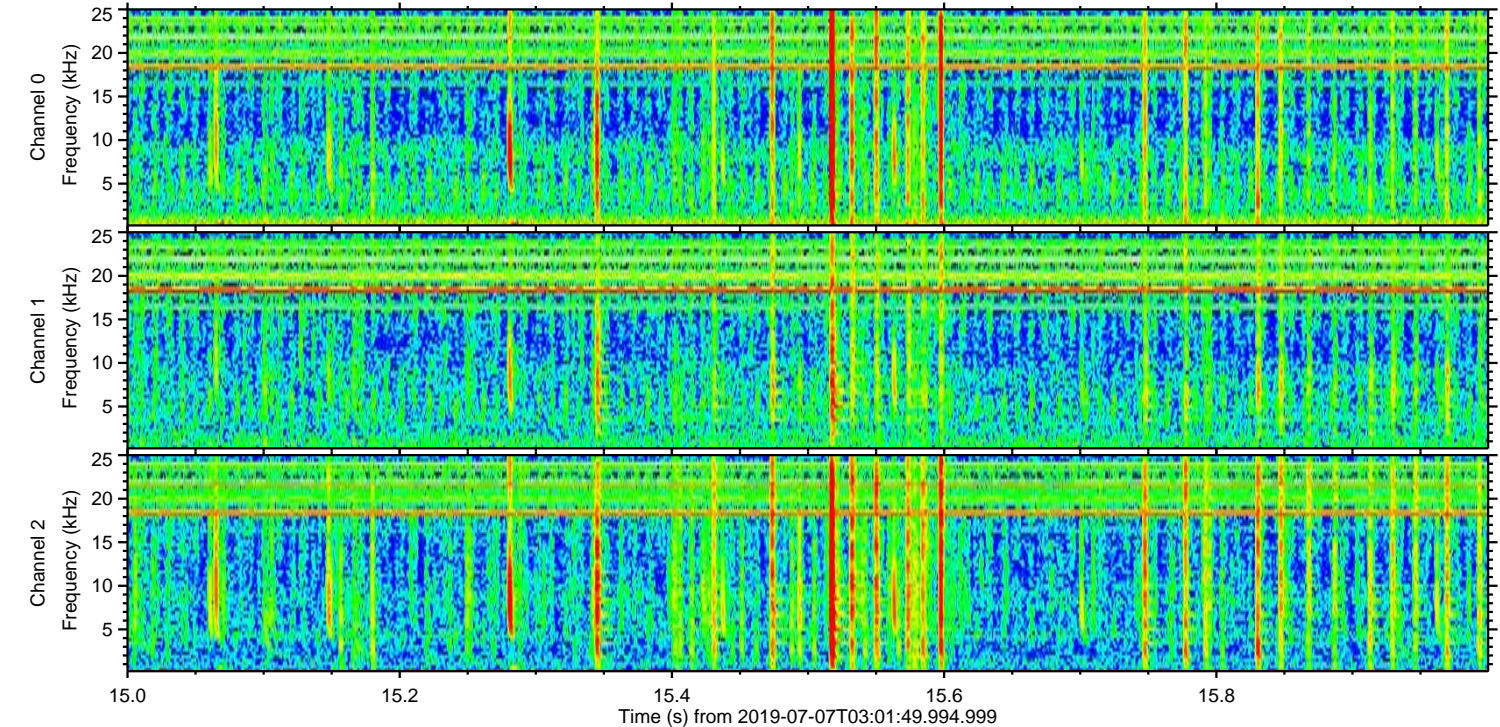
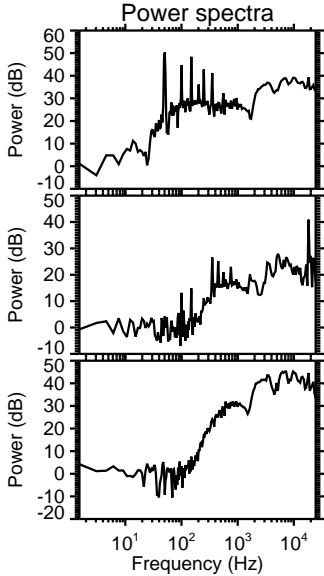
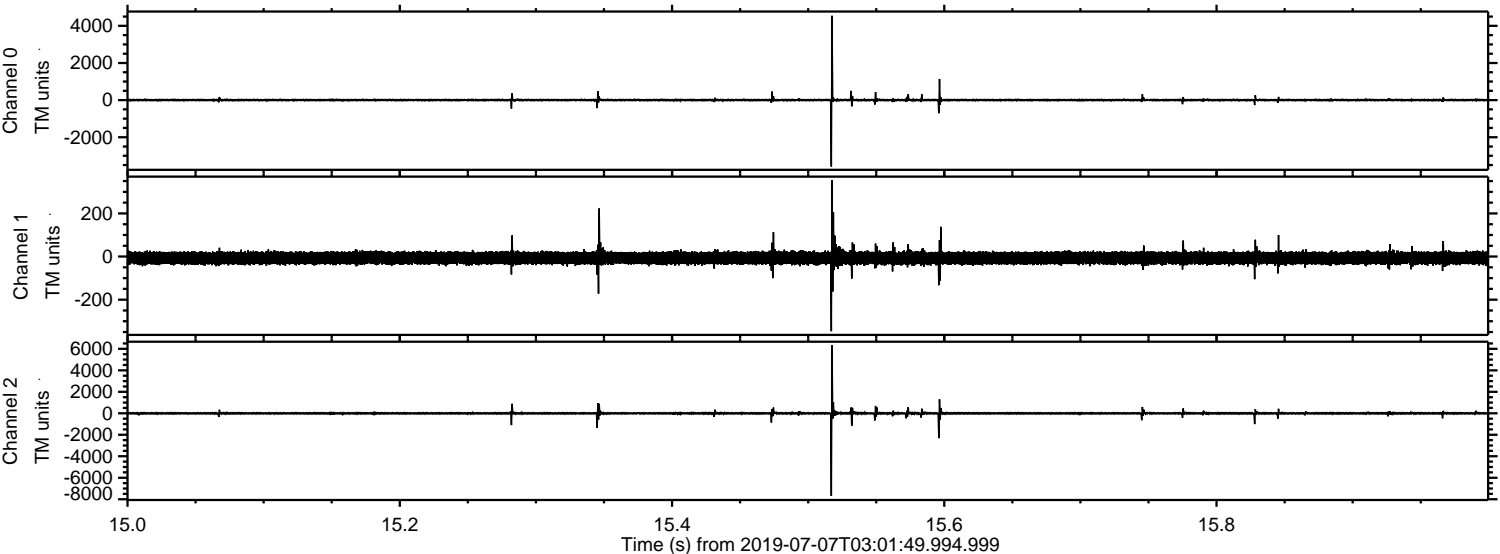
Processed Sun Jul 7 05:09:54 2019 by ELM ver.2012-10-06 from 001__elm20190707_030148__dat00.bin



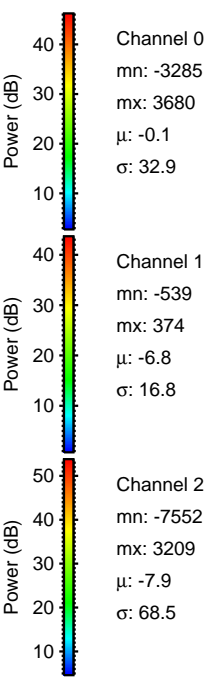
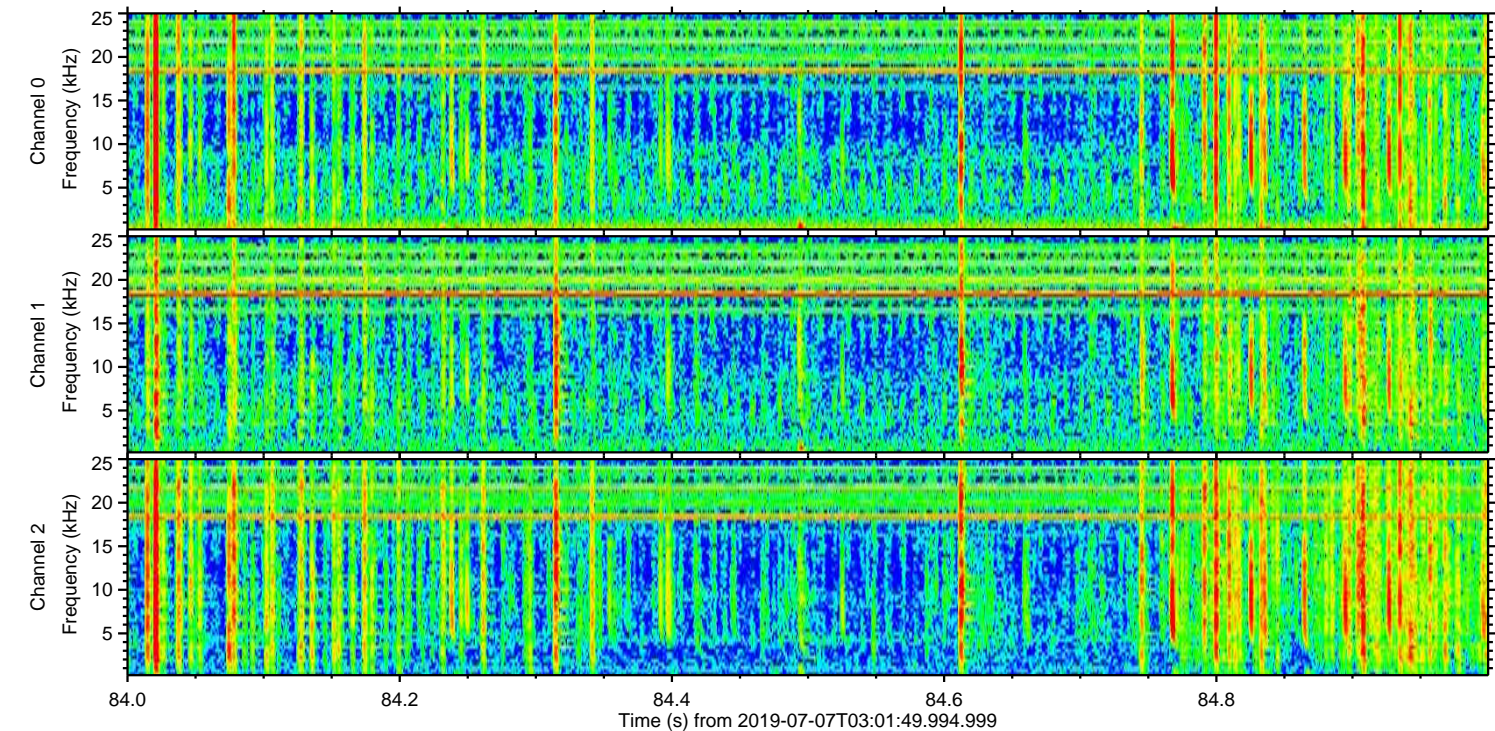
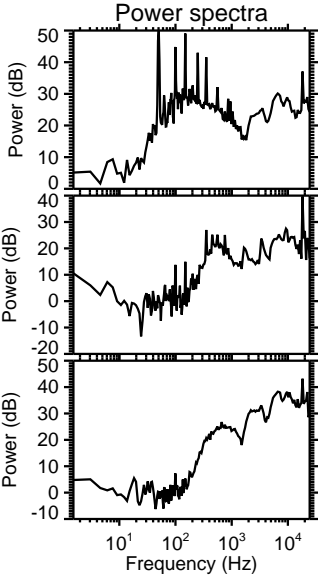
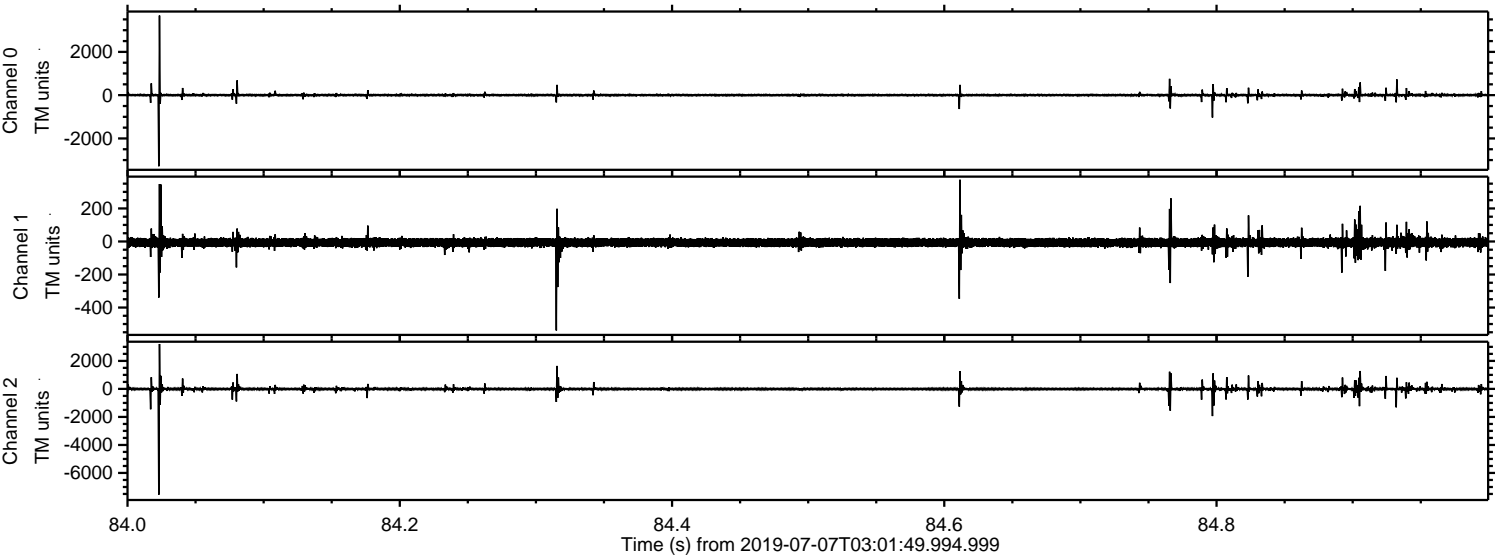
Processed Sun Jul 7 05:09:54 2019 by ELM ver.2012-10-06 from 001__elm20190707_030148__dat00.bin



Processed Sun Jul 7 05:09:55 2019 by ELM ver.2012-10-06 from 001__elm20190707_030148__dat00.bin

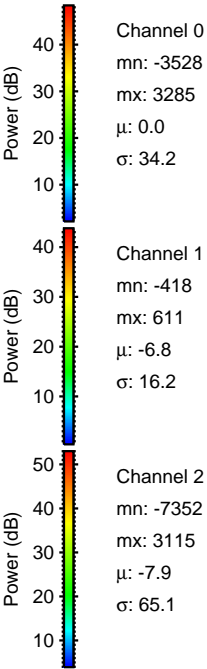
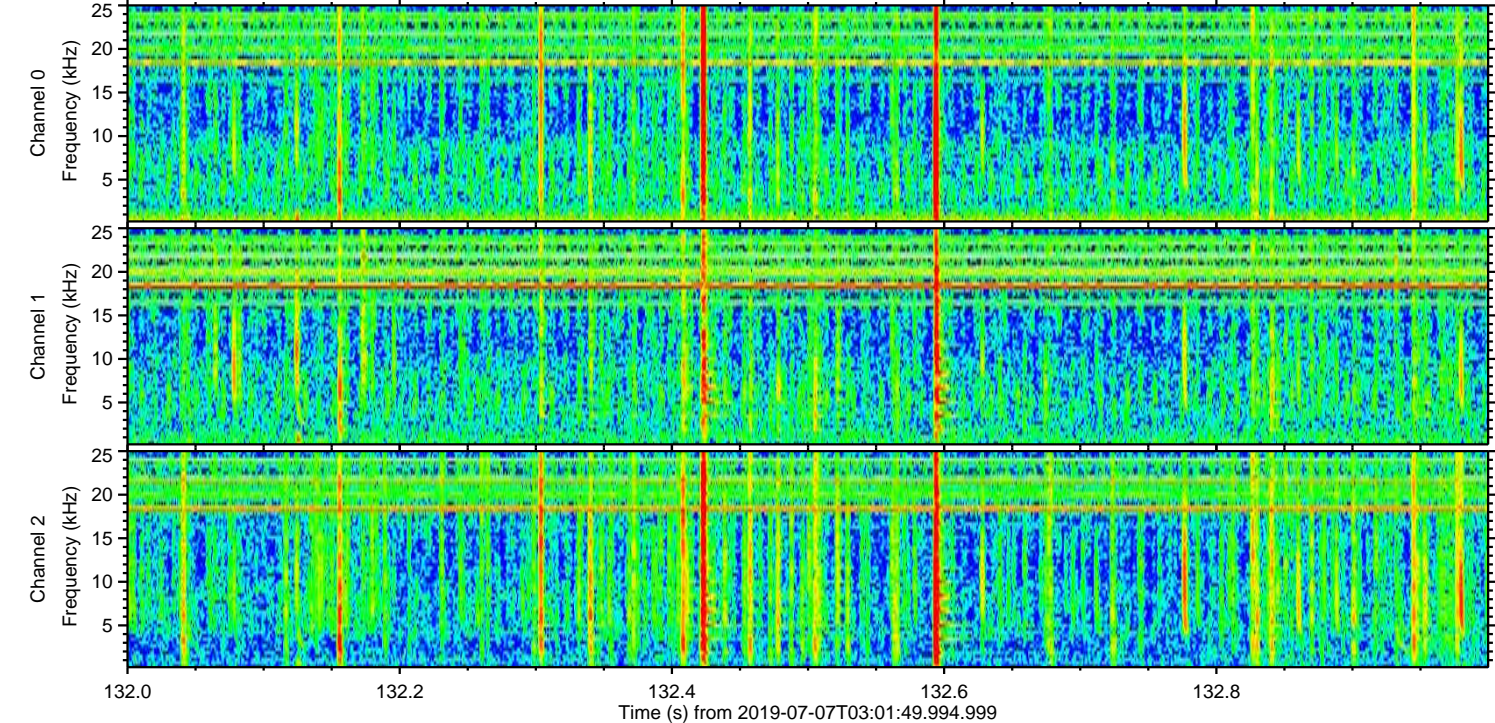
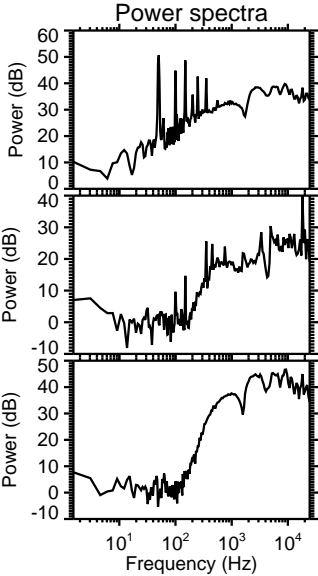
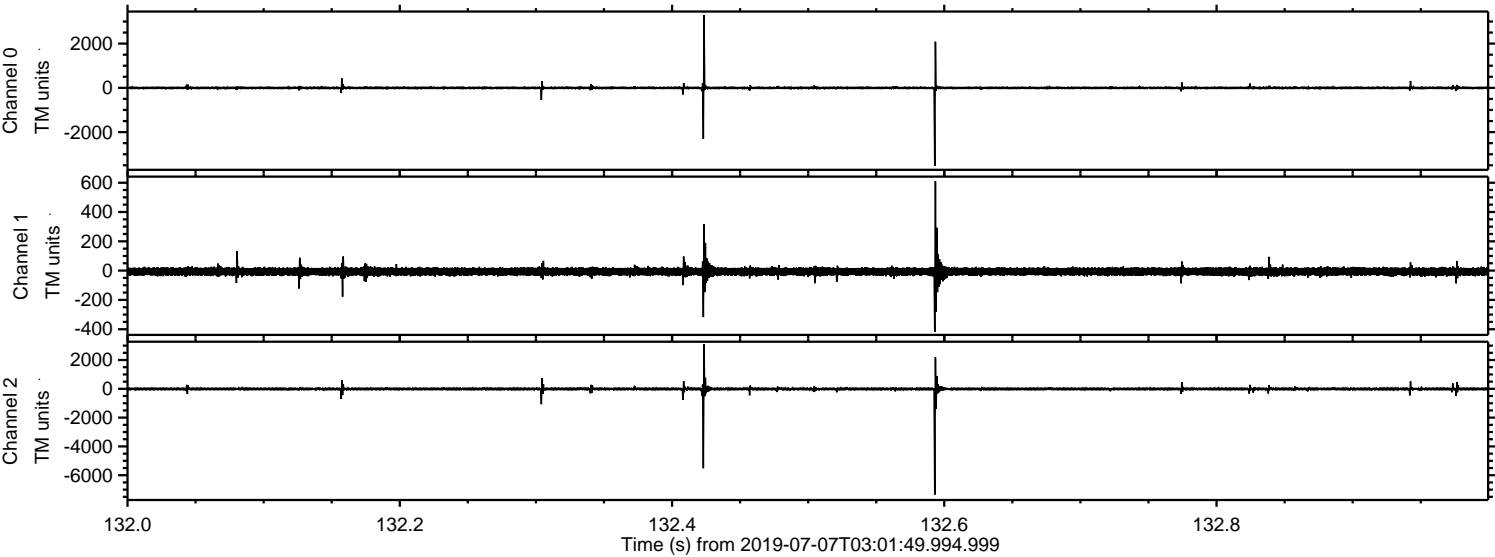


Processed Sun Jul 7 05:09:56 2019 by ELM ver.2012-10-06 from 001__elm20190707_030148__dat00.bin



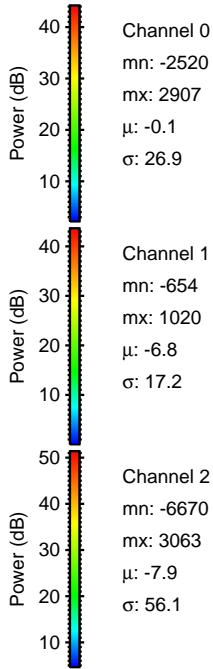
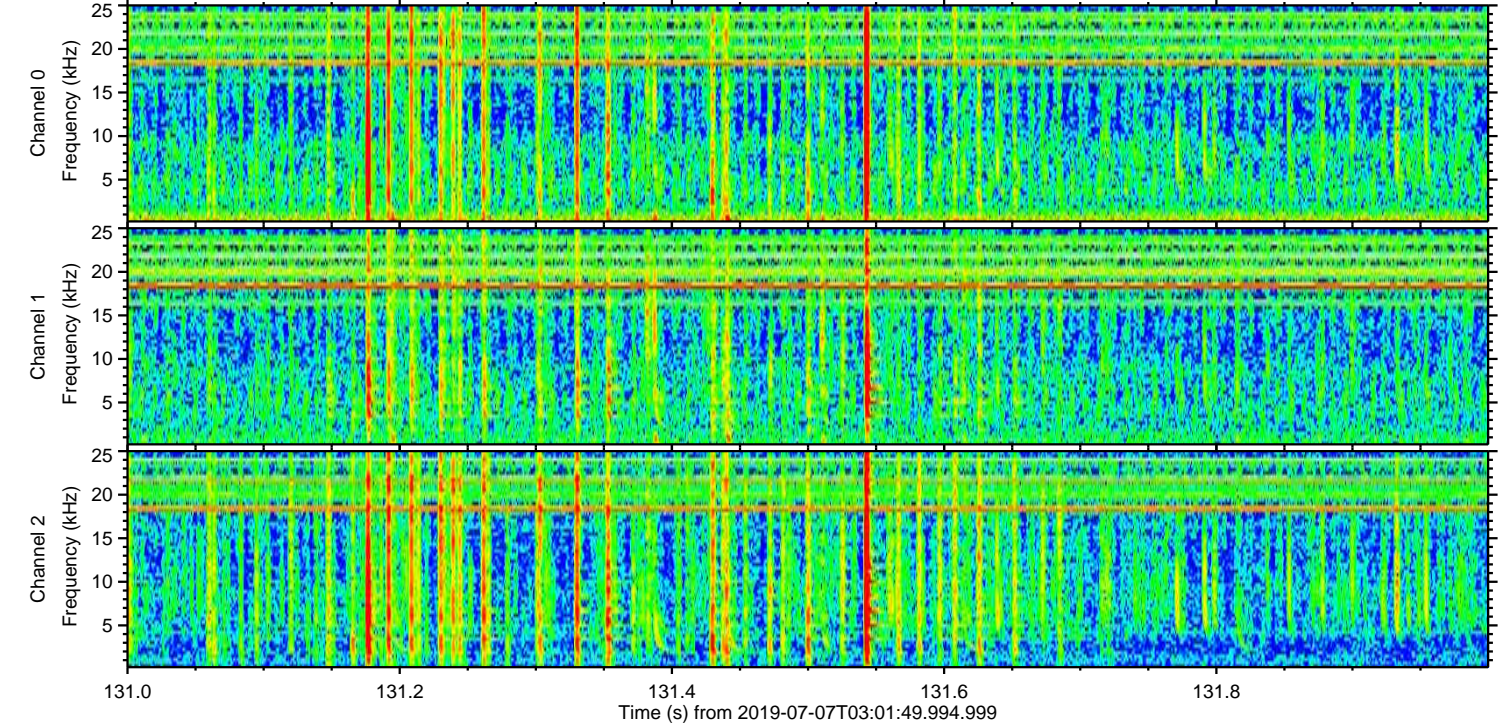
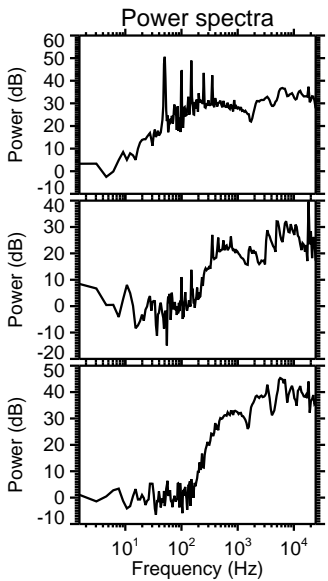
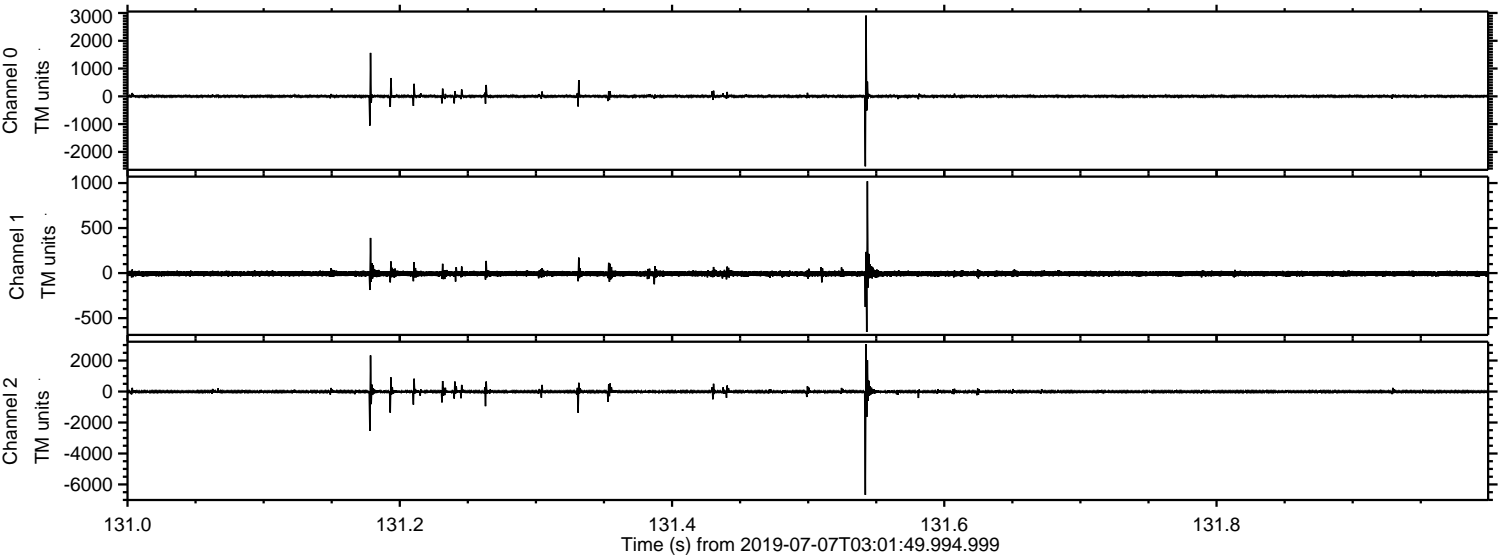
ELMAVAN 3D WAVEFORMS (Measured data sampled at 50 kHz) 51000 packets of 144 samples from 2019-07-07T03:01:49.994.999. Part 133/147

Processed Sun Jul 7 05:09:56 2019 by ELM ver.2012-10-06 from 001__elm20190707_030148__dat00.bin

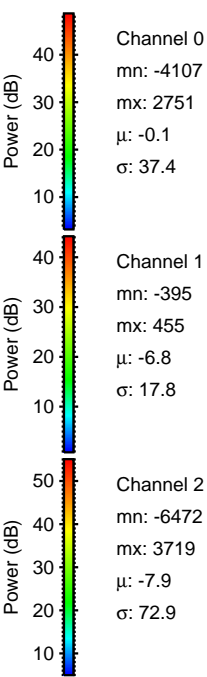
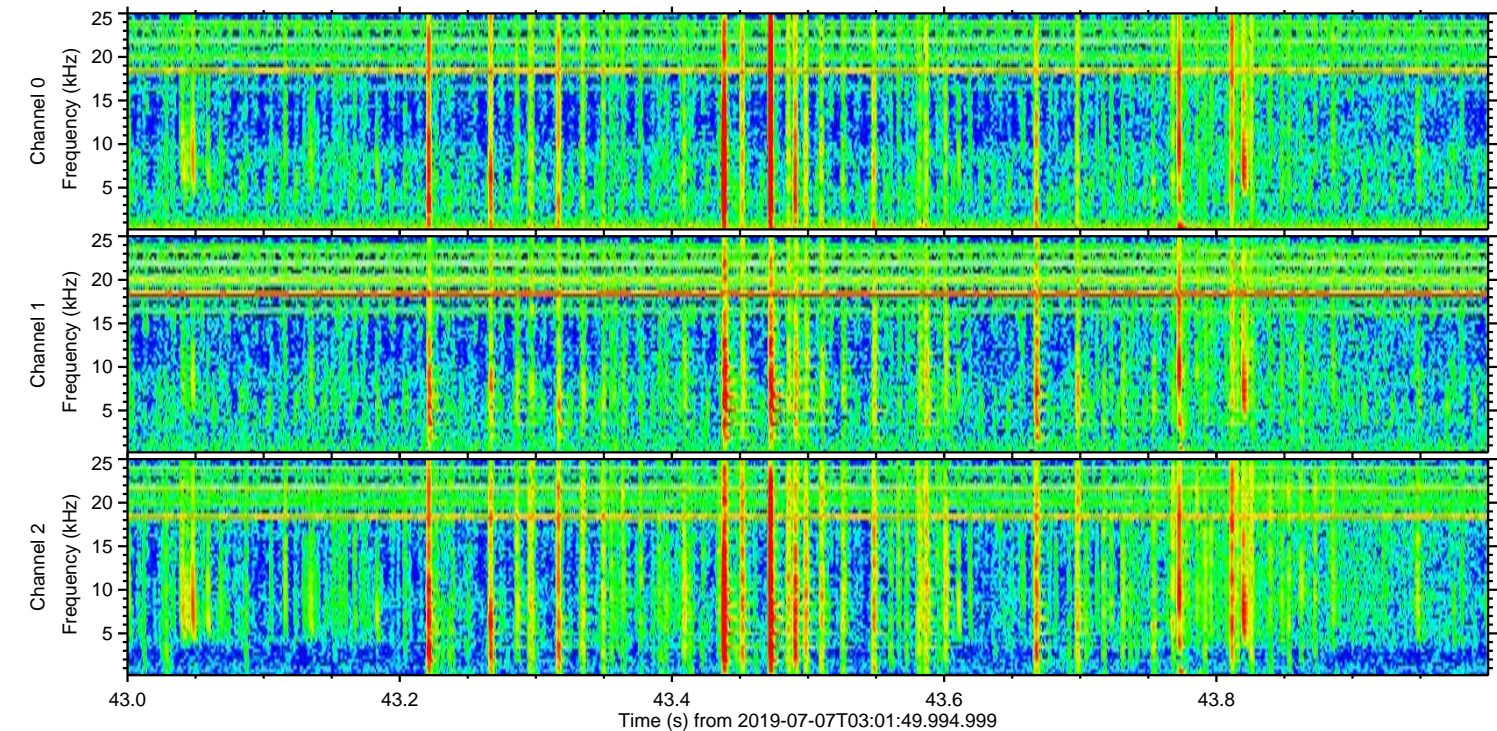
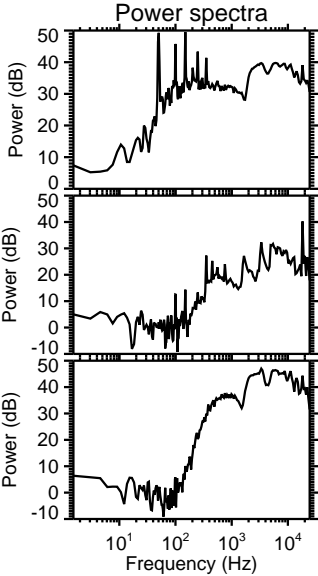
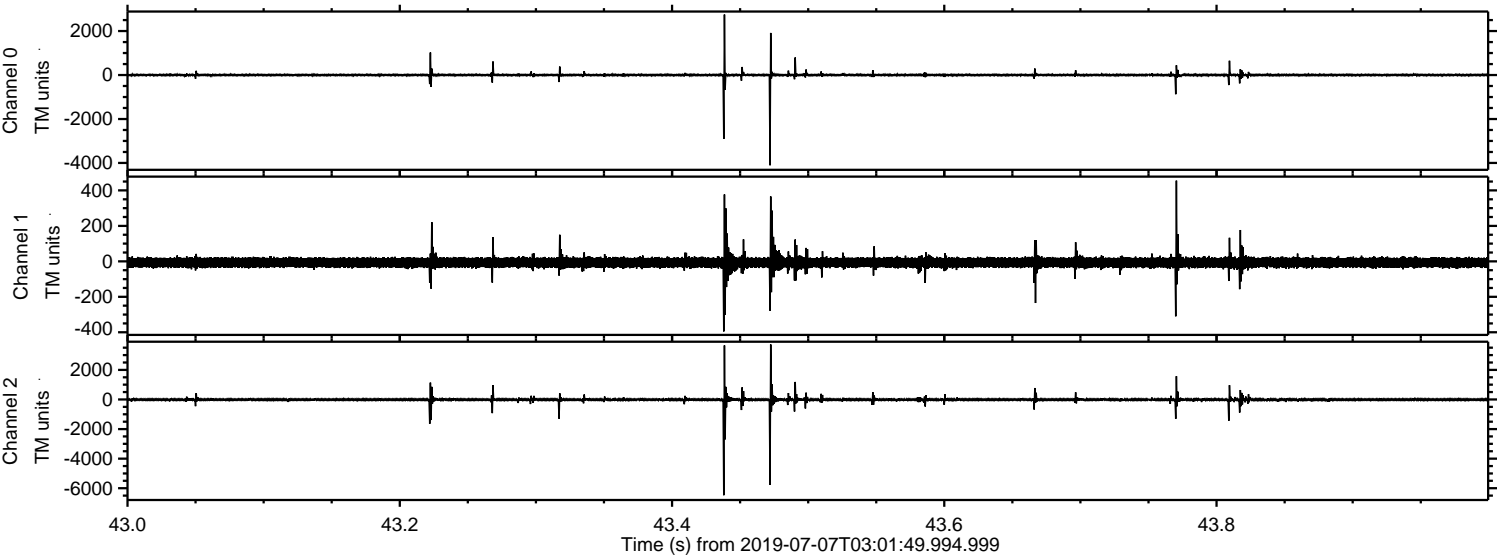


ELMAVAN 3D WAVEFORMS (Measured data sampled at 50 kHz) 51000 packets of 144 samples from 2019-07-07T03:01:49.994.999. Part 132/147

Processed Sun Jul 7 05:09:57 2019 by ELM ver.2012-10-06 from 001__elm20190707_030148__dat00.bin



Processed Sun Jul 7 05:09:58 2019 by ELM ver.2012-10-06 from 001__elm20190707_030148__dat00.bin

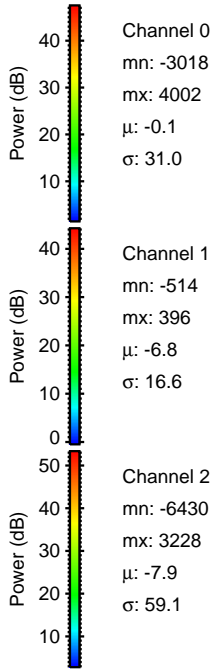
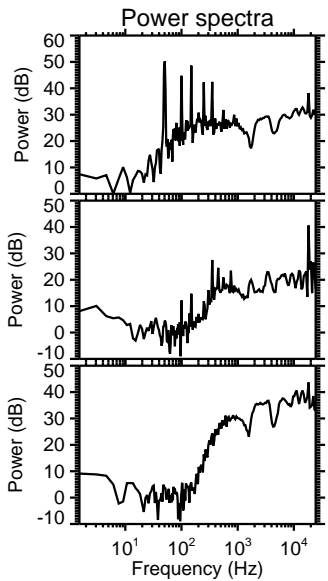
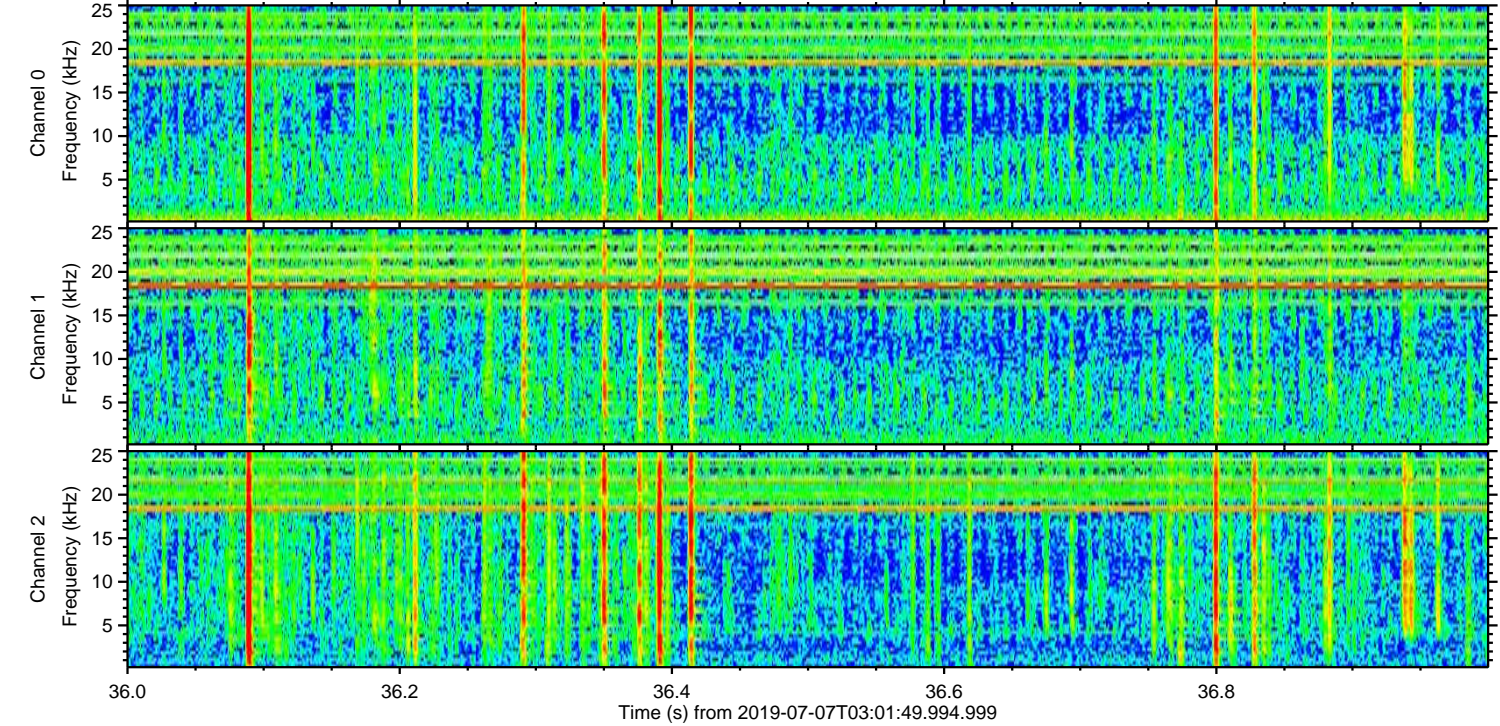
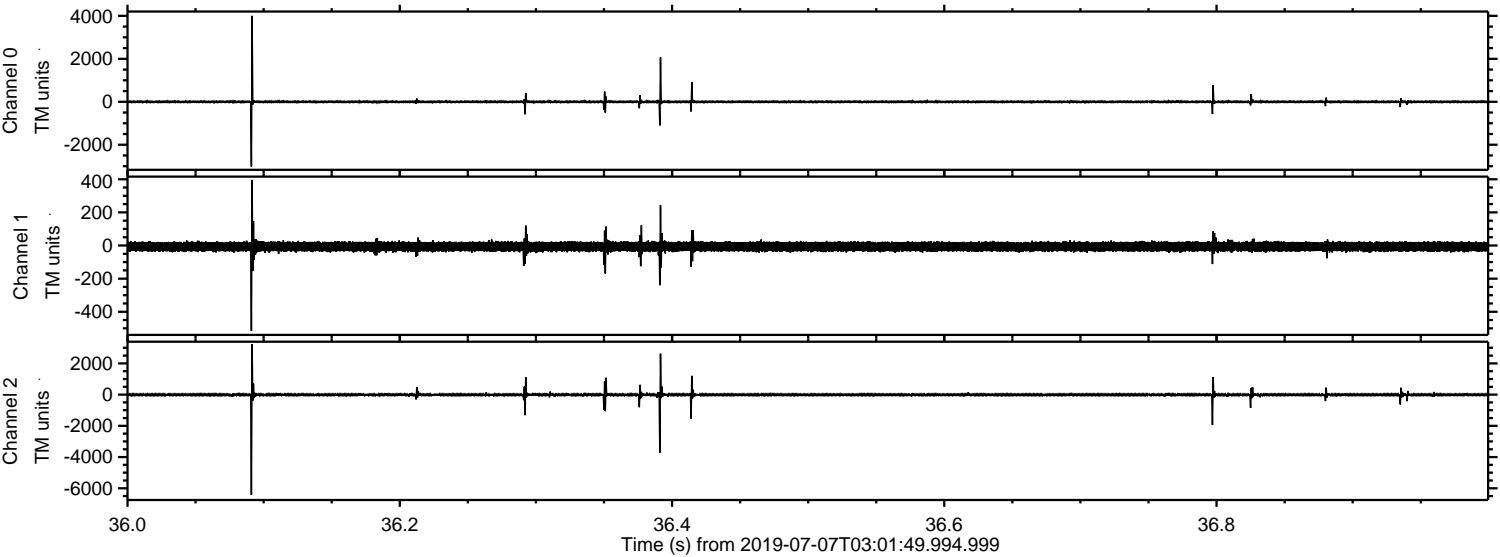


Channel 0
mn: -4107
mx: 2751
 μ : -0.1
 σ : 37.4

Channel 1
mn: -395
mx: 455
 μ : -6.8
 σ : 17.8

Channel 2
mn: -6472
mx: 3719
 μ : -7.9
 σ : 72.9

Processed Sun Jul 7 05:09:58 2019 by ELM ver.2012-10-06 from 001__elm20190707_030148__dat00.bin



Processed Sun Jul 7 05:09:59 2019 by ELM ver.2012-10-06 from 001__elm20190707_030148__dat00.bin

