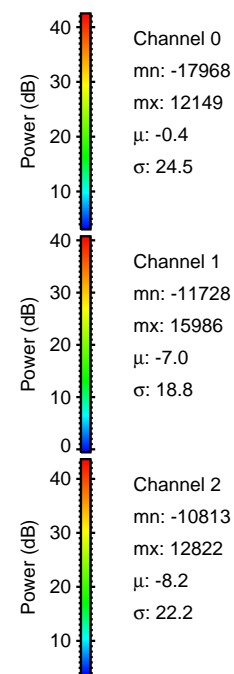
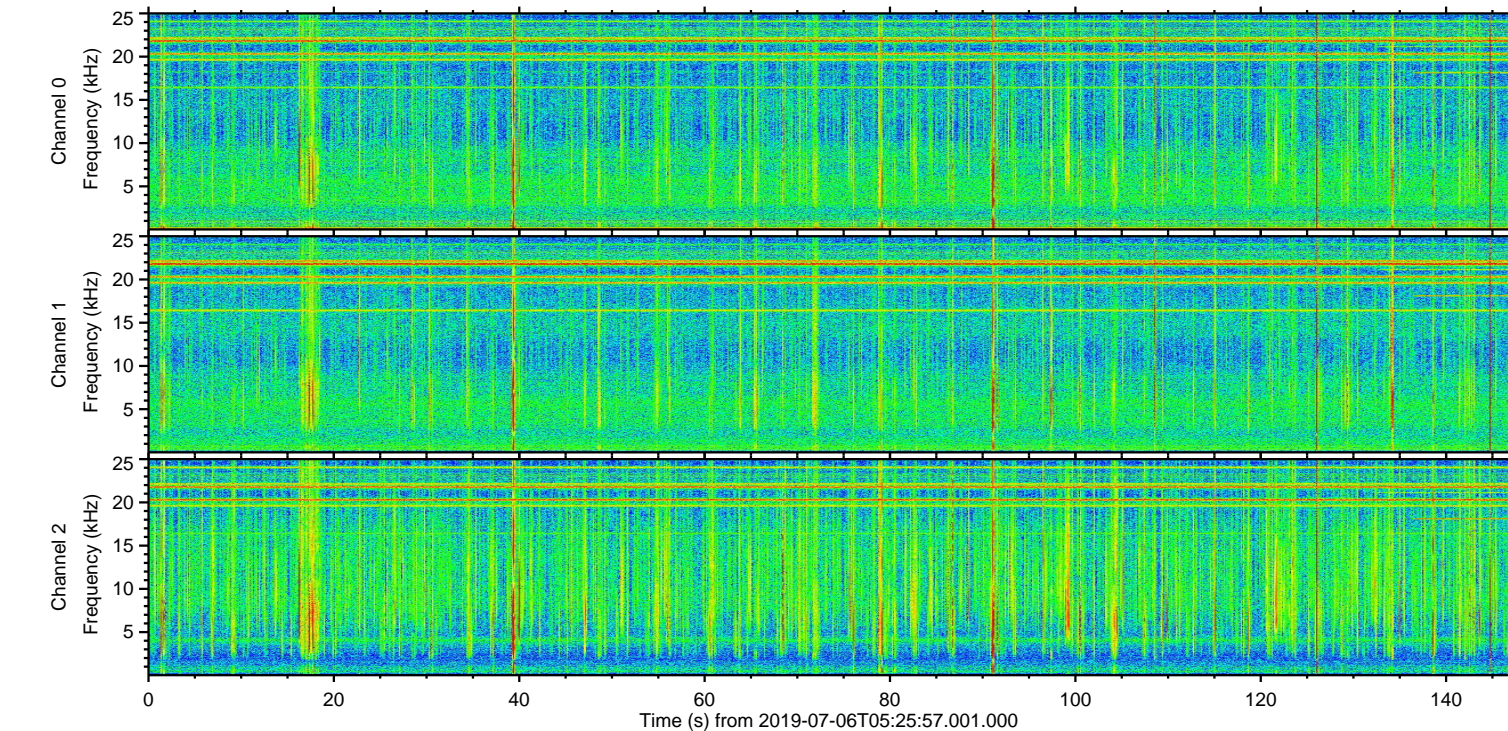
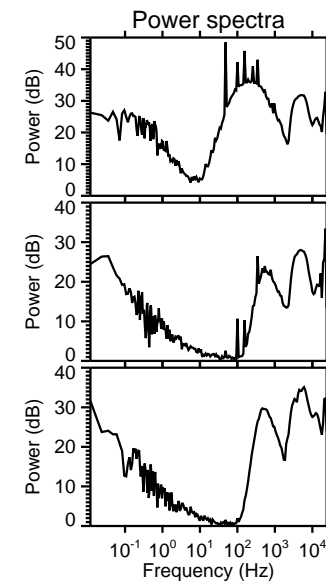
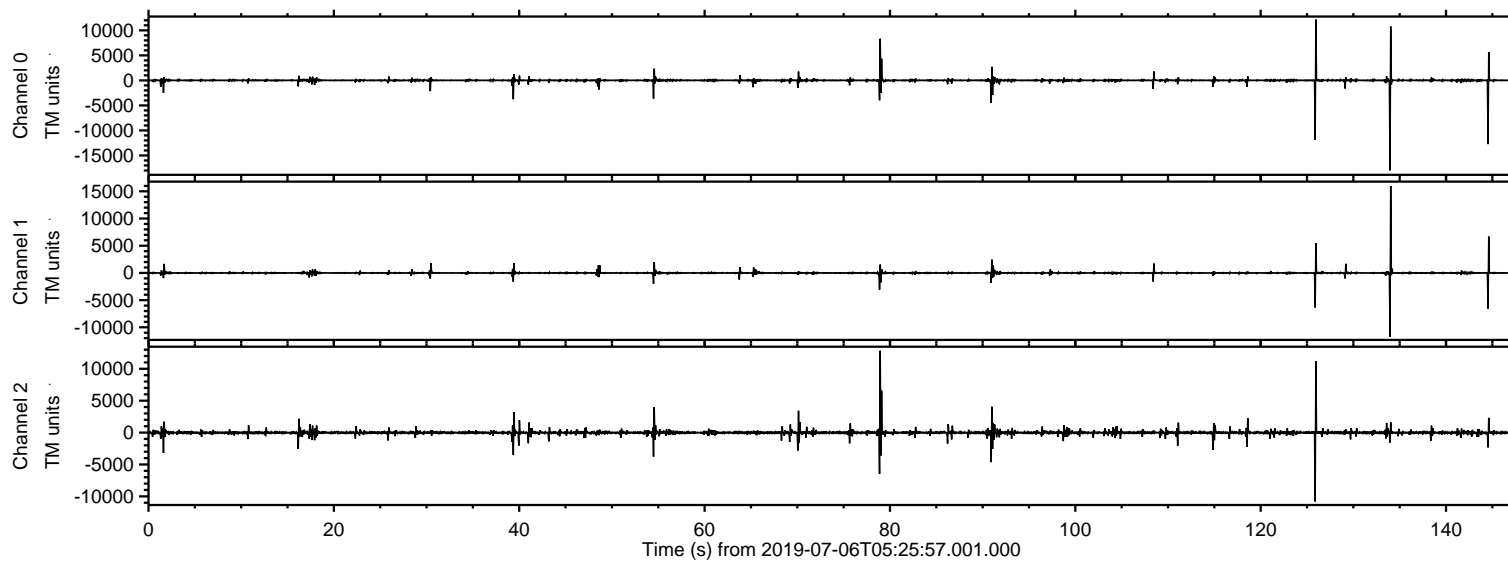


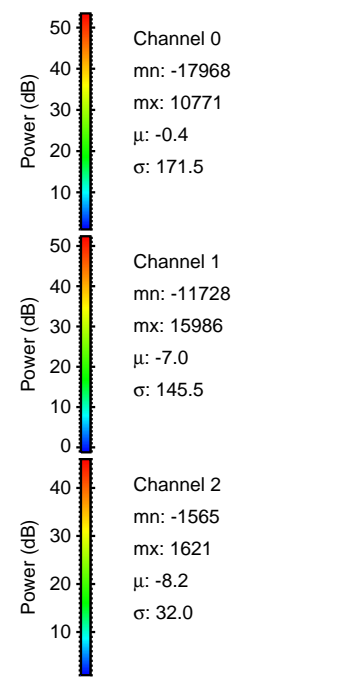
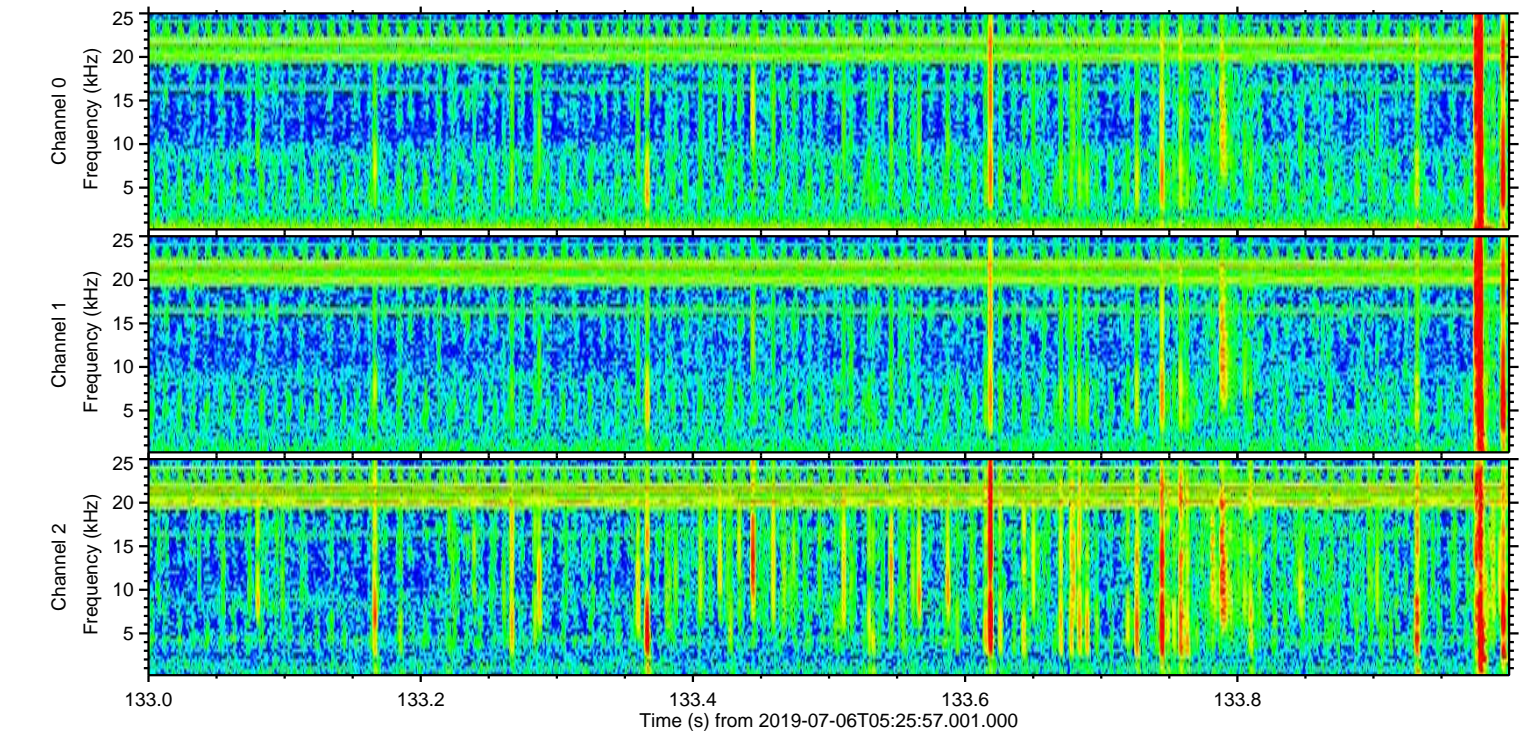
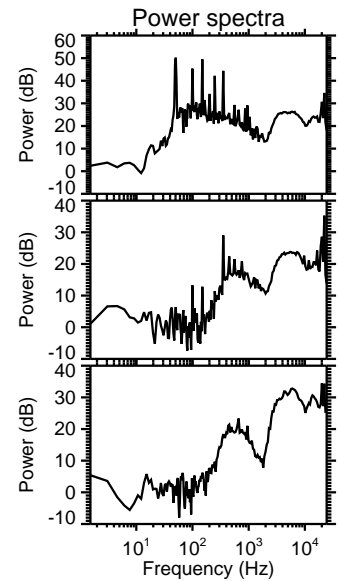
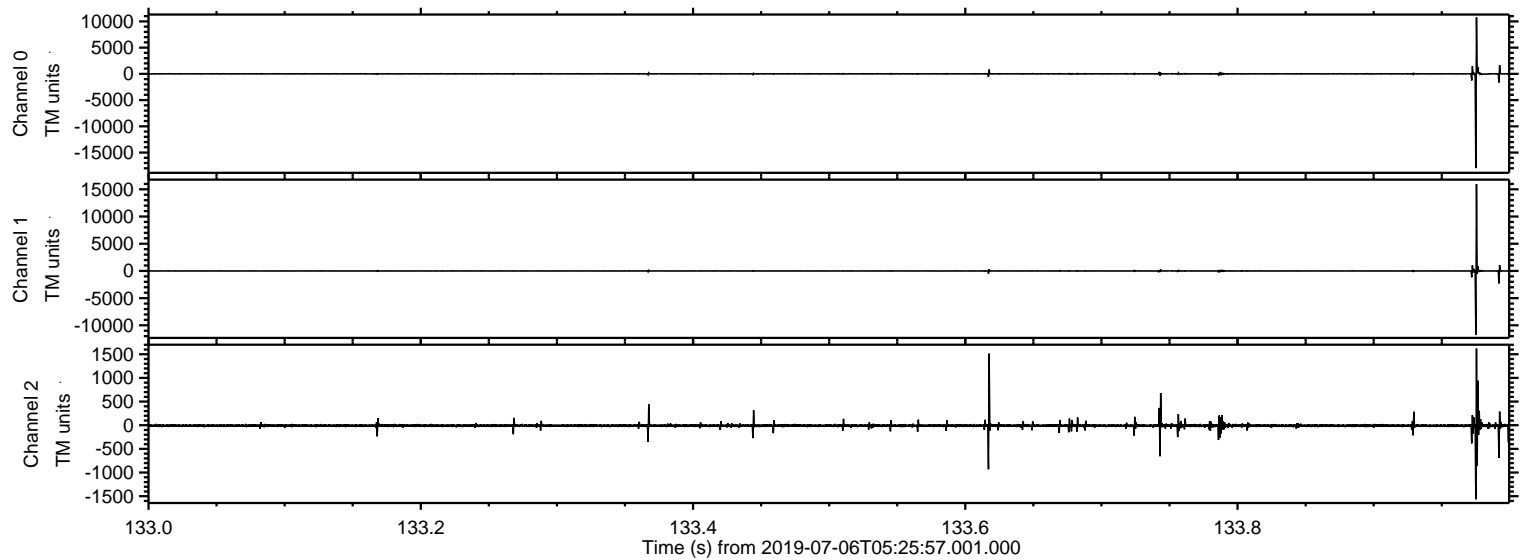
ELMAVAN 3D WAVEFORMS (Measured data sampled at 50 kHz) 51000 packets of 144 samples from 2019-07-06T05:25:57.001.000.

Processed Sat Jul 6 07:34:00 2019 by ELM ver.2012-10-06 from 001__elm20190706_052555__dat00.bin

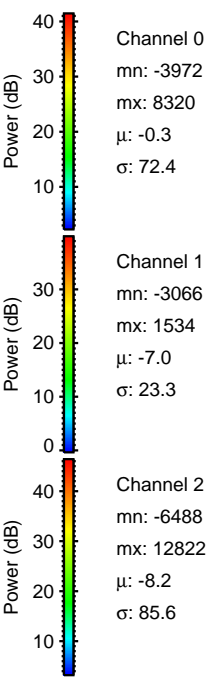
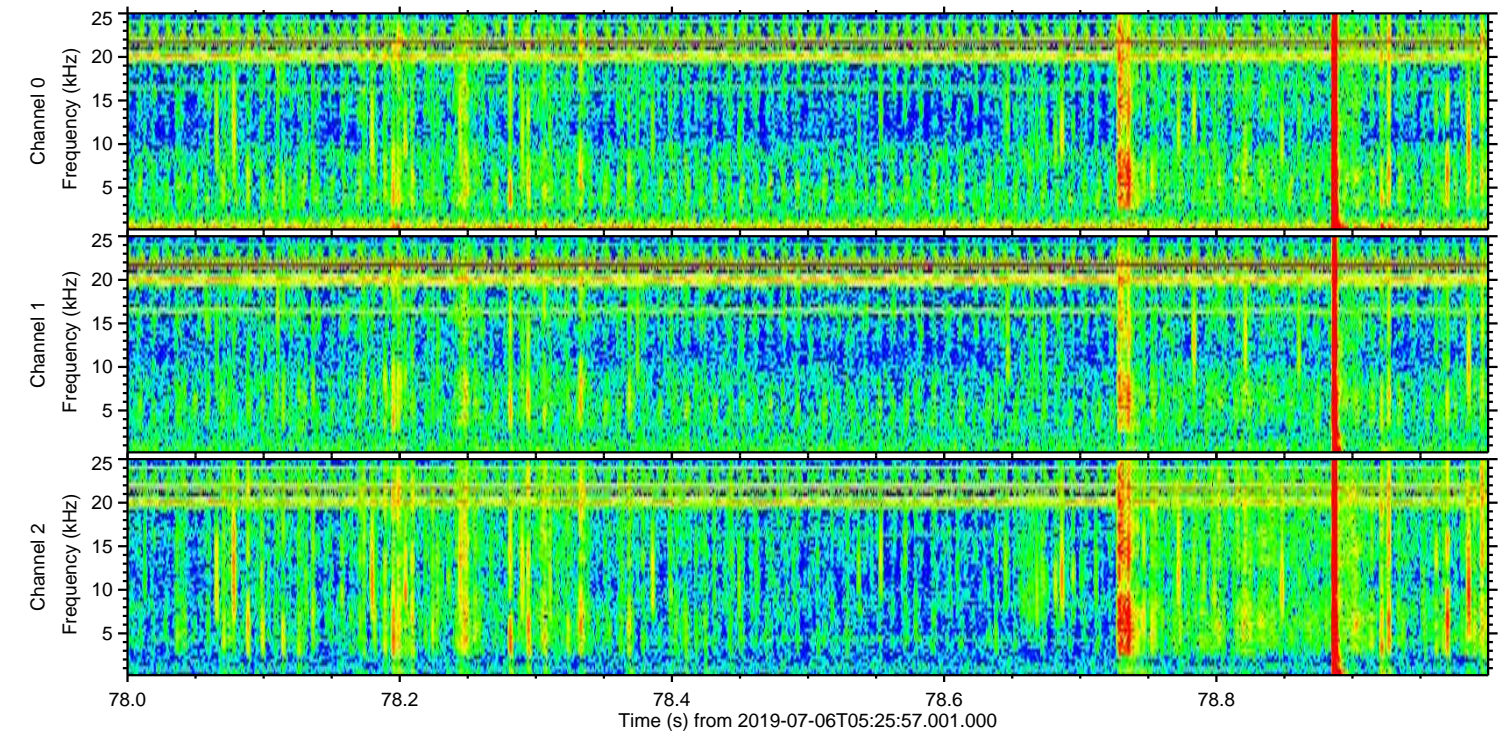
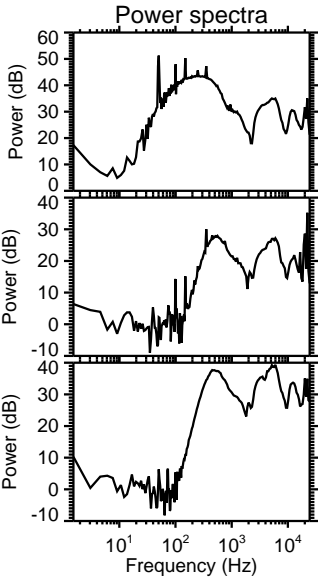
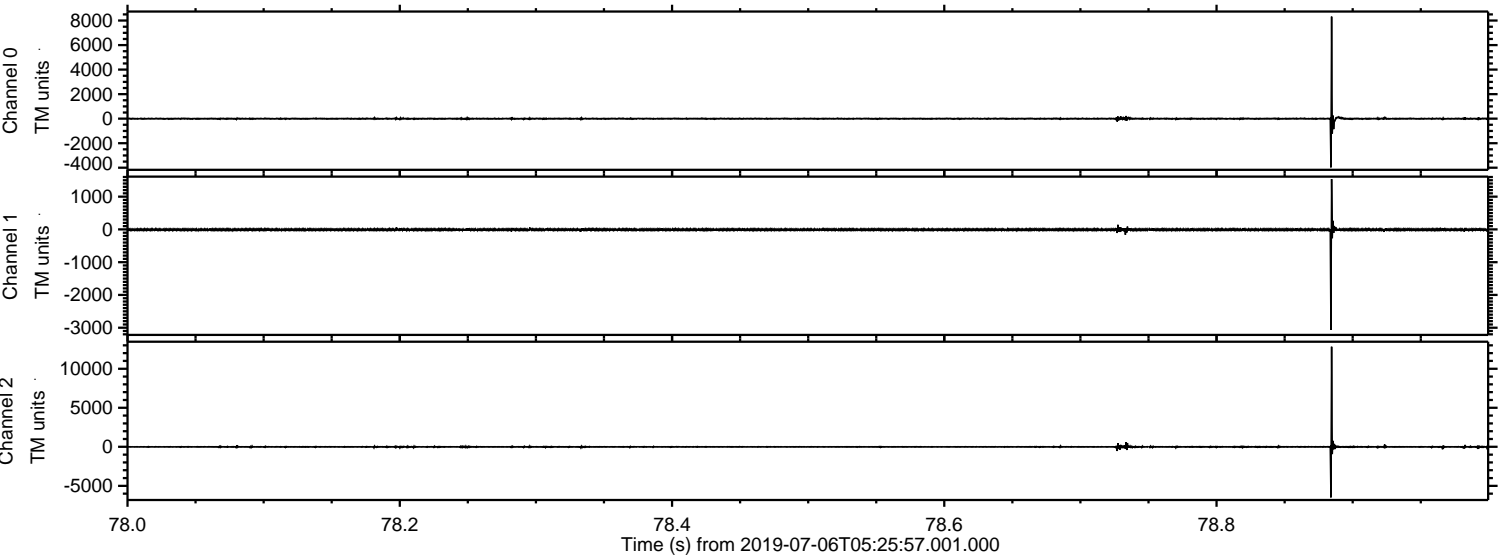


ELMAVAN 3D WAVEFORMS (Measured data sampled at 50 kHz) 51000 packets of 144 samples from 2019-07-06T05:25:57.001.000. Part 134/147

Processed Sat Jul 6 07:34:09 2019 by ELM ver.2012-10-06 from 001__elm20190706_052555__dat00.bin

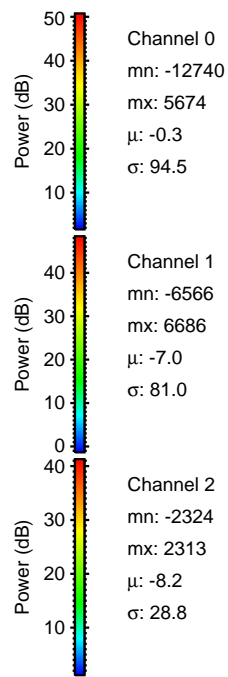
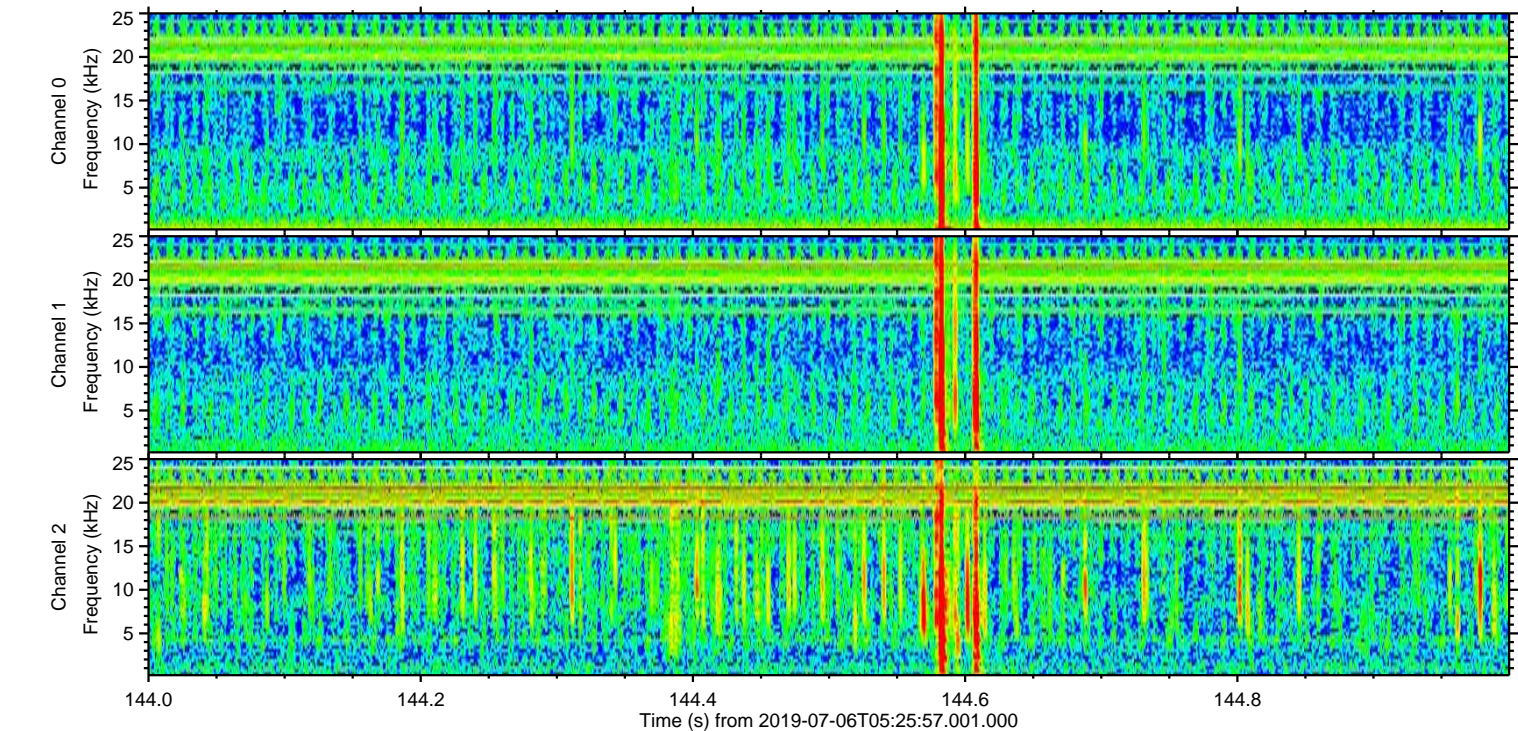
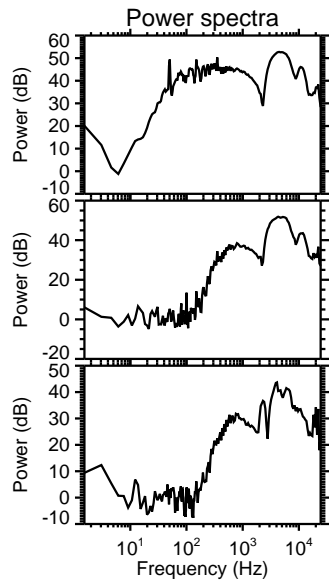
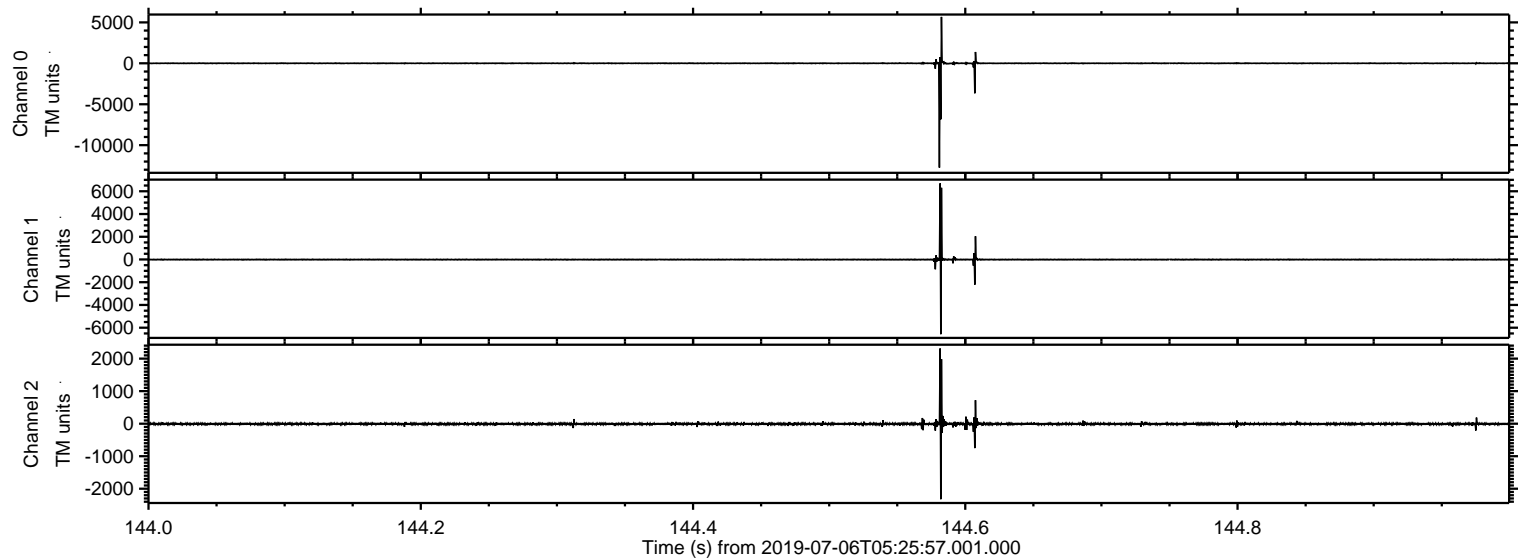


Processed Sat Jul 6 07:34:10 2019 by ELM ver.2012-10-06 from 001__elm20190706_052555__dat00.bin



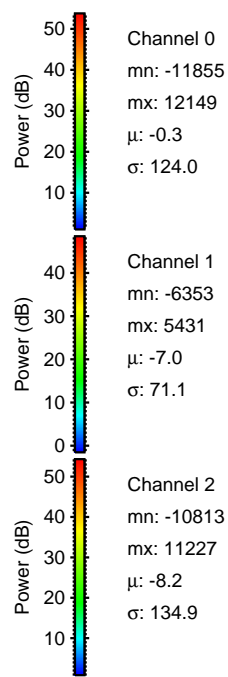
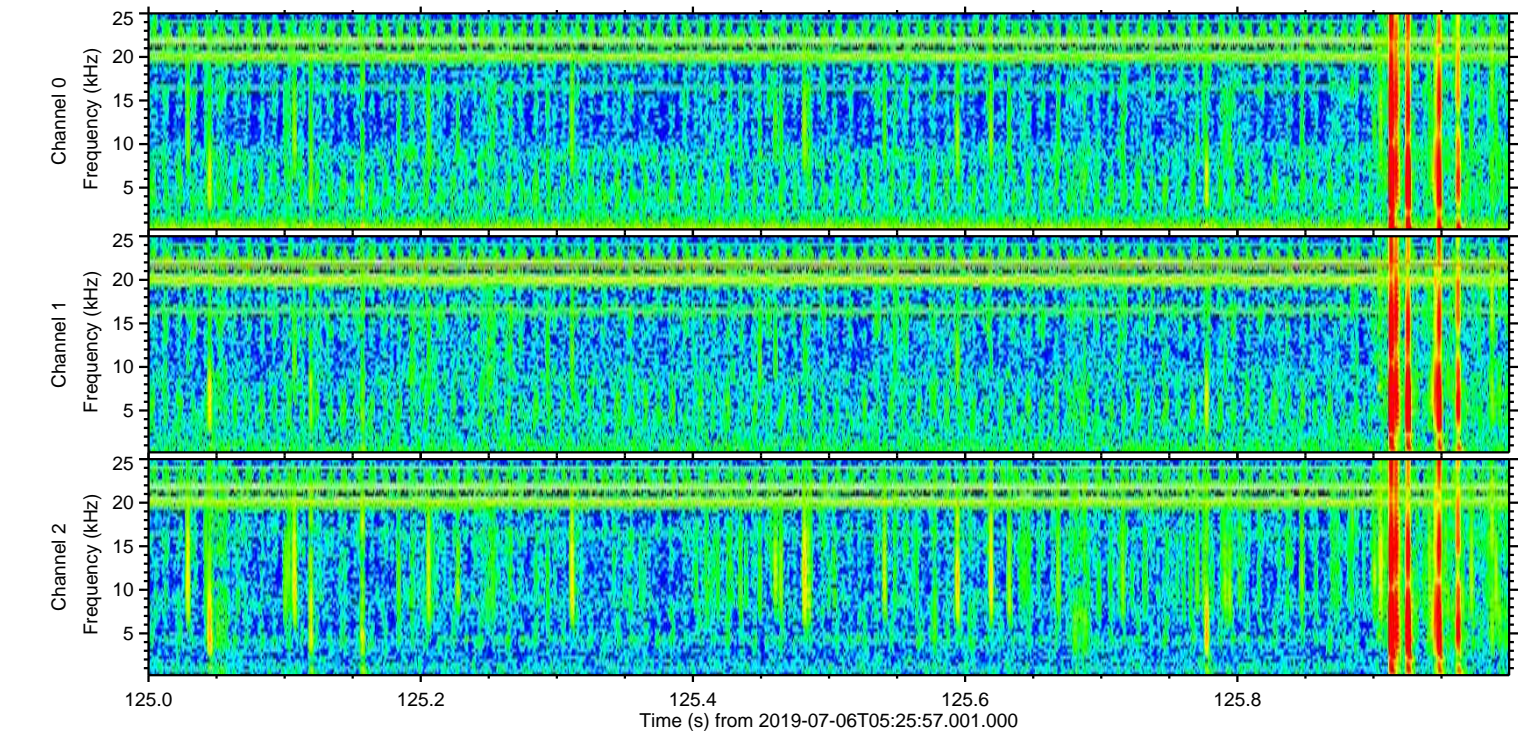
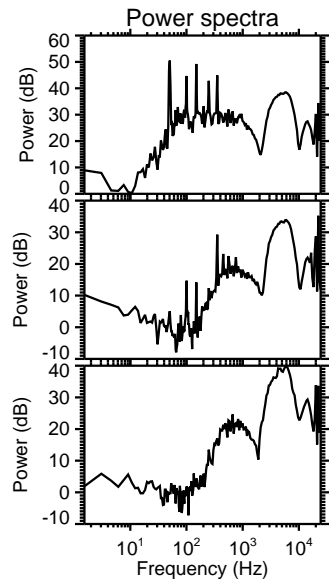
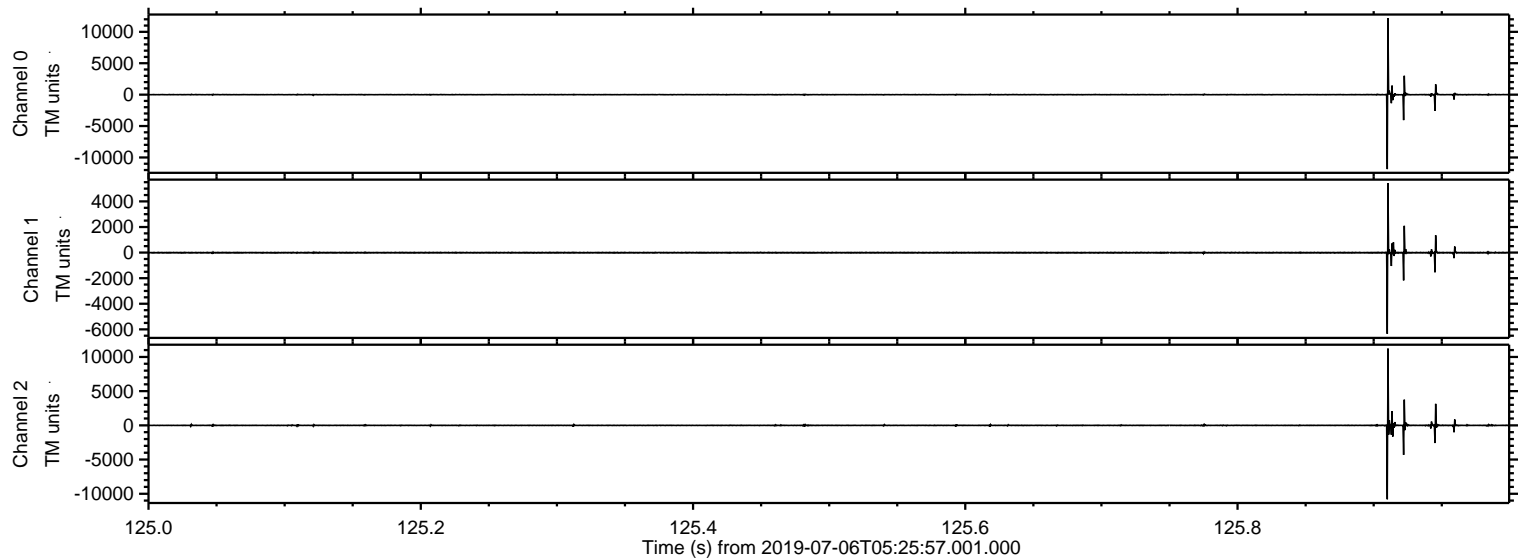
ELMAVAN 3D WAVEFORMS (Measured data sampled at 50 kHz) 51000 packets of 144 samples from 2019-07-06T05:25:57.001.000. Part 145/147

Processed Sat Jul 6 07:34:10 2019 by ELM ver.2012-10-06 from 001__elm20190706_052555__dat00.bin

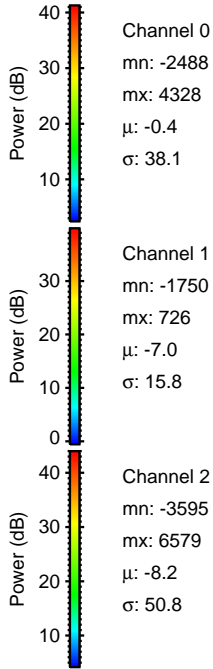
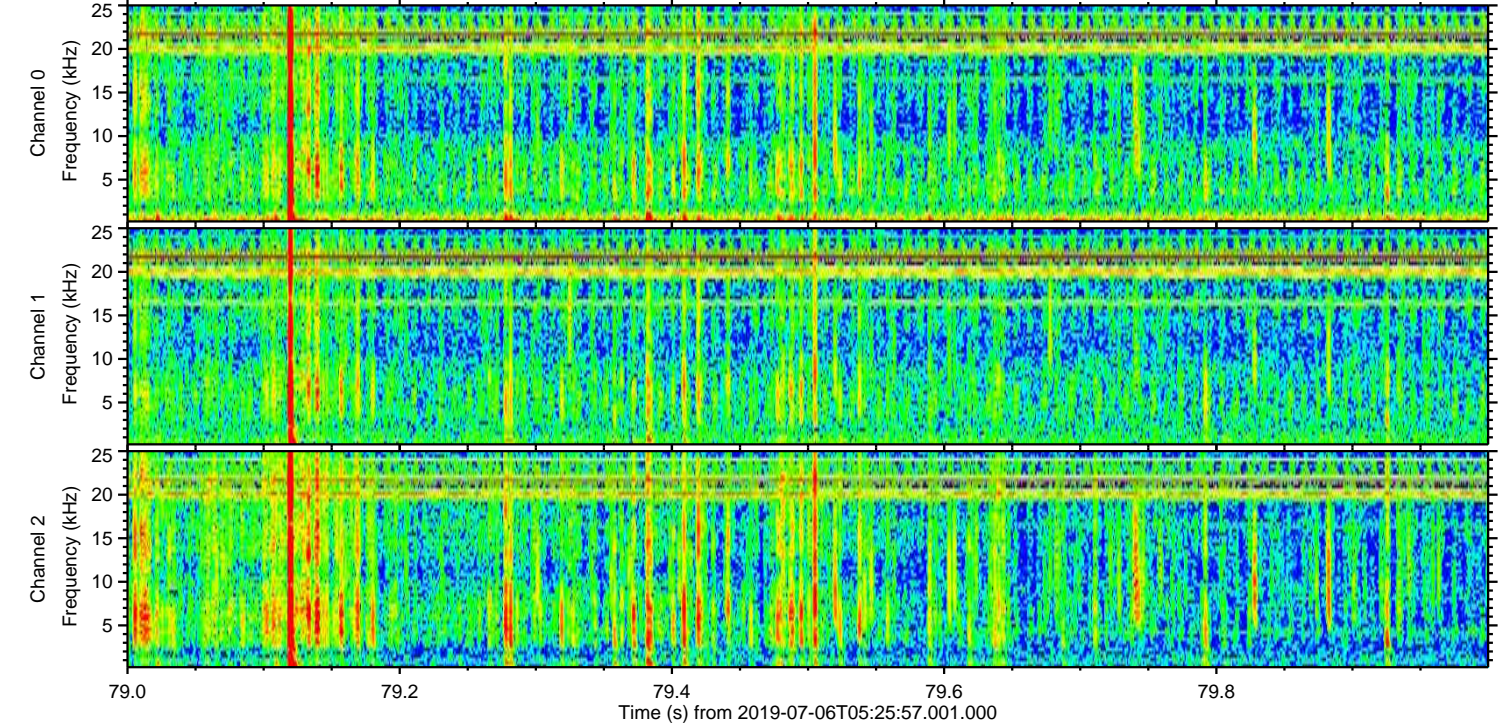
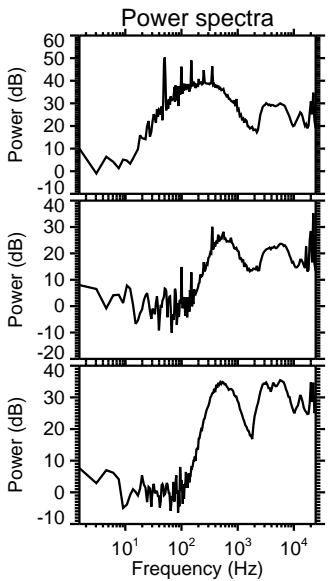
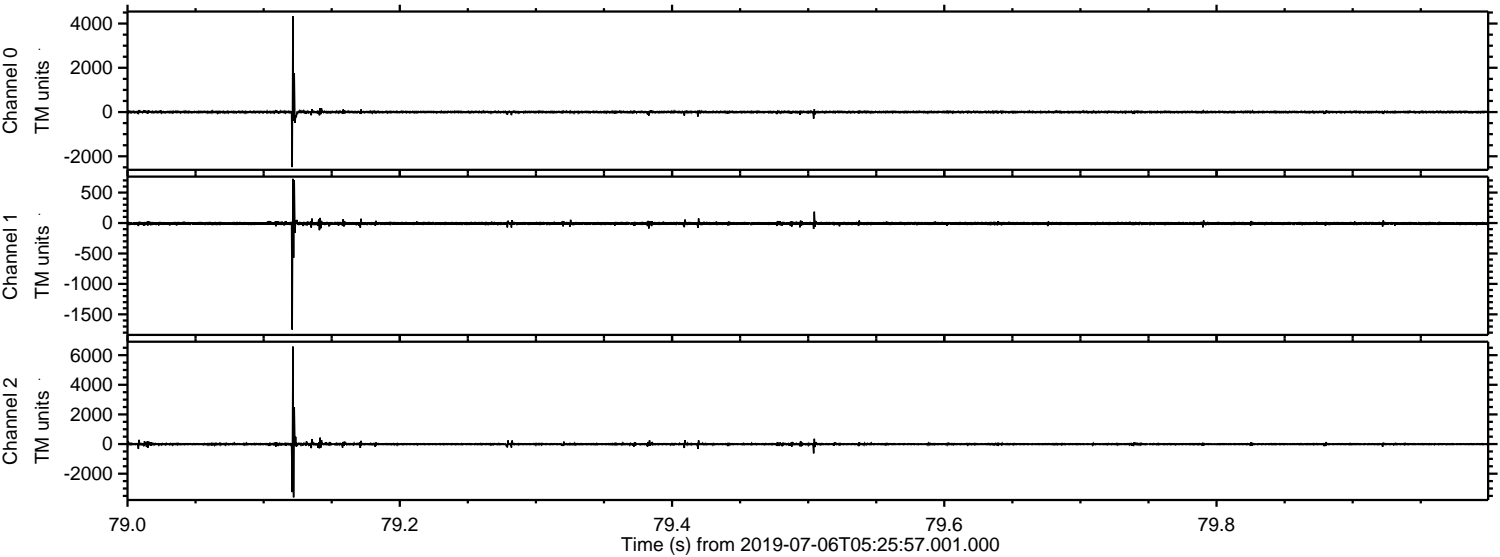


ELMAVAN 3D WAVEFORMS (Measured data sampled at 50 kHz) 51000 packets of 144 samples from 2019-07-06T05:25:57.001.000. Part 126/147

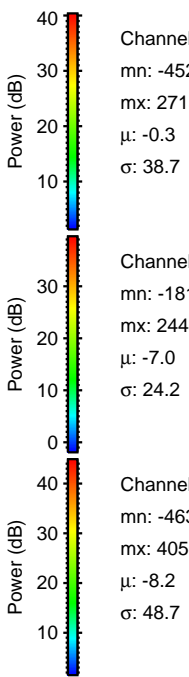
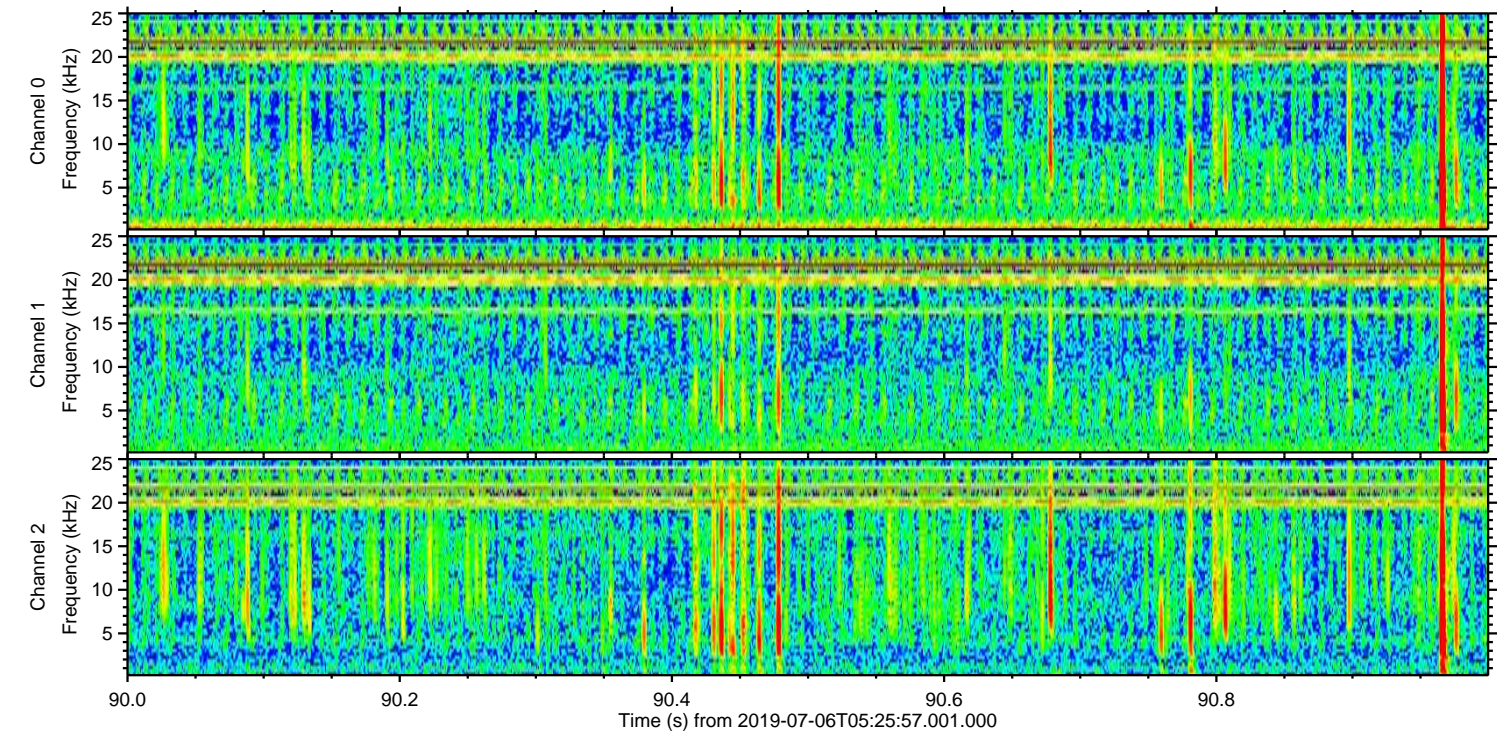
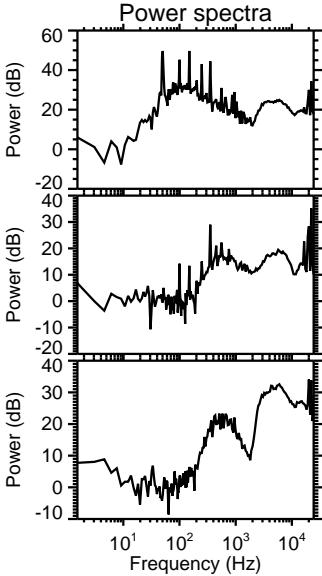
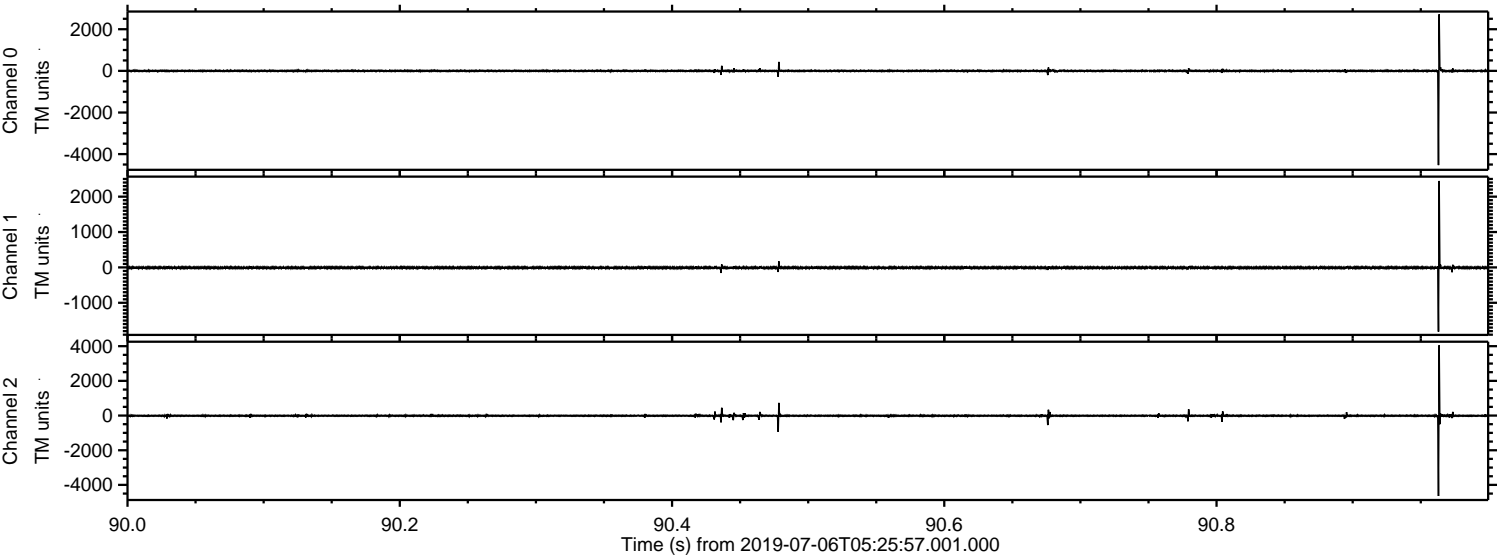
Processed Sat Jul 6 07:34:11 2019 by ELM ver.2012-10-06 from 001__elm20190706_052555__dat00.bin



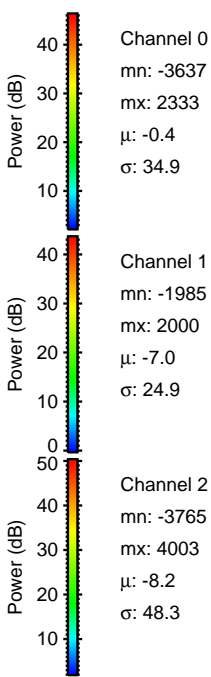
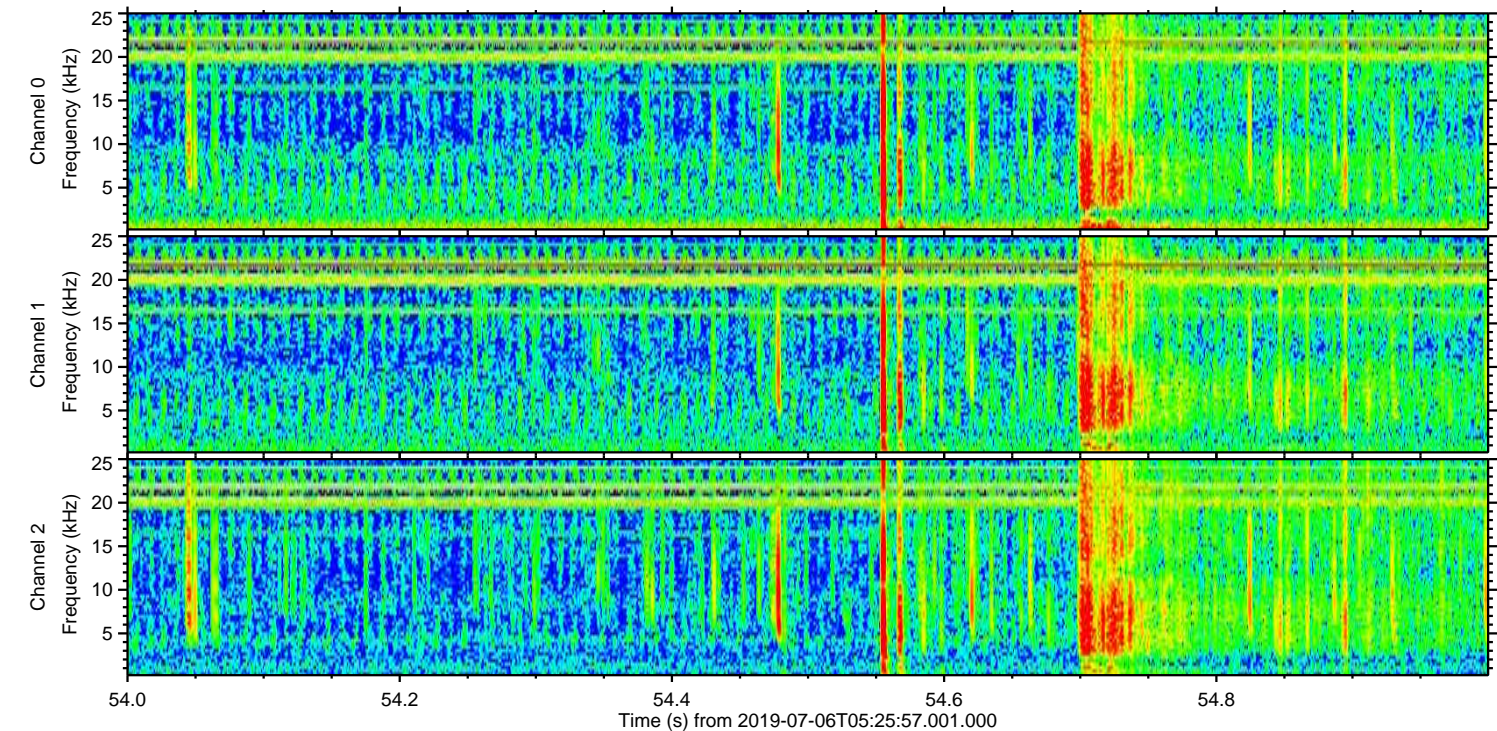
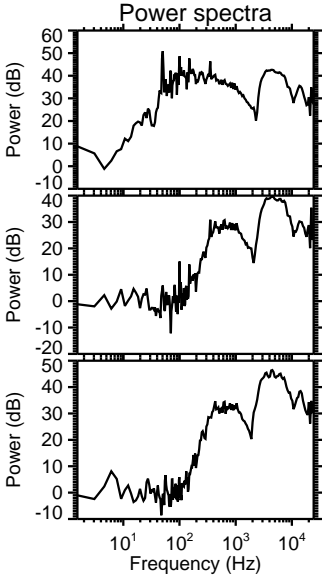
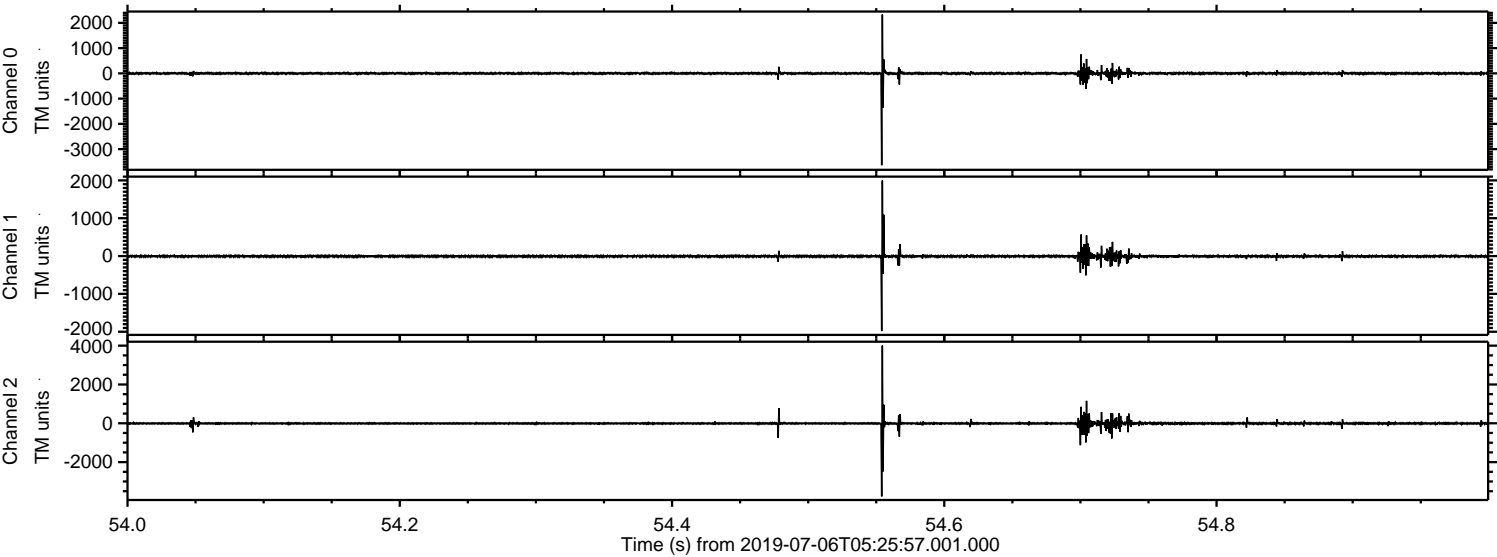
Processed Sat Jul 6 07:34:12 2019 by ELM ver.2012-10-06 from 001__elm20190706_052555__dat00.bin



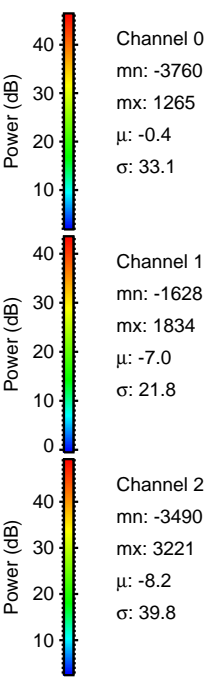
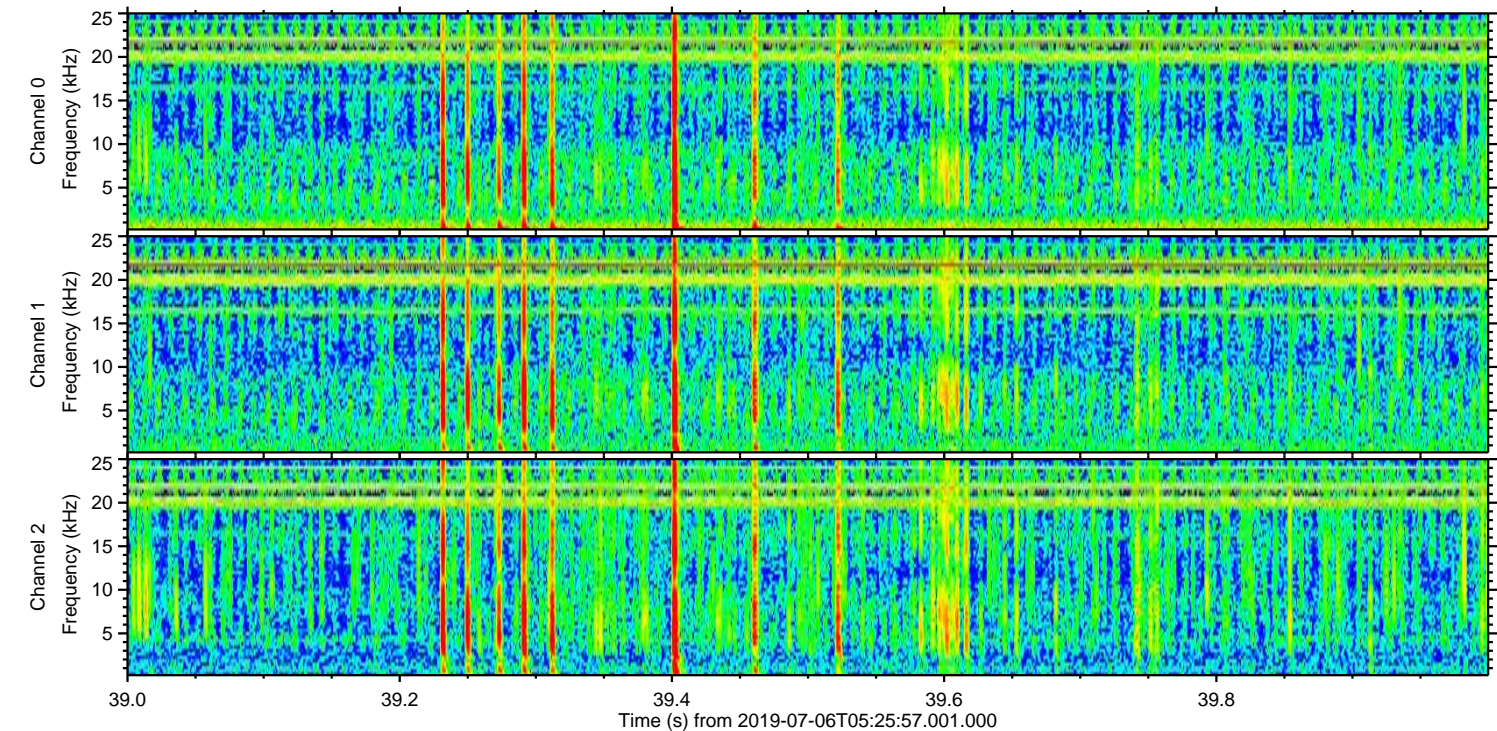
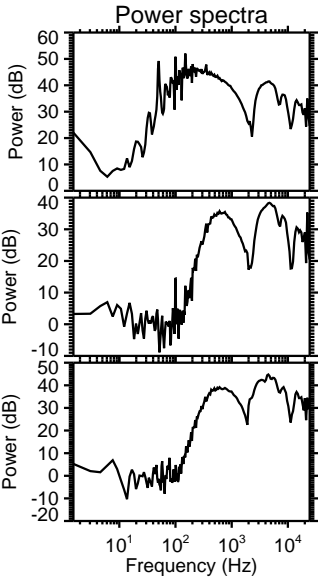
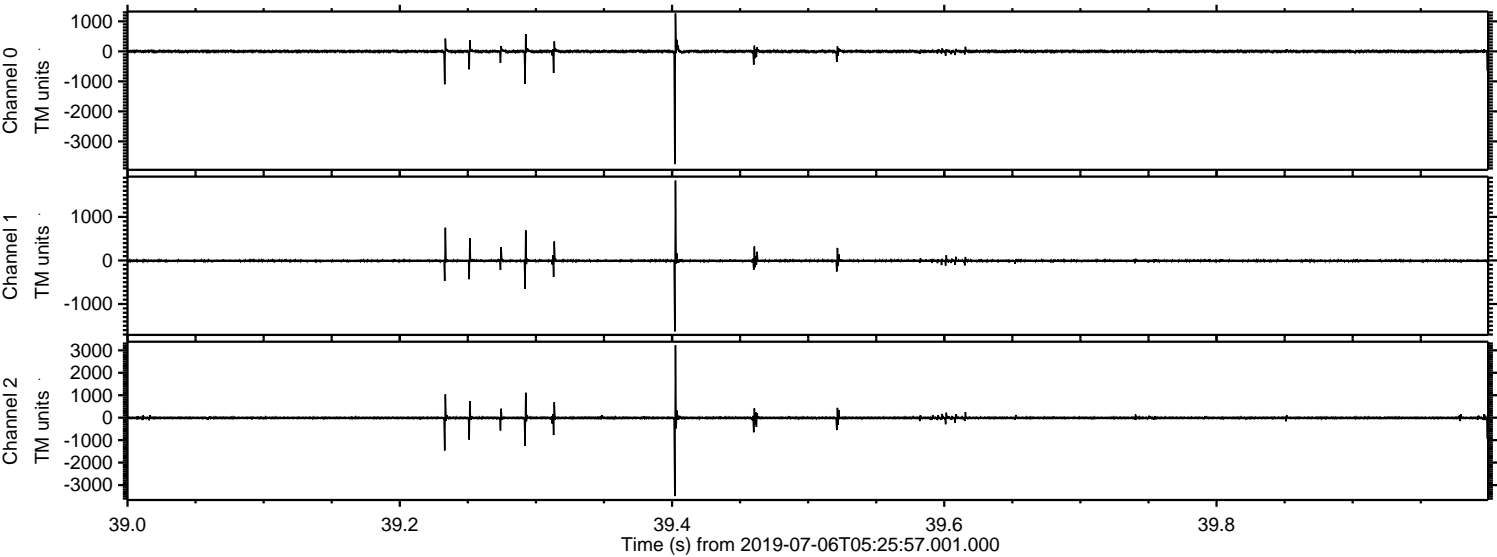
Processed Sat Jul 6 07:34:12 2019 by ELM ver.2012-10-06 from 001__elm20190706_052555__dat00.bin



Processed Sat Jul 6 07:34:13 2019 by ELM ver.2012-10-06 from 001__elm20190706_052555__dat00.bin



Processed Sat Jul 6 07:34:14 2019 by ELM ver.2012-10-06 from 001__elm20190706_052555__dat00.bin



Channel 0
mn: -3760
mx: 1265
 μ : -0.4
 σ : 33.1

Channel 1
mn: -1628
mx: 1834
 μ : -7.0
 σ : 21.8

Channel 2
mn: -3490
mx: 3221
 μ : -8.2
 σ : 39.8

Processed Sat Jul 6 07:34:15 2019 by ELM ver.2012-10-06 from 001__elm20190706_052555__dat00.bin

