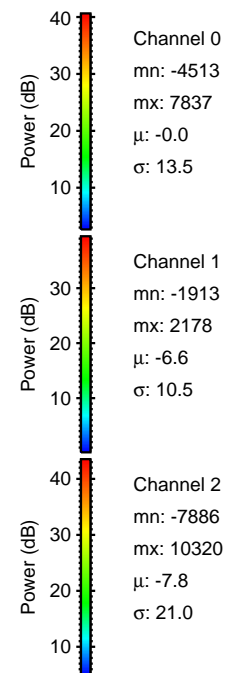
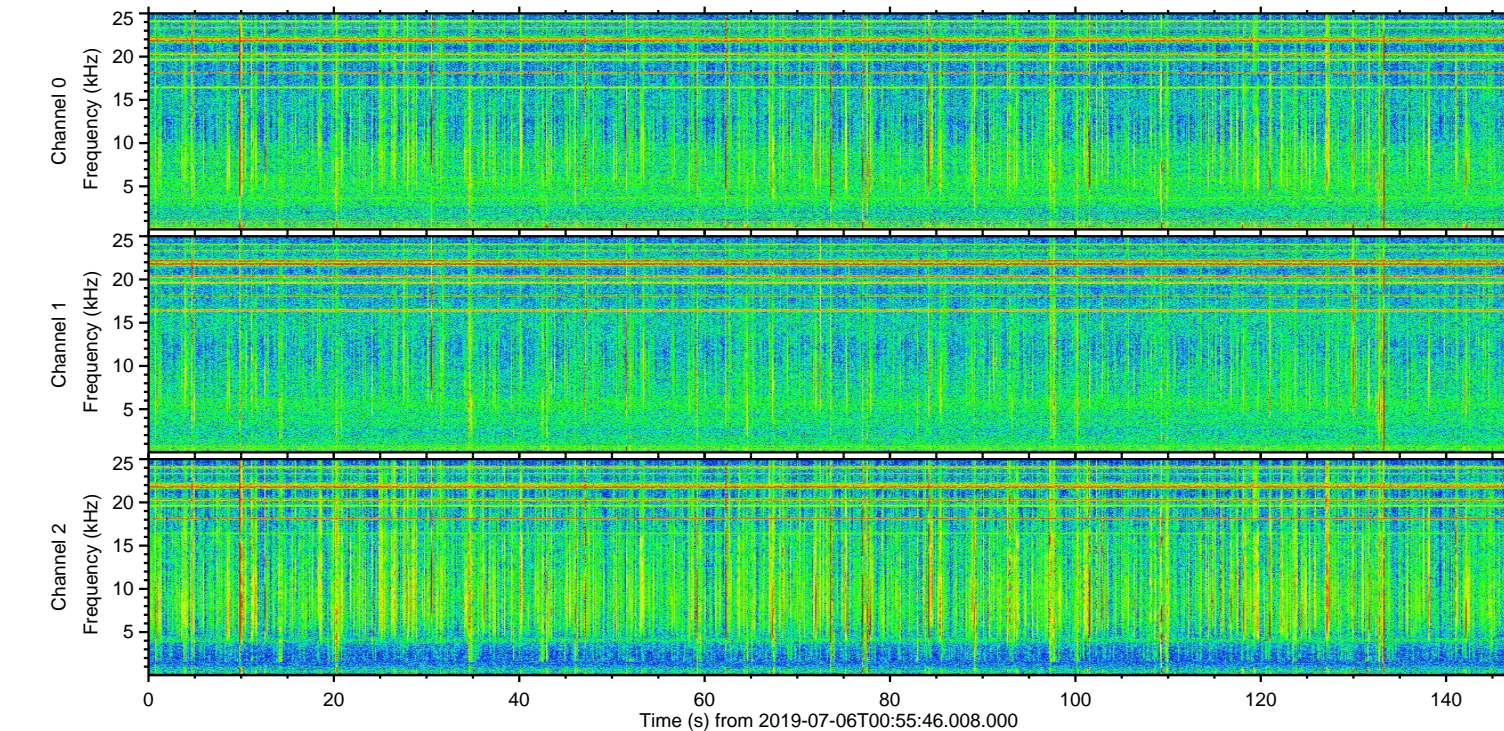
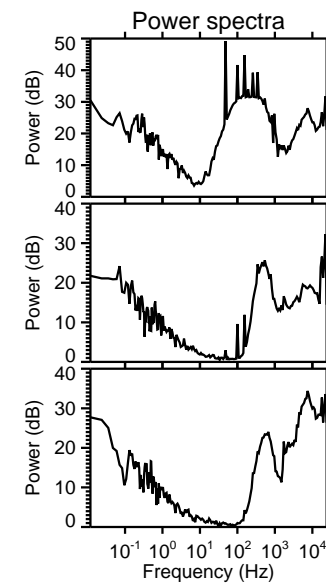
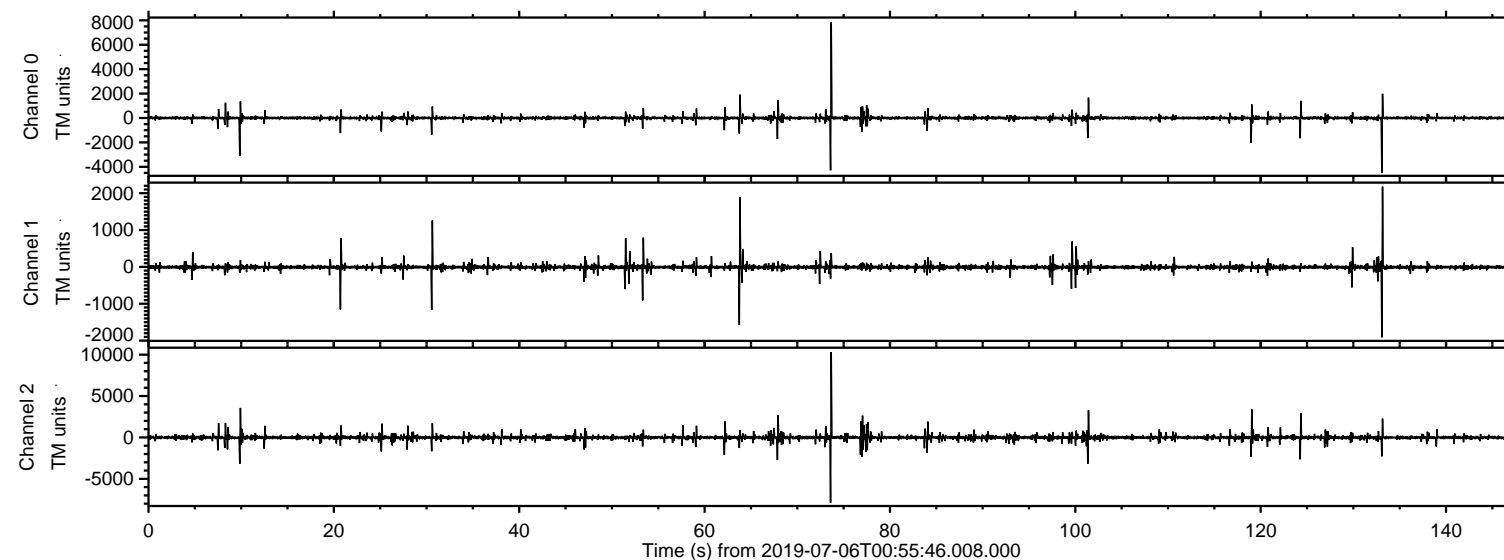
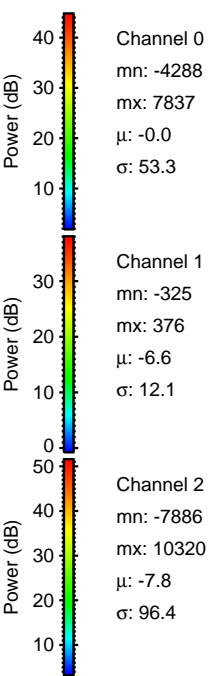
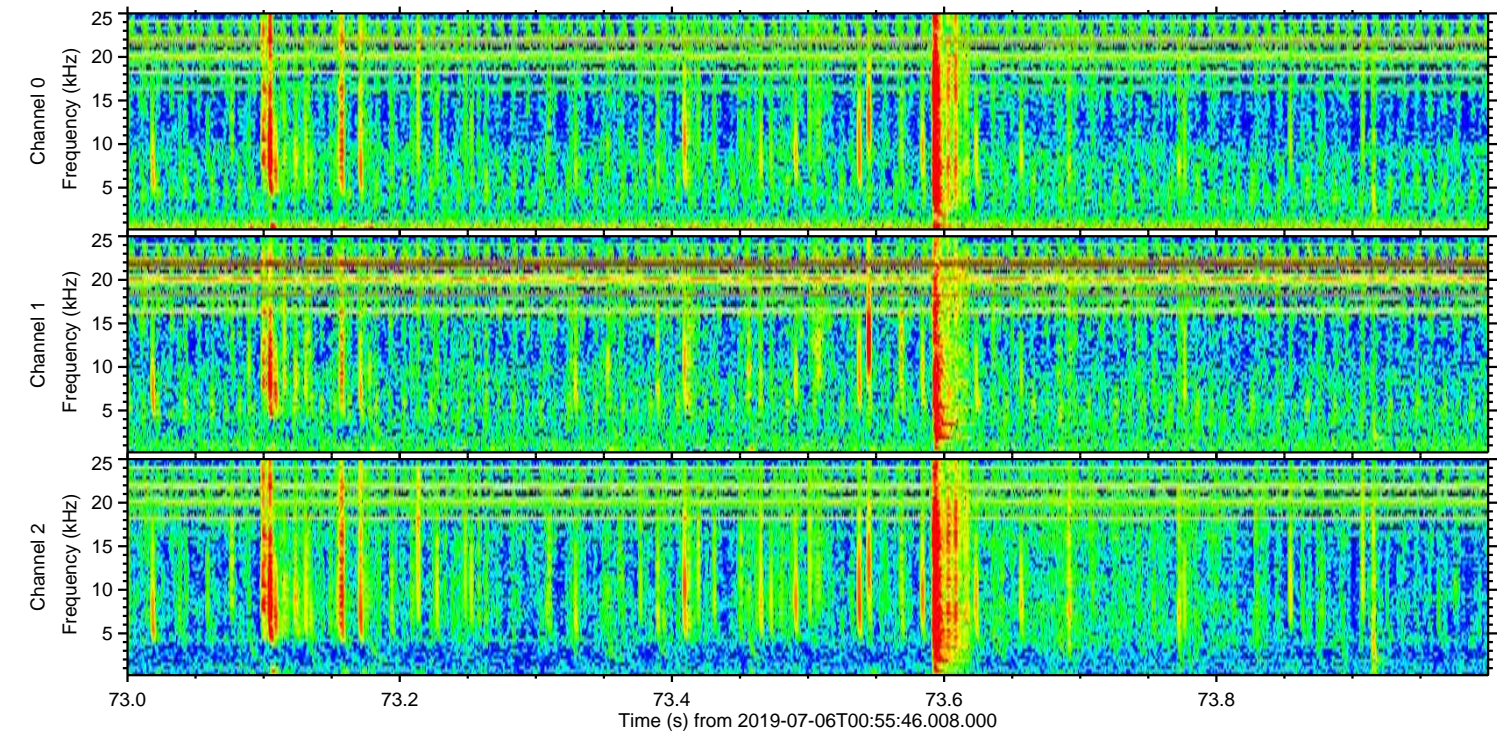
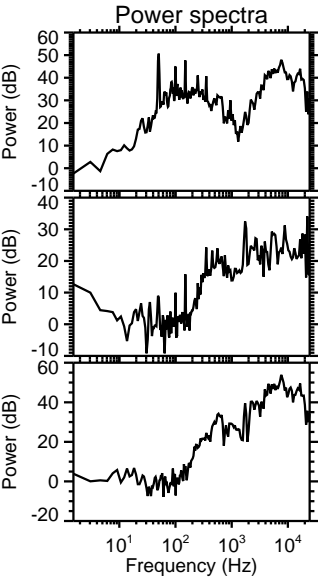
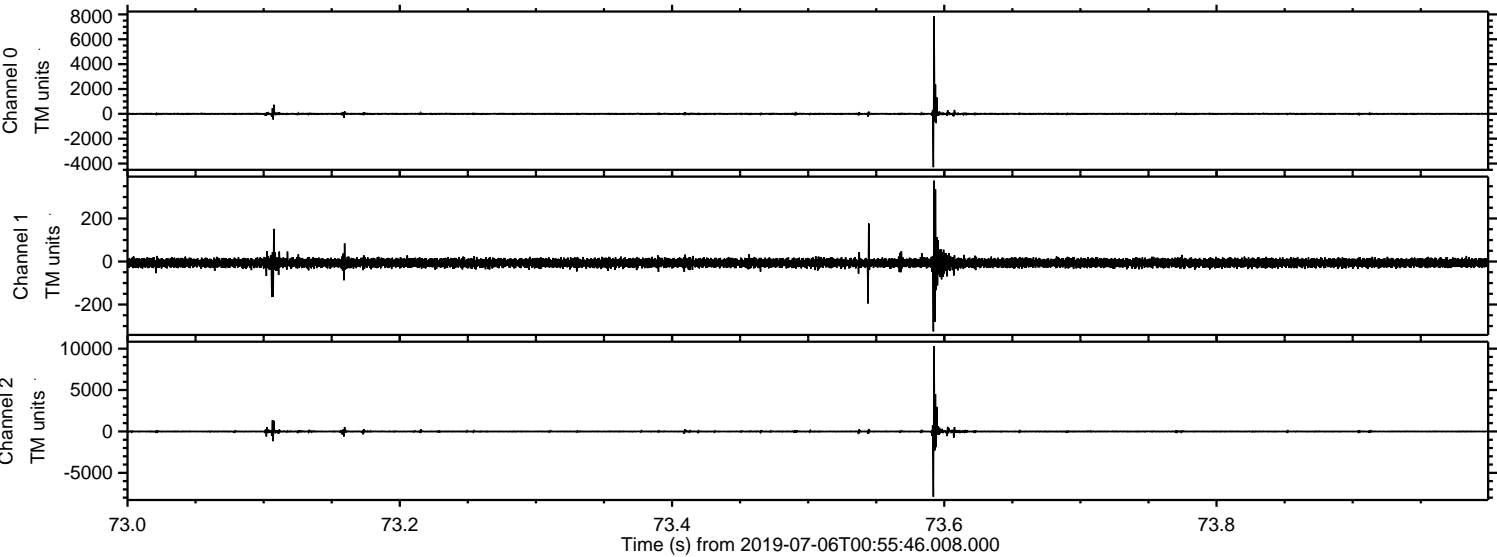


ELMAVAN 3D WAVEFORMS (Measured data sampled at 50 kHz) 51000 packets of 144 samples from 2019-07-06T00:55:46.008.000.

Processed Sat Jul 6 03:03:42 2019 by ELM ver.2012-10-06 from 001__elm20190706_005545__dat00.bin

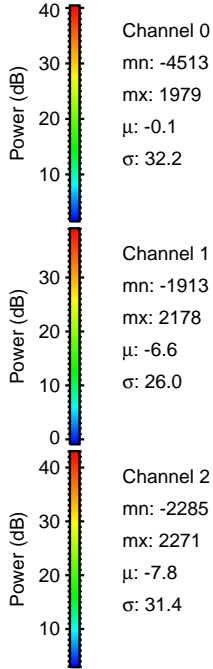
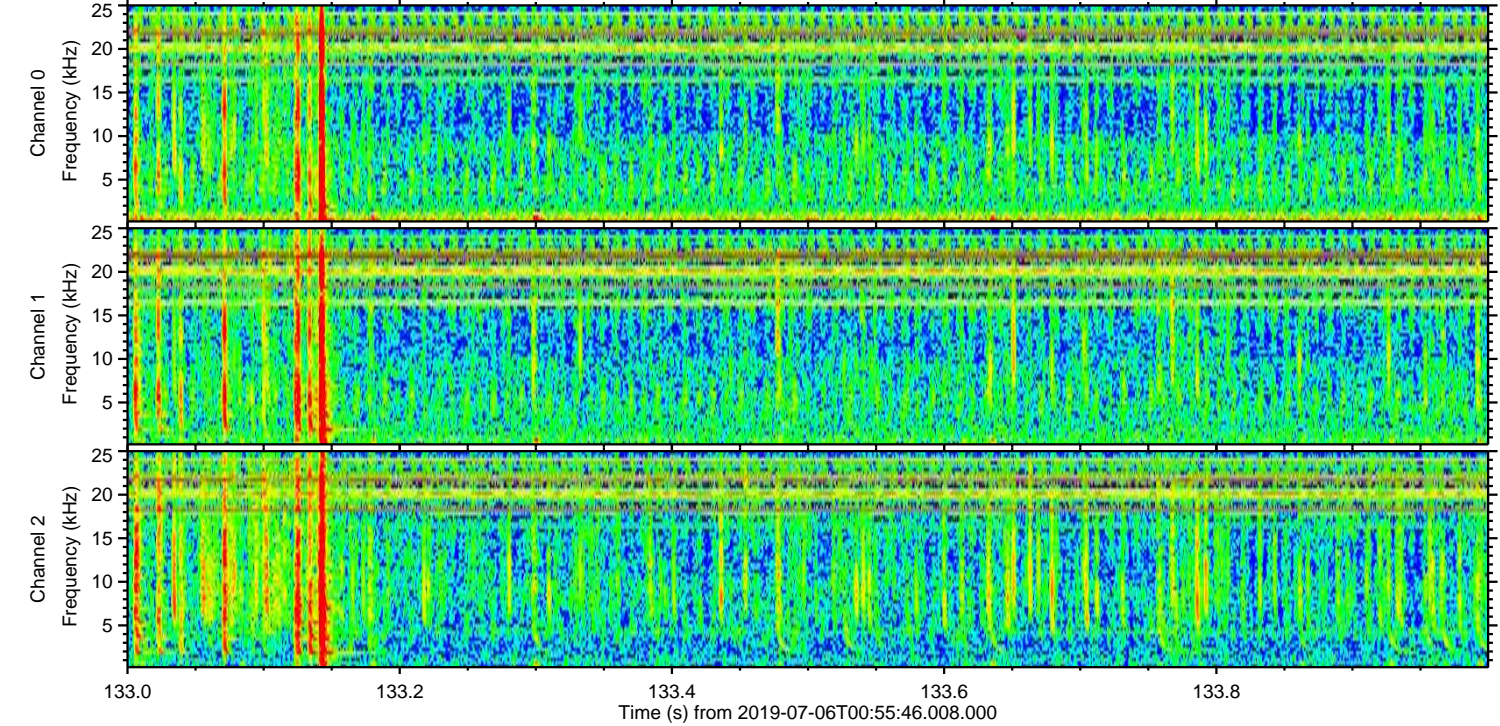
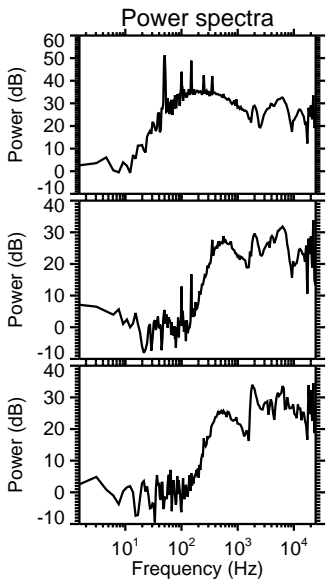
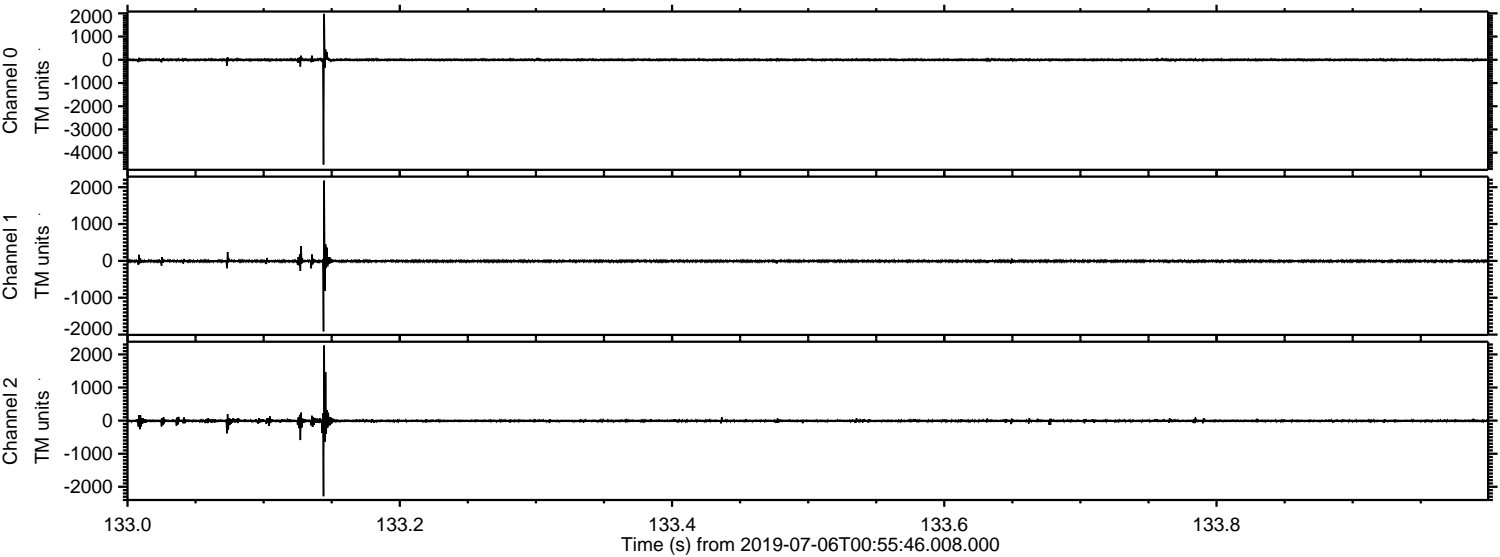


Processed Sat Jul 6 03:03:49 2019 by ELM ver.2012-10-06 from 001__elm20190706_005545__dat00.bin

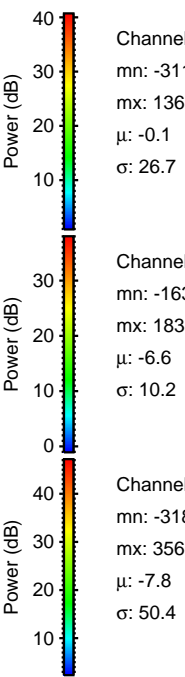
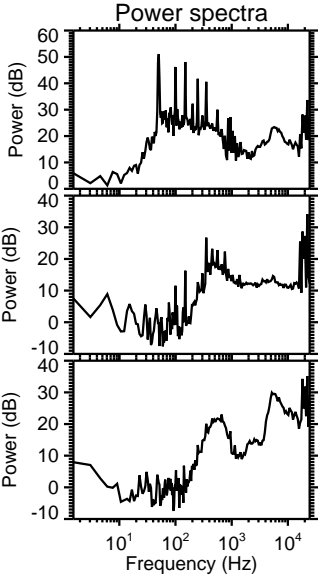
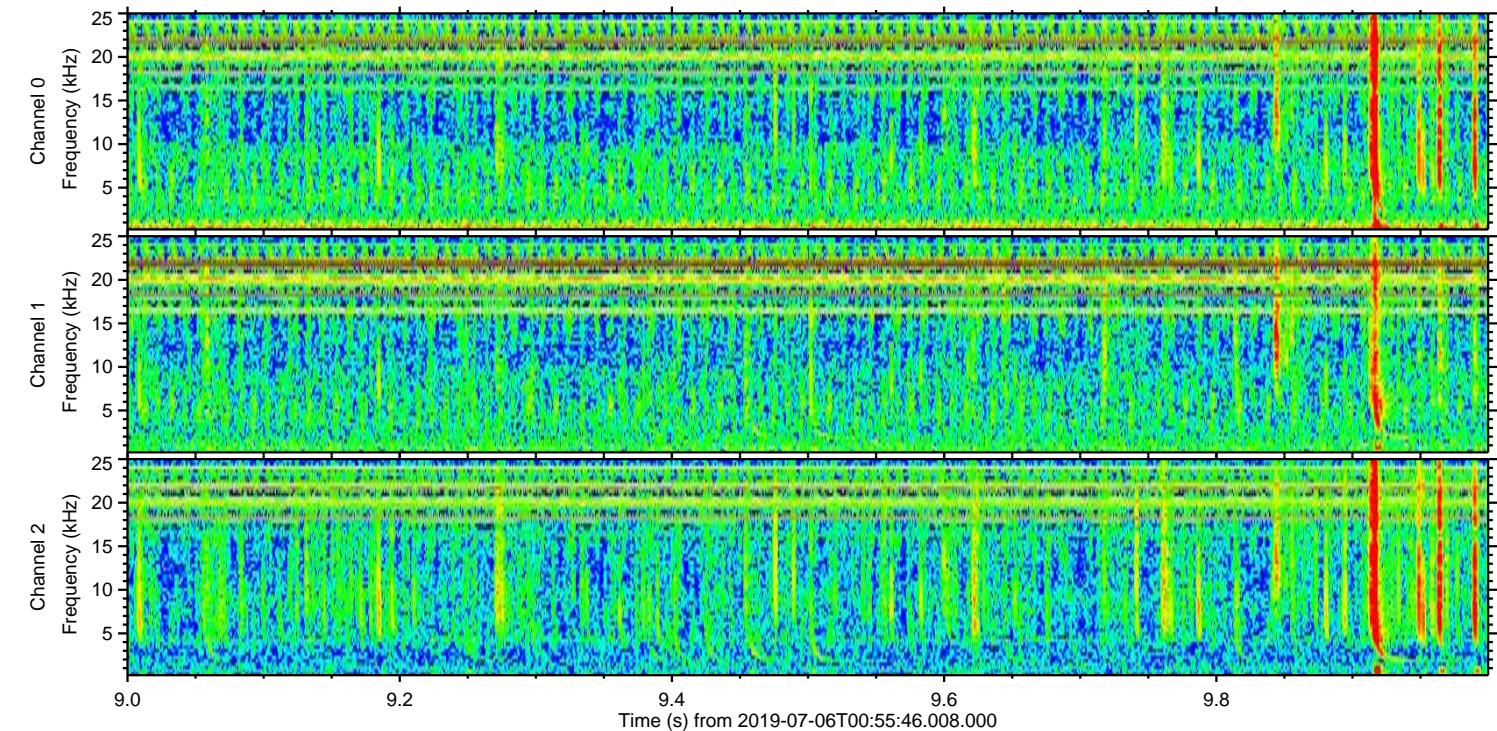
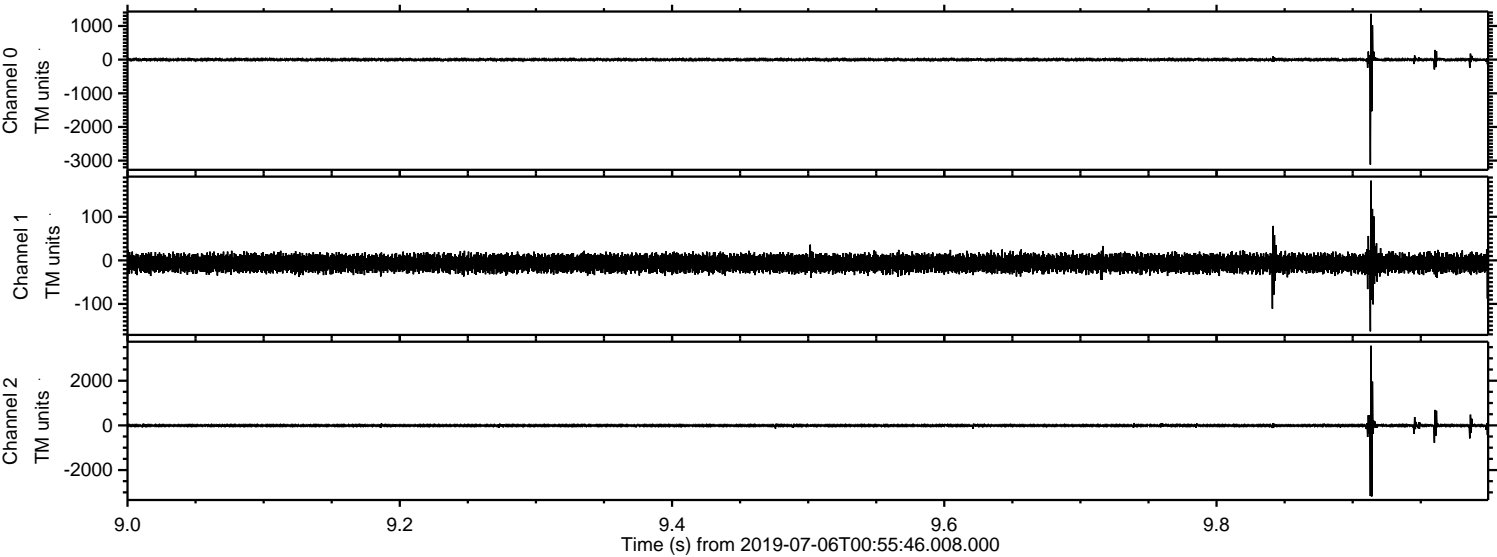


ELMAVAN 3D WAVEFORMS (Measured data sampled at 50 kHz) 51000 packets of 144 samples from 2019-07-06T00:55:46.008.000. Part 134/147

Processed Sat Jul 6 03:03:50 2019 by ELM ver.2012-10-06 from 001__elm20190706_005545__dat00.bin



Processed Sat Jul 6 03:03:51 2019 by ELM ver.2012-10-06 from 001__elm20190706_005545__dat00.bin



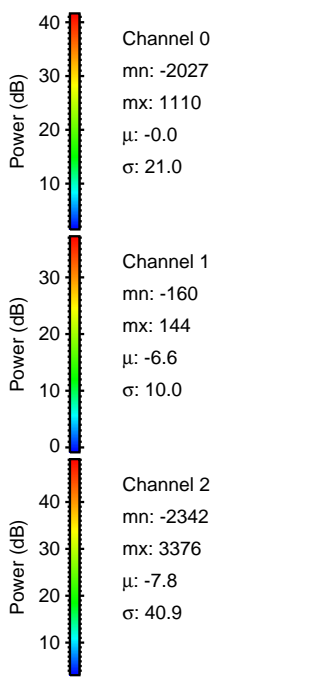
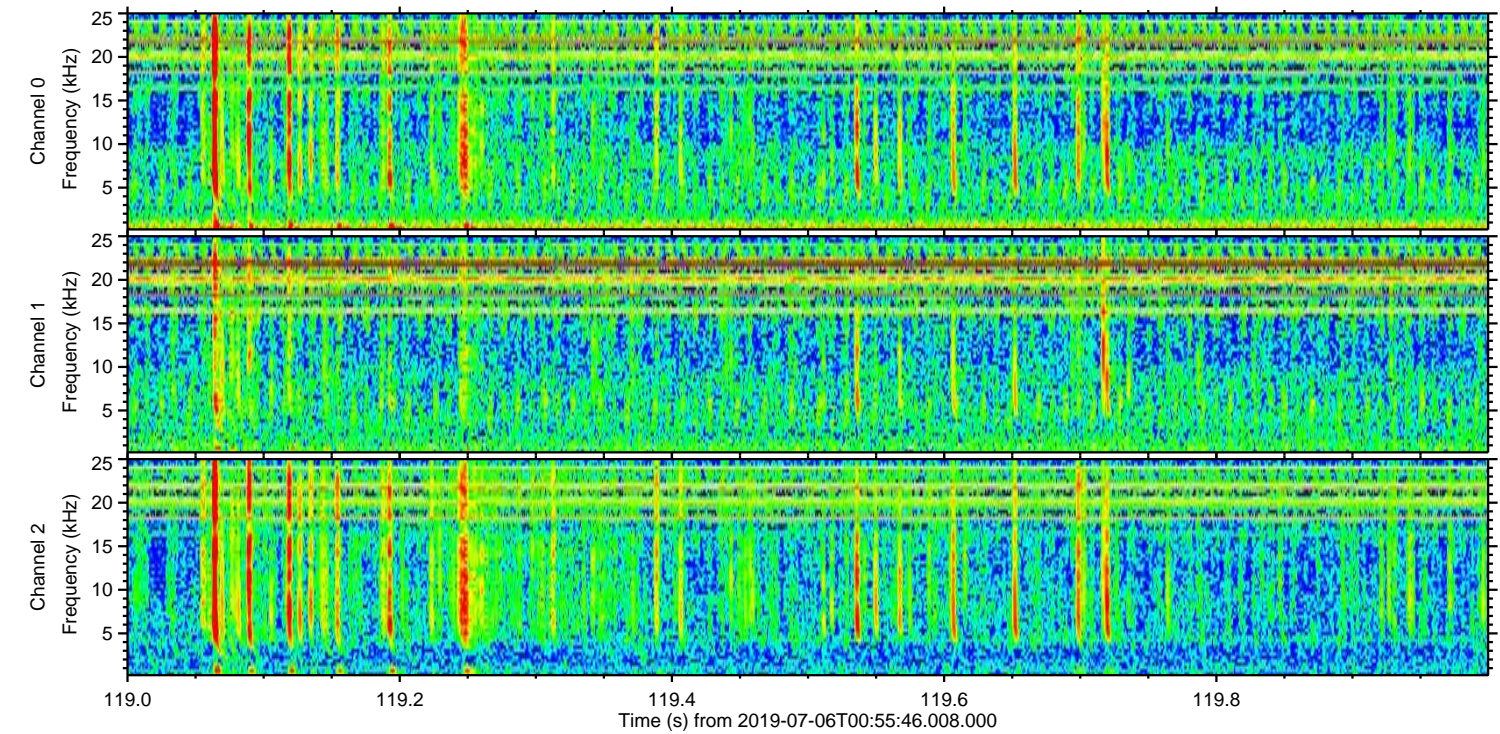
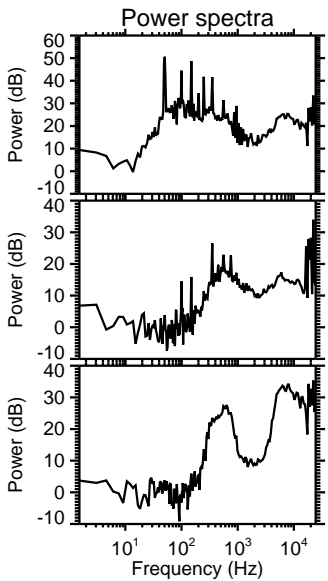
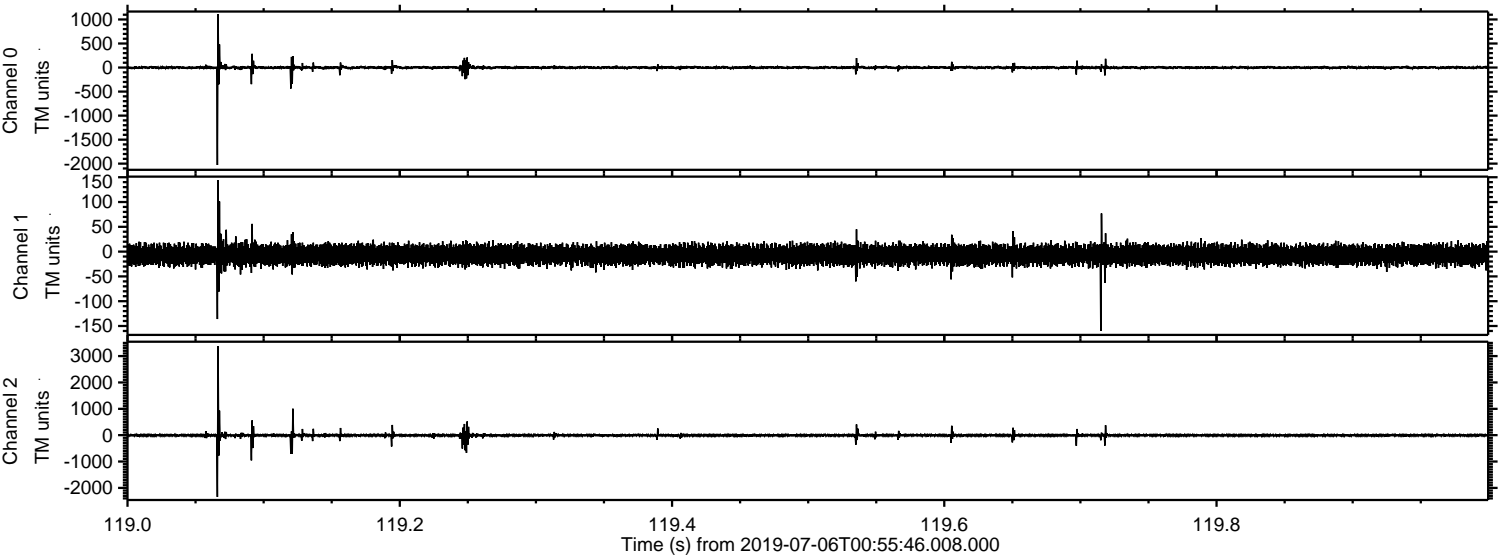
Channel 0
mn: -3118
mx: 1361
 μ : -0.1
 σ : 26.7

Channel 1
mn: -163
mx: 183
 μ : -6.6
 σ : 10.2

Channel 2
mn: -3182
mx: 3566
 μ : -7.8
 σ : 50.4

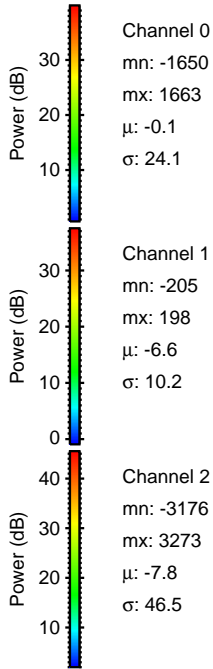
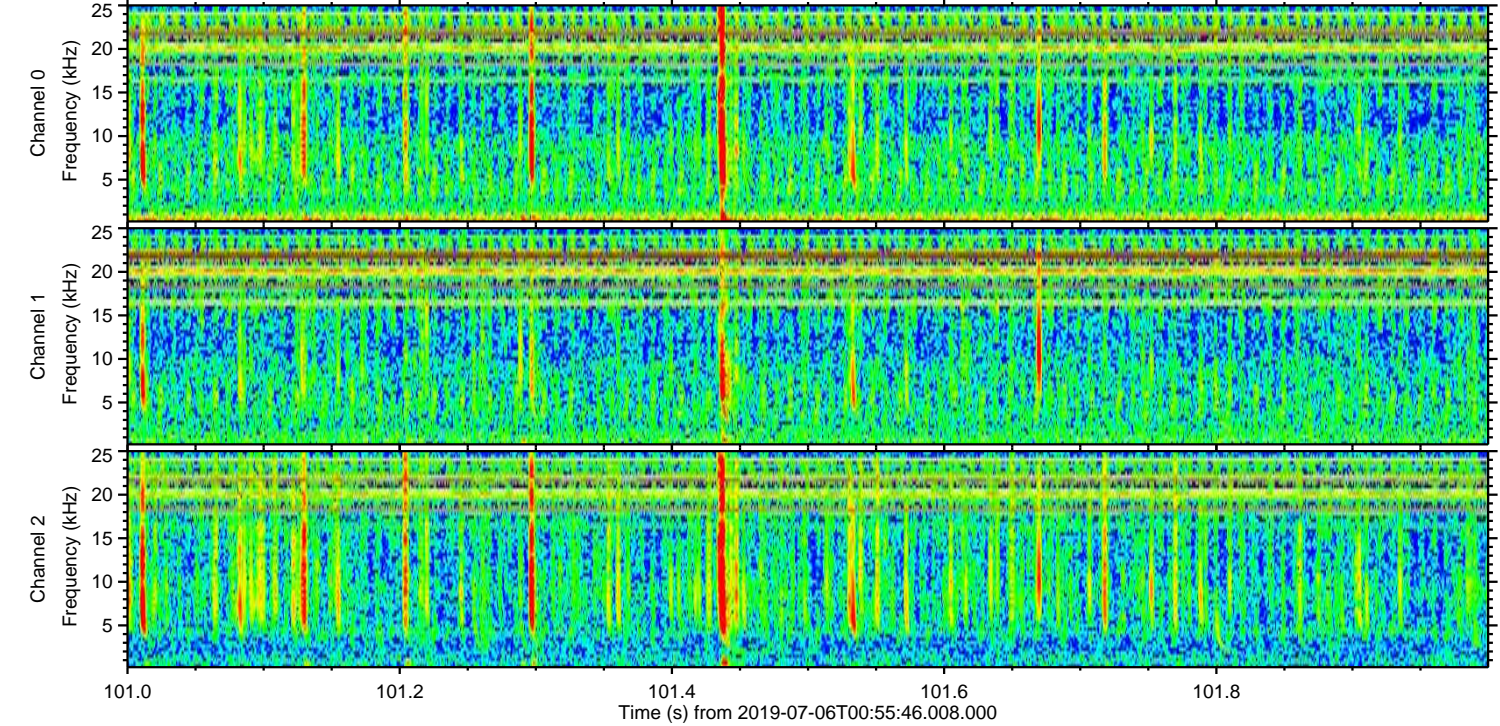
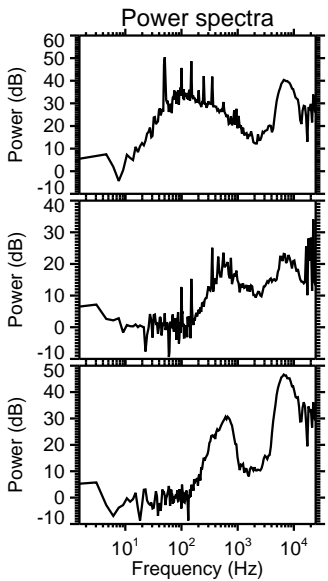
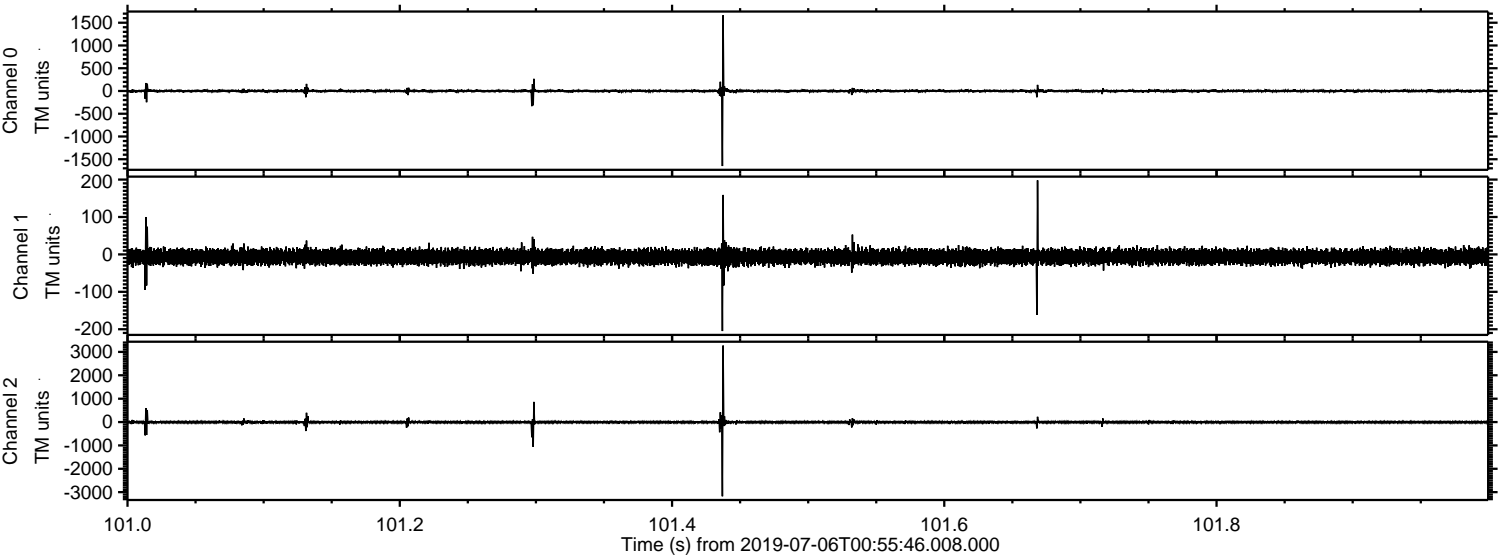
ELMAVAN 3D WAVEFORMS (Measured data sampled at 50 kHz) 51000 packets of 144 samples from 2019-07-06T00:55:46.008.000. Part 120/147

Processed Sat Jul 6 03:03:52 2019 by ELM ver.2012-10-06 from 001__elm20190706_005545__dat00.bin



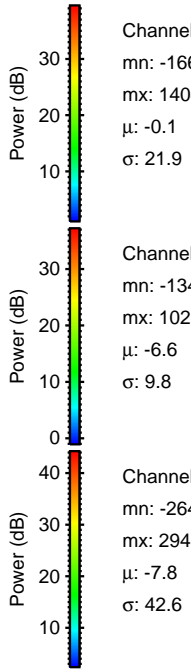
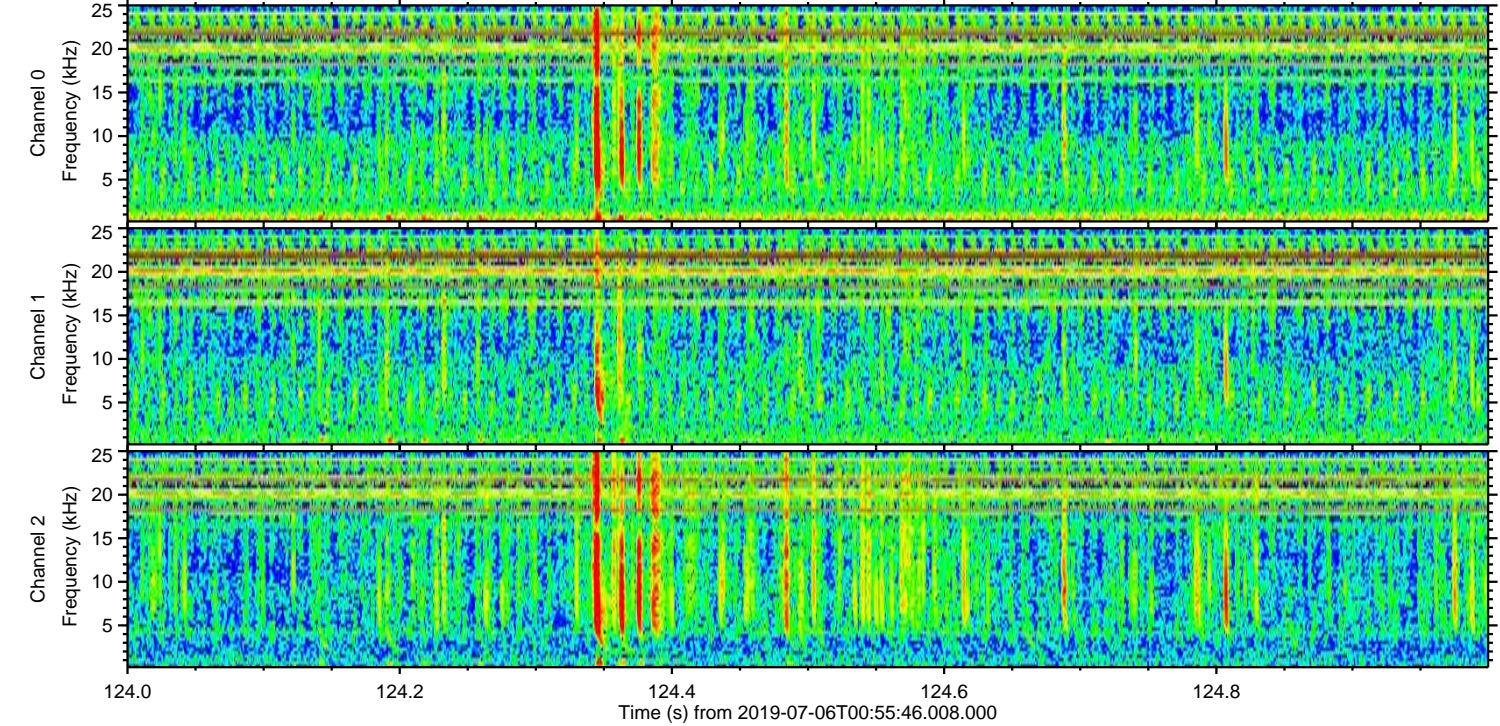
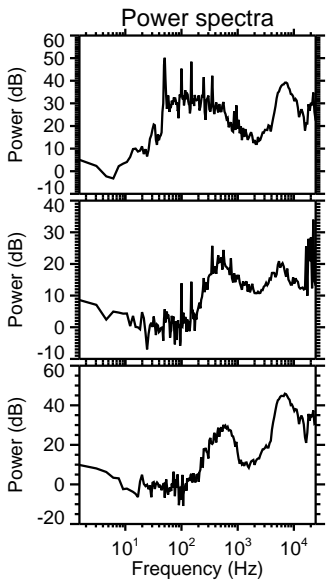
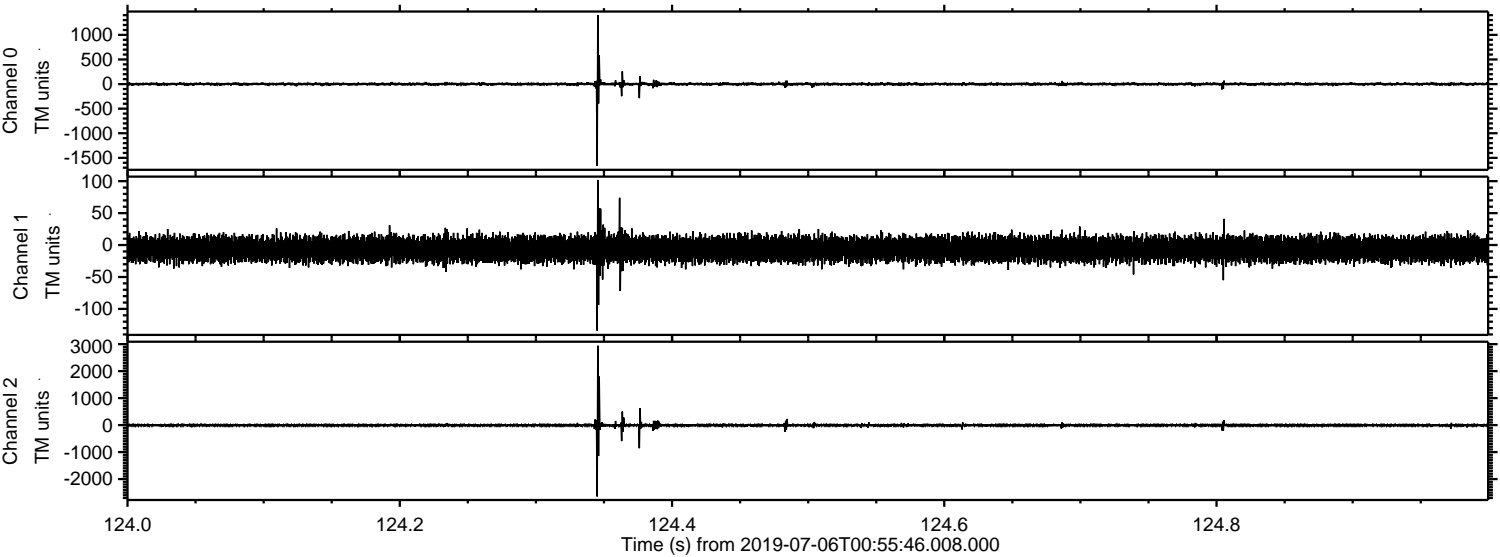
ELMAVAN 3D WAVEFORMS (Measured data sampled at 50 kHz) 51000 packets of 144 samples from 2019-07-06T00:55:46.008.000. Part 102/147

Processed Sat Jul 6 03:03:53 2019 by ELM ver.2012-10-06 from 001__elm20190706_005545__dat00.bin

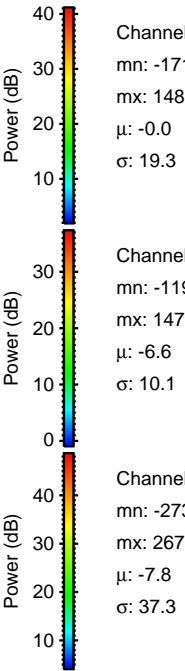
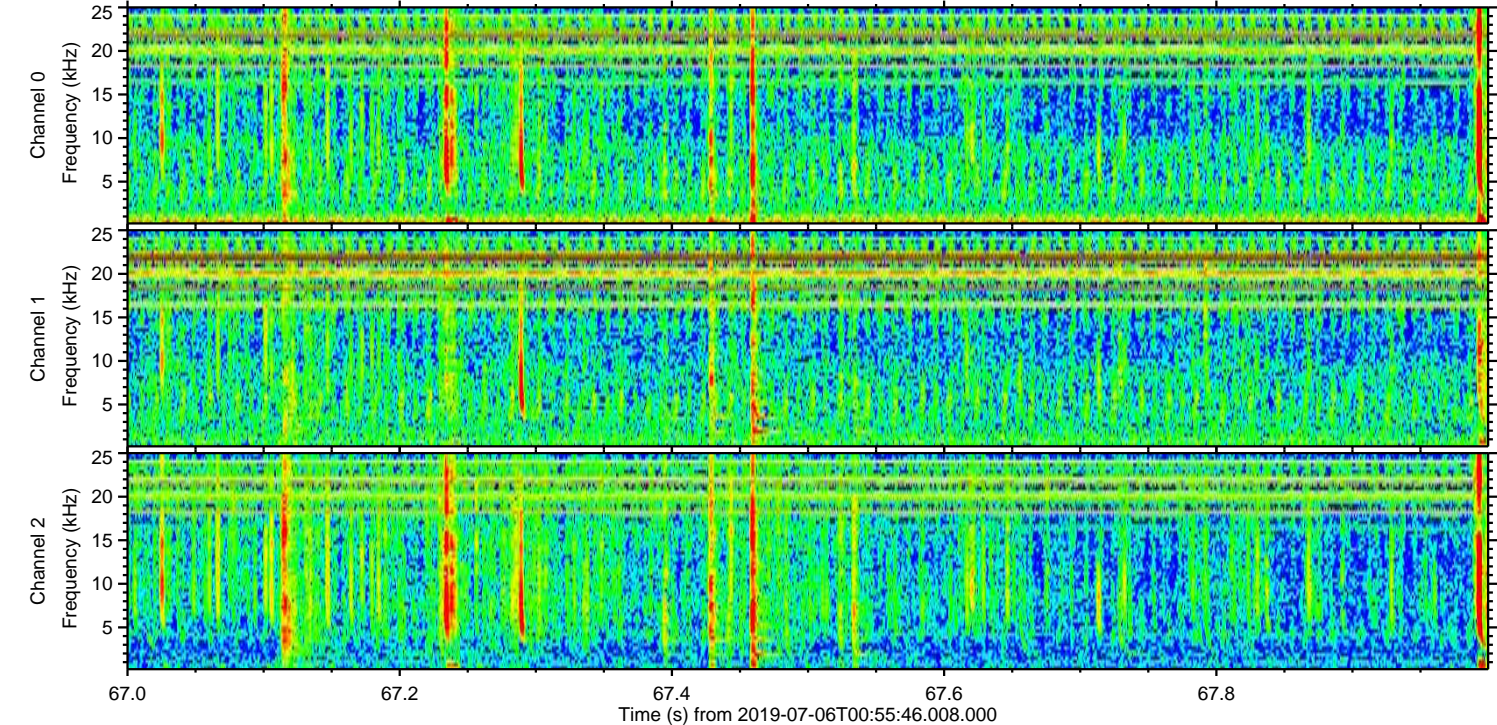
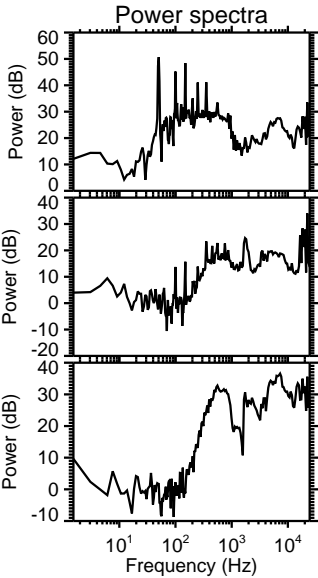
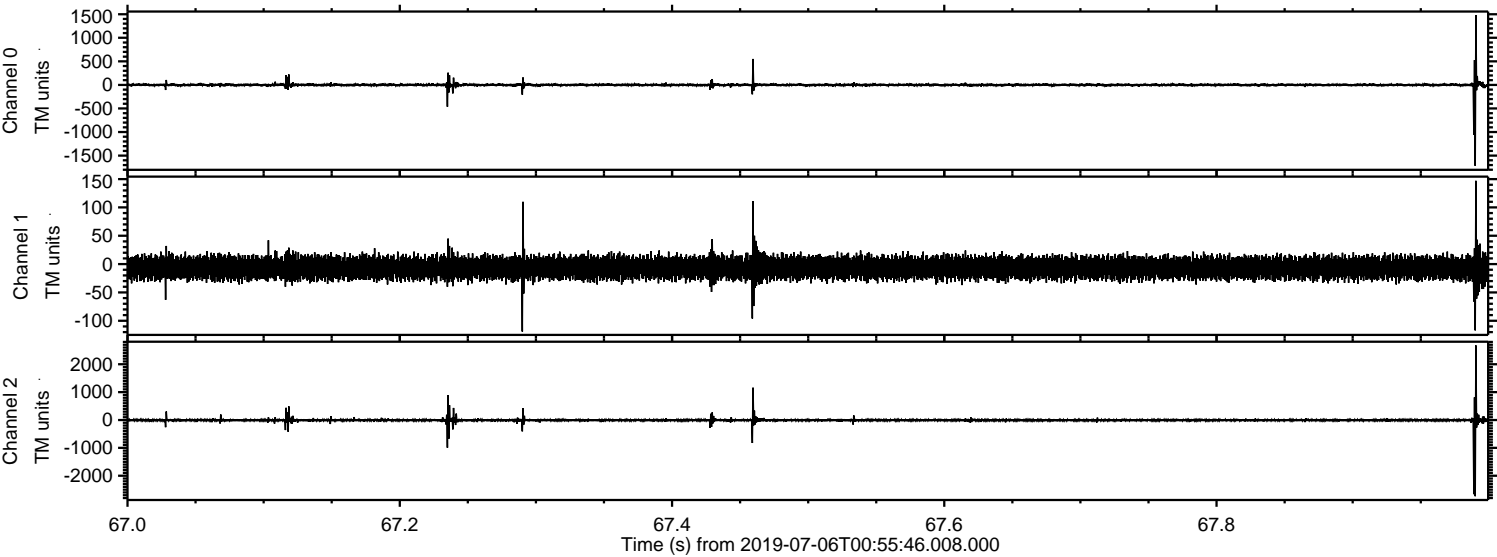


ELMAVAN 3D WAVEFORMS (Measured data sampled at 50 kHz) 51000 packets of 144 samples from 2019-07-06T00:55:46.008.000. Part 125/147

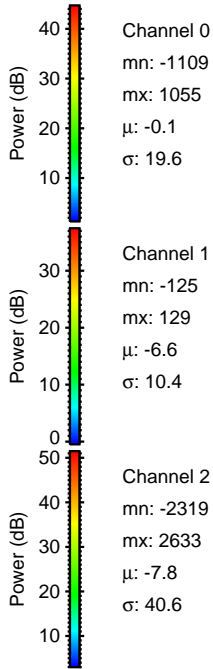
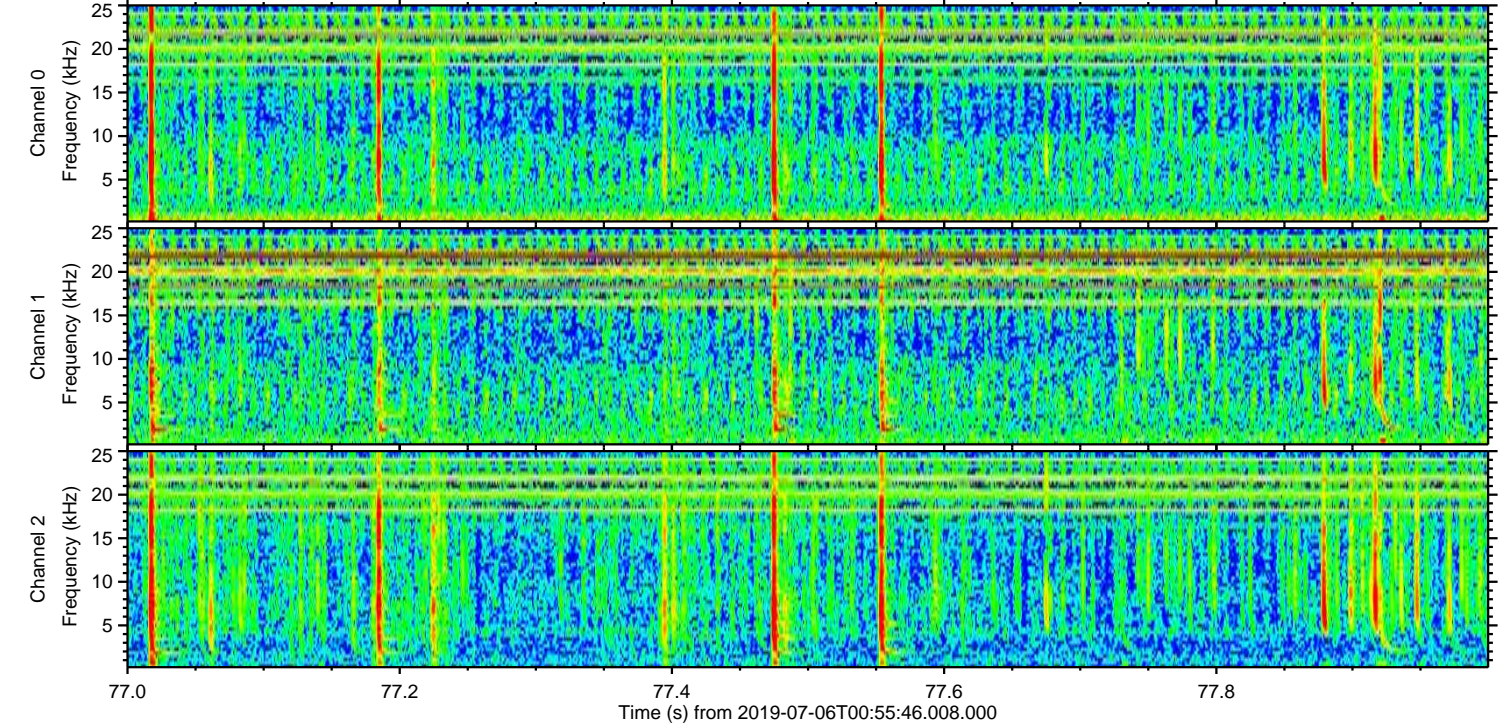
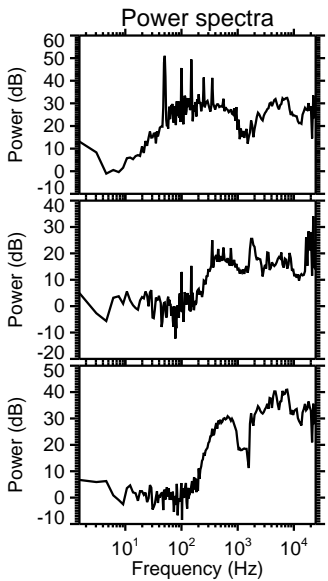
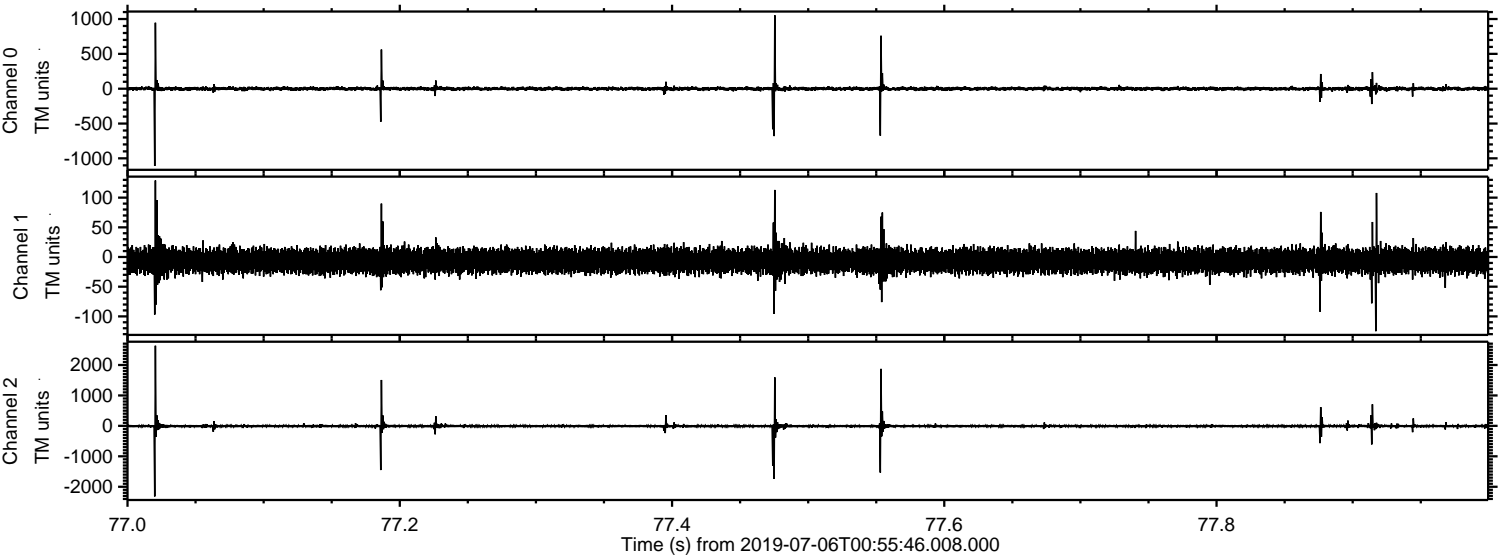
Processed Sat Jul 6 03:03:53 2019 by ELM ver.2012-10-06 from 001__elm20190706_005545__dat00.bin



Processed Sat Jul 6 03:03:54 2019 by ELM ver.2012-10-06 from 001__elm20190706_005545__dat00.bin



Processed Sat Jul 6 03:03:55 2019 by ELM ver.2012-10-06 from 001__elm20190706_005545__dat00.bin



Processed Sat Jul 6 03:03:56 2019 by ELM ver.2012-10-06 from 001__elm20190706_005545__dat00.bin

