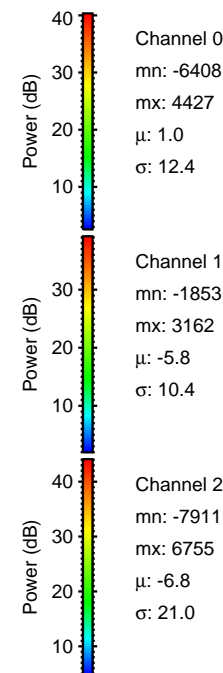
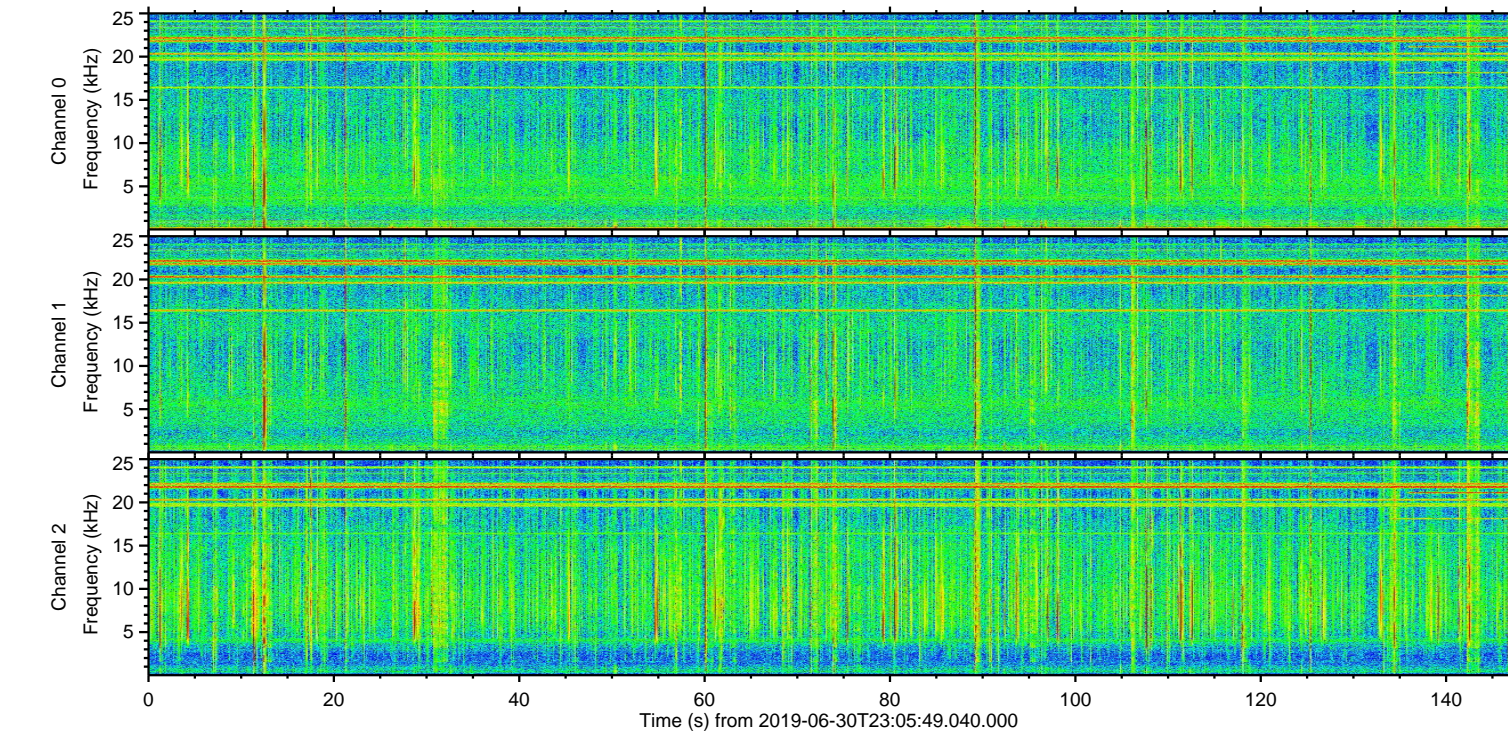
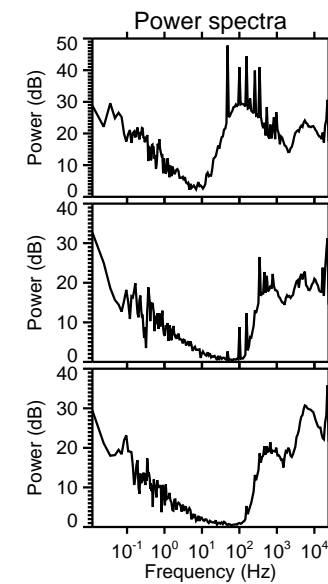
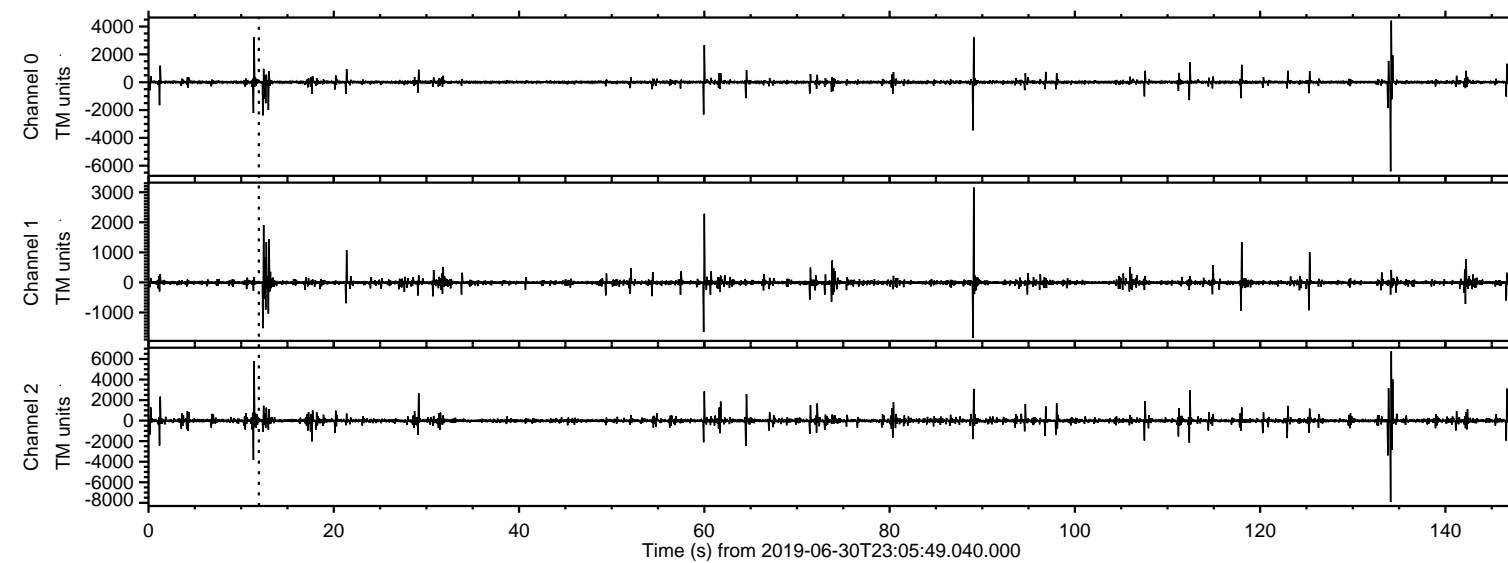


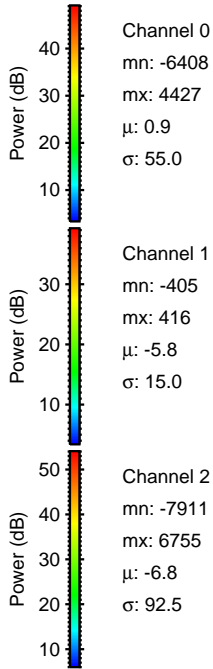
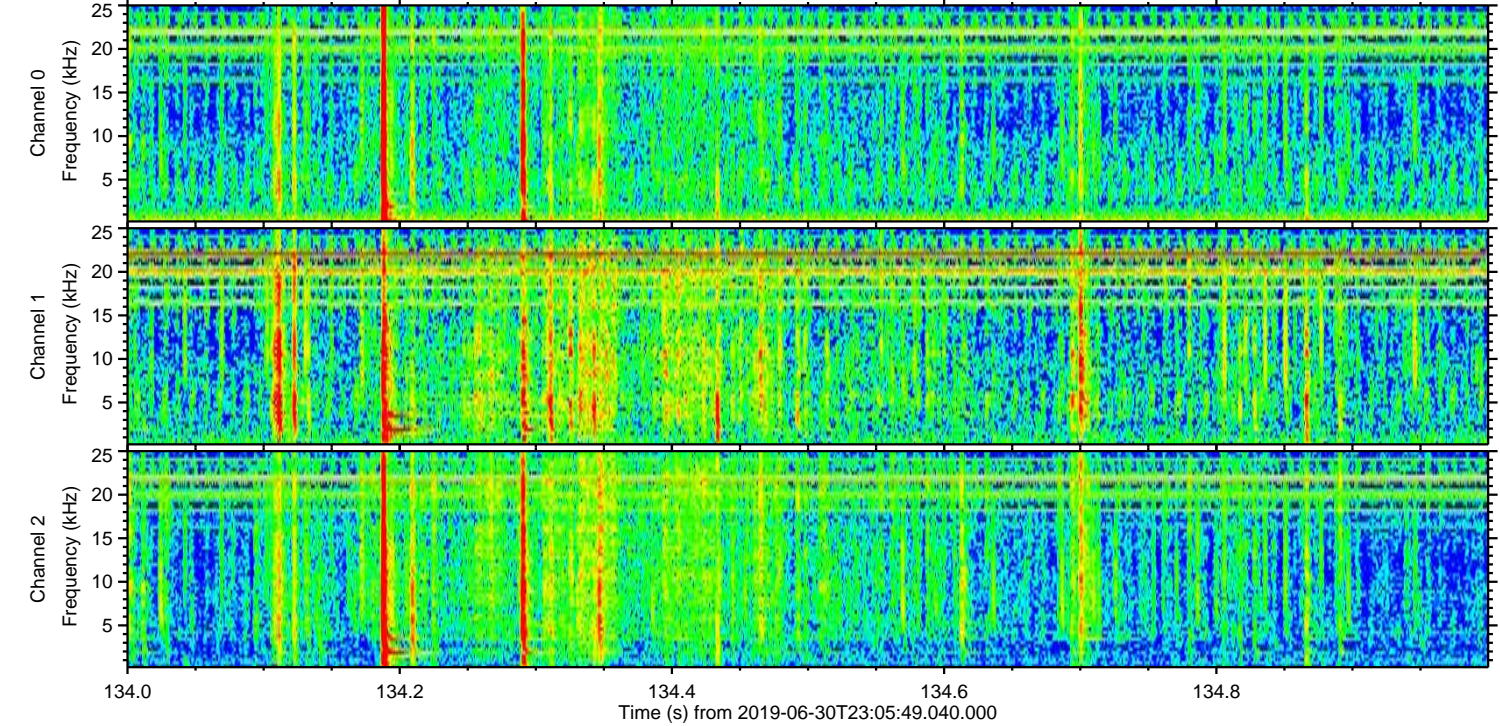
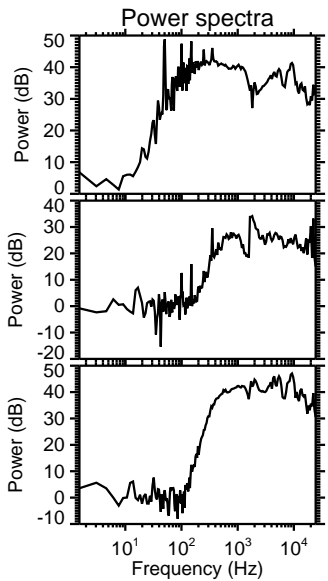
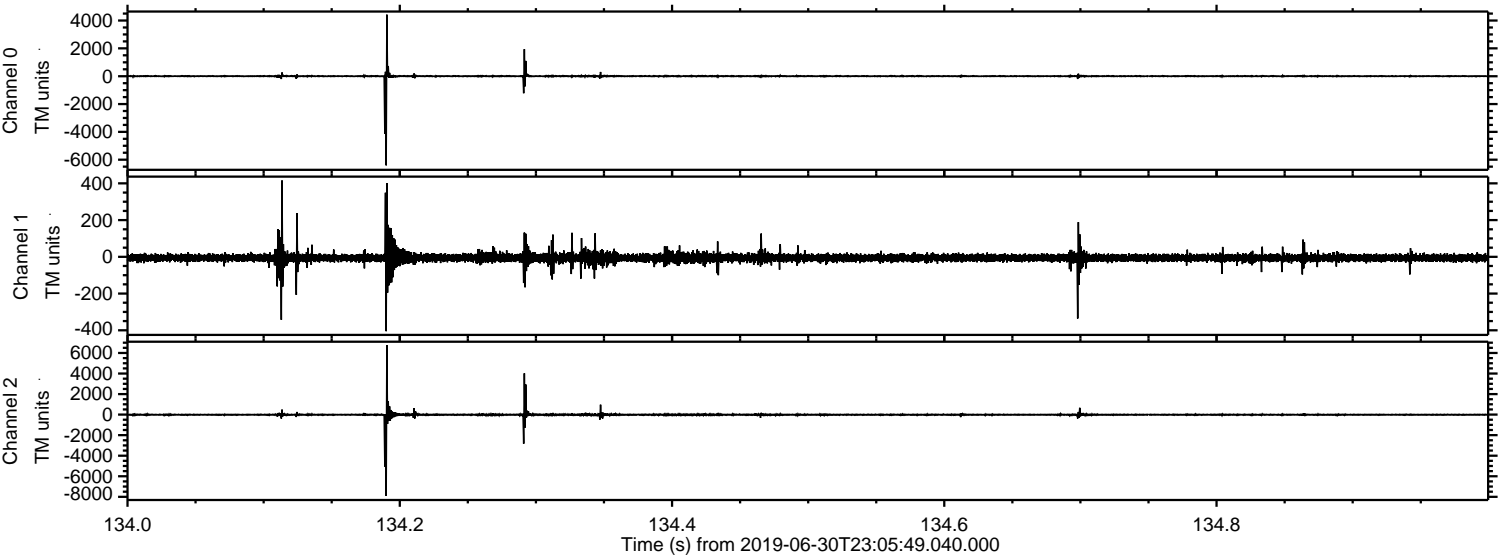
ELMAVAN 3D WAVEFORMS (Measured data sampled at 50 kHz) 50999 packets of 144 samples from 2019-06-30T23:05:49.040.000.

Processed Mon Jul 1 01:13:27 2019 by ELM ver.2012-10-06 from 001__elm20190630_230548__dat00.bin

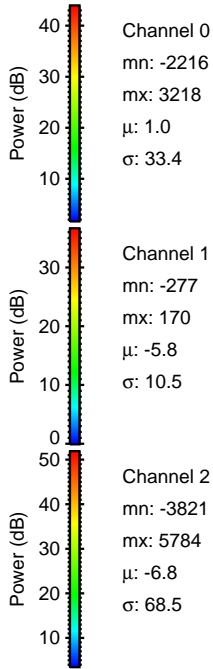
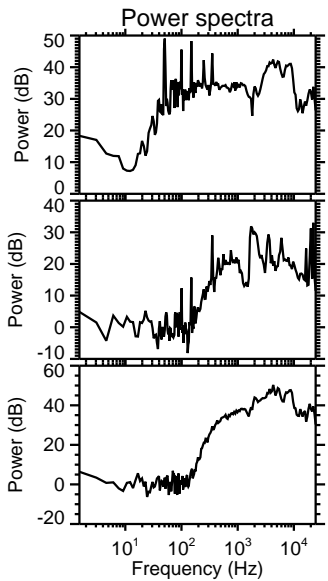
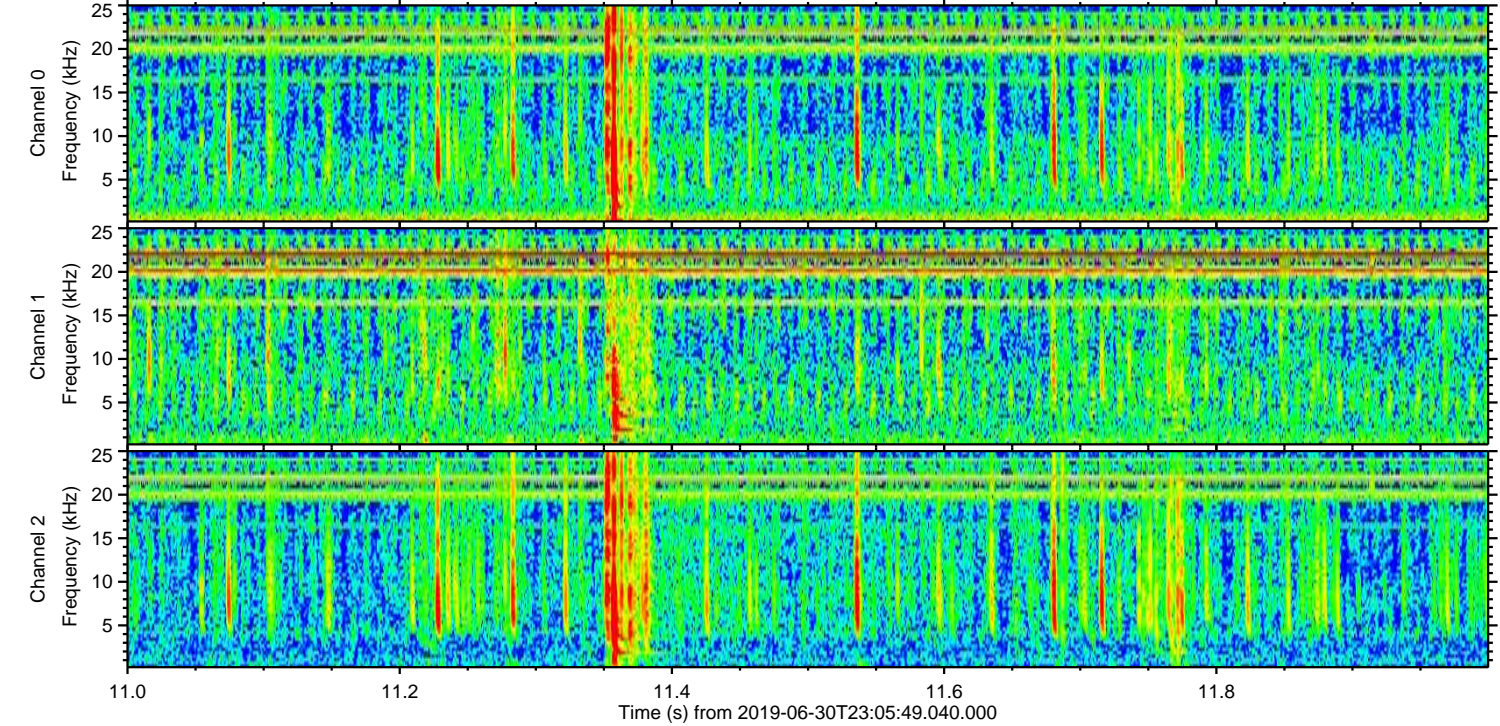
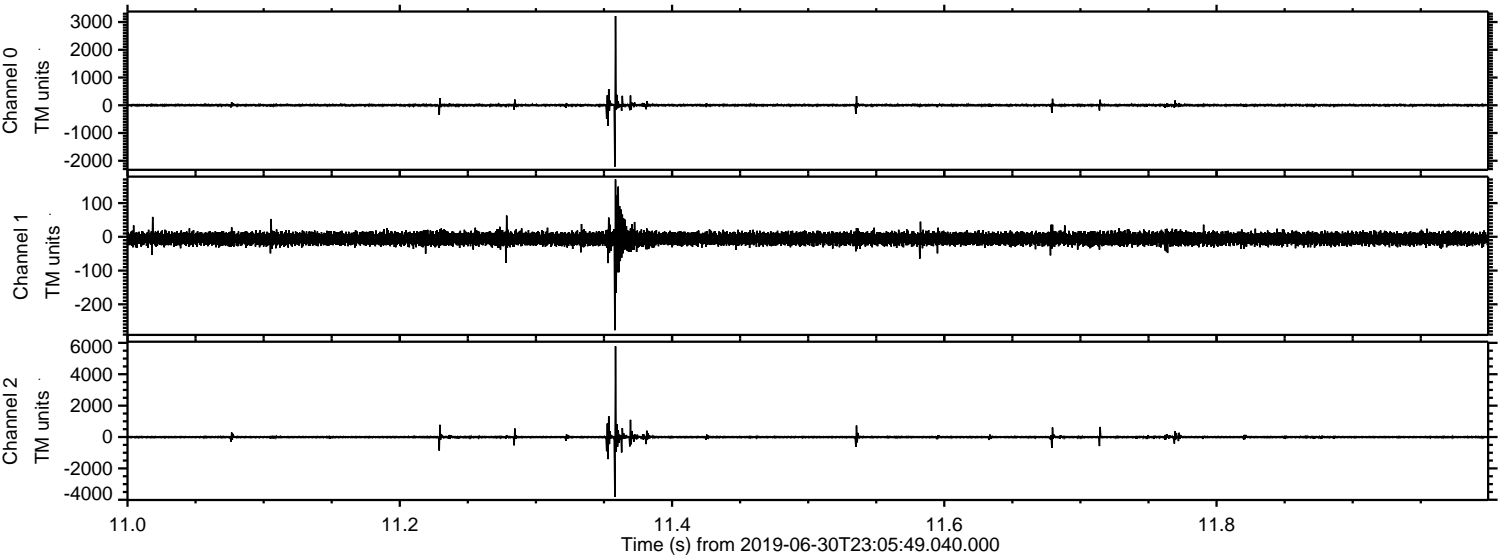


ELMAVAN 3D WAVEFORMS (Measured data sampled at 50 kHz) 50999 packets of 144 samples from 2019-06-30T23:05:49.040.000. Part 135/147

Processed Mon Jul 1 01:13:35 2019 by ELM ver.2012-10-06 from 001__elm20190630_230548__dat00.bin



Processed Mon Jul 1 01:13:35 2019 by ELM ver.2012-10-06 from 001__elm20190630_230548__dat00.bin

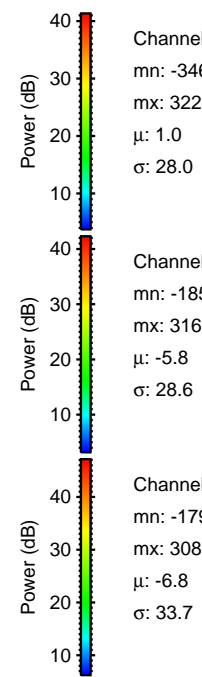
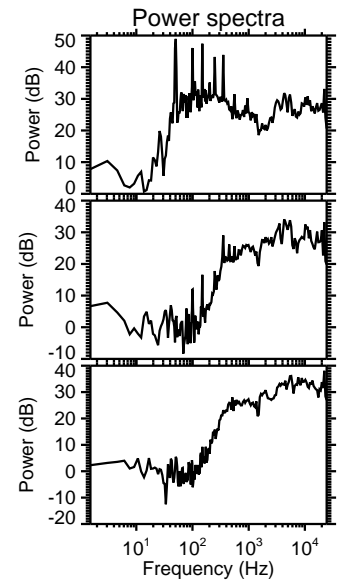
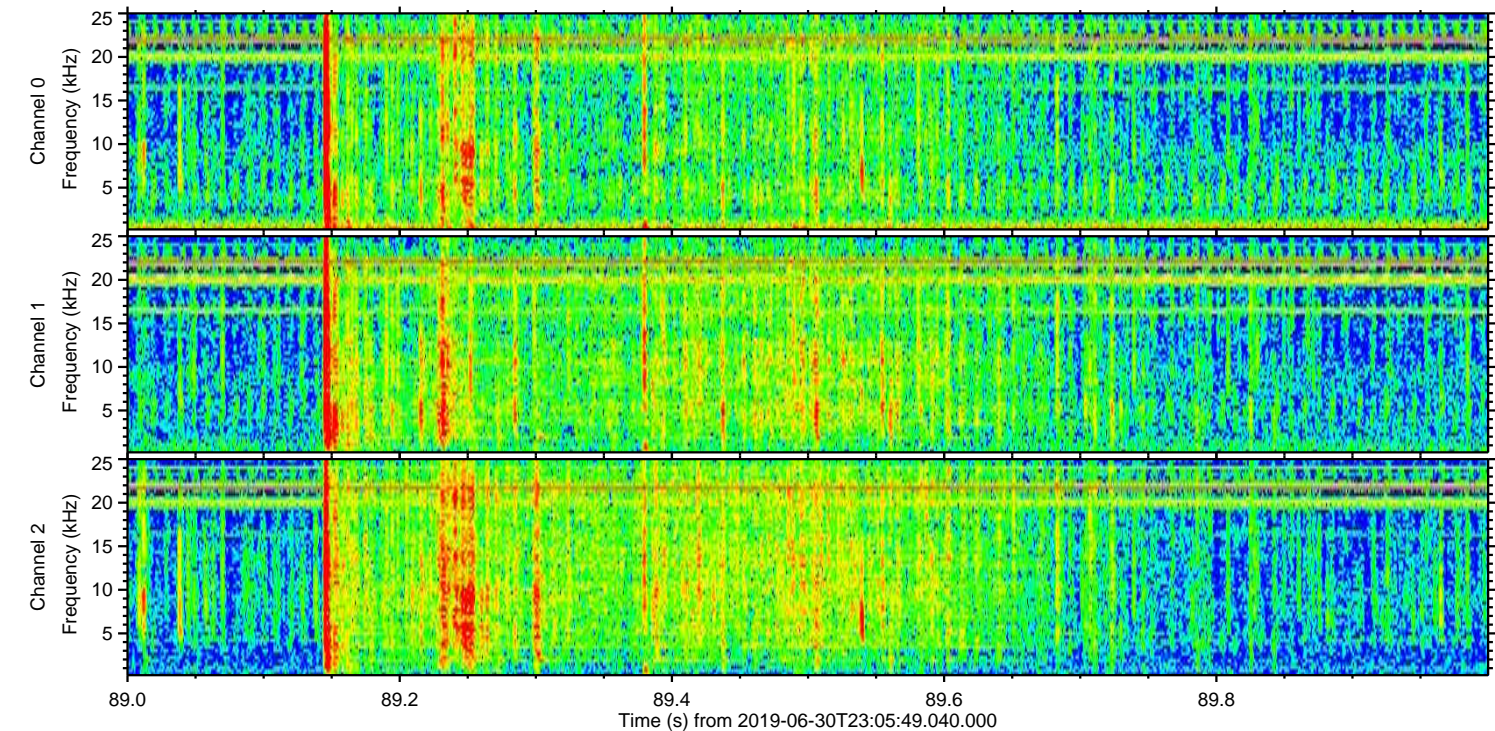
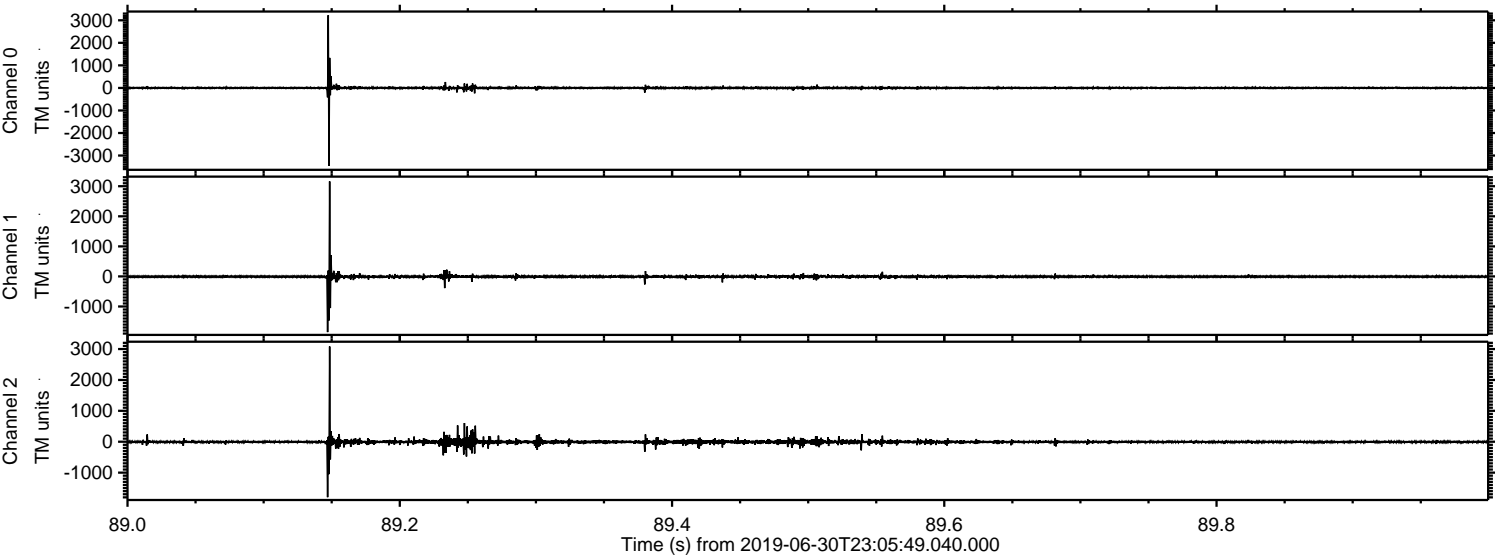


Channel 0
mn: -2216
mx: 3218
 μ : 1.0
 σ : 33.4

Channel 1
mn: -277
mx: 170
 μ : -5.8
 σ : 10.5

Channel 2
mn: -3821
mx: 5784
 μ : -6.8
 σ : 68.5

Processed Mon Jul 1 01:13:36 2019 by ELM ver.2012-10-06 from 001__elm20190630_230548__dat00.bin



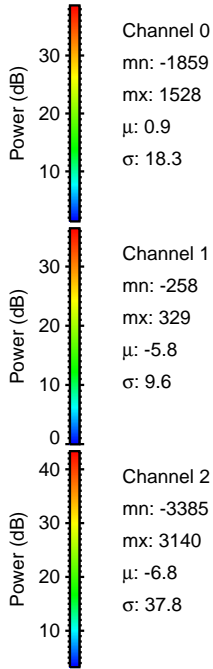
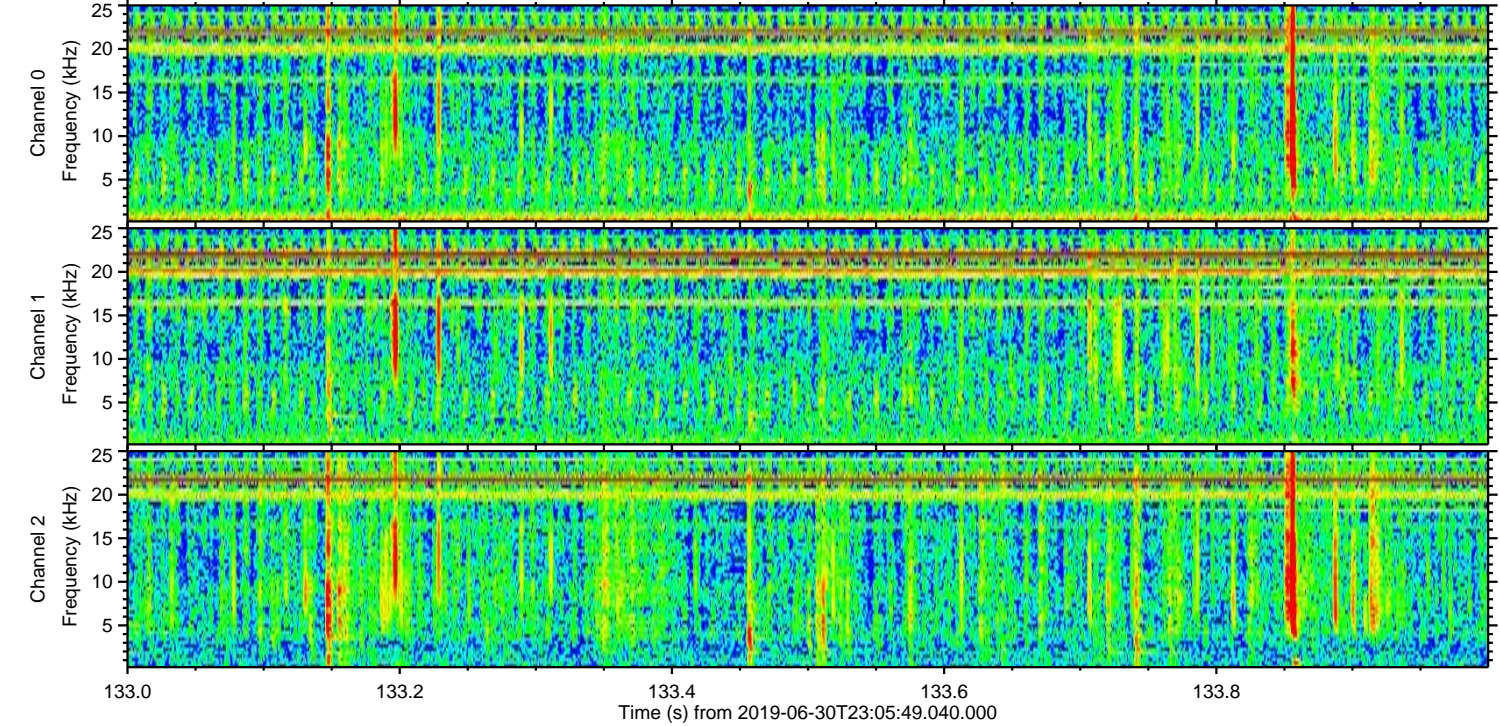
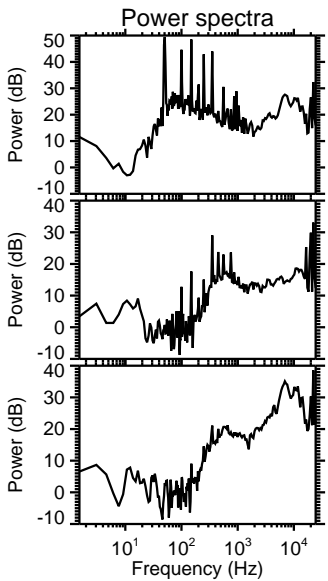
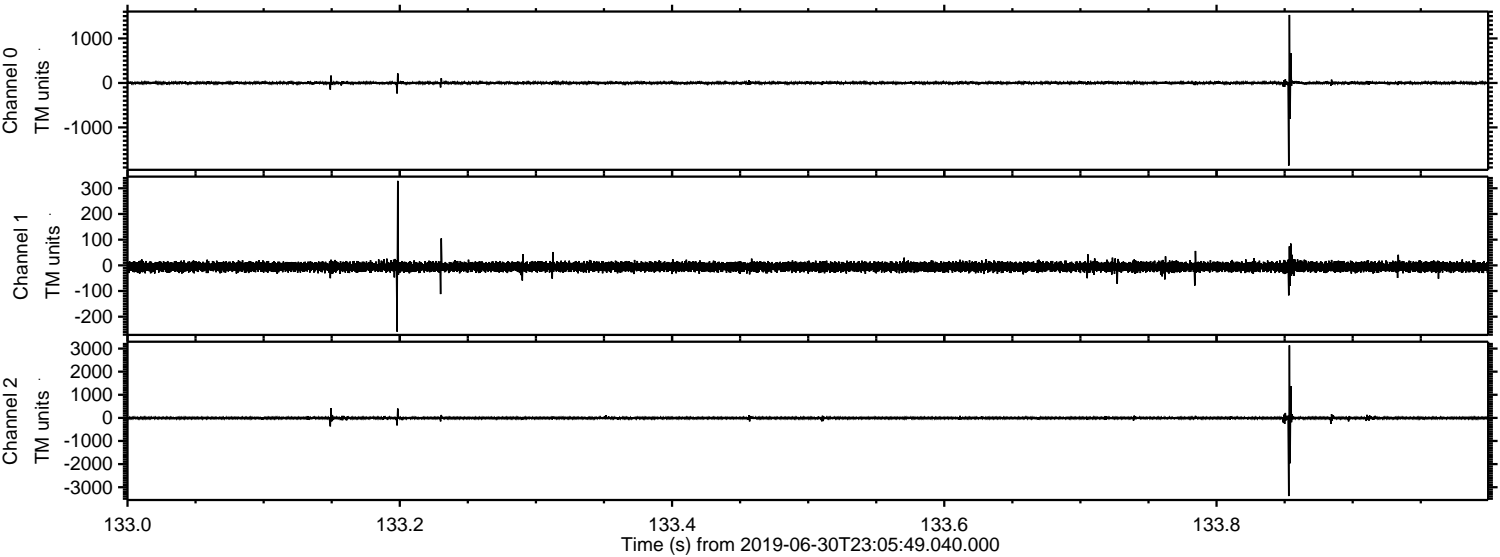
Channel 0
mn: -3462
mx: 3229
 μ : 1.0
 σ : 28.0

Channel 1
mn: -1853
mx: 3162
 μ : -5.8
 σ : 28.6

Channel 2
mn: -1797
mx: 3083
 μ : -6.8
 σ : 33.7

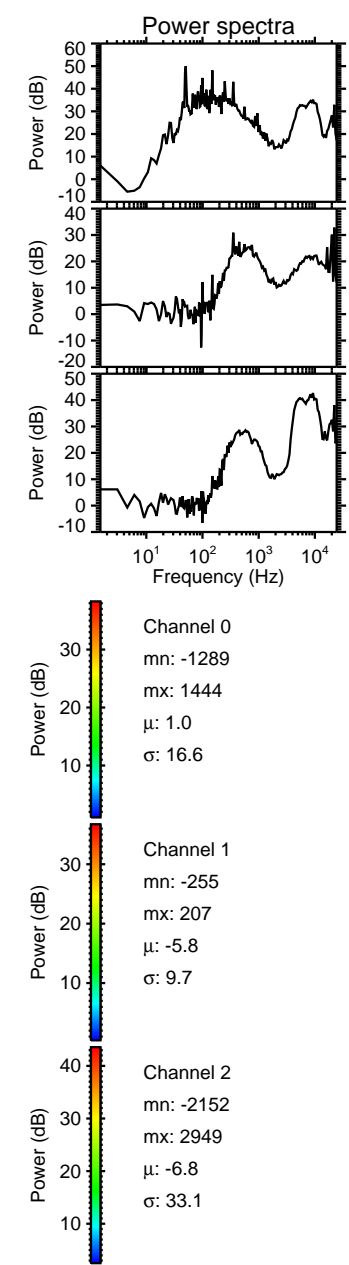
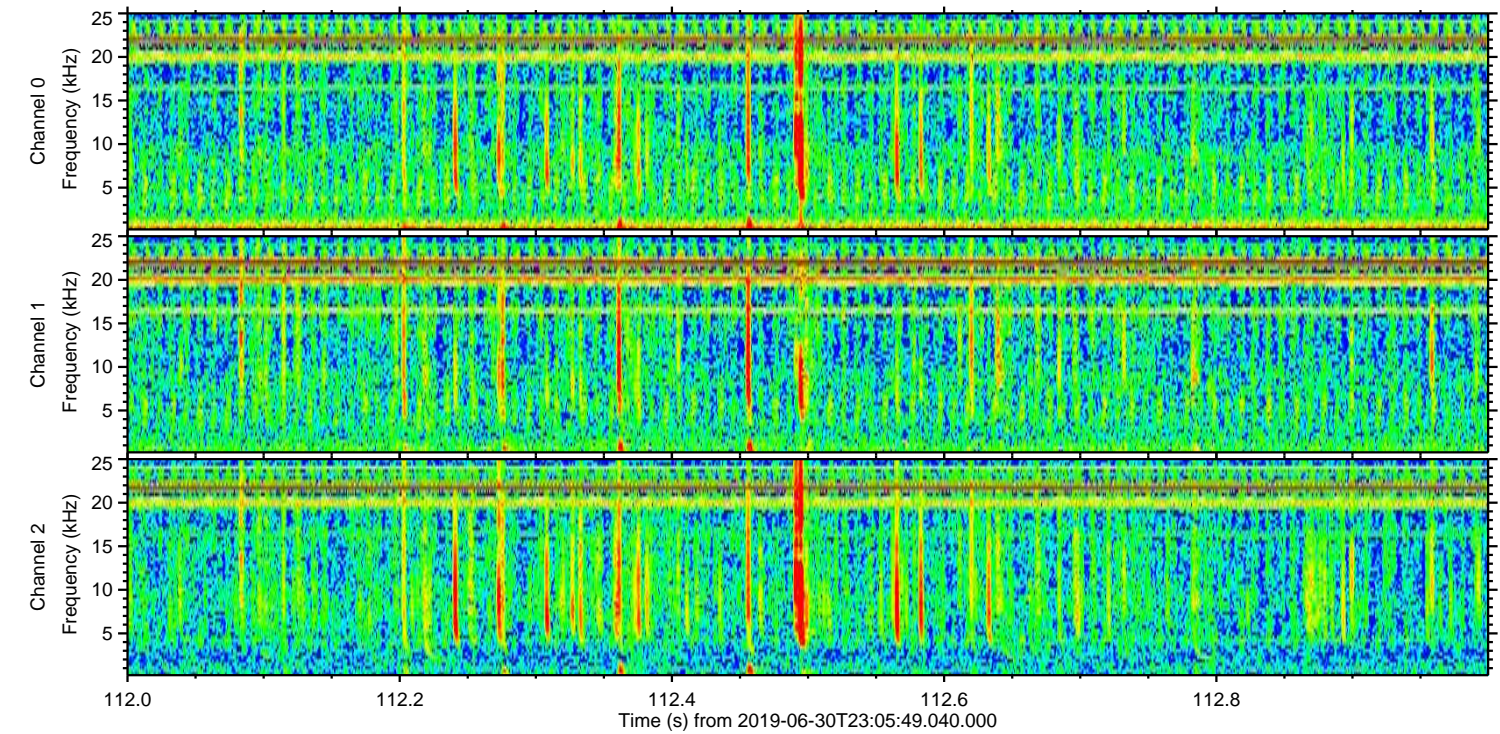
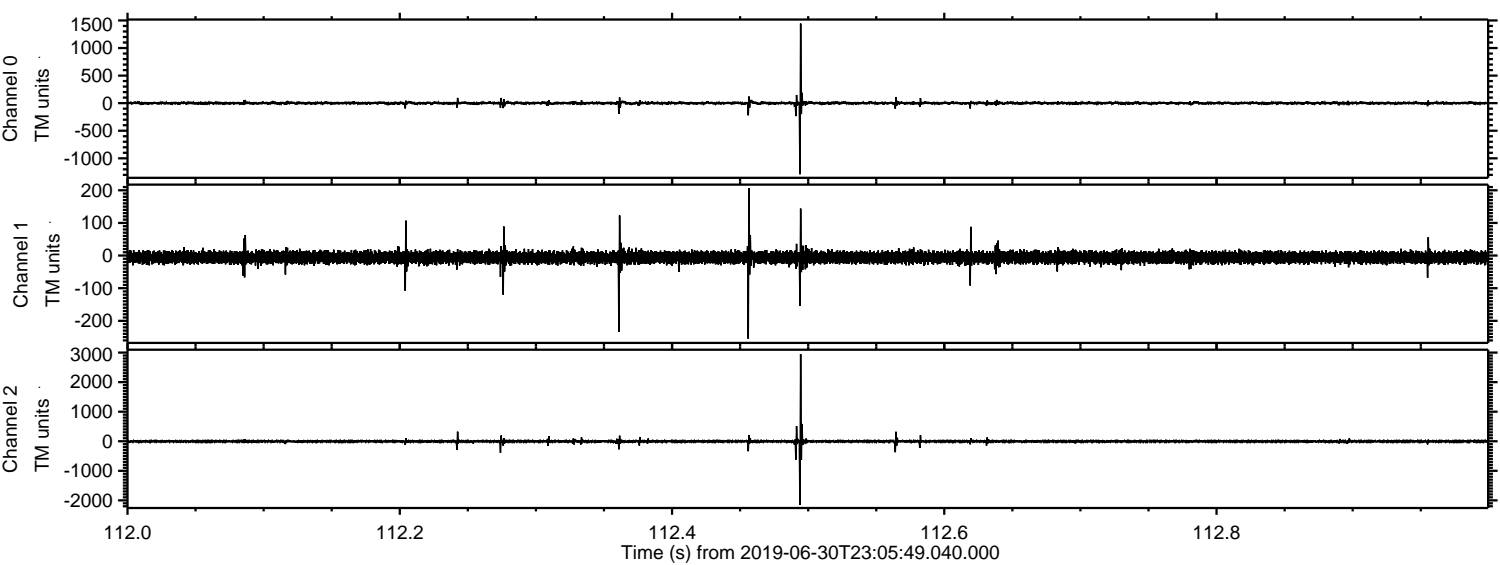
ELMAVAN 3D WAVEFORMS (Measured data sampled at 50 kHz) 50999 packets of 144 samples from 2019-06-30T23:05:49.040.000. Part 134/147

Processed Mon Jul 1 01:13:37 2019 by ELM ver.2012-10-06 from 001__elm20190630_230548__dat00.bin

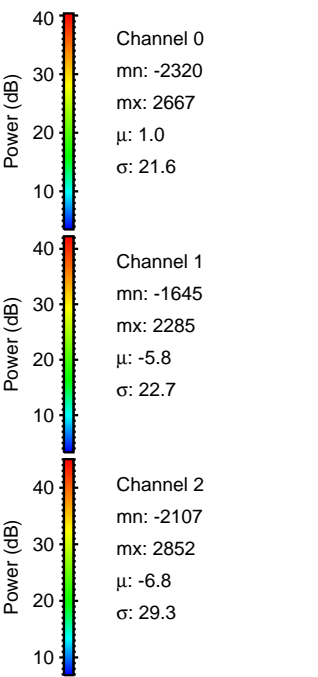
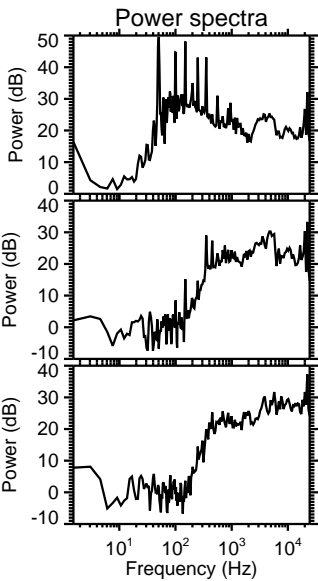
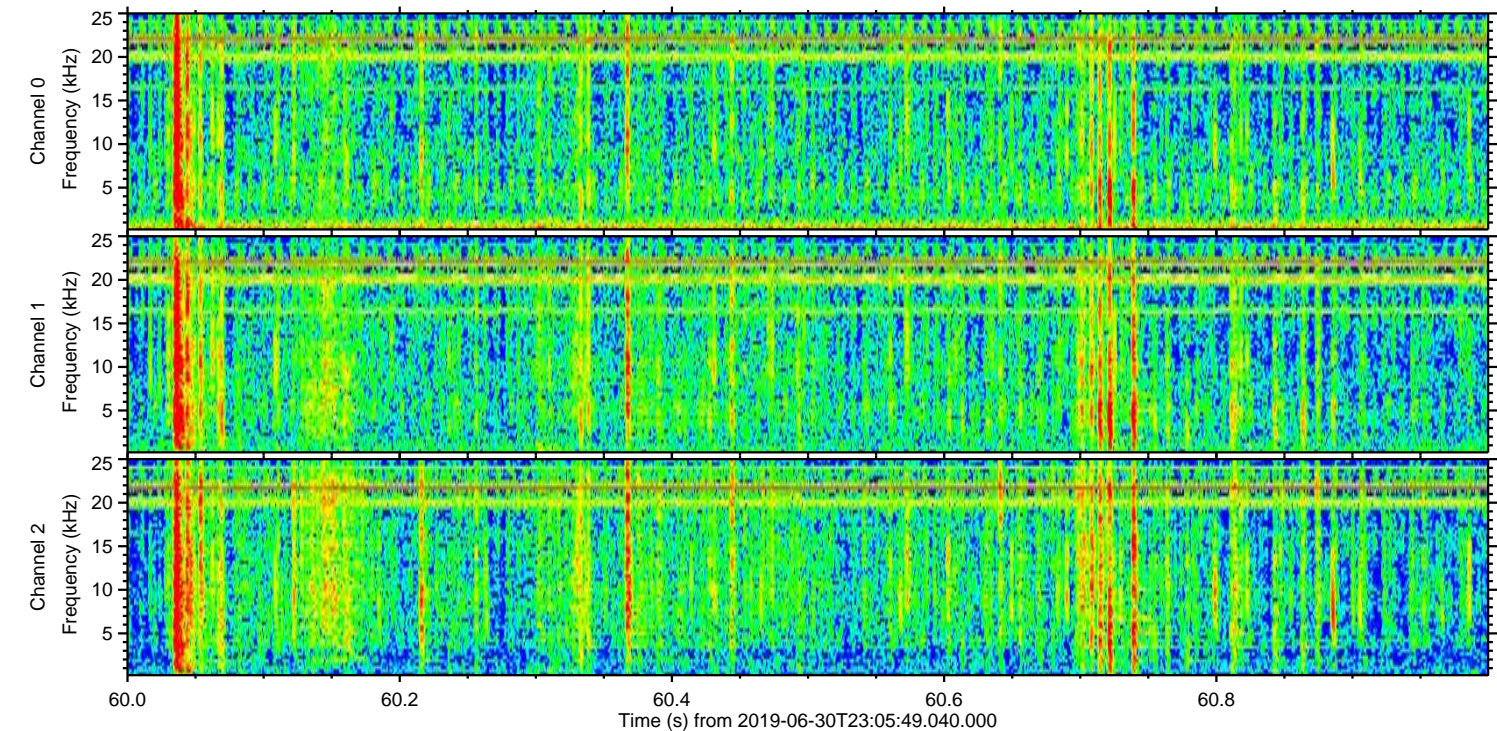
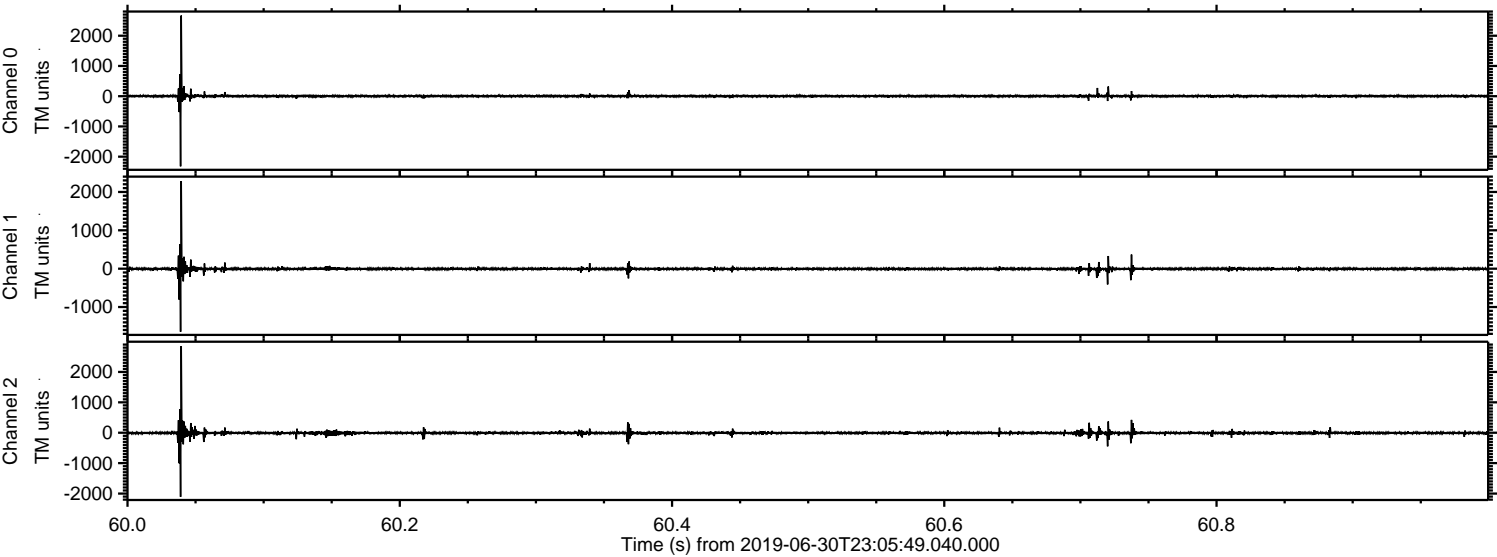


ELMAVAN 3D WAVEFORMS (Measured data sampled at 50 kHz) 50999 packets of 144 samples from 2019-06-30T23:05:49.040.000. Part 113/147

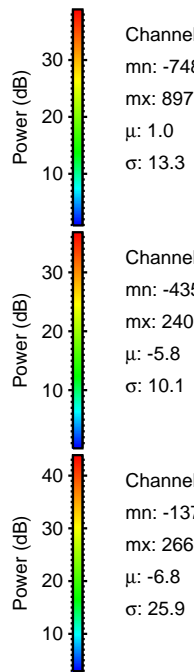
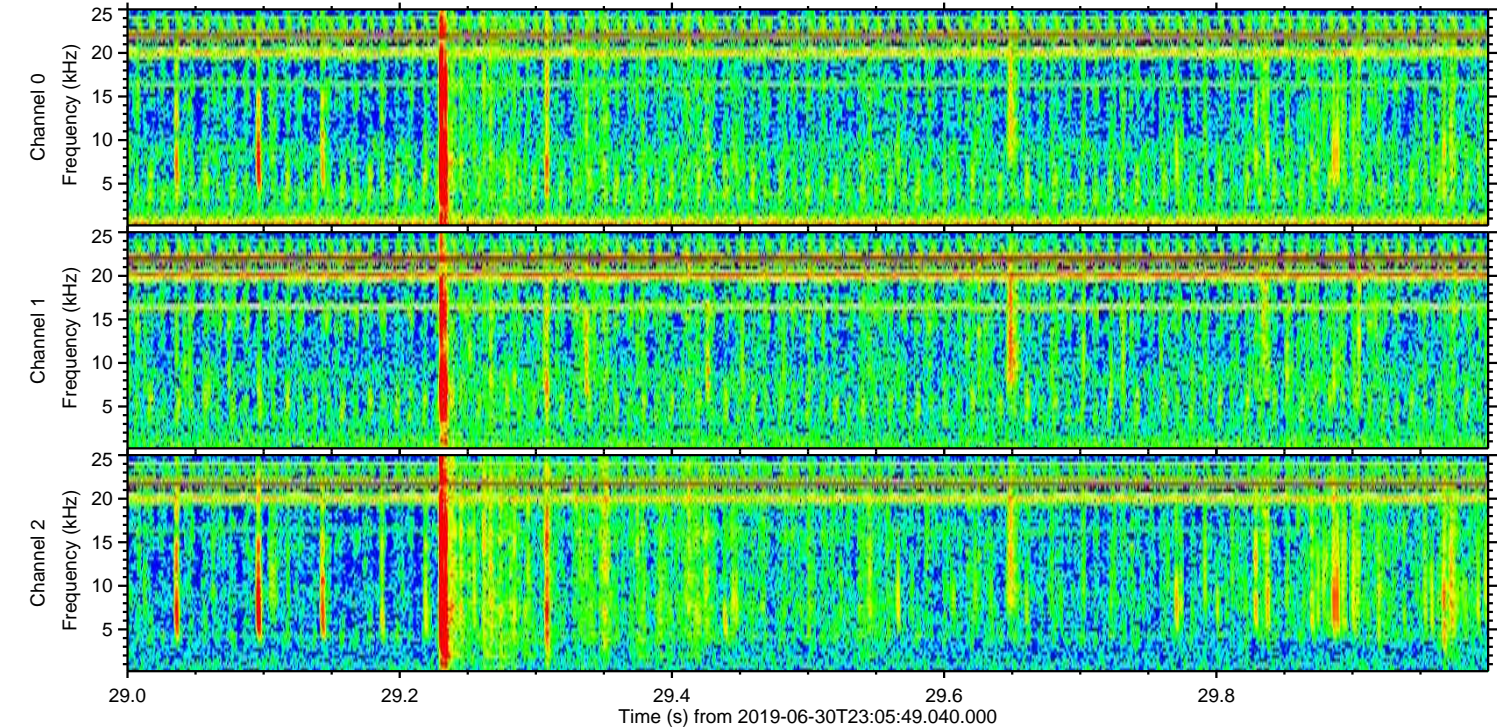
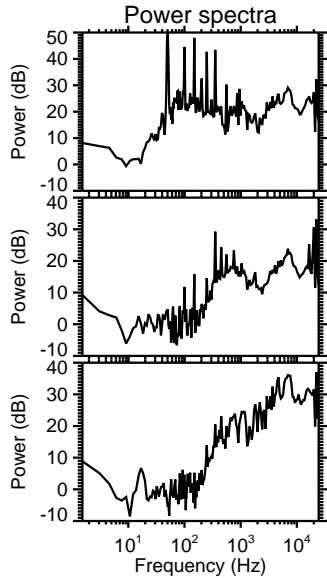
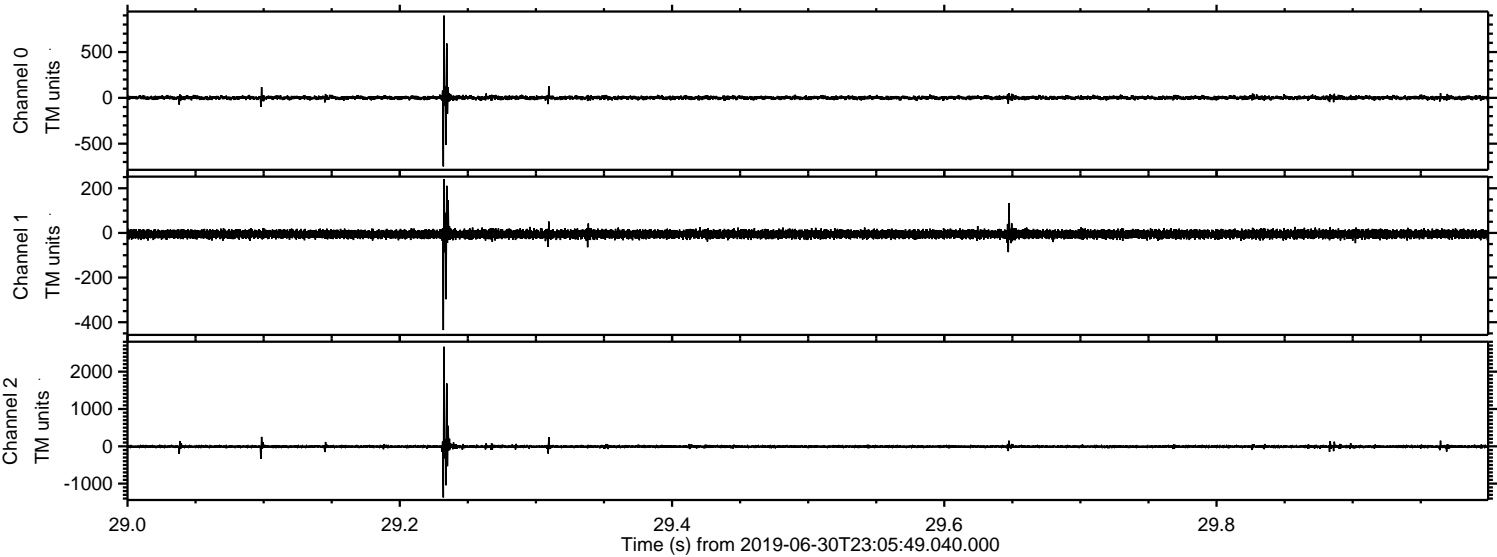
Processed Mon Jul 1 01:13:38 2019 by ELM ver.2012-10-06 from 001__elm20190630_230548__dat00.bin



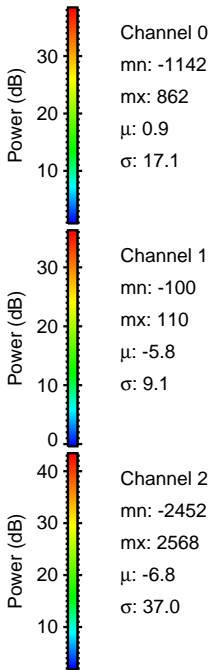
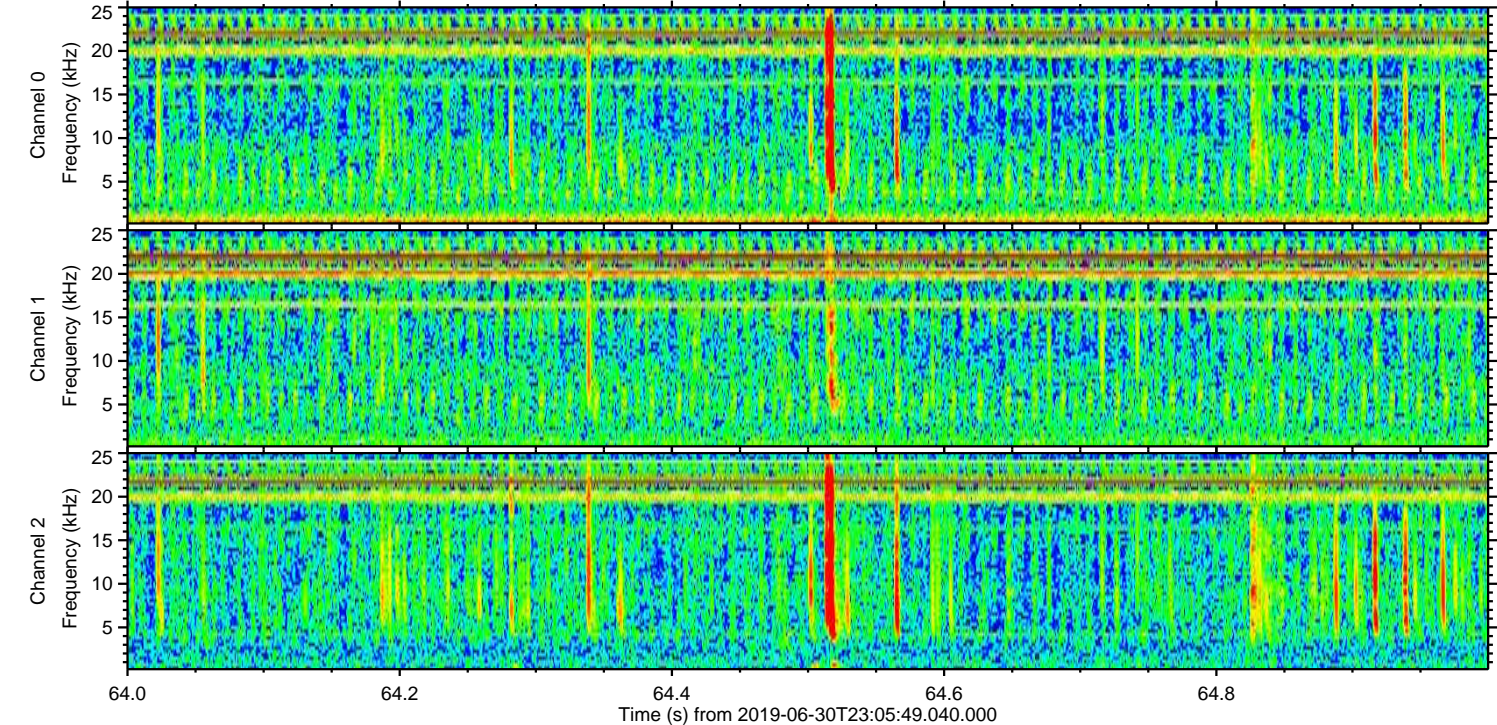
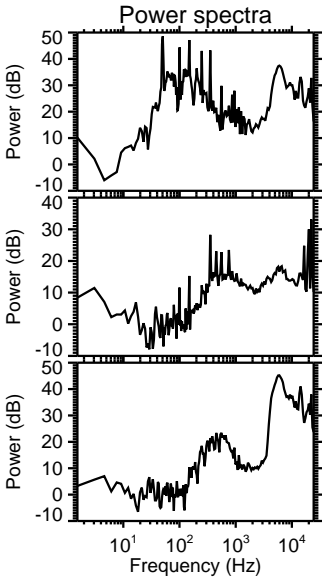
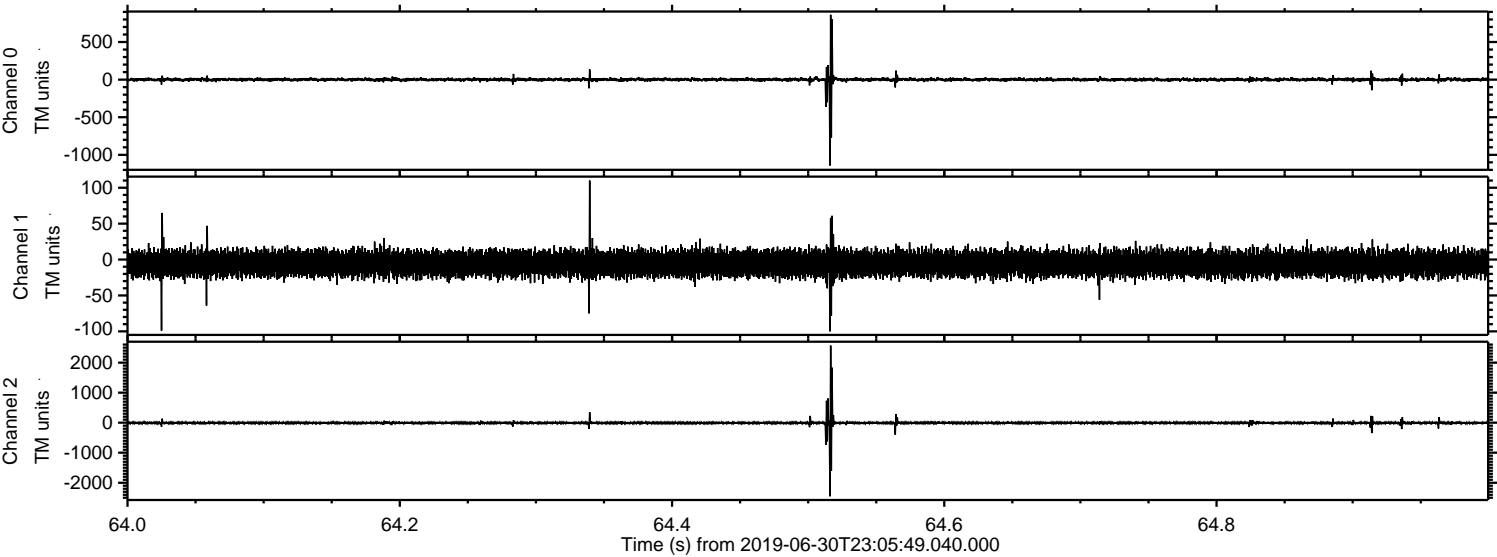
Processed Mon Jul 1 01:13:39 2019 by ELM ver.2012-10-06 from 001__elm20190630_230548__dat00.bin



Processed Mon Jul 1 01:13:39 2019 by ELM ver.2012-10-06 from 001__elm20190630_230548__dat00.bin



Processed Mon Jul 1 01:13:40 2019 by ELM ver.2012-10-06 from 001__elm20190630_230548__dat00.bin



Processed Mon Jul 1 01:13:40 2019 by ELM ver.2012-10-06 from 001__elm20190630_230548__dat00.bin

