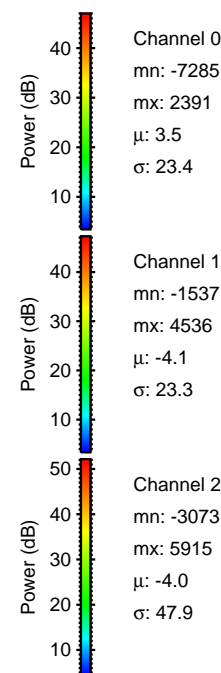
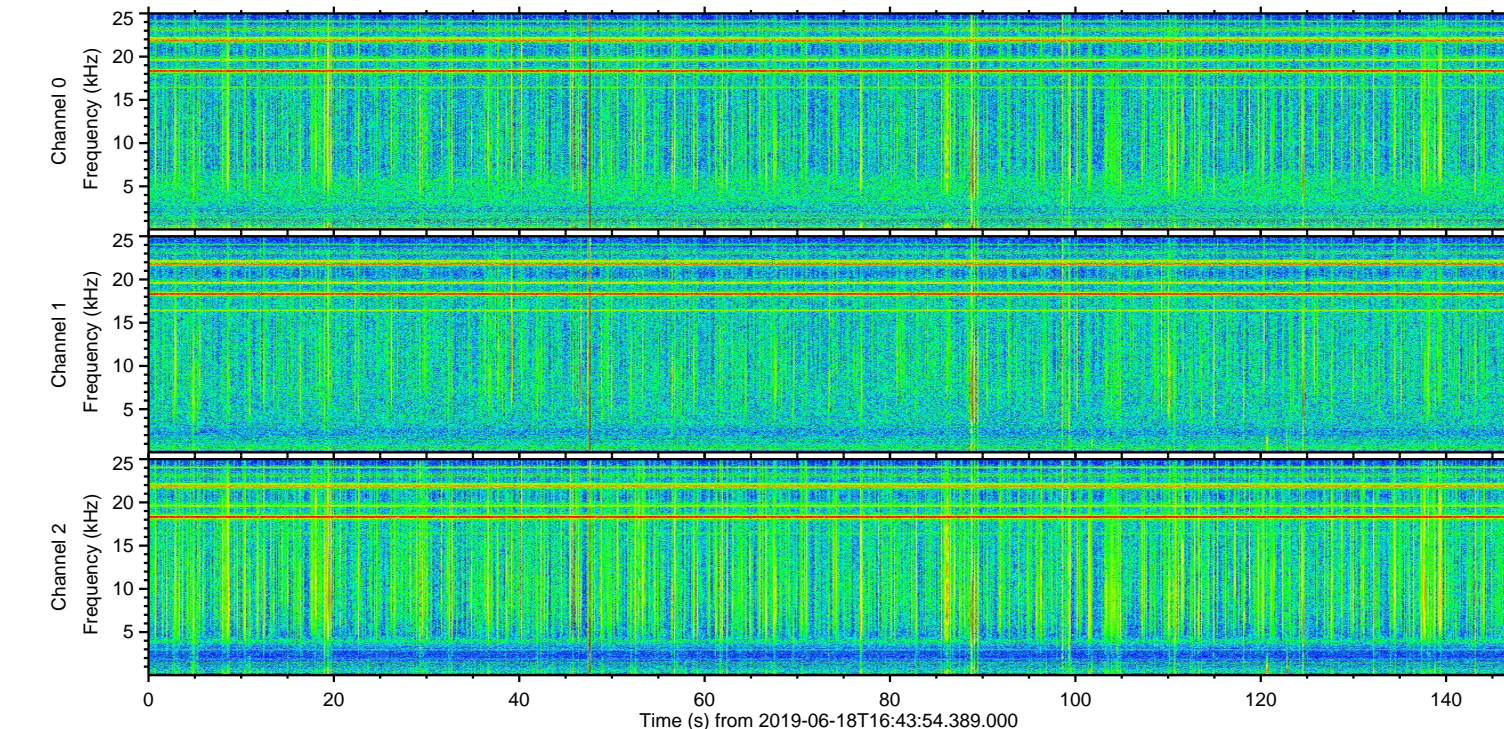
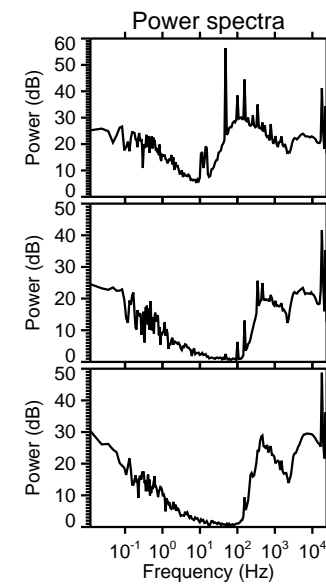
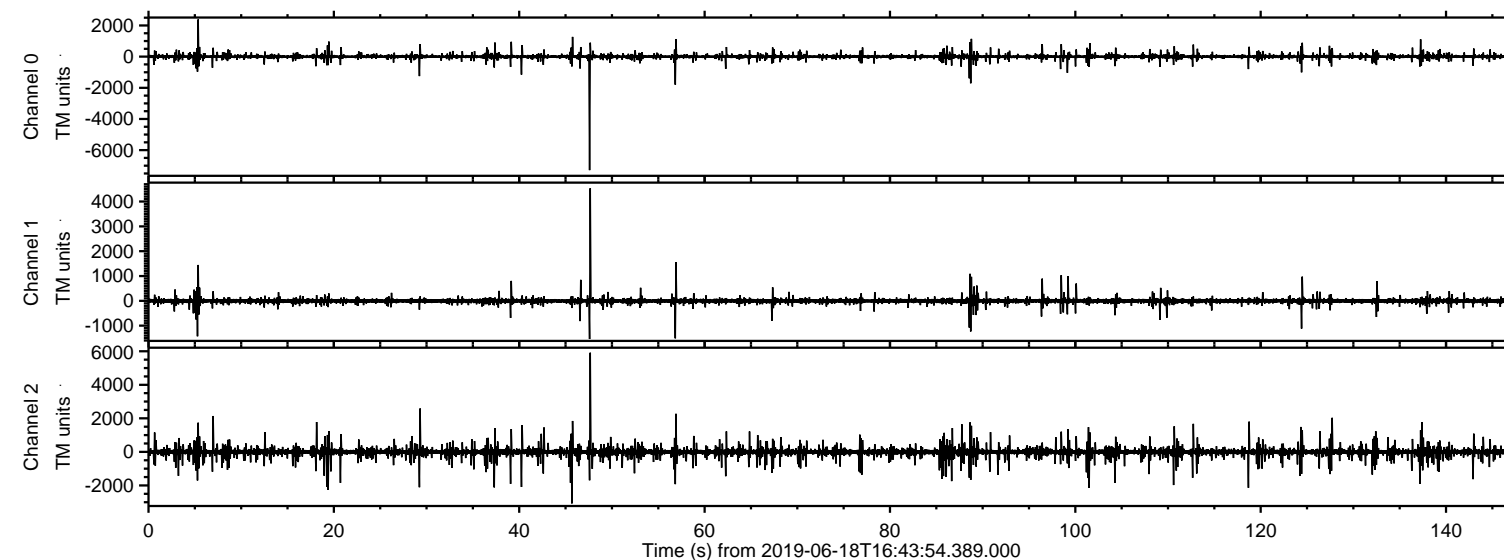
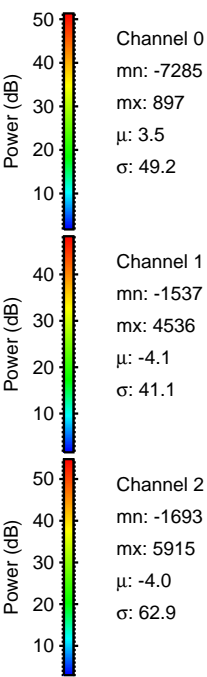
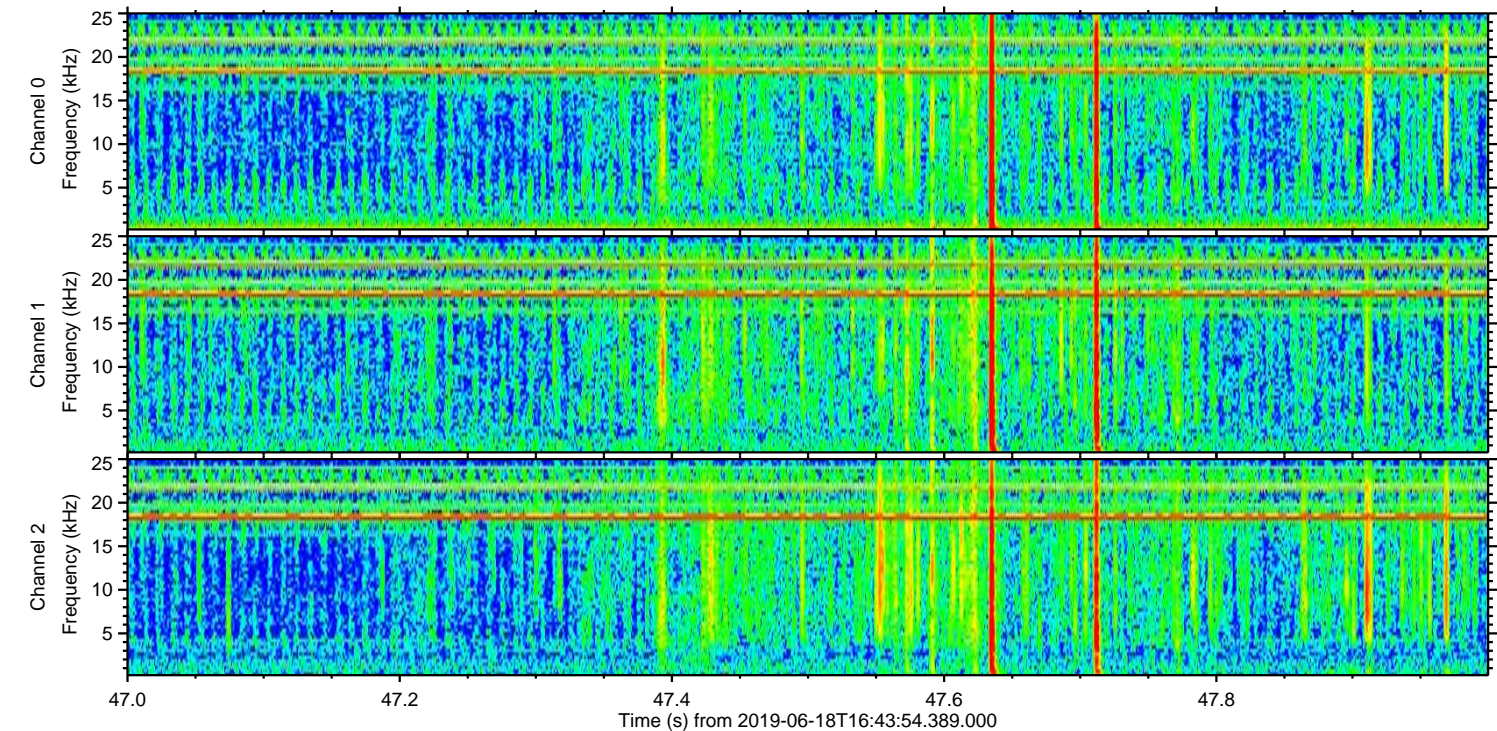
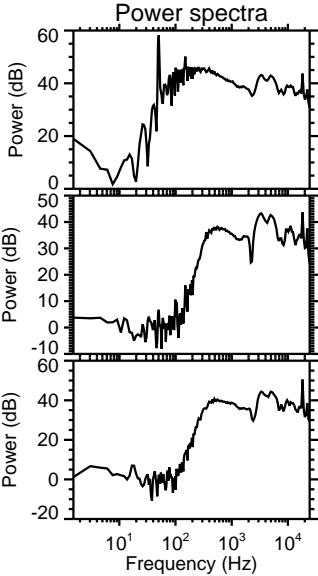
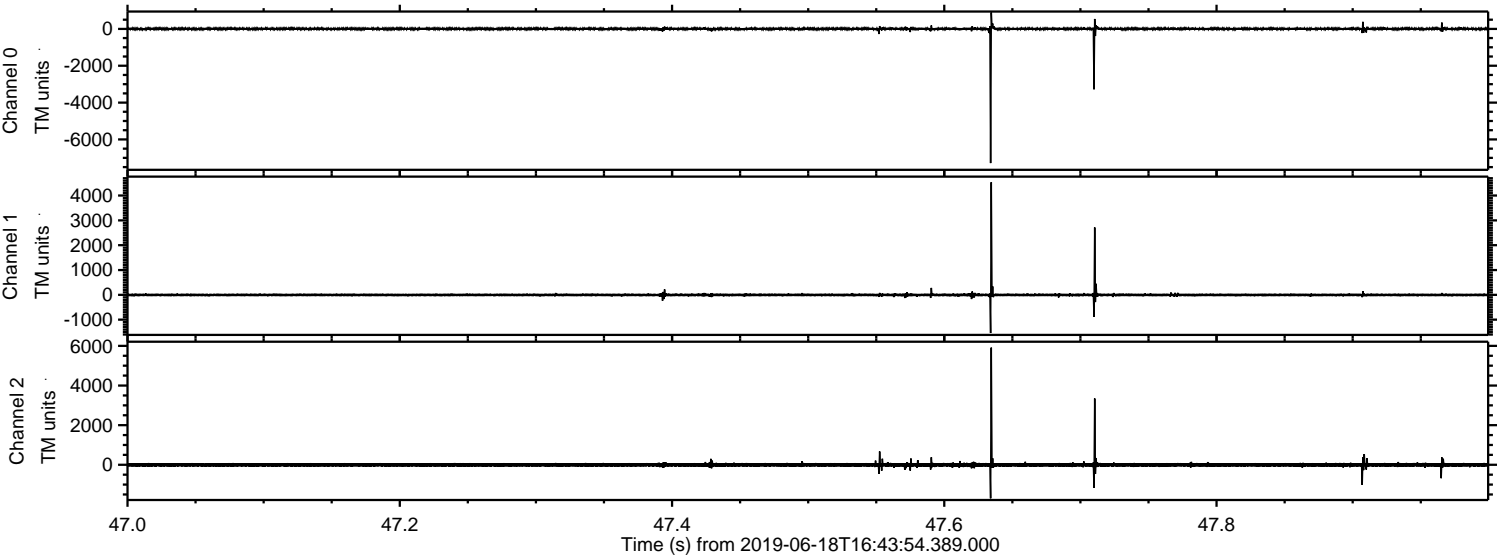


ELMAVAN 3D WAVEFORMS (Measured data sampled at 50 kHz) 51000 packets of 144 samples from 2019-06-18T16:43:54.389.000.

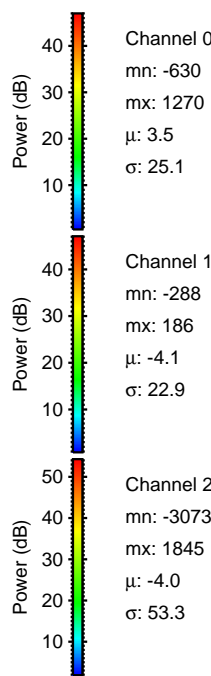
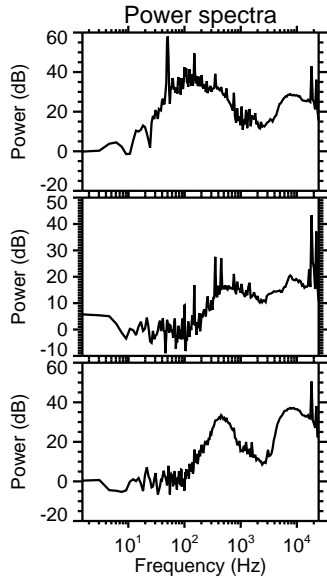
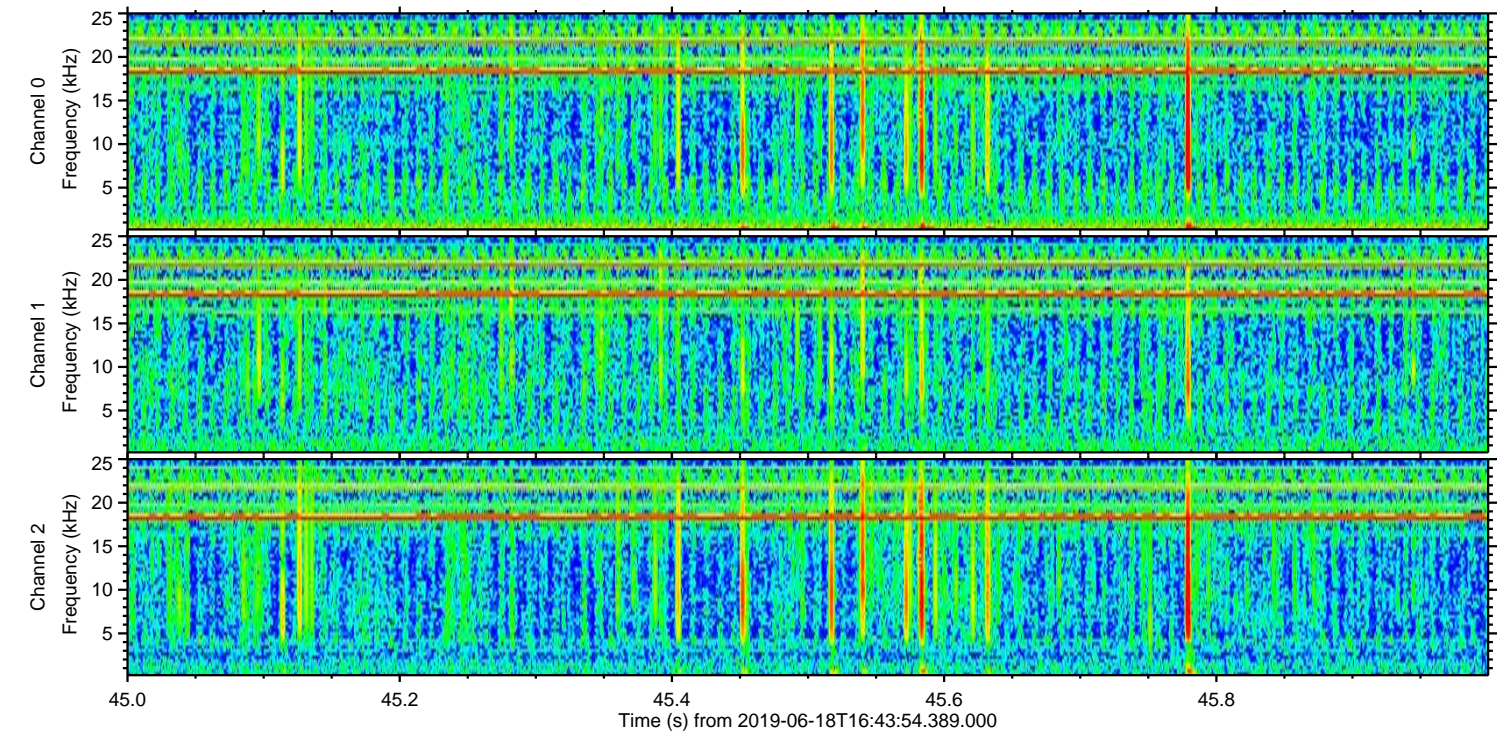
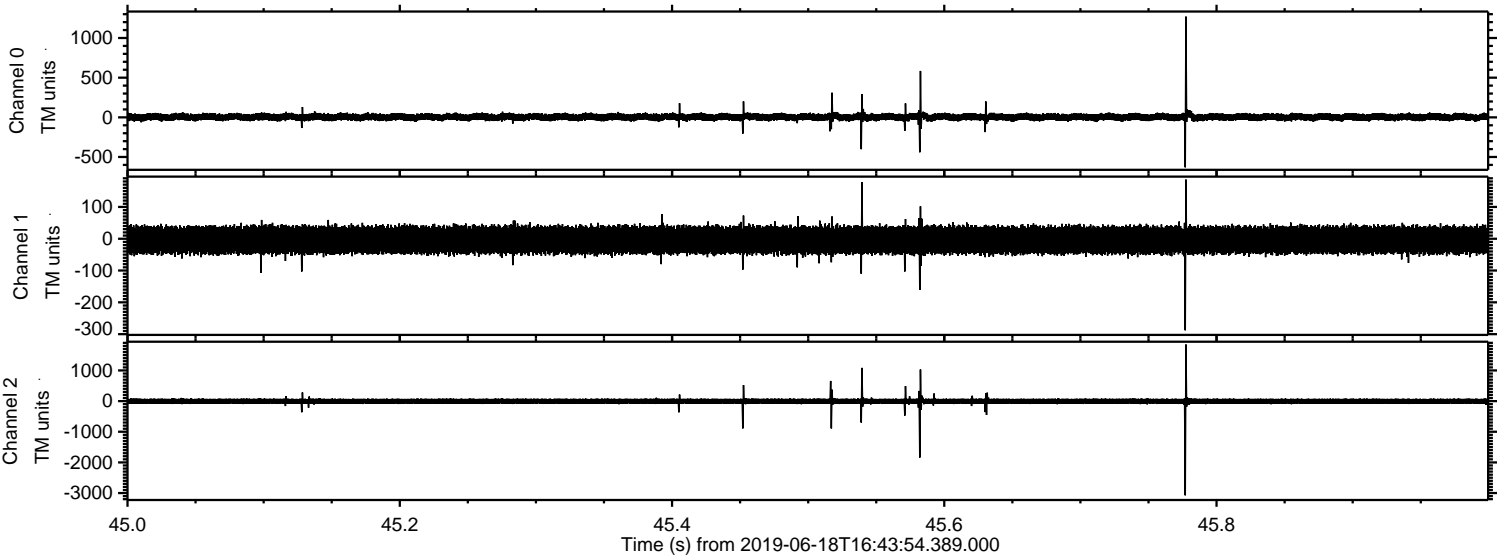
Processed Tue Jun 18 18:51:42 2019 by ELM ver.2012-10-06 from 001__elm20190618_164353__dat00.bin



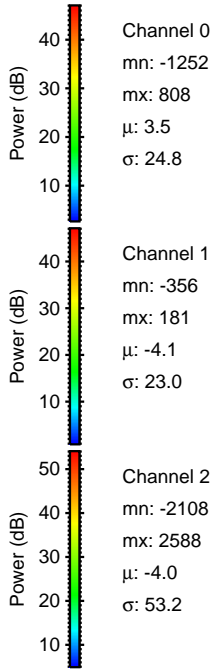
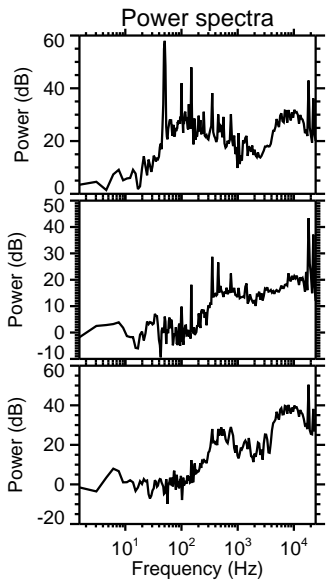
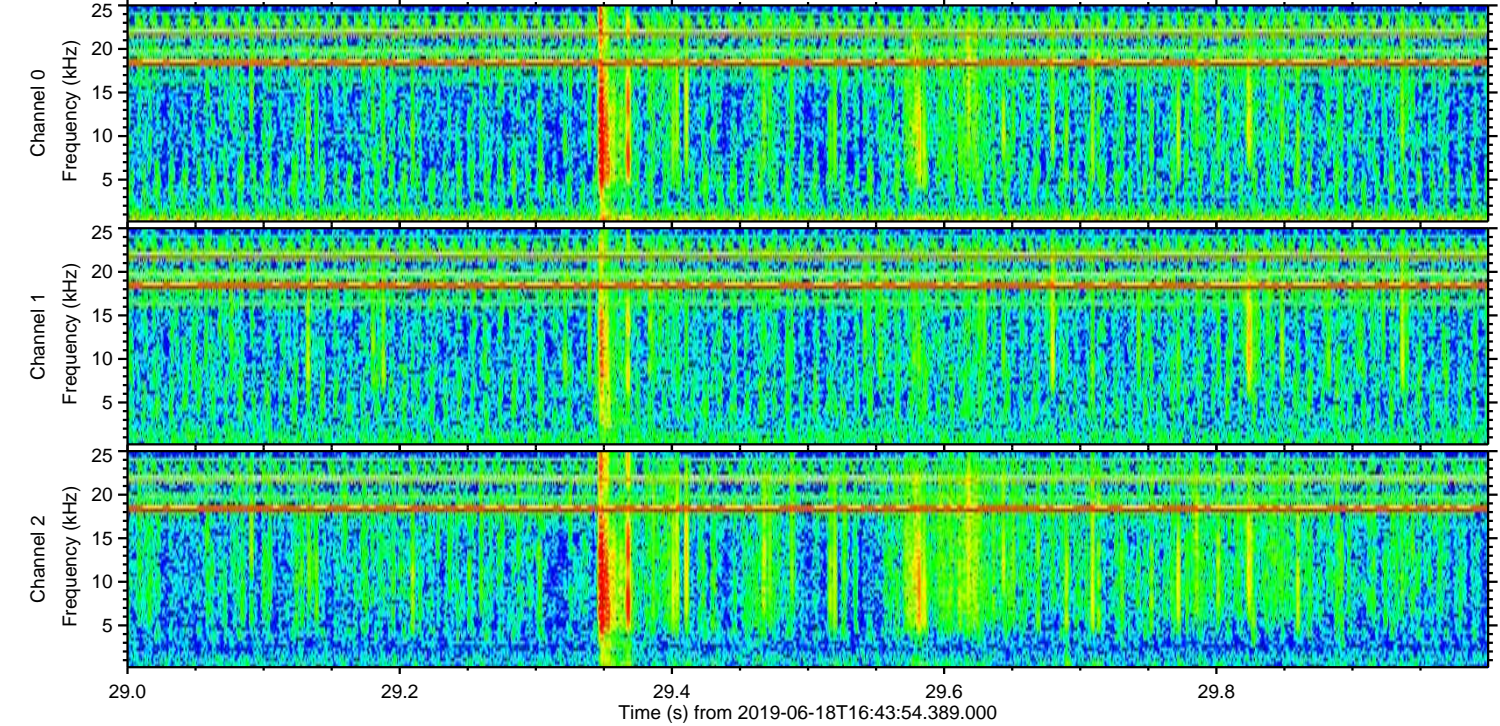
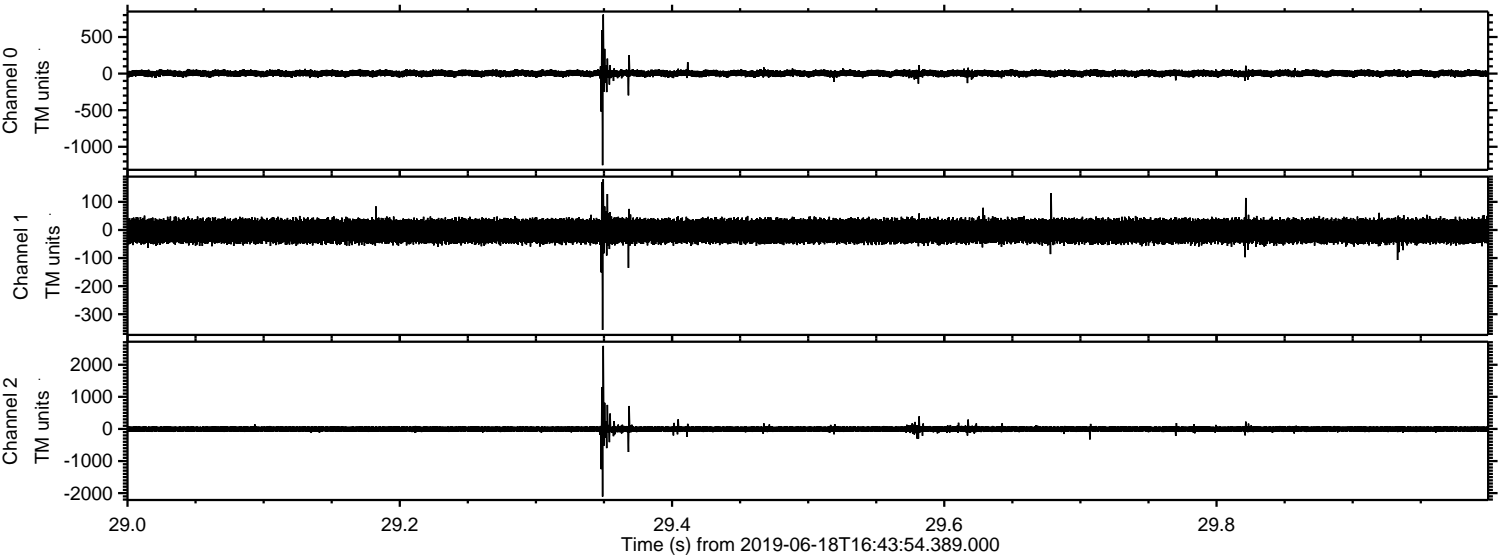
Processed Tue Jun 18 18:51:52 2019 by ELM ver.2012-10-06 from 001__elm20190618_164353__dat00.bin



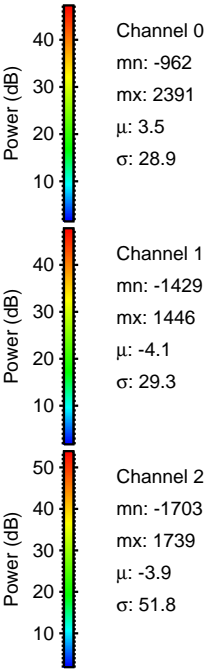
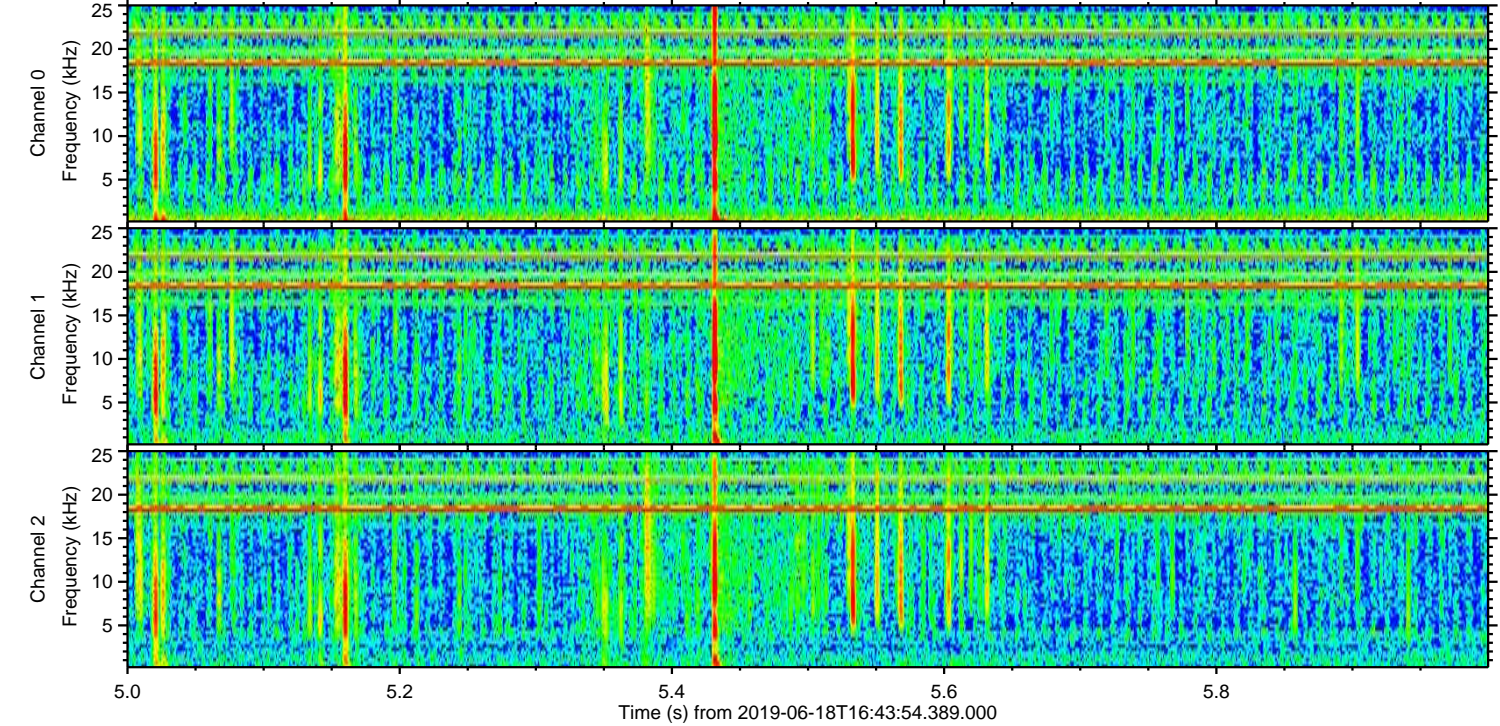
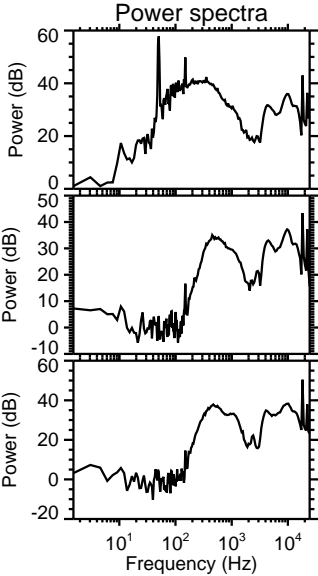
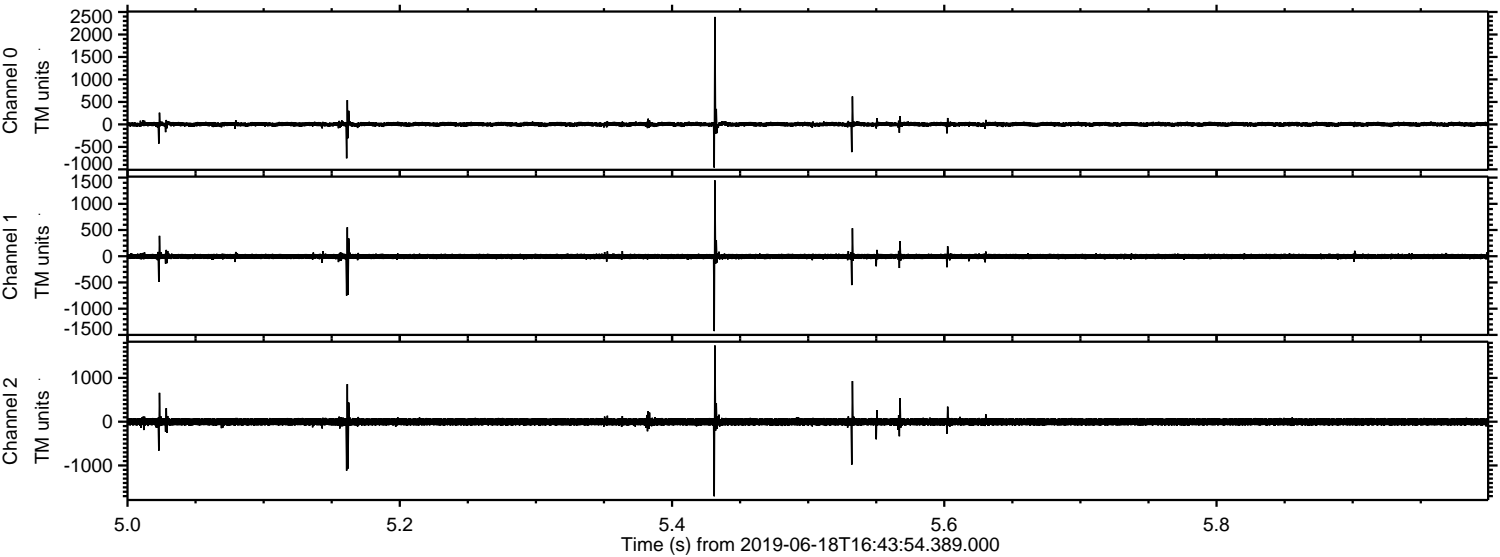
Processed Tue Jun 18 18:51:53 2019 by ELM ver.2012-10-06 from 001__elm20190618_164353__dat00.bin



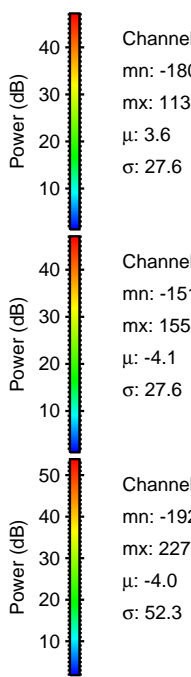
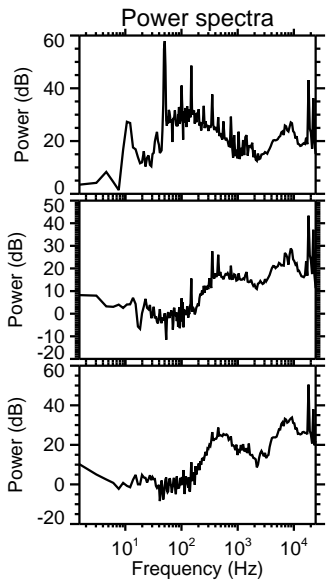
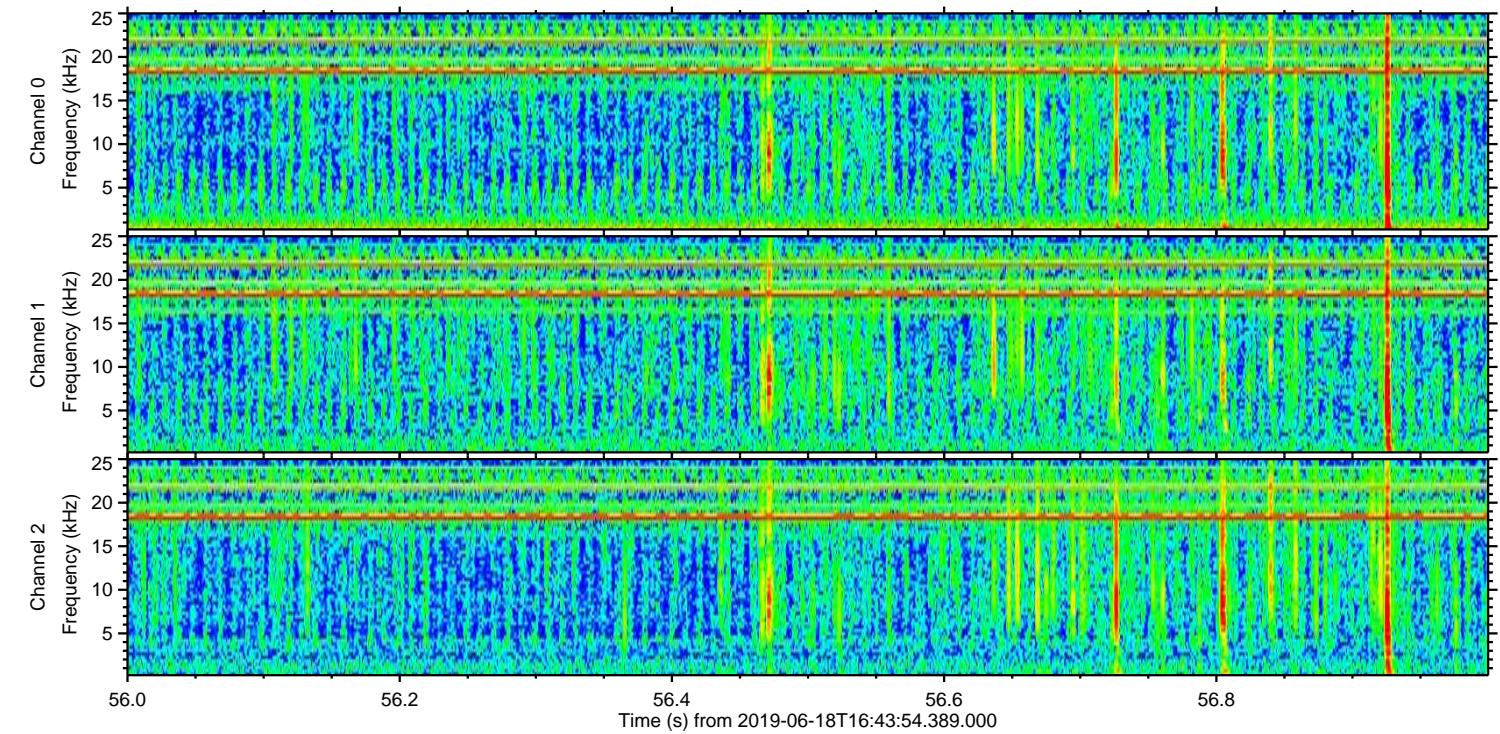
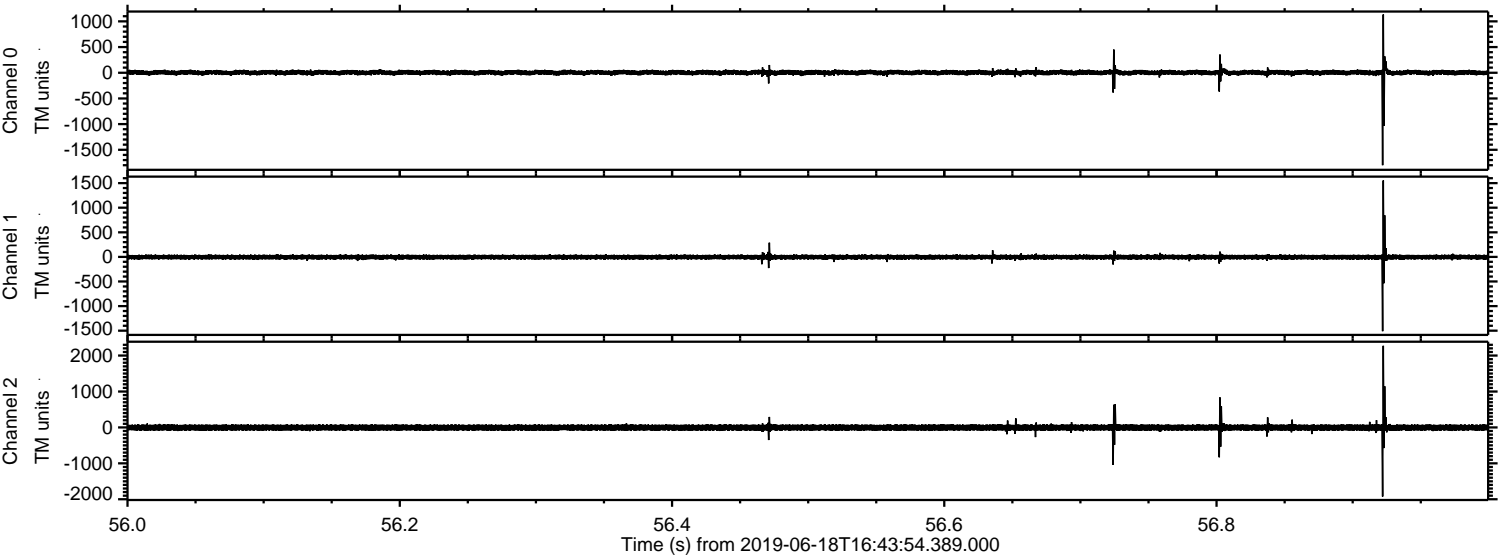
Processed Tue Jun 18 18:51:53 2019 by ELM ver.2012-10-06 from 001__elm20190618_164353__dat00.bin



Processed Tue Jun 18 18:51:54 2019 by ELM ver.2012-10-06 from 001__elm20190618_164353__dat00.bin



Processed Tue Jun 18 18:51:55 2019 by ELM ver.2012-10-06 from 001__elm20190618_164353__dat00.bin

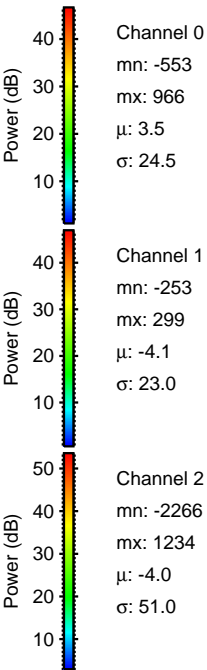
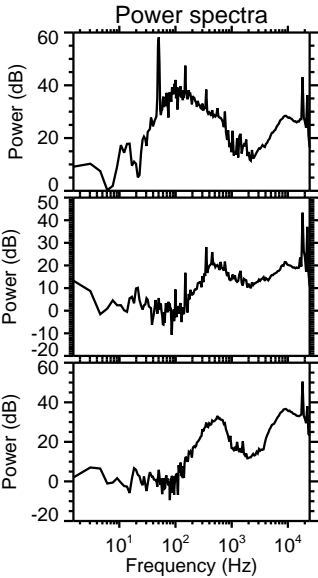
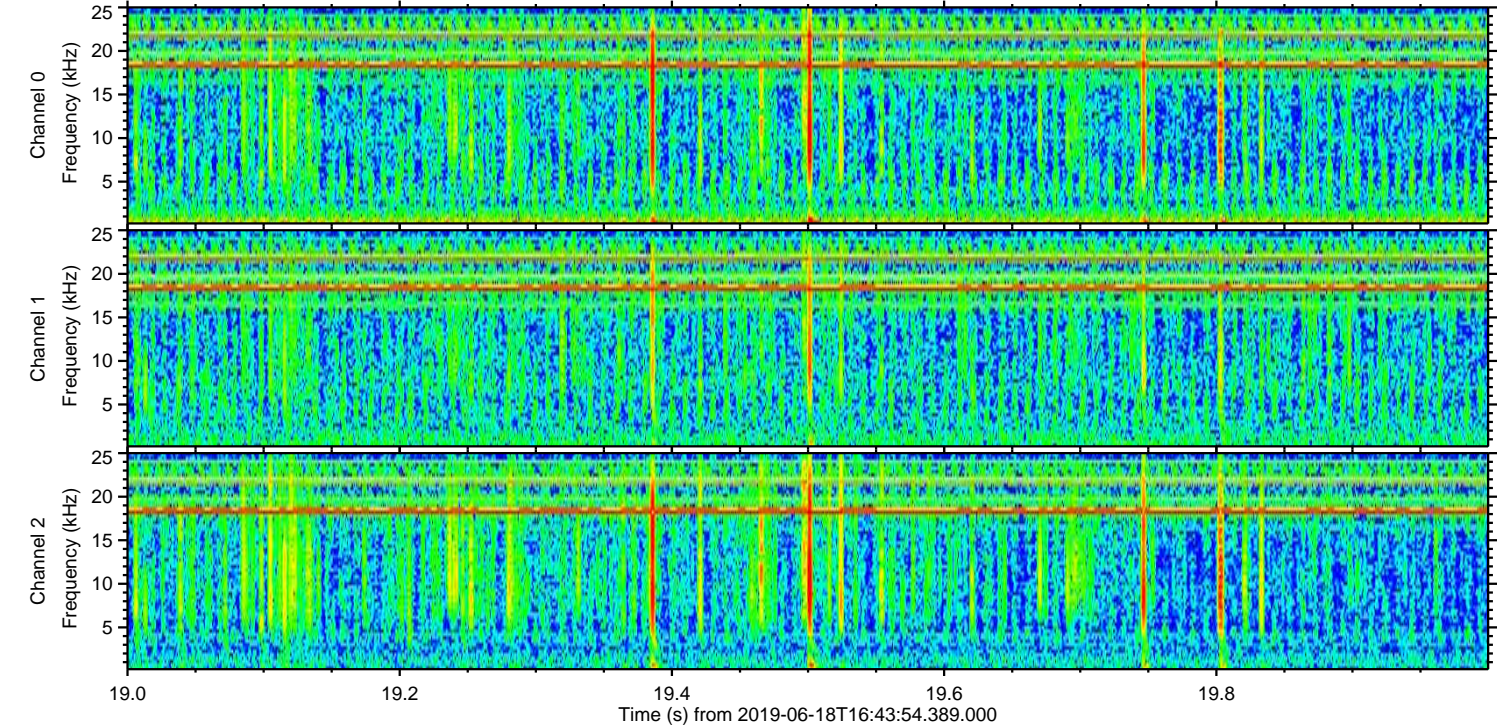
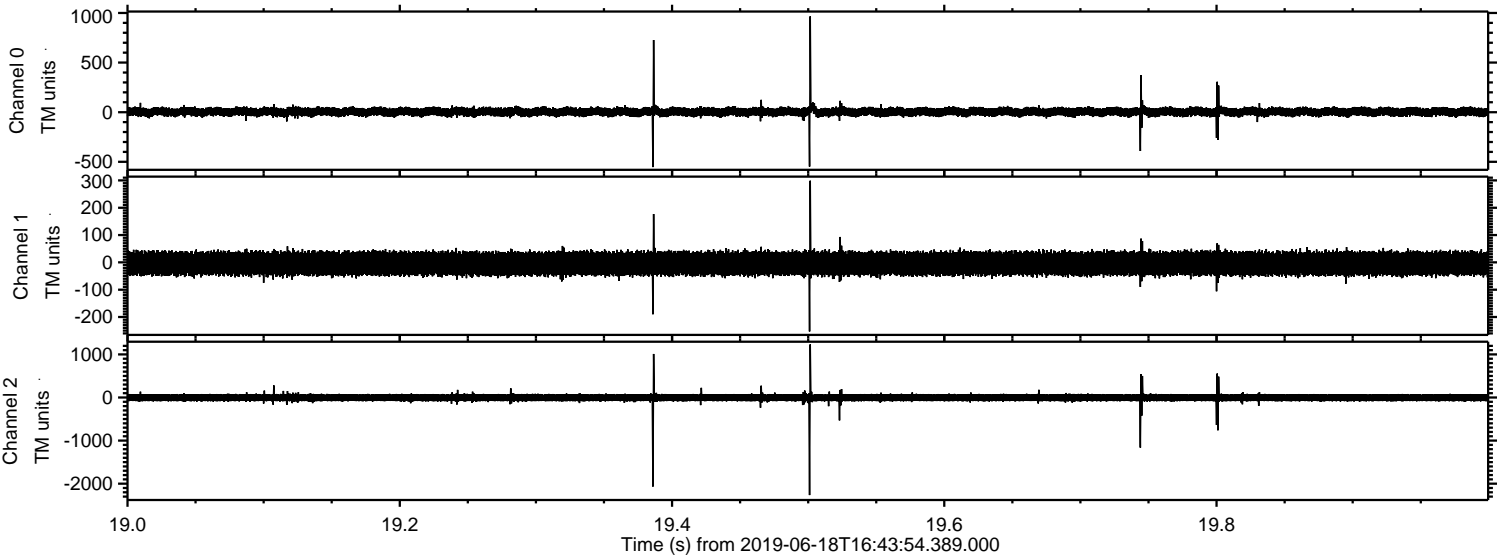


Channel 0
mn: -1800
mx: 1135
 μ : 3.6
 σ : 27.6

Channel 1
mn: -1510
mx: 1554
 μ : -4.1
 σ : 27.6

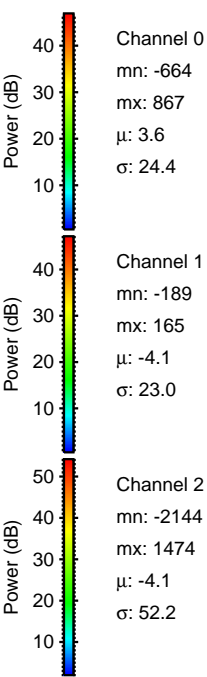
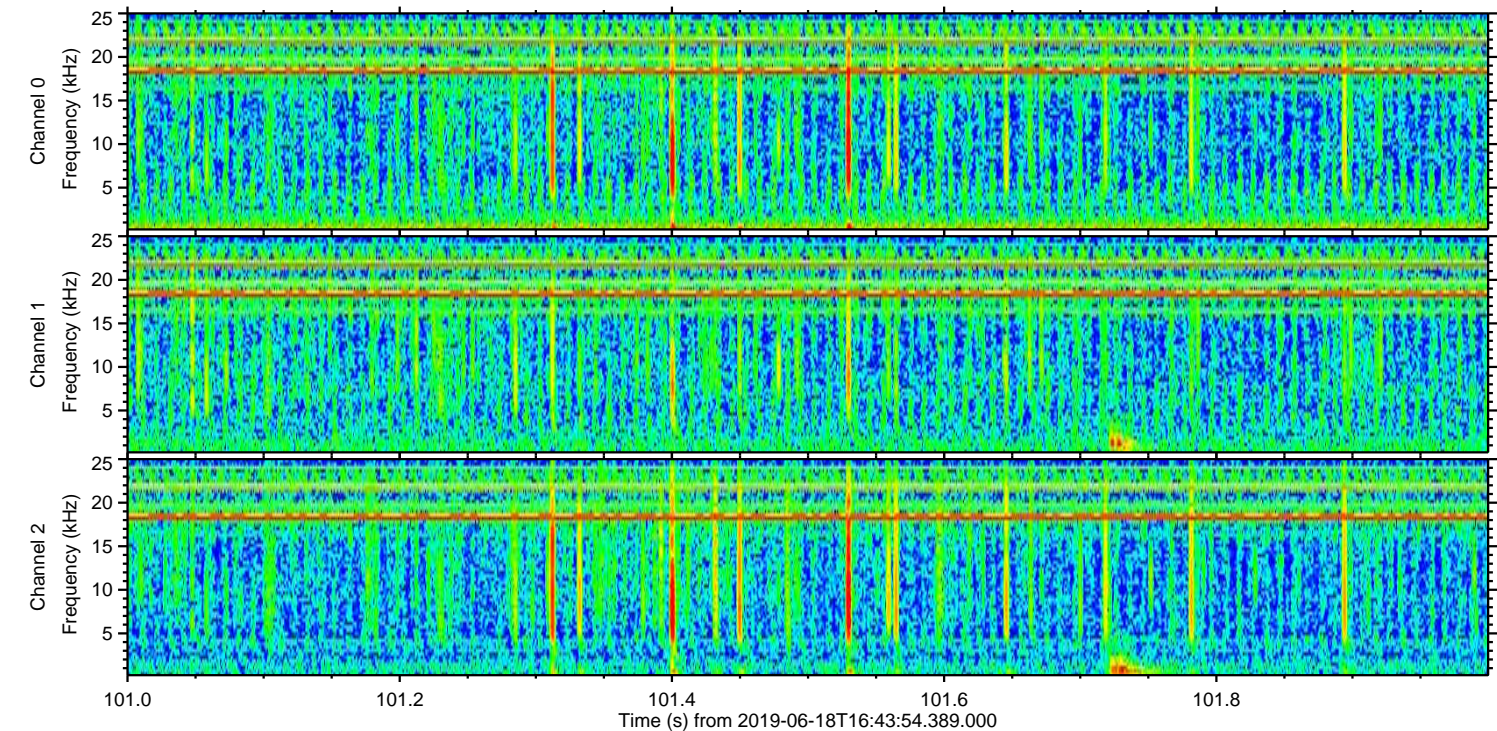
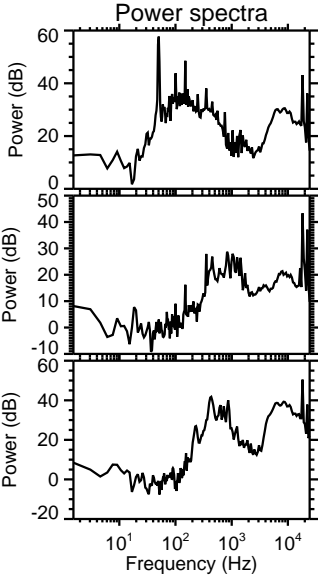
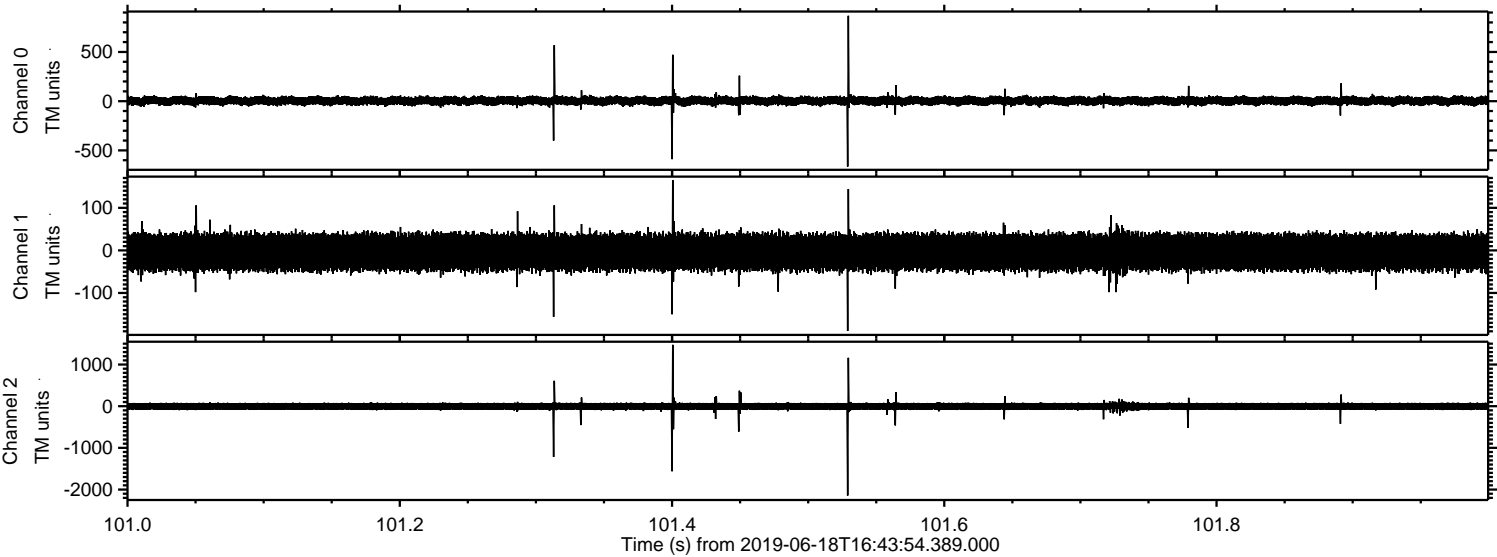
Channel 2
mn: -1924
mx: 2272
 μ : -4.0
 σ : 52.3

Processed Tue Jun 18 18:51:56 2019 by ELM ver.2012-10-06 from 001__elm20190618_164353__dat00.bin



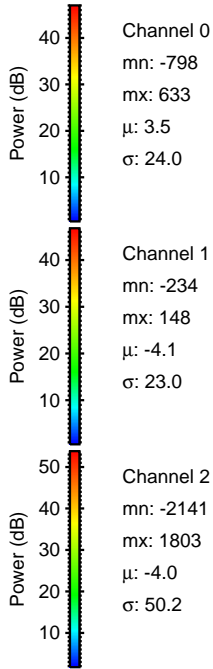
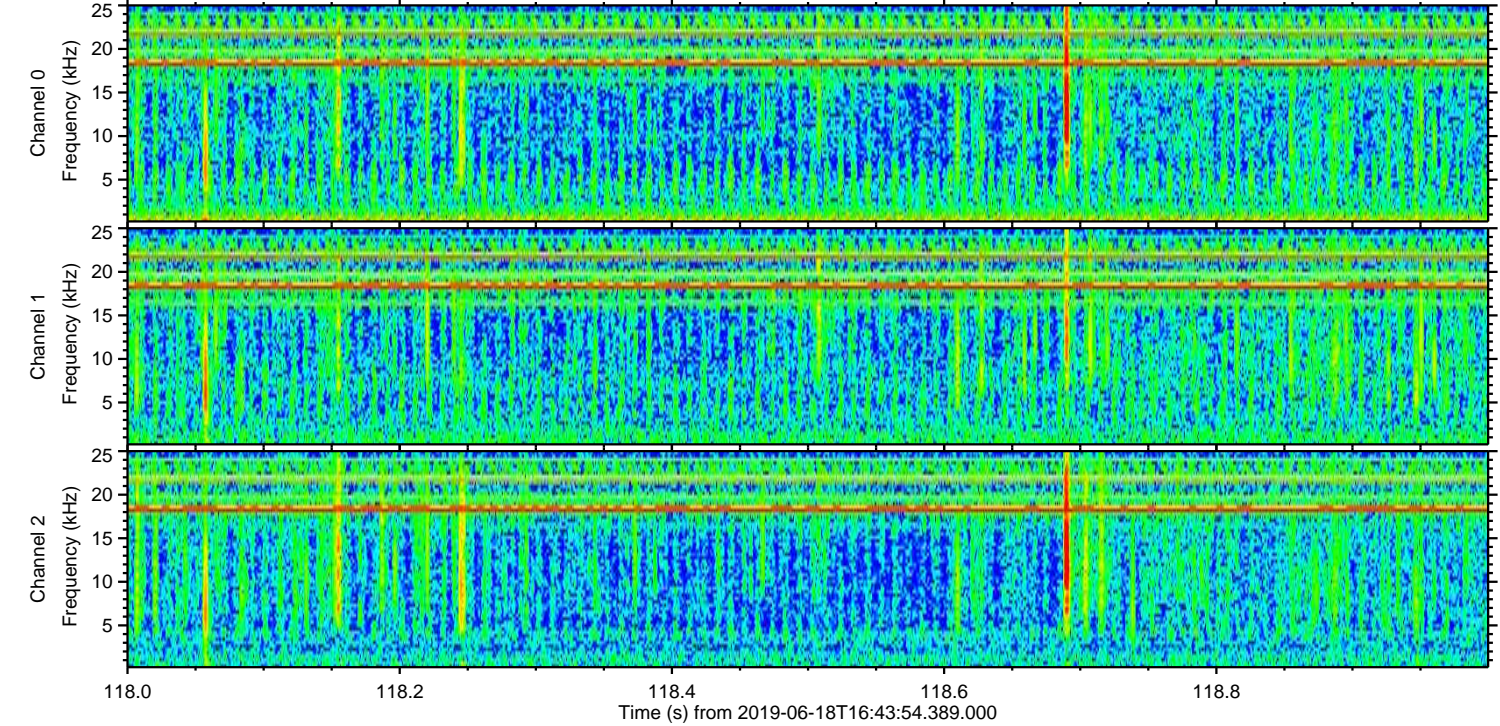
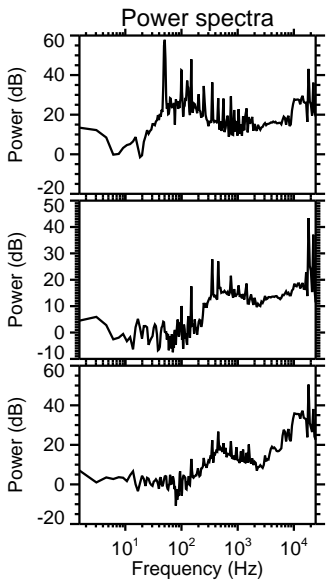
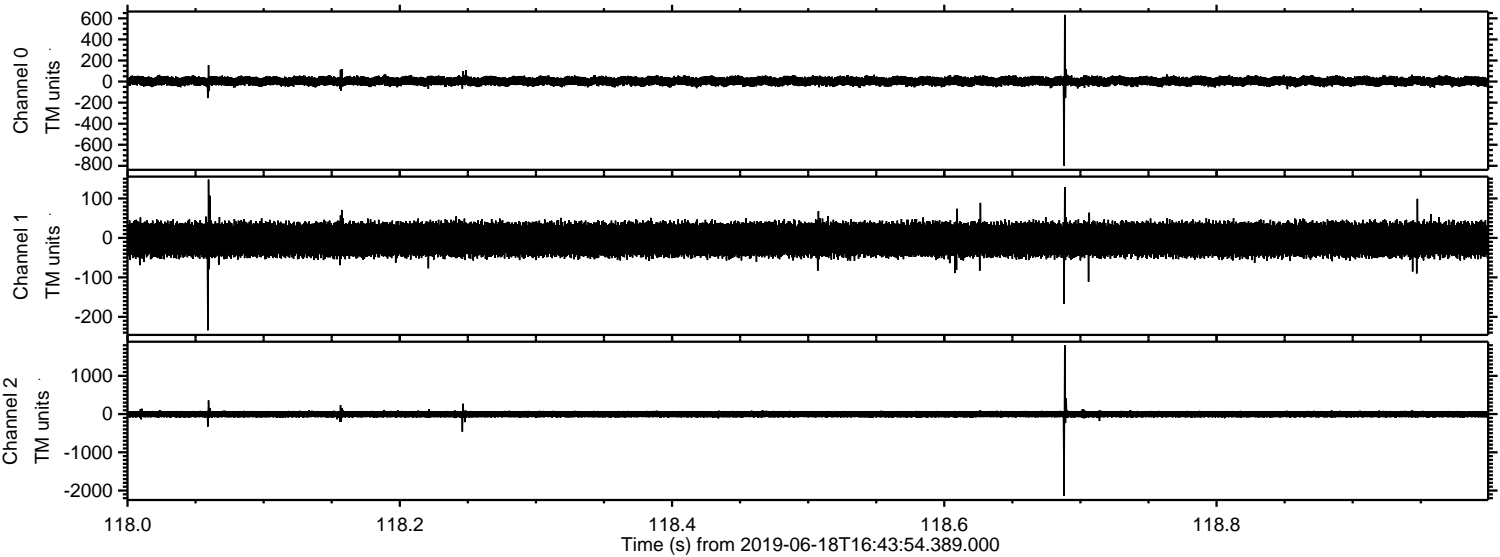
ELMAVAN 3D WAVEFORMS (Measured data sampled at 50 kHz) 51000 packets of 144 samples from 2019-06-18T16:43:54.389.000. Part 102/147

Processed Tue Jun 18 18:51:57 2019 by ELM ver.2012-10-06 from 001__elm20190618_164353__dat00.bin



ELMAVAN 3D WAVEFORMS (Measured data sampled at 50 kHz) 51000 packets of 144 samples from 2019-06-18T16:43:54.389.000. Part 119/147

Processed Tue Jun 18 18:51:58 2019 by ELM ver.2012-10-06 from 001__elm20190618_164353__dat00.bin

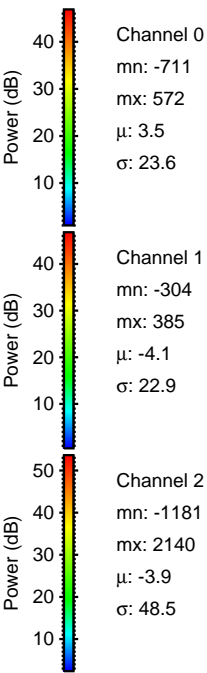
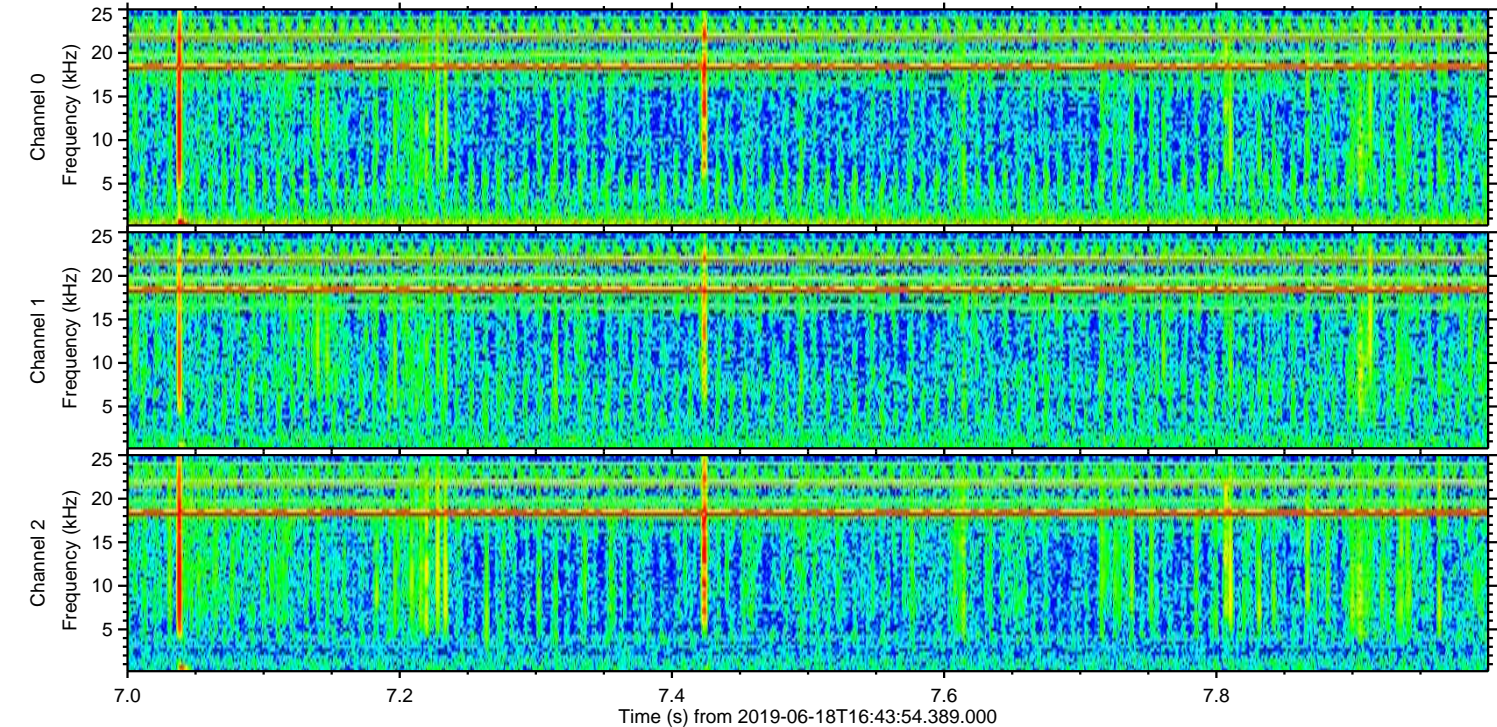
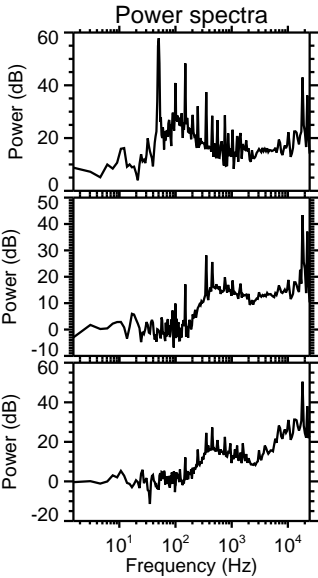
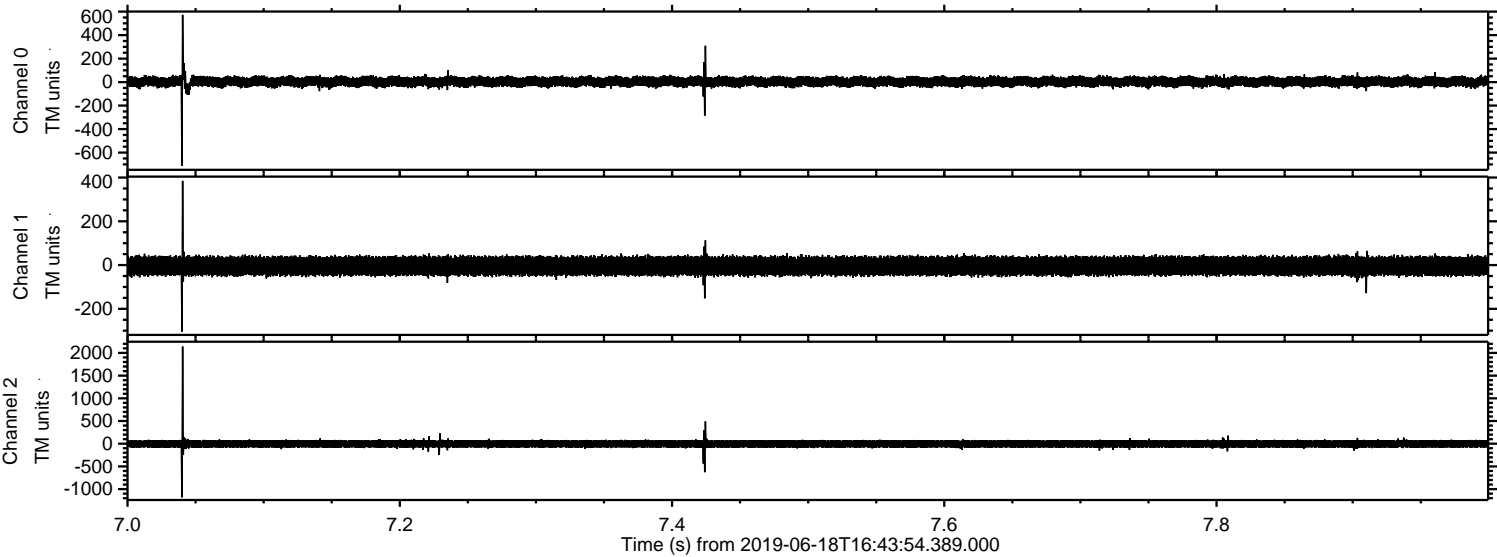


Channel 0
mn: -798
mx: 633
 μ : 3.5
 σ : 24.0

Channel 1
mn: -234
mx: 148
 μ : -4.1
 σ : 23.0

Channel 2
mn: -2141
mx: 1803
 μ : -4.0
 σ : 50.2

Processed Tue Jun 18 18:51:58 2019 by ELM ver.2012-10-06 from 001__elm20190618_164353__dat00.bin



Processed Tue Jun 18 18:51:59 2019 by ELM ver.2012-10-06 from 001__elm20190618_164353__dat00.bin

