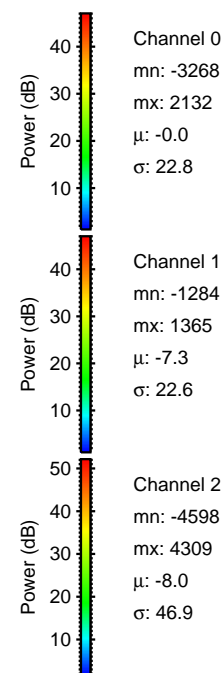
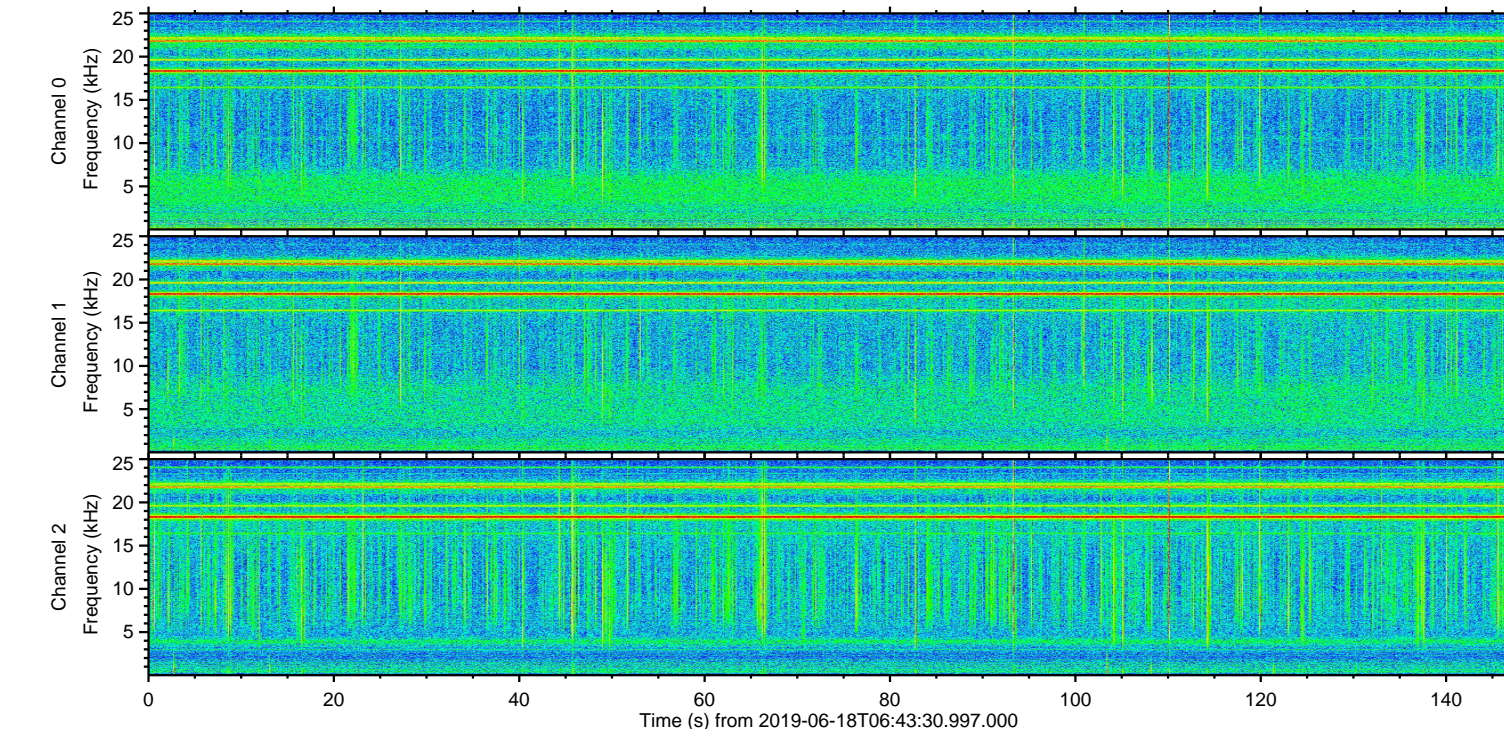
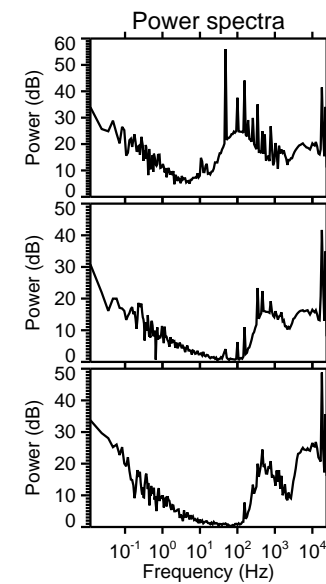
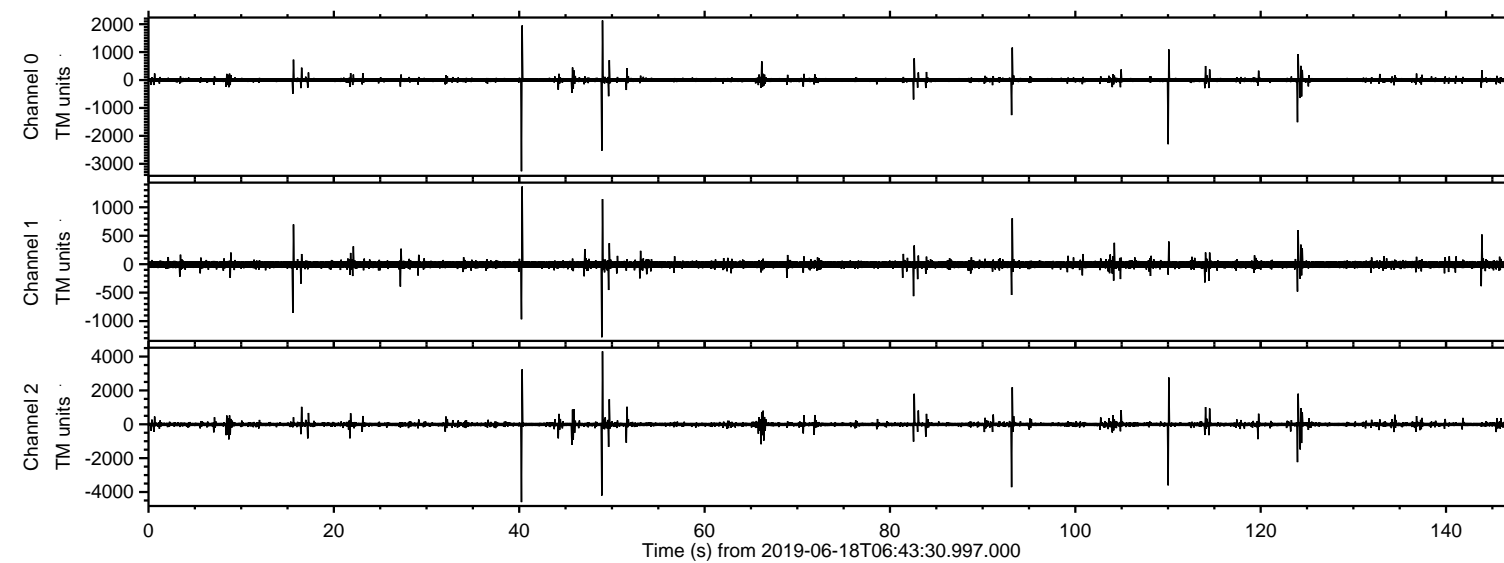
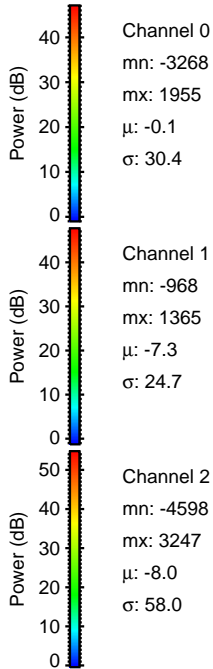
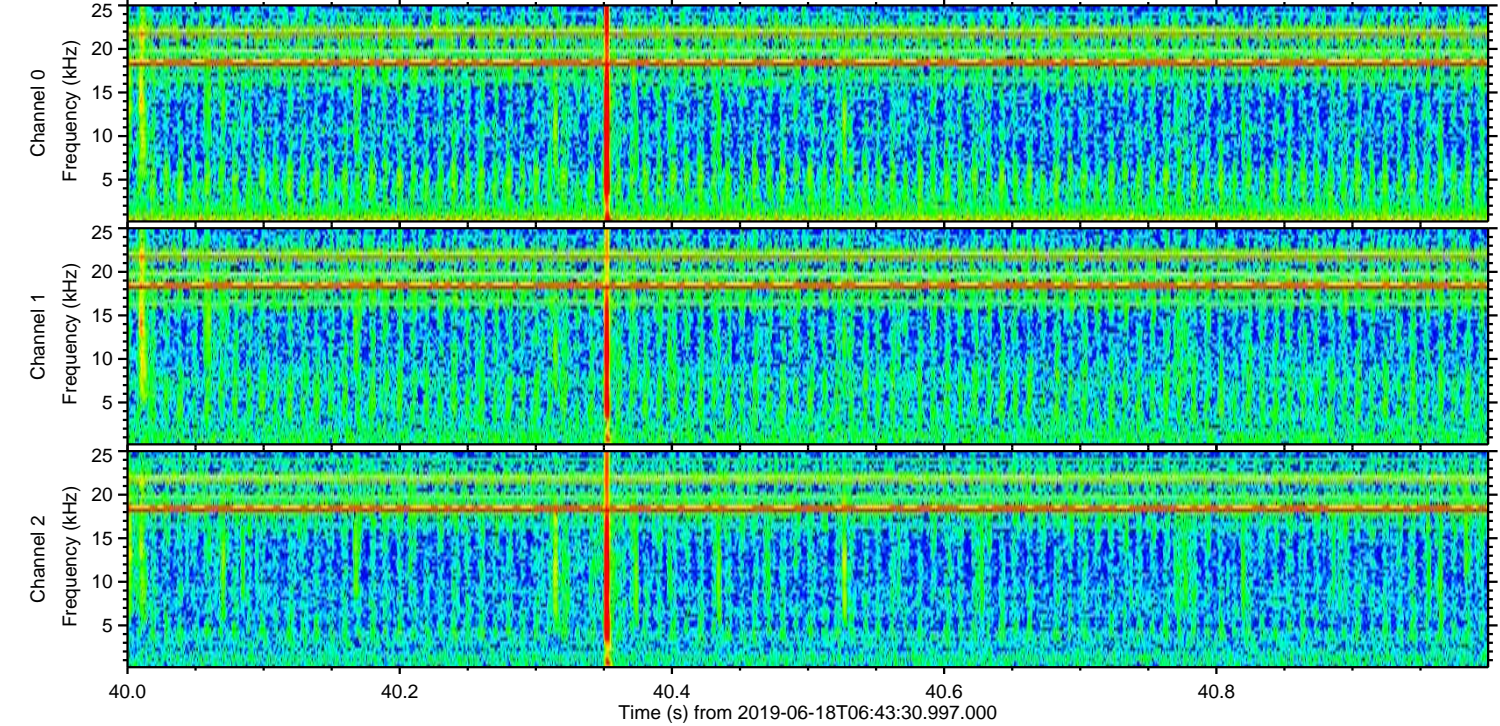
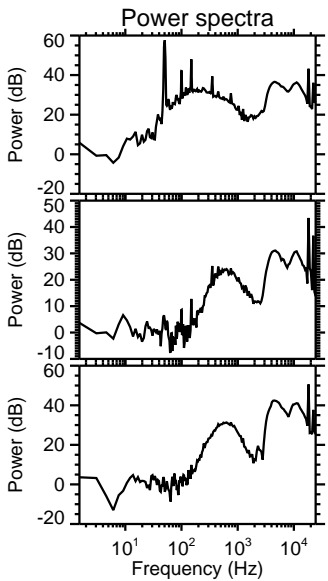
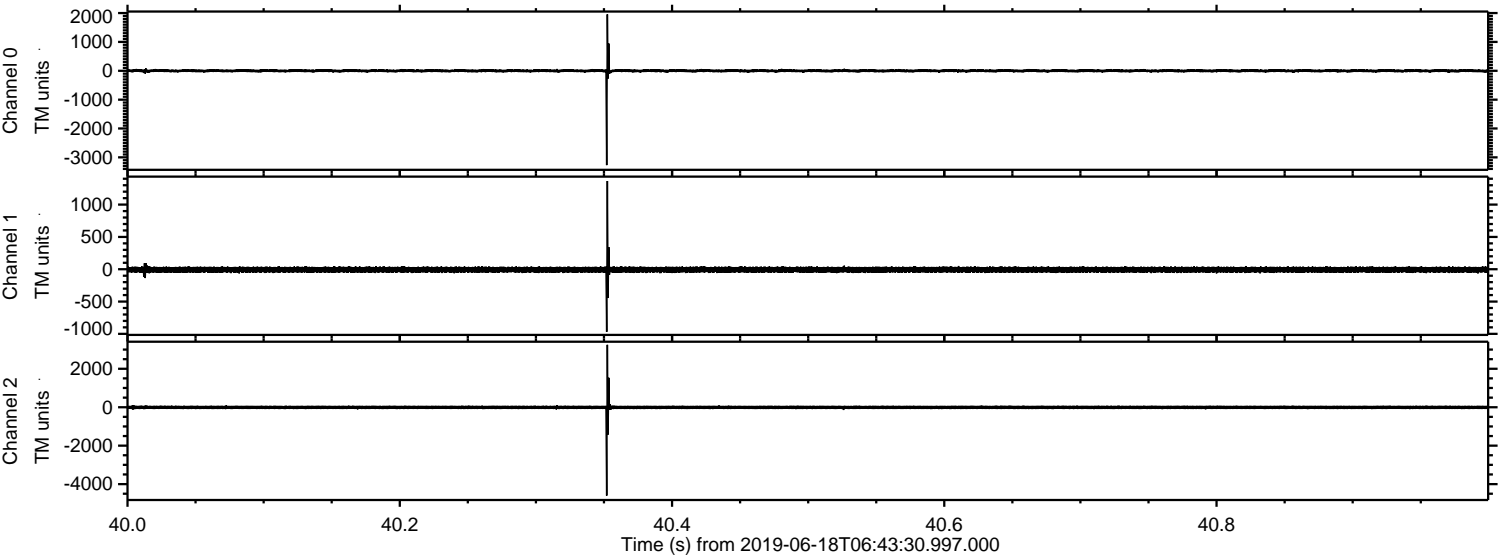


ELMAVAN 3D WAVEFORMS (Measured data sampled at 50 kHz) 51000 packets of 144 samples from 2019-06-18T06:43:30.997.000.

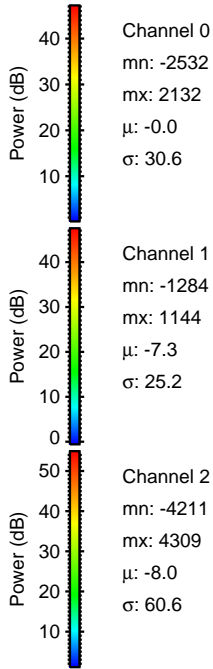
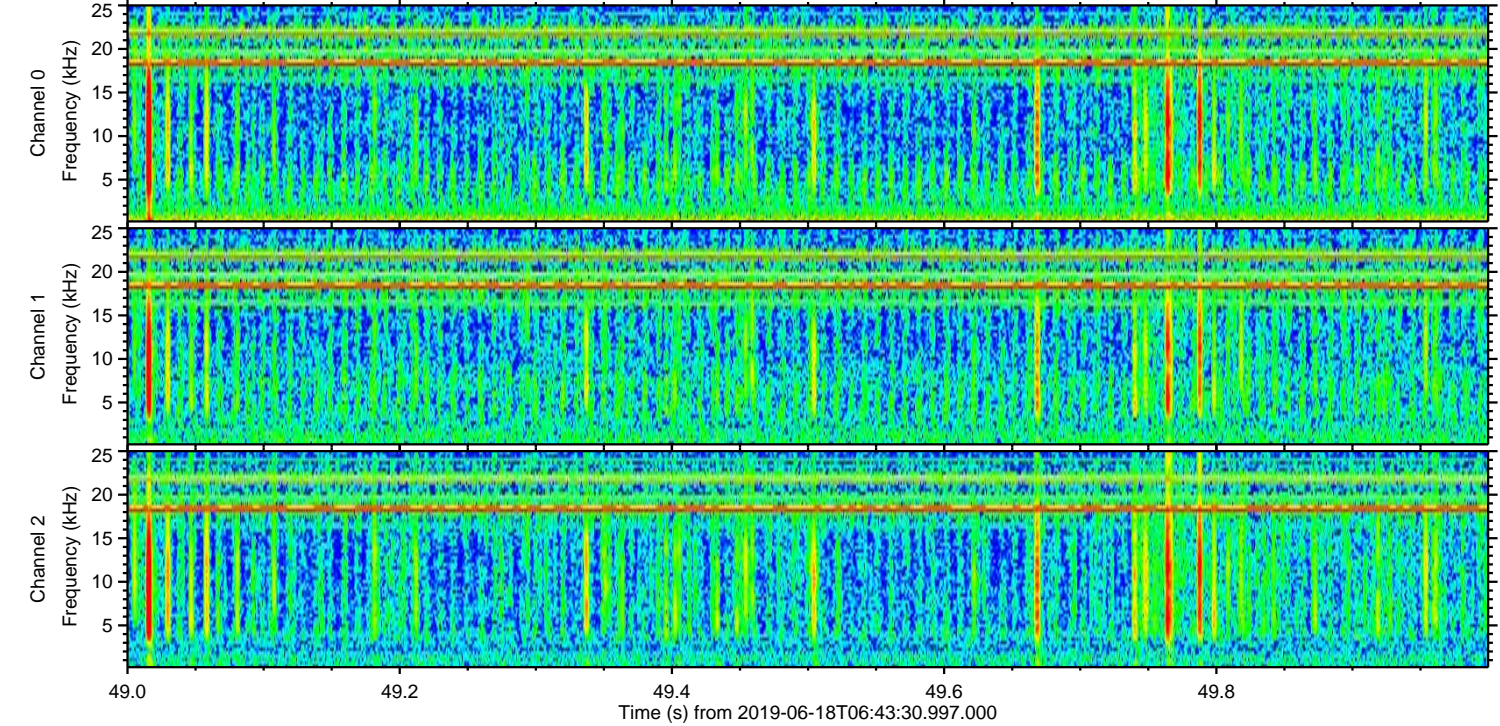
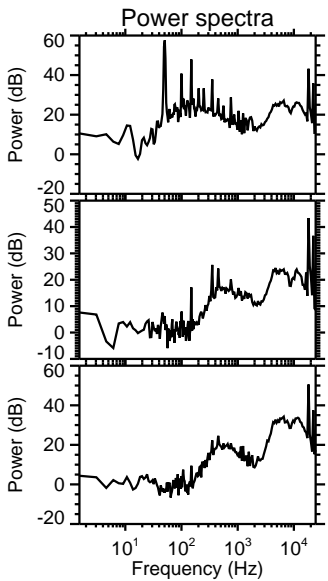
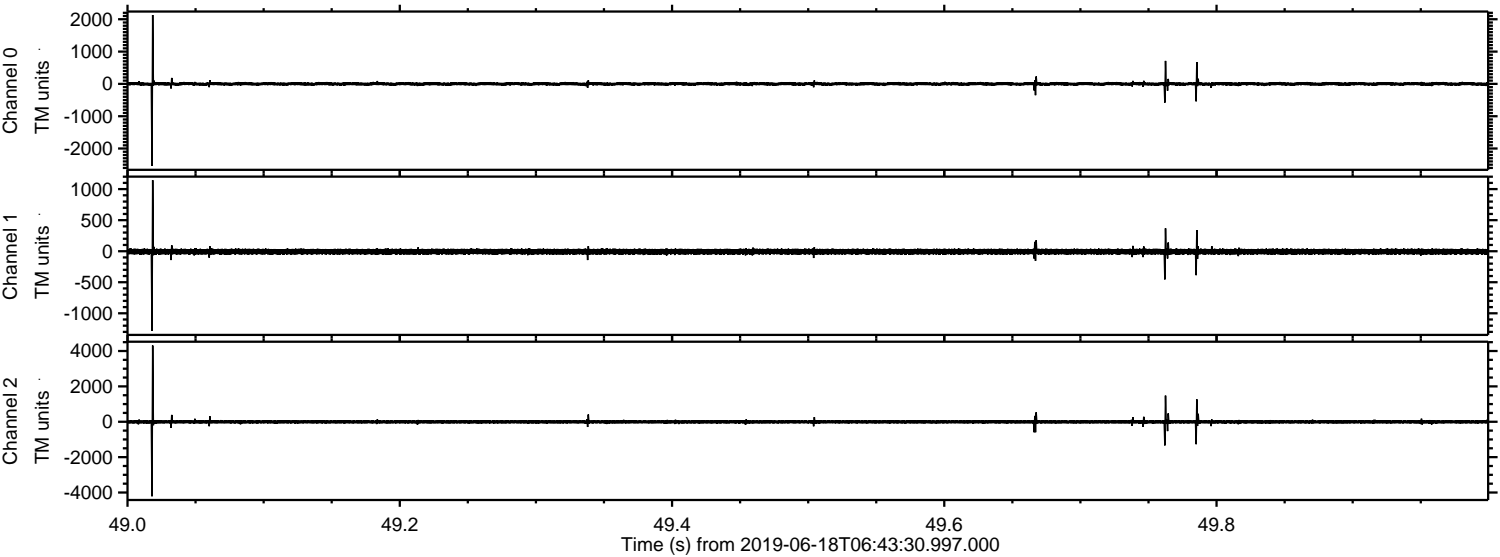
Processed Tue Jun 18 08:51:14 2019 by ELM ver.2012-10-06 from 001__elm20190618_064329__dat00.bin



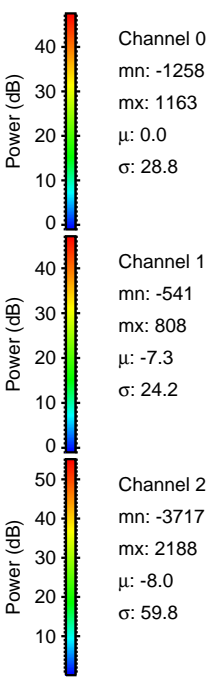
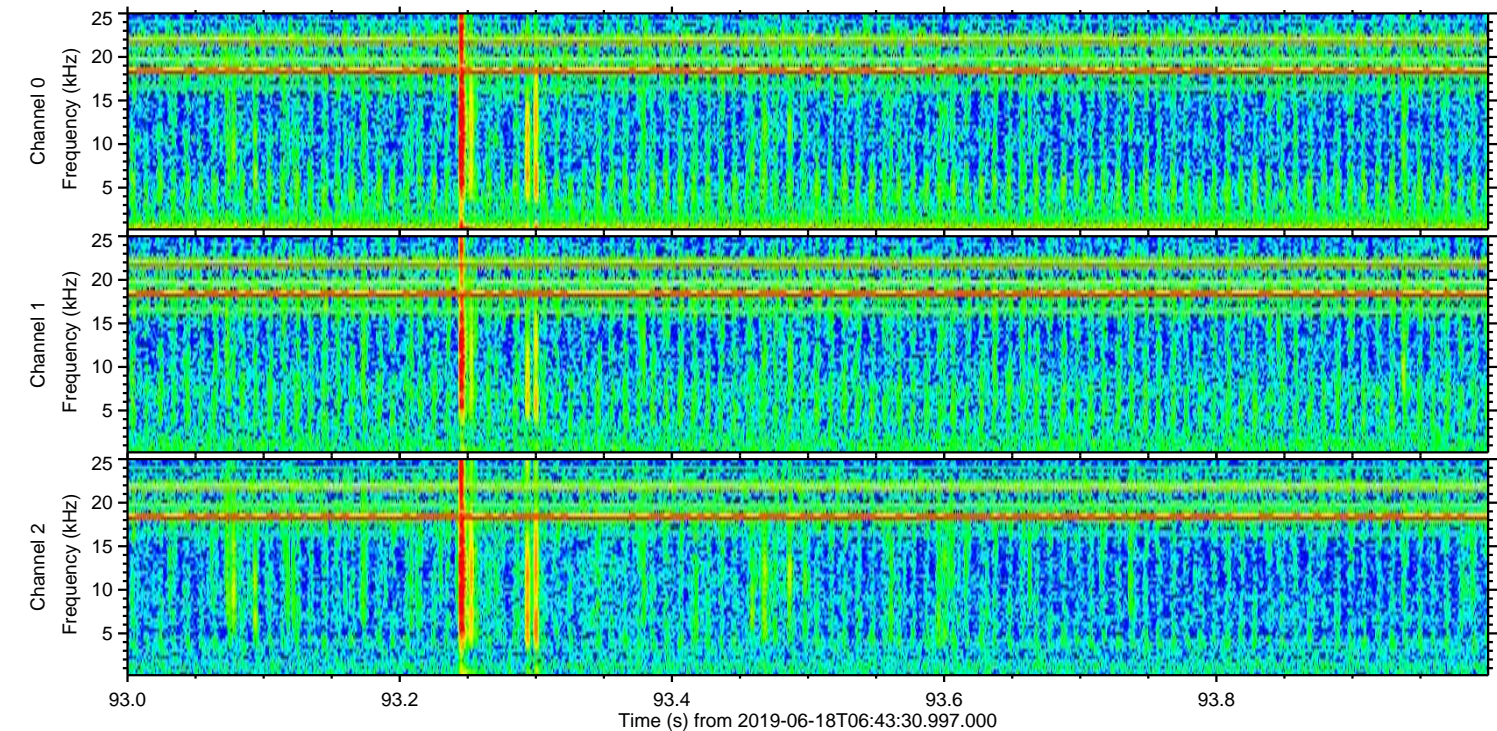
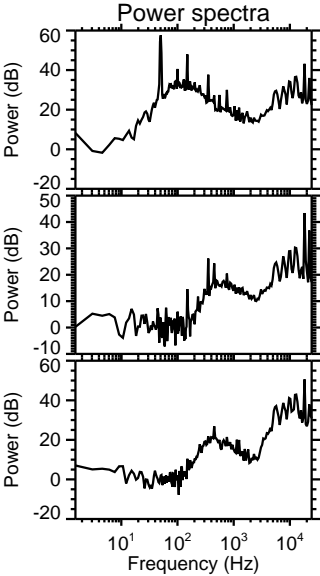
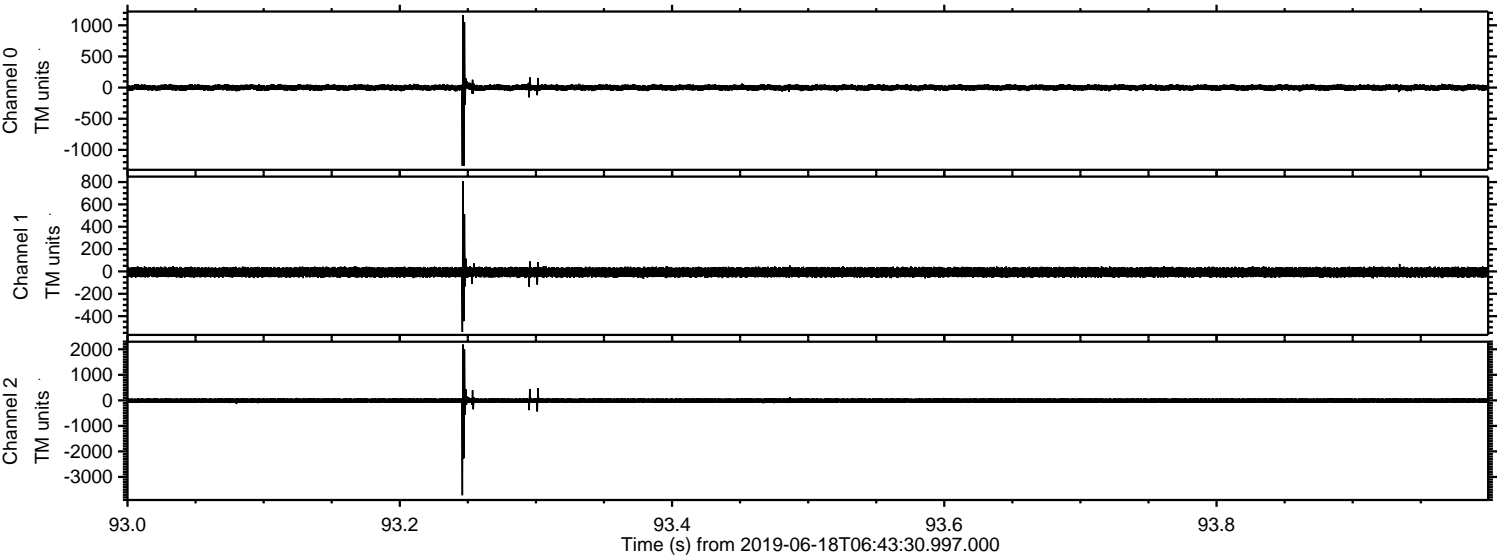
Processed Tue Jun 18 08:51:20 2019 by ELM ver.2012-10-06 from 001__elm20190618_064329__dat00.bin



Processed Tue Jun 18 08:51:20 2019 by ELM ver.2012-10-06 from 001__elm20190618_064329__dat00.bin



Processed Tue Jun 18 08:51:21 2019 by ELM ver.2012-10-06 from 001__elm20190618_064329__dat00.bin



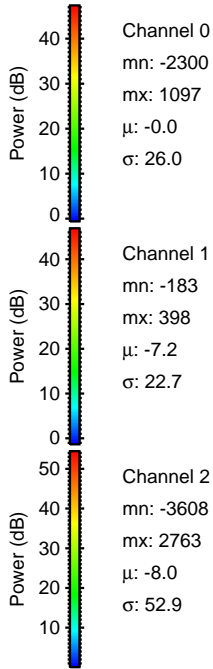
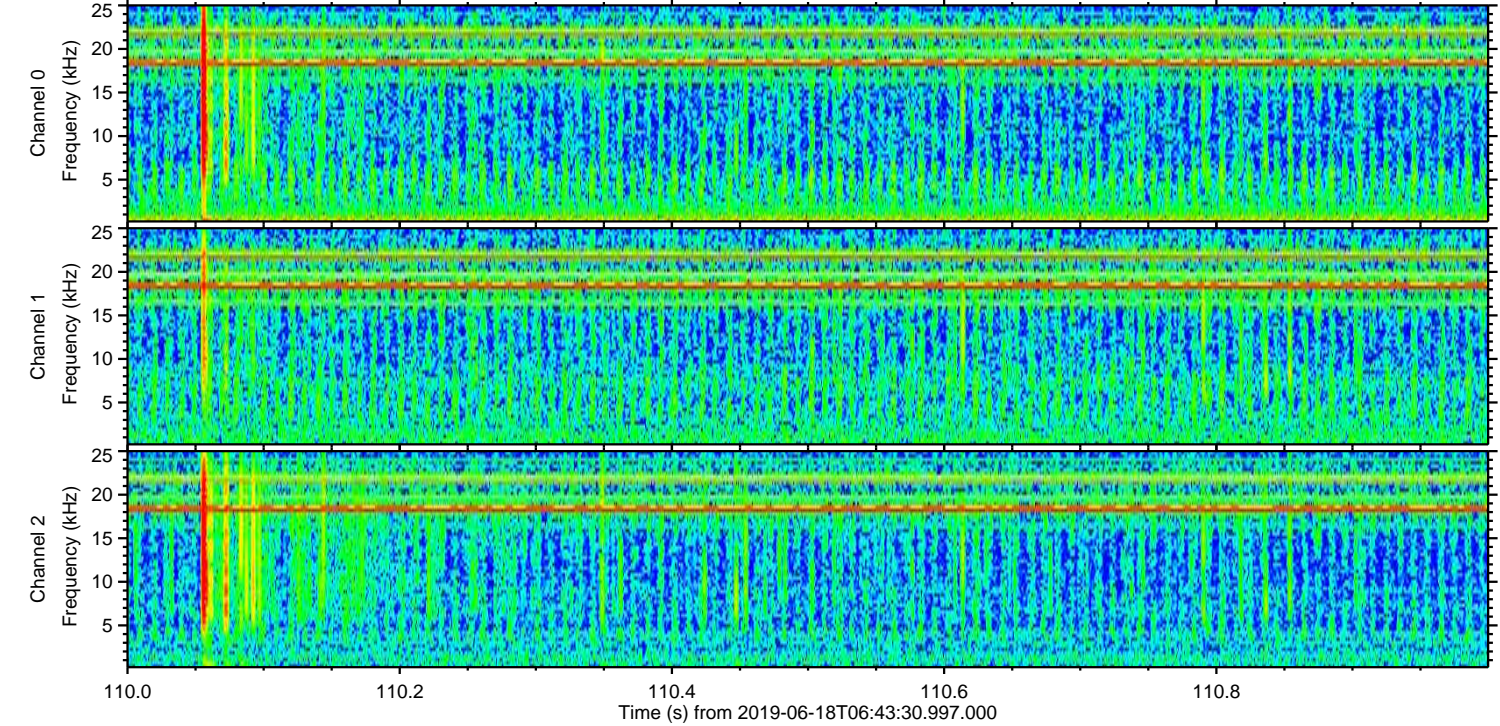
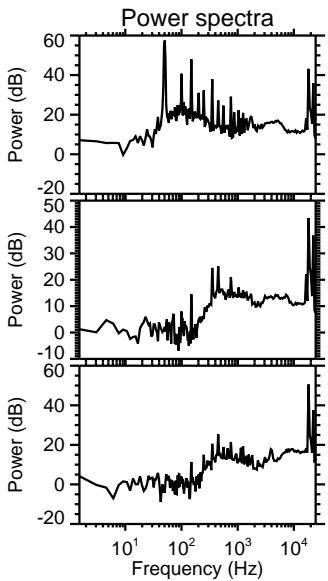
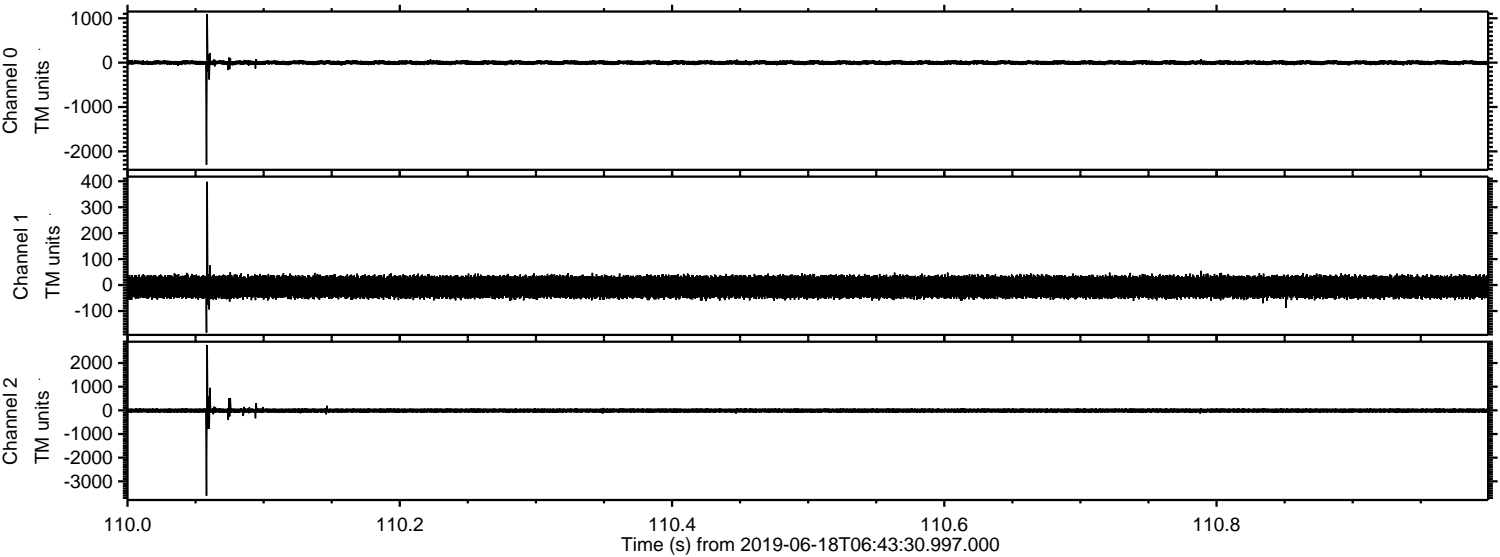
Channel 0
mn: -1258
mx: 1163
 μ : 0.0
 σ : 28.8

Channel 1
mn: -541
mx: 808
 μ : -7.3
 σ : 24.2

Channel 2
mn: -3717
mx: 2188
 μ : -8.0
 σ : 59.8

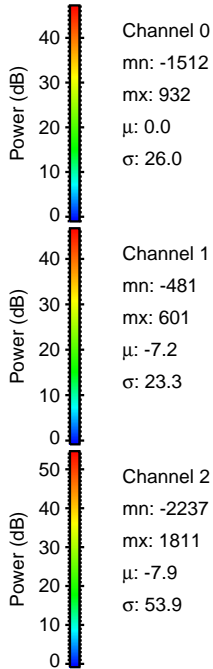
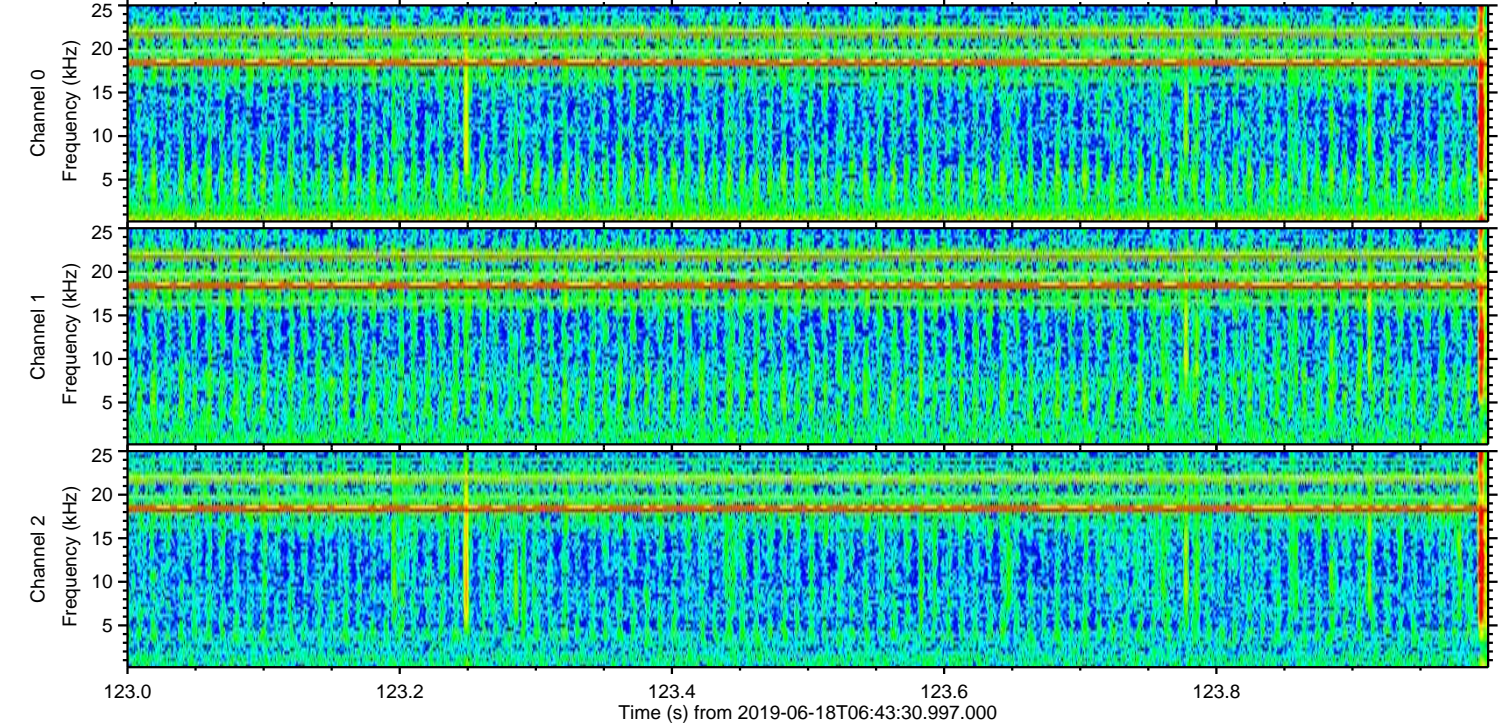
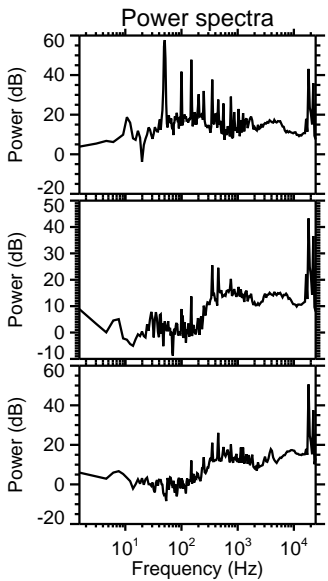
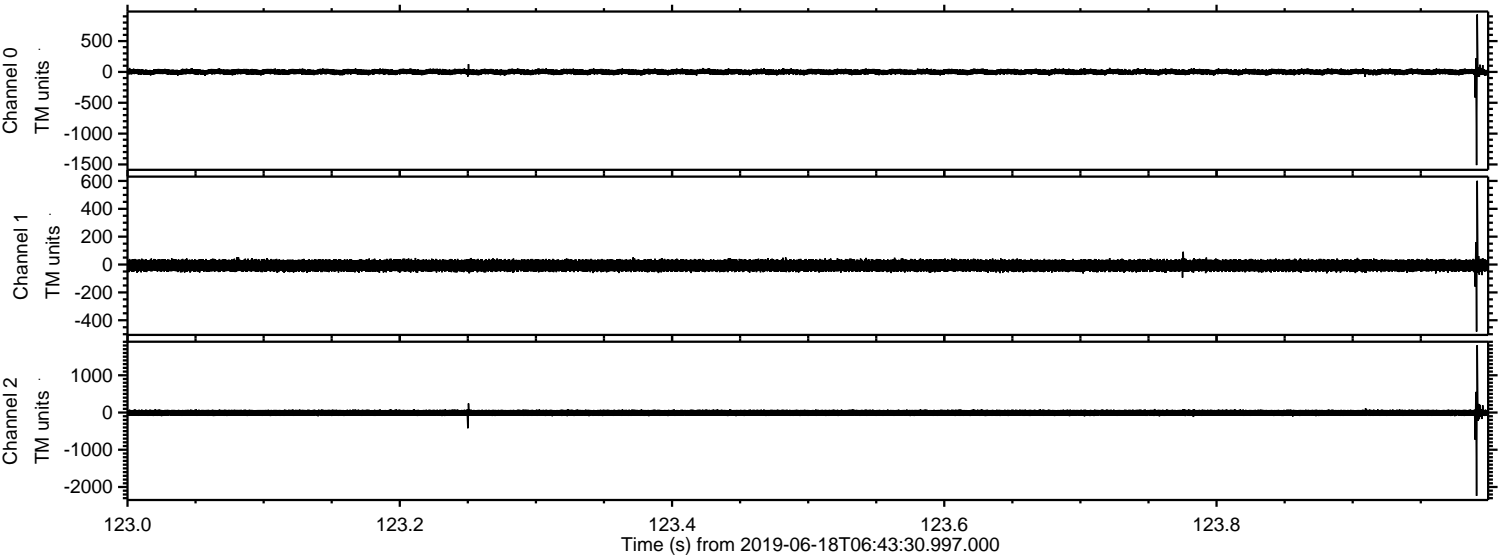
ELMAVAN 3D WAVEFORMS (Measured data sampled at 50 kHz) 51000 packets of 144 samples from 2019-06-18T06:43:30.997.000. Part 111/147

Processed Tue Jun 18 08:51:22 2019 by ELM ver.2012-10-06 from 001__elm20190618_064329__dat00.bin

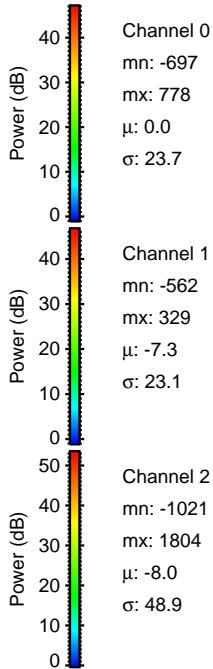
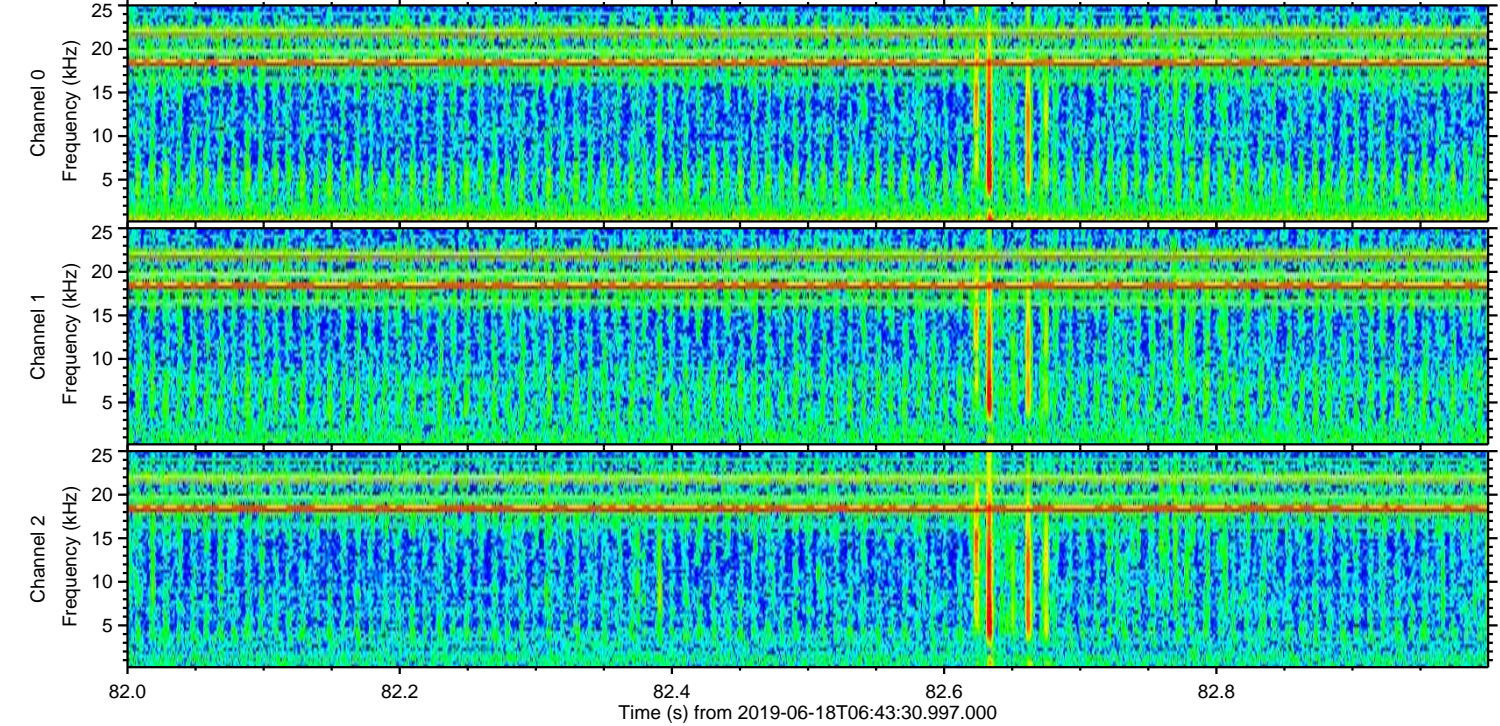
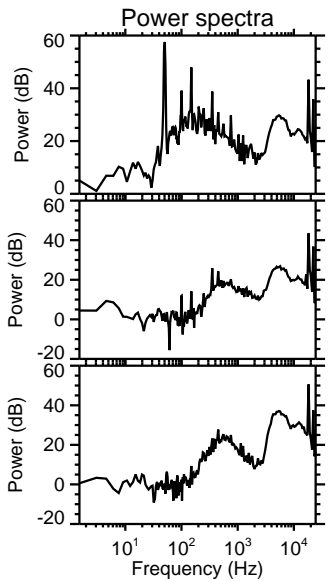
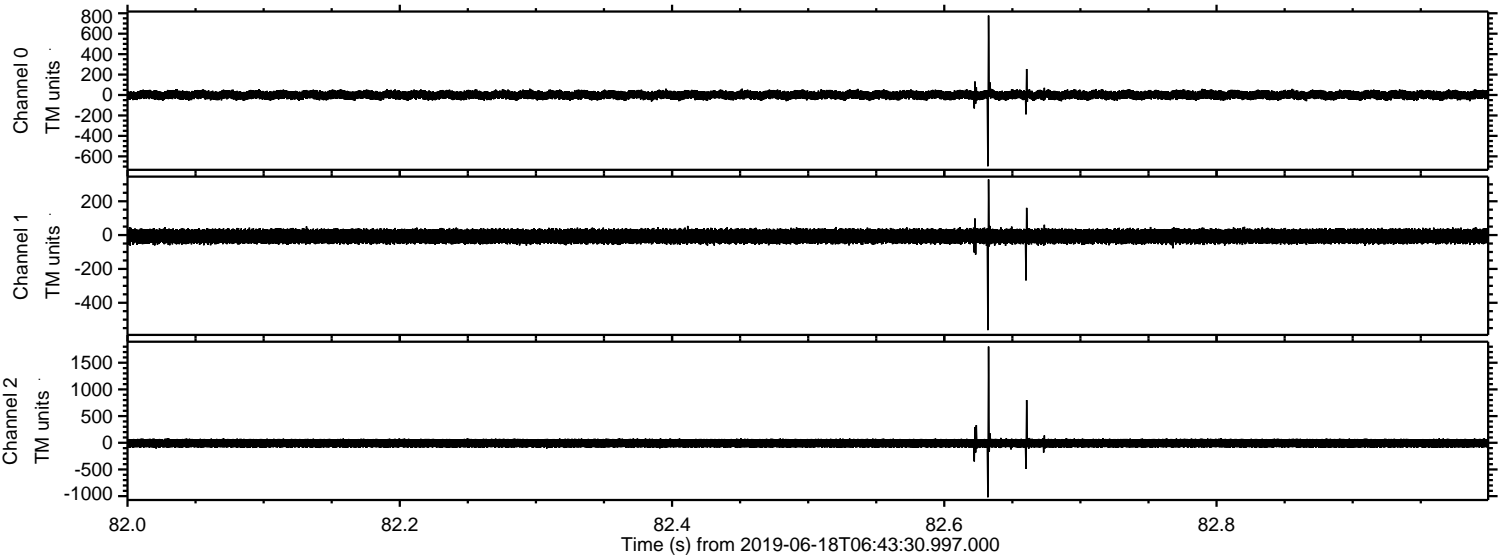


ELMAVAN 3D WAVEFORMS (Measured data sampled at 50 kHz) 51000 packets of 144 samples from 2019-06-18T06:43:30.997.000. Part 124/147

Processed Tue Jun 18 08:51:22 2019 by ELM ver.2012-10-06 from 001__elm20190618_064329__dat00.bin

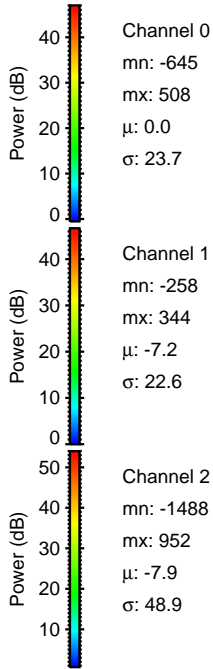
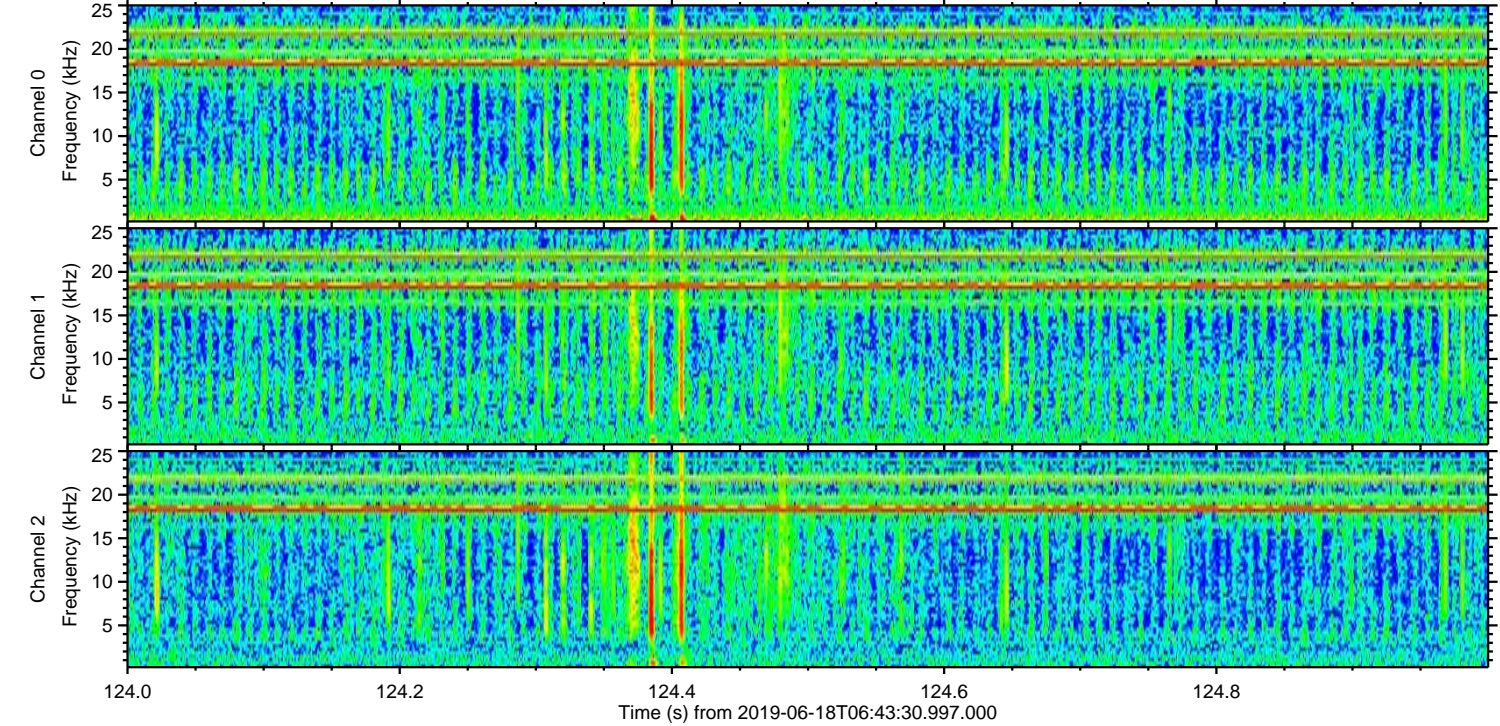
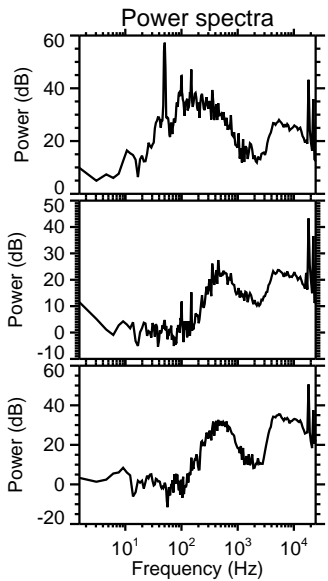
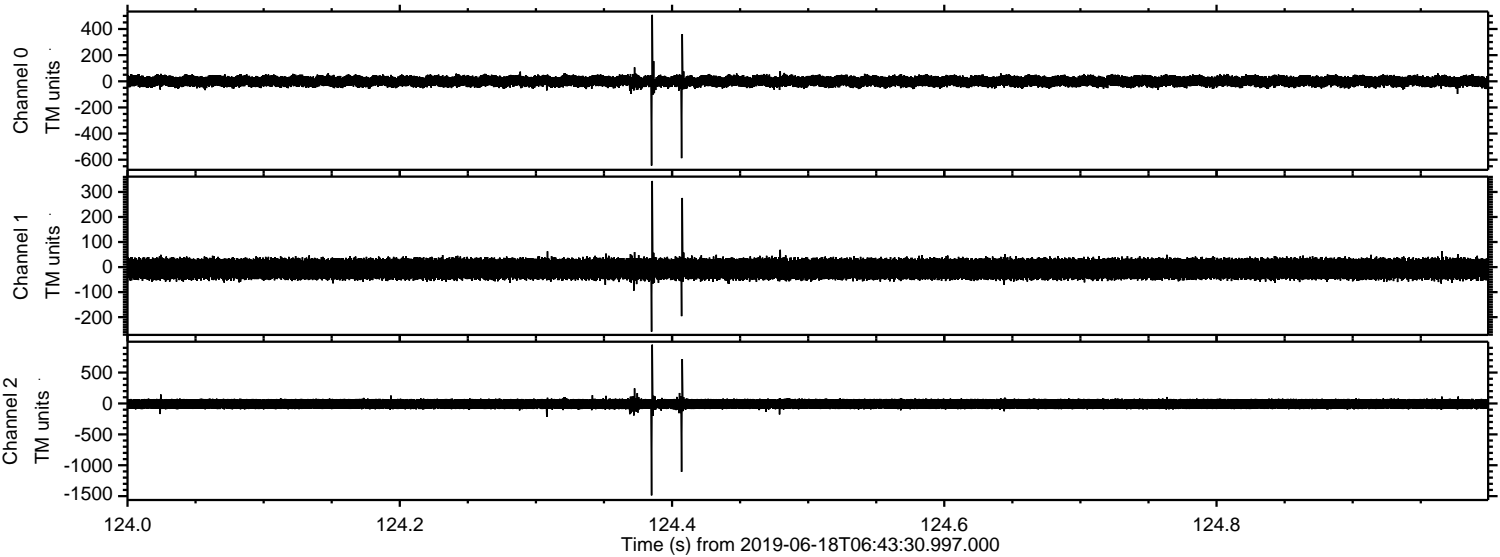


Processed Tue Jun 18 08:51:23 2019 by ELM ver.2012-10-06 from 001__elm20190618_064329__dat00.bin



ELMAVAN 3D WAVEFORMS (Measured data sampled at 50 kHz) 51000 packets of 144 samples from 2019-06-18T06:43:30.997.000. Part 125/147

Processed Tue Jun 18 08:51:23 2019 by ELM ver.2012-10-06 from 001__elm20190618_064329__dat00.bin

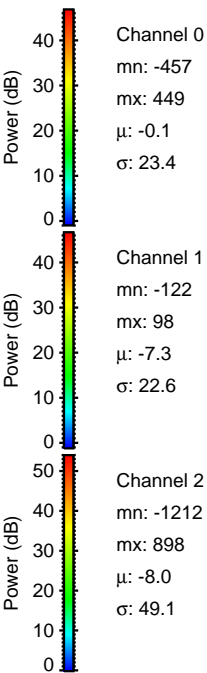
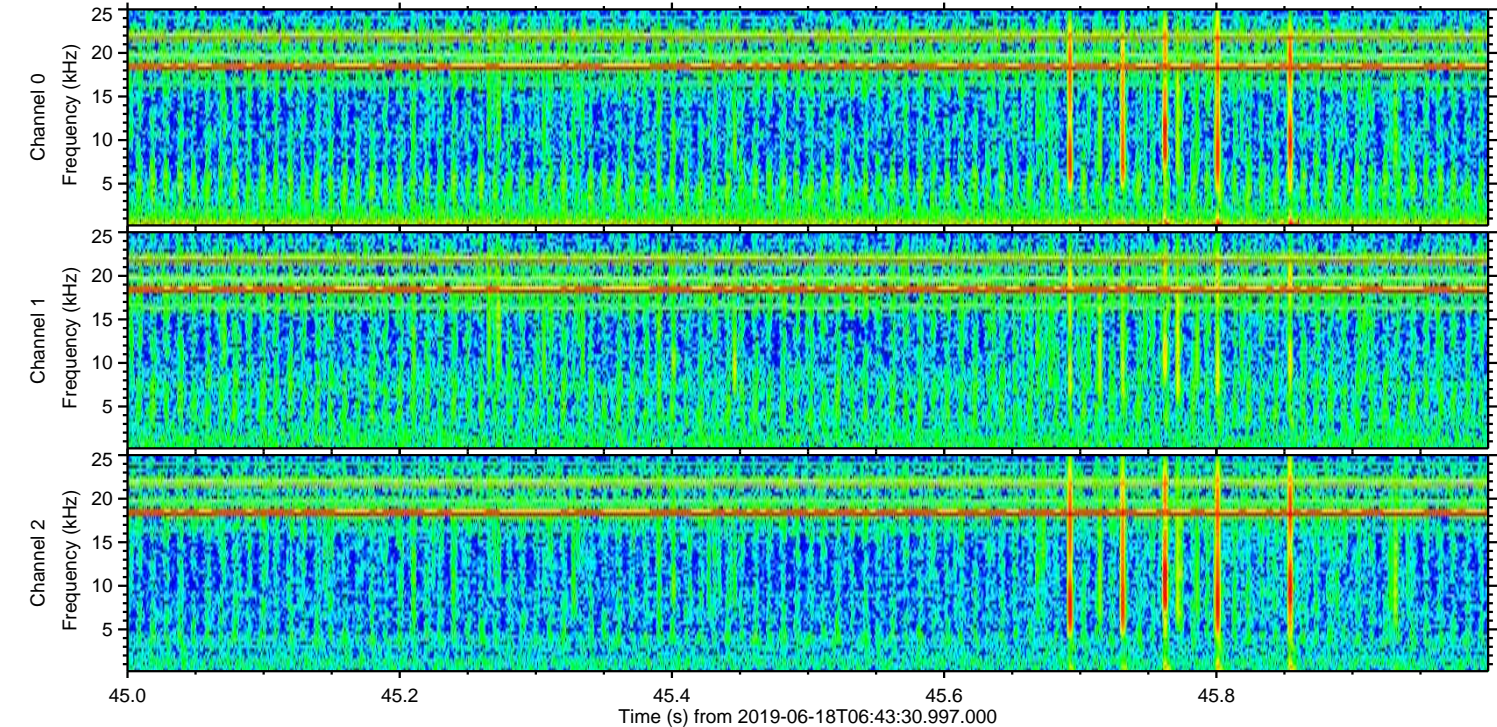
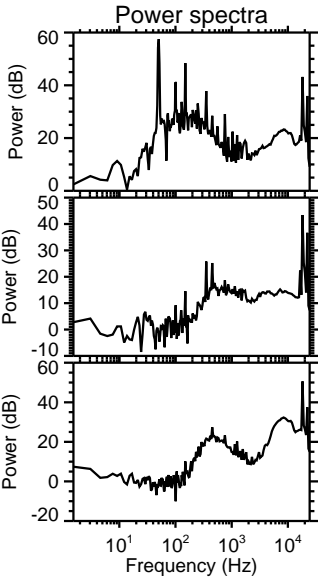
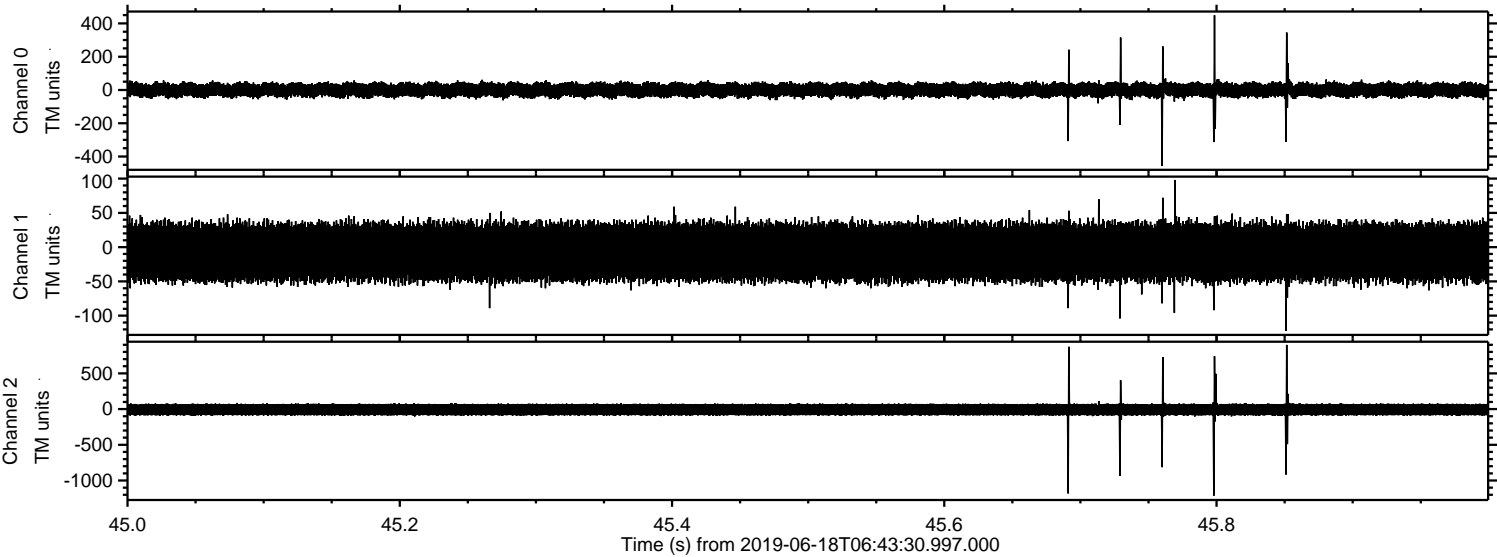


Channel 0
mn: -645
mx: 508
 μ : 0.0
 σ : 23.7

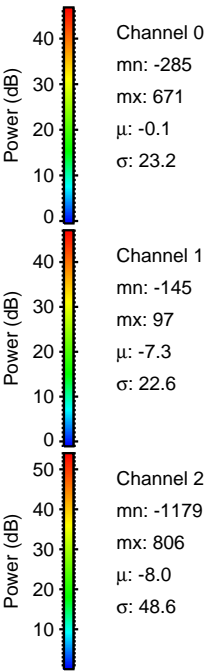
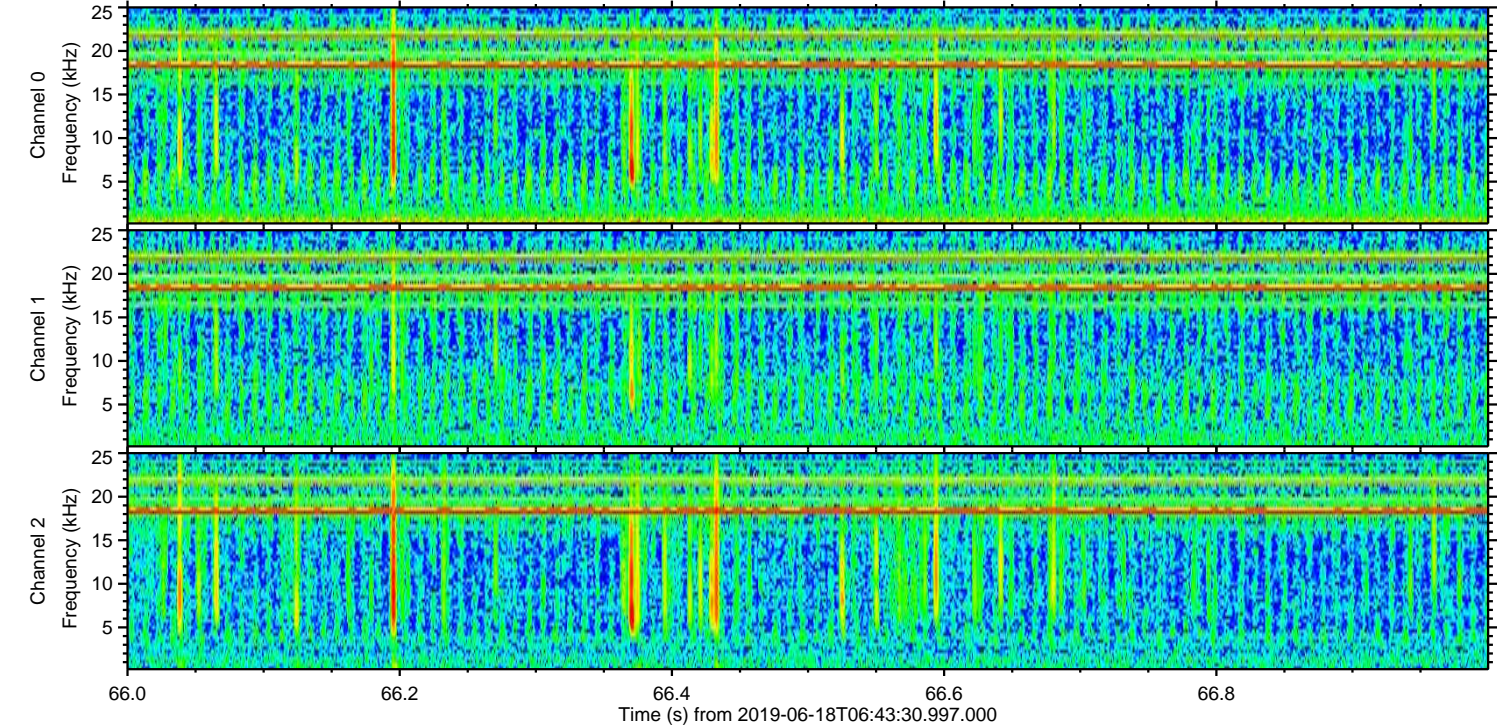
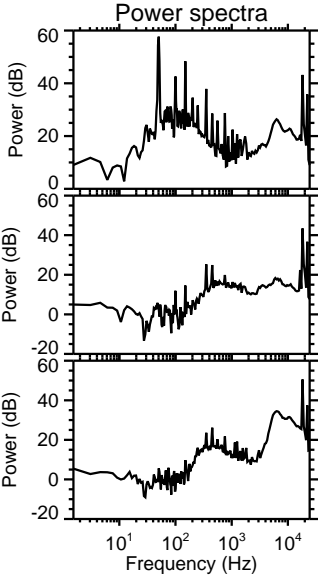
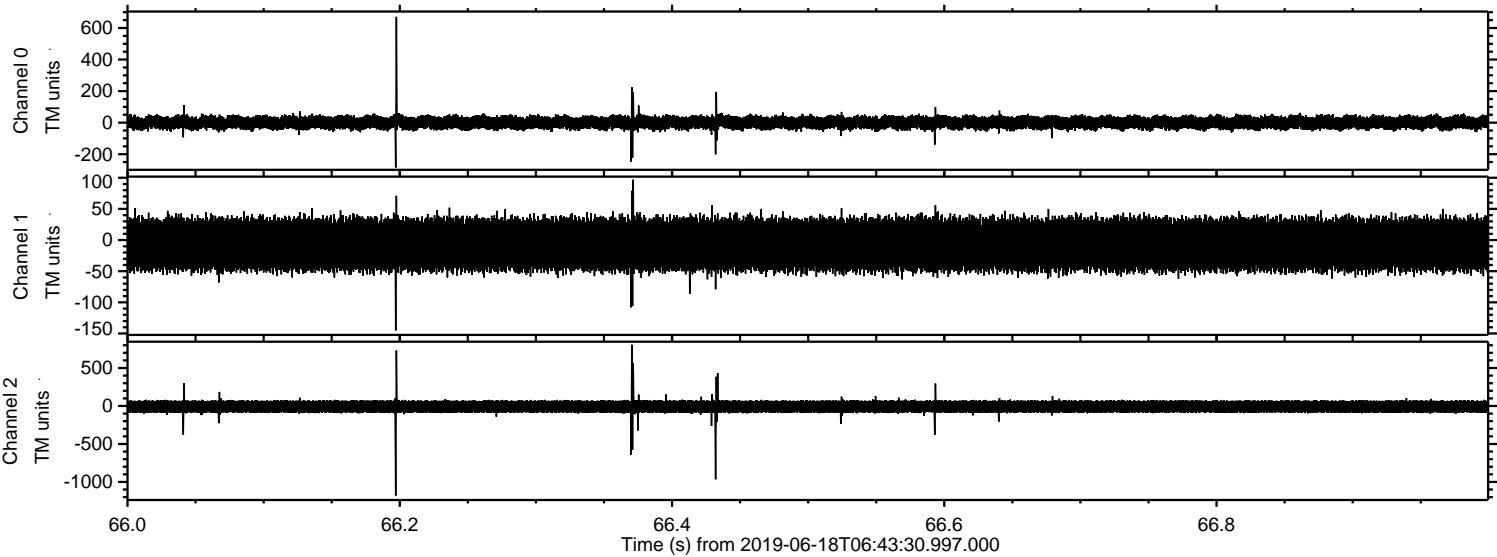
Channel 1
mn: -258
mx: 344
 μ : -7.2
 σ : 22.6

Channel 2
mn: -1488
mx: 952
 μ : -7.9
 σ : 48.9

Processed Tue Jun 18 08:51:24 2019 by ELM ver.2012-10-06 from 001__elm20190618_064329__dat00.bin



Processed Tue Jun 18 08:51:25 2019 by ELM ver.2012-10-06 from 001__elm20190618_064329__dat00.bin



Processed Tue Jun 18 08:51:25 2019 by ELM ver.2012-10-06 from 001__elm20190618_064329__dat00.bin

