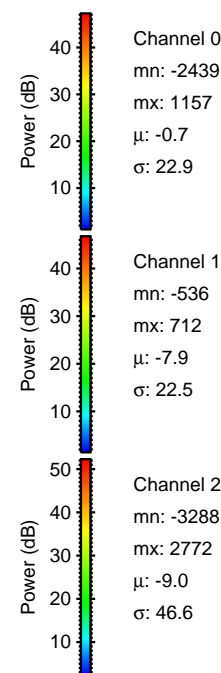
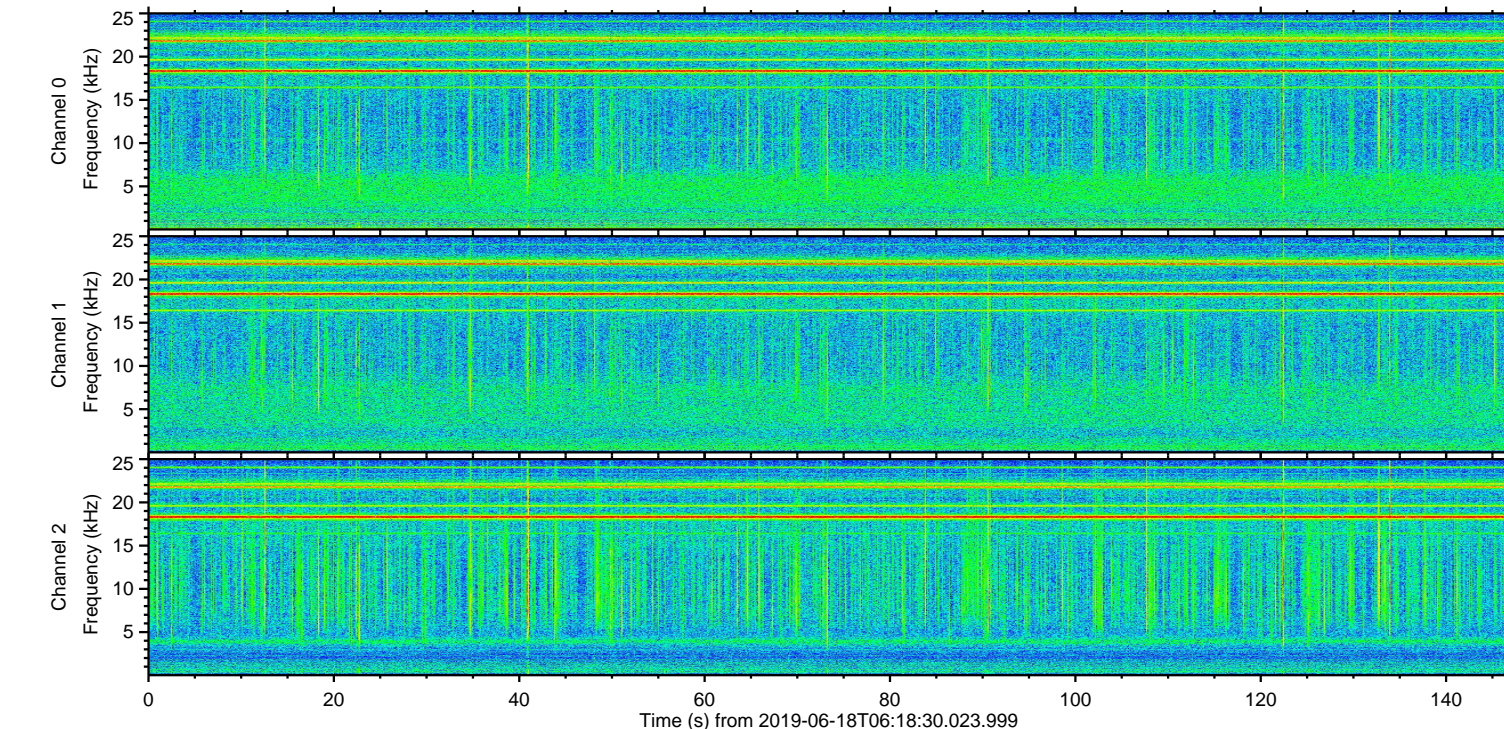
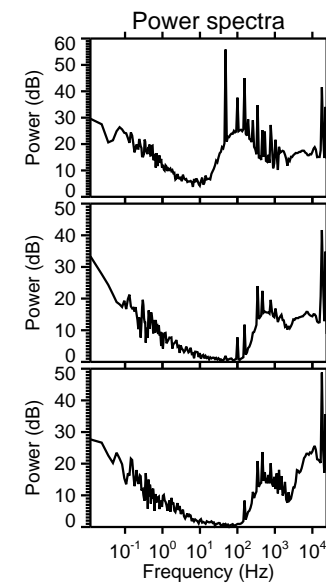
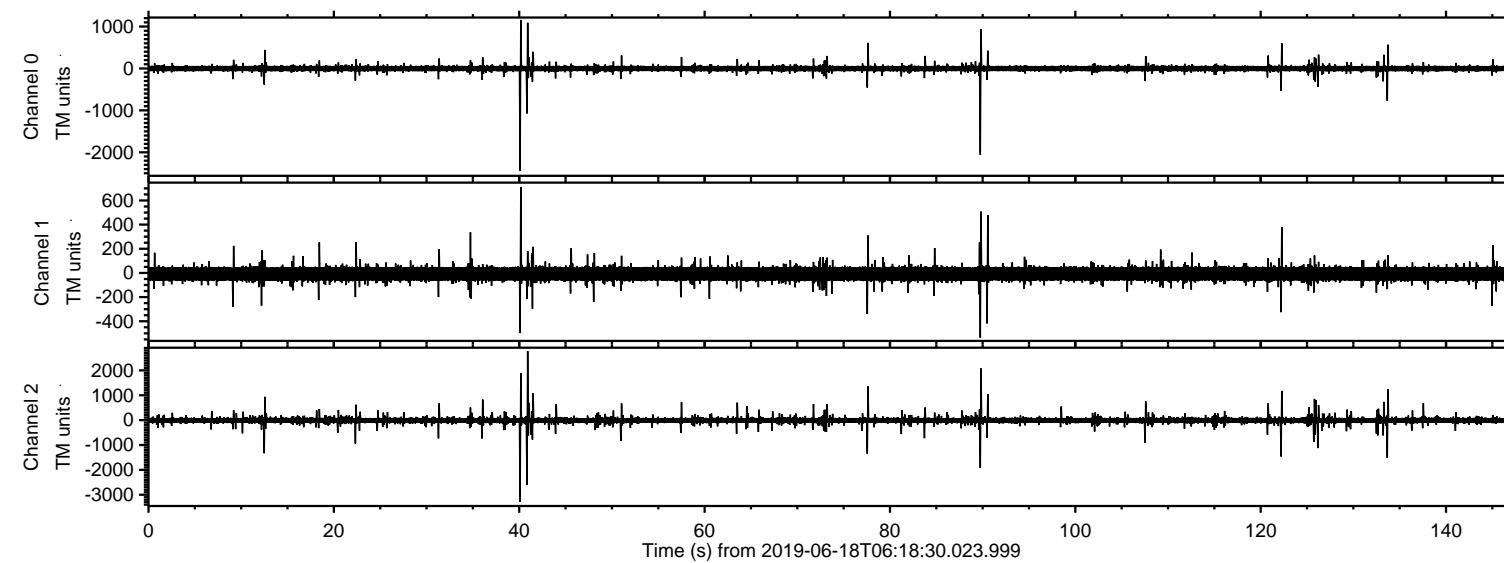


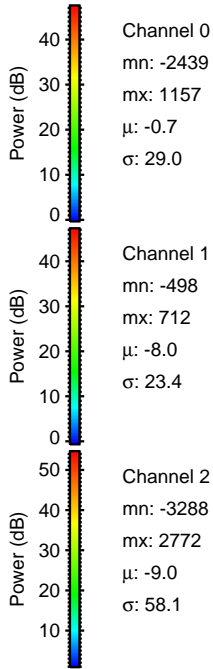
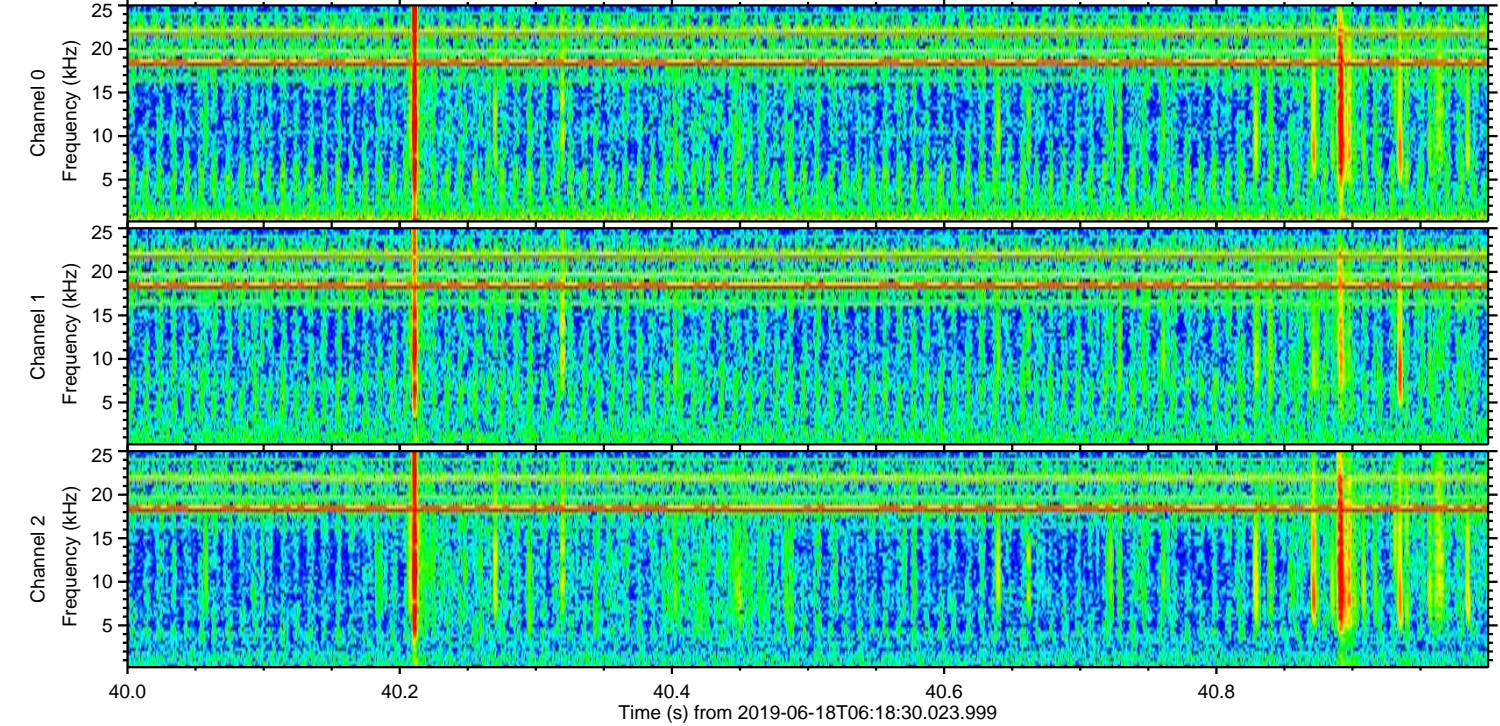
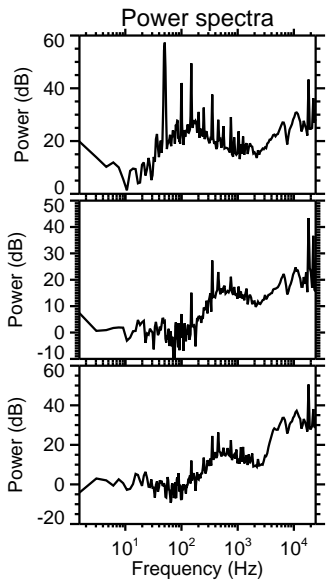
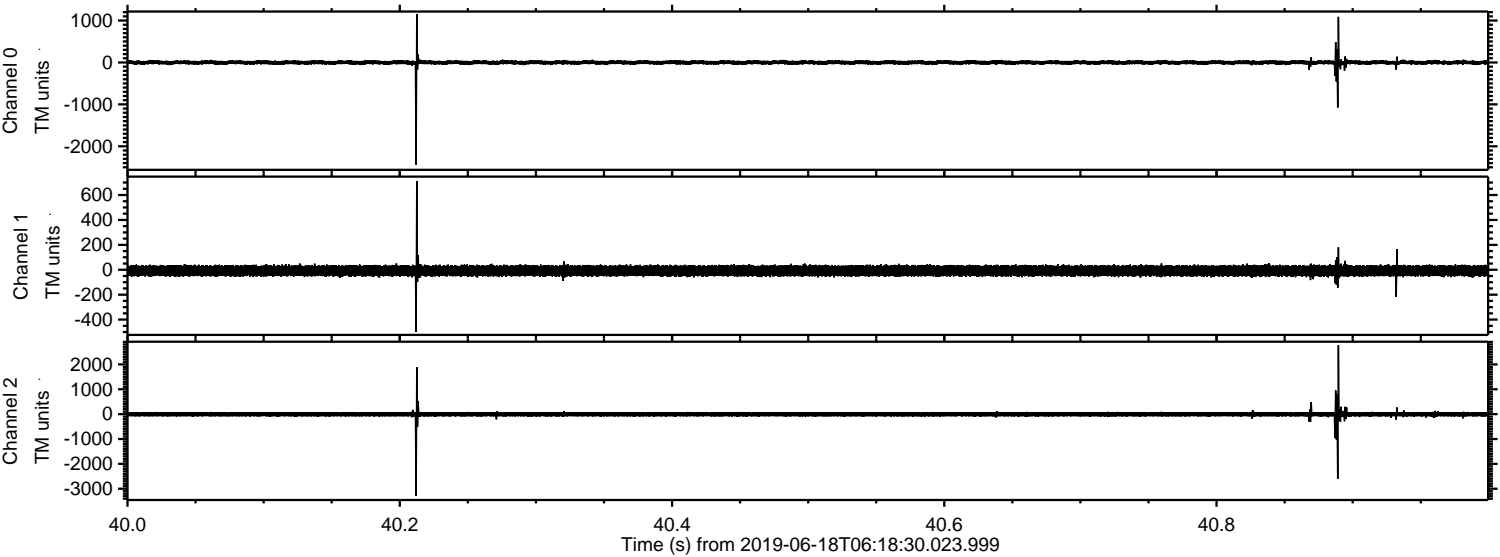
# ELMAVAN 3D WAVEFORMS (Measured data sampled at 50 kHz) 51000 packets of 144 samples from 2019-06-18T06:18:30.023.999.

Processed Tue Jun 18 08:26:00 2019 by ELM ver.2012-10-06 from 001\_\_elm20190618\_061829\_\_dat00.bin



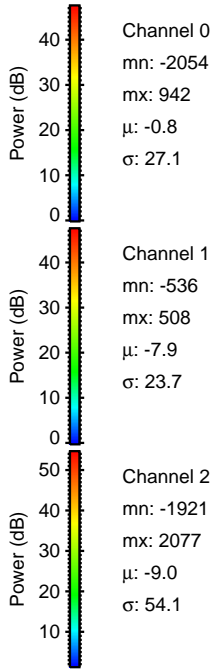
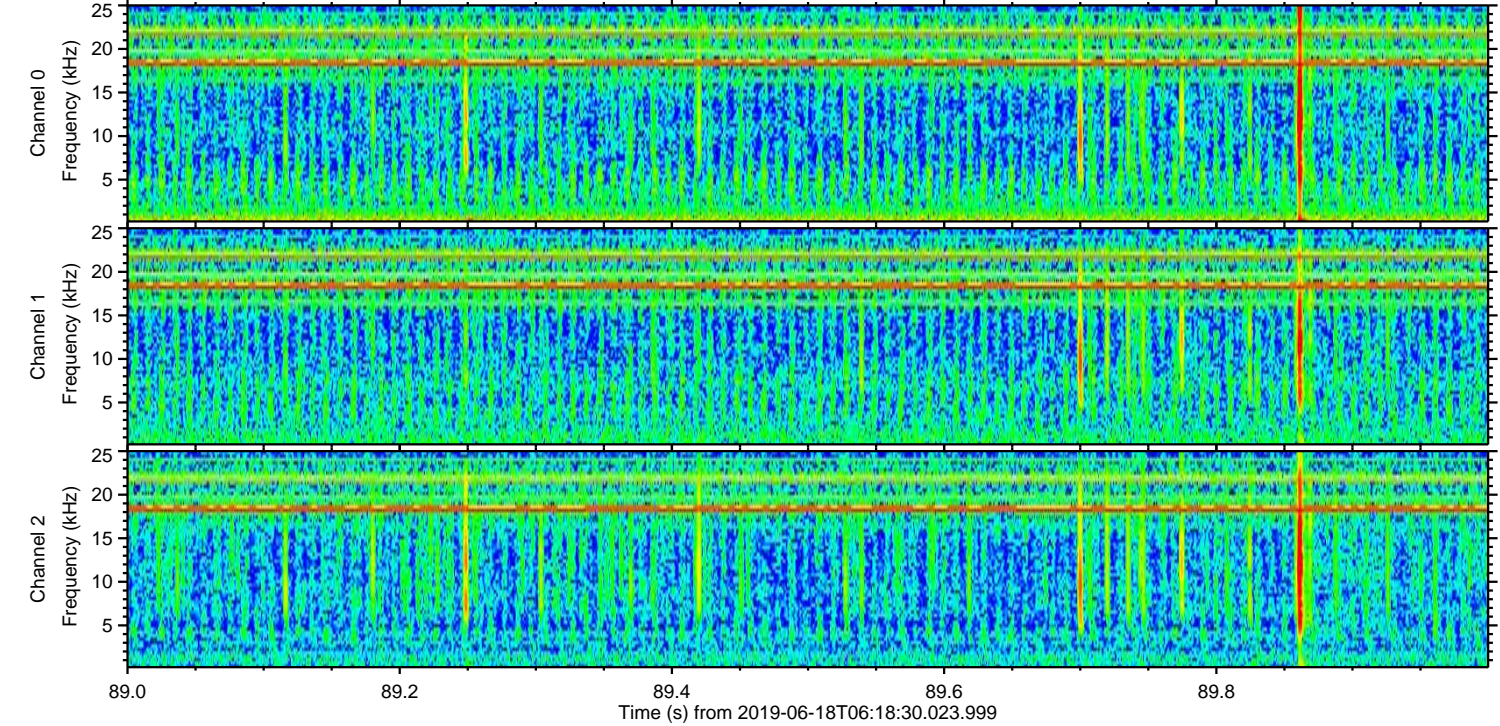
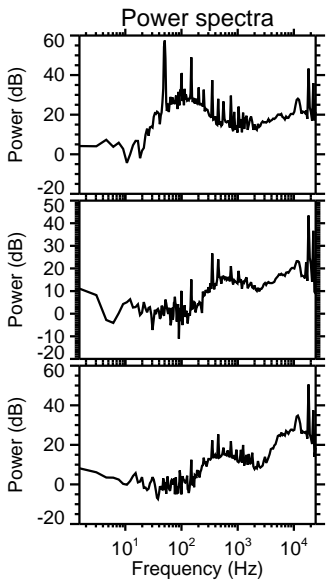
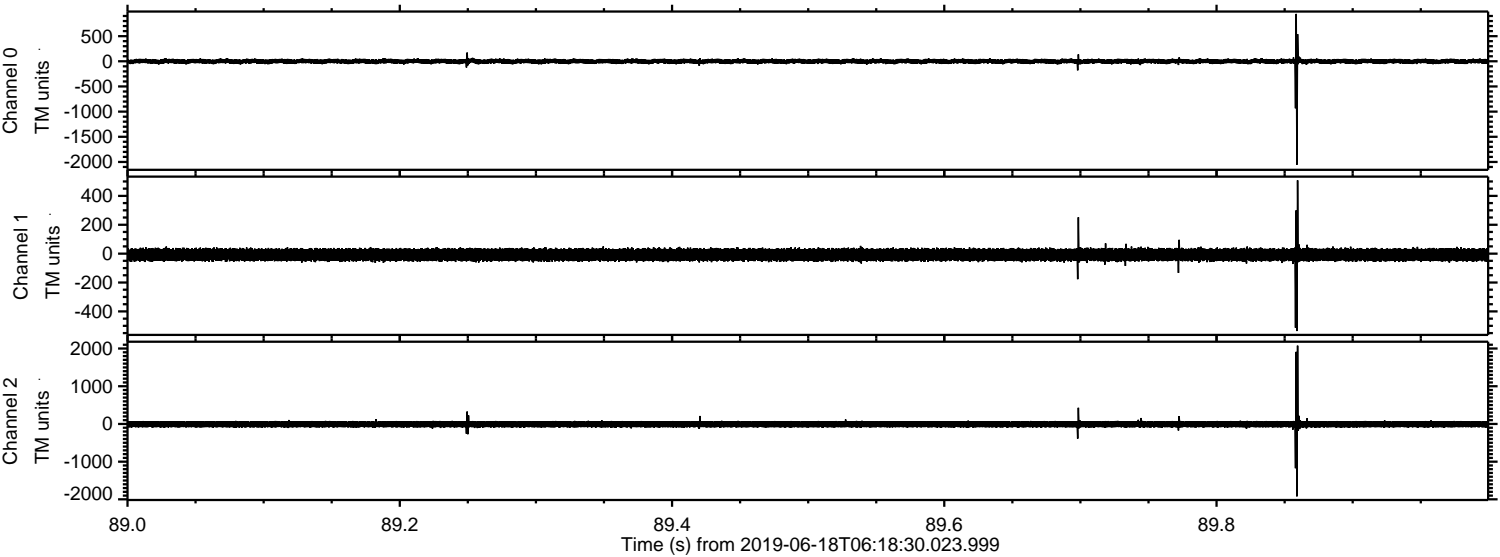


Processed Tue Jun 18 08:26:06 2019 by ELM ver.2012-10-06 from 001\_\_elm20190618\_061829\_\_dat00.bin





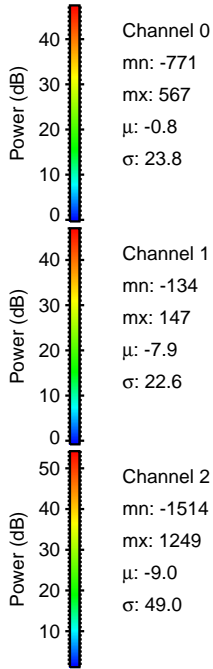
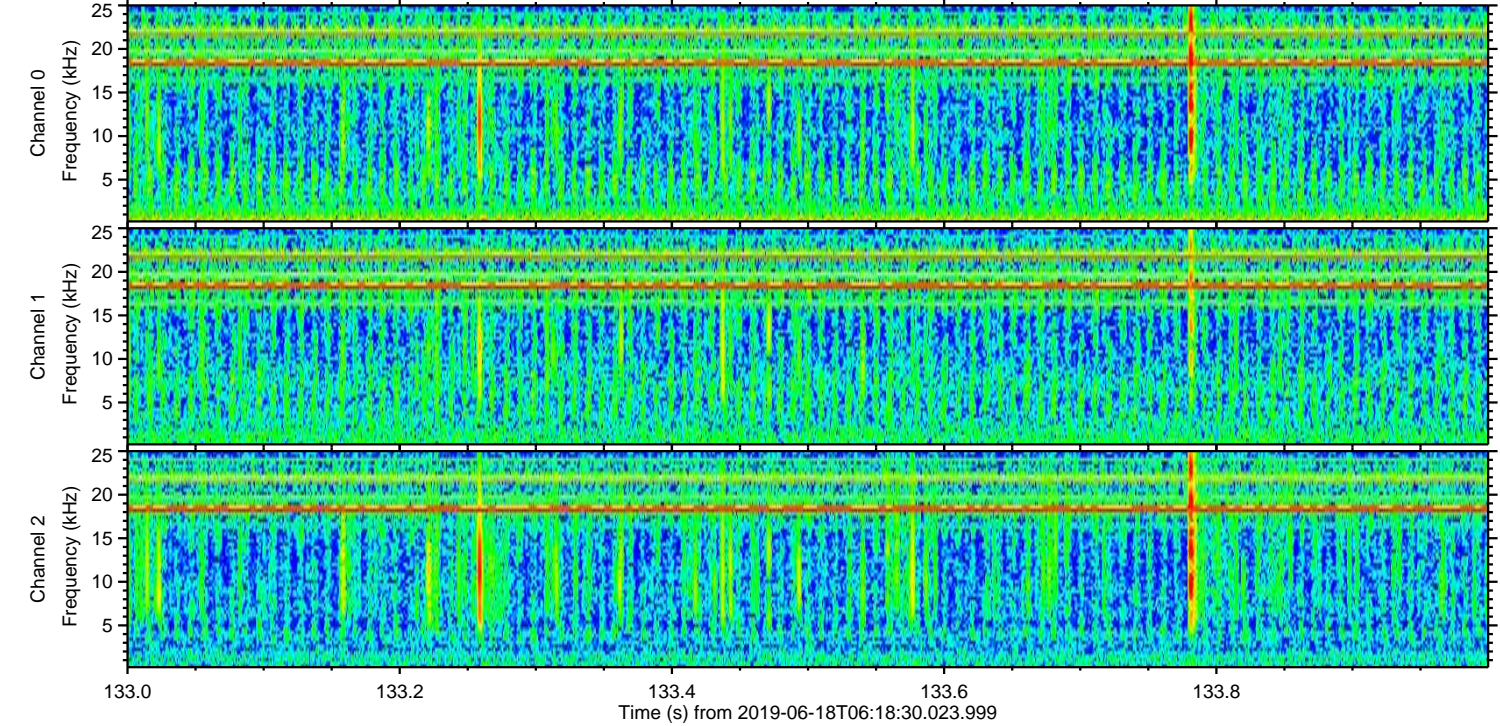
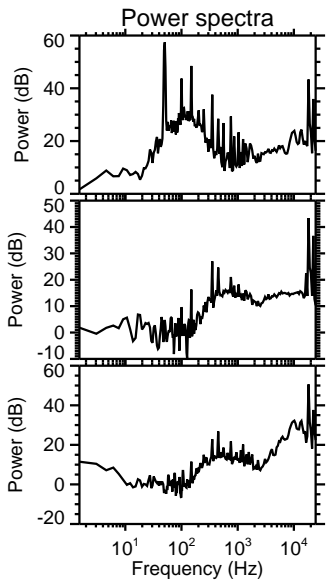
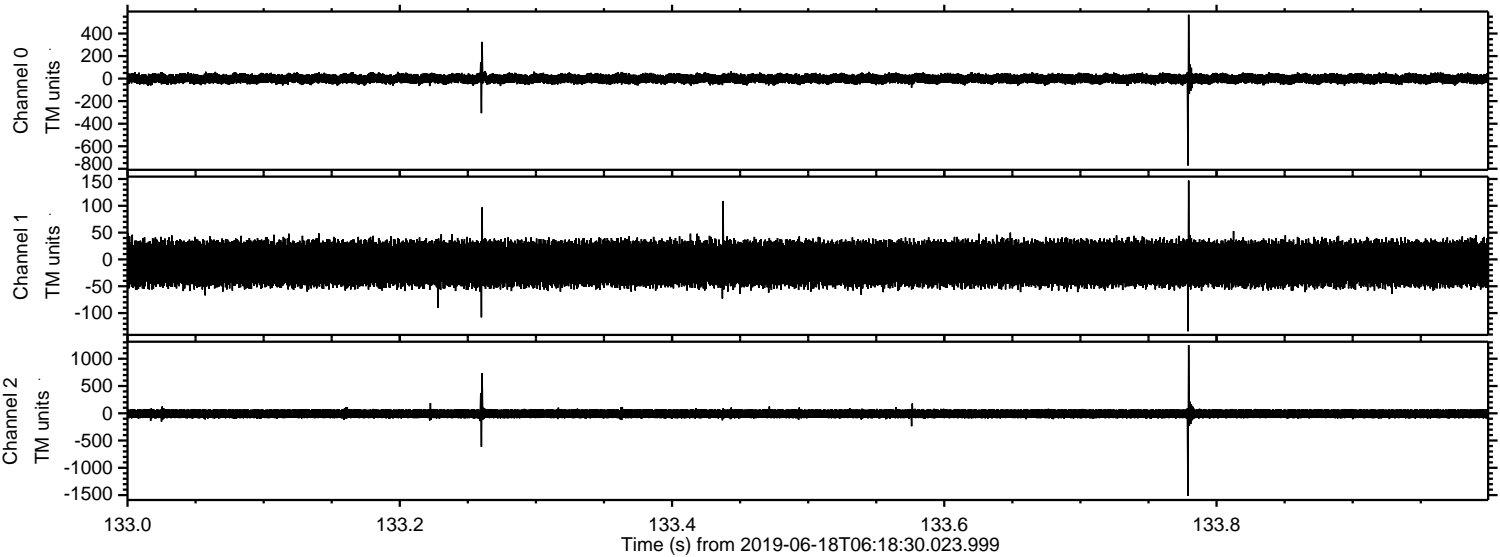
Processed Tue Jun 18 08:26:06 2019 by ELM ver.2012-10-06 from 001\_\_elm20190618\_061829\_\_dat00.bin





ELMAVAN 3D WAVEFORMS (Measured data sampled at 50 kHz) 51000 packets of 144 samples from 2019-06-18T06:18:30.023.999. Part 134/147

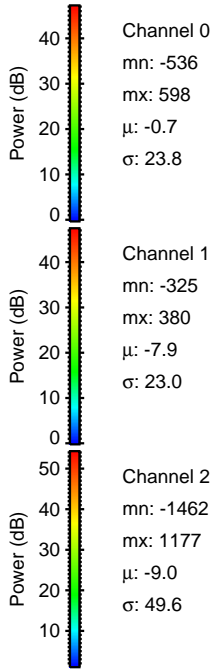
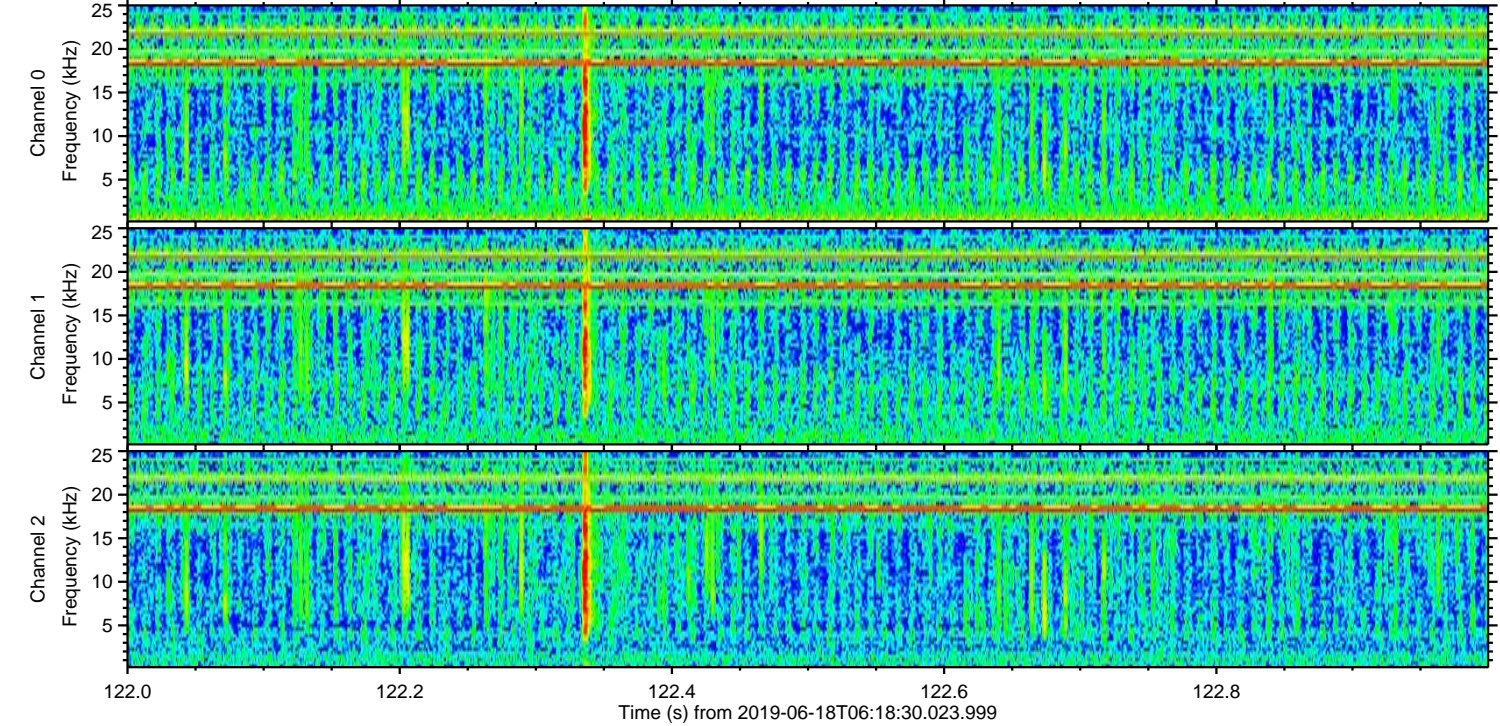
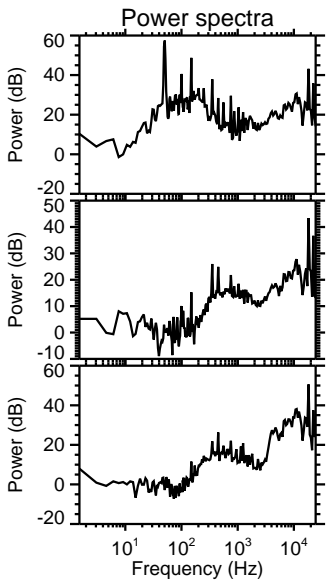
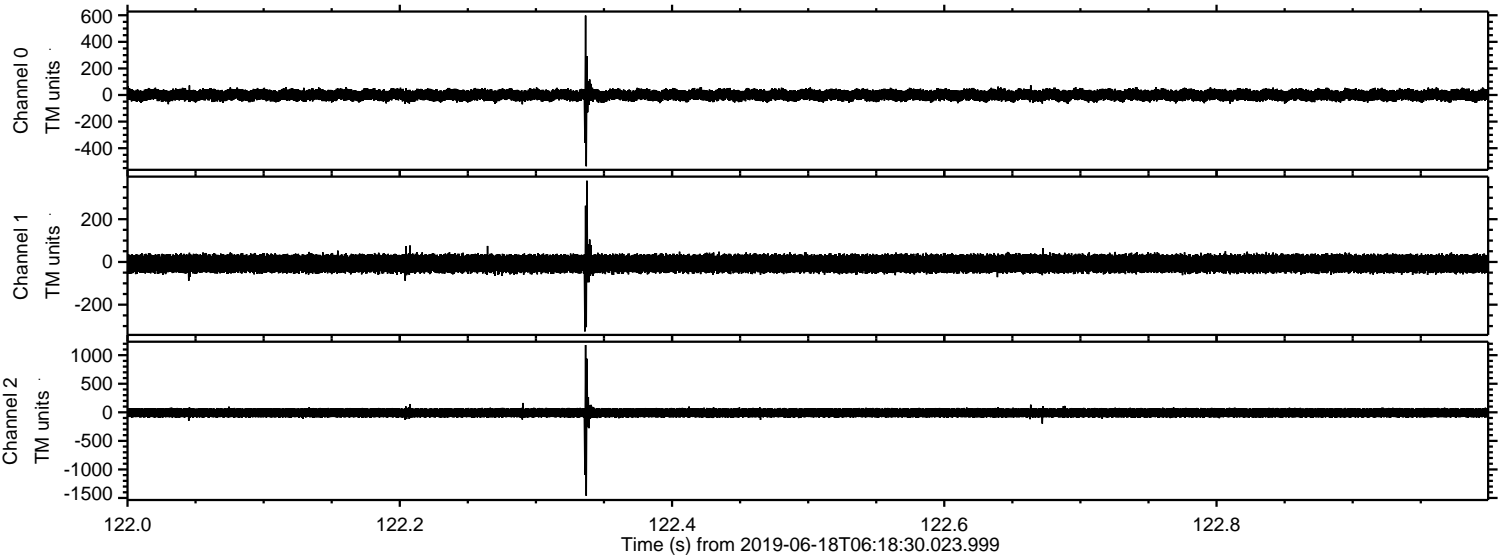
Processed Tue Jun 18 08:26:07 2019 by ELM ver.2012-10-06 from 001\_\_elm20190618\_061829\_\_dat00.bin





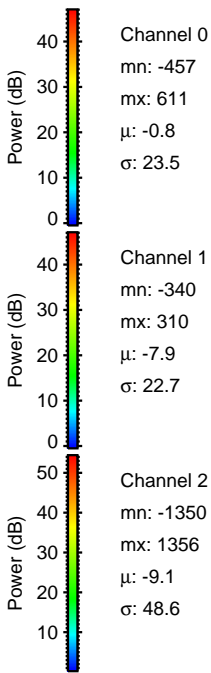
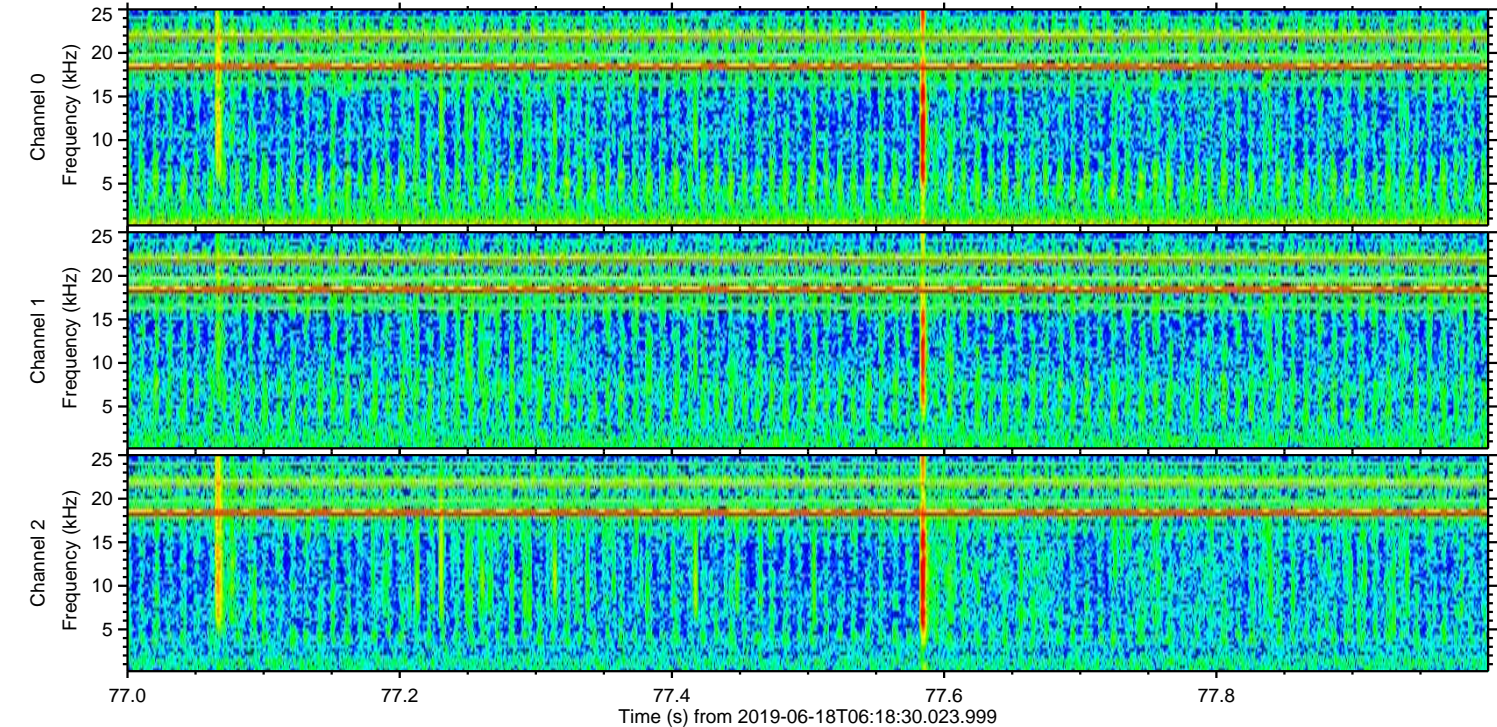
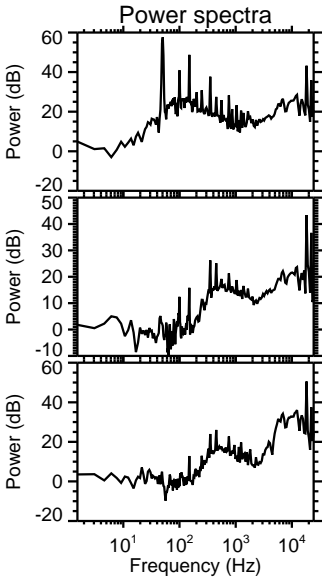
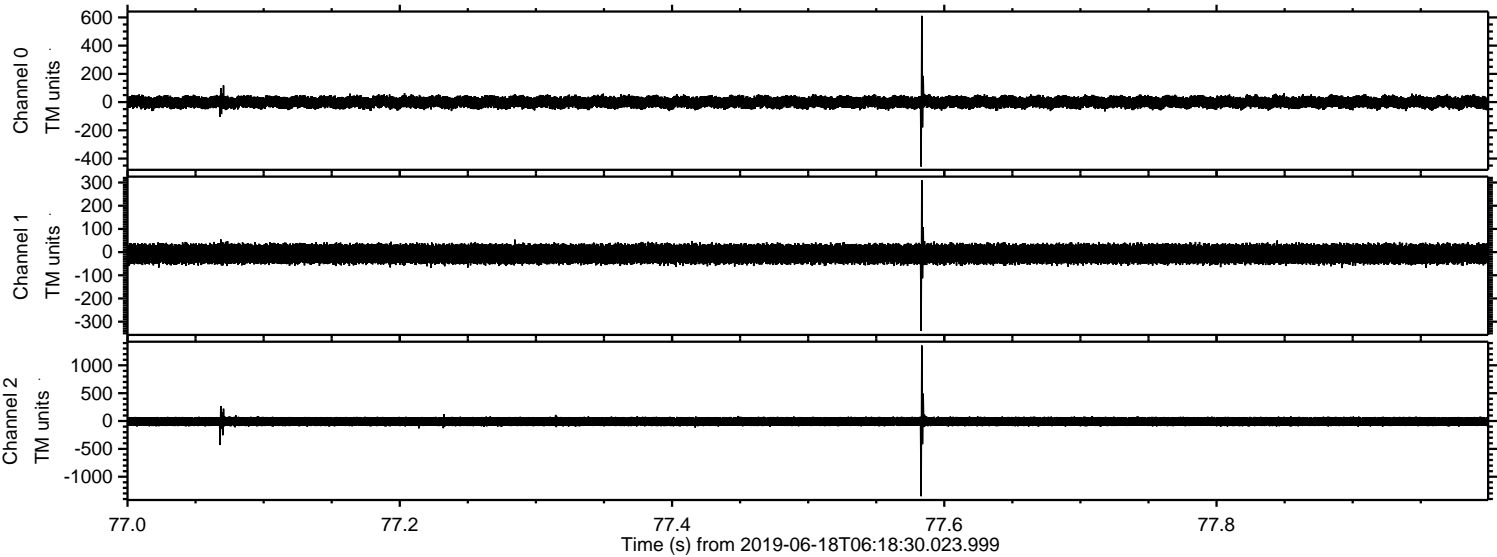
ELMAVAN 3D WAVEFORMS (Measured data sampled at 50 kHz) 51000 packets of 144 samples from 2019-06-18T06:18:30.023.999. Part 123/147

Processed Tue Jun 18 08:26:08 2019 by ELM ver.2012-10-06 from 001\_\_elm20190618\_061829\_\_dat00.bin





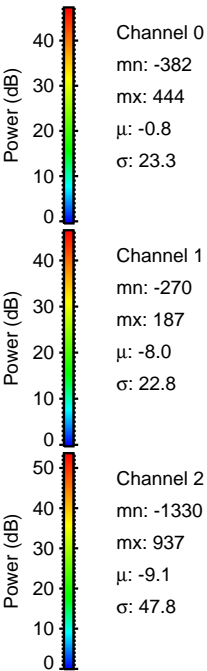
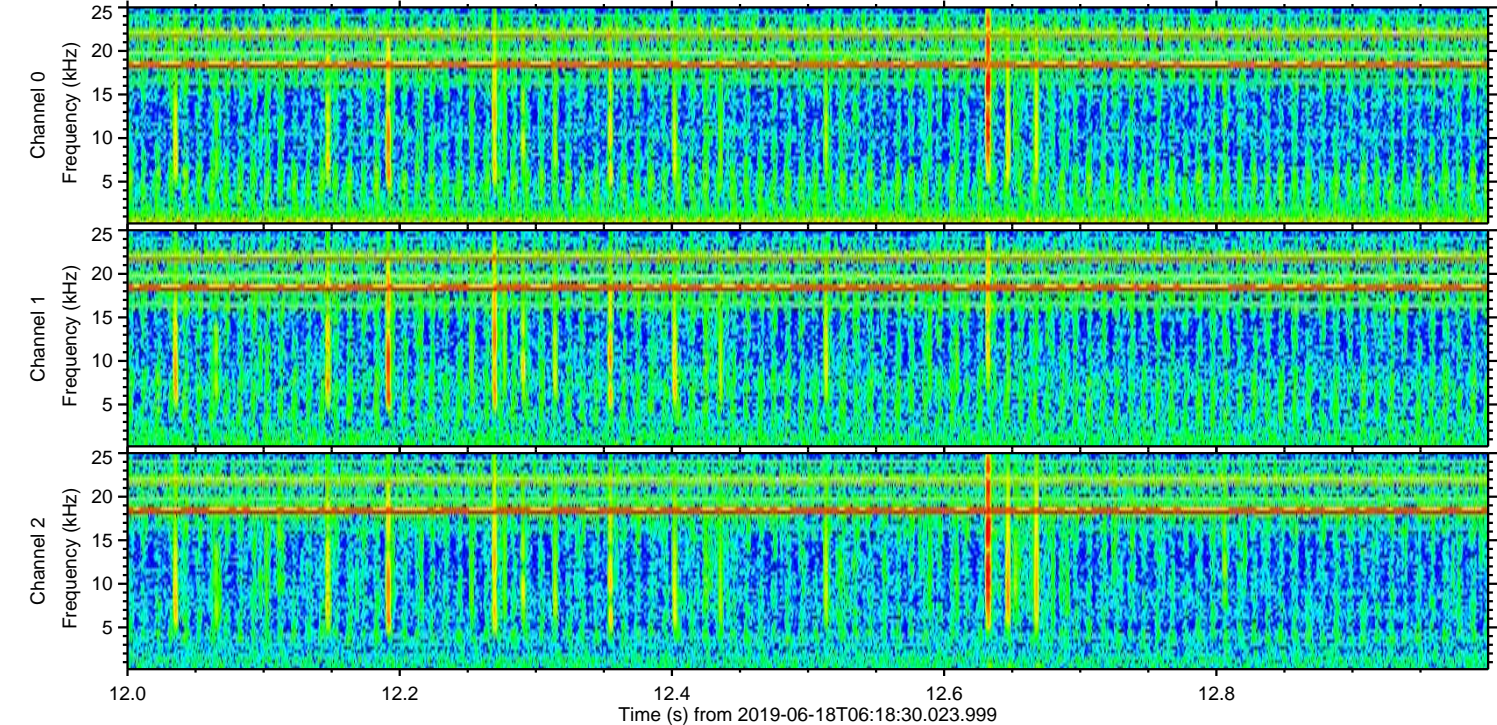
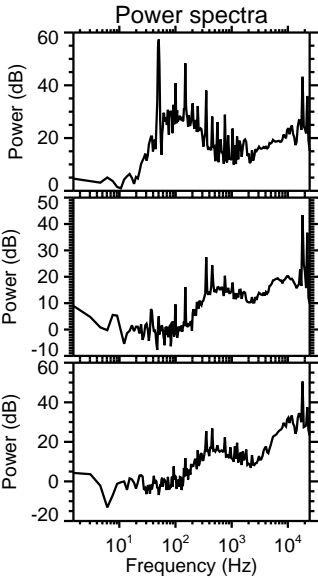
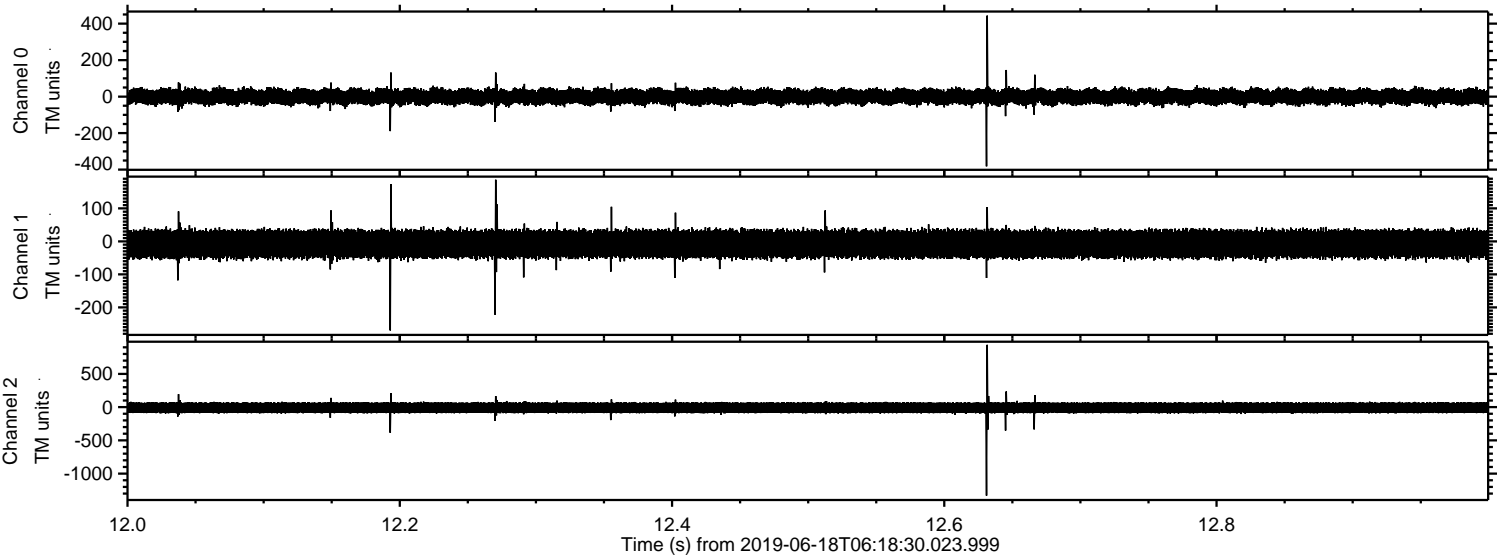
Processed Tue Jun 18 08:26:09 2019 by ELM ver.2012-10-06 from 001\_\_elm20190618\_061829\_\_dat00.bin





ELMAVAN 3D WAVEFORMS (Measured data sampled at 50 kHz) 51000 packets of 144 samples from 2019-06-18T06:18:30.023.999. Part 13/147

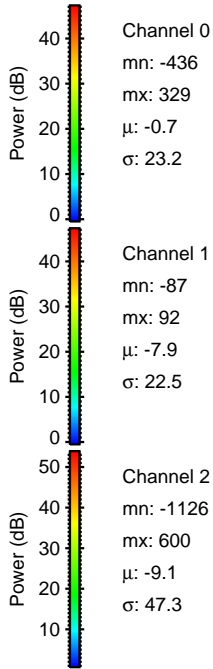
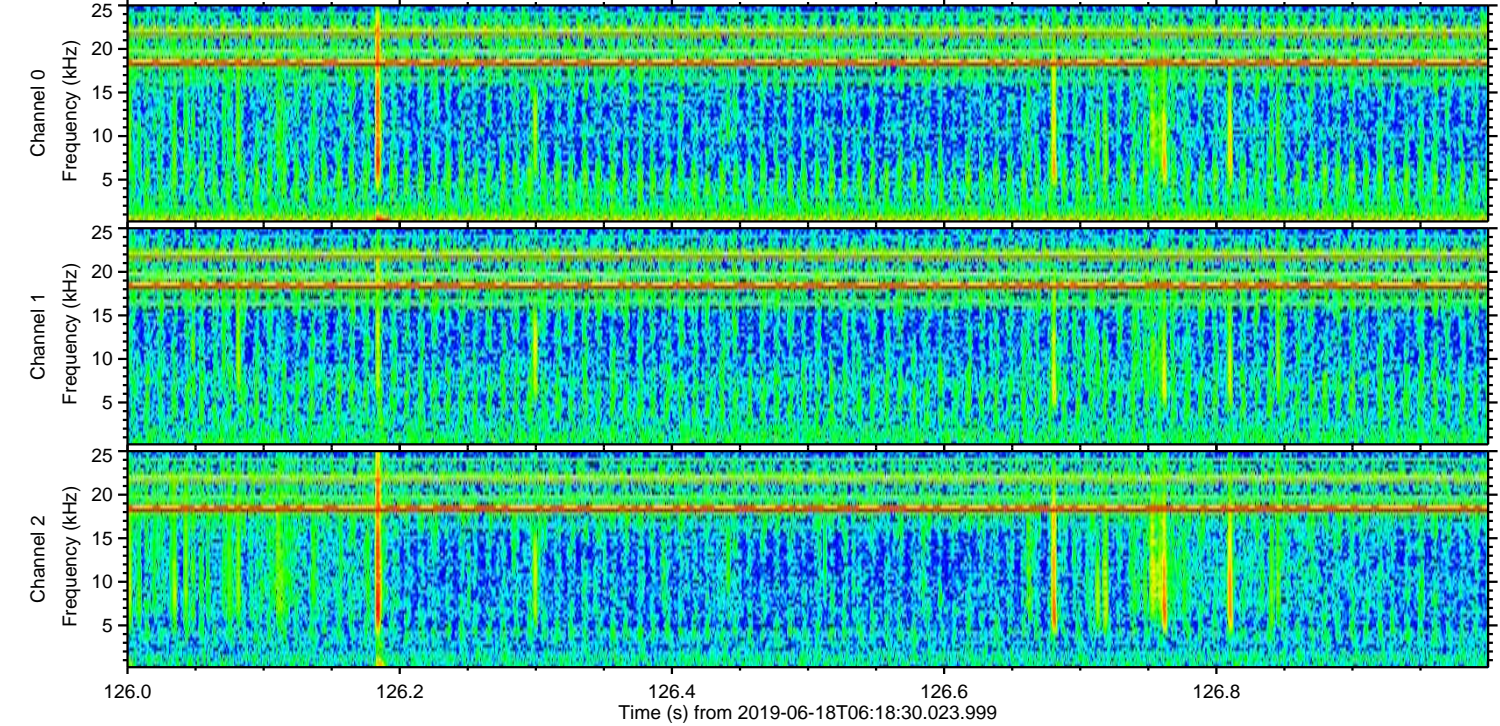
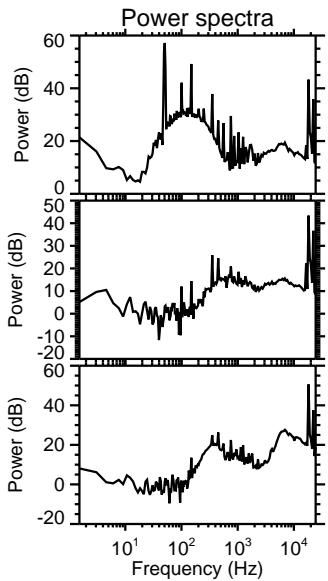
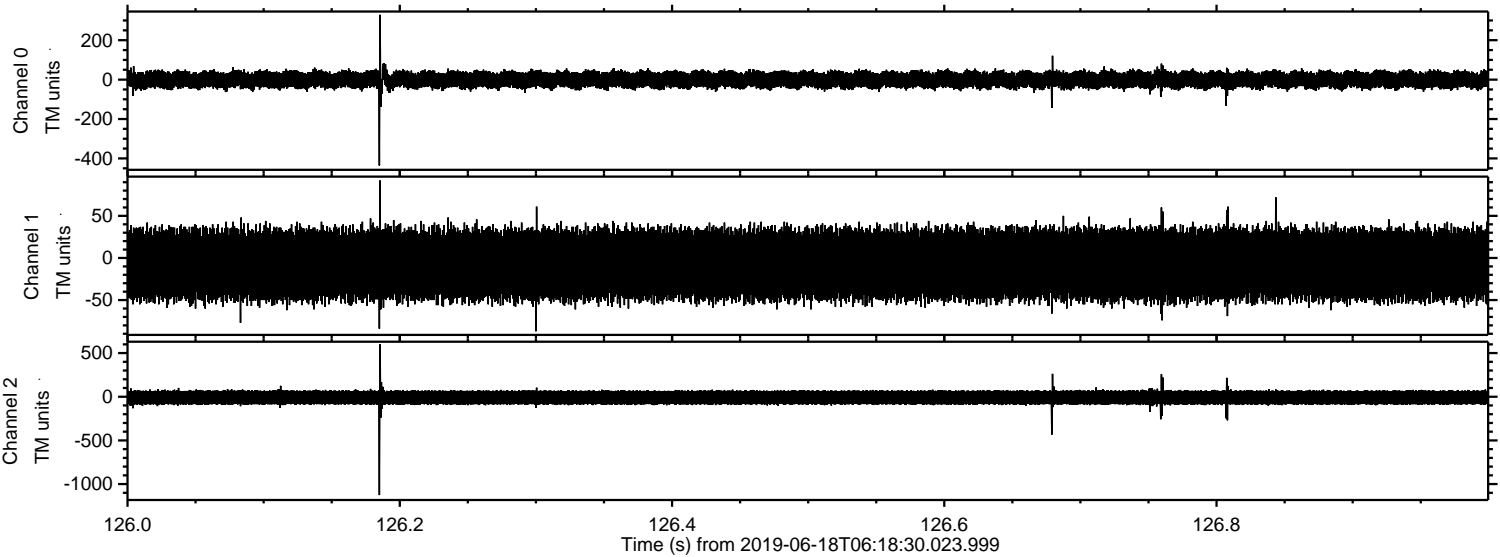
Processed Tue Jun 18 08:26:09 2019 by ELM ver.2012-10-06 from 001\_\_elm20190618\_061829\_\_dat00.bin





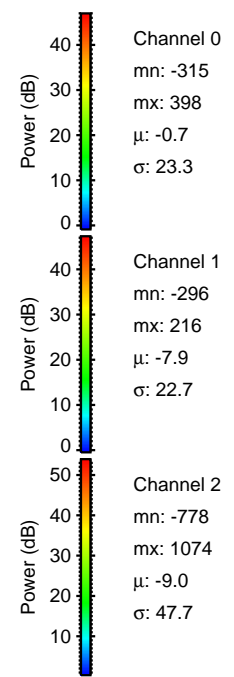
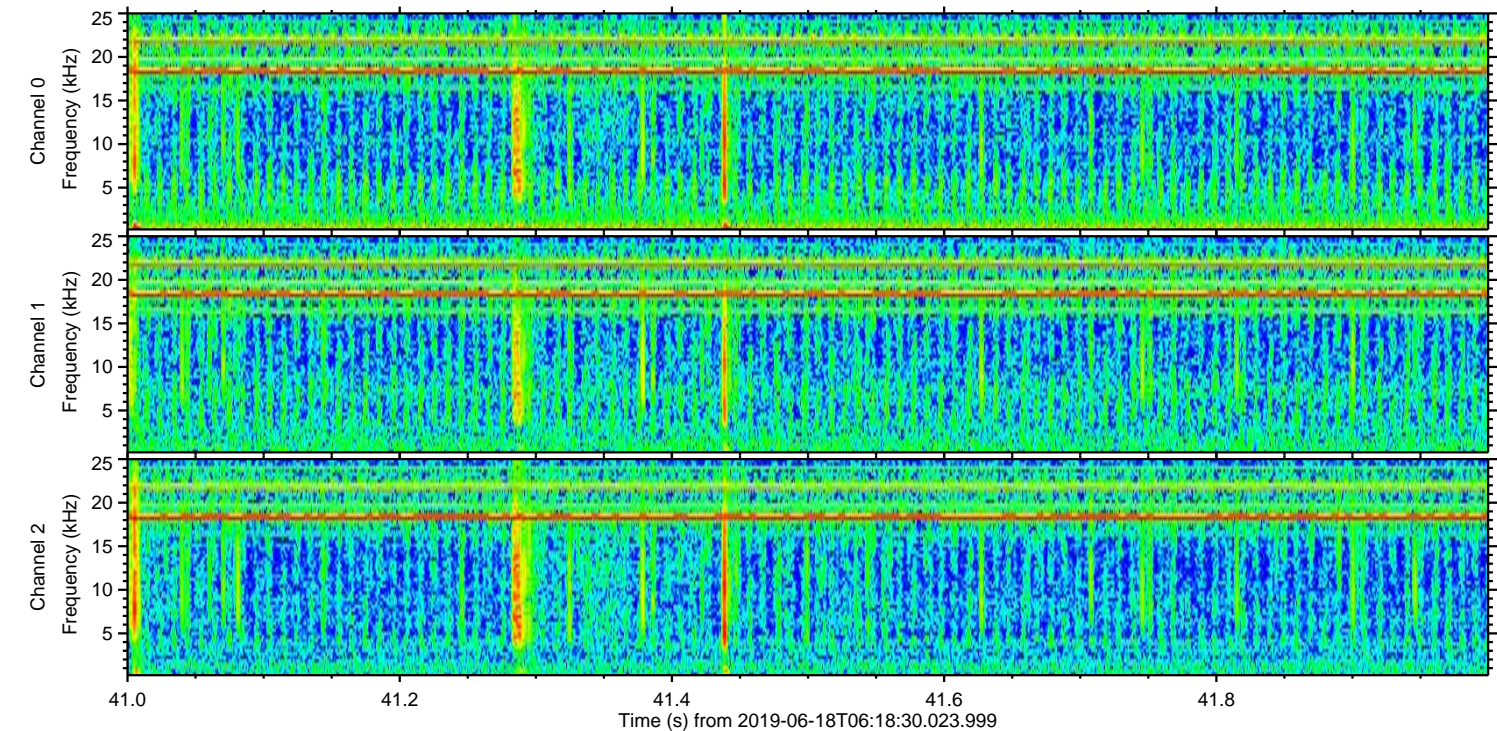
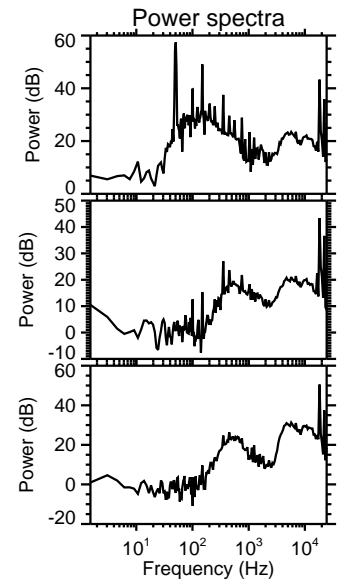
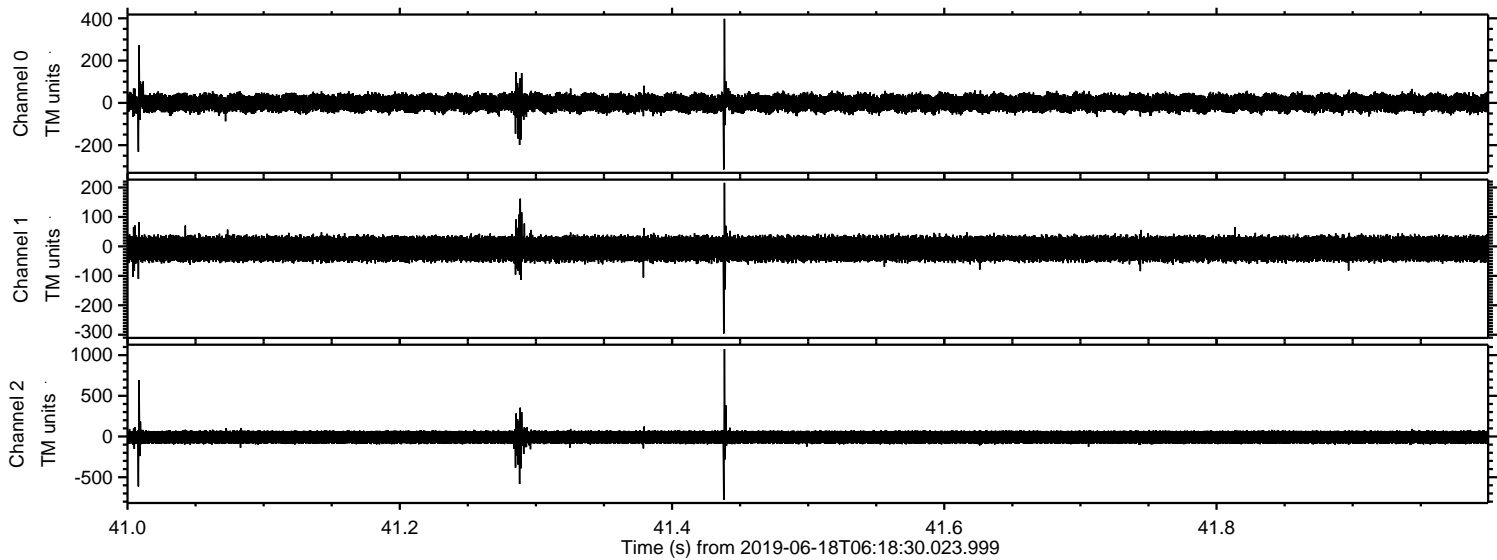
ELMAVAN 3D WAVEFORMS (Measured data sampled at 50 kHz) 51000 packets of 144 samples from 2019-06-18T06:18:30.023.999. Part 127/147

Processed Tue Jun 18 08:26:10 2019 by ELM ver.2012-10-06 from 001\_\_elm20190618\_061829\_\_dat00.bin



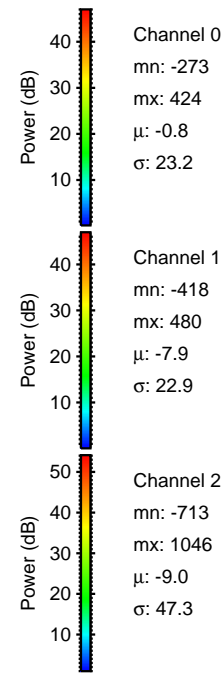
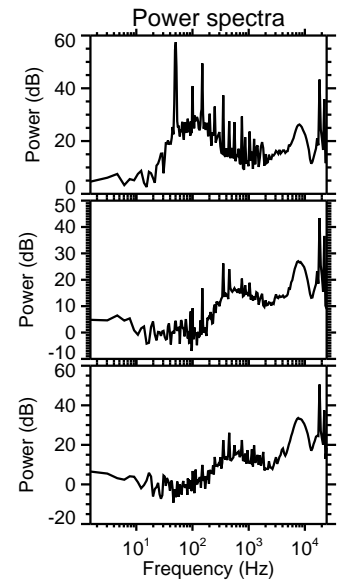
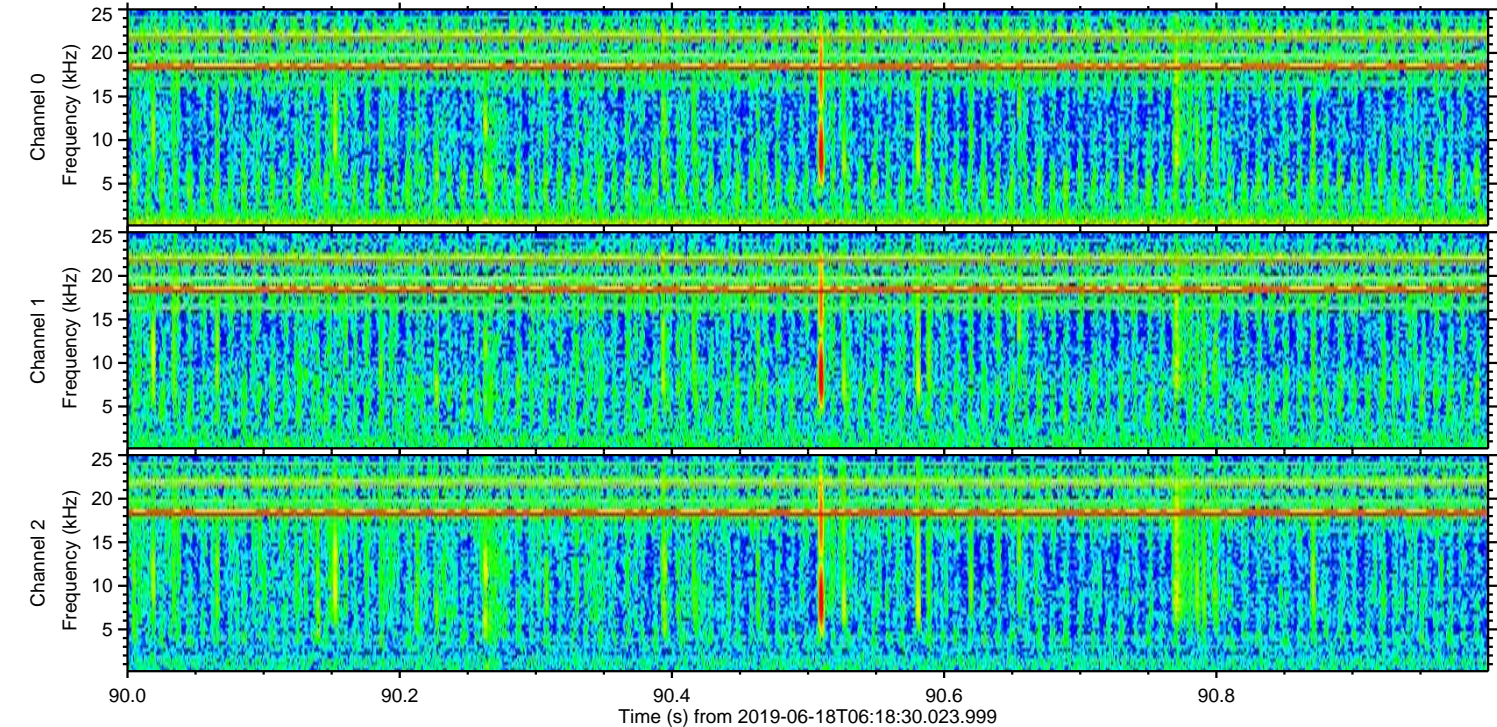
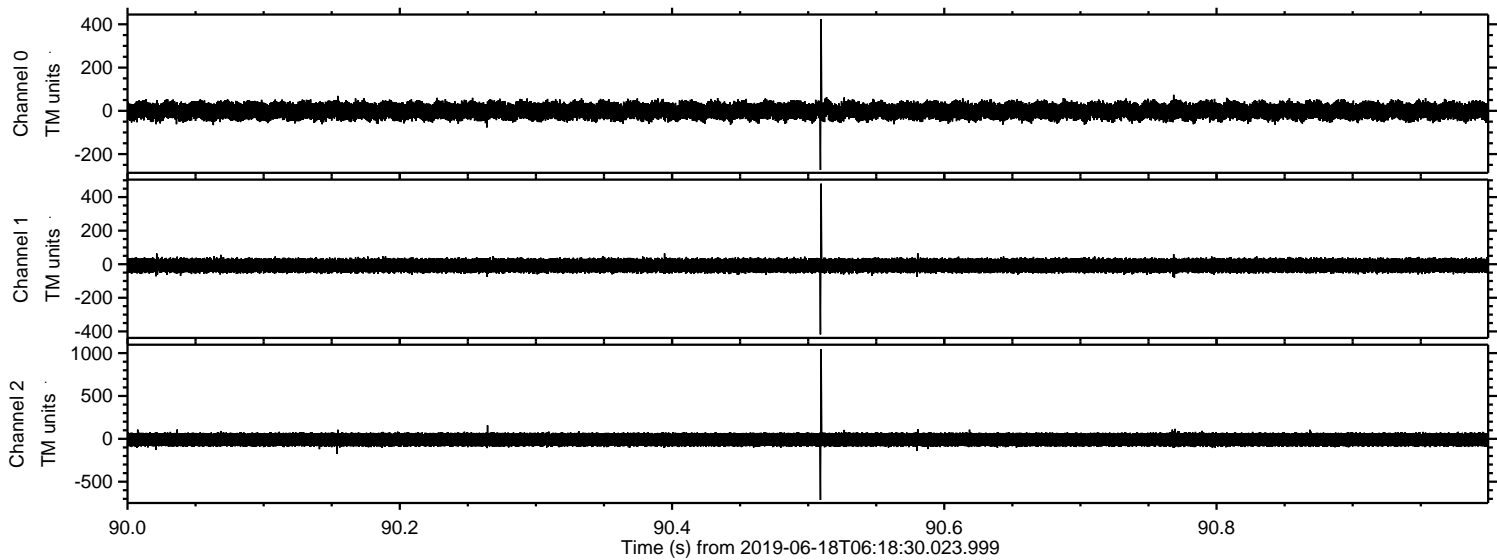


Processed Tue Jun 18 08:26:10 2019 by ELM ver.2012-10-06 from 001\_\_elm20190618\_061829\_\_dat00.bin





Processed Tue Jun 18 08:26:11 2019 by ELM ver.2012-10-06 from 001\_\_elm20190618\_061829\_\_dat00.bin



Channel 0  
mn: -273  
mx: 424  
 $\mu$ : -0.8  
 $\sigma$ : 23.2

Channel 1  
mn: -418  
mx: 480  
 $\mu$ : -7.9  
 $\sigma$ : 22.9

Channel 2  
mn: -713  
mx: 1046  
 $\mu$ : -9.0  
 $\sigma$ : 47.3



Processed Tue Jun 18 08:26:12 2019 by ELM ver.2012-10-06 from 001\_\_elm20190618\_061829\_\_dat00.bin

