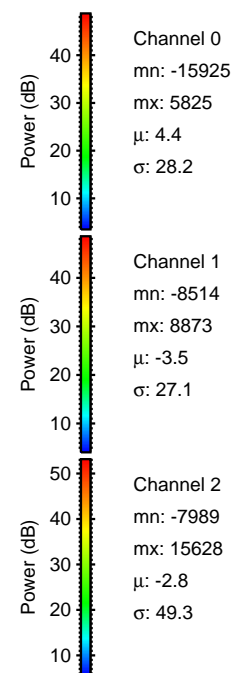
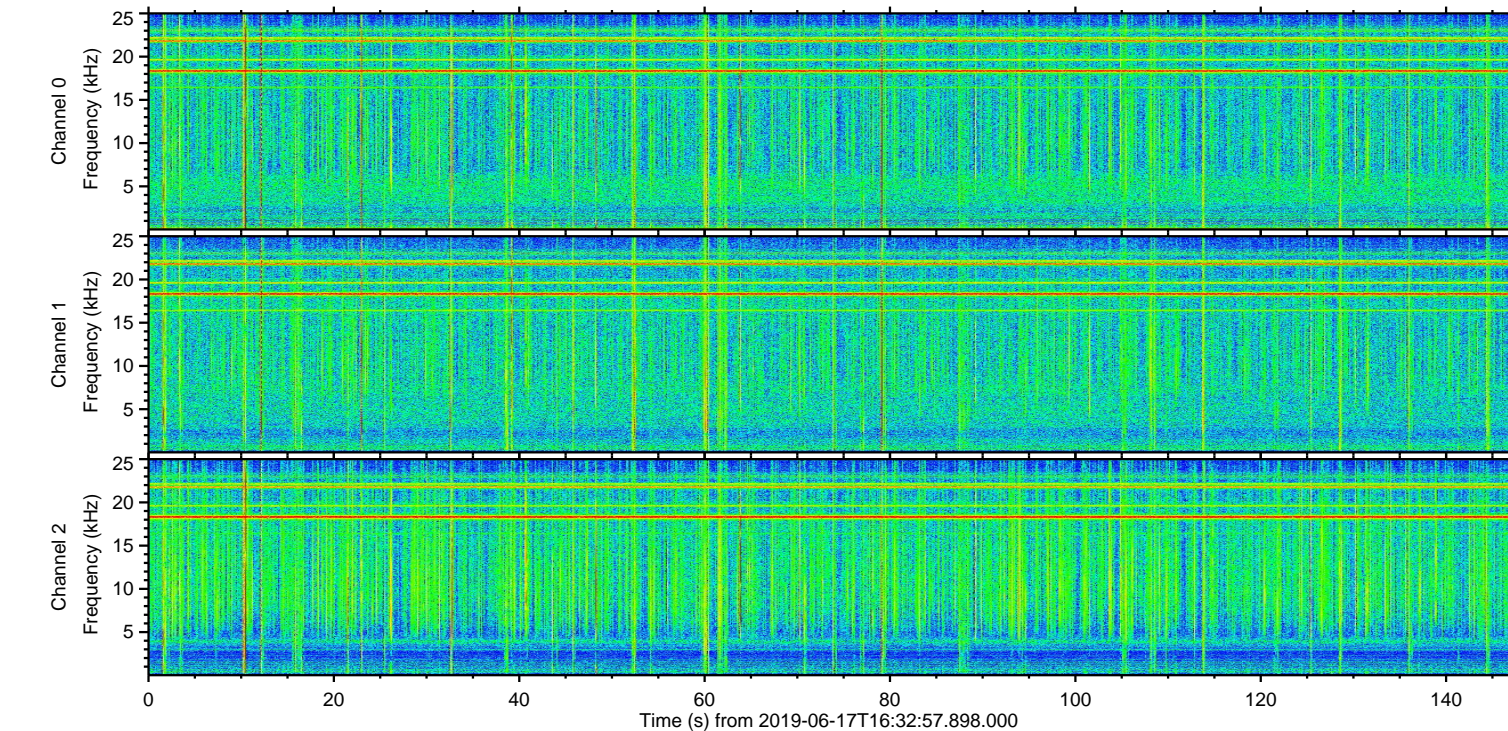
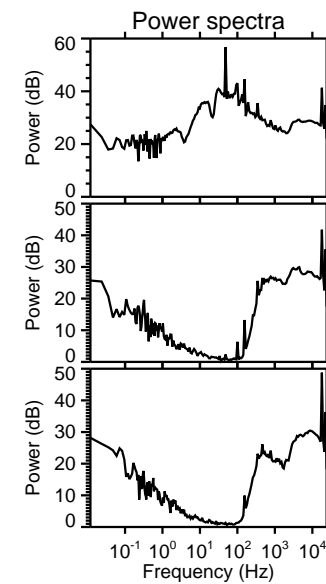
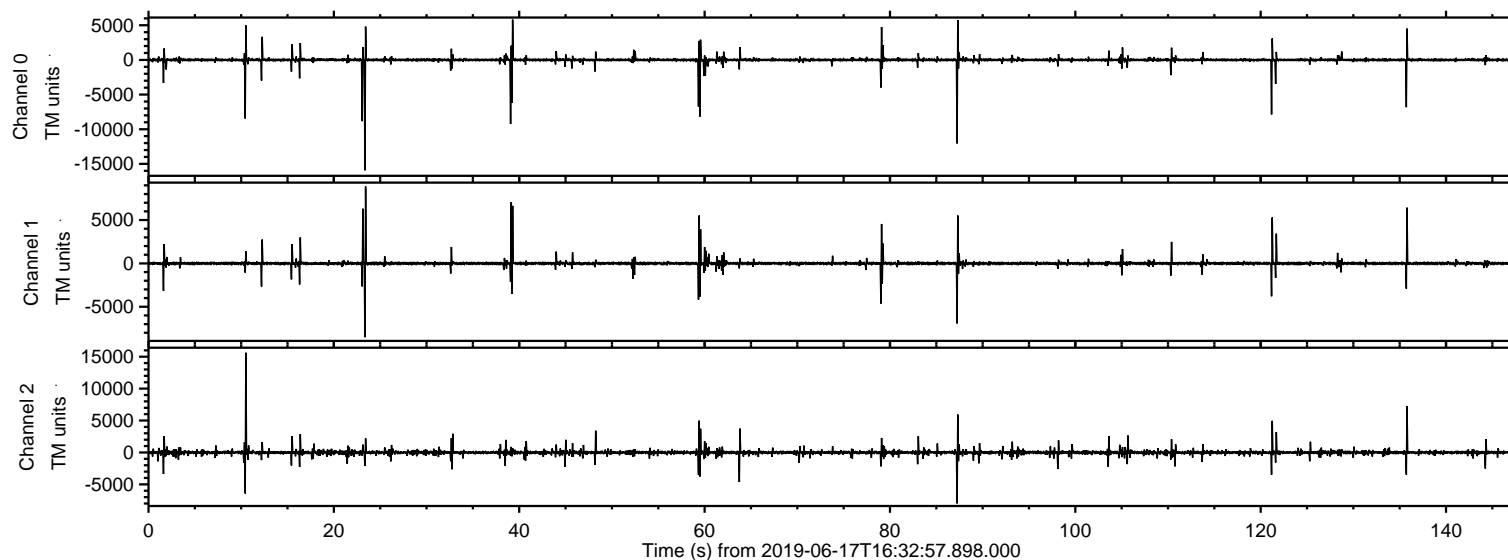


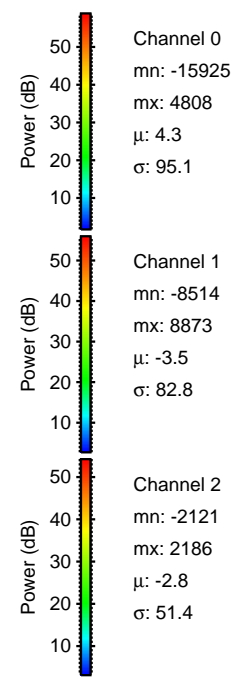
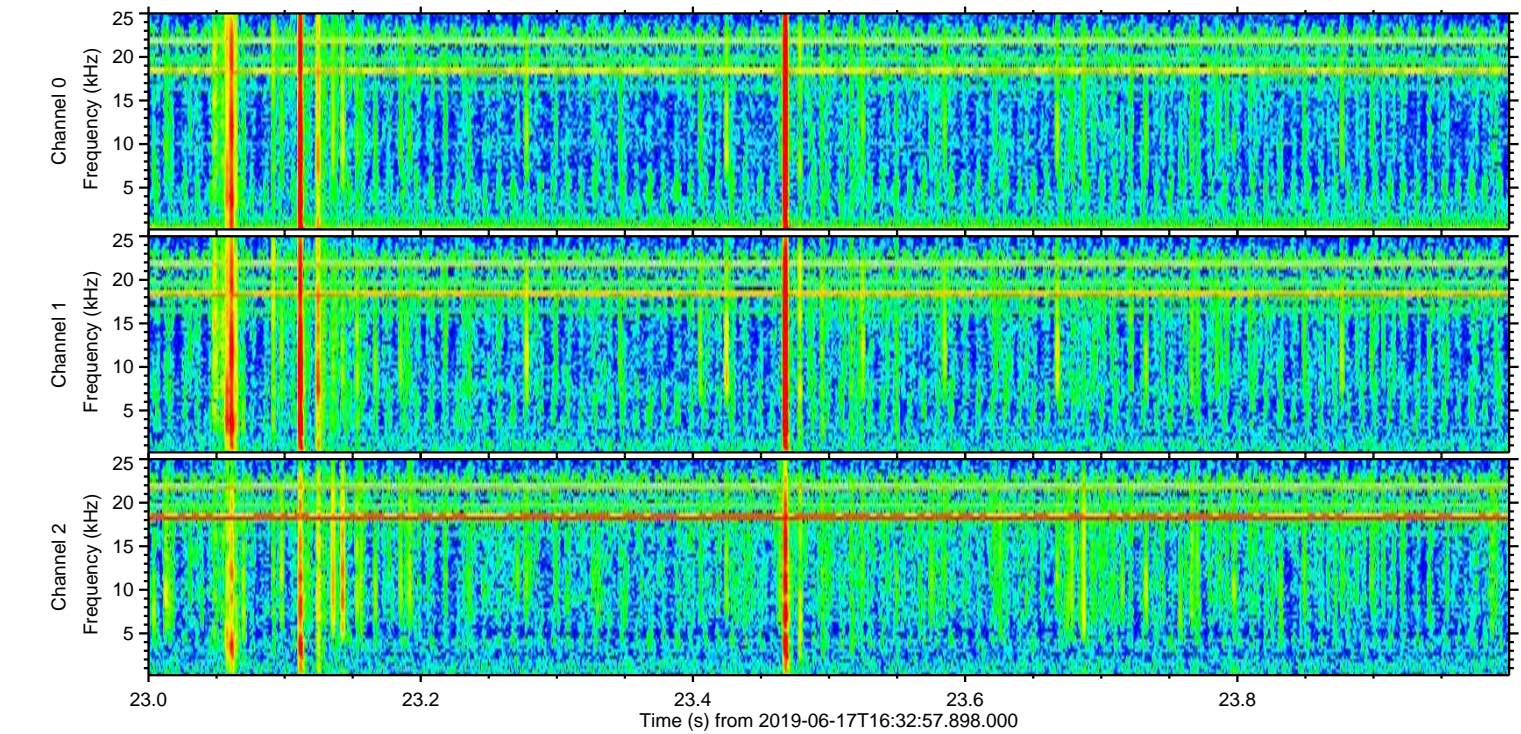
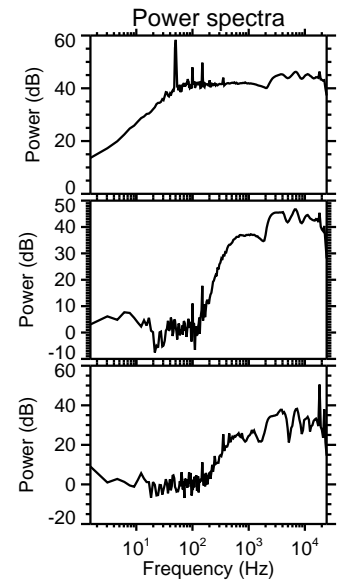
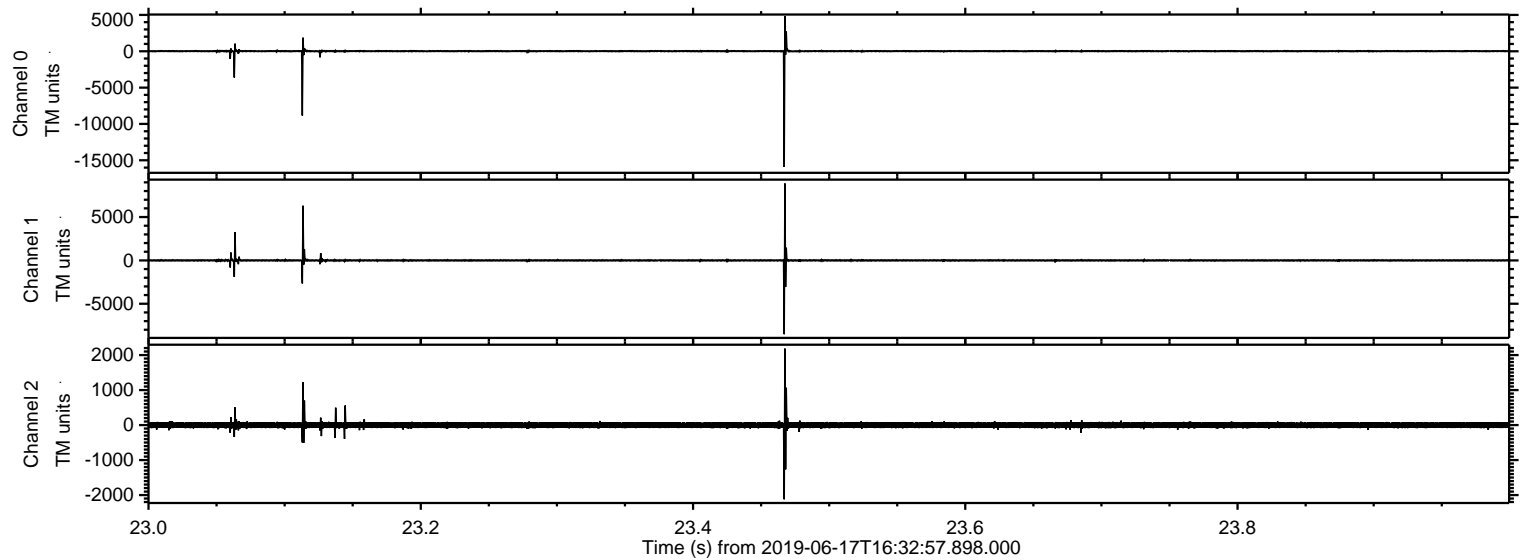
ELMAVAN 3D WAVEFORMS (Measured data sampled at 50 kHz) 51000 packets of 144 samples from 2019-06-17T16:32:57.898.000.

Processed Mon Jun 17 18:40:45 2019 by ELM ver.2012-10-06 from 001__elm20190617_163256__dat00.bin

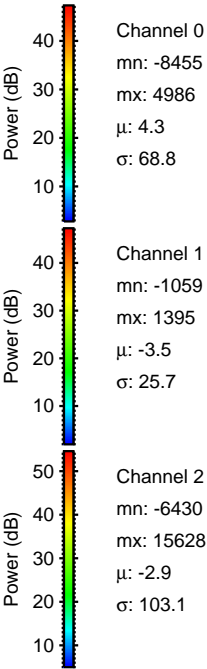
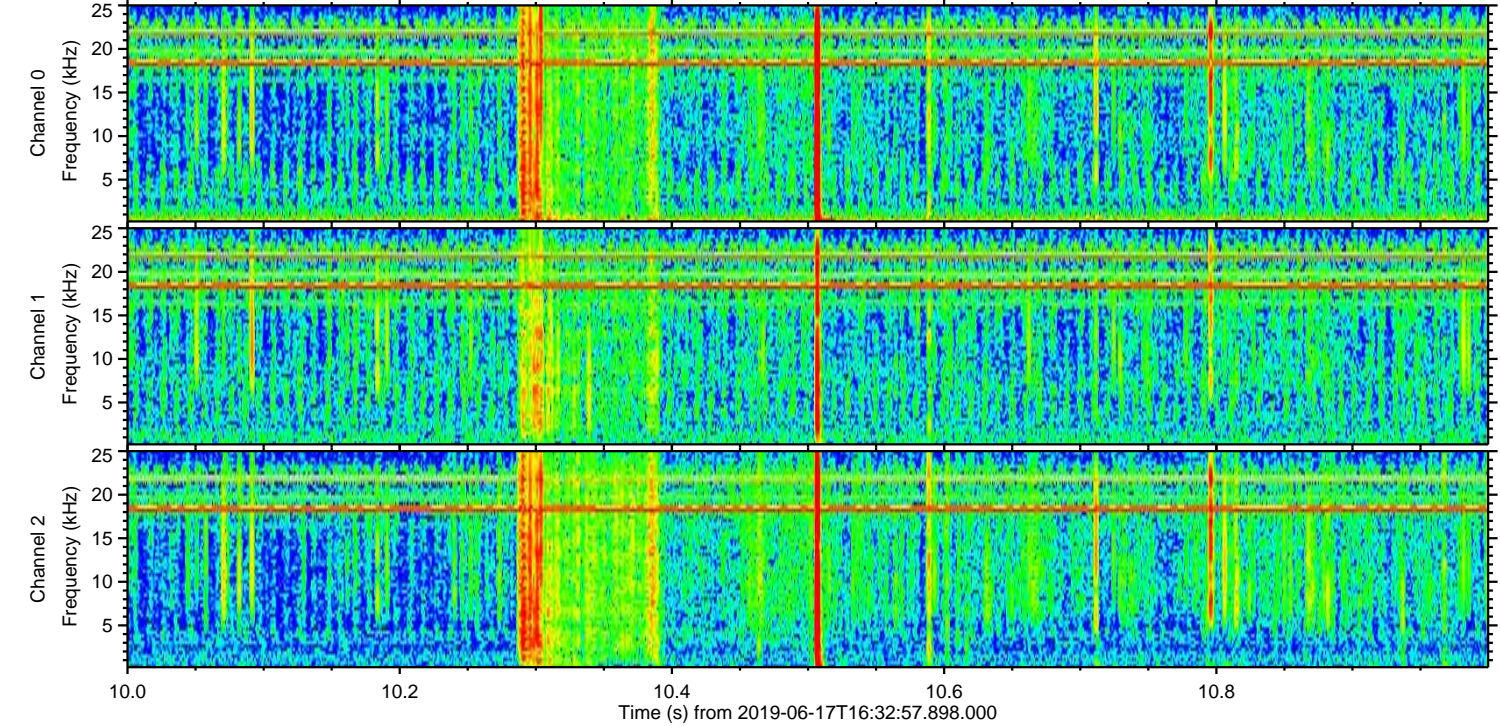
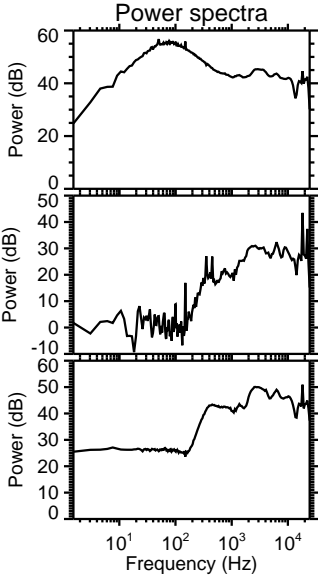
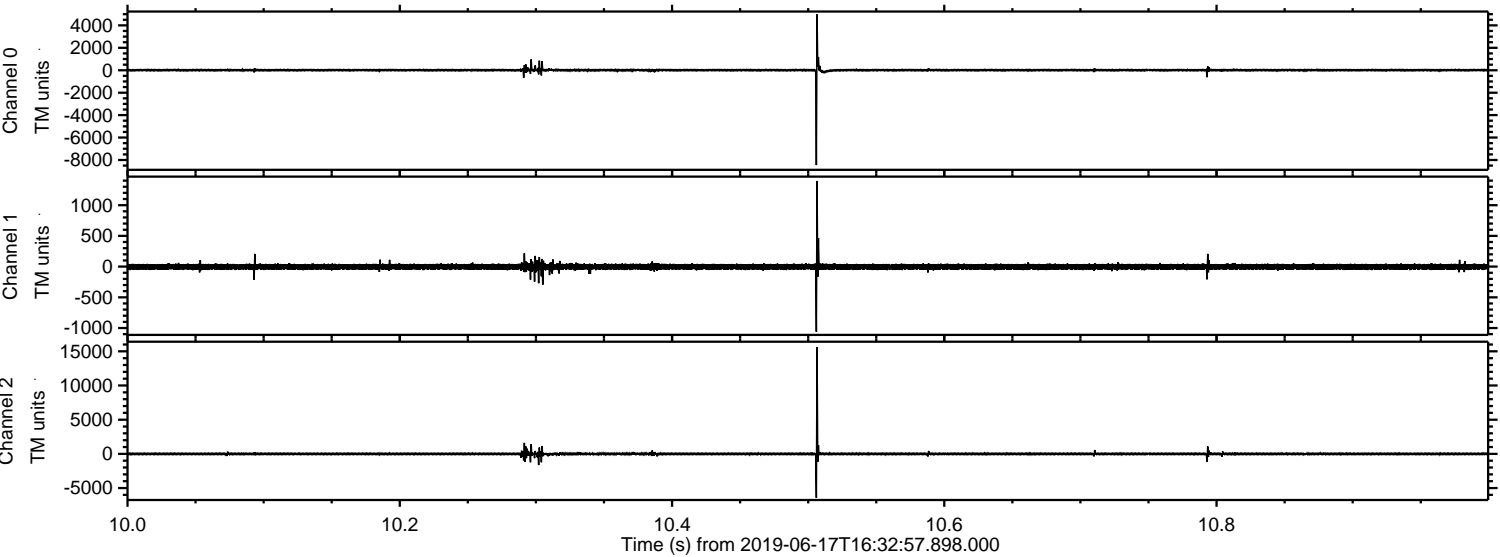


ELMAVAN 3D WAVEFORMS (Measured data sampled at 50 kHz) 51000 packets of 144 samples from 2019-06-17T16:32:57.898.000. Part 24/147

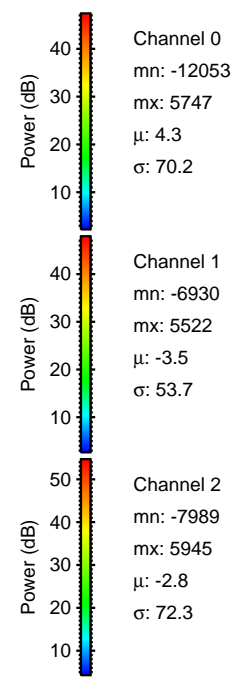
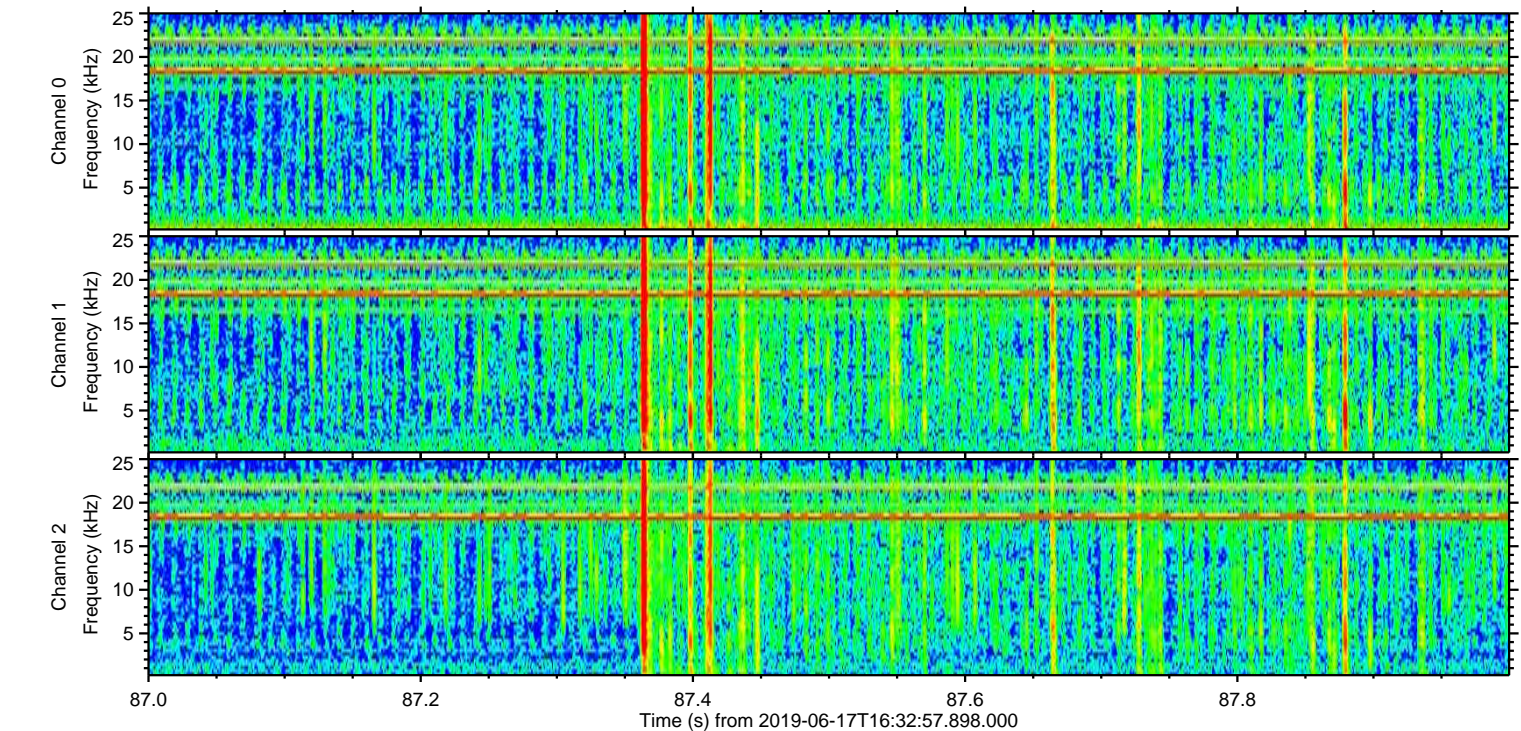
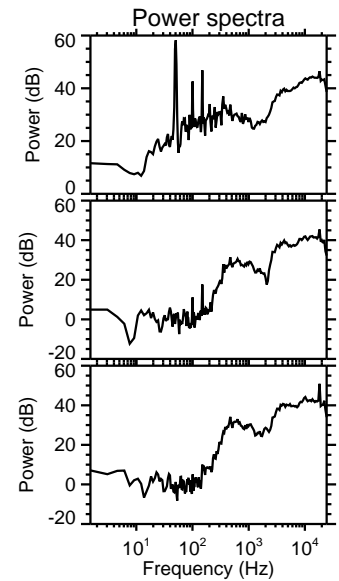
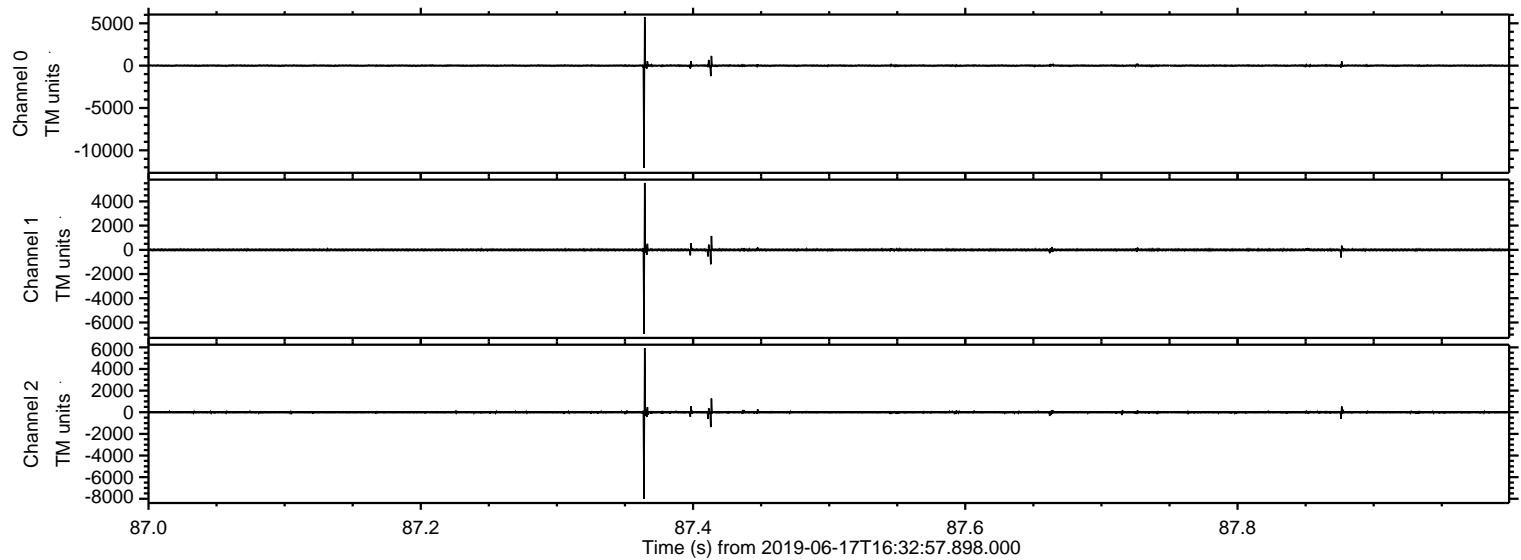
Processed Mon Jun 17 18:40:51 2019 by ELM ver.2012-10-06 from 001__elm20190617_163256__dat00.bin



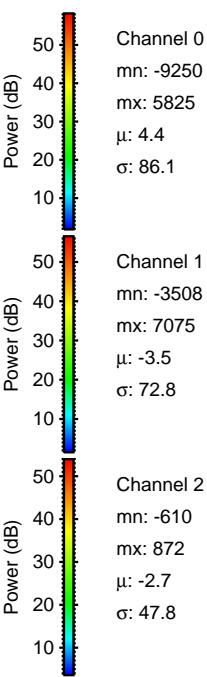
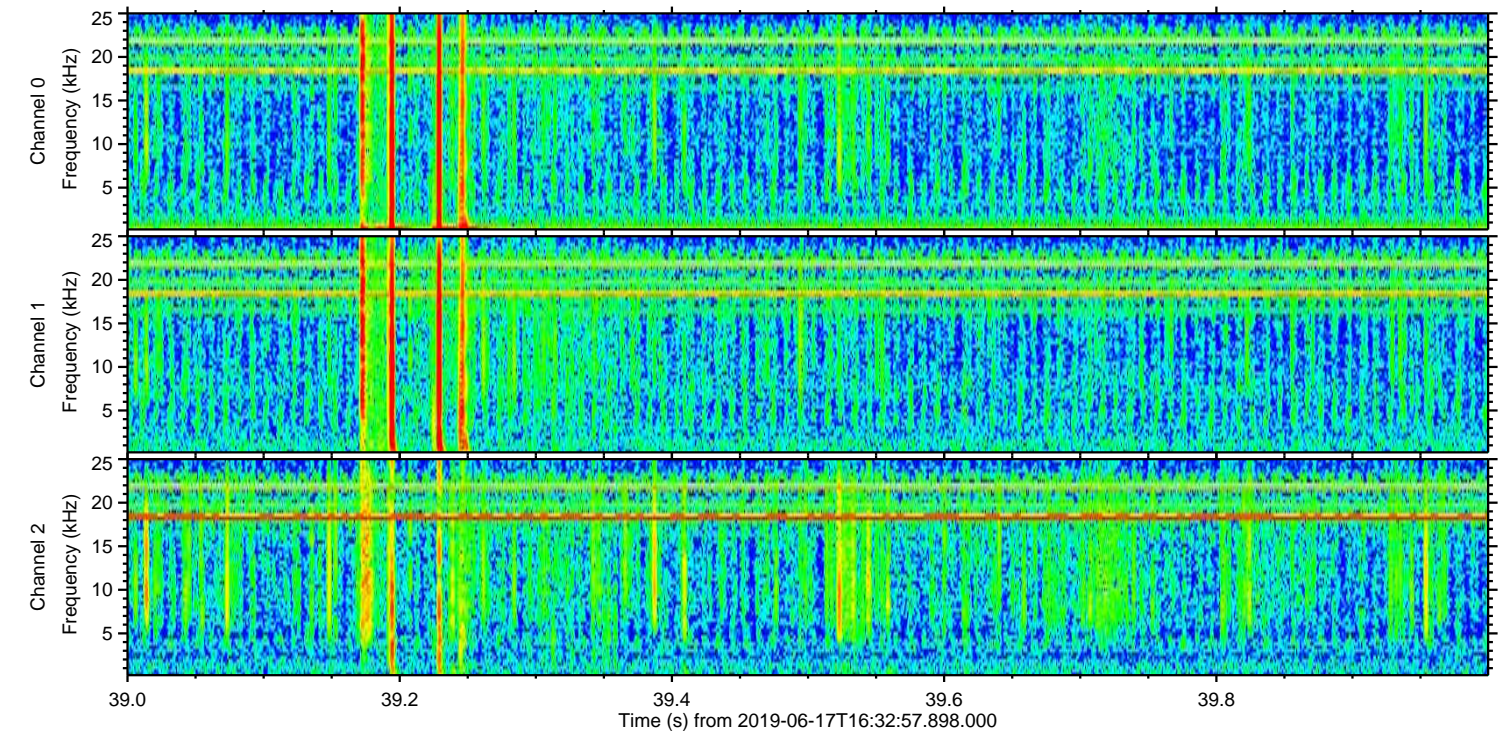
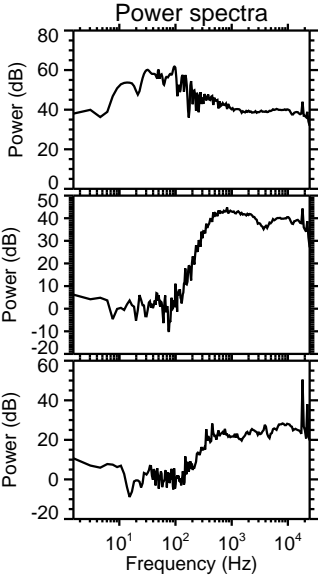
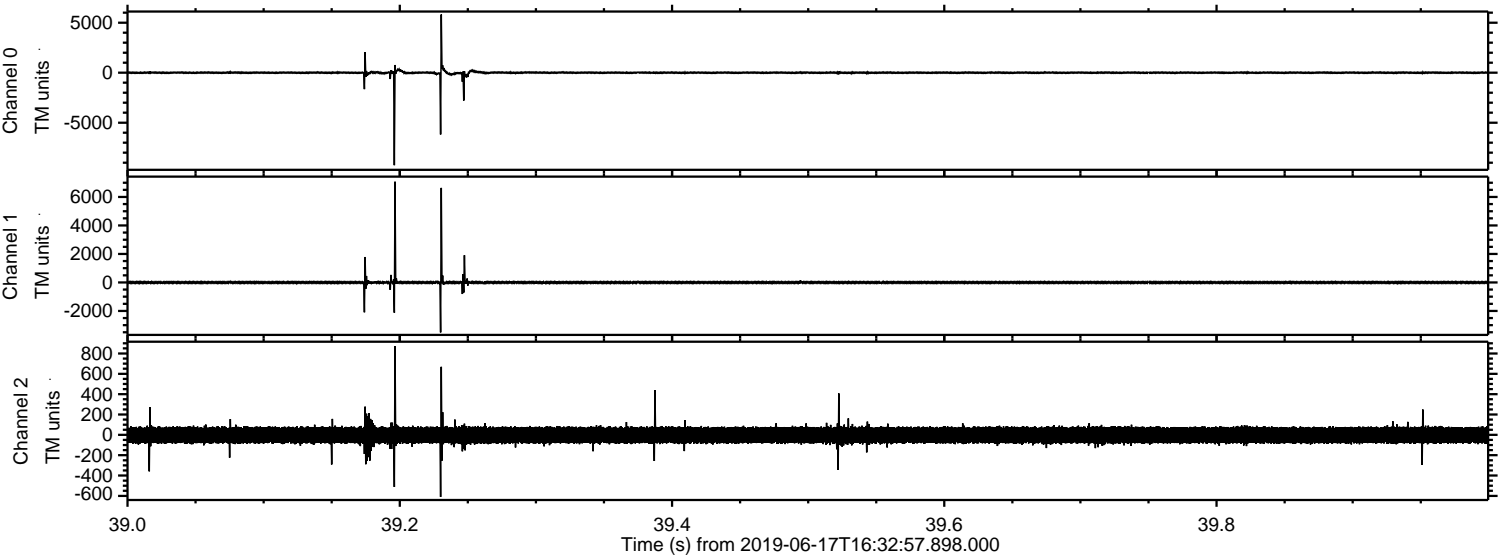
Processed Mon Jun 17 18:40:52 2019 by ELM ver.2012-10-06 from 001__elm20190617_163256__dat00.bin



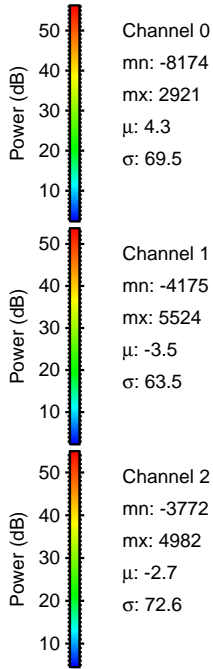
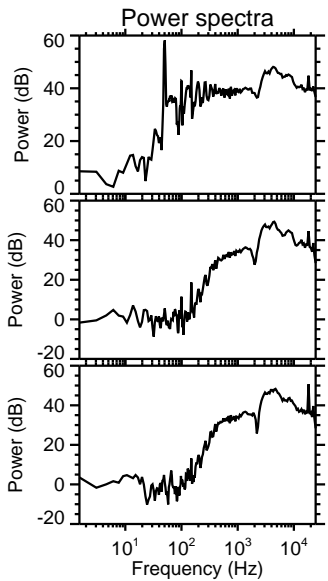
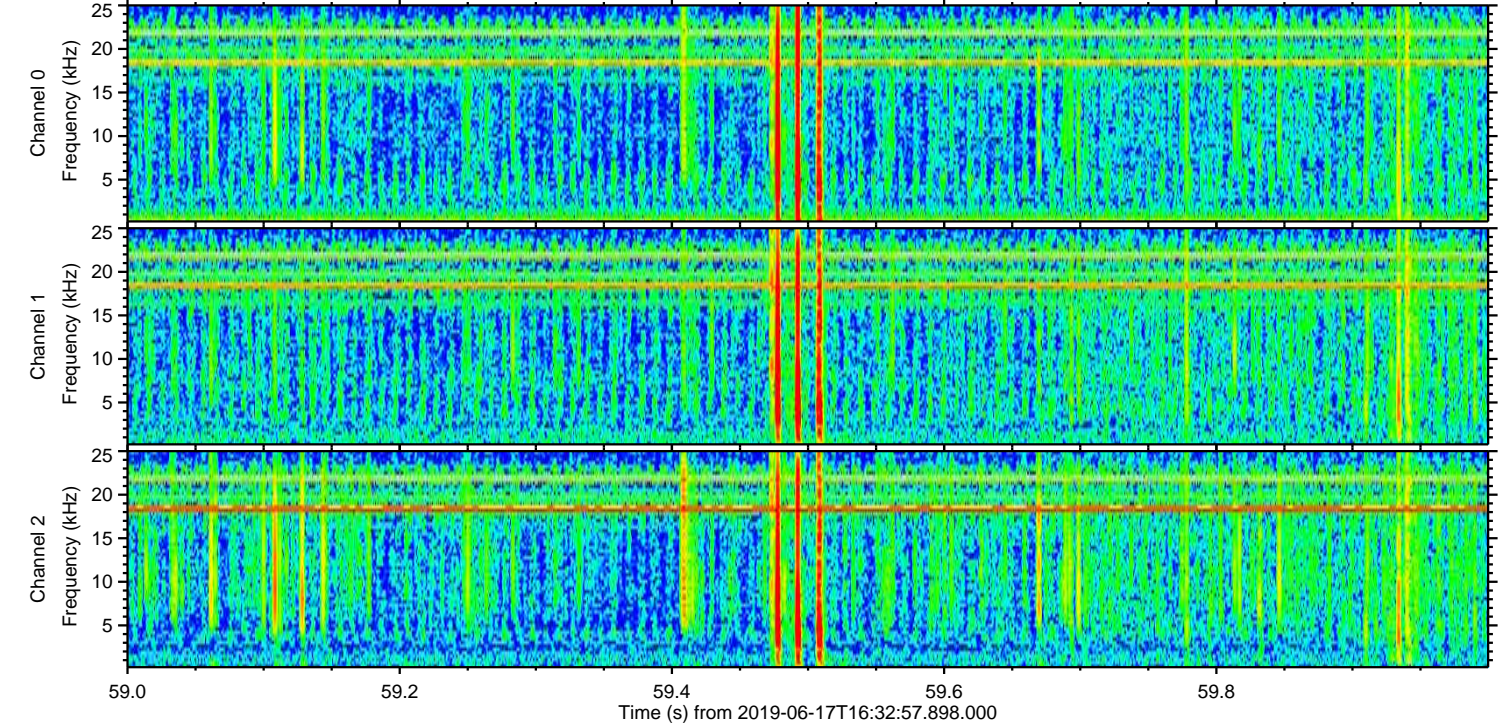
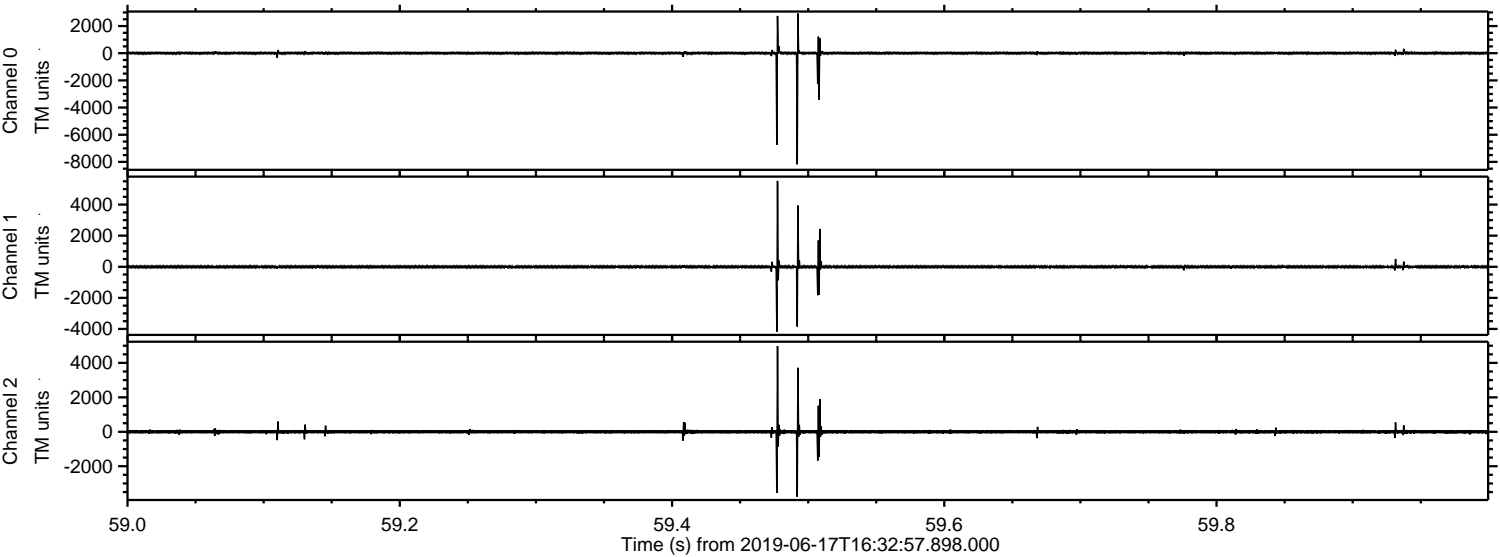
Processed Mon Jun 17 18:40:52 2019 by ELM ver.2012-10-06 from 001__elm20190617_163256__dat00.bin



Processed Mon Jun 17 18:40:53 2019 by ELM ver.2012-10-06 from 001__elm20190617_163256__dat00.bin

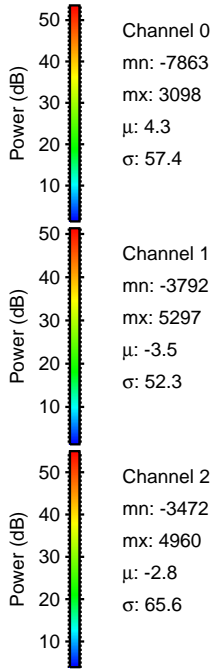
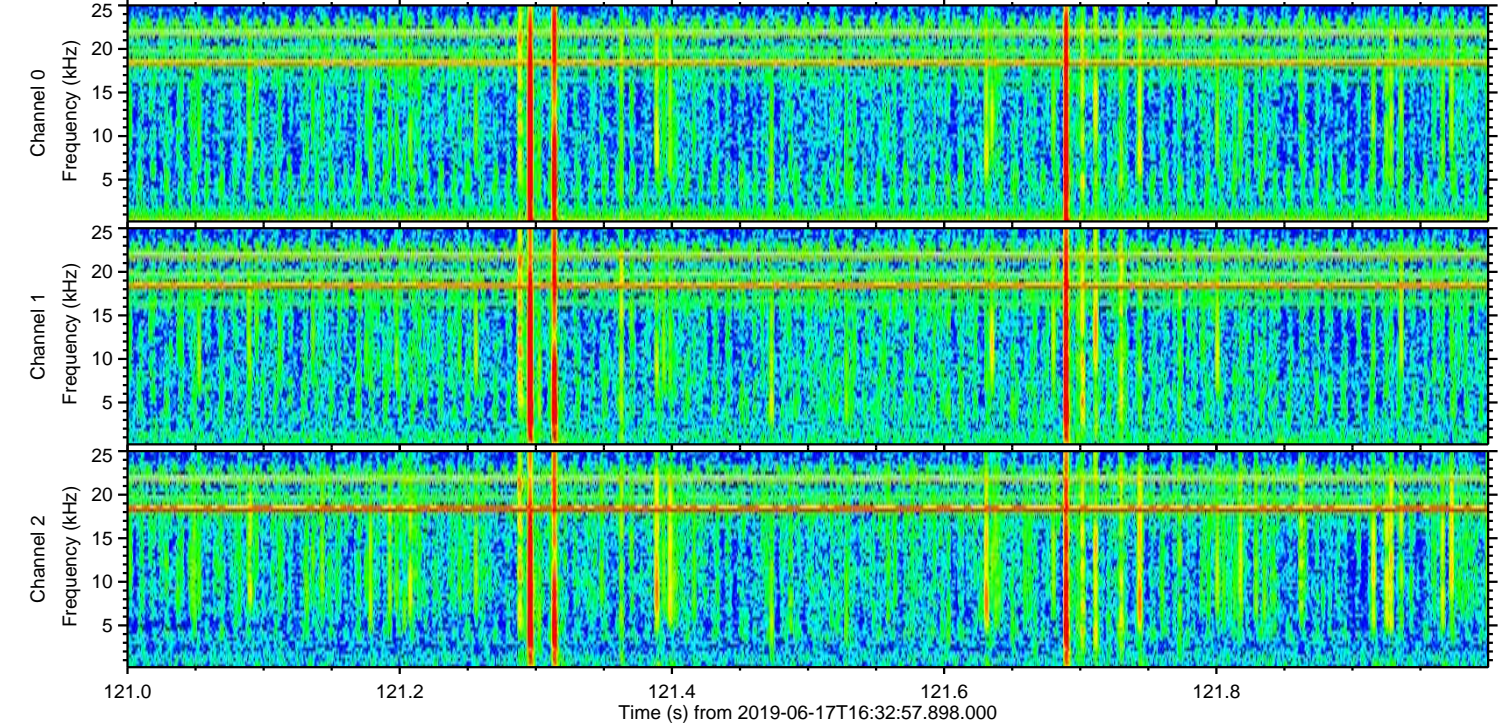
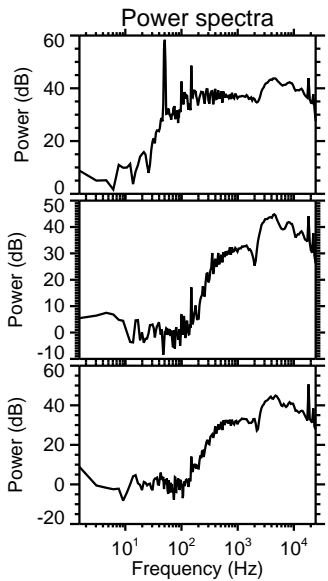
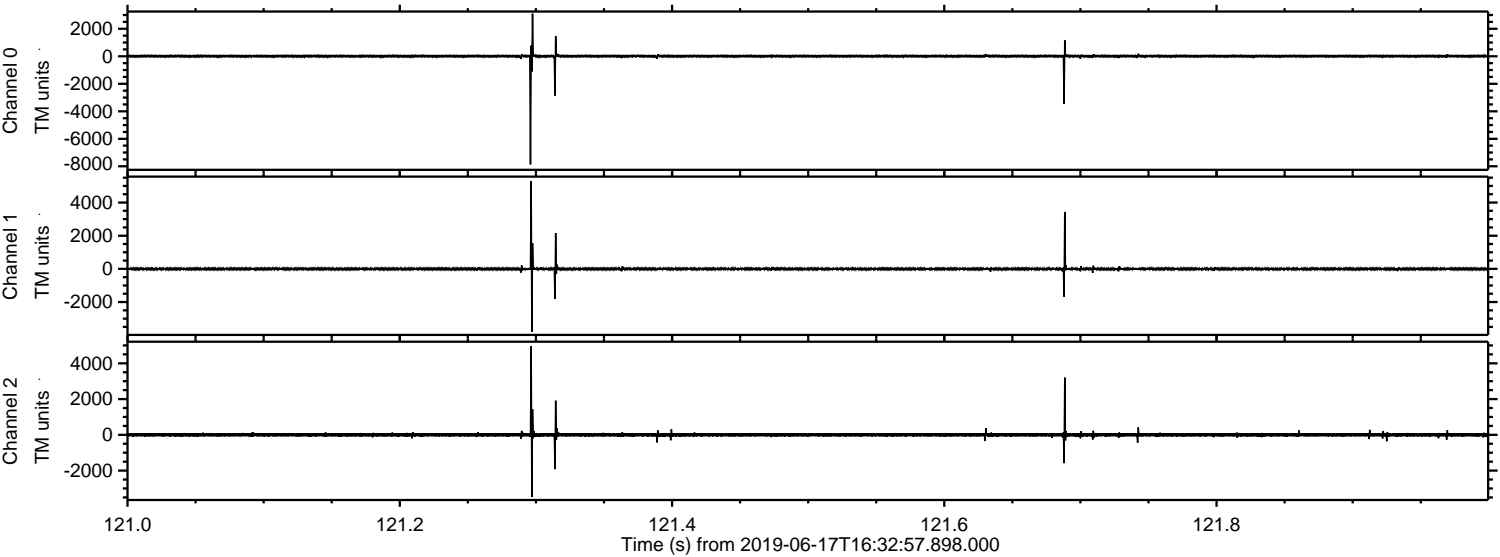


Processed Mon Jun 17 18:40:54 2019 by ELM ver.2012-10-06 from 001__elm20190617_163256__dat00.bin



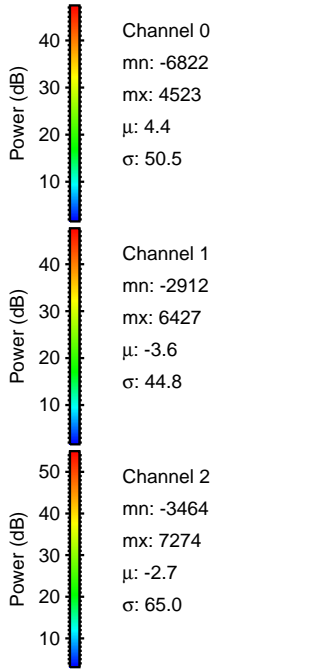
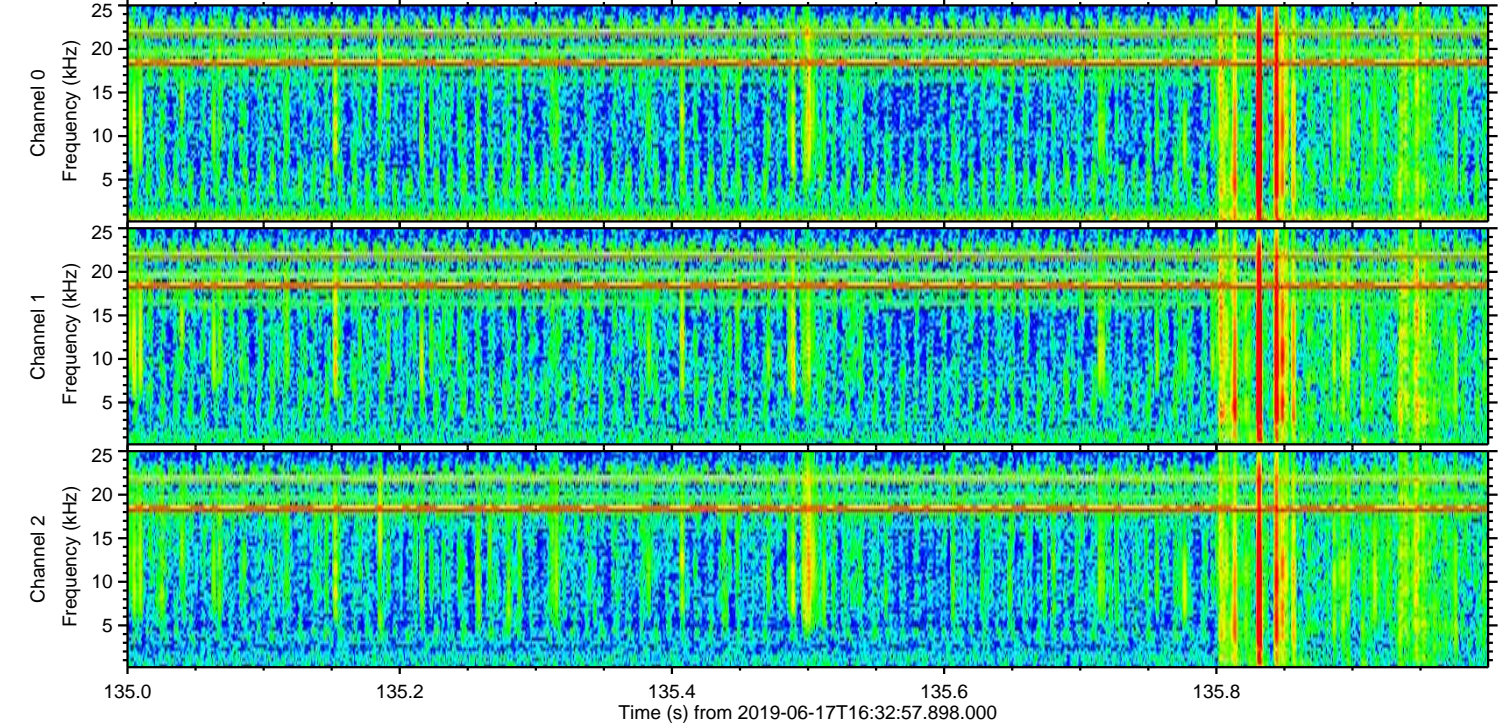
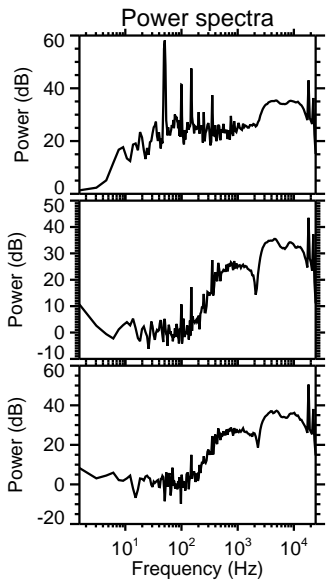
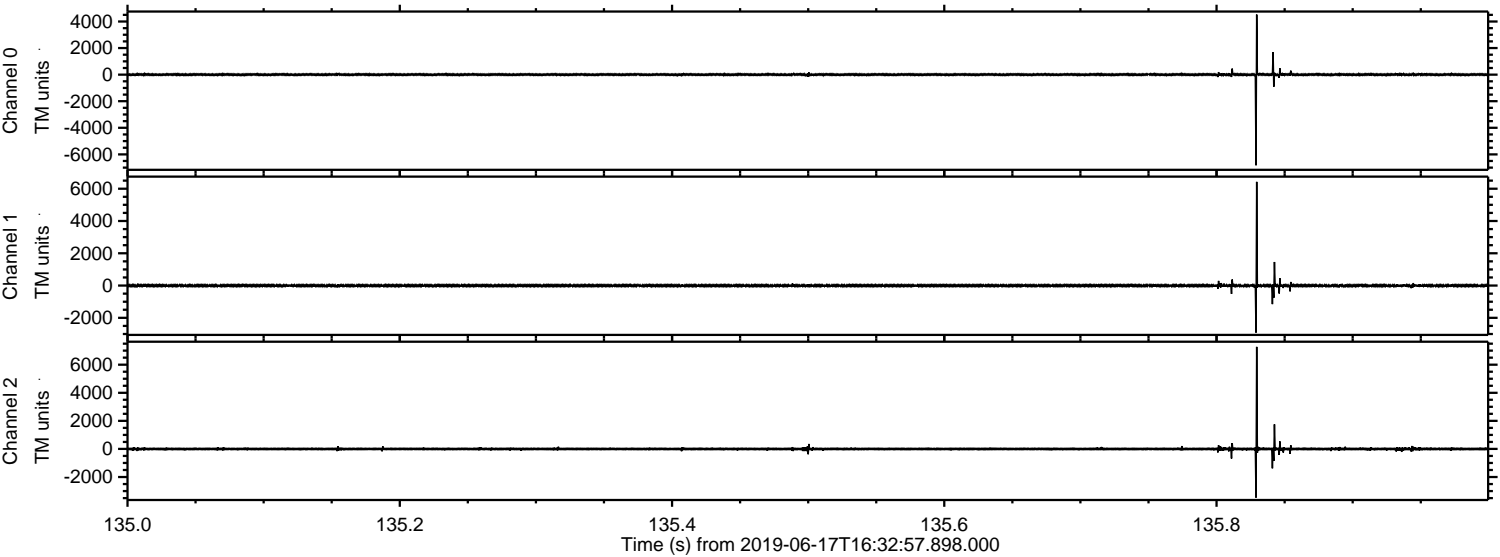
ELMAVAN 3D WAVEFORMS (Measured data sampled at 50 kHz) 51000 packets of 144 samples from 2019-06-17T16:32:57.898.000. Part 122/147

Processed Mon Jun 17 18:40:54 2019 by ELM ver.2012-10-06 from 001__elm20190617_163256__dat00.bin

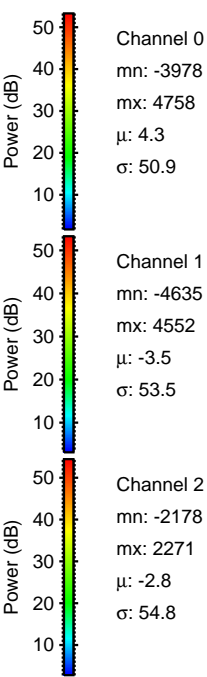
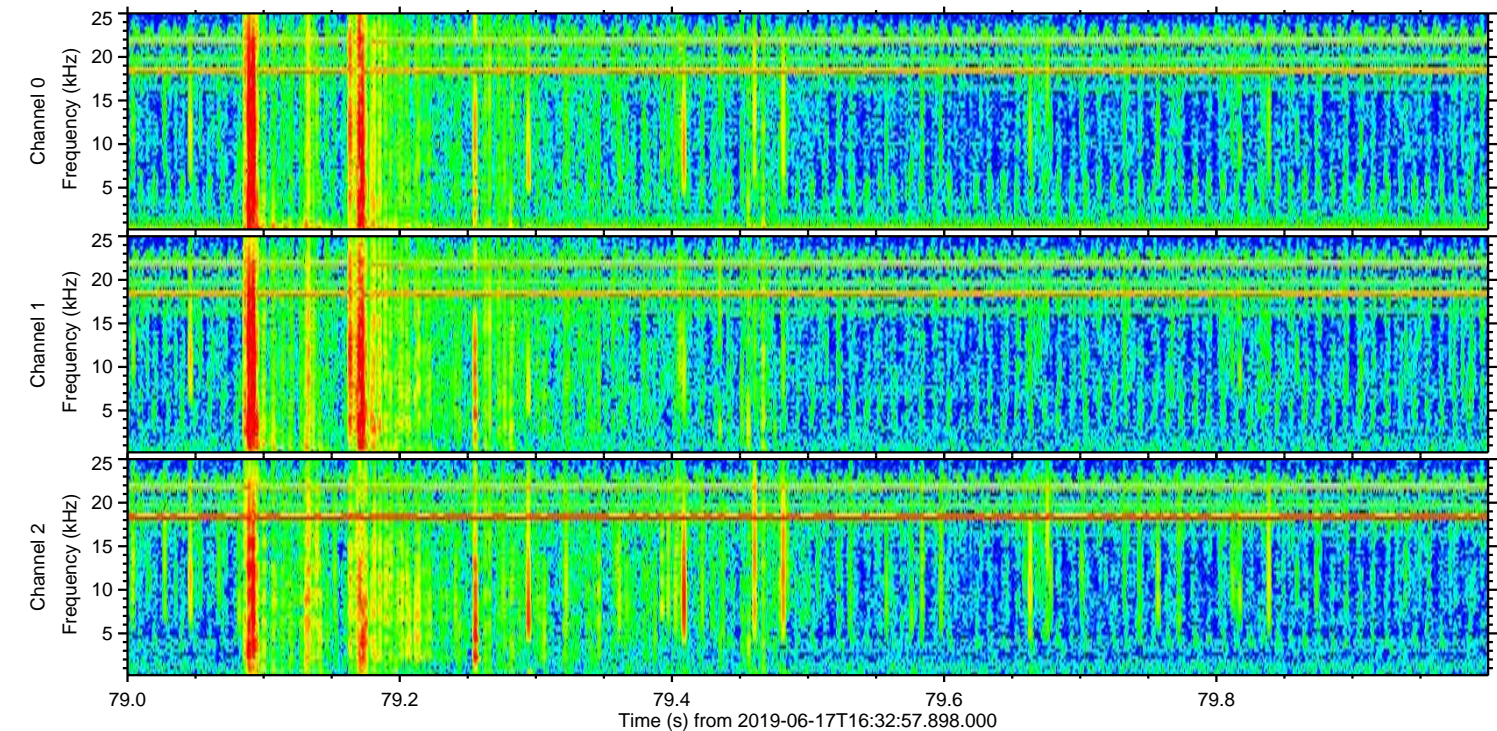
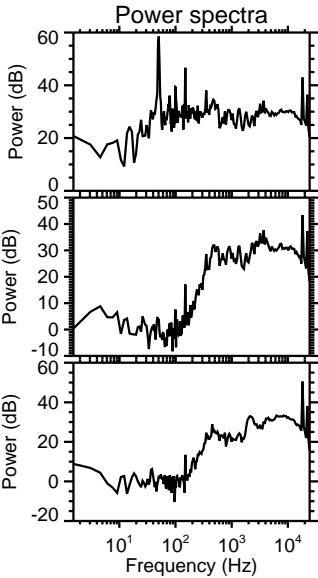
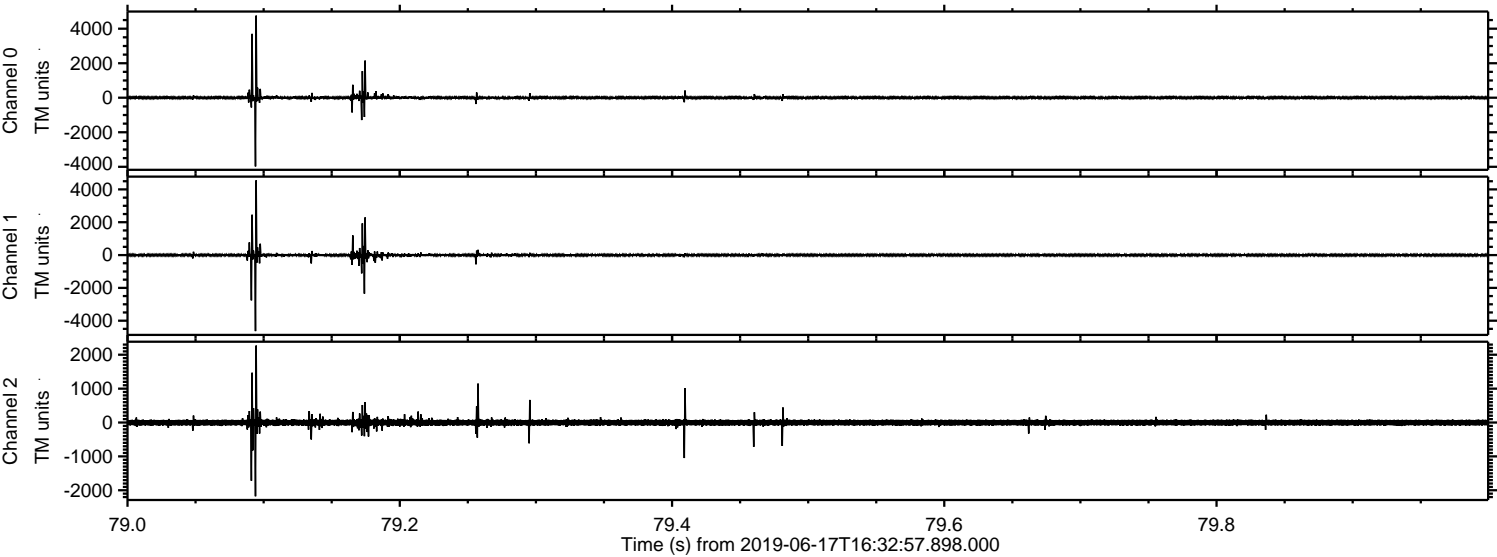


ELMAVAN 3D WAVEFORMS (Measured data sampled at 50 kHz) 51000 packets of 144 samples from 2019-06-17T16:32:57.898.000. Part 136/147

Processed Mon Jun 17 18:40:55 2019 by ELM ver.2012-10-06 from 001__elm20190617_163256__dat00.bin



Processed Mon Jun 17 18:40:55 2019 by ELM ver.2012-10-06 from 001__elm20190617_163256__dat00.bin



Channel 0
mn: -3978
mx: 4758
 μ : 4.3
 σ : 50.9

Channel 1
mn: -4635
mx: 4552
 μ : -3.5
 σ : 53.5

Channel 2
mn: -2178
mx: 2271
 μ : -2.8
 σ : 54.8

Processed Mon Jun 17 18:40:56 2019 by ELM ver.2012-10-06 from 001__elm20190617_163256__dat00.bin

