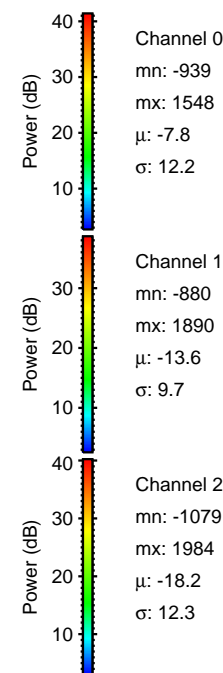
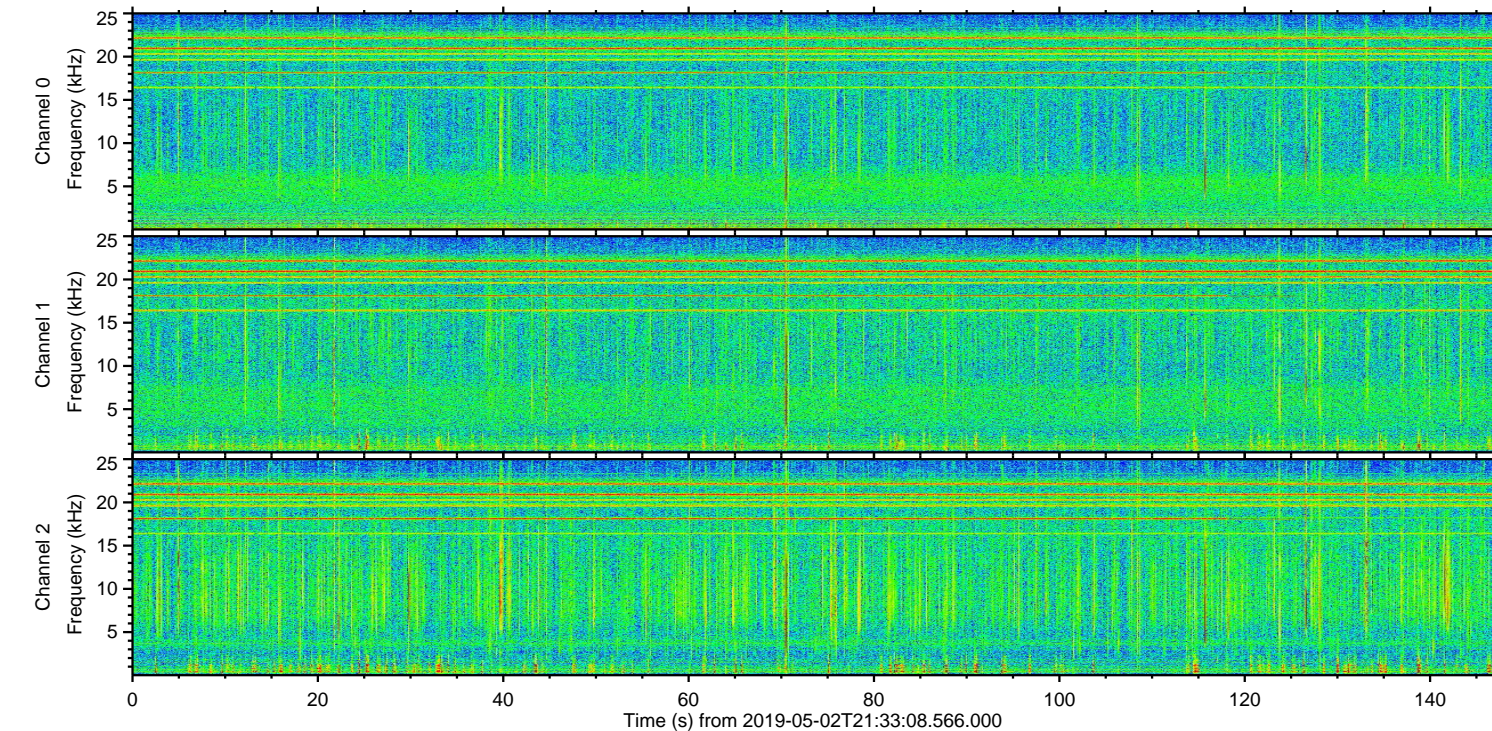
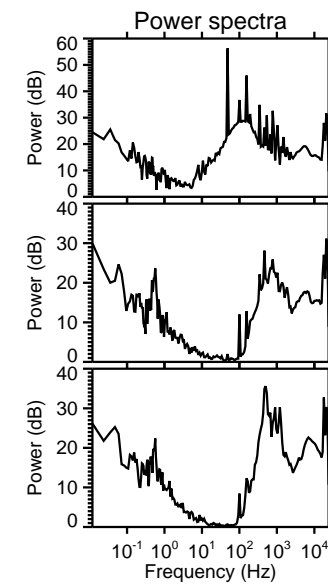
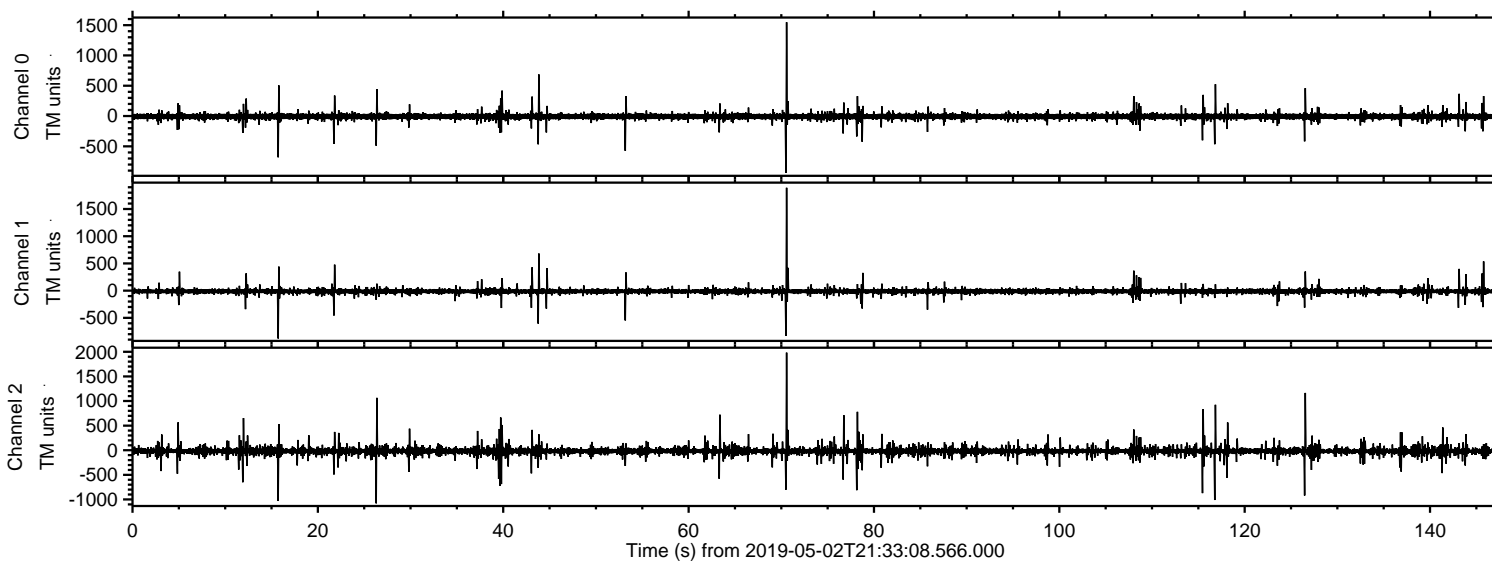


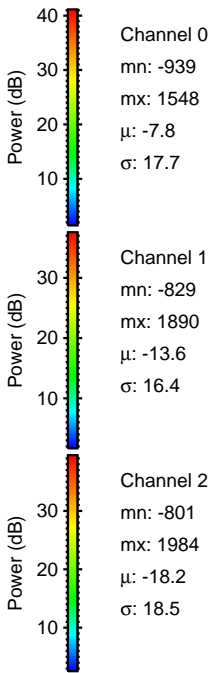
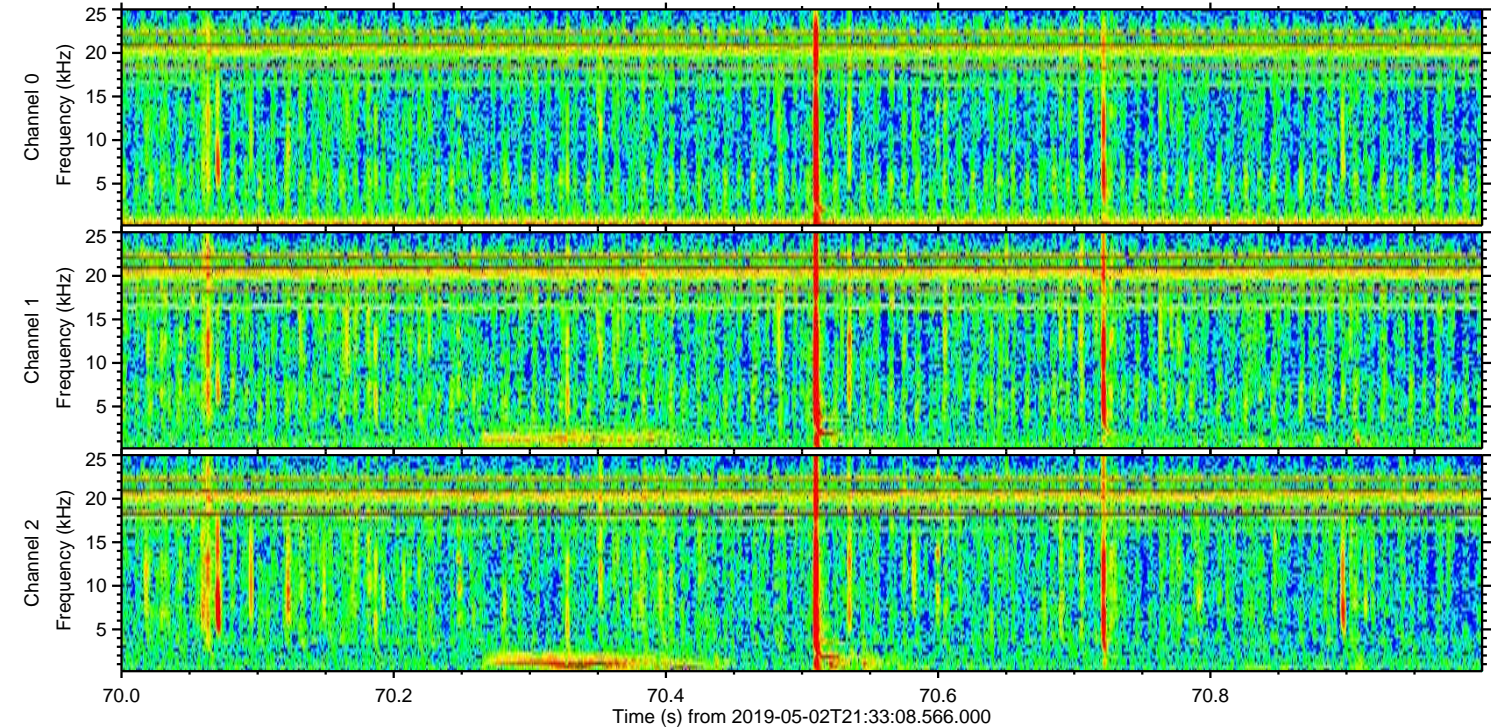
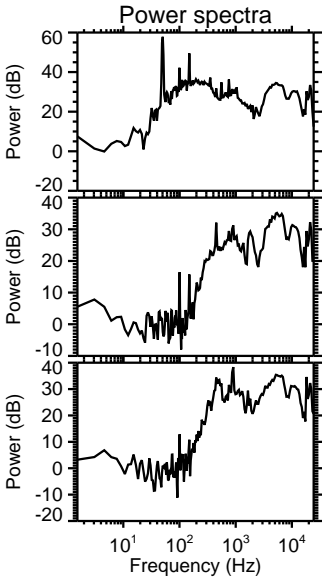
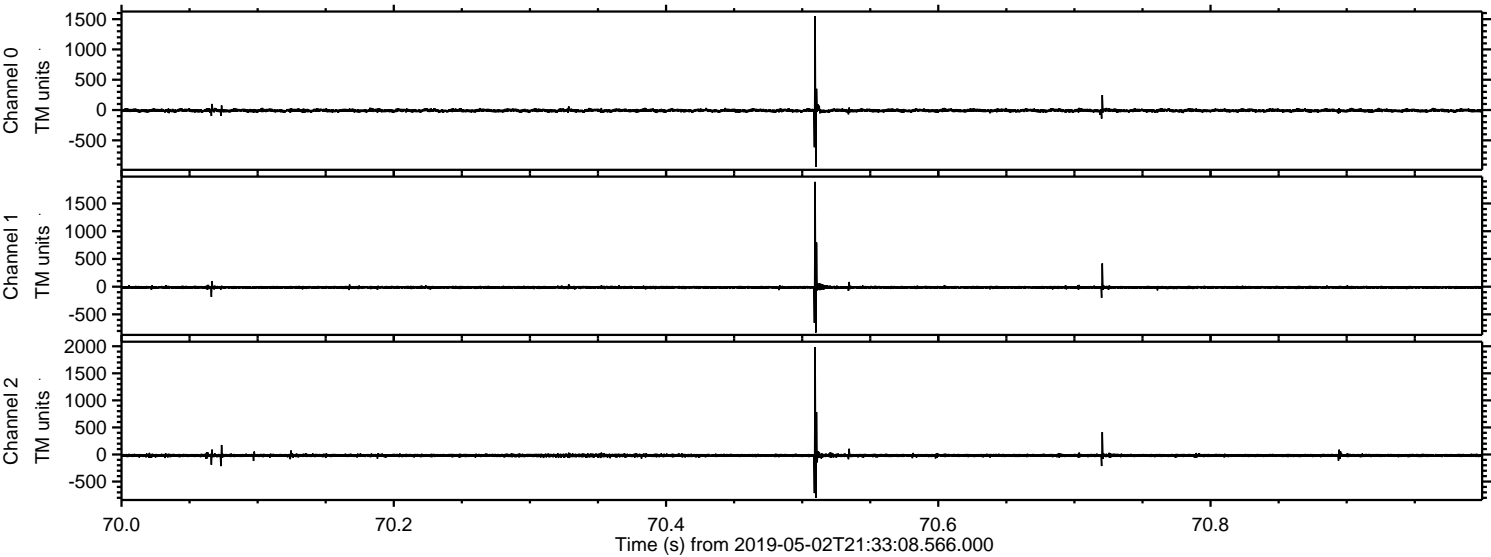
# ELMAVAN 3D WAVEFORMS (Measured data sampled at 50 kHz) 51000 packets of 144 samples from 2019-05-02T21:33:08.566.000.

Processed Thu May 2 23:41:24 2019 by ELM ver.2012-10-06 from 001\_\_elm20190502\_213307\_\_dat00.bin



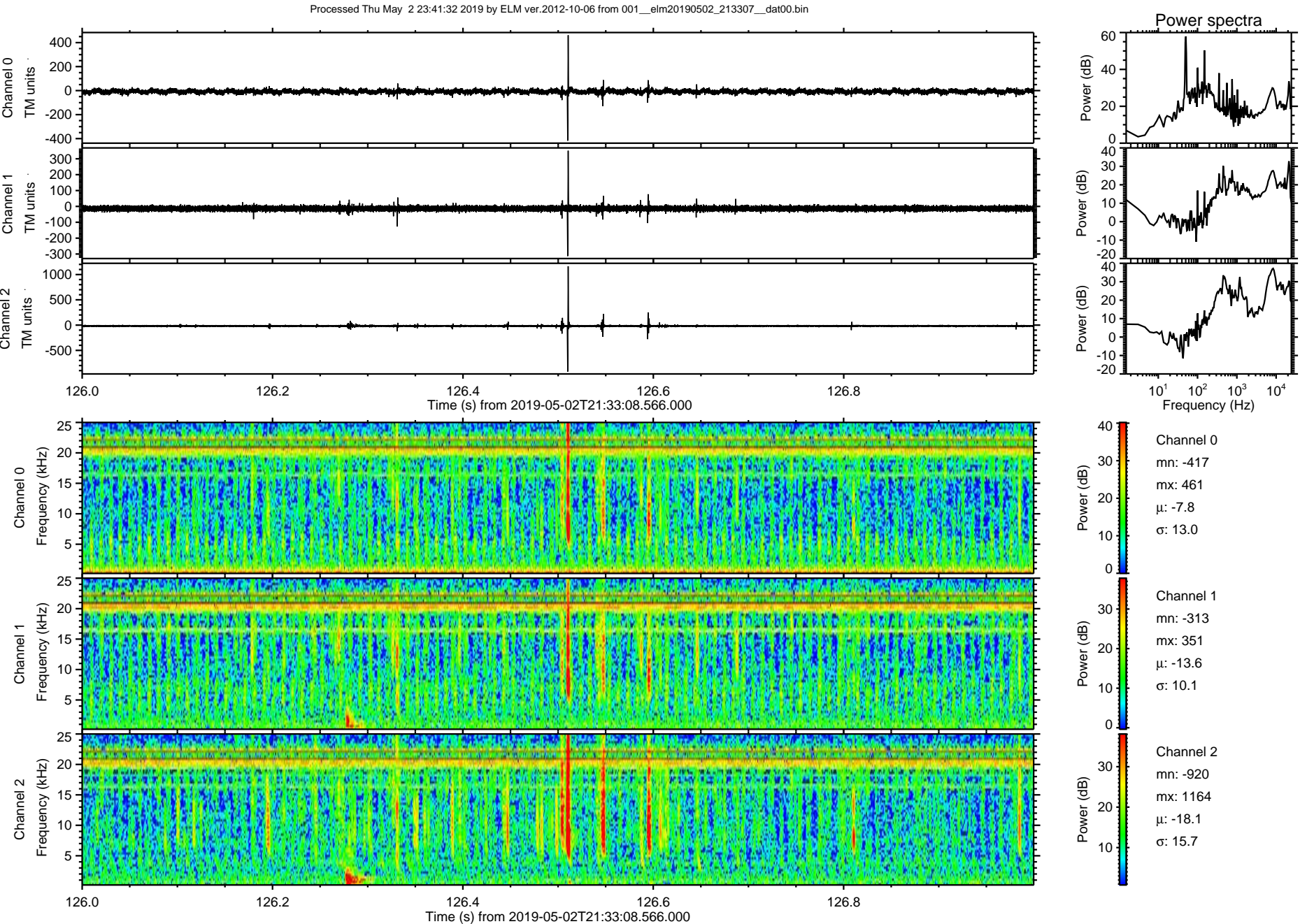


Processed Thu May 2 23:41:32 2019 by ELM ver.2012-10-06 from 001\_\_elm20190502\_213307\_\_dat00.bin



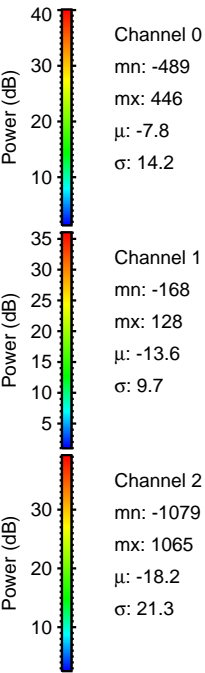
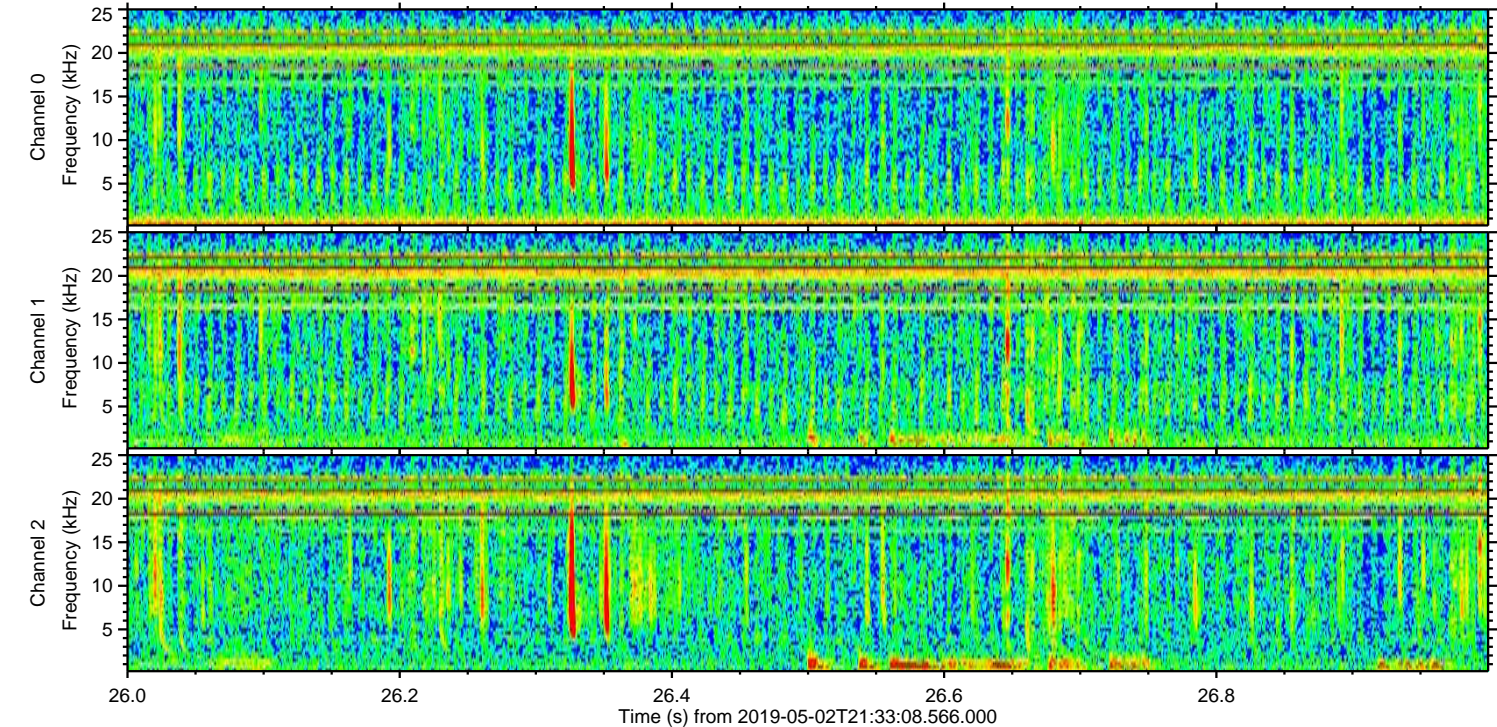
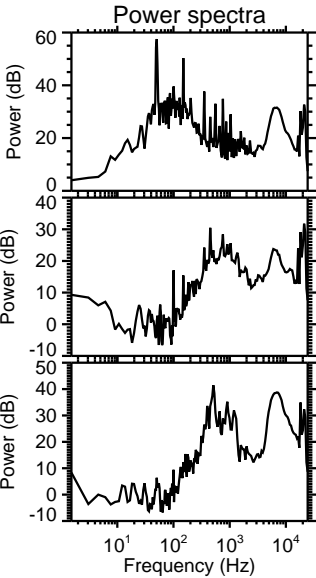
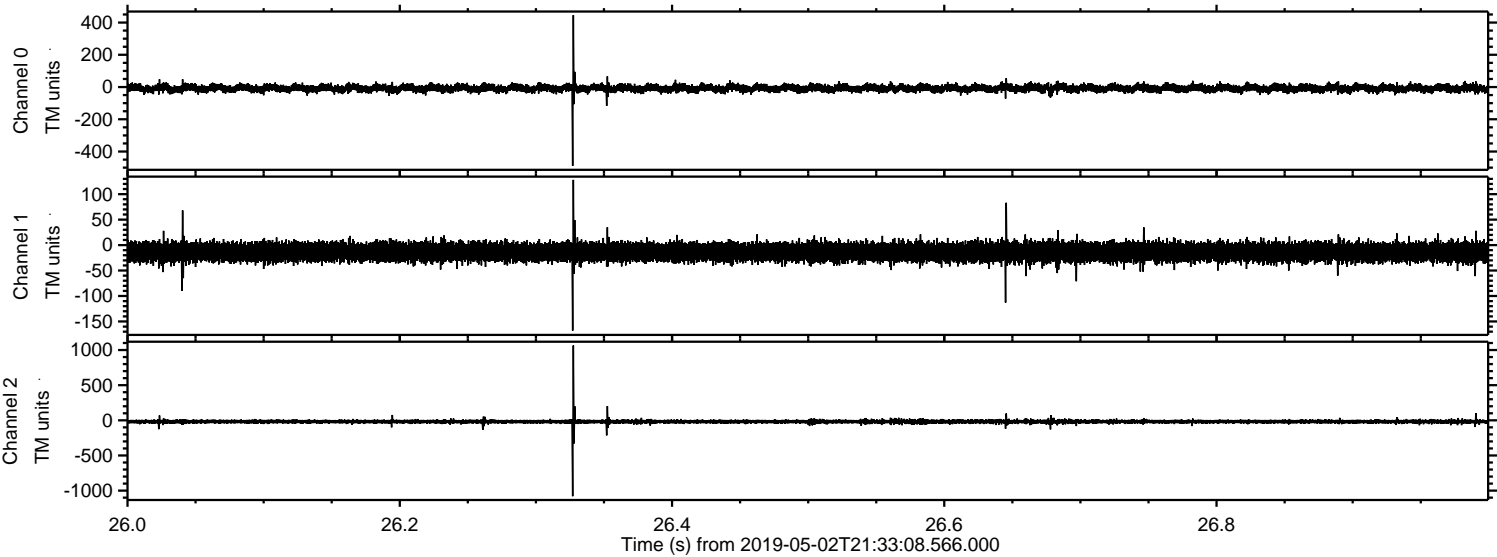


ELMAVAN 3D WAVEFORMS (Measured data sampled at 50 kHz) 51000 packets of 144 samples from 2019-05-02T21:33:08.566.000. Part 127/147



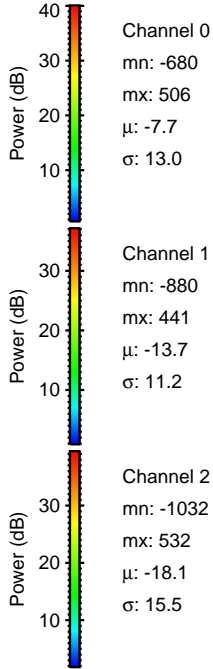
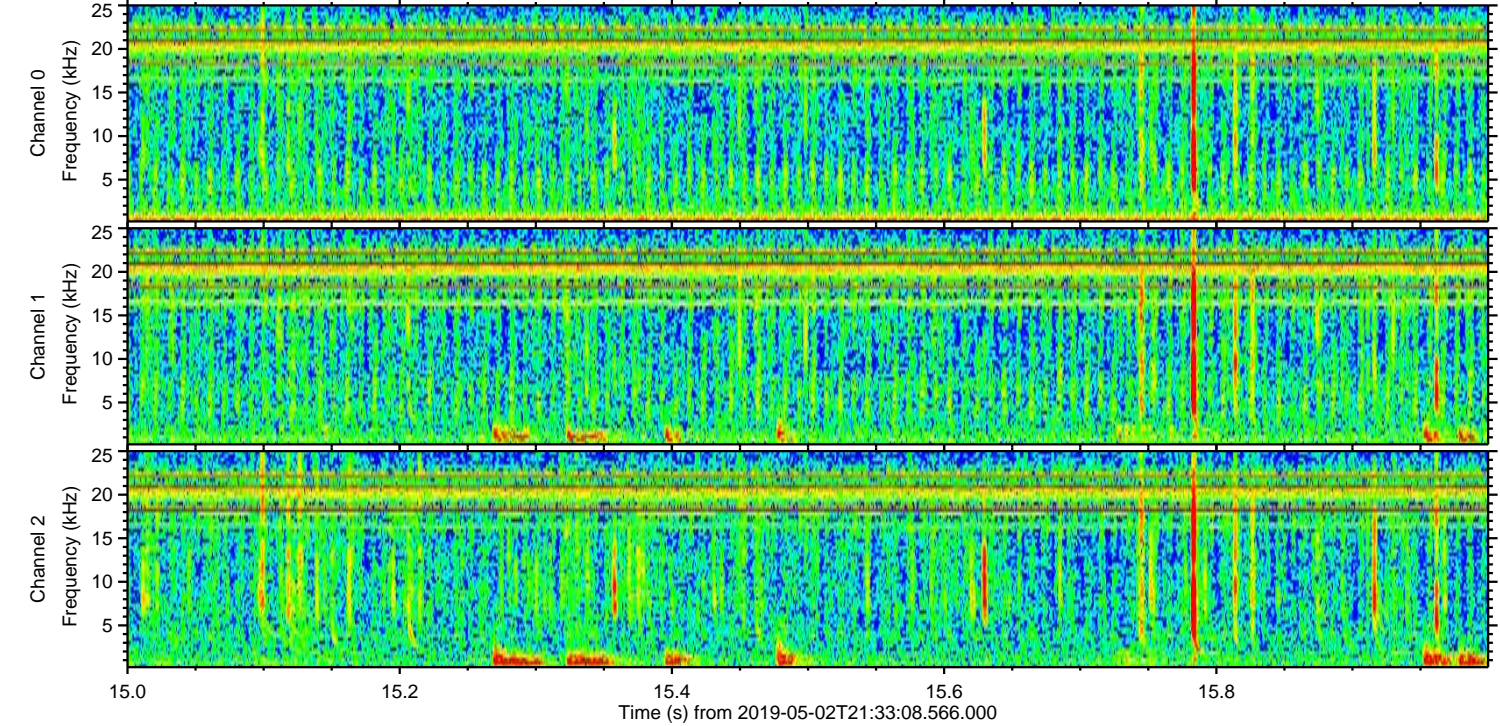
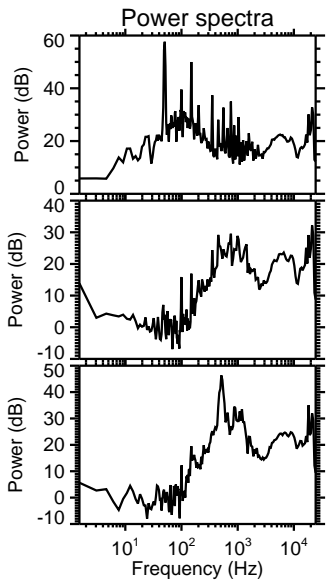
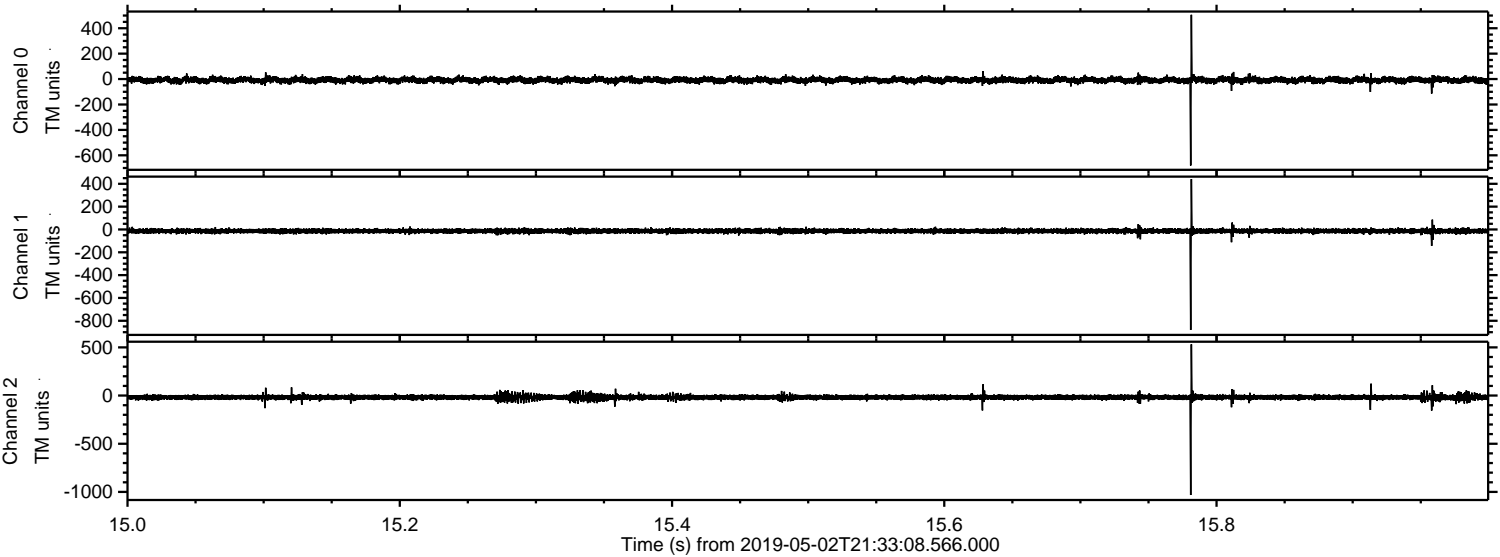


Processed Thu May 2 23:41:33 2019 by ELM ver.2012-10-06 from 001\_\_elm20190502\_213307\_\_dat00.bin





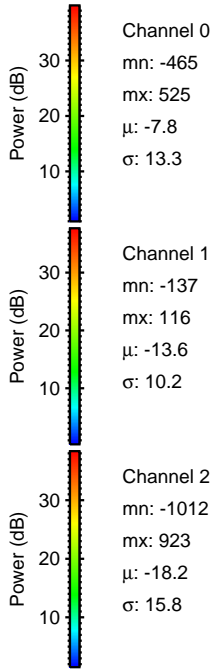
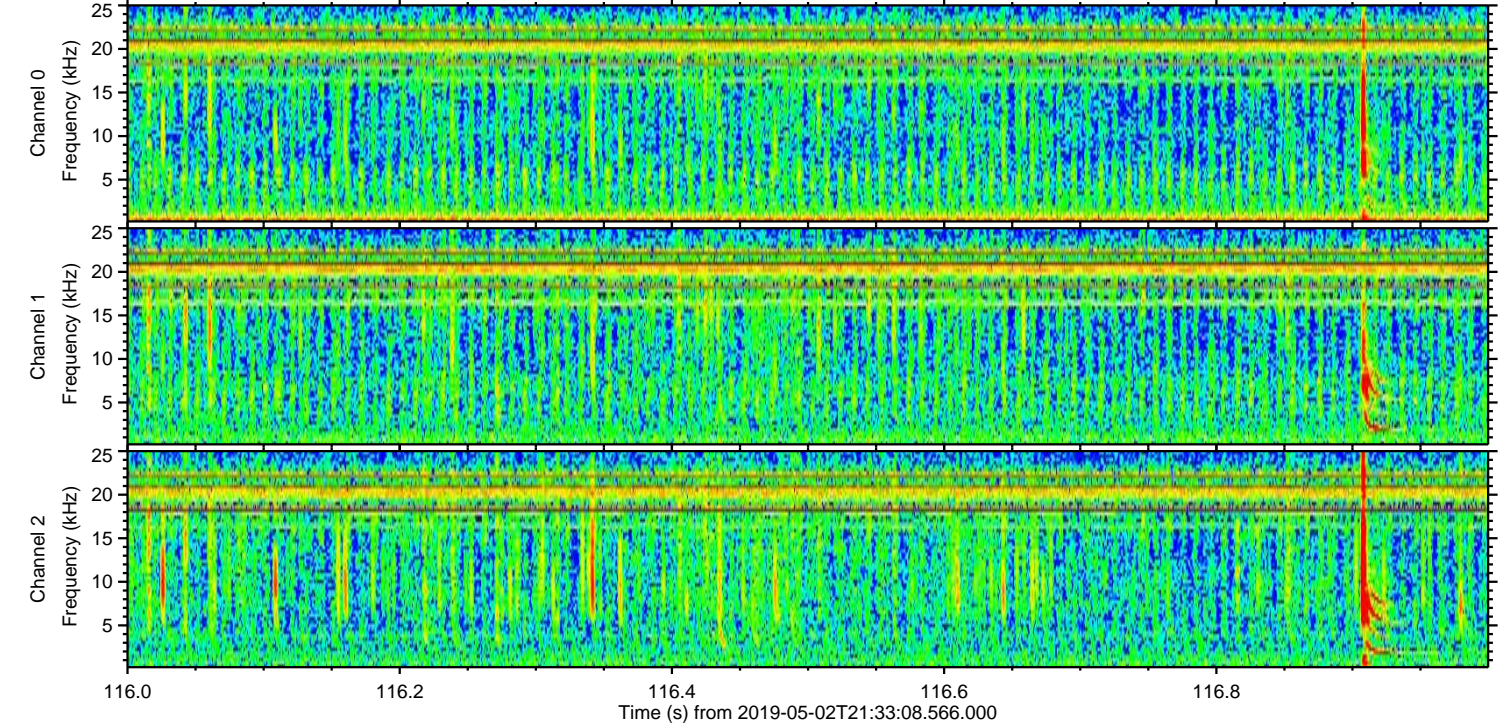
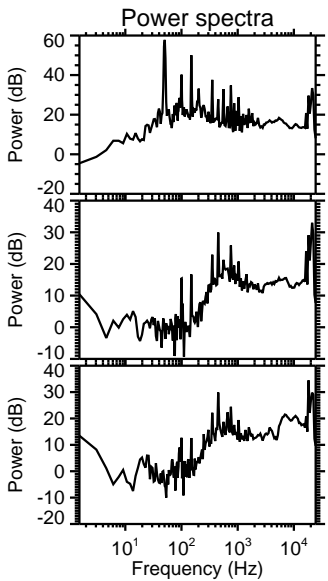
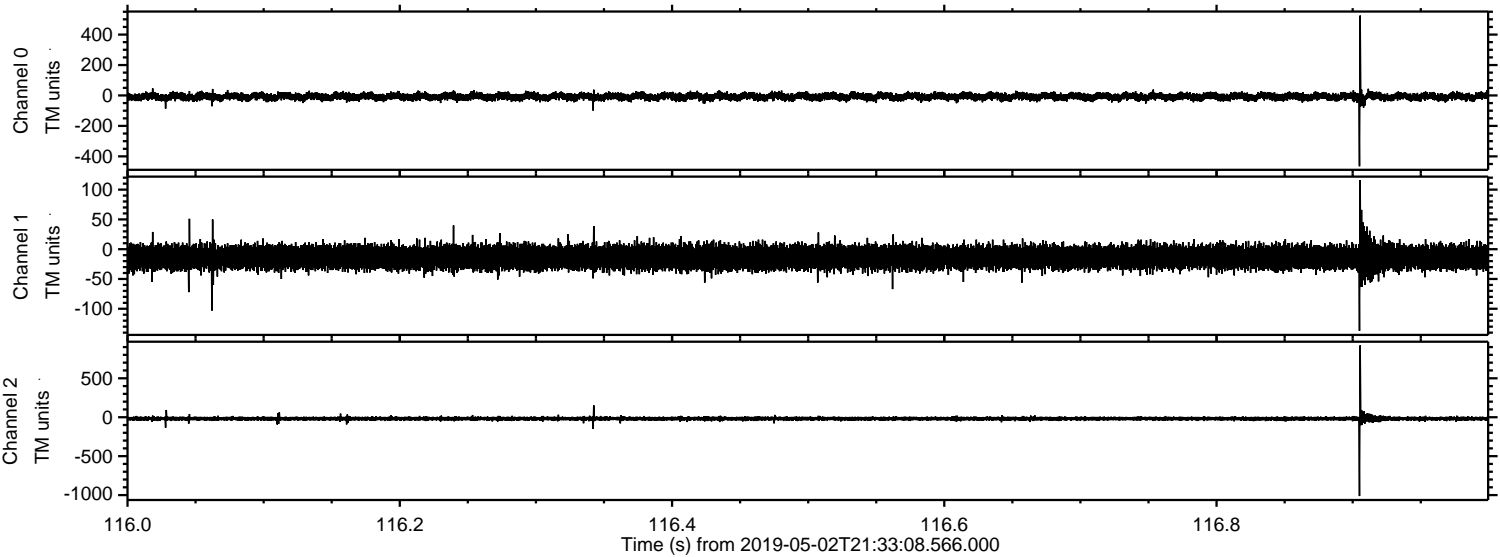
Processed Thu May 2 23:41:34 2019 by ELM ver.2012-10-06 from 001\_\_elm20190502\_213307\_\_dat00.bin





ELMAVAN 3D WAVEFORMS (Measured data sampled at 50 kHz) 51000 packets of 144 samples from 2019-05-02T21:33:08.566.000. Part 117/147

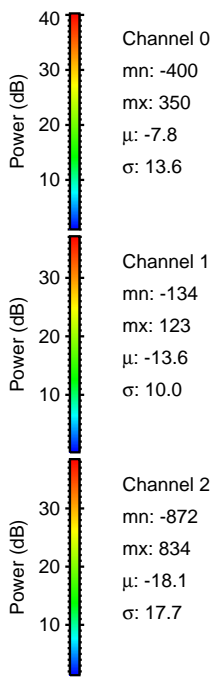
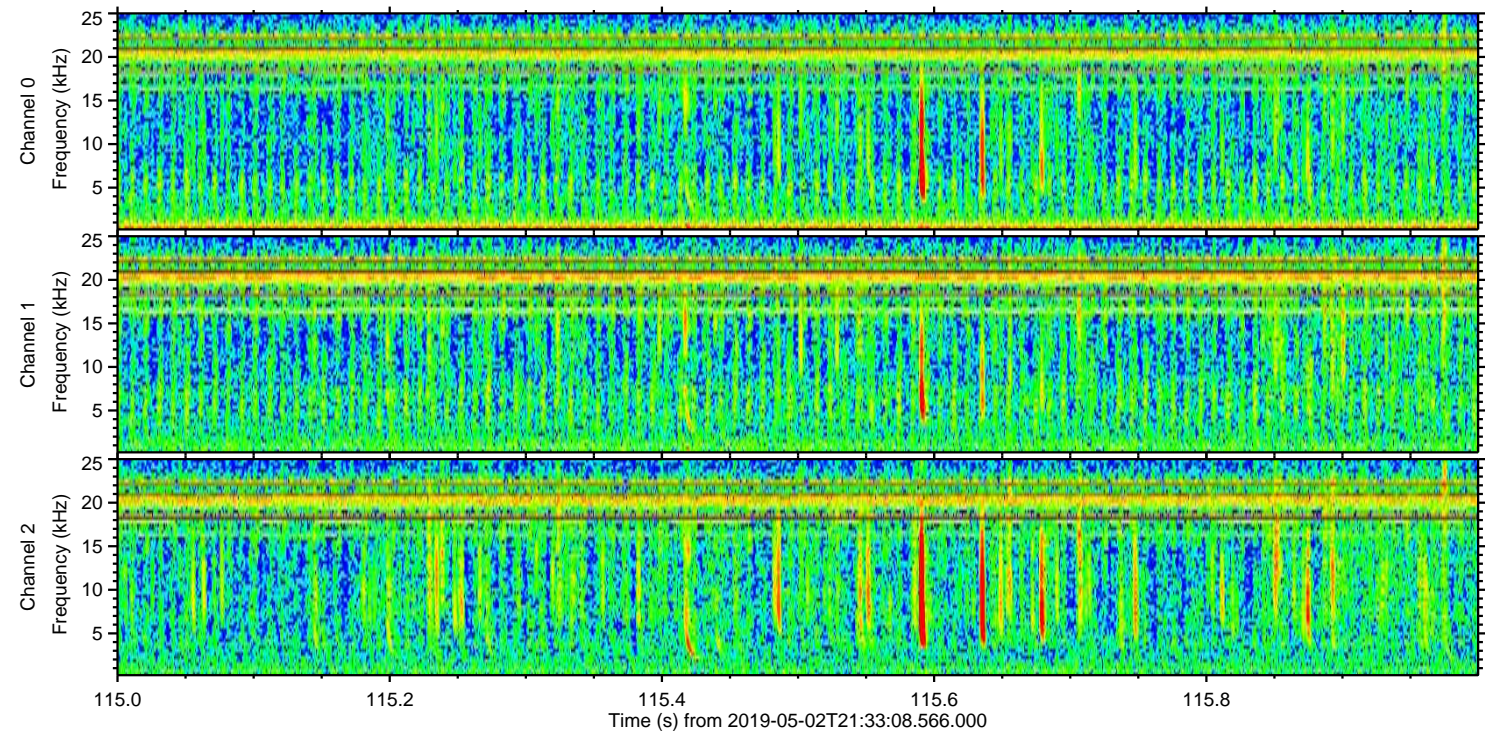
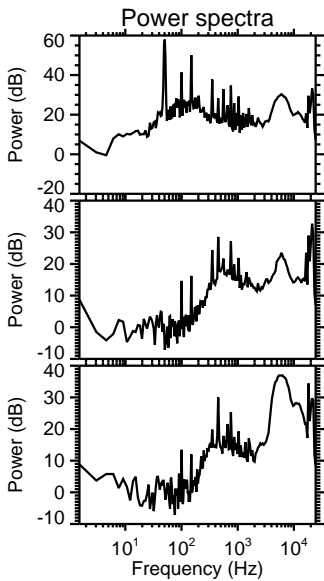
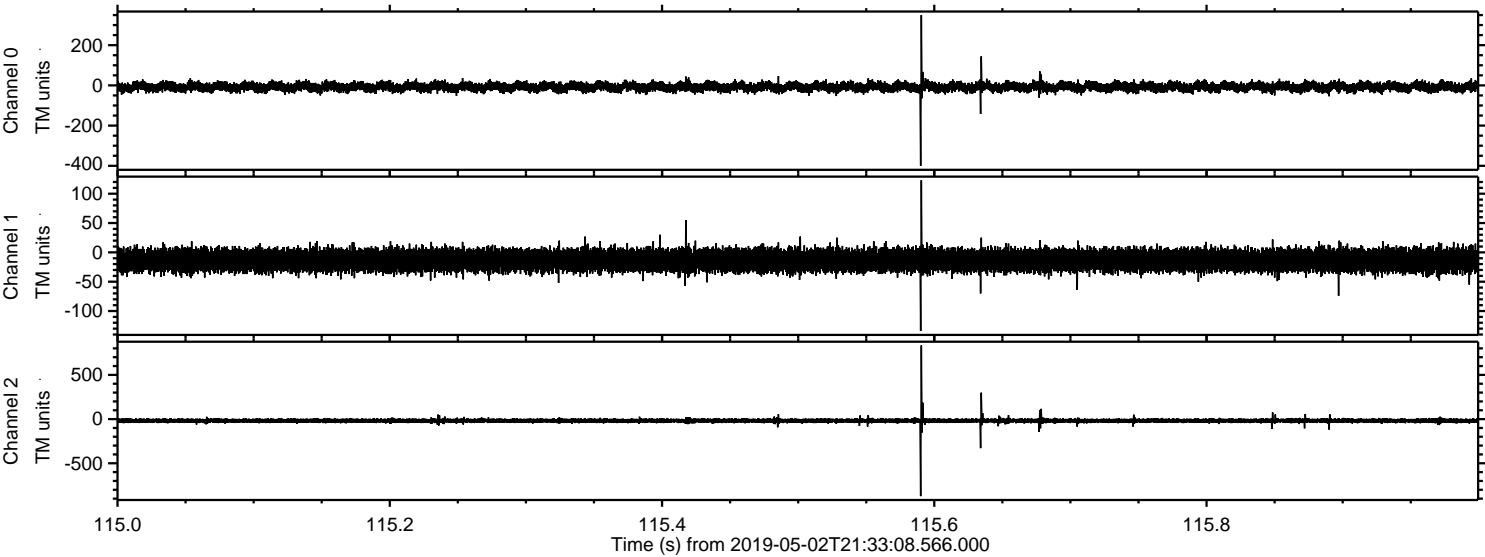
Processed Thu May 2 23:41:35 2019 by ELM ver.2012-10-06 from 001\_\_elm20190502\_213307\_\_dat00.bin





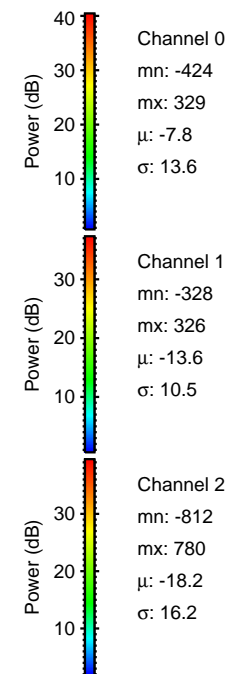
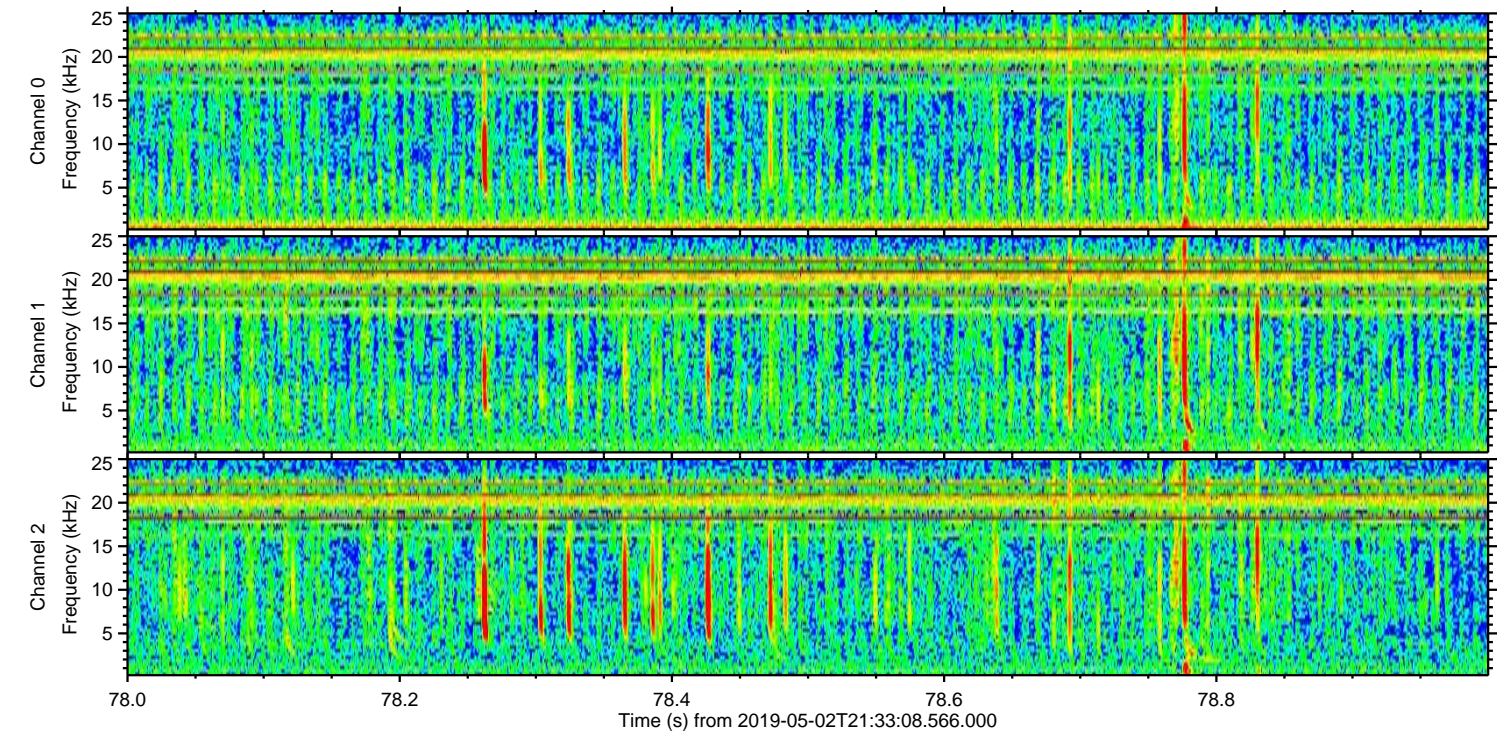
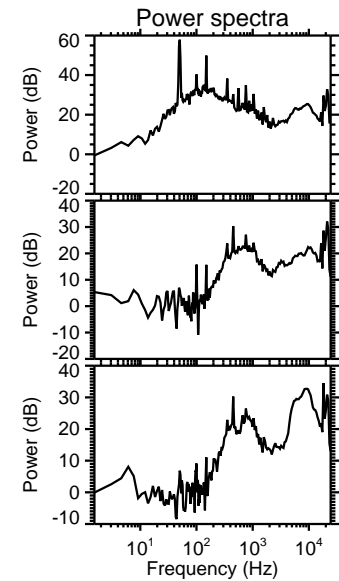
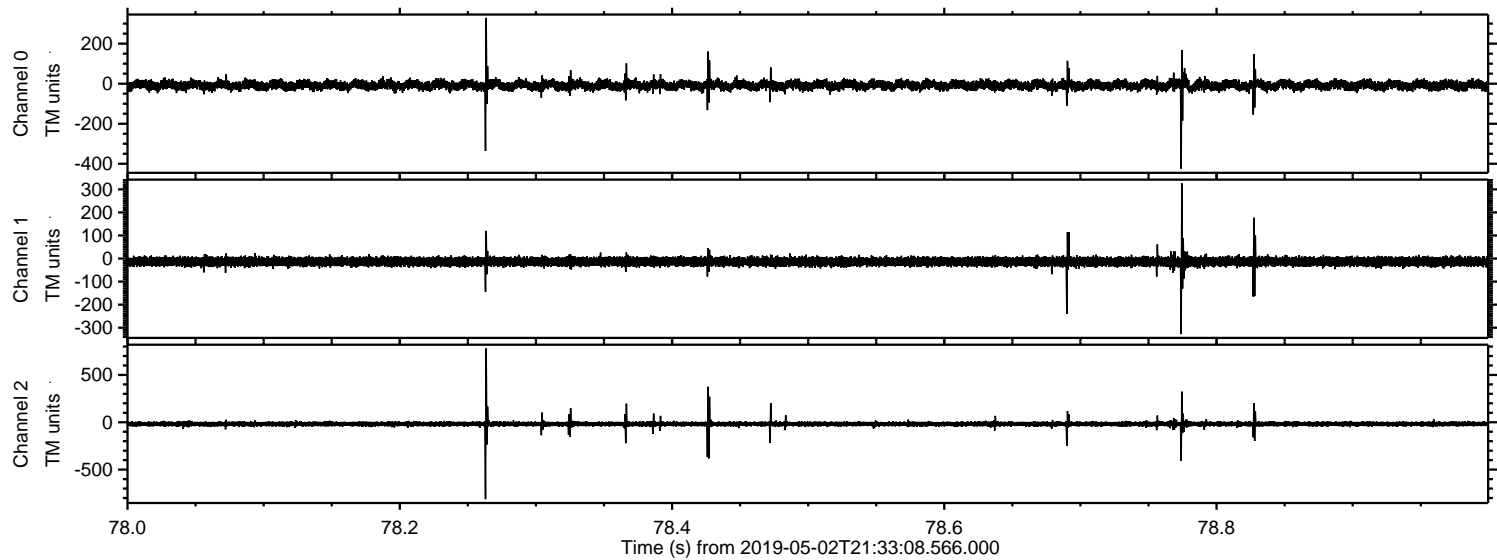
ELMAVAN 3D WAVEFORMS (Measured data sampled at 50 kHz) 51000 packets of 144 samples from 2019-05-02T21:33:08.566.000. Part 116/147

Processed Thu May 2 23:41:36 2019 by ELM ver.2012-10-06 from 001\_\_elm20190502\_213307\_\_dat00.bin



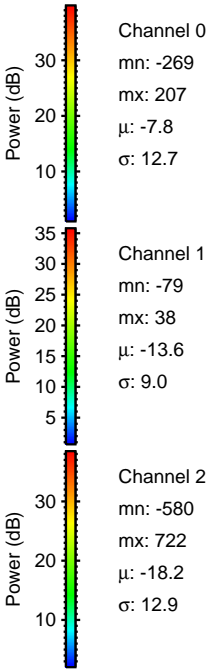
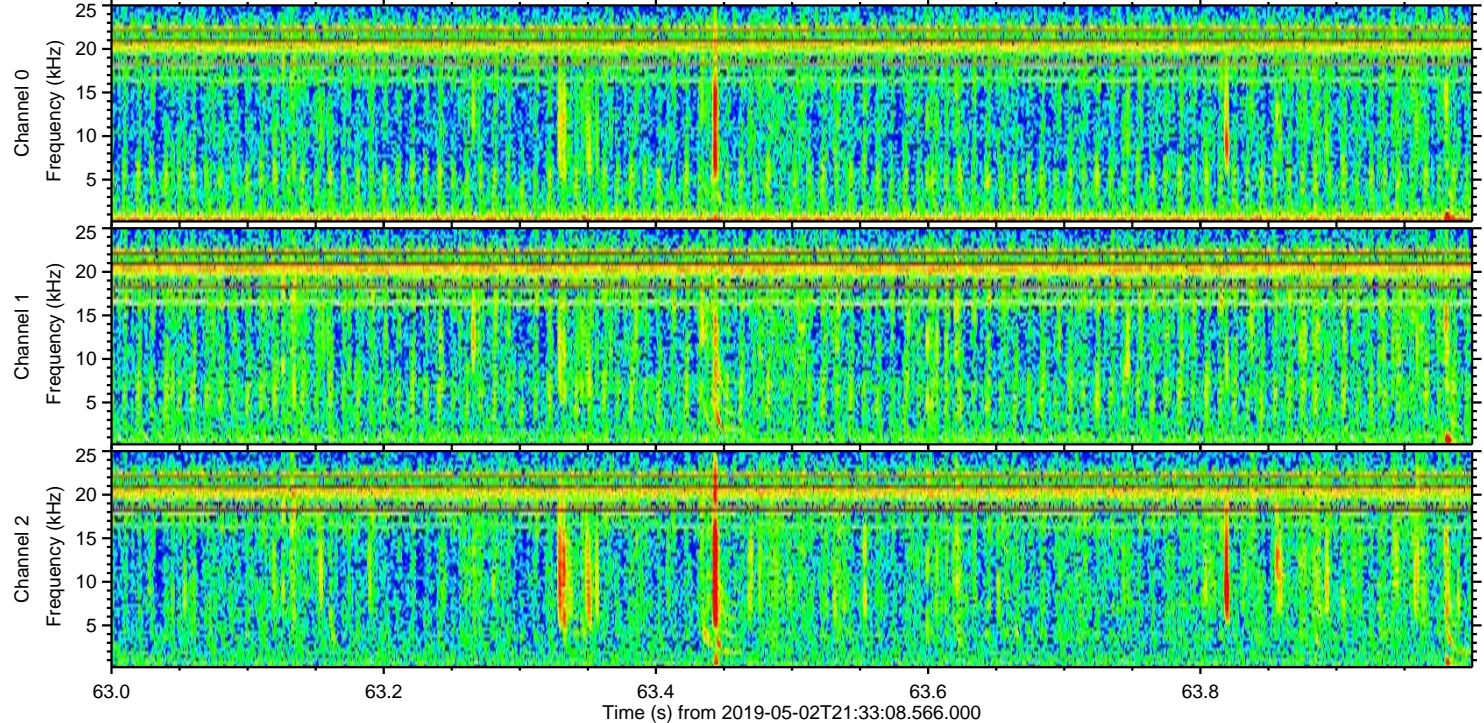
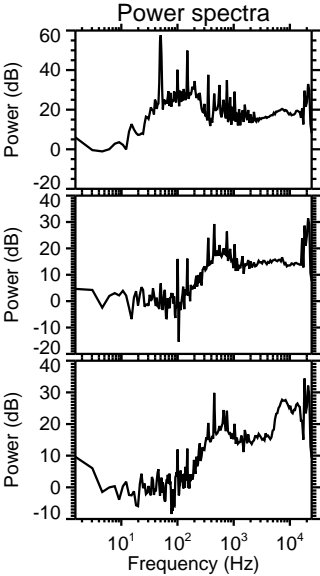
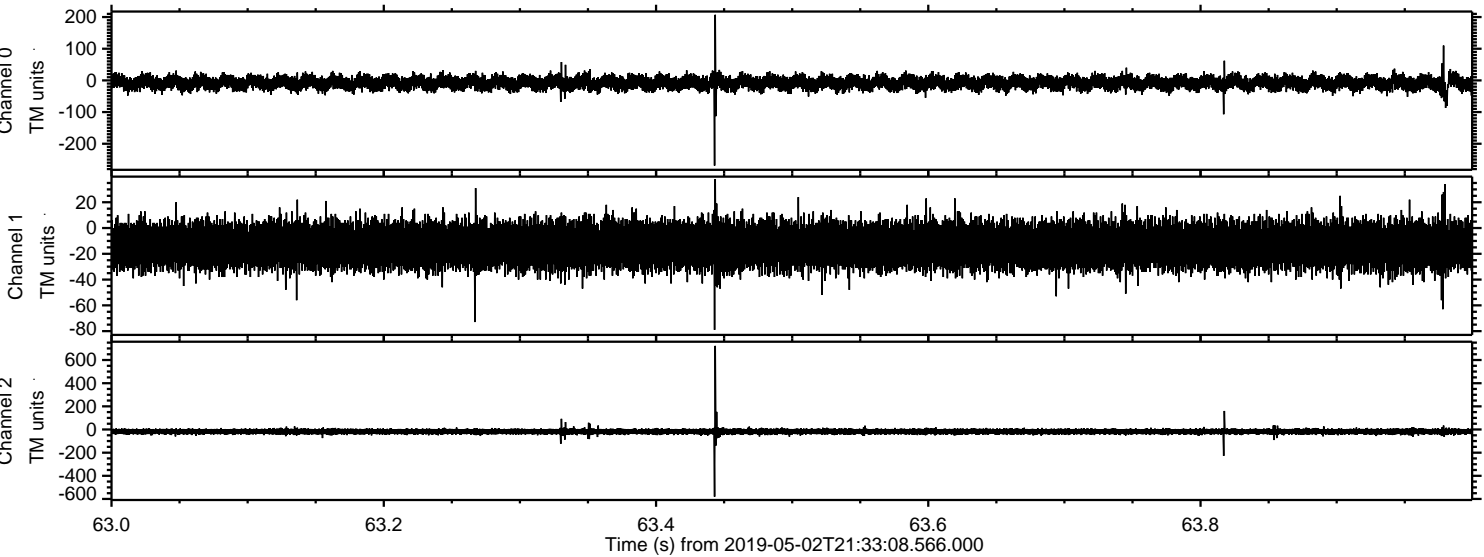


Processed Thu May 2 23:41:37 2019 by ELM ver.2012-10-06 from 001\_\_elm20190502\_213307\_\_dat00.bin





Processed Thu May 2 23:41:37 2019 by ELM ver.2012-10-06 from 001\_\_elm20190502\_213307\_\_dat00.bin





Processed Thu May 2 23:41:38 2019 by ELM ver.2012-10-06 from 001\_\_elm20190502\_213307\_\_dat00.bin

