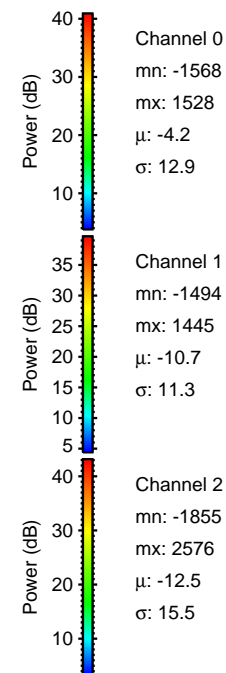
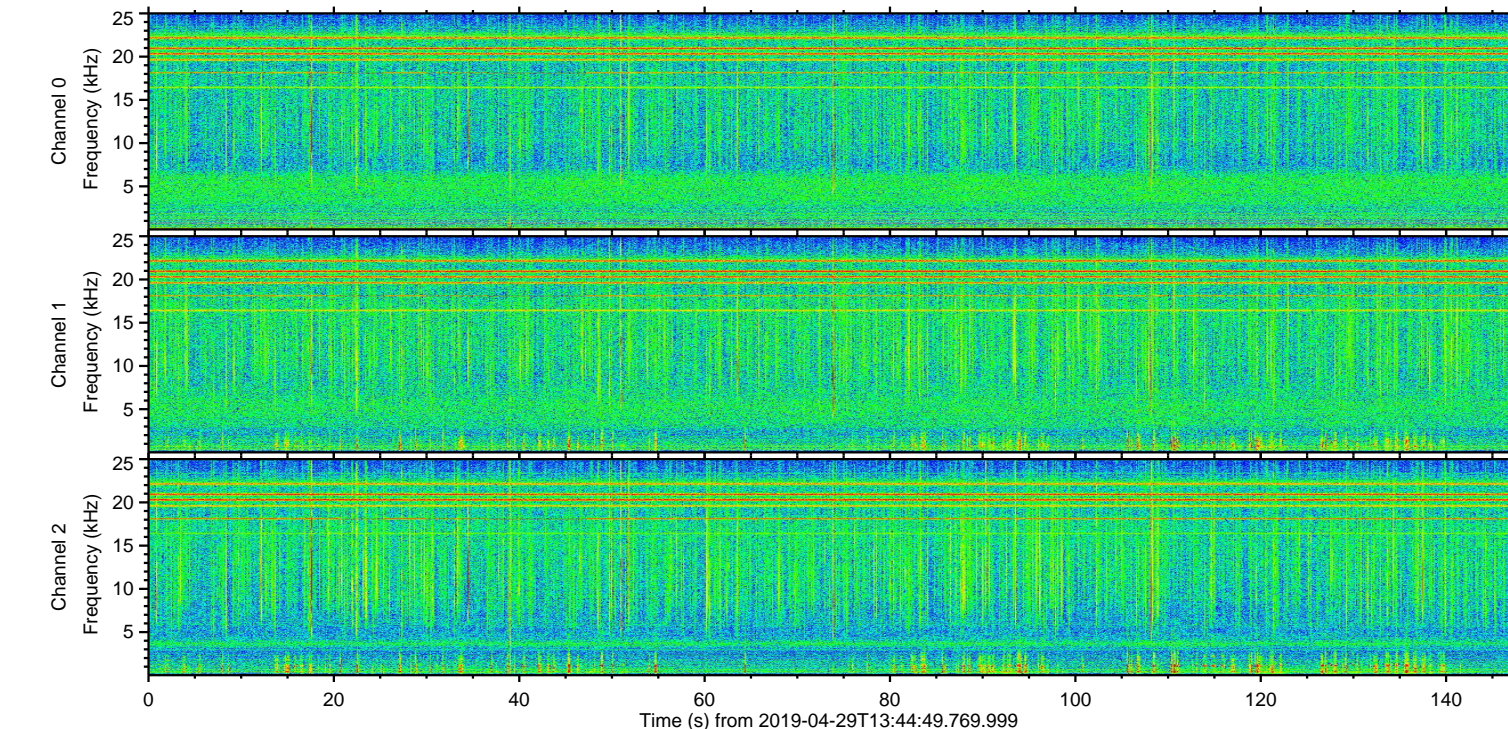
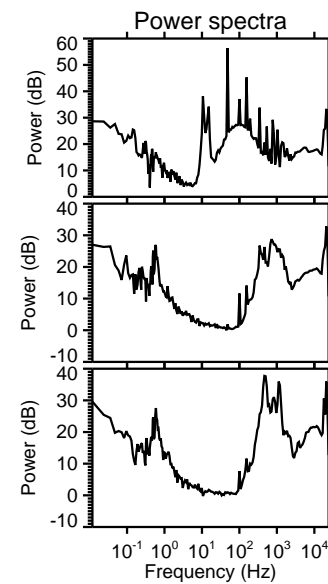
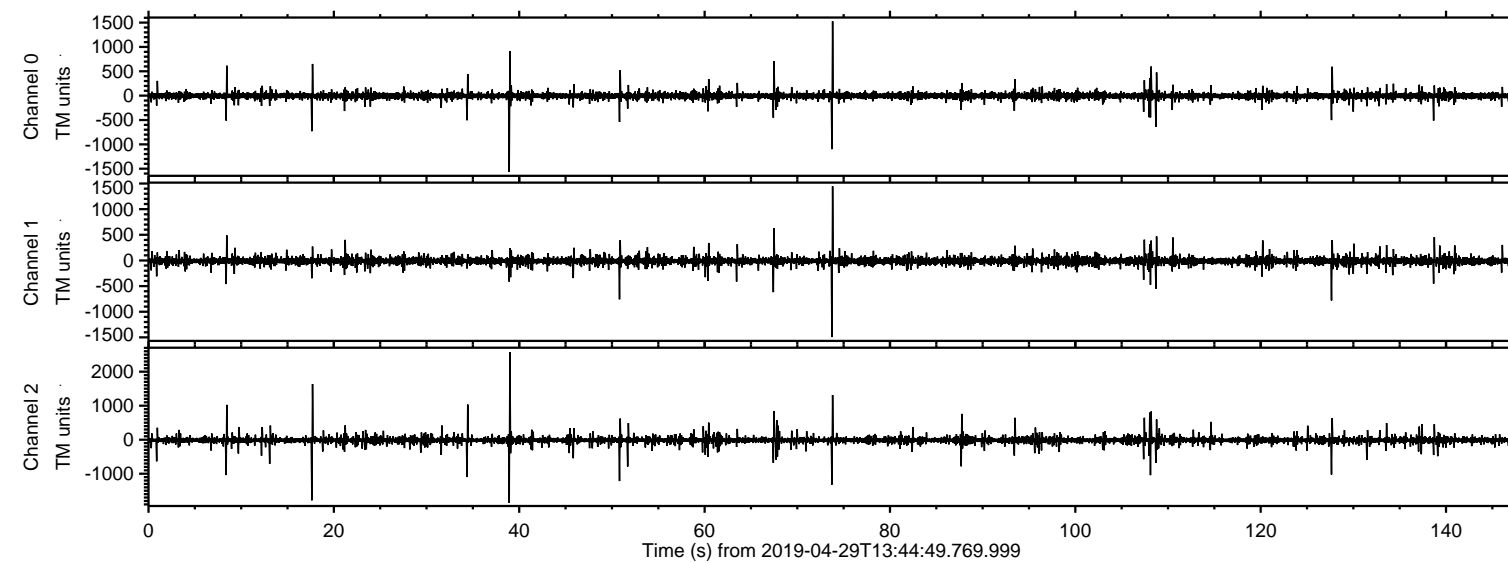
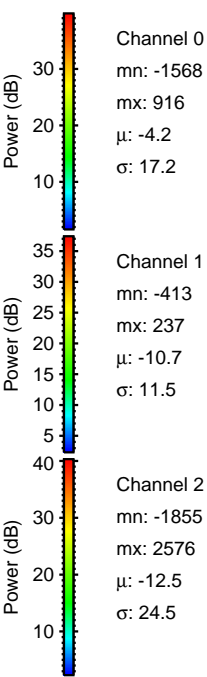
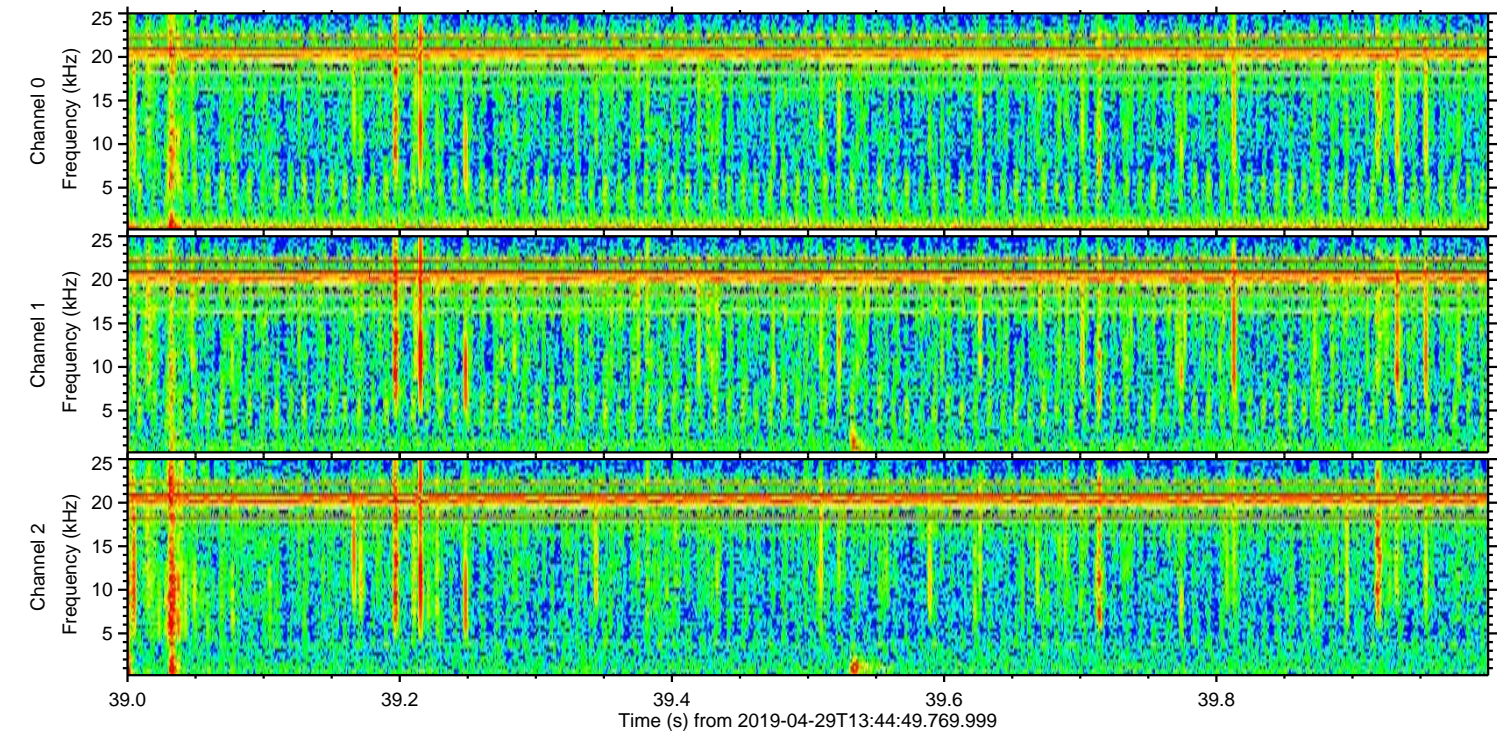
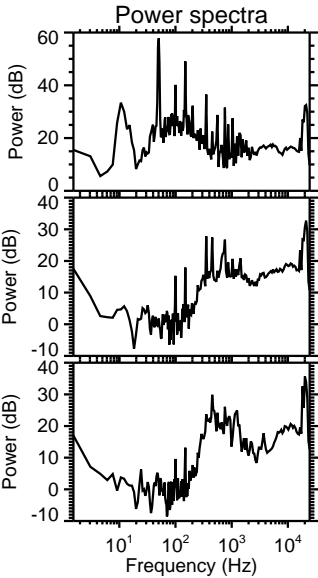
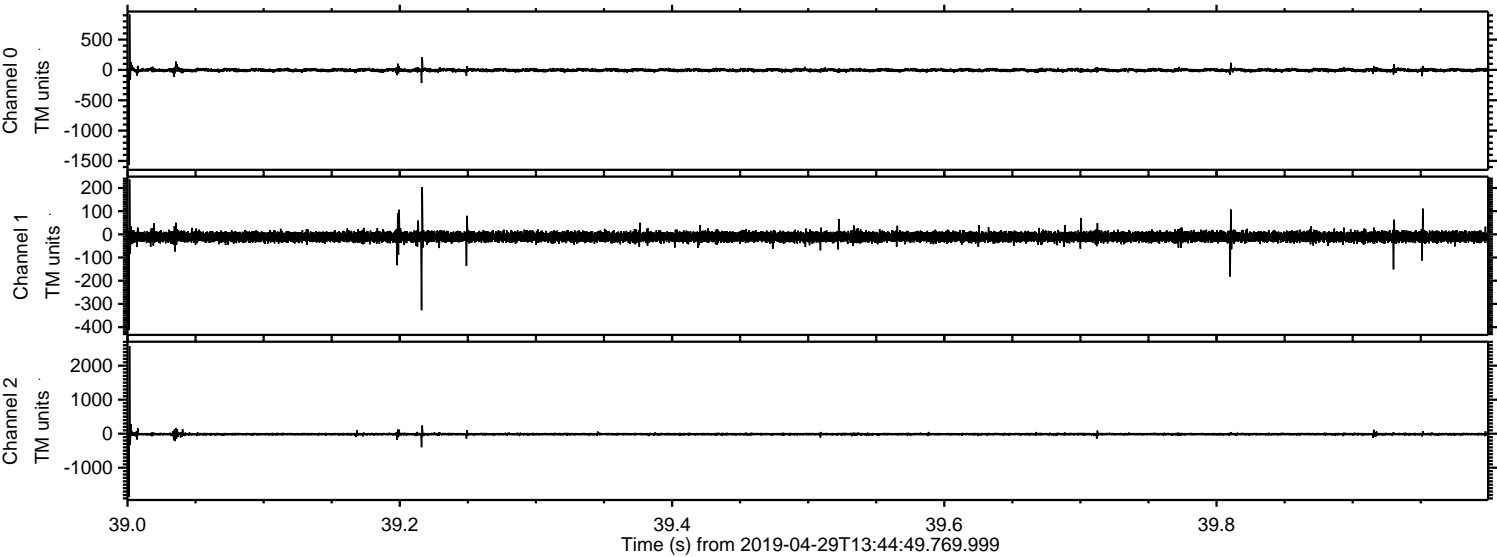


ELMAVAN 3D WAVEFORMS (Measured data sampled at 50 kHz) 51000 packets of 144 samples from 2019-04-29T13:44:49.769.999.

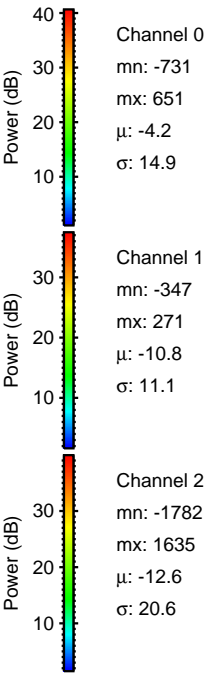
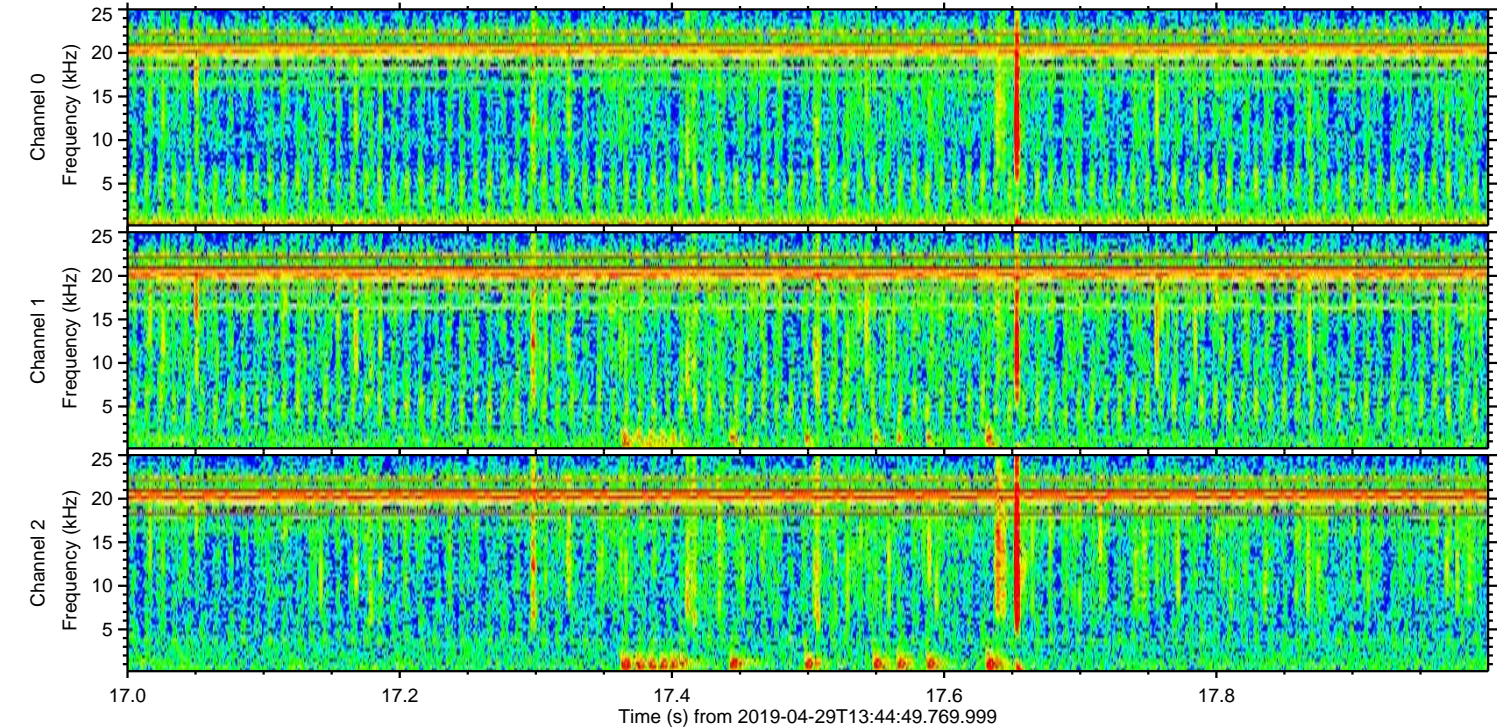
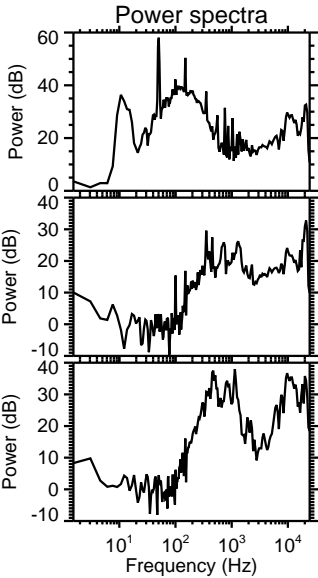
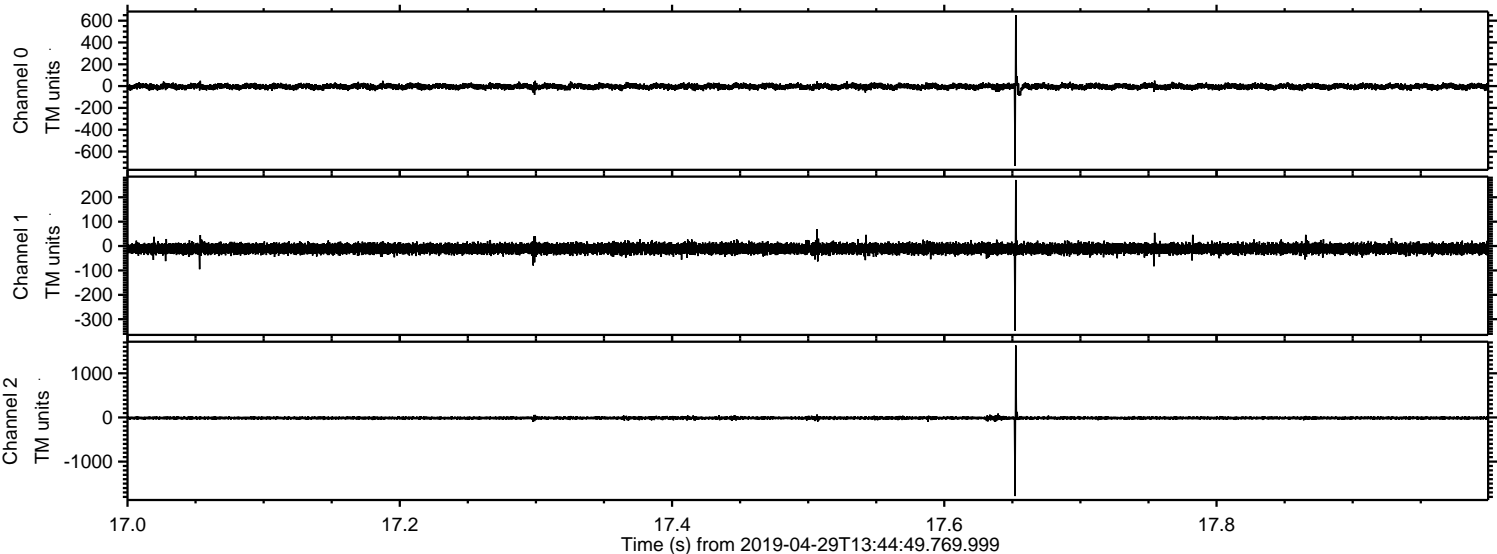
Processed Mon Apr 29 15:53:01 2019 by ELM ver.2012-10-06 from 001__elm20190429_134448__dat00.bin



Processed Mon Apr 29 15:53:07 2019 by ELM ver.2012-10-06 from 001__elm20190429_134448__dat00.bin

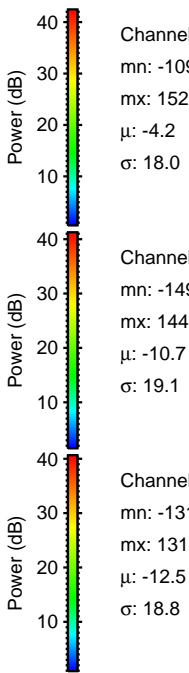
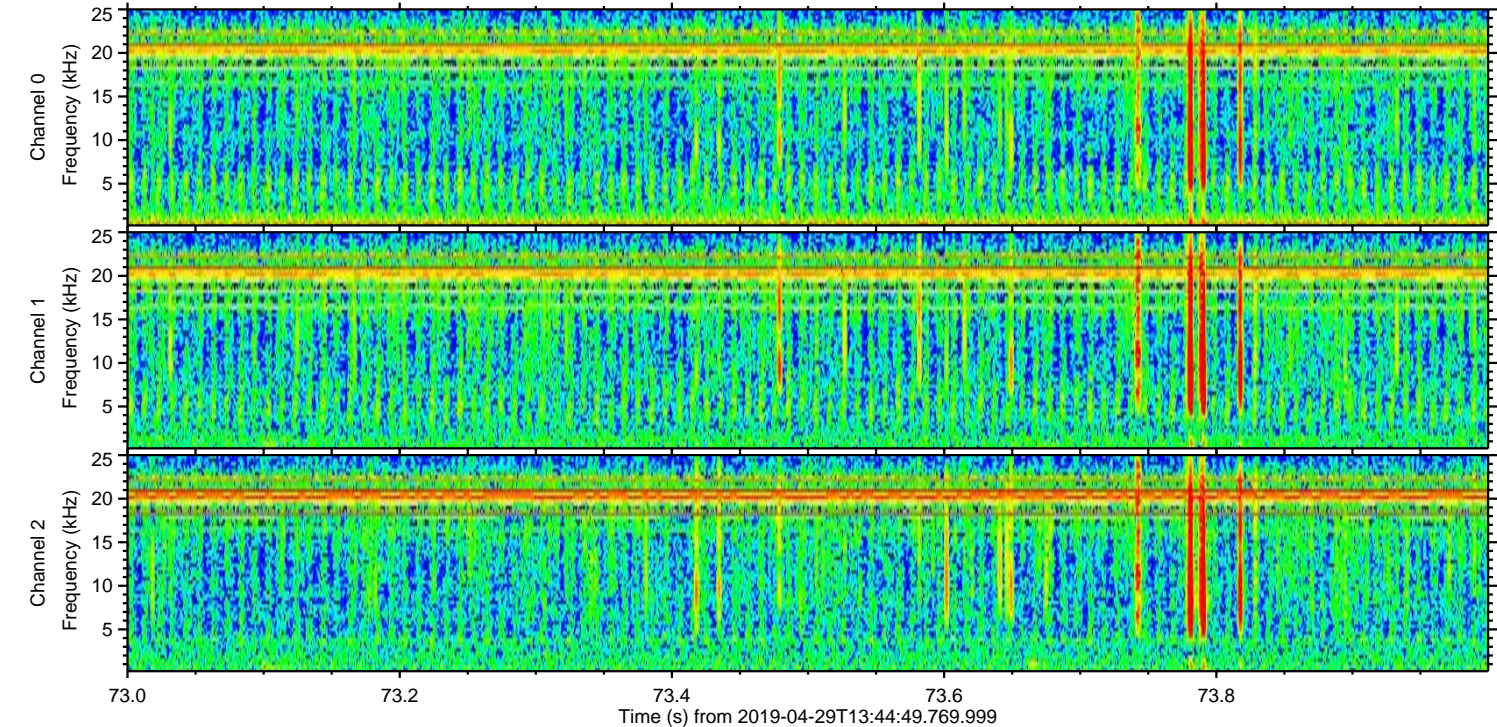
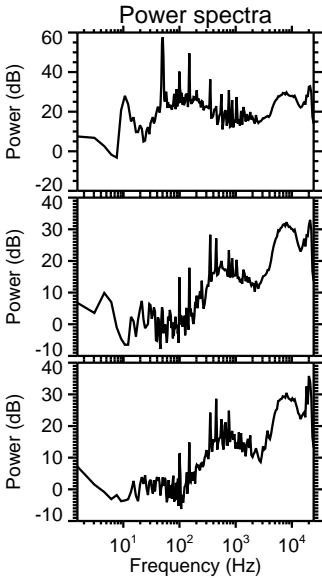
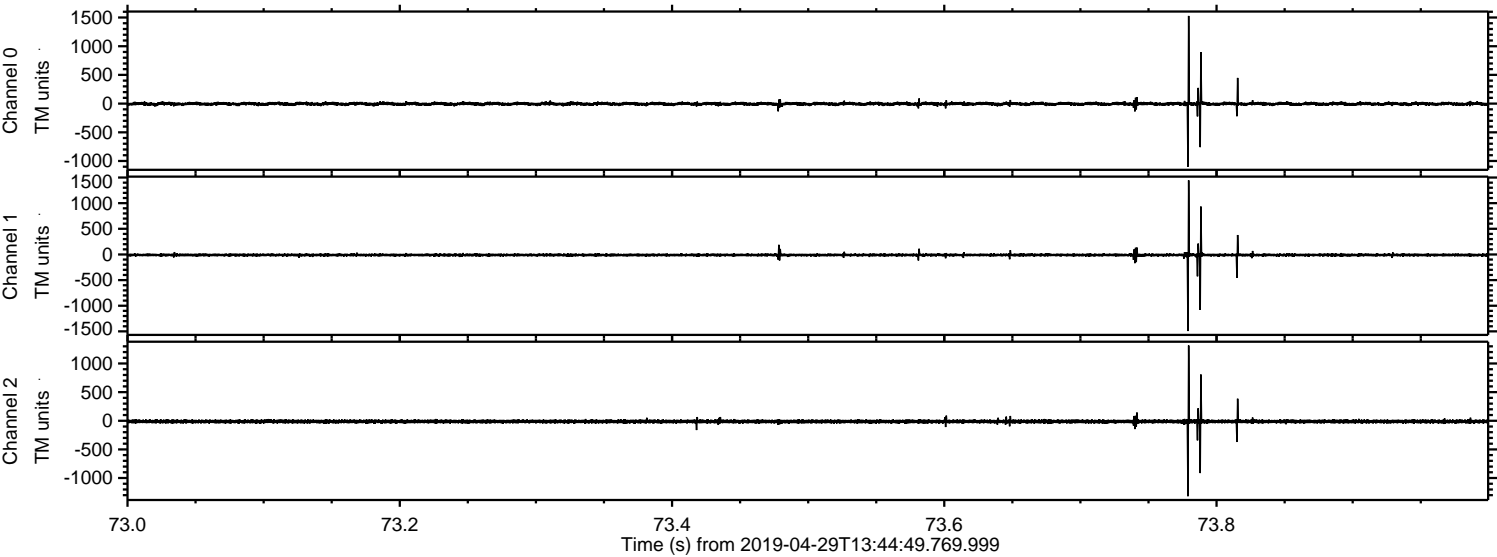


Processed Mon Apr 29 15:53:08 2019 by ELM ver.2012-10-06 from 001__elm20190429_134448__dat00.bin

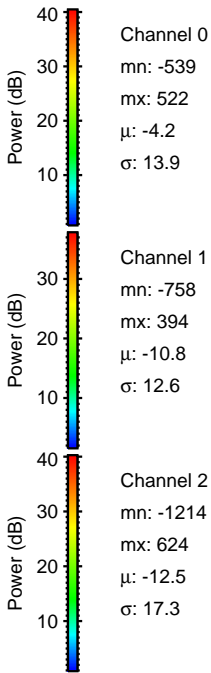
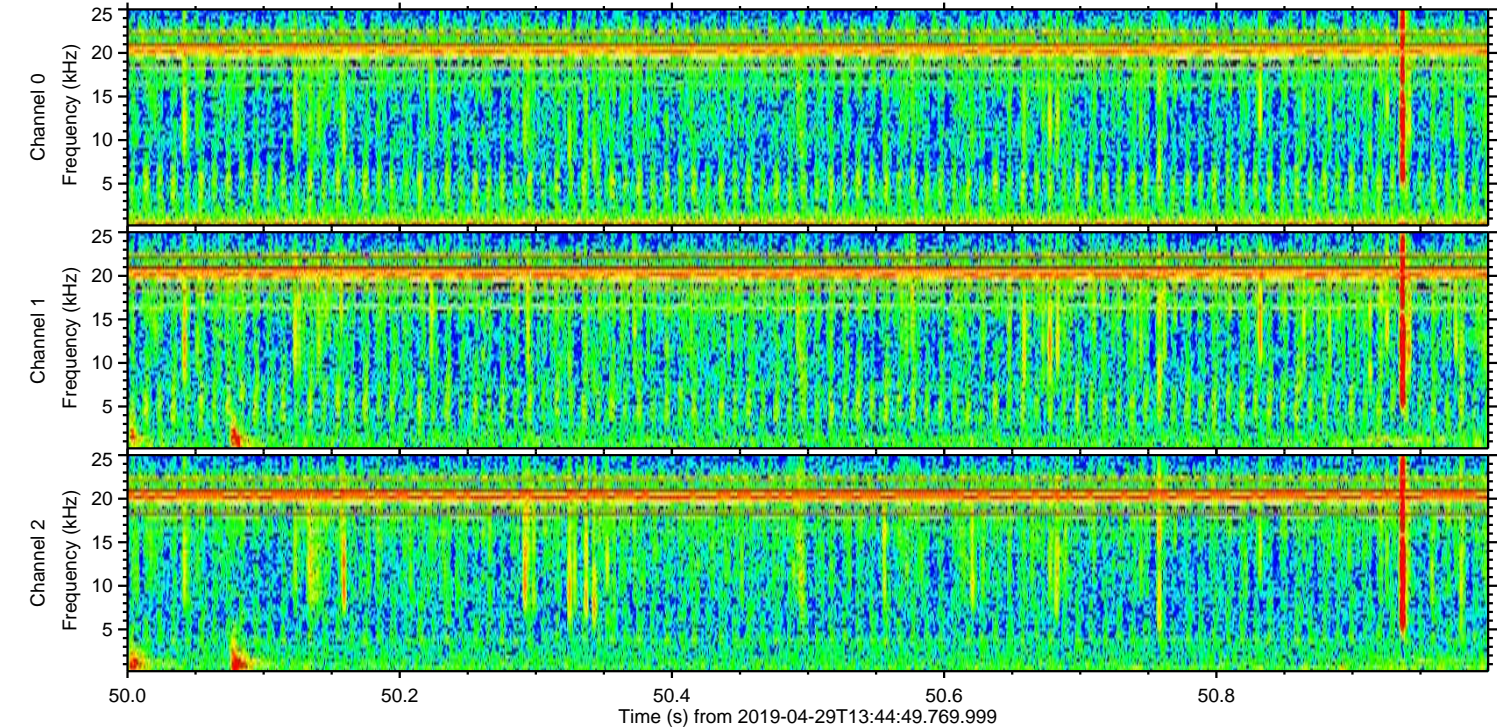
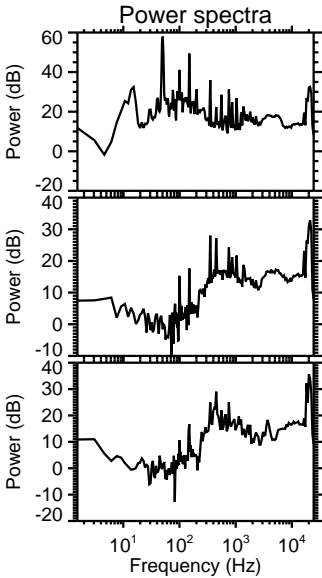
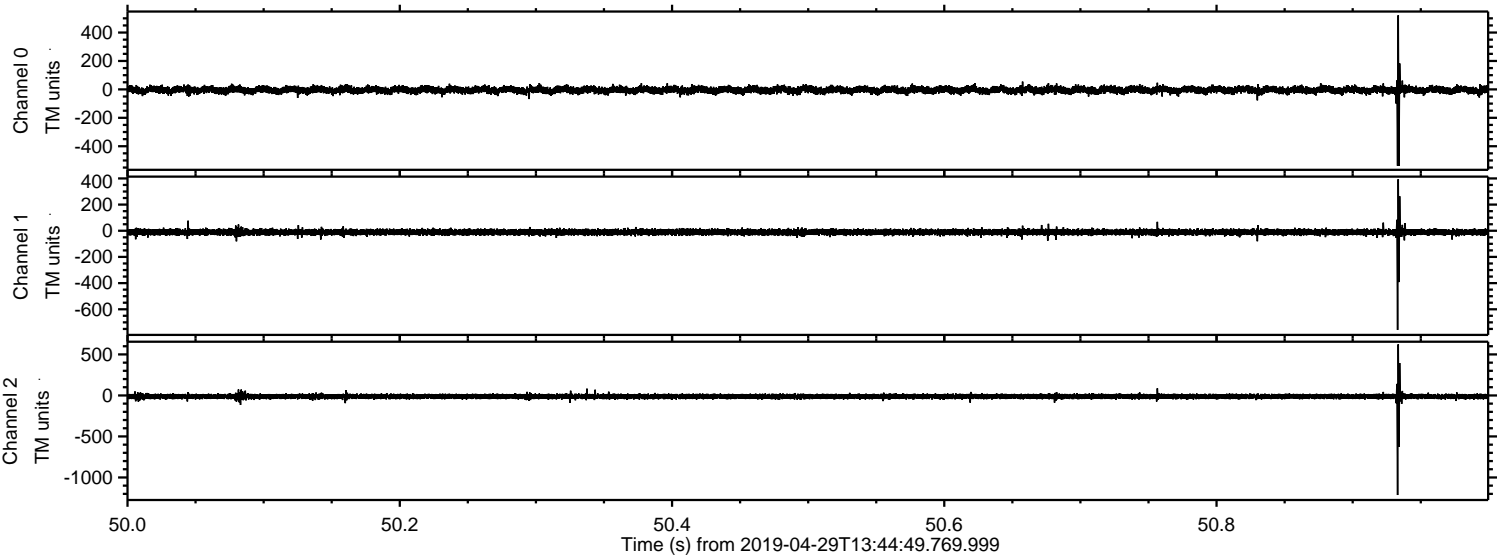


ELMAVAN 3D WAVEFORMS (Measured data sampled at 50 kHz) 51000 packets of 144 samples from 2019-04-29T13:44:49.769.999. Part 74/147

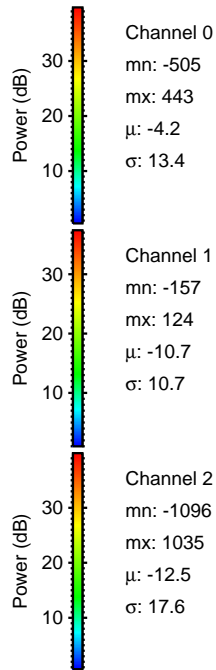
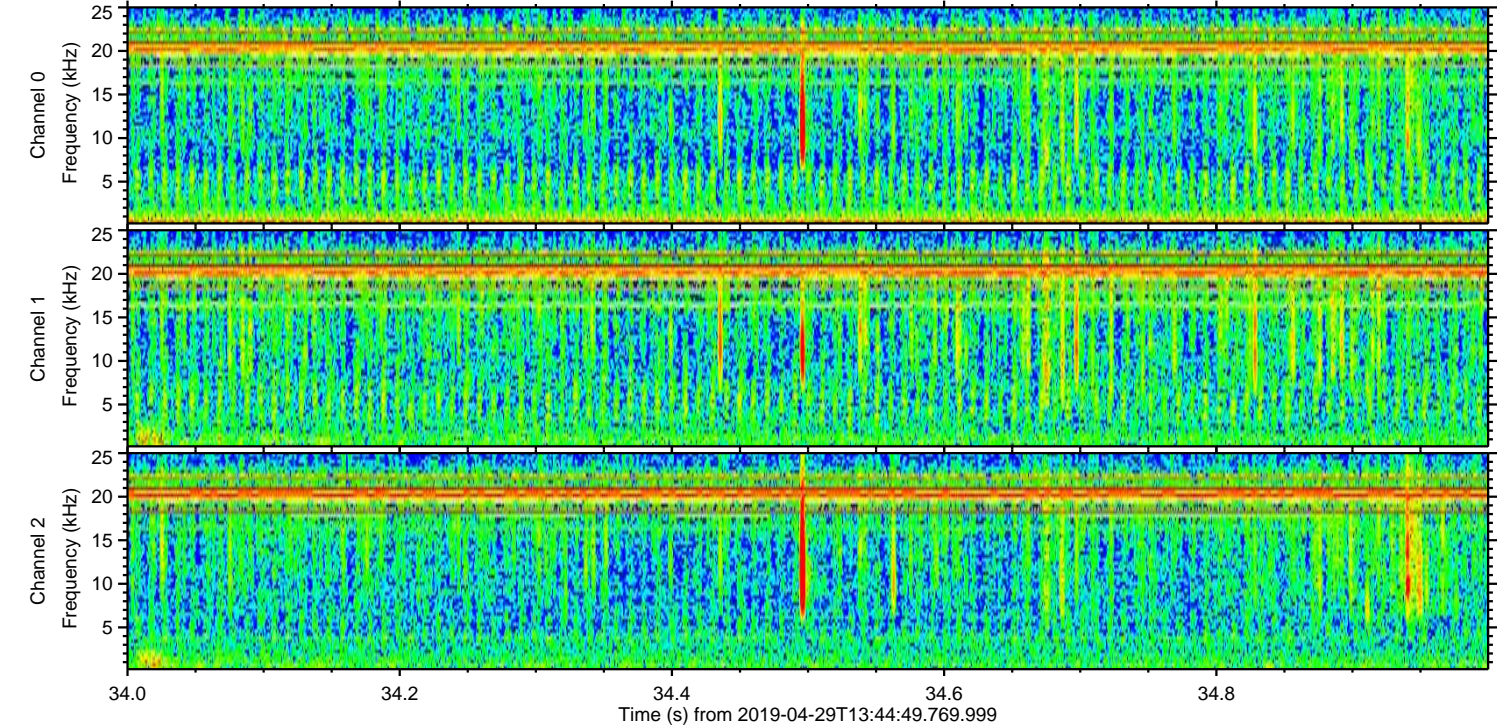
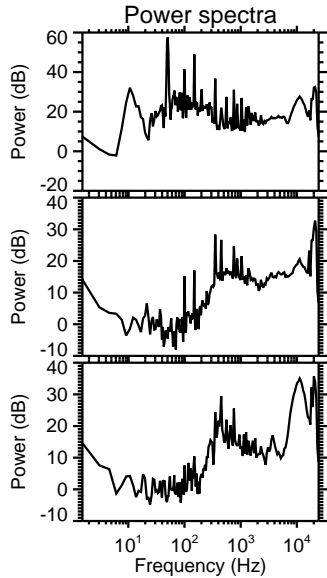
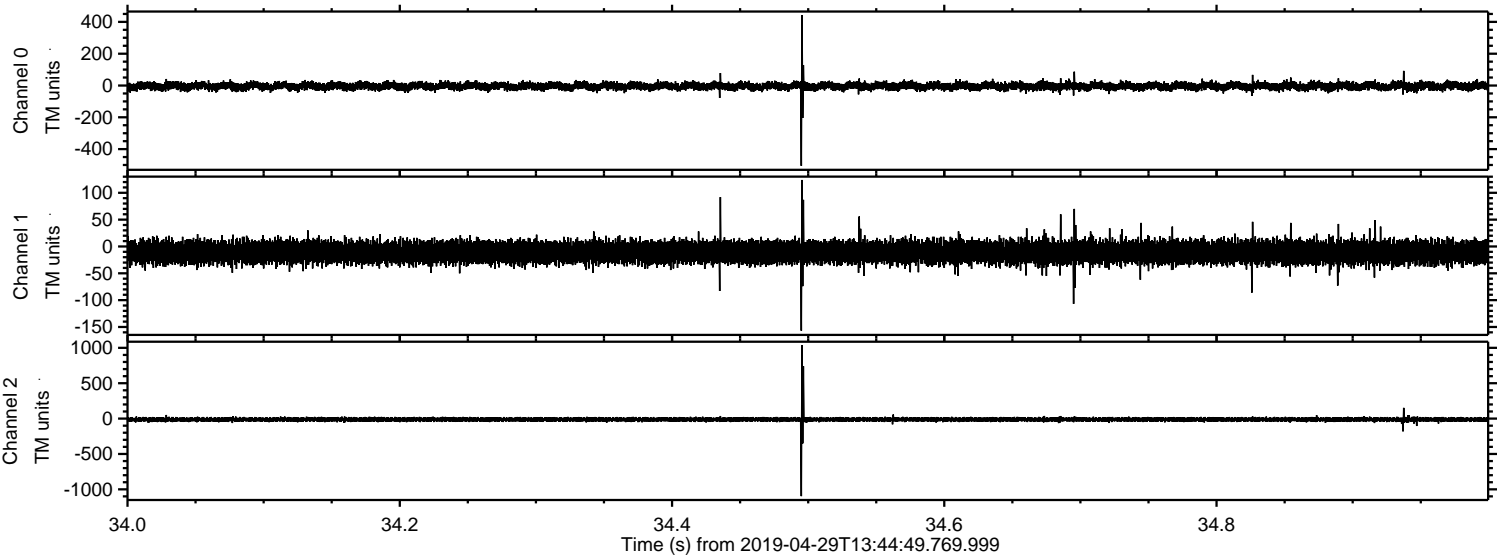
Processed Mon Apr 29 15:53:08 2019 by ELM ver.2012-10-06 from 001__elm20190429_134448__dat00.bin



Processed Mon Apr 29 15:53:09 2019 by ELM ver.2012-10-06 from 001__elm20190429_134448__dat00.bin

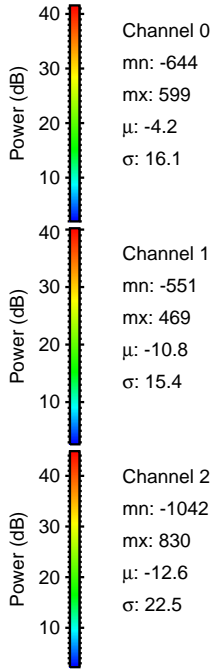
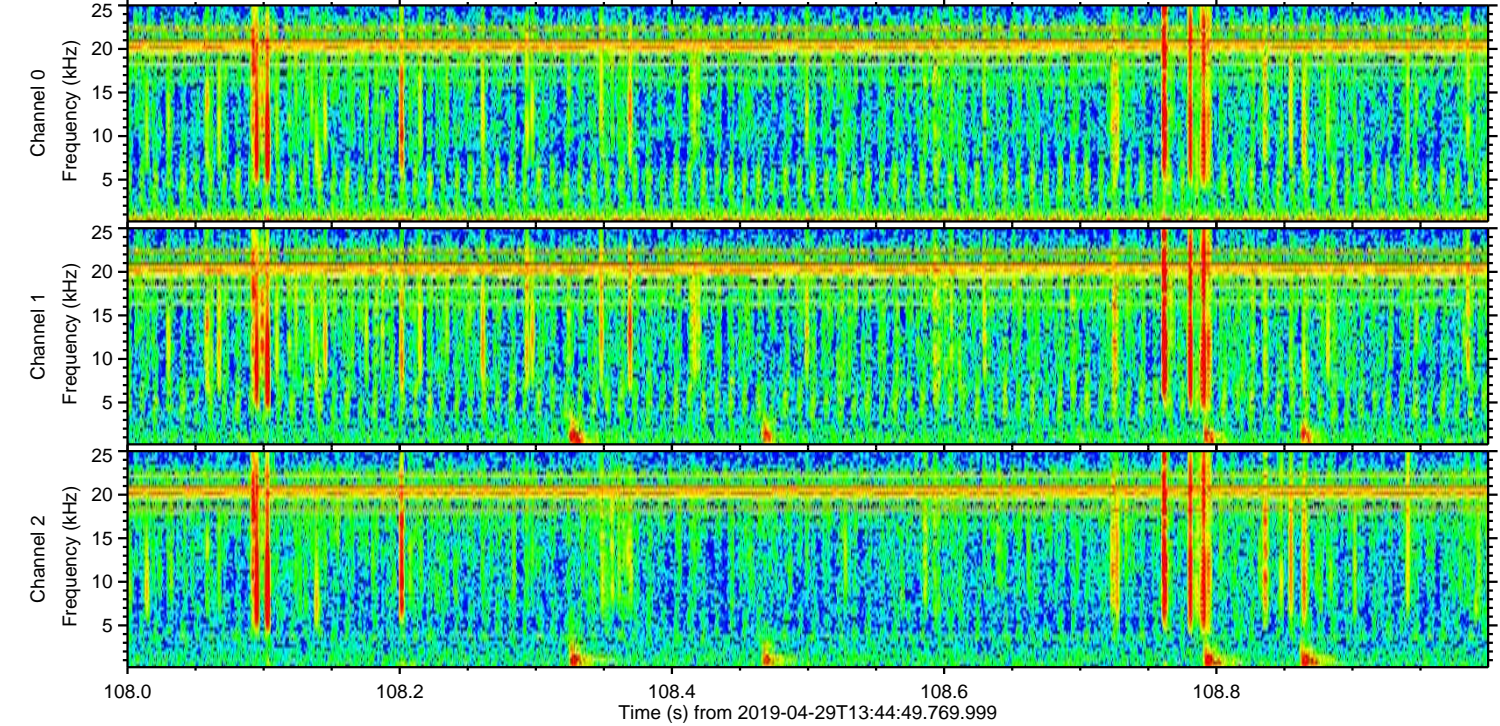
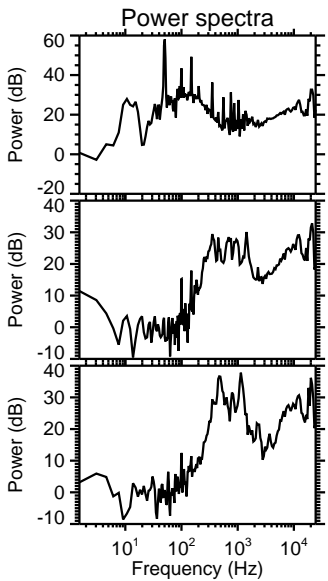
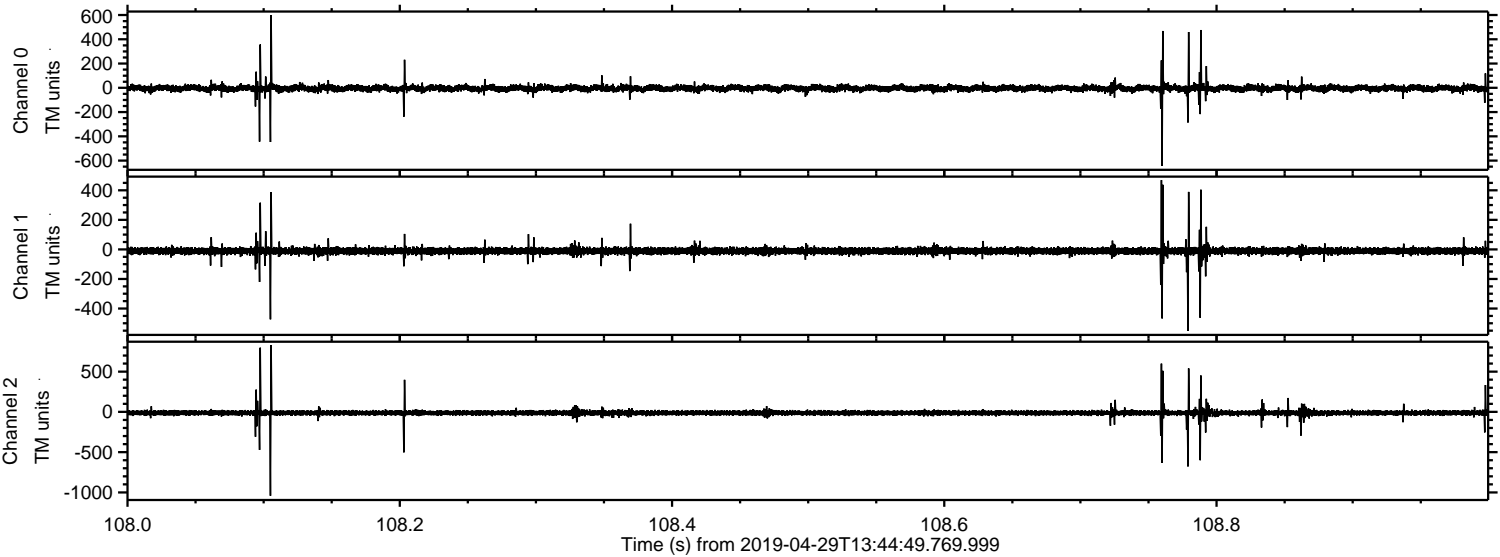


Processed Mon Apr 29 15:53:10 2019 by ELM ver.2012-10-06 from 001__elm20190429_134448__dat00.bin

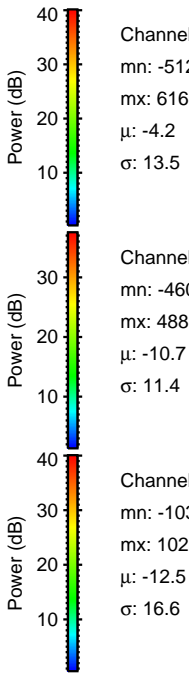
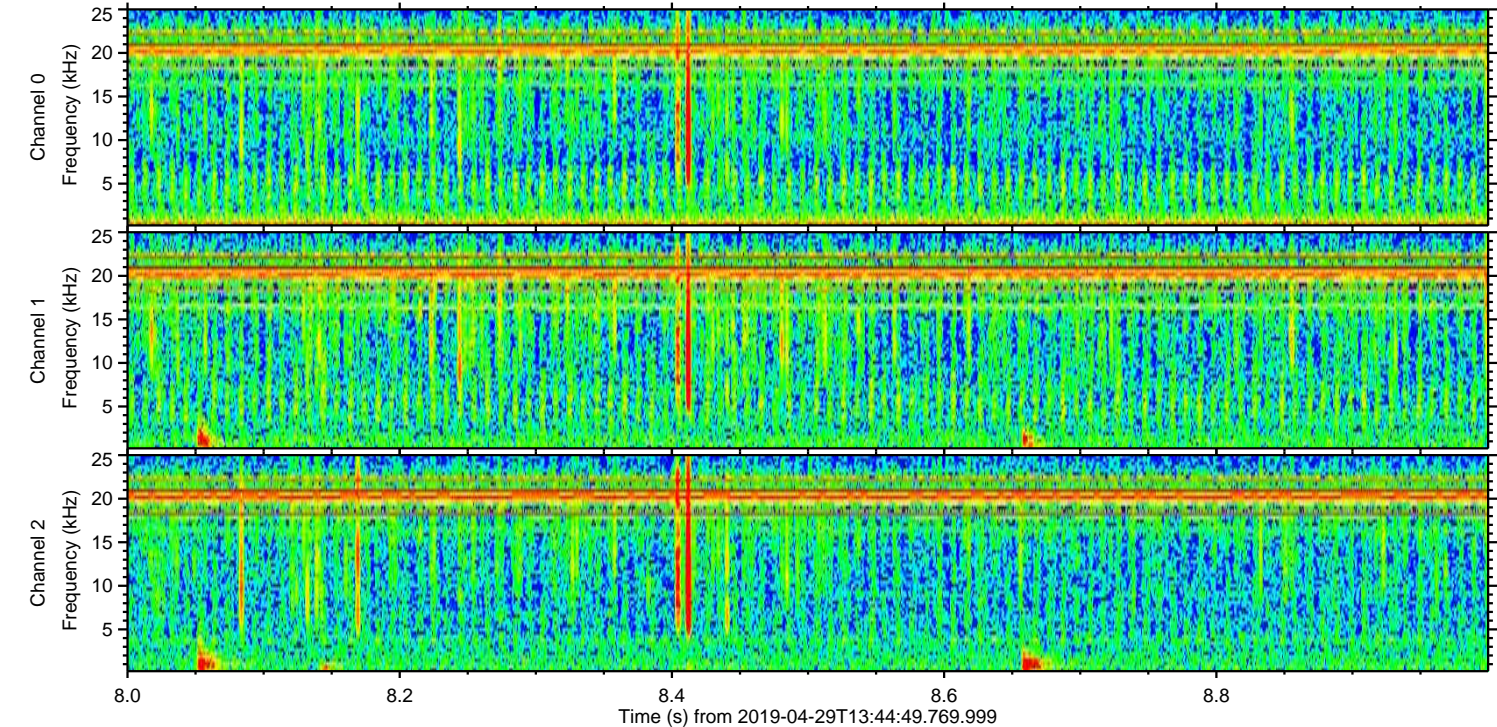
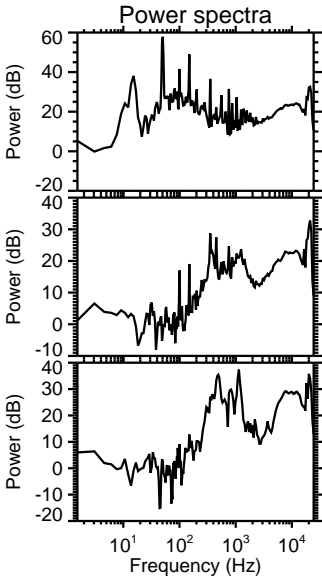
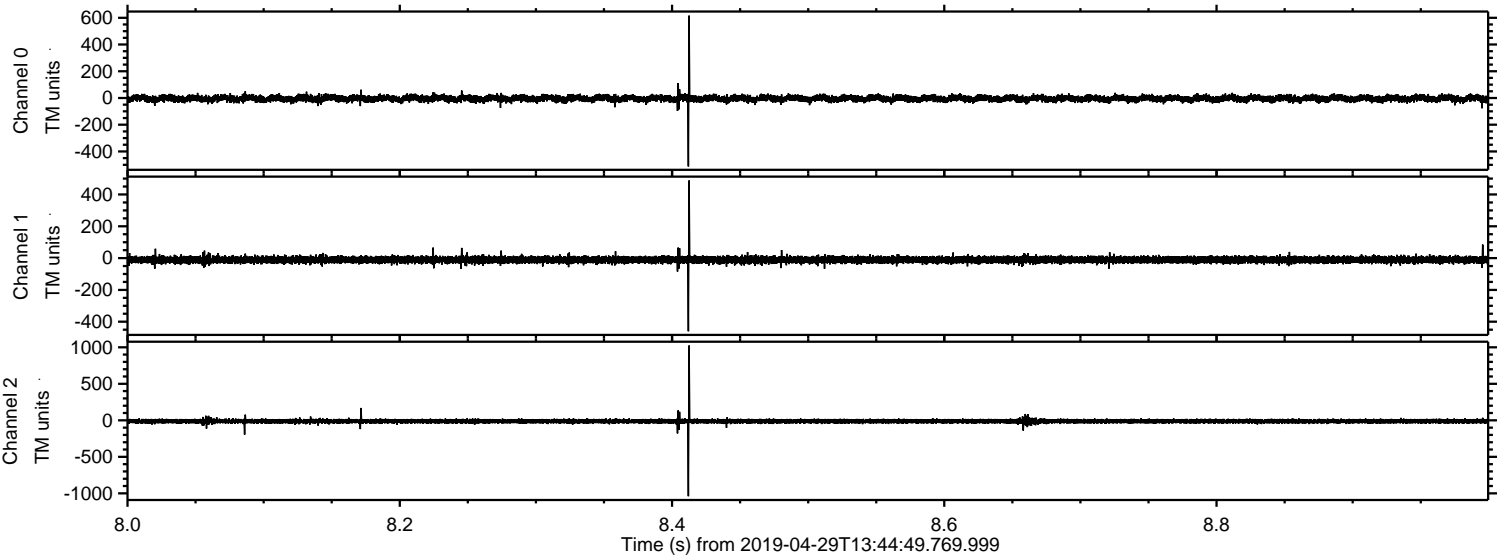


ELMAVAN 3D WAVEFORMS (Measured data sampled at 50 kHz) 51000 packets of 144 samples from 2019-04-29T13:44:49.769.999. Part 109/147

Processed Mon Apr 29 15:53:10 2019 by ELM ver.2012-10-06 from 001__elm20190429_134448__dat00.bin

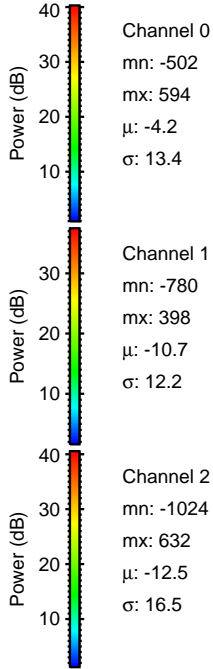
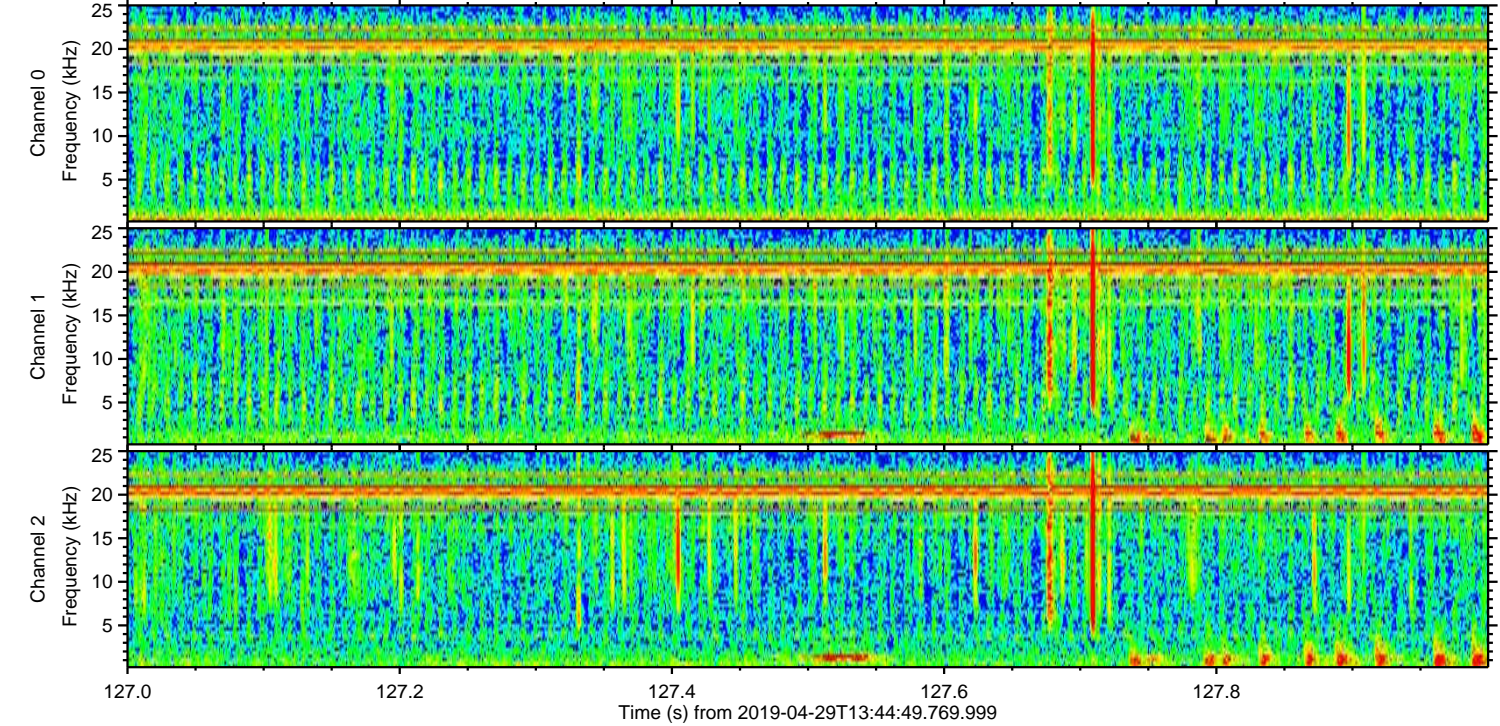
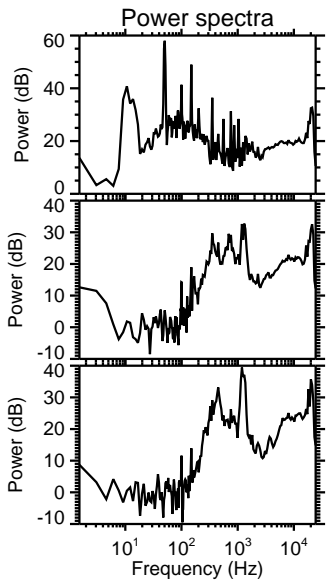
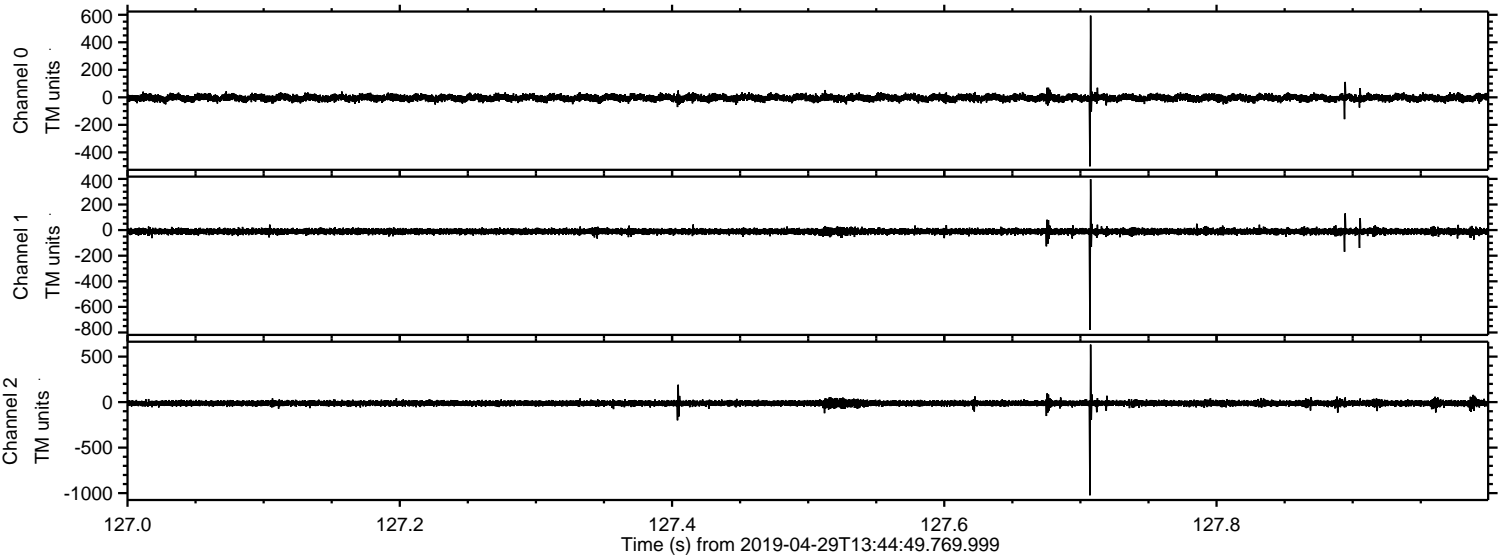


Processed Mon Apr 29 15:53:11 2019 by ELM ver.2012-10-06 from 001__elm20190429_134448__dat00.bin

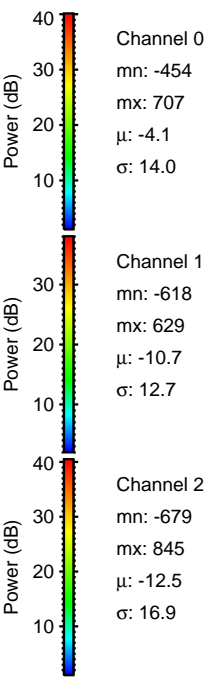
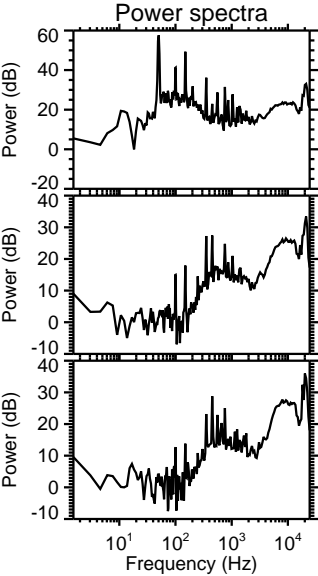
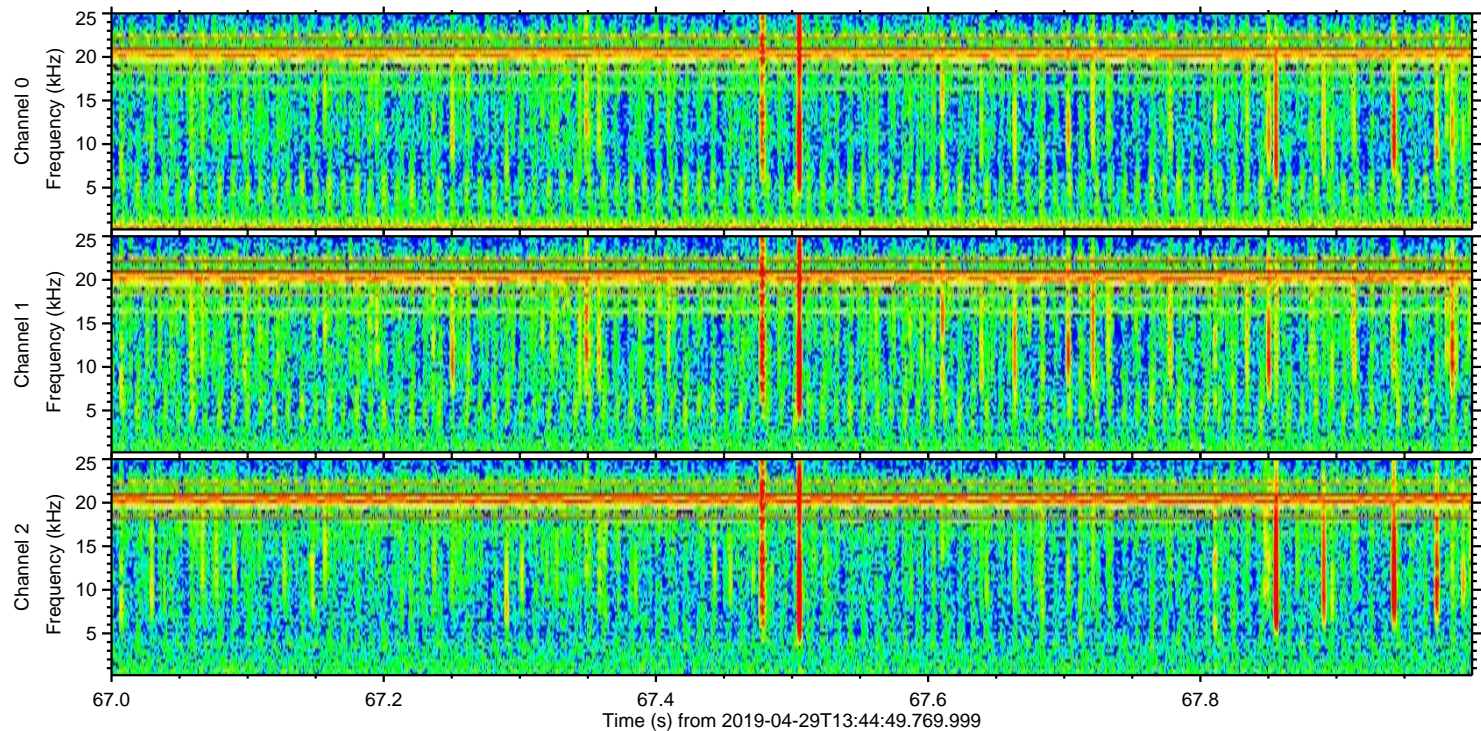
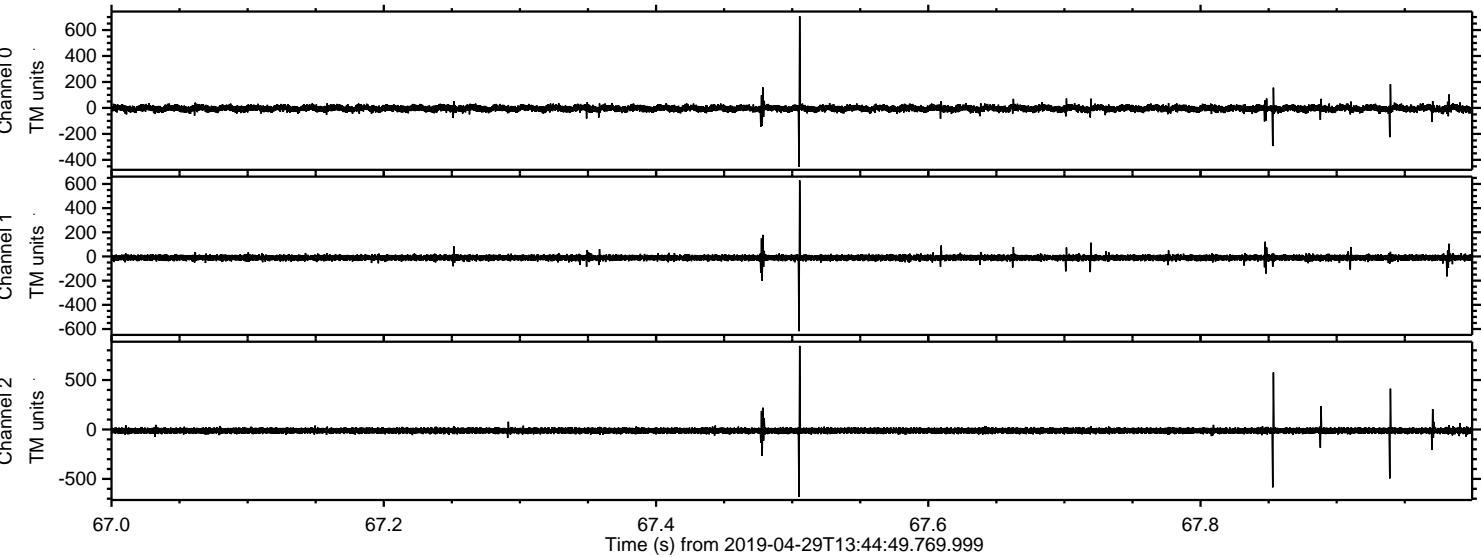


ELMAVAN 3D WAVEFORMS (Measured data sampled at 50 kHz) 51000 packets of 144 samples from 2019-04-29T13:44:49.769.999. Part 128/147

Processed Mon Apr 29 15:53:11 2019 by ELM ver.2012-10-06 from 001__elm20190429_134448__dat00.bin



Processed Mon Apr 29 15:53:12 2019 by ELM ver.2012-10-06 from 001__elm20190429_134448__dat00.bin



Channel 0
mn: -454
mx: 707
 μ : -4.1
 σ : 14.0

Channel 1
mn: -618
mx: 629
 μ : -10.7
 σ : 12.7

Channel 2
mn: -679
mx: 845
 μ : -12.5
 σ : 16.9

Processed Mon Apr 29 15:53:13 2019 by ELM ver.2012-10-06 from 001__elm20190429_134448__dat00.bin

