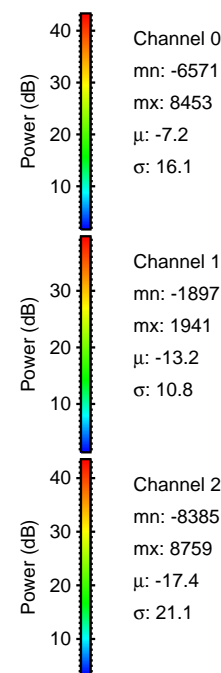
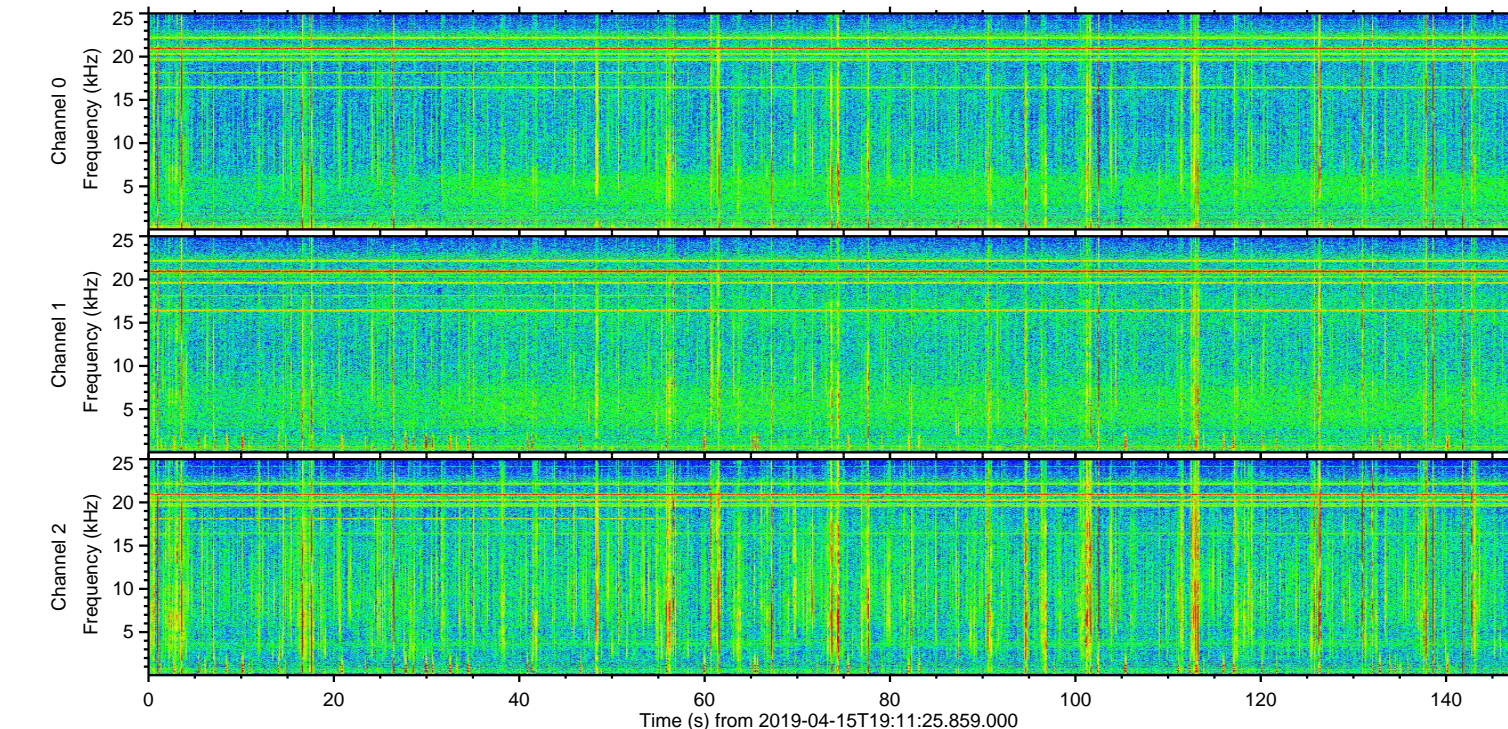
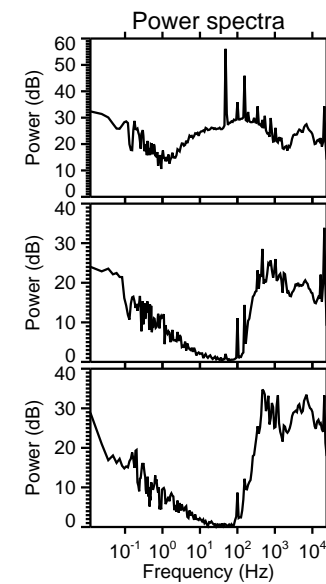
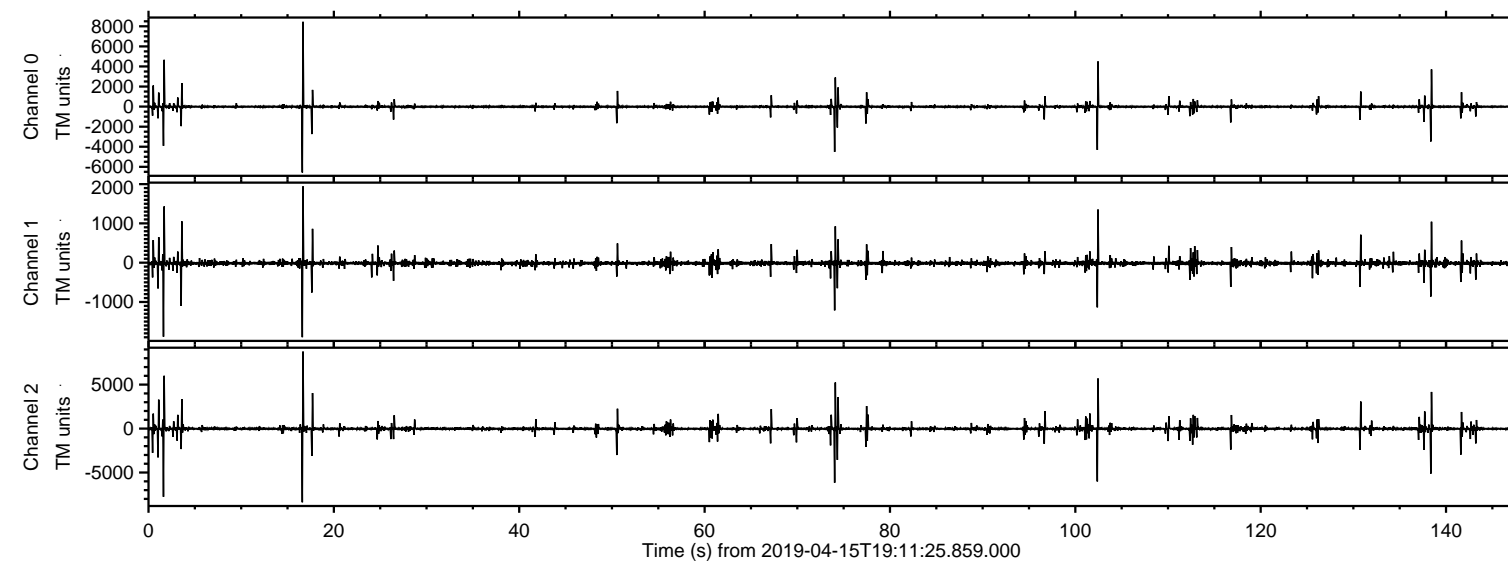
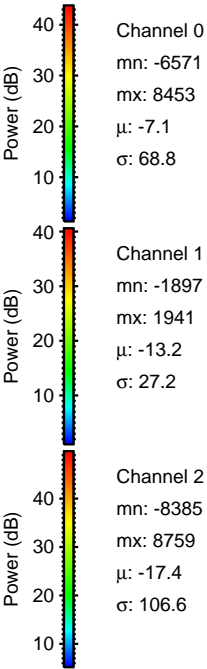
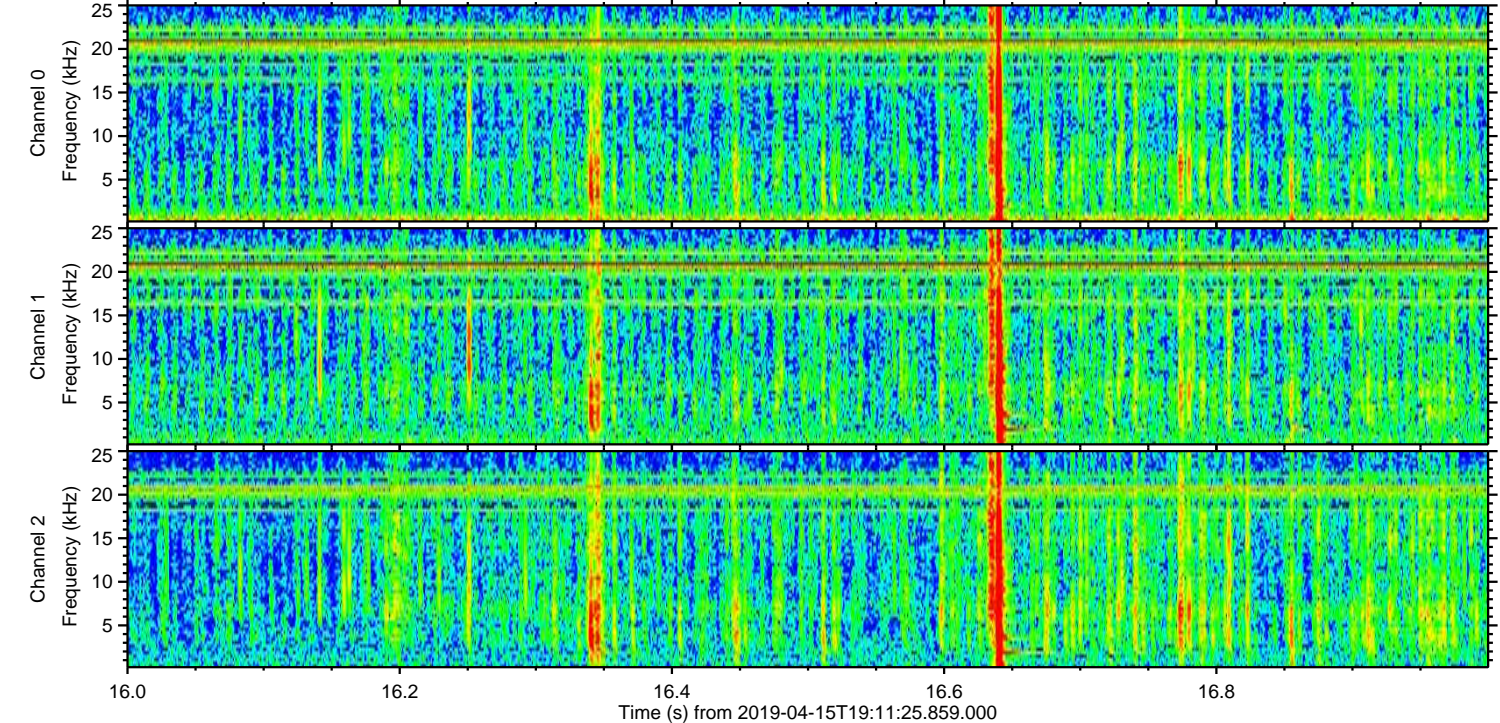
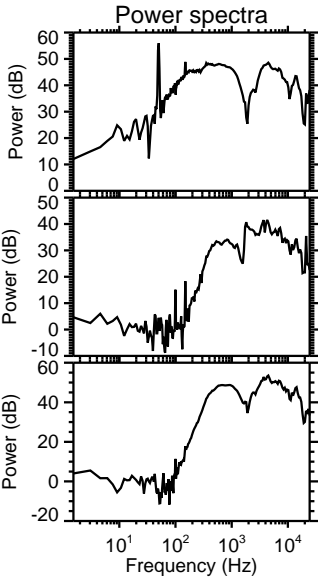
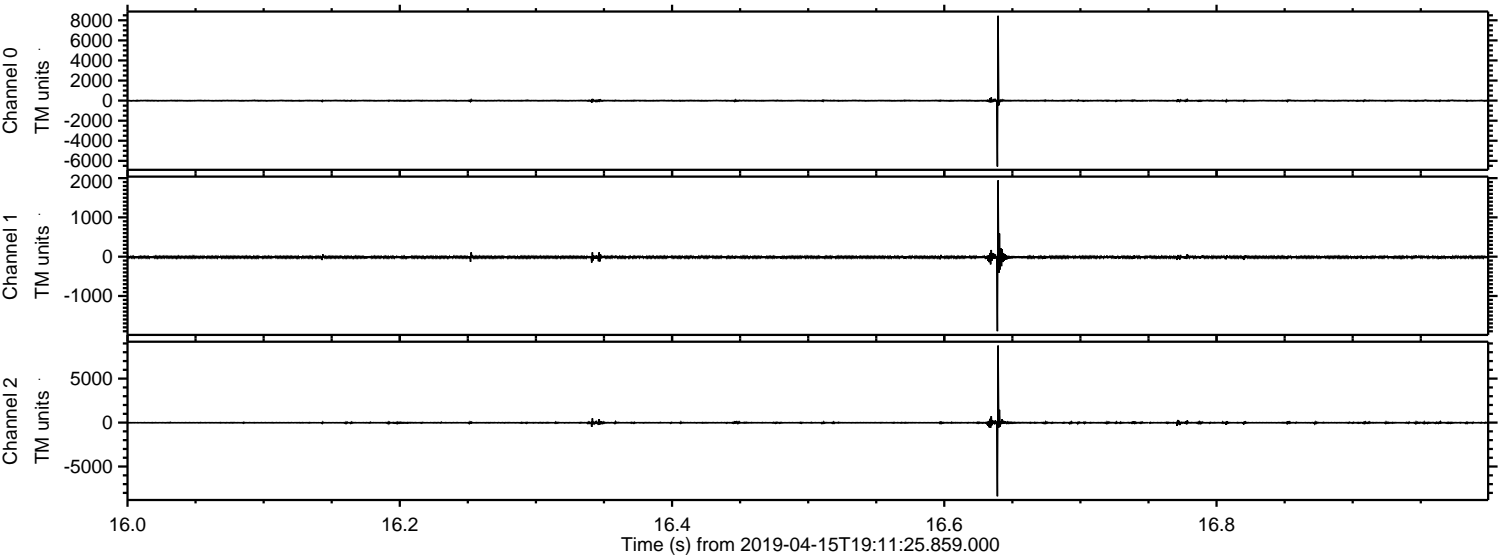


ELMAVAN 3D WAVEFORMS (Measured data sampled at 50 kHz) 51000 packets of 144 samples from 2019-04-15T19:11:25.859.000.

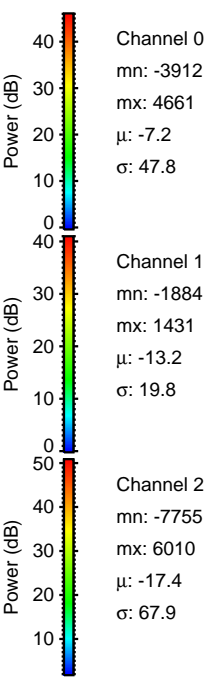
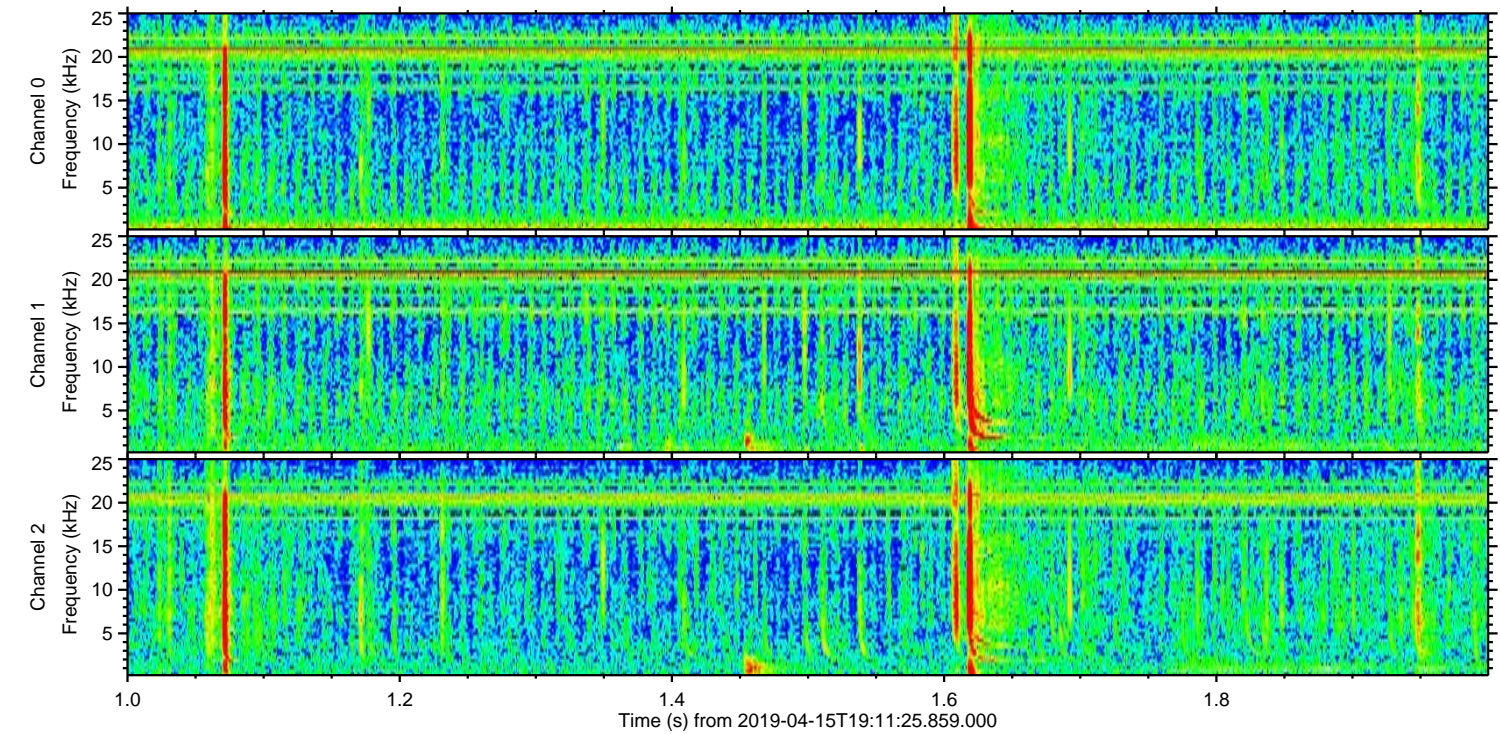
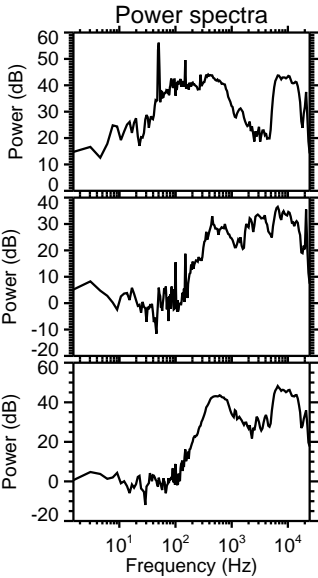
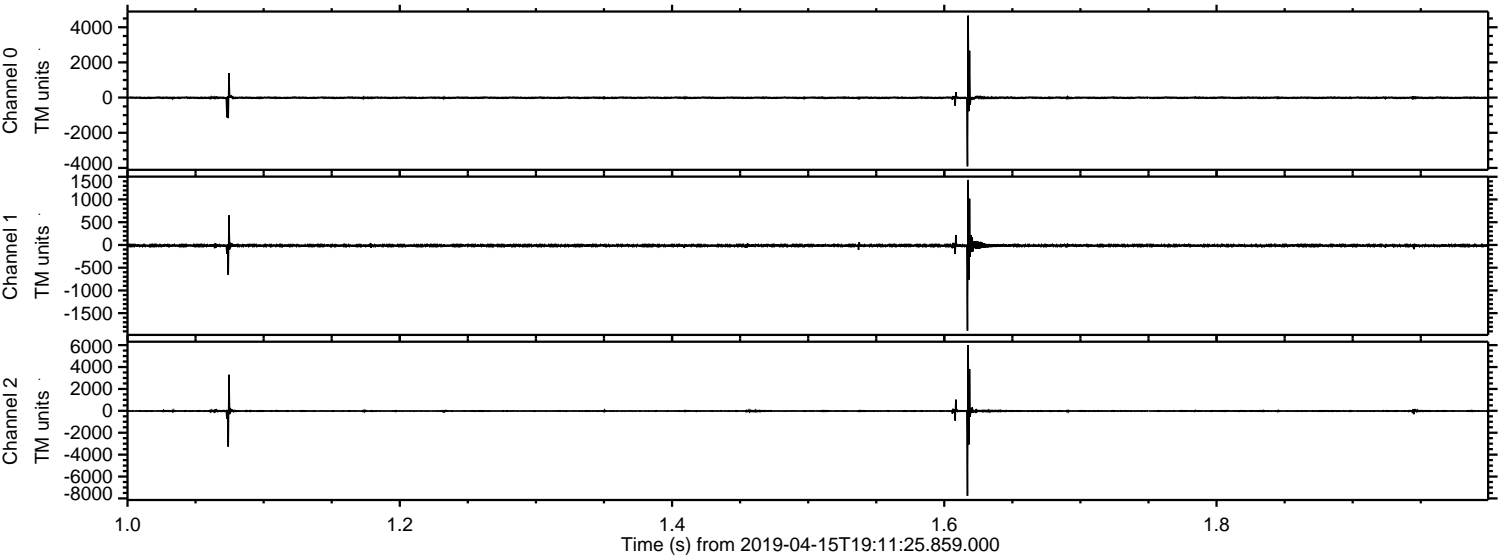
Processed Mon Apr 15 21:19:06 2019 by ELM ver.2012-10-06 from 001__elm20190415_191124__dat00.bin



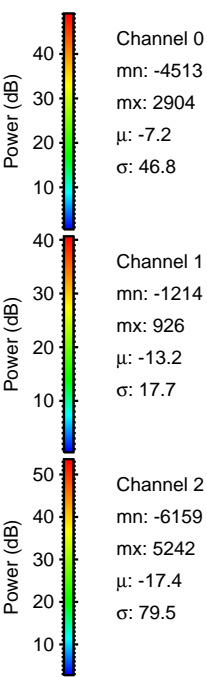
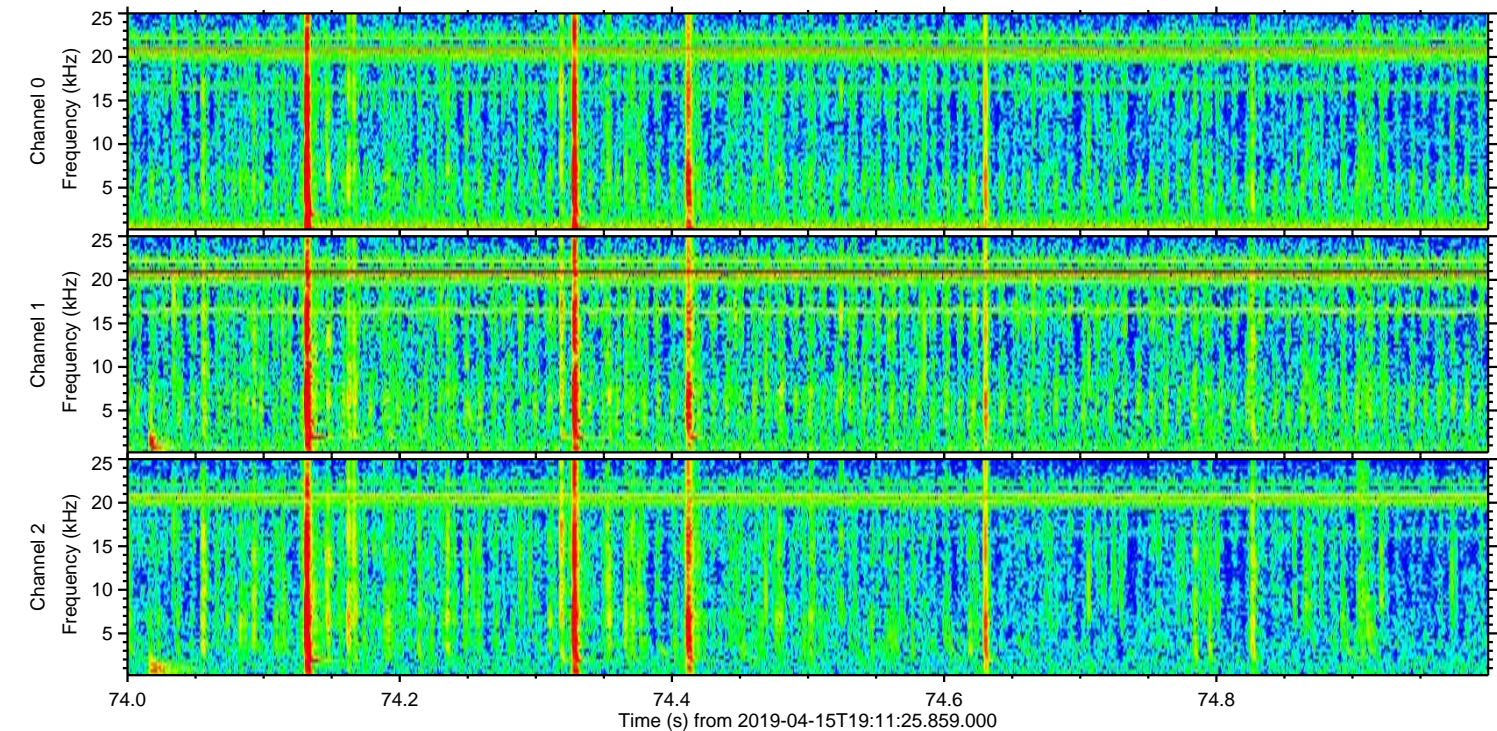
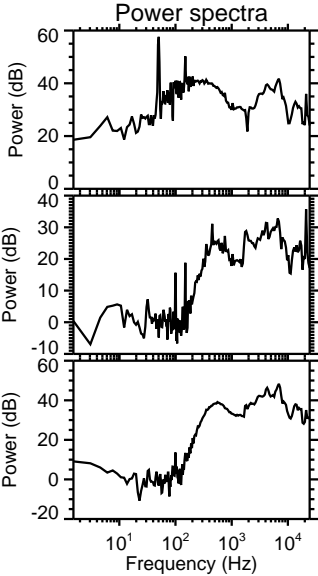
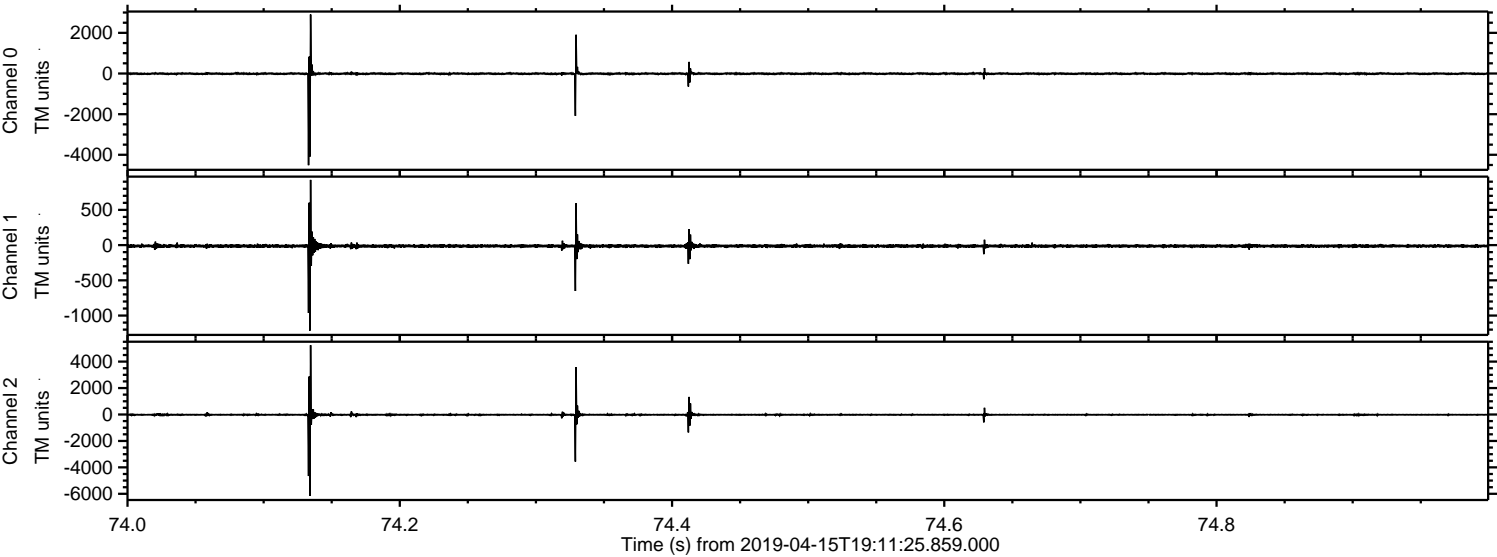
Processed Mon Apr 15 21:19:12 2019 by ELM ver.2012-10-06 from 001__elm20190415_191124__dat00.bin



Processed Mon Apr 15 21:19:13 2019 by ELM ver.2012-10-06 from 001__elm20190415_191124__dat00.bin

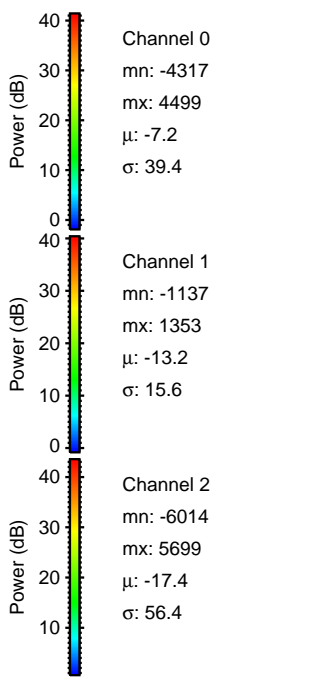
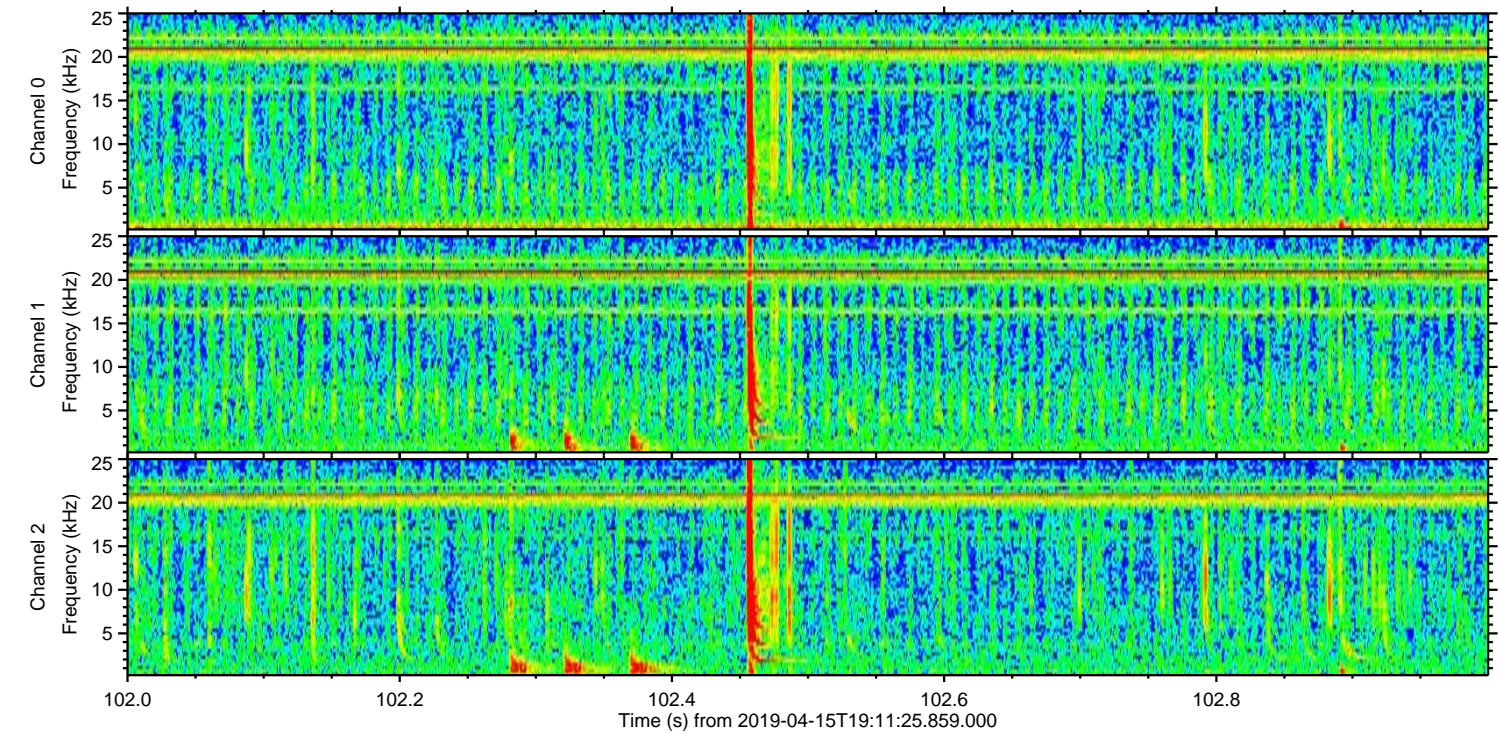
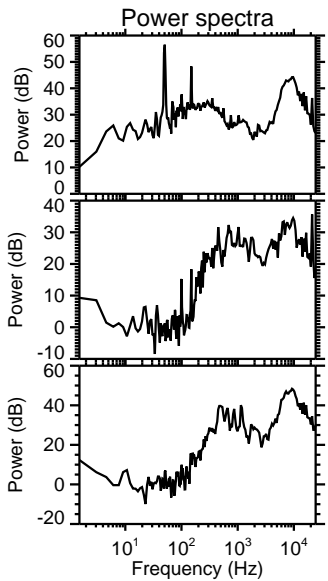
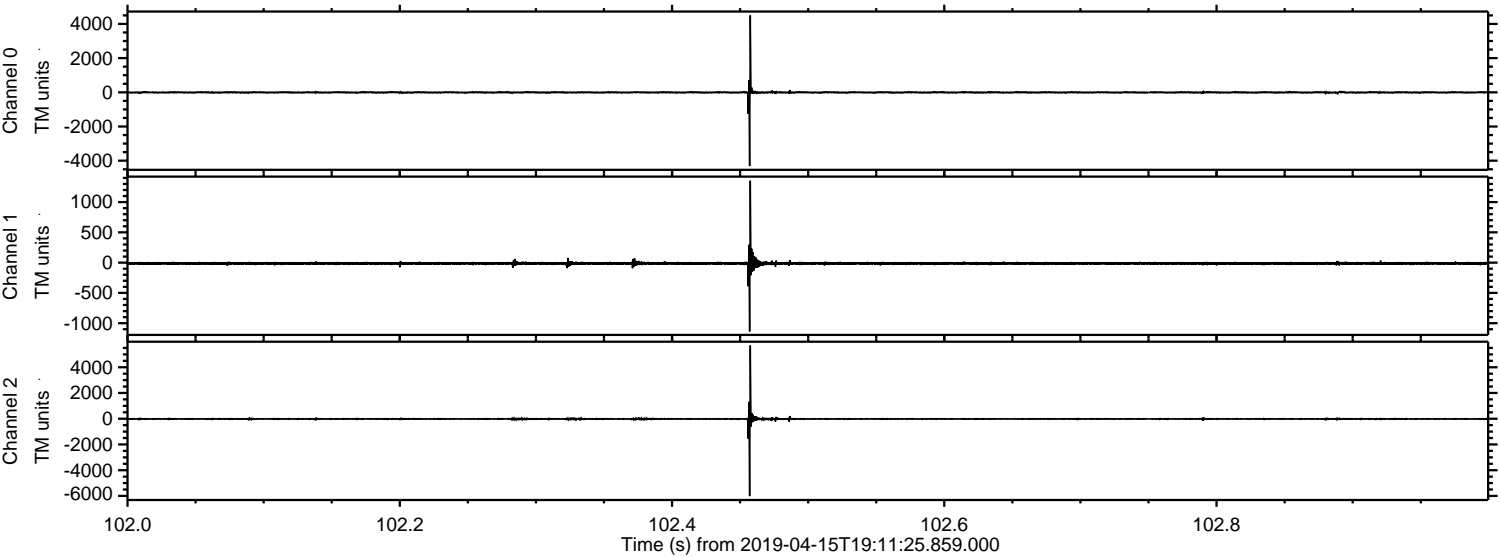


Processed Mon Apr 15 21:19:14 2019 by ELM ver.2012-10-06 from 001__elm20190415_191124__dat00.bin



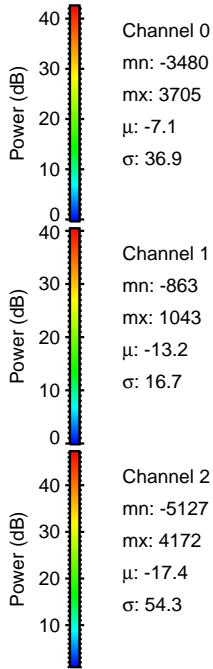
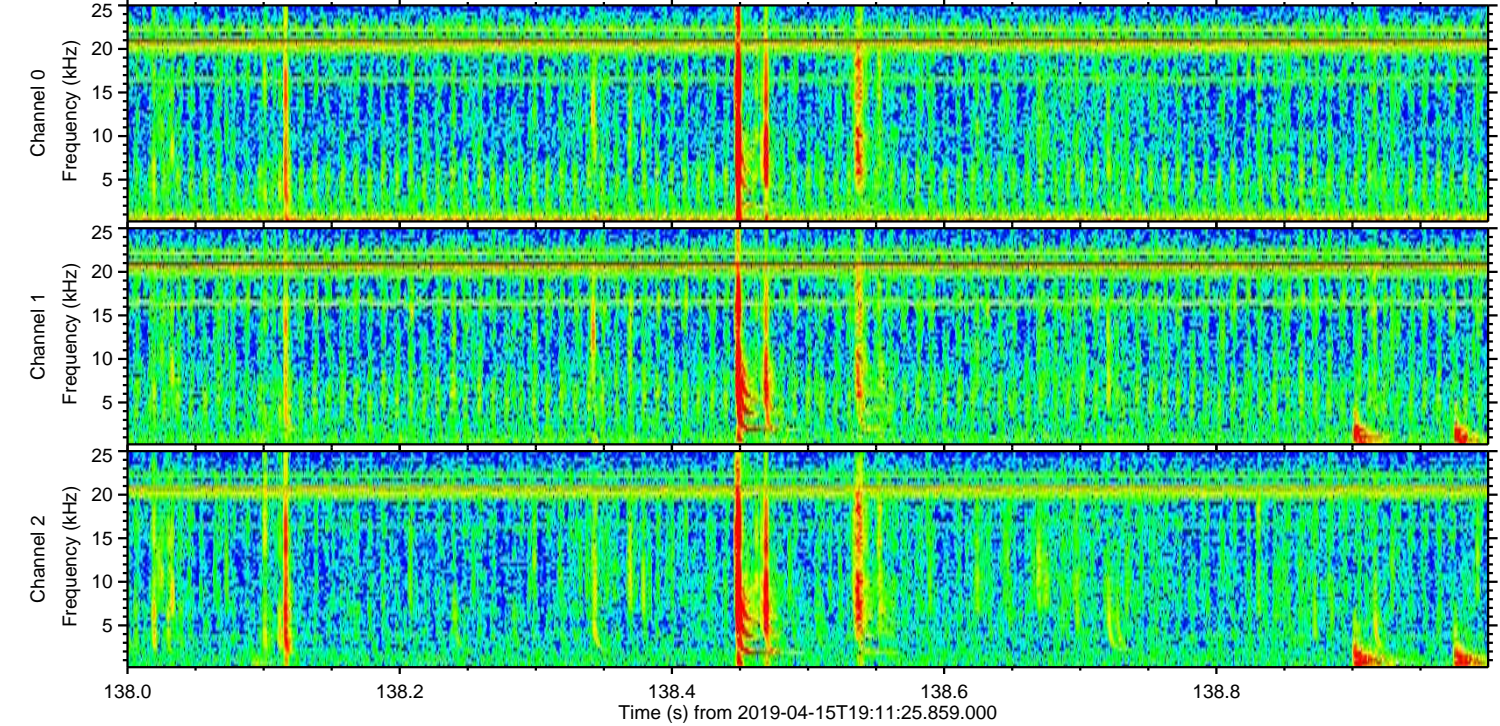
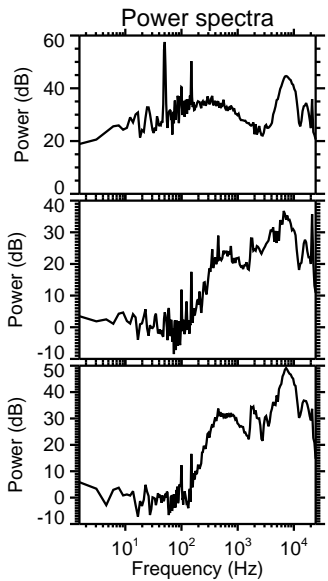
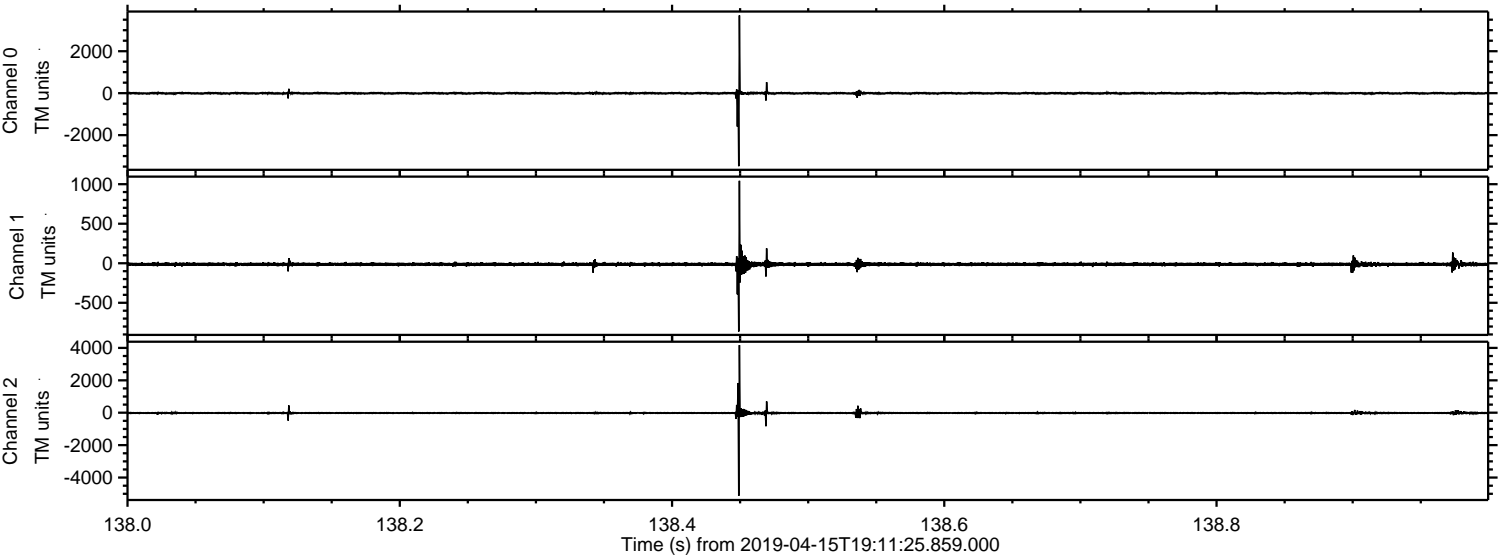
ELMAVAN 3D WAVEFORMS (Measured data sampled at 50 kHz) 51000 packets of 144 samples from 2019-04-15T19:11:25.859.000. Part 103/147

Processed Mon Apr 15 21:19:14 2019 by ELM ver.2012-10-06 from 001__elm20190415_191124__dat00.bin

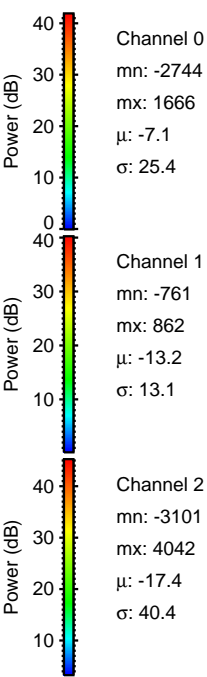
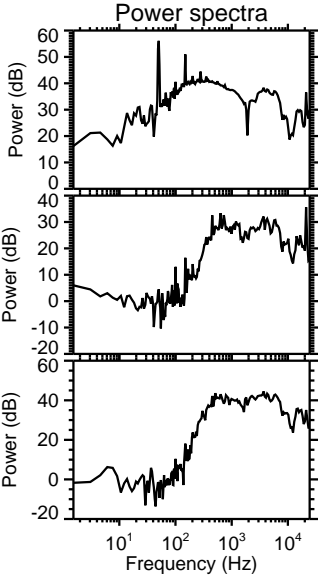
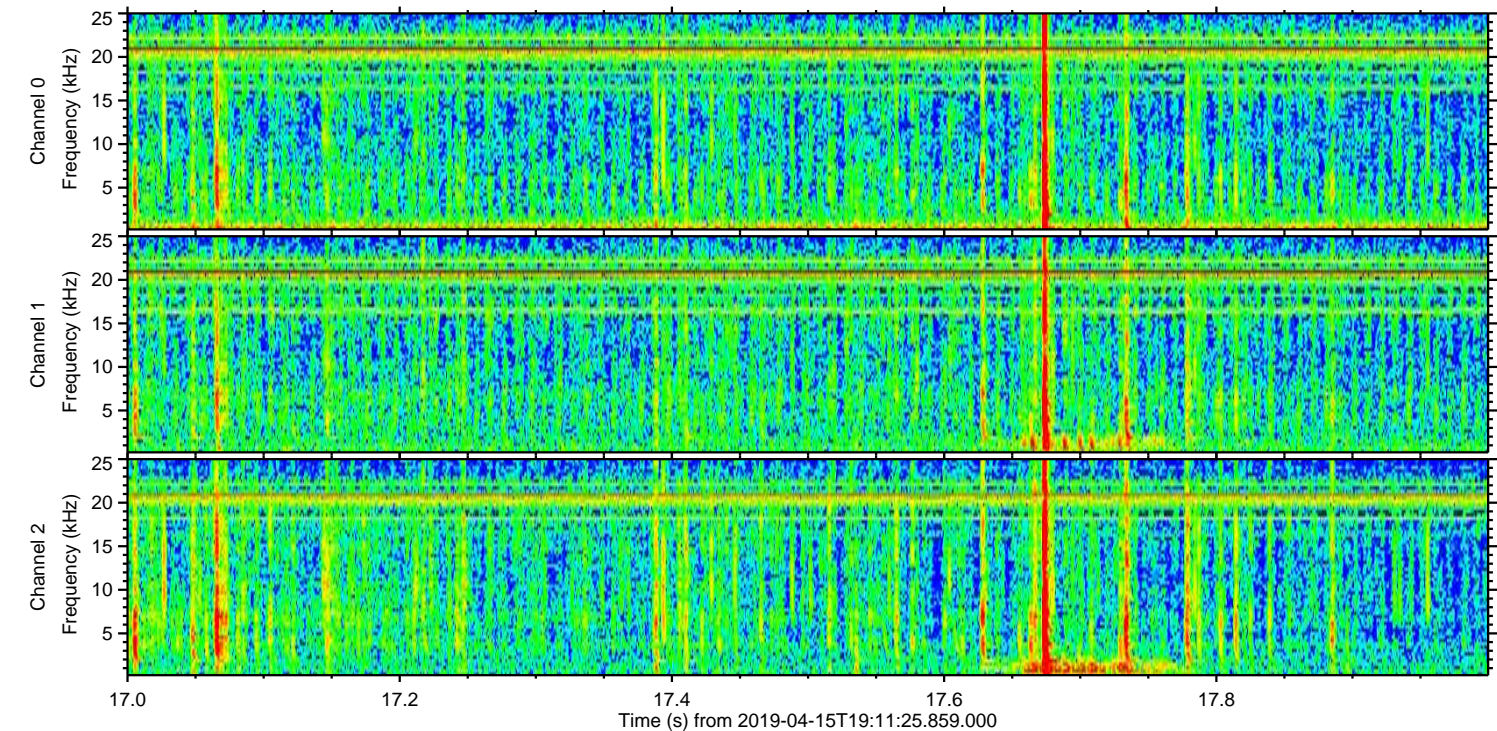
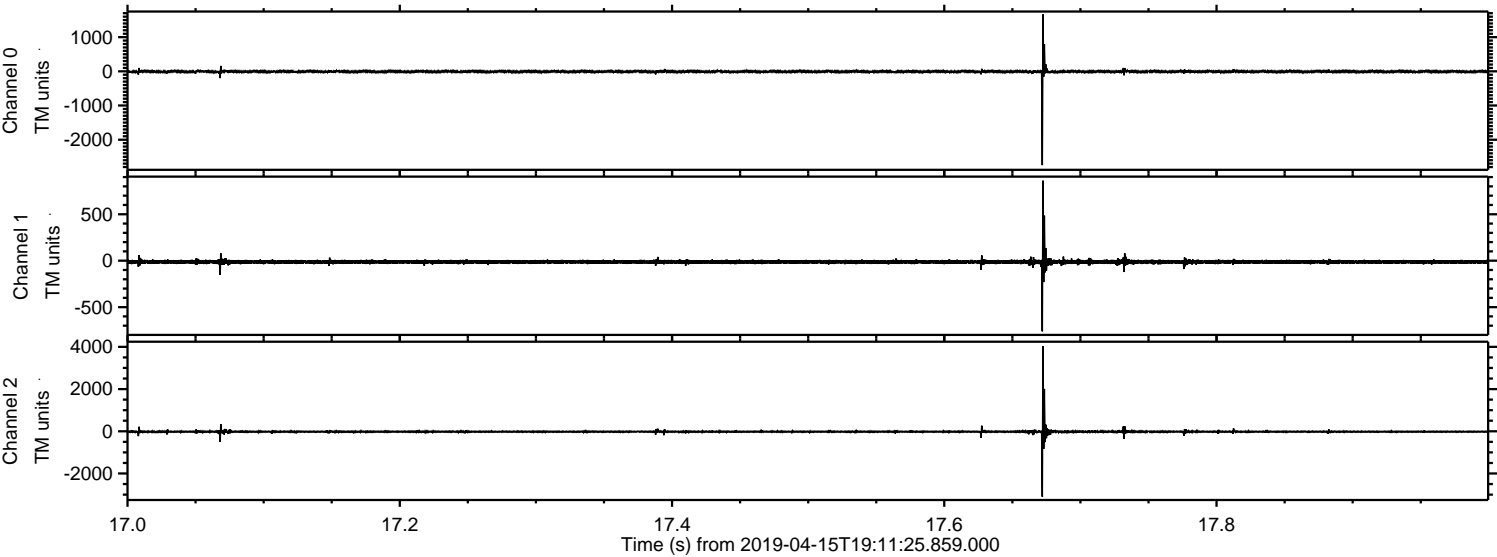


ELMAVAN 3D WAVEFORMS (Measured data sampled at 50 kHz) 51000 packets of 144 samples from 2019-04-15T19:11:25.859.000. Part 139/147

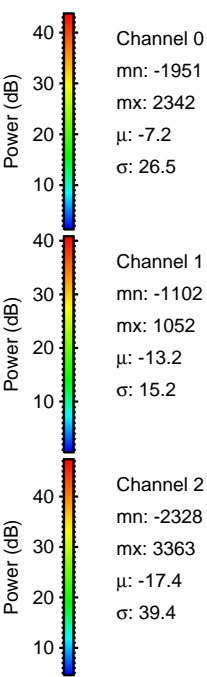
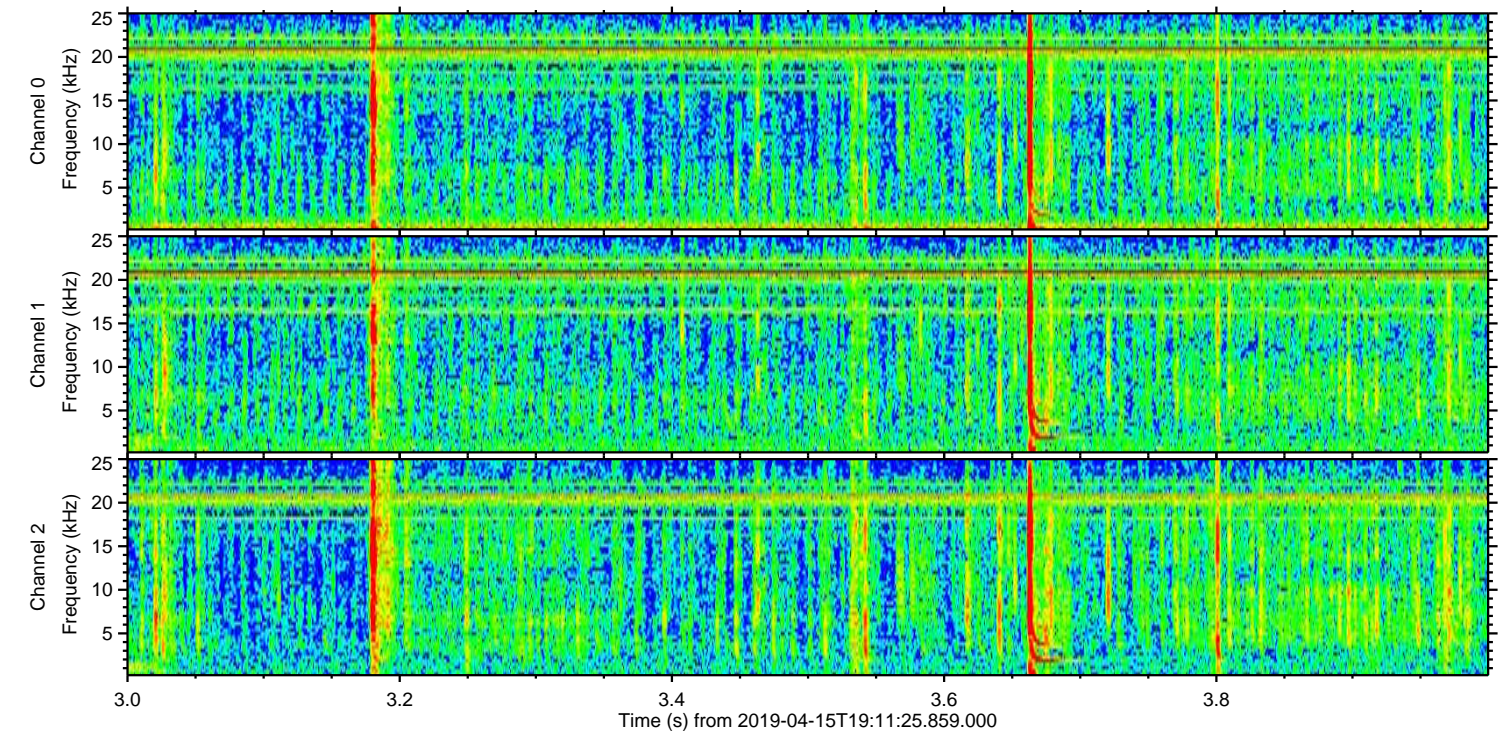
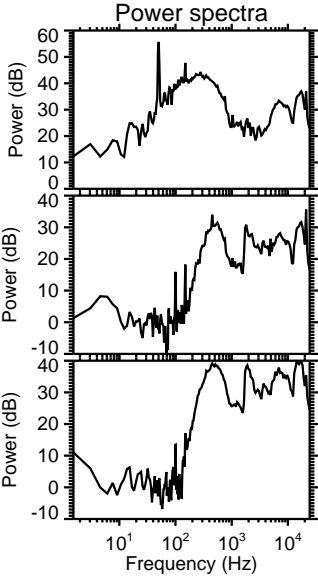
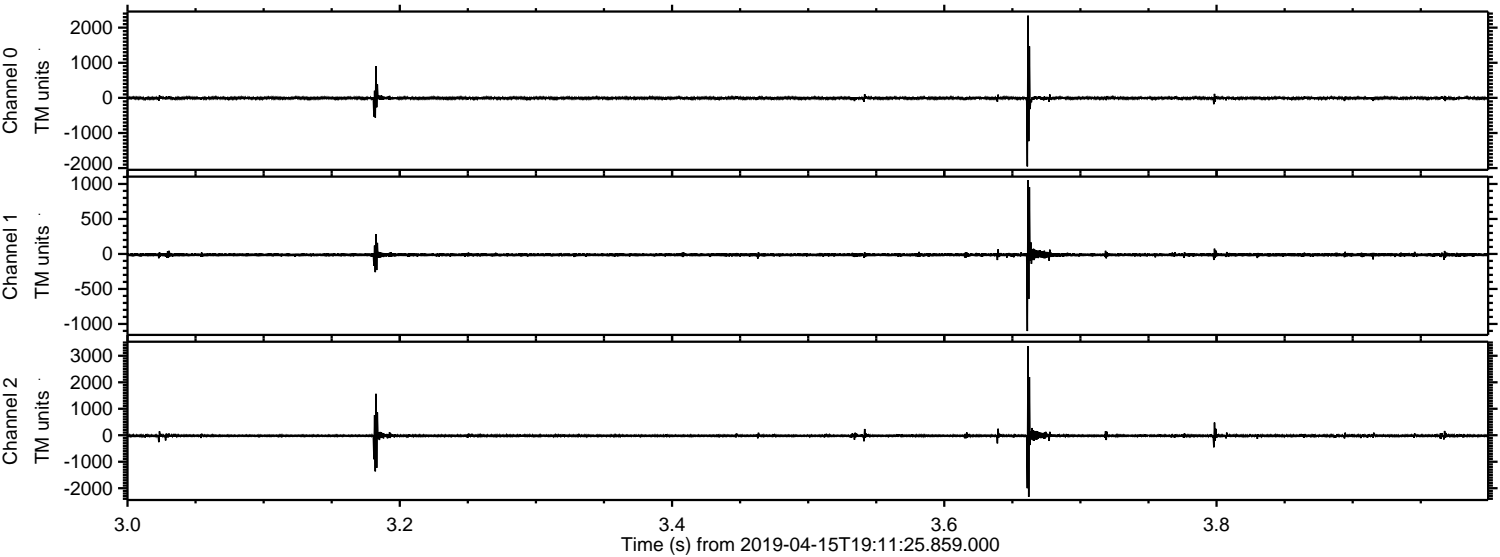
Processed Mon Apr 15 21:19:15 2019 by ELM ver.2012-10-06 from 001__elm20190415_191124__dat00.bin



Processed Mon Apr 15 21:19:16 2019 by ELM ver.2012-10-06 from 001__elm20190415_191124__dat00.bin

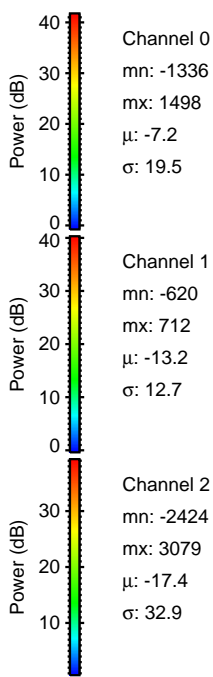
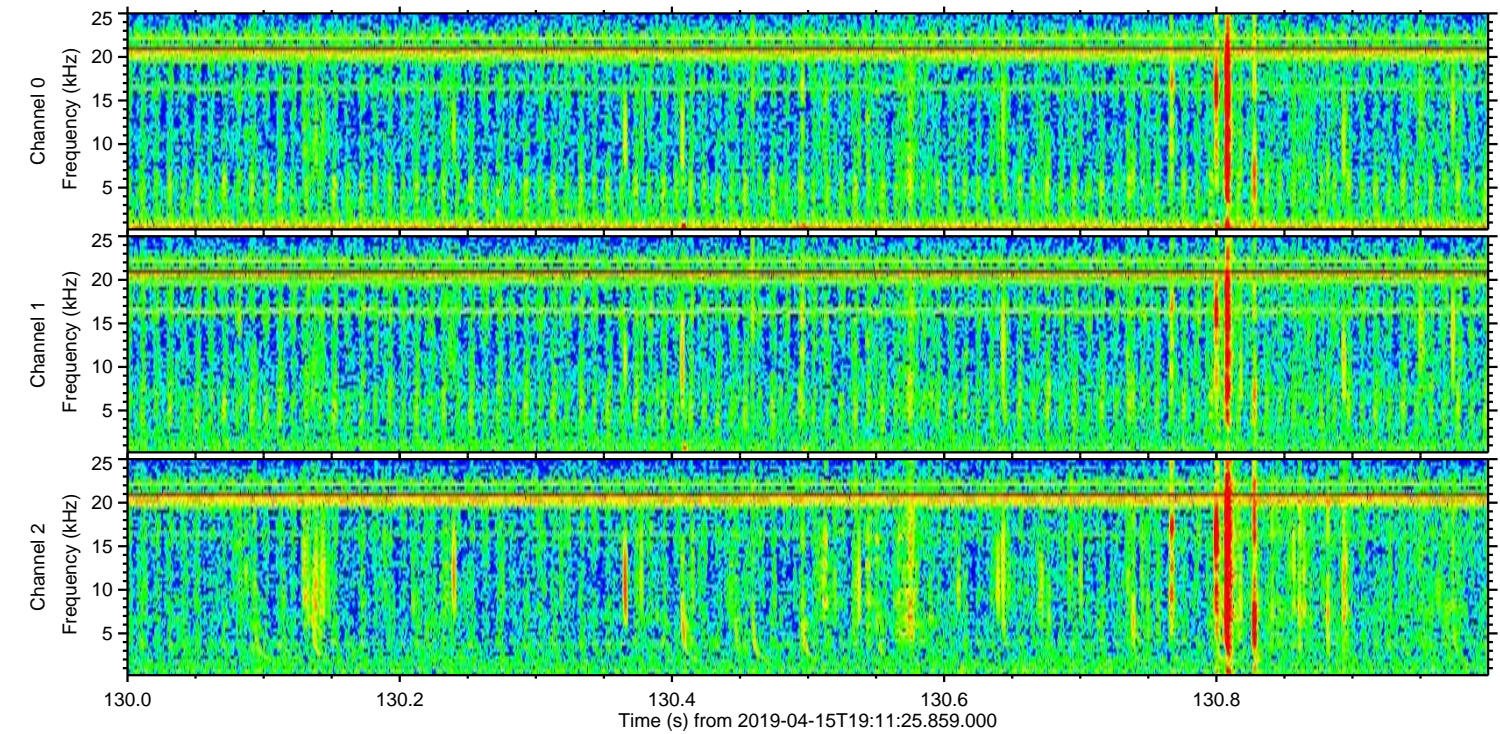
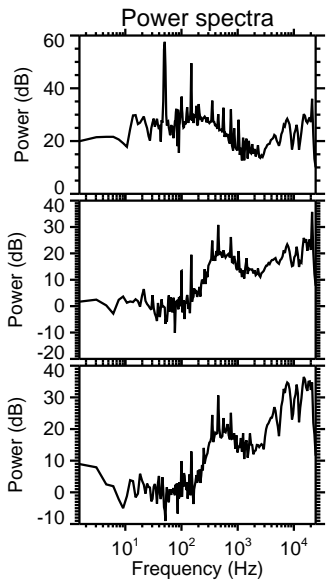
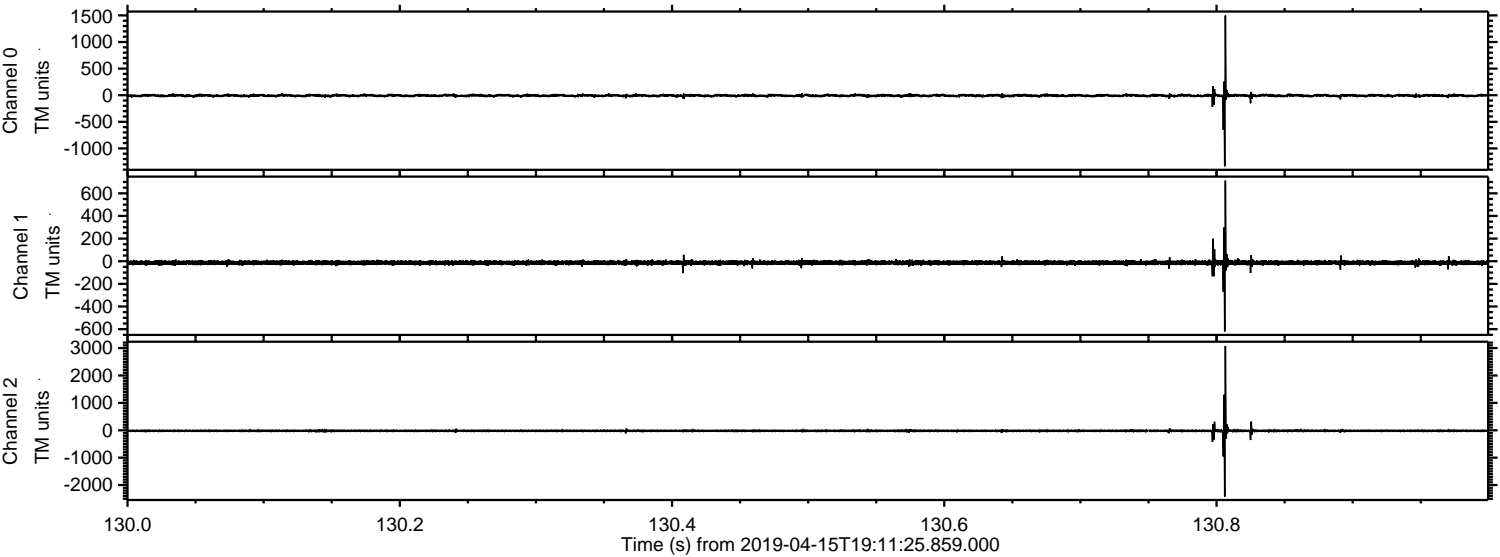


Processed Mon Apr 15 21:19:16 2019 by ELM ver.2012-10-06 from 001__elm20190415_191124__dat00.bin

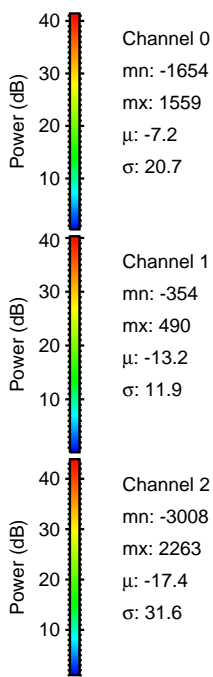
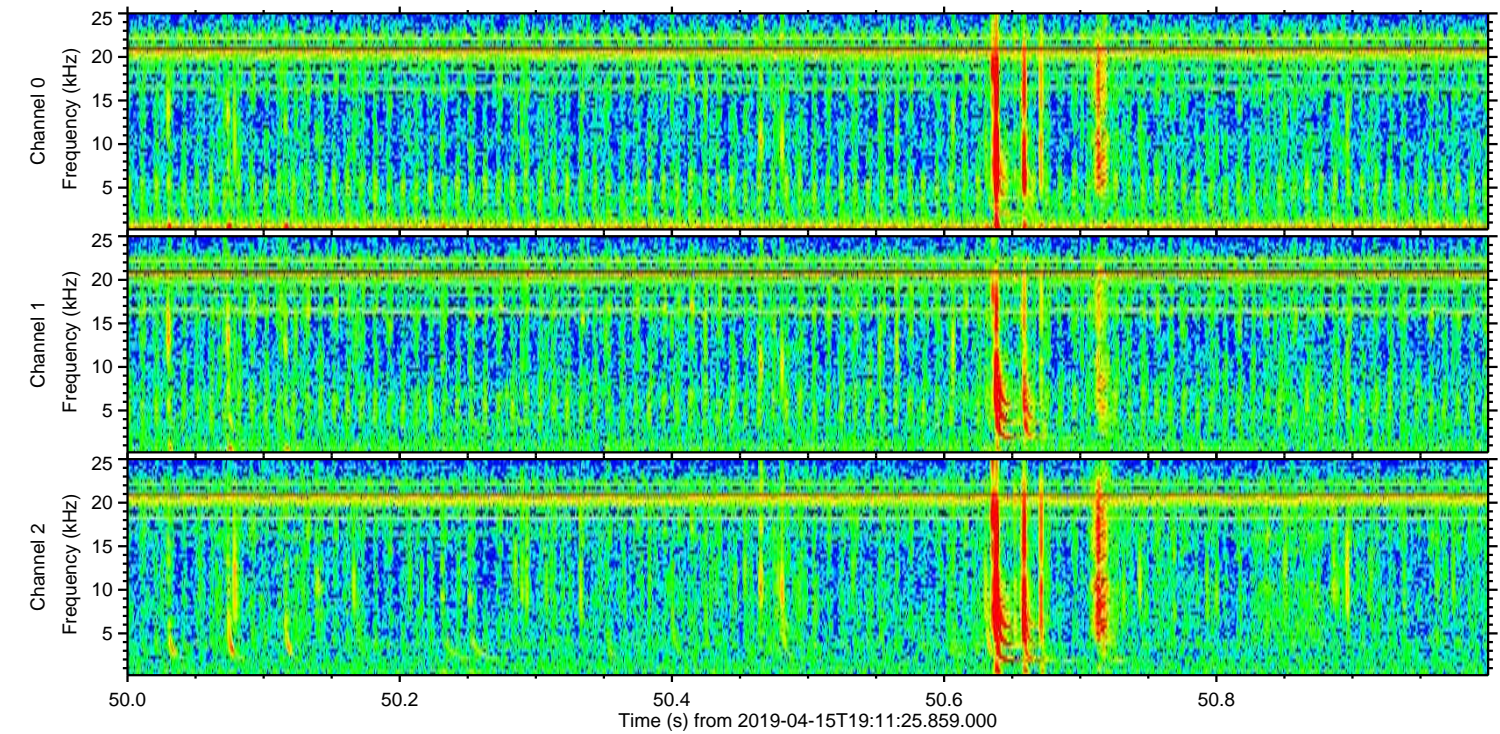
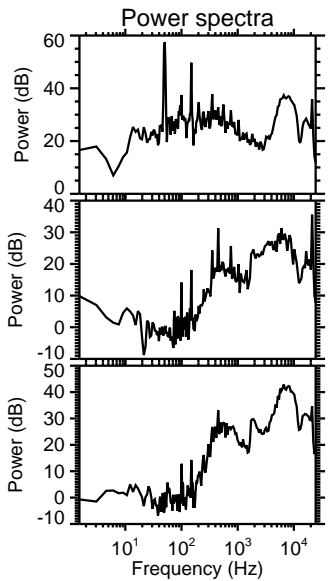
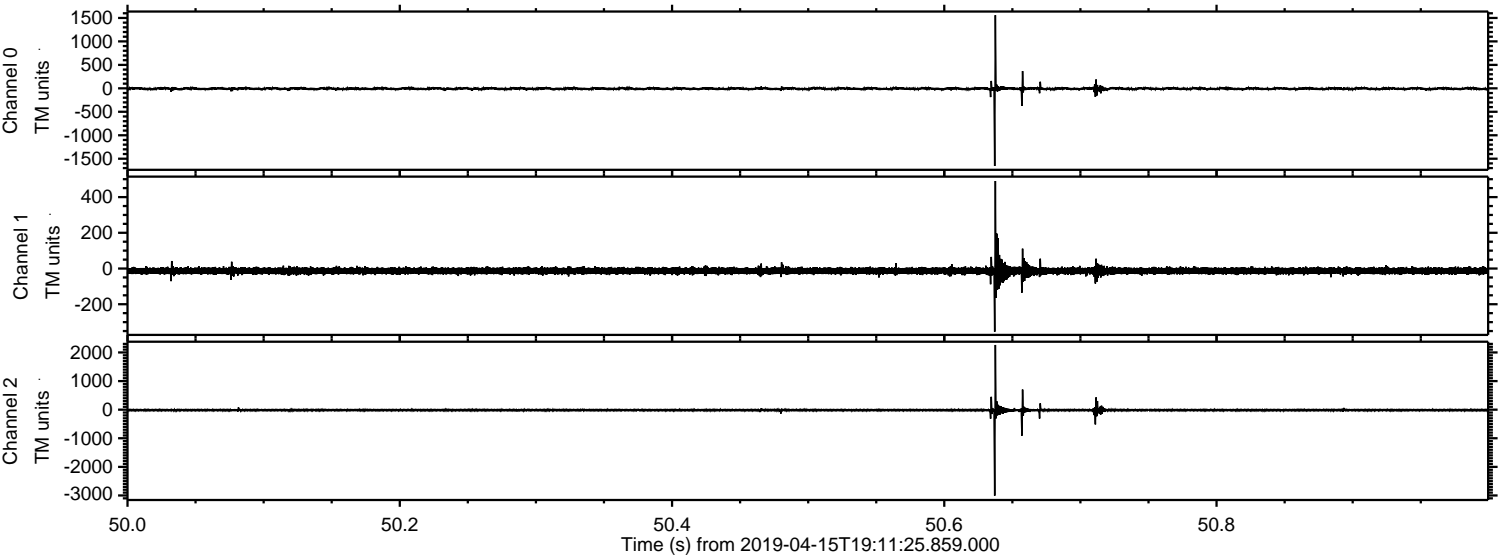


ELMAVAN 3D WAVEFORMS (Measured data sampled at 50 kHz) 51000 packets of 144 samples from 2019-04-15T19:11:25.859.000. Part 131/147

Processed Mon Apr 15 21:19:17 2019 by ELM ver.2012-10-06 from 001__elm20190415_191124__dat00.bin



Processed Mon Apr 15 21:19:18 2019 by ELM ver.2012-10-06 from 001__elm20190415_191124__dat00.bin



Channel 0
mn: -1654
mx: 1559
 μ : -7.2
 σ : 20.7

Channel 1
mn: -354
mx: 490
 μ : -13.2
 σ : 11.9

Channel 2
mn: -3008
mx: 2263
 μ : -17.4
 σ : 31.6

