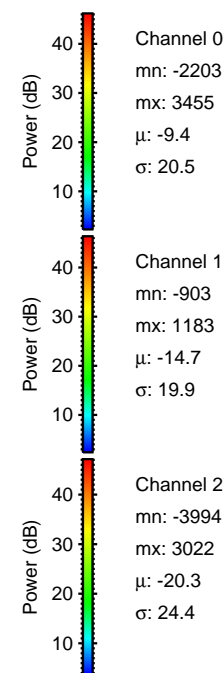
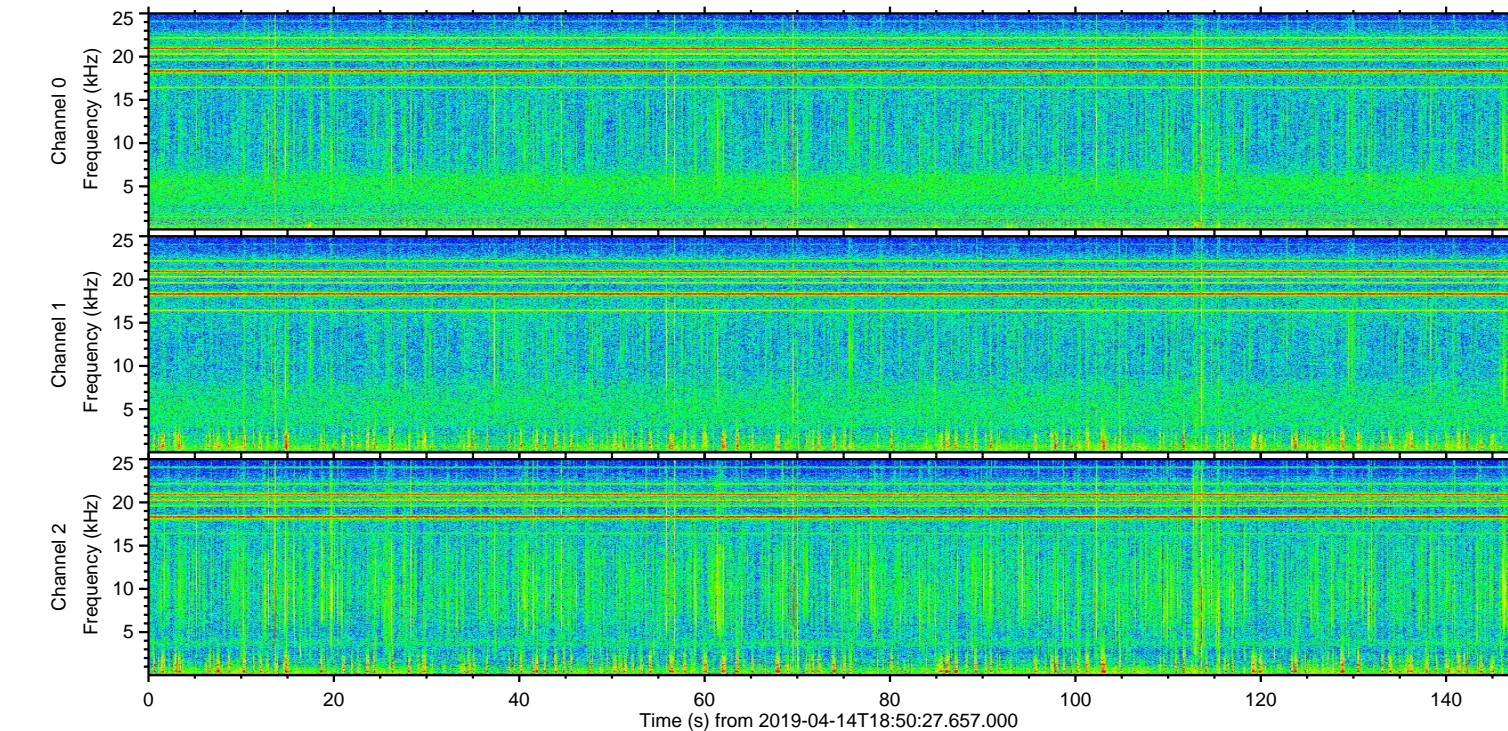
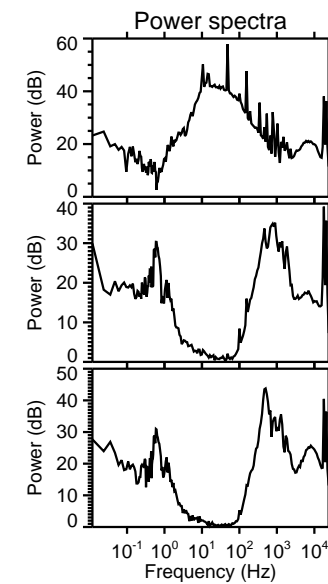
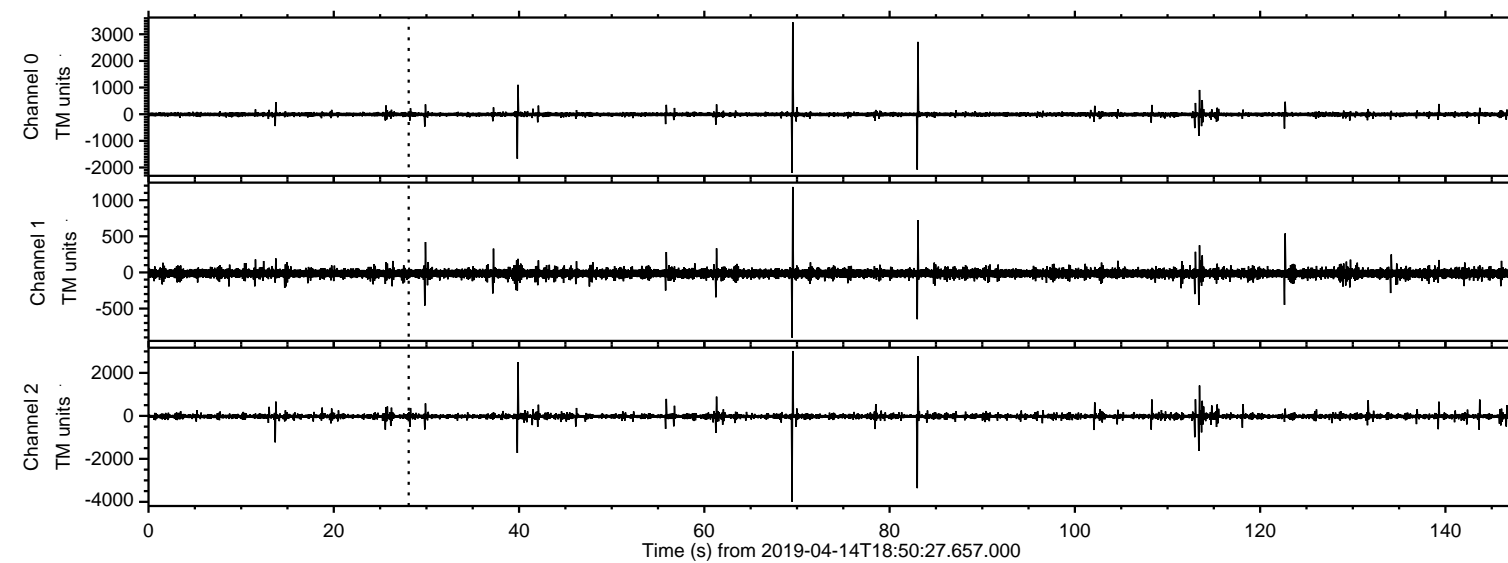


ELMAVAN 3D WAVEFORMS (Measured data sampled at 50 kHz) 50999 packets of 144 samples from 2019-04-14T18:50:27.657.000.

Processed Sun Apr 14 20:58:34 2019 by ELM ver.2012-10-06 from 001__elm20190414_185026__dat00.bin

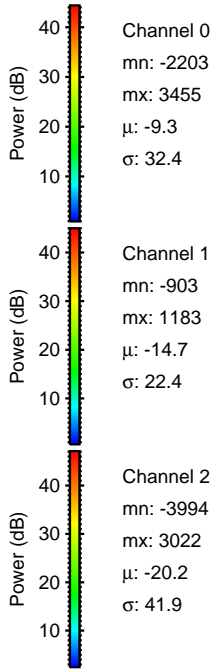
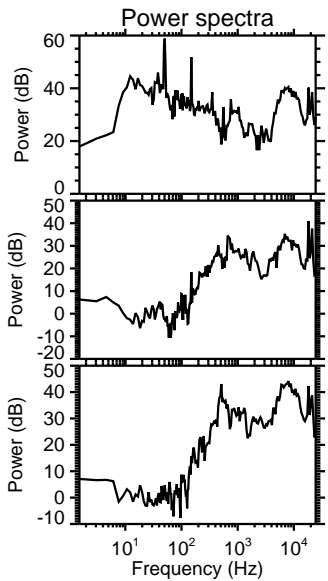
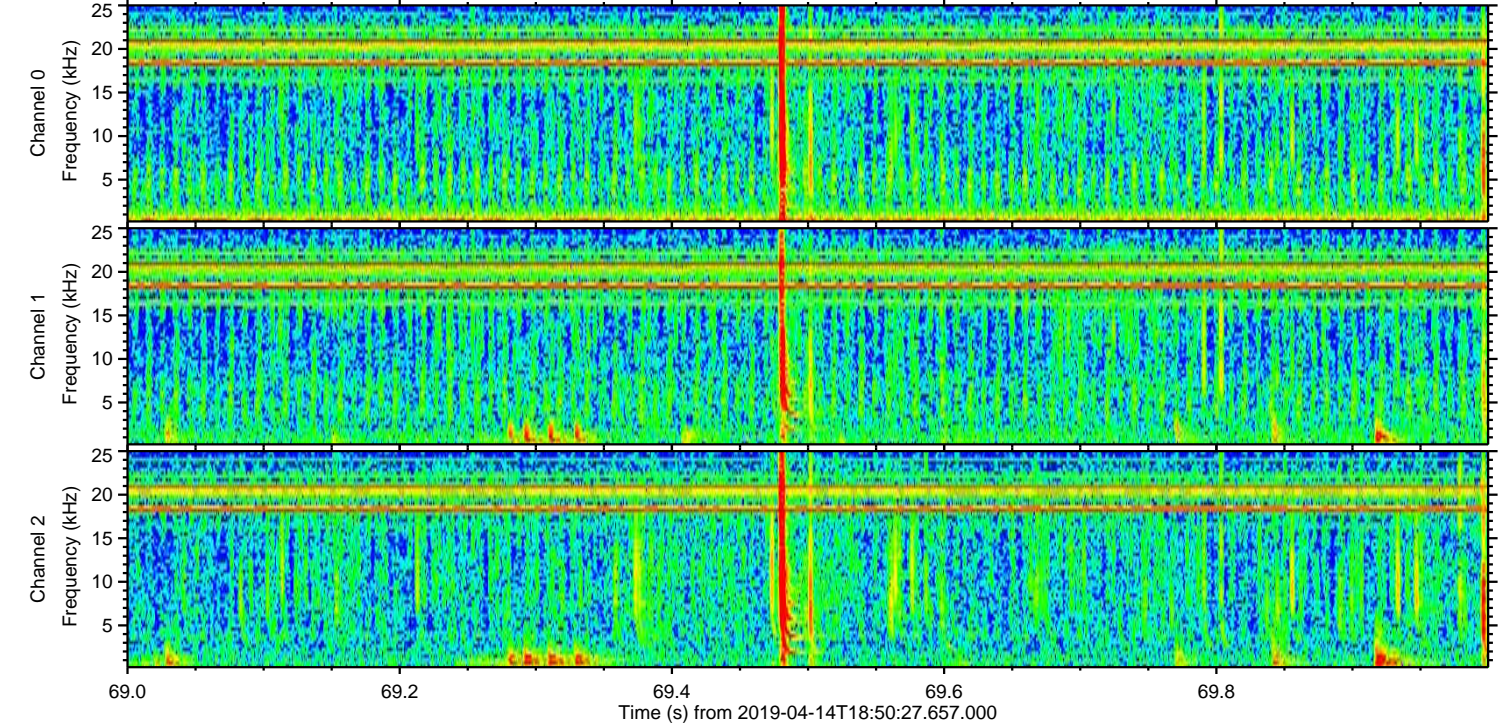
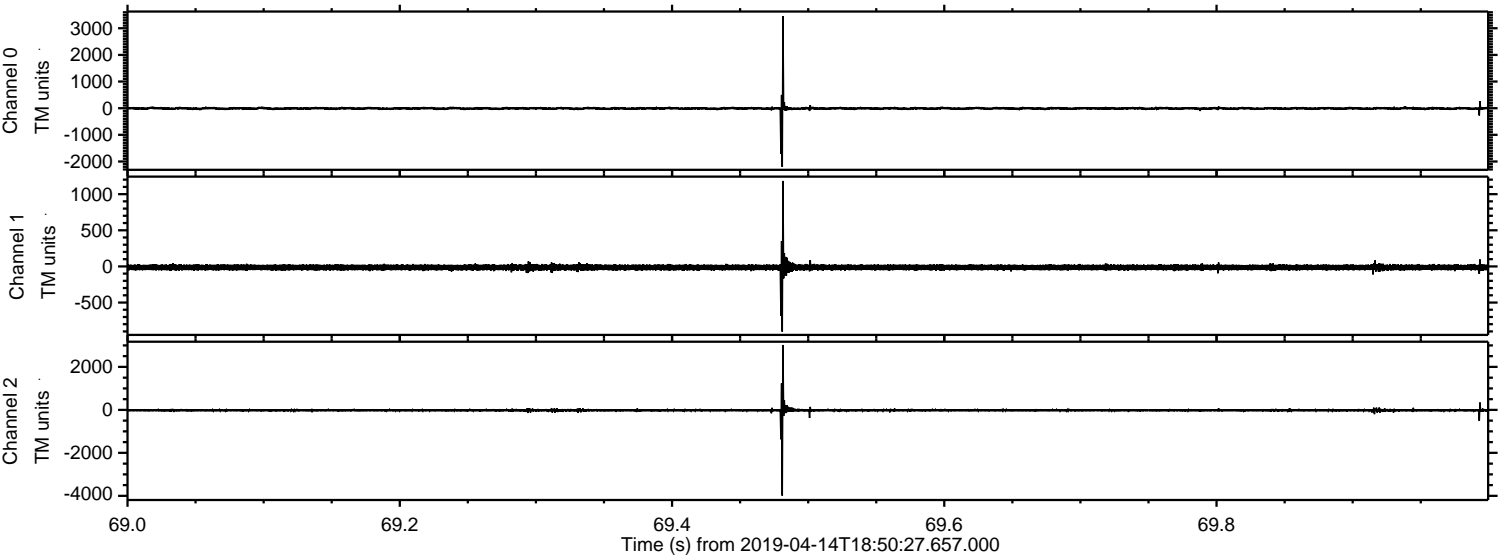


Channel 0
mn: -2203
mx: 3455
 μ : -9.4
 σ : 20.5

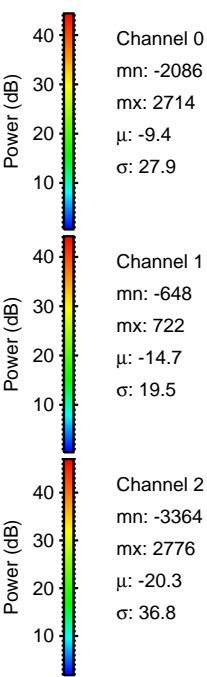
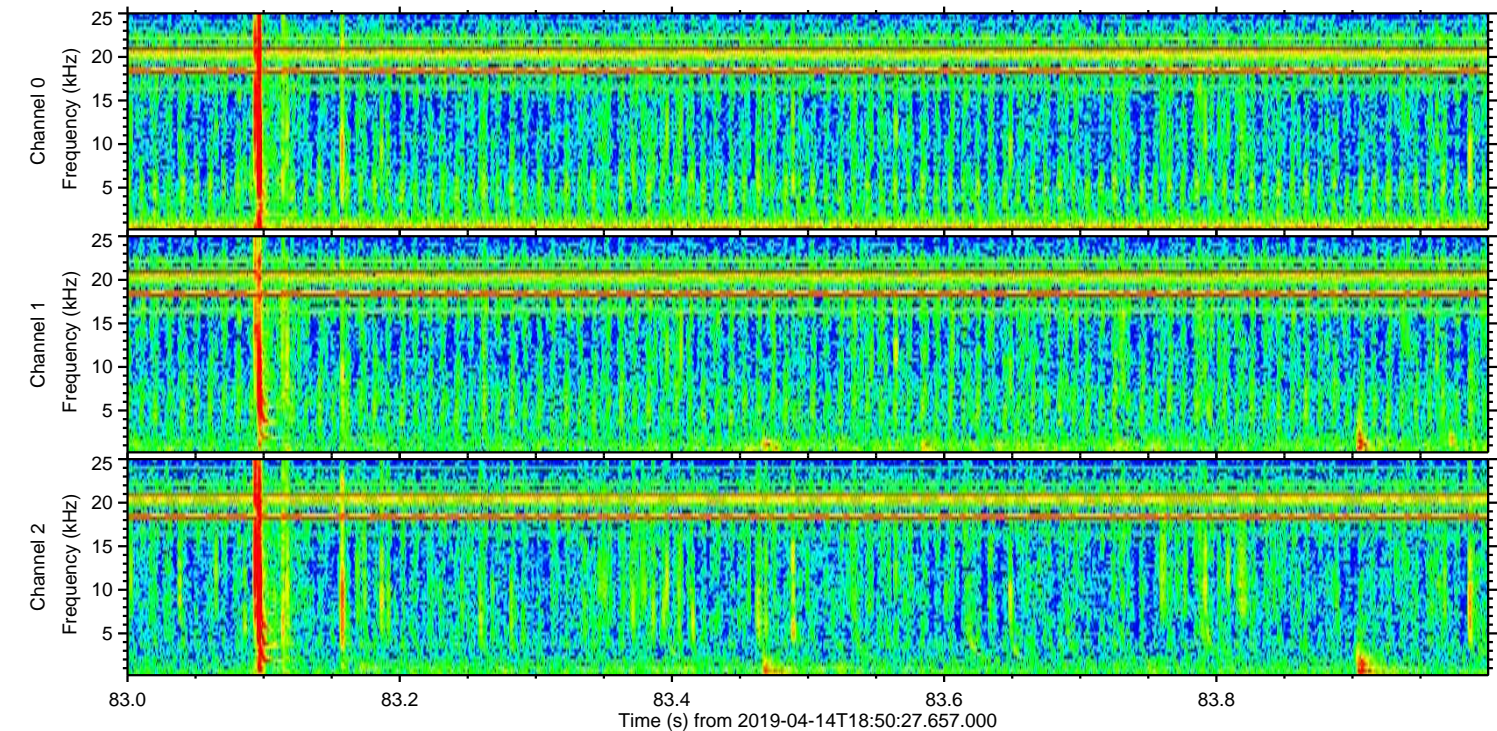
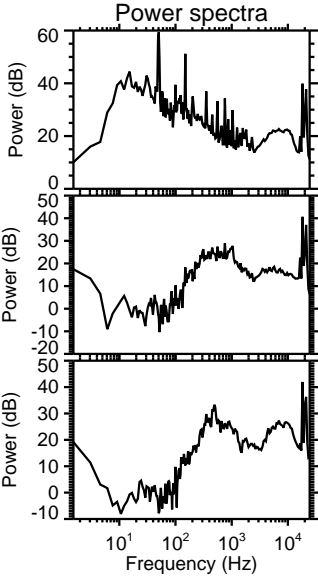
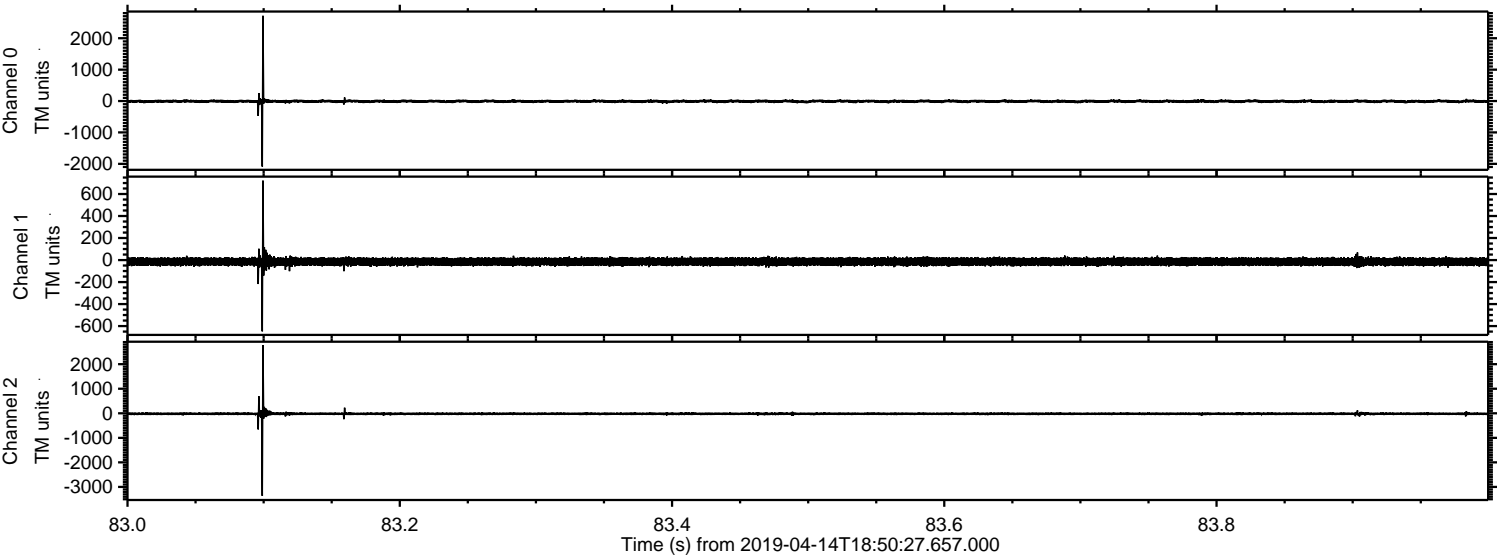
Channel 1
mn: -903
mx: 1183
 μ : -14.7
 σ : 19.9

Channel 2
mn: -3994
mx: 3022
 μ : -20.3
 σ : 24.4

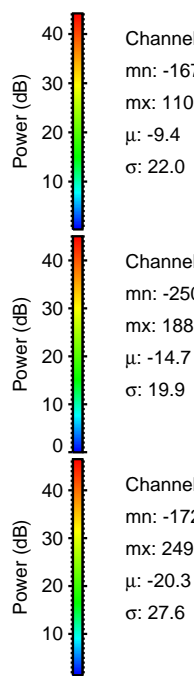
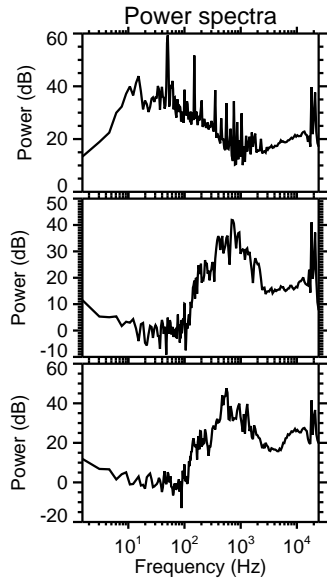
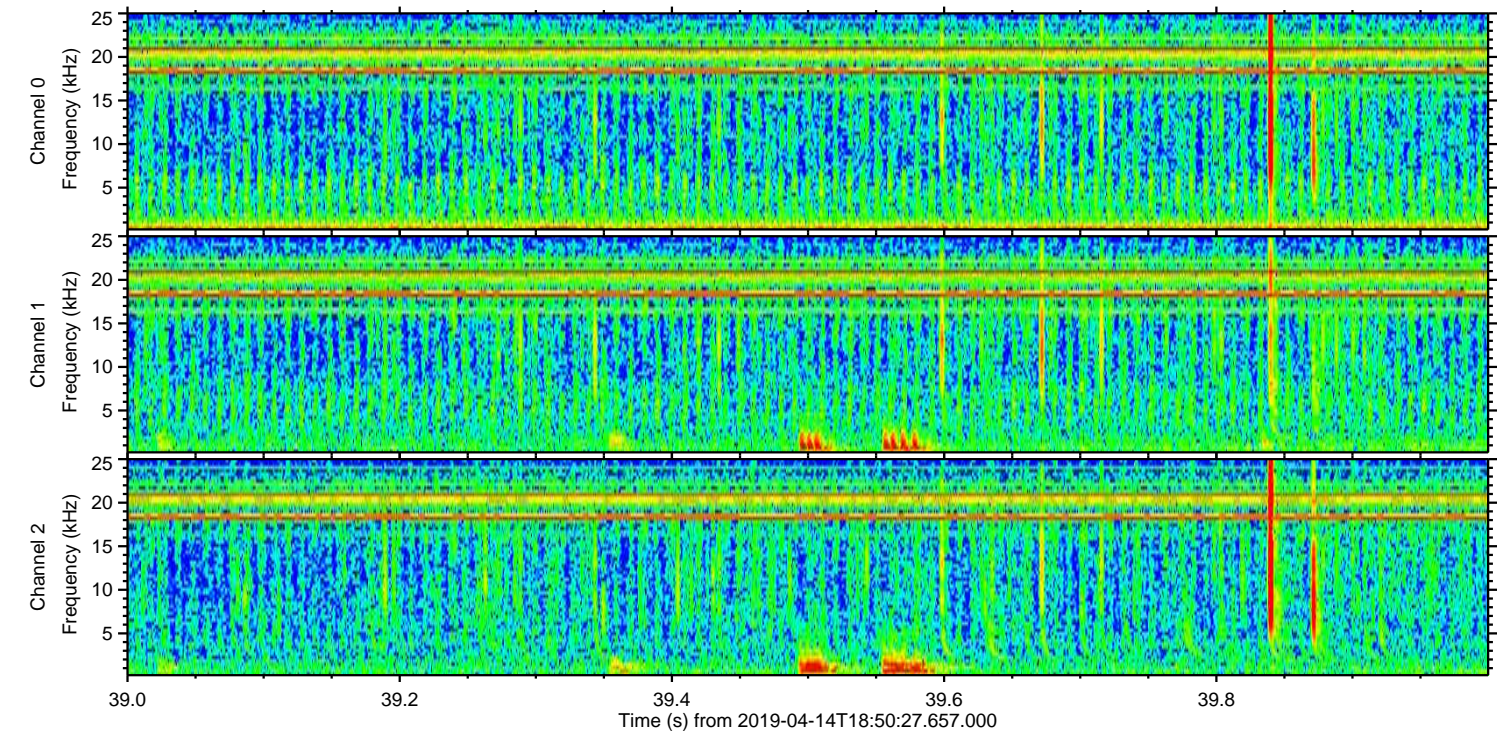
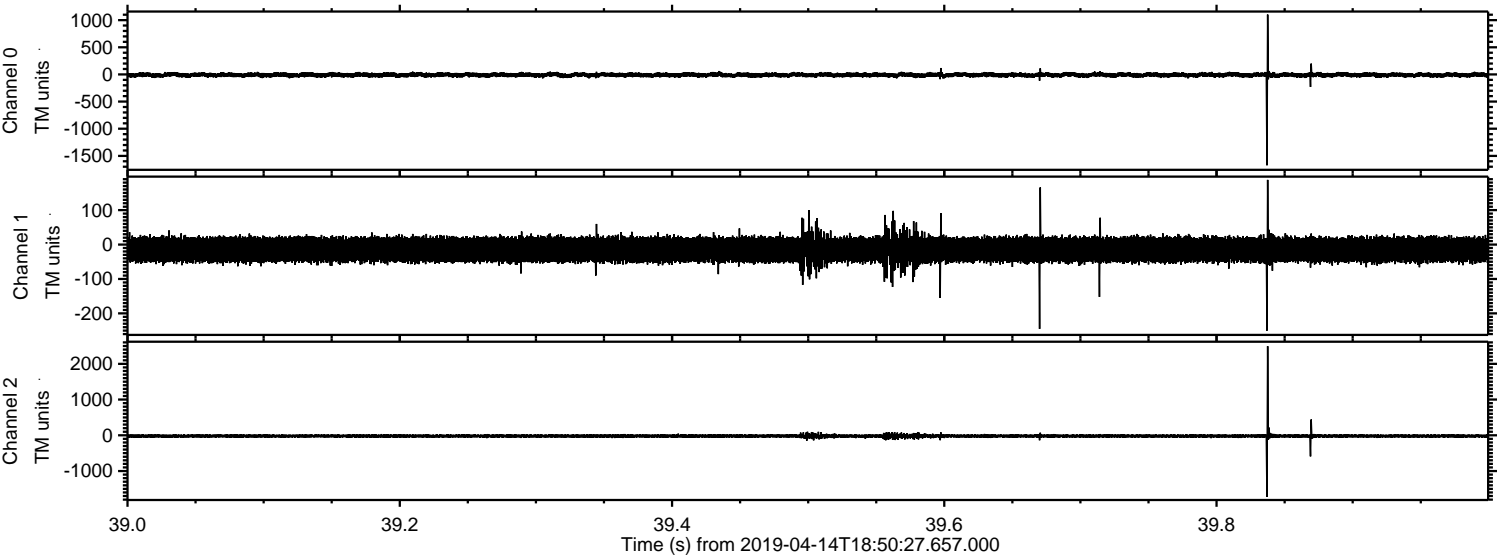
Processed Sun Apr 14 20:58:40 2019 by ELM ver.2012-10-06 from 001__elm20190414_185026__dat00.bin



Processed Sun Apr 14 20:58:41 2019 by ELM ver.2012-10-06 from 001__elm20190414_185026__dat00.bin



Processed Sun Apr 14 20:58:41 2019 by ELM ver.2012-10-06 from 001__elm20190414_185026__dat00.bin



Power spectra

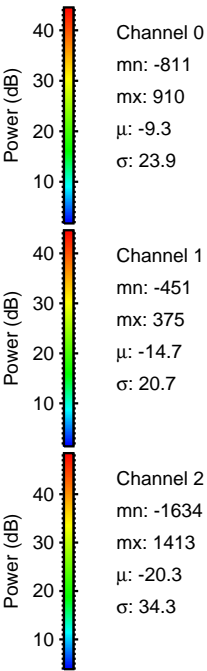
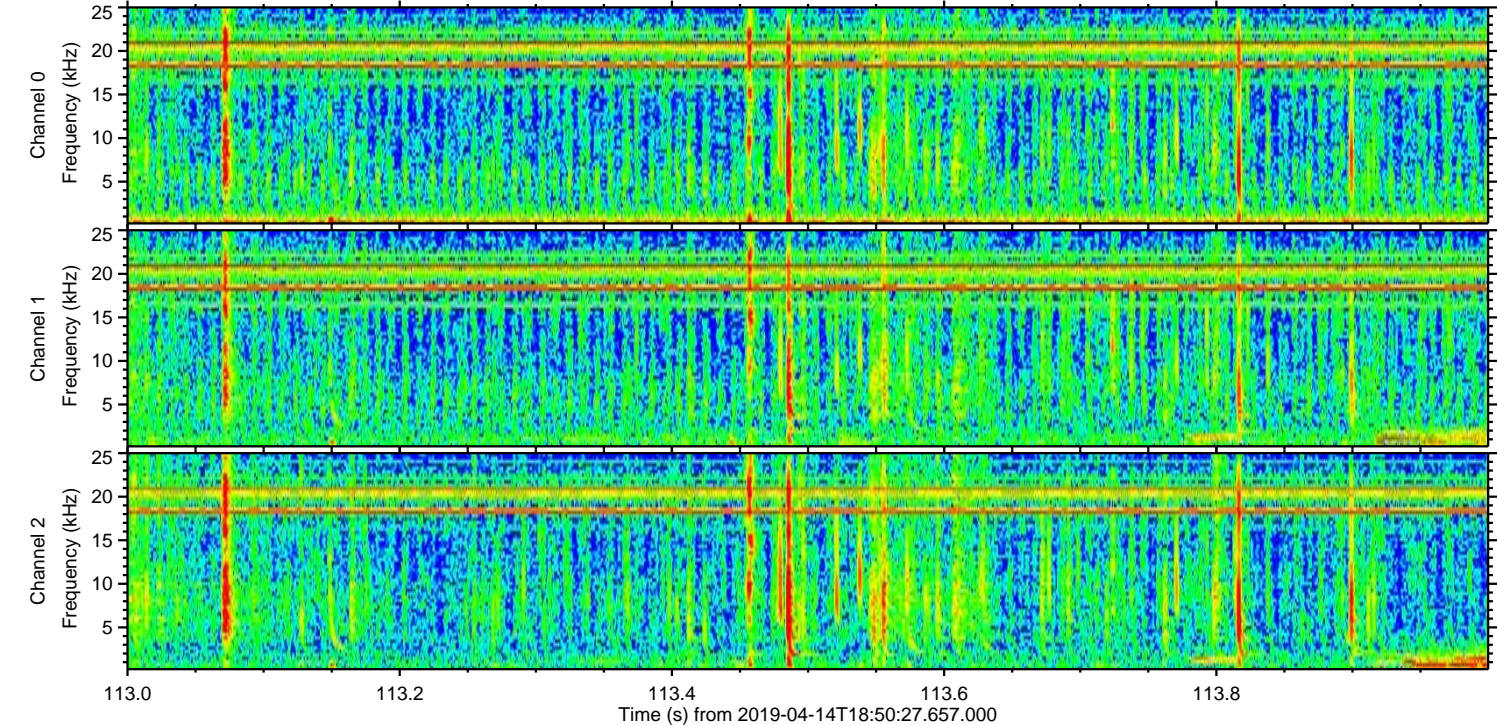
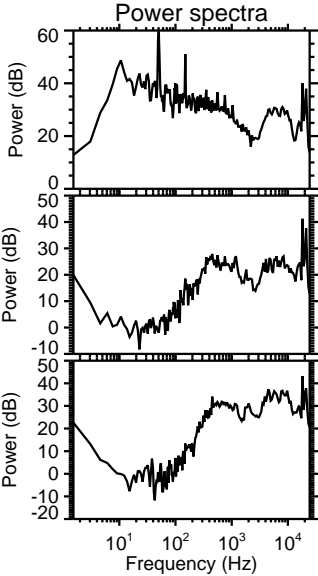
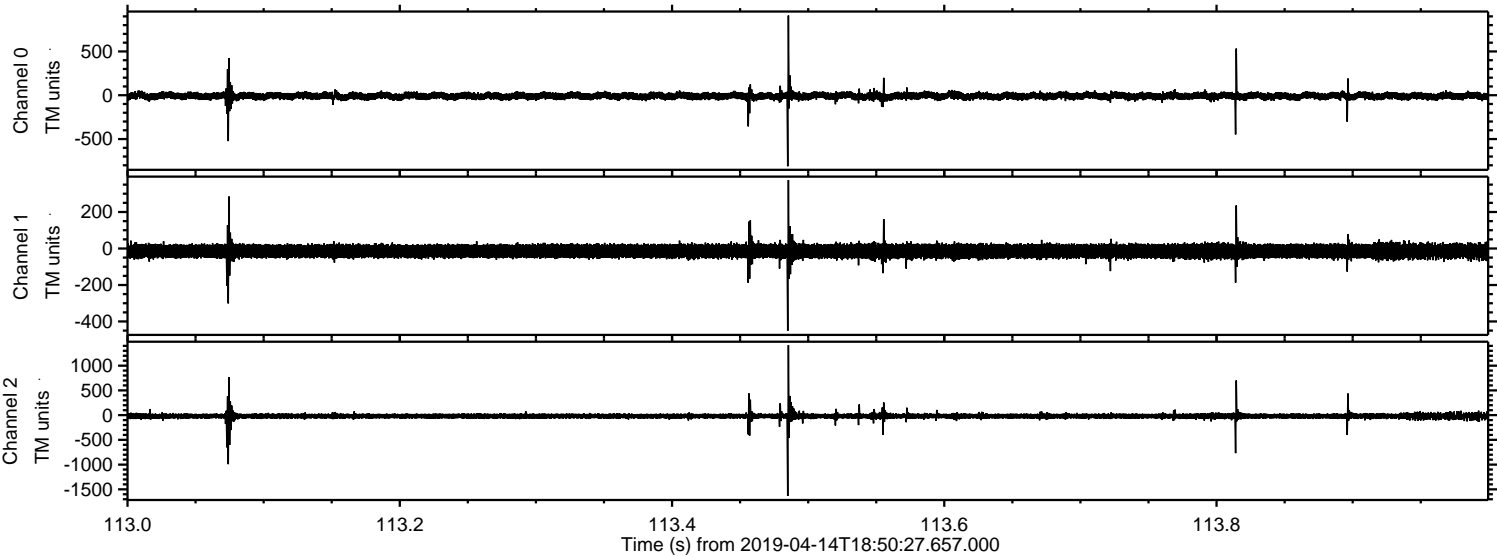
Channel 0
mn: -1673
mx: 1103
 μ : -9.4
 σ : 22.0

Channel 1
mn: -250
mx: 188
 μ : -14.7
 σ : 19.9

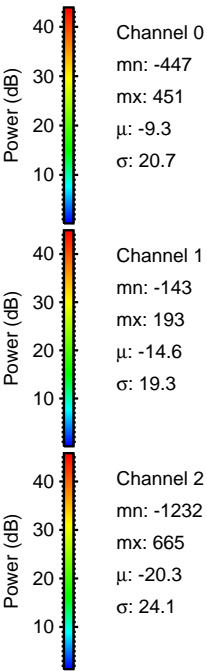
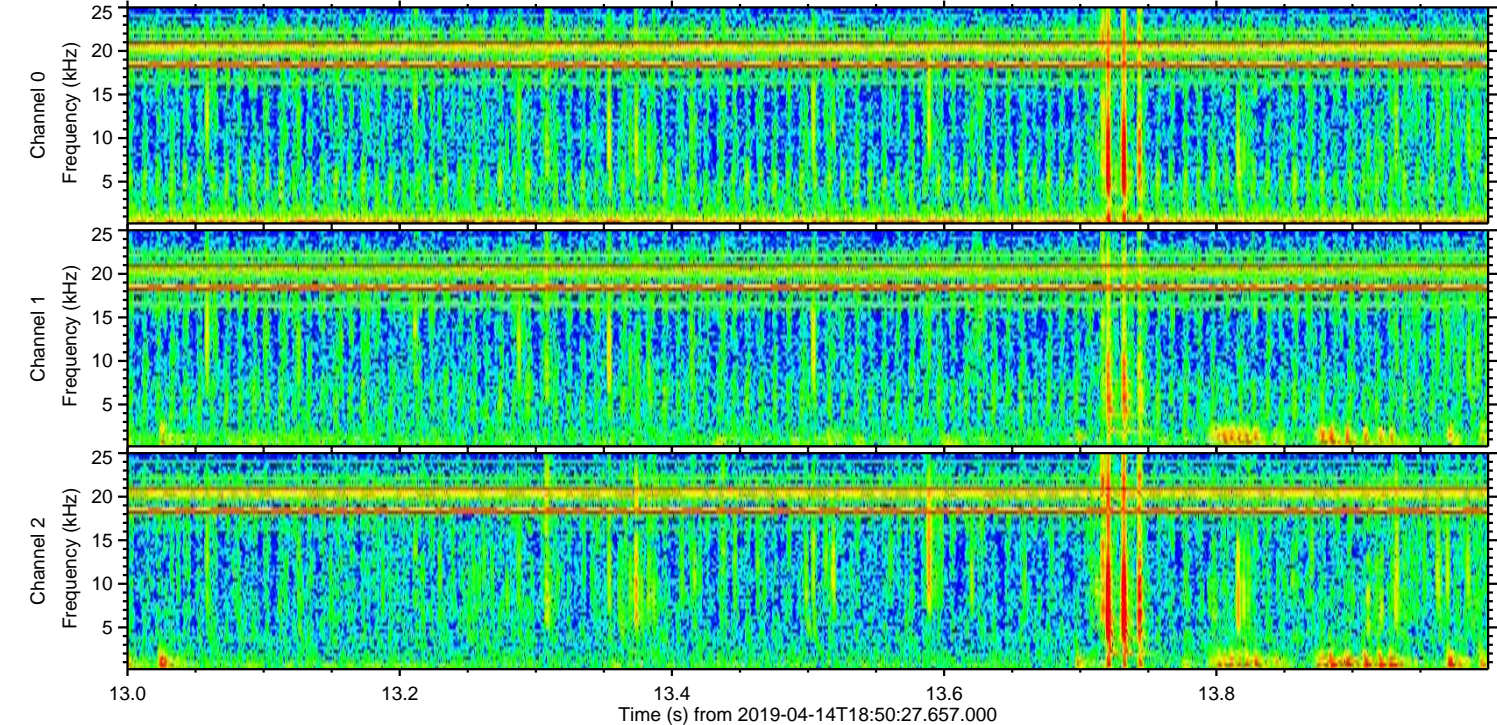
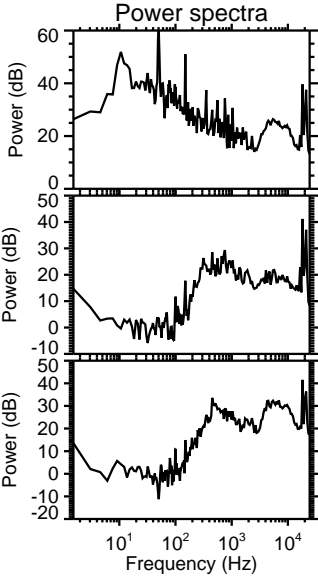
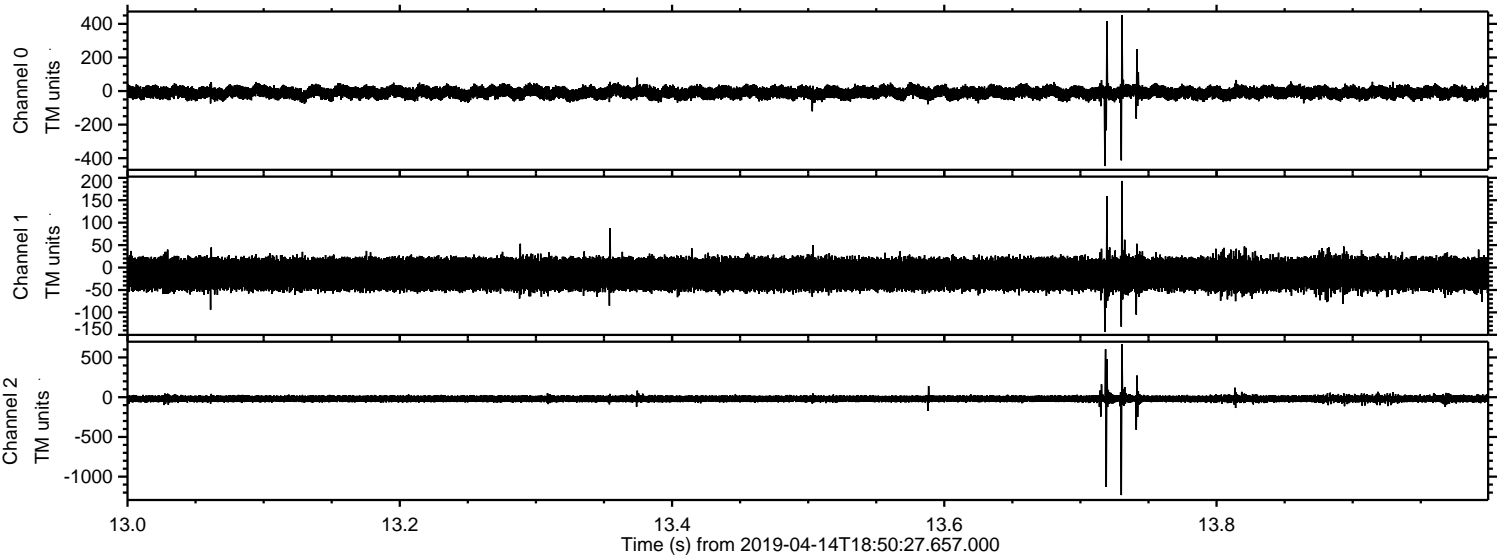
Channel 2
mn: -1725
mx: 2495
 μ : -20.3
 σ : 27.6

ELMAVAN 3D WAVEFORMS (Measured data sampled at 50 kHz) 50999 packets of 144 samples from 2019-04-14T18:50:27.657.000. Part 114/147

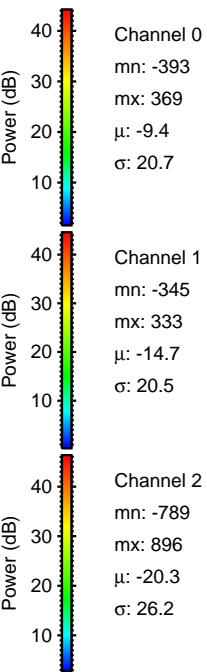
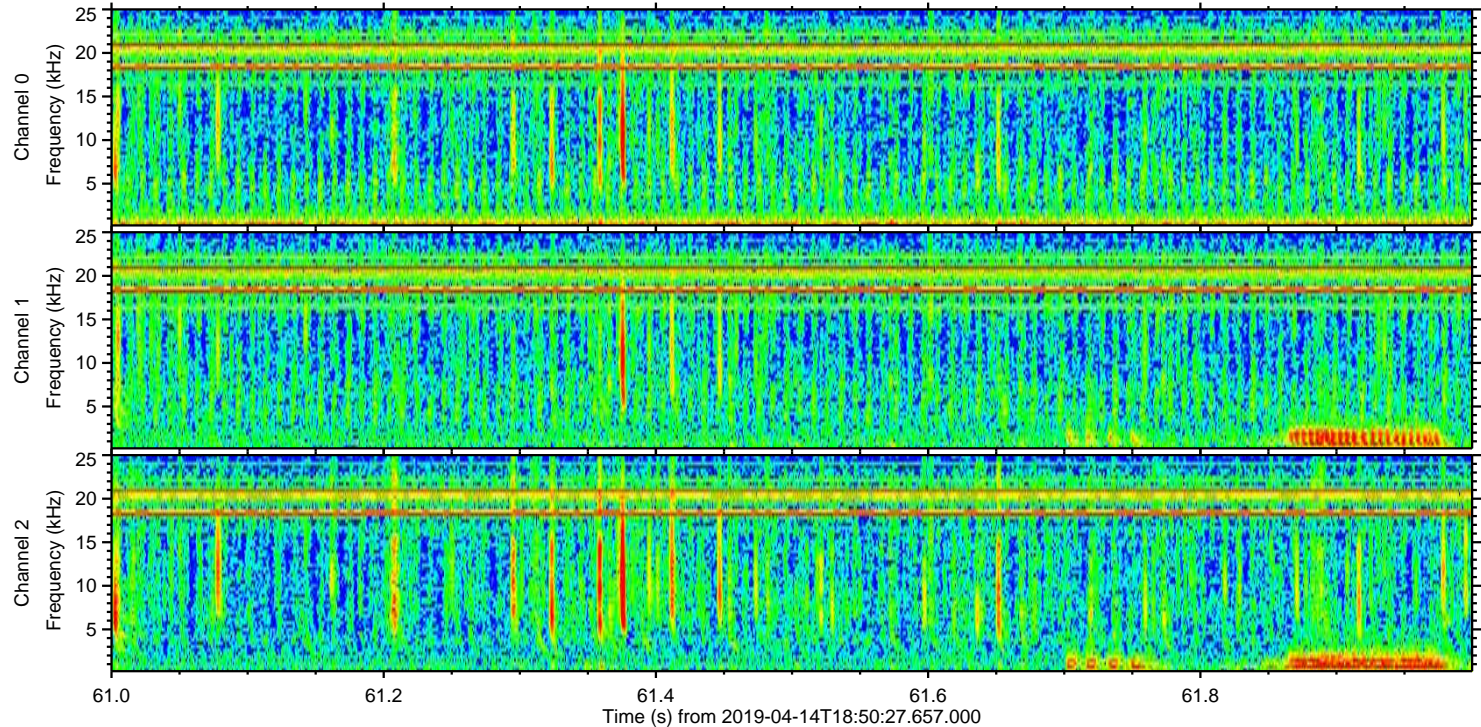
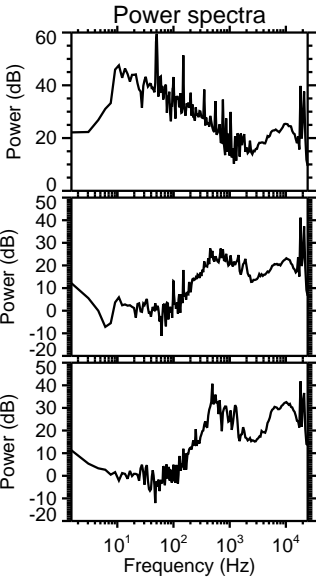
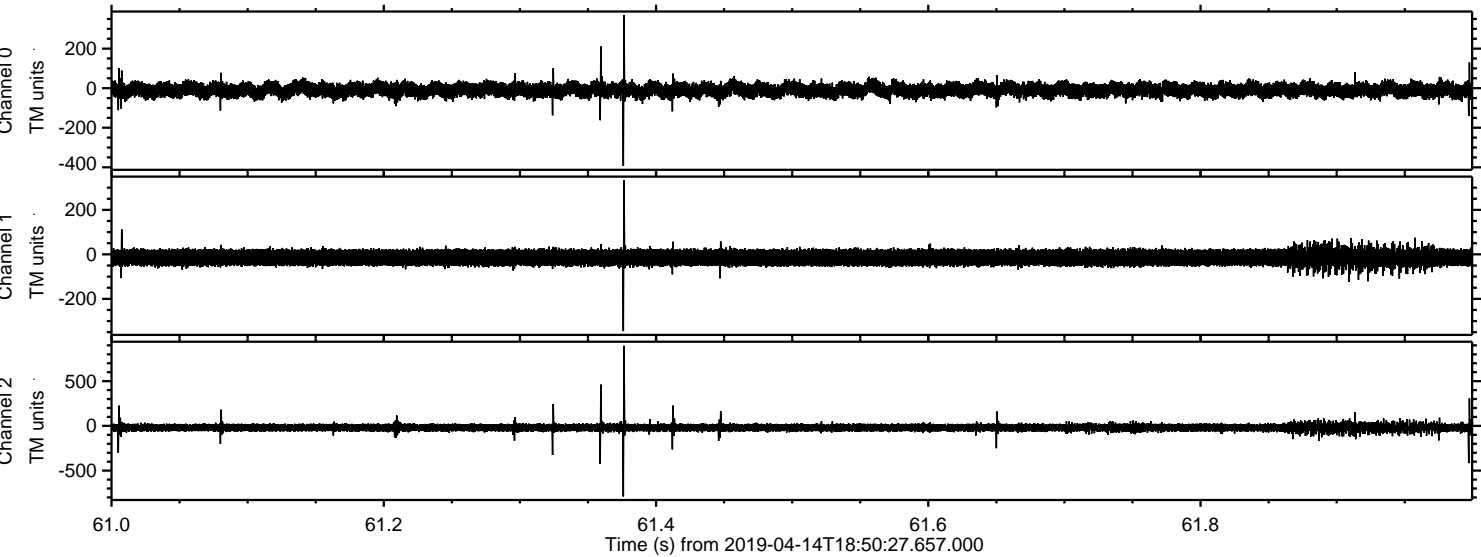
Processed Sun Apr 14 20:58:42 2019 by ELM ver.2012-10-06 from 001__elm20190414_185026__dat00.bin



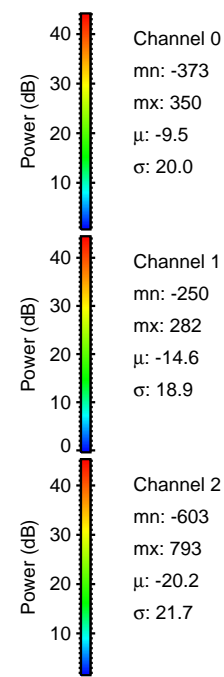
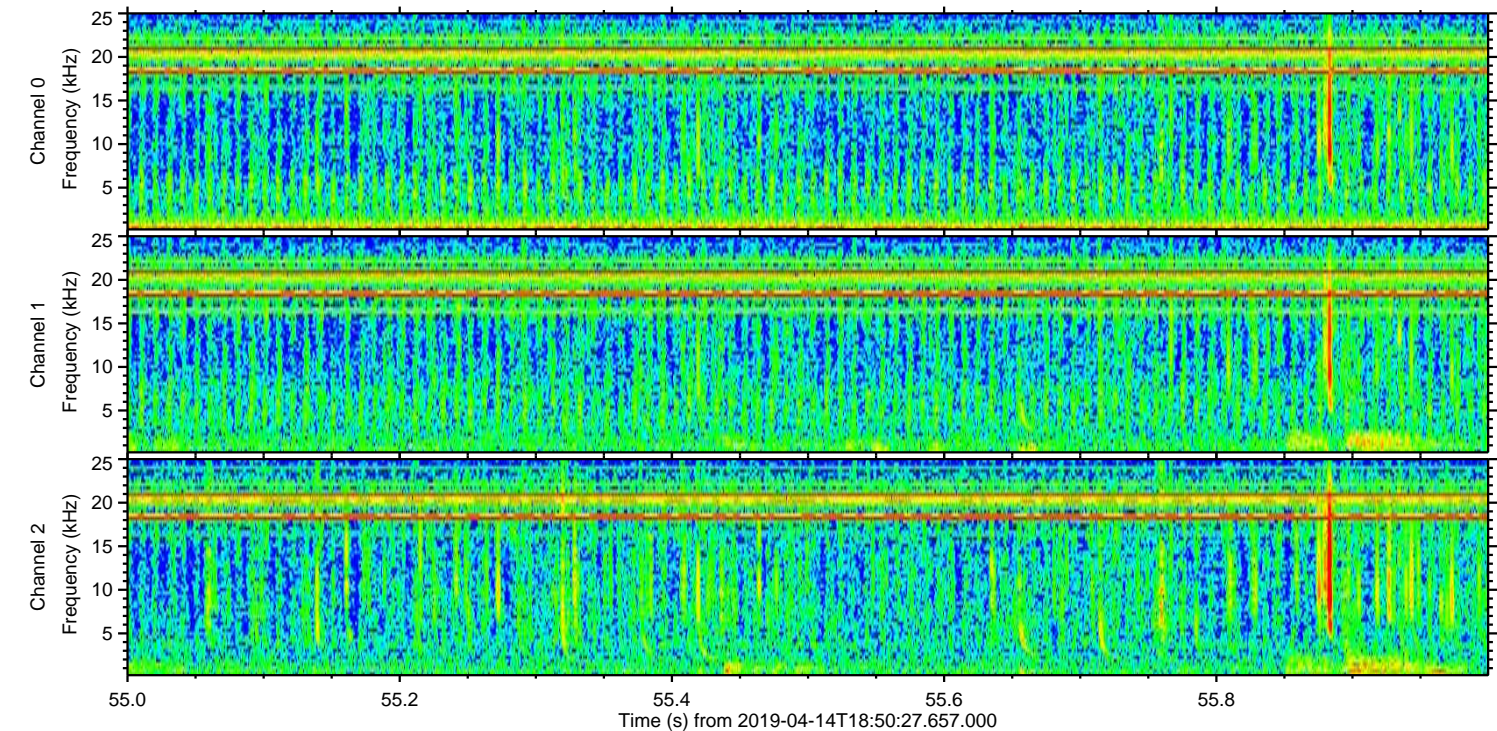
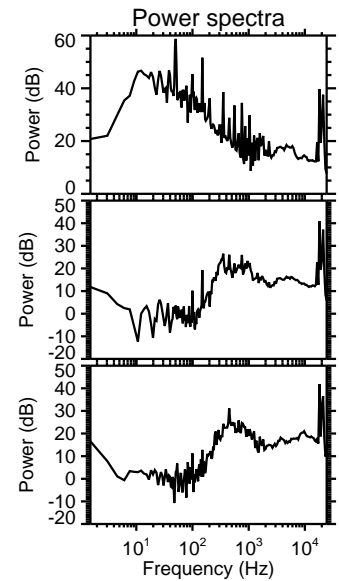
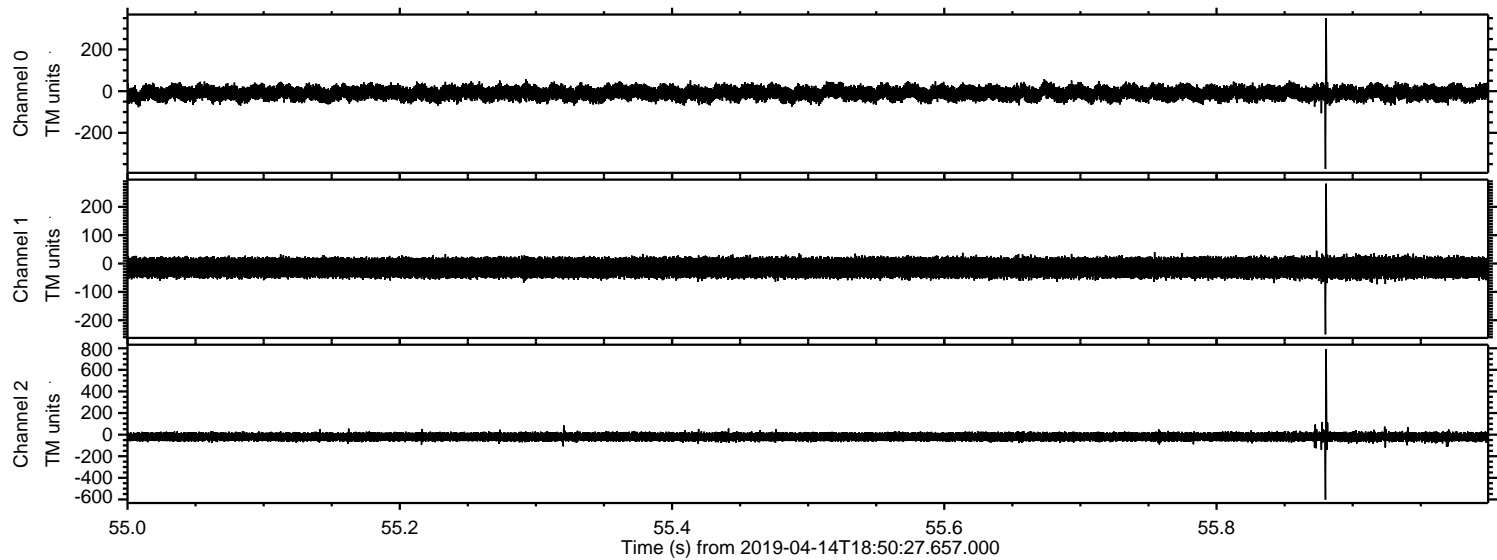
Processed Sun Apr 14 20:58:42 2019 by ELM ver.2012-10-06 from 001__elm20190414_185026__dat00.bin

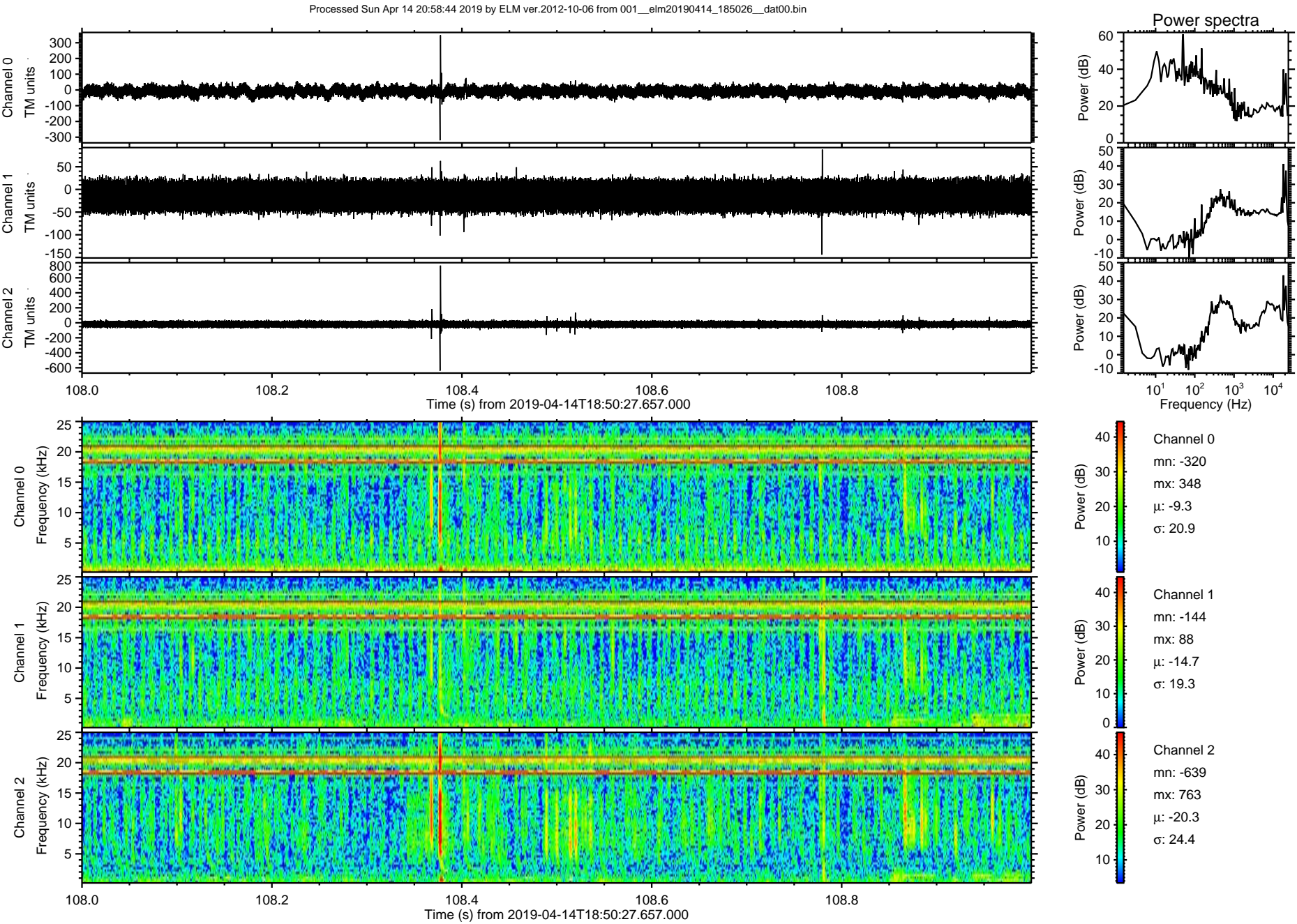


Processed Sun Apr 14 20:58:43 2019 by ELM ver.2012-10-06 from 001__elm20190414_185026__dat00.bin



Processed Sun Apr 14 20:58:44 2019 by ELM ver.2012-10-06 from 001__elm20190414_185026__dat00.bin





ELMAVAN 3D WAVEFORMS (Measured data sampled at 50 kHz) 50999 packets of 144 samples from 2019-04-14T18:50:27.657.000. Part 144/147

