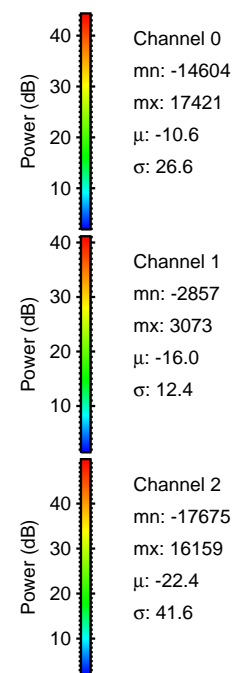
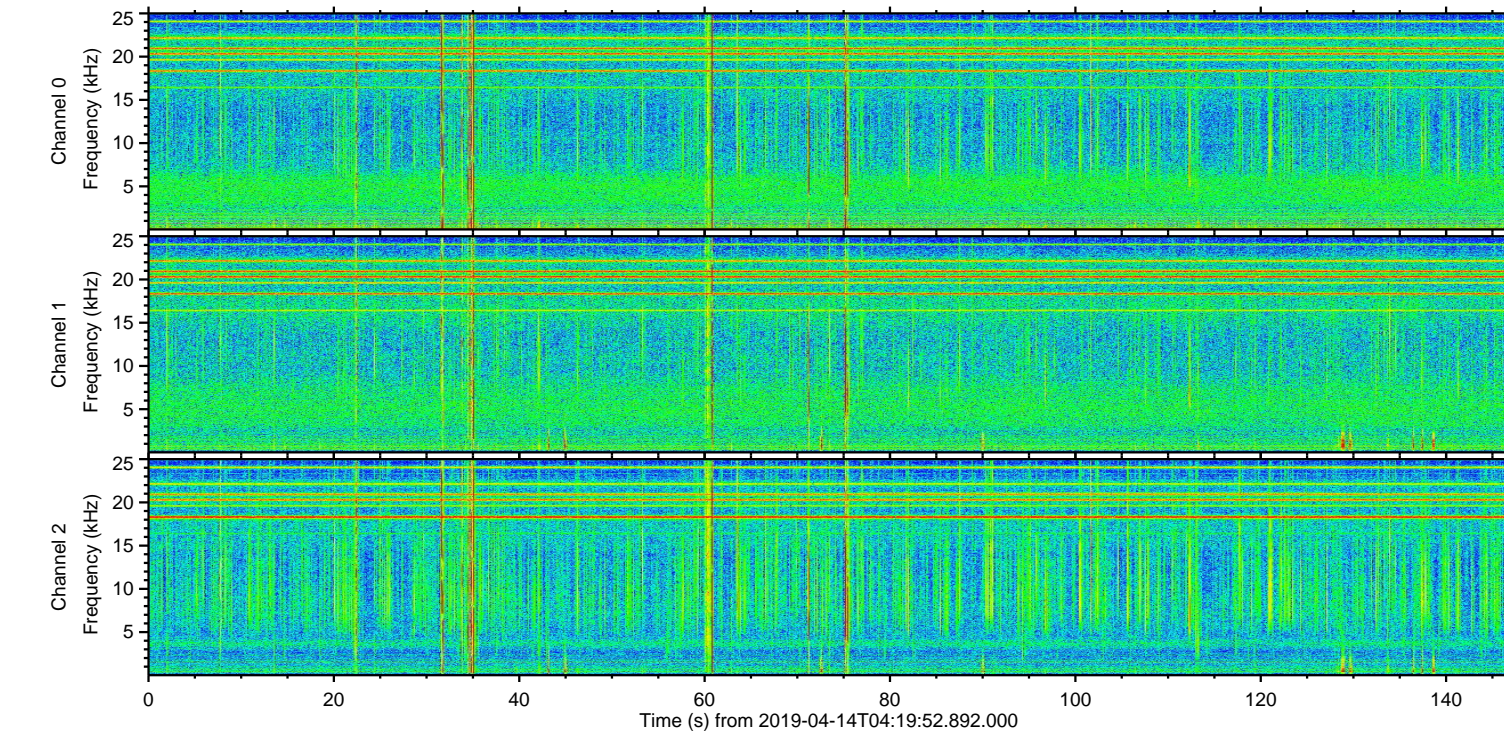
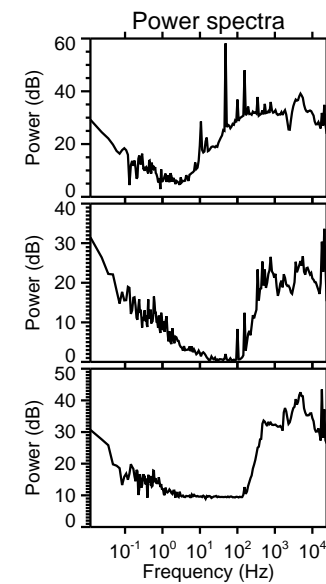
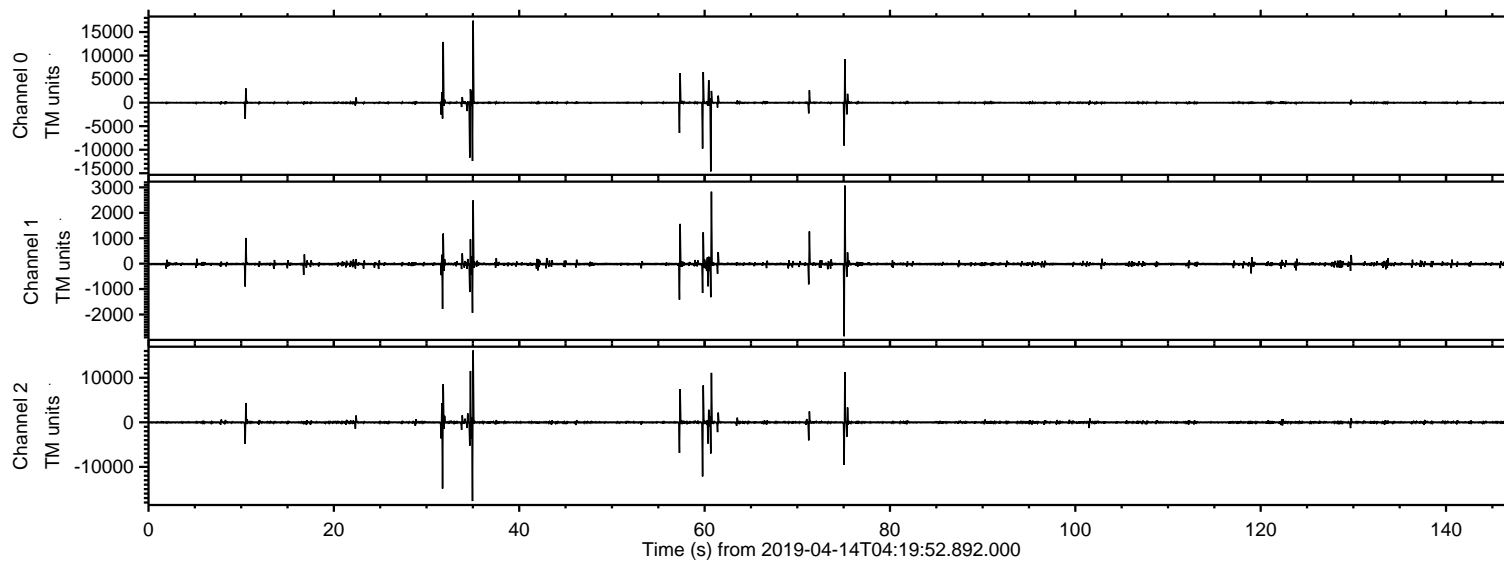


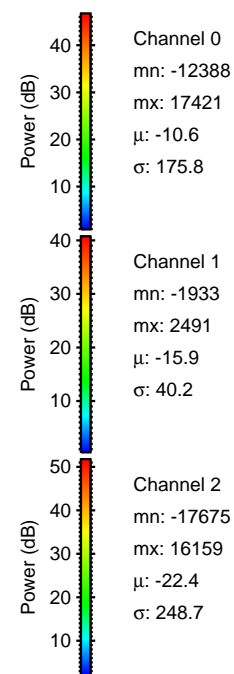
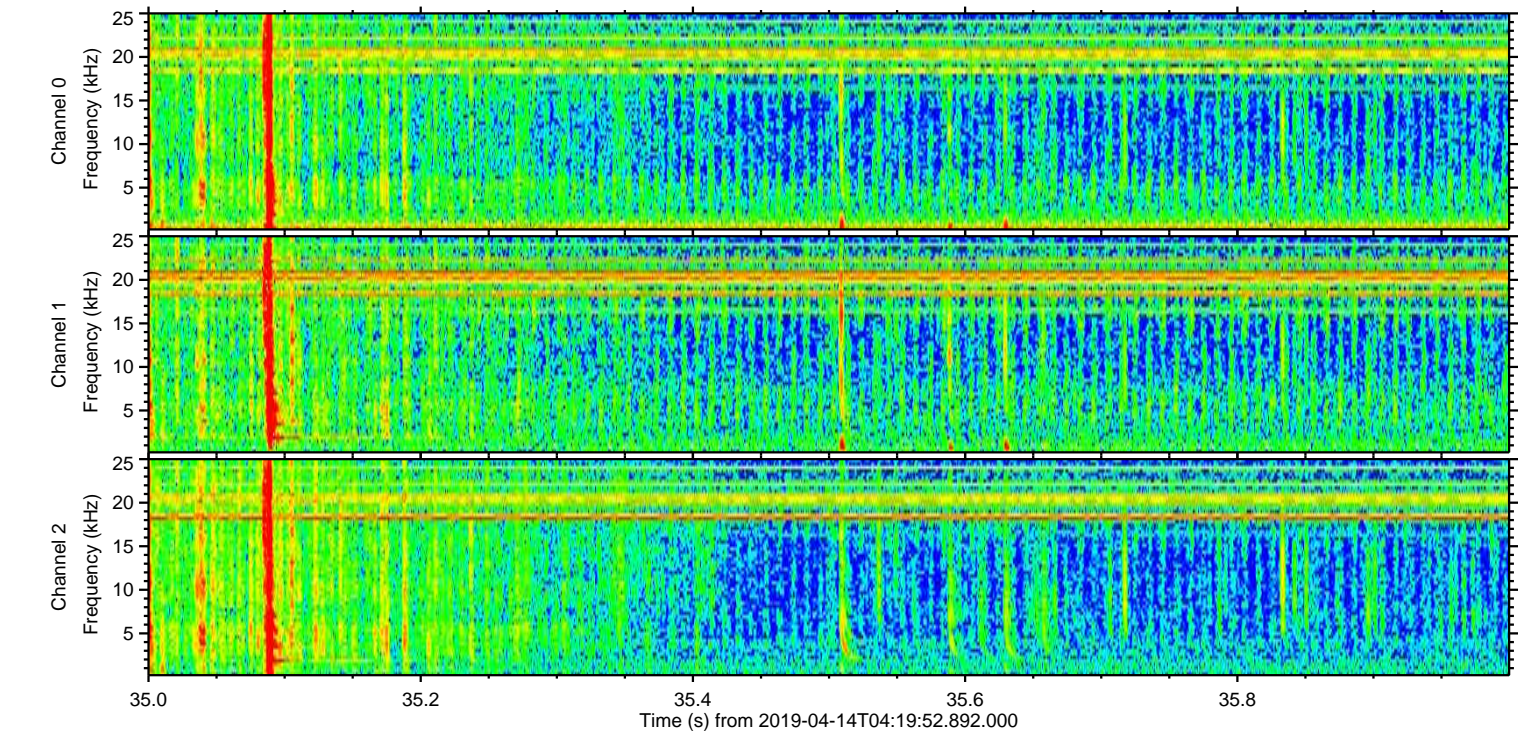
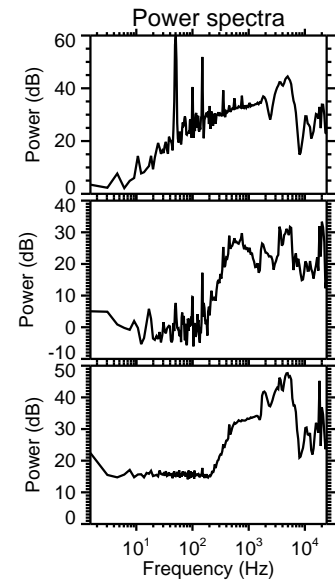
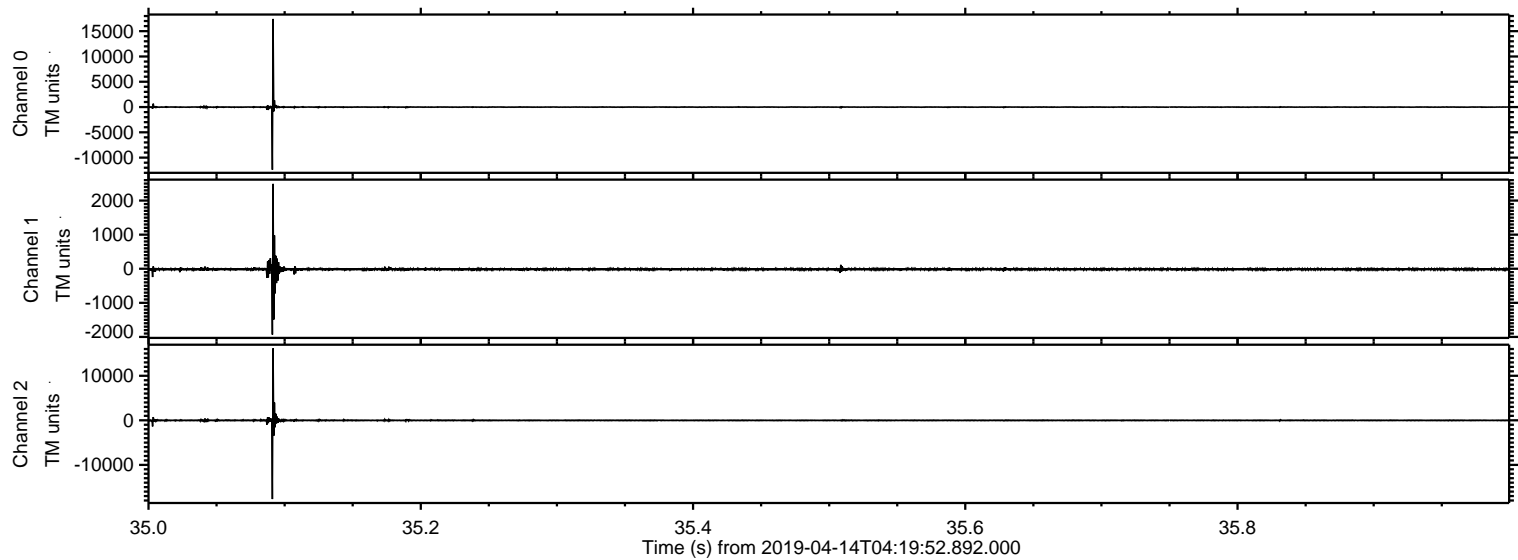
ELMAVAN 3D WAVEFORMS (Measured data sampled at 50 kHz) 51000 packets of 144 samples from 2019-04-14T04:19:52.892.000.

Processed Sun Apr 14 06:27:29 2019 by ELM ver.2012-10-06 from 001__elm20190414_041951__dat00.bin



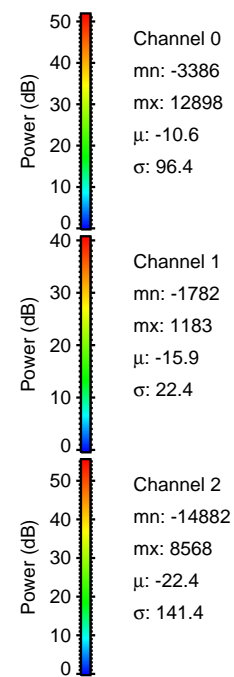
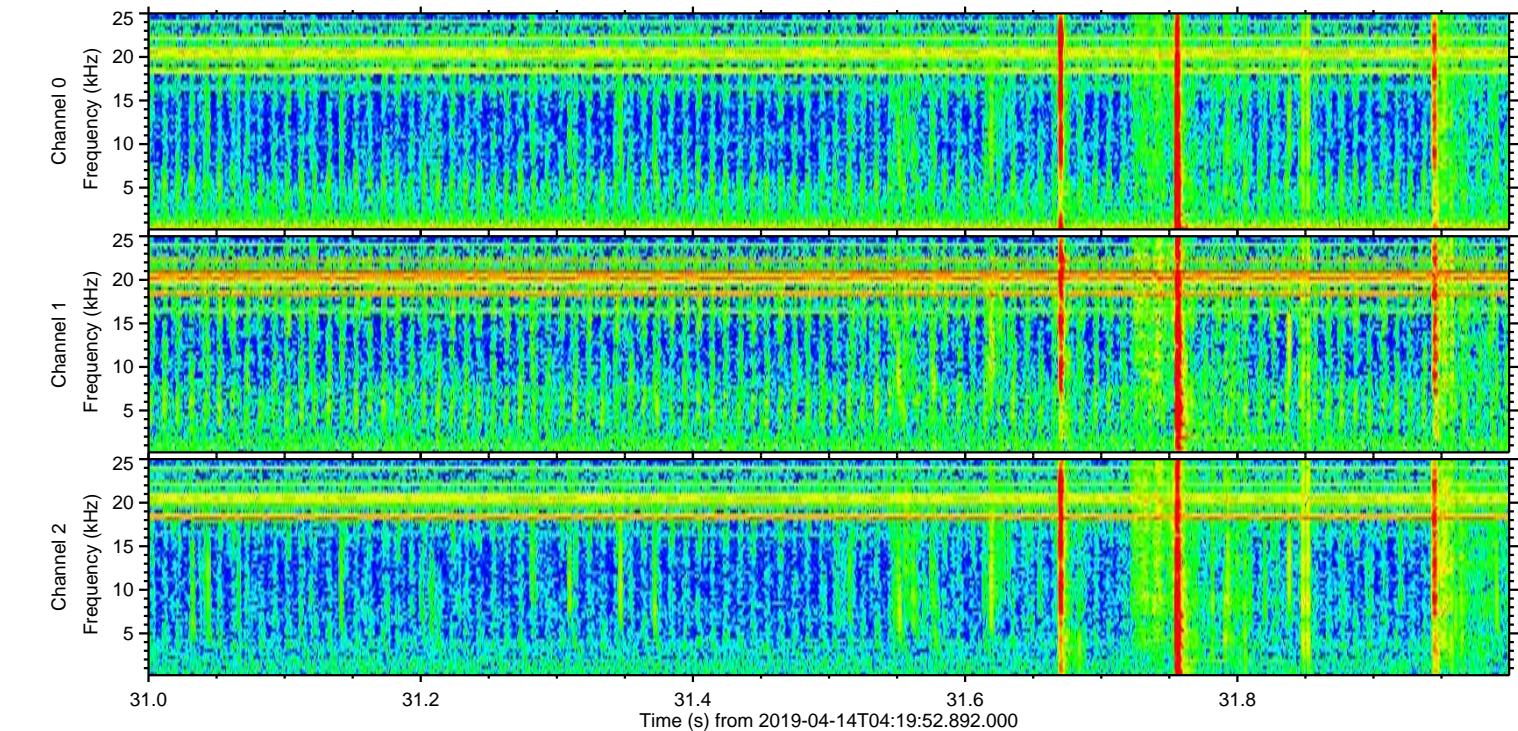
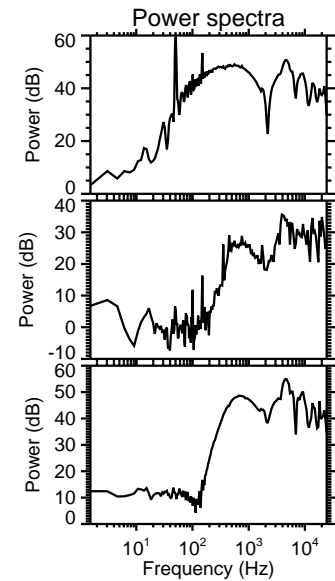
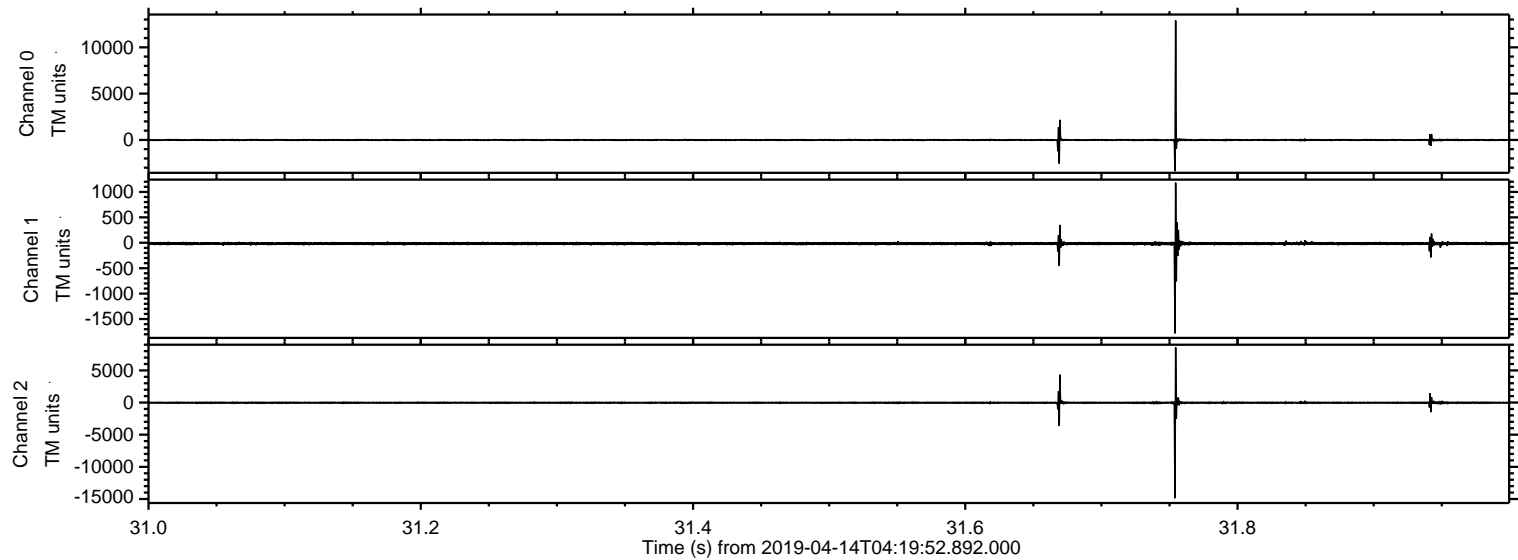
ELMAVAN 3D WAVEFORMS (Measured data sampled at 50 kHz) 51000 packets of 144 samples from 2019-04-14T04:19:52.892.000. Part 36/147

Processed Sun Apr 14 06:27:35 2019 by ELM ver.2012-10-06 from 001__elm20190414_041951__dat00.bin

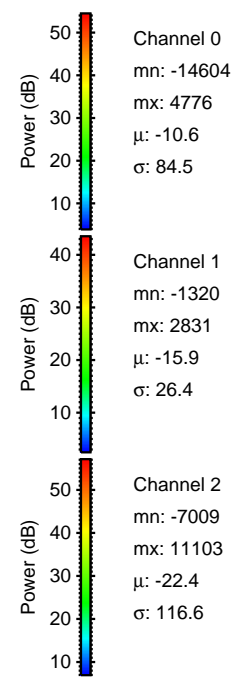
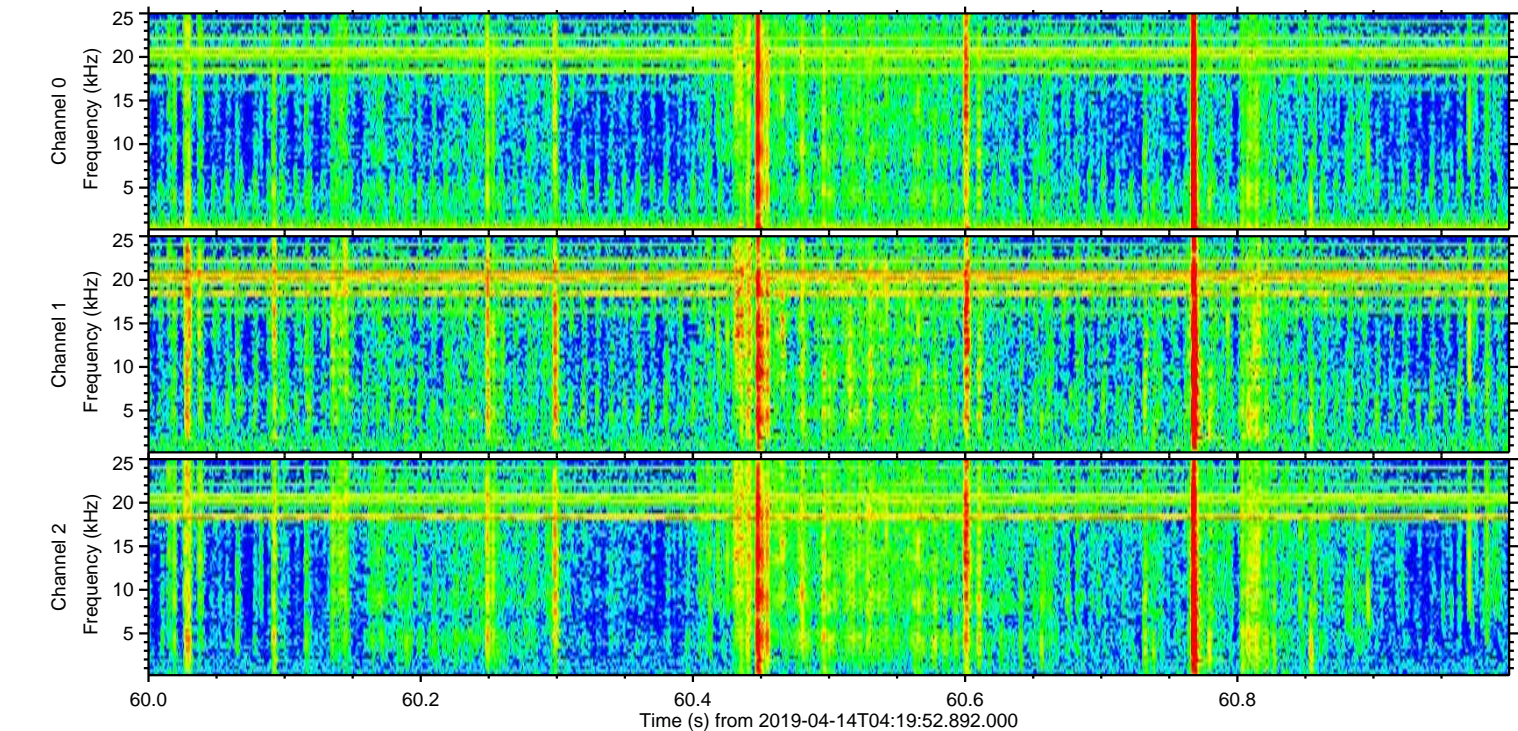
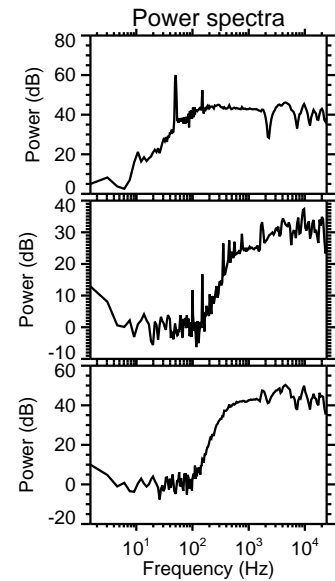
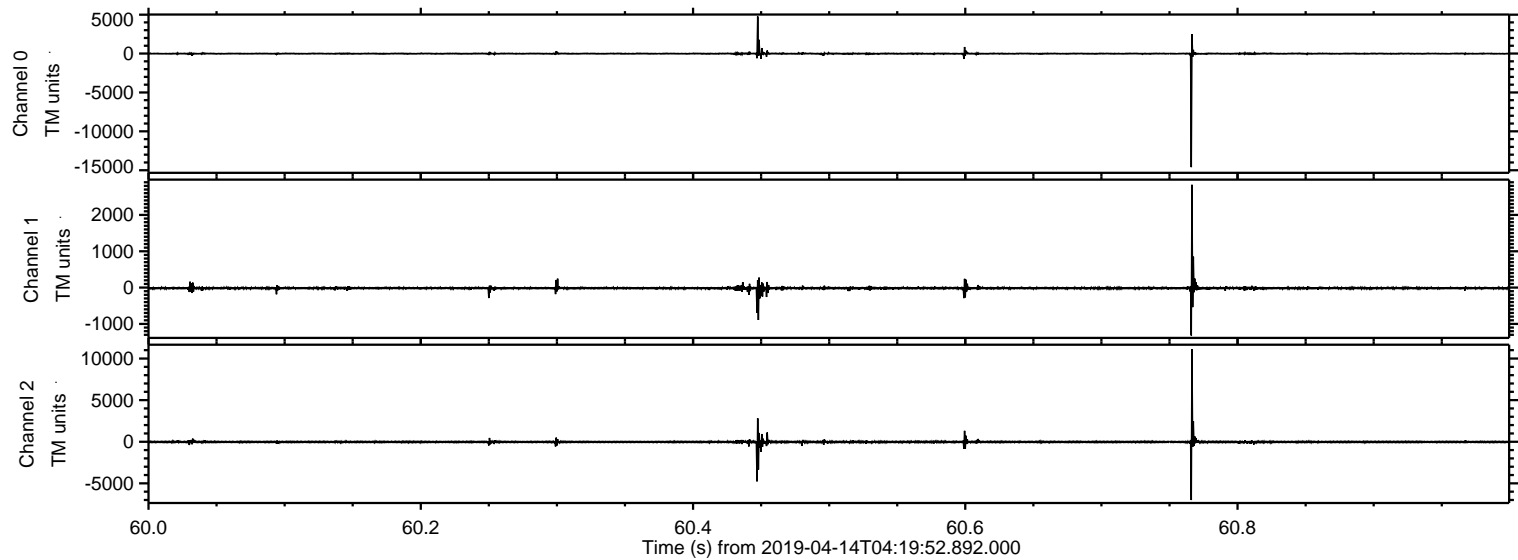


ELMAVAN 3D WAVEFORMS (Measured data sampled at 50 kHz) 51000 packets of 144 samples from 2019-04-14T04:19:52.892.000. Part 32/147

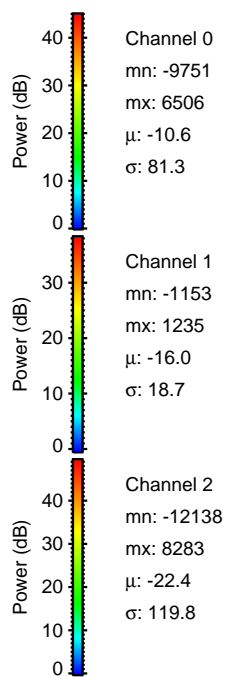
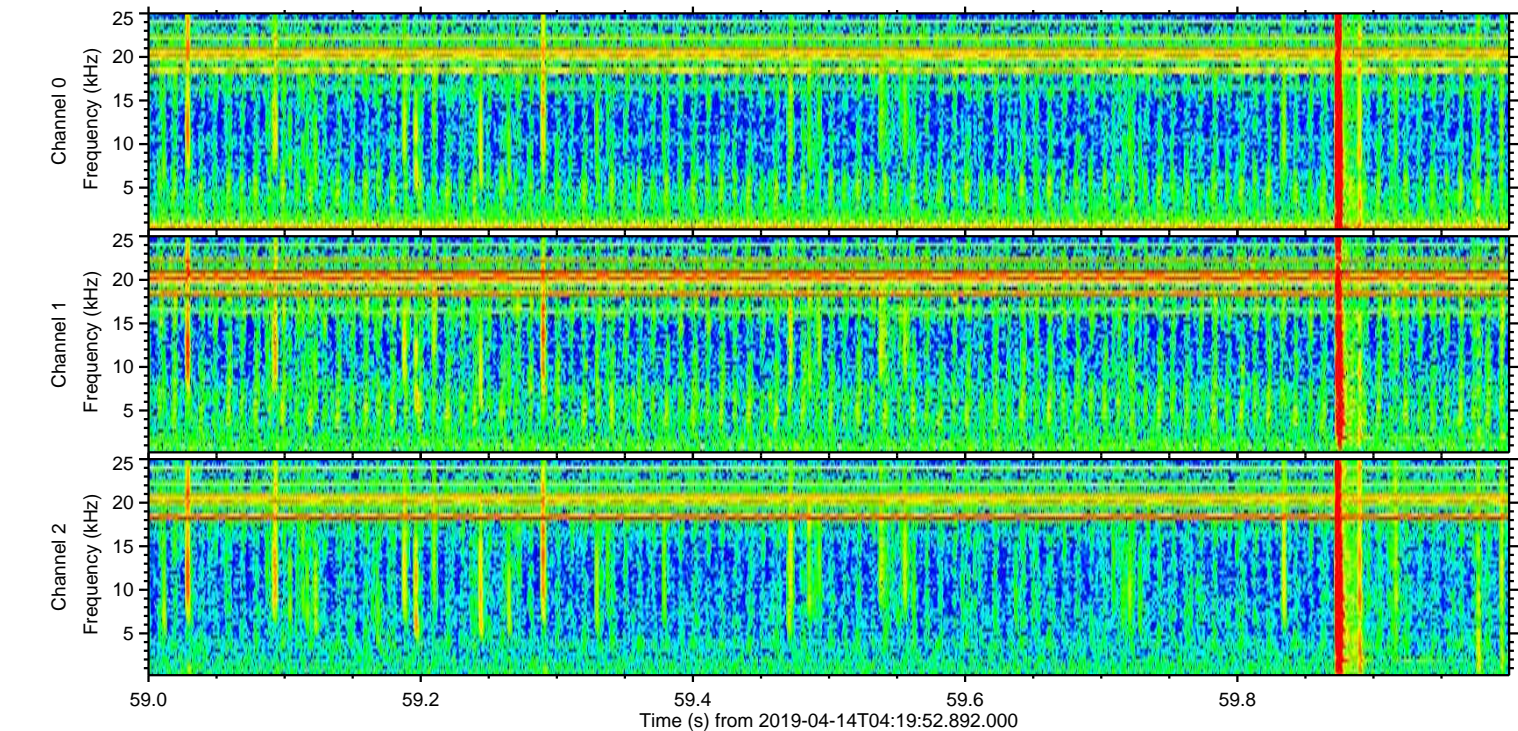
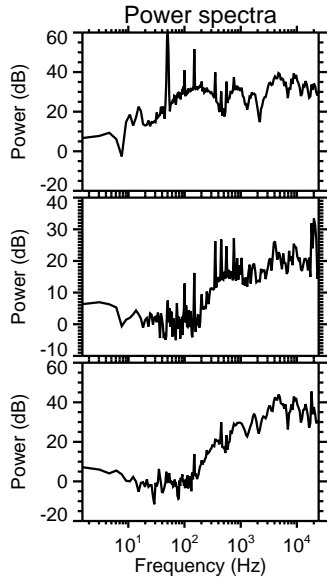
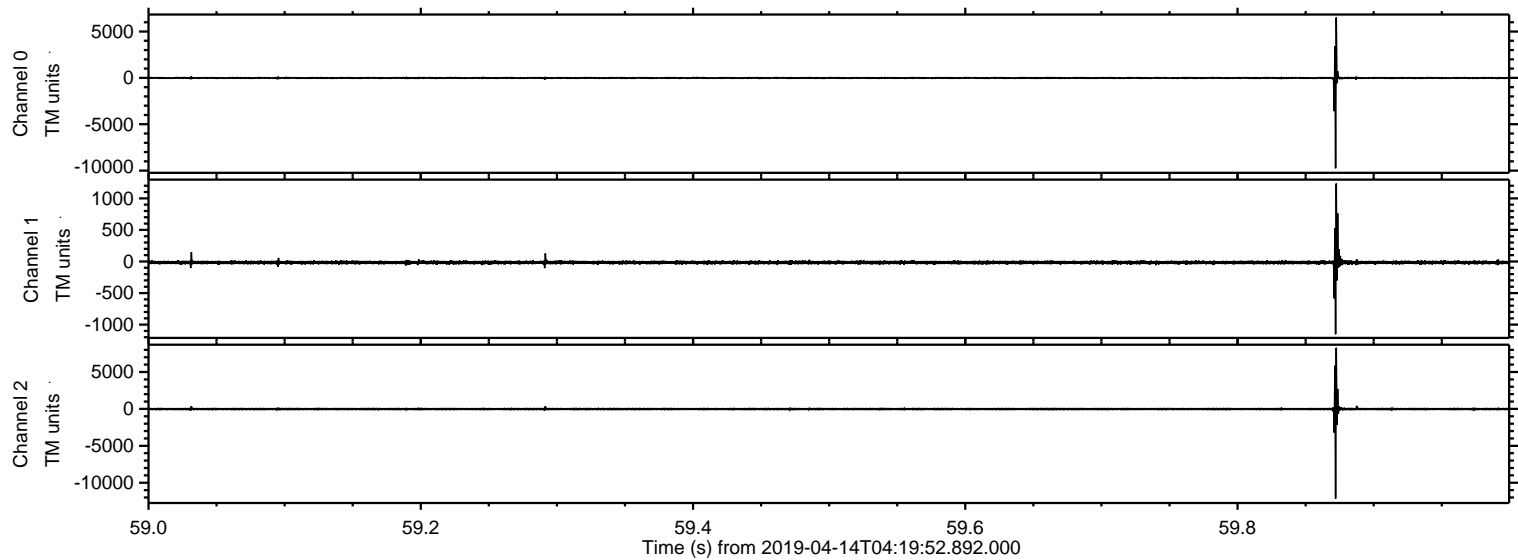
Processed Sun Apr 14 06:27:35 2019 by ELM ver.2012-10-06 from 001__elm20190414_041951__dat00.bin



Processed Sun Apr 14 06:27:36 2019 by ELM ver.2012-10-06 from 001__elm20190414_041951__dat00.bin

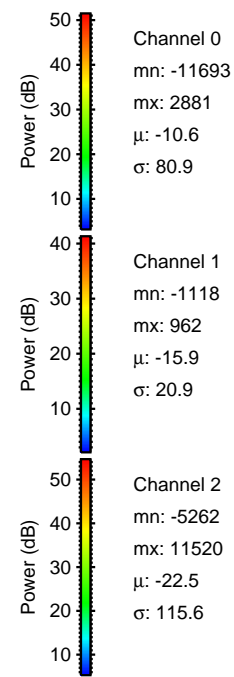
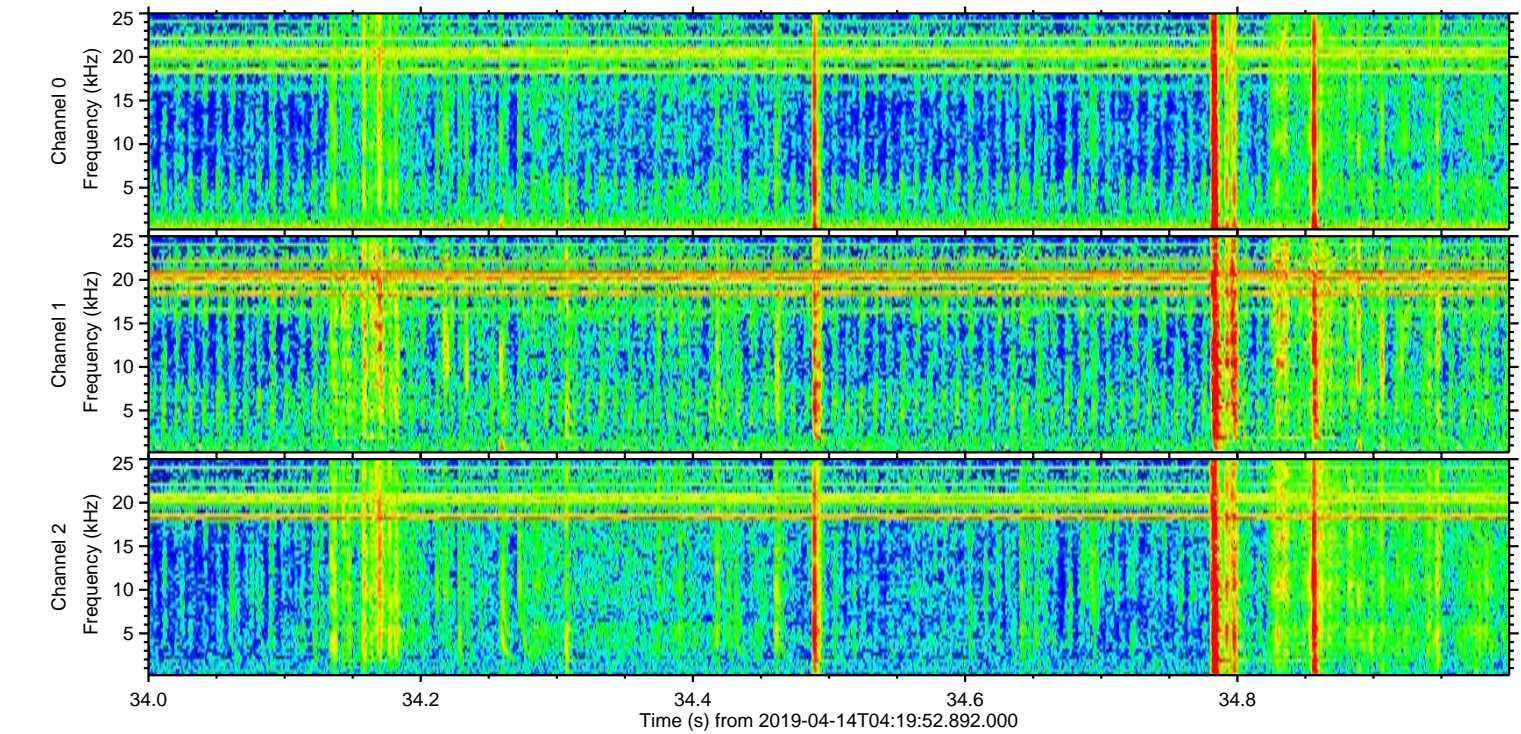
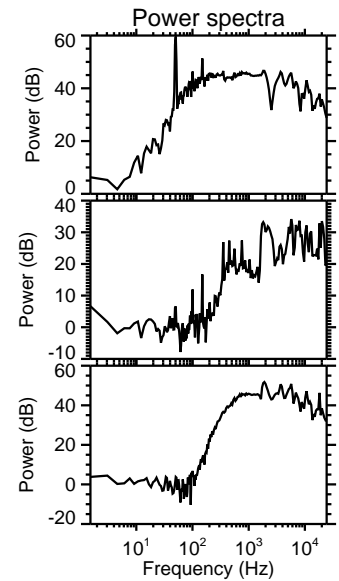
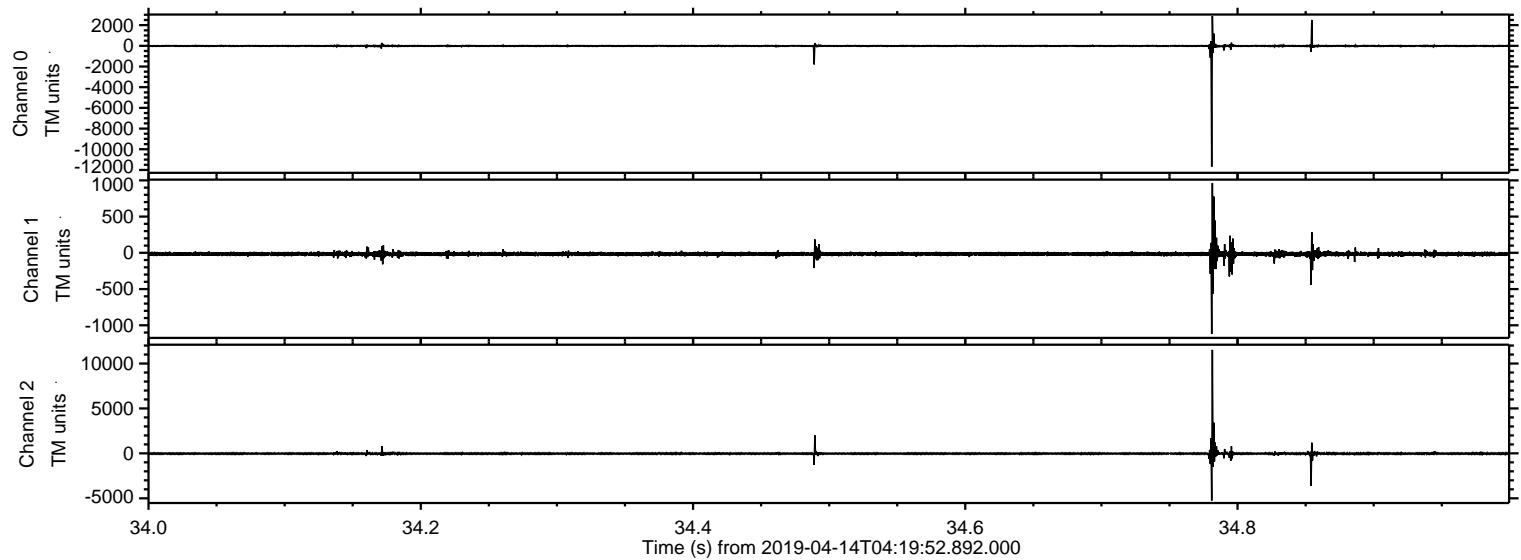


Processed Sun Apr 14 06:27:37 2019 by ELM ver.2012-10-06 from 001__elm20190414_041951__dat00.bin

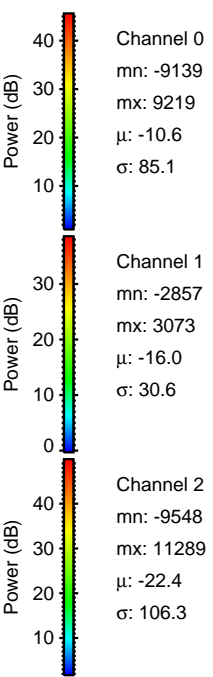
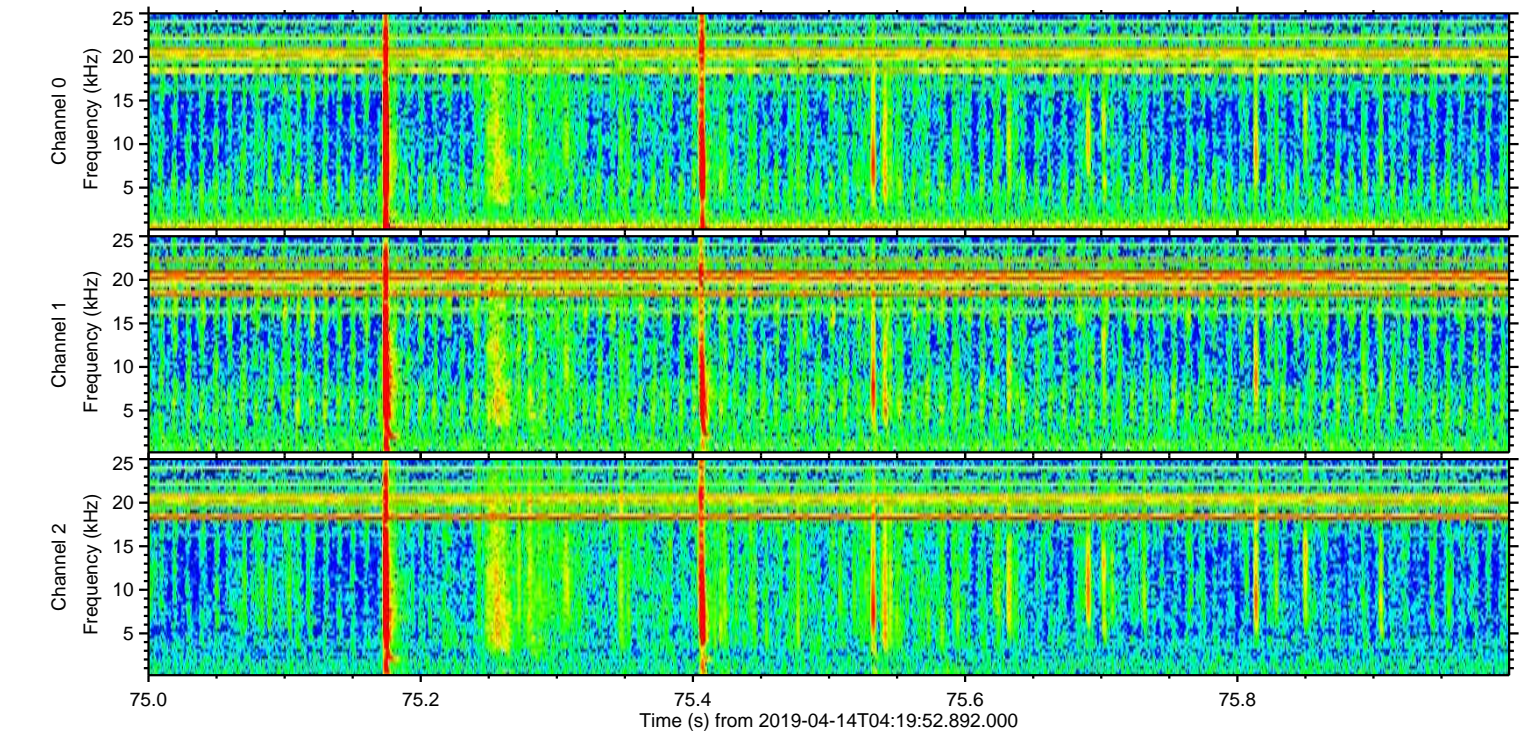
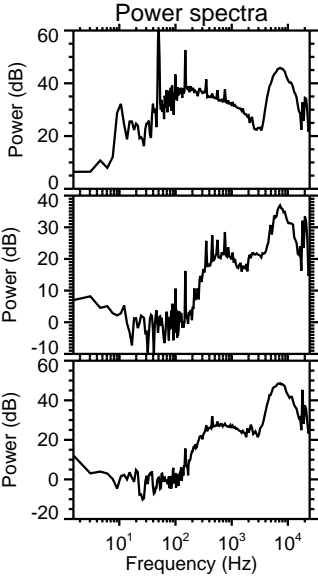
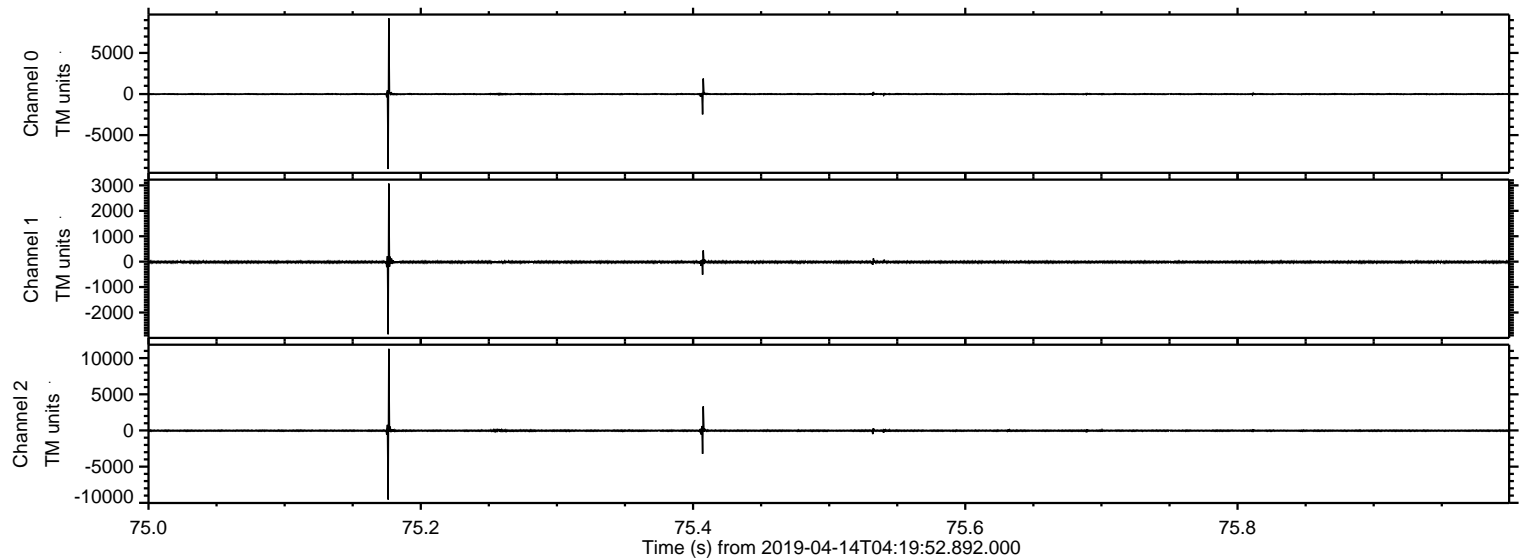


ELMAVAN 3D WAVEFORMS (Measured data sampled at 50 kHz) 51000 packets of 144 samples from 2019-04-14T04:19:52.892.000. Part 35/147

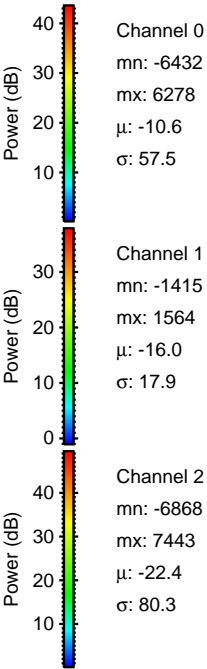
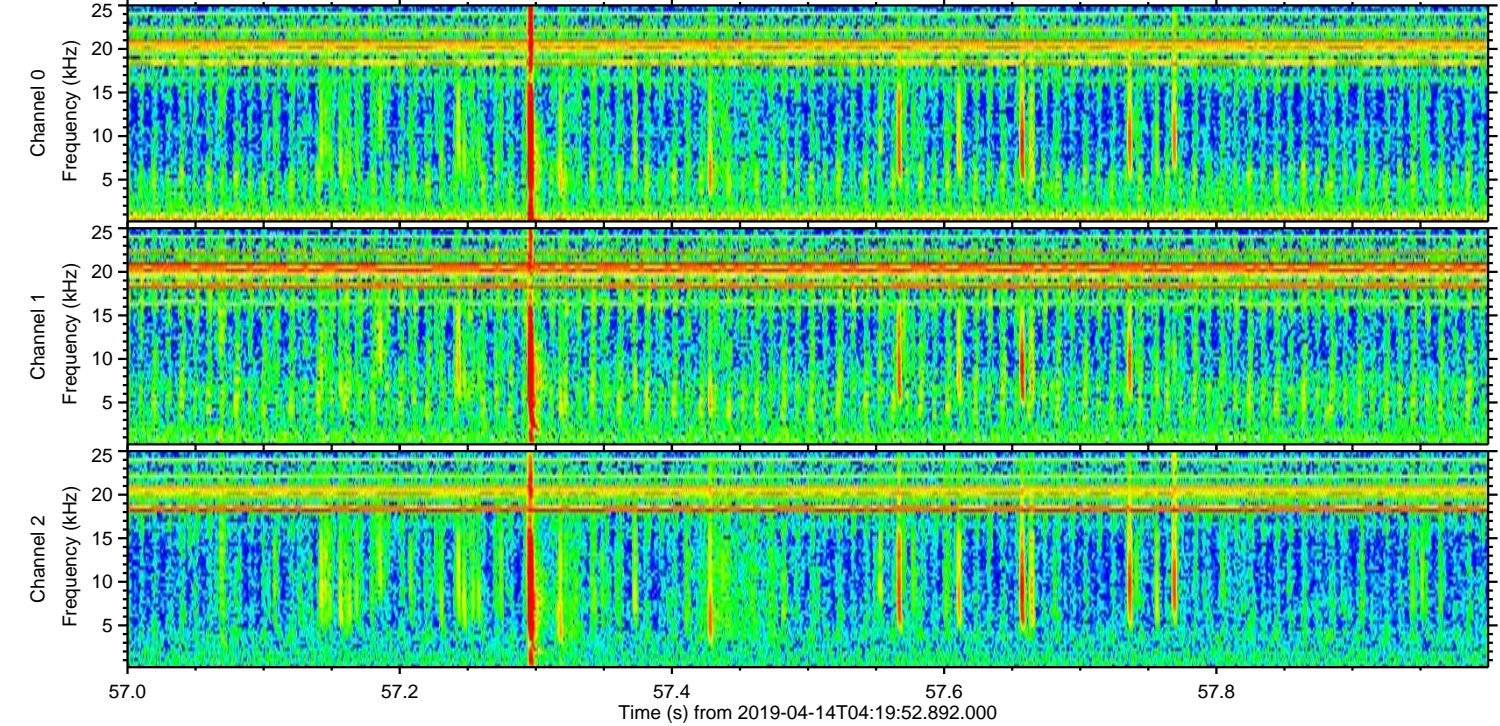
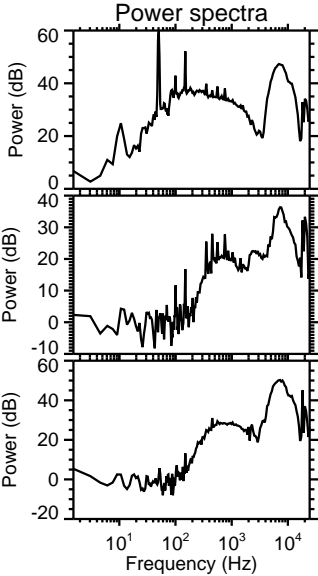
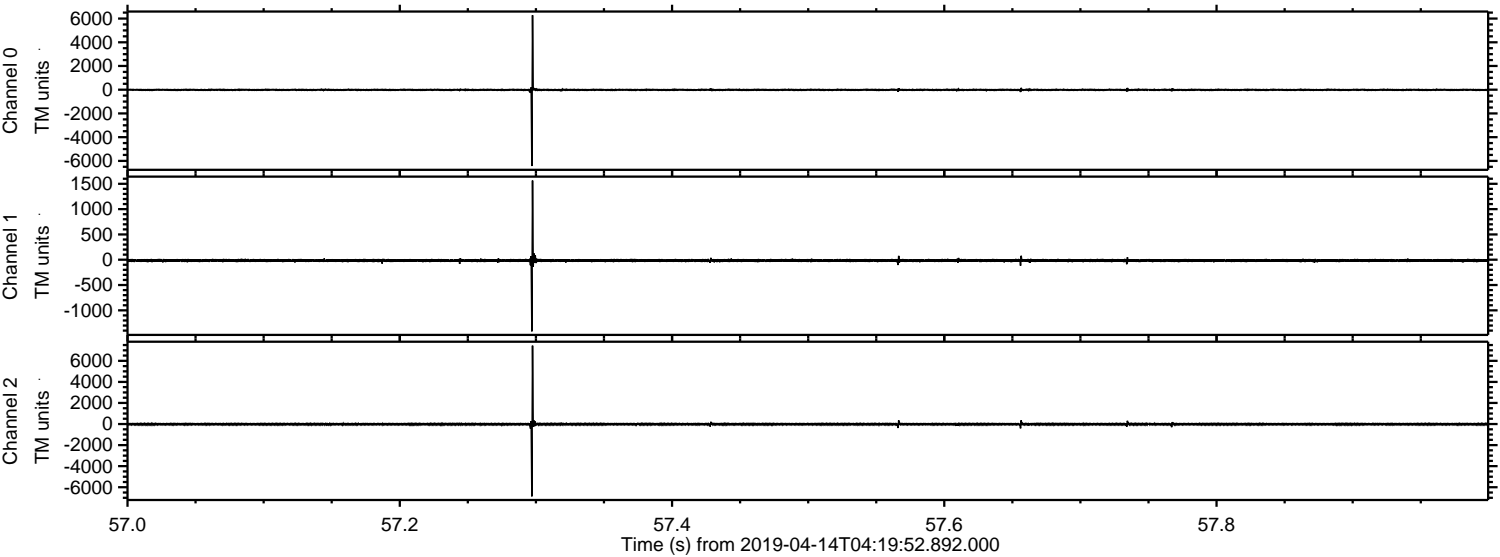
Processed Sun Apr 14 06:27:37 2019 by ELM ver.2012-10-06 from 001__elm20190414_041951__dat00.bin



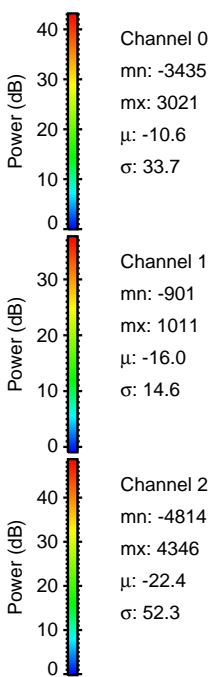
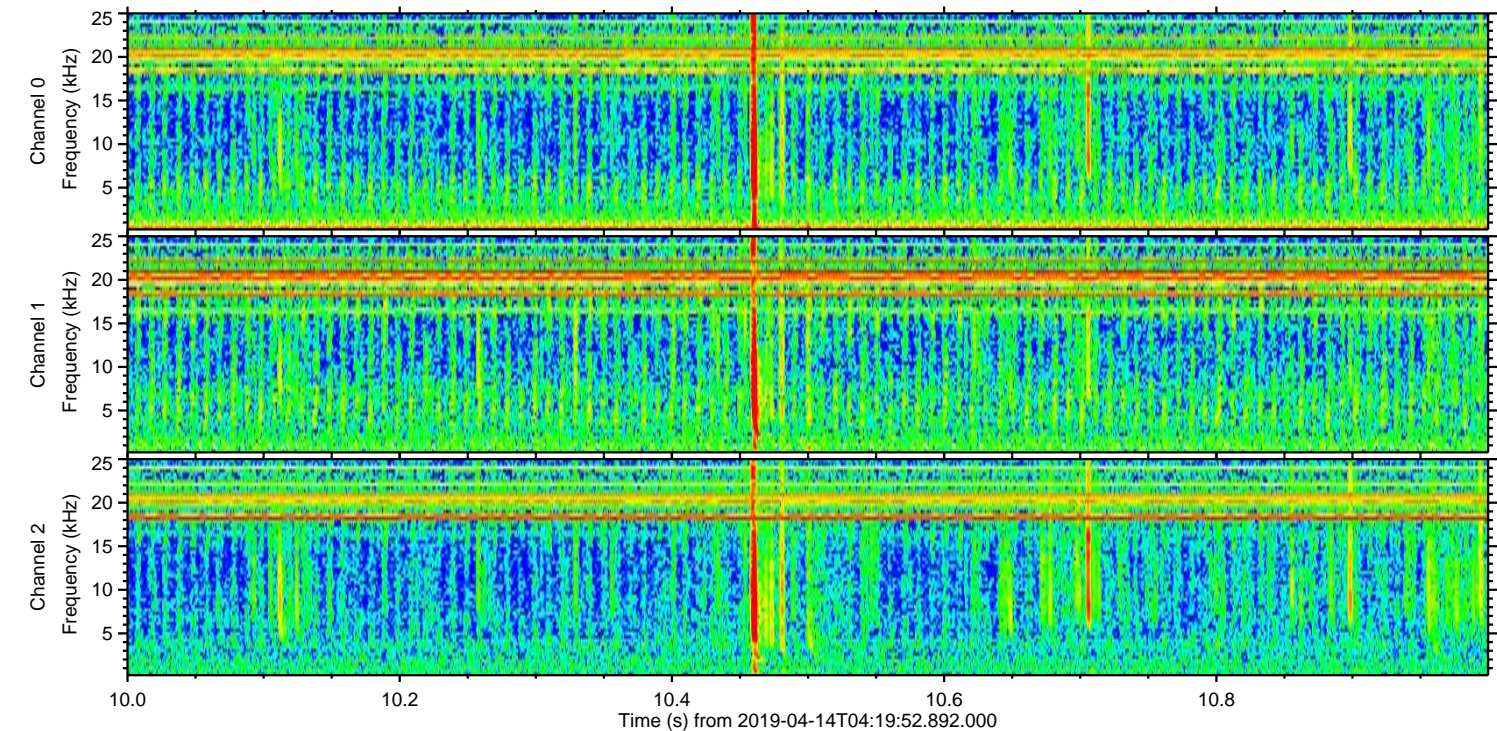
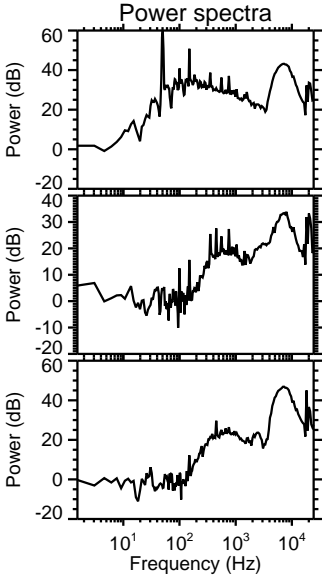
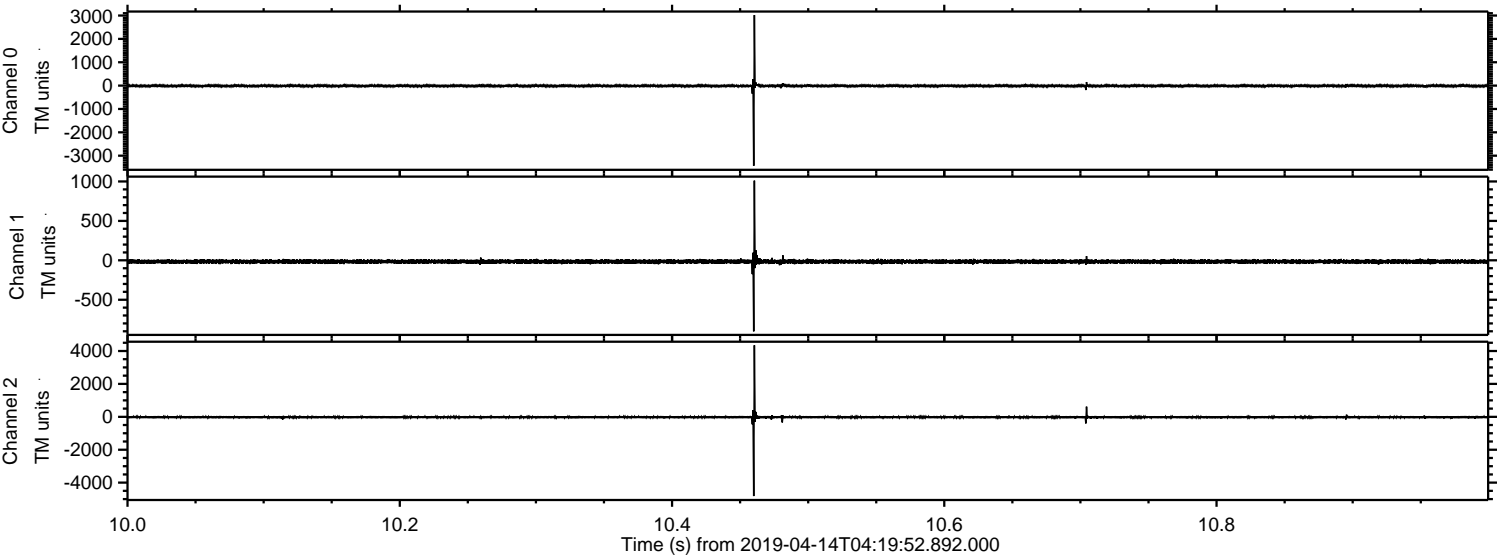
Processed Sun Apr 14 06:27:38 2019 by ELM ver.2012-10-06 from 001__elm20190414_041951__dat00.bin



Processed Sun Apr 14 06:27:38 2019 by ELM ver.2012-10-06 from 001__elm20190414_041951__dat00.bin



Processed Sun Apr 14 06:27:39 2019 by ELM ver.2012-10-06 from 001__elm20190414_041951__dat00.bin



Channel 0
mn: -3435
mx: 3021
 μ : -10.6
 σ : 33.7

Channel 1
mn: -901
mx: 1011
 μ : -16.0
 σ : 14.6

Channel 2
mn: -4814
mx: 4346
 μ : -22.4
 σ : 52.3

Processed Sun Apr 14 06:27:40 2019 by ELM ver.2012-10-06 from 001__elm20190414_041951__dat00.bin

