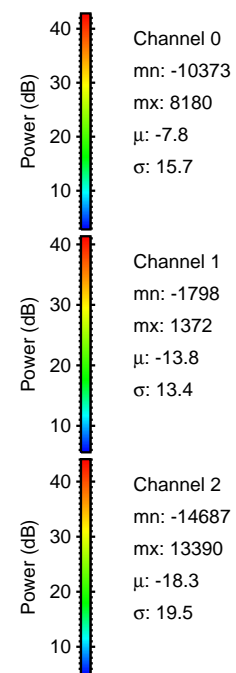
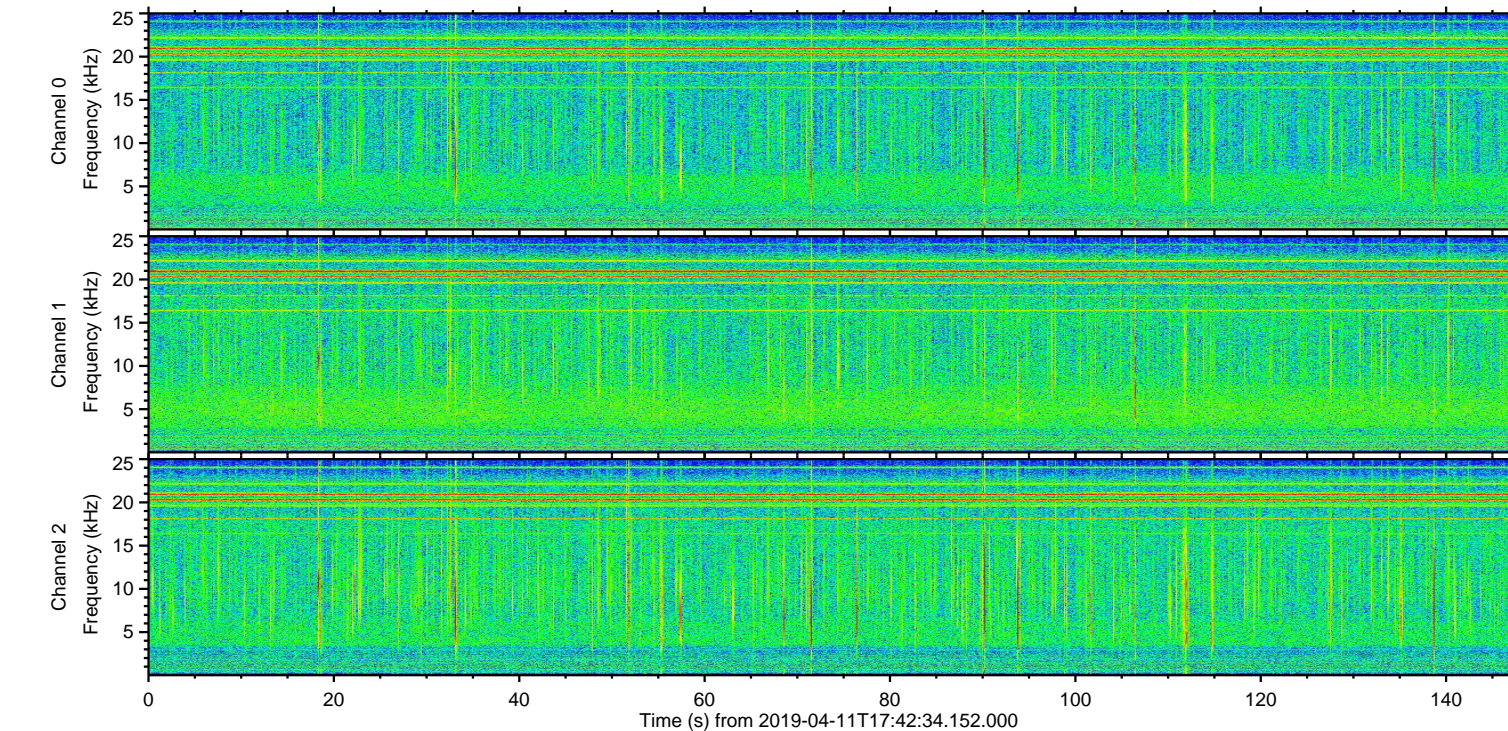
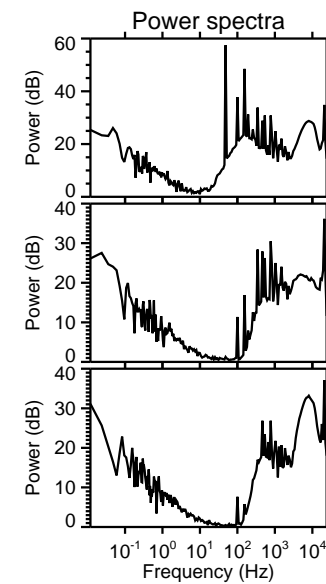
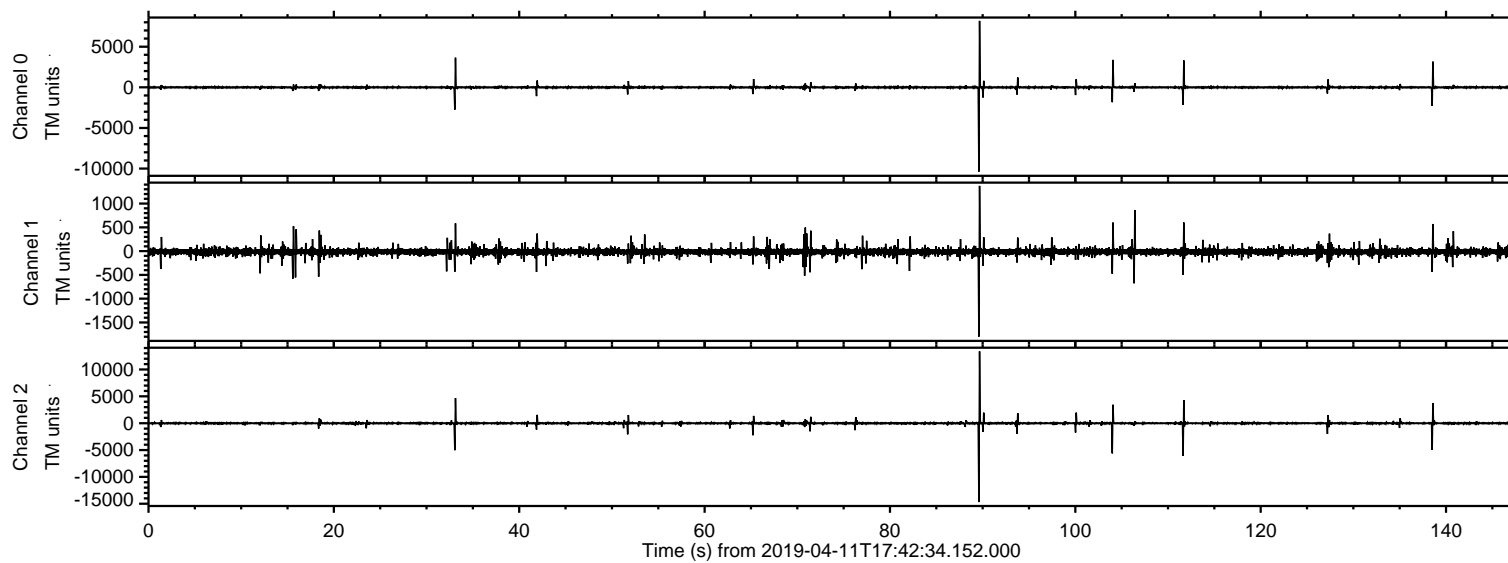
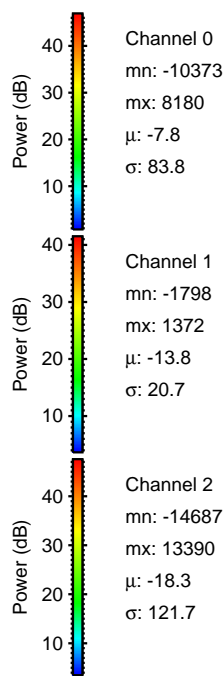
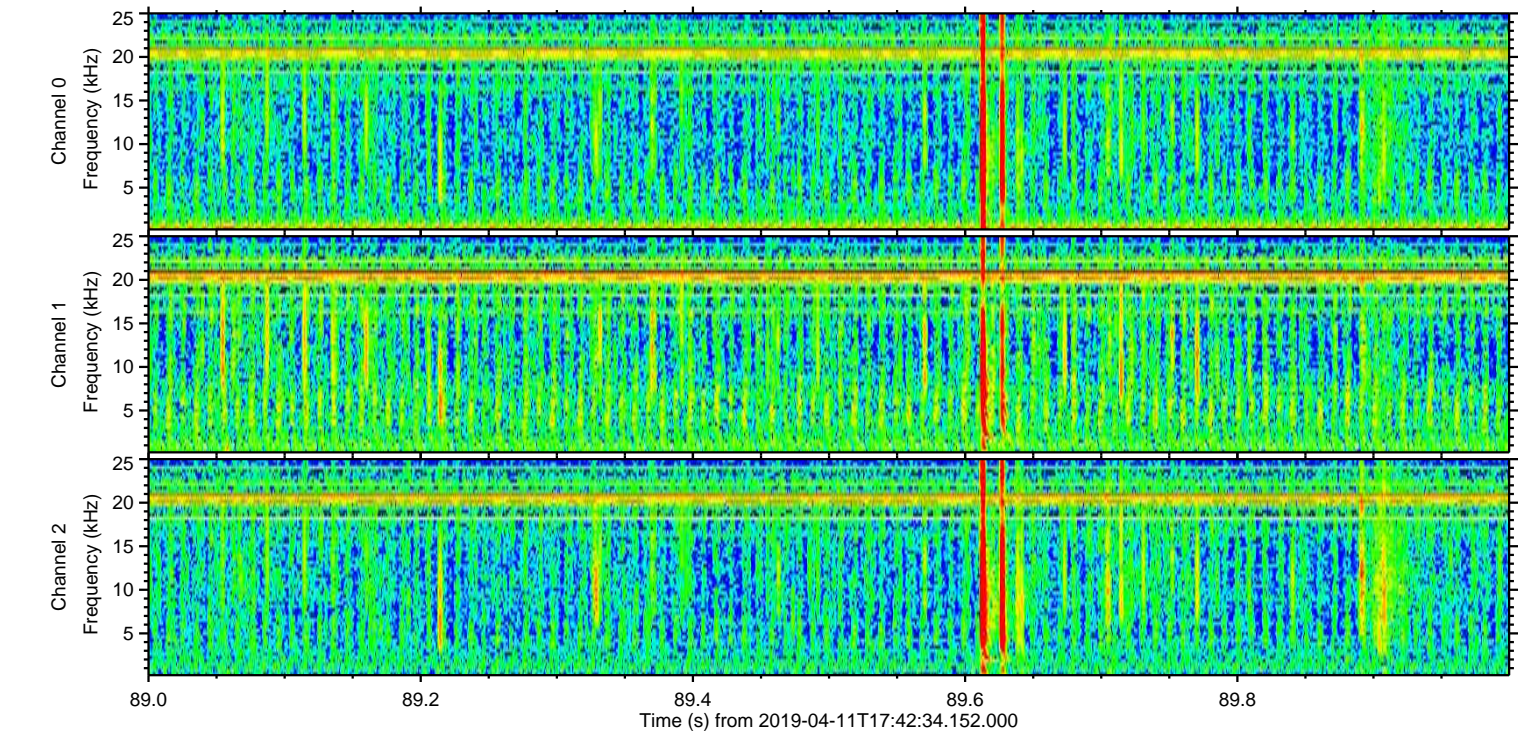
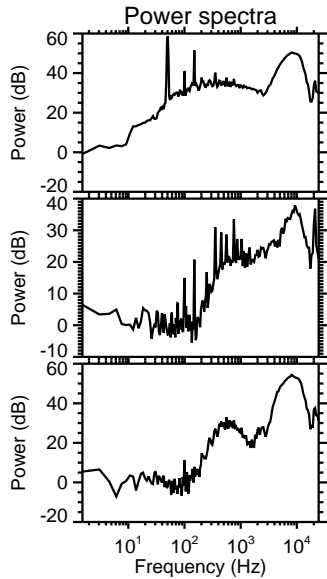
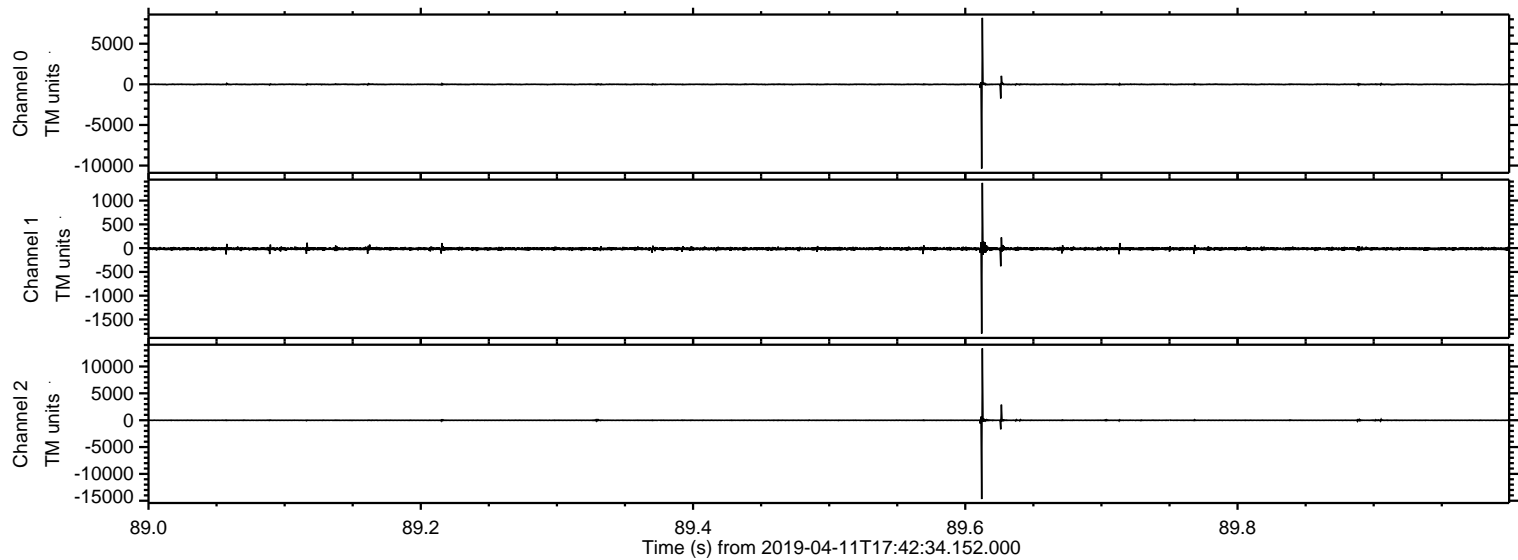


ELMAVAN 3D WAVEFORMS (Measured data sampled at 50 kHz) 51000 packets of 144 samples from 2019-04-11T17:42:34.152.000.

Processed Thu Apr 11 19:50:37 2019 by ELM ver.2012-10-06 from 001__elm20190411_174233__dat00.bin

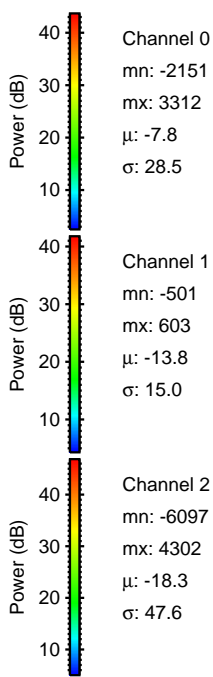
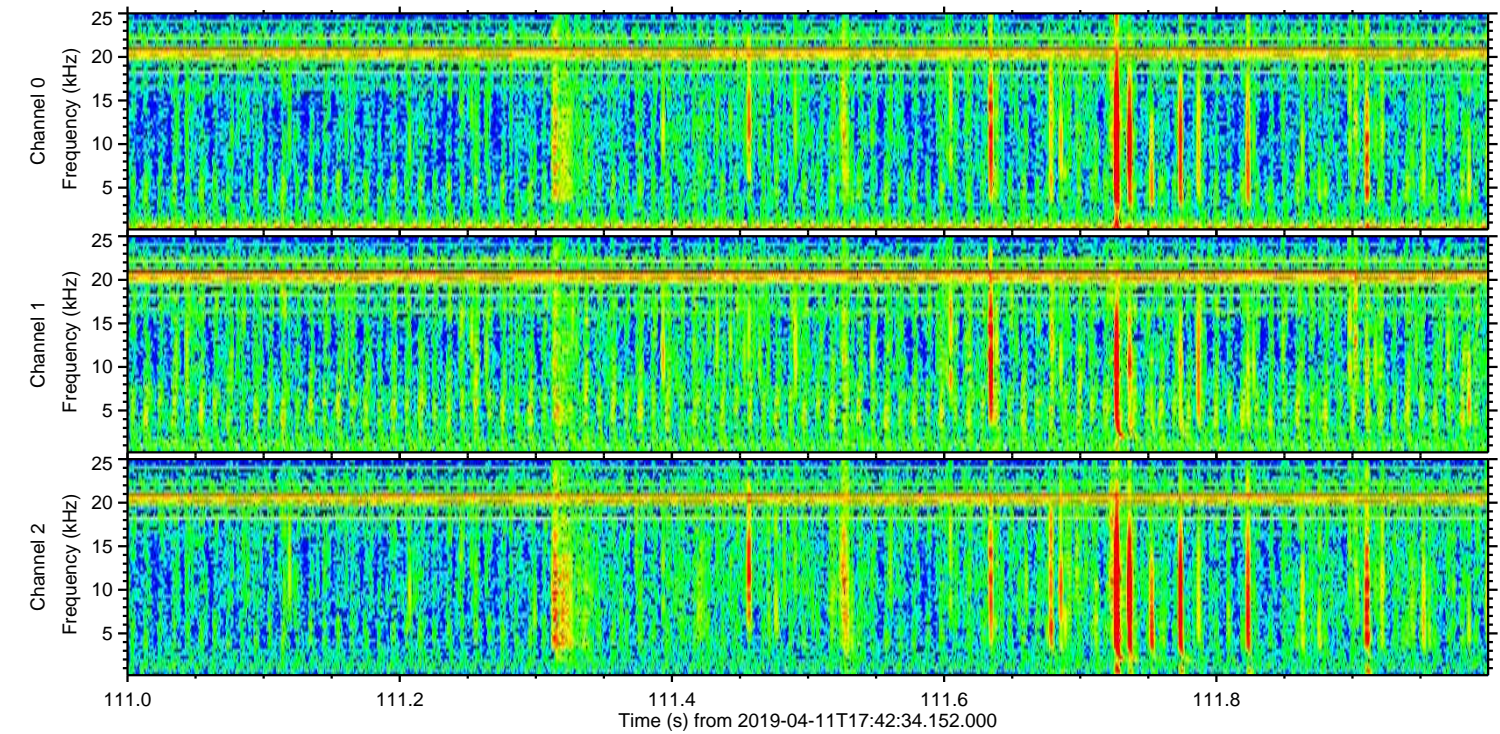
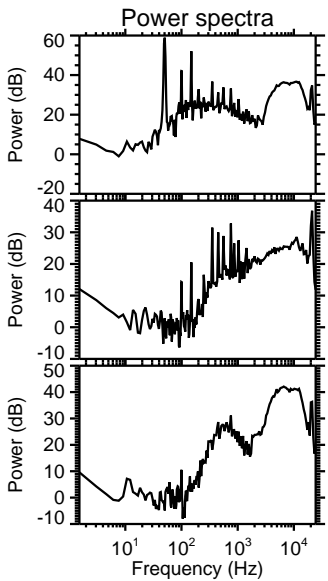
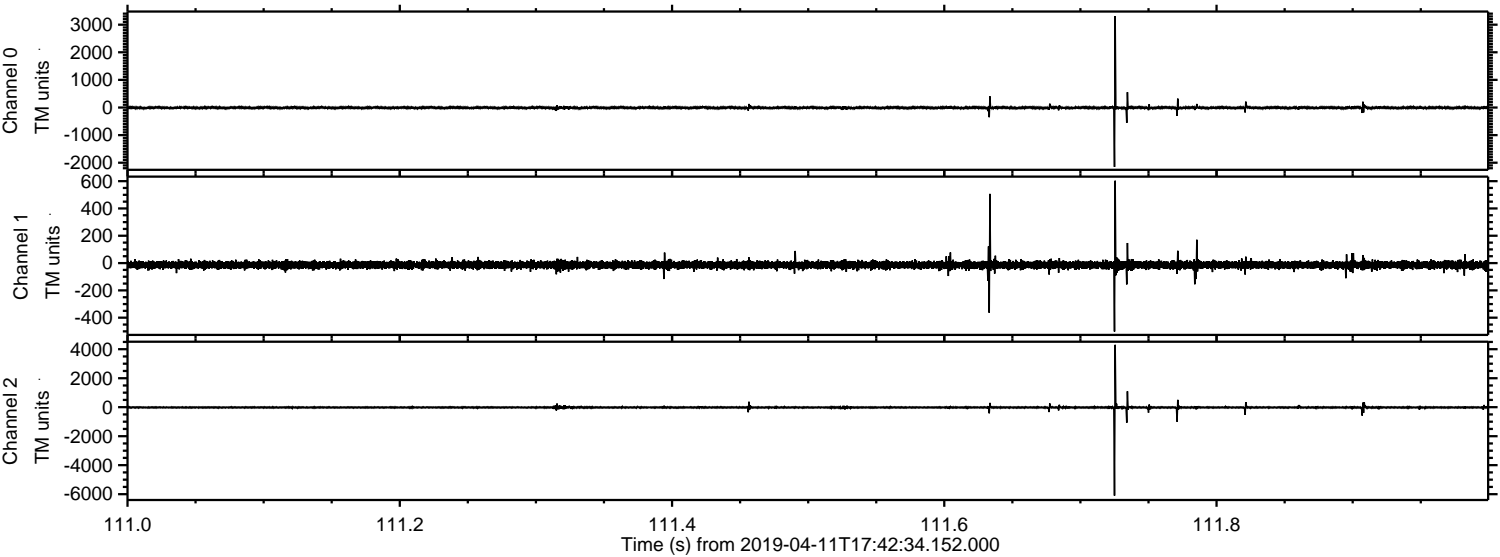


Processed Thu Apr 11 19:50:45 2019 by ELM ver.2012-10-06 from 001__elm20190411_174233__dat00.bin



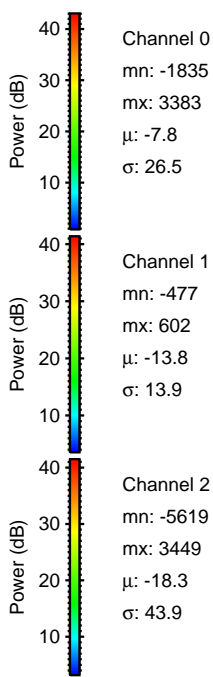
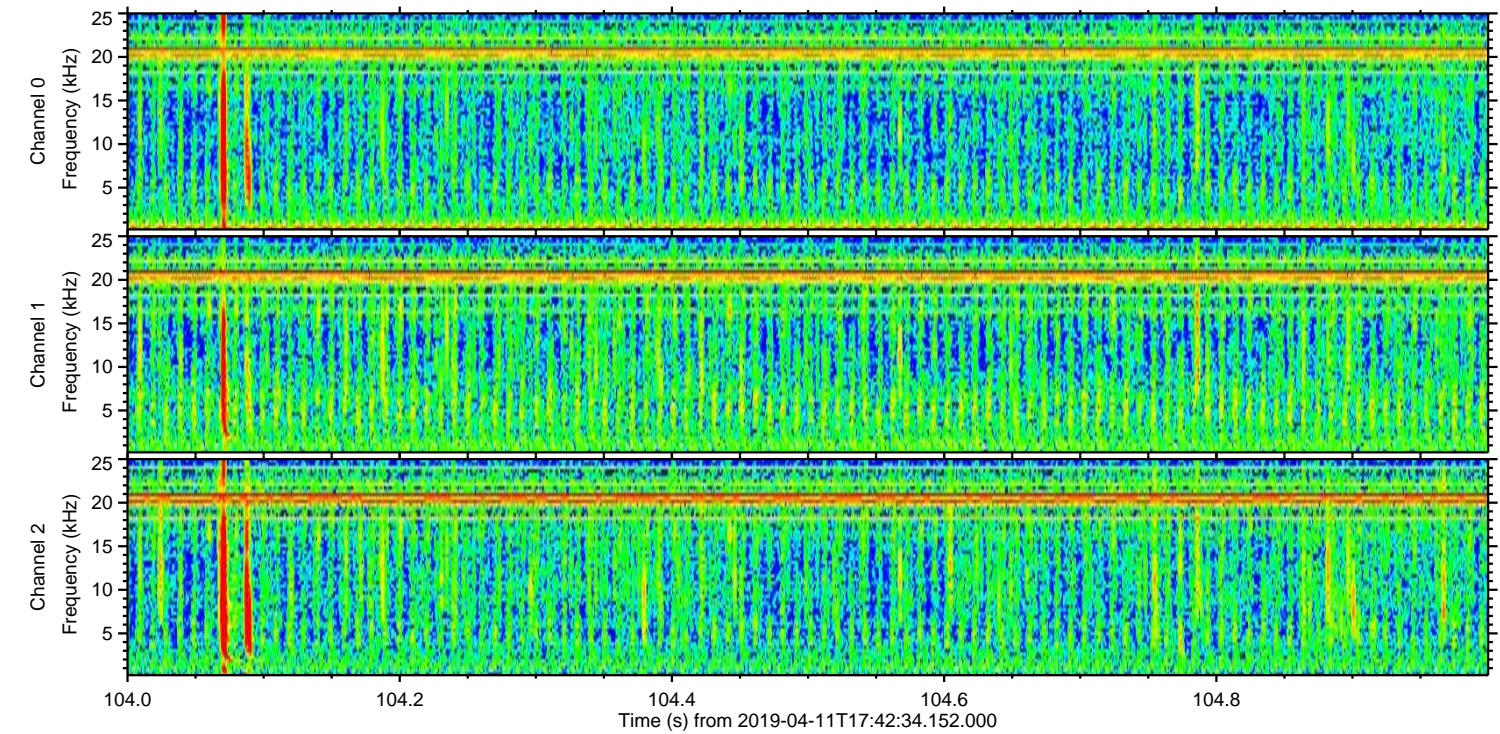
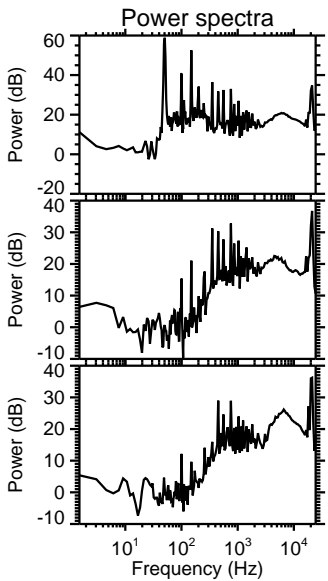
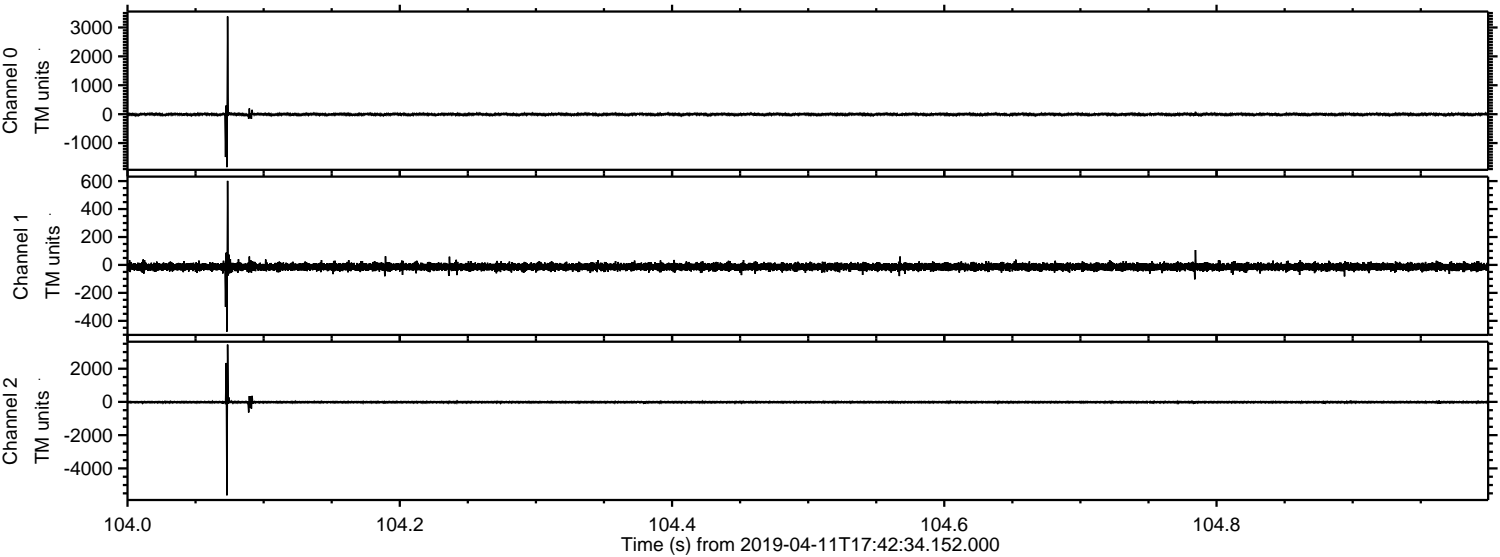
ELMAVAN 3D WAVEFORMS (Measured data sampled at 50 kHz) 51000 packets of 144 samples from 2019-04-11T17:42:34.152.000. Part 112/147

Processed Thu Apr 11 19:50:46 2019 by ELM ver.2012-10-06 from 001__elm20190411_174233__dat00.bin

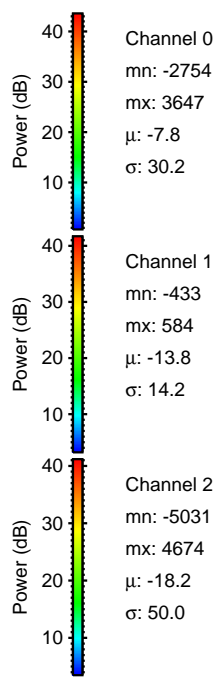
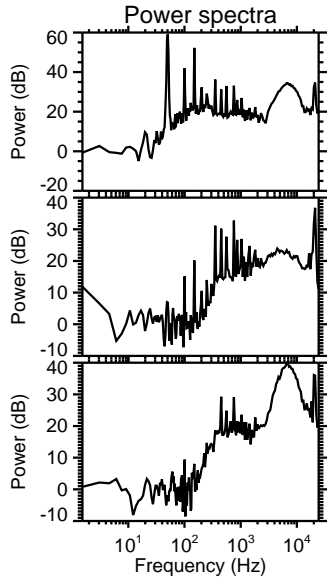
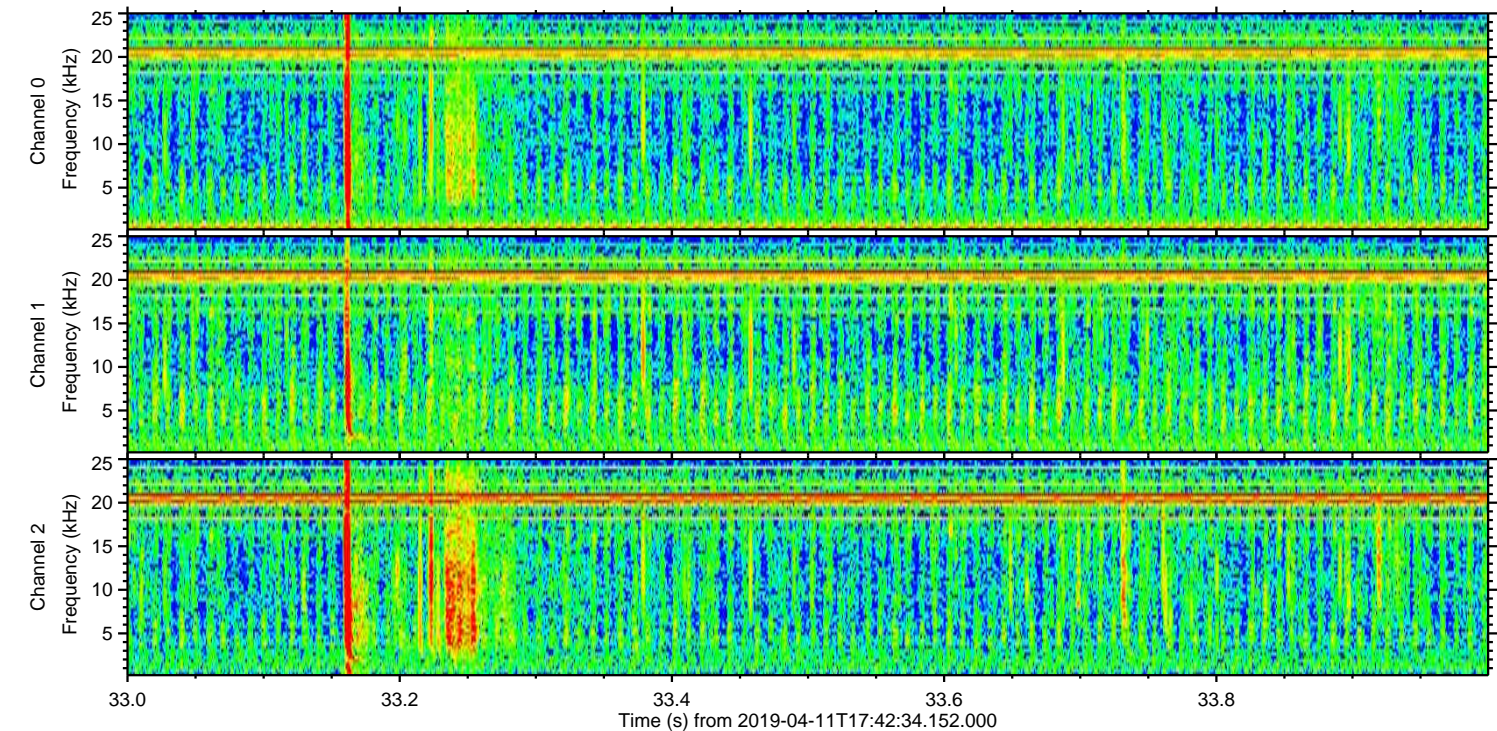
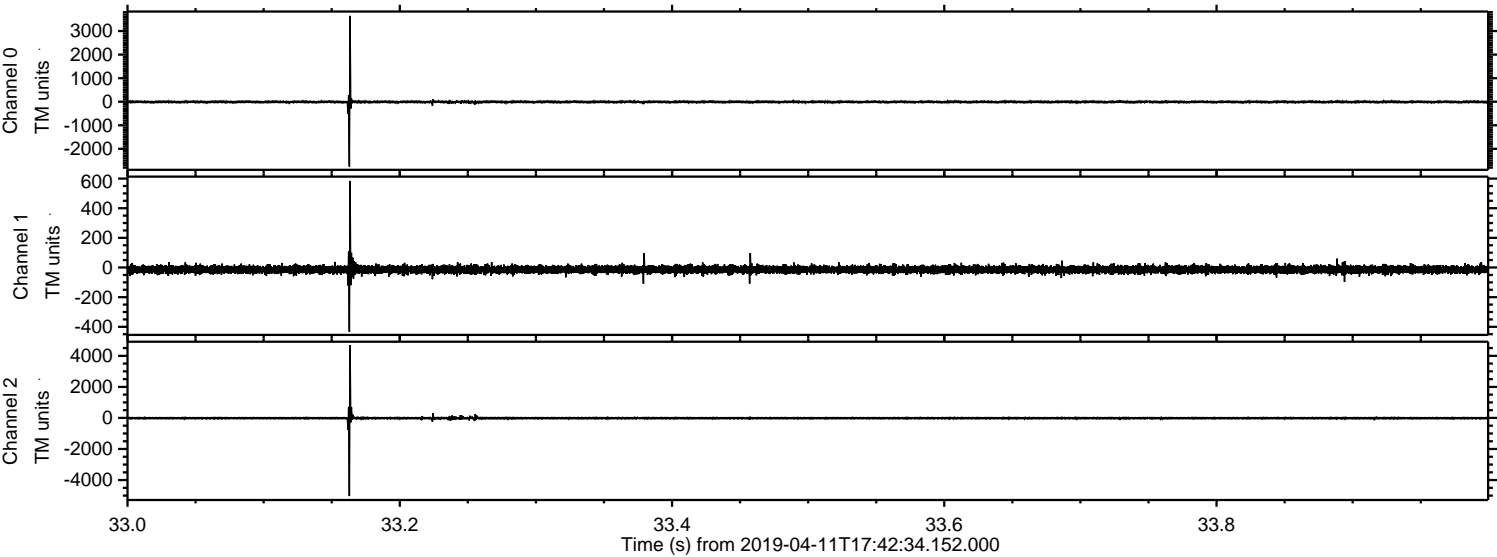


ELMAVAN 3D WAVEFORMS (Measured data sampled at 50 kHz) 51000 packets of 144 samples from 2019-04-11T17:42:34.152.000. Part 105/147

Processed Thu Apr 11 19:50:47 2019 by ELM ver.2012-10-06 from 001__elm20190411_174233__dat00.bin

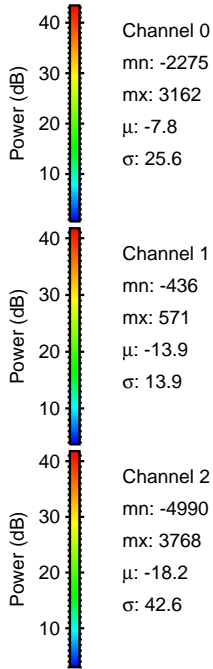
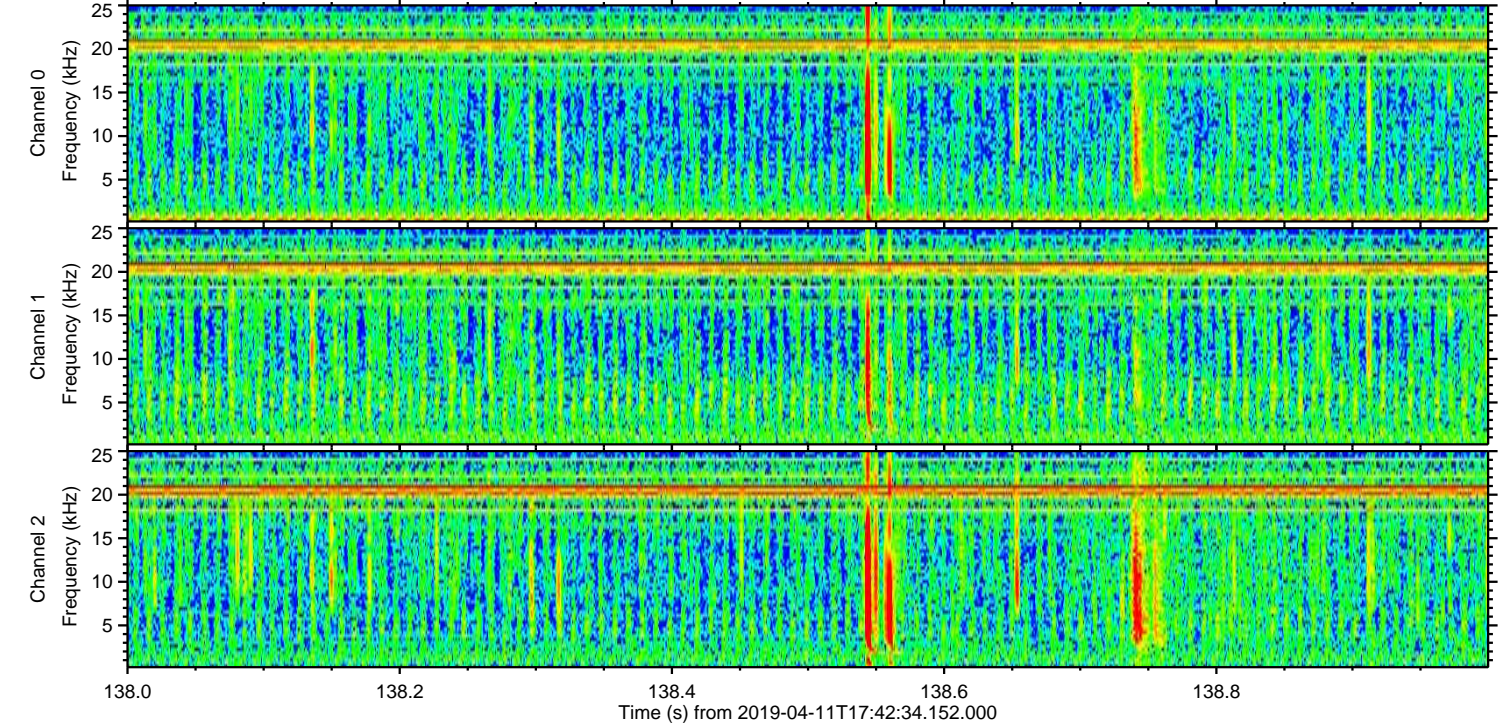
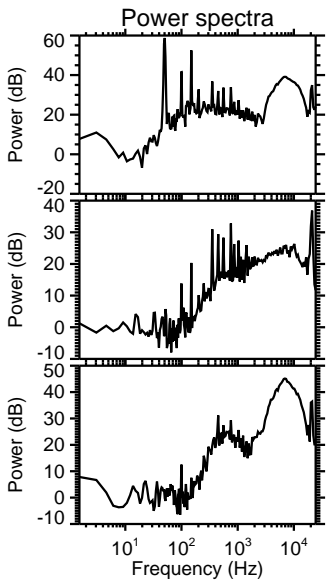
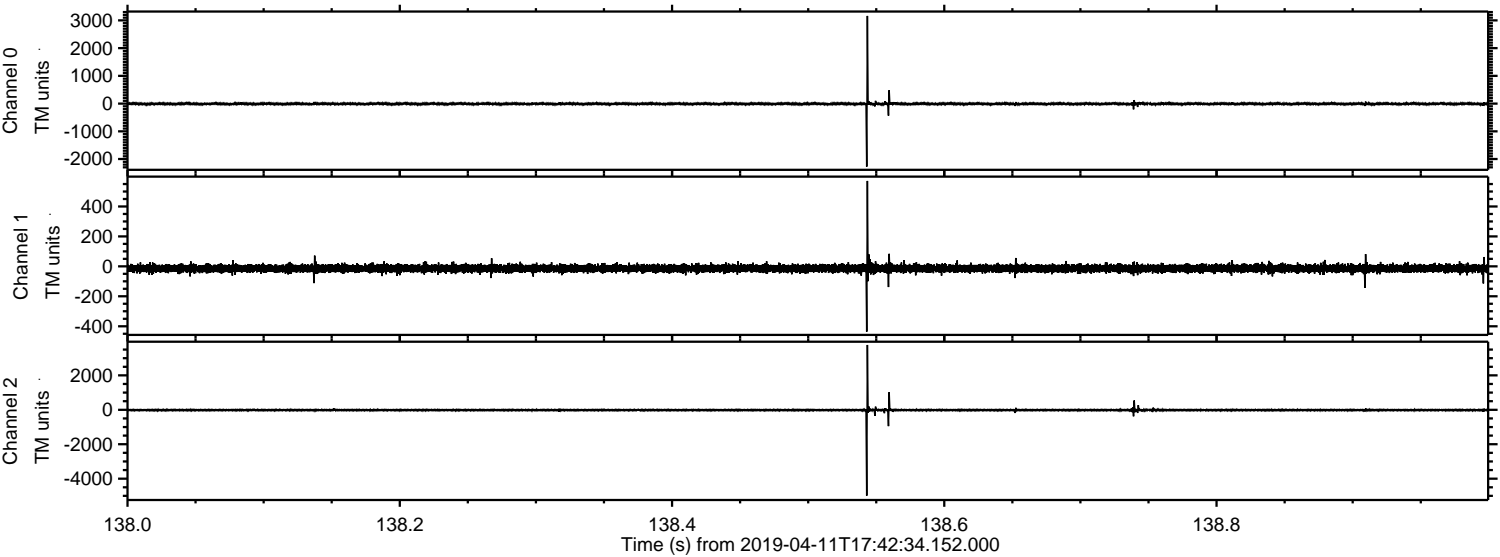


Processed Thu Apr 11 19:50:48 2019 by ELM ver.2012-10-06 from 001__elm20190411_174233__dat00.bin

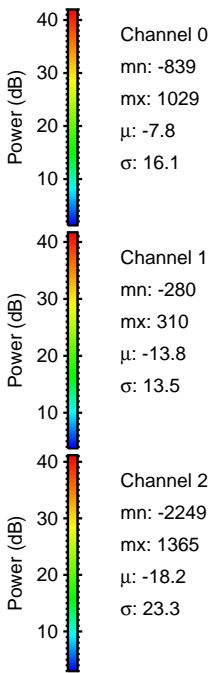
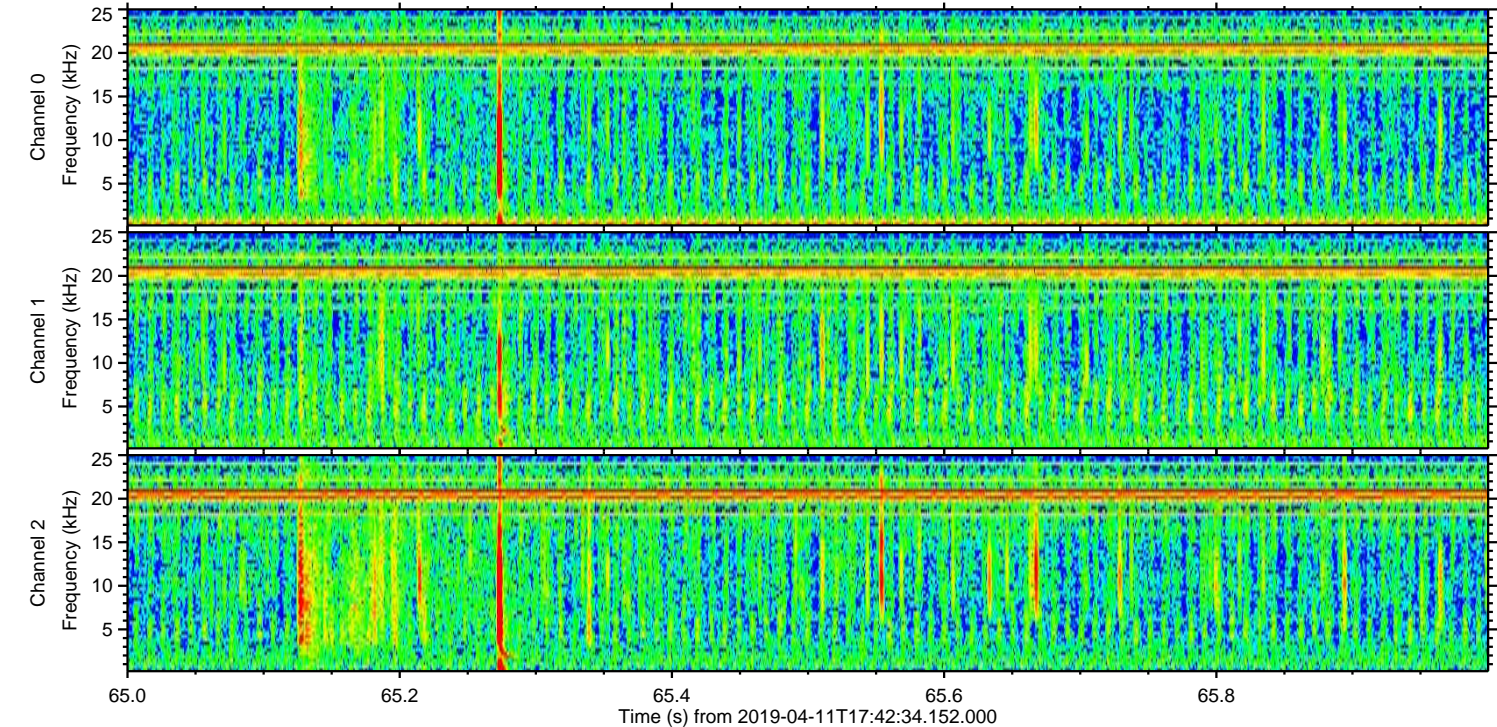
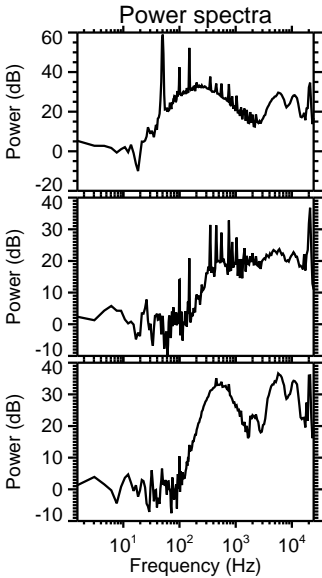
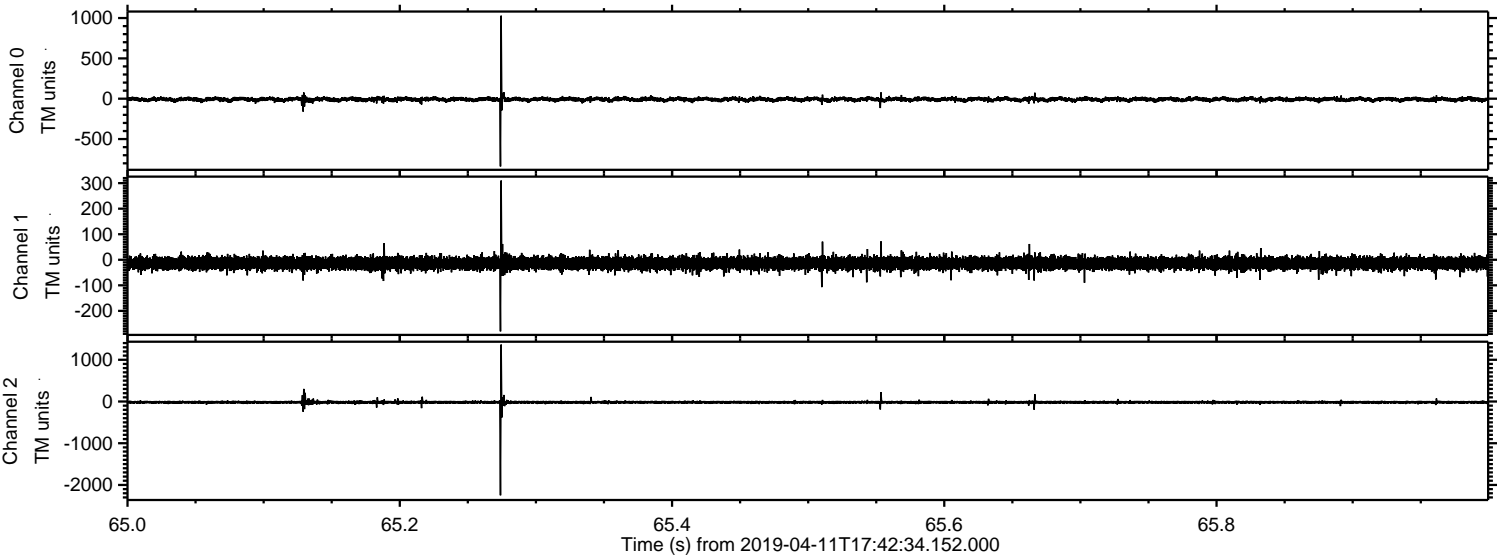


ELMAVAN 3D WAVEFORMS (Measured data sampled at 50 kHz) 51000 packets of 144 samples from 2019-04-11T17:42:34.152.000. Part 139/147

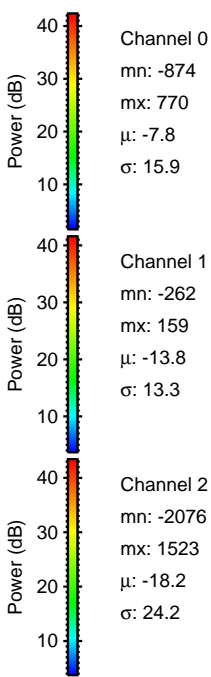
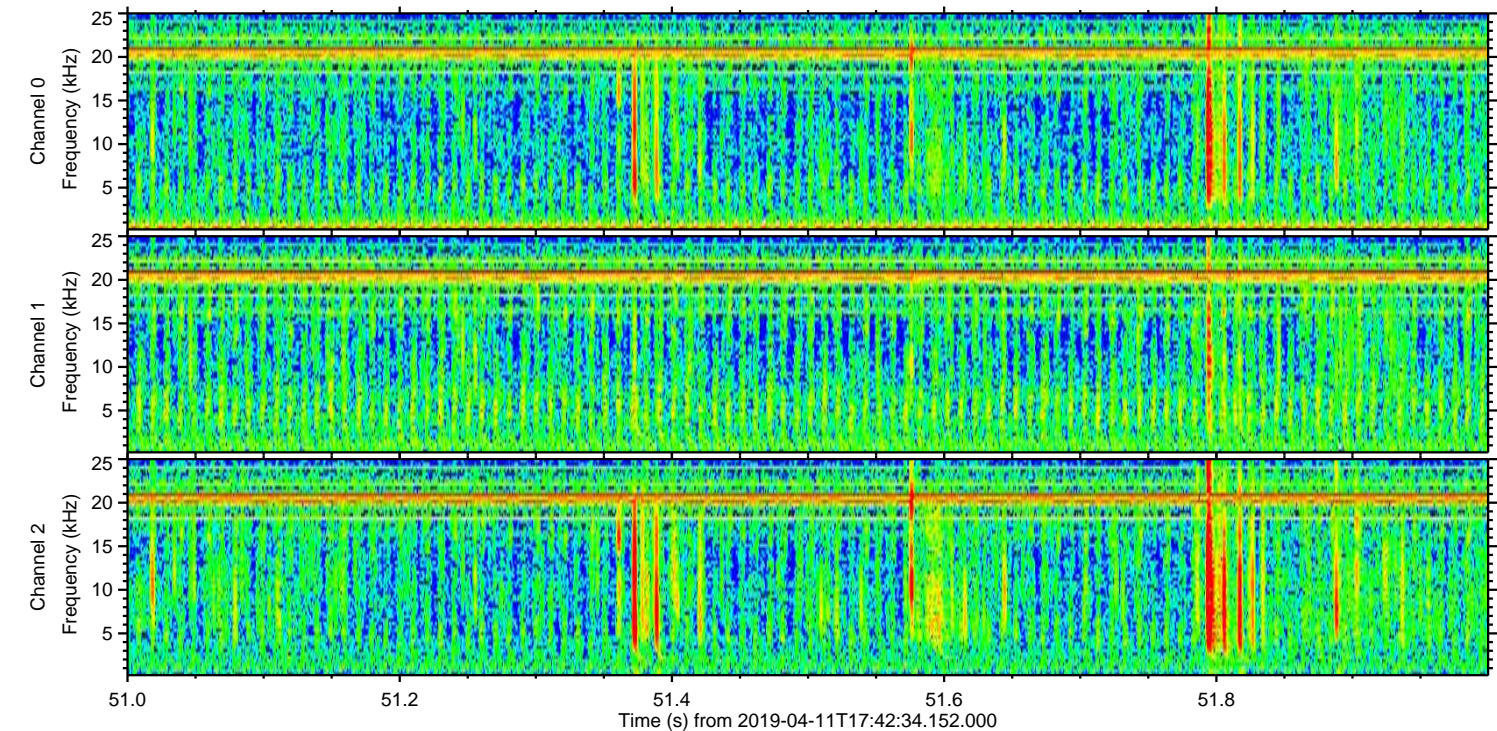
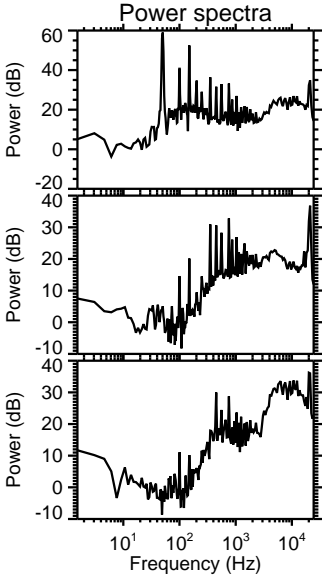
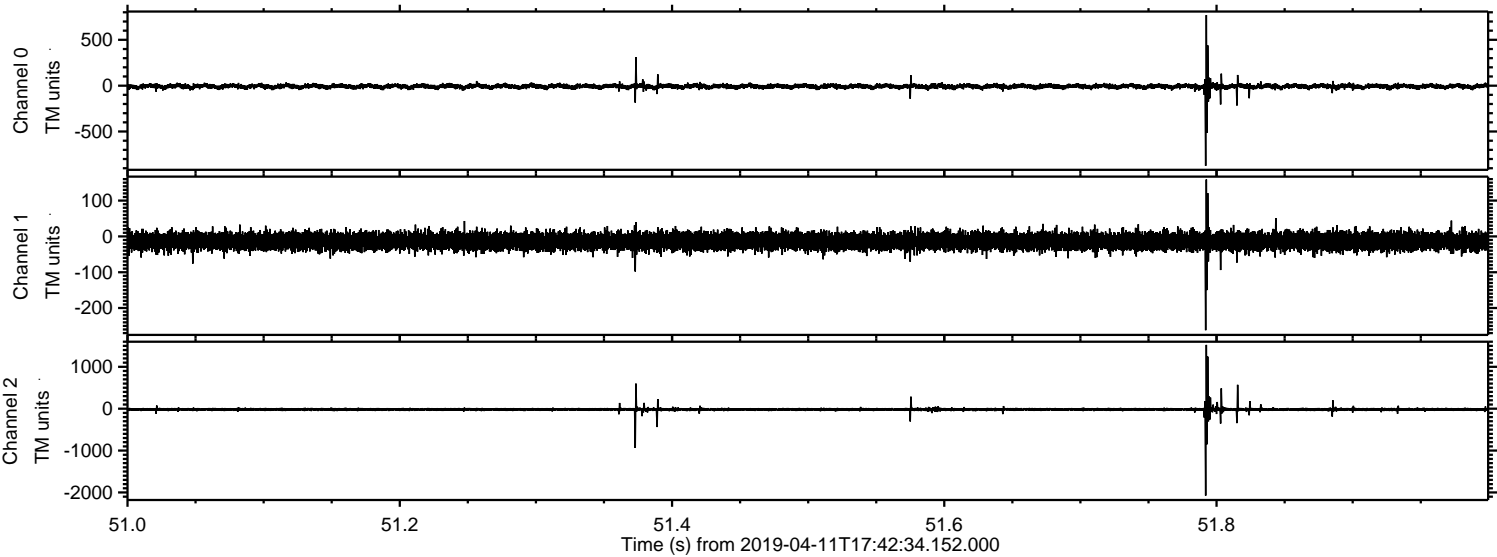
Processed Thu Apr 11 19:50:48 2019 by ELM ver.2012-10-06 from 001__elm20190411_174233__dat00.bin



Processed Thu Apr 11 19:50:49 2019 by ELM ver.2012-10-06 from 001__elm20190411_174233__dat00.bin

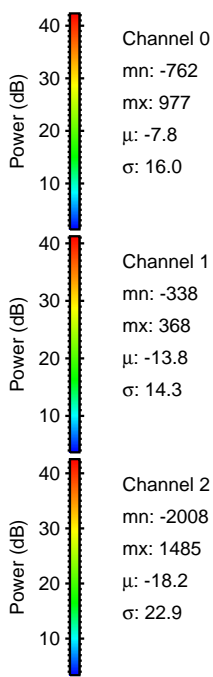
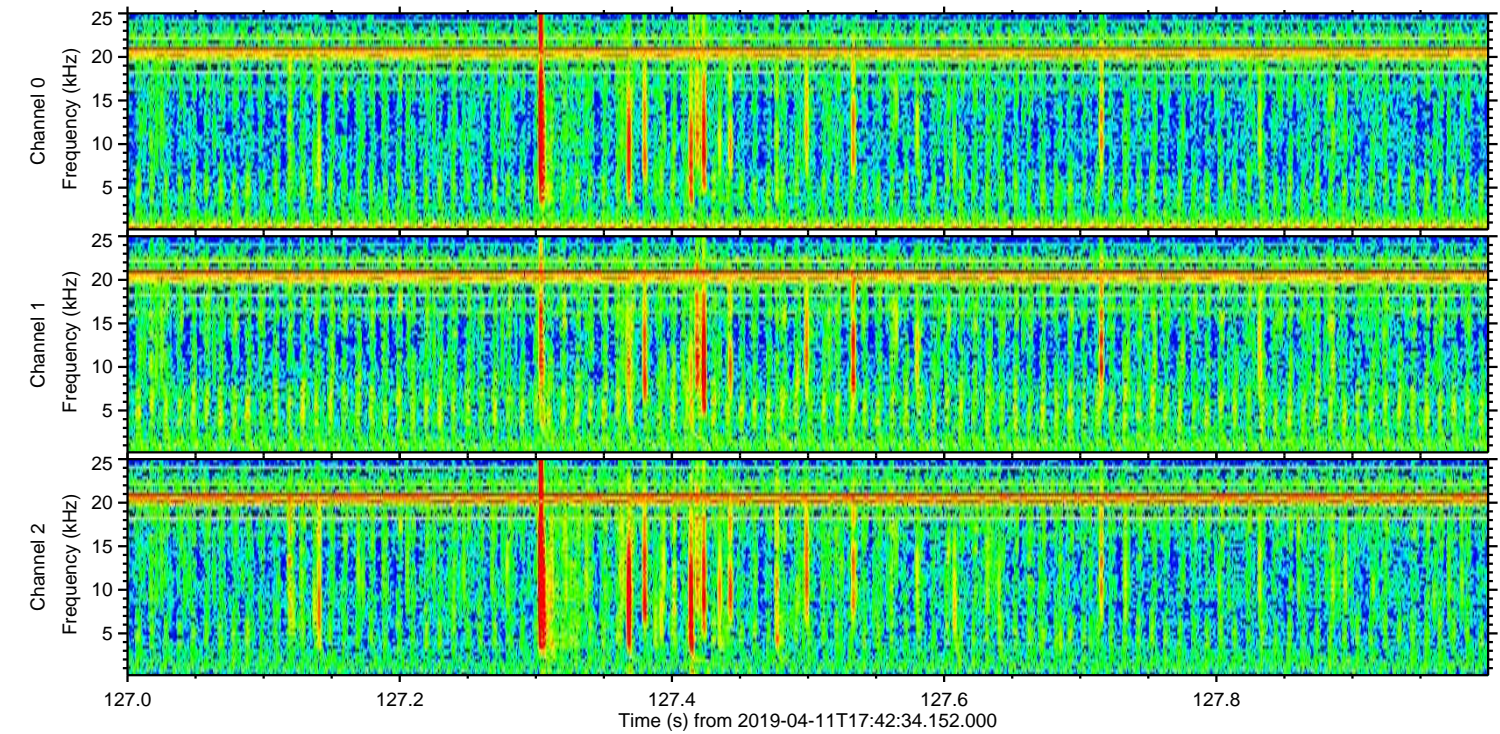
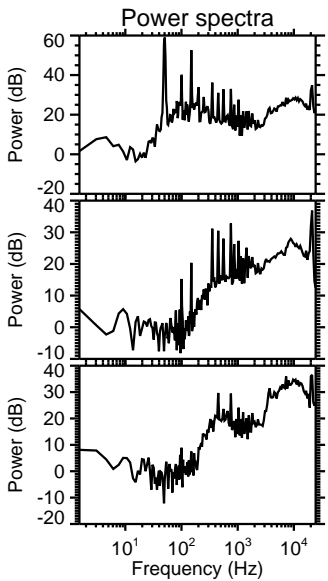
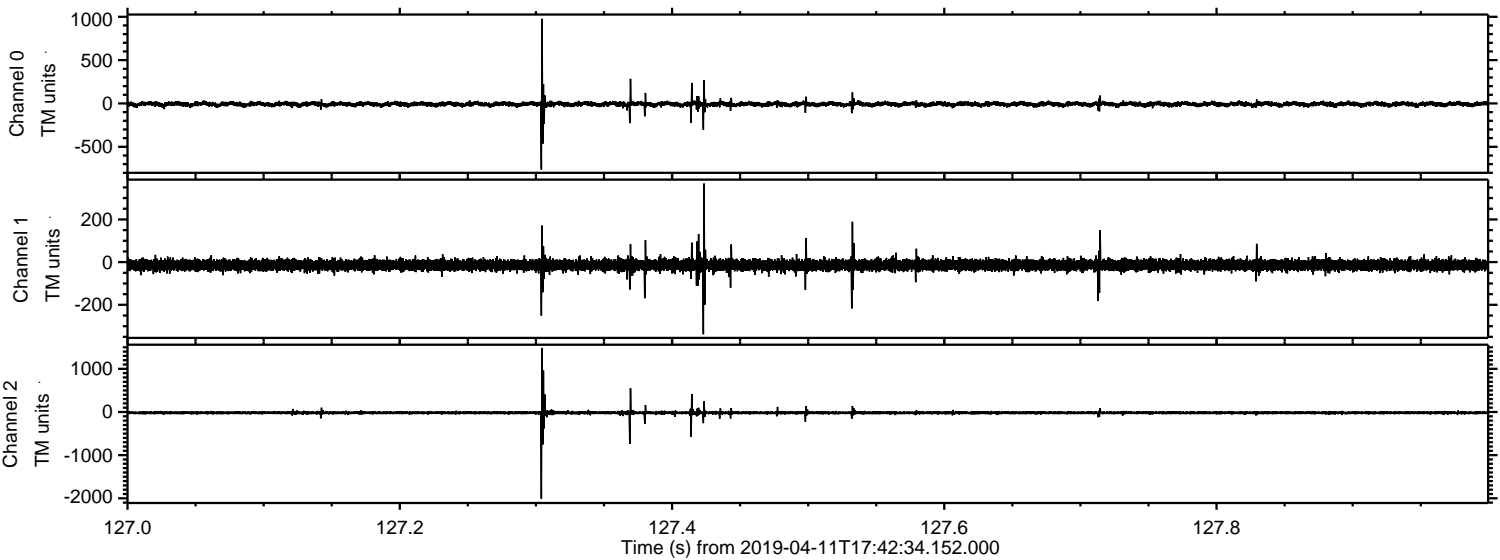


Processed Thu Apr 11 19:50:50 2019 by ELM ver.2012-10-06 from 001__elm20190411_174233__dat00.bin



ELMAVAN 3D WAVEFORMS (Measured data sampled at 50 kHz) 51000 packets of 144 samples from 2019-04-11T17:42:34.152.000. Part 128/147

Processed Thu Apr 11 19:50:51 2019 by ELM ver.2012-10-06 from 001__elm20190411_174233__dat00.bin



Channel 0
mn: -762
mx: 977
 μ : -7.8
 σ : 16.0

Channel 1
mn: -338
mx: 368
 μ : -13.8
 σ : 14.3

Channel 2
mn: -2008
mx: 1485
 μ : -18.2
 σ : 22.9

Processed Thu Apr 11 19:50:52 2019 by ELM ver.2012-10-06 from 001__elm20190411_174233__dat00.bin

