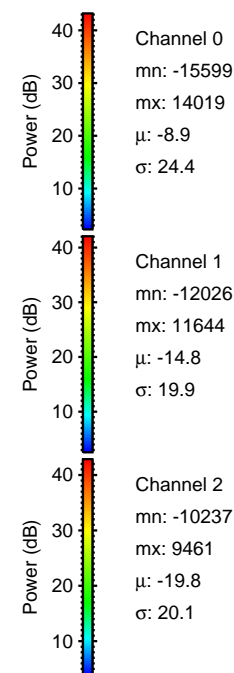
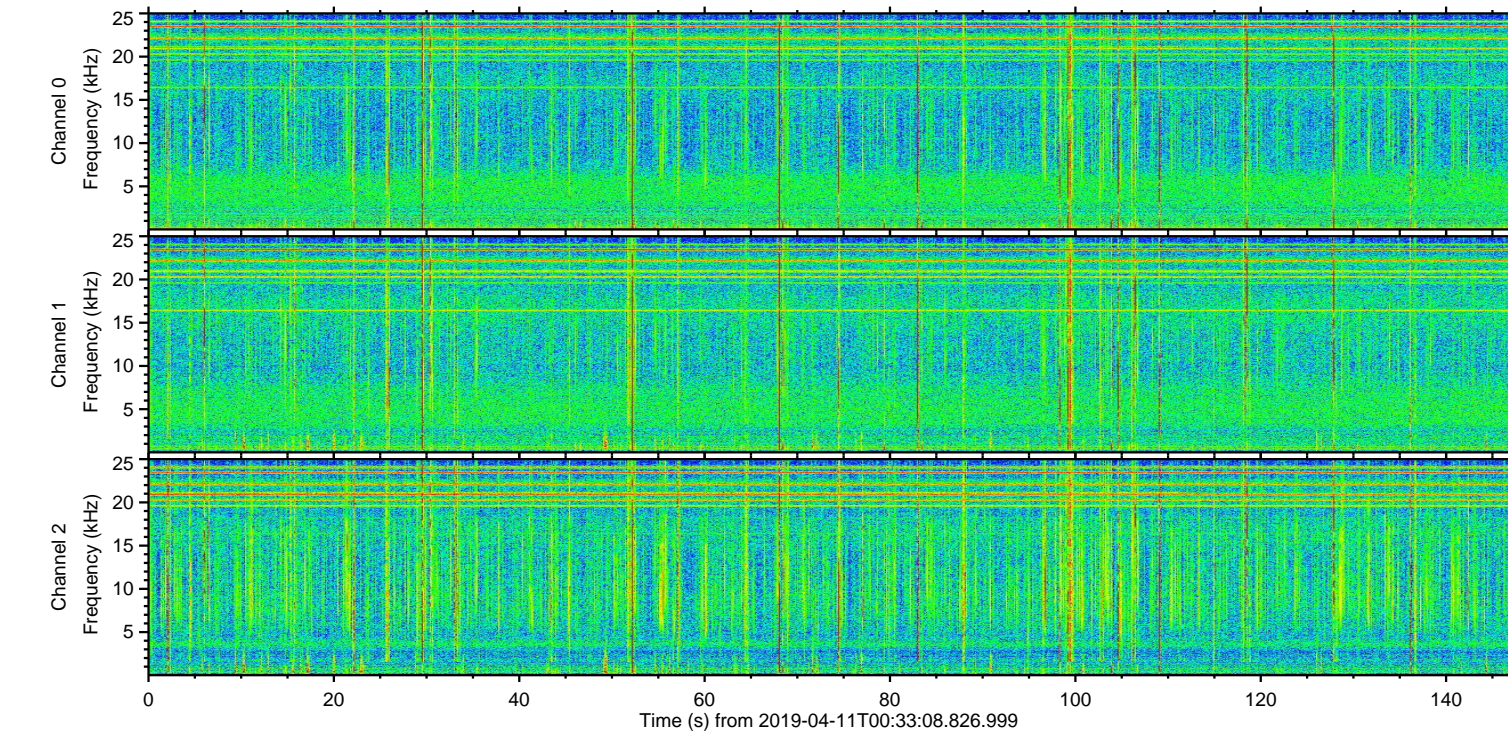
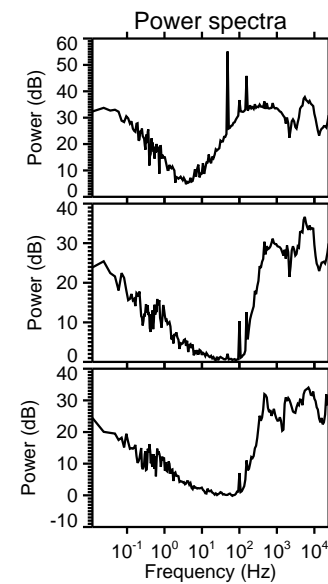
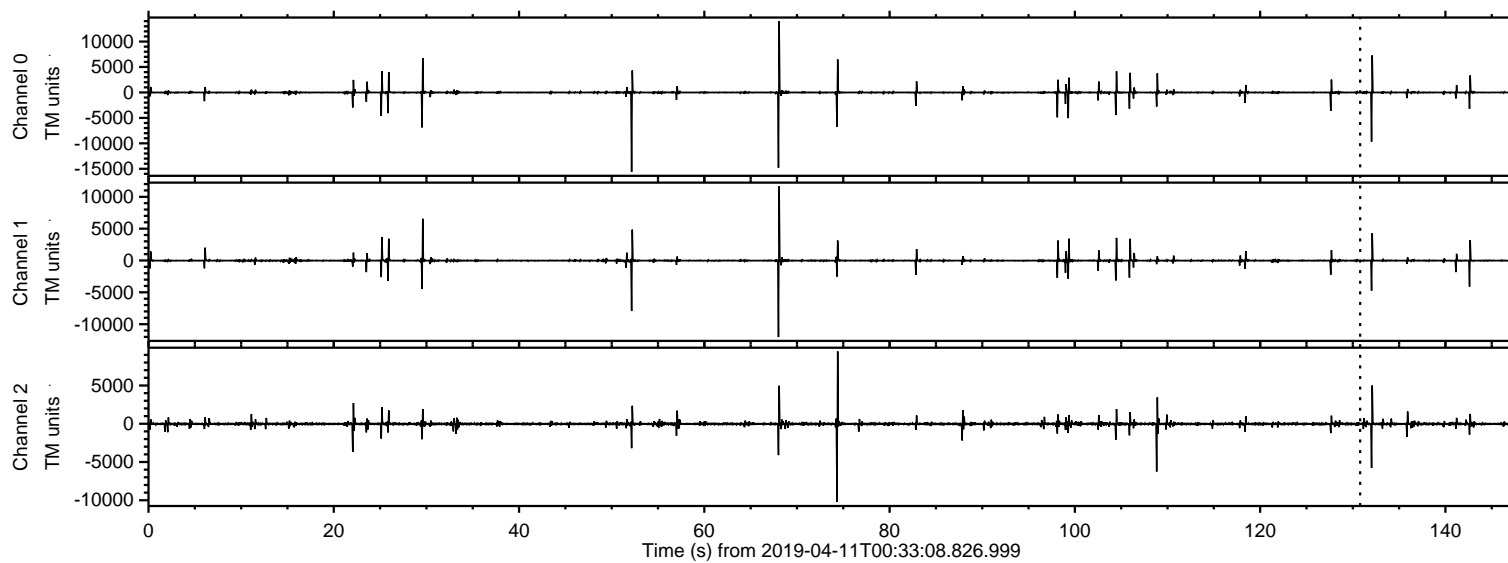
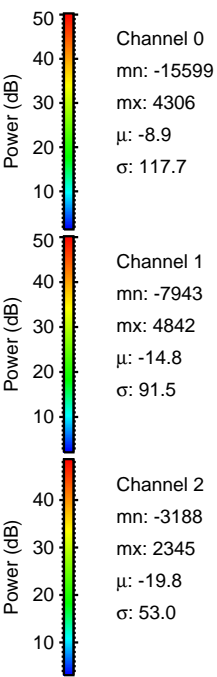
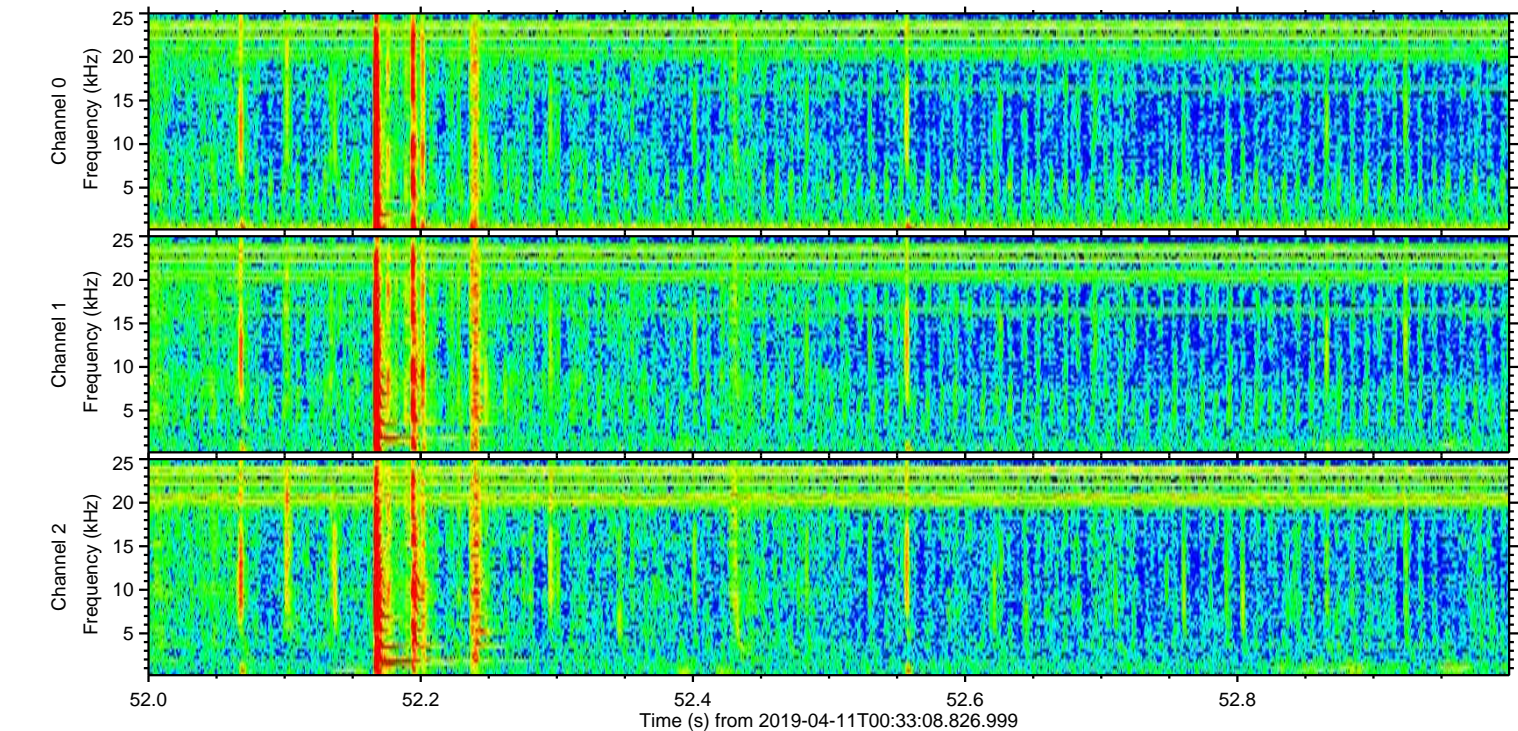
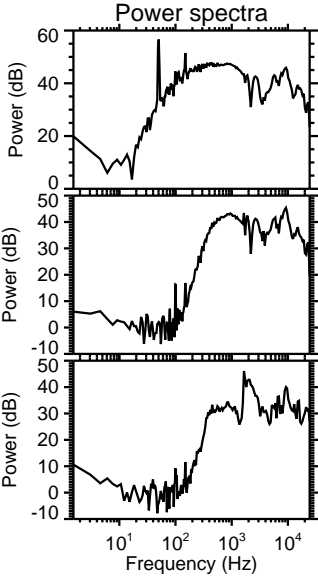
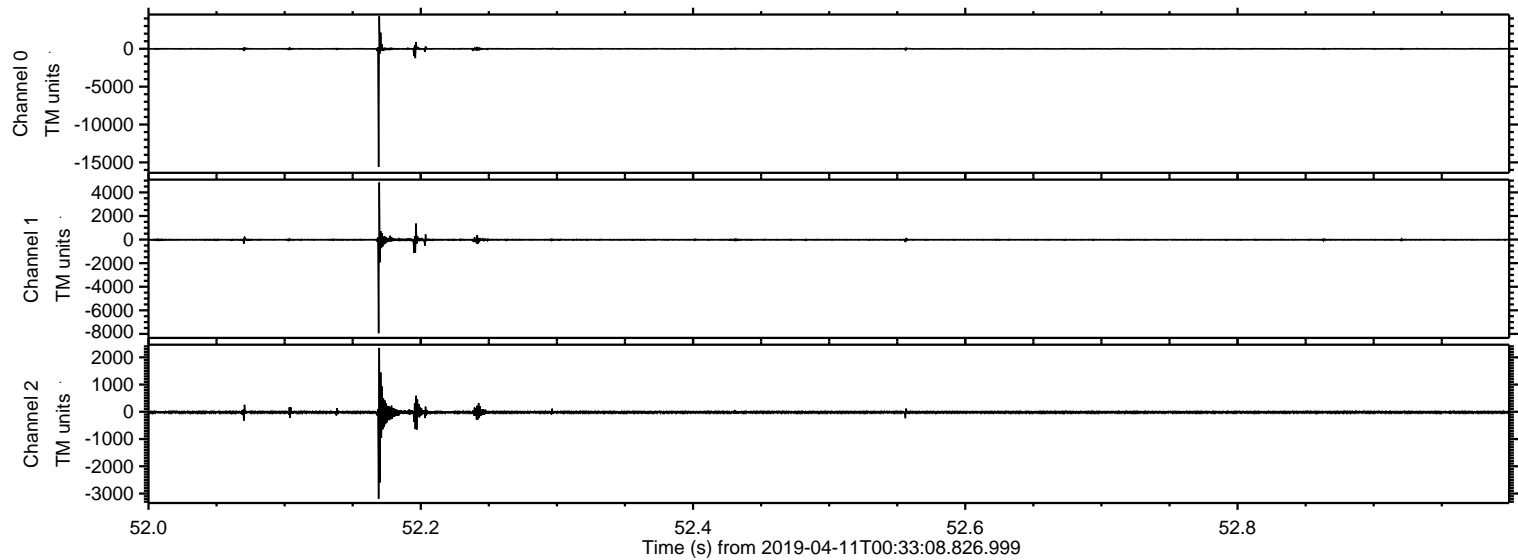


ELMAVAN 3D WAVEFORMS (Measured data sampled at 50 kHz) 50999 packets of 144 samples from 2019-04-11T00:33:08.826.999.

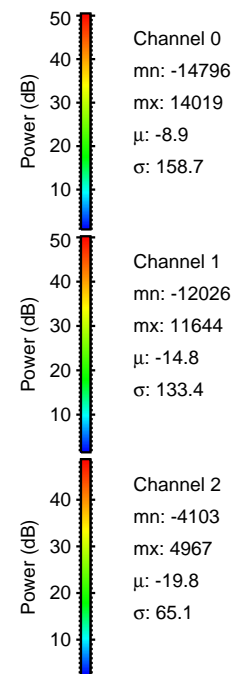
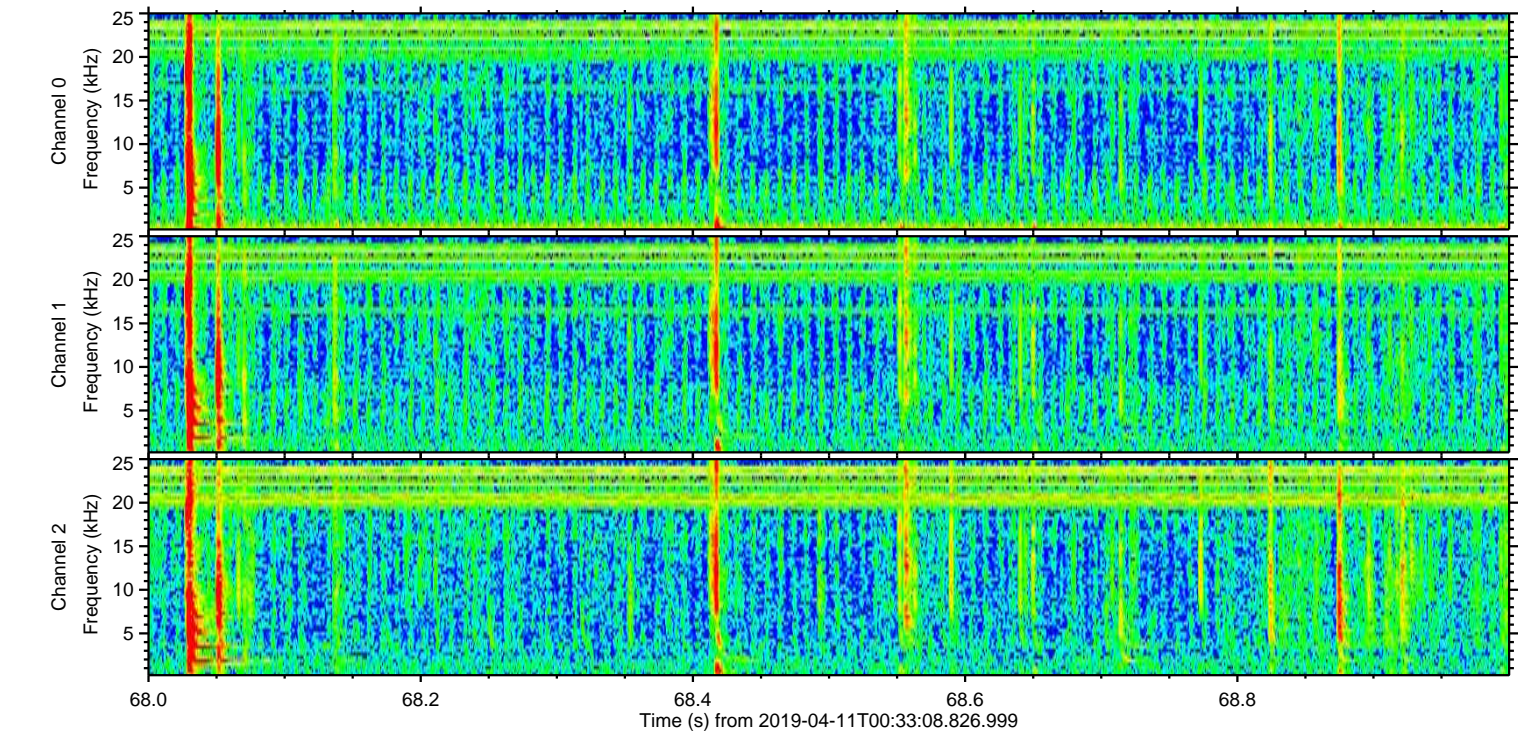
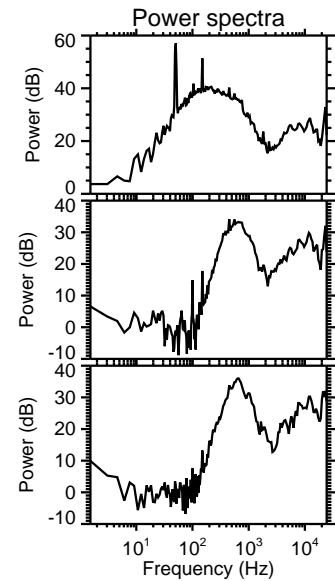
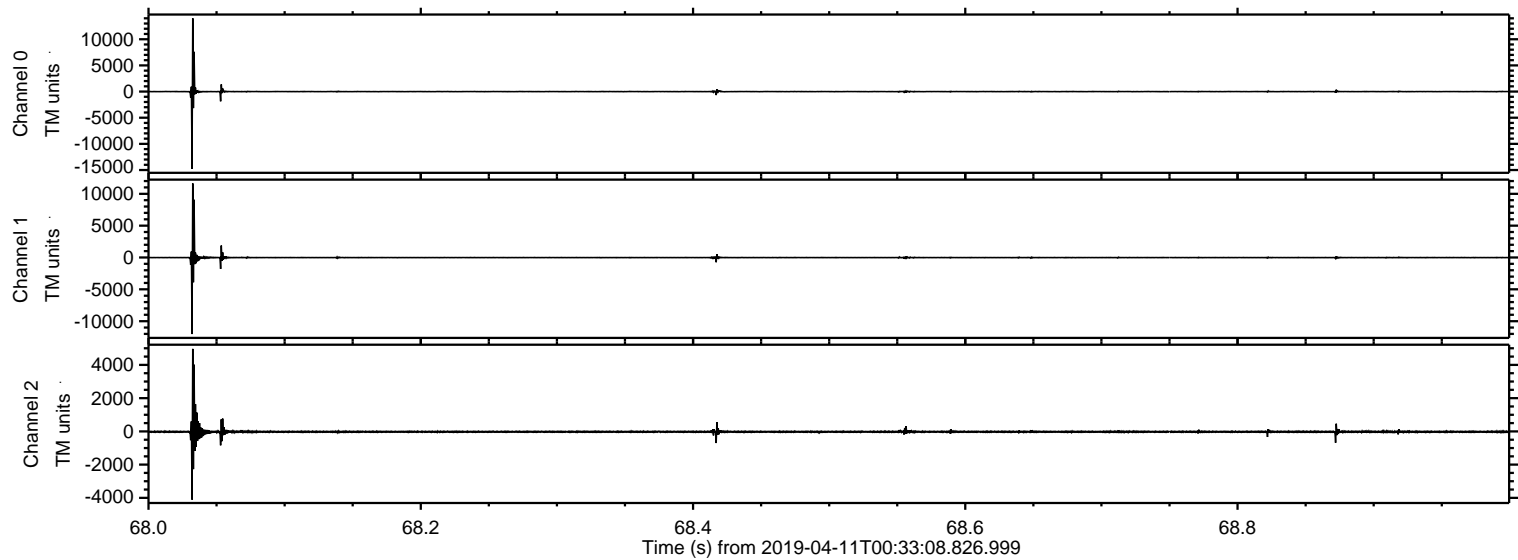
Processed Thu Apr 11 02:41:15 2019 by ELM ver.2012-10-06 from 001__elm20190411_003307__dat00.bin



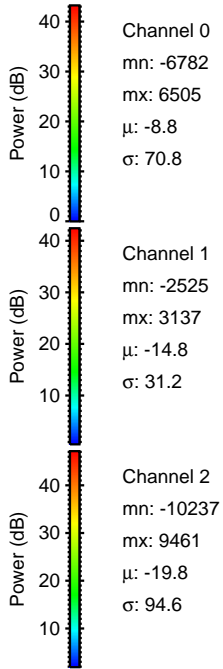
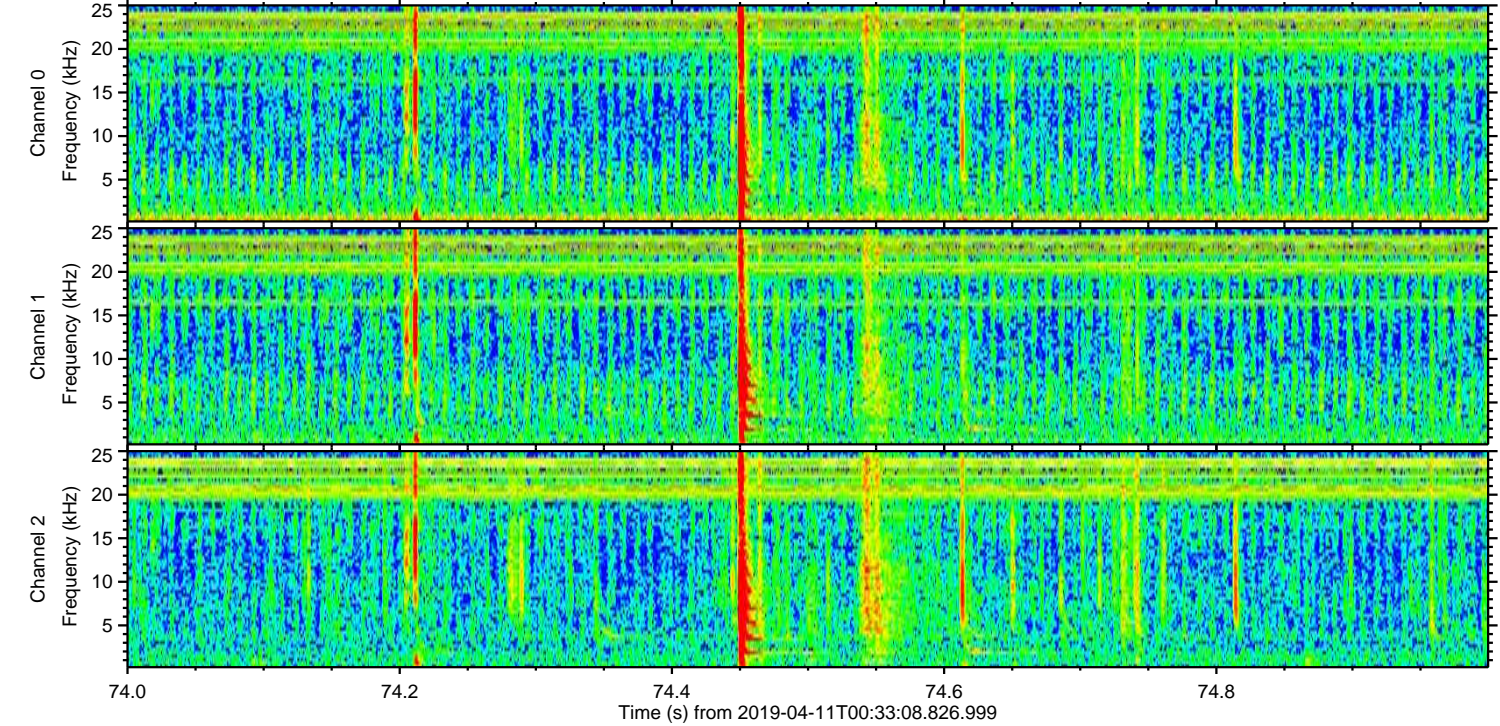
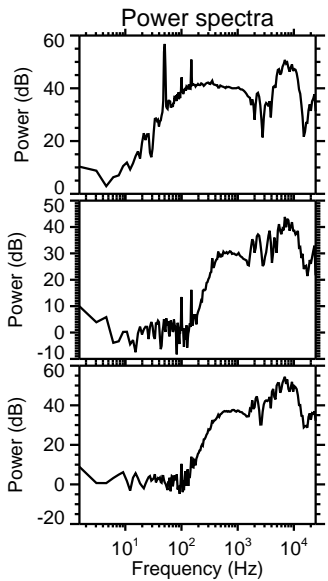
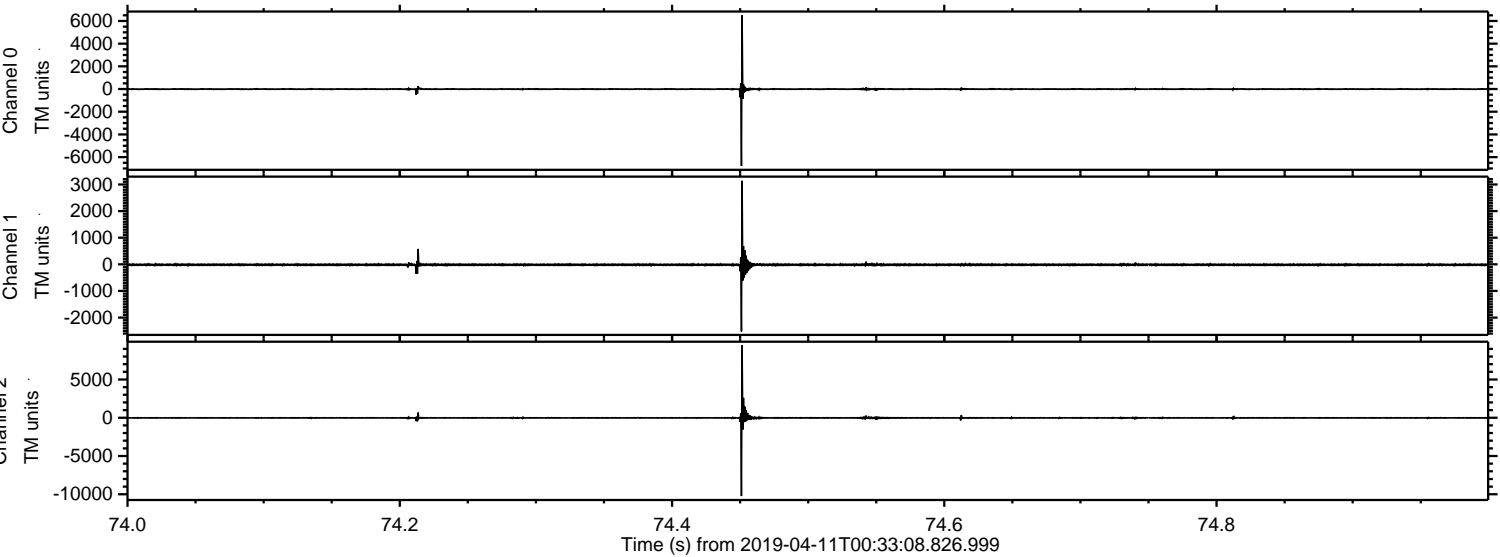
Processed Thu Apr 11 02:41:21 2019 by ELM ver.2012-10-06 from 001__elm20190411_003307__dat00.bin



Processed Thu Apr 11 02:41:22 2019 by ELM ver.2012-10-06 from 001__elm20190411_003307__dat00.bin

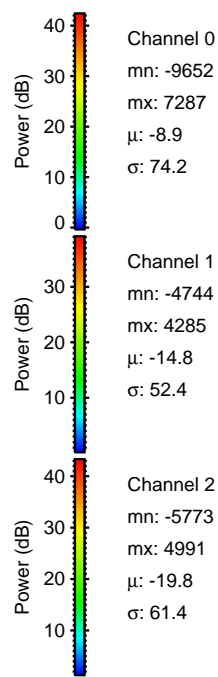
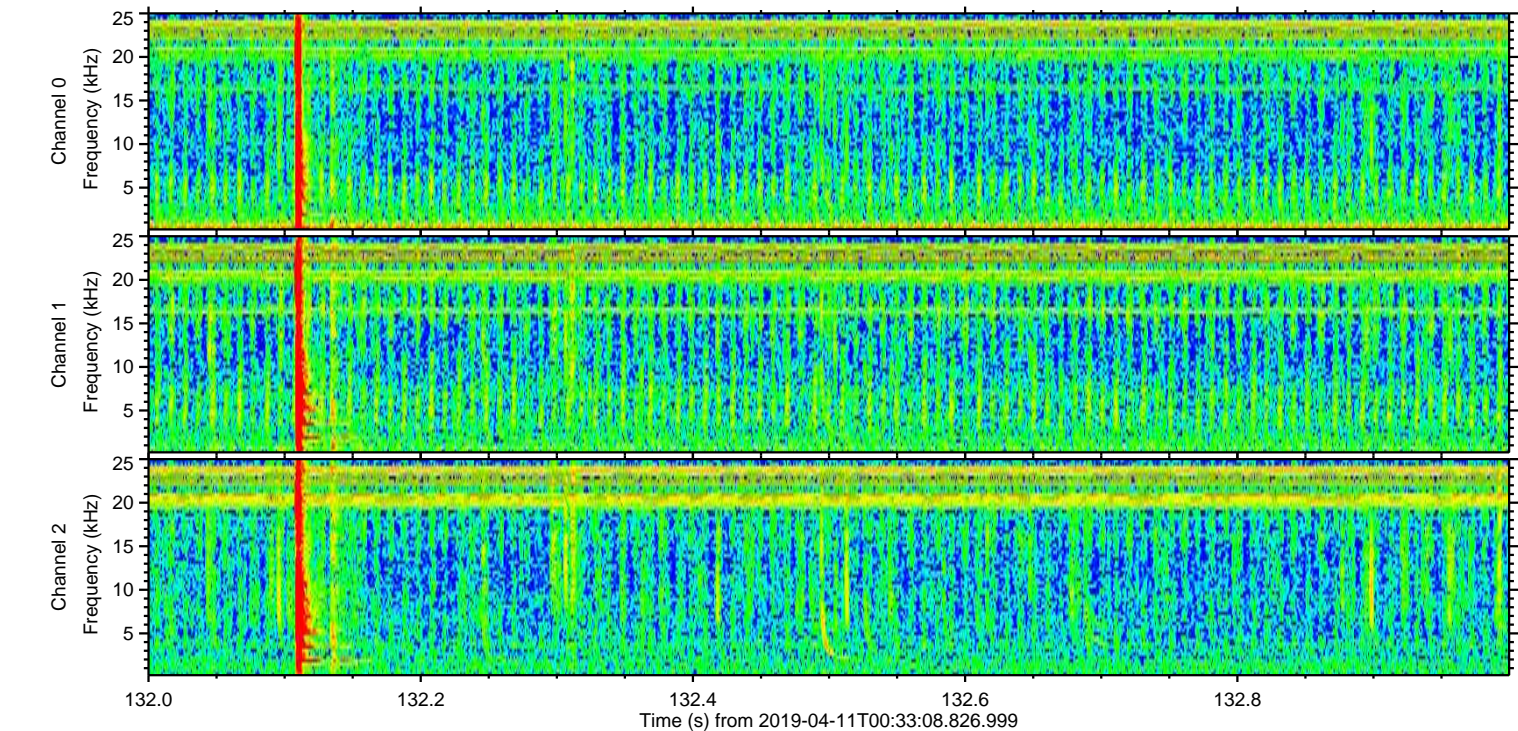
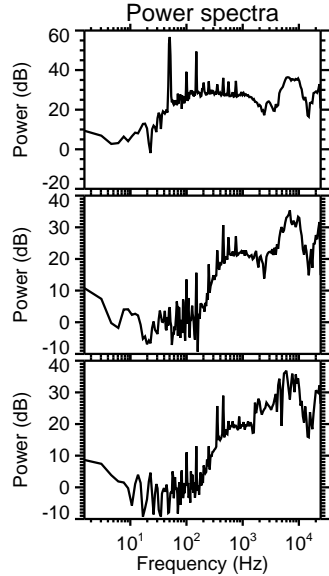
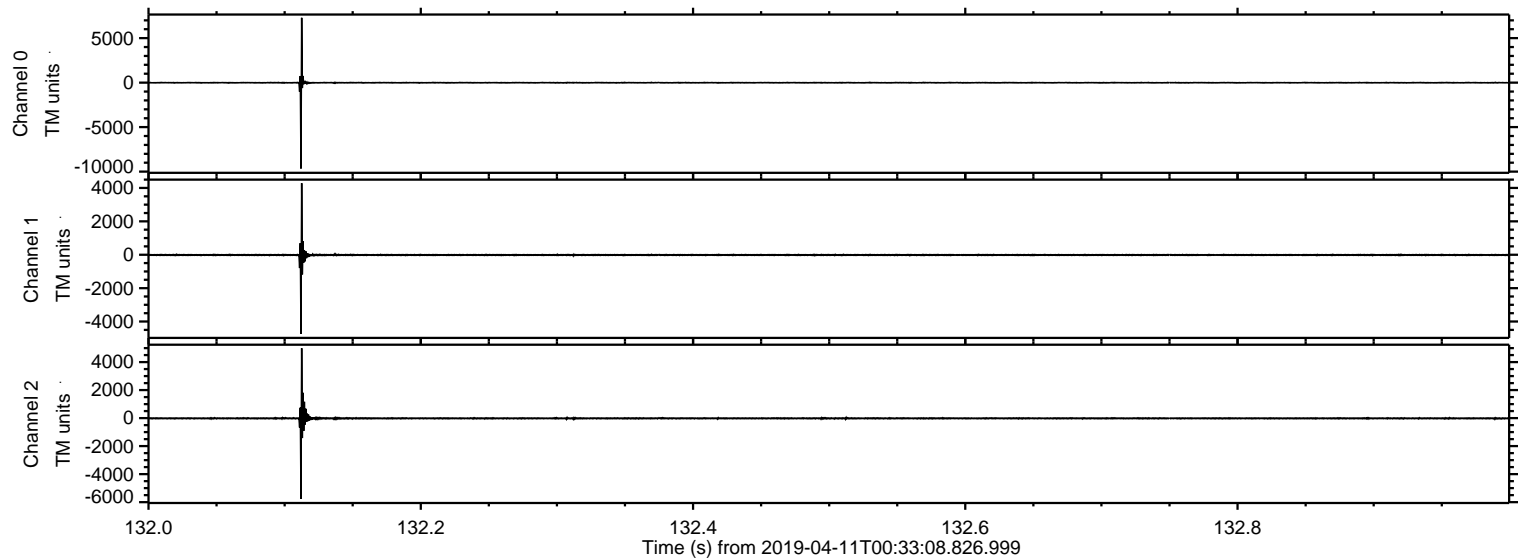


Processed Thu Apr 11 02:41:22 2019 by ELM ver.2012-10-06 from 001__elm20190411_003307__dat00.bin

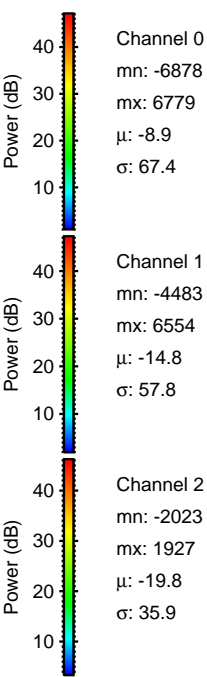
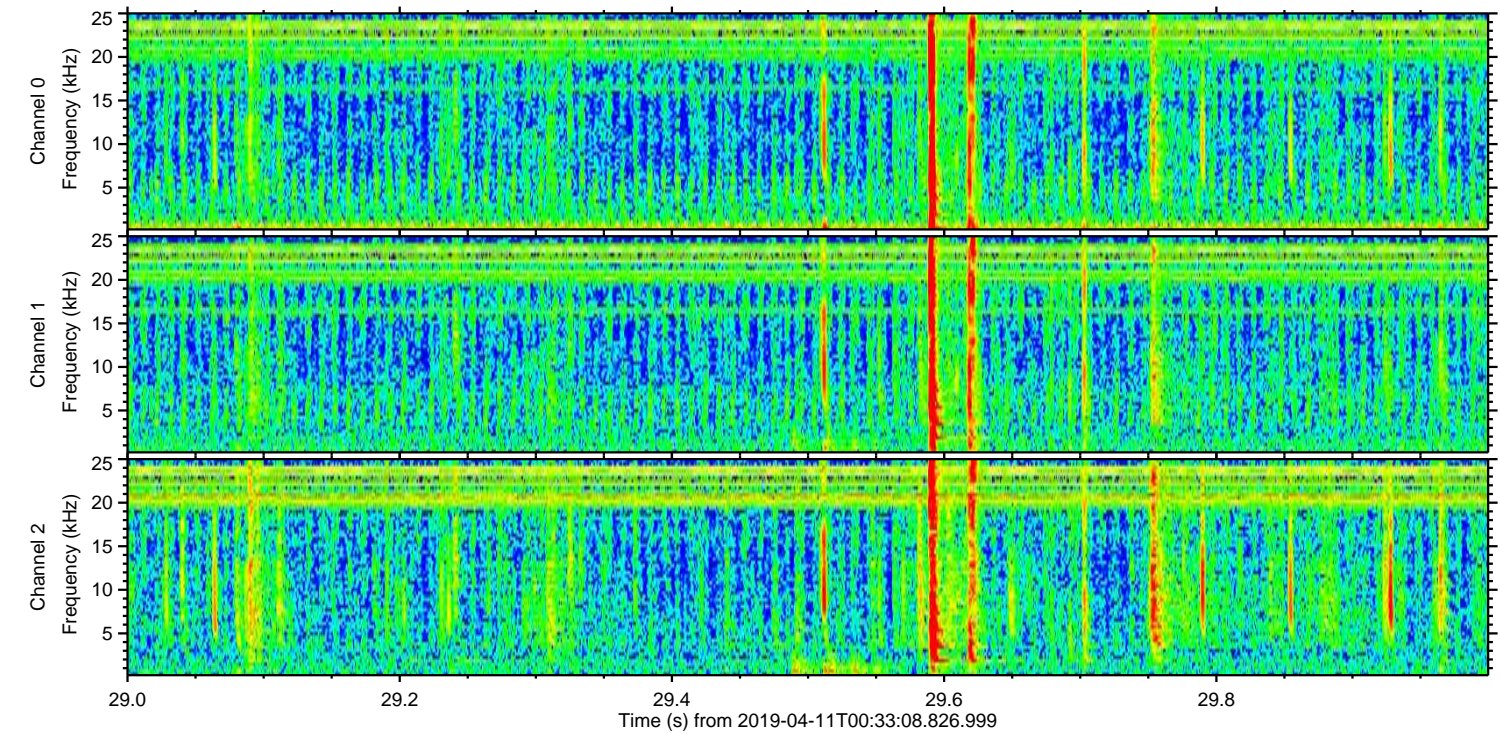
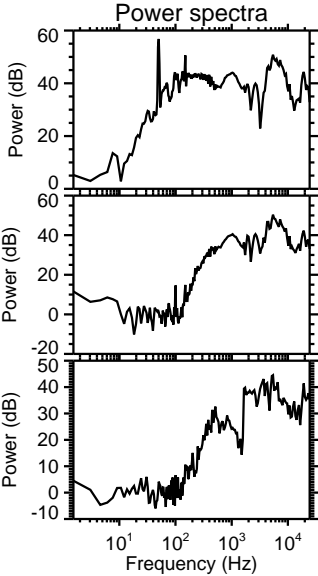
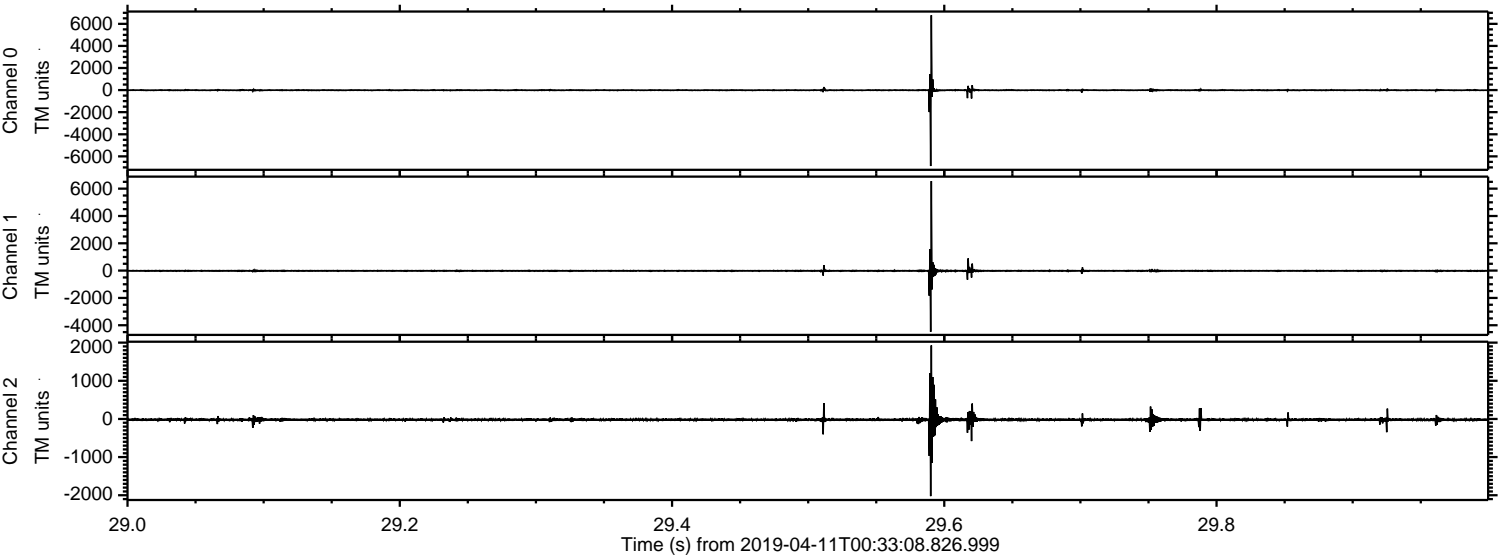


ELMAVAN 3D WAVEFORMS (Measured data sampled at 50 kHz) 50999 packets of 144 samples from 2019-04-11T00:33:08.826.999. Part 133/147

Processed Thu Apr 11 02:41:23 2019 by ELM ver.2012-10-06 from 001__elm20190411_003307__dat00.bin



Processed Thu Apr 11 02:41:23 2019 by ELM ver.2012-10-06 from 001__elm20190411_003307__dat00.bin



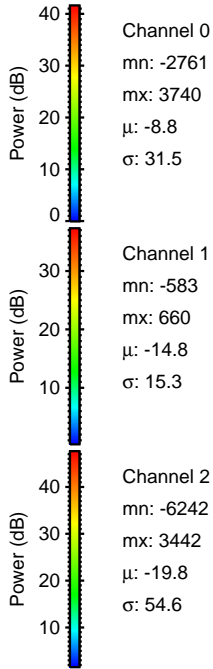
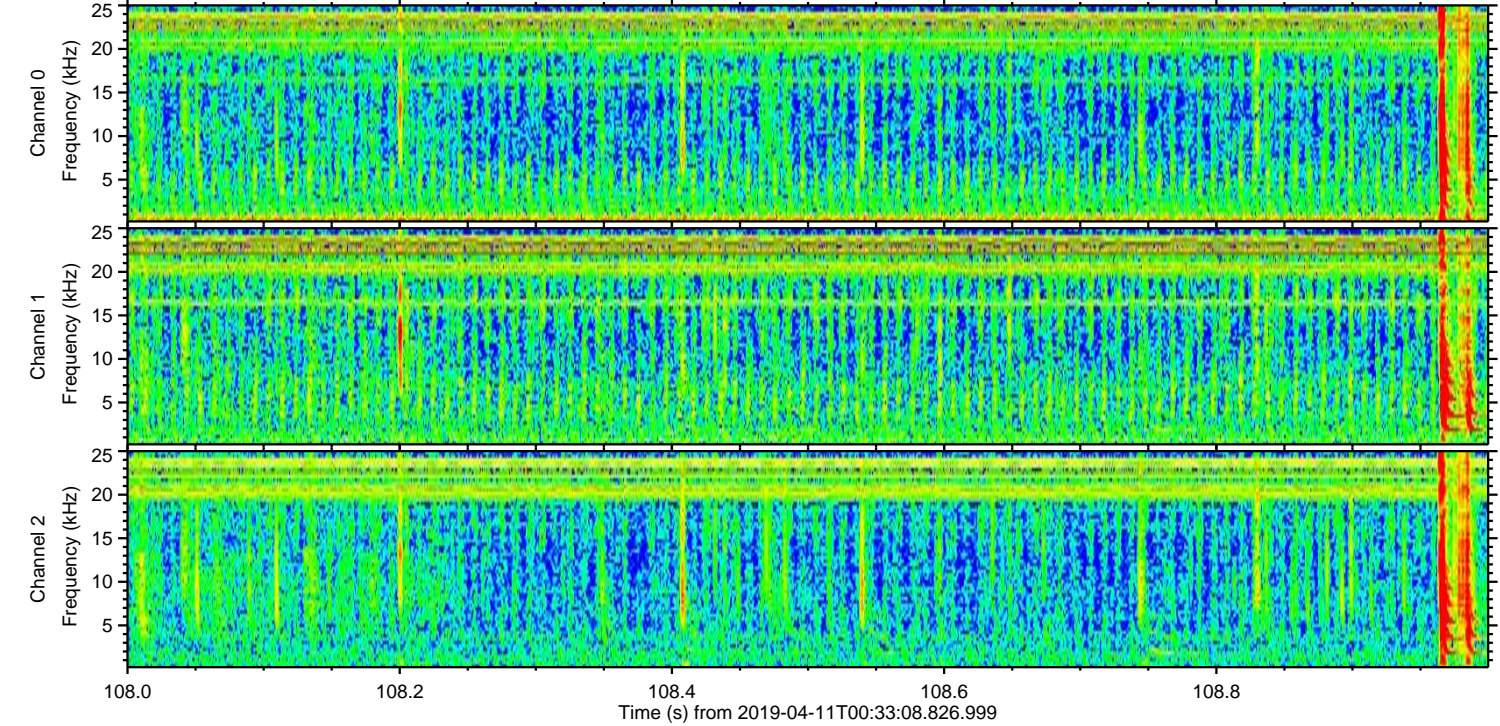
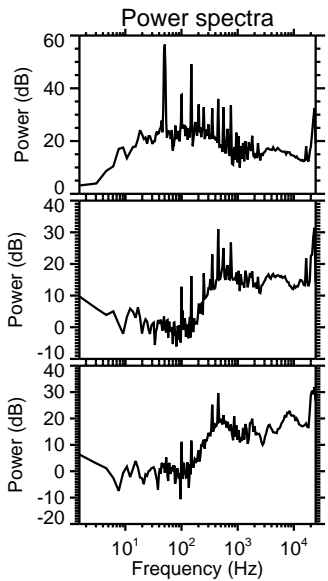
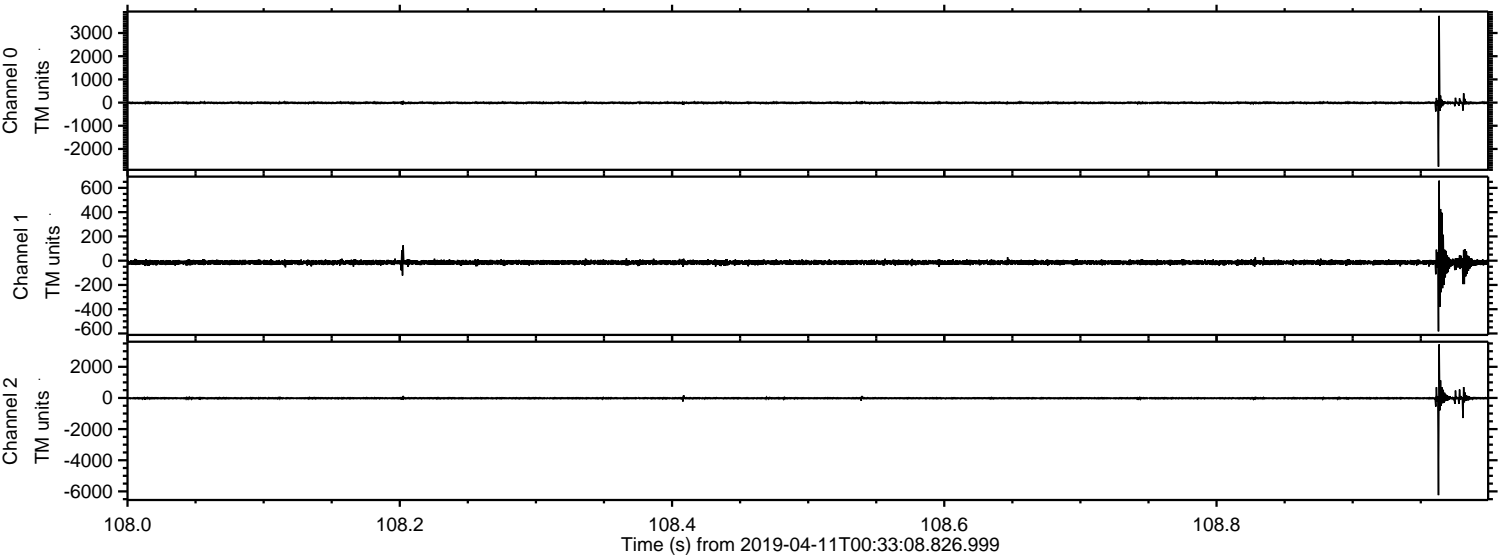
Channel 0
mn: -6878
mx: 6779
 μ : -8.9
 σ : 67.4

Channel 1
mn: -4483
mx: 6554
 μ : -14.8
 σ : 57.8

Channel 2
mn: -2023
mx: 1927
 μ : -19.8
 σ : 35.9

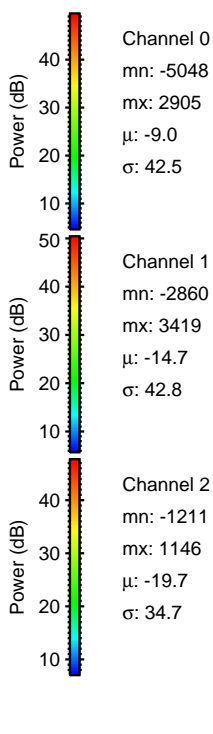
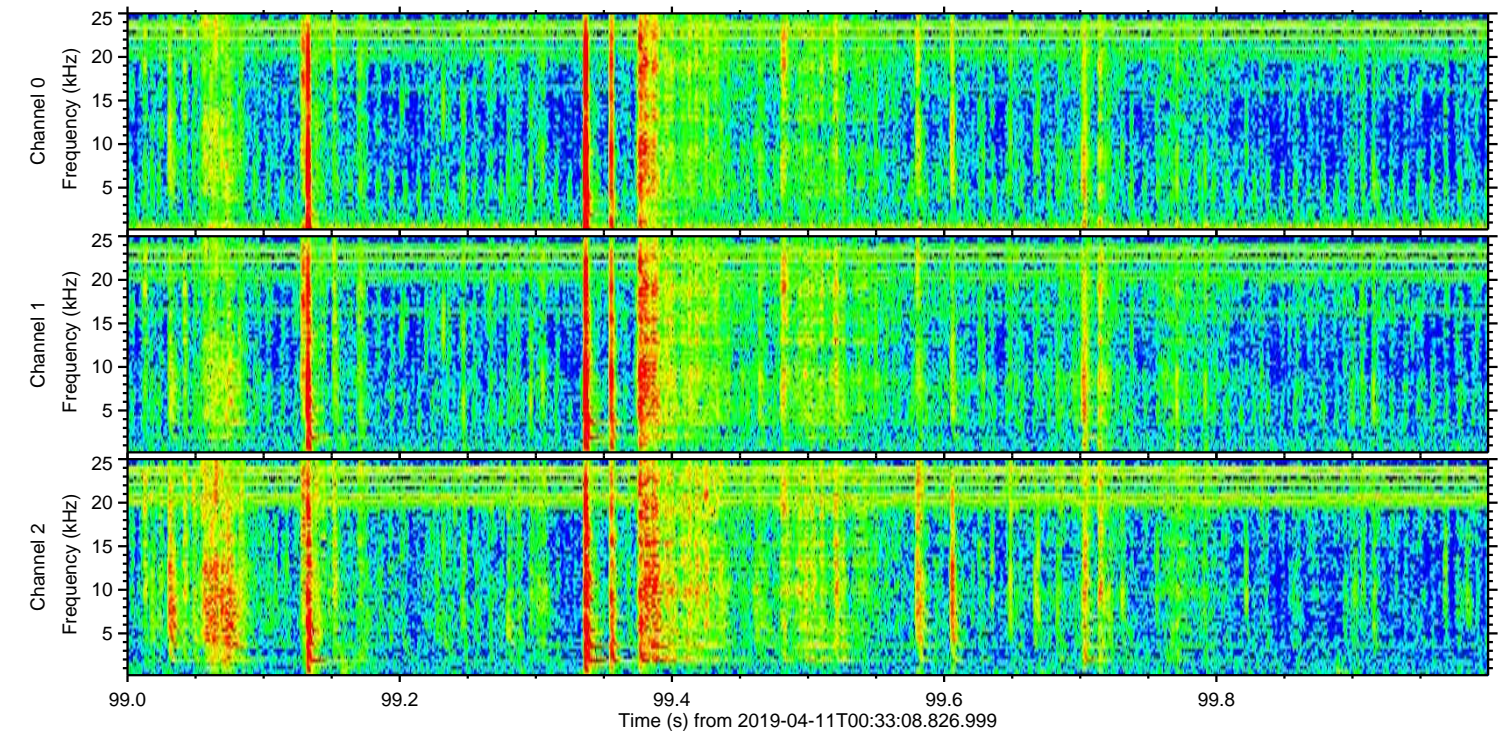
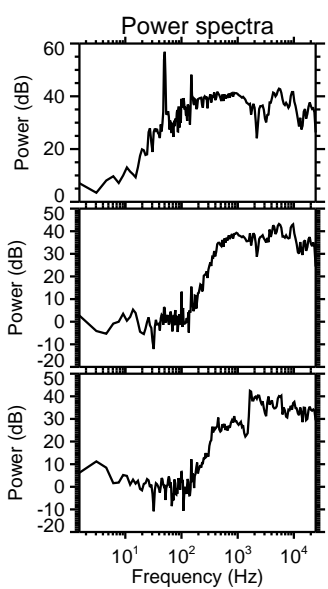
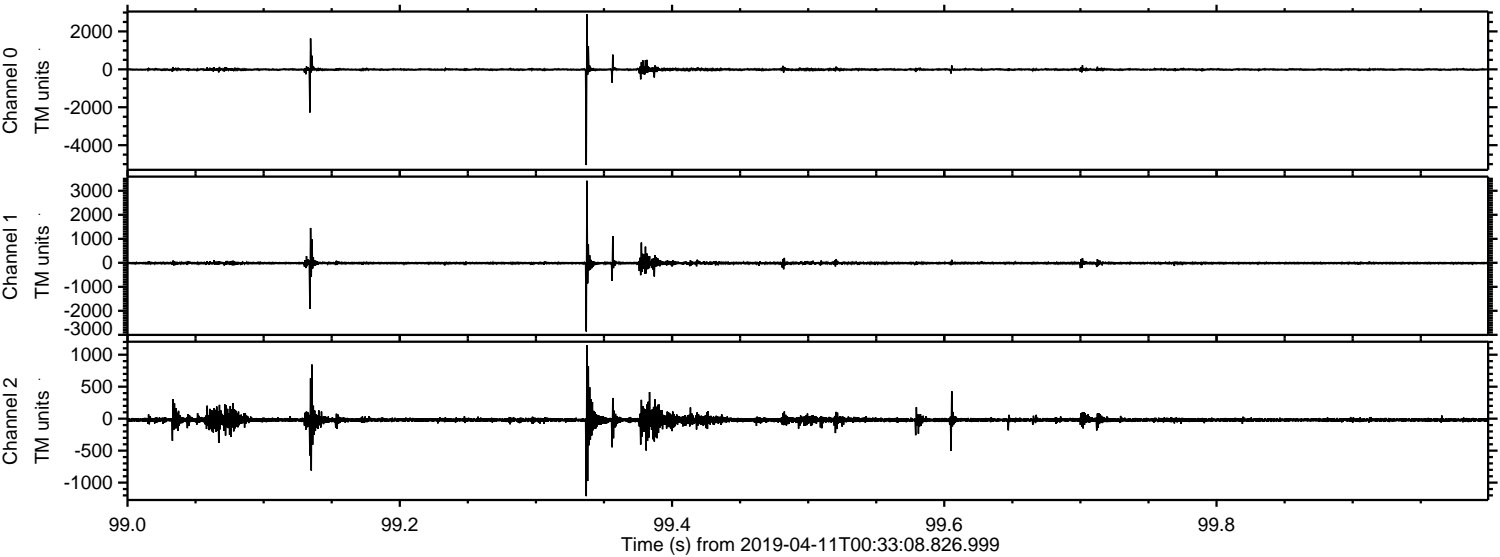
ELMAVAN 3D WAVEFORMS (Measured data sampled at 50 kHz) 50999 packets of 144 samples from 2019-04-11T00:33:08.826.999. Part 109/147

Processed Thu Apr 11 02:41:24 2019 by ELM ver.2012-10-06 from 001__elm20190411_003307__dat00.bin

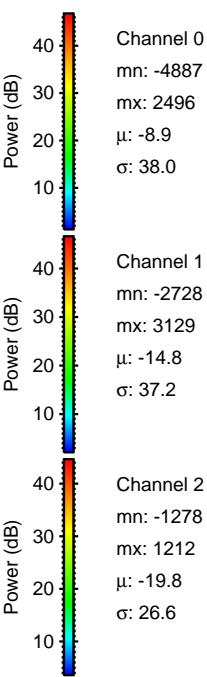
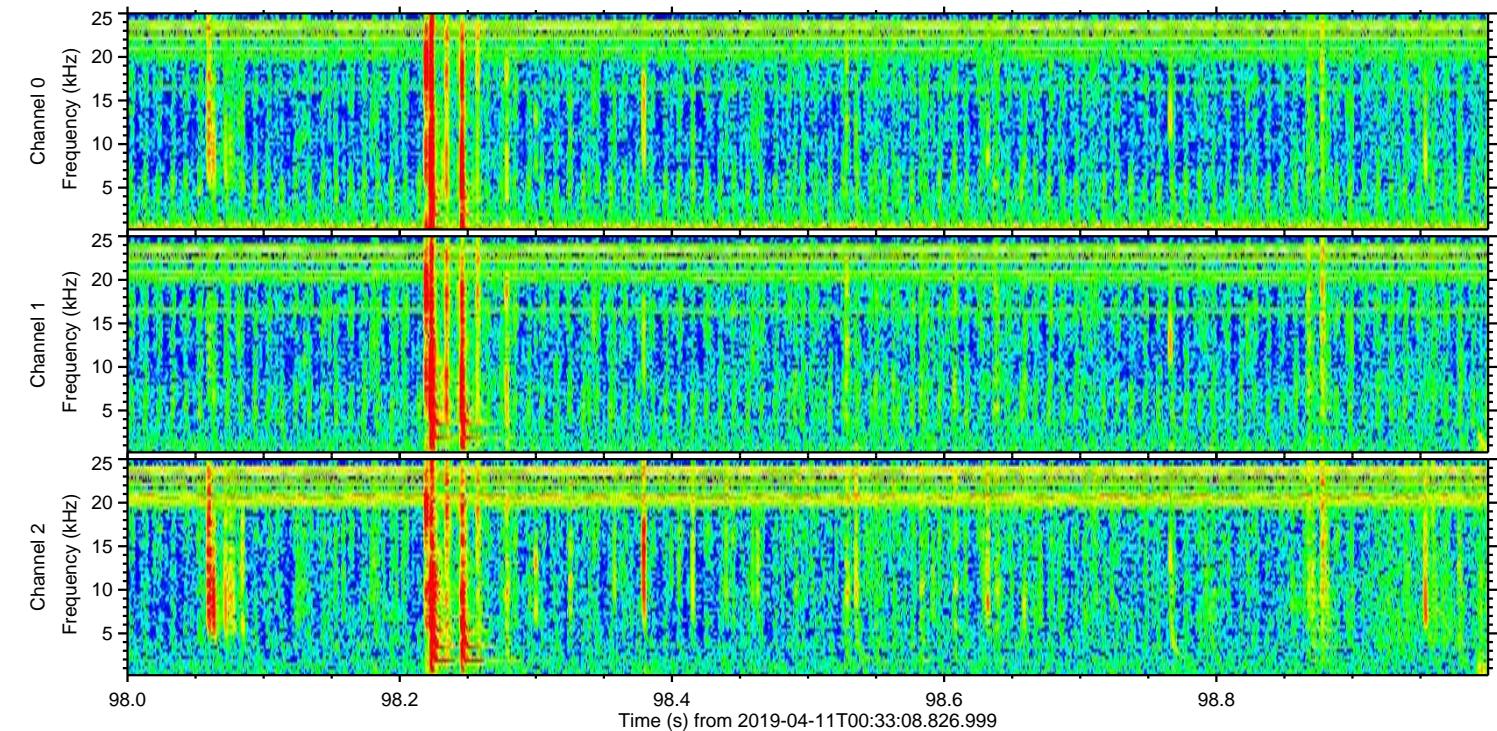
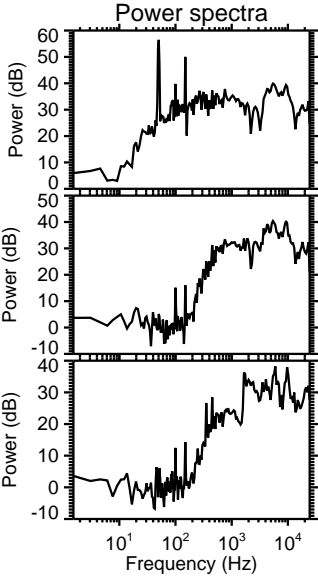
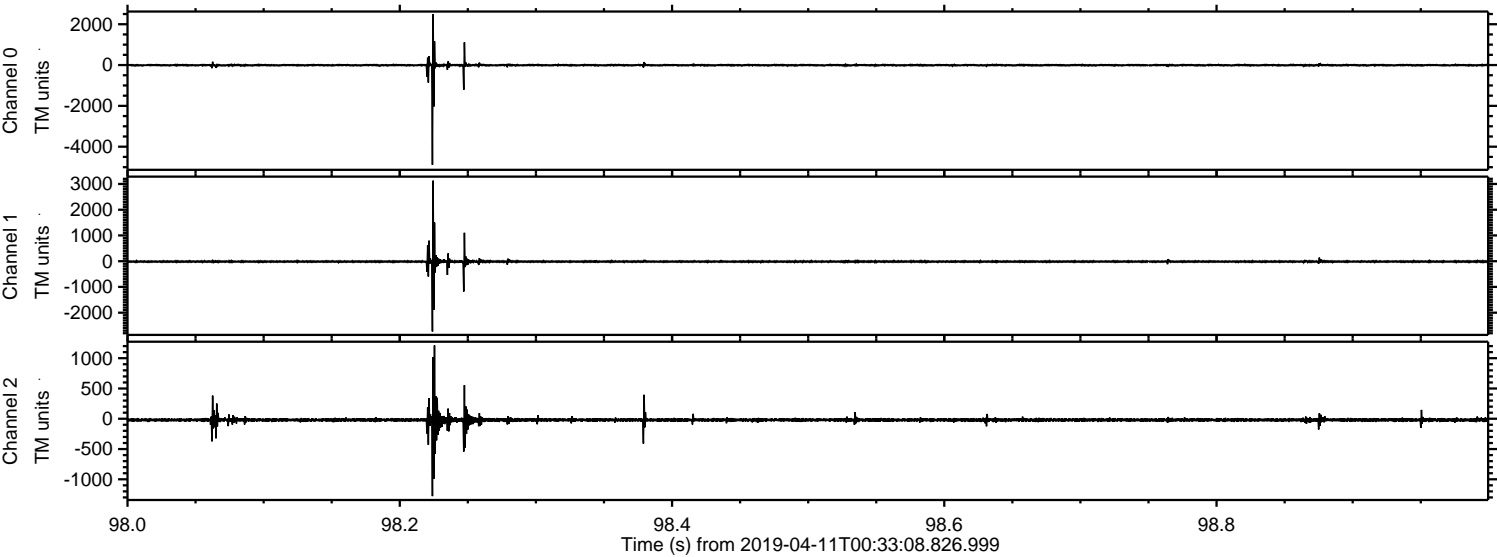


ELMAVAN 3D WAVEFORMS (Measured data sampled at 50 kHz) 50999 packets of 144 samples from 2019-04-11T00:33:08.826.999. Part 100/147

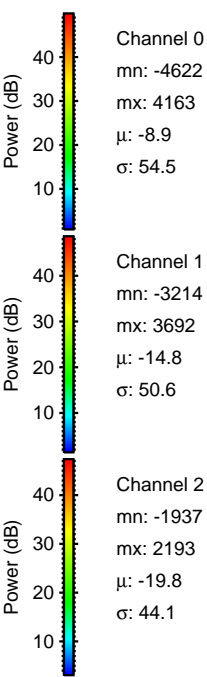
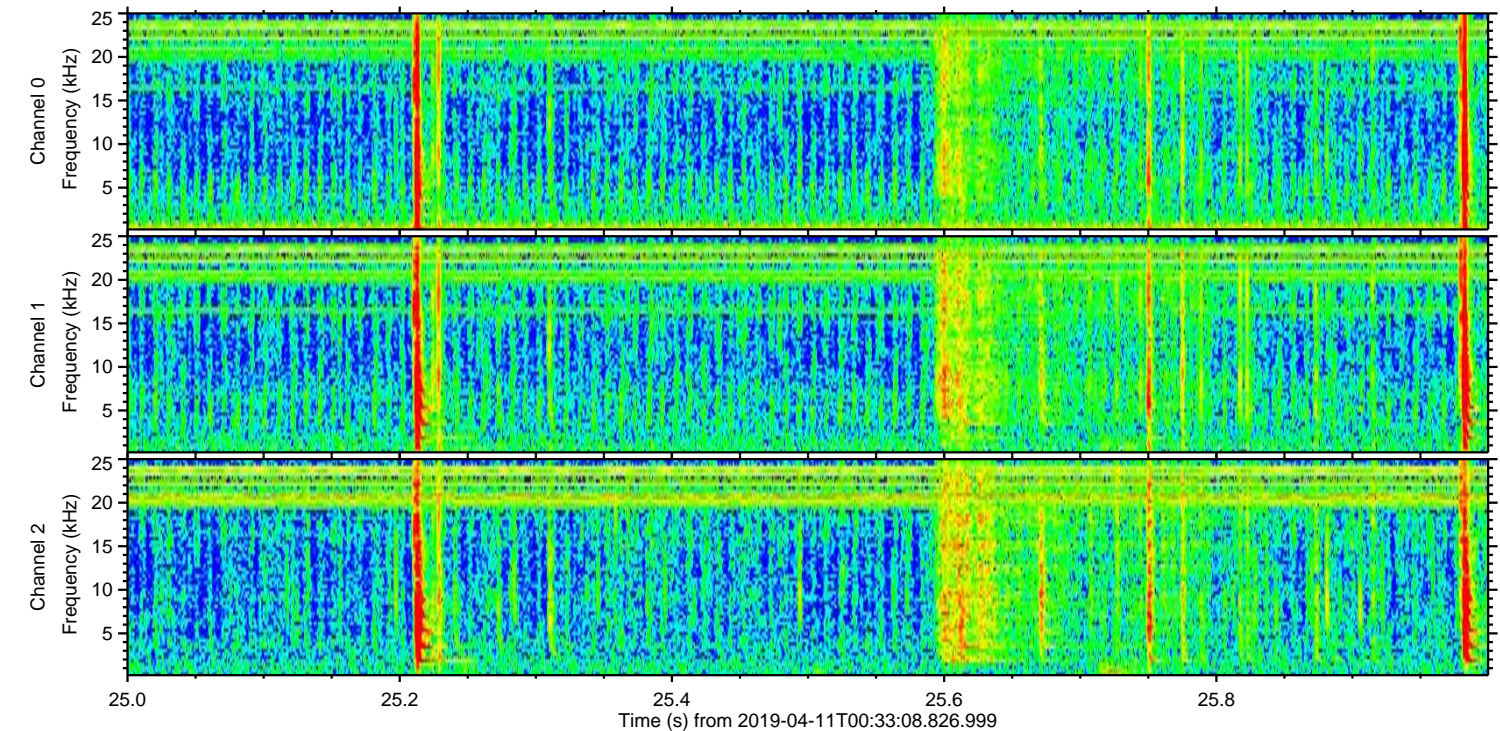
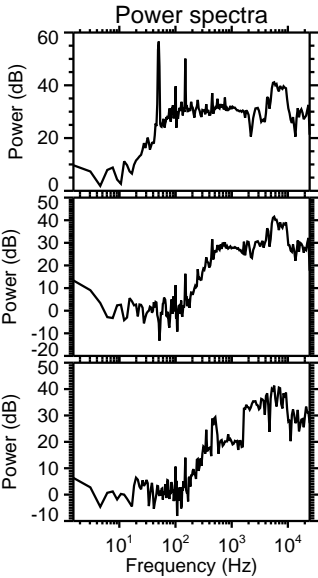
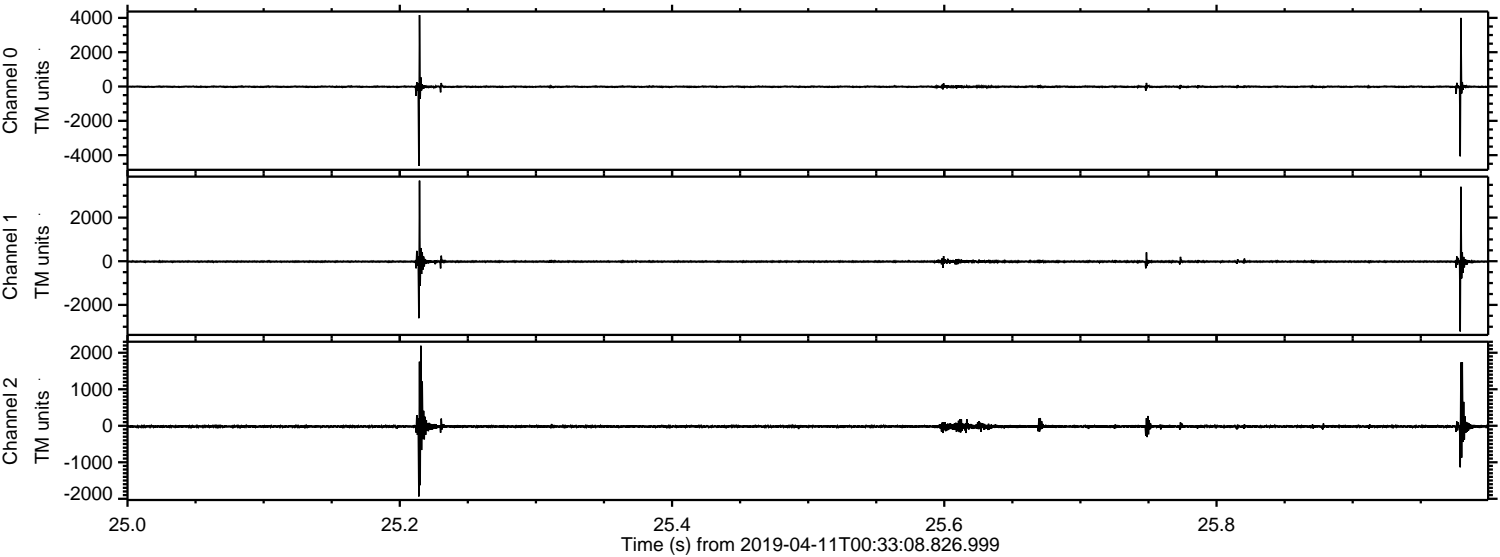
Processed Thu Apr 11 02:41:25 2019 by ELM ver.2012-10-06 from 001__elm20190411_003307__dat00.bin



Processed Thu Apr 11 02:41:25 2019 by ELM ver.2012-10-06 from 001__elm20190411_003307__dat00.bin



Processed Thu Apr 11 02:41:26 2019 by ELM ver.2012-10-06 from 001__elm20190411_003307__dat00.bin



Channel 0
mn: -4622
mx: 4163
 μ : -8.9
 σ : 54.5

Channel 1
mn: -3214
mx: 3692
 μ : -14.8
 σ : 50.6

Channel 2
mn: -1937
mx: 2193
 μ : -19.8
 σ : 44.1

Processed Thu Apr 11 02:41:27 2019 by ELM ver.2012-10-06 from 001__elm20190411_003307__dat00.bin

