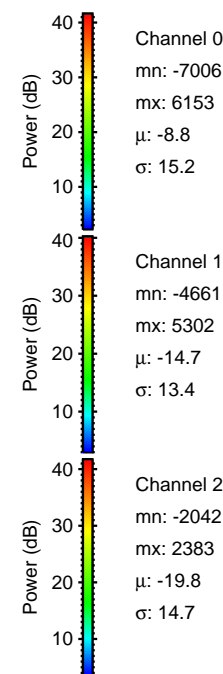
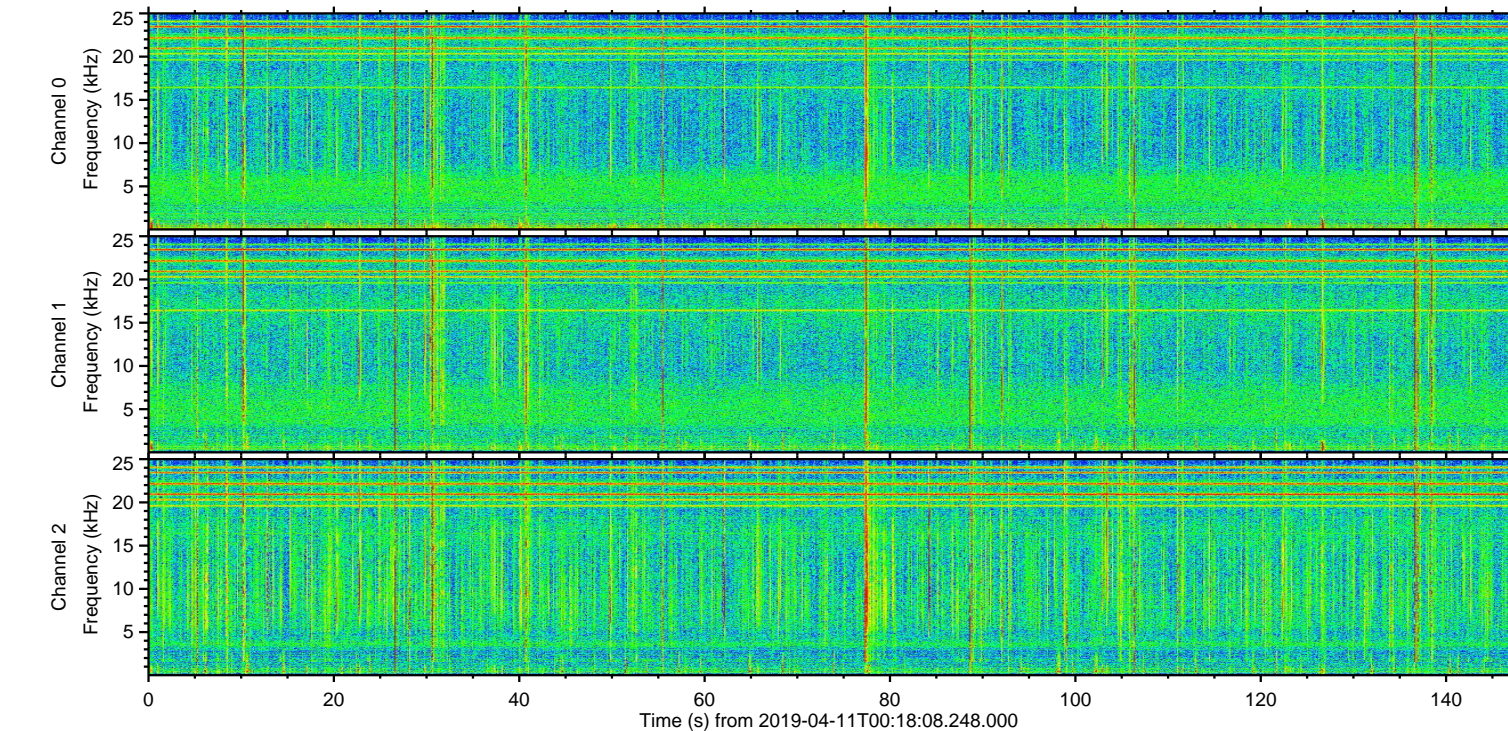
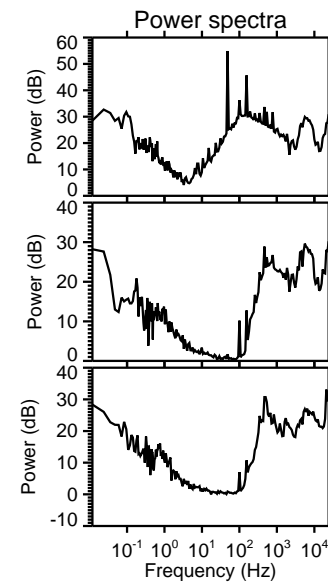
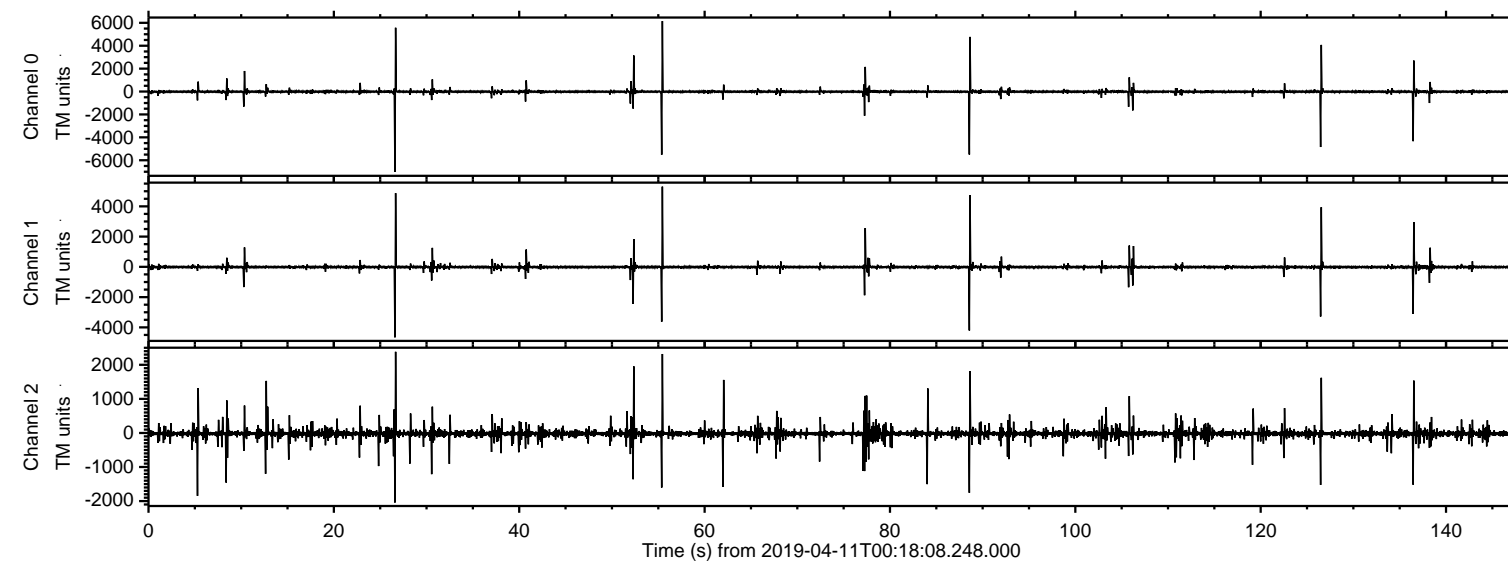


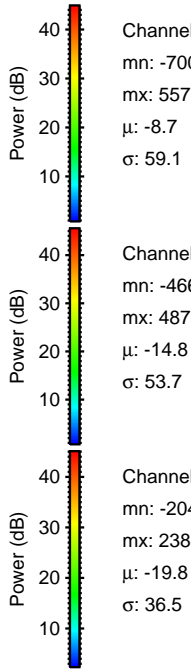
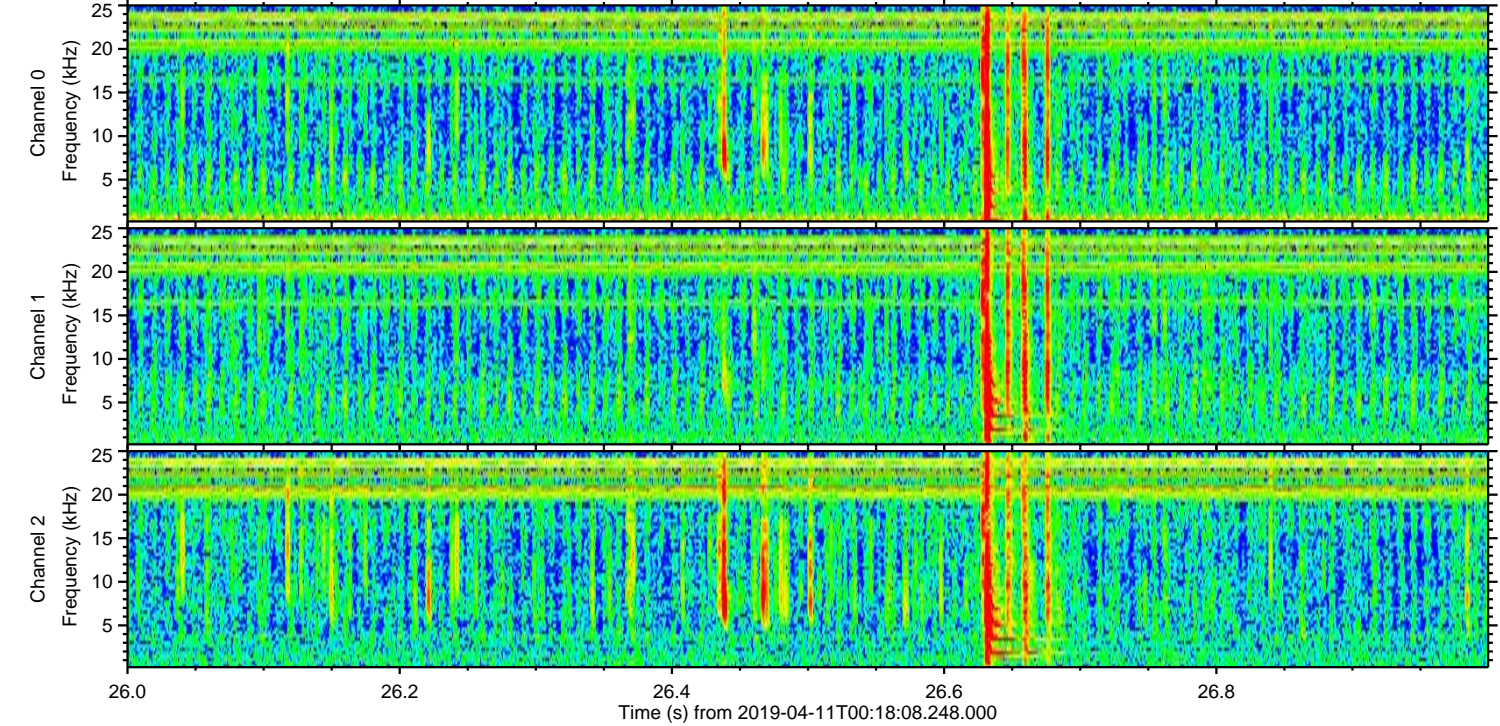
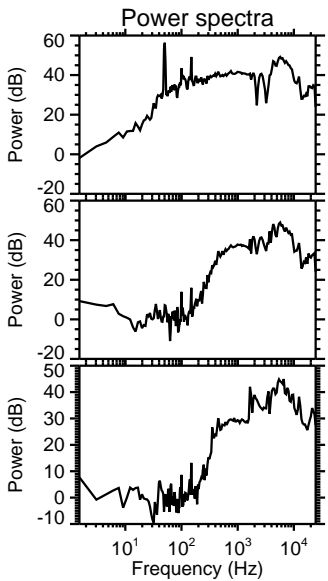
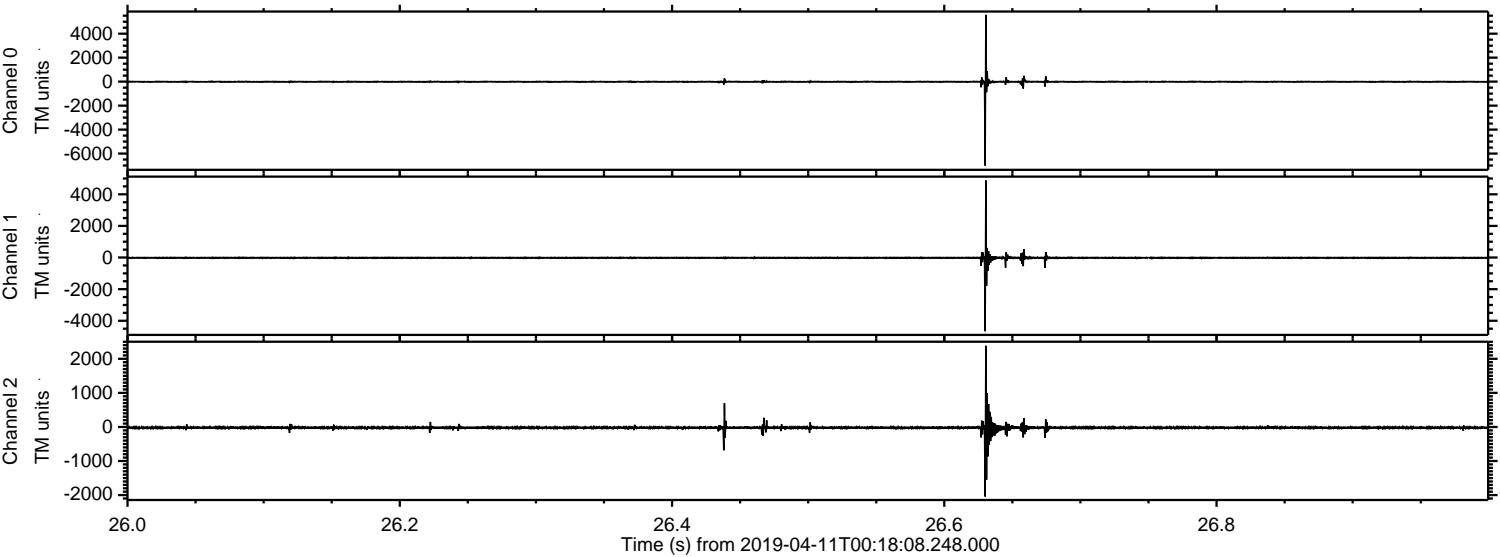
ELMAVAN 3D WAVEFORMS (Measured data sampled at 50 kHz) 51000 packets of 144 samples from 2019-04-11T00:18:08.248.000.

Processed Thu Apr 11 02:25:40 2019 by ELM ver.2012-10-06 from 001__elm20190411_001807__dat00.bin



ELMAVAN 3D WAVEFORMS (Measured data sampled at 50 kHz) 51000 packets of 144 samples from 2019-04-11T00:18:08.248.000. Part 27/147

Processed Thu Apr 11 02:25:49 2019 by ELM ver.2012-10-06 from 001__elm20190411_001807__dat00.bin

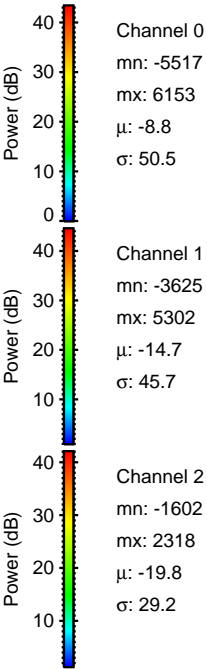
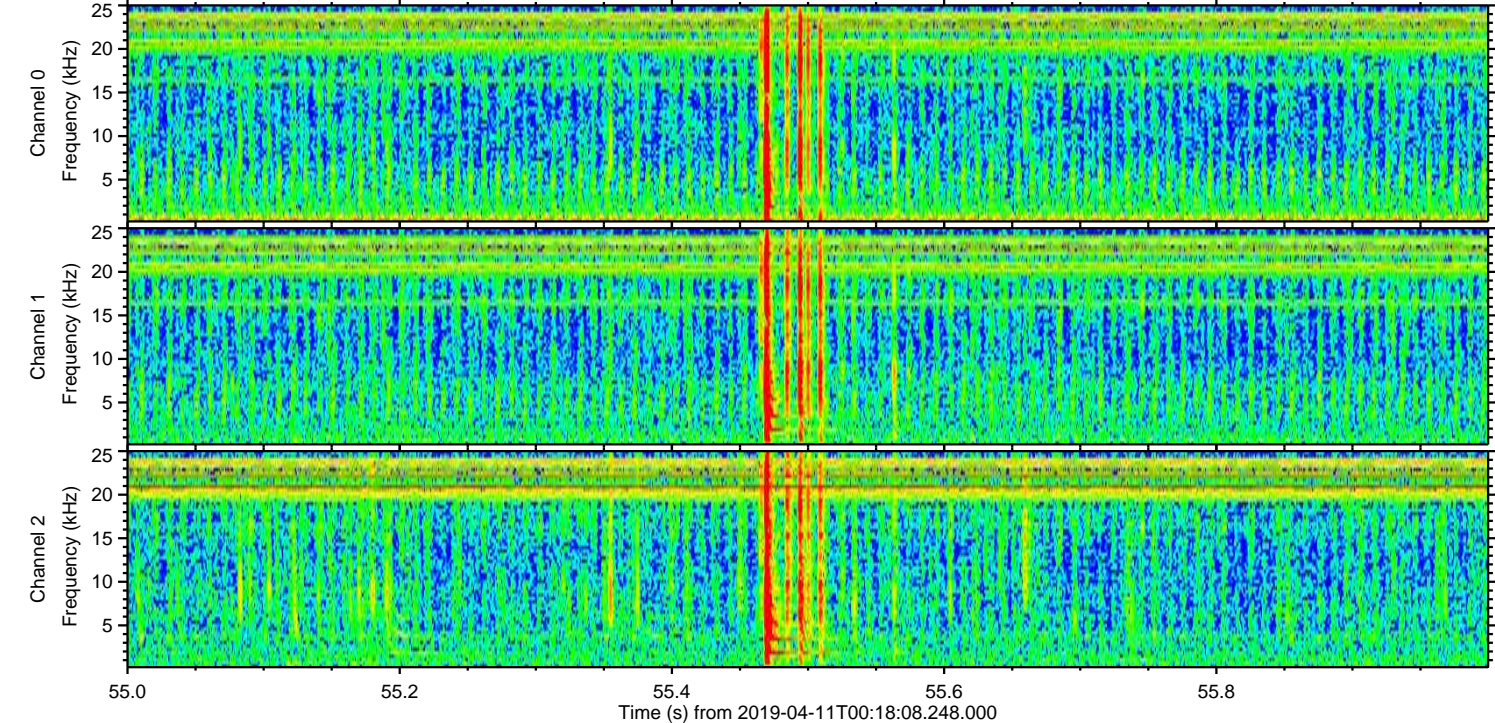
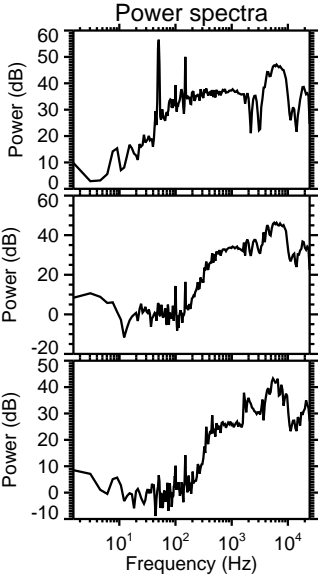
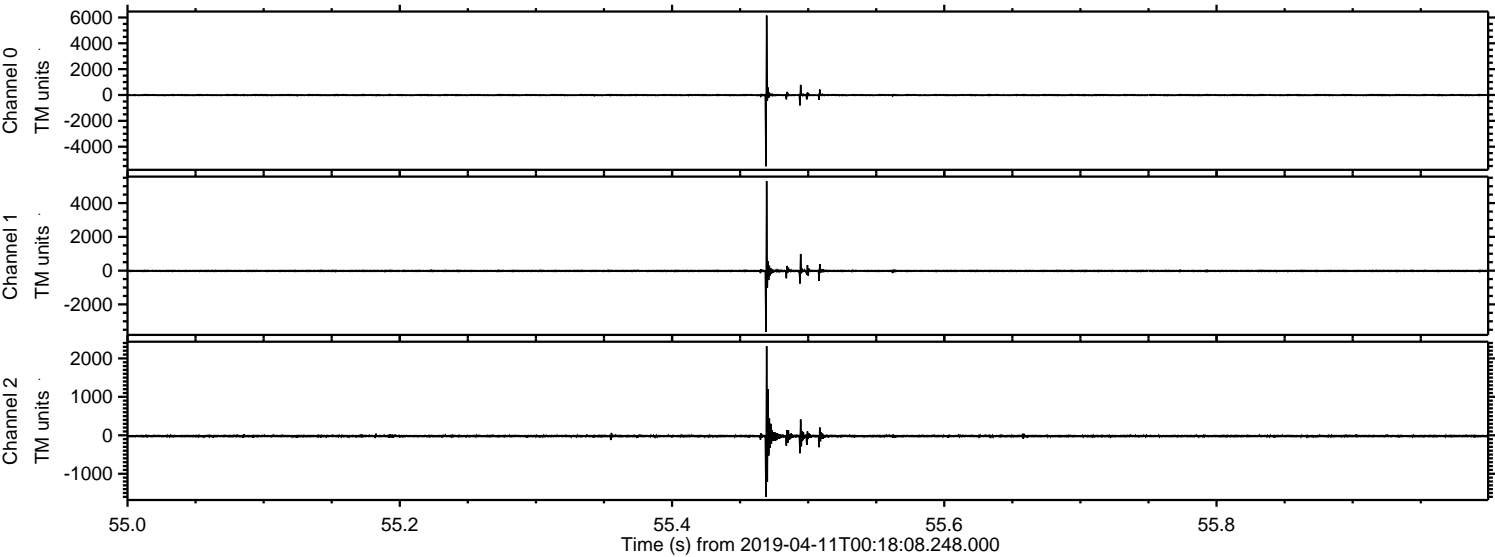


Channel 0
mn: -7006
mx: 5570
 μ : -8.7
 σ : 59.1

Channel 1
mn: -4661
mx: 4875
 μ : -14.8
 σ : 53.7

Channel 2
mn: -2042
mx: 2383
 μ : -19.8
 σ : 36.5

Processed Thu Apr 11 02:25:50 2019 by ELM ver.2012-10-06 from 001__elm20190411_001807__dat00.bin

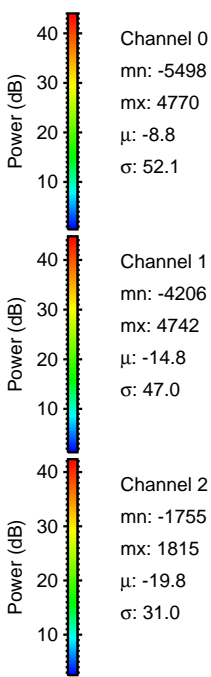
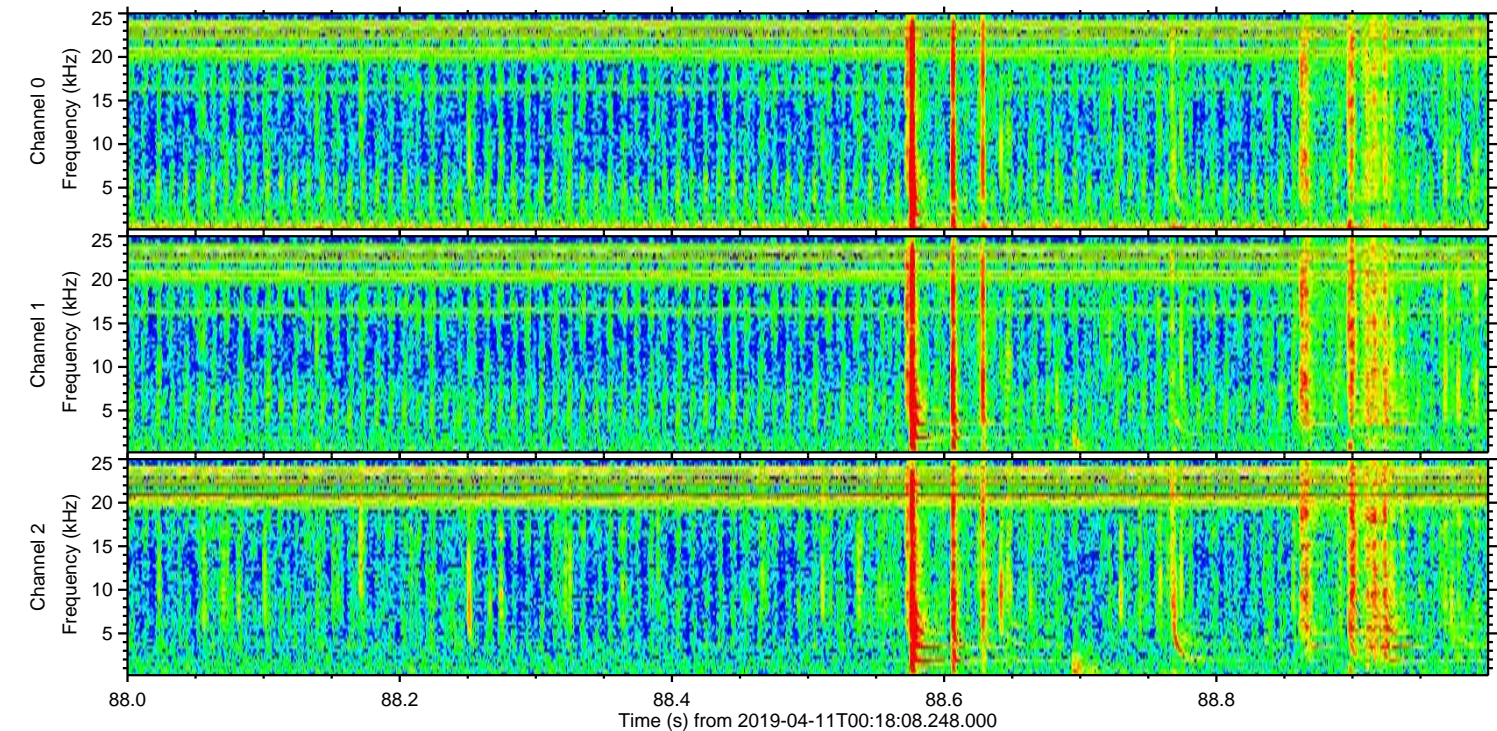
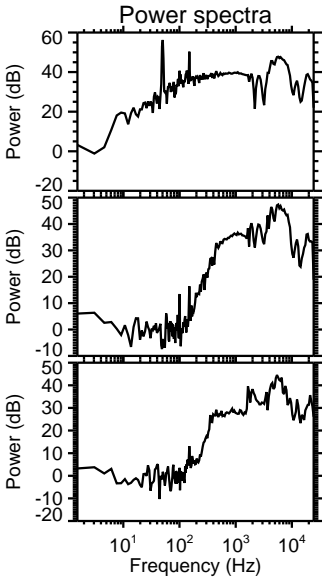
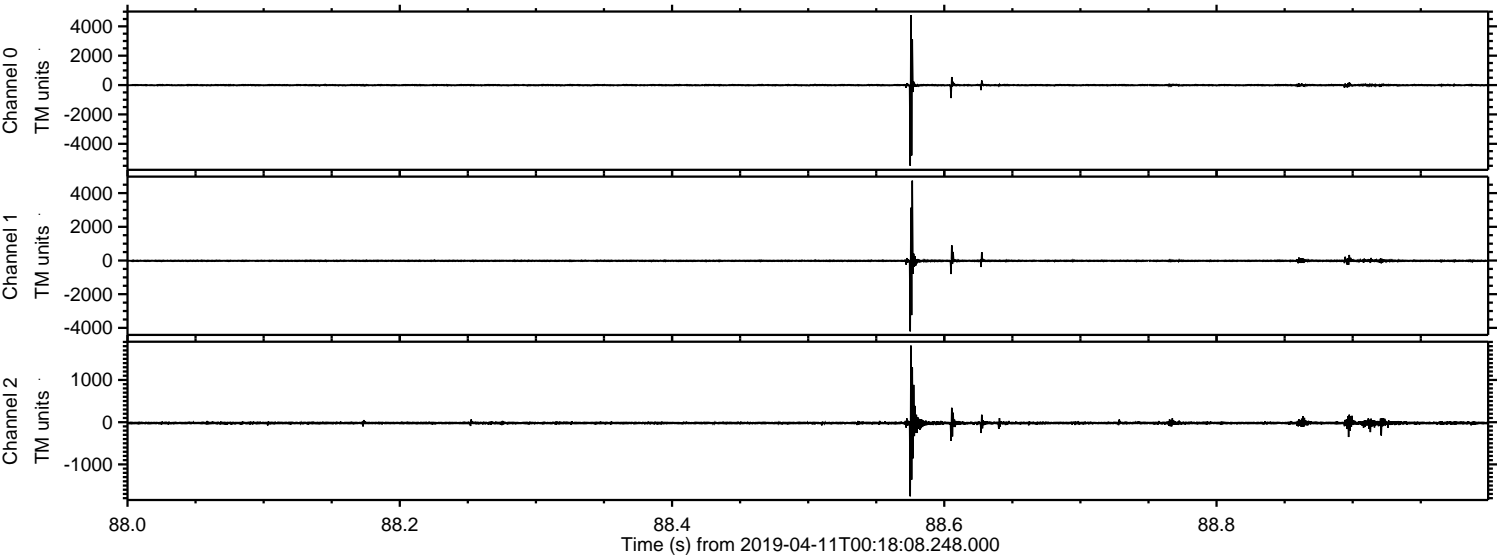


Channel 0
mn: -5517
mx: 6153
 μ : -8.8
 σ : 50.5

Channel 1
mn: -3625
mx: 5302
 μ : -14.7
 σ : 45.7

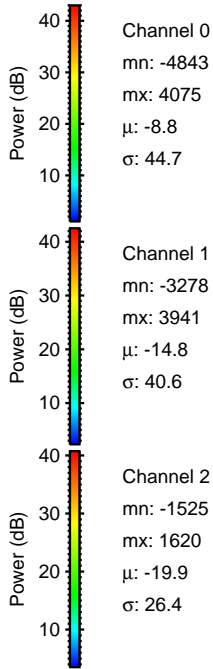
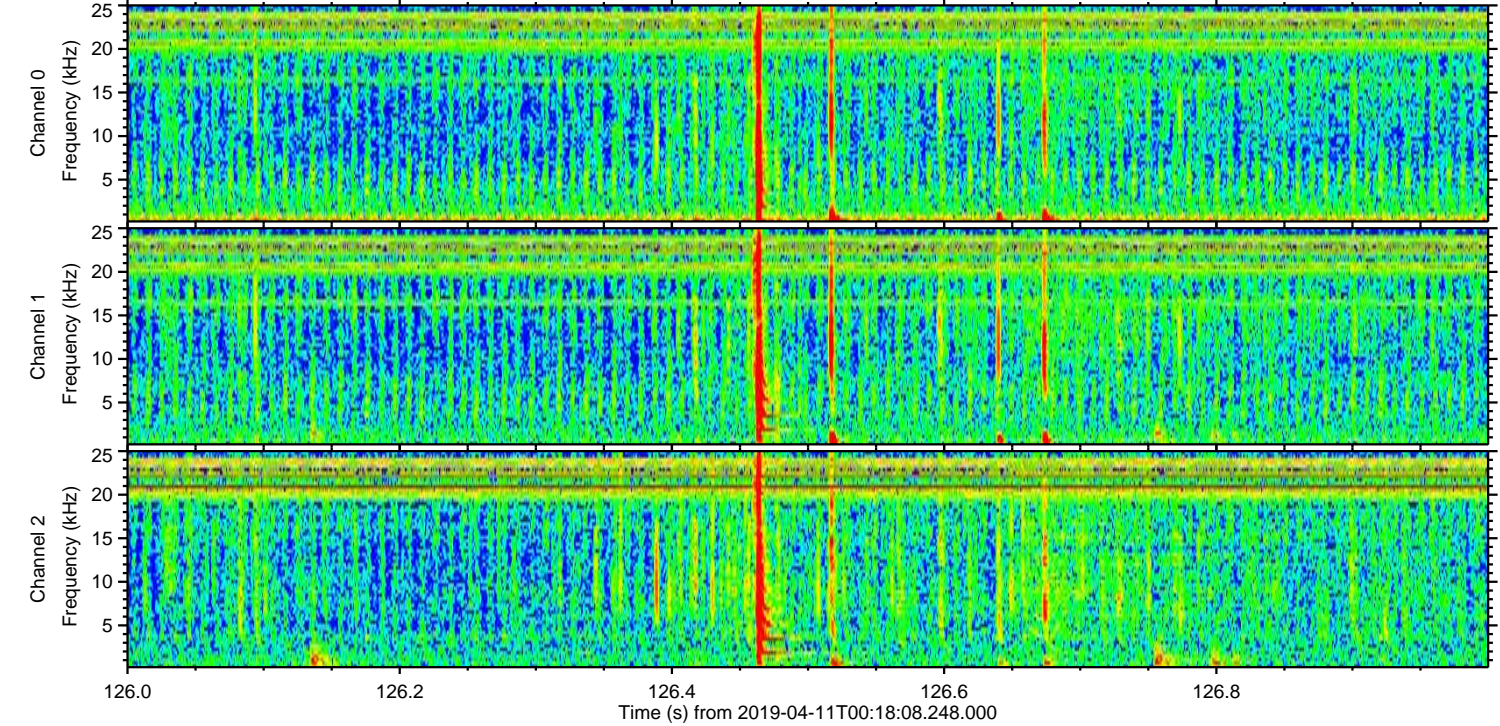
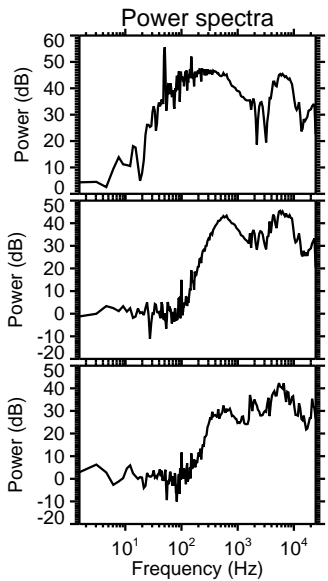
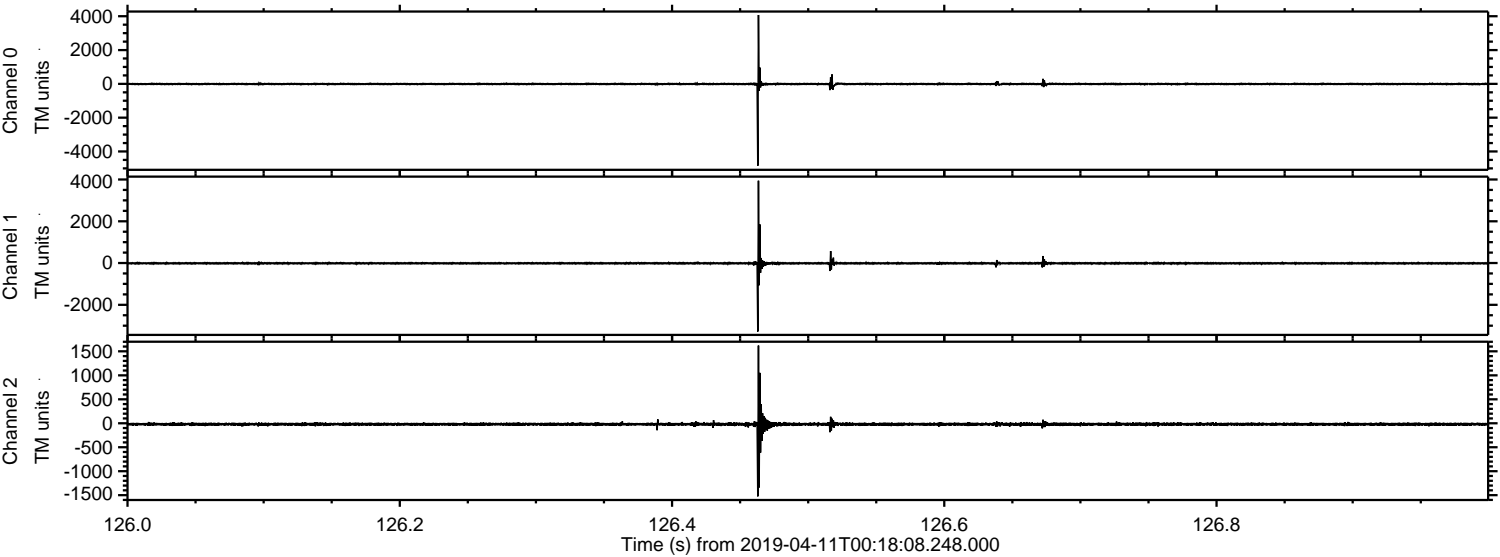
Channel 2
mn: -1602
mx: 2318
 μ : -19.8
 σ : 29.2

Processed Thu Apr 11 02:25:51 2019 by ELM ver.2012-10-06 from 001__elm20190411_001807__dat00.bin



ELMAVAN 3D WAVEFORMS (Measured data sampled at 50 kHz) 51000 packets of 144 samples from 2019-04-11T00:18:08.248.000. Part 127/147

Processed Thu Apr 11 02:25:52 2019 by ELM ver.2012-10-06 from 001__elm20190411_001807__dat00.bin



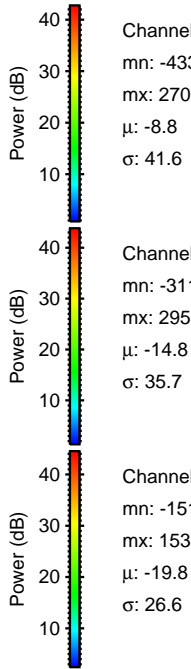
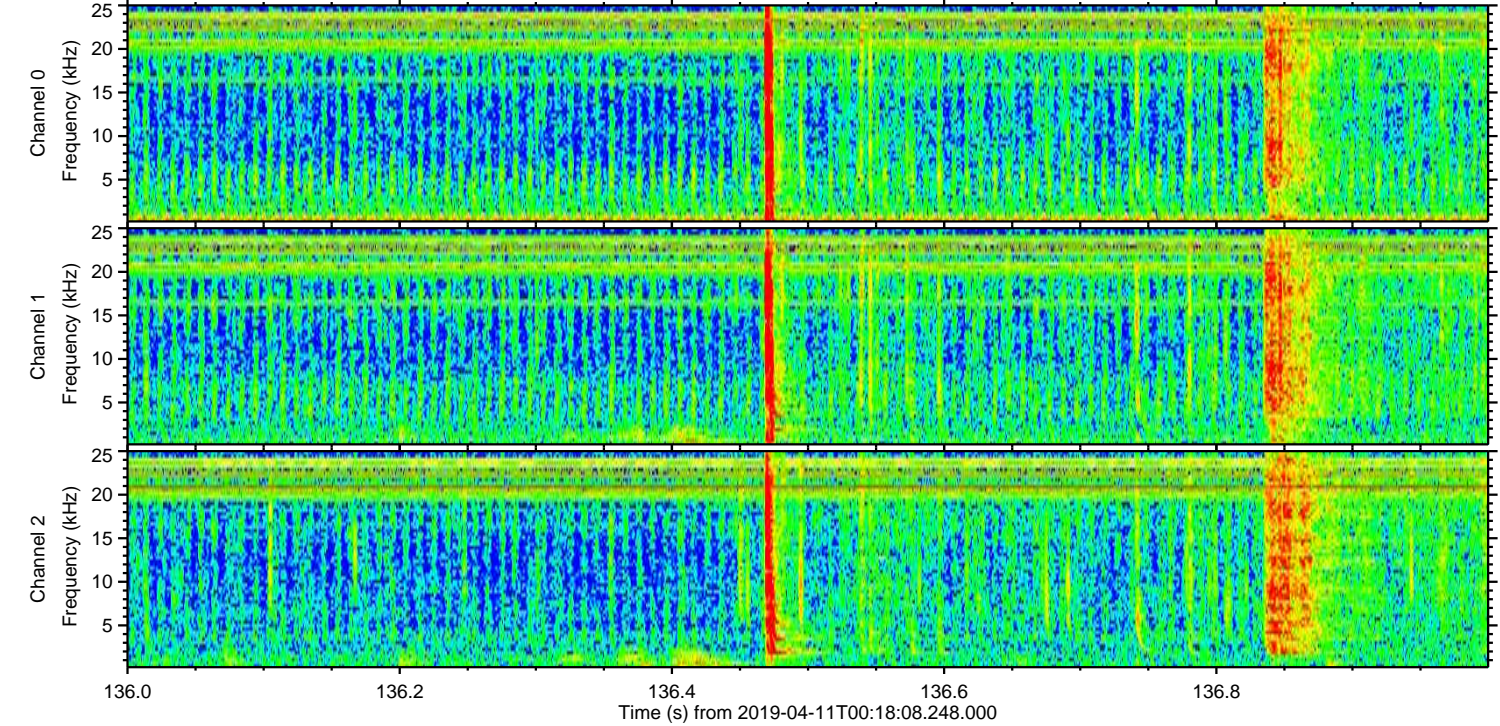
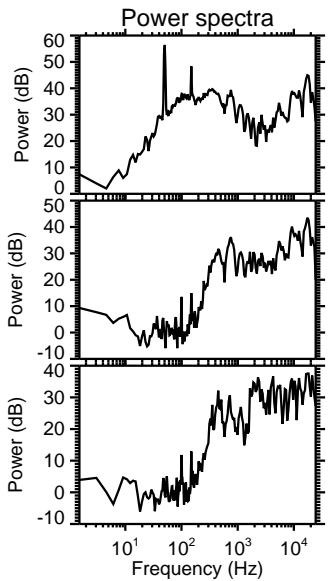
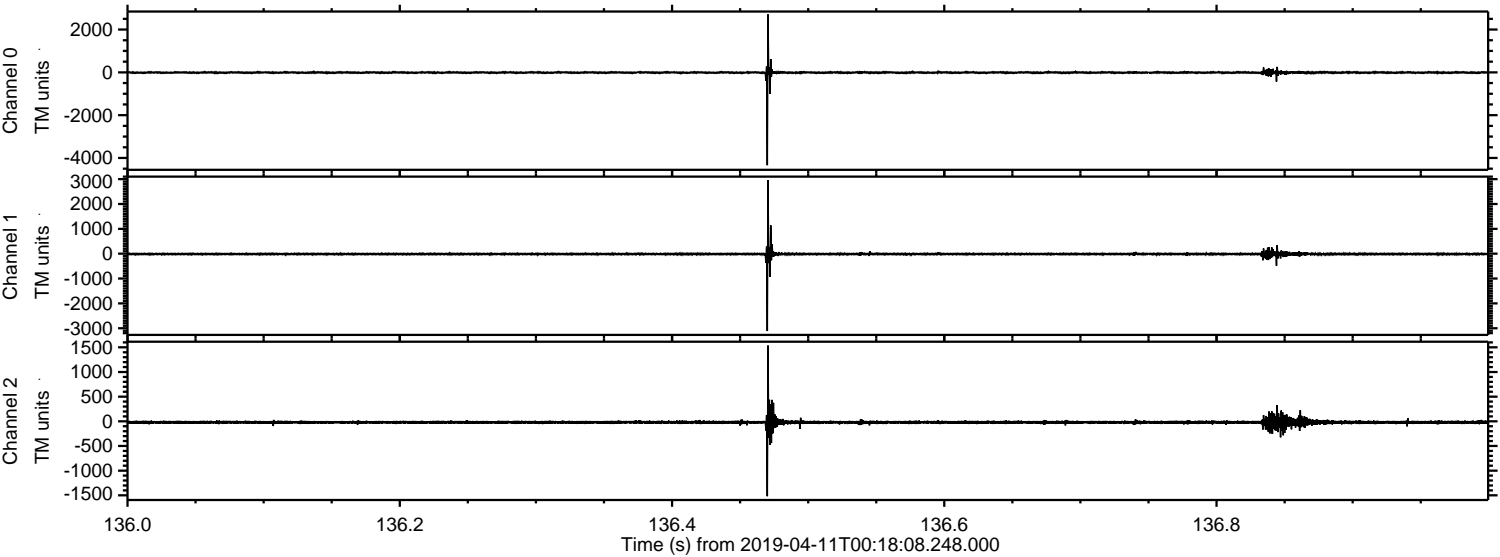
Channel 0
mn: -4843
mx: 4075
 μ : -8.8
 σ : 44.7

Channel 1
mn: -3278
mx: 3941
 μ : -14.8
 σ : 40.6

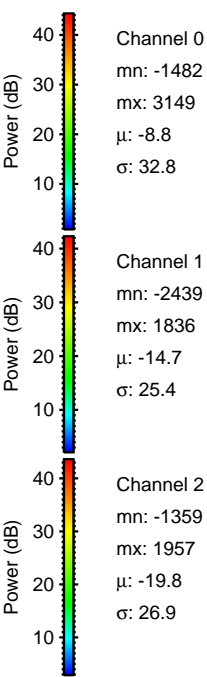
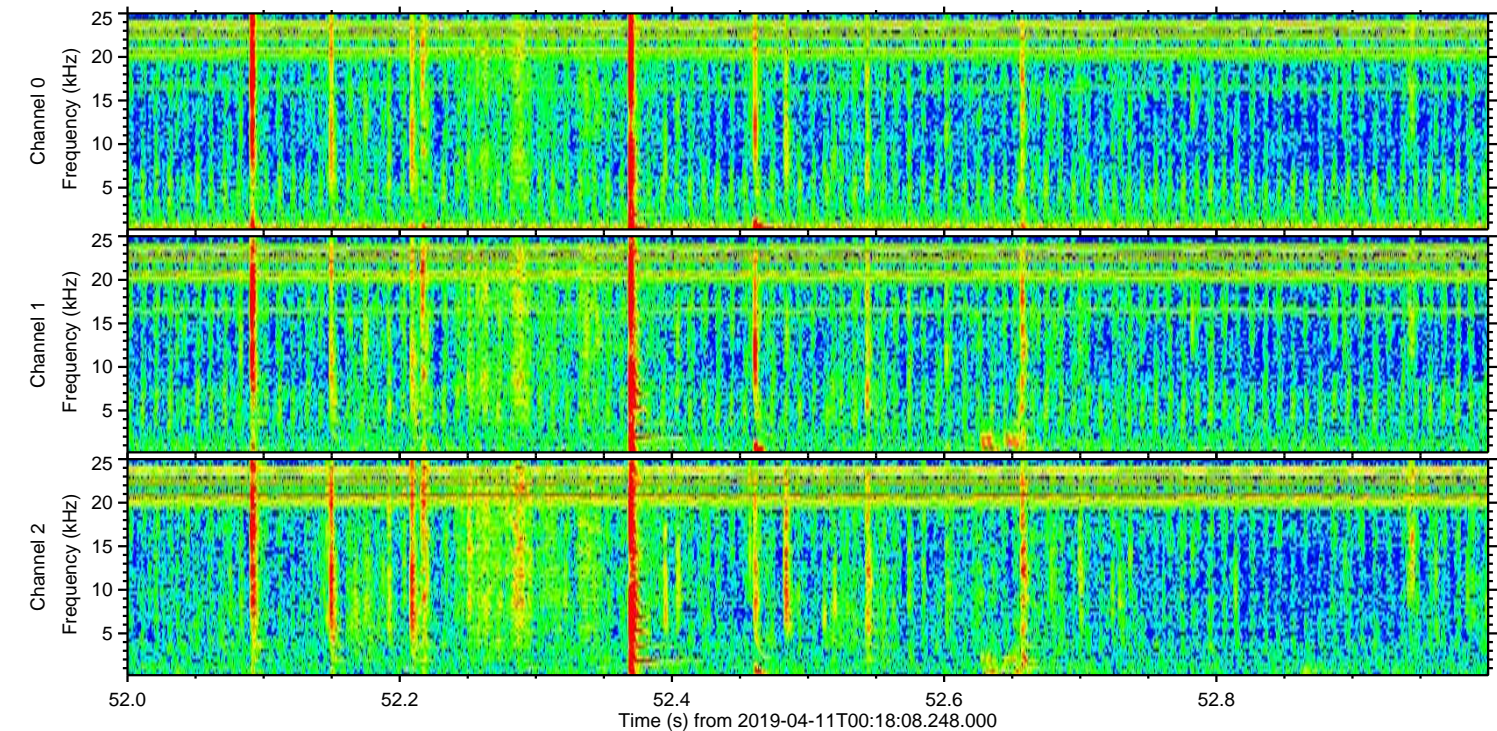
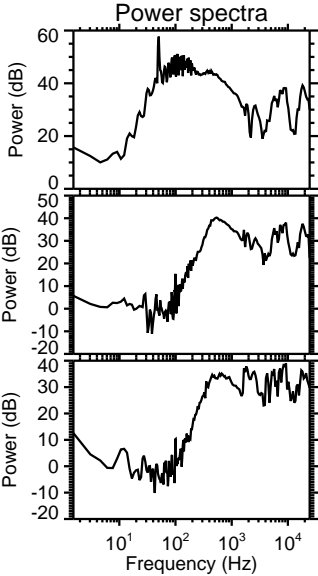
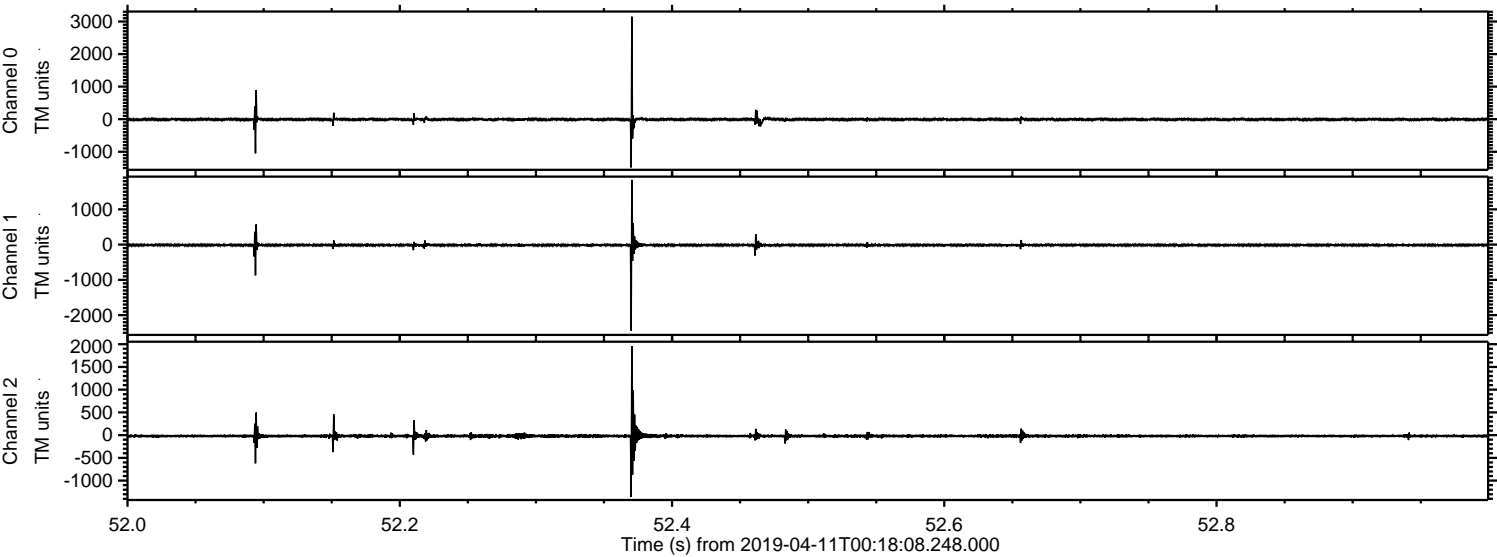
Channel 2
mn: -1525
mx: 1620
 μ : -19.9
 σ : 26.4

ELMAVAN 3D WAVEFORMS (Measured data sampled at 50 kHz) 51000 packets of 144 samples from 2019-04-11T00:18:08.248.000. Part 137/147

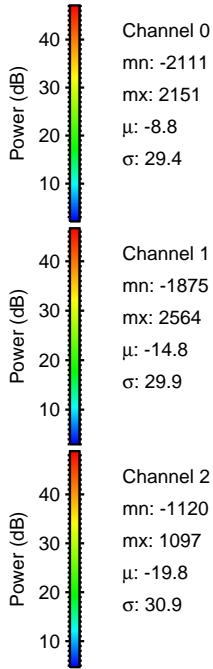
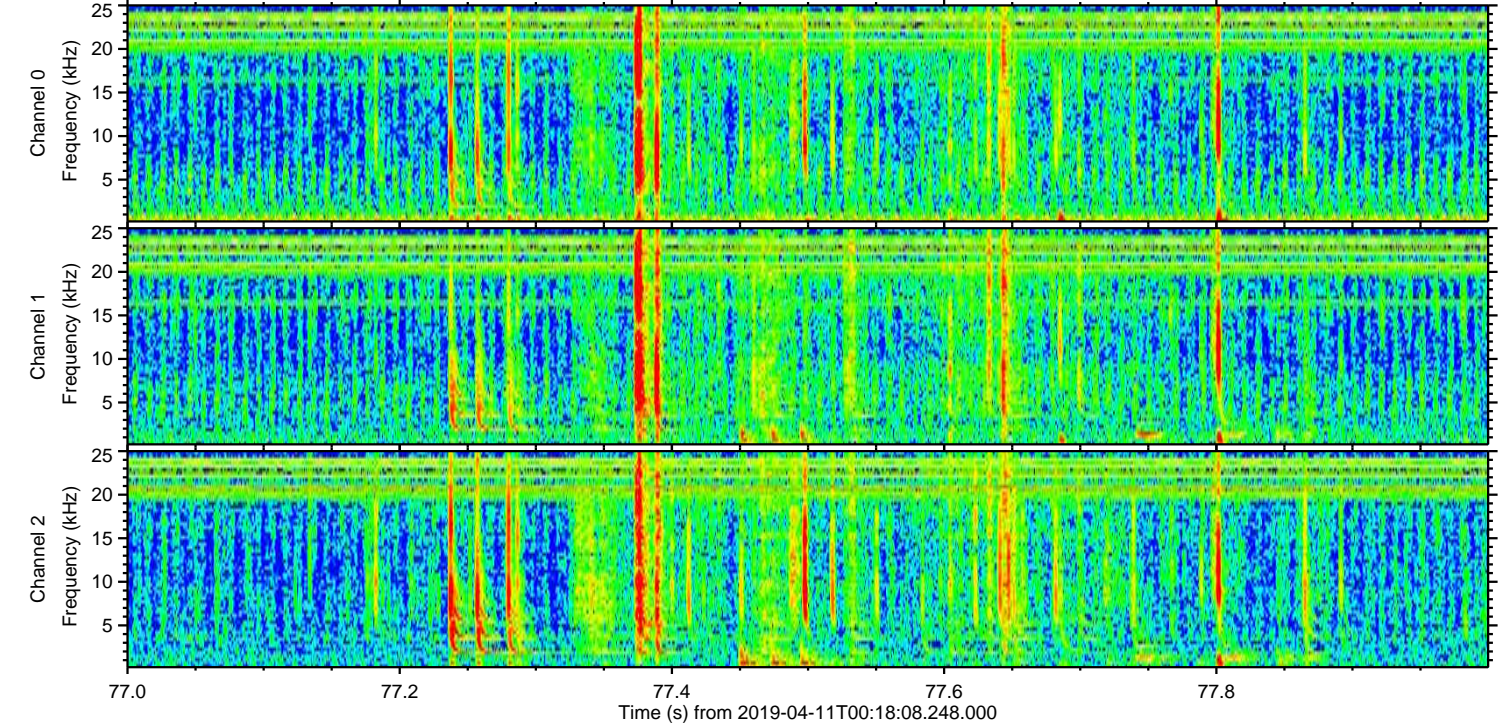
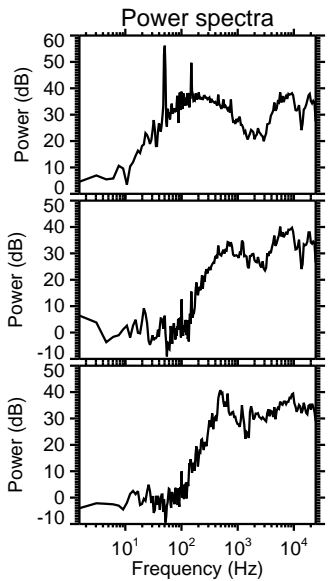
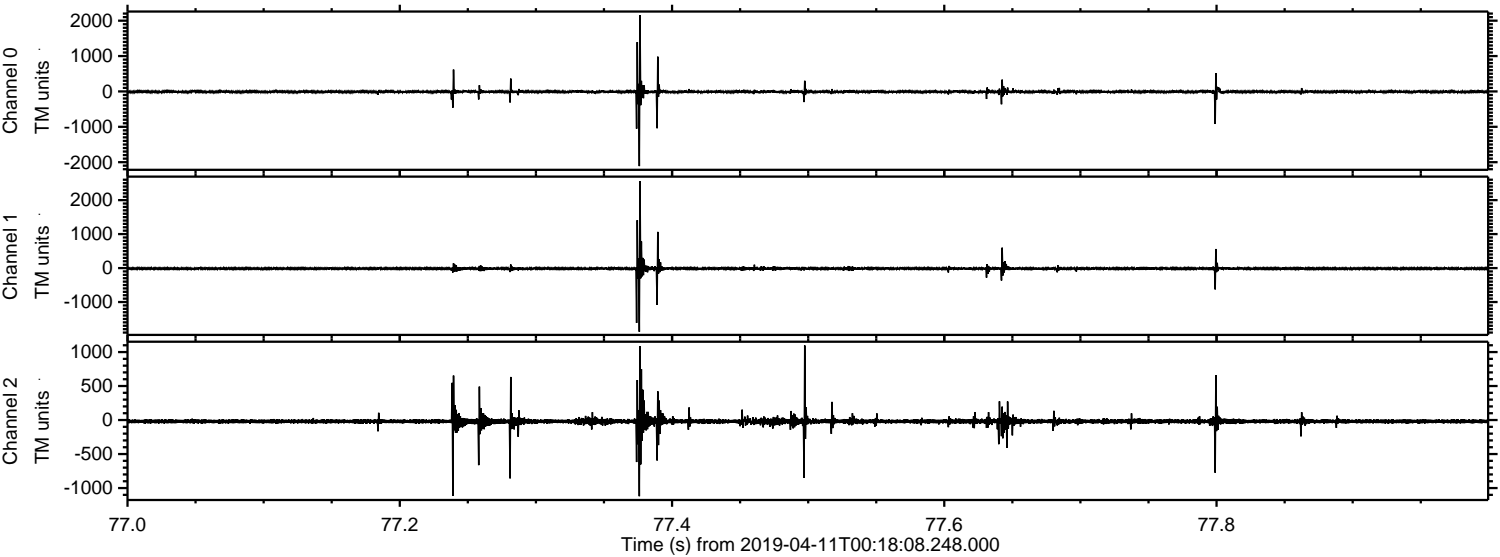
Processed Thu Apr 11 02:25:52 2019 by ELM ver.2012-10-06 from 001__elm20190411_001807__dat00.bin



Processed Thu Apr 11 02:25:53 2019 by ELM ver.2012-10-06 from 001__elm20190411_001807__dat00.bin



Processed Thu Apr 11 02:25:54 2019 by ELM ver.2012-10-06 from 001__elm20190411_001807__dat00.bin

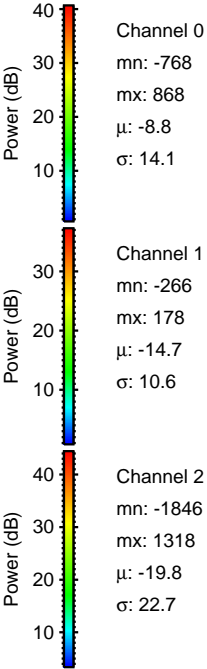
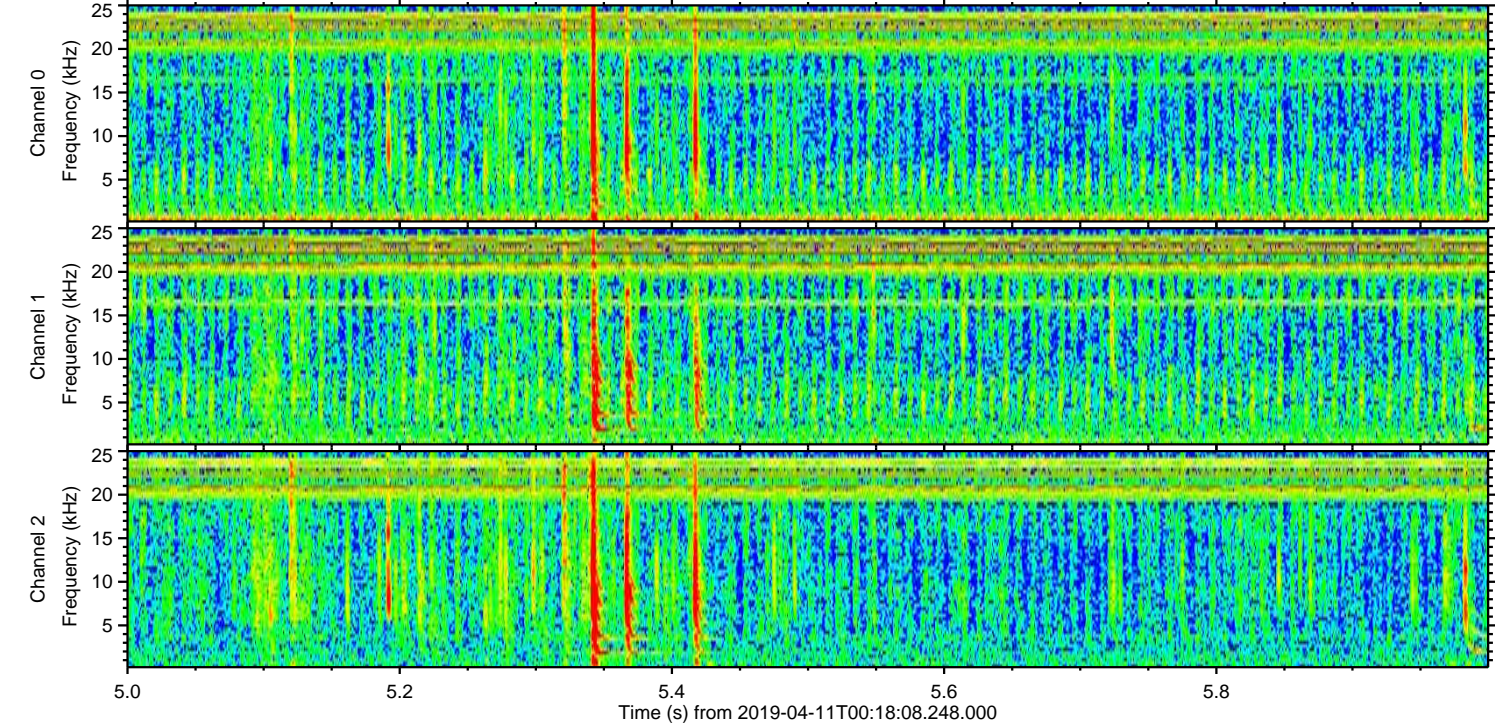
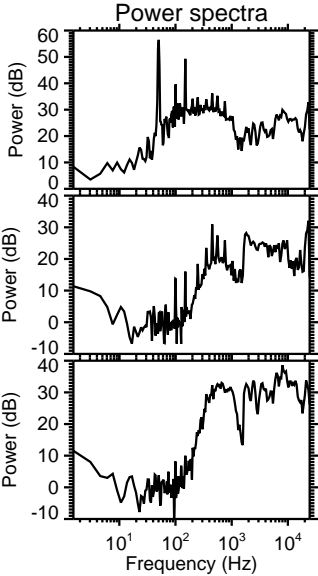
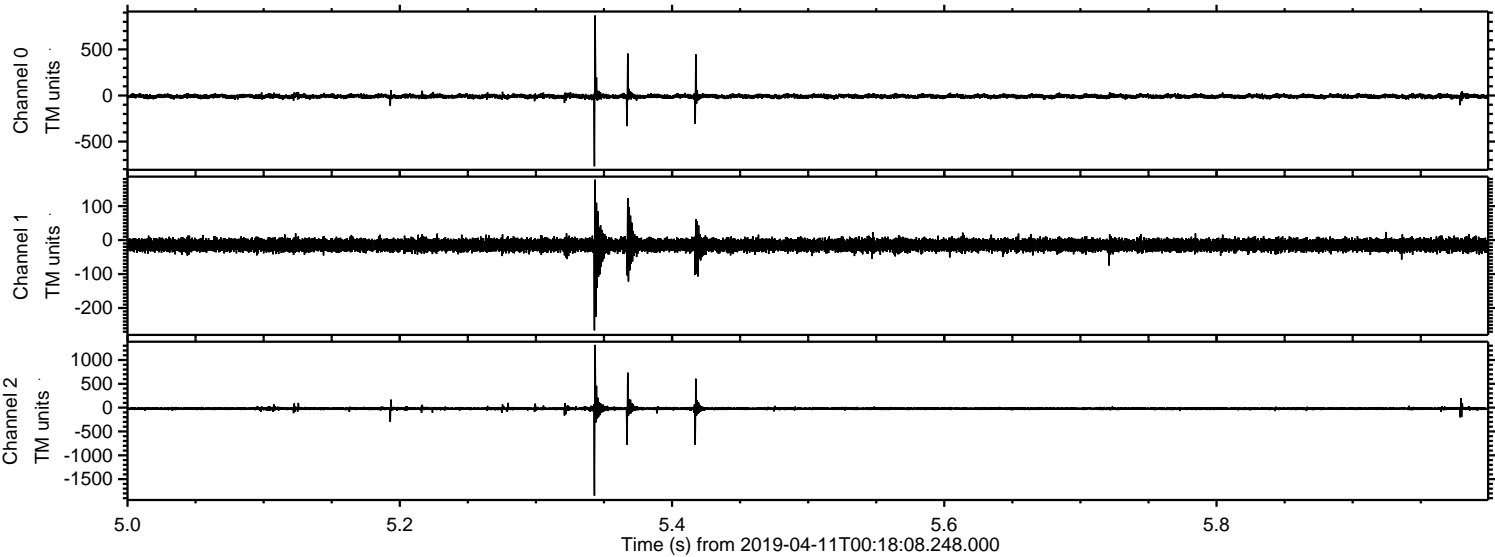


Channel 0
mn: -2111
mx: 2151
 μ : -8.8
 σ : 29.4

Channel 1
mn: -1875
mx: 2564
 μ : -14.8
 σ : 29.9

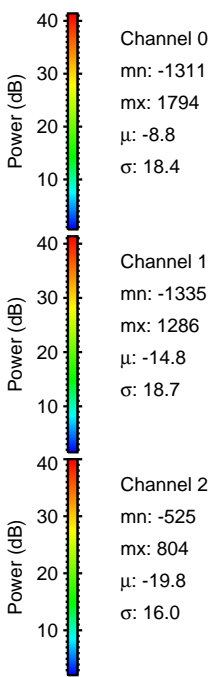
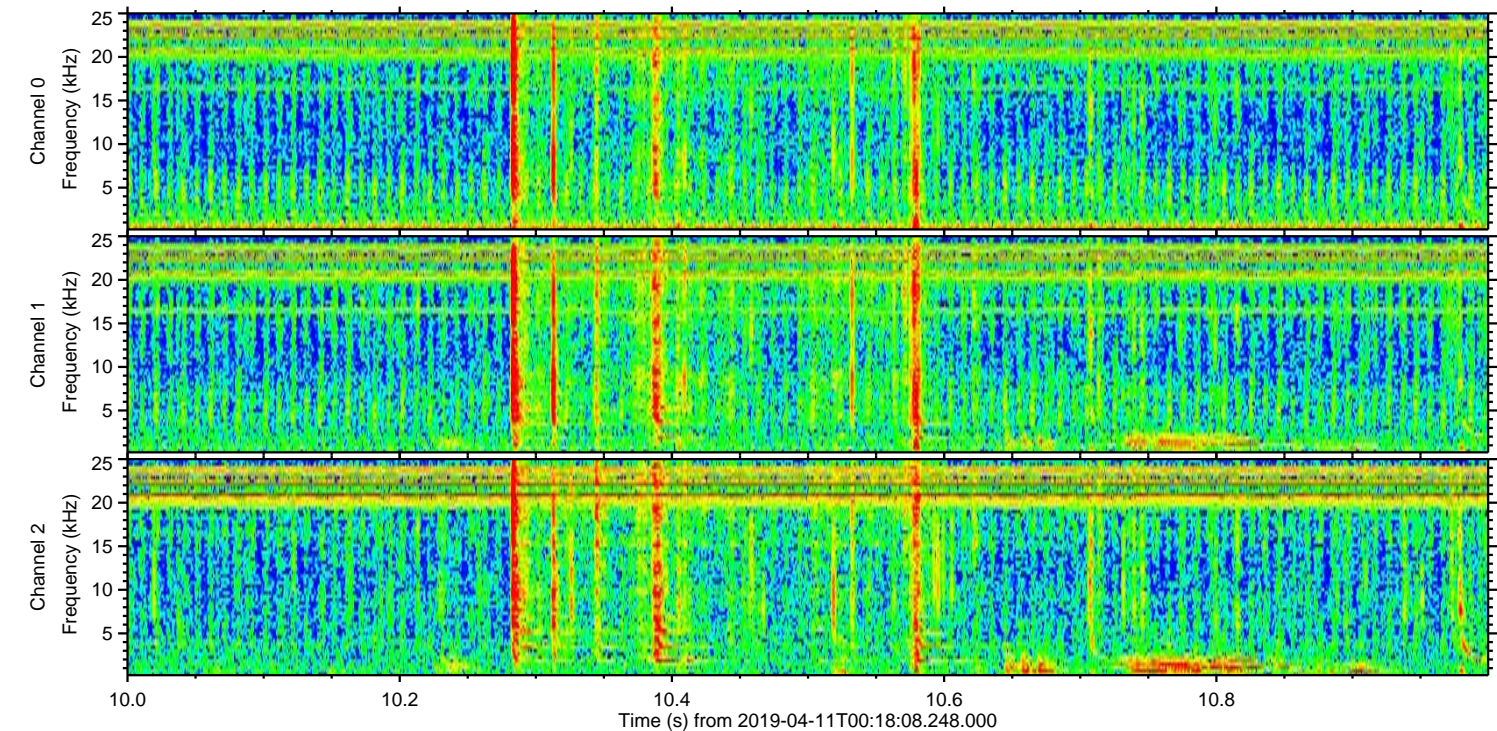
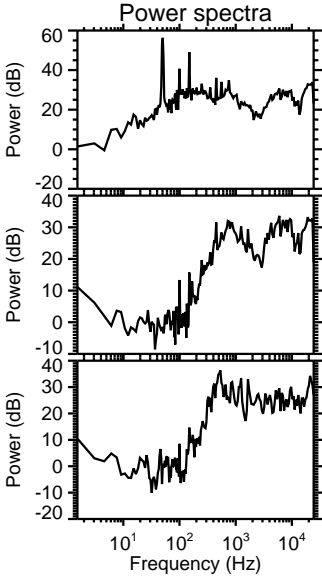
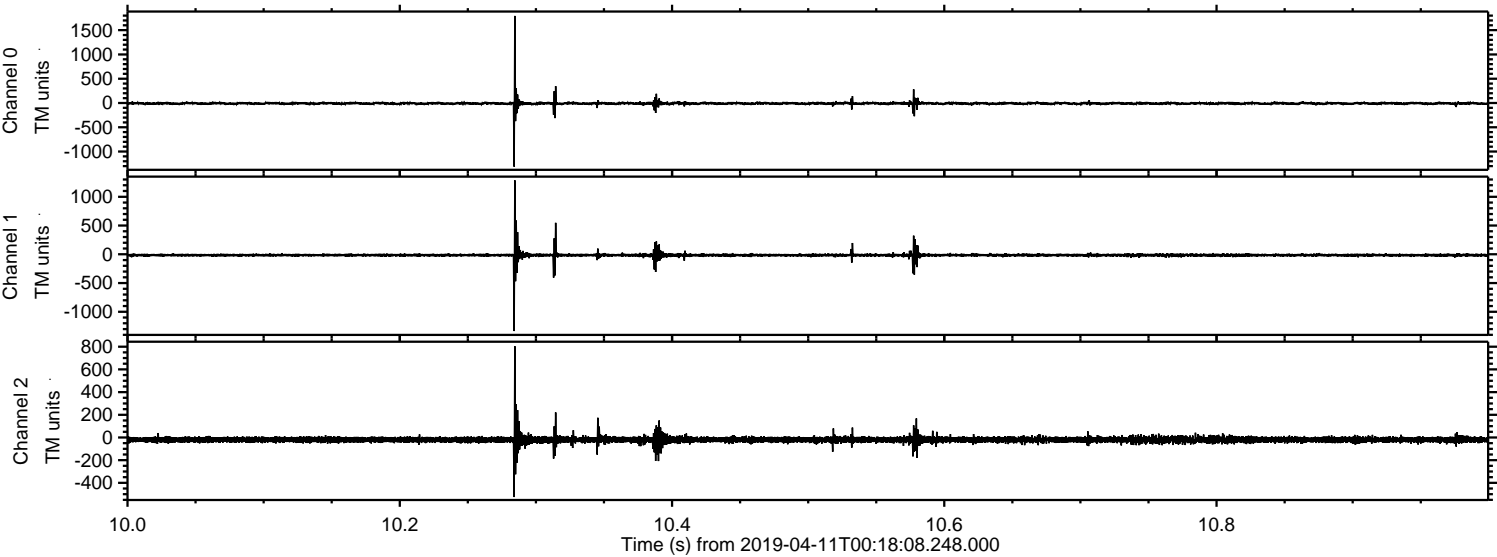
Channel 2
mn: -1120
mx: 1097
 μ : -19.8
 σ : 30.9

Processed Thu Apr 11 02:25:54 2019 by ELM ver.2012-10-06 from 001__elm20190411_001807__dat00.bin



ELMAVAN 3D WAVEFORMS (Measured data sampled at 50 kHz) 51000 packets of 144 samples from 2019-04-11T00:18:08.248.000. Part 11/147

Processed Thu Apr 11 02:25:55 2019 by ELM ver.2012-10-06 from 001__elm20190411_001807__dat00.bin



ELMAVAN 3D WAVEFORMS (Measured data sampled at 50 kHz) 51000 packets of 144 samples from 2019-04-11T00:18:08.248.000. Part 122/147

