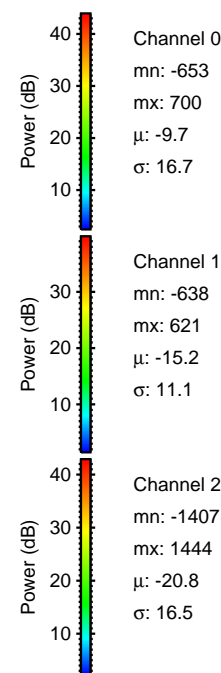
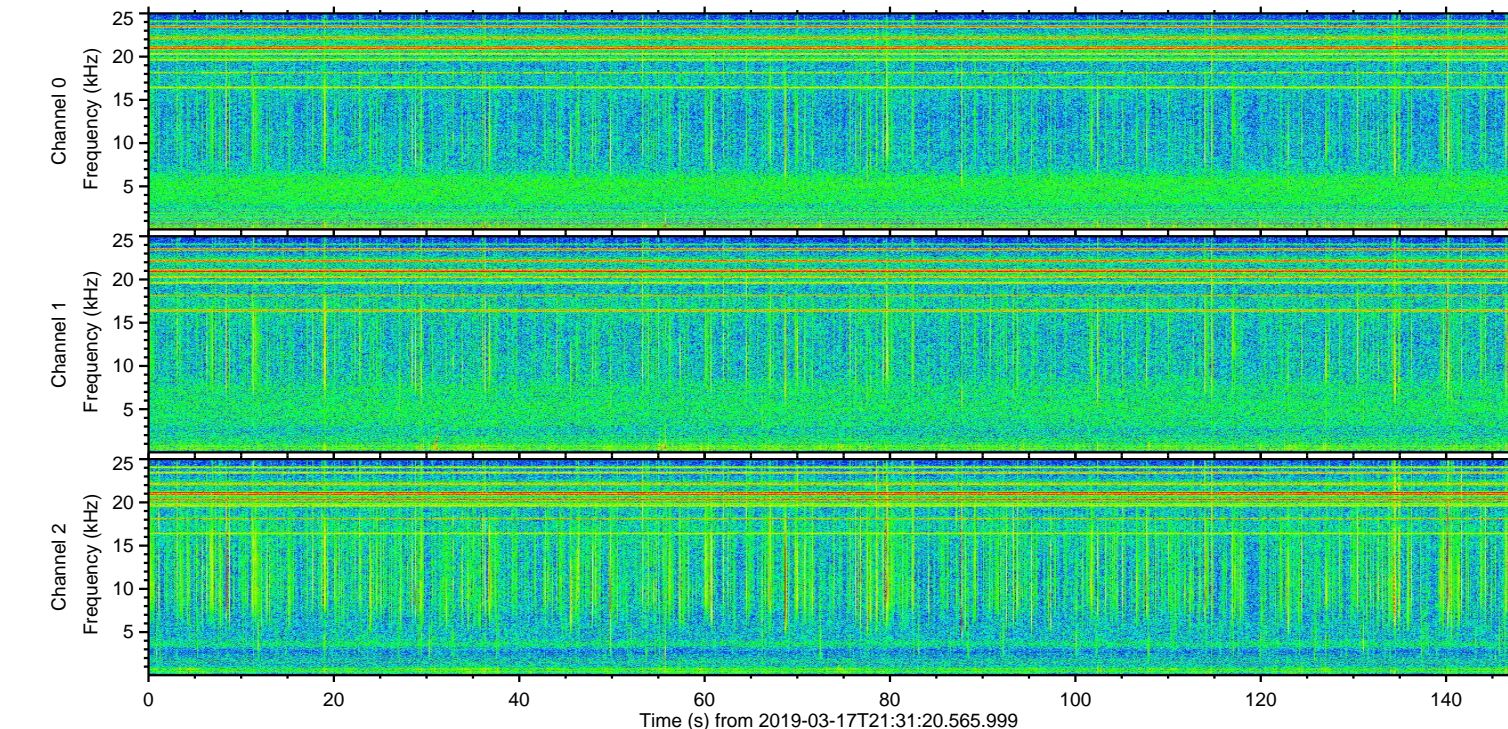
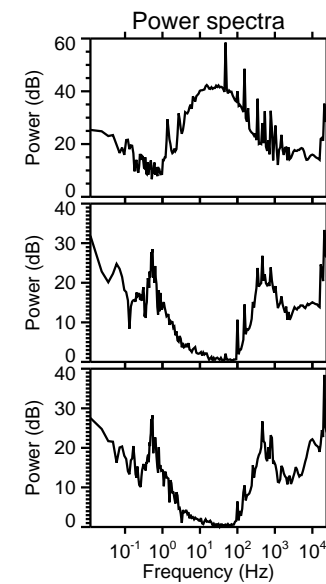
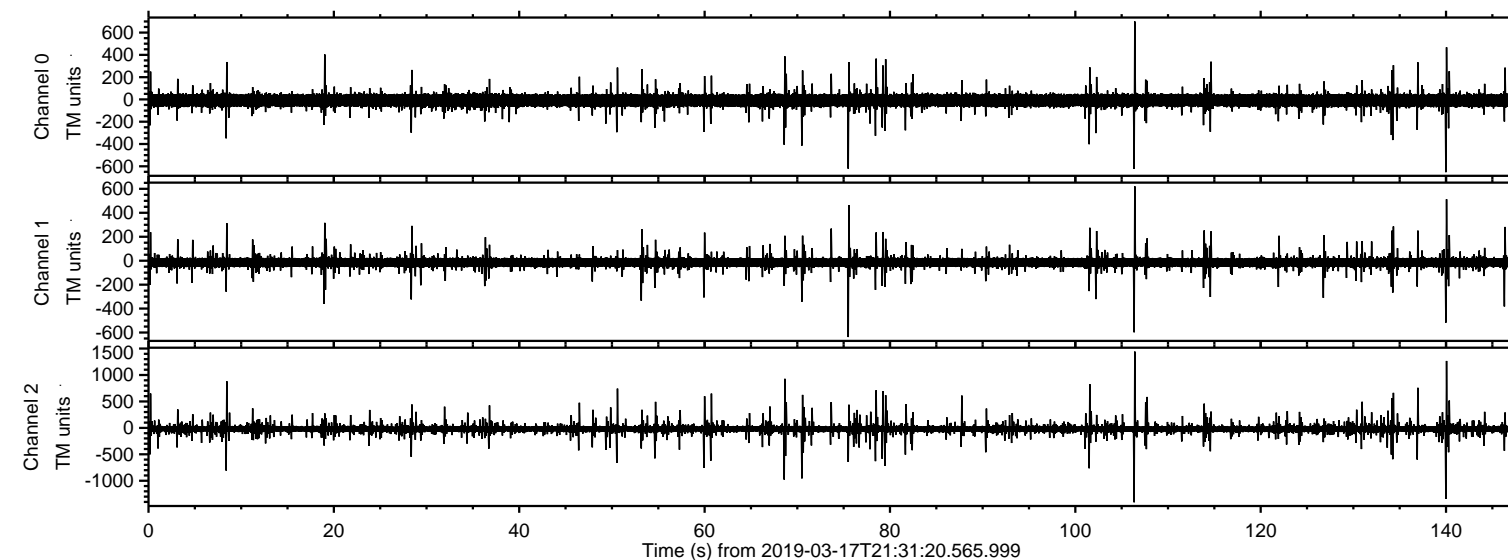


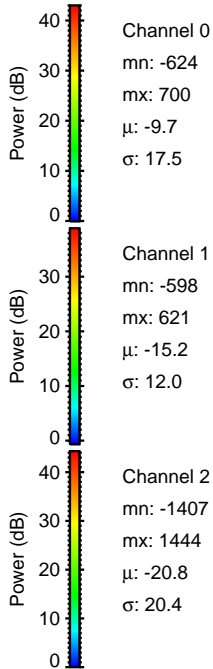
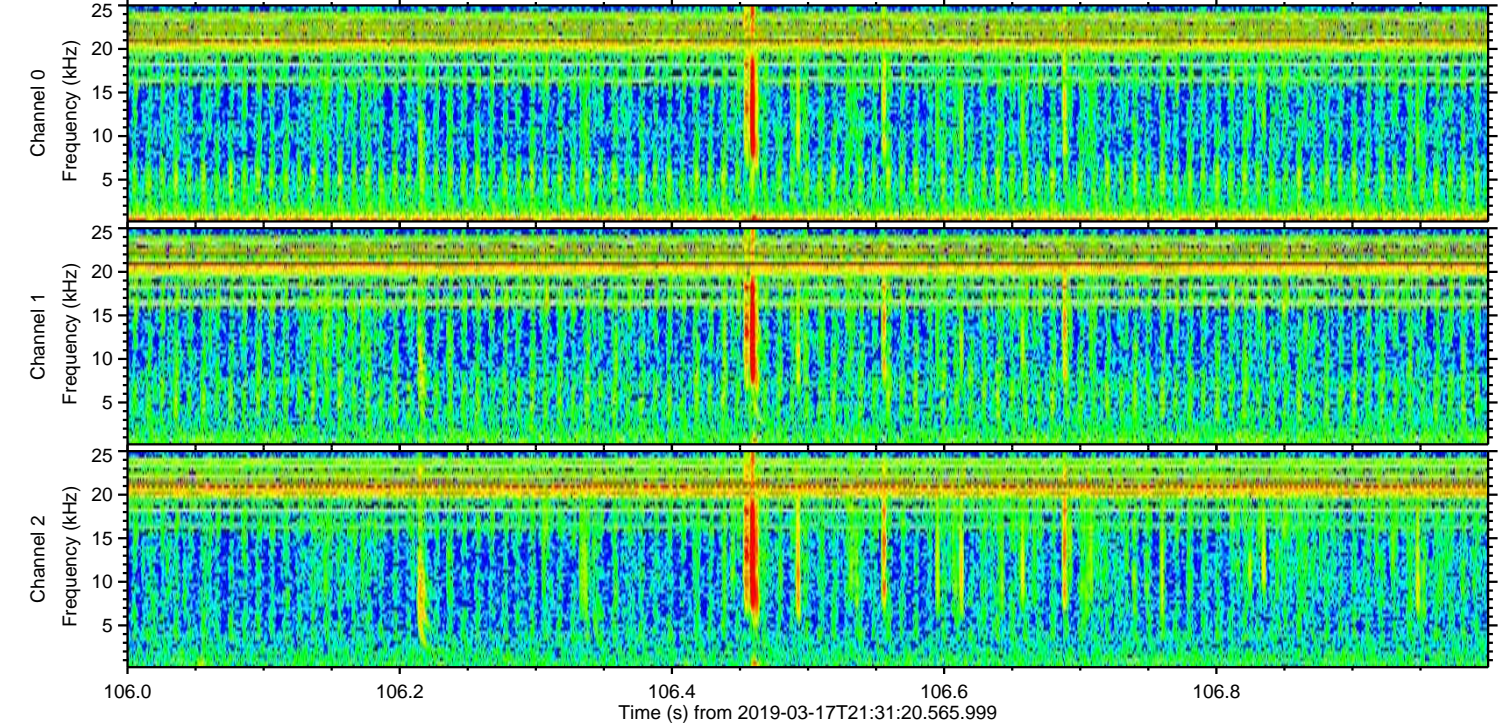
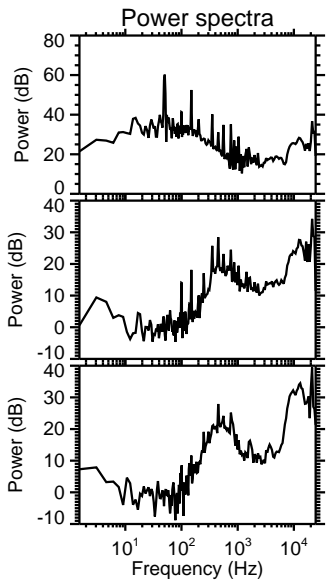
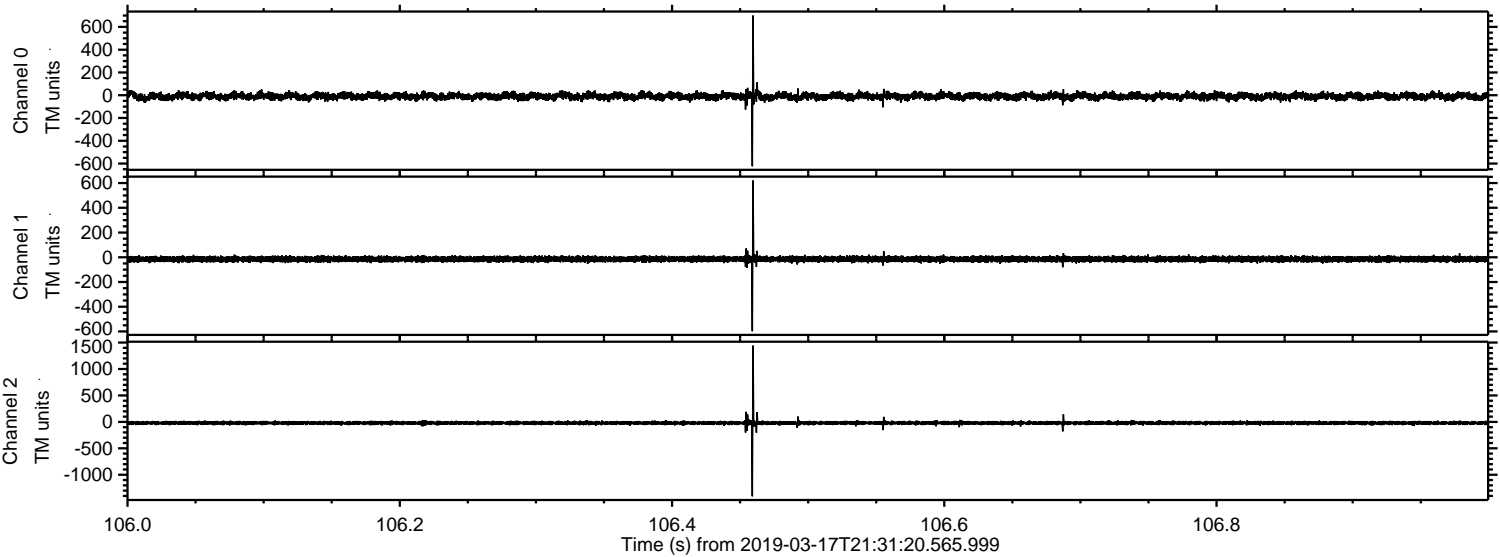
ELMAVAN 3D WAVEFORMS (Measured data sampled at 50 kHz) 51000 packets of 144 samples from 2019-03-17T21:31:20.565.999.

Processed Sun Mar 17 22:39:38 2019 by ELM ver.2012-10-06 from 001__elm20190317_213119__dat00.bin



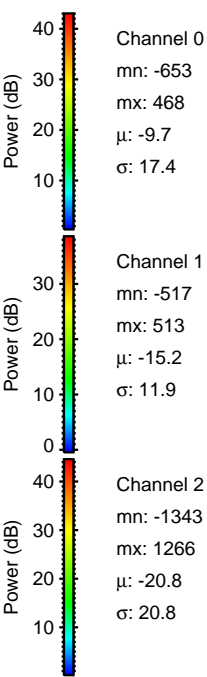
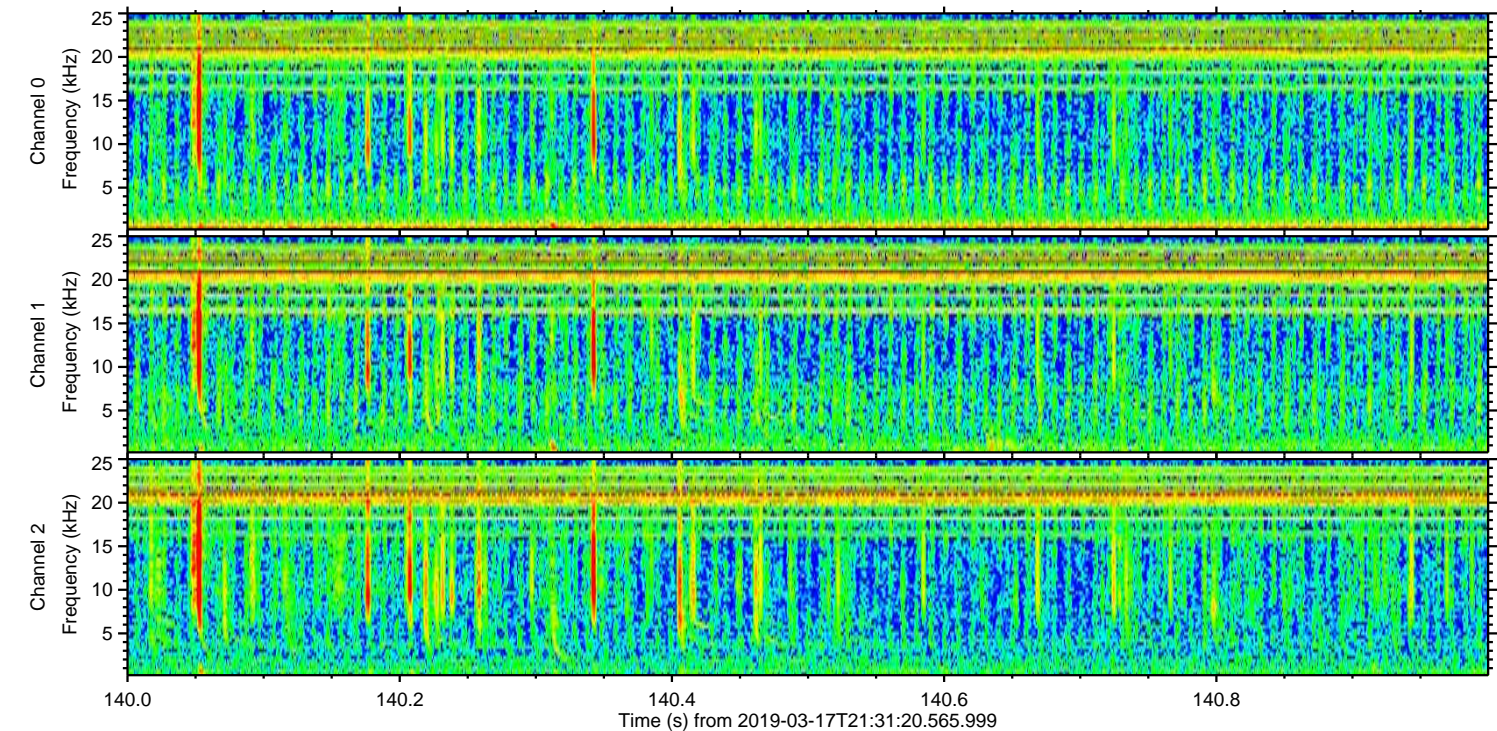
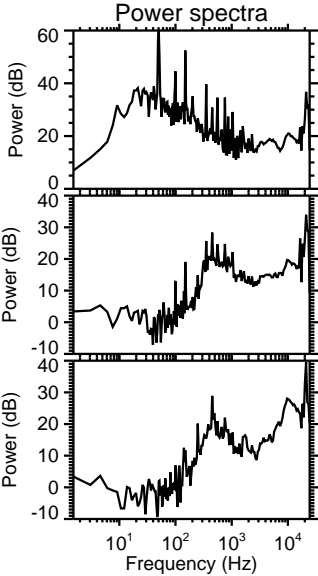
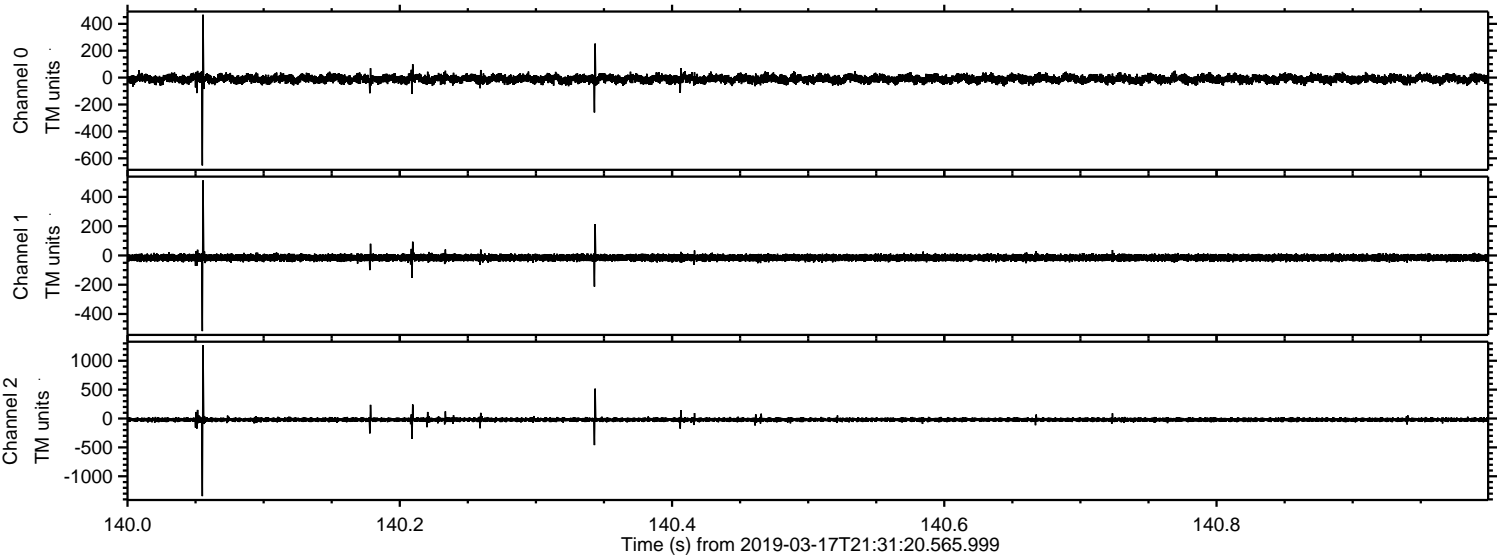
ELMAVAN 3D WAVEFORMS (Measured data sampled at 50 kHz) 51000 packets of 144 samples from 2019-03-17T21:31:20.565.999. Part 107/147

Processed Sun Mar 17 22:39:47 2019 by ELM ver.2012-10-06 from 001__elm20190317_213119__dat00.bin

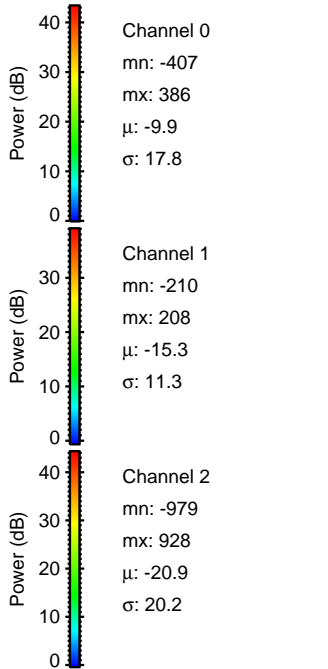
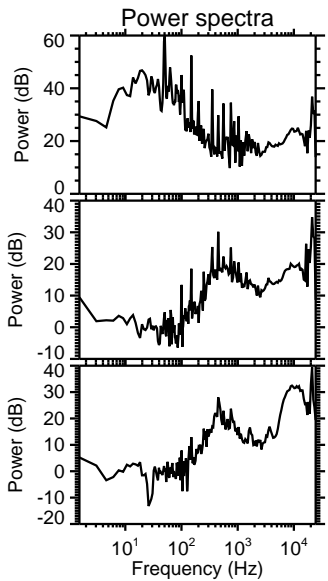
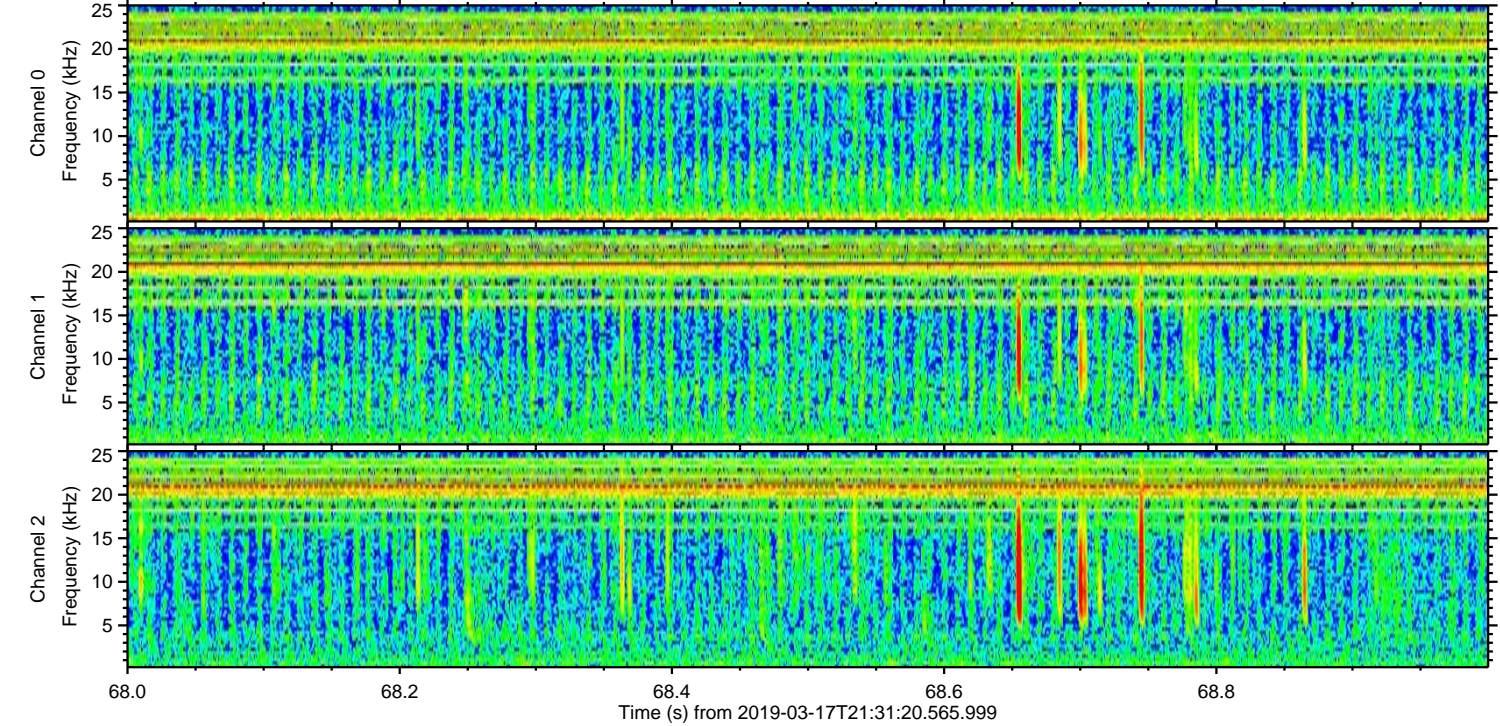
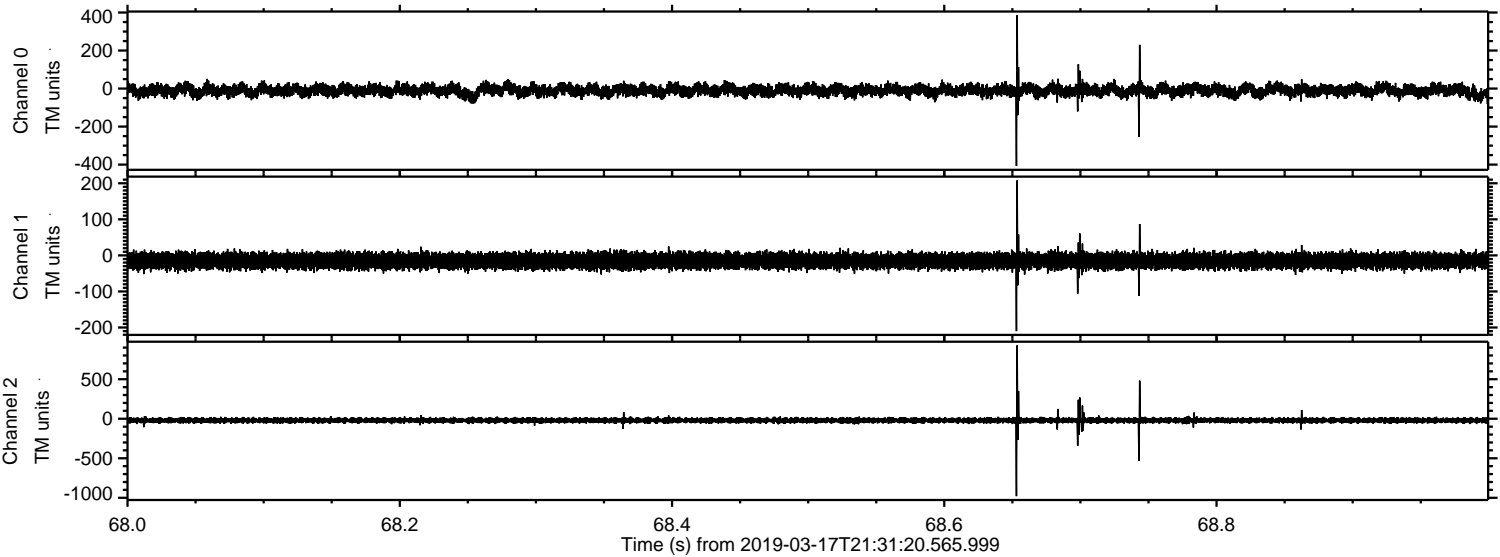


ELMAVAN 3D WAVEFORMS (Measured data sampled at 50 kHz) 51000 packets of 144 samples from 2019-03-17T21:31:20.565.999. Part 141/147

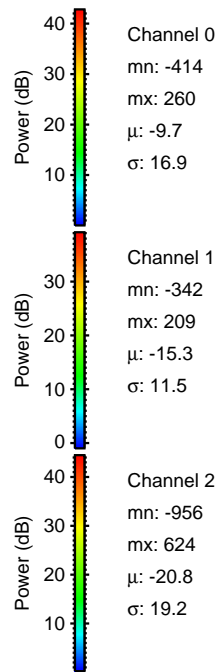
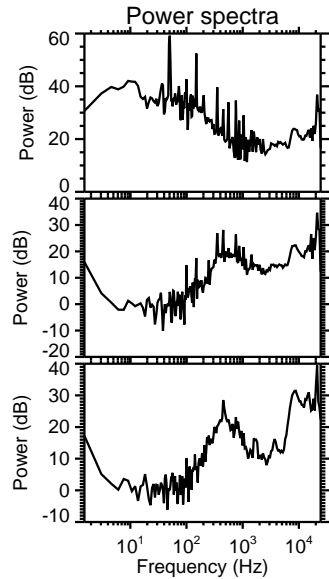
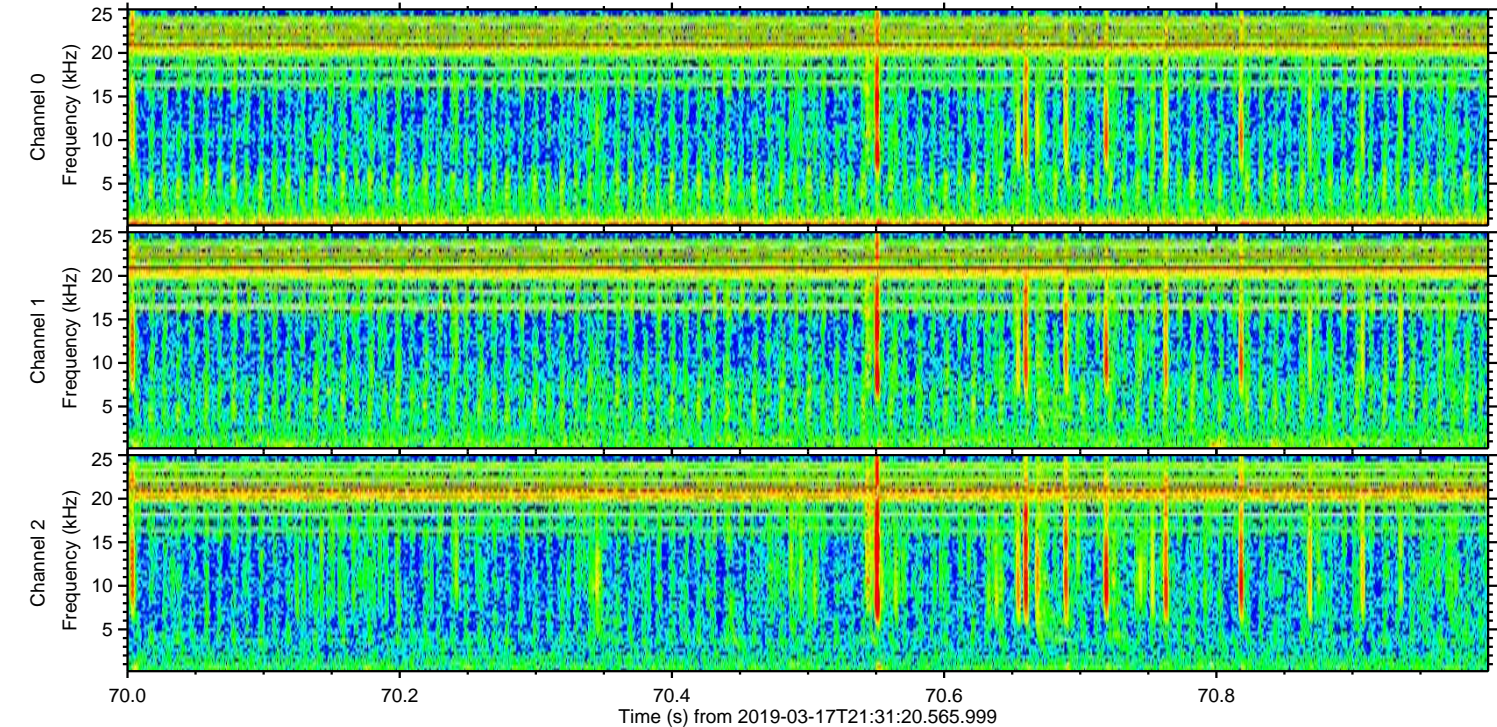
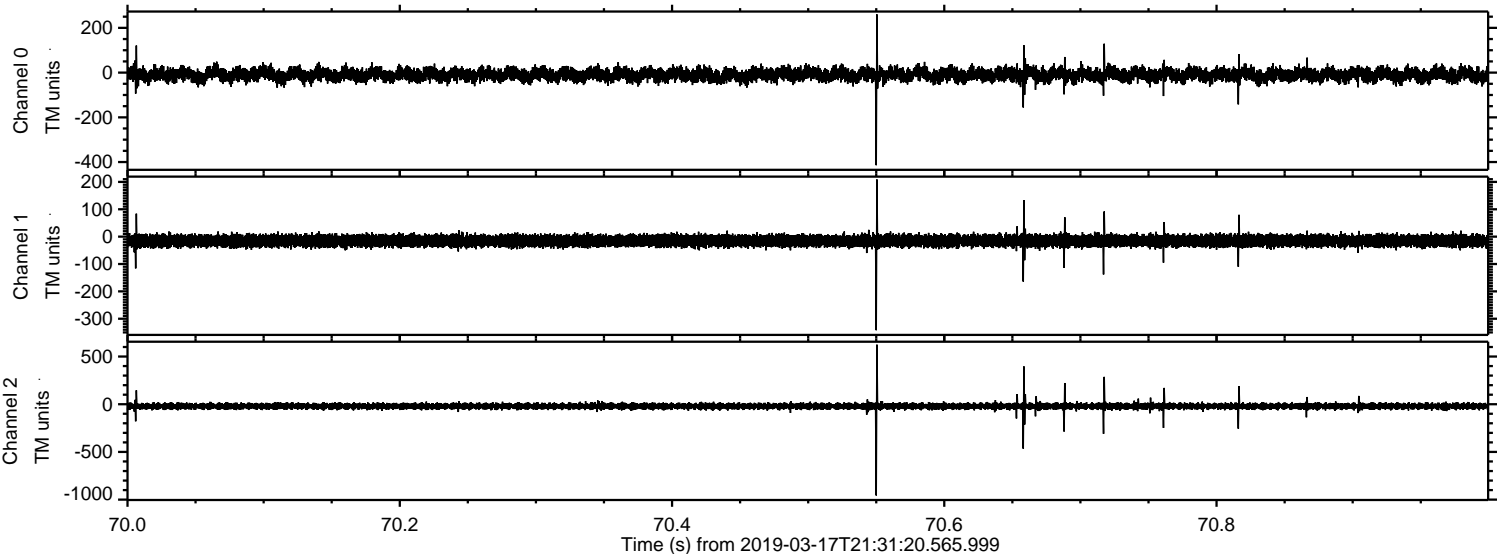
Processed Sun Mar 17 22:39:48 2019 by ELM ver.2012-10-06 from 001__elm20190317_213119__dat00.bin



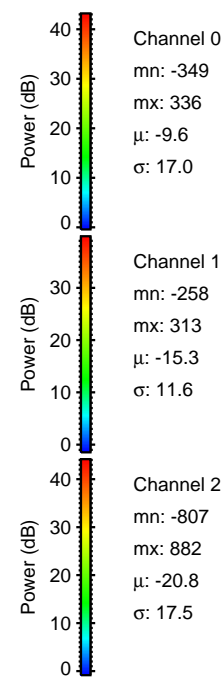
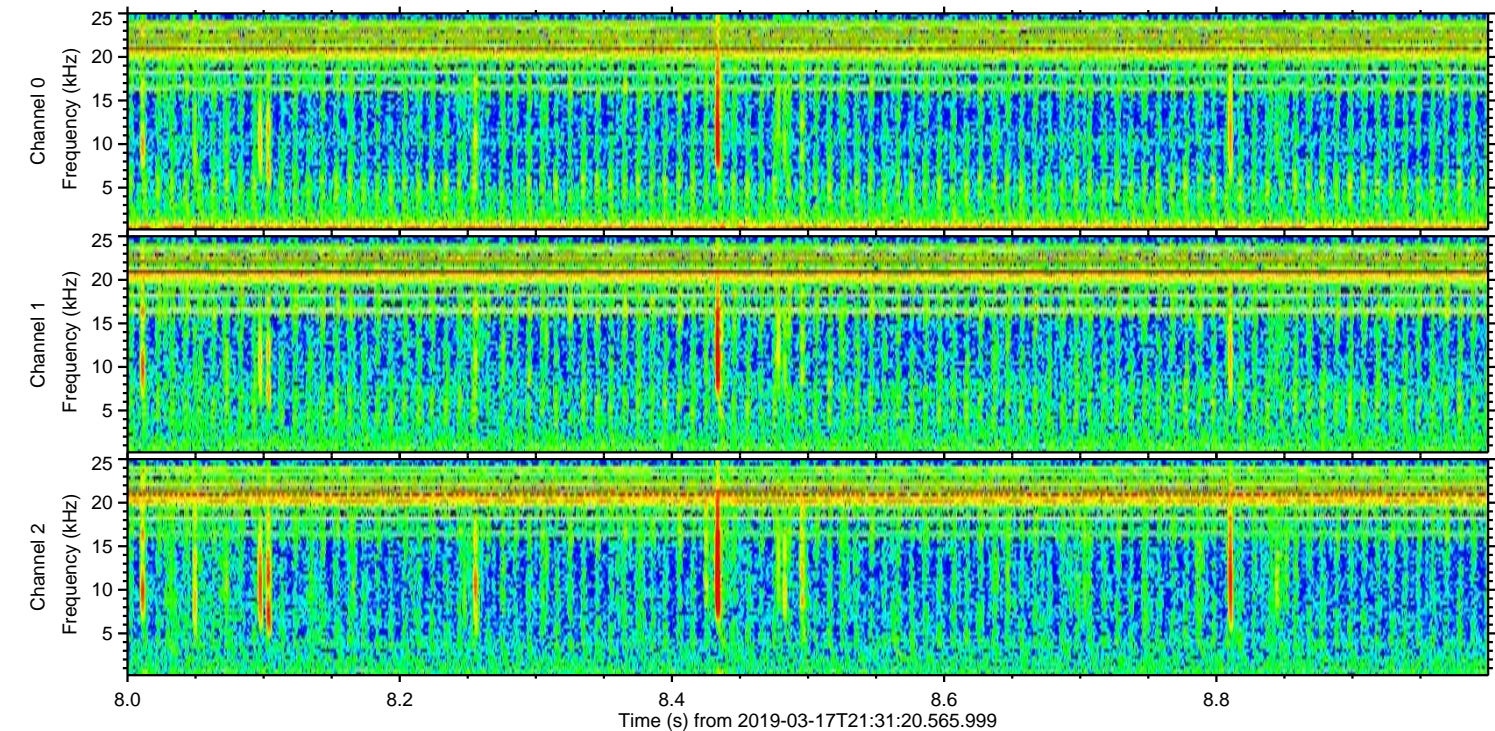
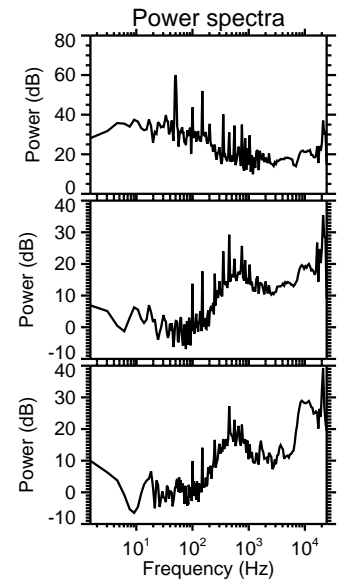
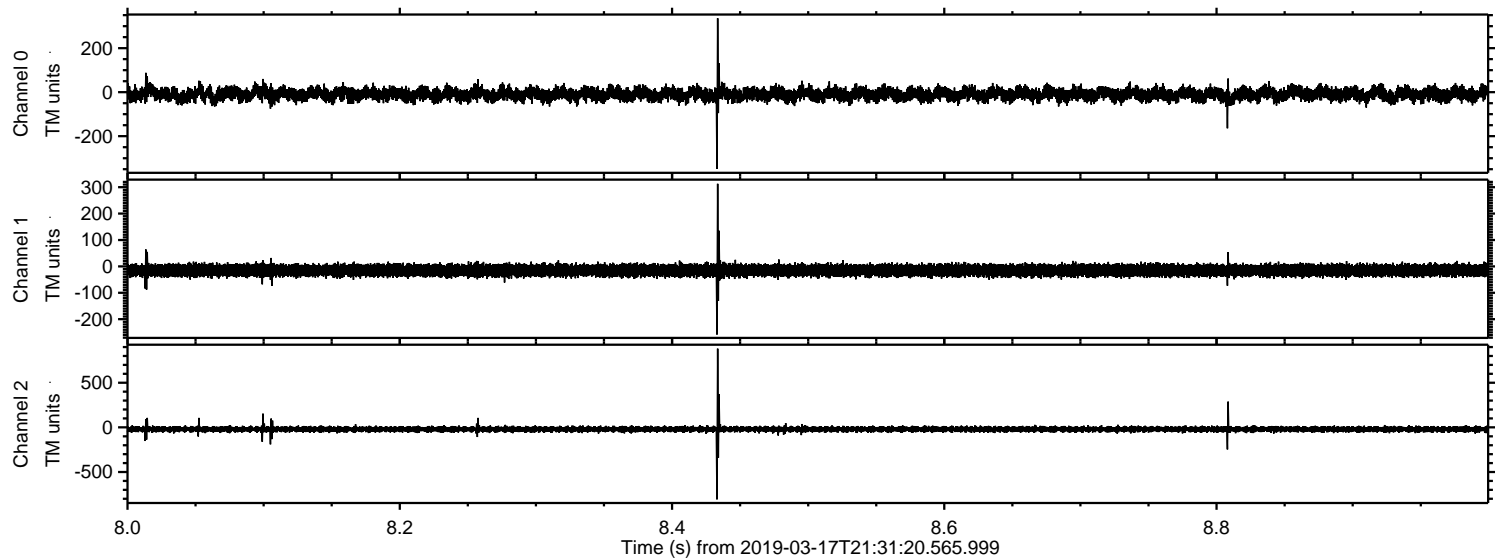
Processed Sun Mar 17 22:39:48 2019 by ELM ver.2012-10-06 from 001__elm20190317_213119__dat00.bin



Processed Sun Mar 17 22:39:49 2019 by ELM ver.2012-10-06 from 001__elm20190317_213119__dat00.bin

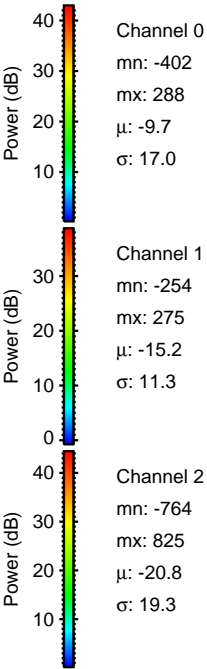
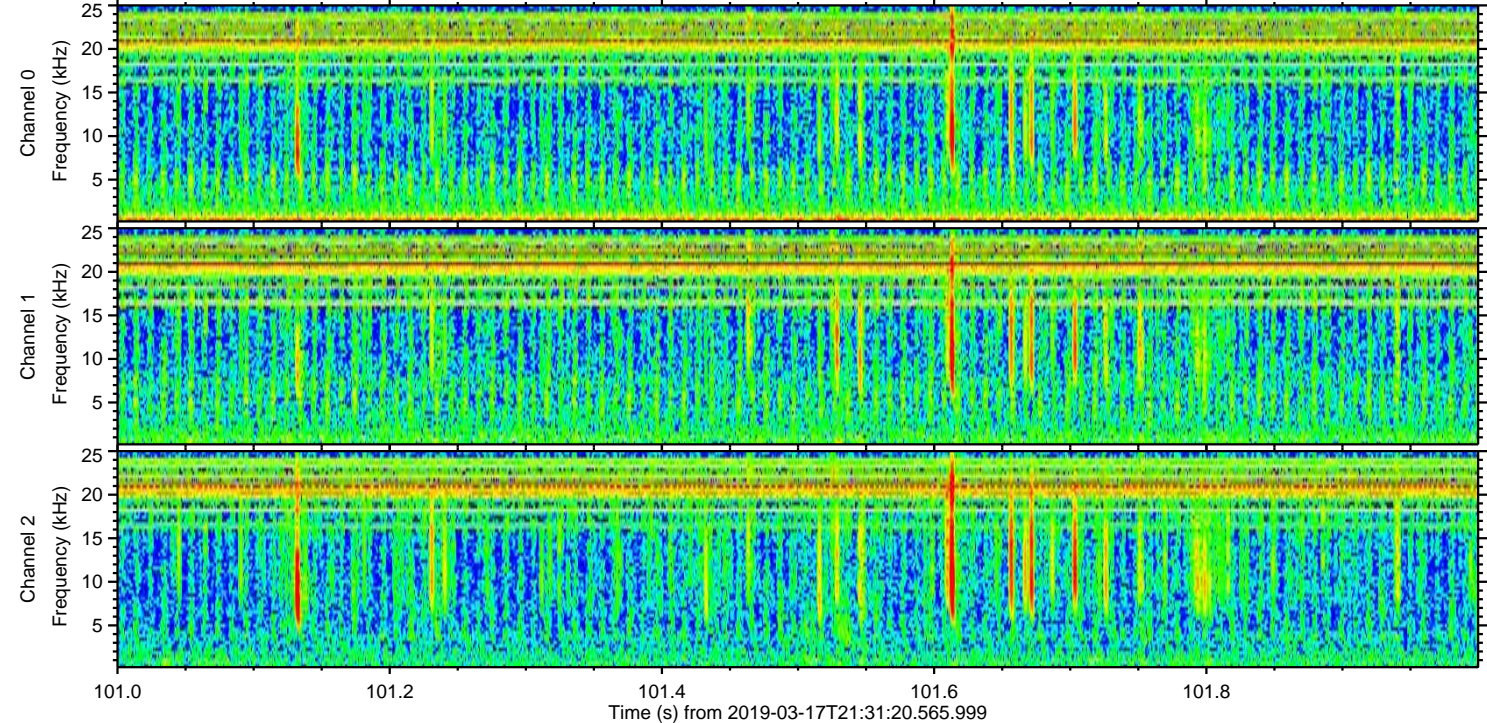
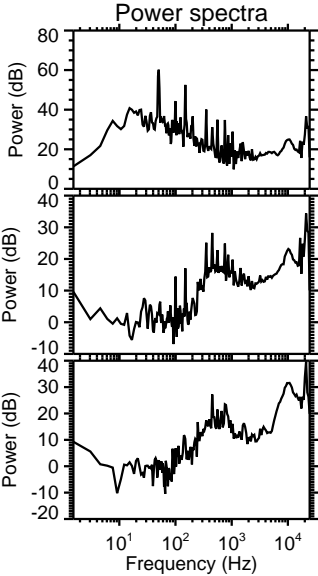
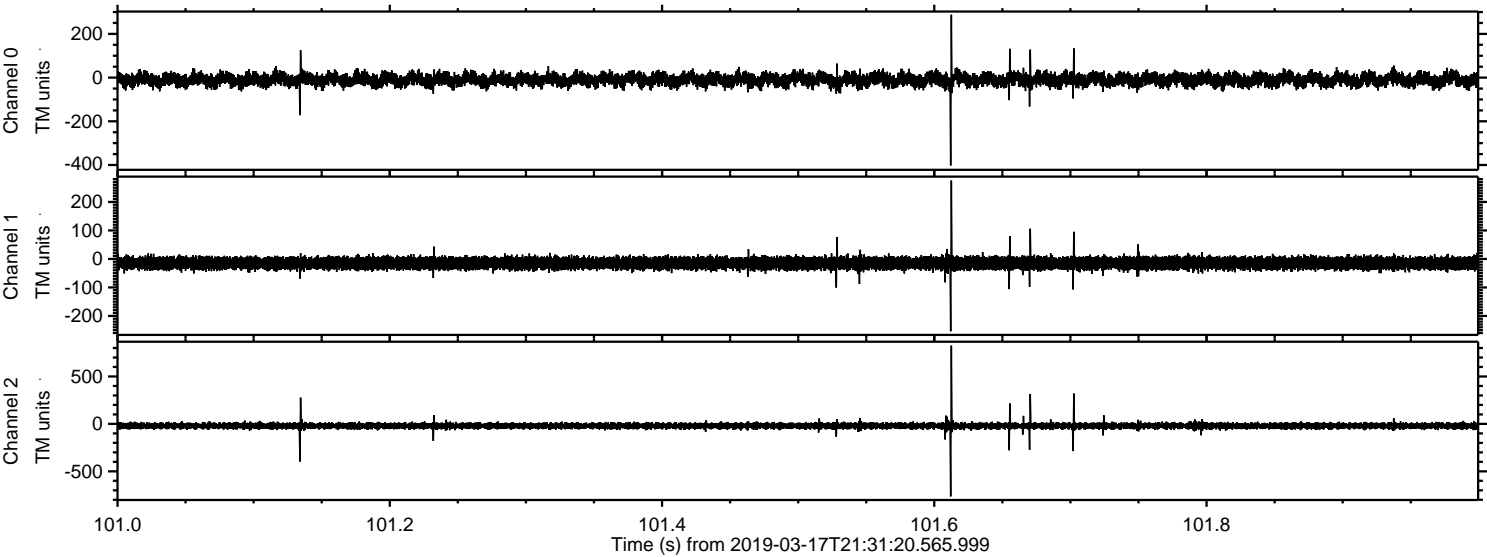


Processed Sun Mar 17 22:39:50 2019 by ELM ver.2012-10-06 from 001__elm20190317_213119__dat00.bin



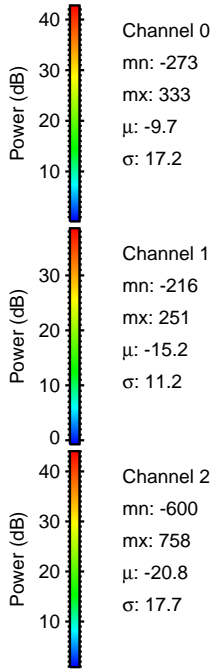
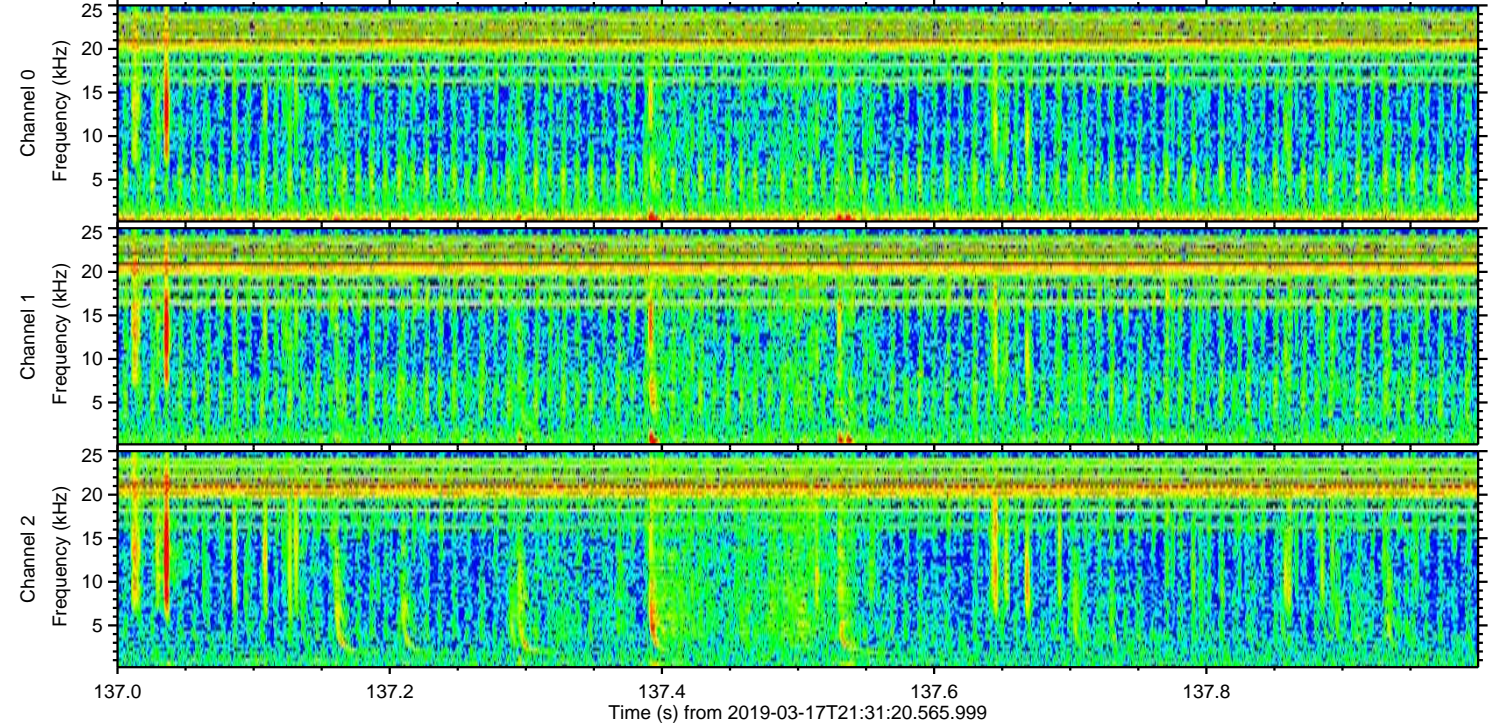
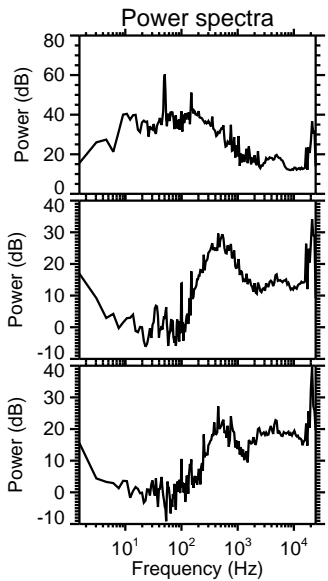
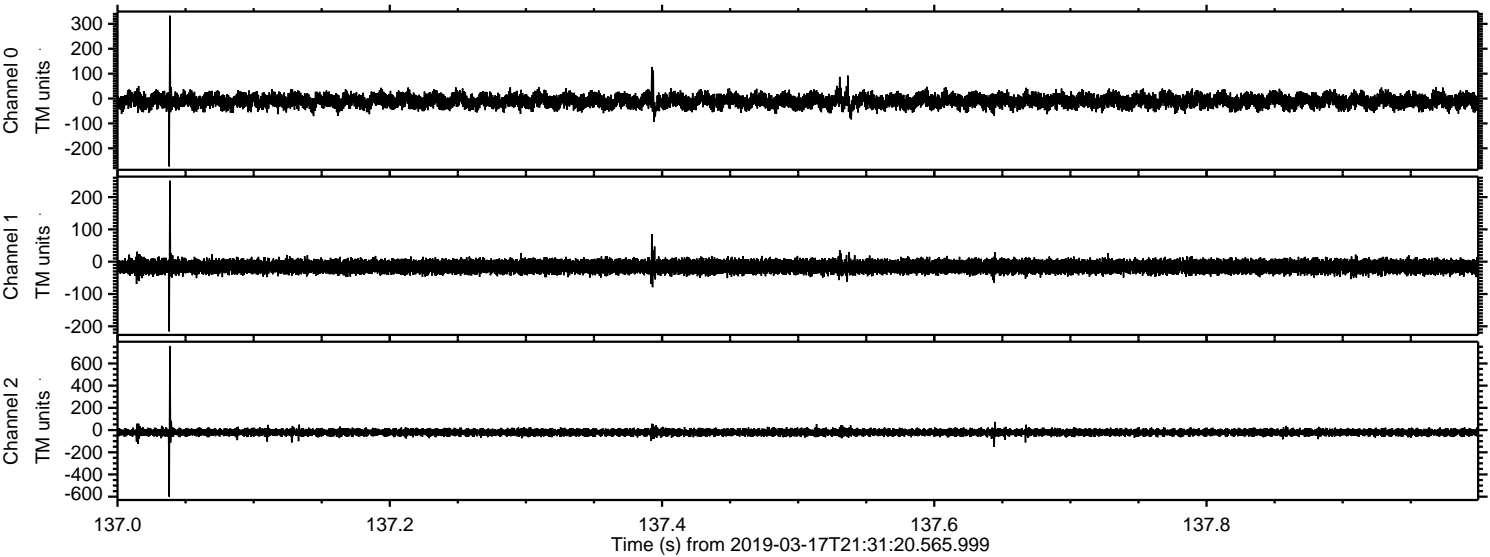
ELMAVAN 3D WAVEFORMS (Measured data sampled at 50 kHz) 51000 packets of 144 samples from 2019-03-17T21:31:20.565.999. Part 102/147

Processed Sun Mar 17 22:39:51 2019 by ELM ver.2012-10-06 from 001__elm20190317_213119__dat00.bin

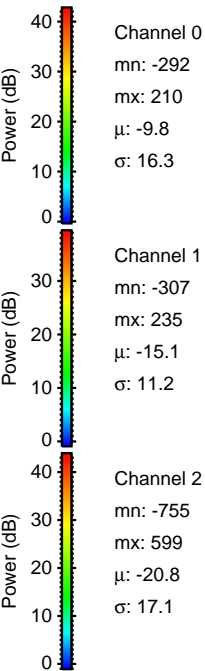
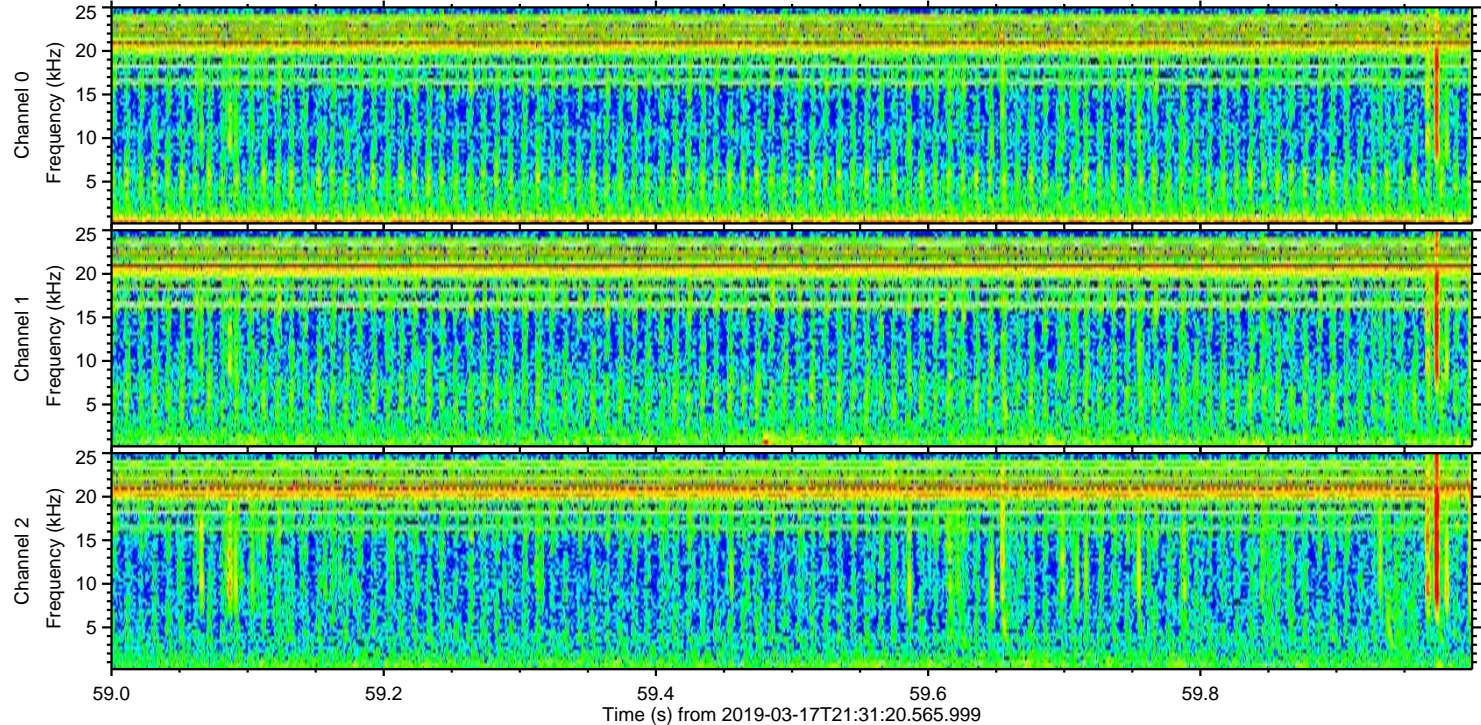
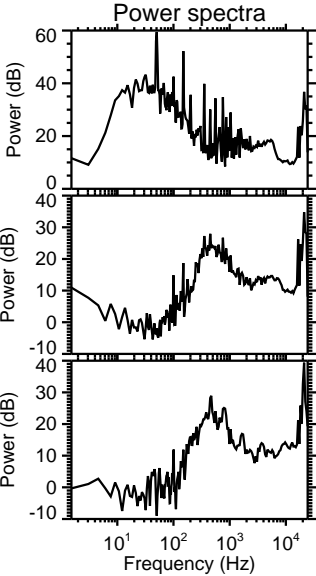
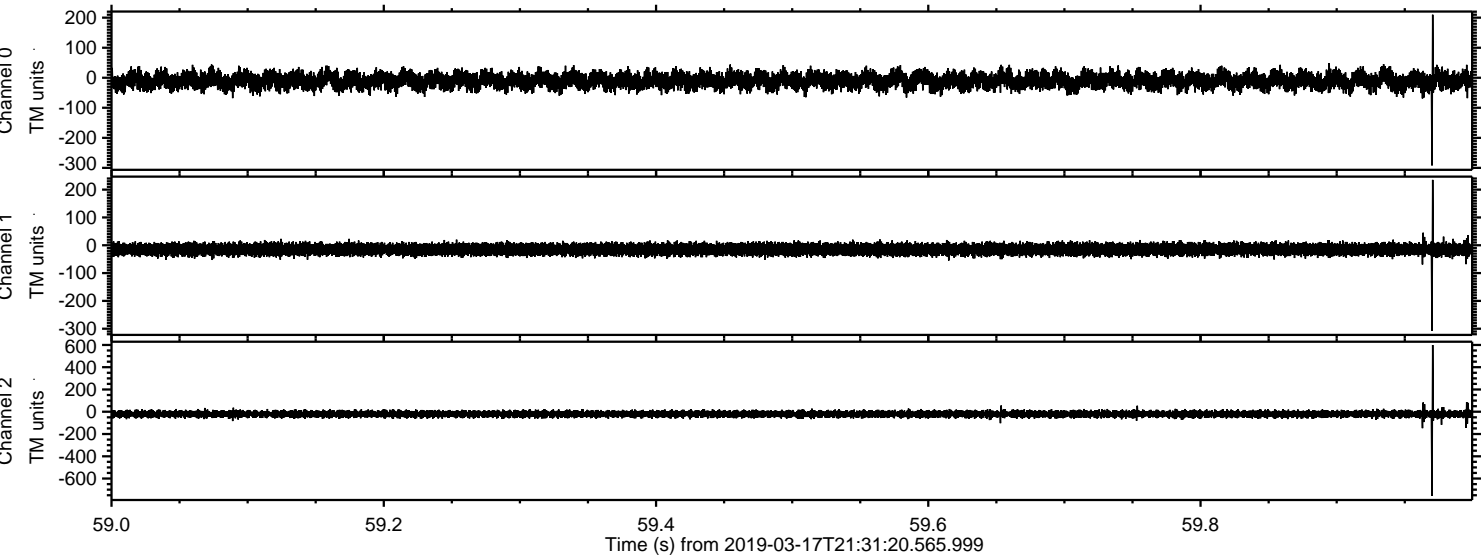


ELMAVAN 3D WAVEFORMS (Measured data sampled at 50 kHz) 51000 packets of 144 samples from 2019-03-17T21:31:20.565.999. Part 138/147

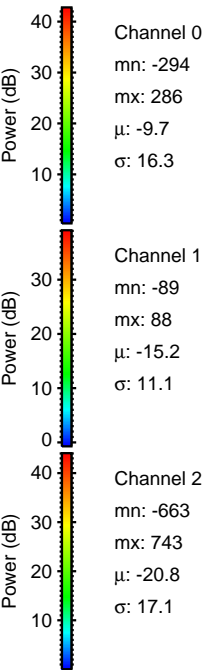
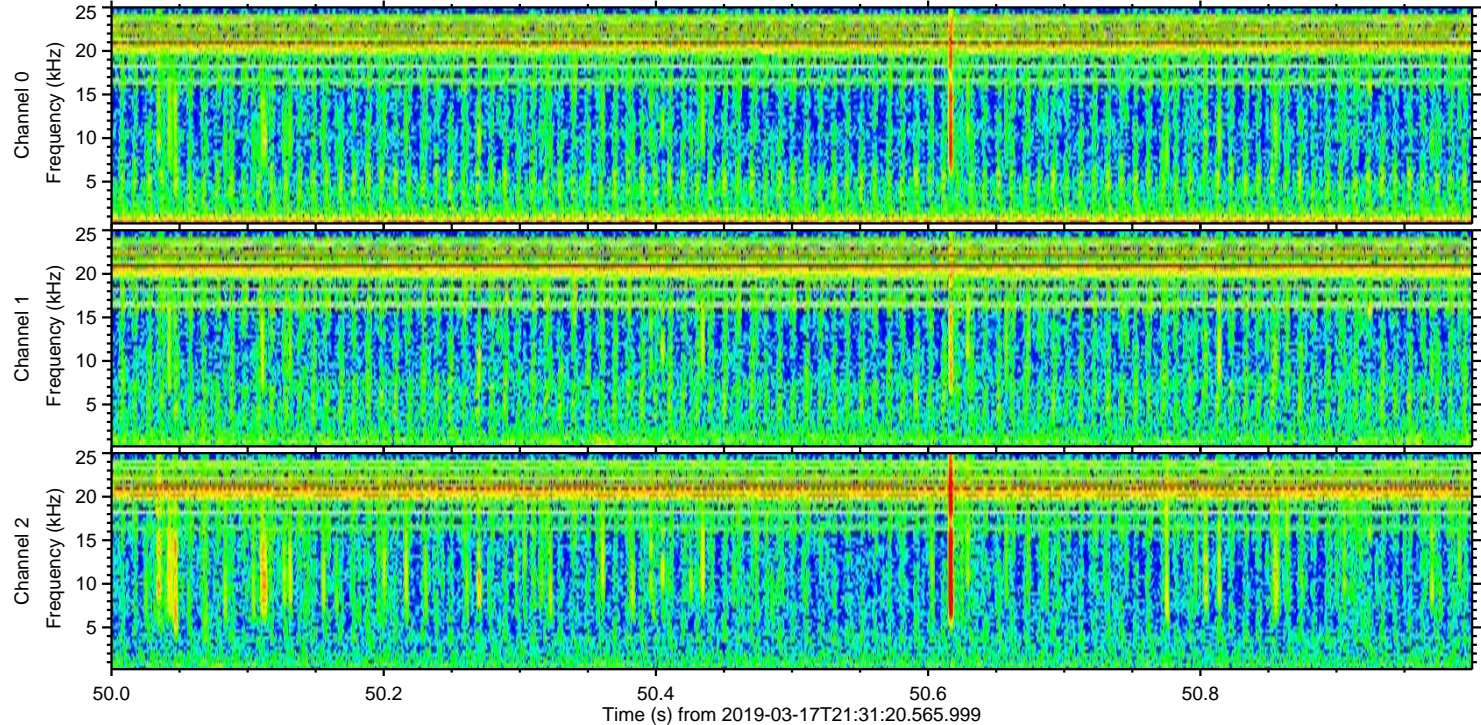
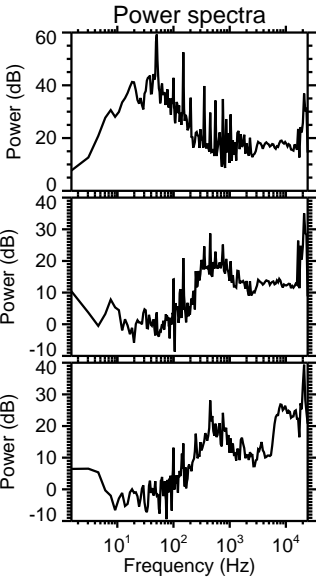
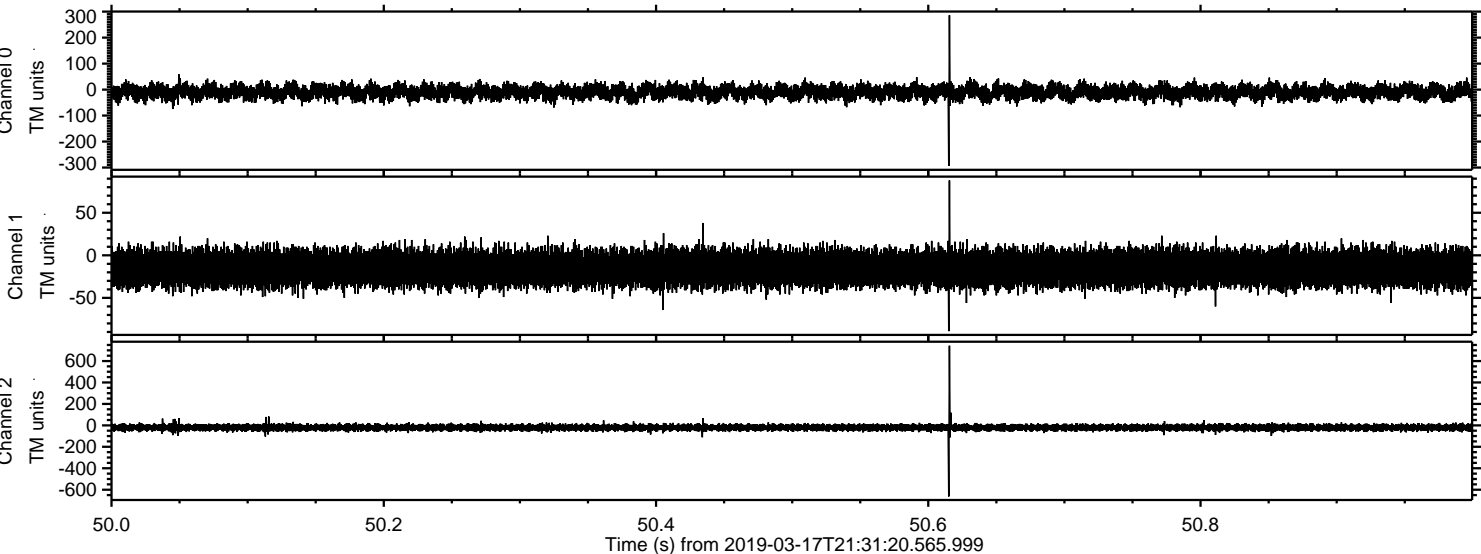
Processed Sun Mar 17 22:39:51 2019 by ELM ver.2012-10-06 from 001__elm20190317_213119__dat00.bin



Processed Sun Mar 17 22:39:52 2019 by ELM ver.2012-10-06 from 001__elm20190317_213119__dat00.bin



Processed Sun Mar 17 22:39:53 2019 by ELM ver.2012-10-06 from 001__elm20190317_213119__dat00.bin



Channel 0
mn: -294
mx: 286
 μ : -9.7
 σ : 16.3

Channel 1
mn: -89
mx: 88
 μ : -15.2
 σ : 11.1

Channel 2
mn: -663
mx: 743
 μ : -20.8
 σ : 17.1

Processed Sun Mar 17 22:39:54 2019 by ELM ver.2012-10-06 from 001__elm20190317_213119__dat00.bin

