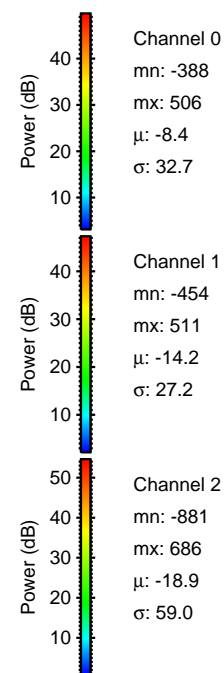
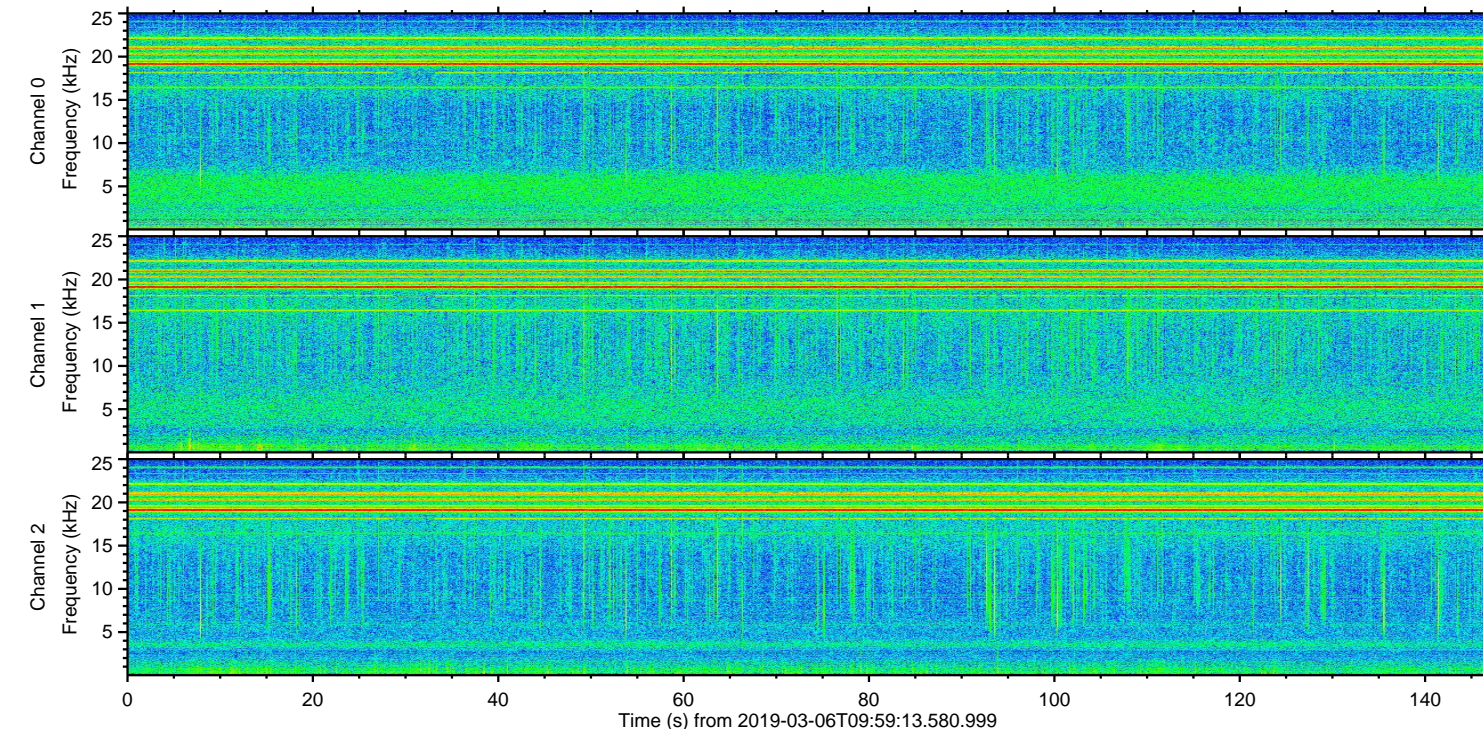
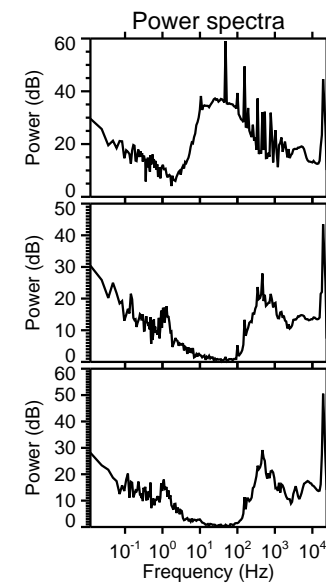
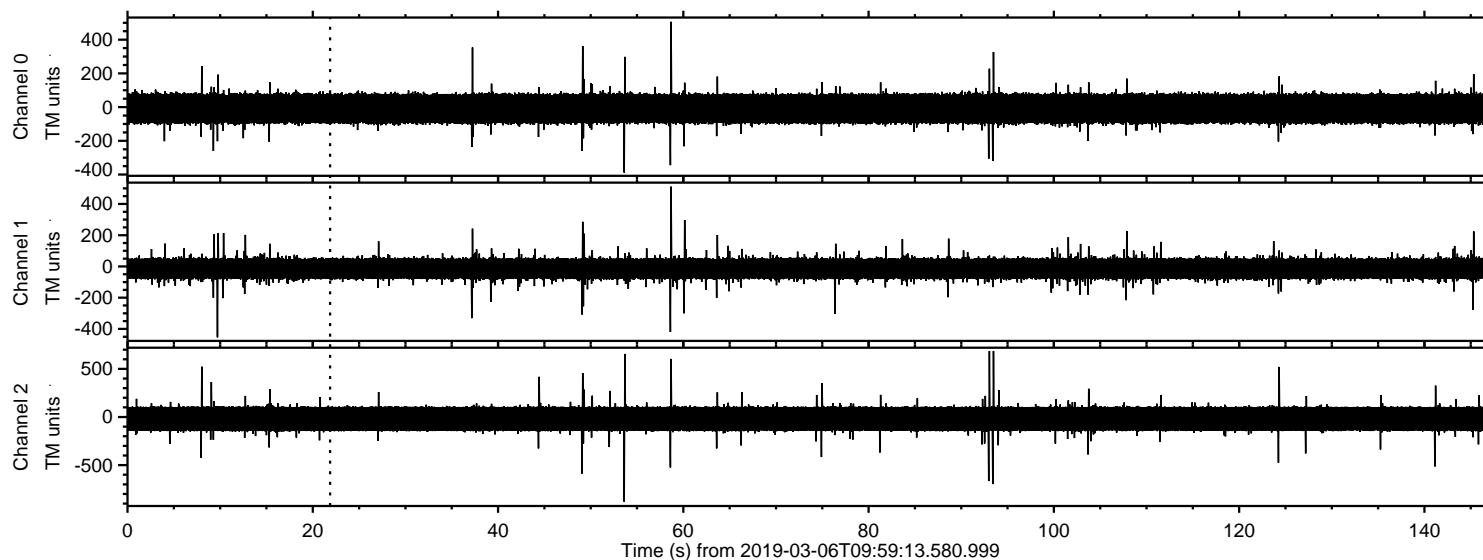
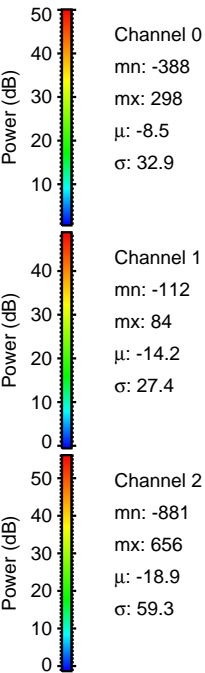
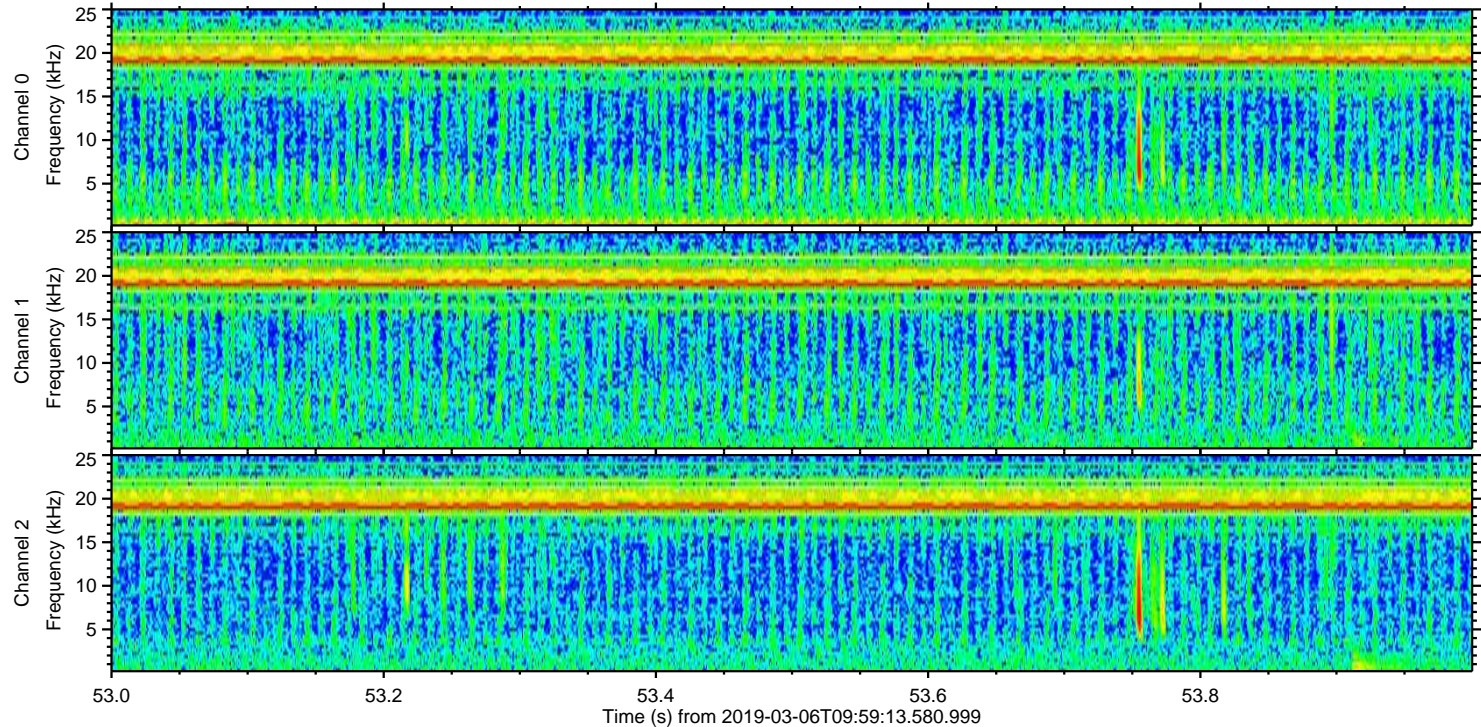
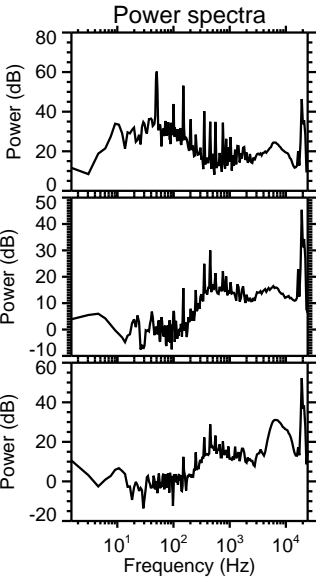
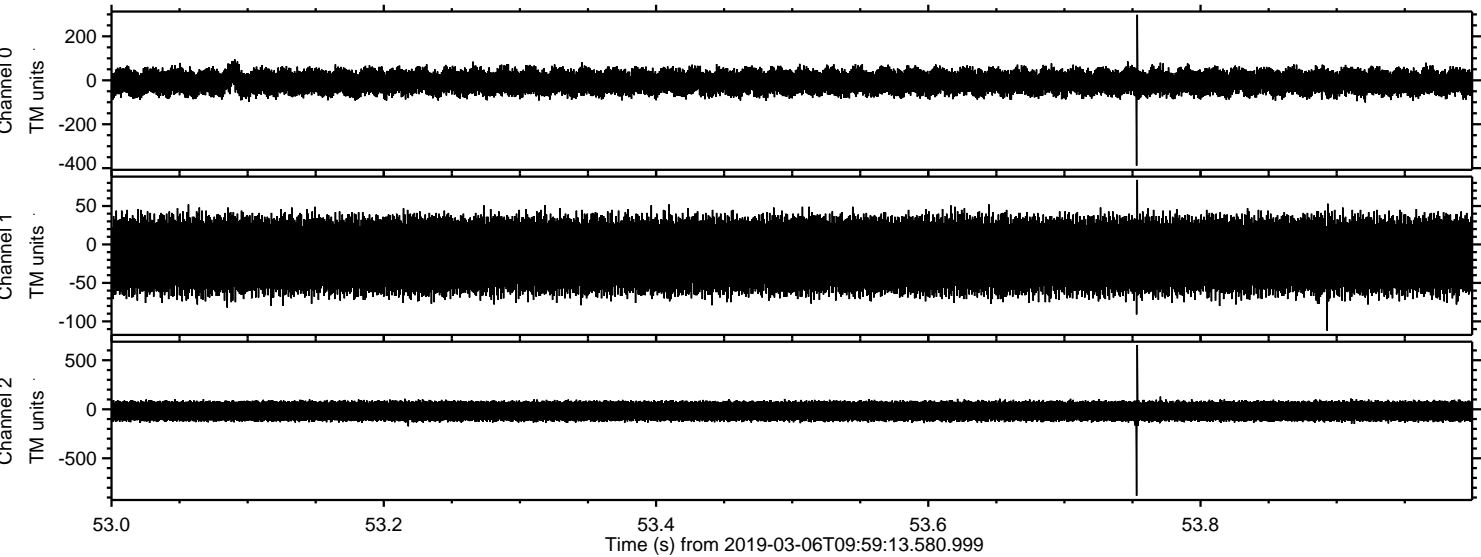


ELMAVAN 3D WAVEFORMS (Measured data sampled at 50 kHz) 50999 packets of 144 samples from 2019-03-06T09:59:13.580.999.

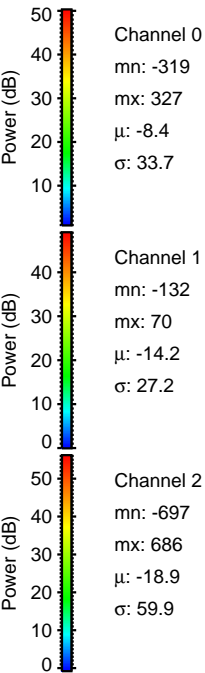
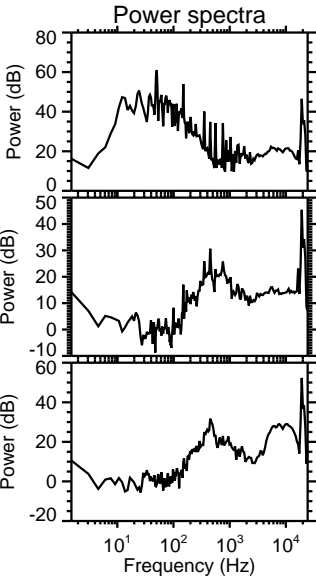
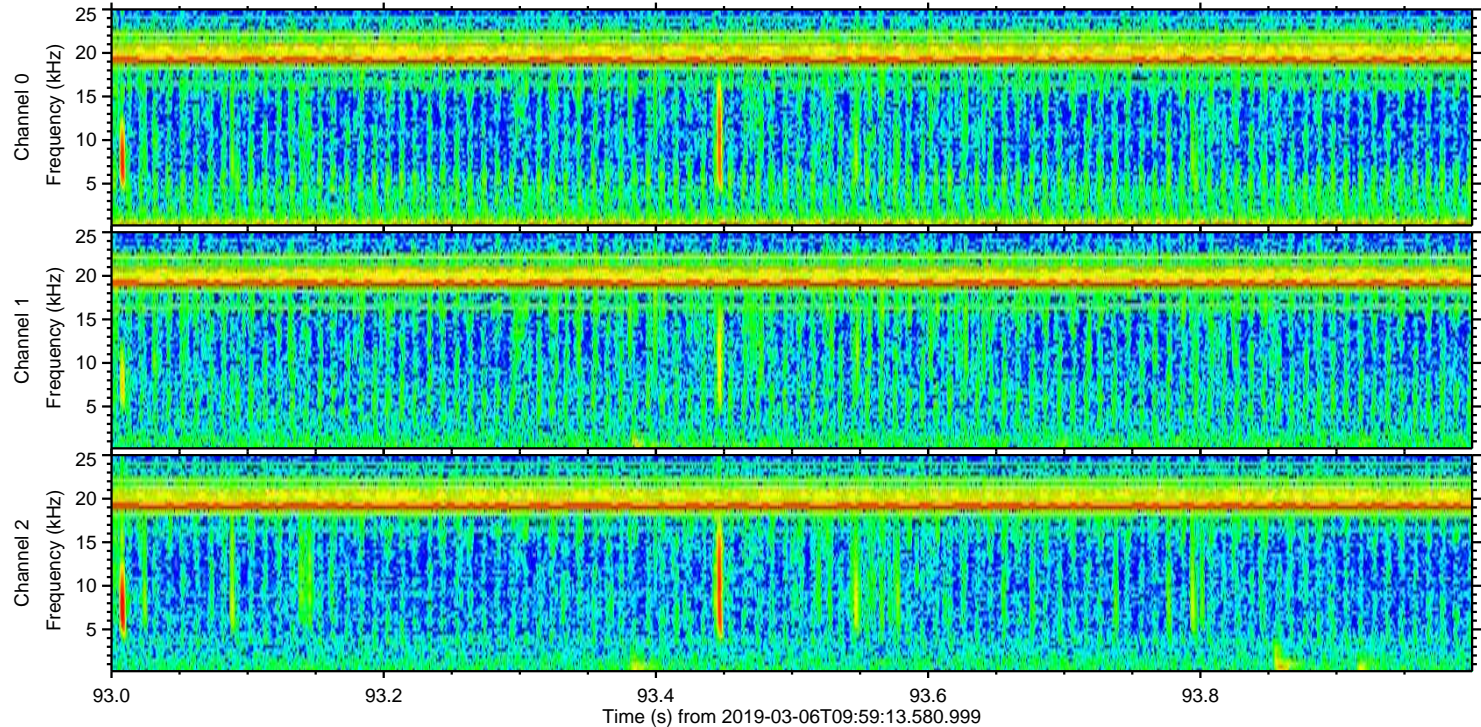
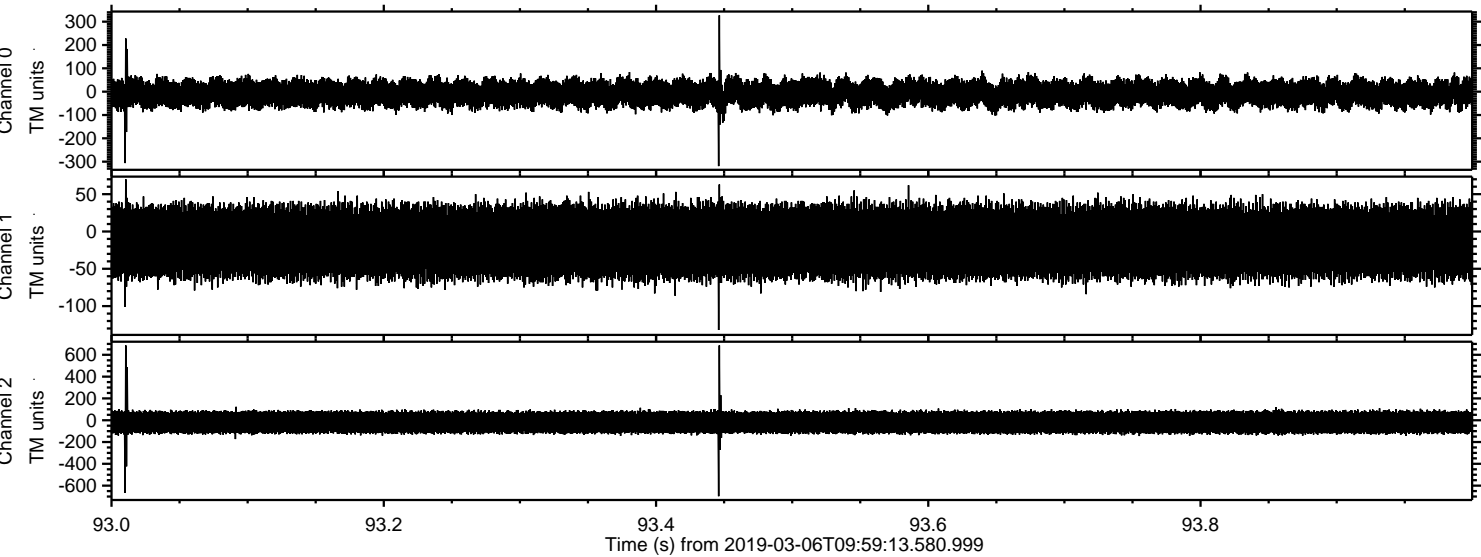
Processed Wed Mar 6 11:06:56 2019 by ELM ver.2012-10-06 from 001__elm20190306_095912__dat00.bin



Processed Wed Mar 6 11:07:02 2019 by ELM ver.2012-10-06 from 001__elm20190306_095912__dat00.bin



Processed Wed Mar 6 11:07:03 2019 by ELM ver.2012-10-06 from 001__elm20190306_095912__dat00.bin

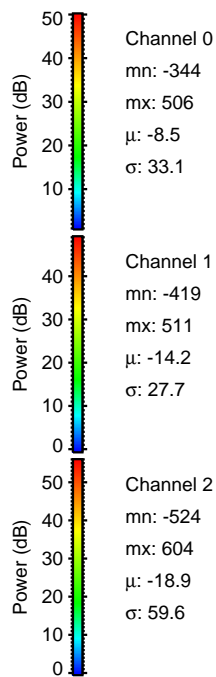
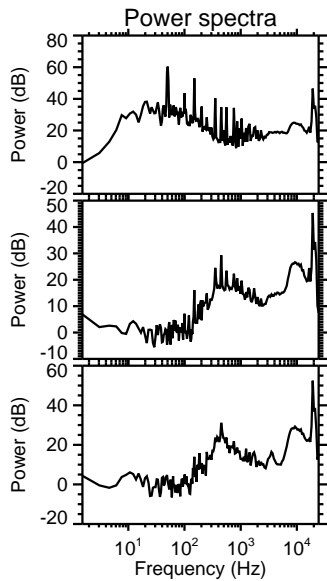
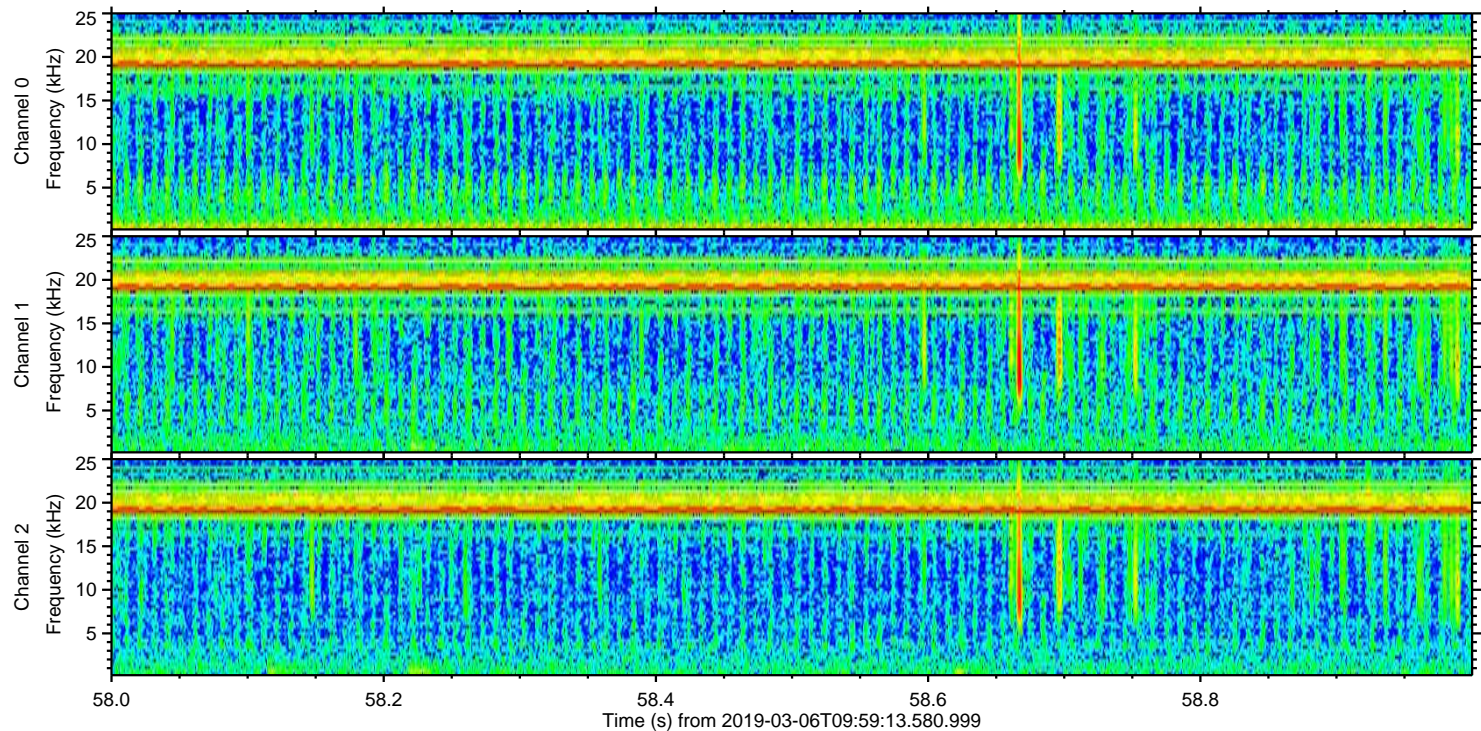
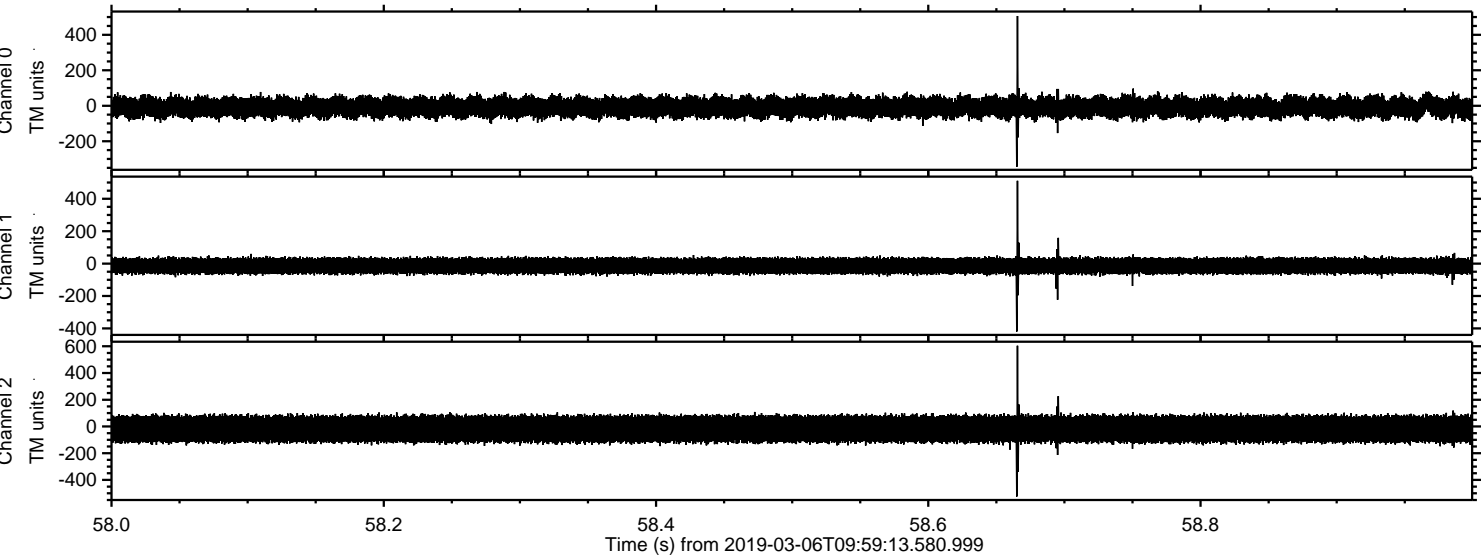


Channel 0
mn: -319
mx: 327
 μ : -8.4
 σ : 33.7

Channel 1
mn: -132
mx: 70
 μ : -14.2
 σ : 27.2

Channel 2
mn: -697
mx: 686
 μ : -18.9
 σ : 59.9

Processed Wed Mar 6 11:07:03 2019 by ELM ver.2012-10-06 from 001__elm20190306_095912__dat00.bin

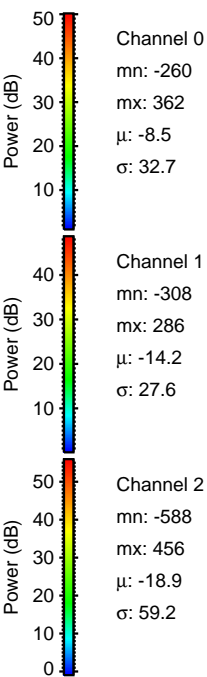
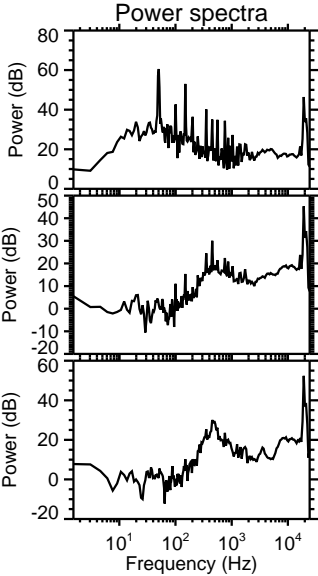
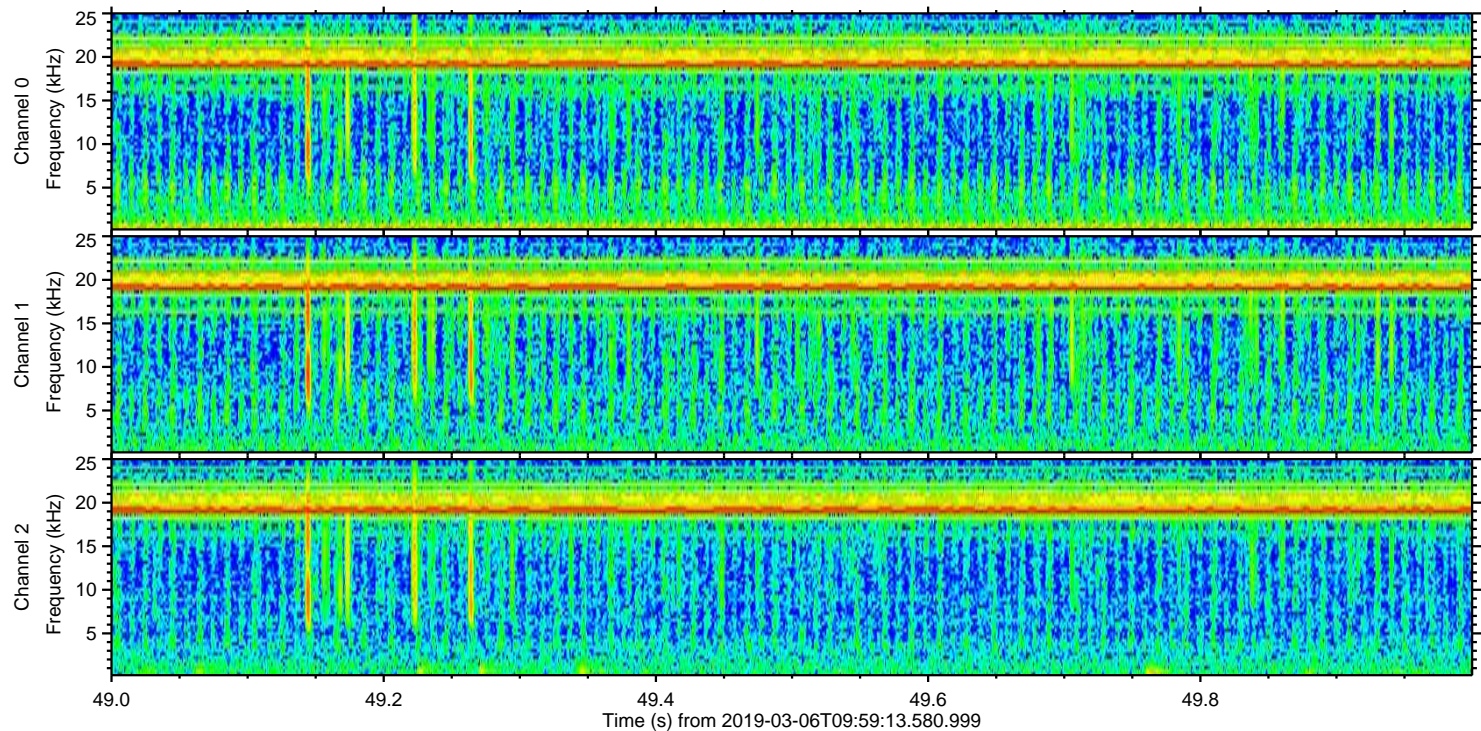
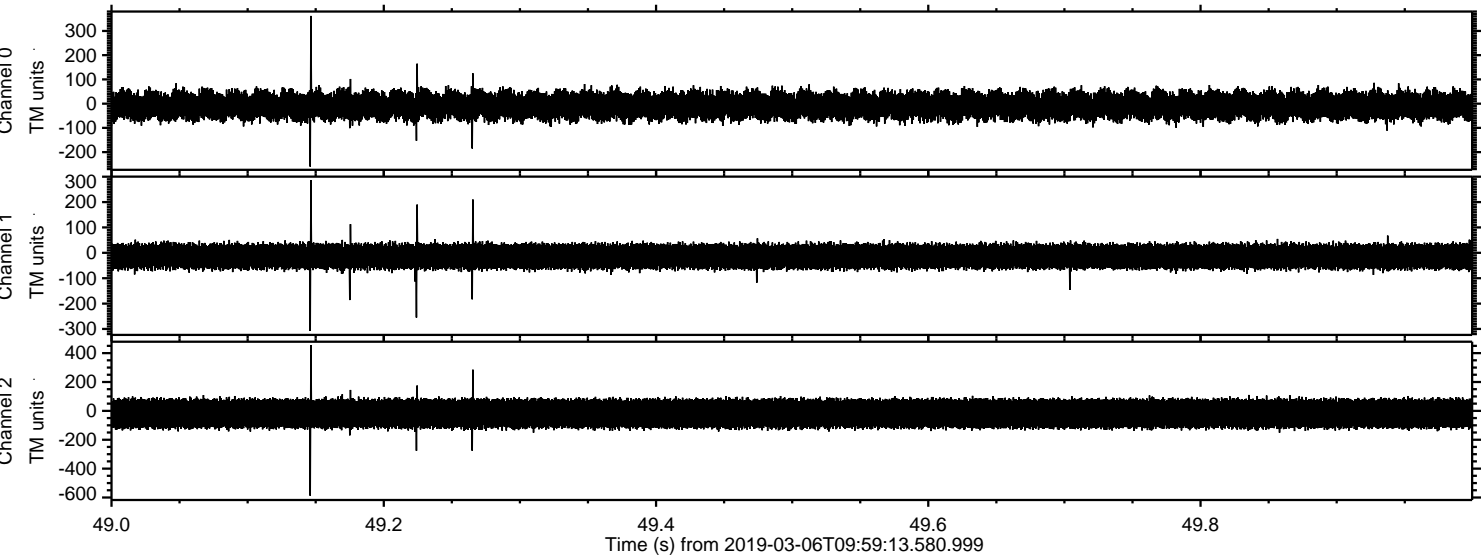


Channel 0
mn: -344
mx: 506
 μ : -8.5
 σ : 33.1

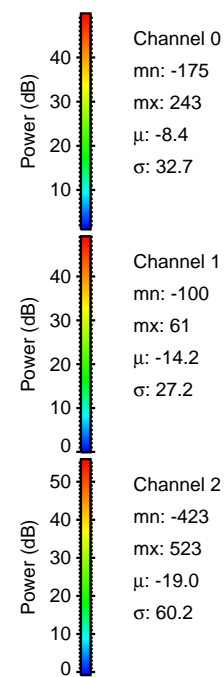
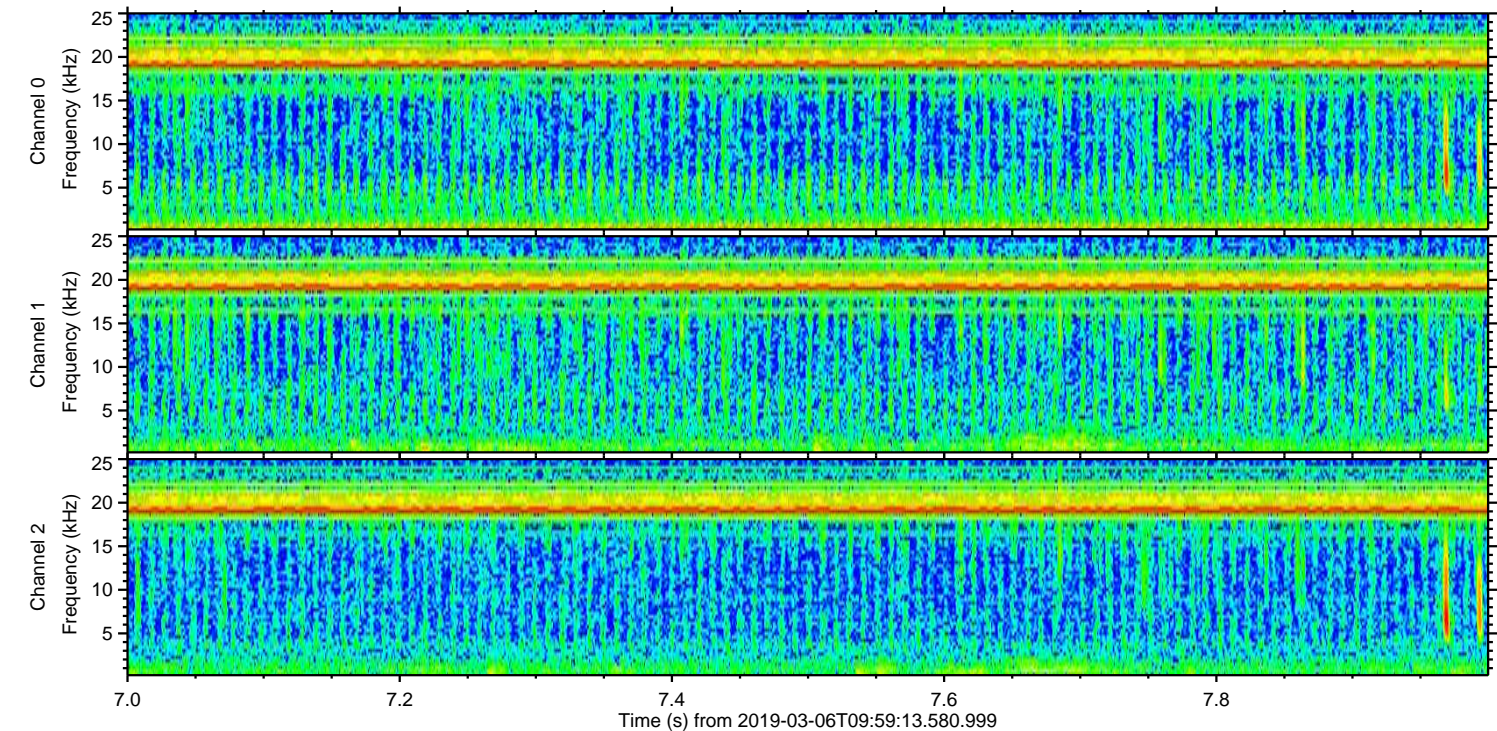
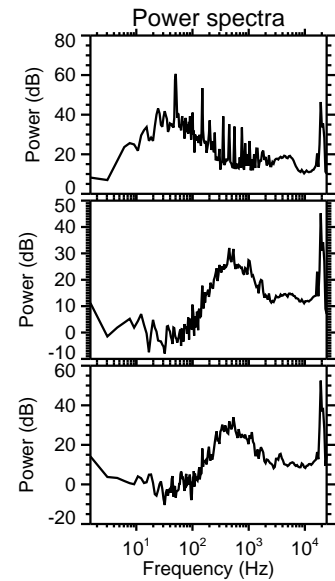
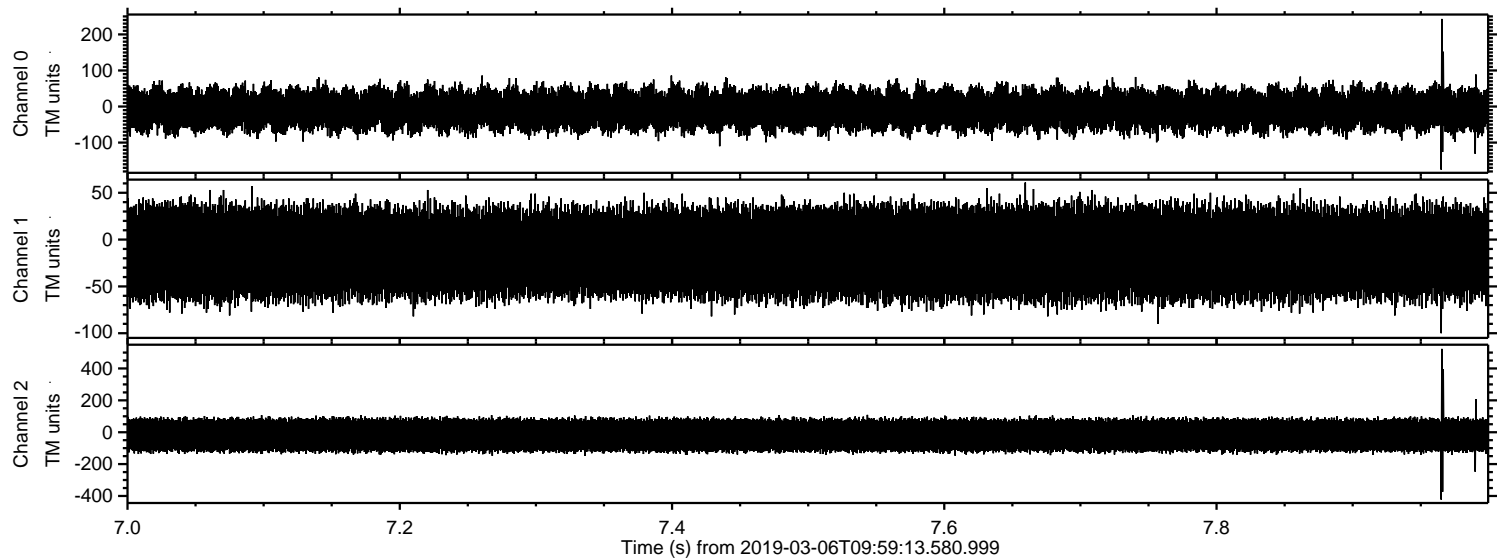
Channel 1
mn: -419
mx: 511
 μ : -14.2
 σ : 27.7

Channel 2
mn: -524
mx: 604
 μ : -18.9
 σ : 59.6

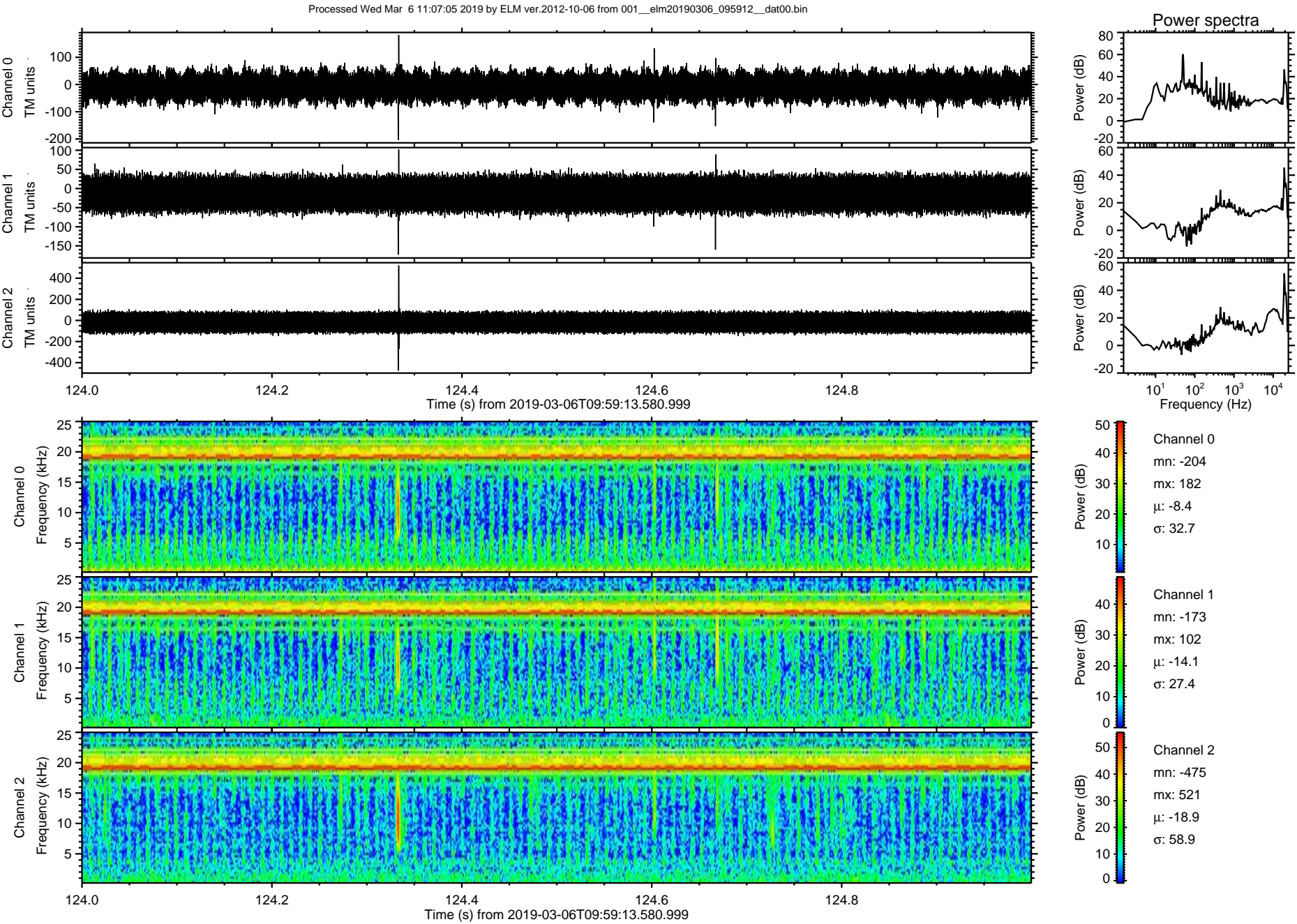
Processed Wed Mar 6 11:07:04 2019 by ELM ver.2012-10-06 from 001__elm20190306_095912__dat00.bin



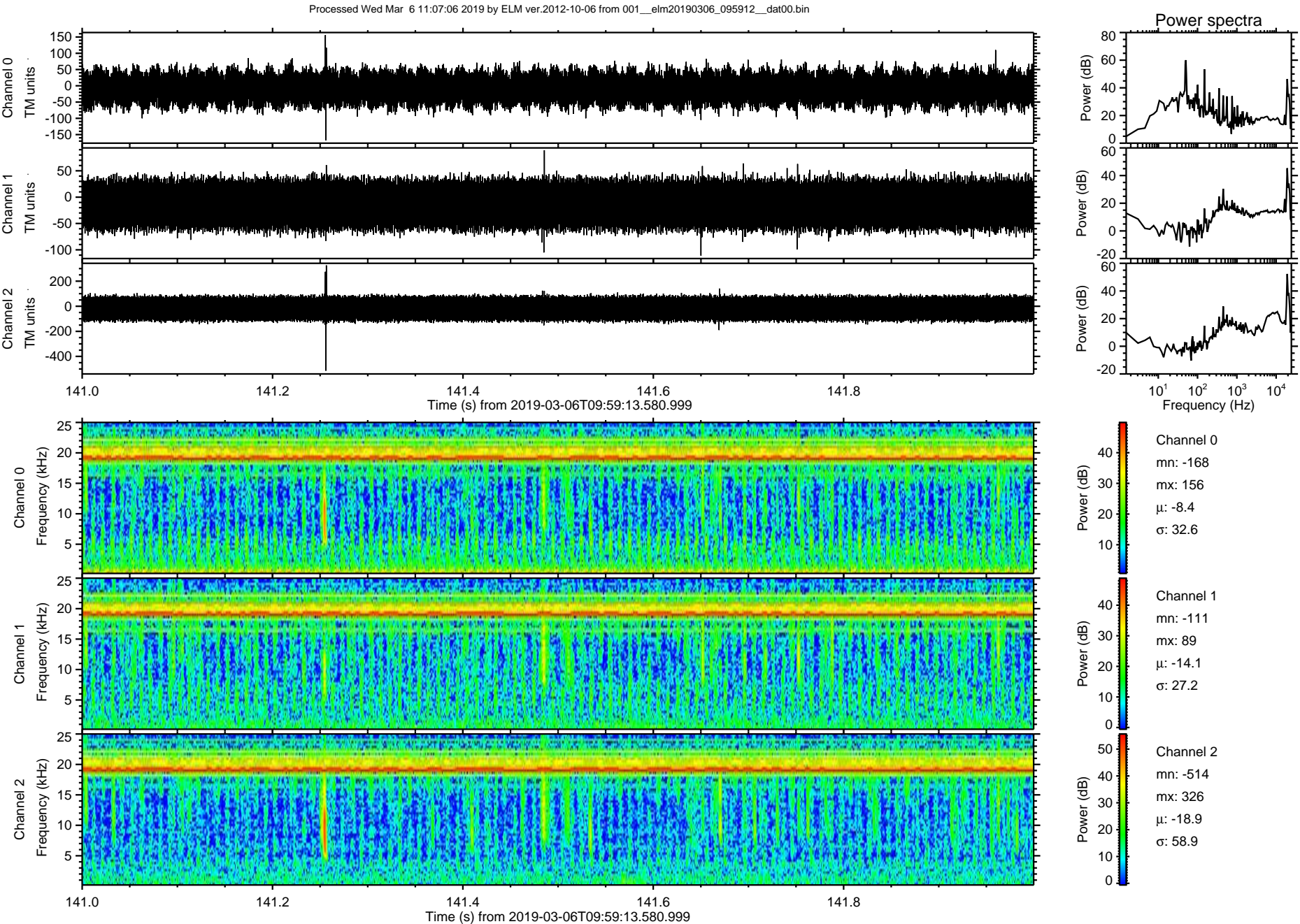
Processed Wed Mar 6 11:07:05 2019 by ELM ver.2012-10-06 from 001__elm20190306_095912__dat00.bin

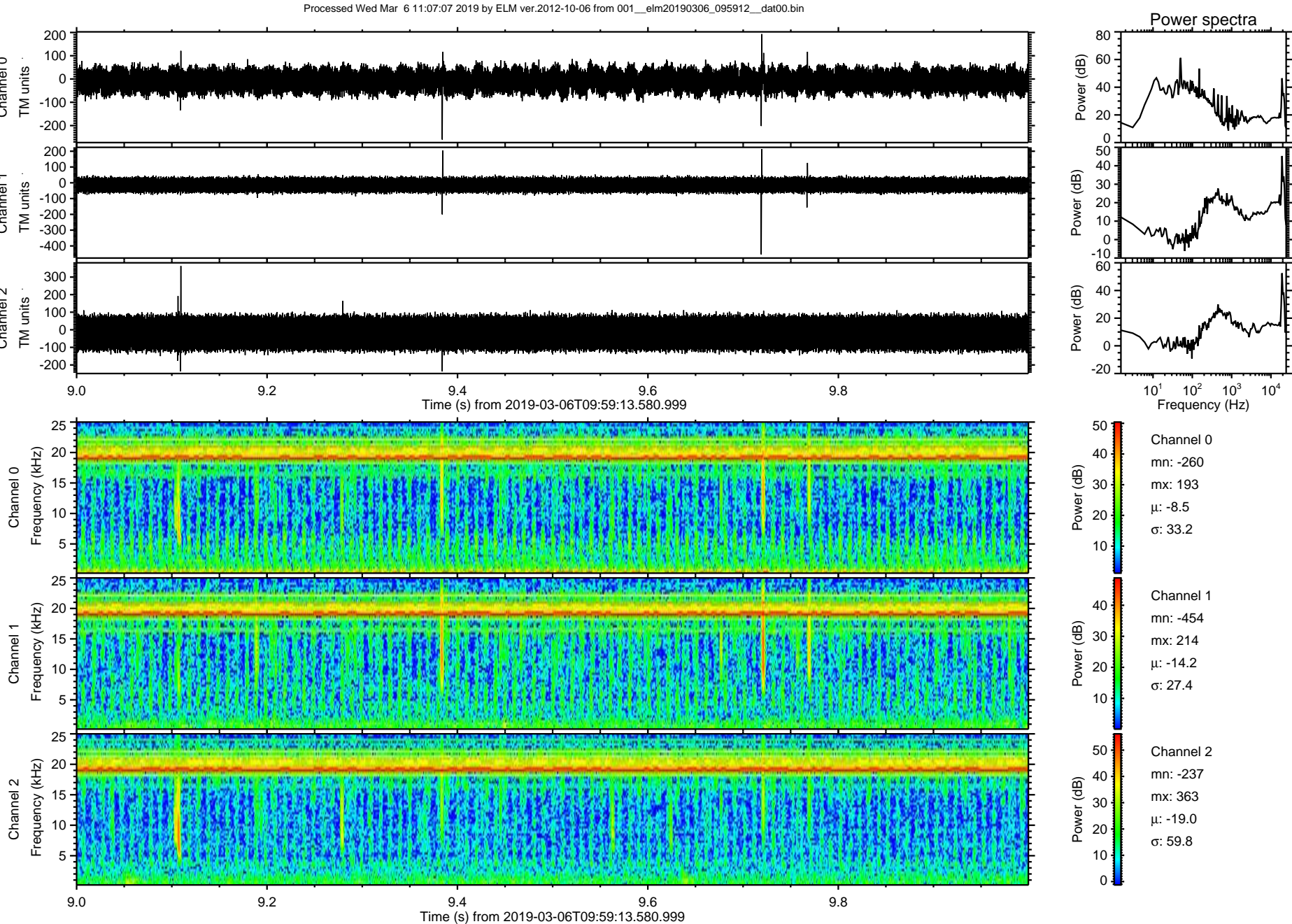


ELMAVAN 3D WAVEFORMS (Measured data sampled at 50 kHz) 50999 packets of 144 samples from 2019-03-06T09:59:13.580.999. Part 125/147

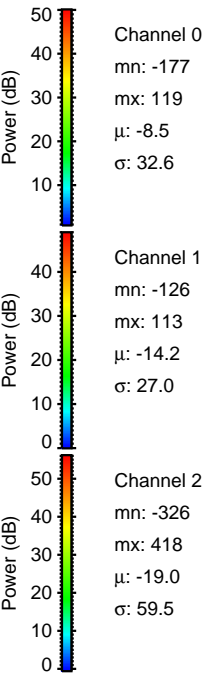
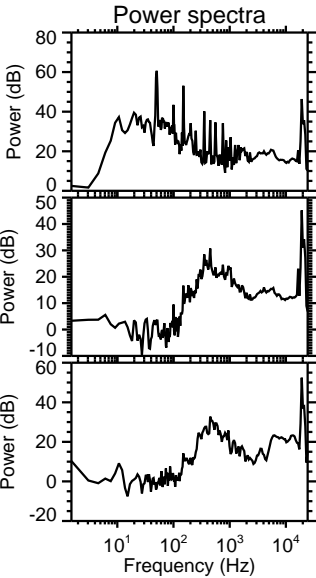
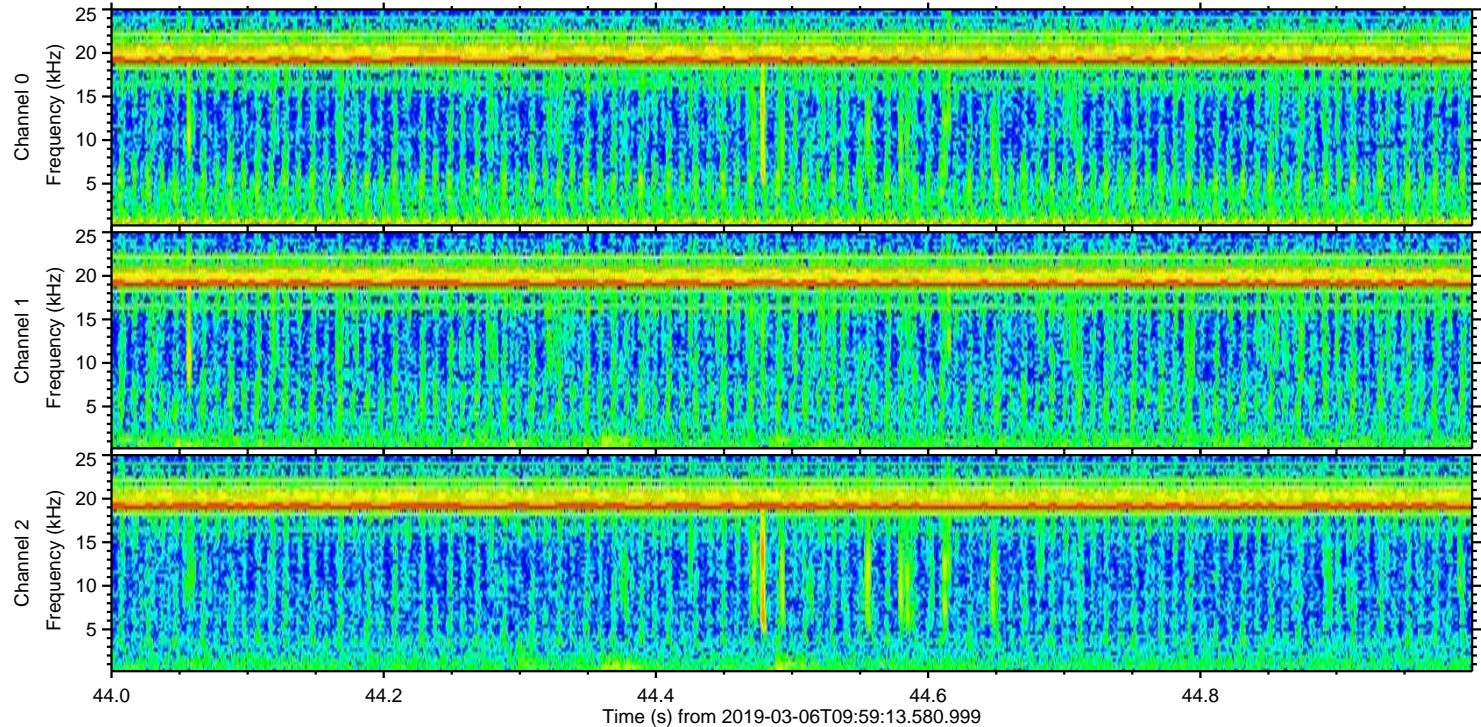
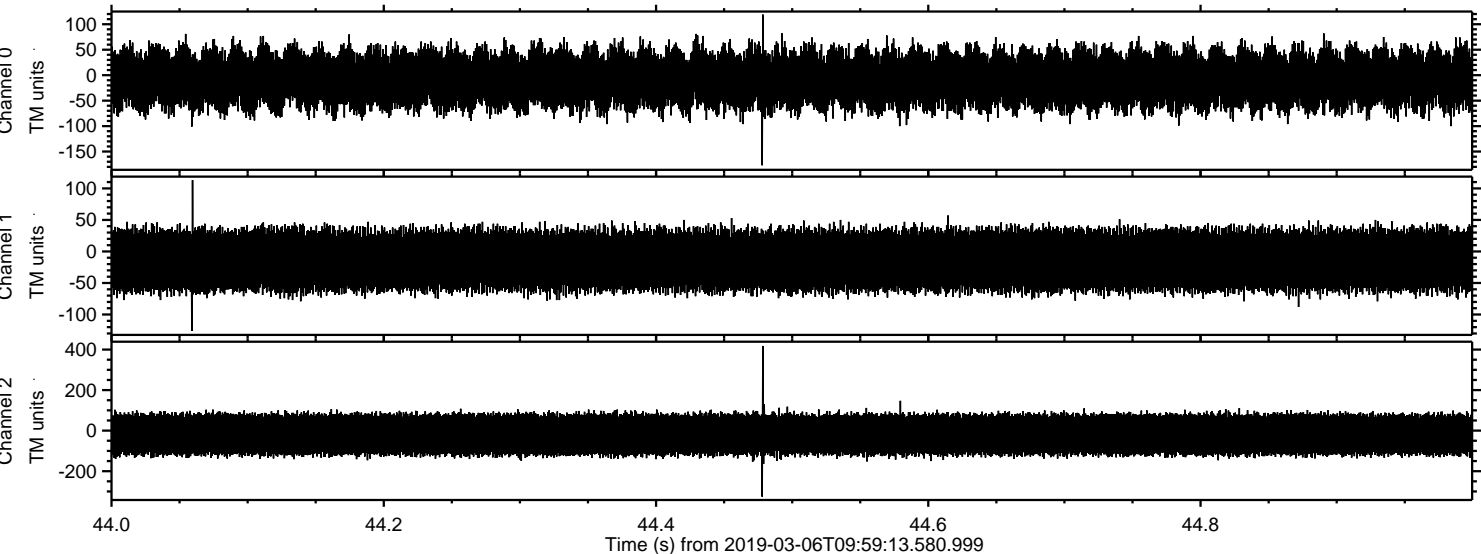


ELMAVAN 3D WAVEFORMS (Measured data sampled at 50 kHz) 50999 packets of 144 samples from 2019-03-06T09:59:13.580.999. Part 142/147





Processed Wed Mar 6 11:07:07 2019 by ELM ver.2012-10-06 from 001__elm20190306_095912__dat00.bin



ELMAVAN 3D WAVEFORMS (Measured data sampled at 50 kHz) 50999 packets of 144 samples from 2019-03-06T09:59:13.580.999. Part 133/147

