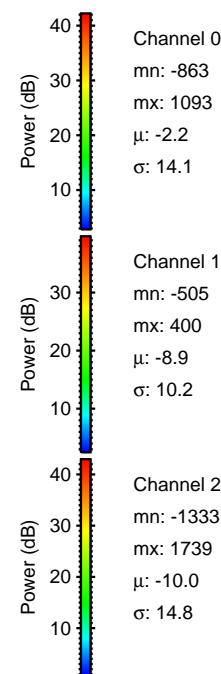
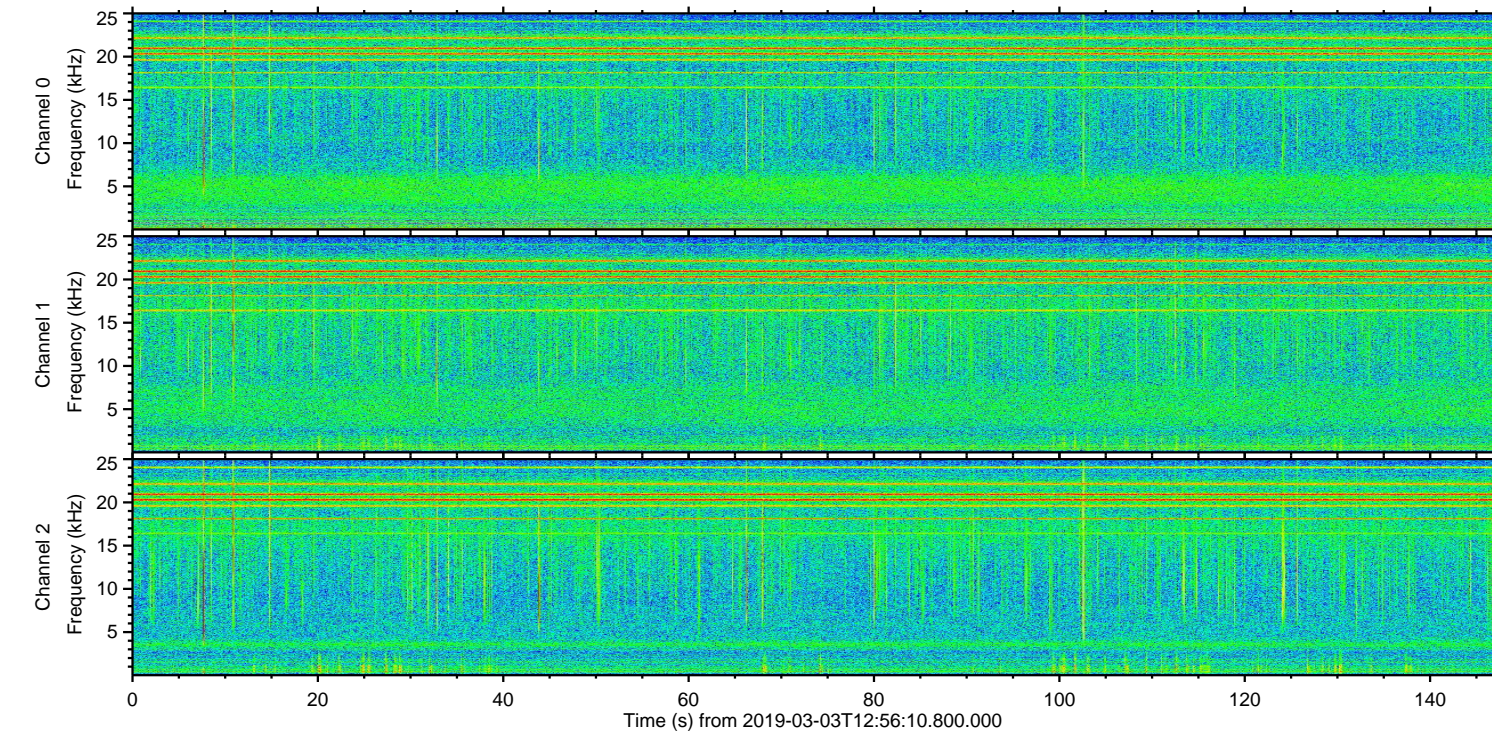
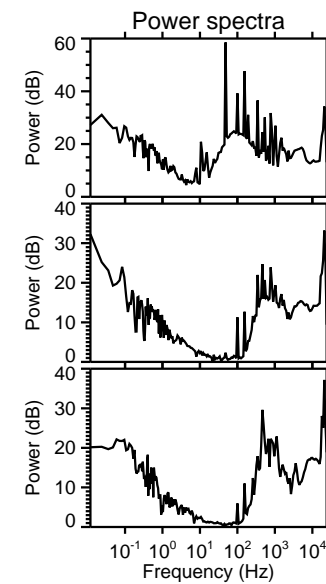
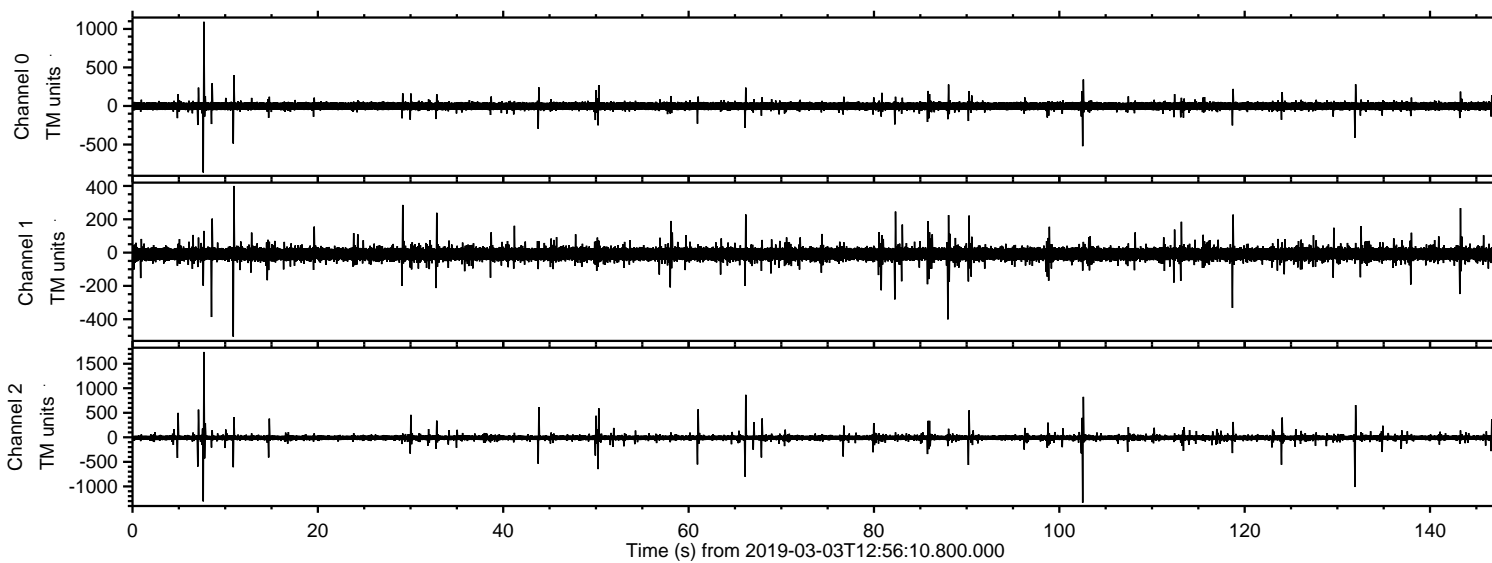
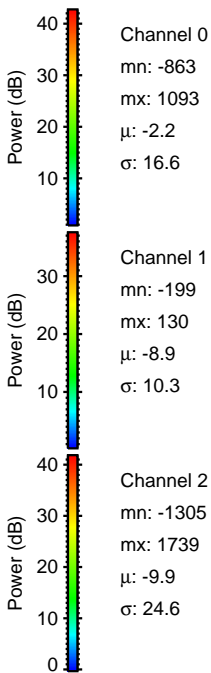
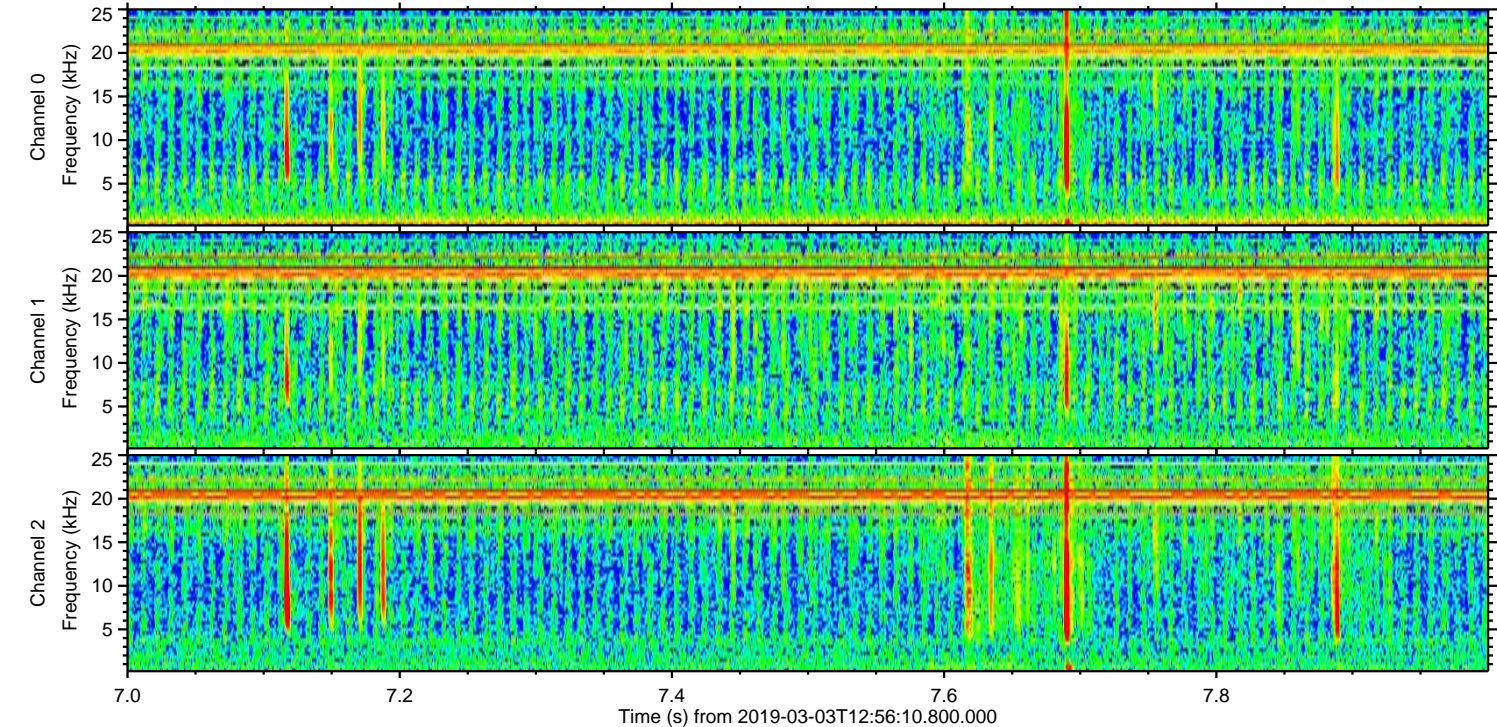
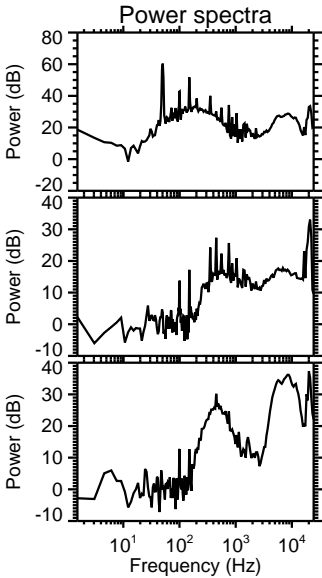
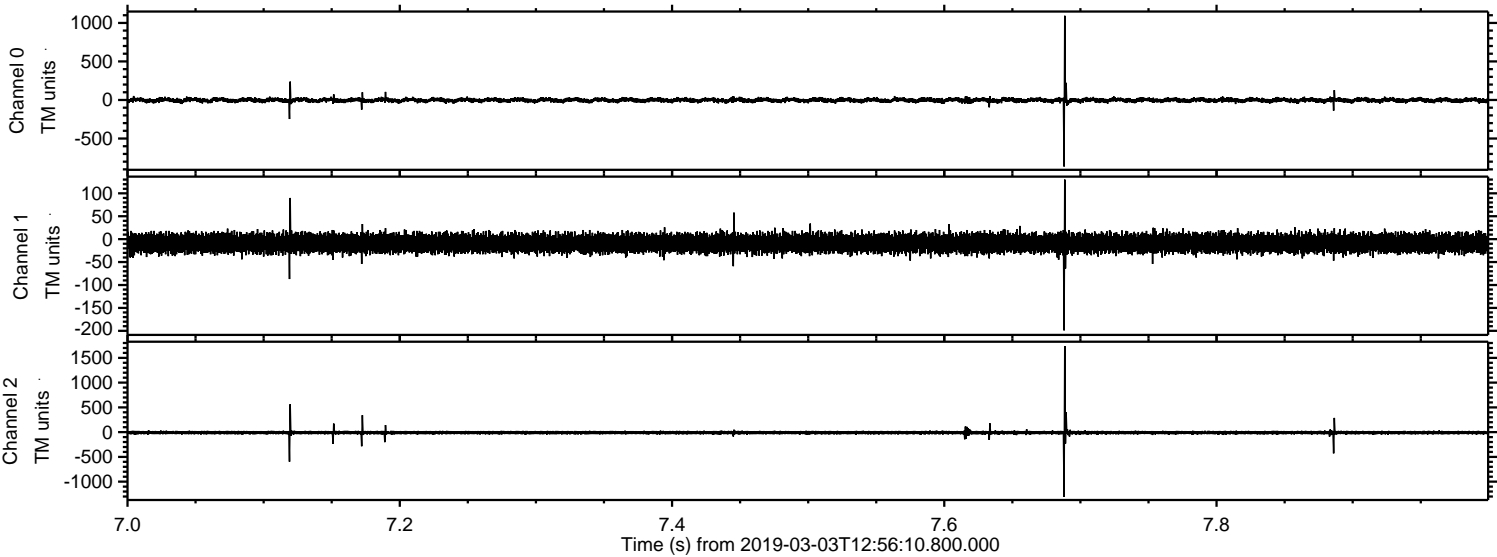


ELMAVAN 3D WAVEFORMS (Measured data sampled at 50 kHz) 51000 packets of 144 samples from 2019-03-03T12:56:10.800.000.

Processed Sun Mar 3 14:03:51 2019 by ELM ver.2012-10-06 from 001__elm20190303_125609__dat00.bin

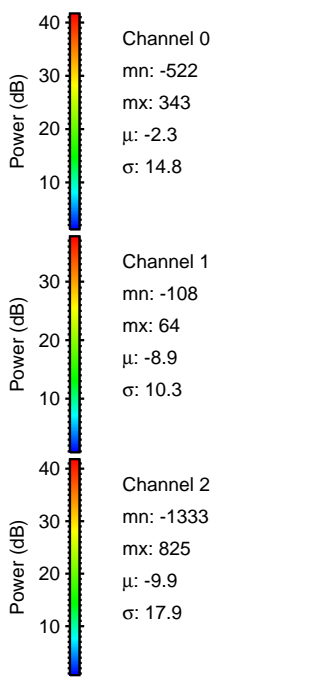
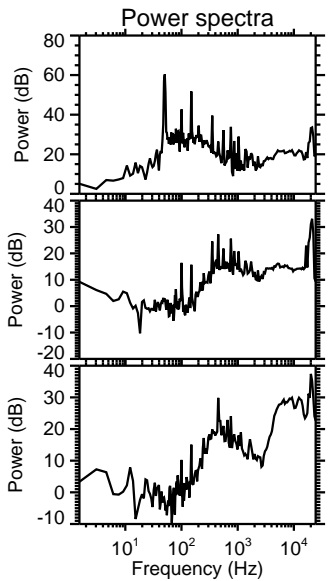
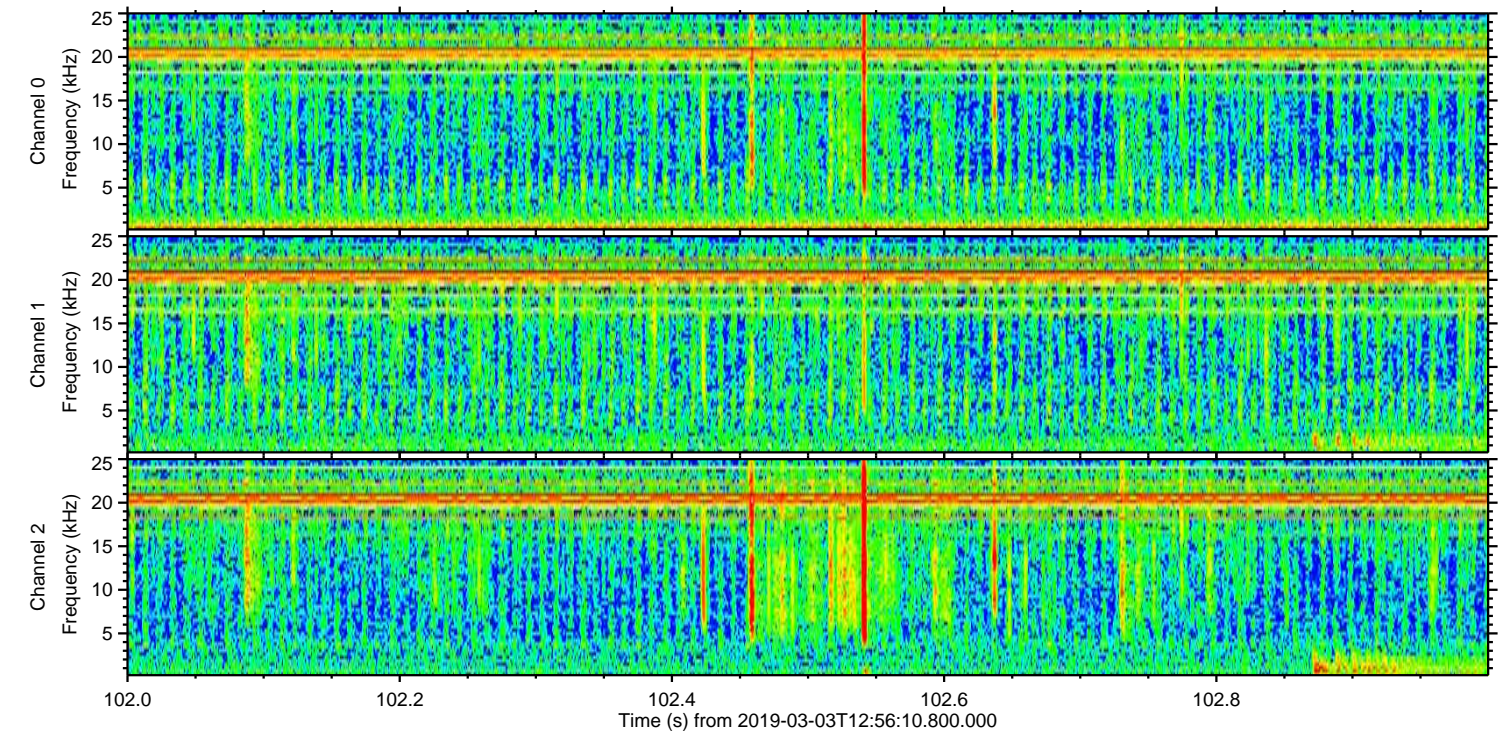
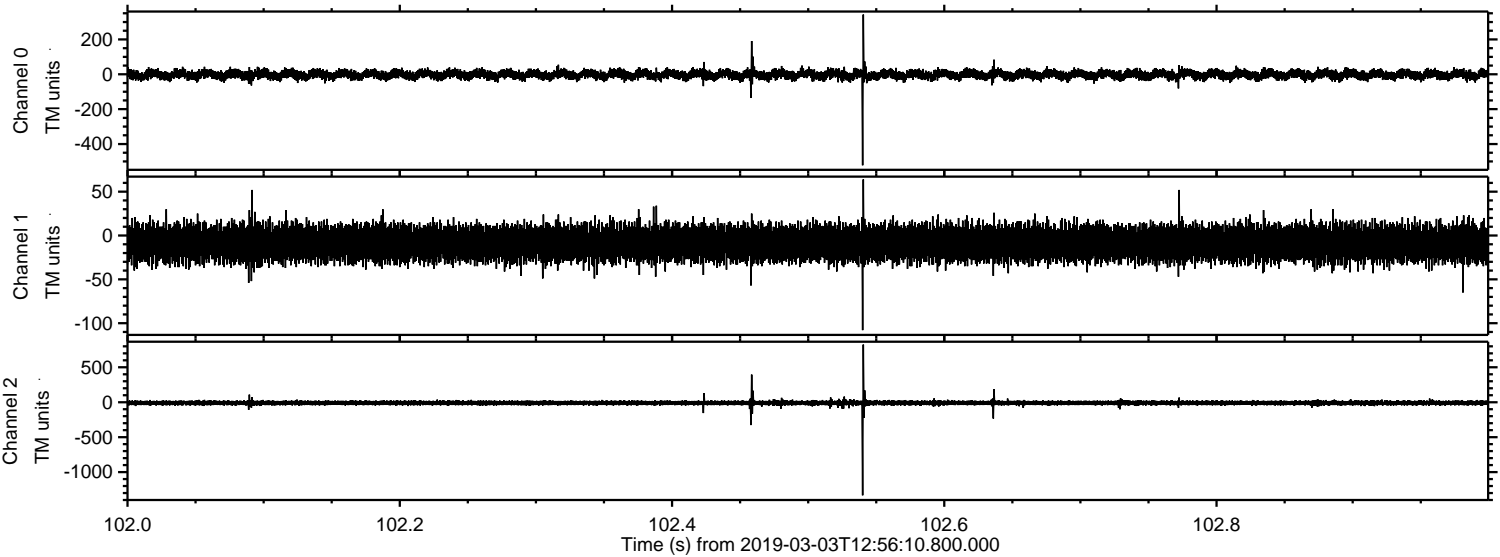


Processed Sun Mar 3 14:03:57 2019 by ELM ver.2012-10-06 from 001__elm20190303_125609__dat00.bin



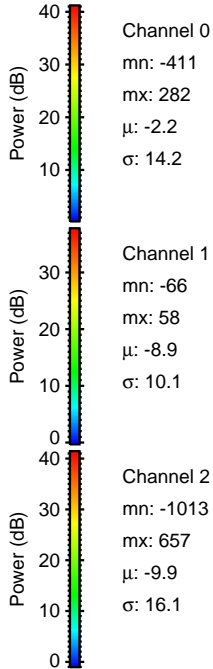
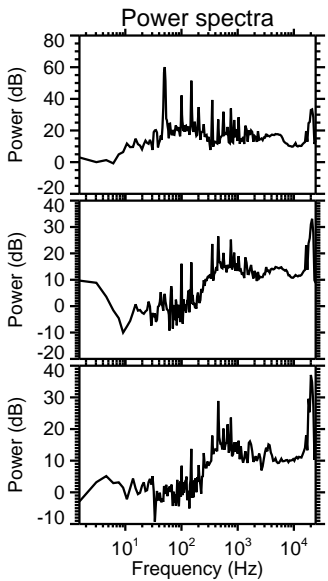
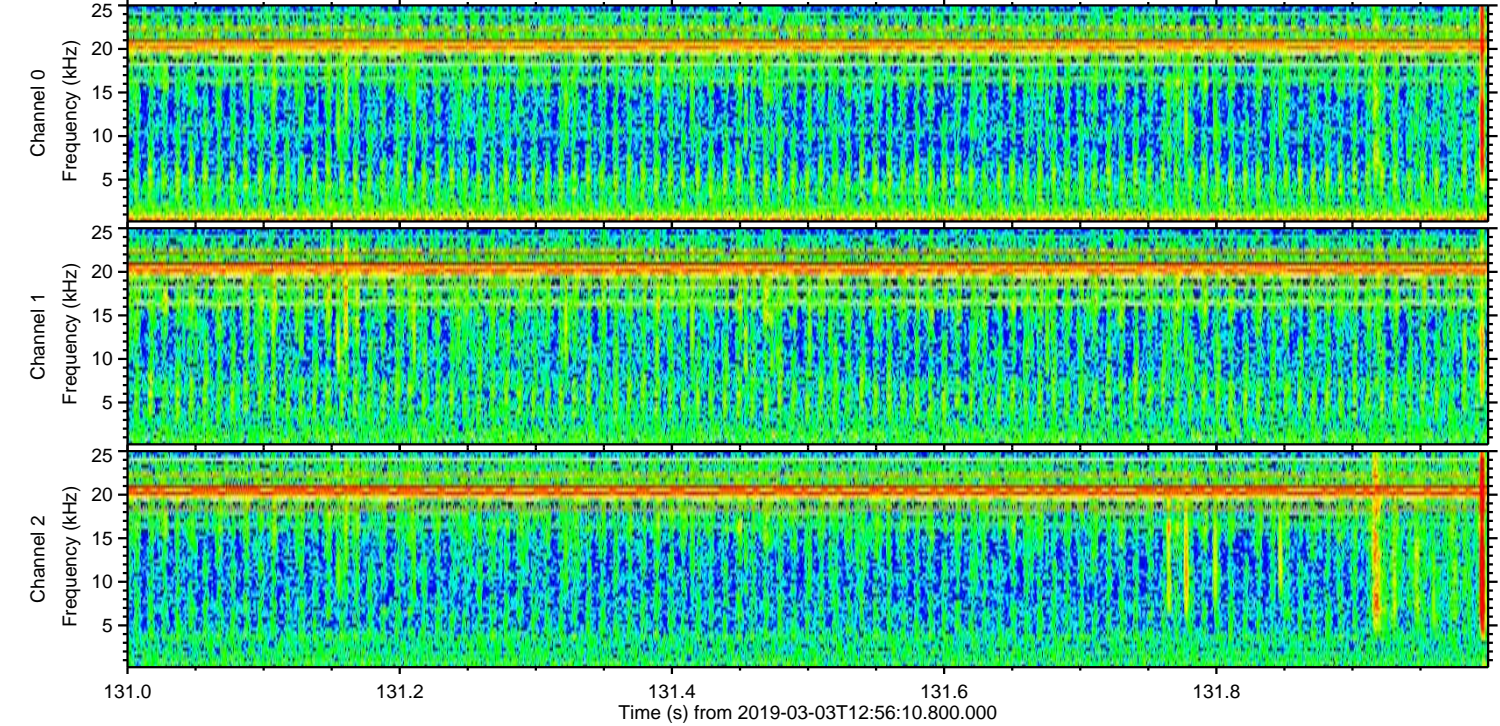
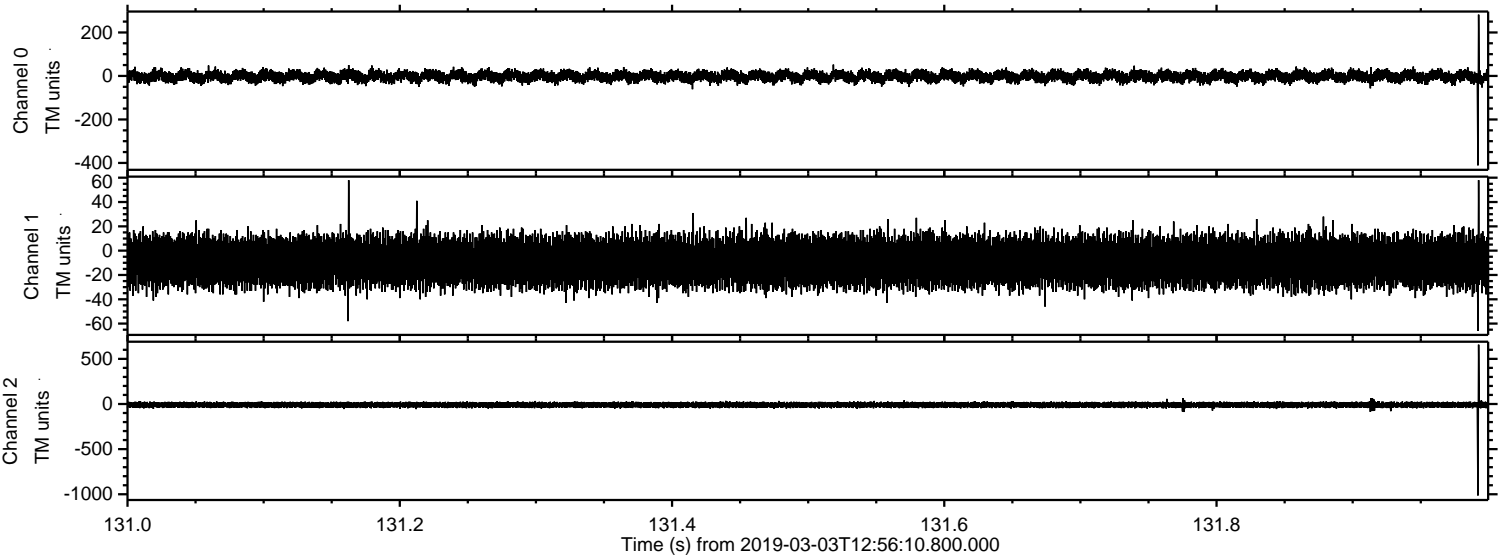
ELMAVAN 3D WAVEFORMS (Measured data sampled at 50 kHz) 51000 packets of 144 samples from 2019-03-03T12:56:10.800.000. Part 103/147

Processed Sun Mar 3 14:03:58 2019 by ELM ver.2012-10-06 from 001__elm20190303_125609__dat00.bin

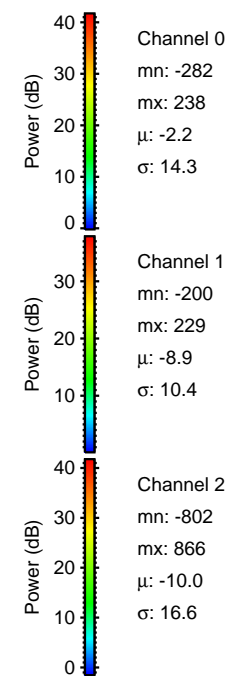
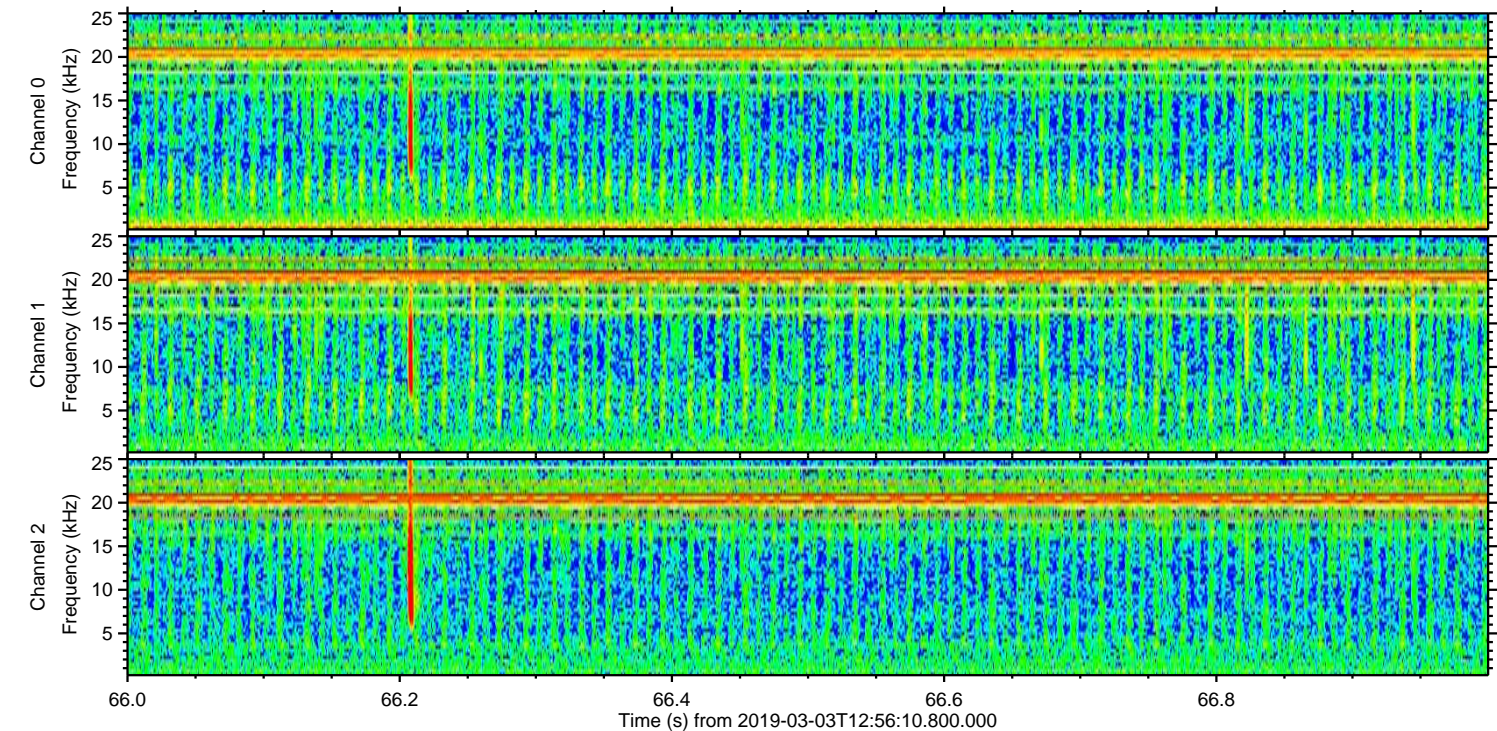
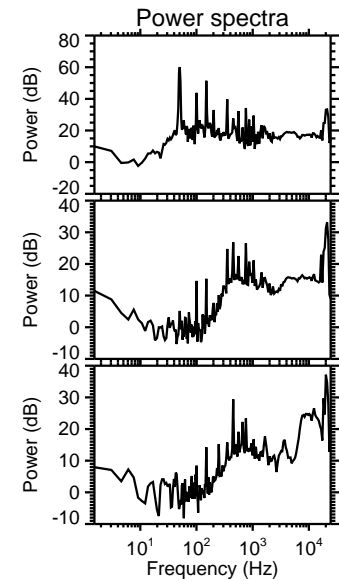
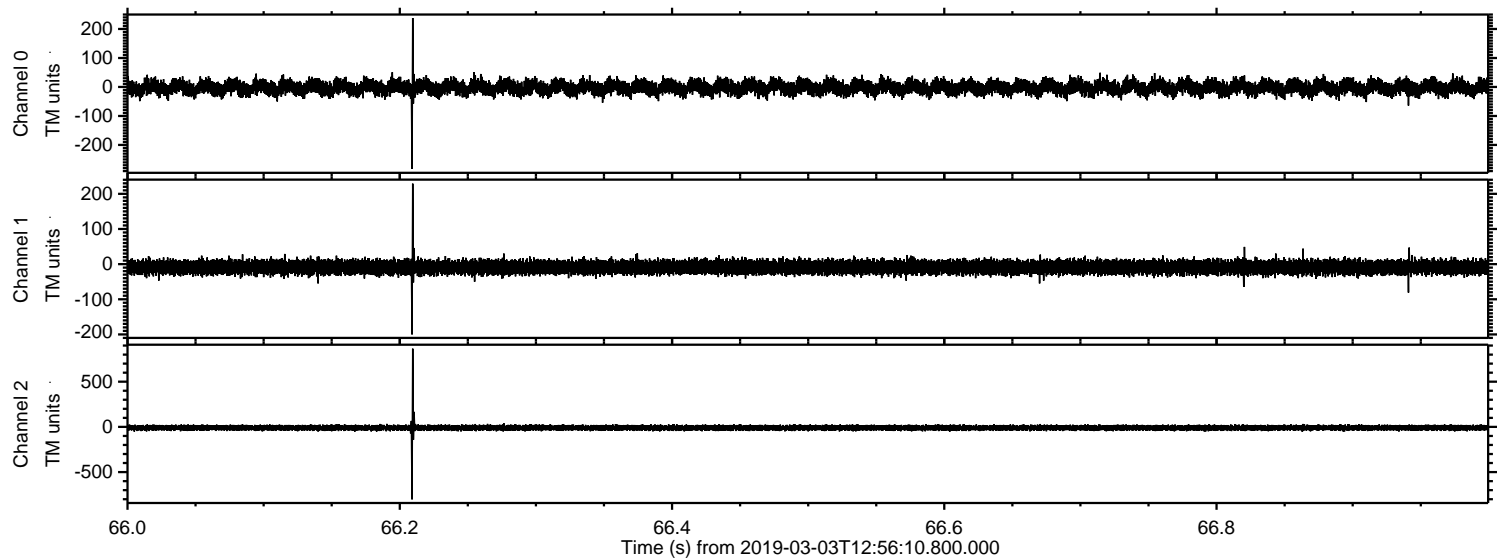


ELMAVAN 3D WAVEFORMS (Measured data sampled at 50 kHz) 51000 packets of 144 samples from 2019-03-03T12:56:10.800.000. Part 132/147

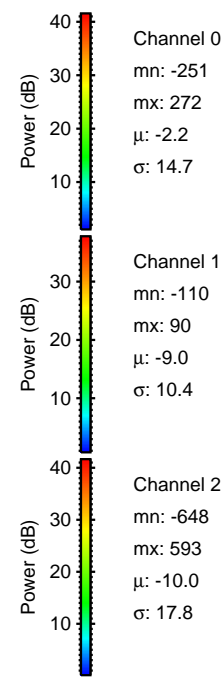
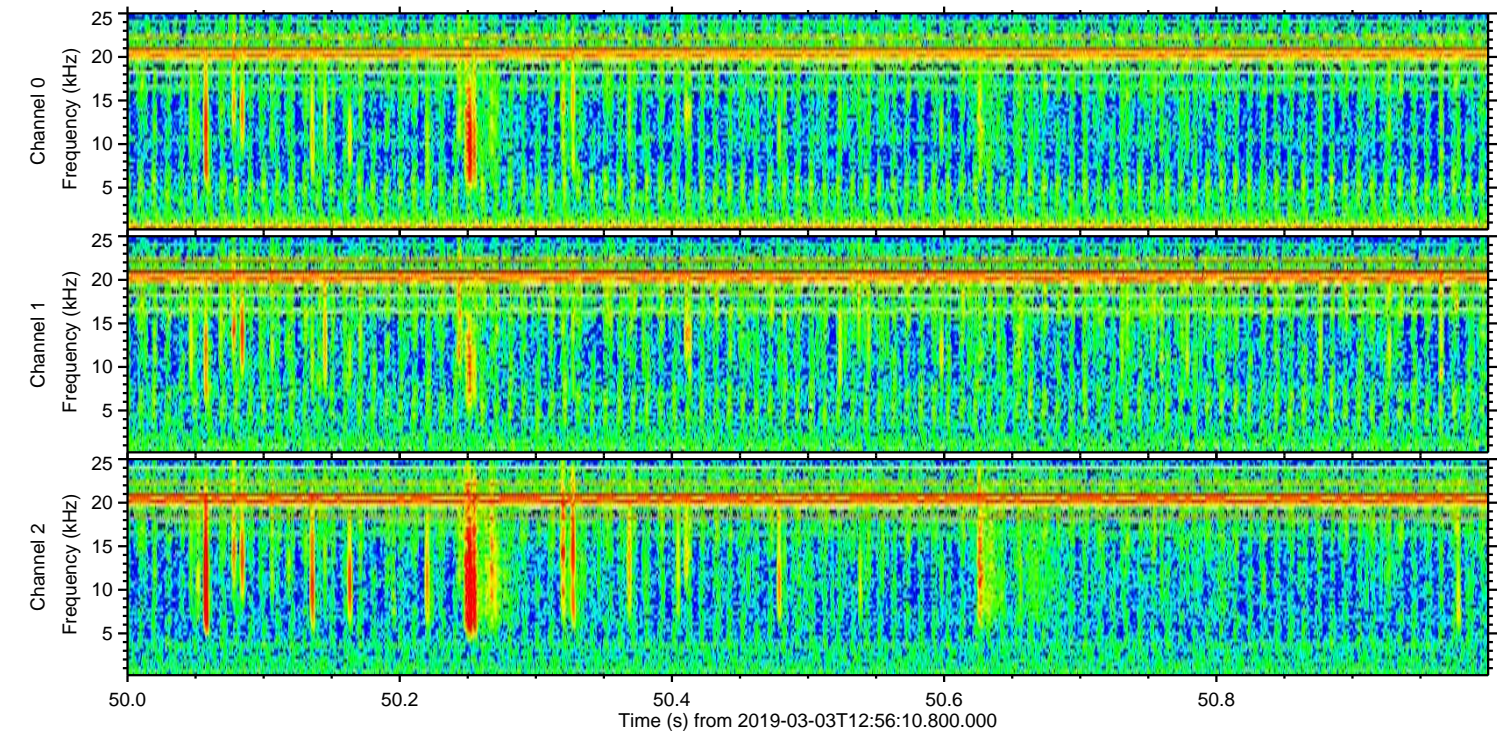
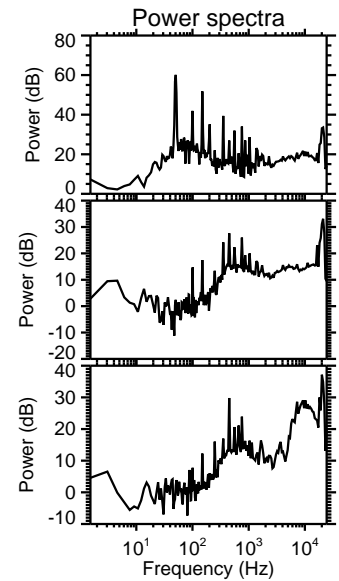
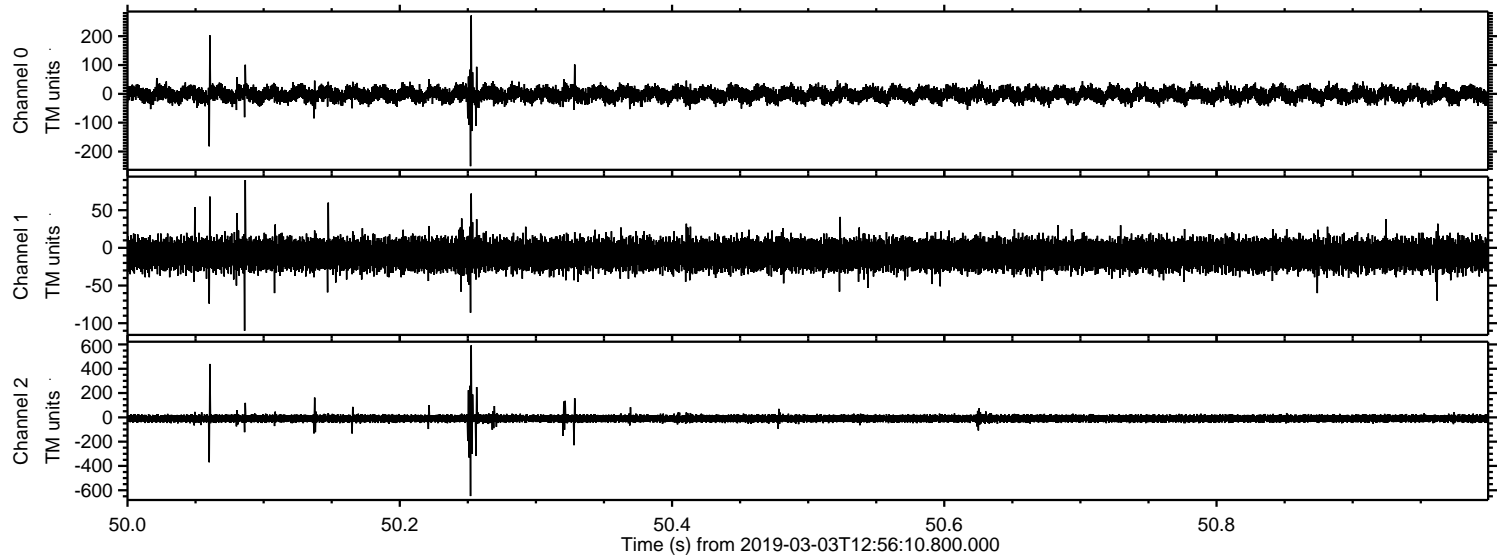
Processed Sun Mar 3 14:03:58 2019 by ELM ver.2012-10-06 from 001__elm20190303_125609__dat00.bin



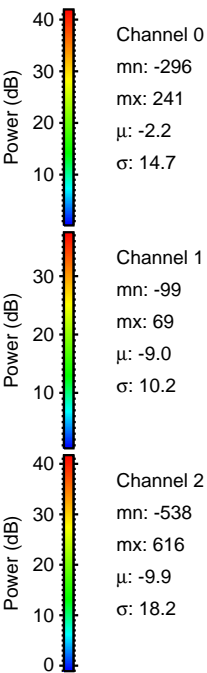
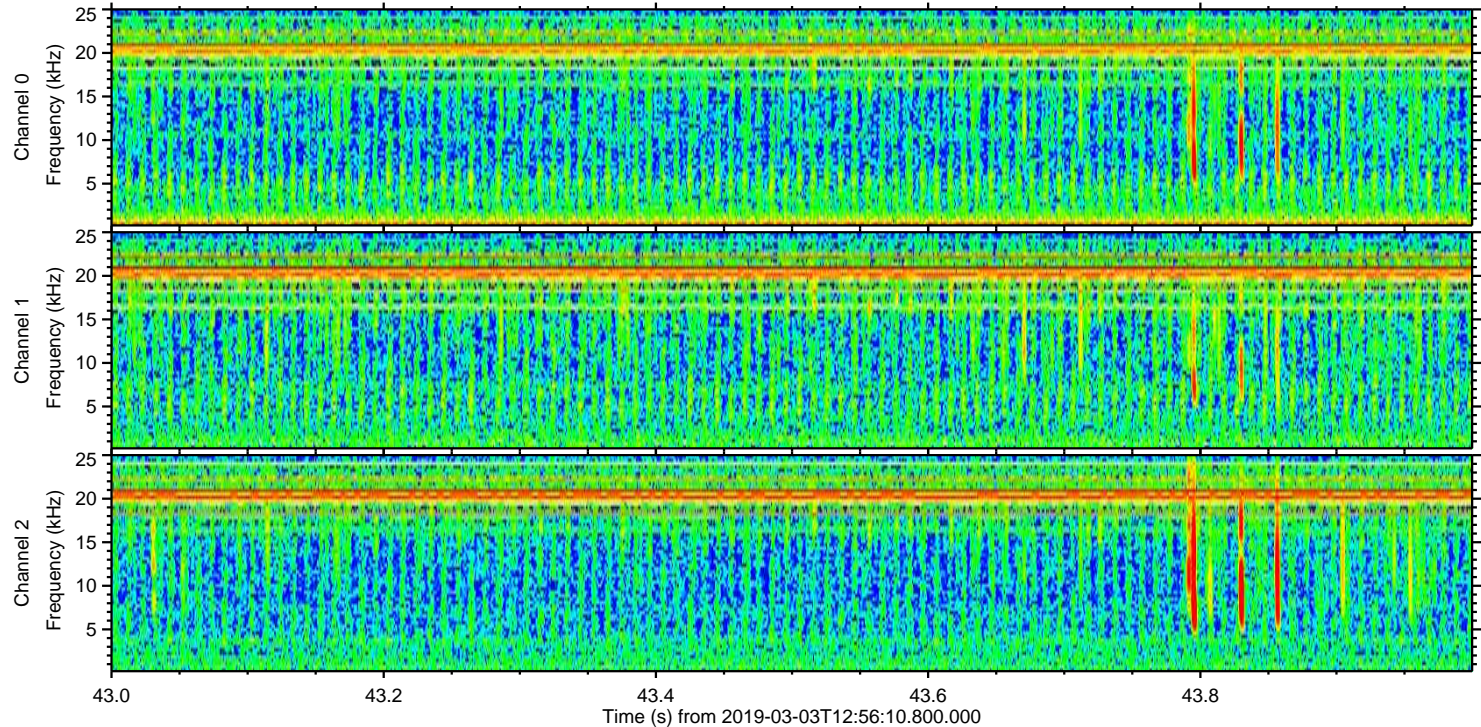
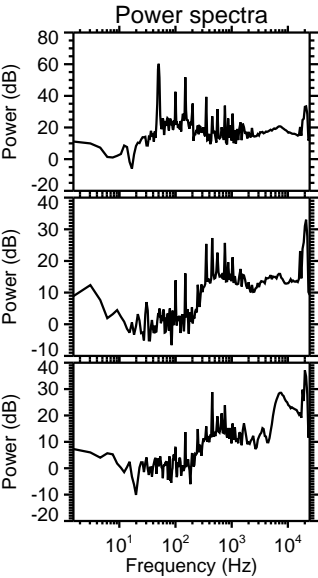
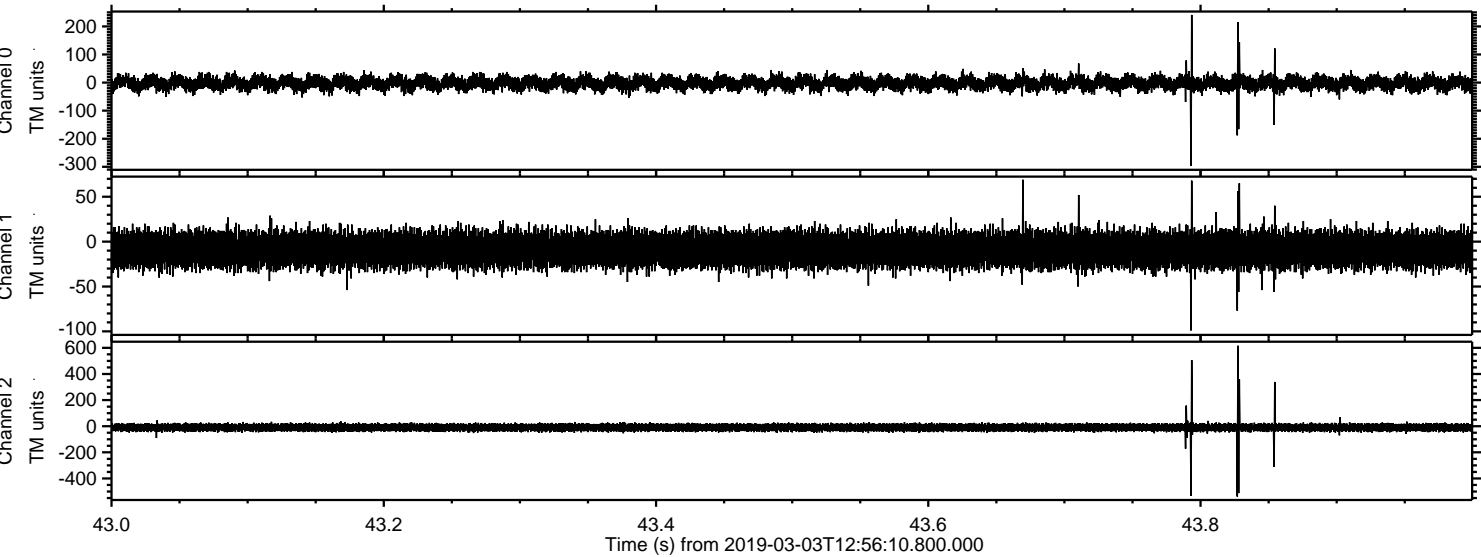
Processed Sun Mar 3 14:03:59 2019 by ELM ver.2012-10-06 from 001__elm20190303_125609__dat00.bin



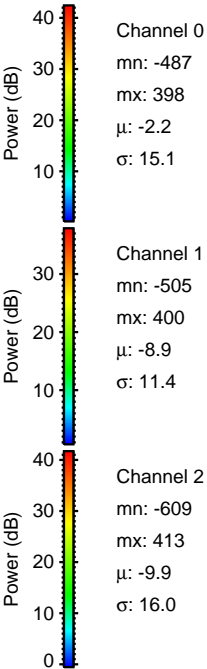
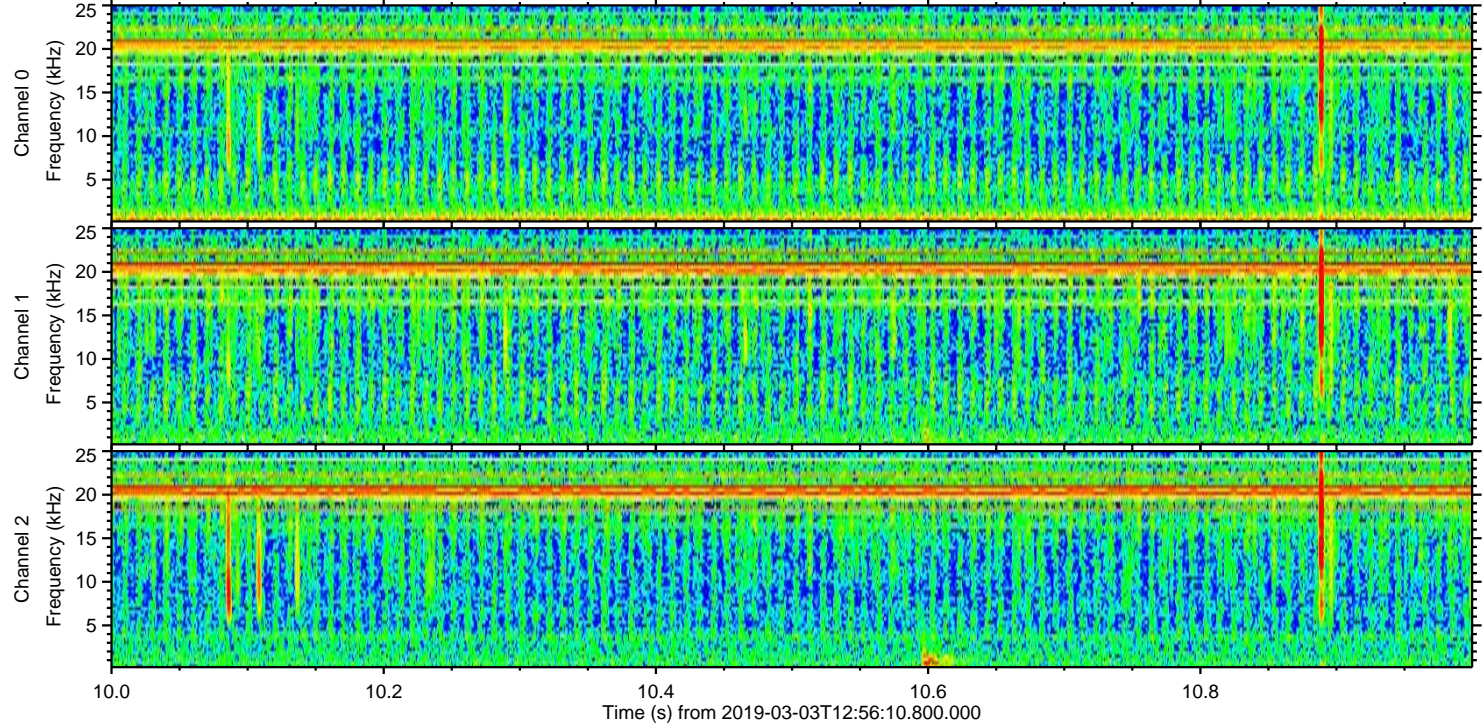
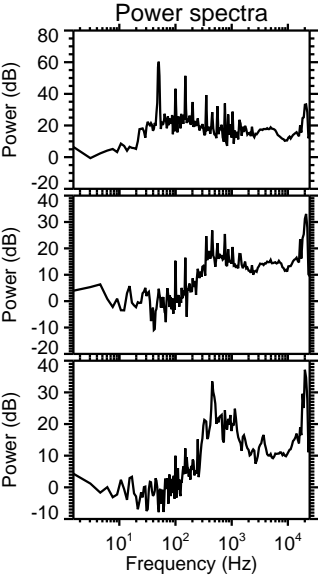
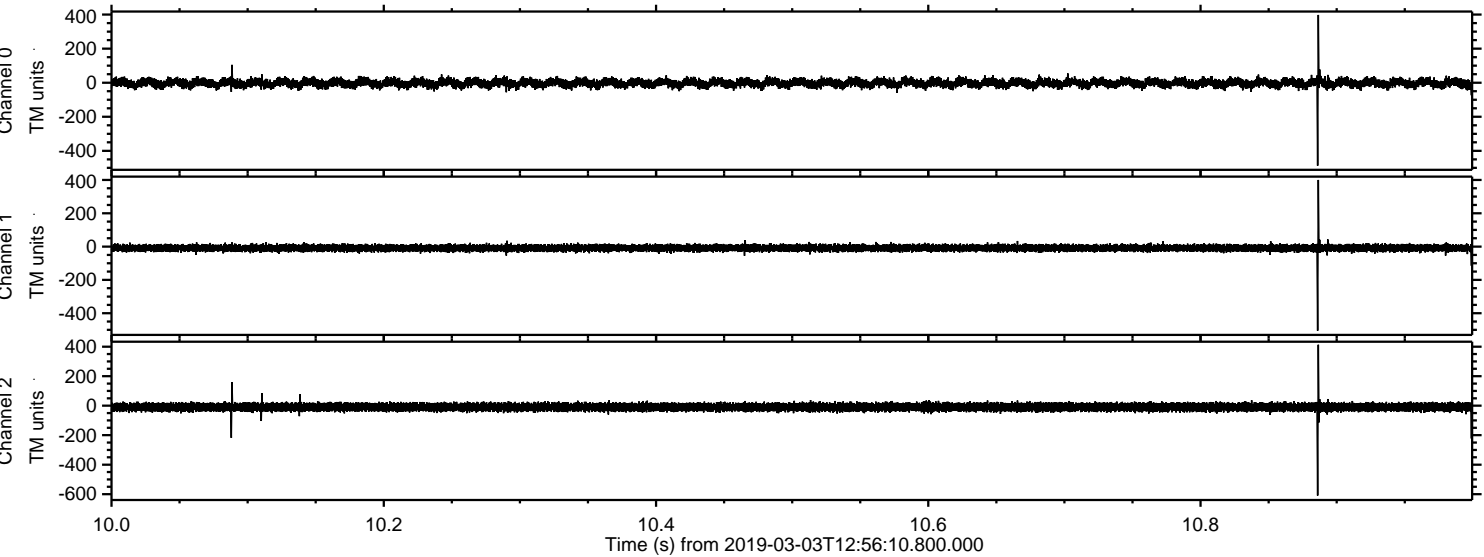
Processed Sun Mar 3 14:04:00 2019 by ELM ver.2012-10-06 from 001__elm20190303_125609__dat00.bin



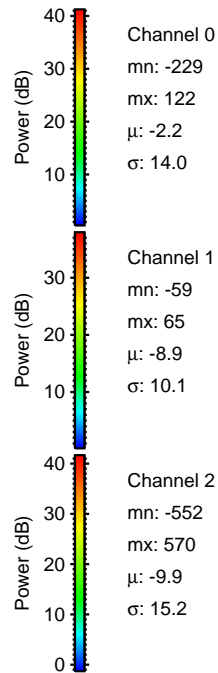
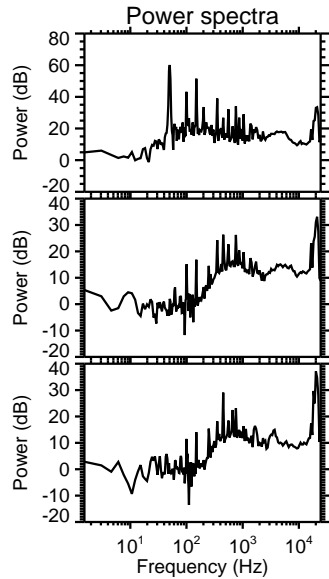
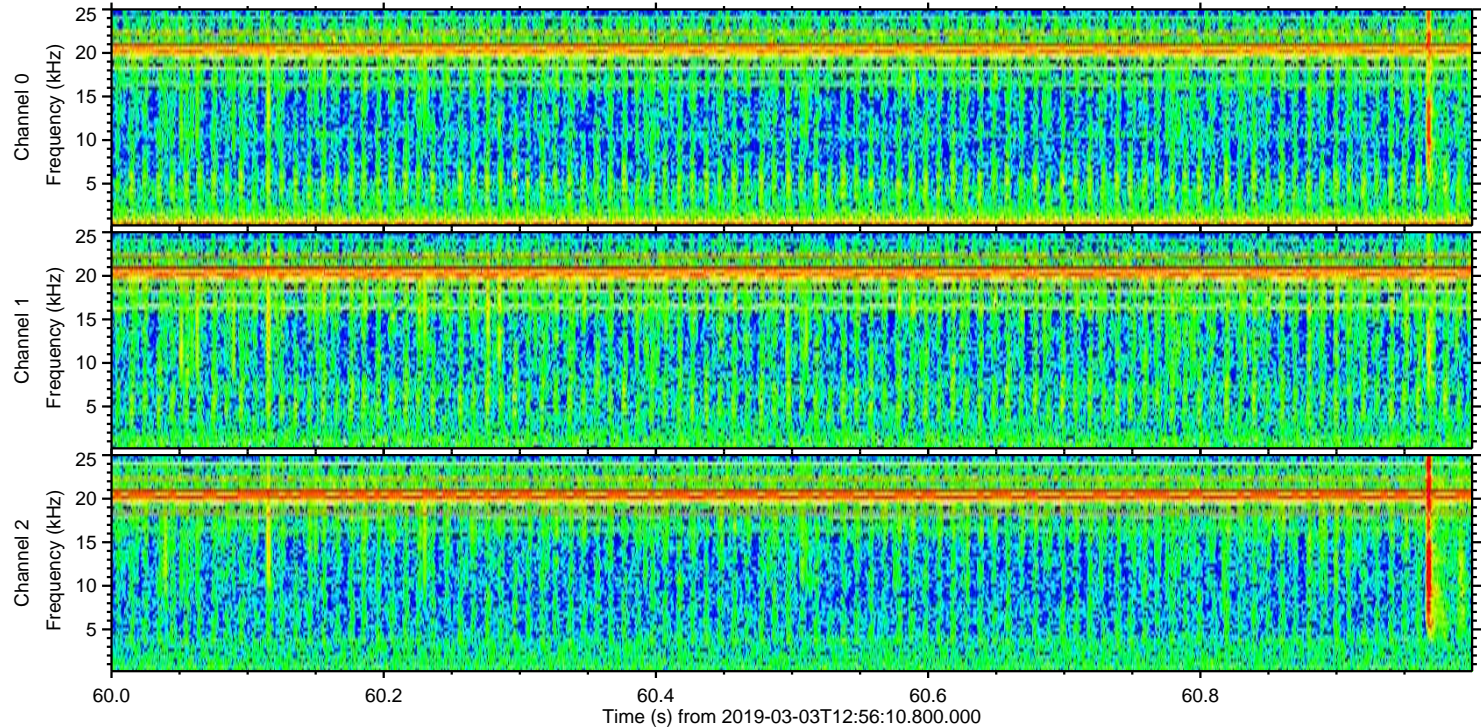
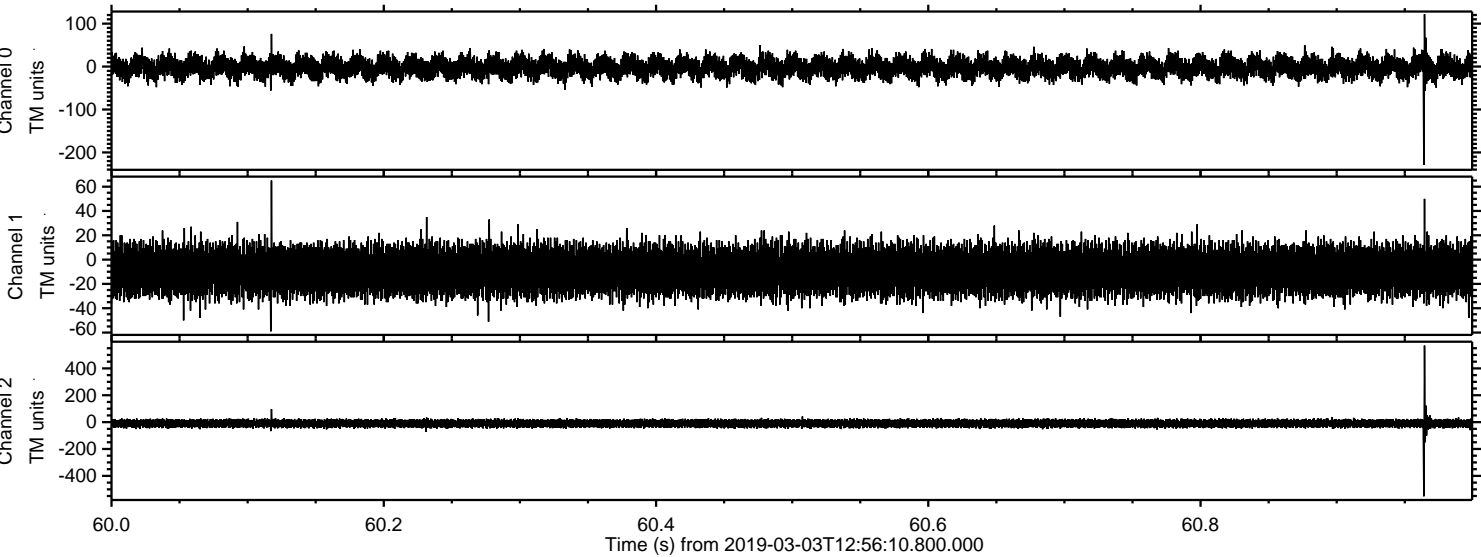
Processed Sun Mar 3 14:04:00 2019 by ELM ver.2012-10-06 from 001__elm20190303_125609__dat00.bin

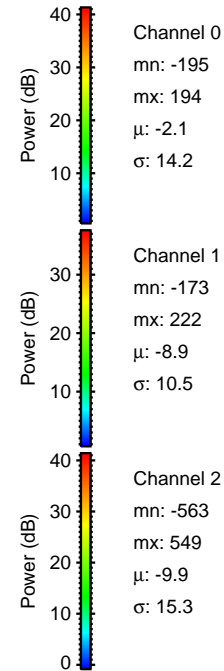
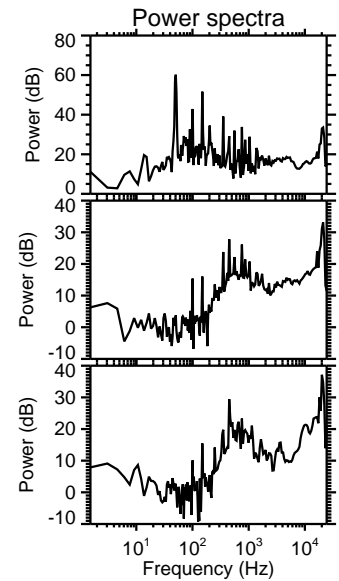
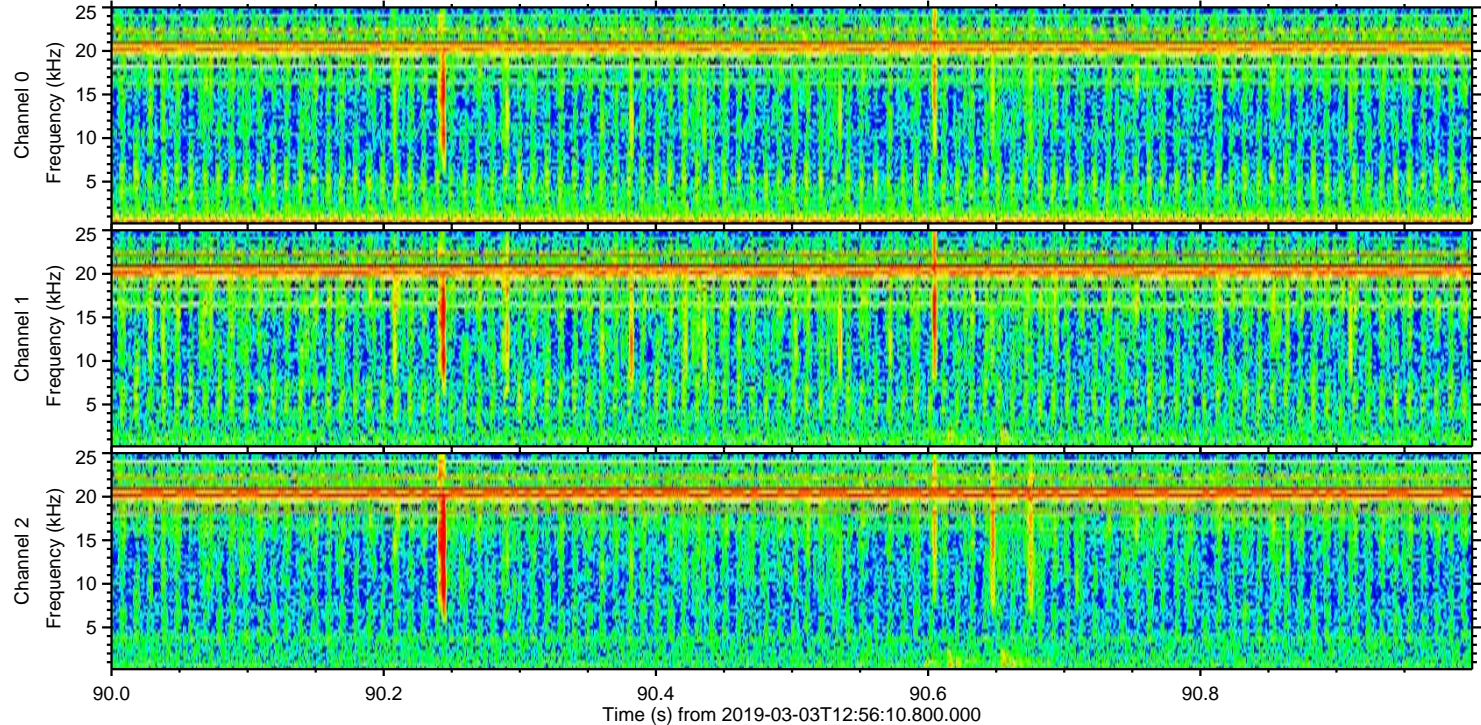
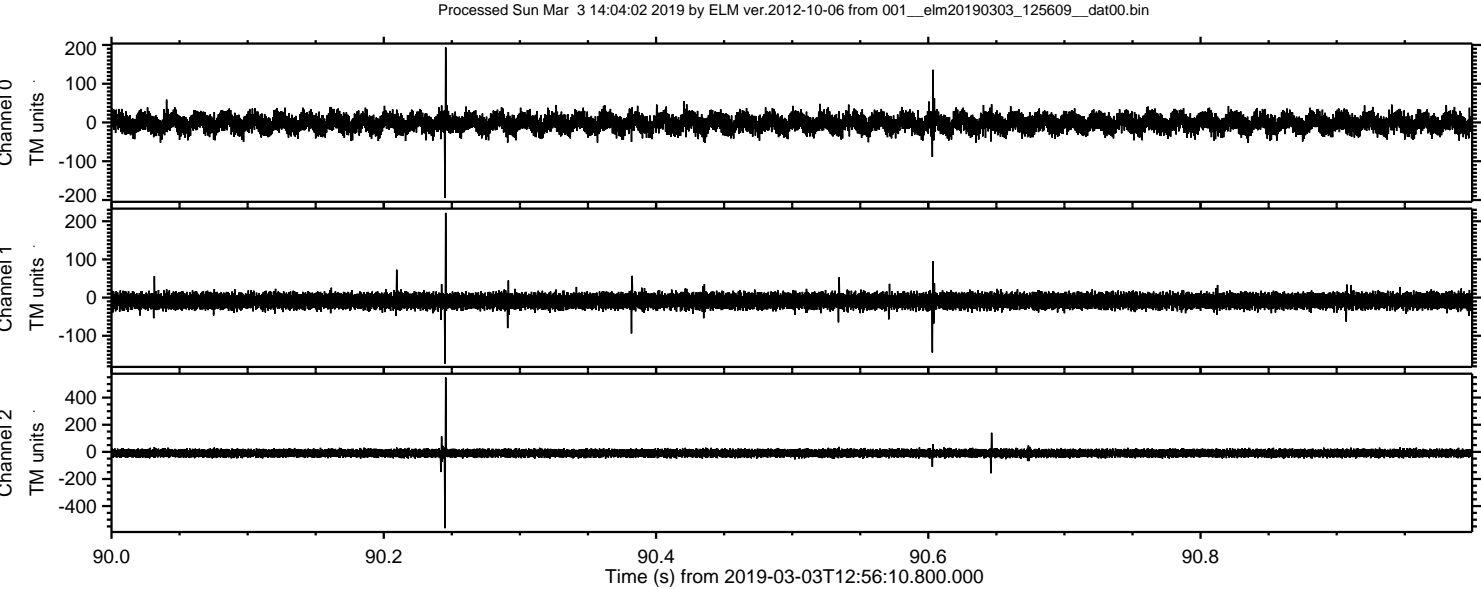


Processed Sun Mar 3 14:04:01 2019 by ELM ver.2012-10-06 from 001__elm20190303_125609__dat00.bin



Processed Sun Mar 3 14:04:02 2019 by ELM ver.2012-10-06 from 001__elm20190303_125609__dat00.bin





Processed Sun Mar 3 14:04:03 2019 by ELM ver.2012-10-06 from 001__elm20190303_125609__dat00.bin

