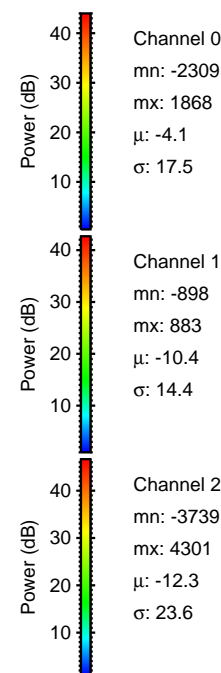
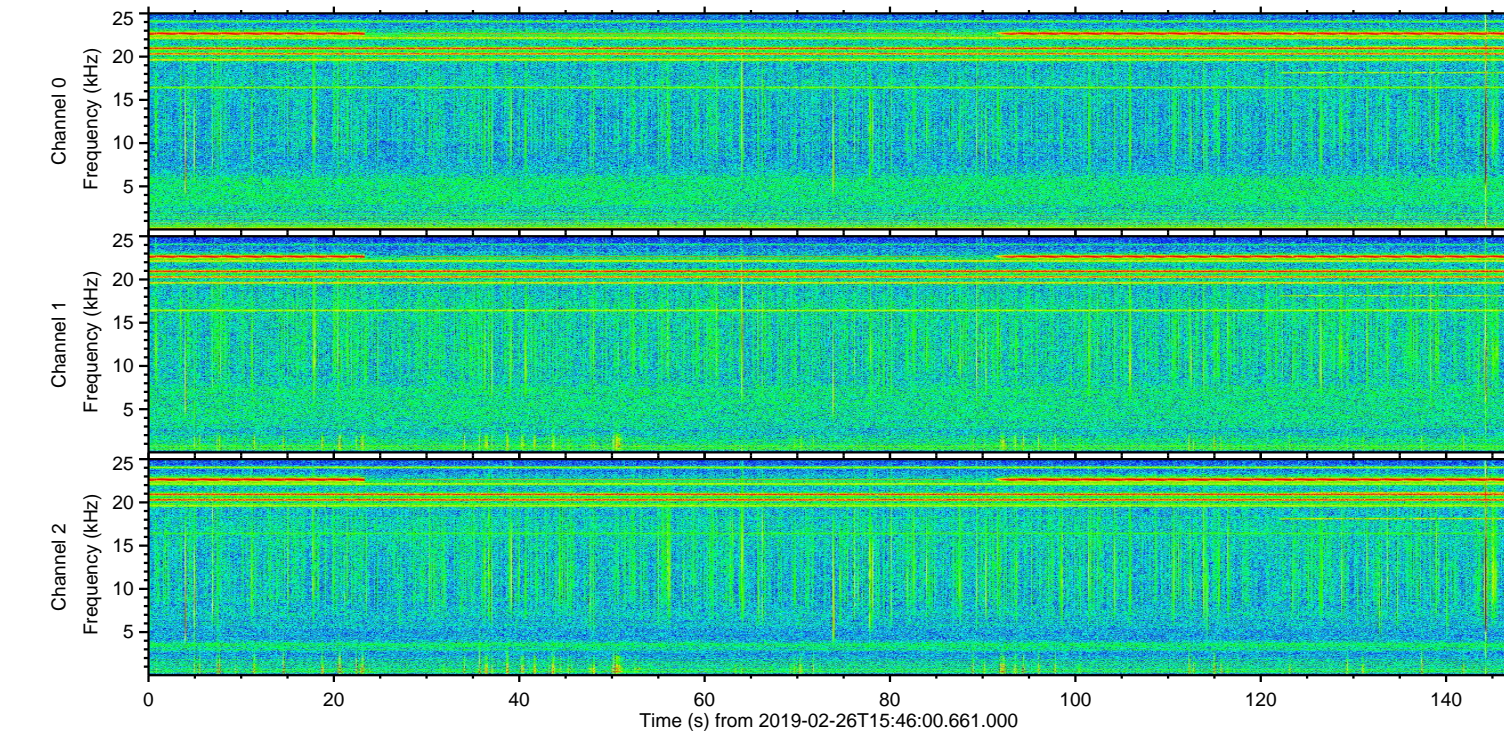
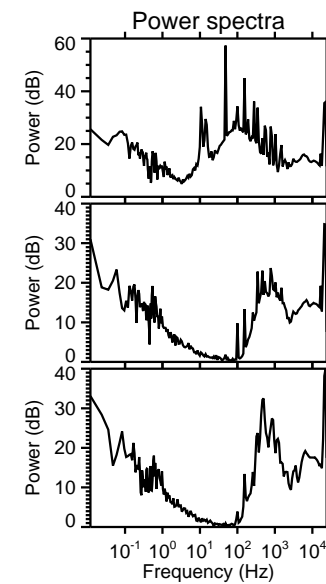
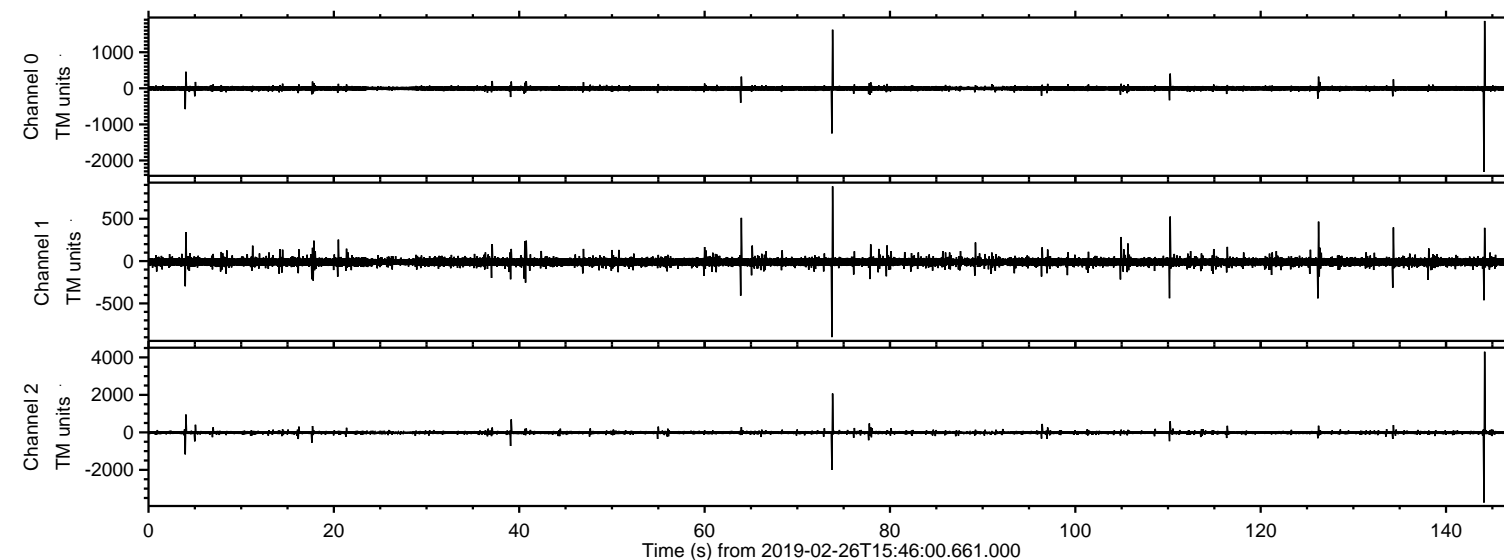


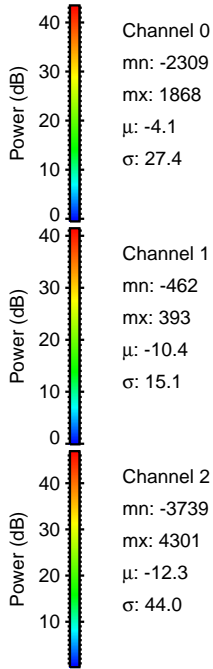
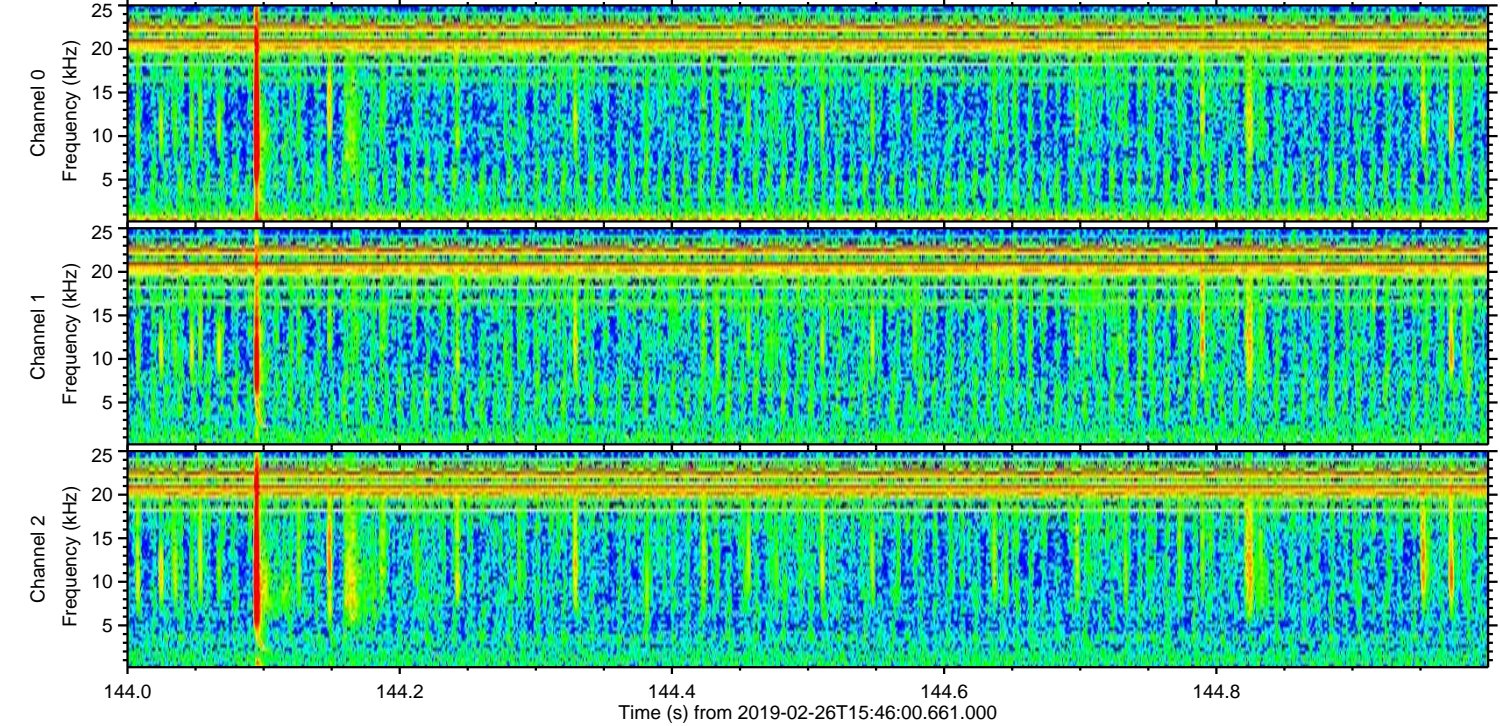
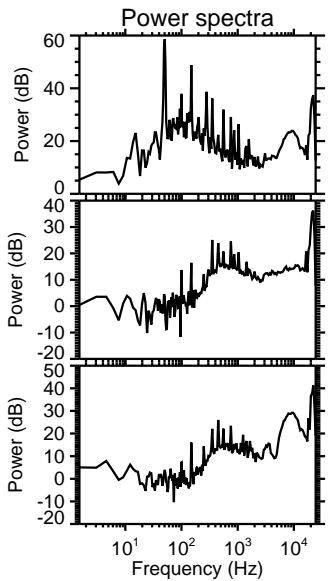
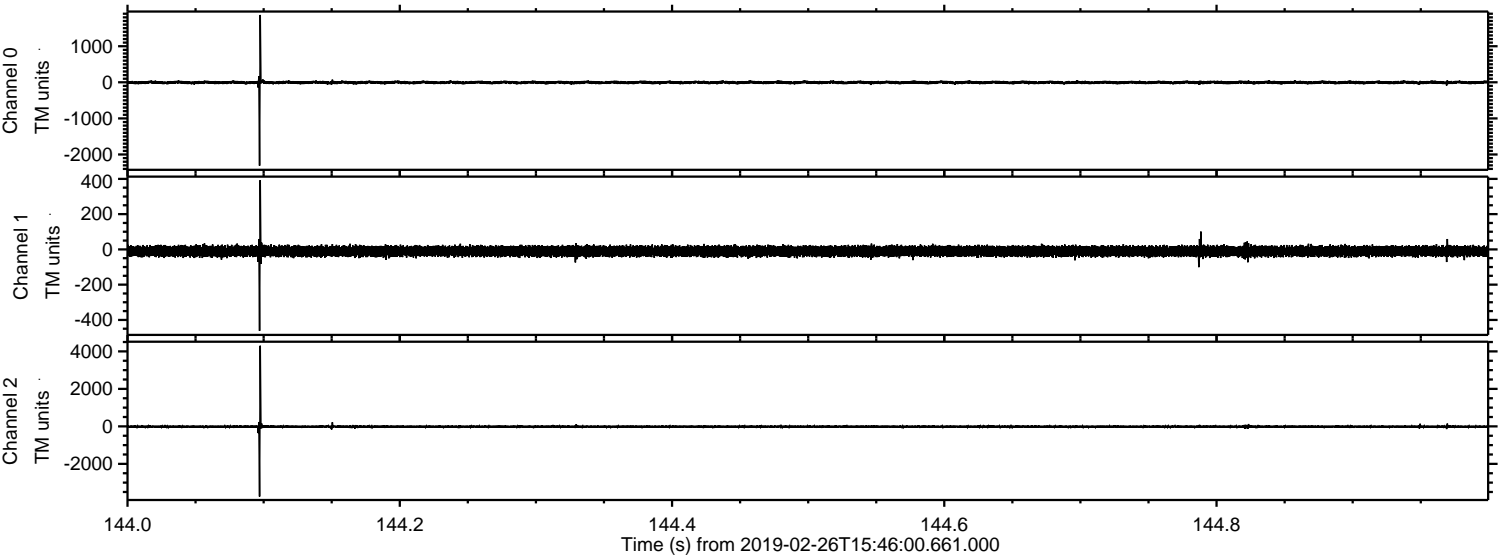
# ELMAVAN 3D WAVEFORMS (Measured data sampled at 50 kHz) 51000 packets of 144 samples from 2019-02-26T15:46:00.661.000.

Processed Tue Feb 26 16:53:47 2019 by ELM ver.2012-10-06 from 001\_\_elm20190226\_154559\_\_dat00.bin

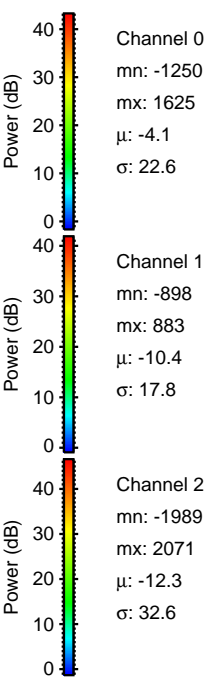
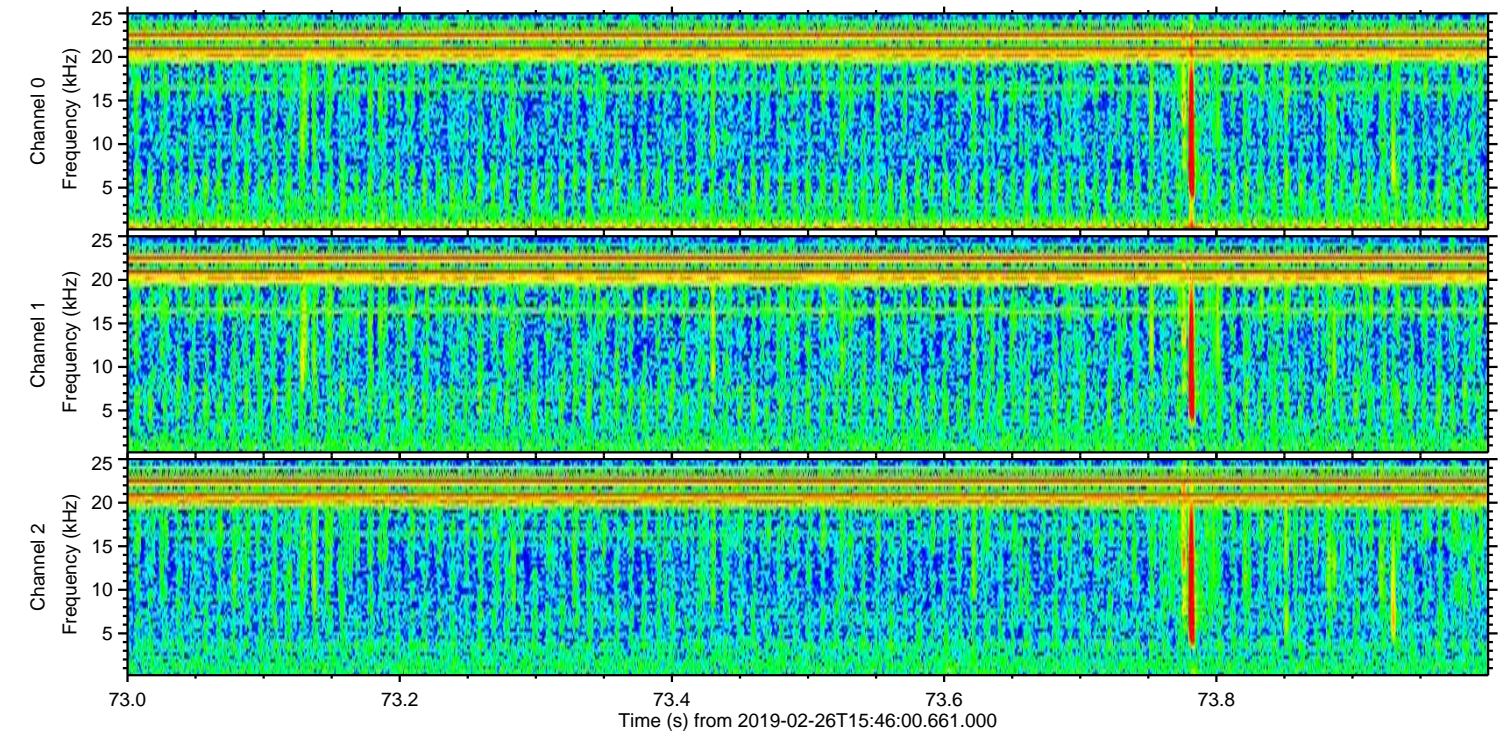
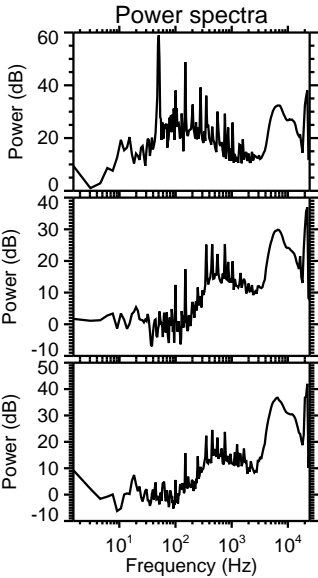
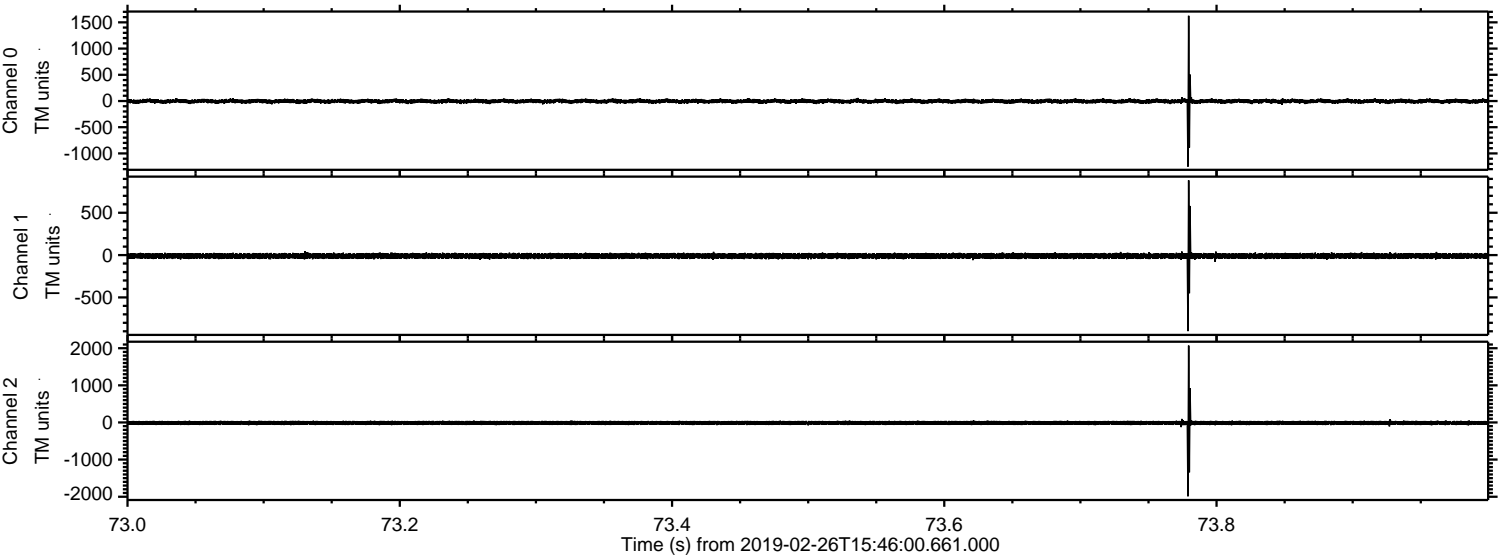


ELMAVAN 3D WAVEFORMS (Measured data sampled at 50 kHz) 51000 packets of 144 samples from 2019-02-26T15:46:00.661.000. Part 145/147

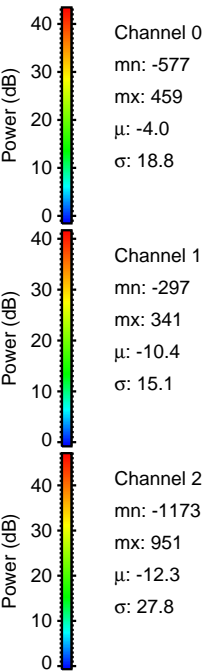
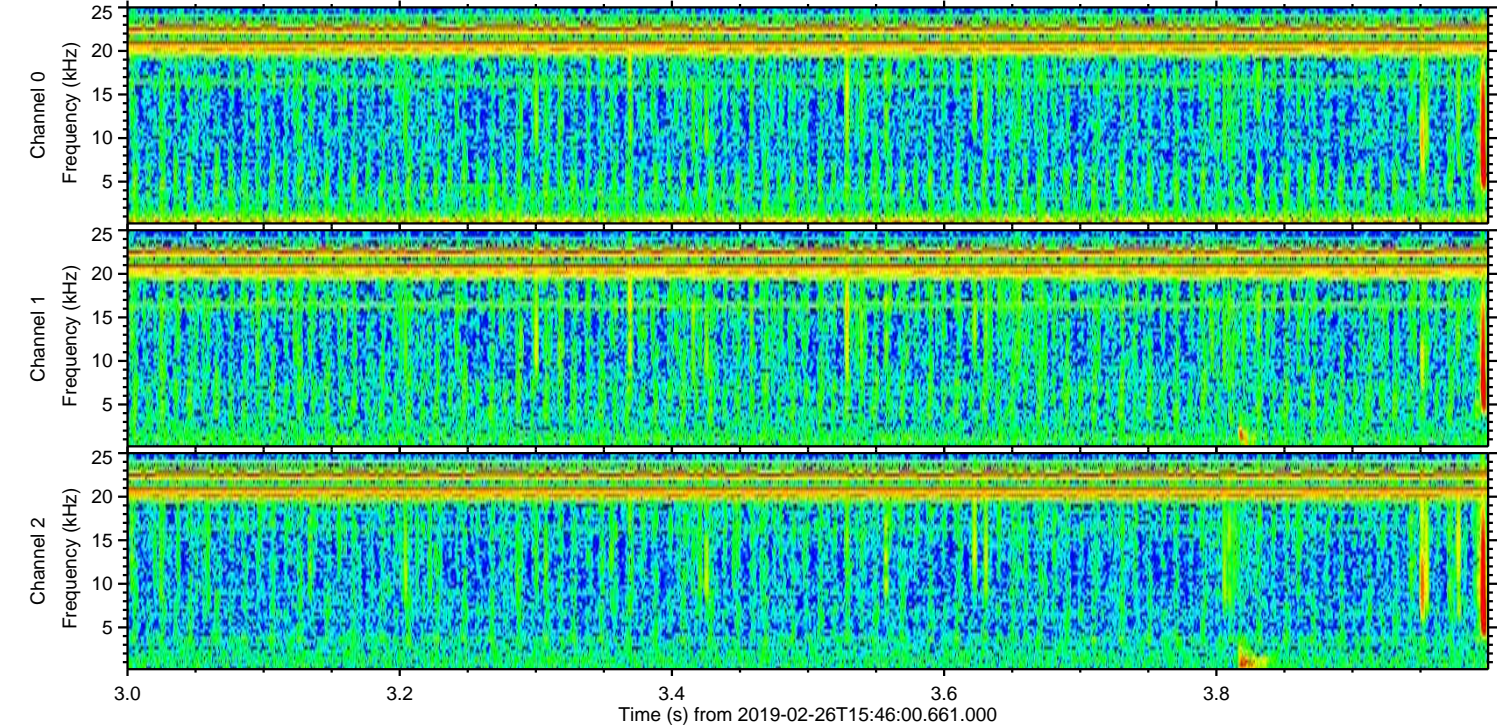
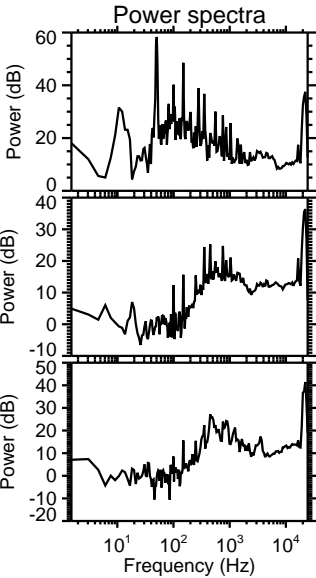
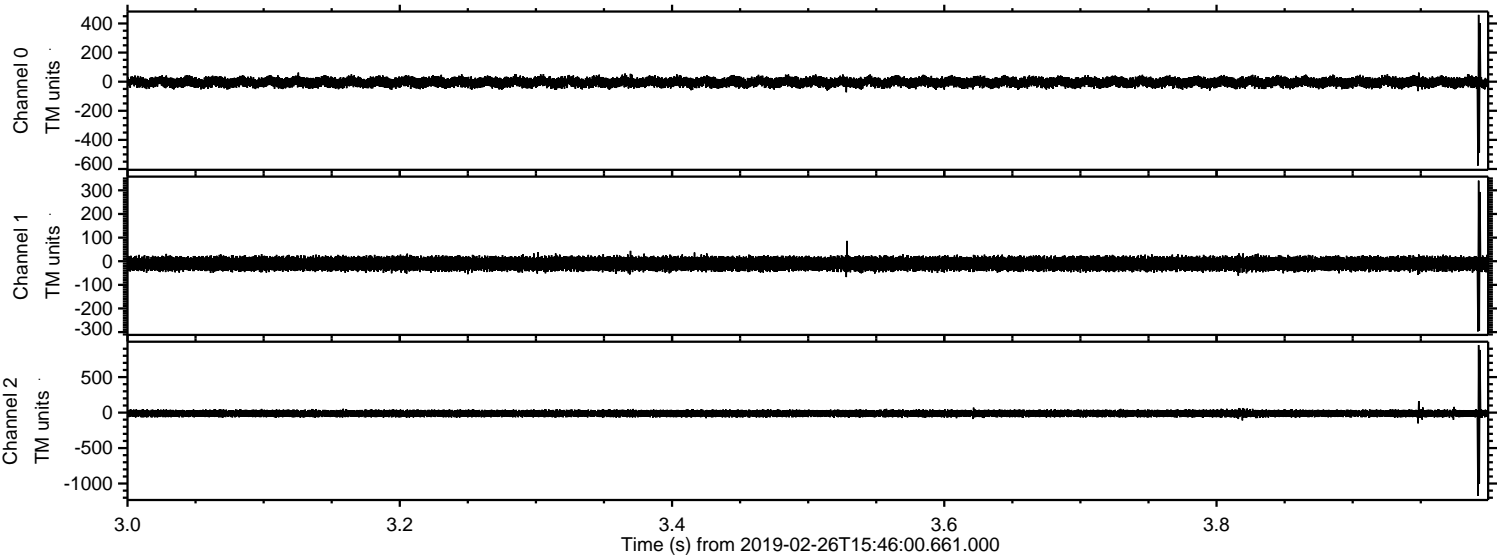
Processed Tue Feb 26 16:53:53 2019 by ELM ver.2012-10-06 from 001\_\_elm20190226\_154559\_\_dat00.bin



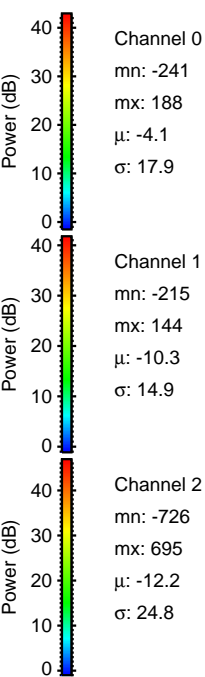
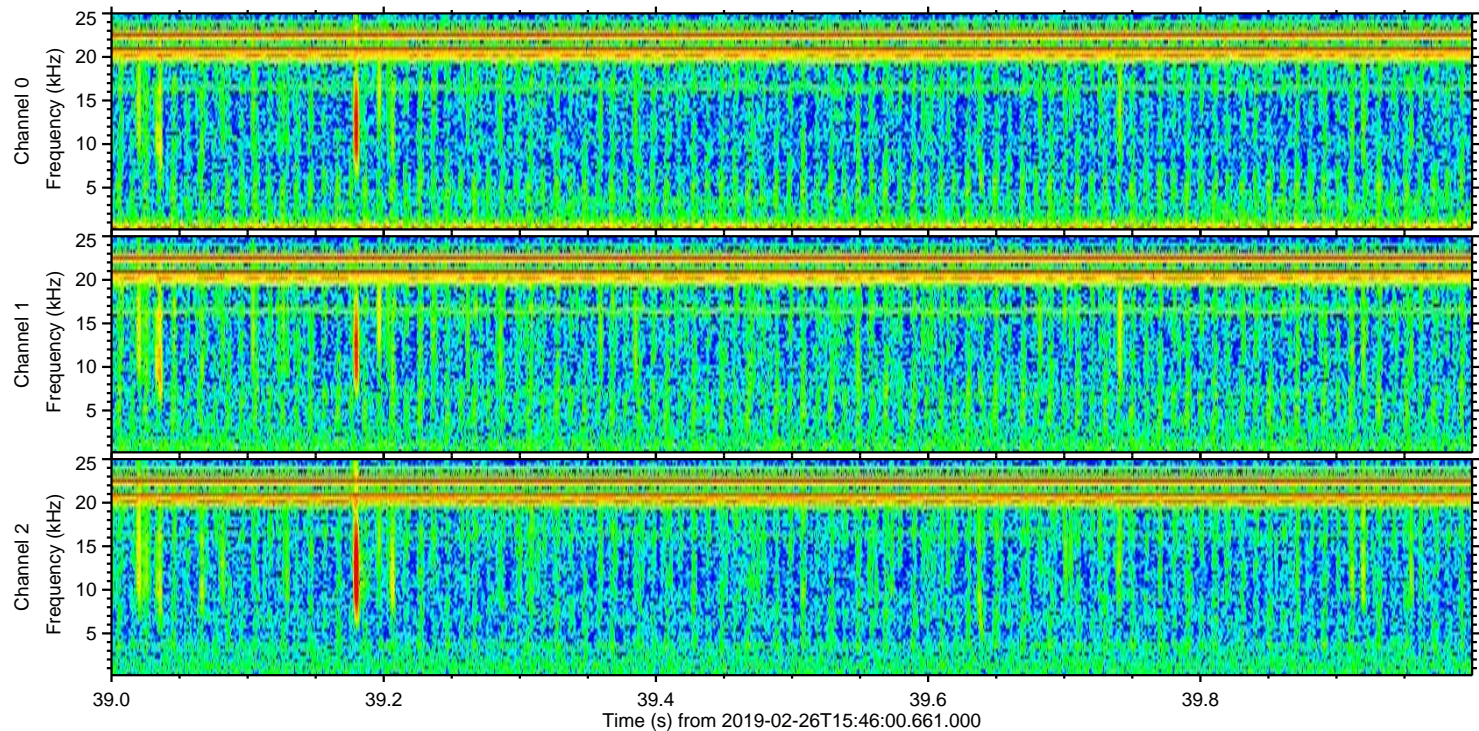
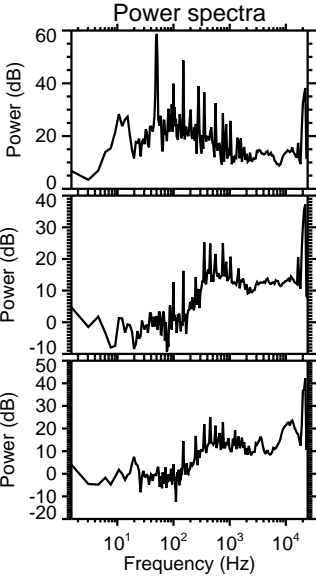
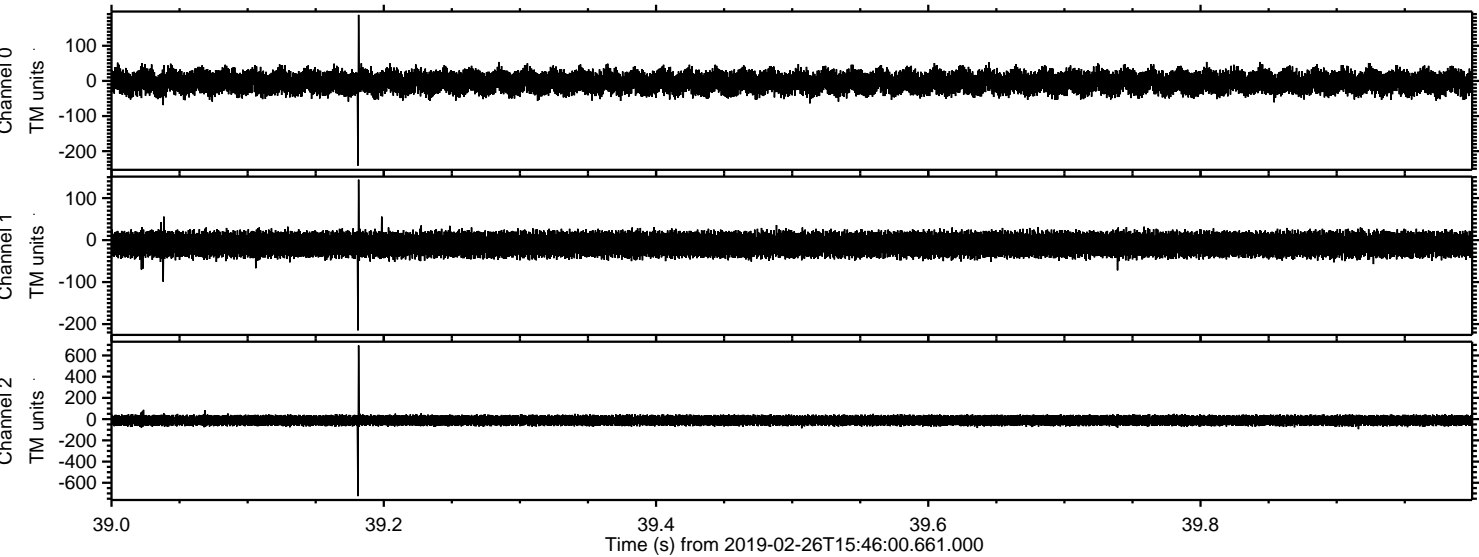
Processed Tue Feb 26 16:53:54 2019 by ELM ver.2012-10-06 from 001\_\_elm20190226\_154559\_\_dat00.bin



Processed Tue Feb 26 16:53:55 2019 by ELM ver.2012-10-06 from 001\_\_elm20190226\_154559\_\_dat00.bin

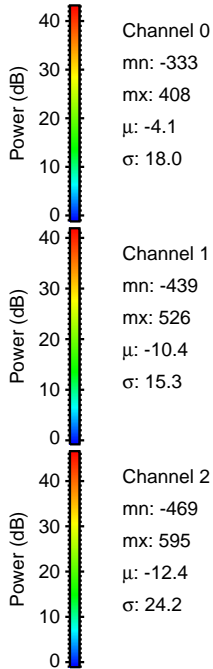
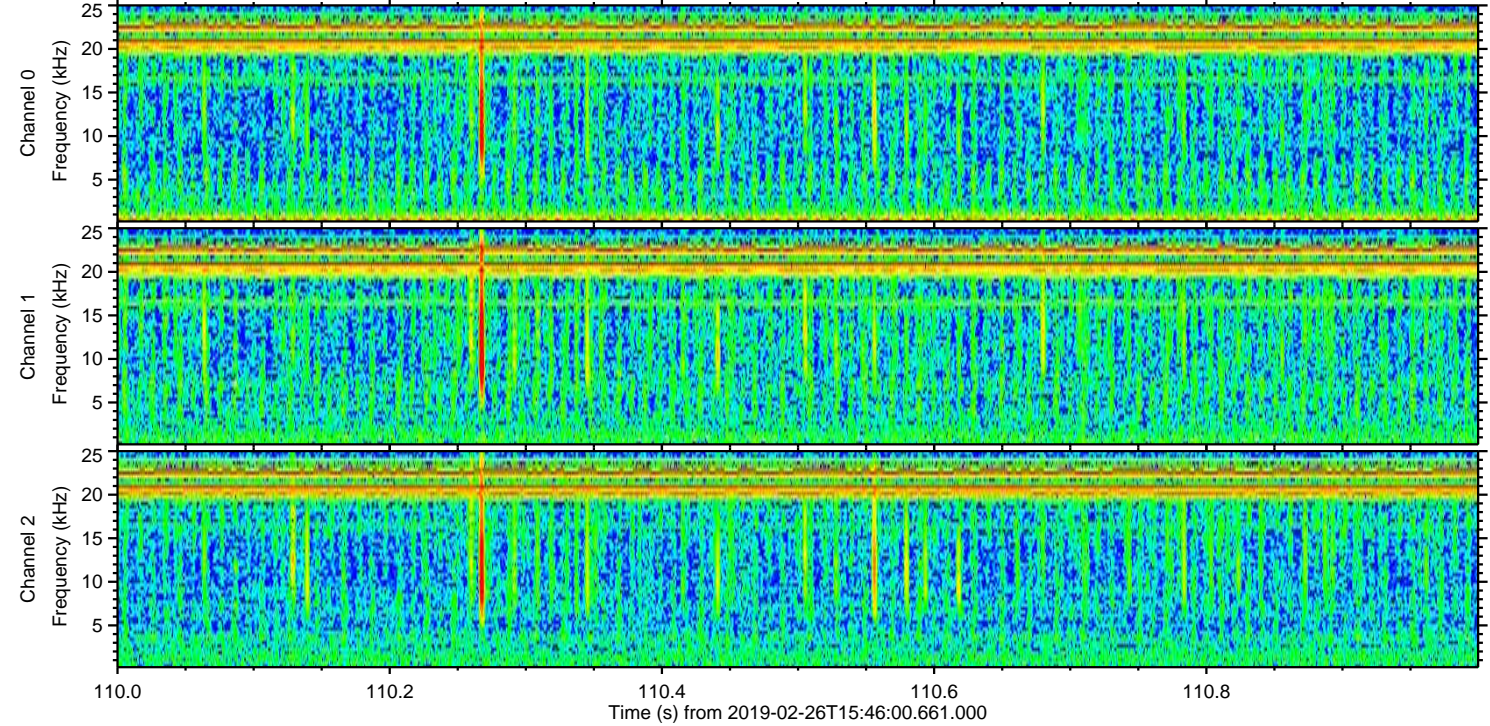
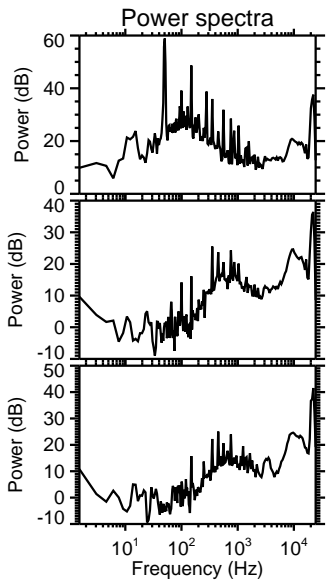
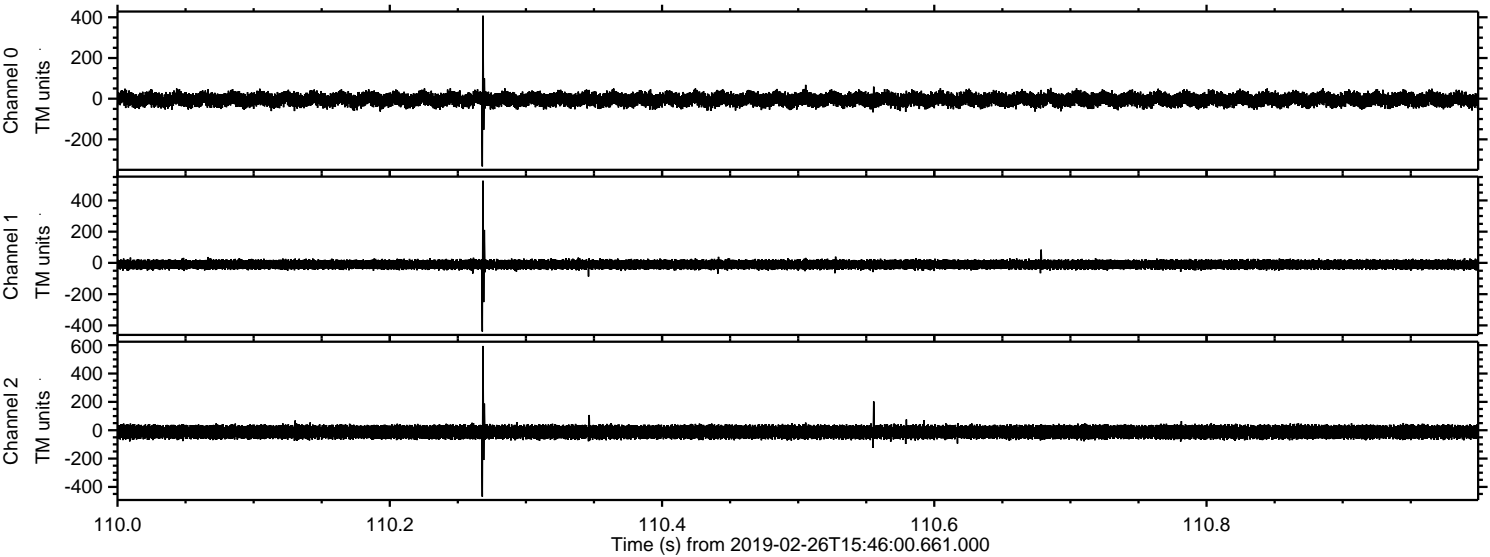


Processed Tue Feb 26 16:53:55 2019 by ELM ver.2012-10-06 from 001\_\_elm20190226\_154559\_\_dat00.bin

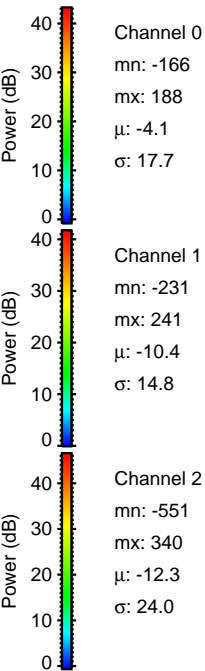
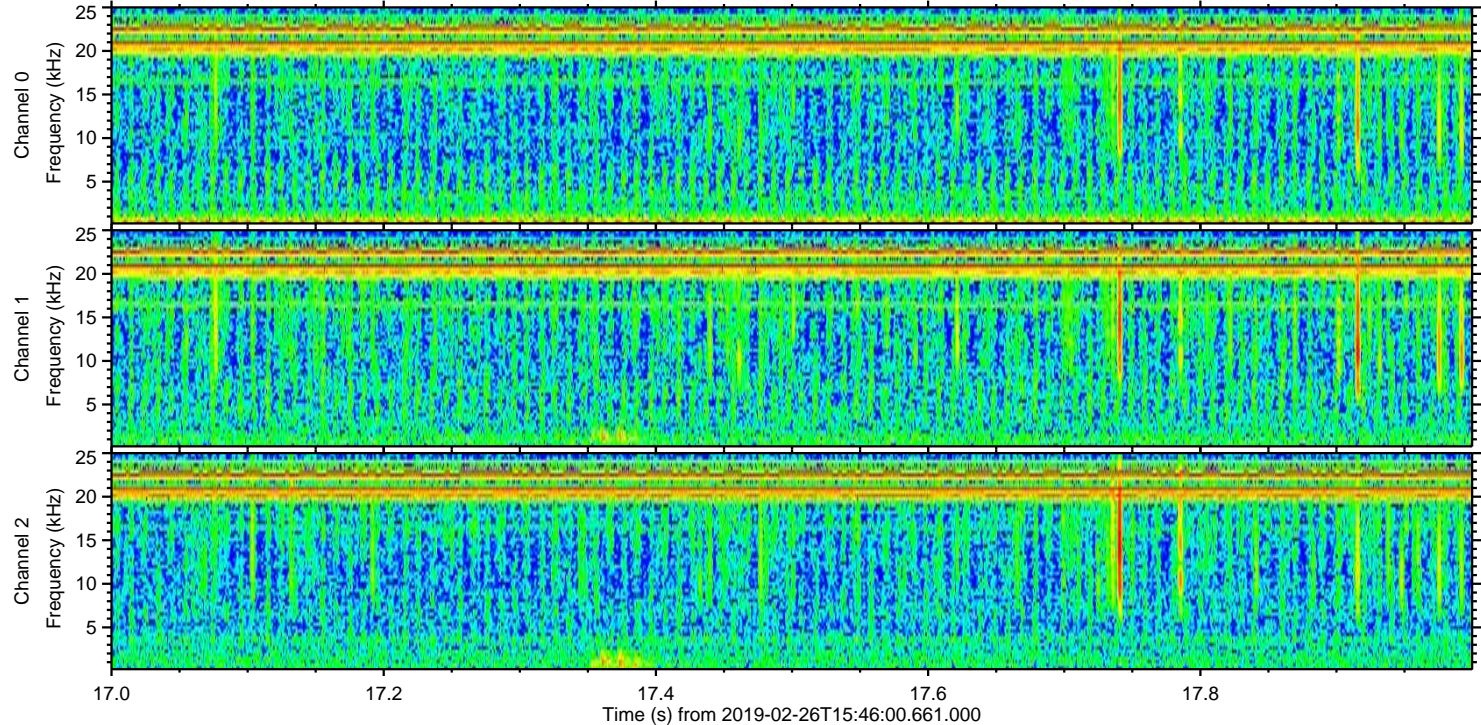
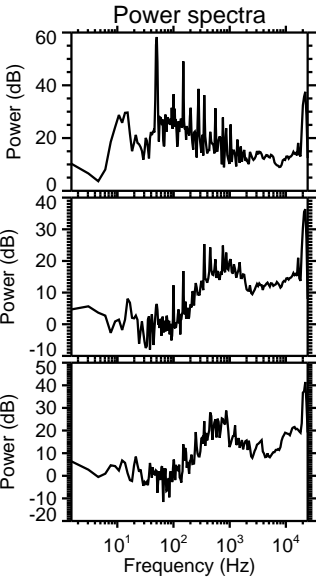
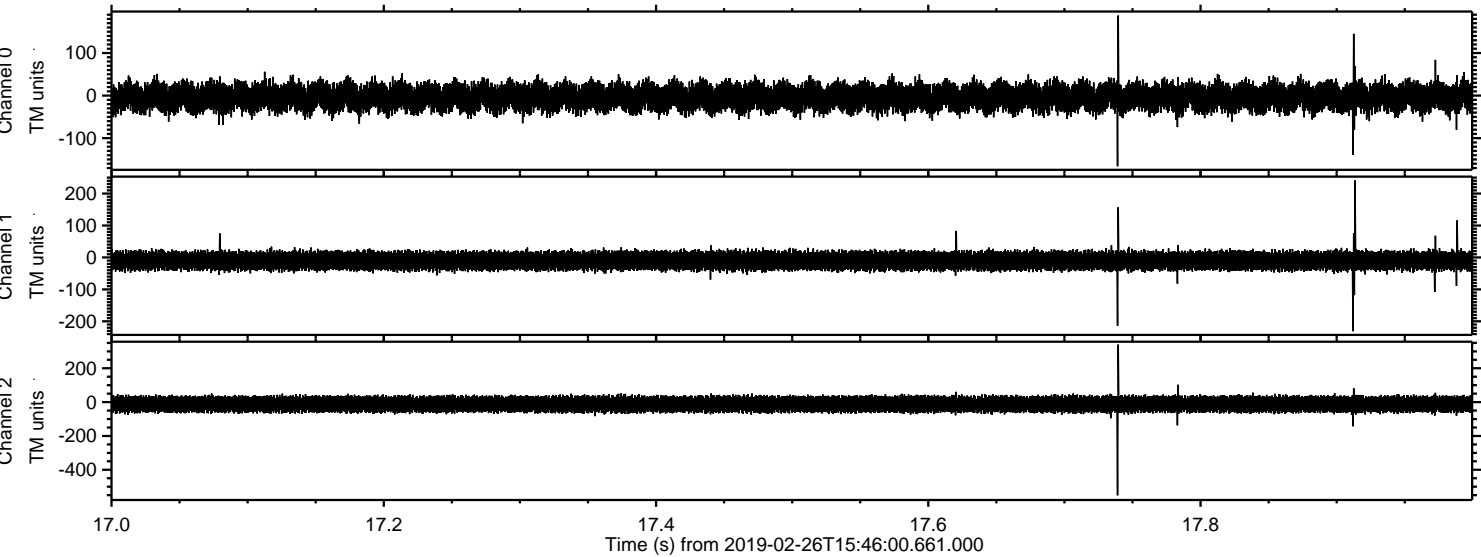


ELMAVAN 3D WAVEFORMS (Measured data sampled at 50 kHz) 51000 packets of 144 samples from 2019-02-26T15:46:00.661.000. Part 111/147

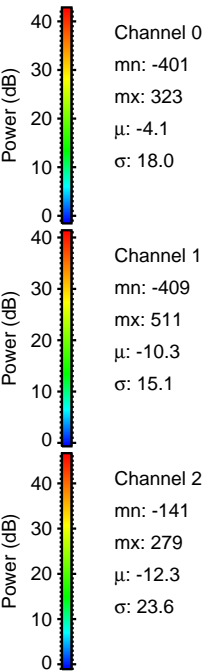
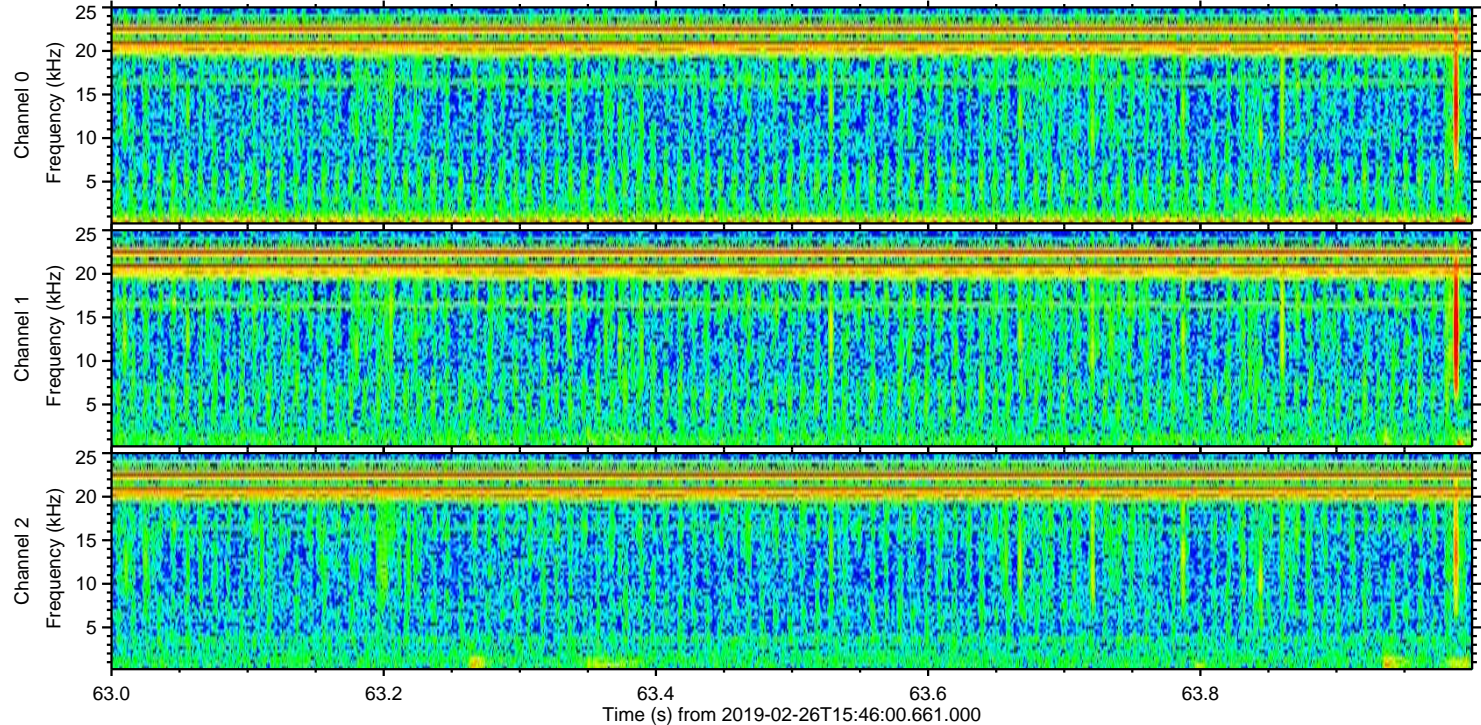
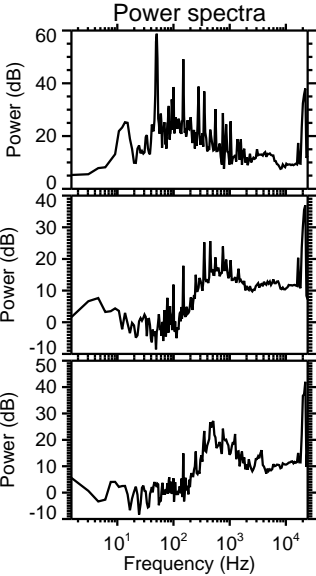
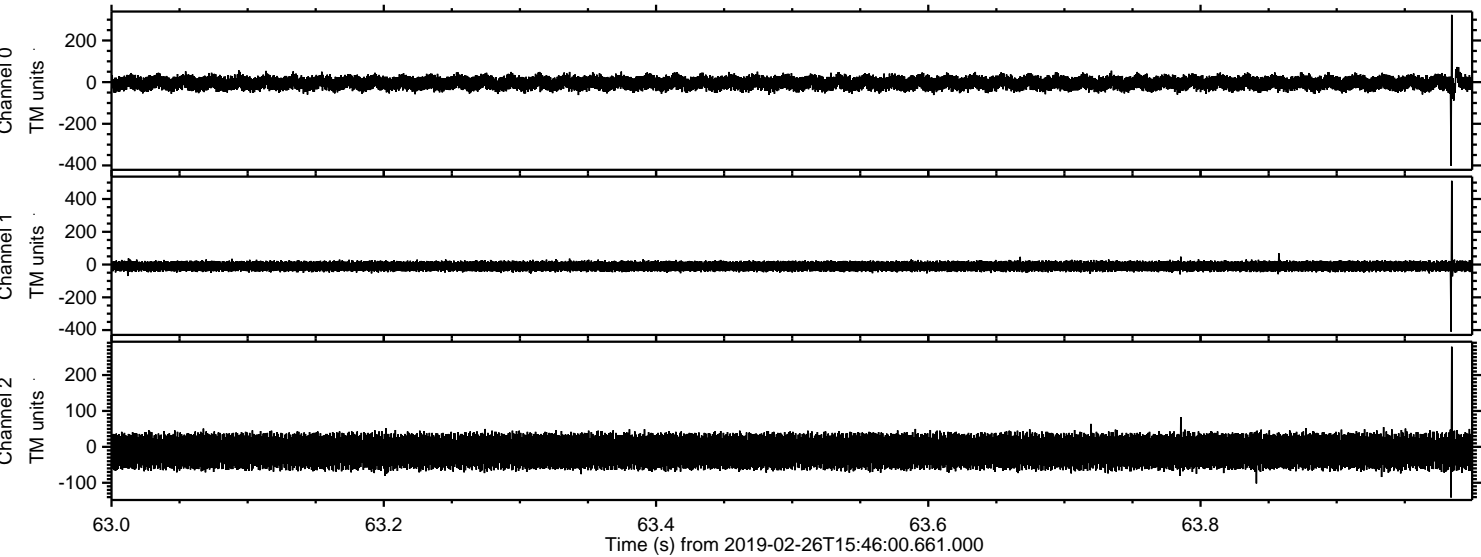
Processed Tue Feb 26 16:53:56 2019 by ELM ver.2012-10-06 from 001\_\_elm20190226\_154559\_\_dat00.bin



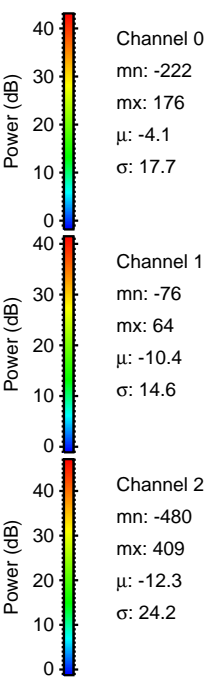
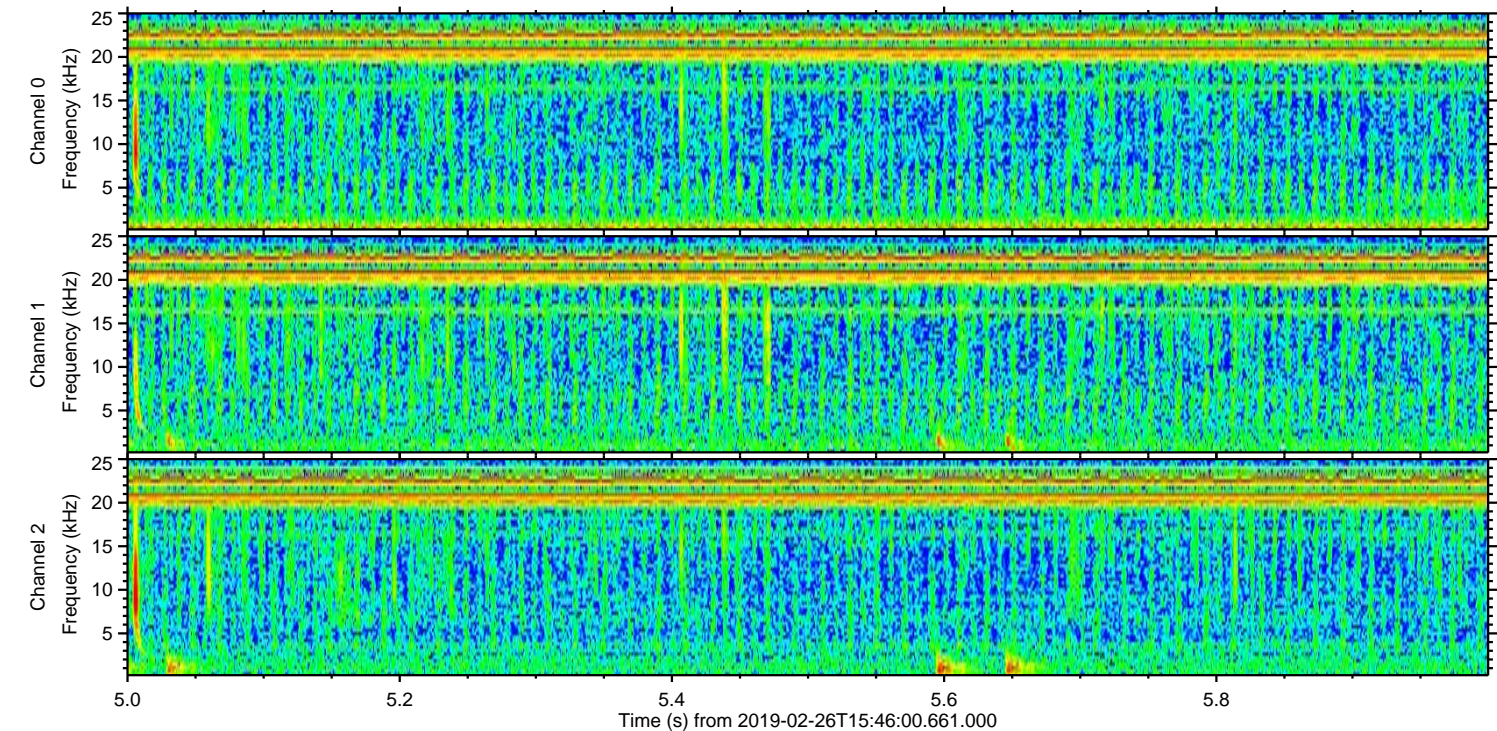
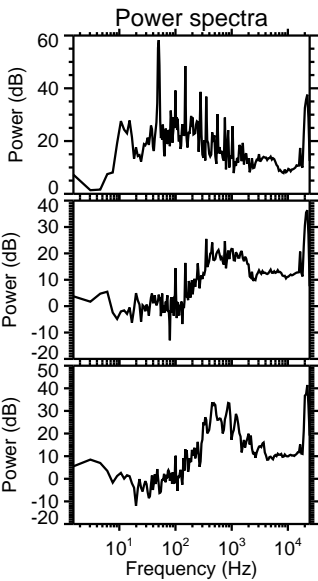
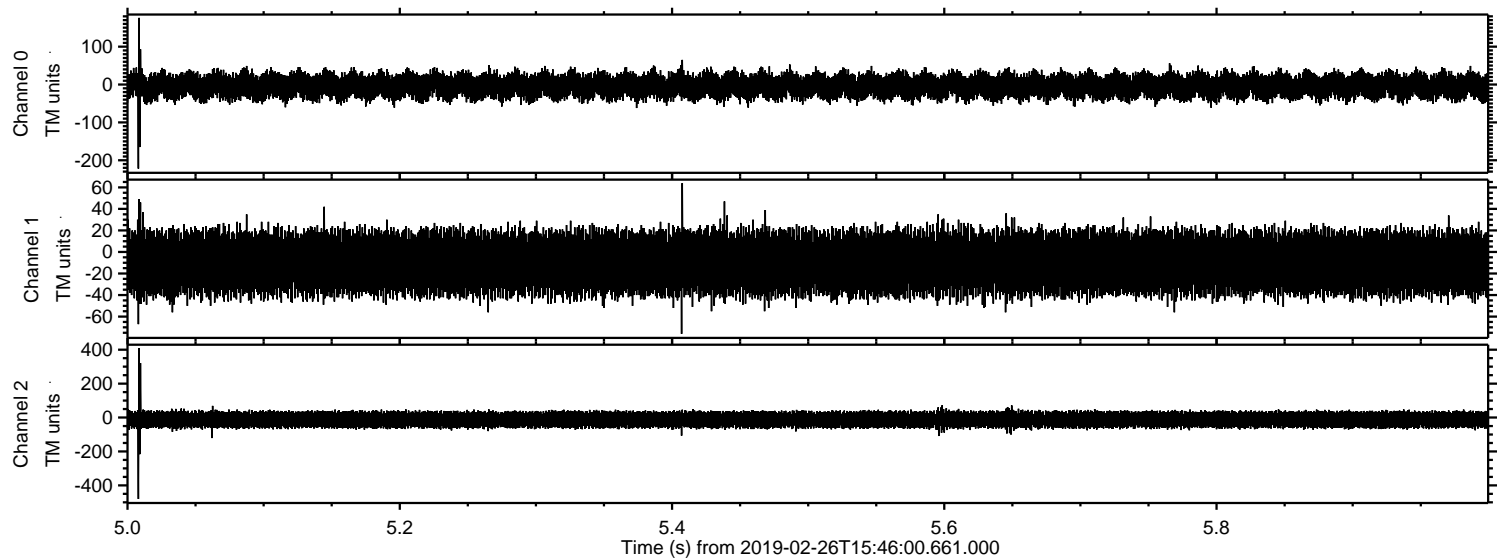
Processed Tue Feb 26 16:53:57 2019 by ELM ver.2012-10-06 from 001\_\_elm20190226\_154559\_\_dat00.bin



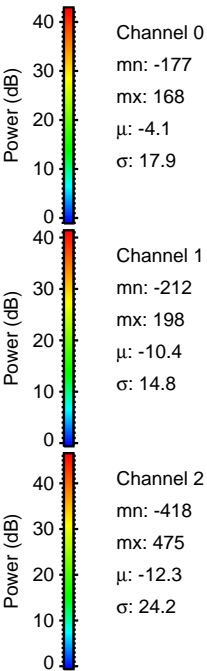
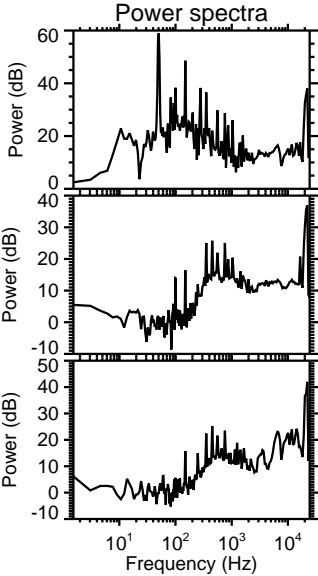
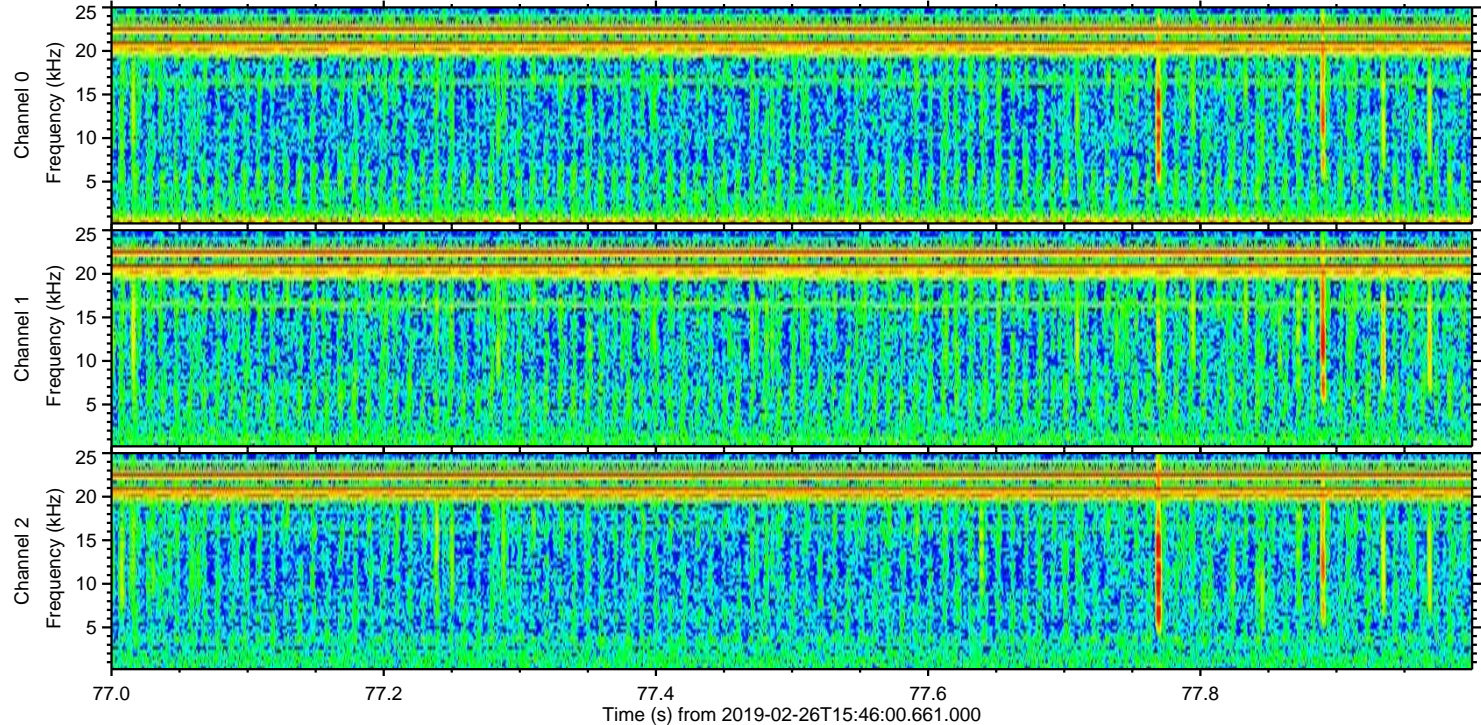
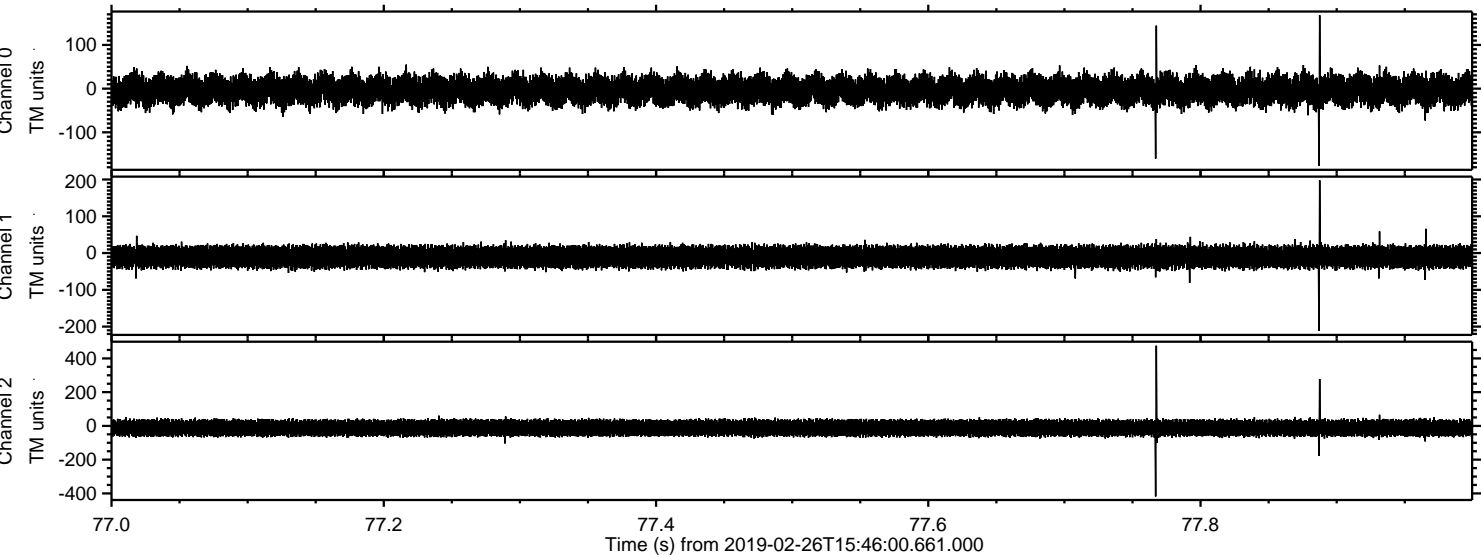
Processed Tue Feb 26 16:53:58 2019 by ELM ver.2012-10-06 from 001\_\_elm20190226\_154559\_\_dat00.bin



Processed Tue Feb 26 16:53:58 2019 by ELM ver.2012-10-06 from 001\_\_elm20190226\_154559\_\_dat00.bin



Processed Tue Feb 26 16:53:59 2019 by ELM ver.2012-10-06 from 001\_\_elm20190226\_154559\_\_dat00.bin



Channel 0  
mn: -177  
mx: 168  
 $\mu$ : -4.1  
 $\sigma$ : 17.9

Channel 1  
mn: -212  
mx: 198  
 $\mu$ : -10.4  
 $\sigma$ : 14.8

Channel 2  
mn: -418  
mx: 475  
 $\mu$ : -12.3  
 $\sigma$ : 24.2

