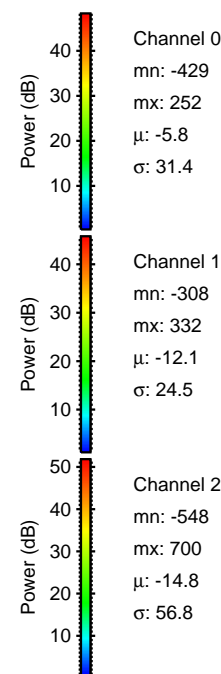
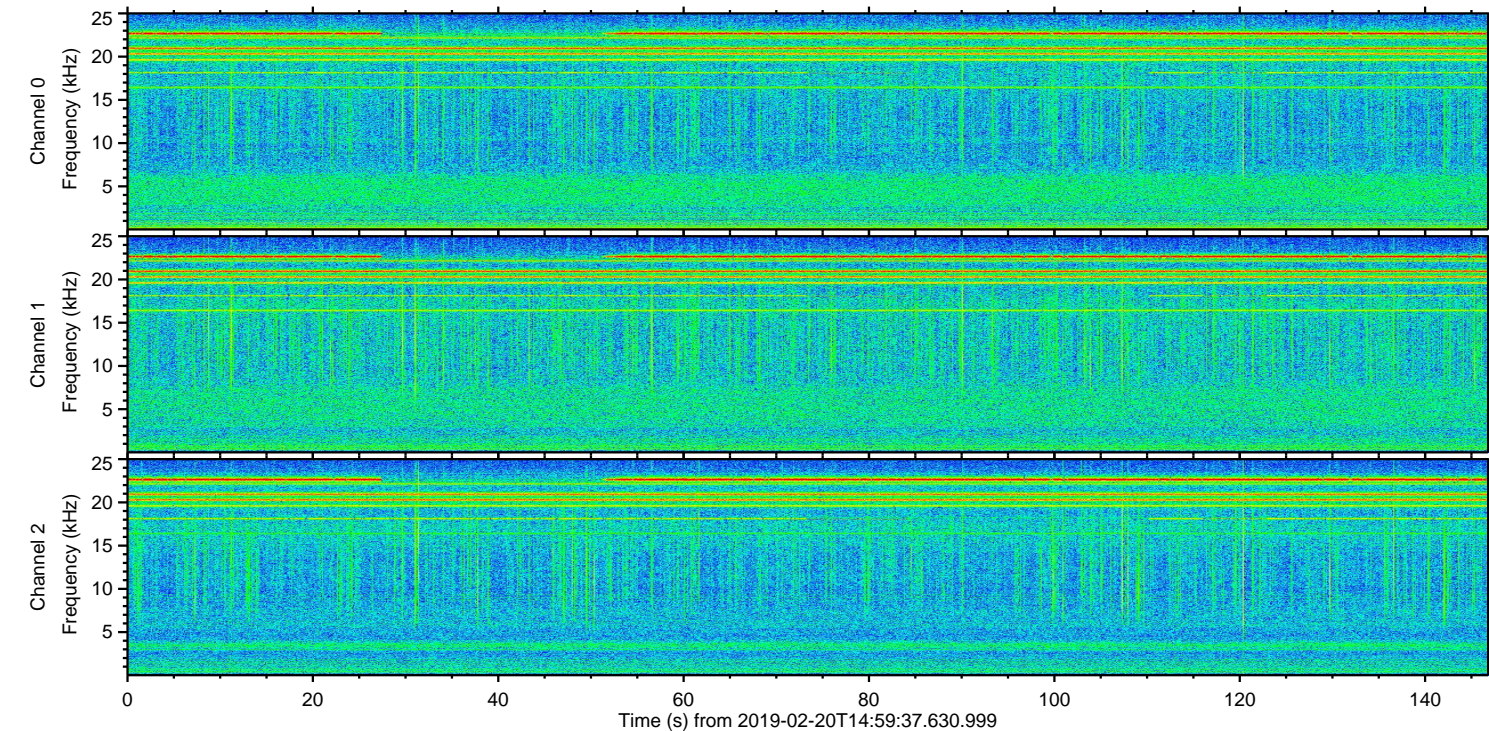
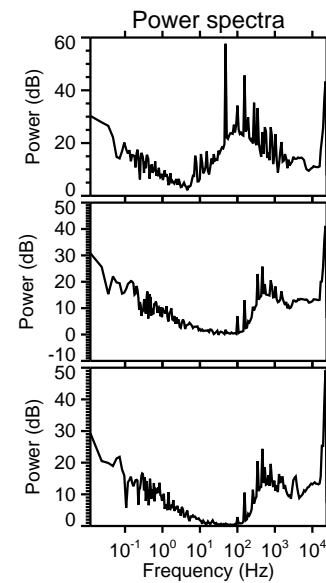
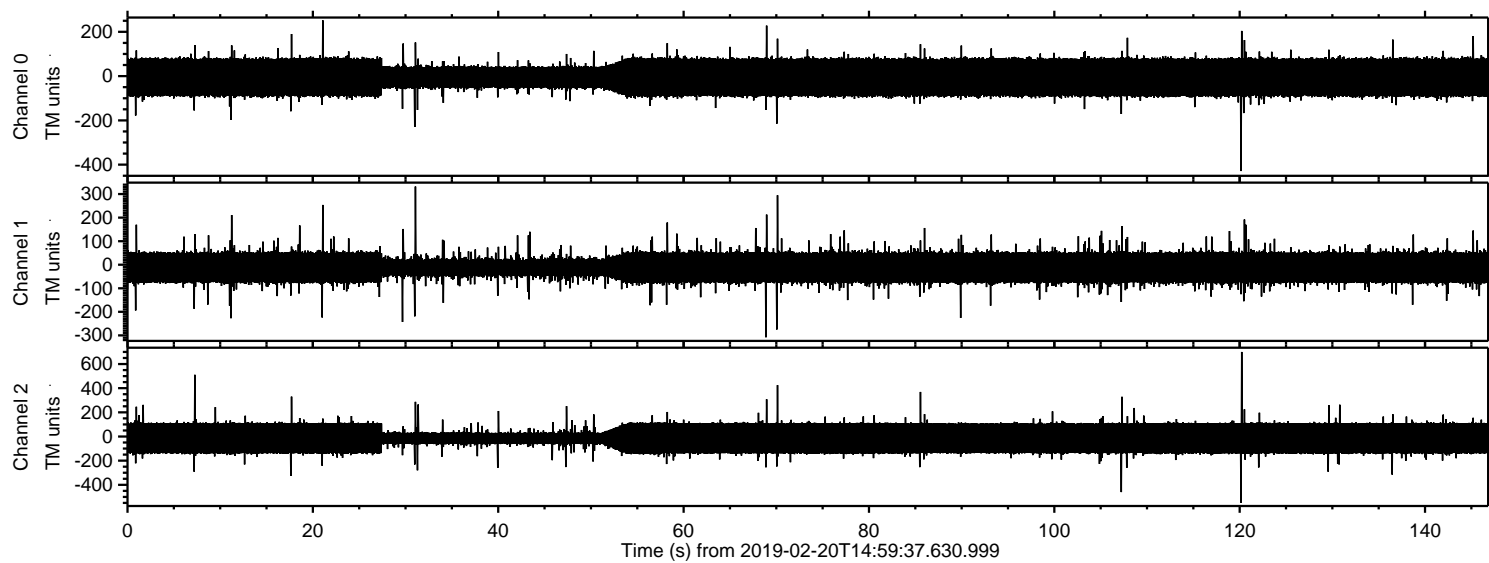


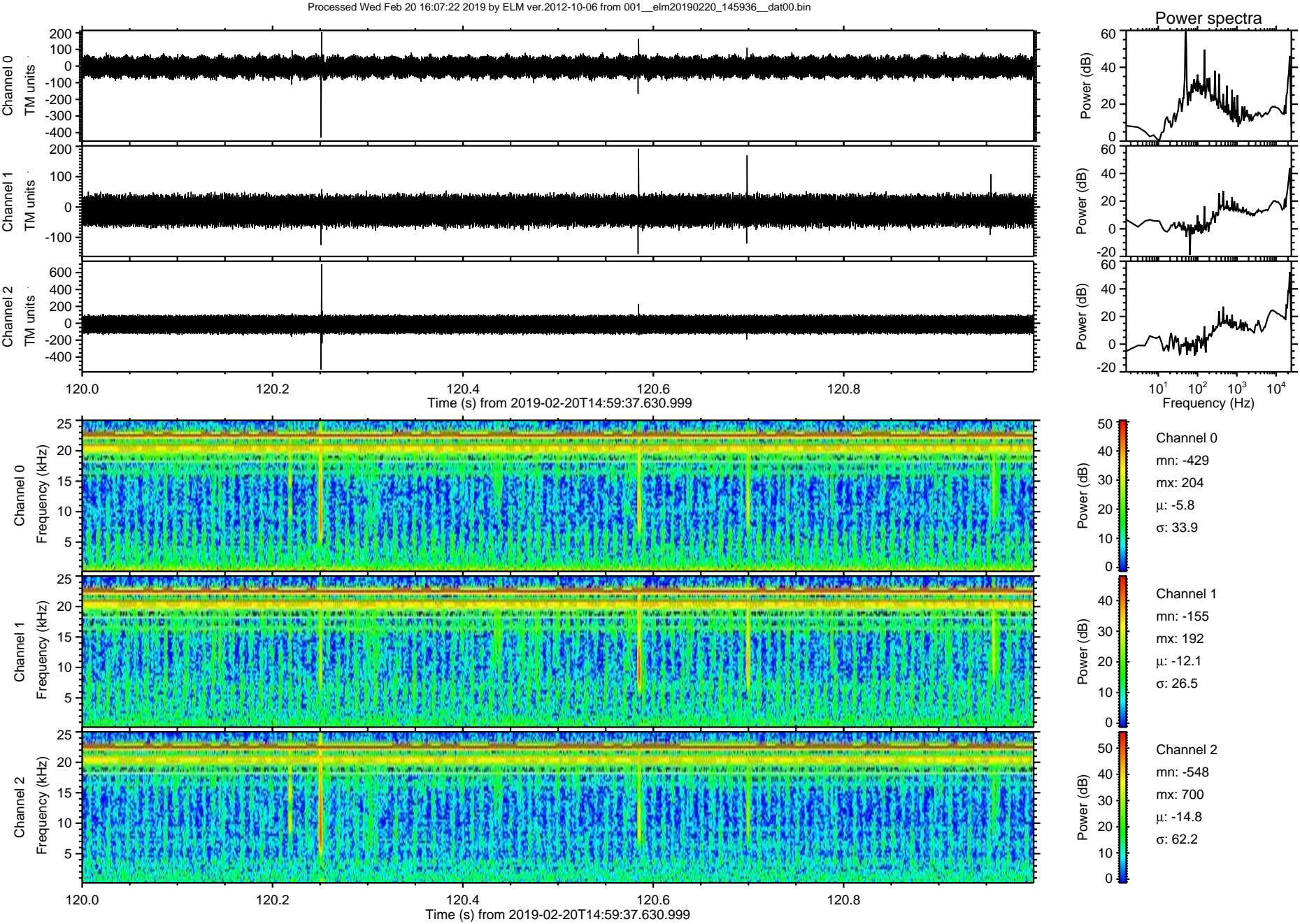
# ELMAVAN 3D WAVEFORMS (Measured data sampled at 50 kHz) 51000 packets of 144 samples from 2019-02-20T14:59:37.630.999.

Processed Wed Feb 20 16:07:13 2019 by ELM ver.2012-10-06 from 001\_\_elm20190220\_145936\_\_dat00.bin



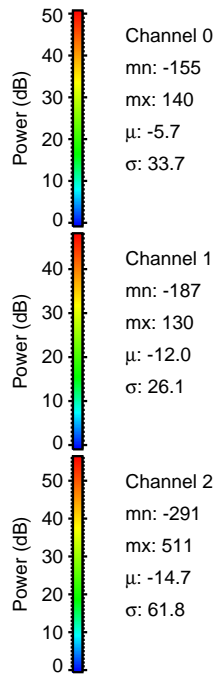
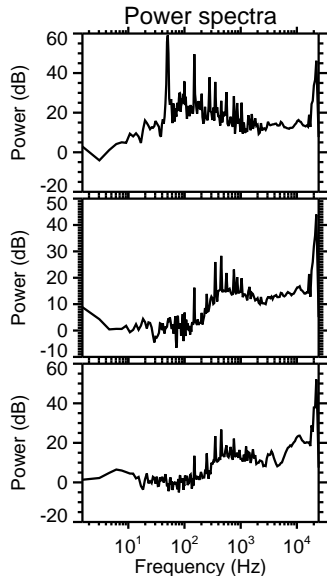
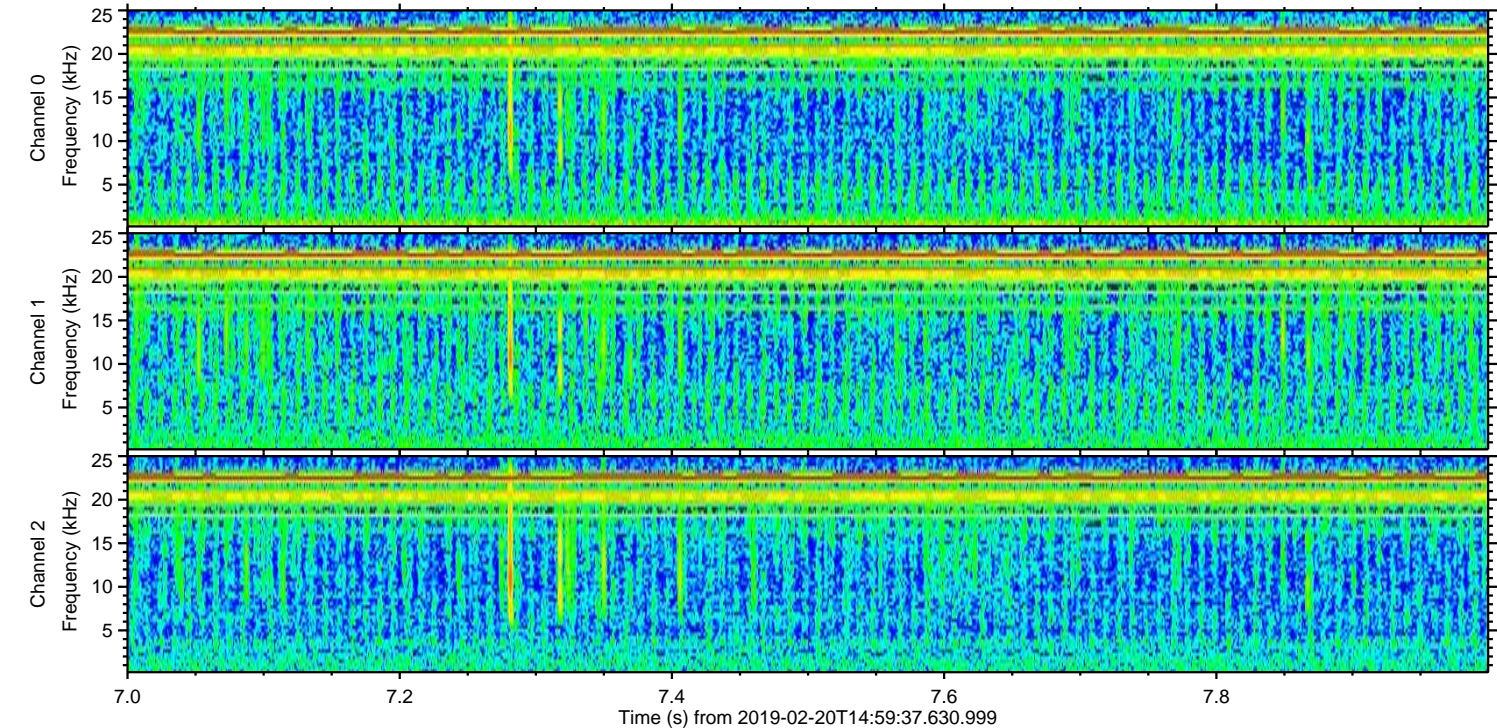
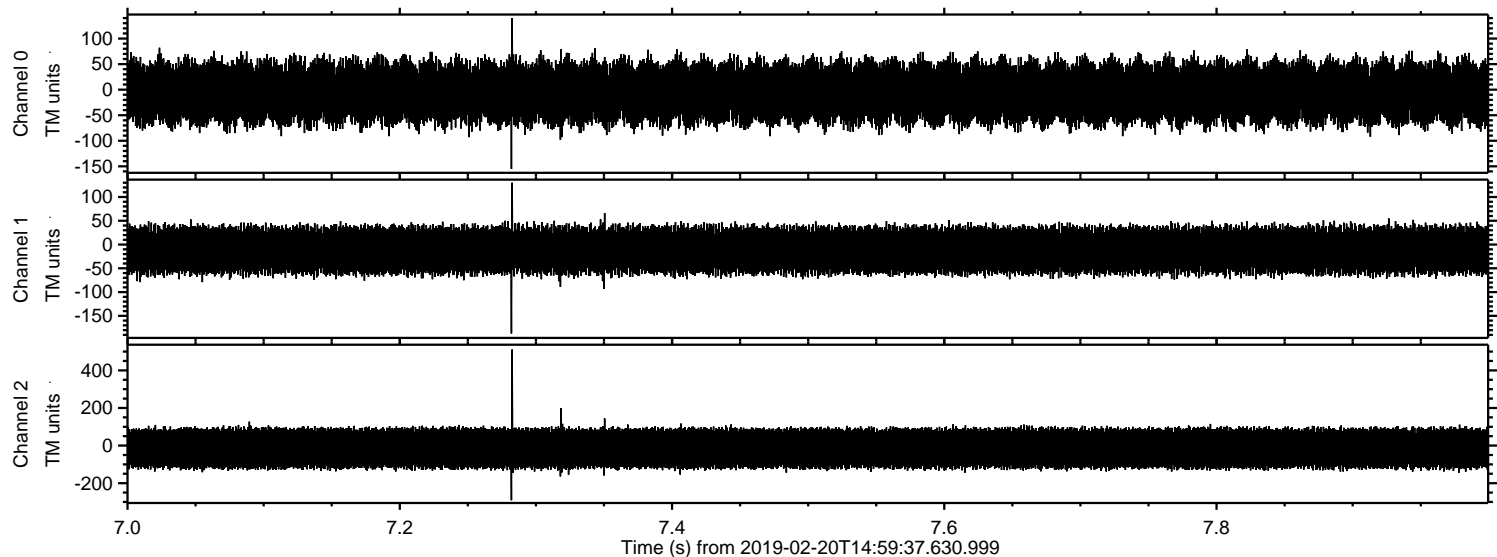


ELMAVAN 3D WAVEFORMS (Measured data sampled at 50 kHz) 51000 packets of 144 samples from 2019-02-20T14:59:37.630.999. Part 121/147



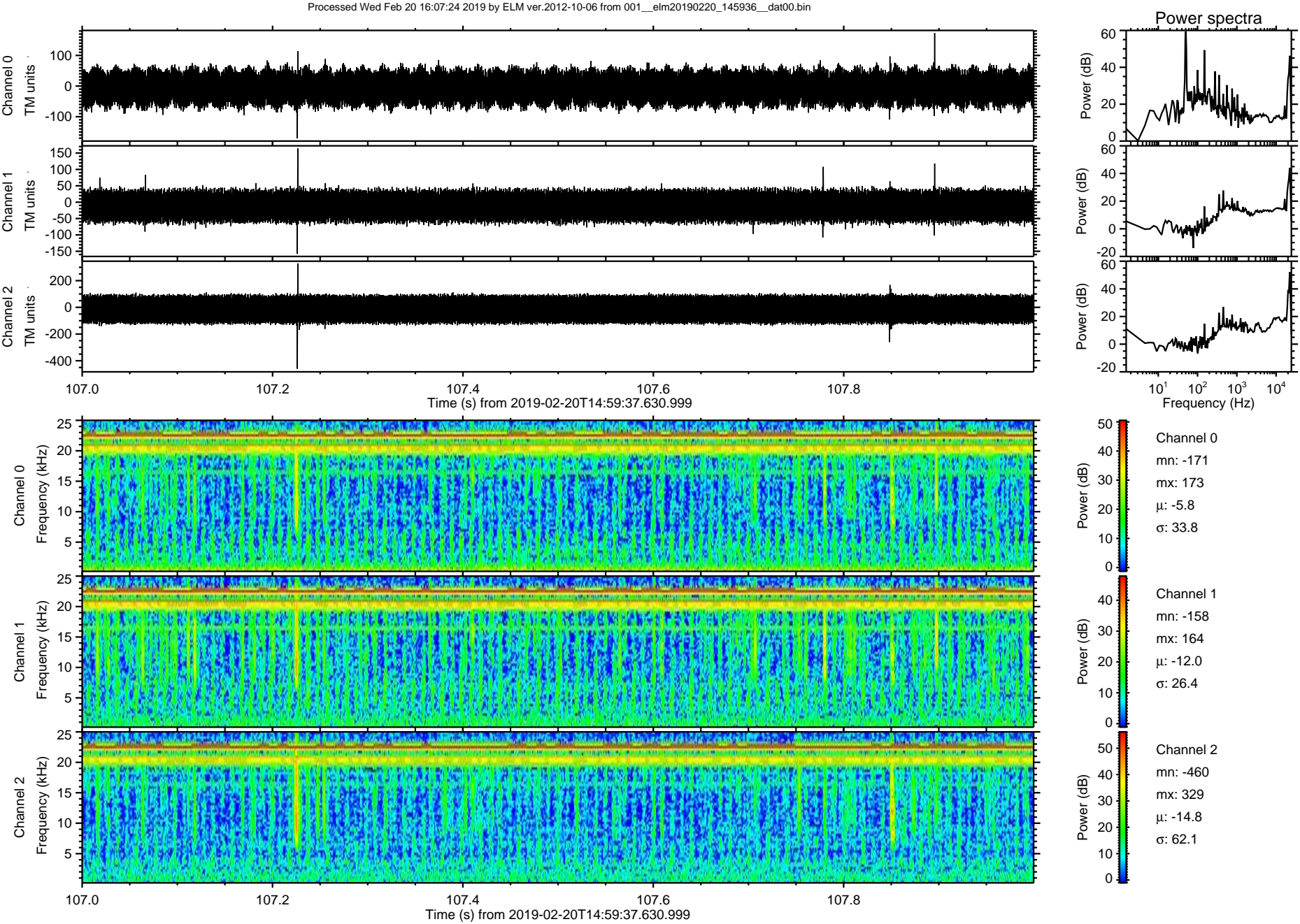


Processed Wed Feb 20 16:07:23 2019 by ELM ver.2012-10-06 from 001\_\_elm20190220\_145936\_\_dat00.bin



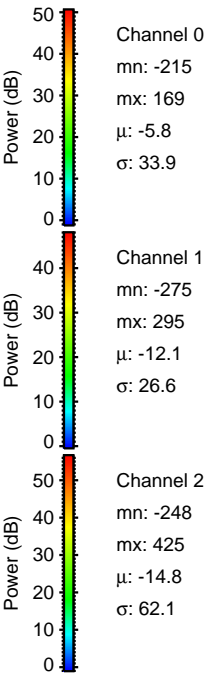
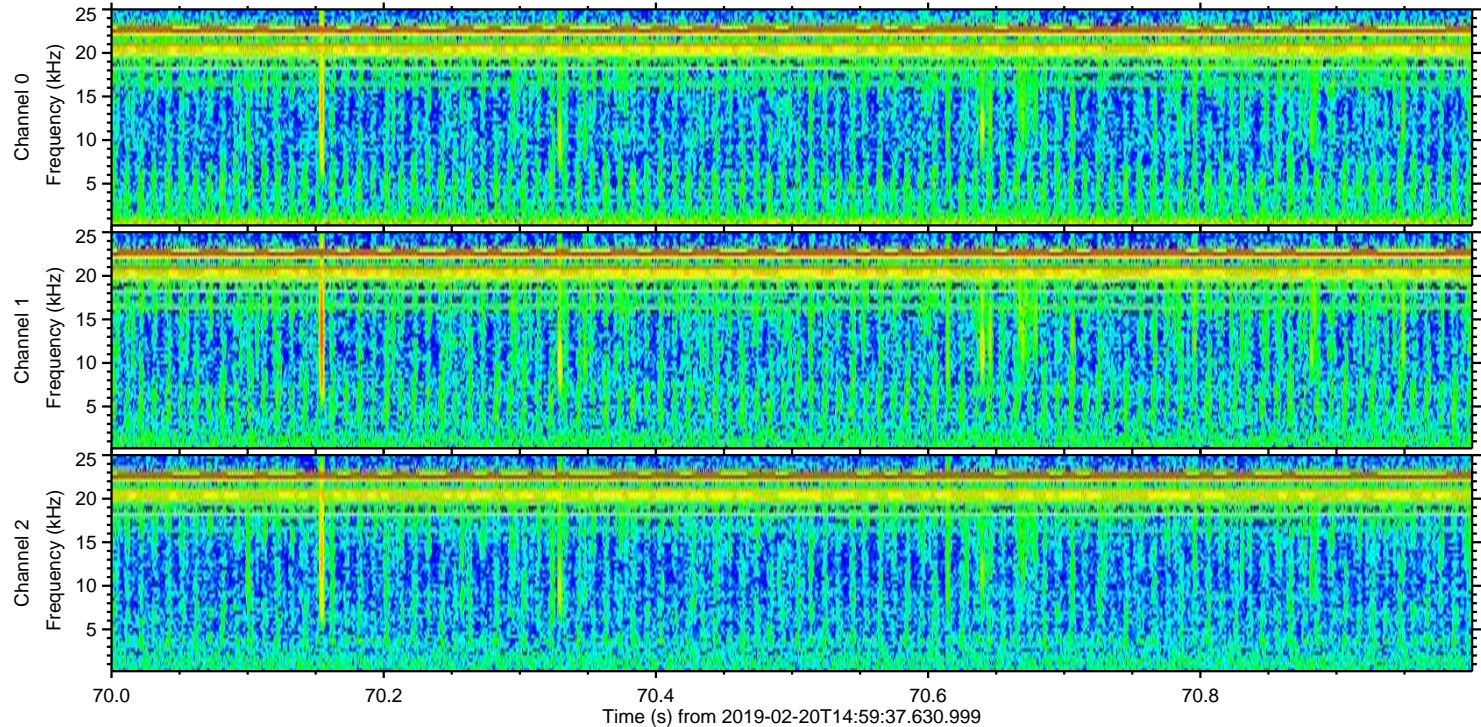
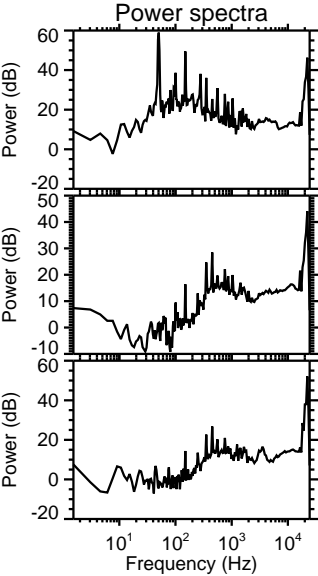
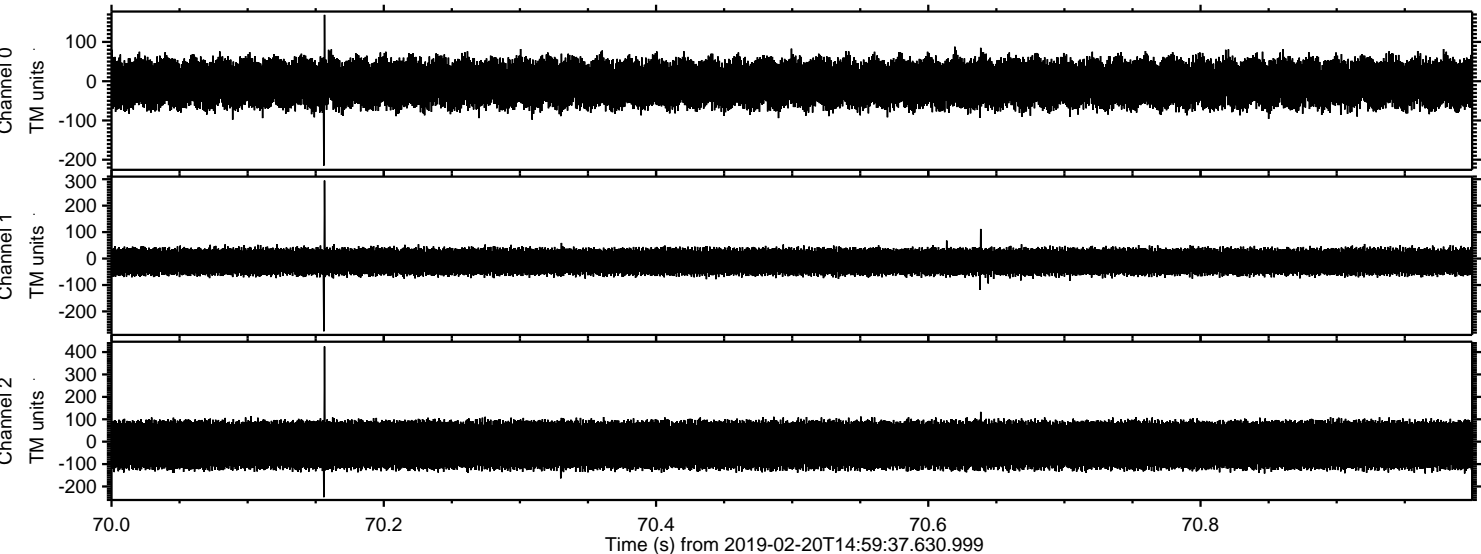


ELMAVAN 3D WAVEFORMS (Measured data sampled at 50 kHz) 51000 packets of 144 samples from 2019-02-20T14:59:37.630.999. Part 108/147



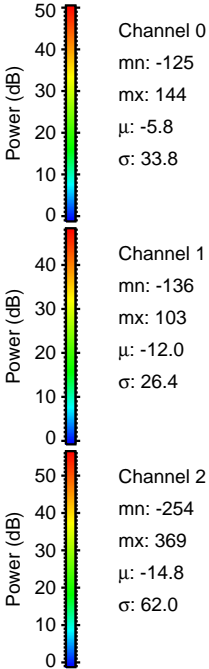
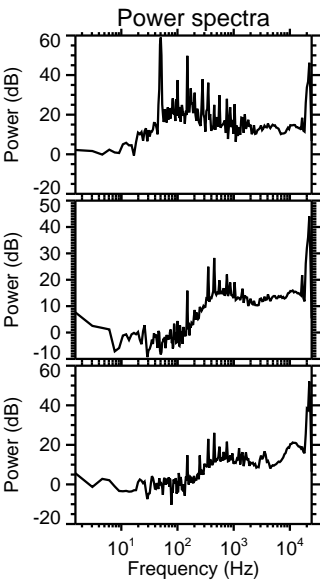
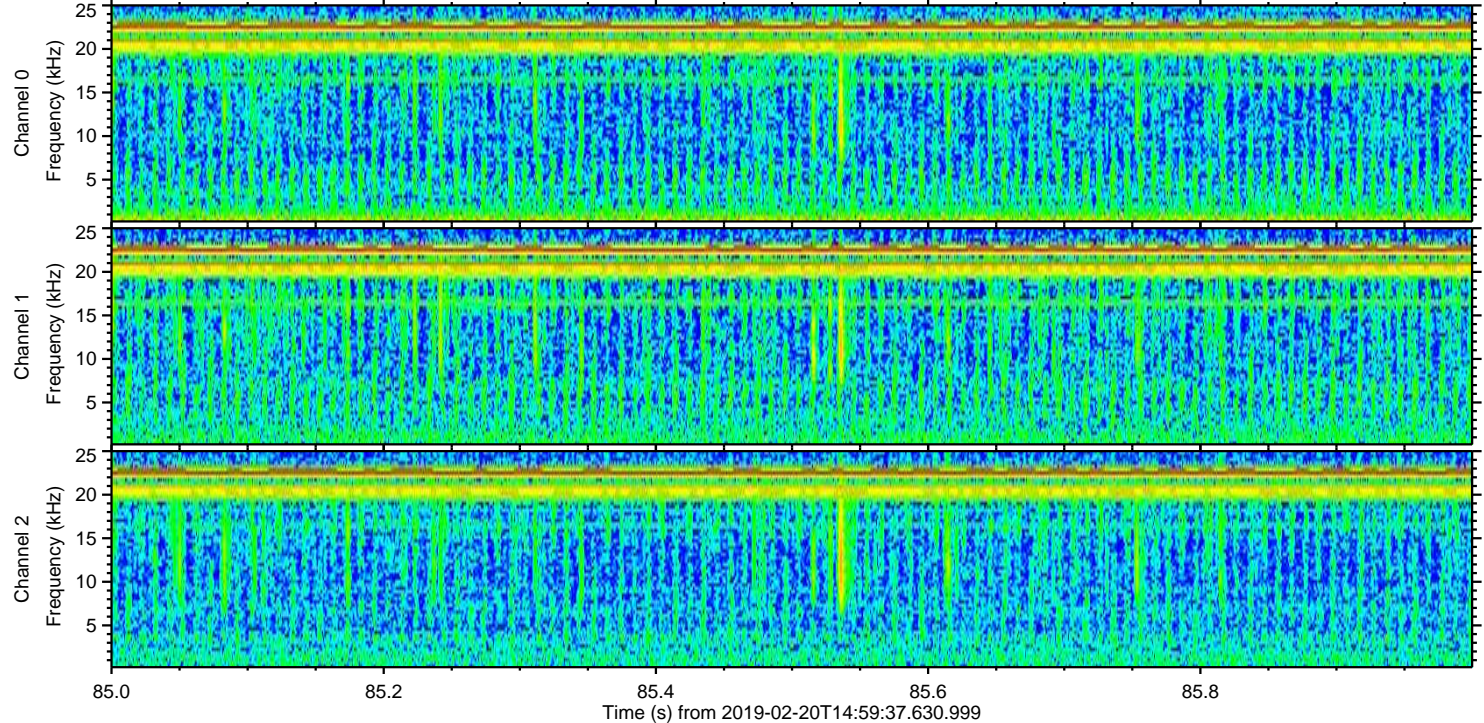
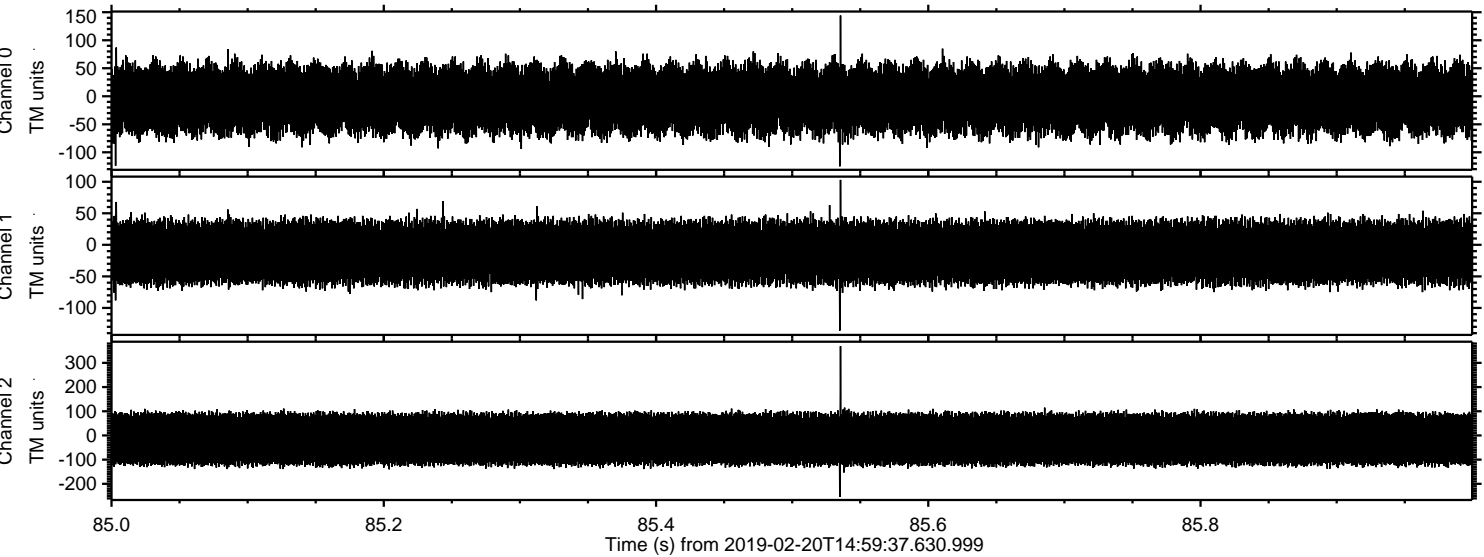


Processed Wed Feb 20 16:07:25 2019 by ELM ver.2012-10-06 from 001\_\_elm20190220\_145936\_\_dat00.bin



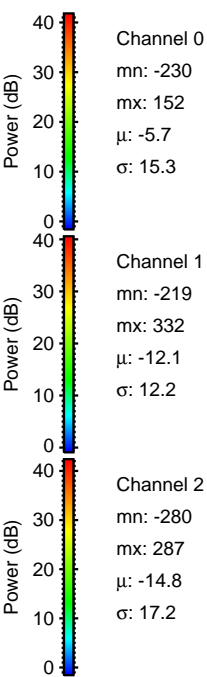
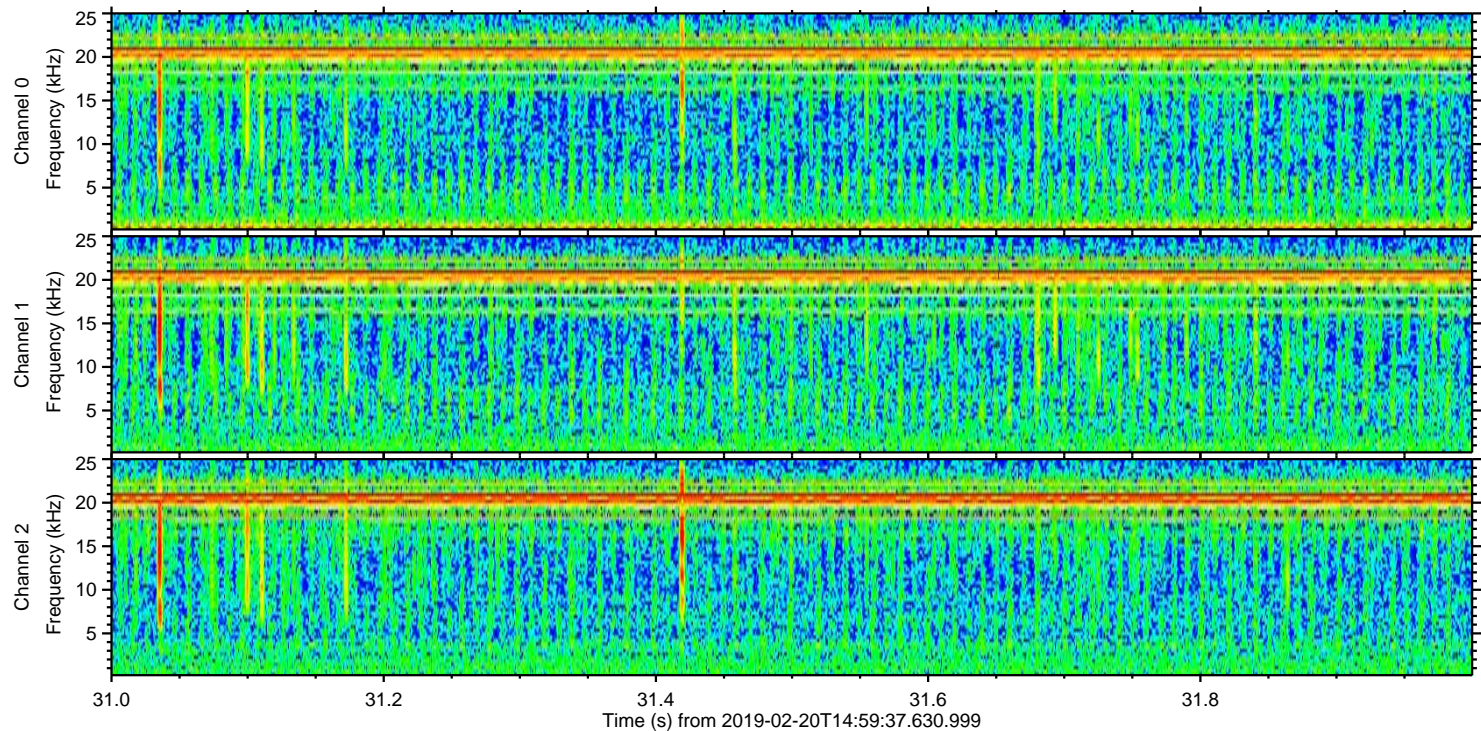
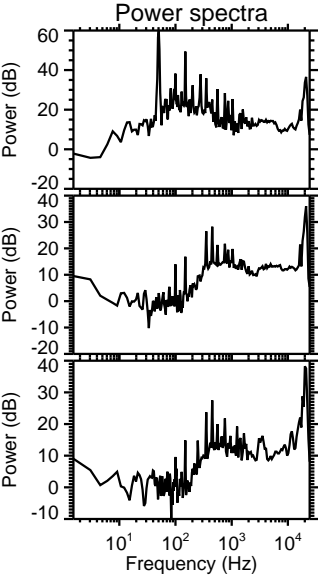
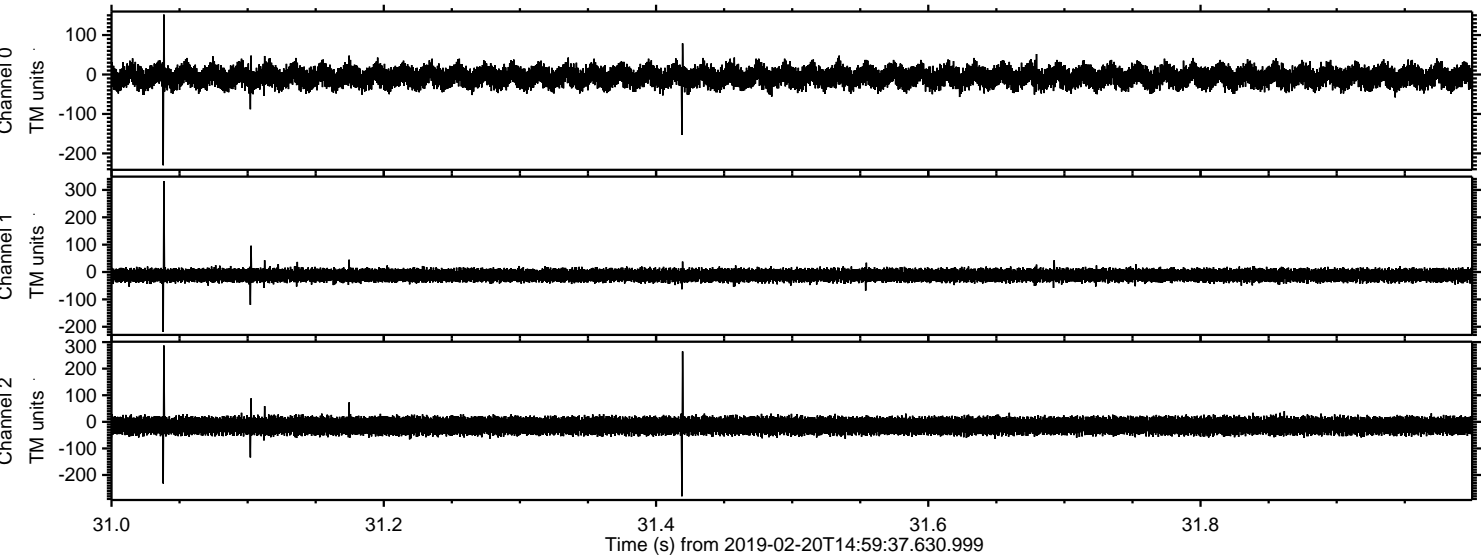


Processed Wed Feb 20 16:07:26 2019 by ELM ver.2012-10-06 from 001\_\_elm20190220\_145936\_\_dat00.bin



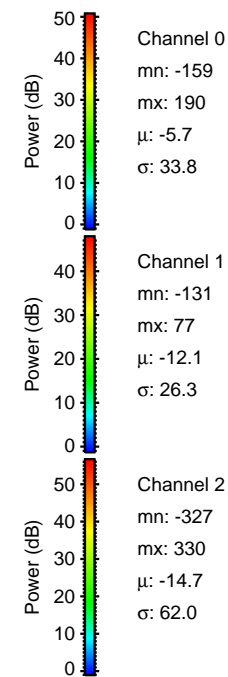
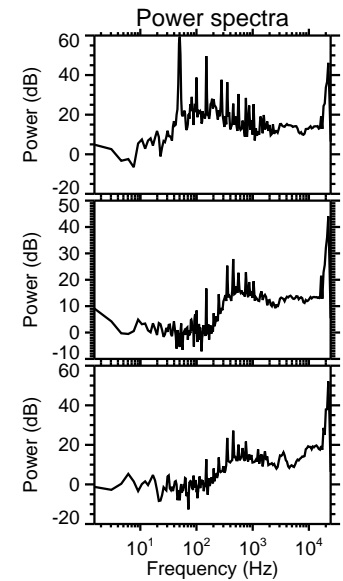
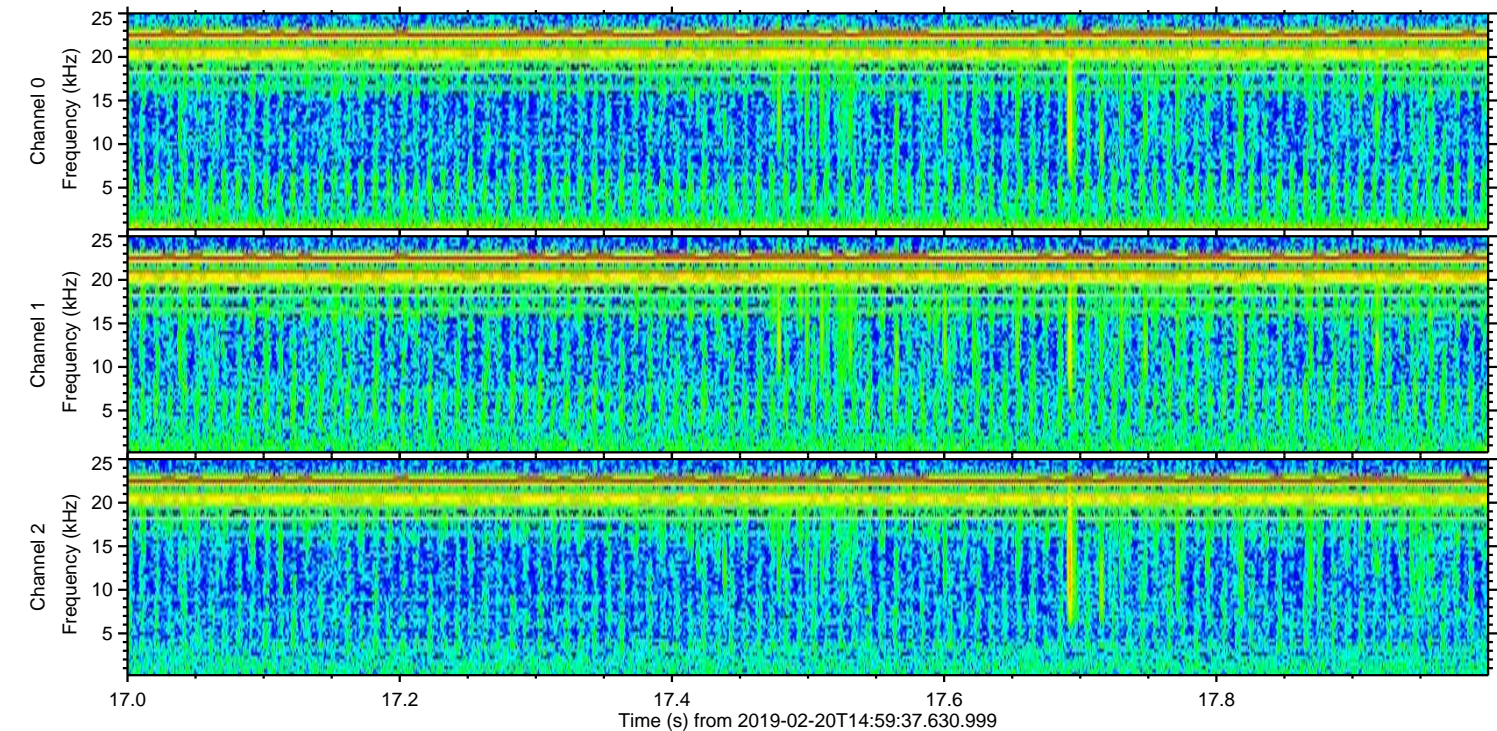
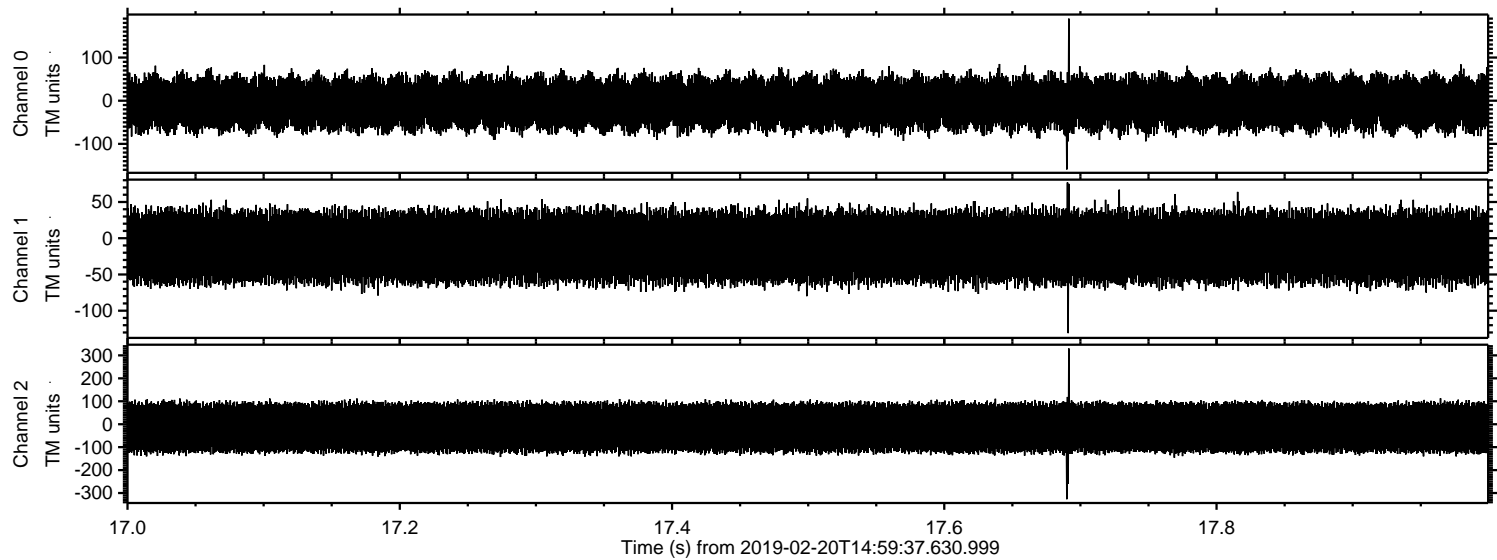


Processed Wed Feb 20 16:07:27 2019 by ELM ver.2012-10-06 from 001\_\_elm20190220\_145936\_\_dat00.bin





Processed Wed Feb 20 16:07:27 2019 by ELM ver.2012-10-06 from 001\_\_elm20190220\_145936\_\_dat00.bin



Channel 0  
mn: -159  
mx: 190  
 $\mu$ : -5.7  
 $\sigma$ : 33.8

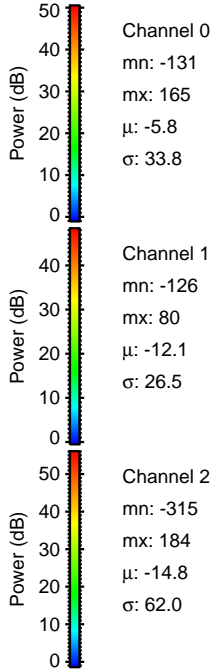
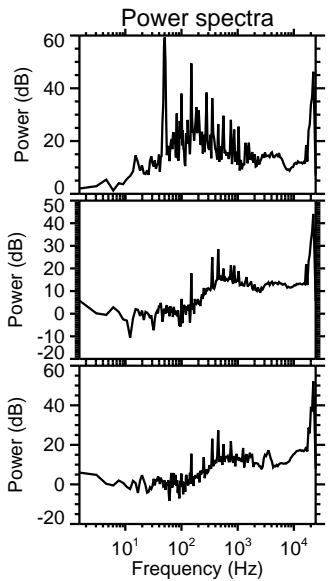
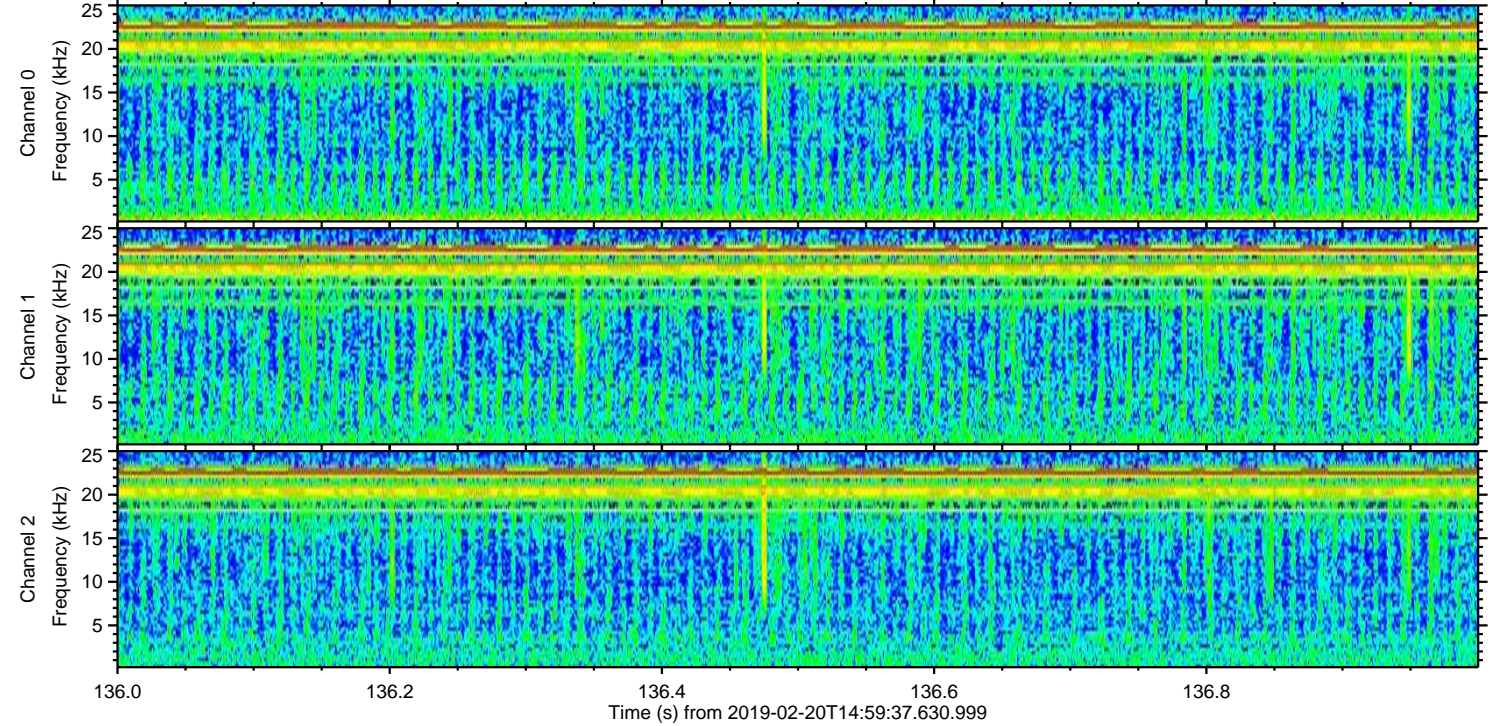
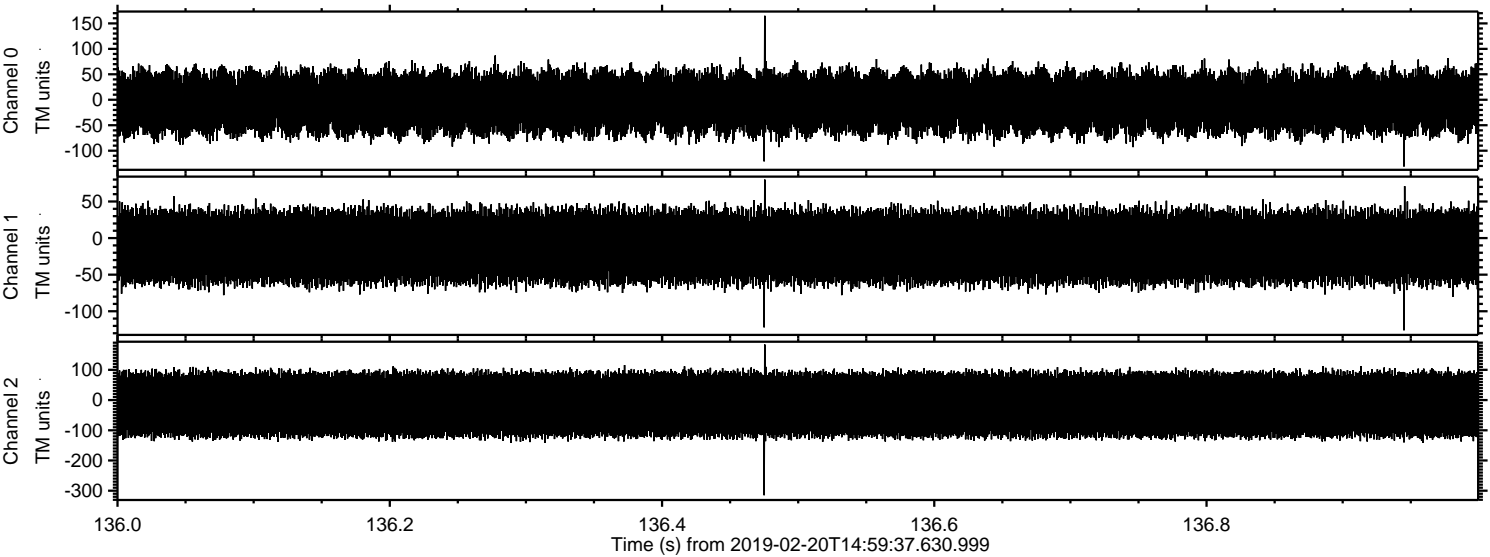
Channel 1  
mn: -131  
mx: 77  
 $\mu$ : -12.1  
 $\sigma$ : 26.3

Channel 2  
mn: -327  
mx: 330  
 $\mu$ : -14.7  
 $\sigma$ : 62.0



ELMAVAN 3D WAVEFORMS (Measured data sampled at 50 kHz) 51000 packets of 144 samples from 2019-02-20T14:59:37.630.999. Part 137/147

Processed Wed Feb 20 16:07:28 2019 by ELM ver.2012-10-06 from 001\_\_elm20190220\_145936\_\_dat00.bin



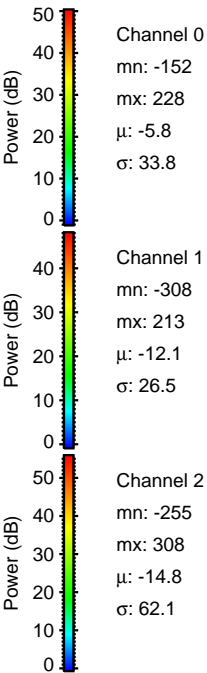
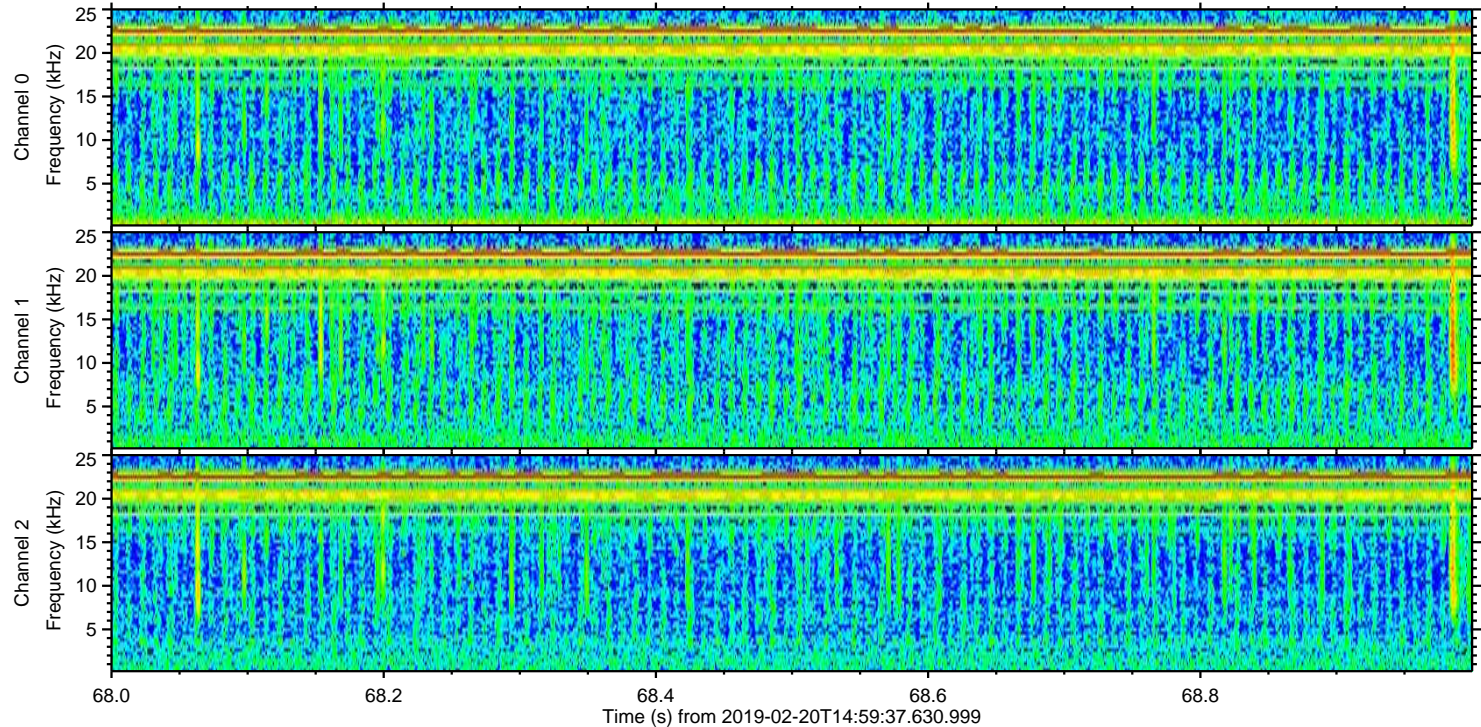
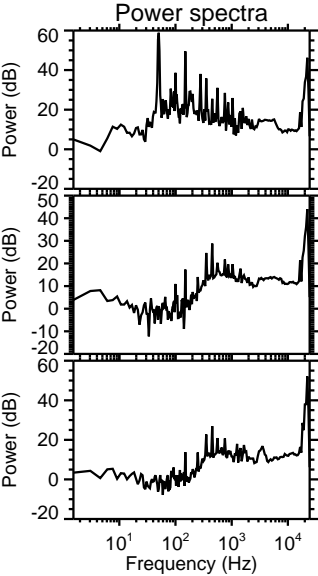
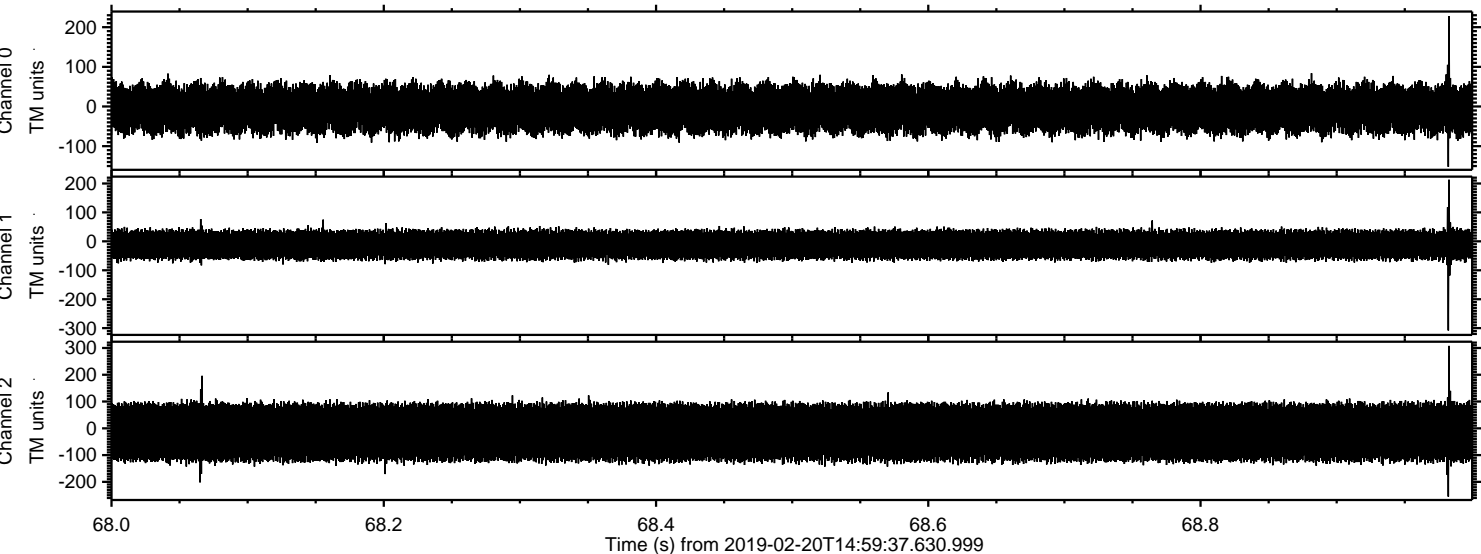
Channel 0  
mn: -131  
mx: 165  
 $\mu$ : -5.8  
 $\sigma$ : 33.8

Channel 1  
mn: -126  
mx: 80  
 $\mu$ : -12.1  
 $\sigma$ : 26.5

Channel 2  
mn: -315  
mx: 184  
 $\mu$ : -14.8  
 $\sigma$ : 62.0



Processed Wed Feb 20 16:07:29 2019 by ELM ver.2012-10-06 from 001\_\_elm20190220\_145936\_\_dat00.bin





Processed Wed Feb 20 16:07:31 2019 by ELM ver.2012-10-06 from 001\_\_elm20190220\_145936\_\_dat00.bin

