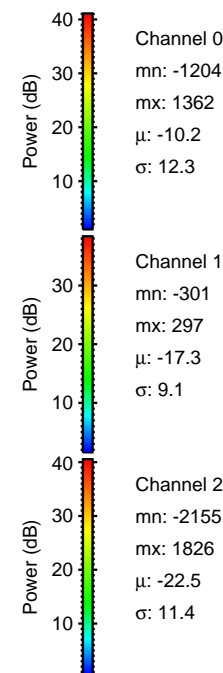
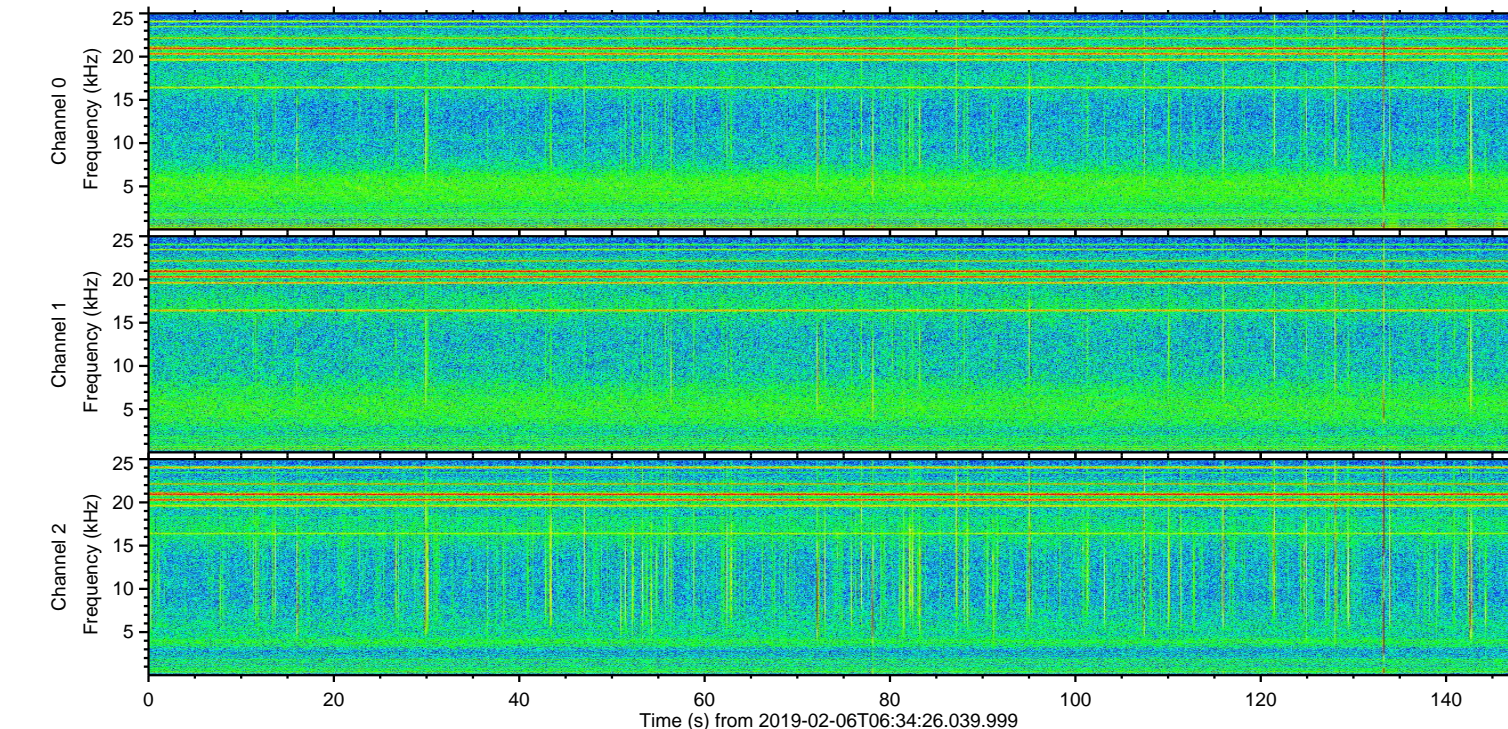
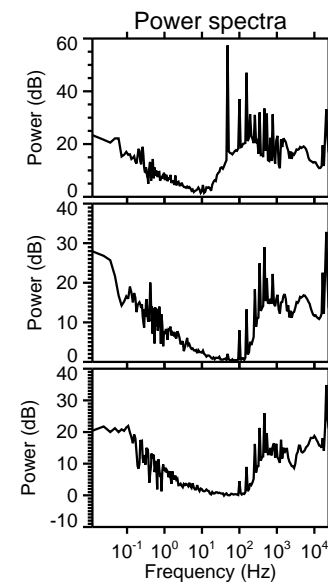
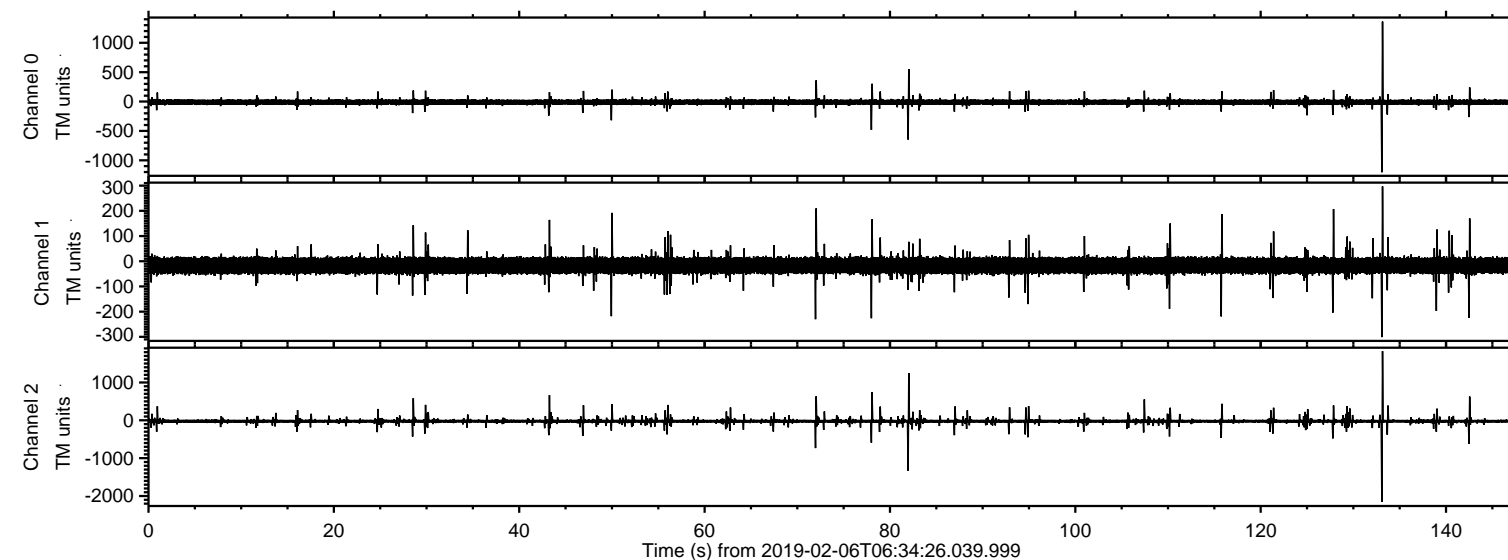


# ELMAVAN 3D WAVEFORMS (Measured data sampled at 50 kHz) 51000 packets of 144 samples from 2019-02-06T06:34:26.039.999.

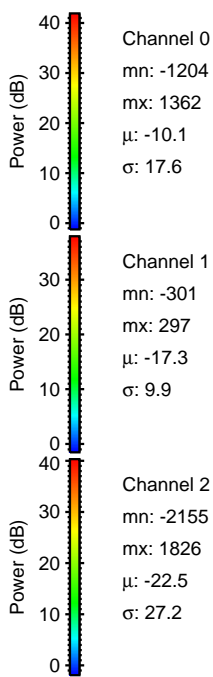
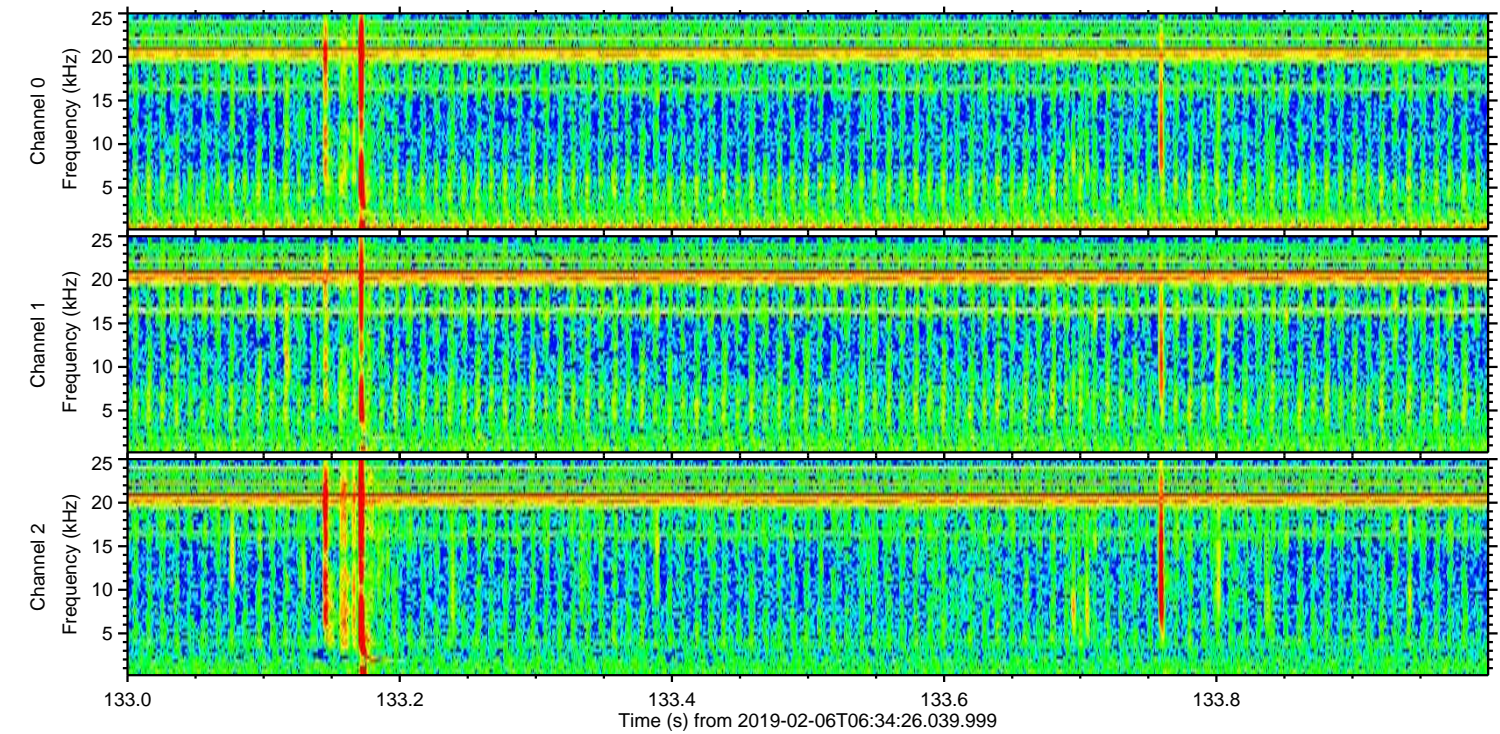
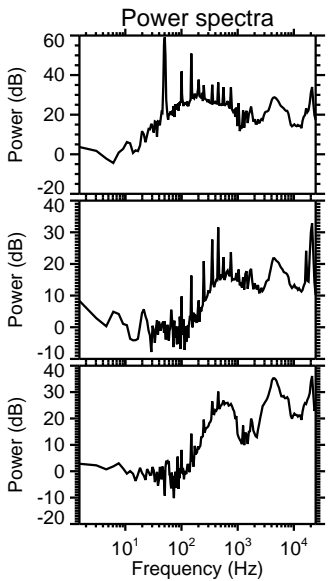
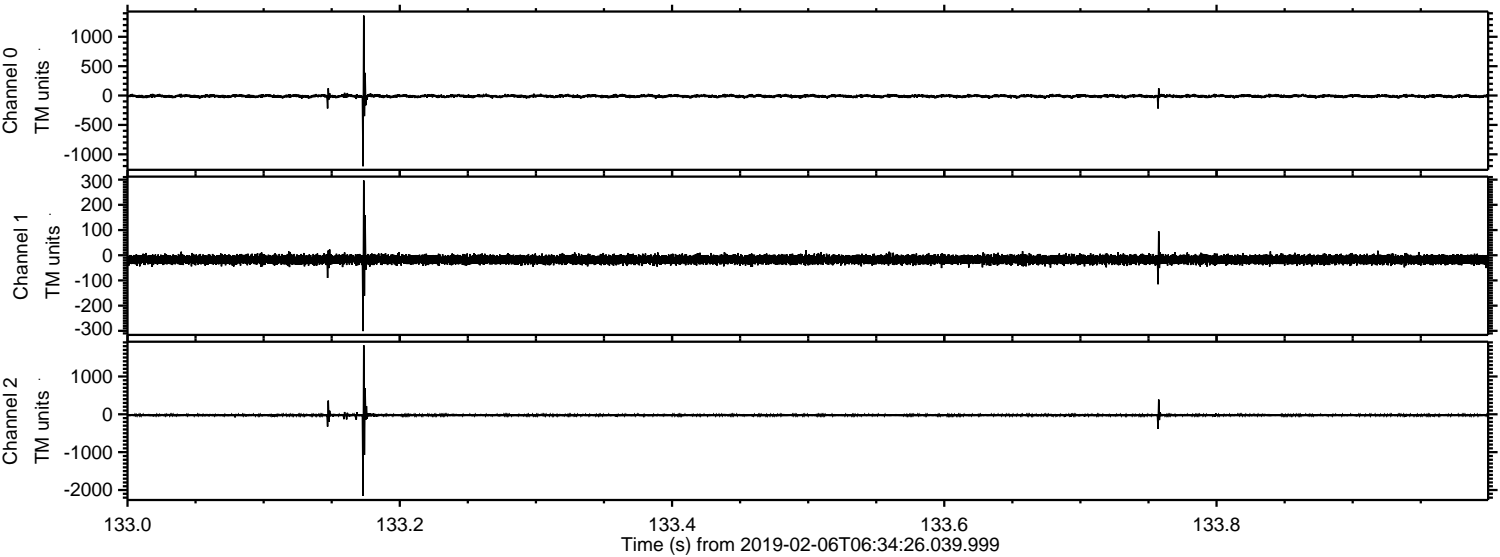
Processed Wed Feb 6 07:42:43 2019 by ELM ver.2012-10-06 from 001\_\_elm20190206\_063425\_\_dat00.bin





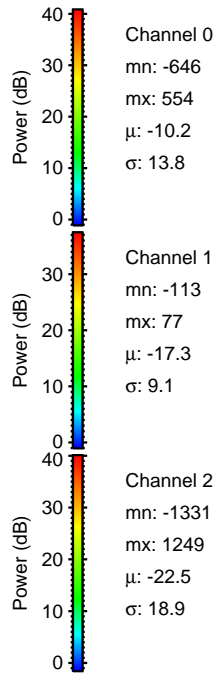
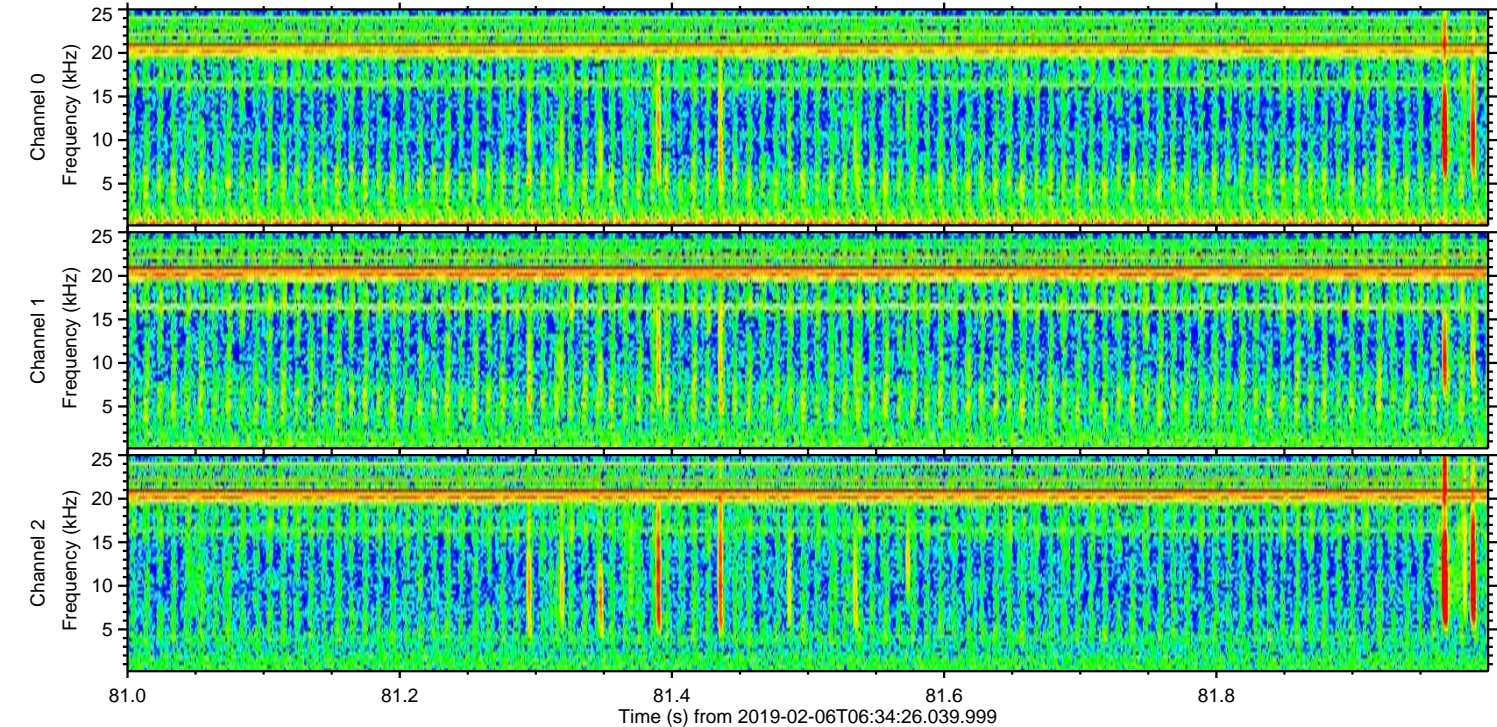
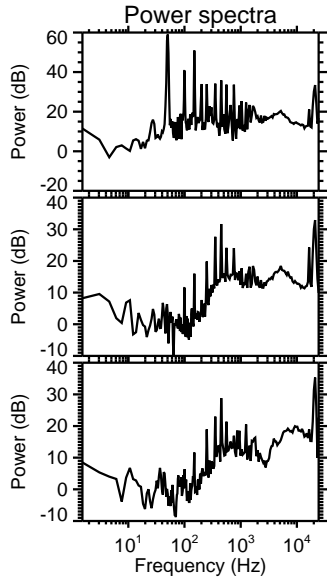
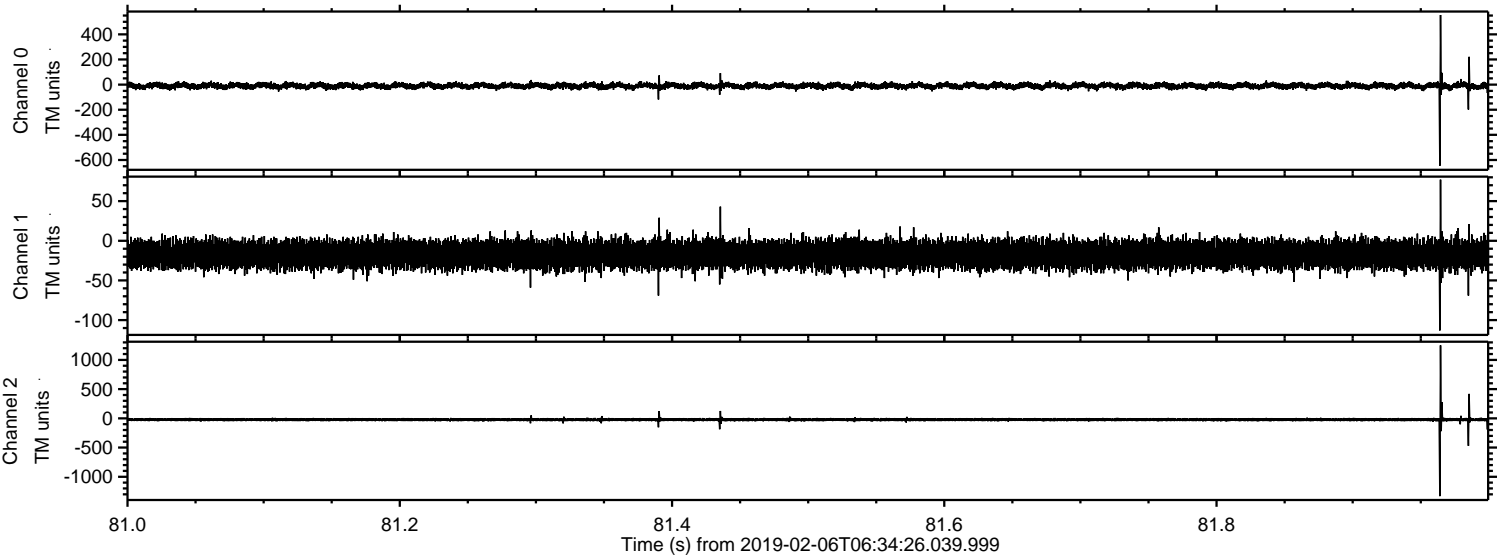
ELMAVAN 3D WAVEFORMS (Measured data sampled at 50 kHz) 51000 packets of 144 samples from 2019-02-06T06:34:26.039.999. Part 134/147

Processed Wed Feb 6 07:42:49 2019 by ELM ver.2012-10-06 from 001\_\_elm20190206\_063425\_\_dat00.bin



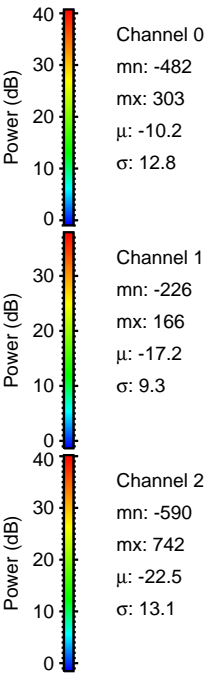
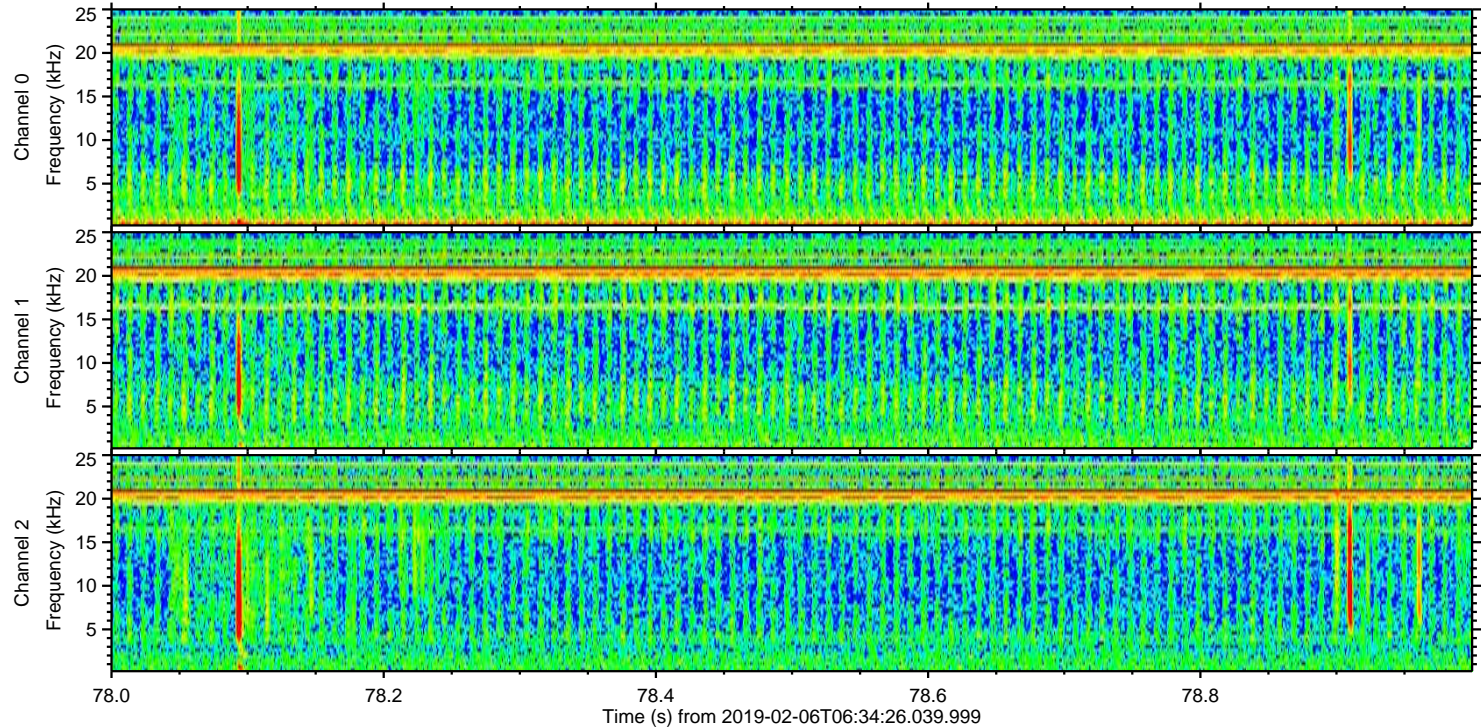
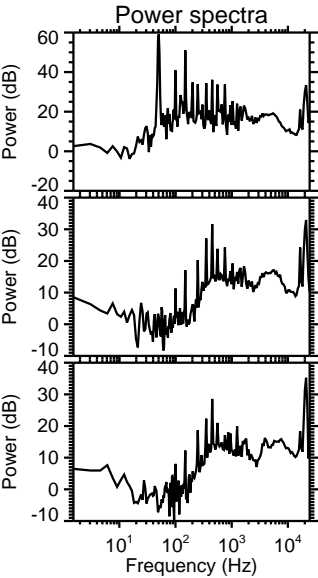
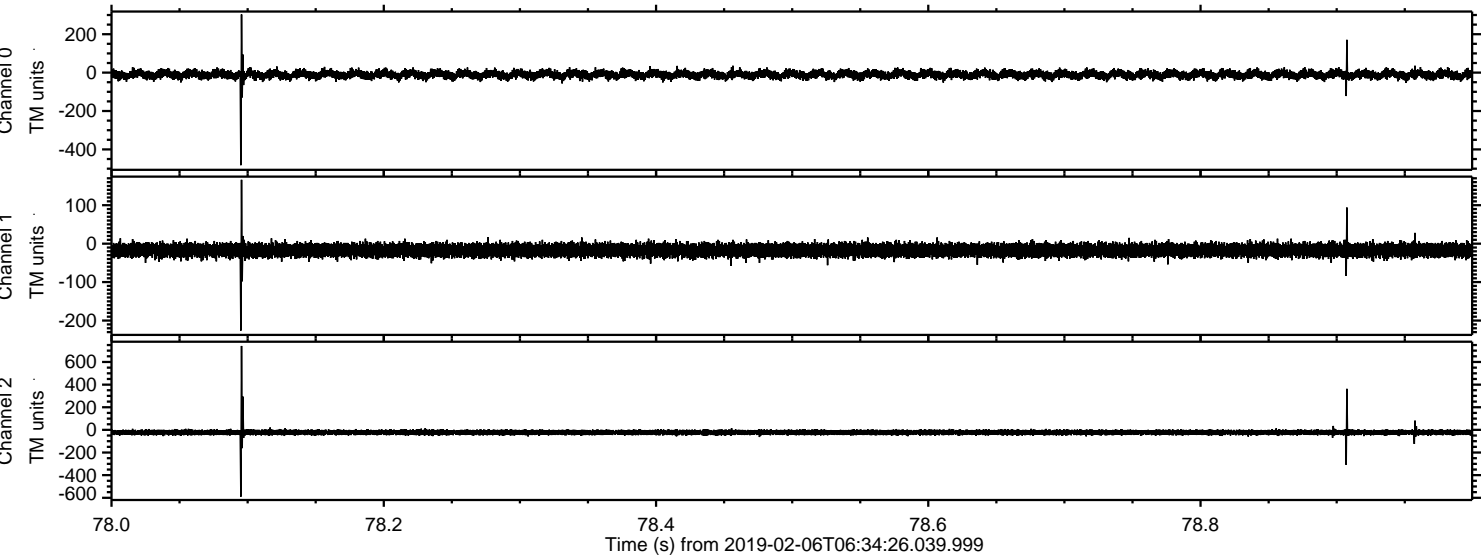


Processed Wed Feb 6 07:42:50 2019 by ELM ver.2012-10-06 from 001\_\_elm20190206\_063425\_\_dat00.bin



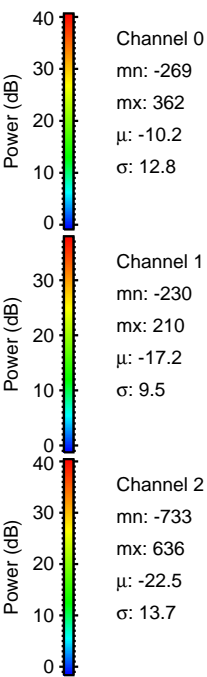
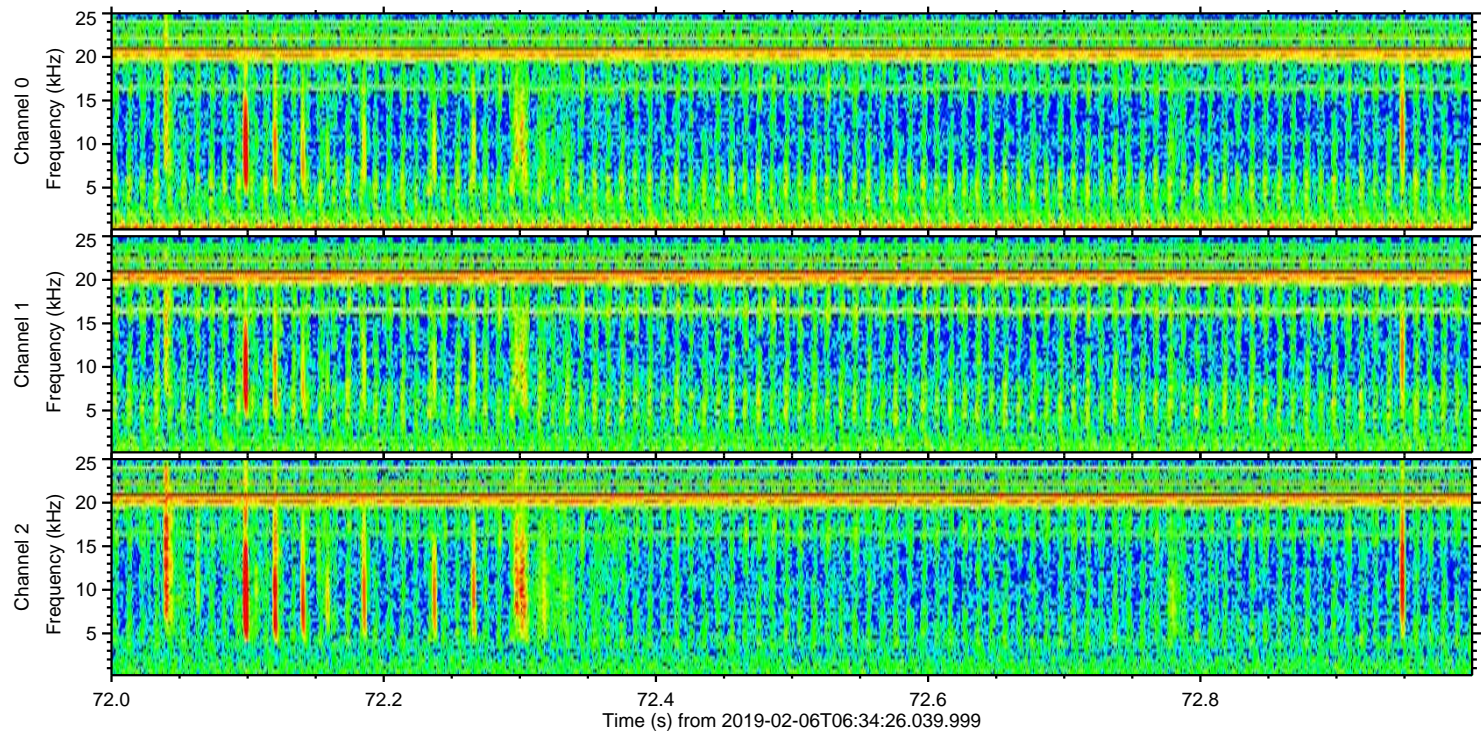
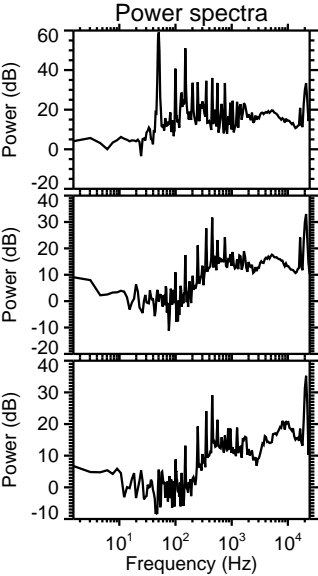
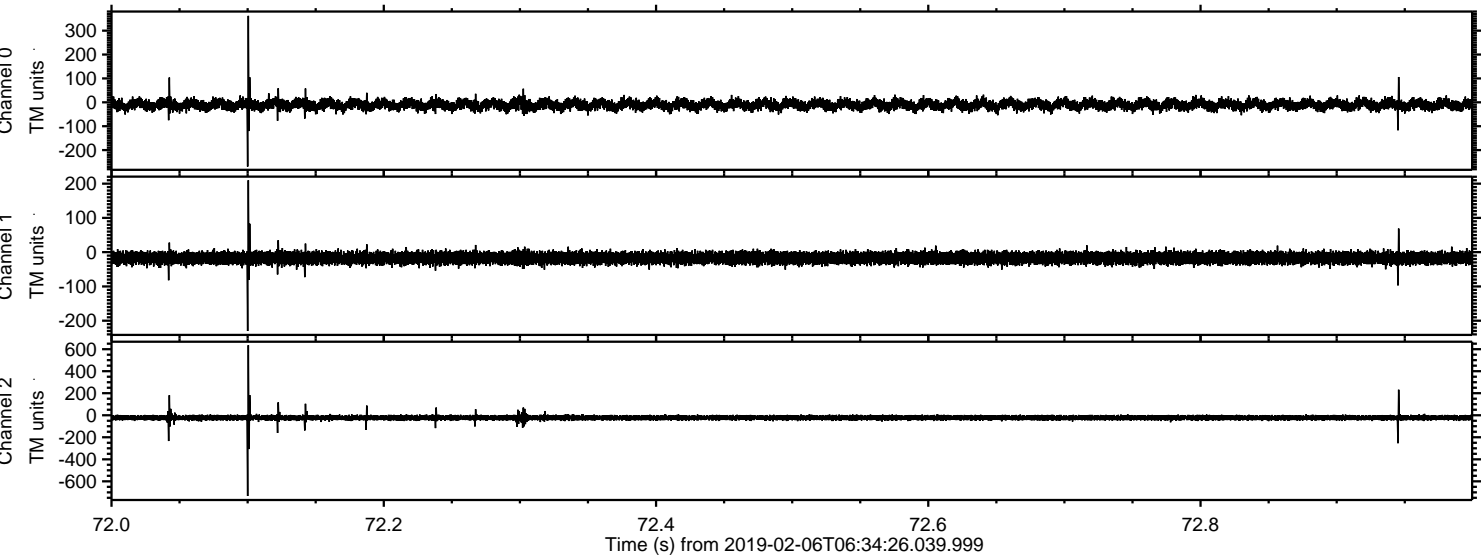


Processed Wed Feb 6 07:42:51 2019 by ELM ver.2012-10-06 from 001\_\_elm20190206\_063425\_\_dat00.bin



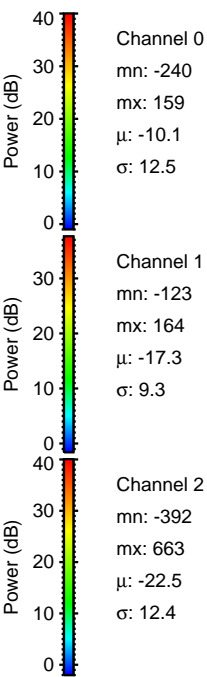
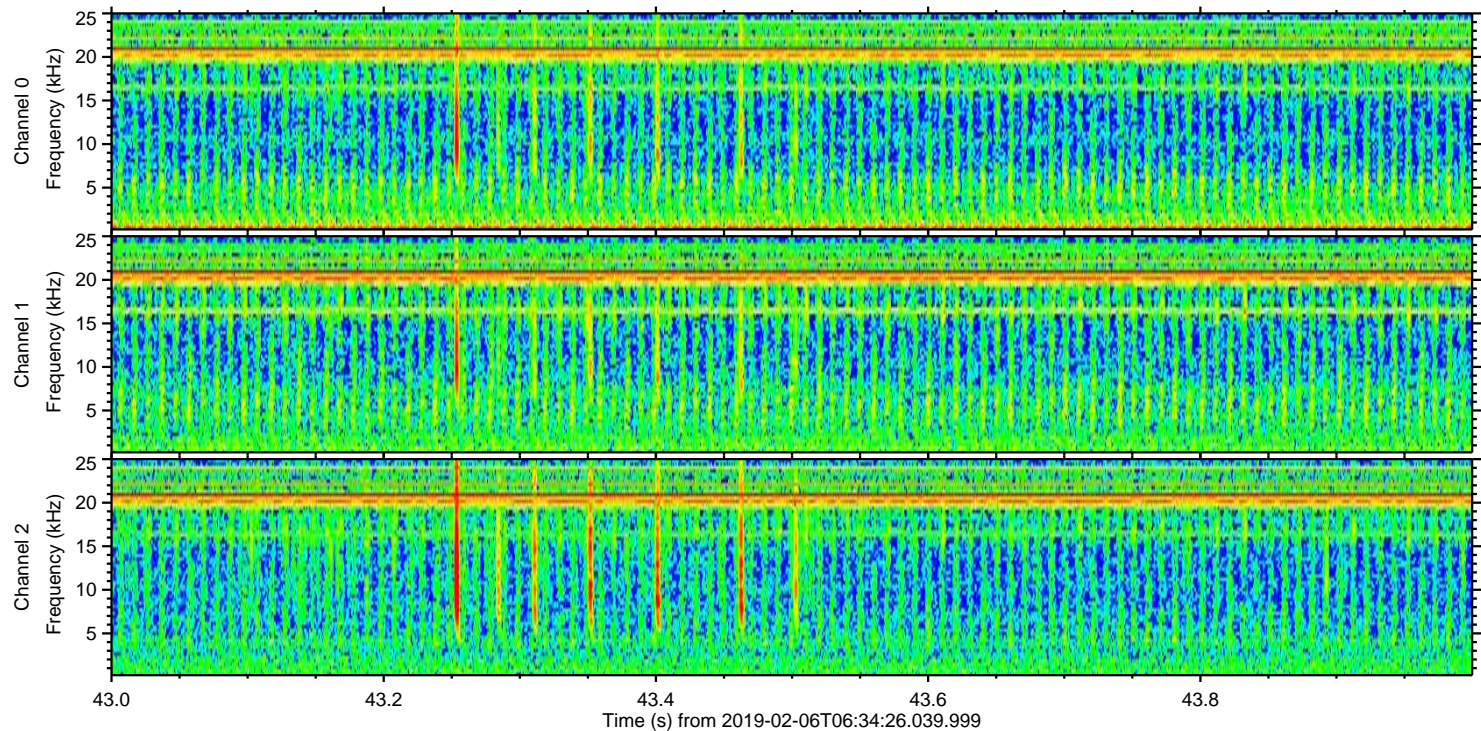
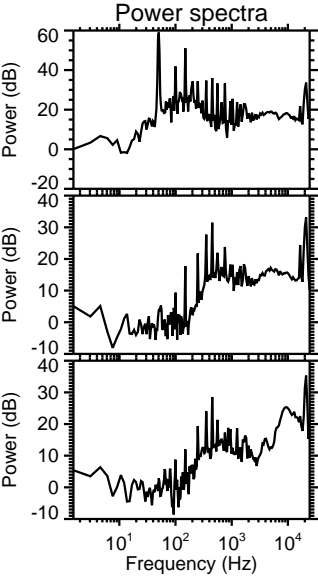
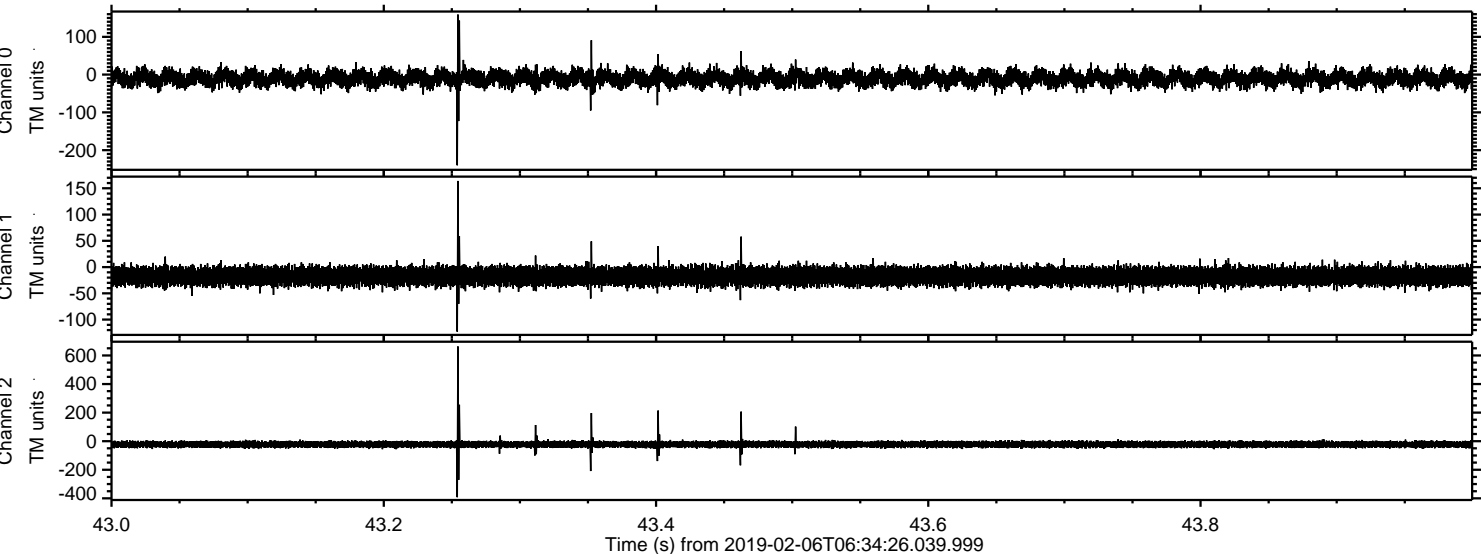


Processed Wed Feb 6 07:42:51 2019 by ELM ver.2012-10-06 from 001\_\_elm20190206\_063425\_\_dat00.bin



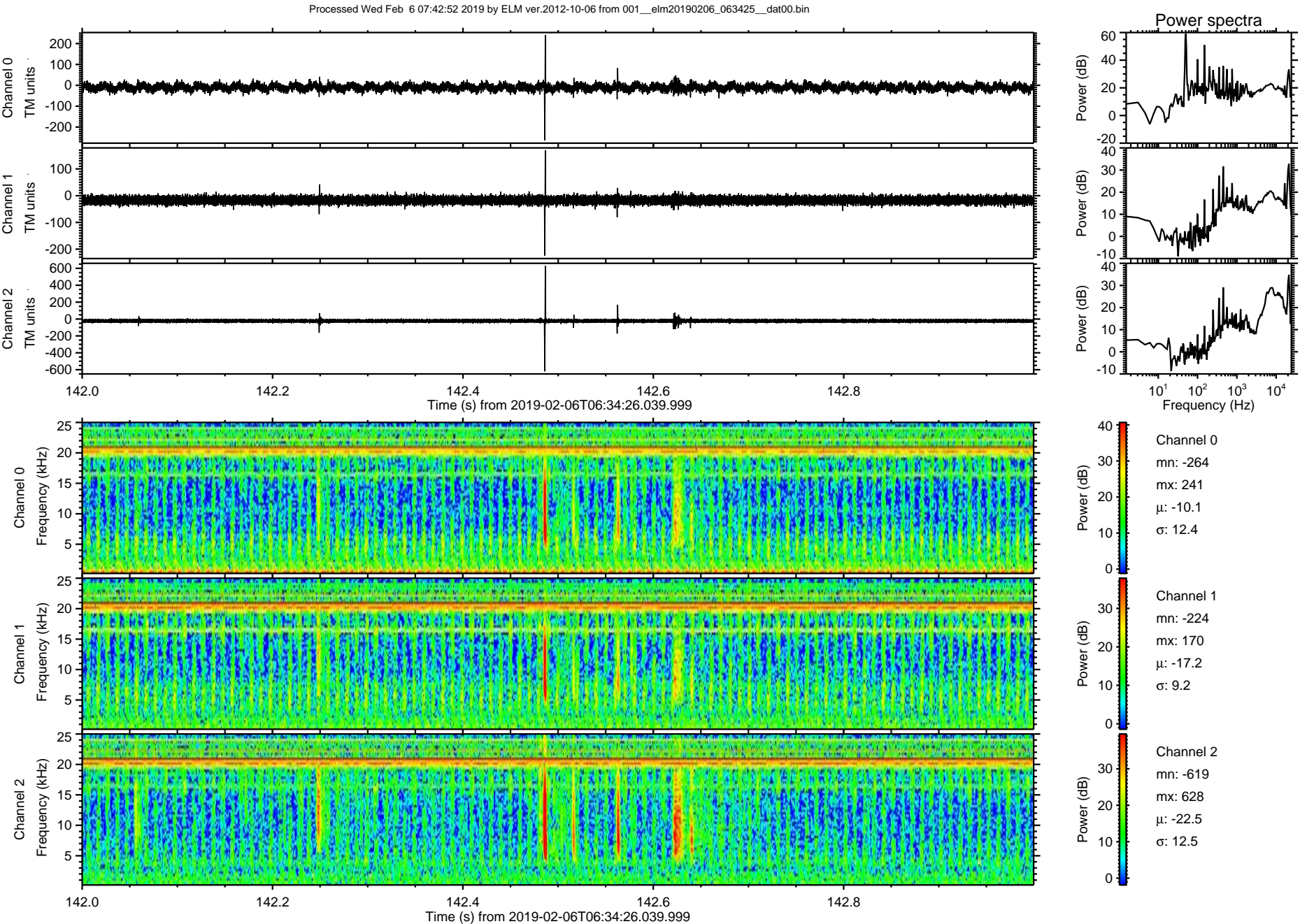


Processed Wed Feb 6 07:42:52 2019 by ELM ver.2012-10-06 from 001\_\_elm20190206\_063425\_\_dat00.bin



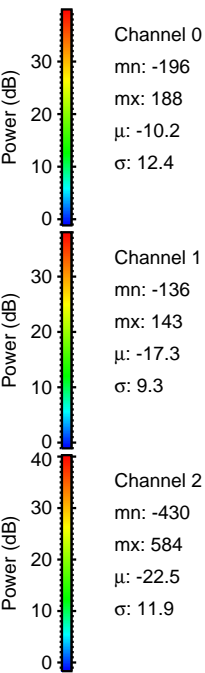
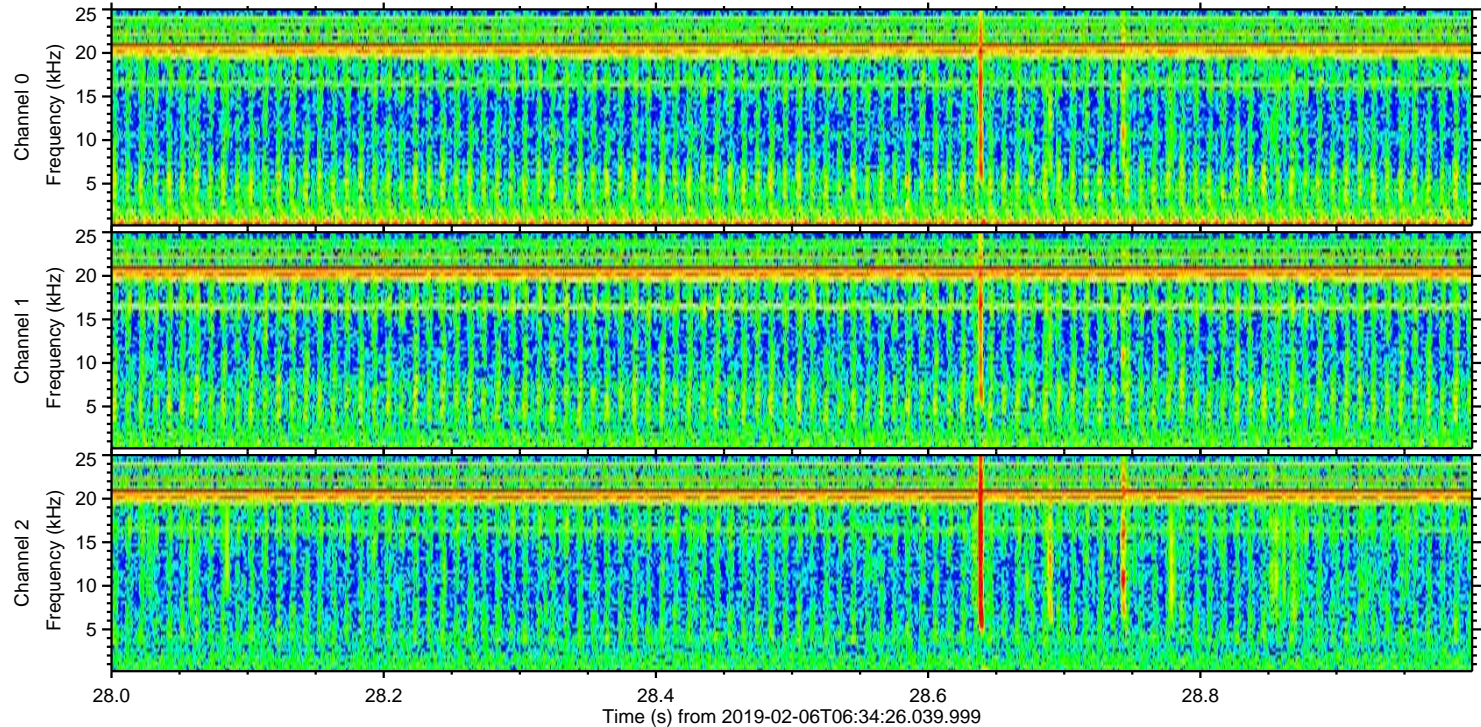
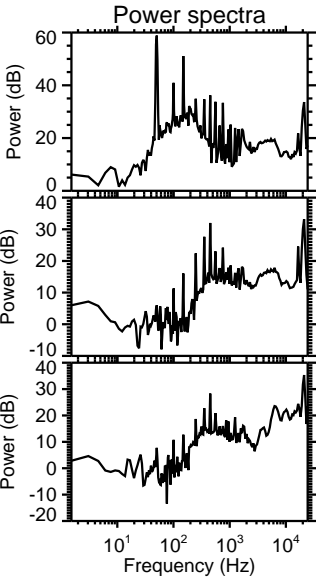
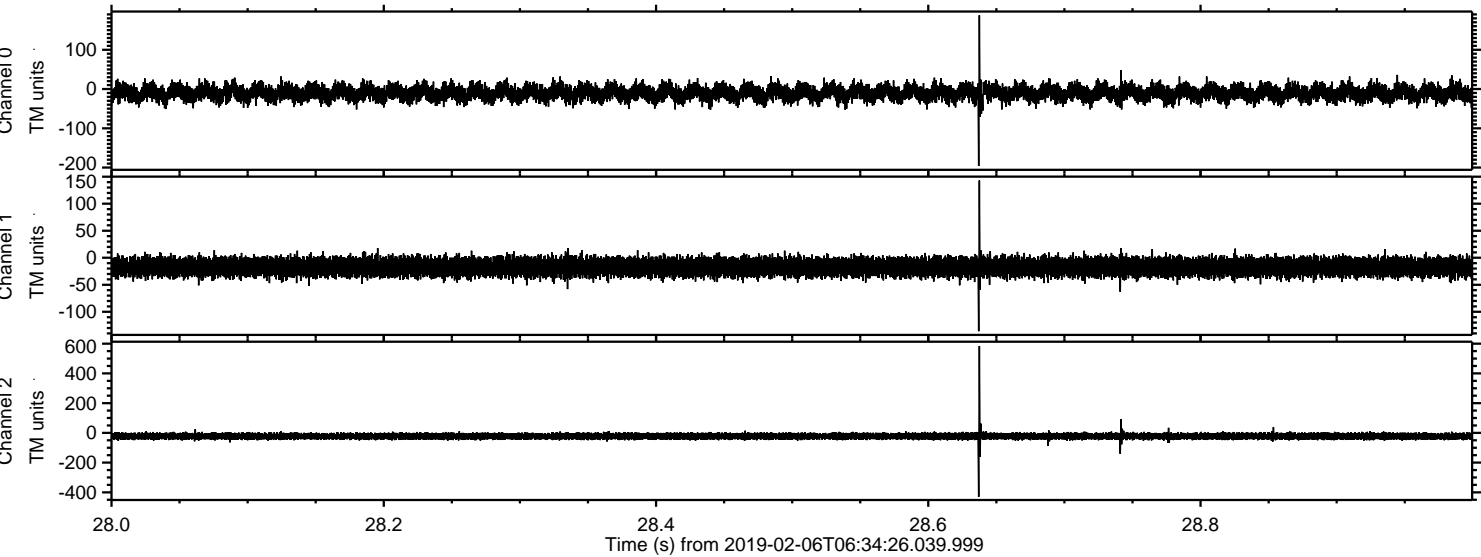


ELMAVAN 3D WAVEFORMS (Measured data sampled at 50 kHz) 51000 packets of 144 samples from 2019-02-06T06:34:26.039.999. Part 143/147



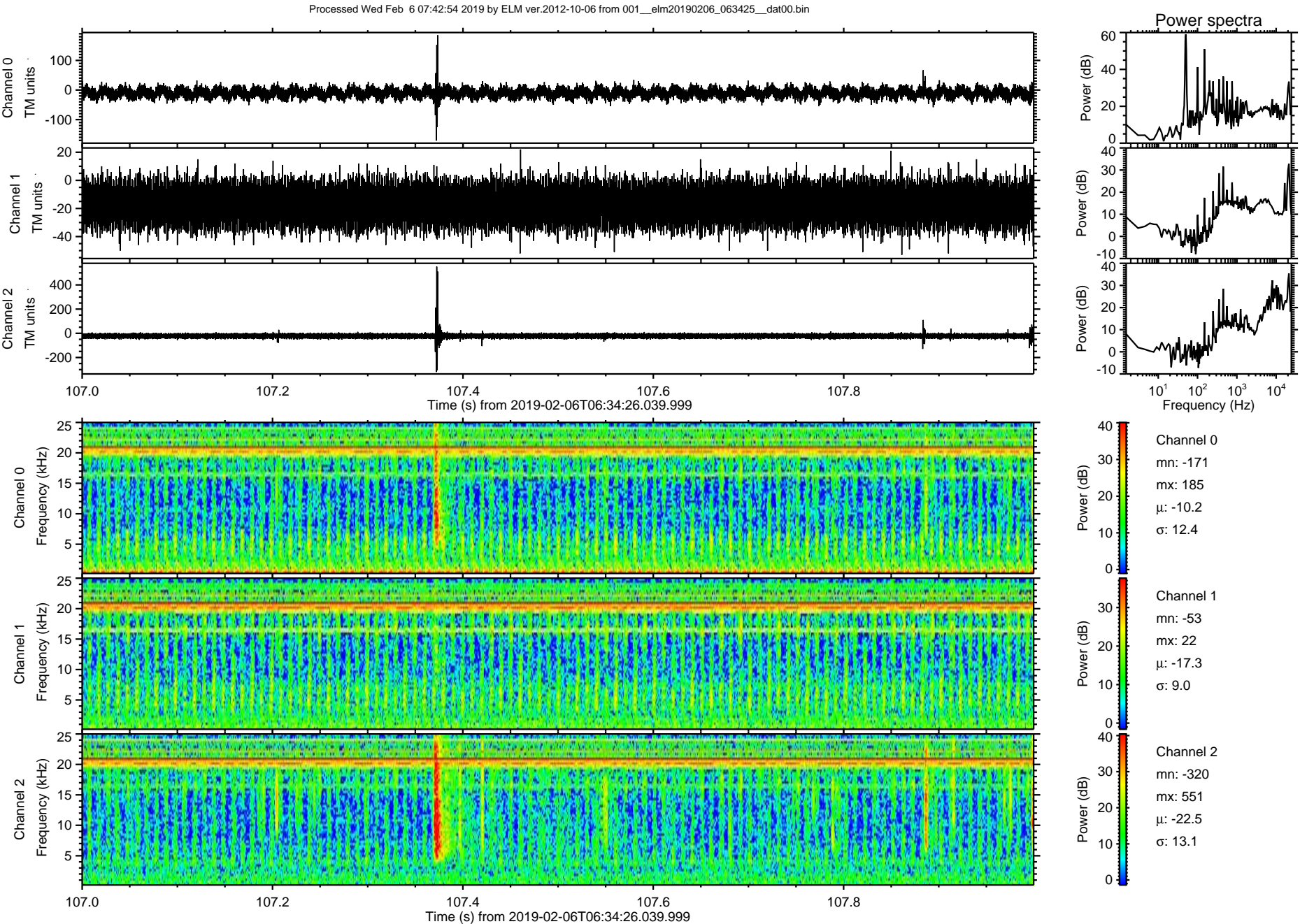


Processed Wed Feb 6 07:42:53 2019 by ELM ver.2012-10-06 from 001\_\_elm20190206\_063425\_\_dat00.bin



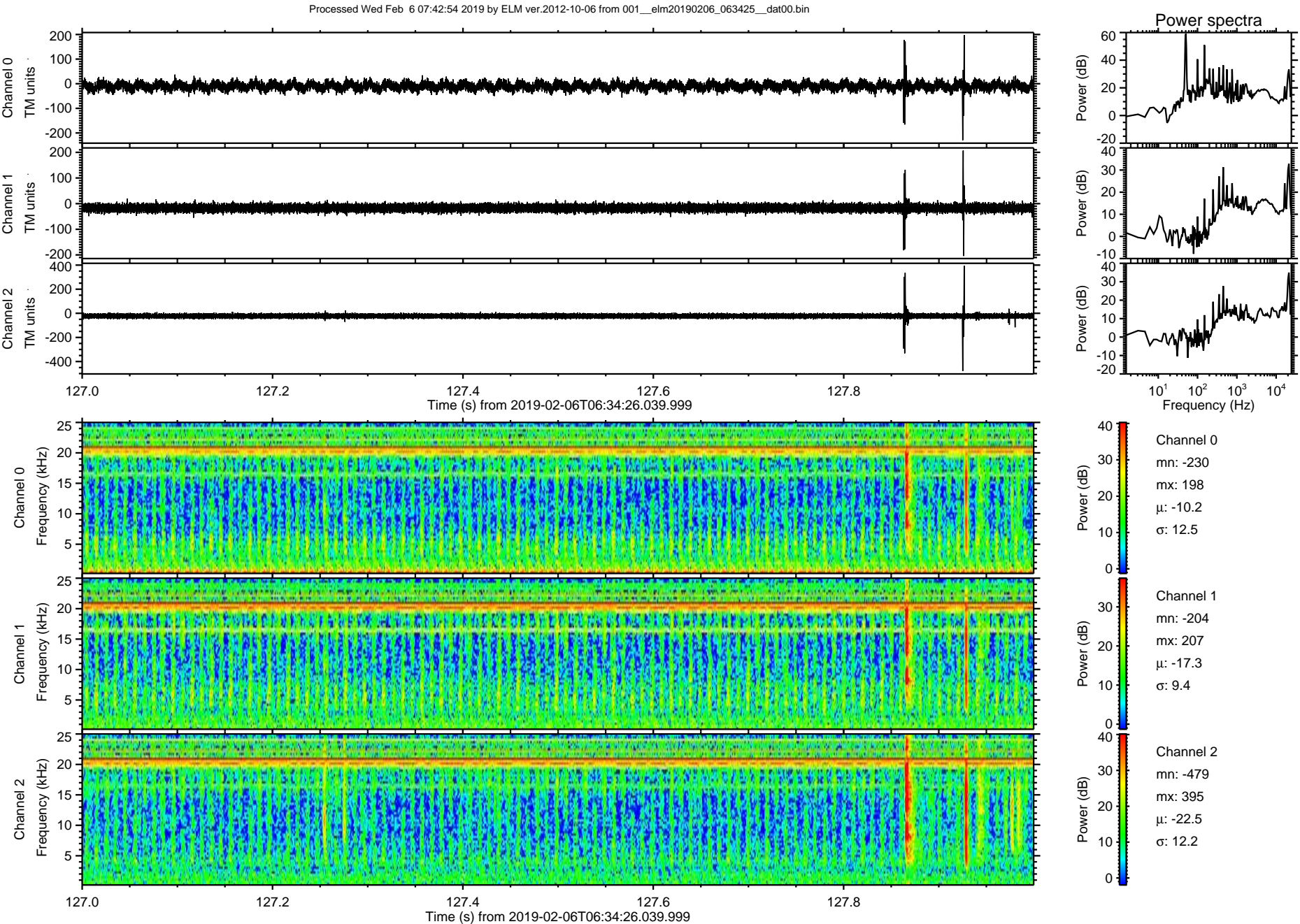


ELMAVAN 3D WAVEFORMS (Measured data sampled at 50 kHz) 51000 packets of 144 samples from 2019-02-06T06:34:26.039.999. Part 108/147





ELMAVAN 3D WAVEFORMS (Measured data sampled at 50 kHz) 51000 packets of 144 samples from 2019-02-06T06:34:26.039.999. Part 128/147





Processed Wed Feb 6 07:42:55 2019 by ELM ver.2012-10-06 from 001\_\_elm20190206\_063425\_\_dat00.bin

