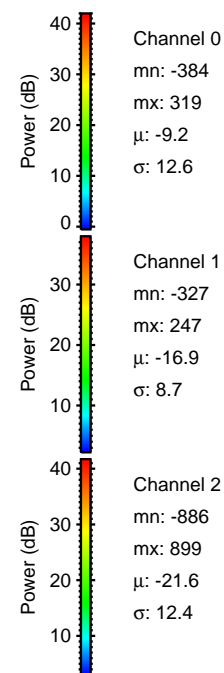
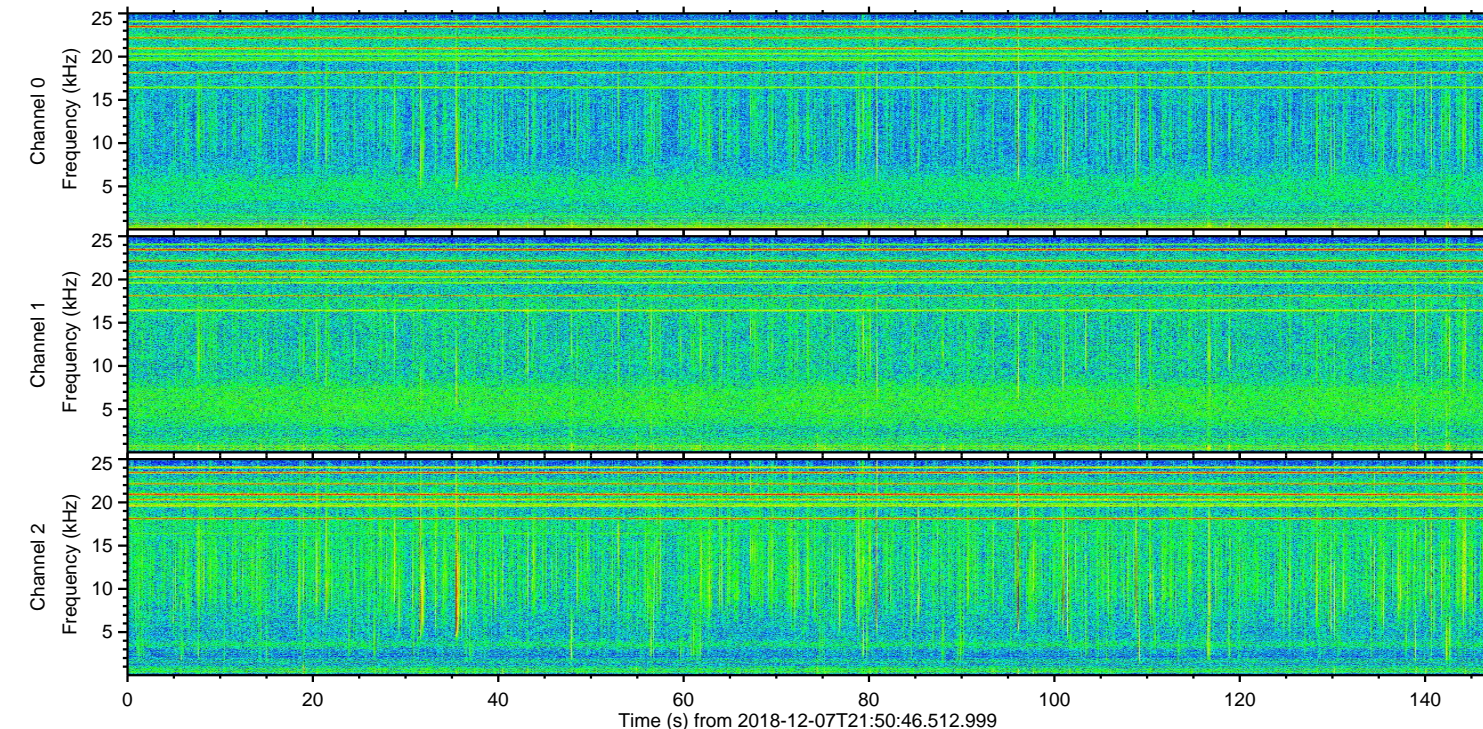
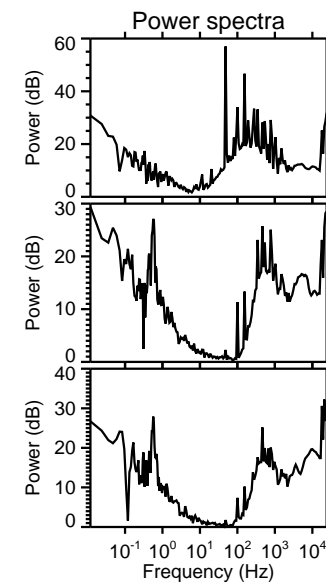
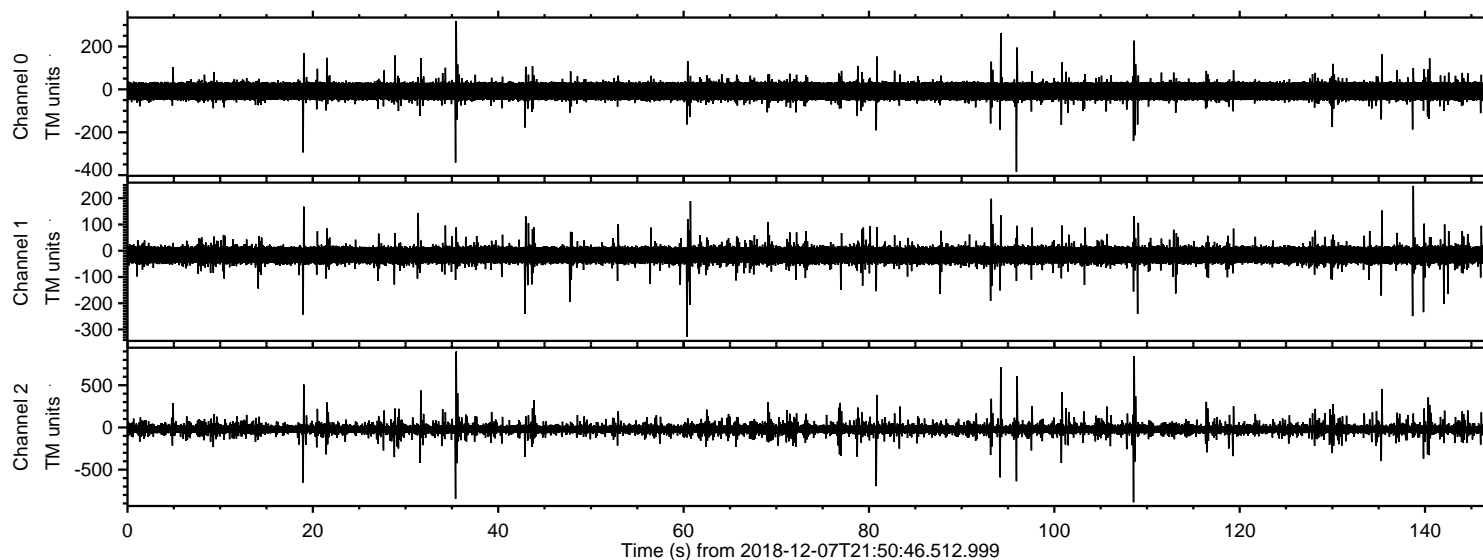


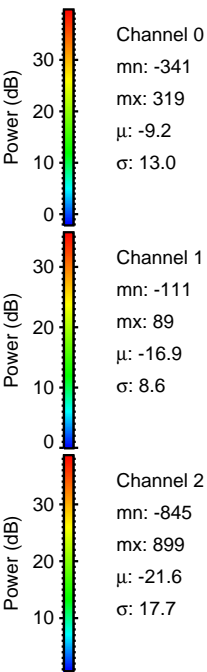
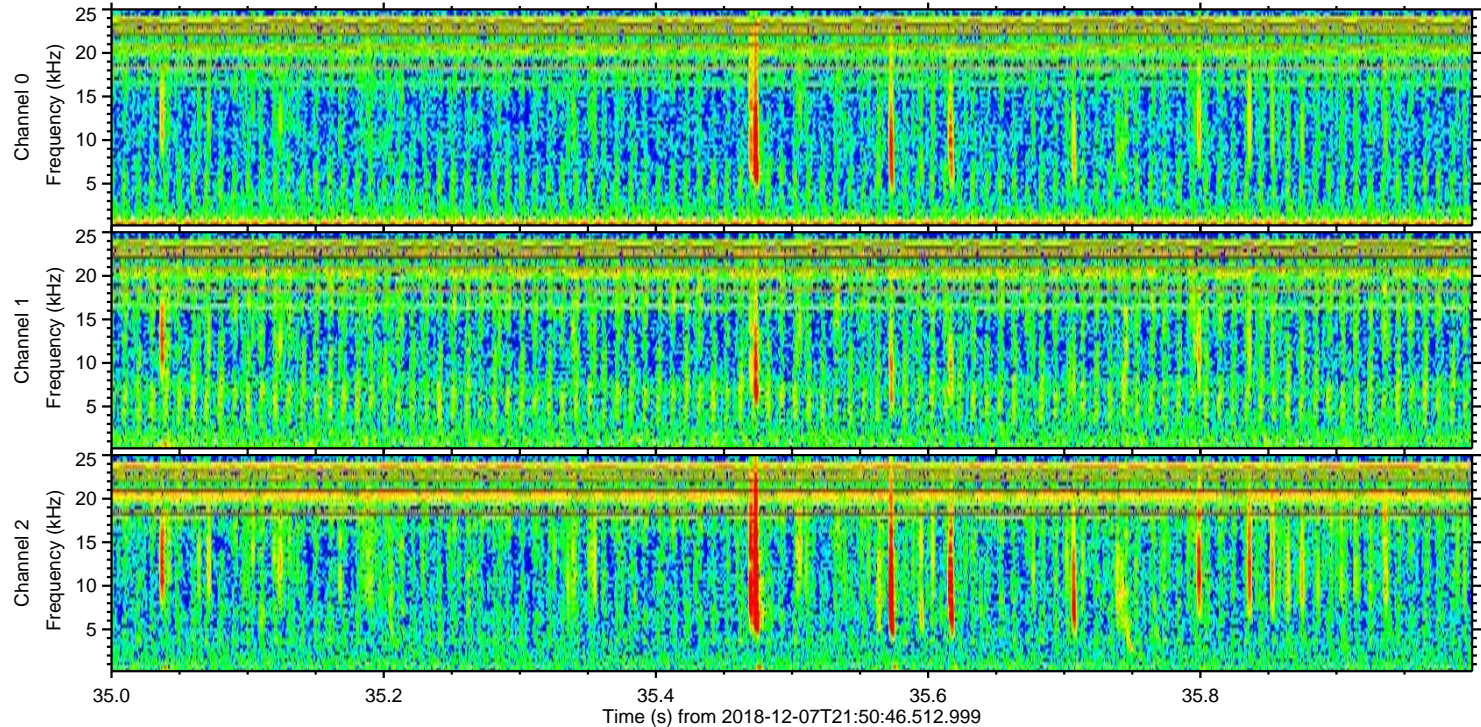
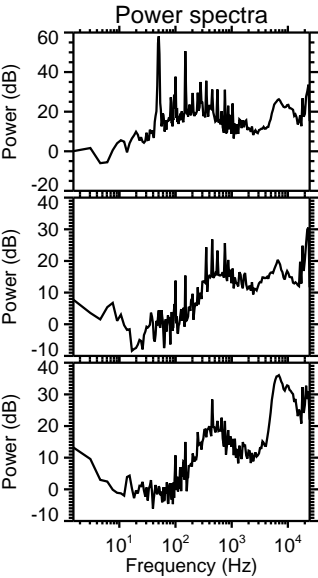
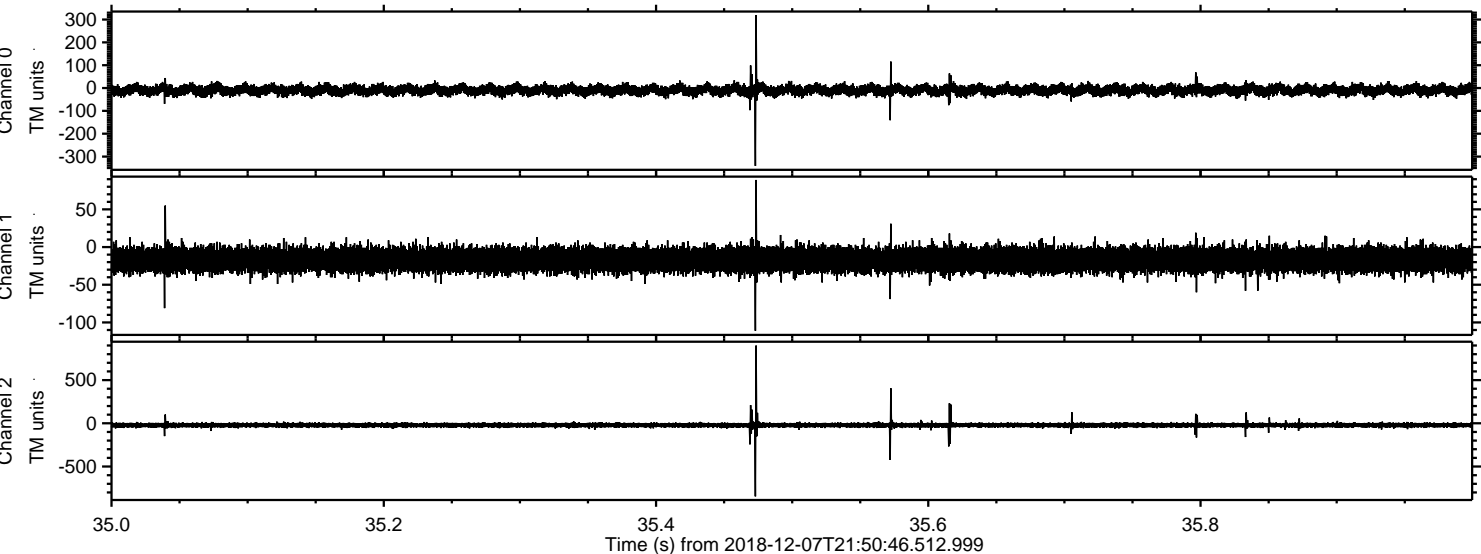
# ELMAVAN 3D WAVEFORMS (Measured data sampled at 50 kHz) 51000 packets of 144 samples from 2018-12-07T21:50:46.512.999.

Processed Fri Dec 7 22:58:21 2018 by ELM ver.2012-10-06 from 001\_\_elm20181207\_215045\_\_dat00.bin





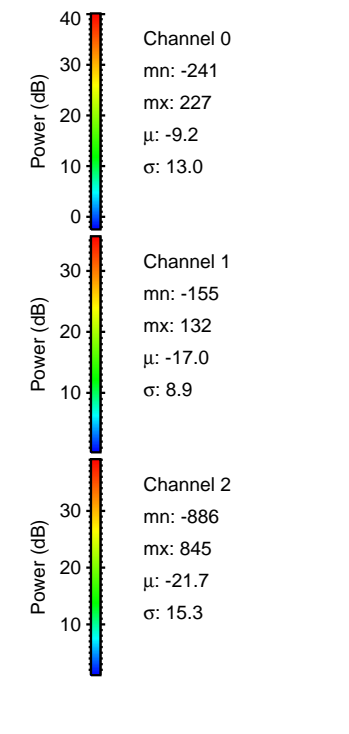
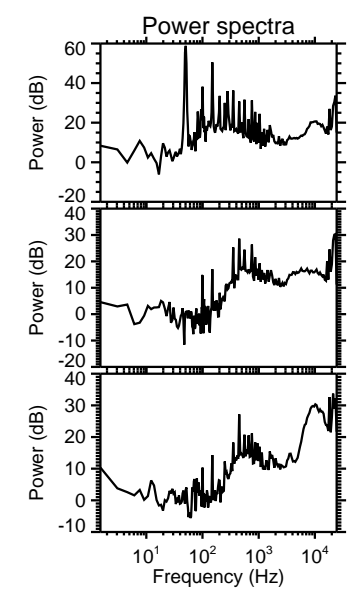
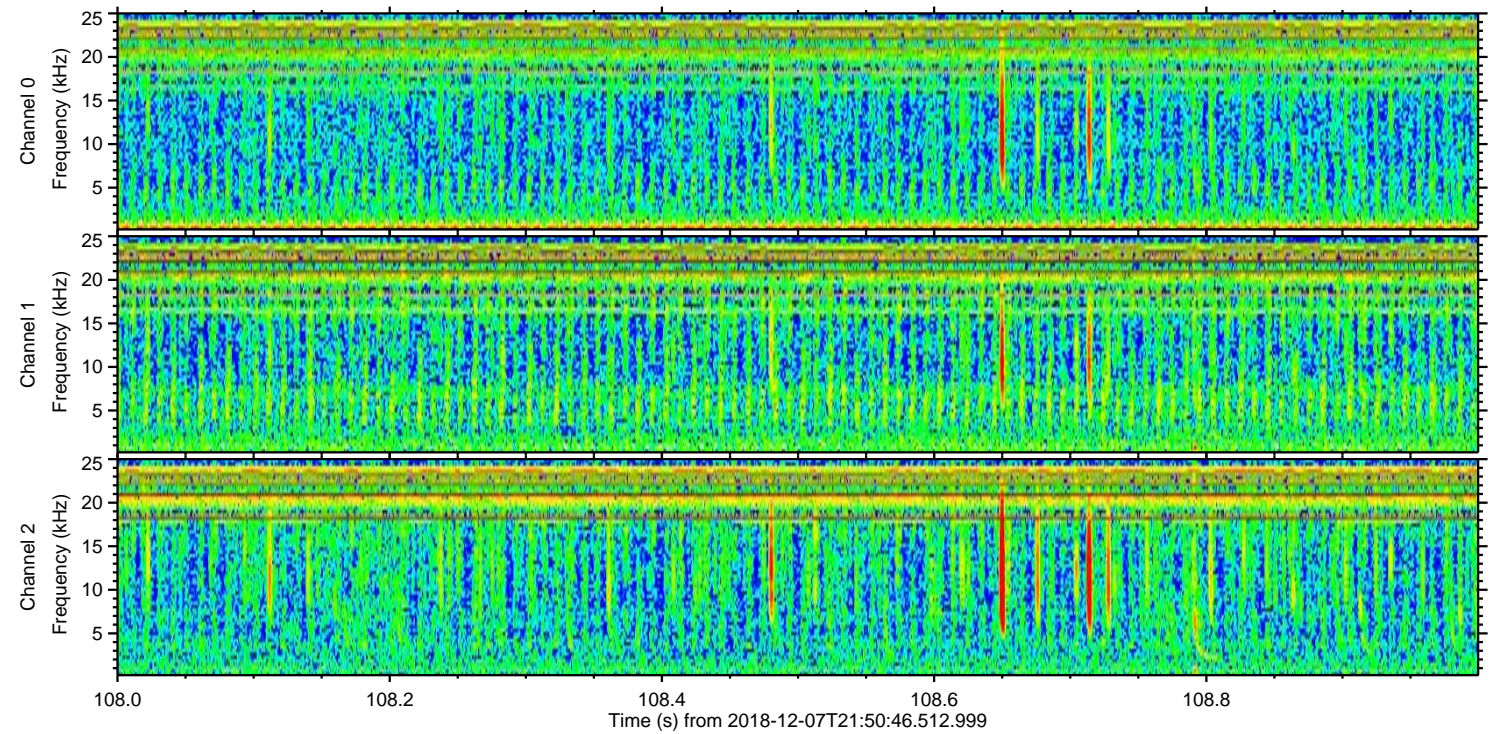
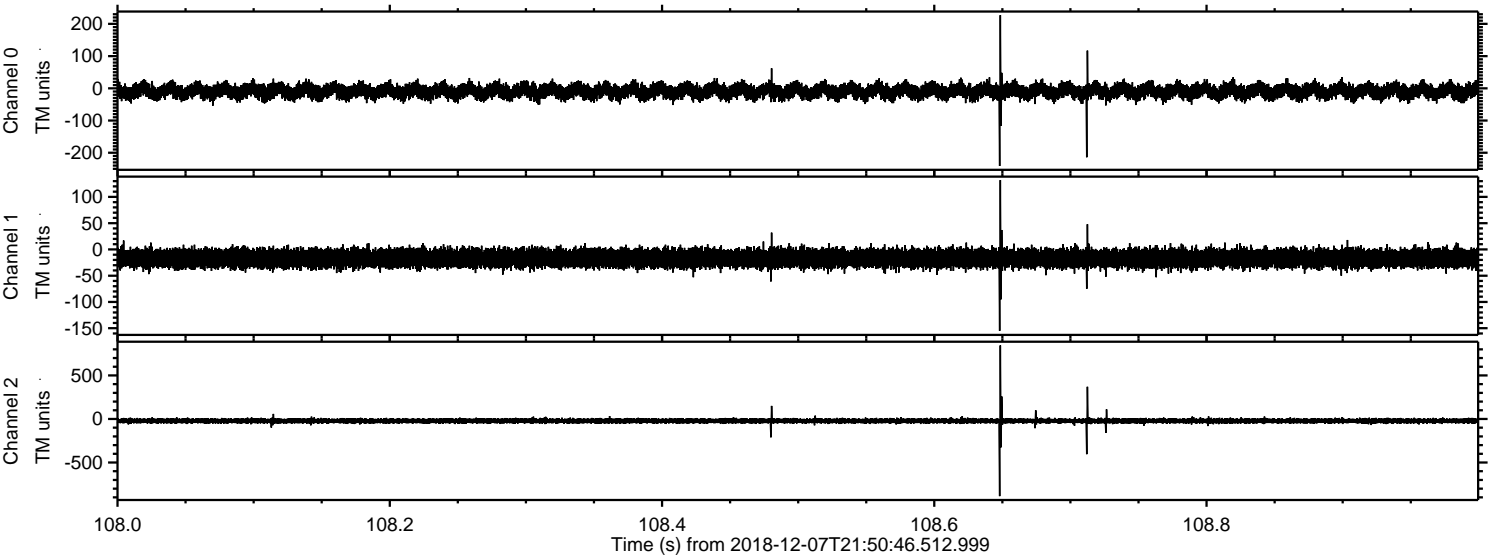
Processed Fri Dec 7 22:58:28 2018 by ELM ver.2012-10-06 from 001\_\_elm20181207\_215045\_\_dat00.bin





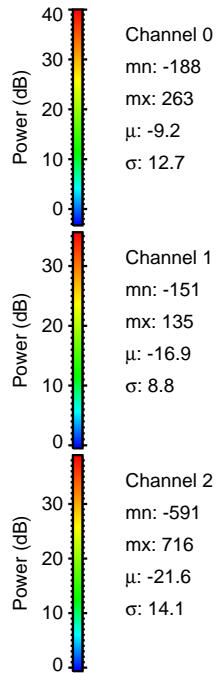
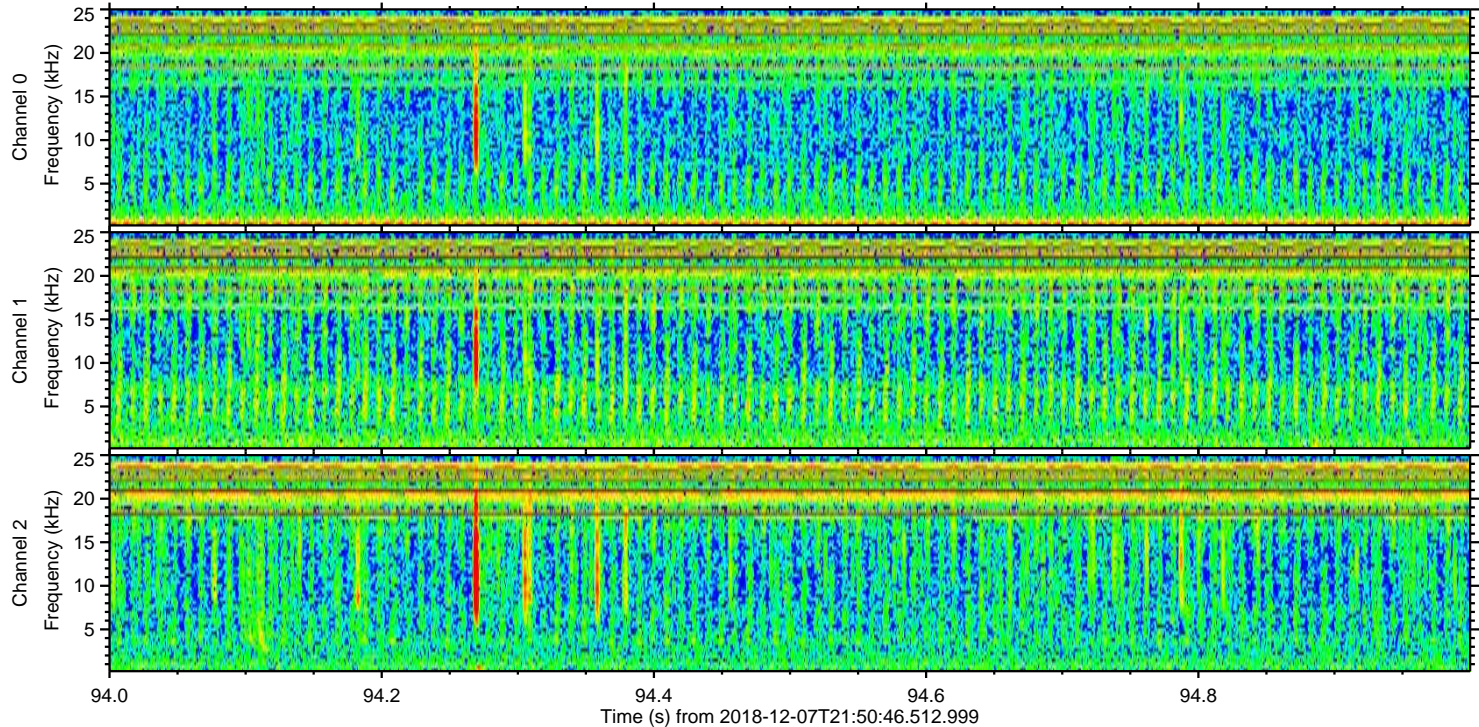
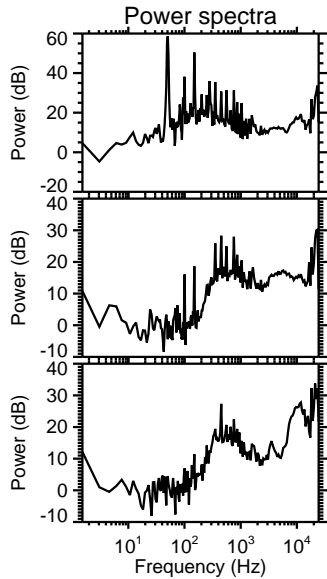
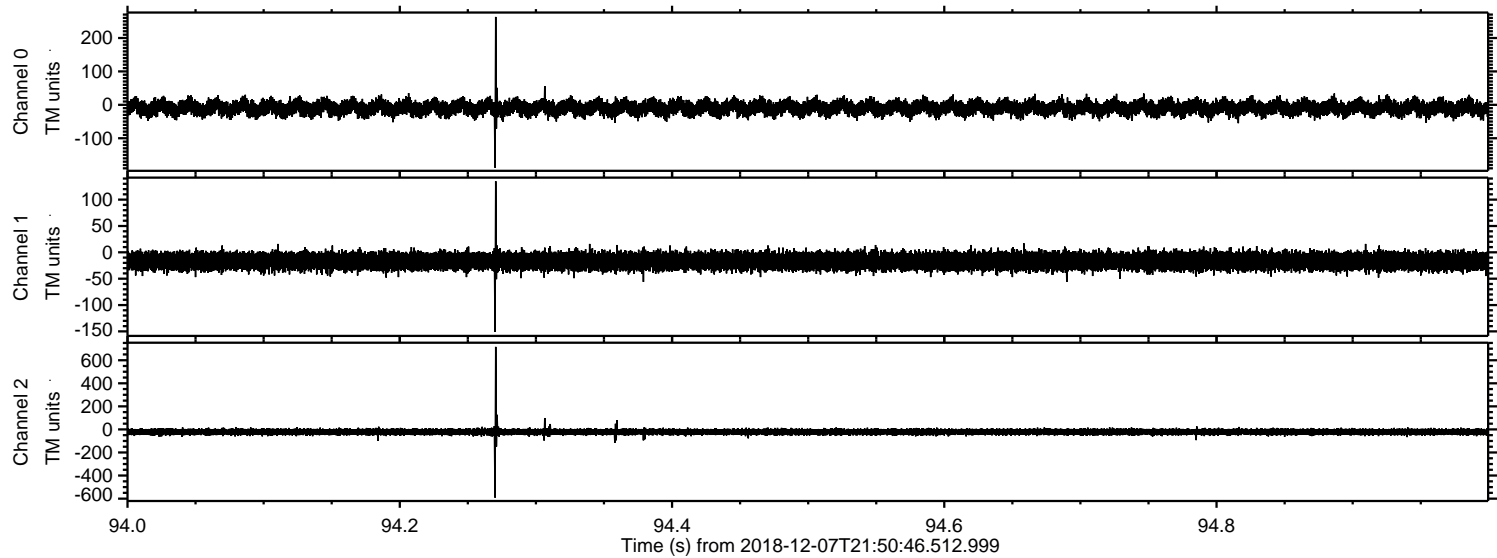
ELMAVAN 3D WAVEFORMS (Measured data sampled at 50 kHz) 51000 packets of 144 samples from 2018-12-07T21:50:46.512.999. Part 109/147

Processed Fri Dec 7 22:58:29 2018 by ELM ver.2012-10-06 from 001\_\_elm20181207\_215045\_\_dat00.bin



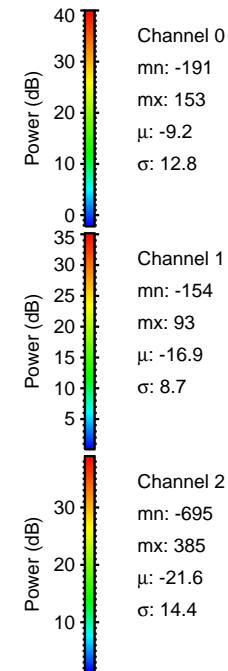
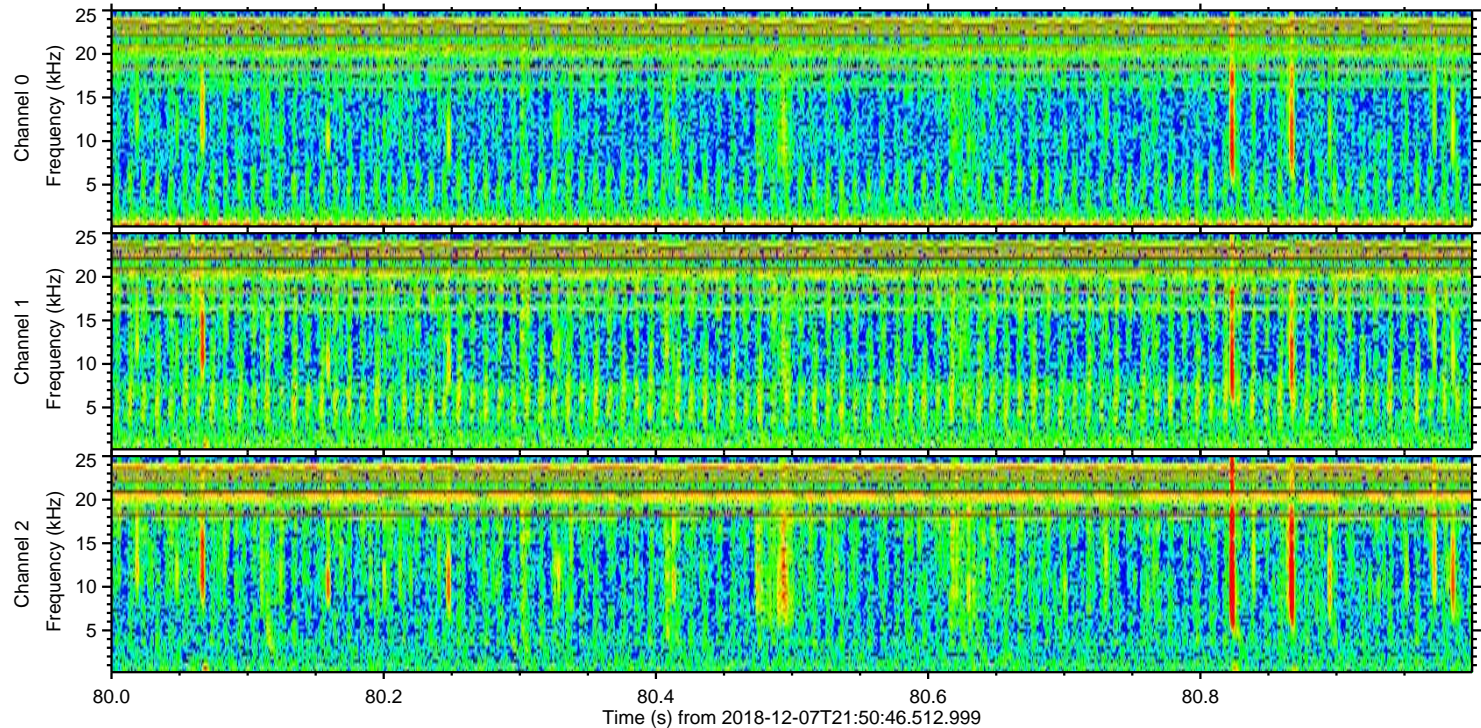
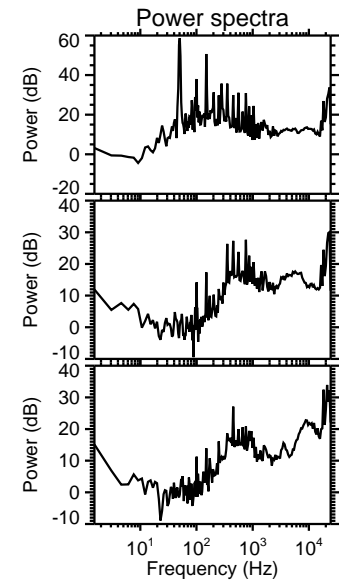
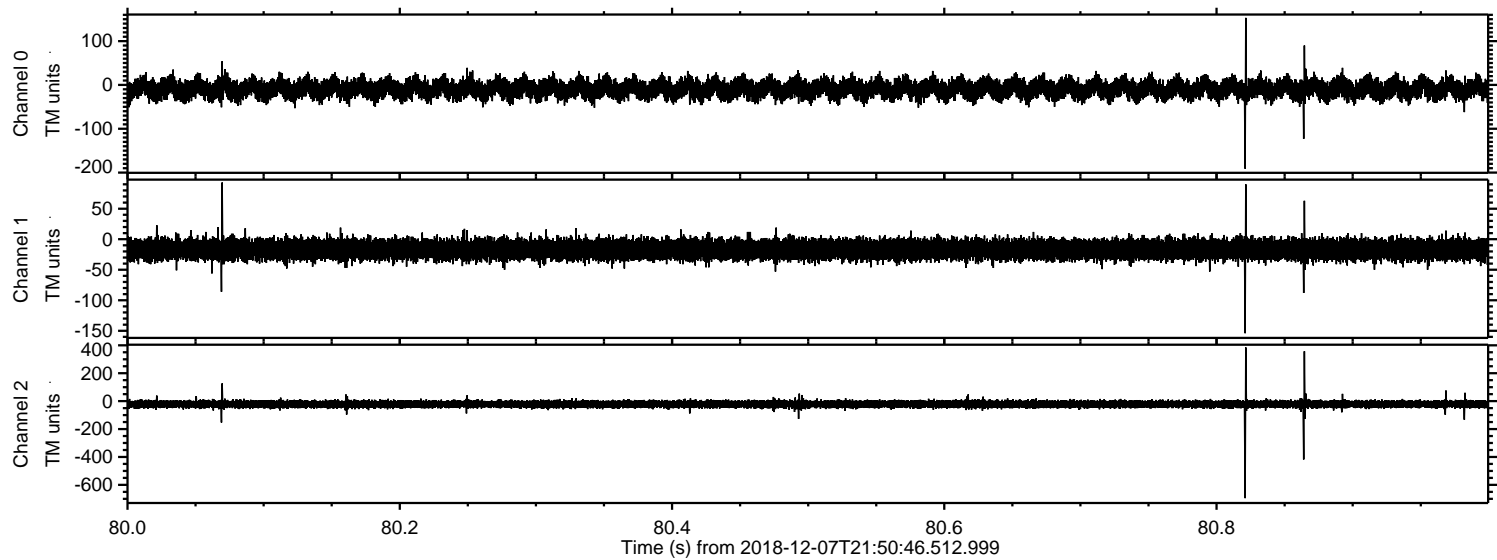


Processed Fri Dec 7 22:58:30 2018 by ELM ver.2012-10-06 from 001\_\_elm20181207\_215045\_\_dat00.bin



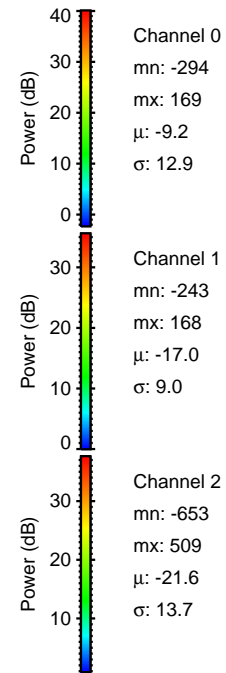
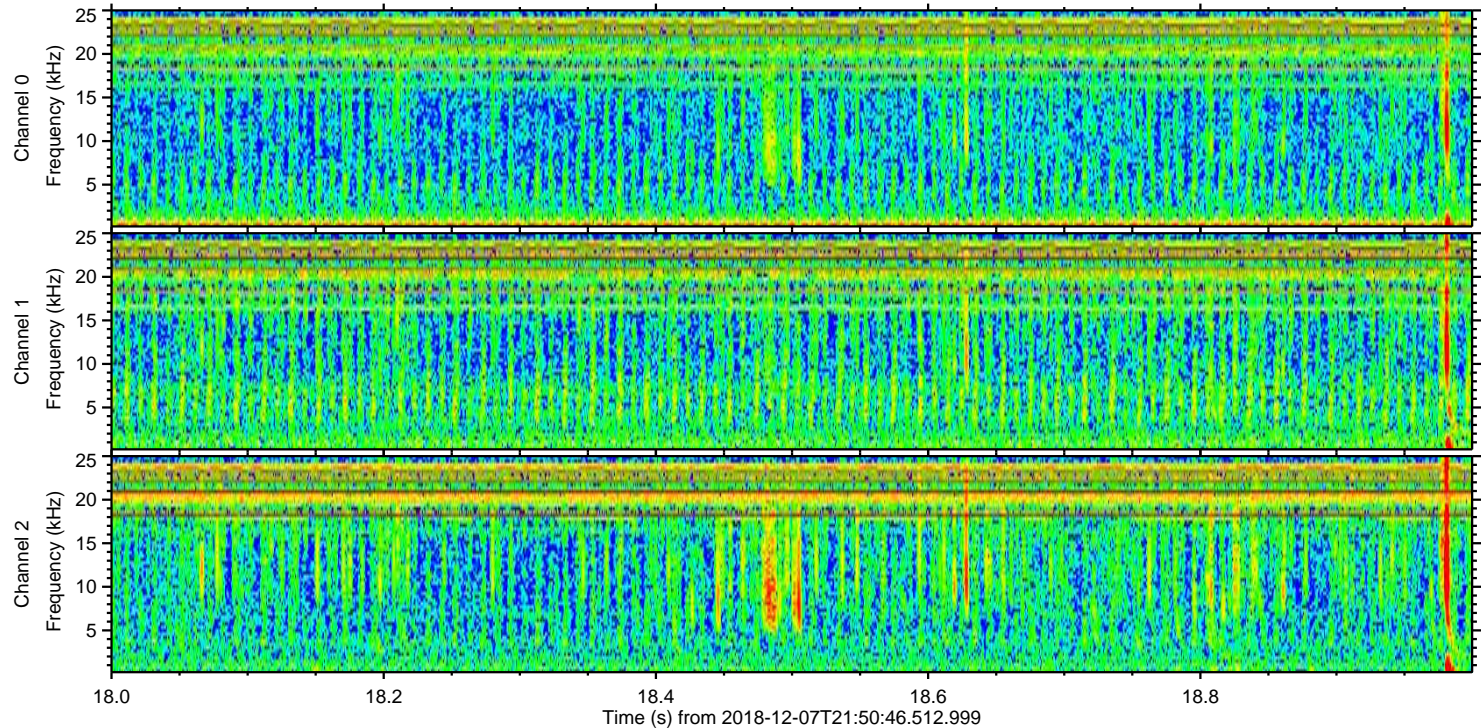
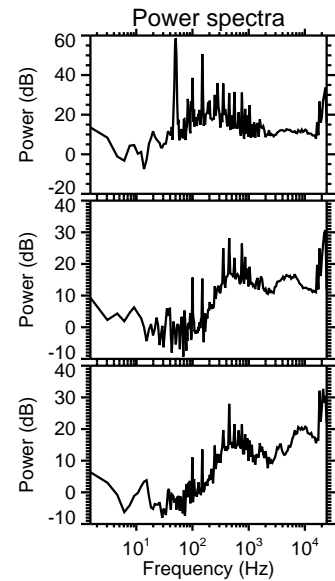
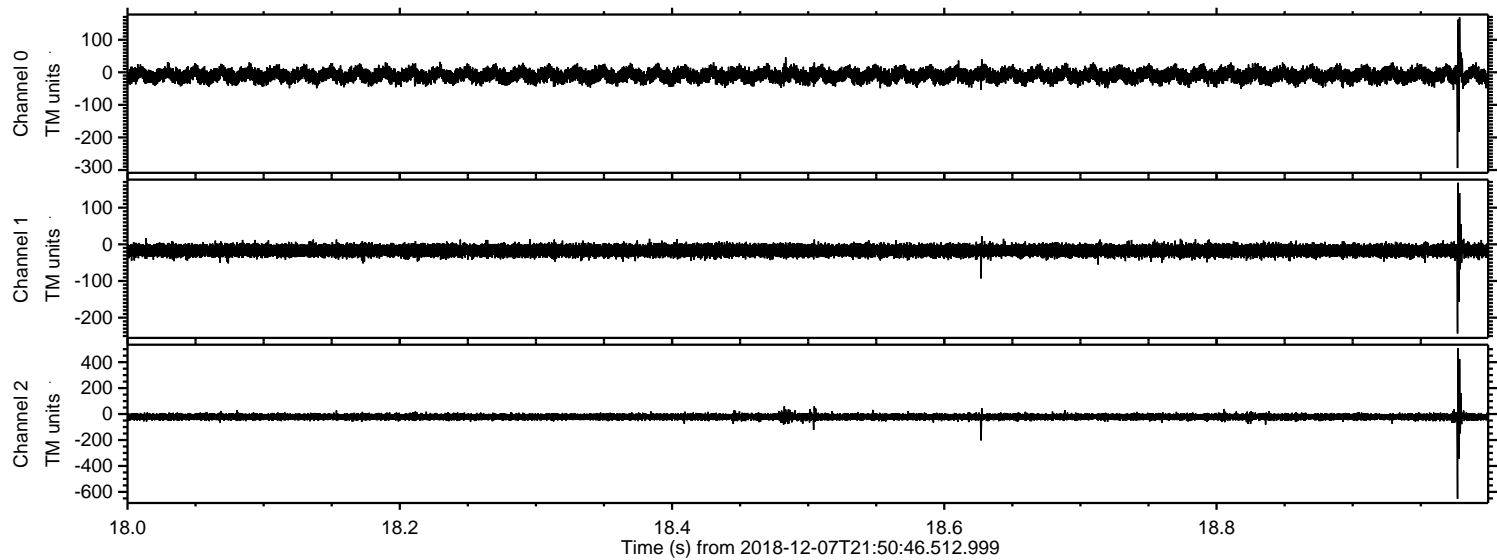


Processed Fri Dec 7 22:58:30 2018 by ELM ver.2012-10-06 from 001\_\_elm20181207\_215045\_\_dat00.bin



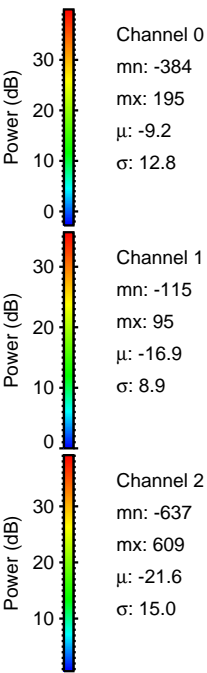
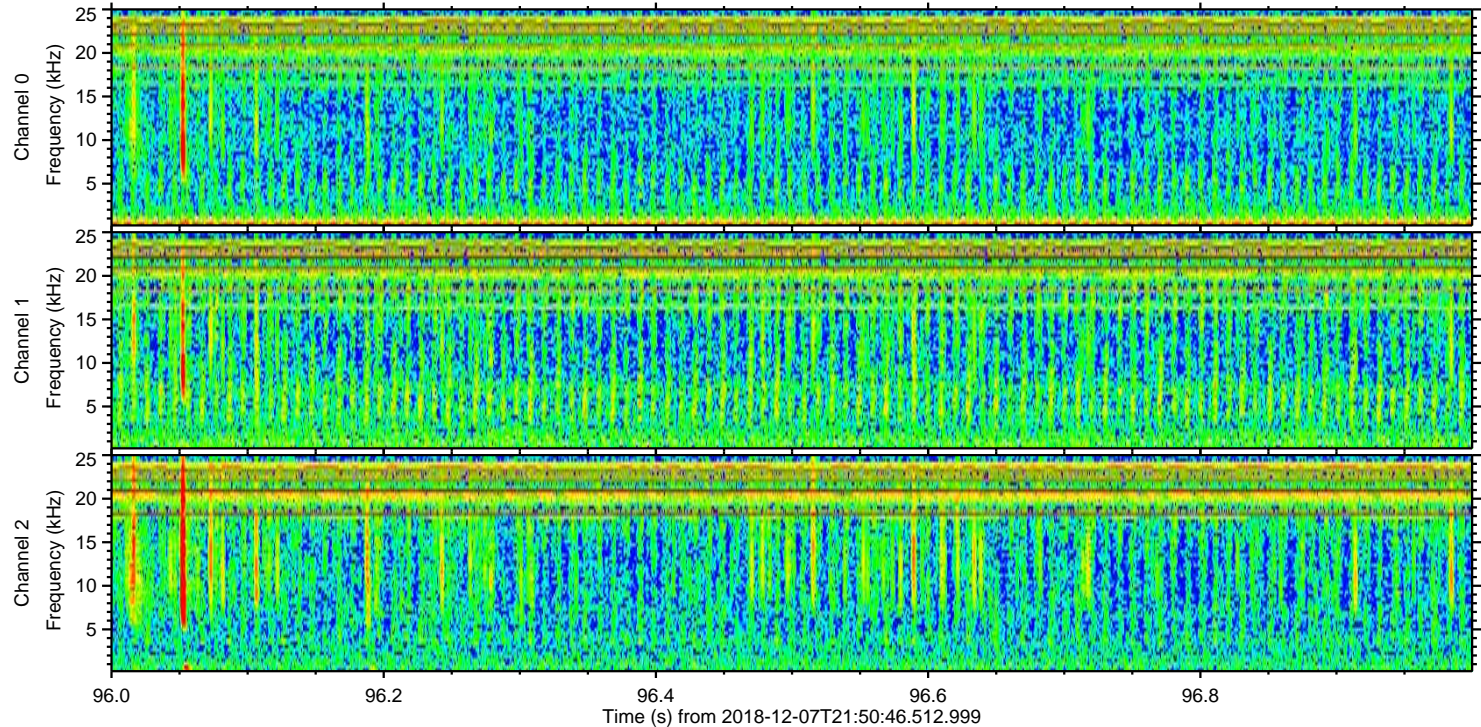
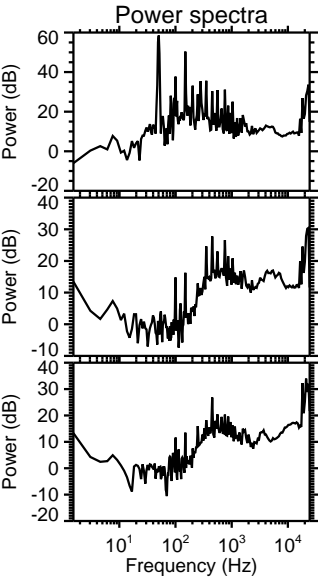
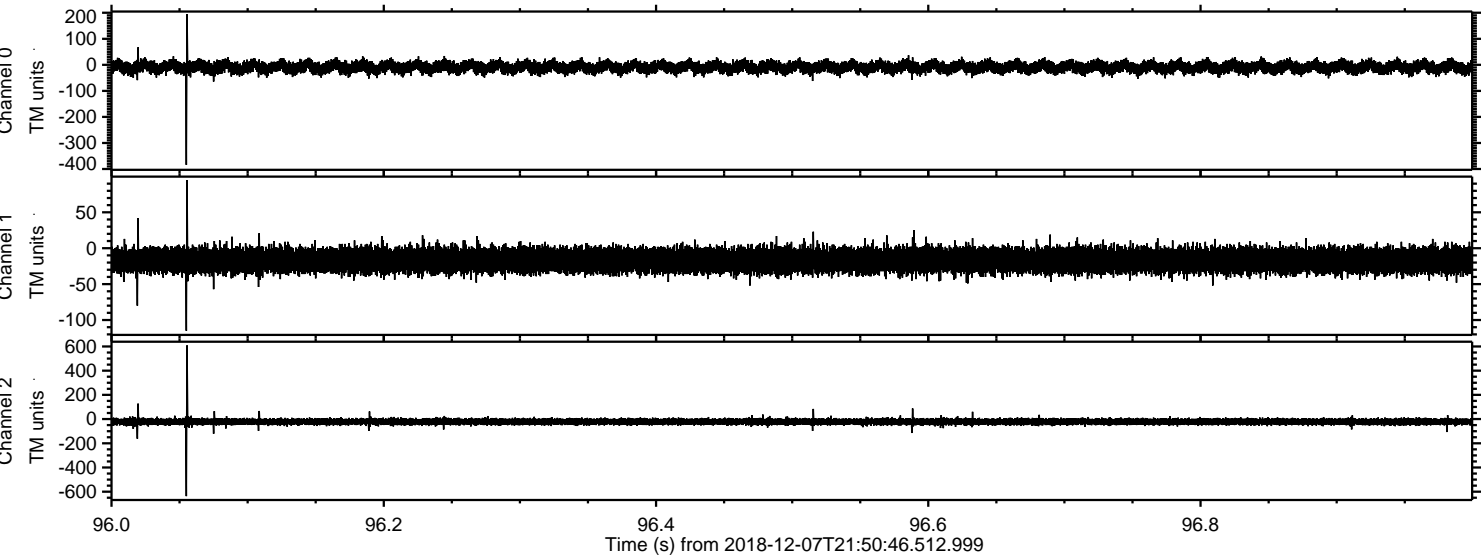


Processed Fri Dec 7 22:58:31 2018 by ELM ver.2012-10-06 from 001\_\_elm20181207\_215045\_\_dat00.bin



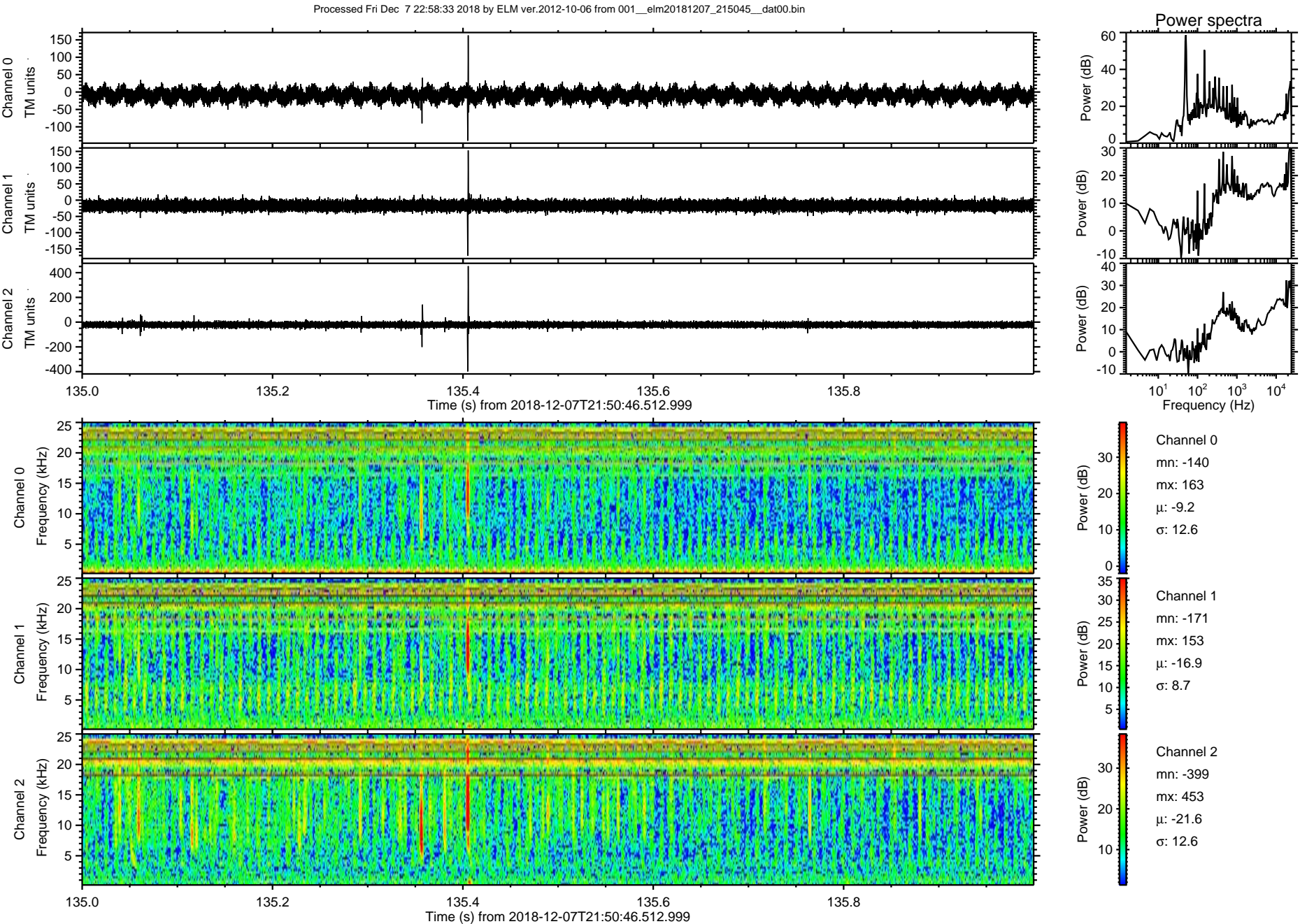


Processed Fri Dec 7 22:58:32 2018 by ELM ver.2012-10-06 from 001\_\_elm20181207\_215045\_\_dat00.bin



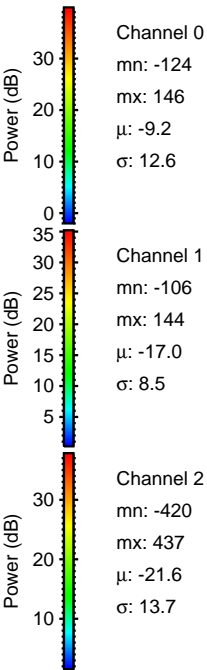
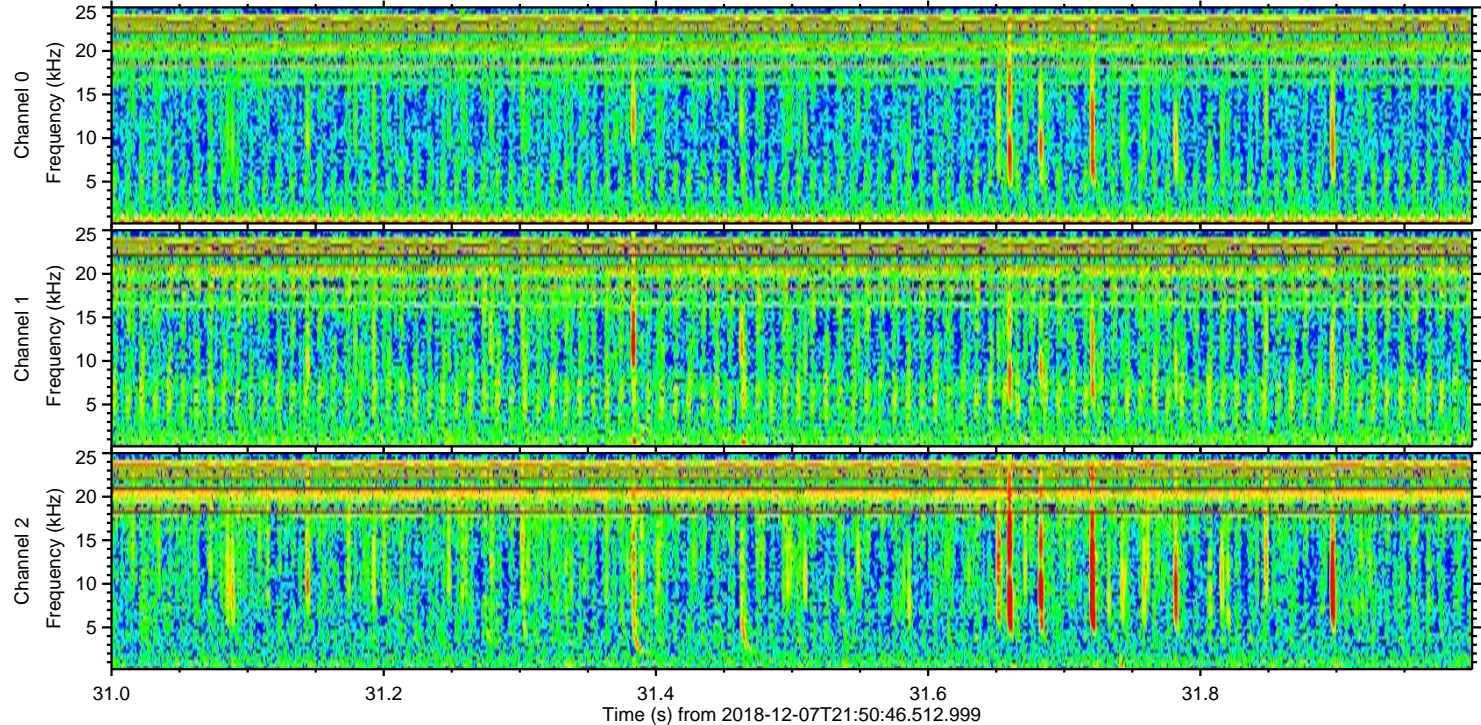
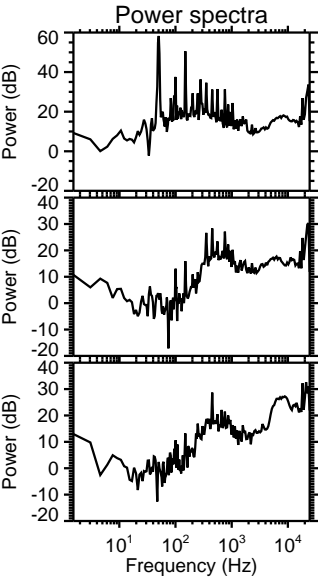
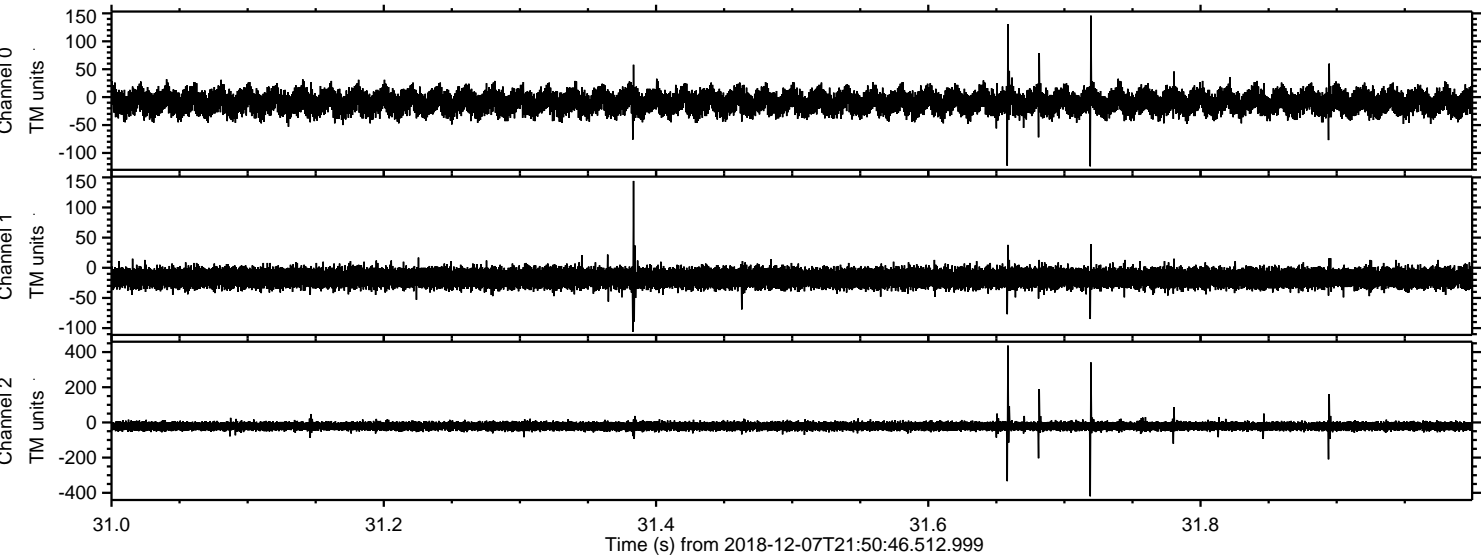


ELMAVAN 3D WAVEFORMS (Measured data sampled at 50 kHz) 51000 packets of 144 samples from 2018-12-07T21:50:46.512.999. Part 136/147



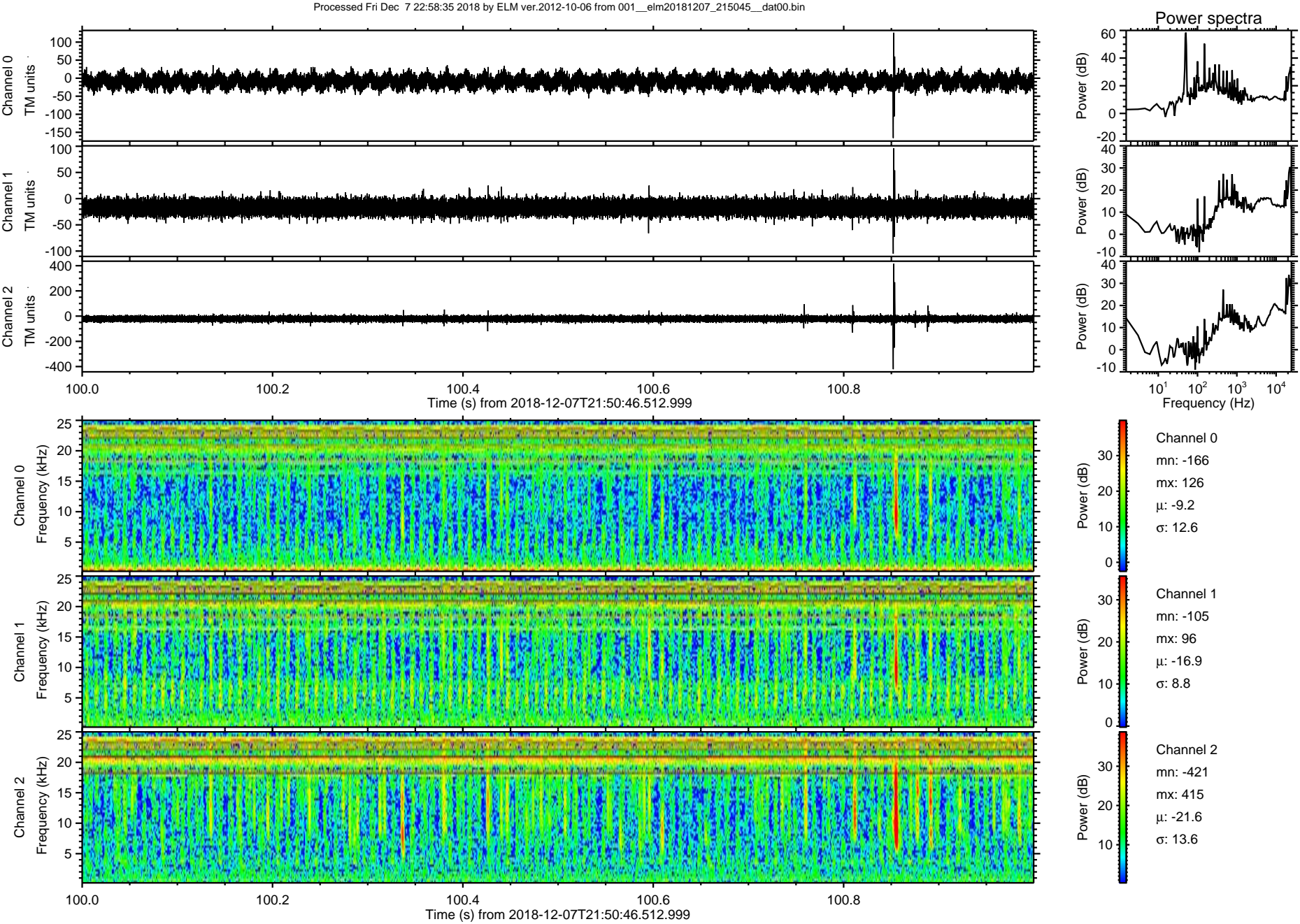


Processed Fri Dec 7 22:58:34 2018 by ELM ver.2012-10-06 from 001\_\_elm20181207\_215045\_\_dat00.bin





ELMAVAN 3D WAVEFORMS (Measured data sampled at 50 kHz) 51000 packets of 144 samples from 2018-12-07T21:50:46.512.999. Part 101/147





Processed Fri Dec 7 22:58:35 2018 by ELM ver.2012-10-06 from 001\_\_elm20181207\_215045\_\_dat00.bin

