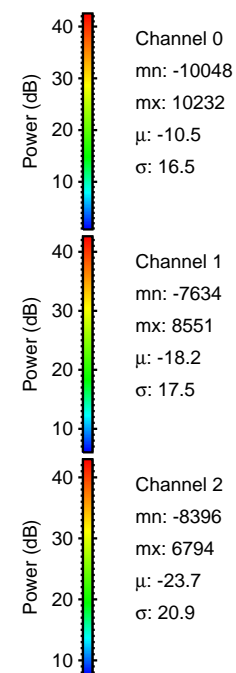
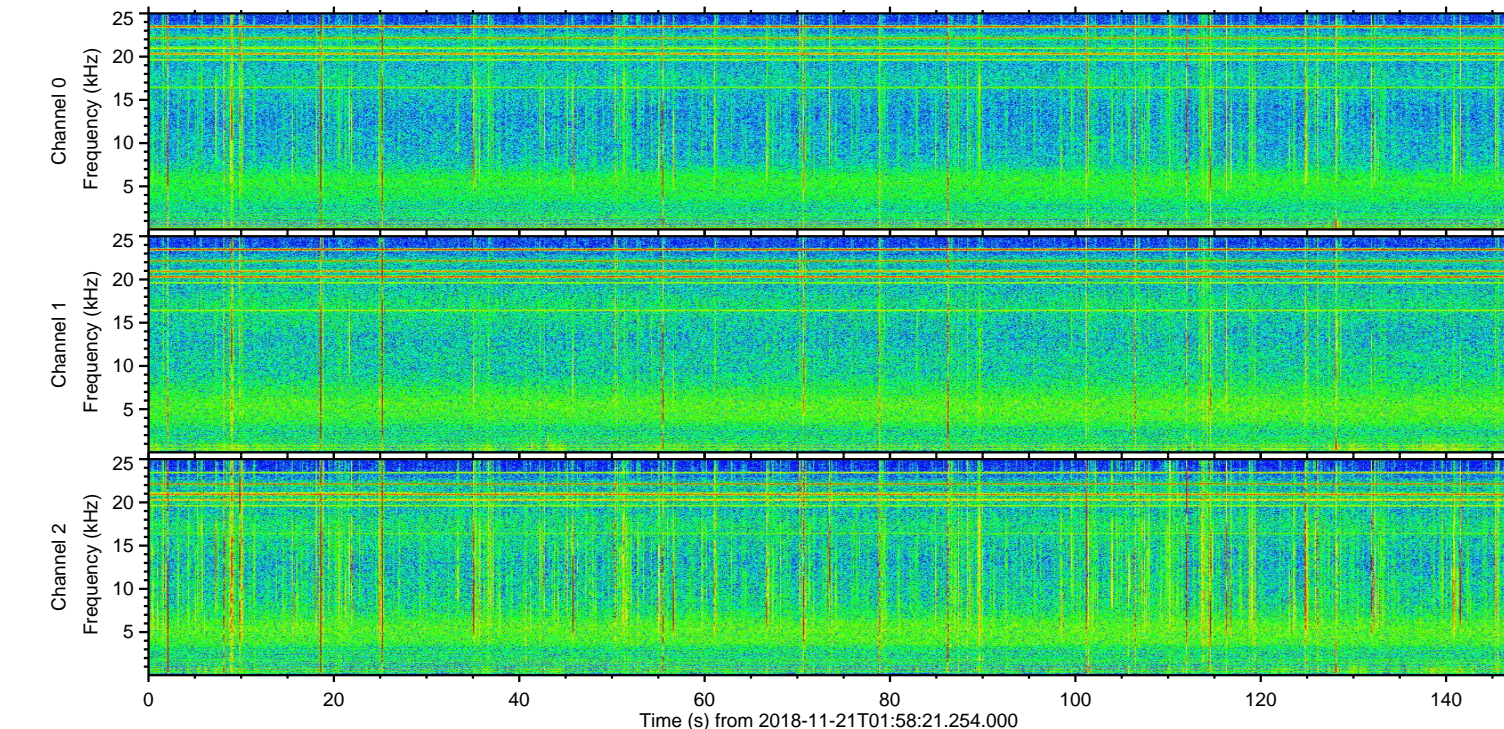
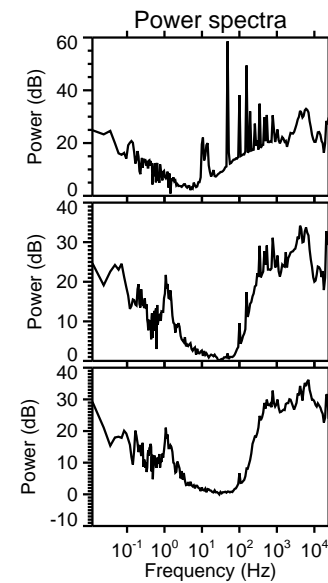
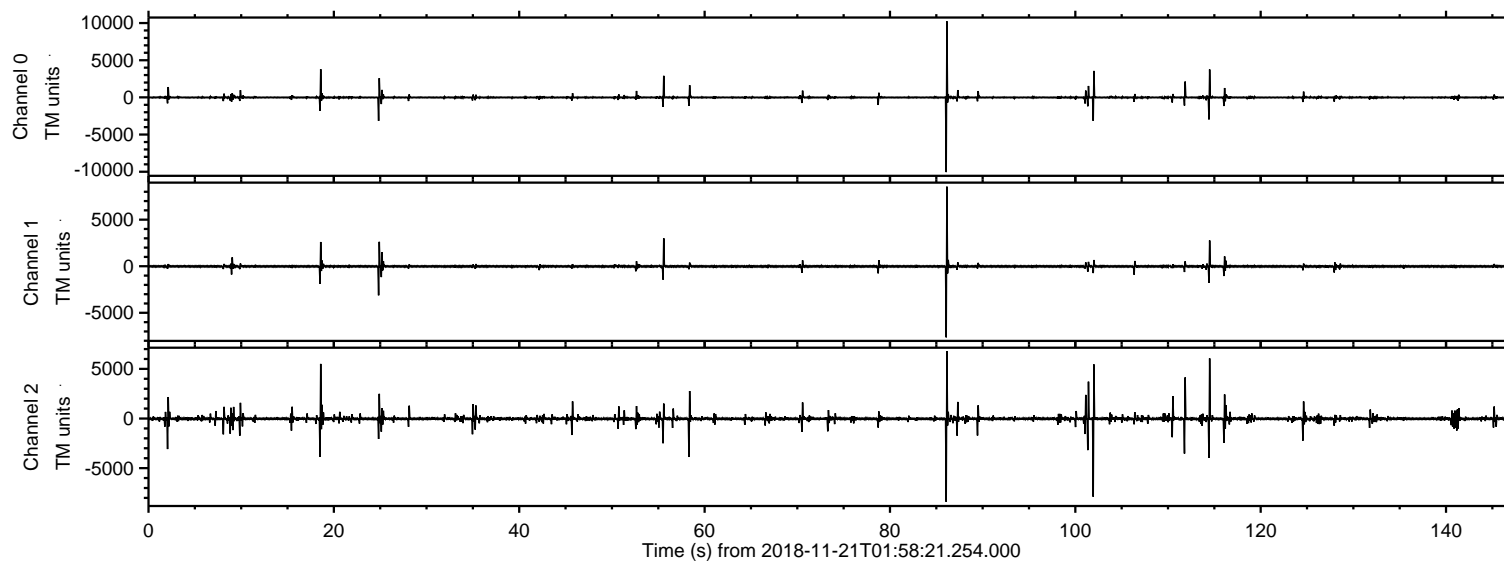


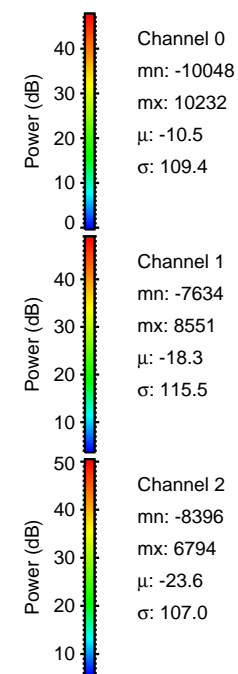
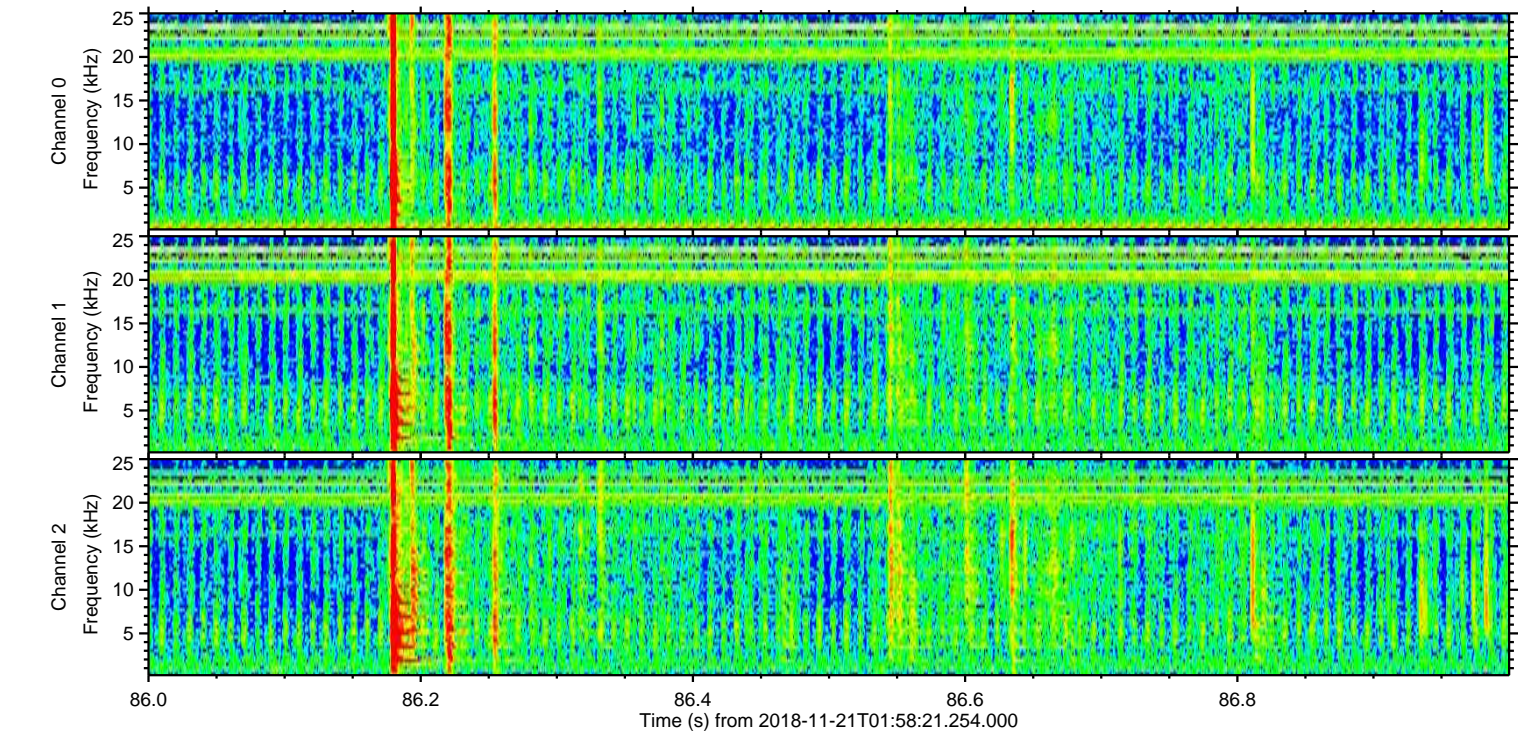
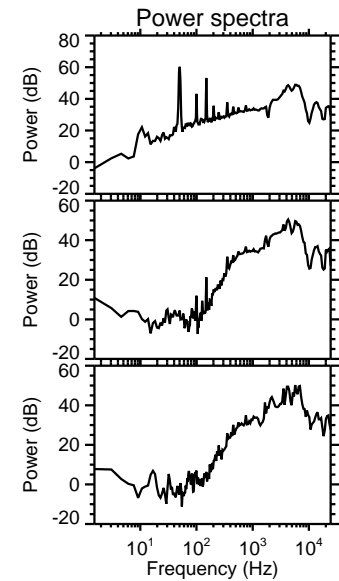
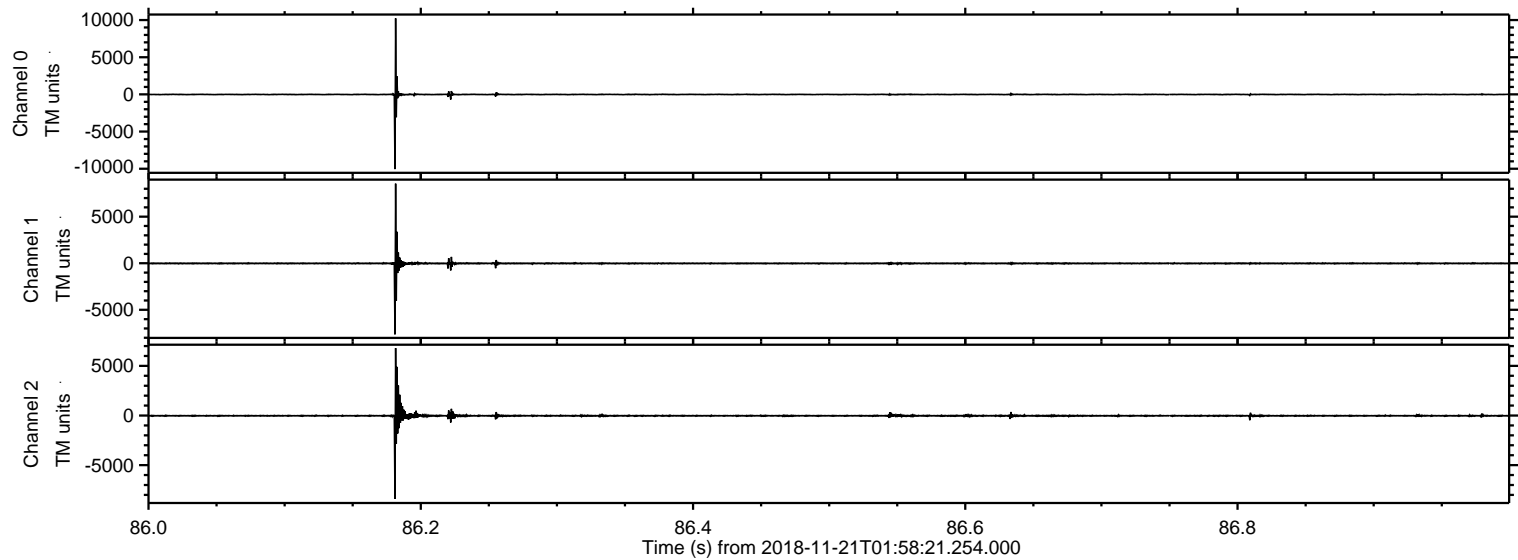
ELMAVAN 3D WAVEFORMS (Measured data sampled at 50 kHz) 51000 packets of 144 samples from 2018-11-21T01:58:21.254.000.

Processed Wed Nov 21 03:06:36 2018 by ELM ver.2012-10-06 from 001__elm20181121_015820__dat00.bin



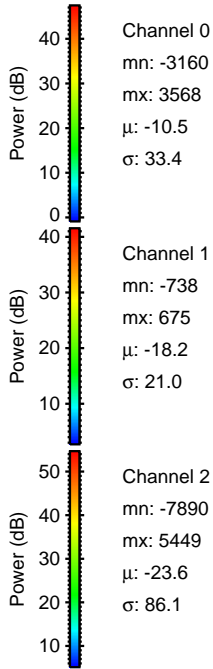
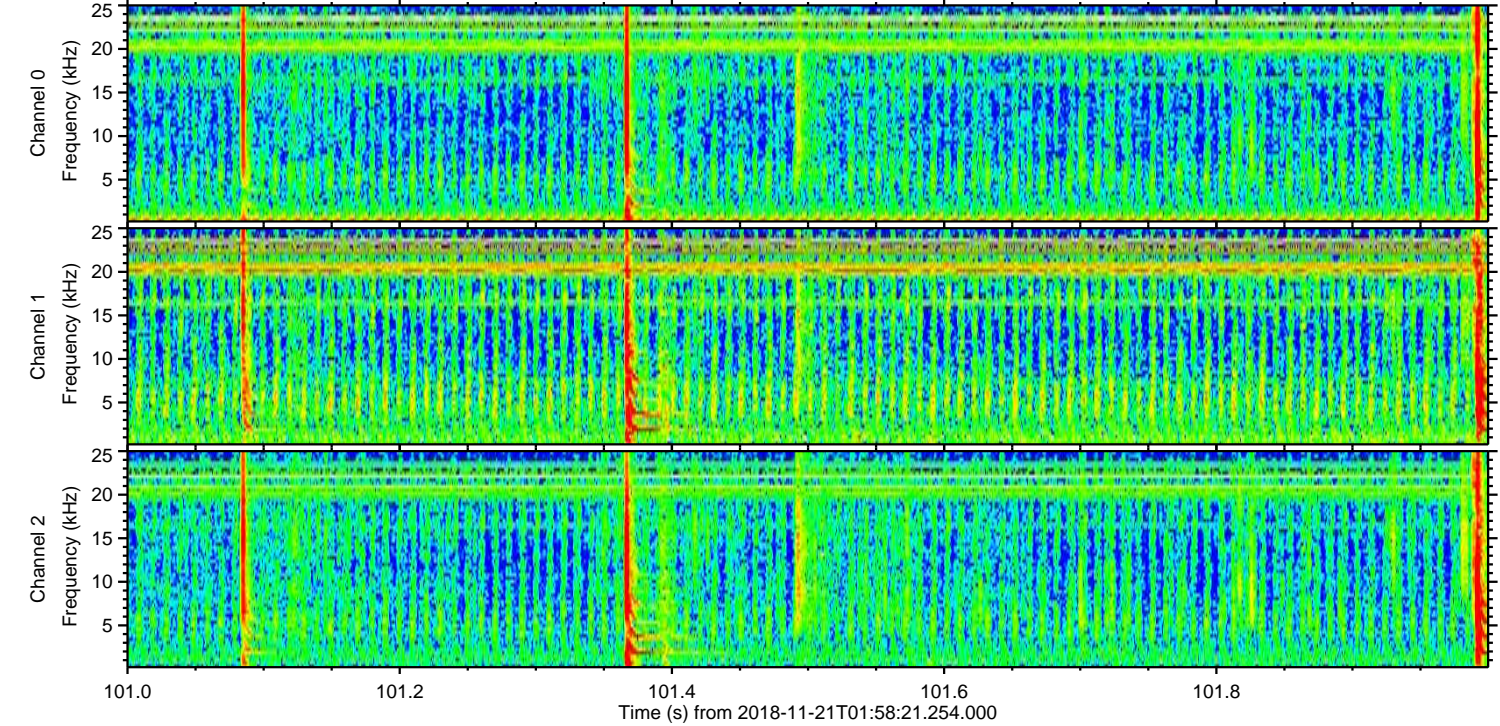
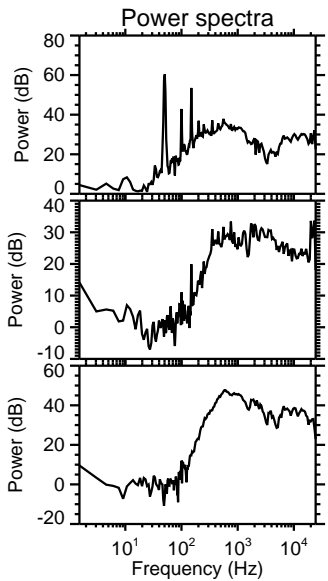
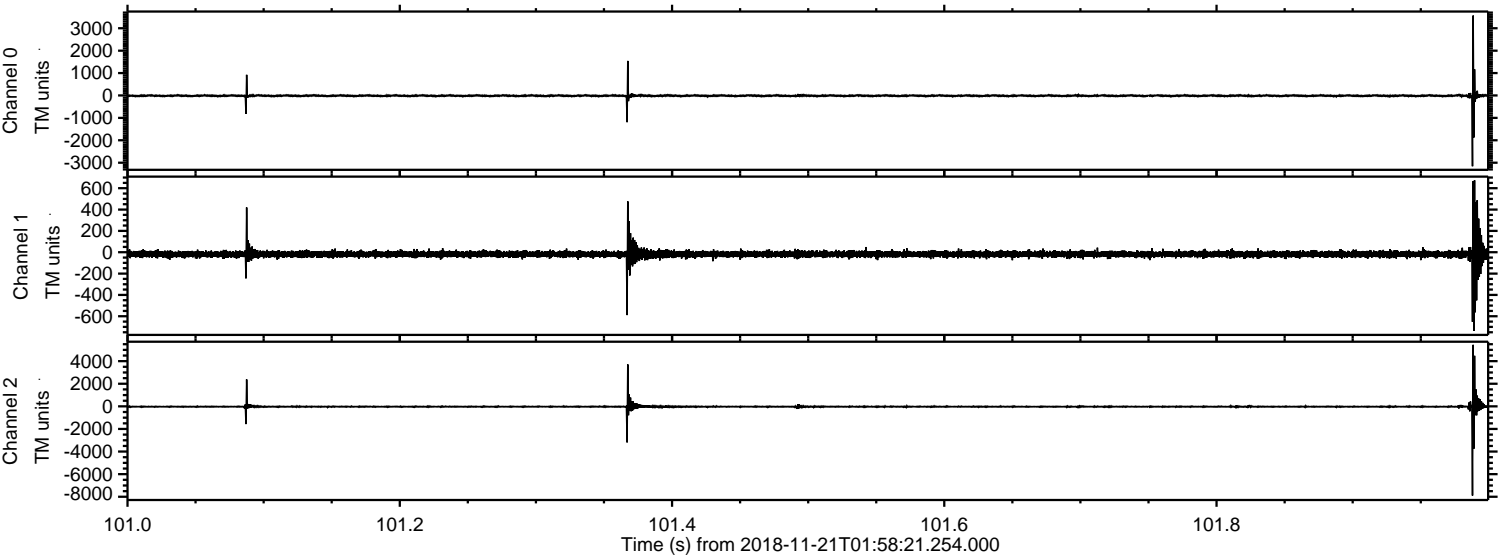
ELMAVAN 3D WAVEFORMS (Measured data sampled at 50 kHz) 51000 packets of 144 samples from 2018-11-21T01:58:21.254.000. Part 87/147

Processed Wed Nov 21 03:06:42 2018 by ELM ver.2012-10-06 from 001__elm20181121_015820__dat00.bin



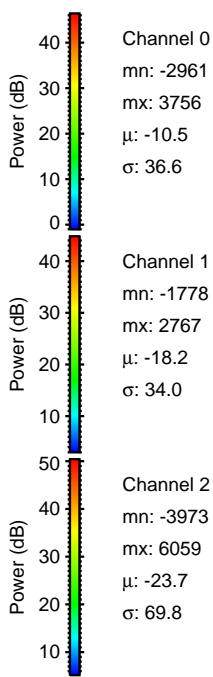
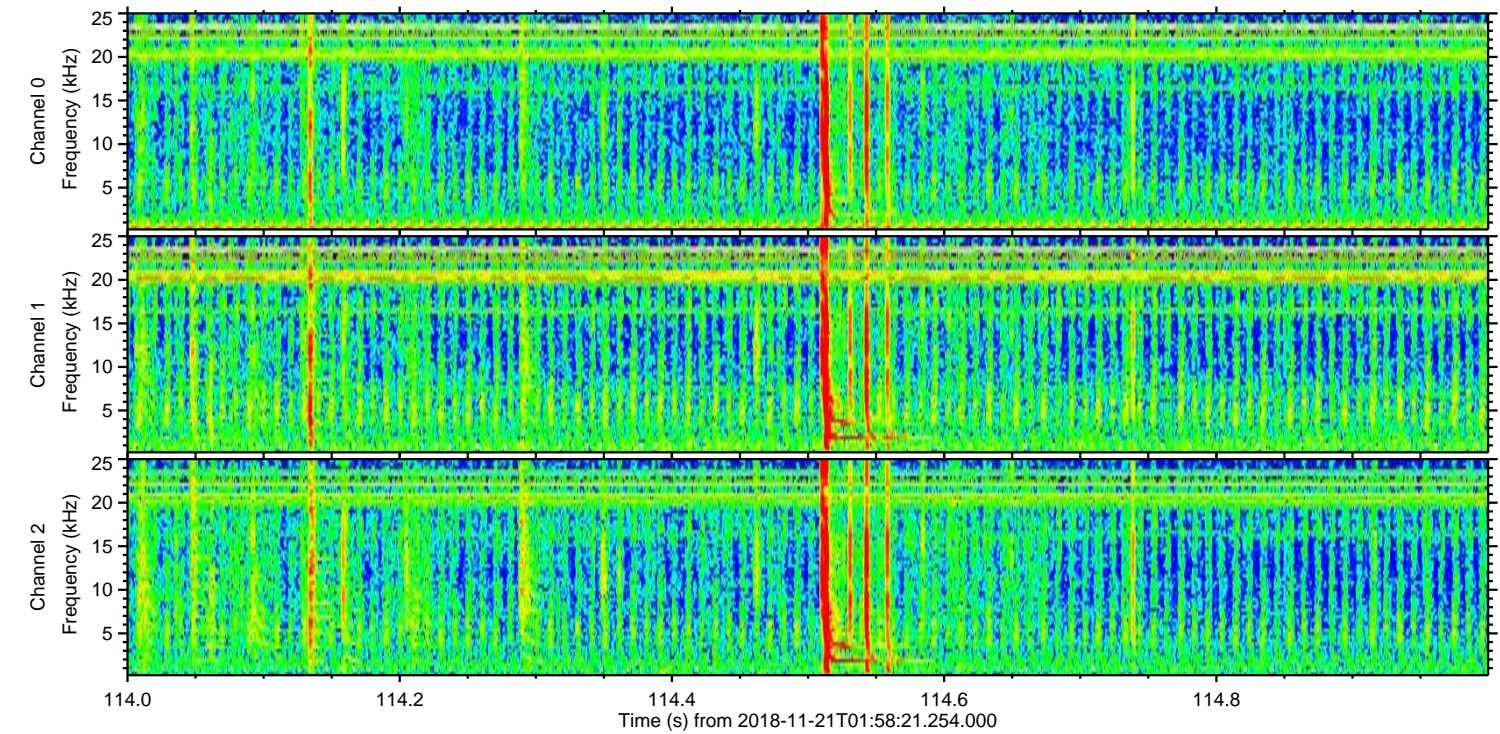
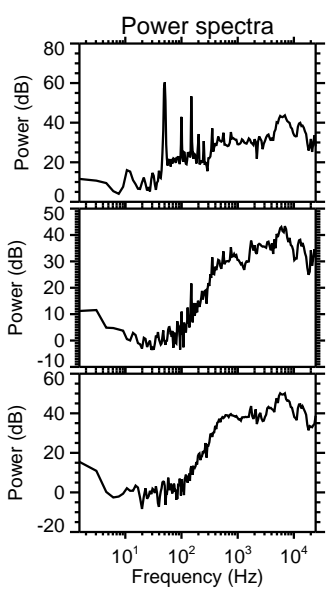
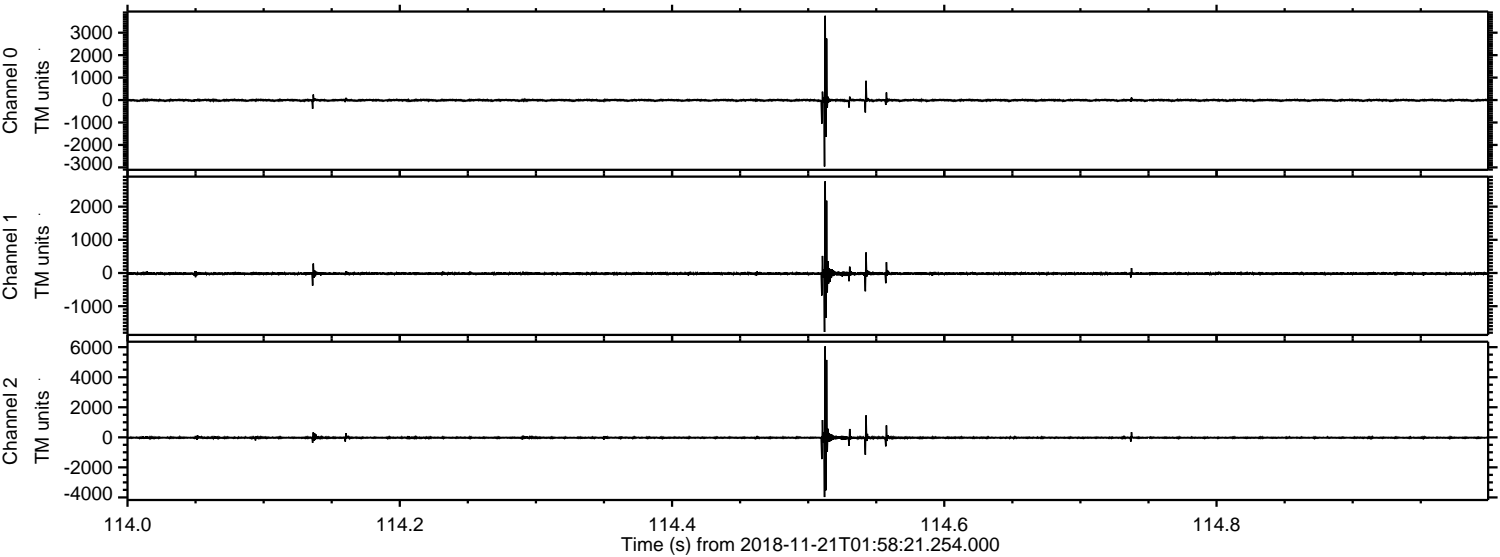
ELMAVAN 3D WAVEFORMS (Measured data sampled at 50 kHz) 51000 packets of 144 samples from 2018-11-21T01:58:21.254.000. Part 102/147

Processed Wed Nov 21 03:06:43 2018 by ELM ver.2012-10-06 from 001__elm20181121_015820__dat00.bin

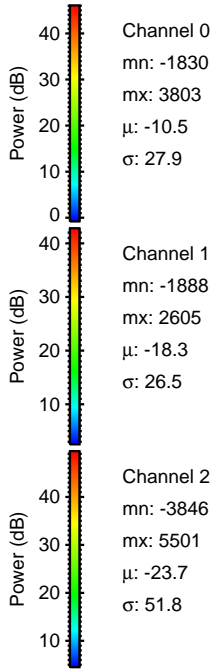
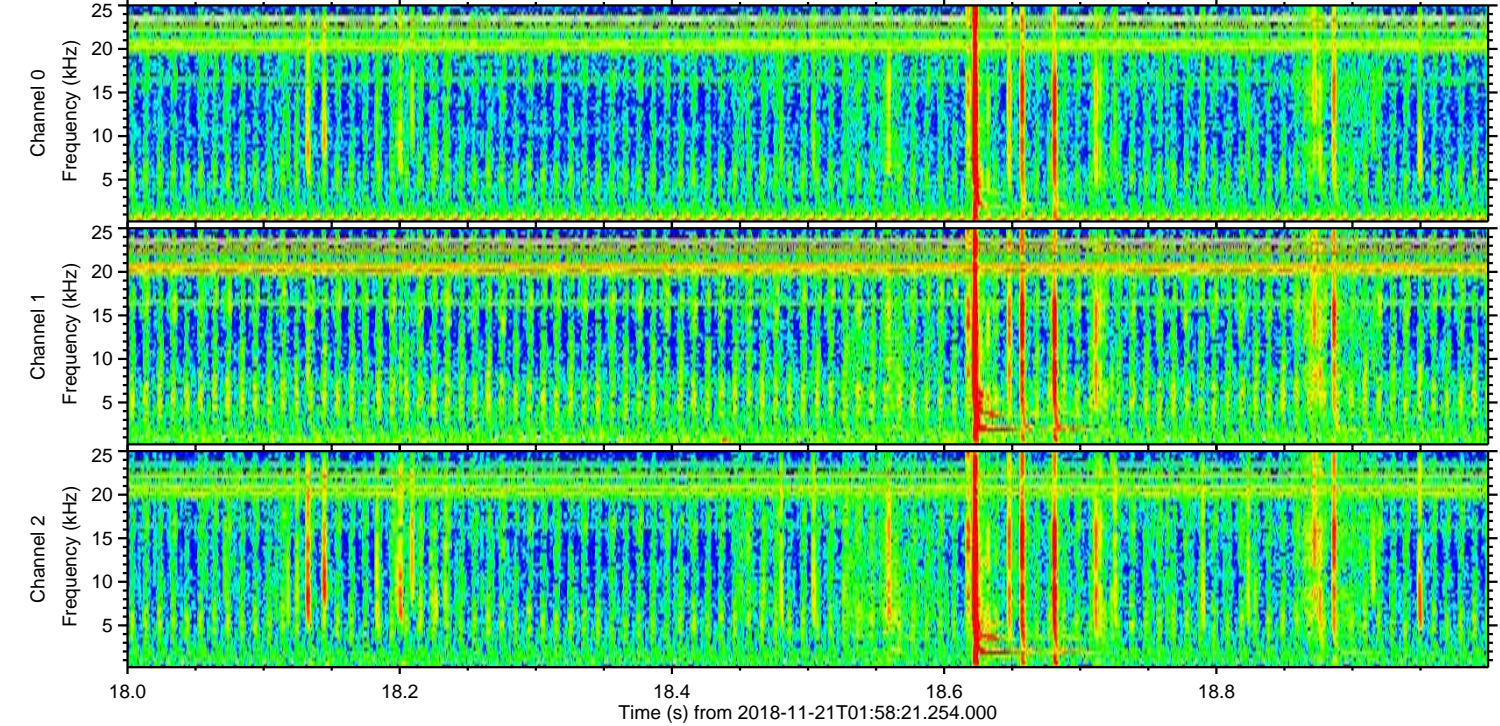
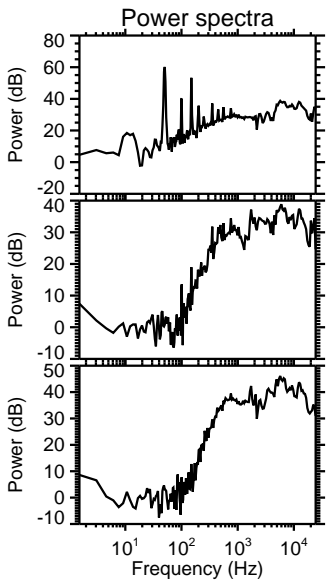
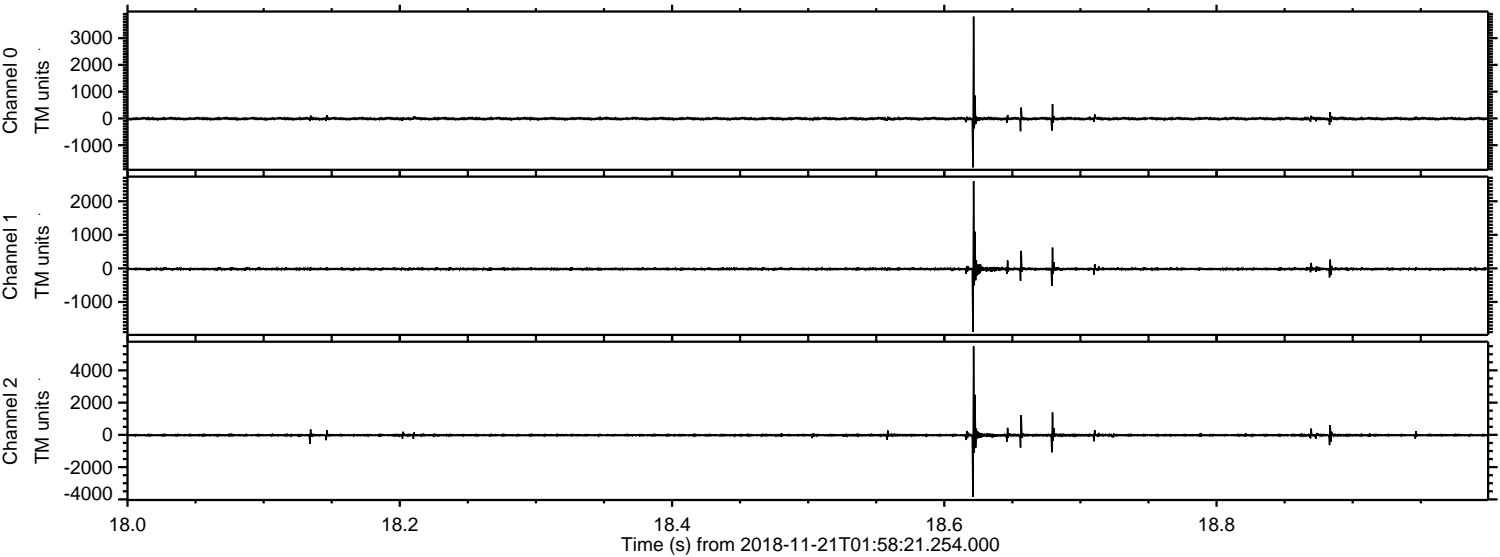


ELMAVAN 3D WAVEFORMS (Measured data sampled at 50 kHz) 51000 packets of 144 samples from 2018-11-21T01:58:21.254.000. Part 115/147

Processed Wed Nov 21 03:06:44 2018 by ELM ver.2012-10-06 from 001__elm20181121_015820__dat00.bin

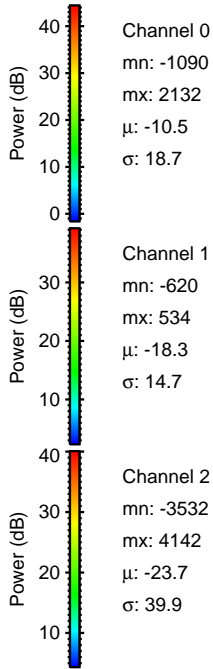
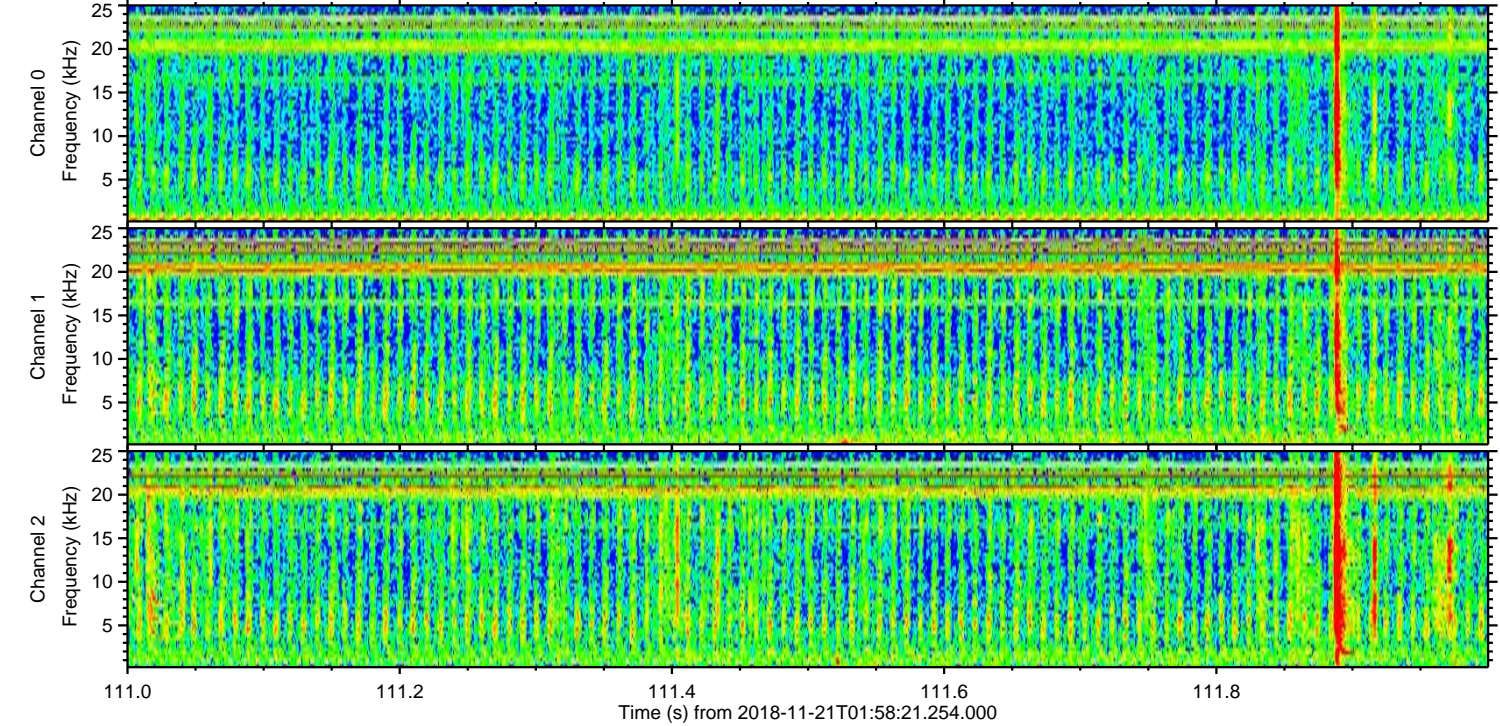
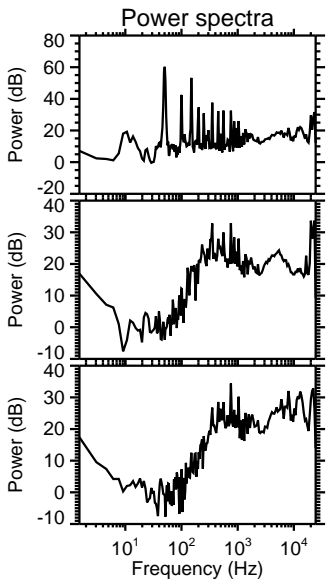
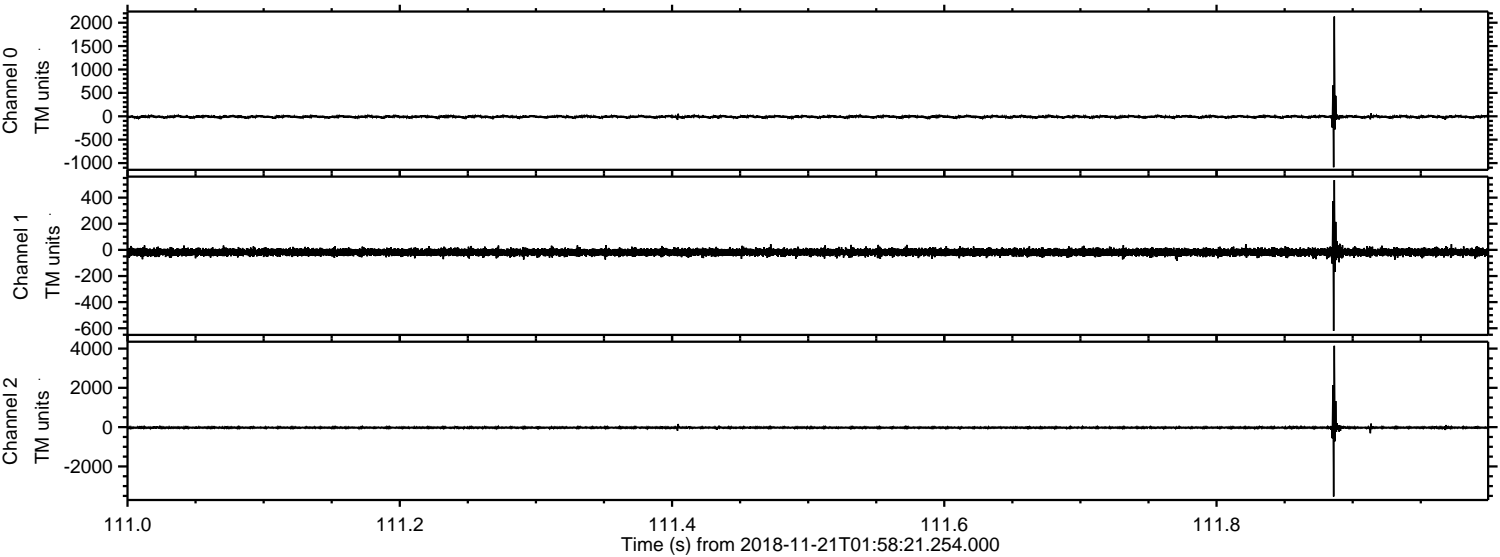


Processed Wed Nov 21 03:06:44 2018 by ELM ver.2012-10-06 from 001__elm20181121_015820__dat00.bin

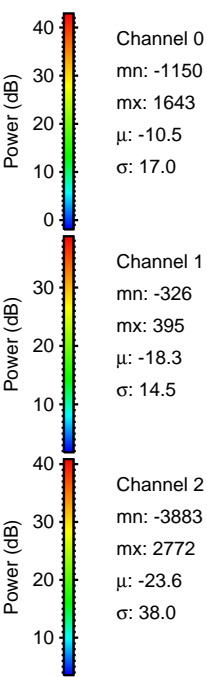
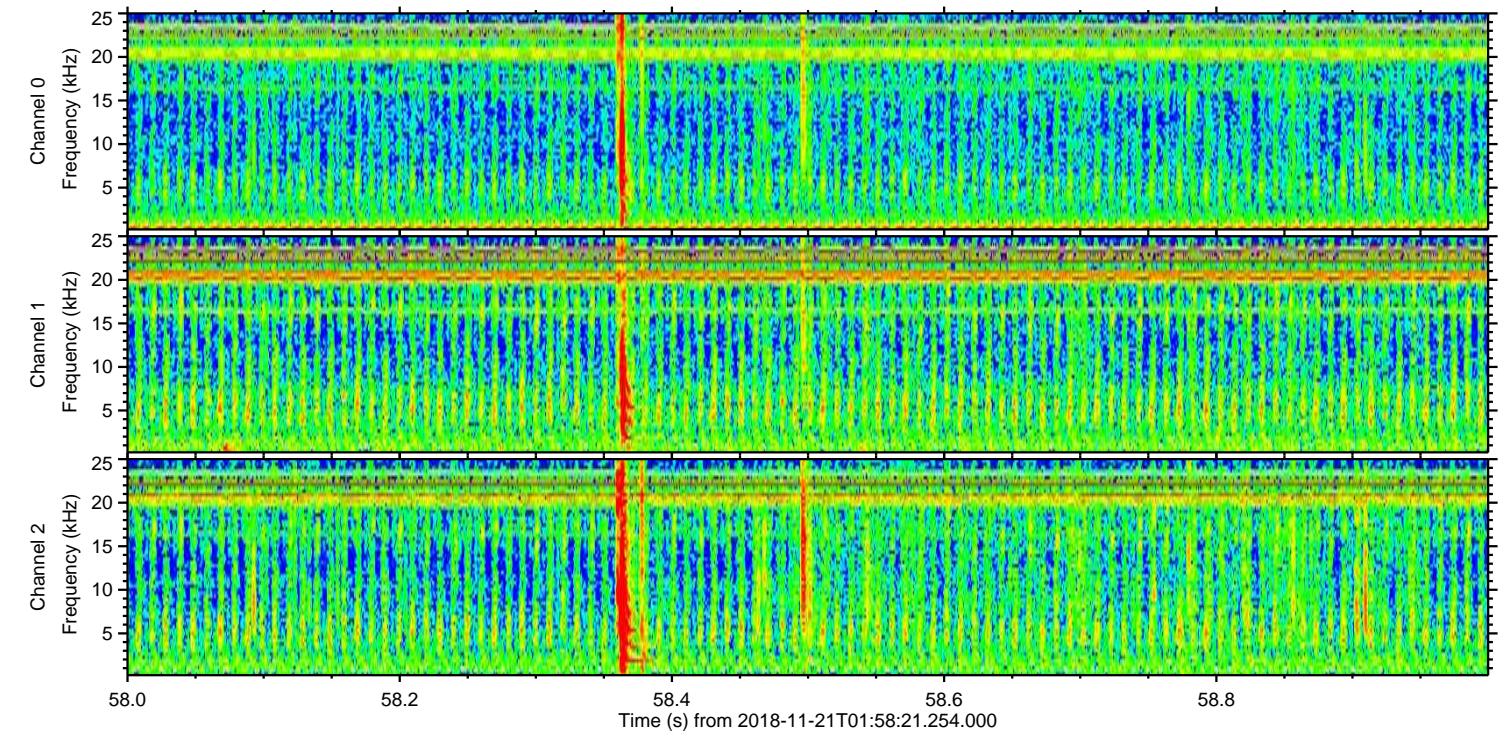
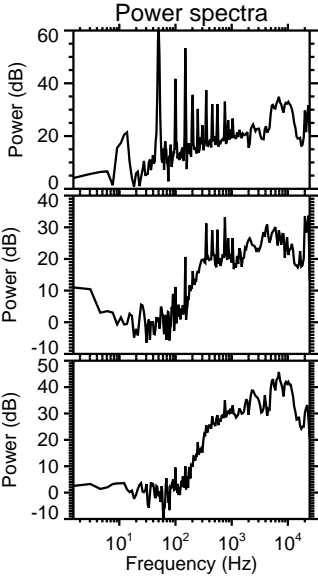
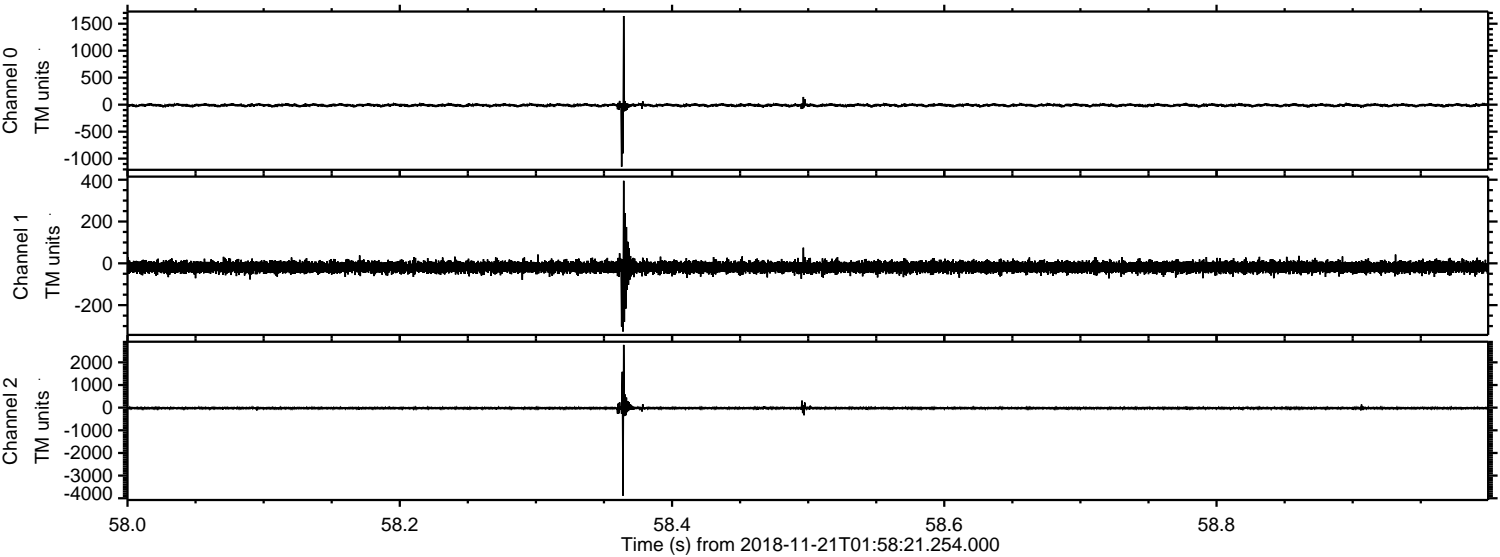


ELMAVAN 3D WAVEFORMS (Measured data sampled at 50 kHz) 51000 packets of 144 samples from 2018-11-21T01:58:21.254.000. Part 112/147

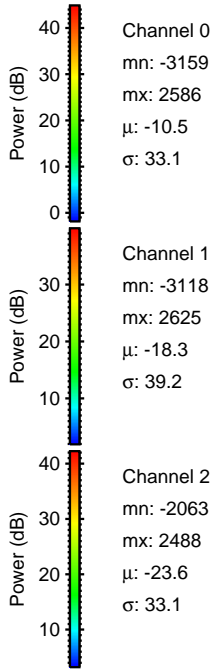
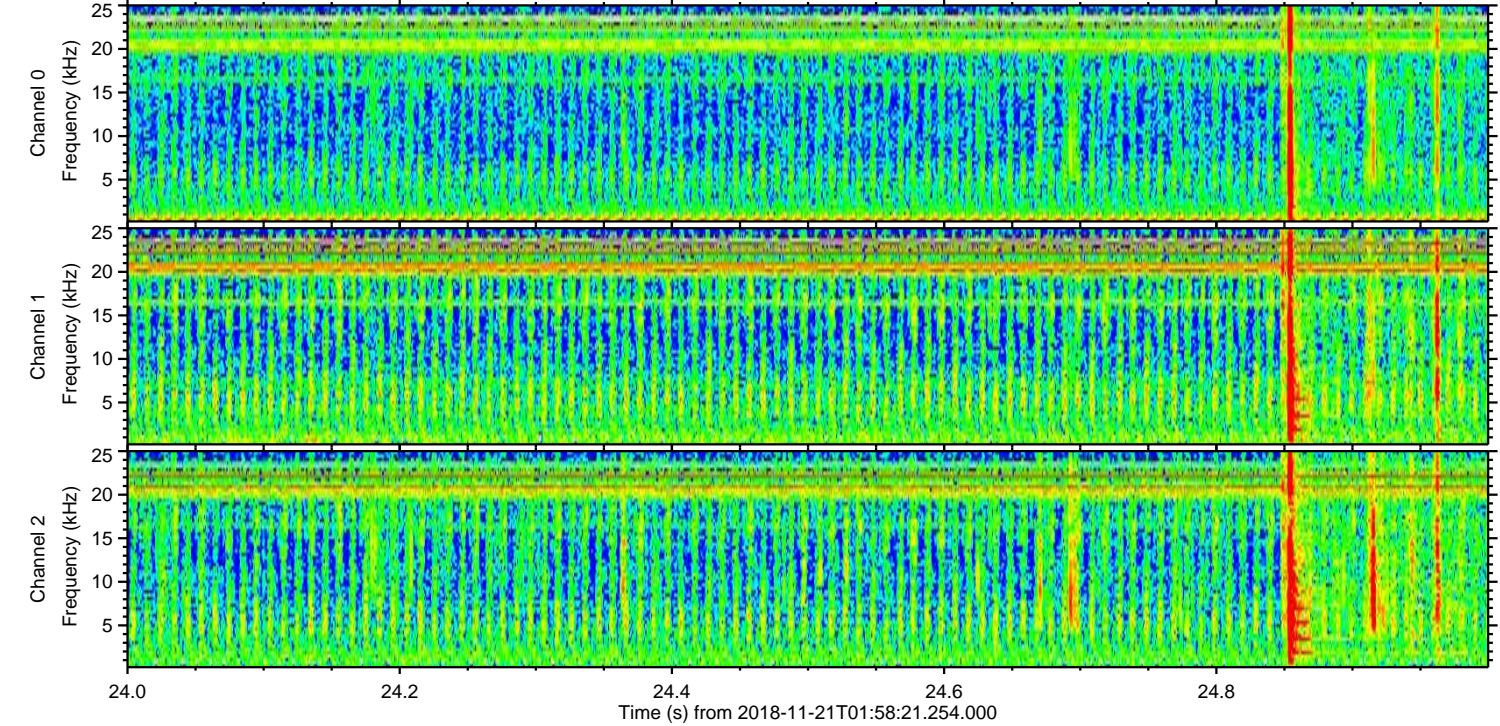
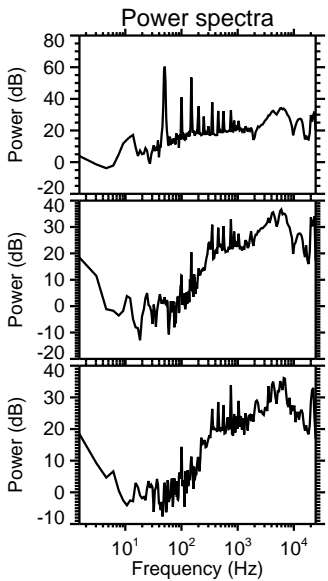
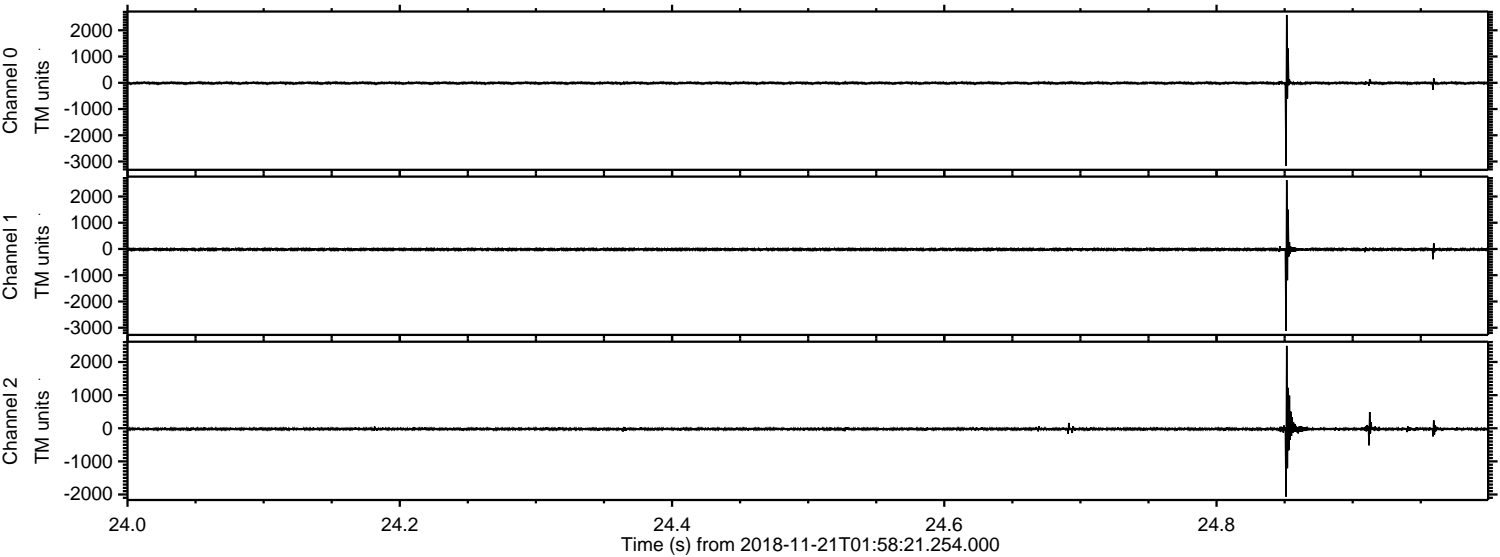
Processed Wed Nov 21 03:06:45 2018 by ELM ver.2012-10-06 from 001__elm20181121_015820__dat00.bin



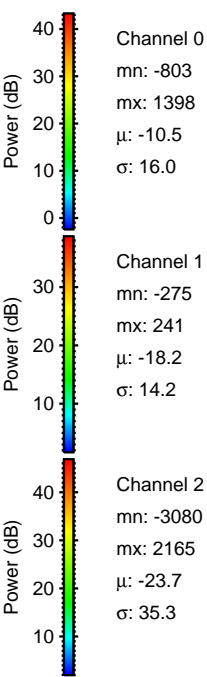
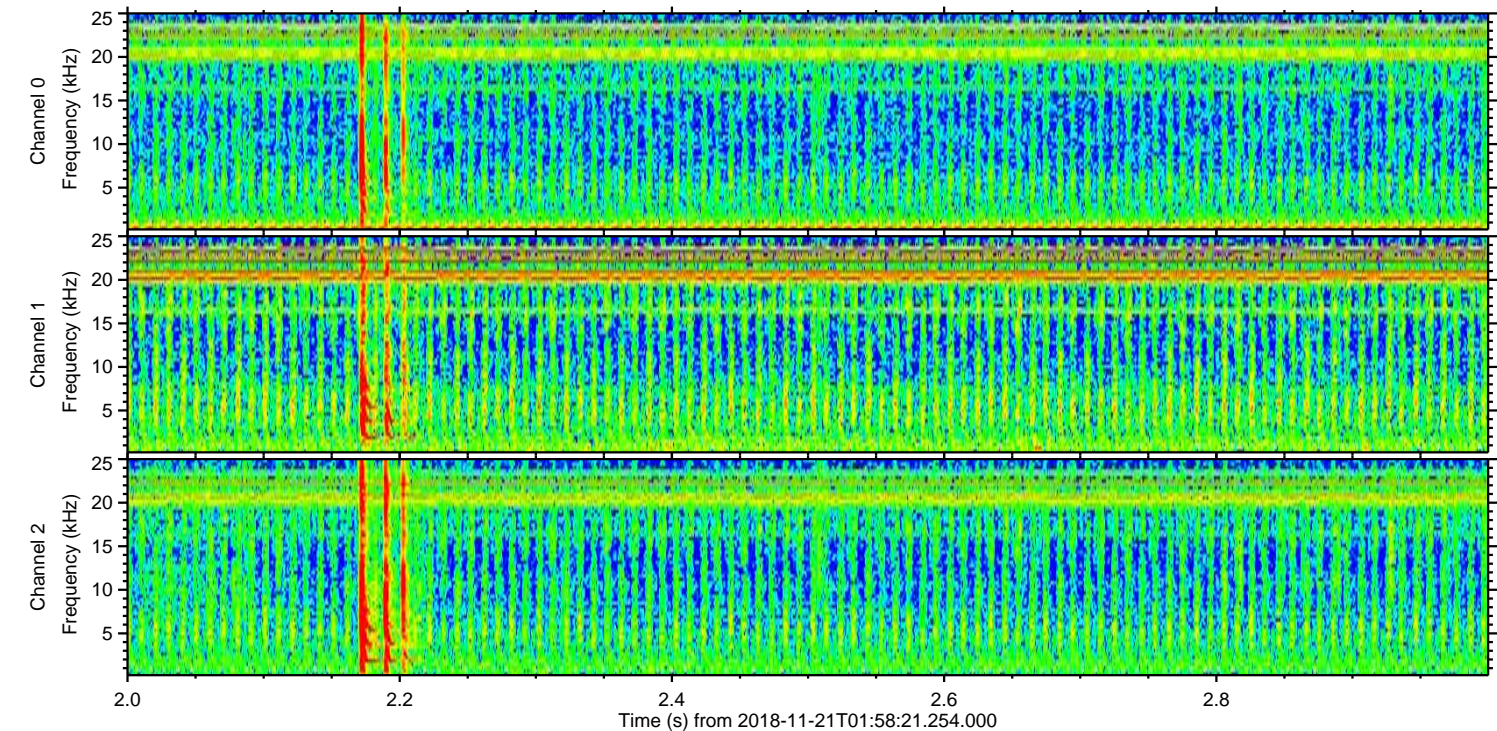
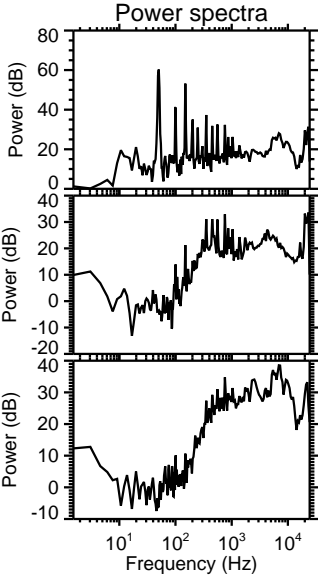
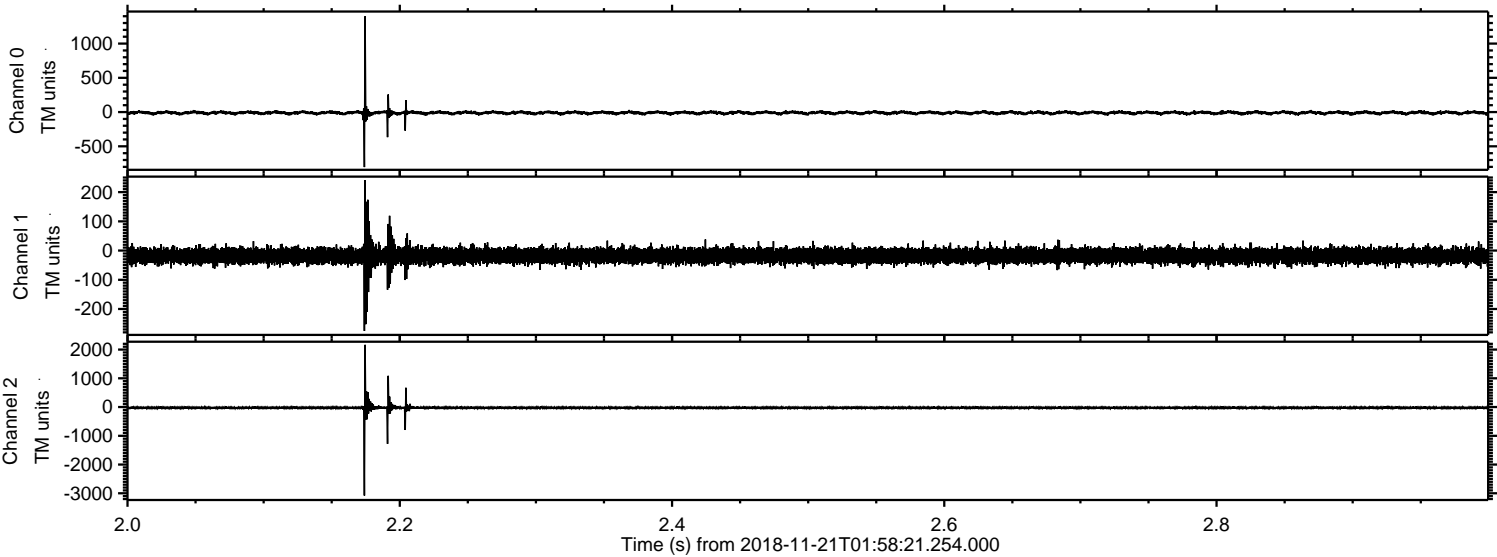
Processed Wed Nov 21 03:06:46 2018 by ELM ver.2012-10-06 from 001__elm20181121_015820__dat00.bin



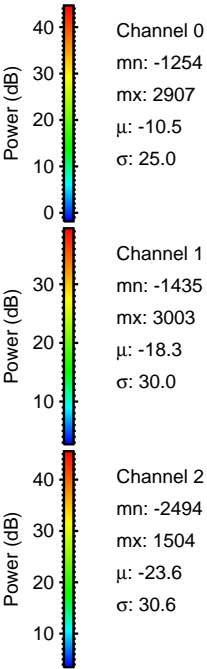
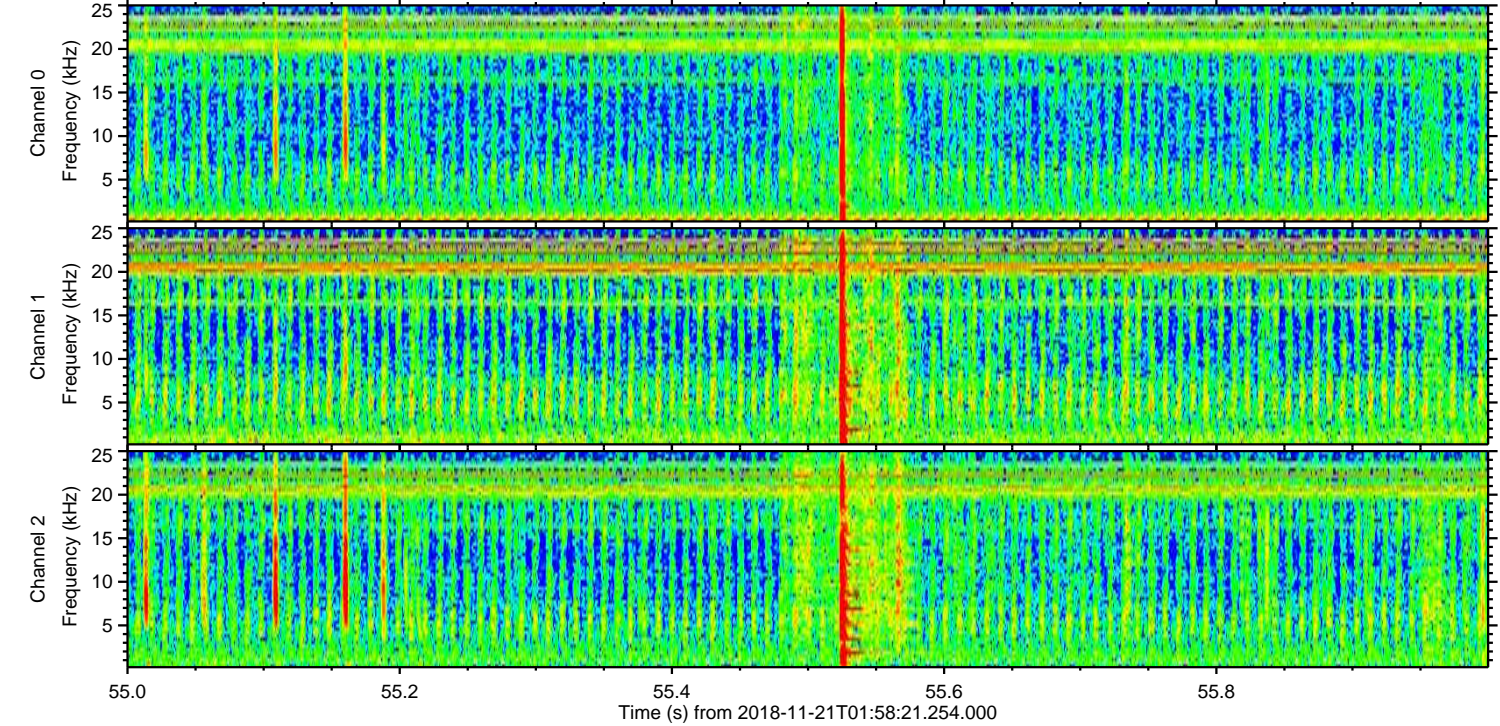
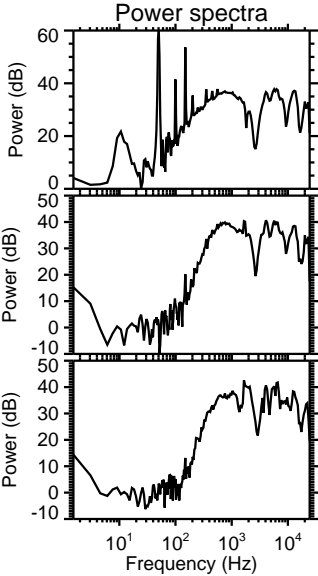
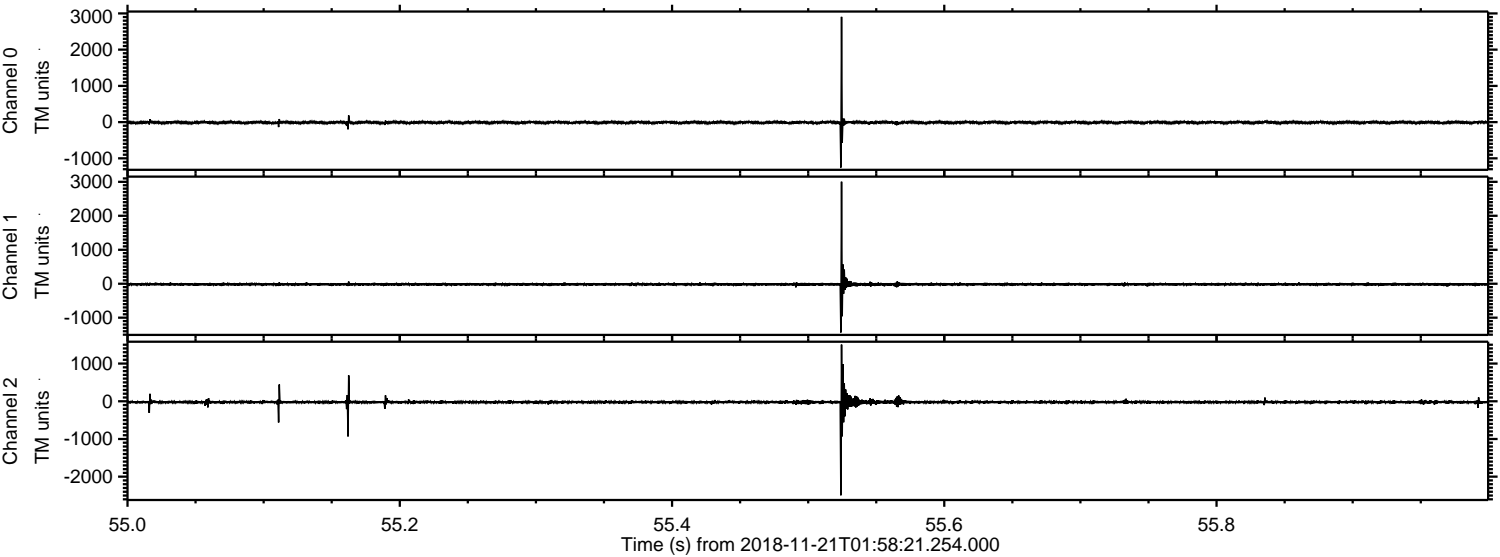
Processed Wed Nov 21 03:06:46 2018 by ELM ver.2012-10-06 from 001__elm20181121_015820__dat00.bin



Processed Wed Nov 21 03:06:47 2018 by ELM ver.2012-10-06 from 001__elm20181121_015820__dat00.bin



Processed Wed Nov 21 03:06:47 2018 by ELM ver.2012-10-06 from 001__elm20181121_015820__dat00.bin



Channel 0
mn: -1254
mx: 2907
 μ : -10.5
 σ : 25.0

Channel 1
mn: -1435
mx: 3003
 μ : -18.3
 σ : 30.0

Channel 2
mn: -2494
mx: 1504
 μ : -23.6
 σ : 30.6

