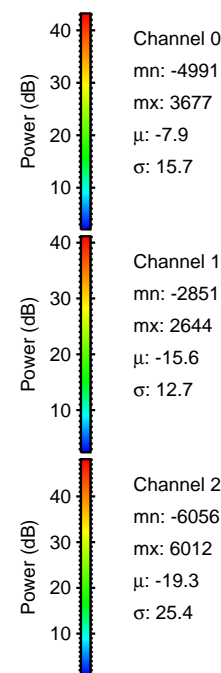
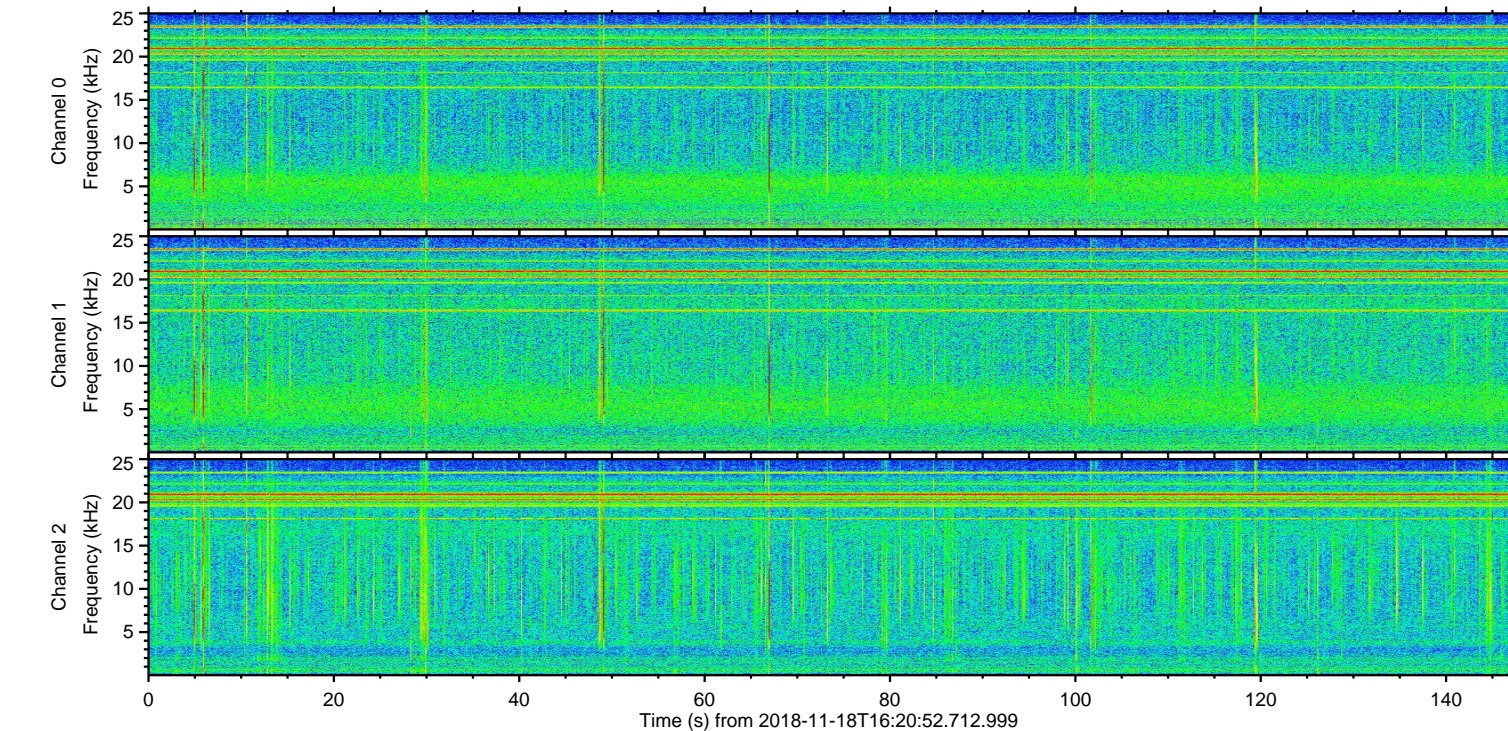
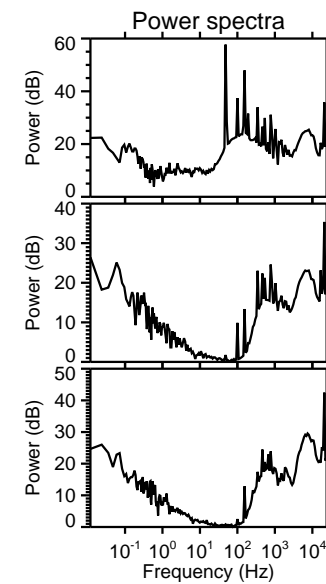
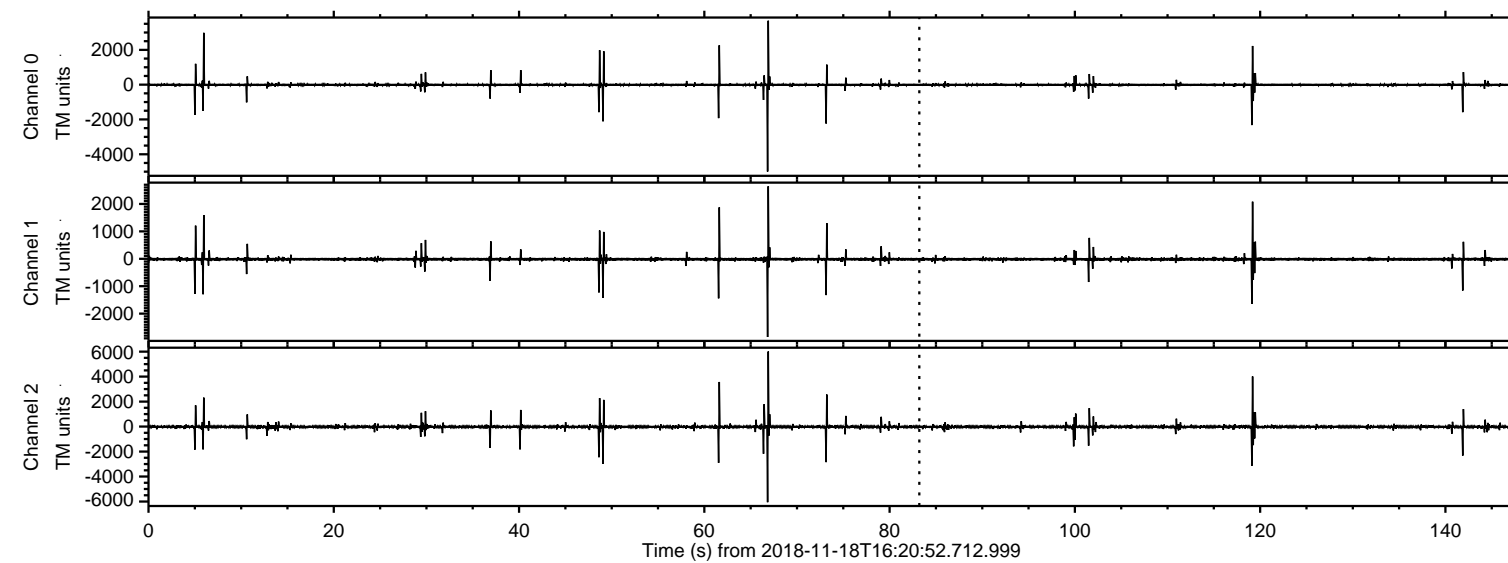
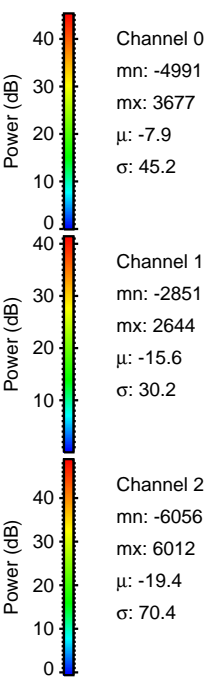
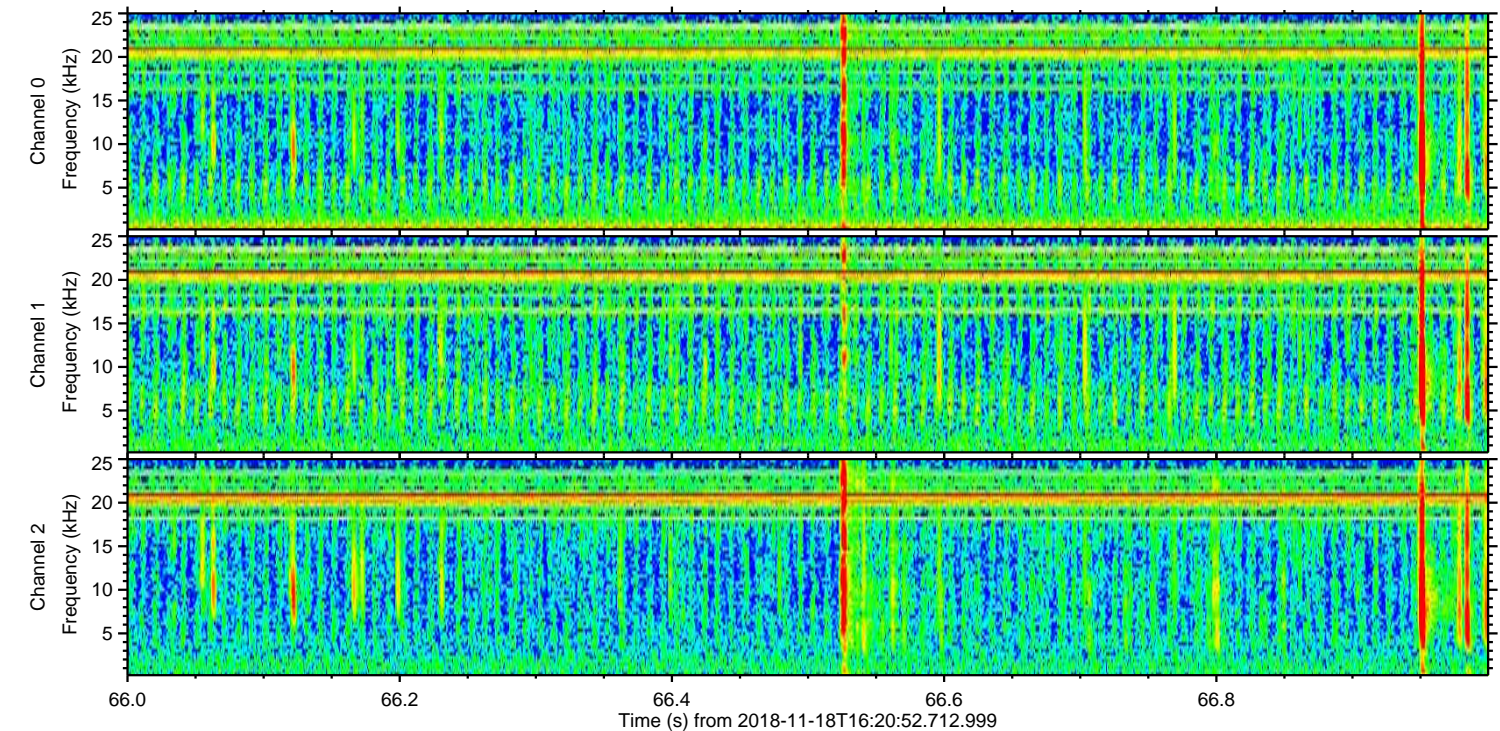
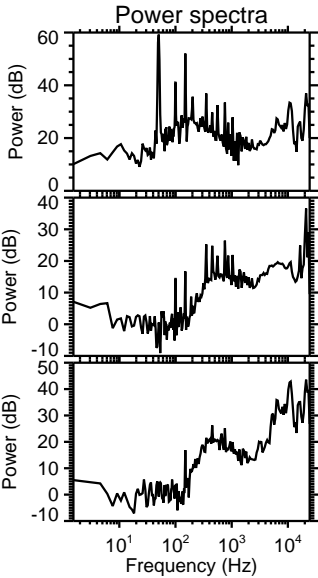
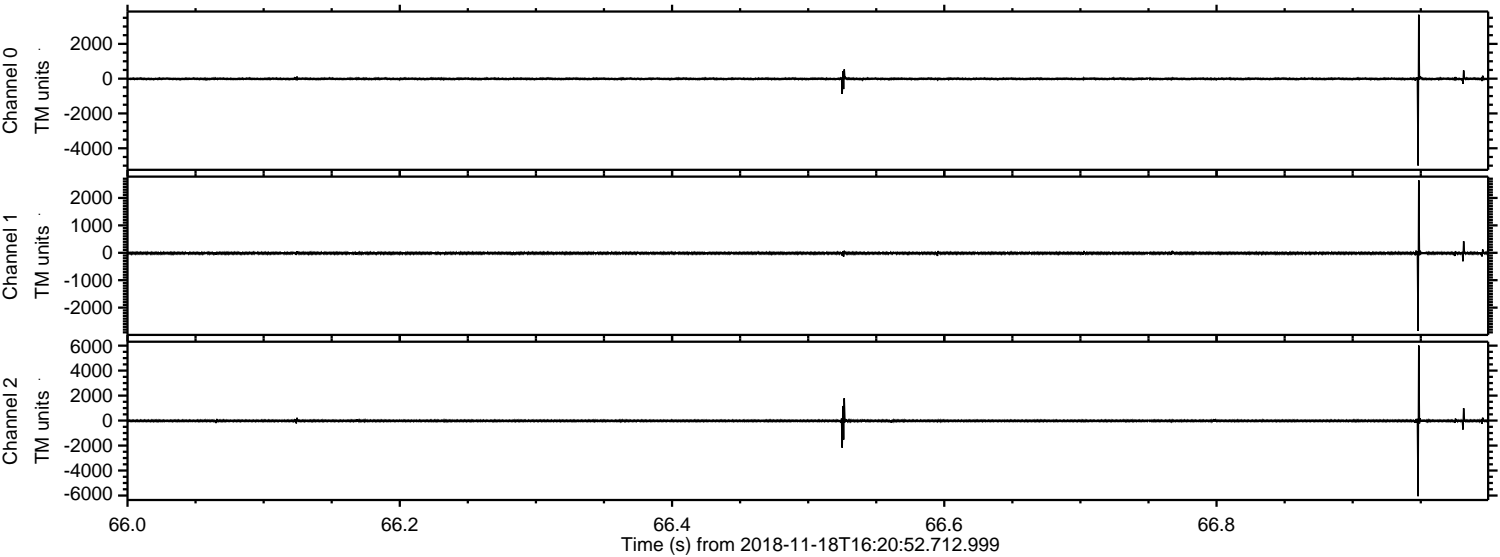


ELMAVAN 3D WAVEFORMS (Measured data sampled at 50 kHz) 50999 packets of 144 samples from 2018-11-18T16:20:52.712.999.

Processed Sun Nov 18 17:29:15 2018 by ELM ver.2012-10-06 from 001__elm20181118_162051__dat00.bin

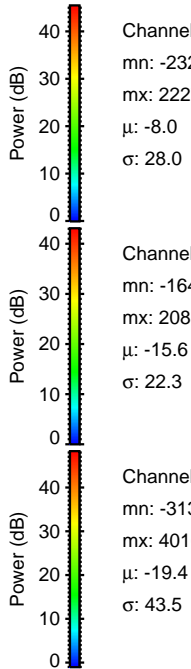
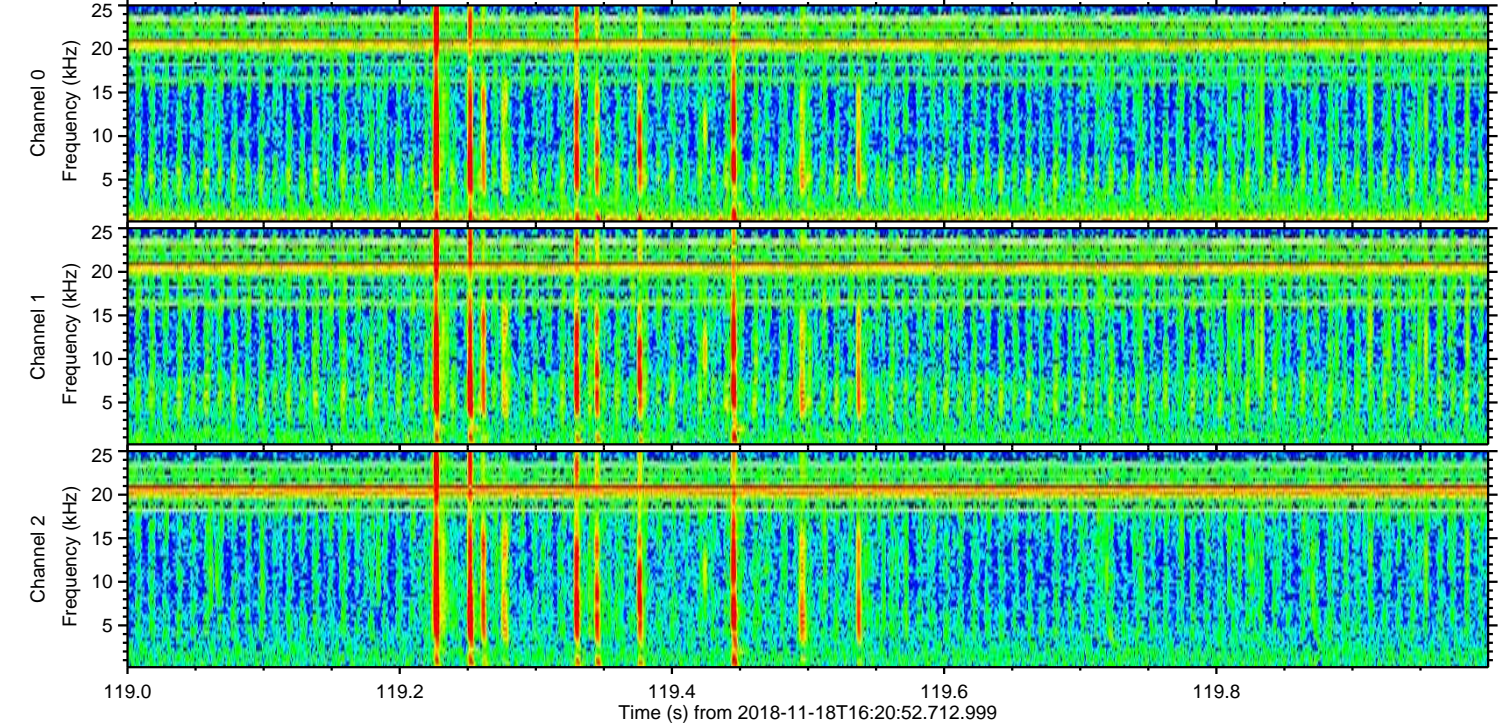
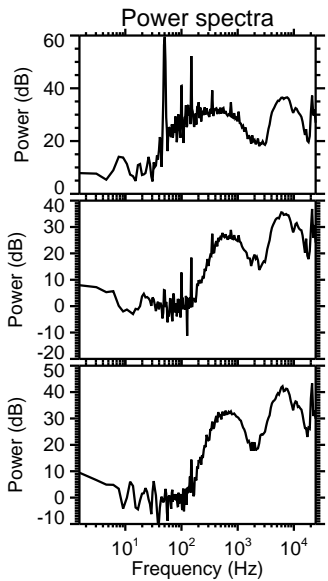
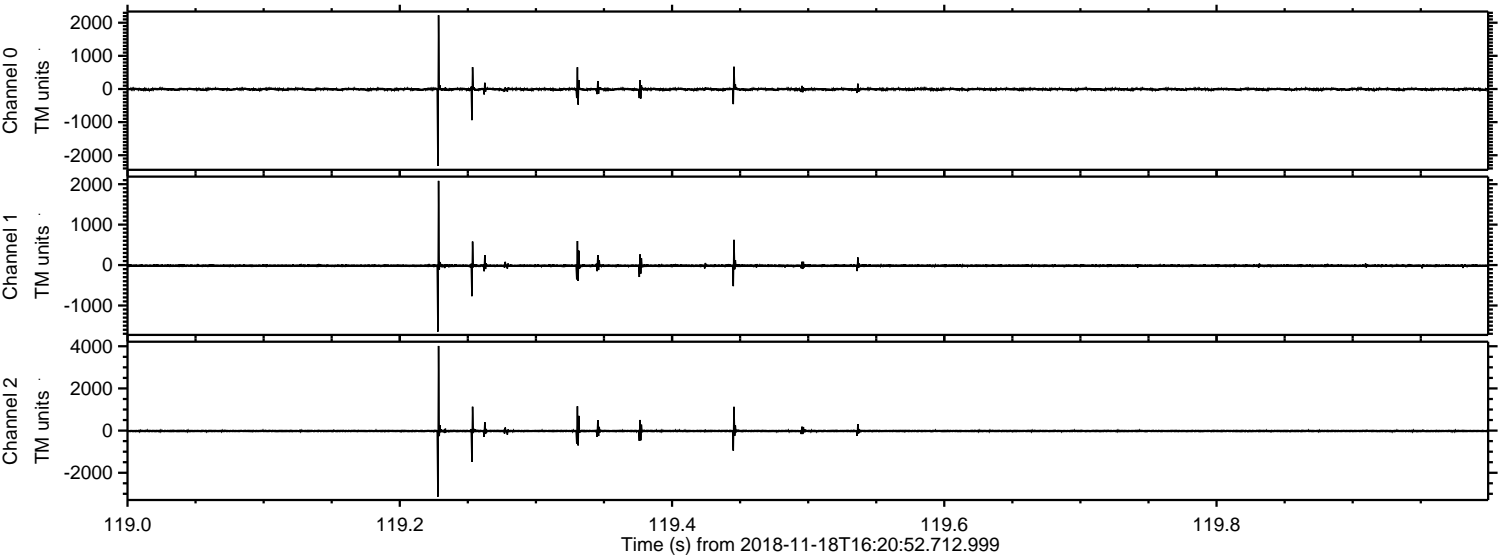


Processed Sun Nov 18 17:29:23 2018 by ELM ver.2012-10-06 from 001__elm20181118_162051__dat00.bin

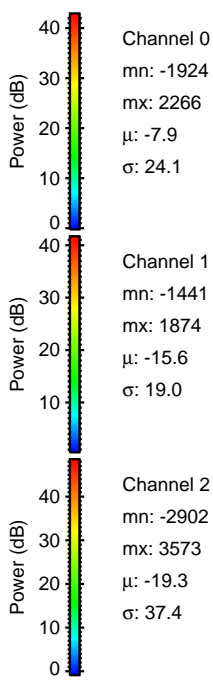
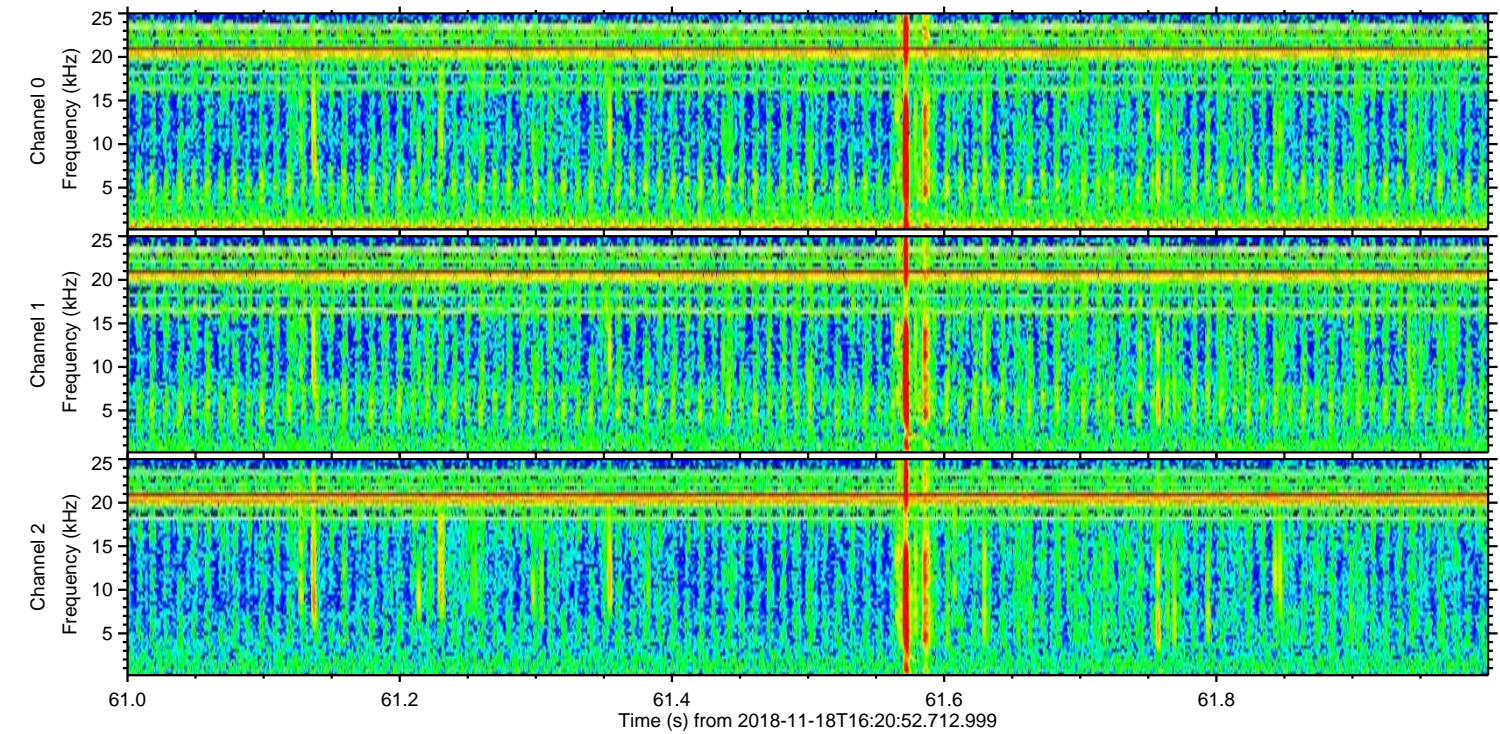
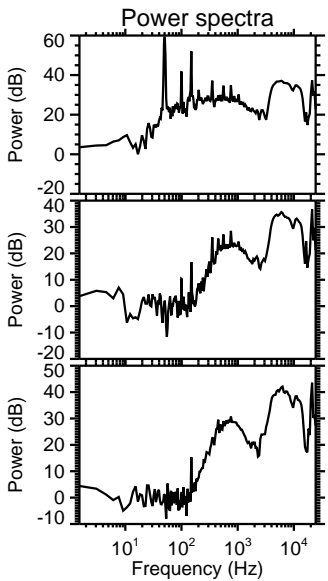
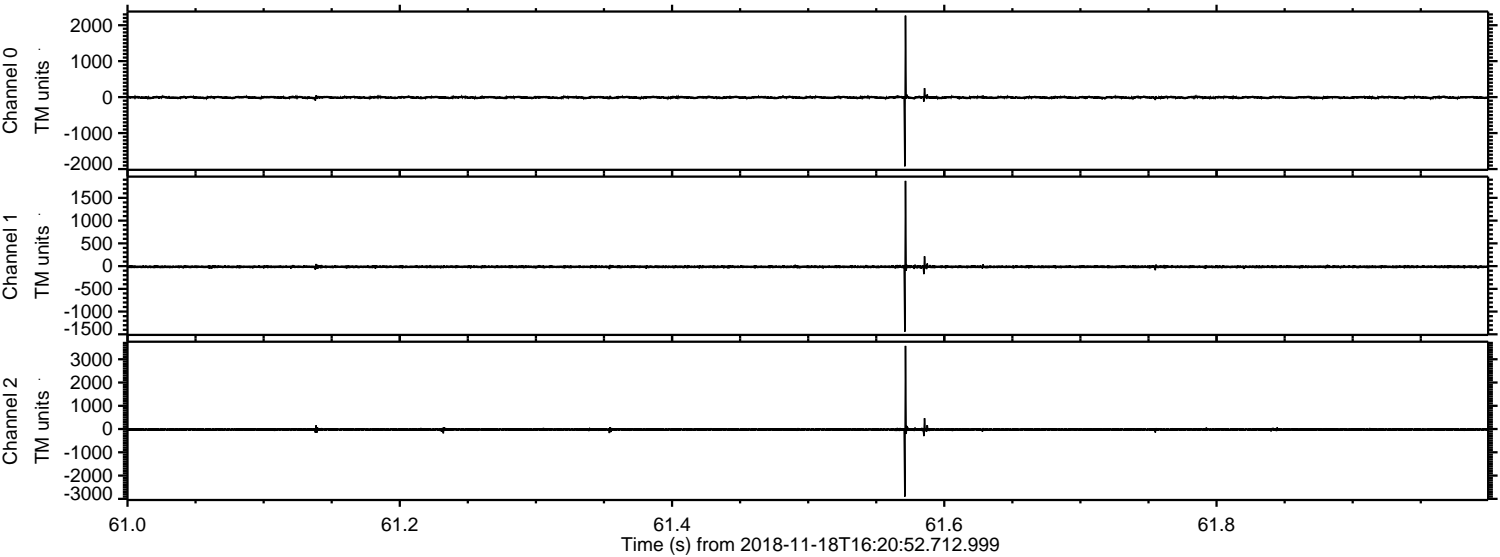


ELMAVAN 3D WAVEFORMS (Measured data sampled at 50 kHz) 50999 packets of 144 samples from 2018-11-18T16:20:52.712.999. Part 120/147

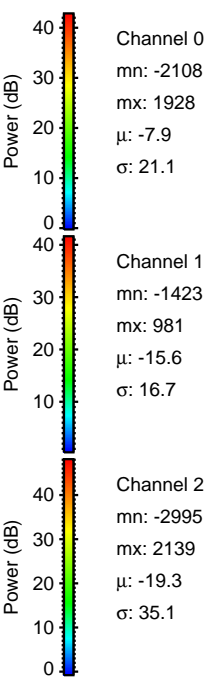
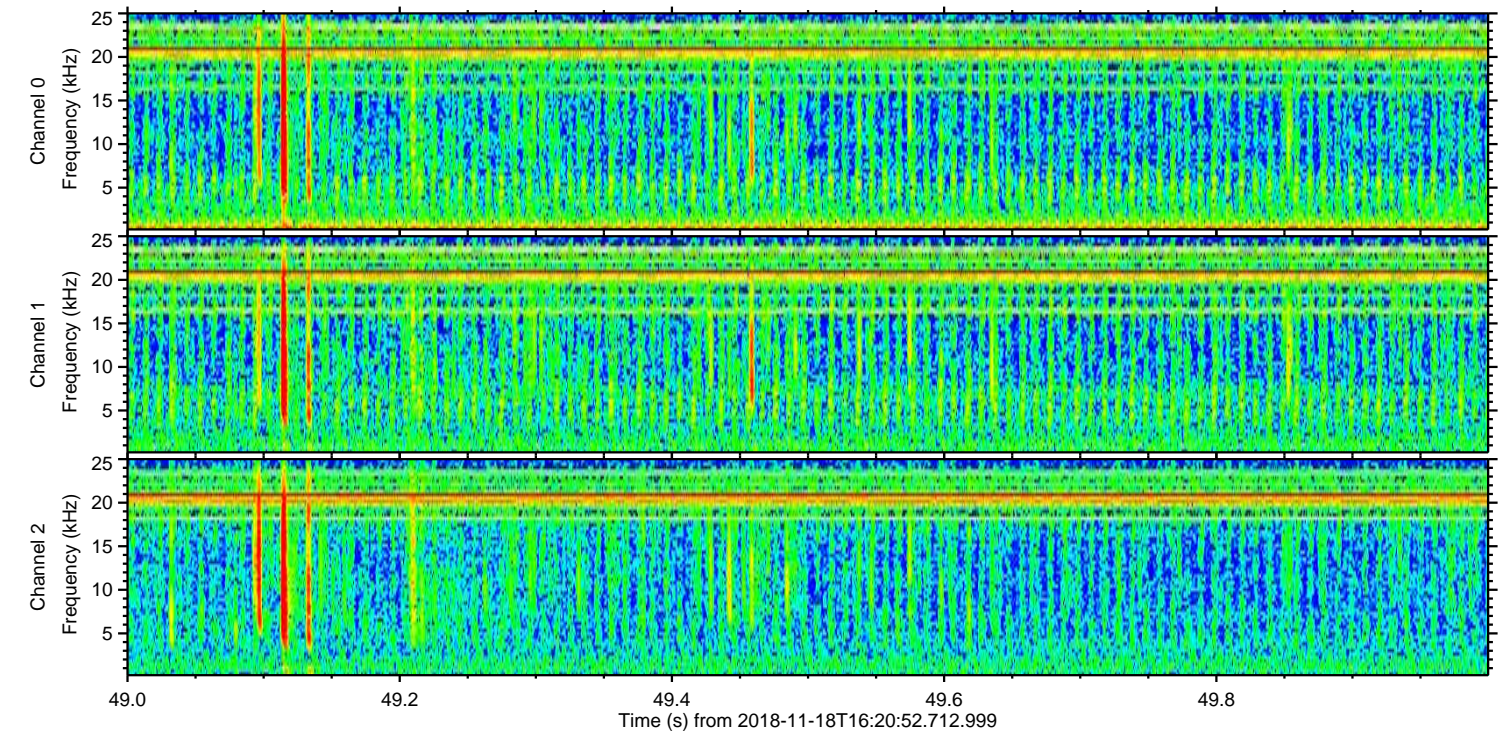
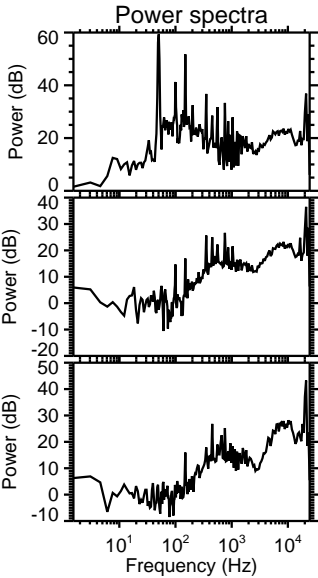
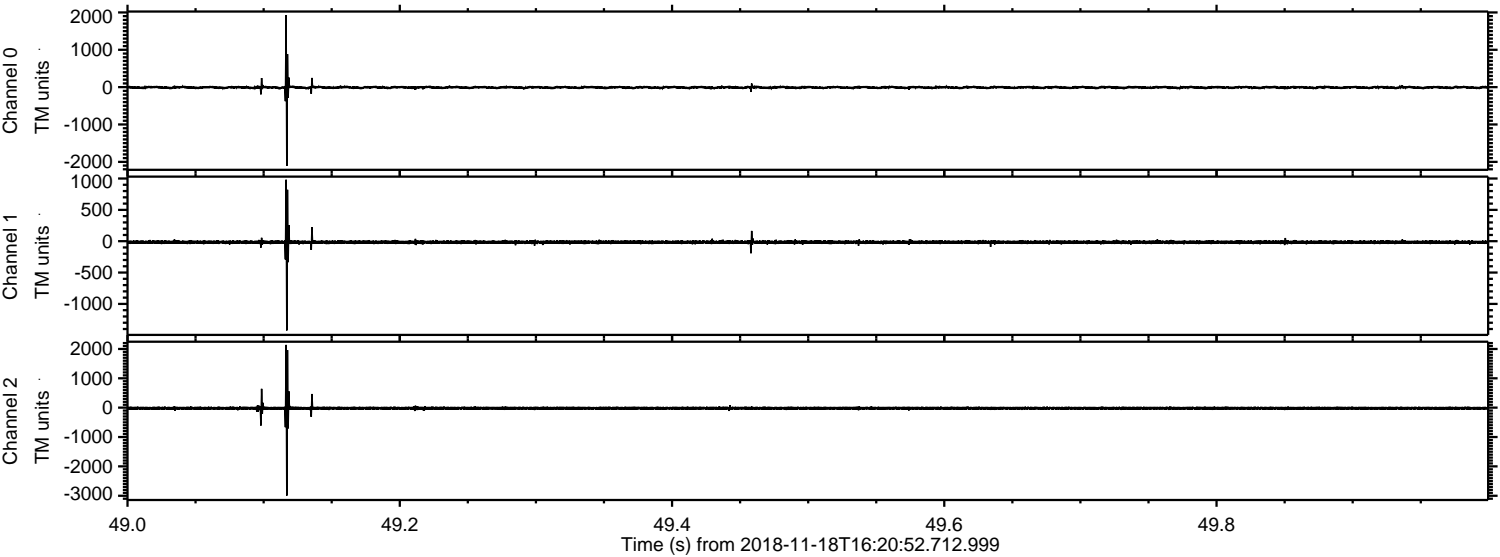
Processed Sun Nov 18 17:29:24 2018 by ELM ver.2012-10-06 from 001__elm20181118_162051__dat00.bin



Processed Sun Nov 18 17:29:25 2018 by ELM ver.2012-10-06 from 001__elm20181118_162051__dat00.bin

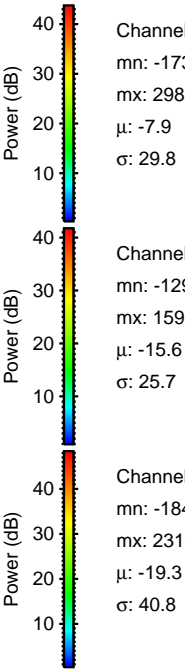
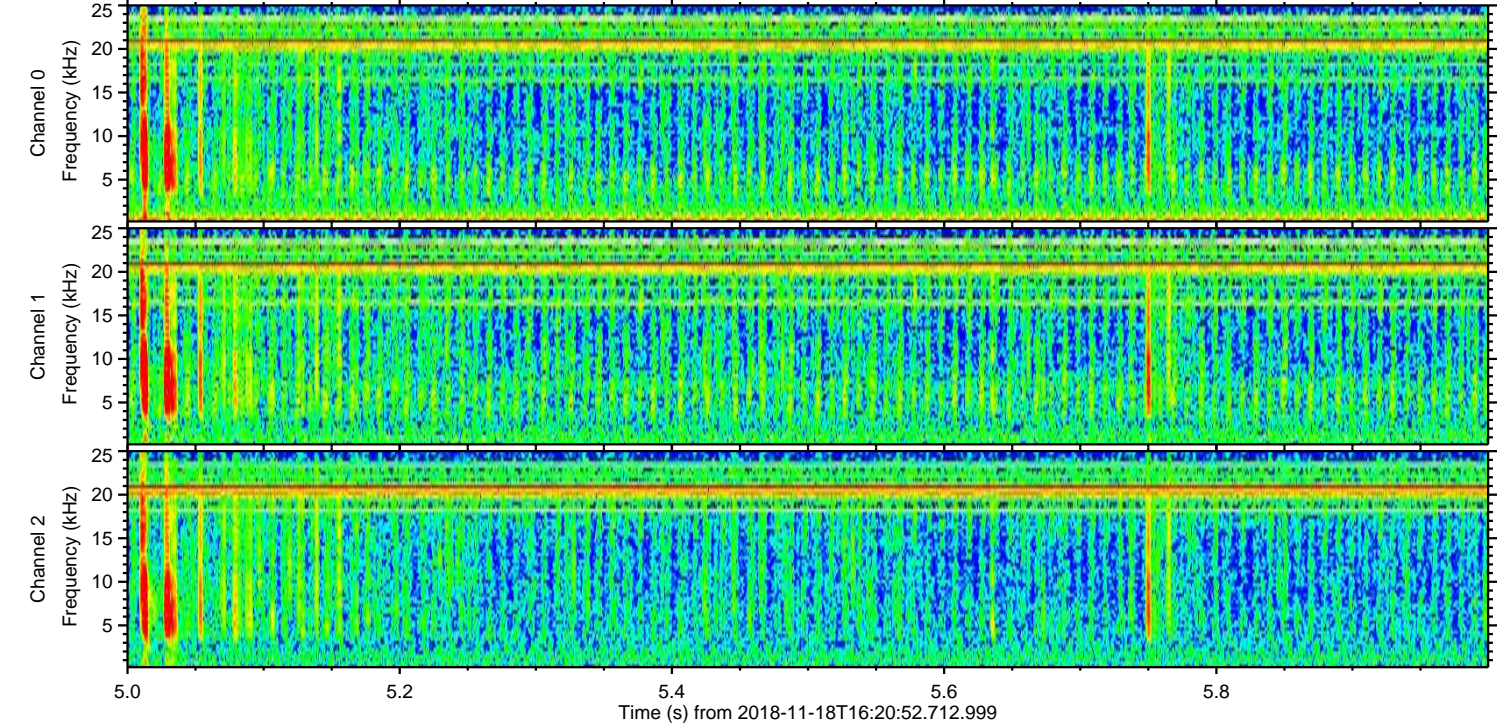
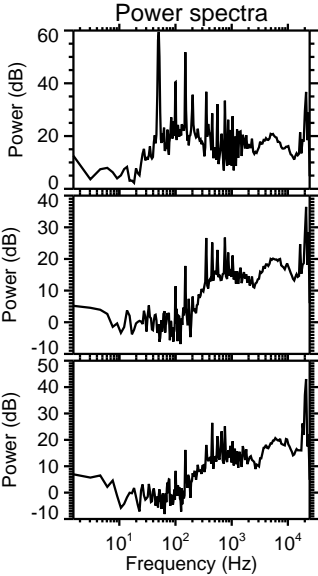
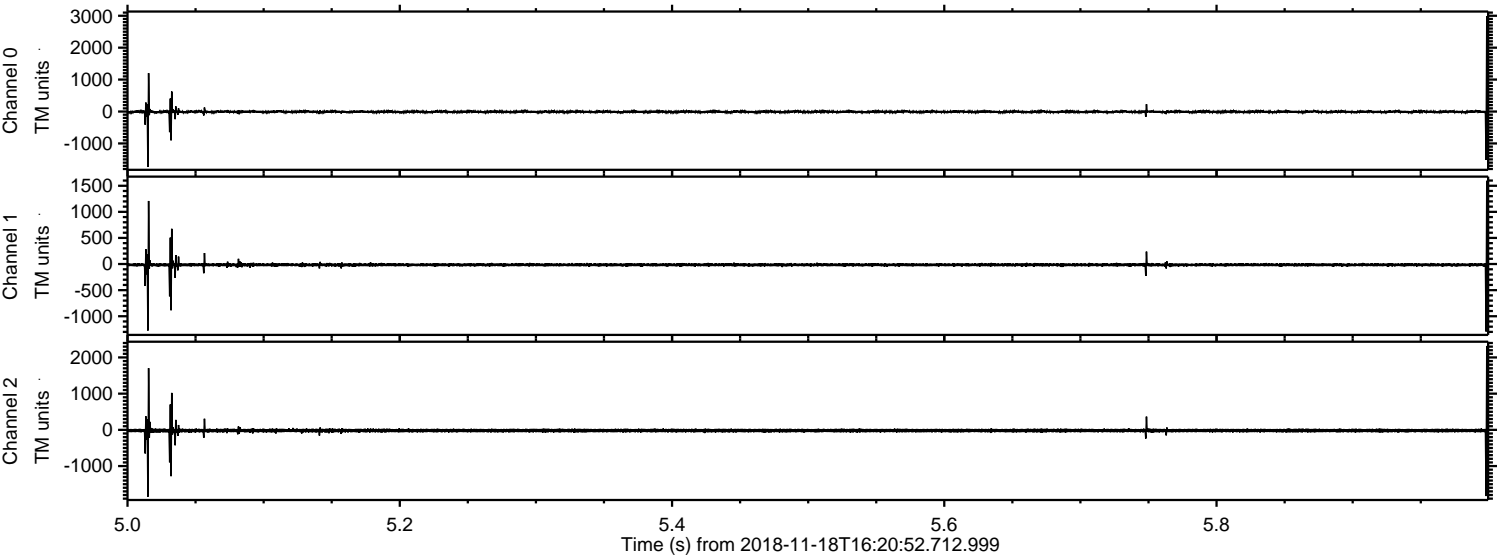


Processed Sun Nov 18 17:29:25 2018 by ELM ver.2012-10-06 from 001__elm20181118_162051__dat00.bin

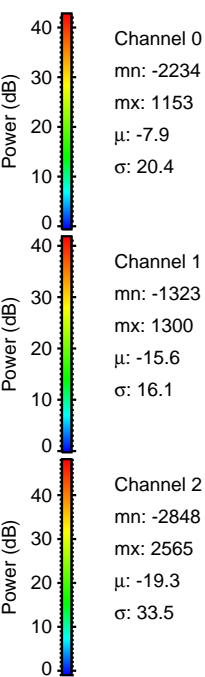
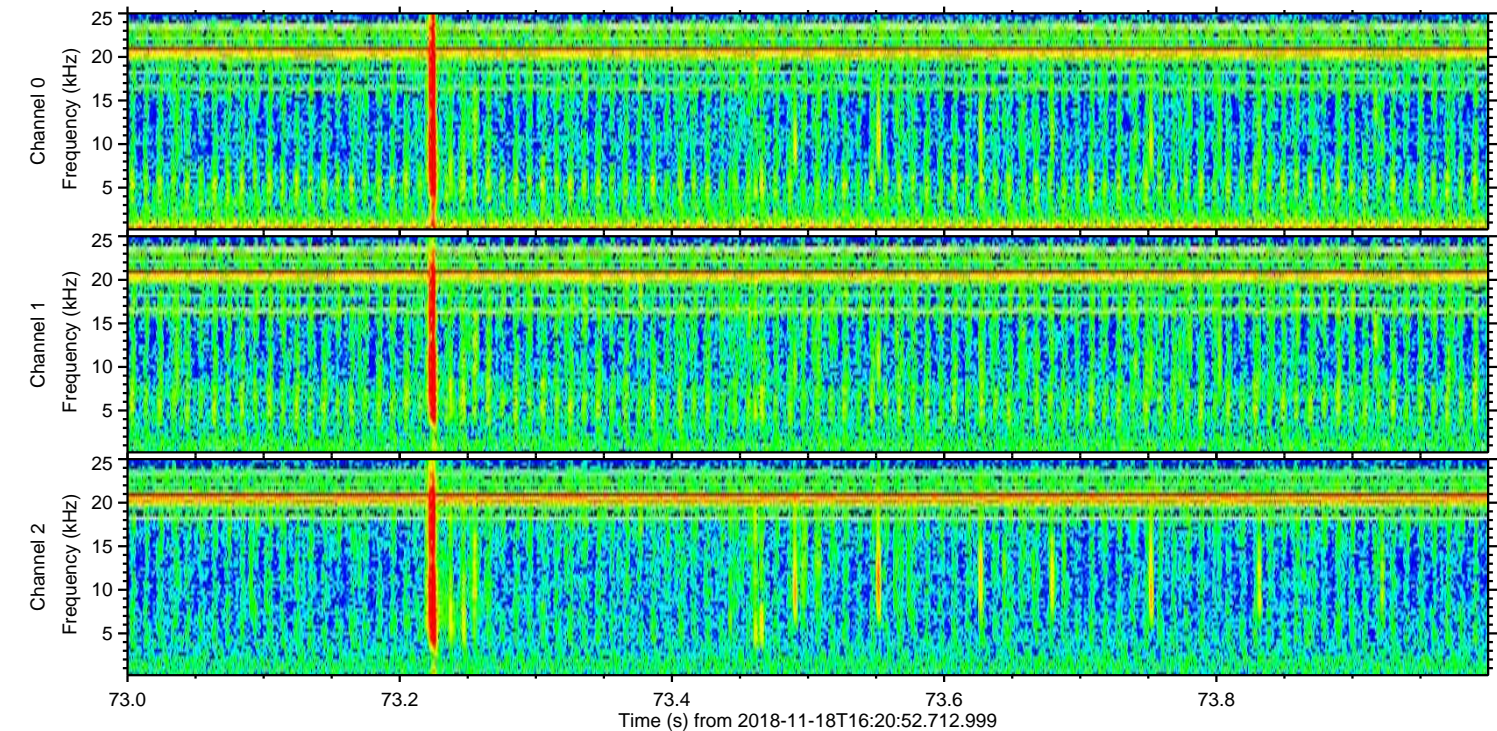
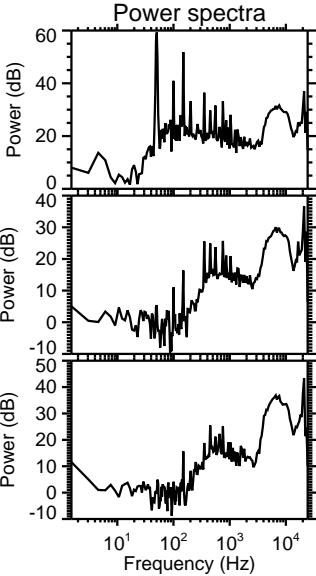
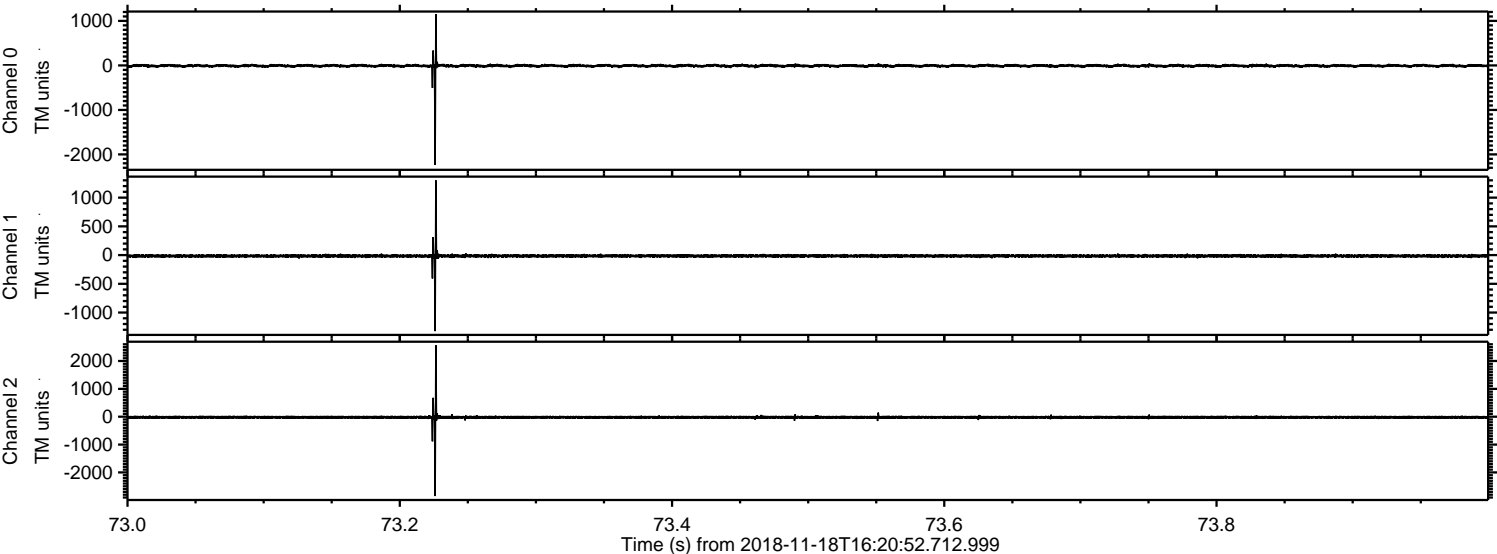


ELMAVAN 3D WAVEFORMS (Measured data sampled at 50 kHz) 50999 packets of 144 samples from 2018-11-18T16:20:52.712.999. Part 6/147

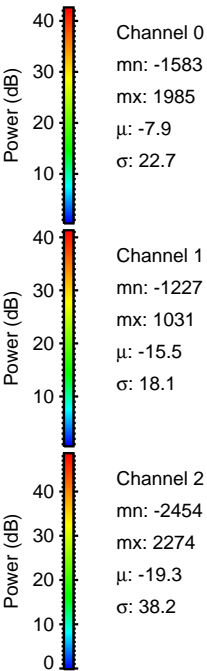
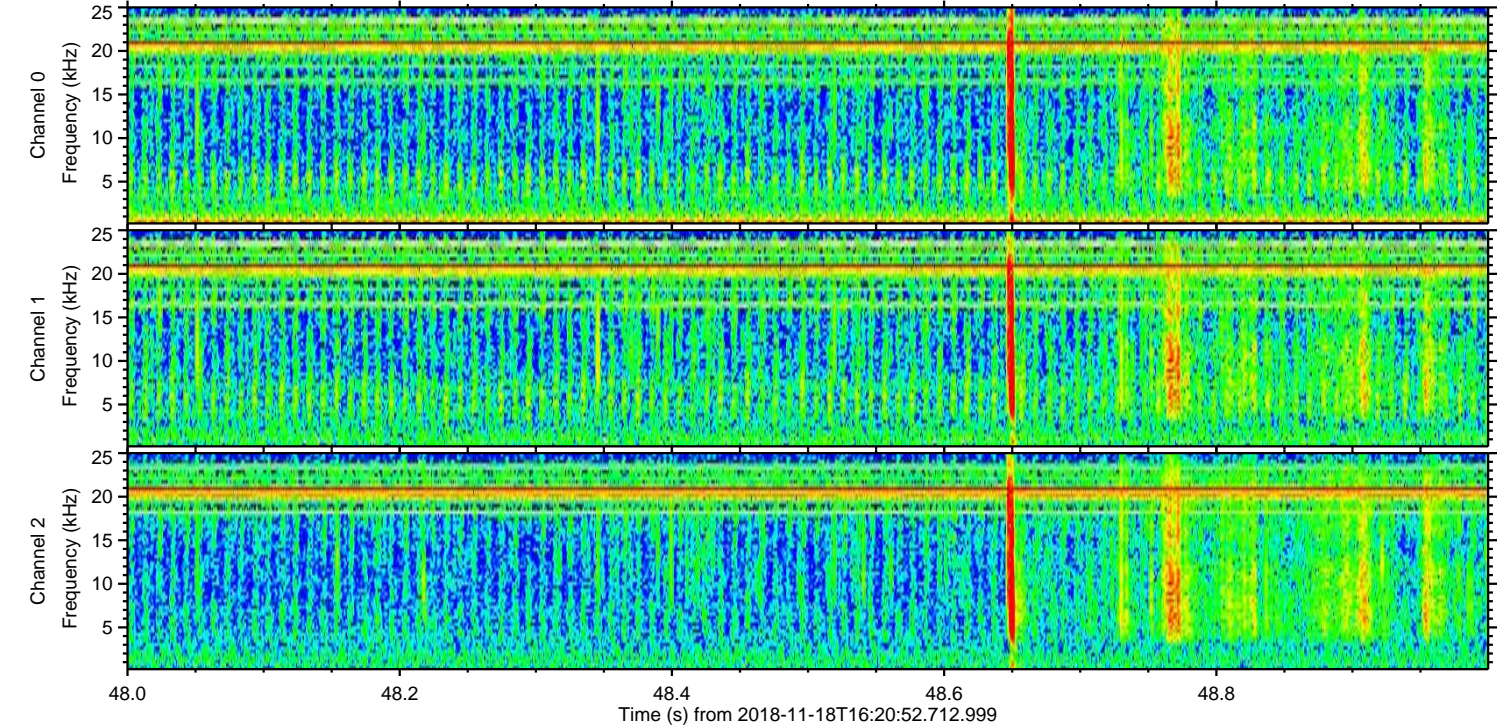
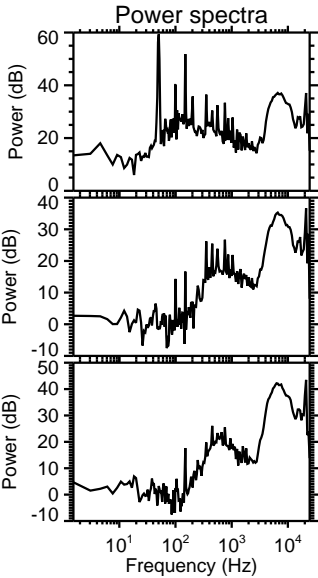
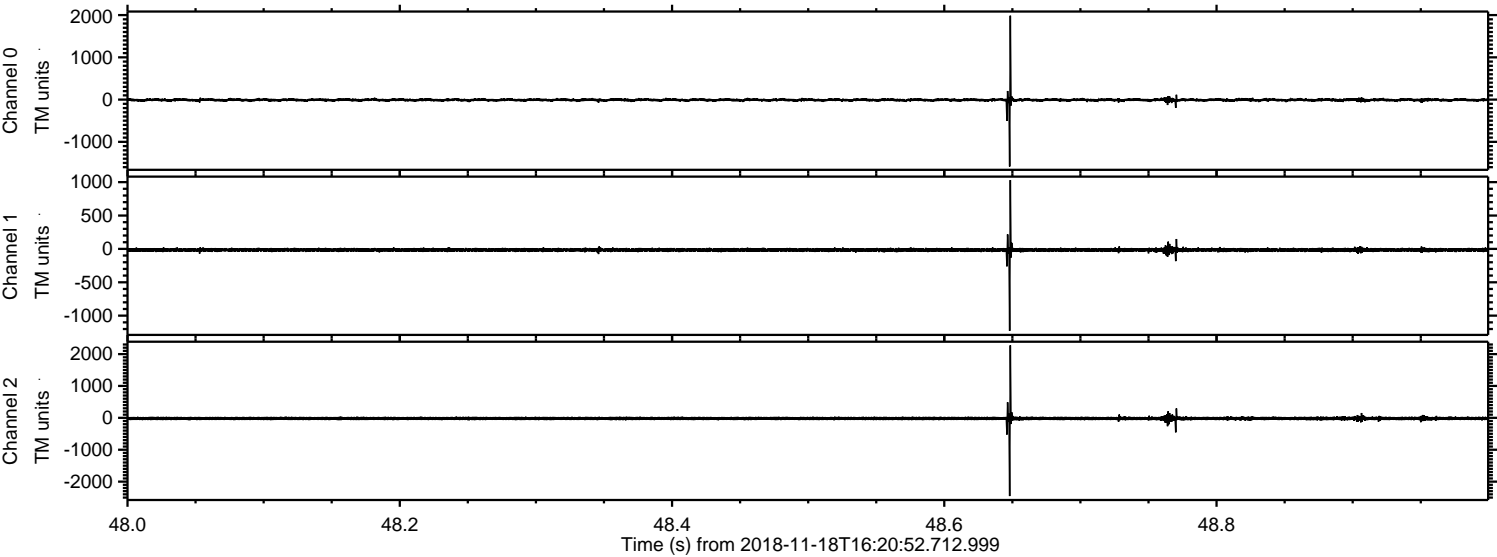
Processed Sun Nov 18 17:29:26 2018 by ELM ver.2012-10-06 from 001__elm20181118_162051__dat00.bin



Processed Sun Nov 18 17:29:27 2018 by ELM ver.2012-10-06 from 001__elm20181118_162051__dat00.bin

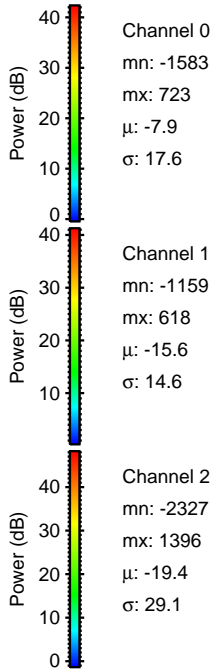
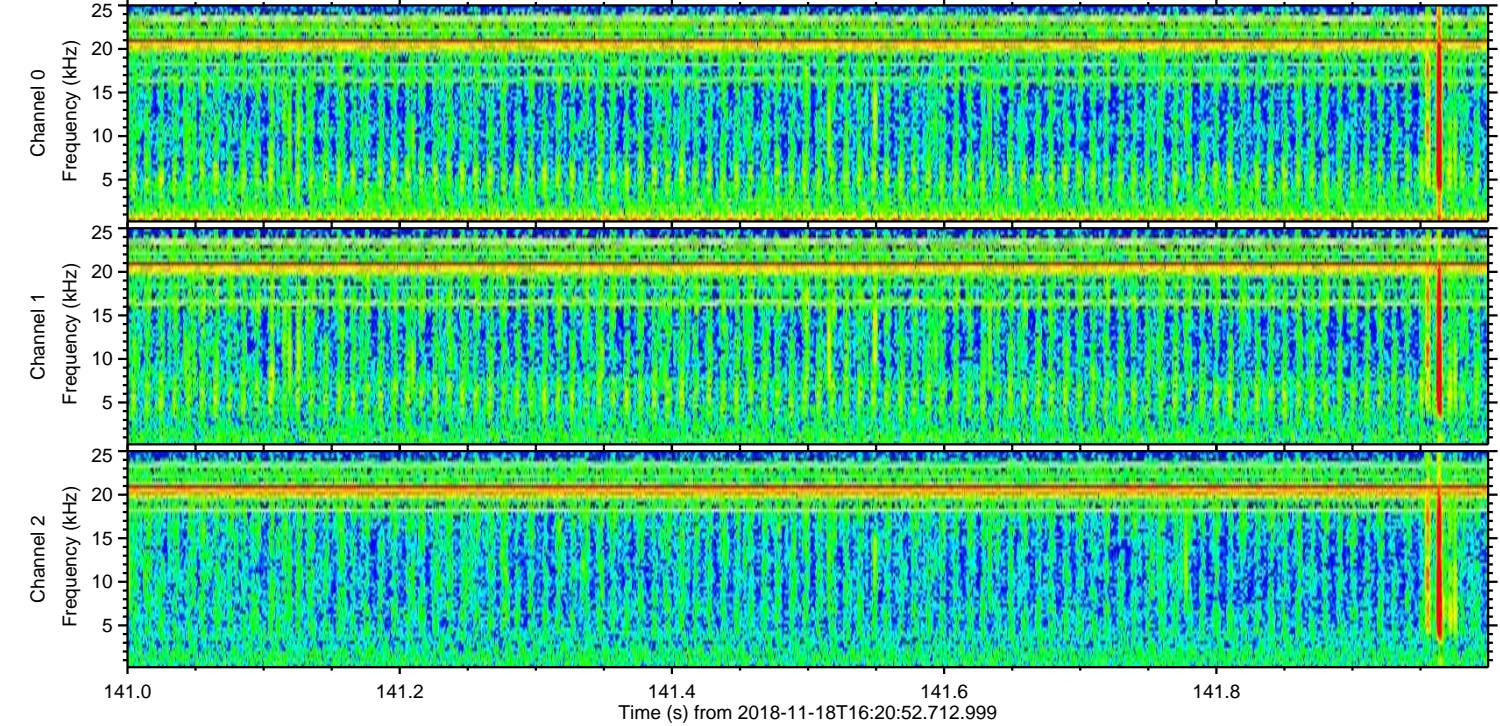
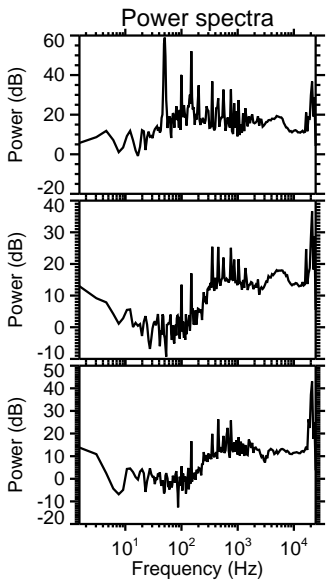
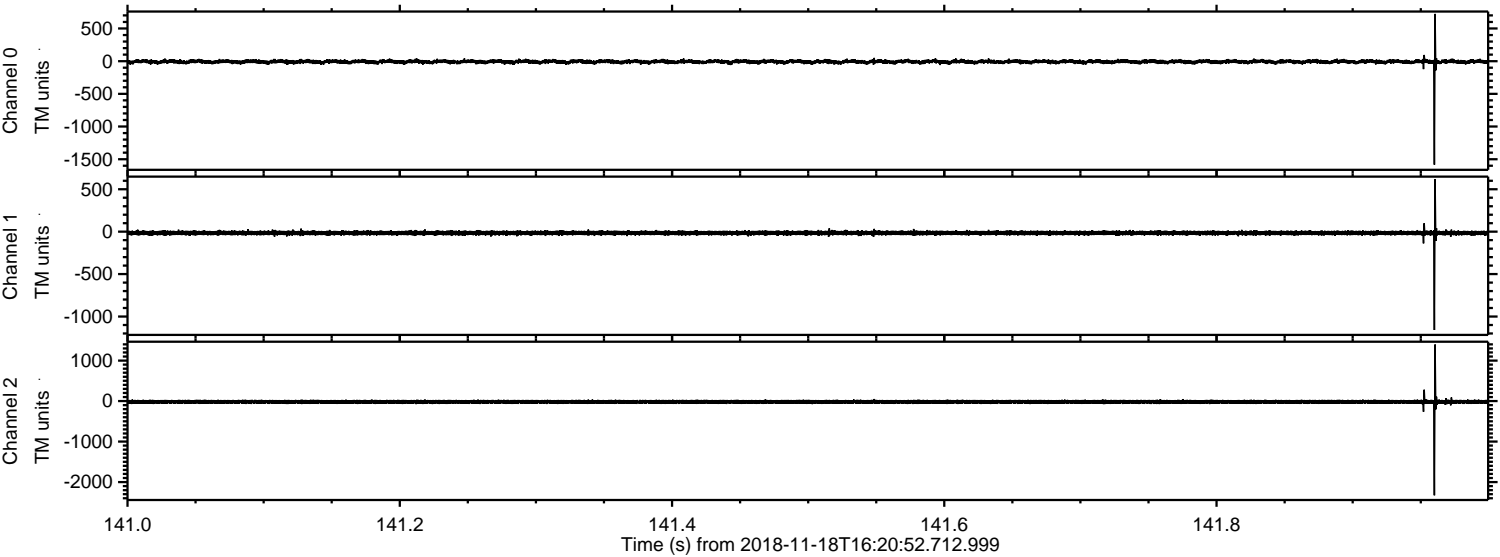


Processed Sun Nov 18 17:29:28 2018 by ELM ver.2012-10-06 from 001_elm20181118_162051_dat00.bin



ELMAVAN 3D WAVEFORMS (Measured data sampled at 50 kHz) 50999 packets of 144 samples from 2018-11-18T16:20:52.712.999. Part 142/147

Processed Sun Nov 18 17:29:29 2018 by ELM ver.2012-10-06 from 001__elm20181118_162051__dat00.bin

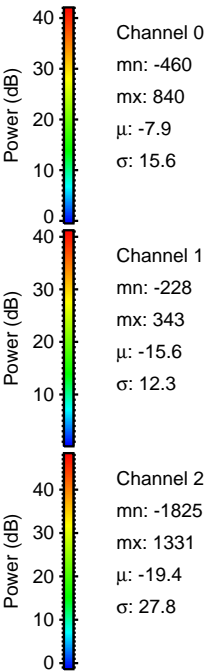
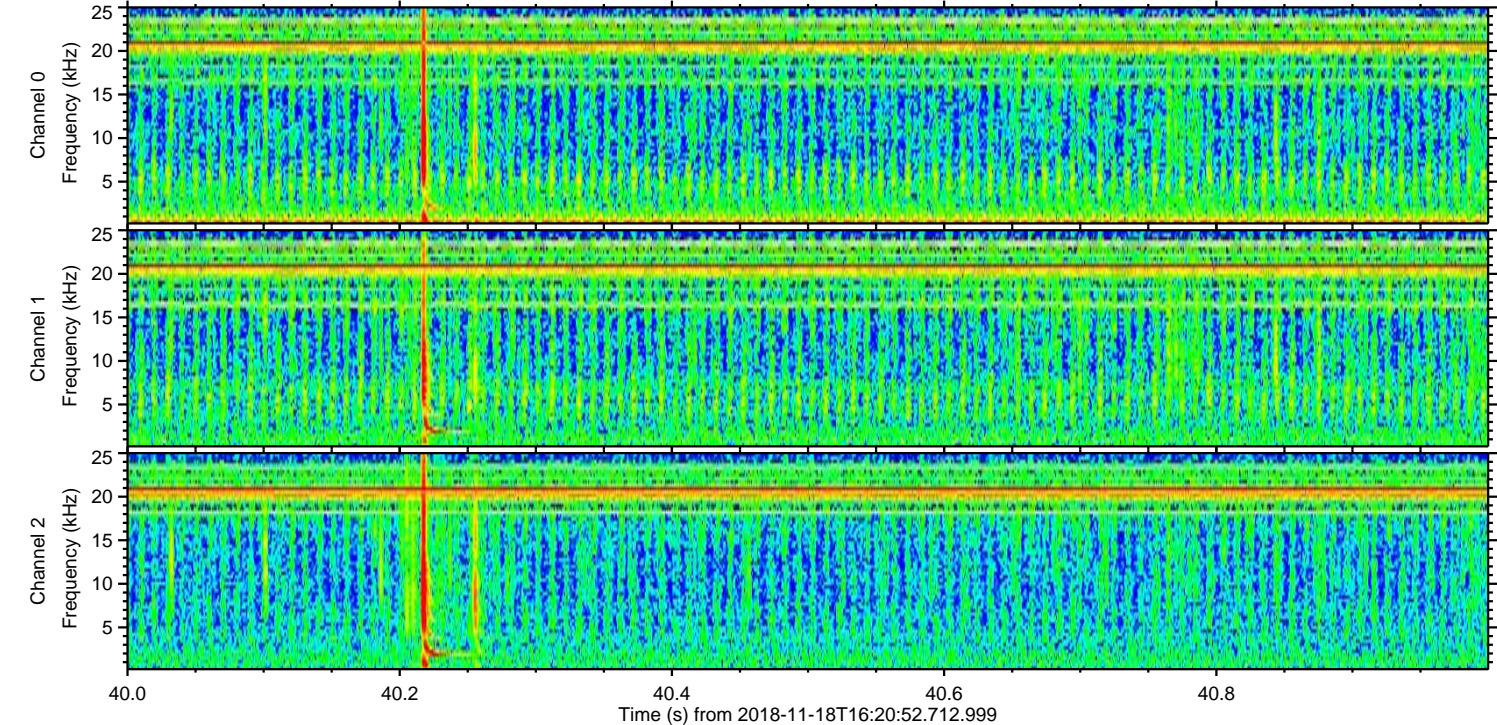
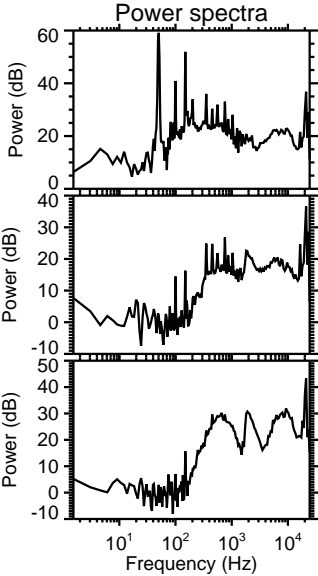
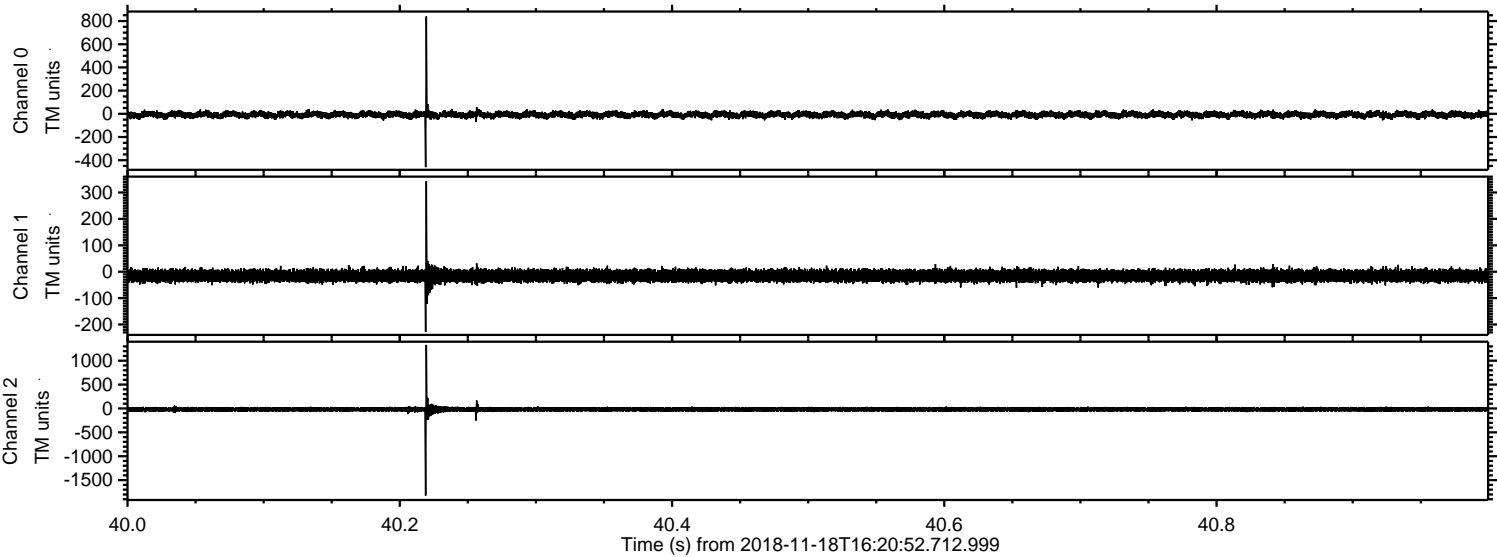


Channel 0
mn: -1583
mx: 723
 μ : -7.9
 σ : 17.6

Channel 1
mn: -1159
mx: 618
 μ : -15.6
 σ : 14.6

Channel 2
mn: -2327
mx: 1396
 μ : -19.4
 σ : 29.1

Processed Sun Nov 18 17:29:30 2018 by ELM ver.2012-10-06 from 001_elm20181118_162051__dat00.bin



Processed Sun Nov 18 17:29:30 2018 by ELM ver.2012-10-06 from 001__elm20181118_162051__dat00.bin

