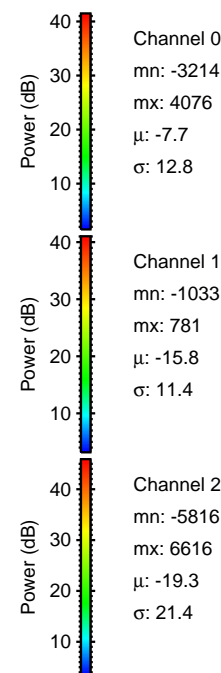
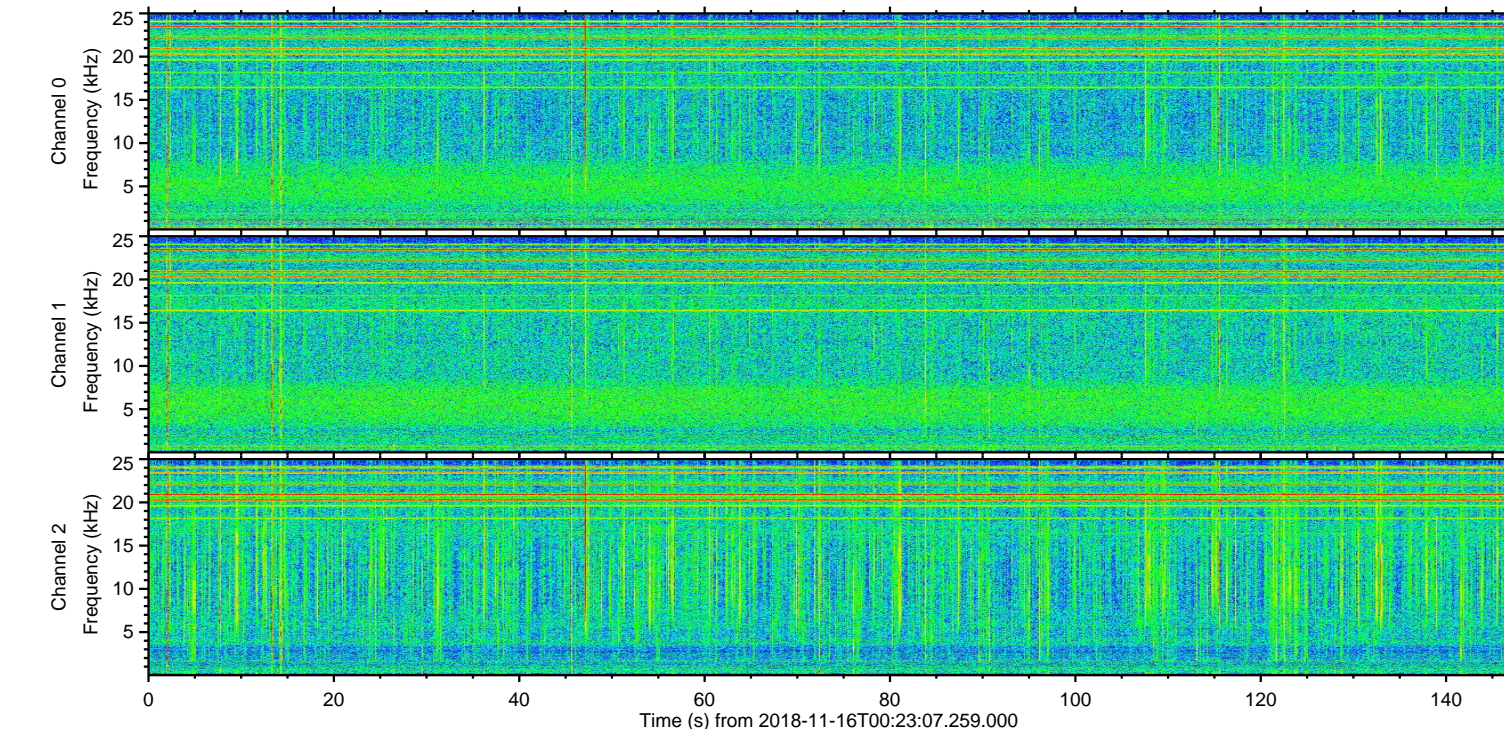
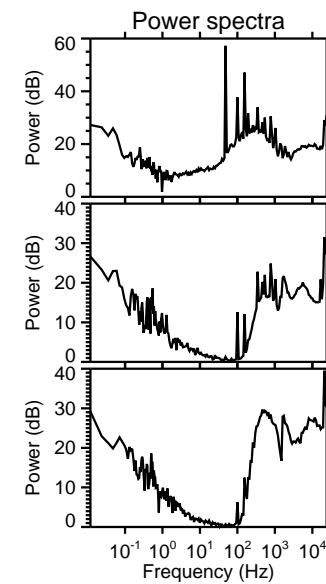
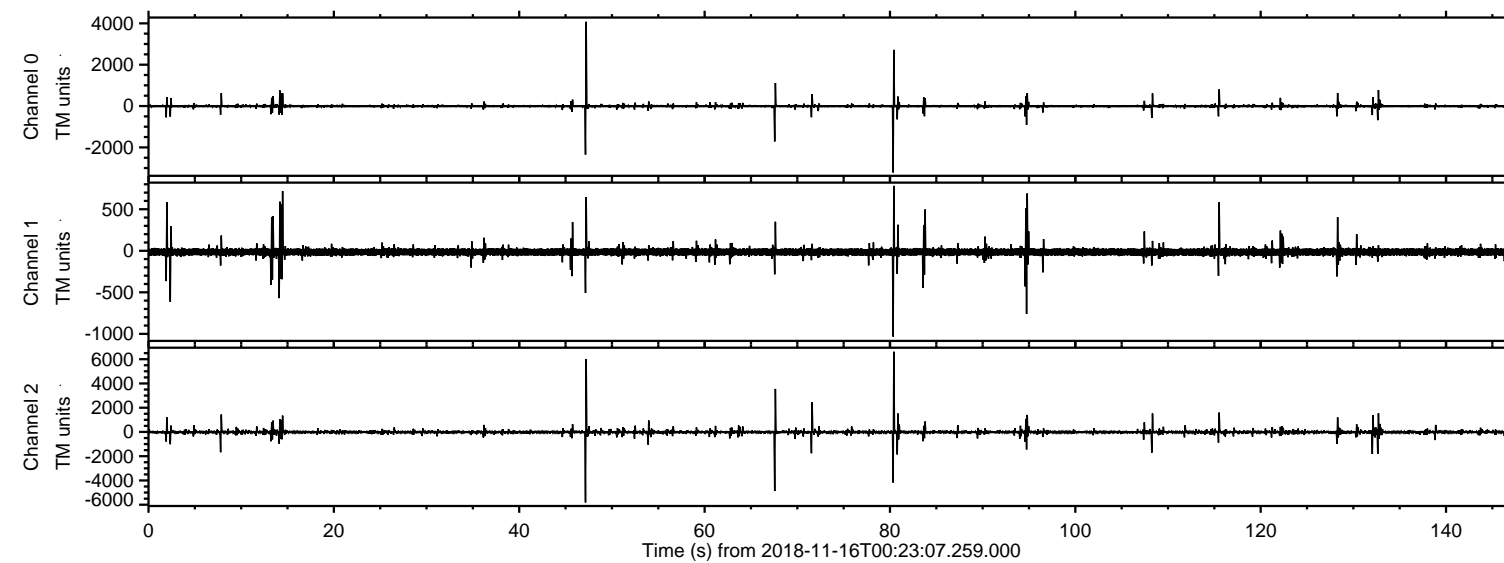
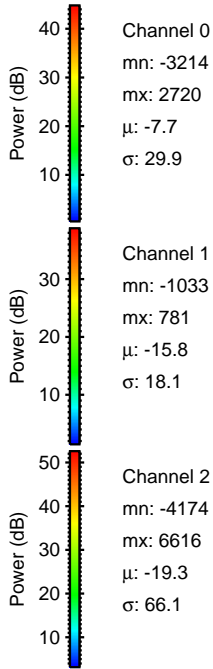
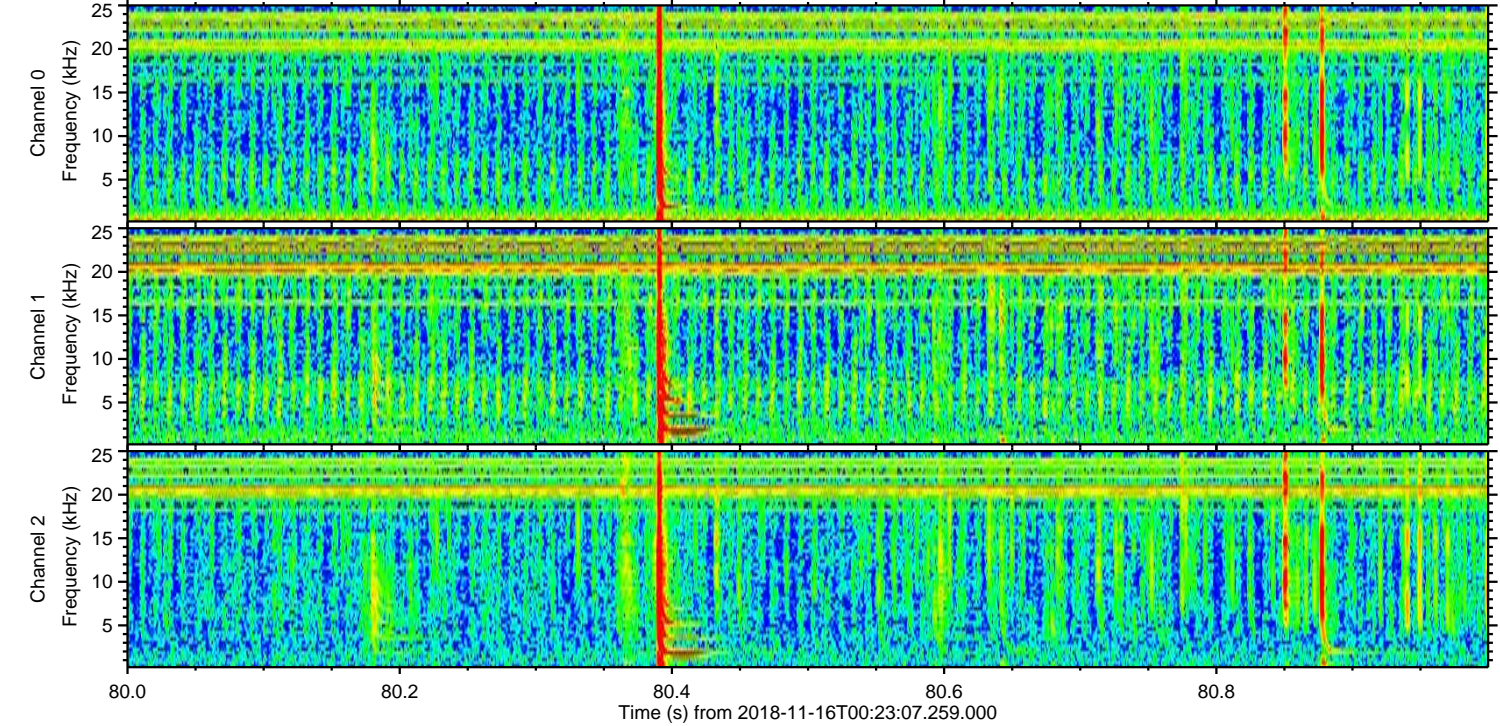
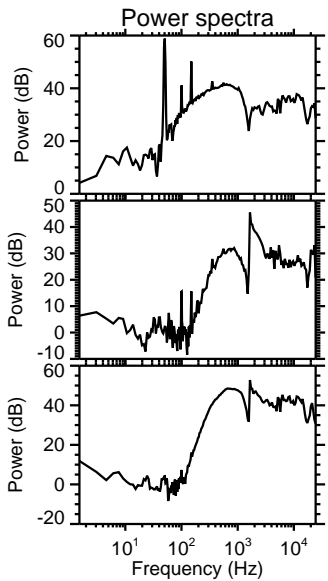
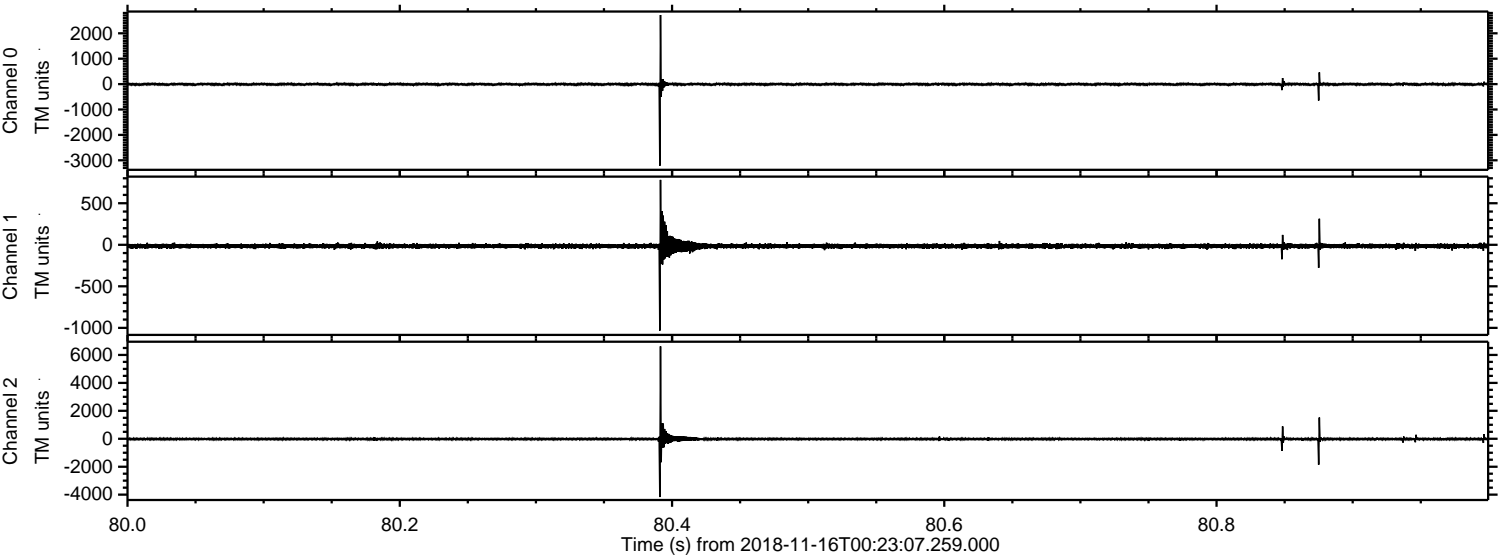


ELMAVAN 3D WAVEFORMS (Measured data sampled at 50 kHz) 51000 packets of 144 samples from 2018-11-16T00:23:07.259.000.

Processed Fri Nov 16 01:31:24 2018 by ELM ver.2012-10-06 from 001__elm20181116_002306__dat00.bin



Processed Fri Nov 16 01:31:31 2018 by ELM ver.2012-10-06 from 001__elm20181116_002306__dat00.bin

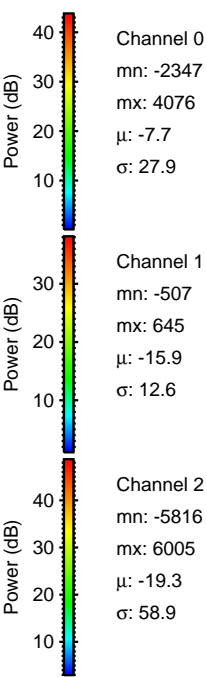
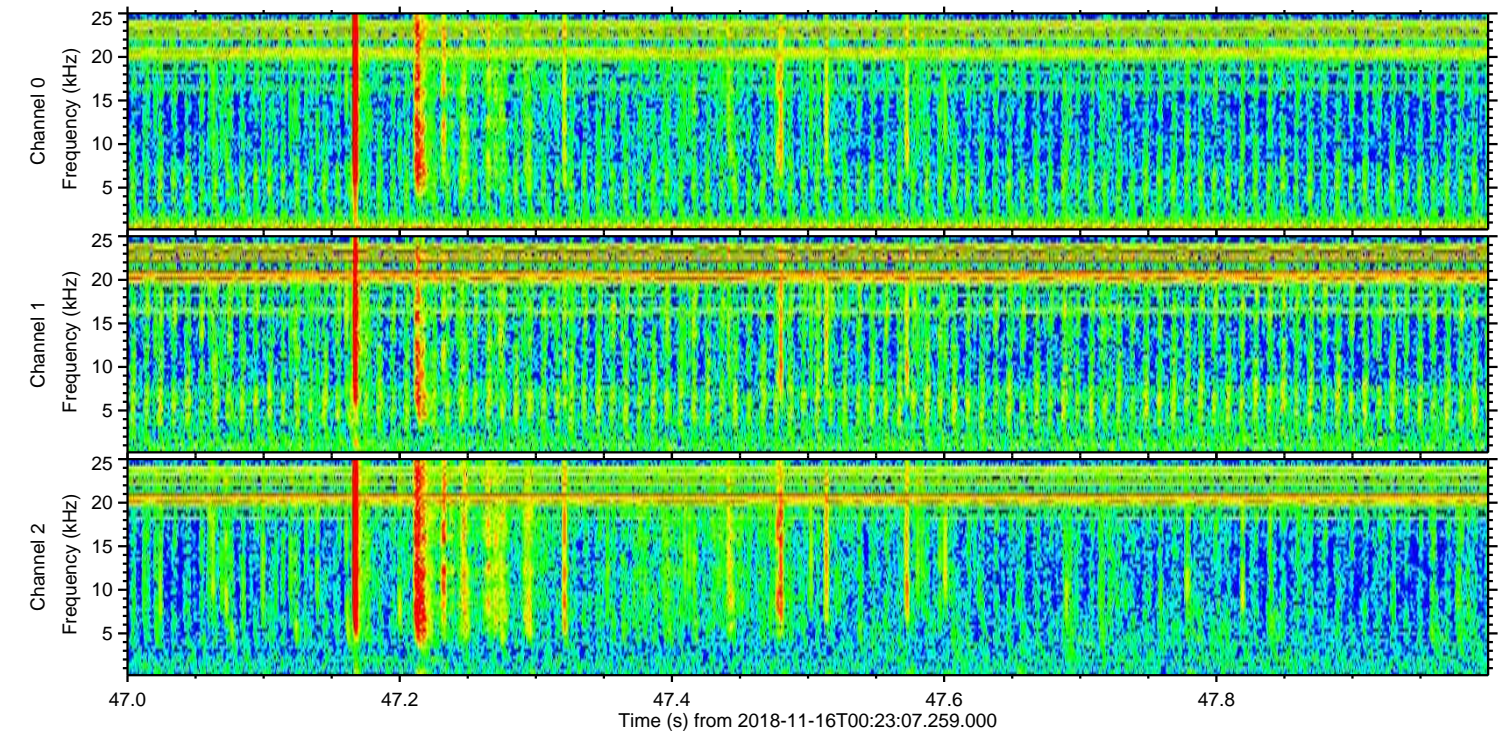
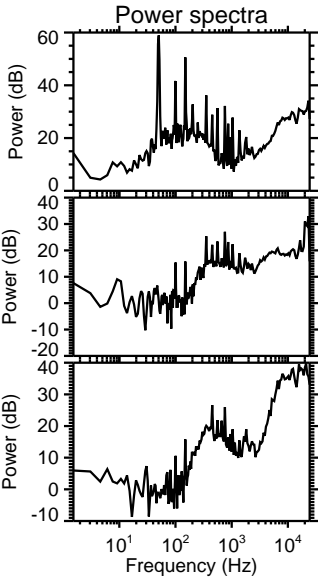
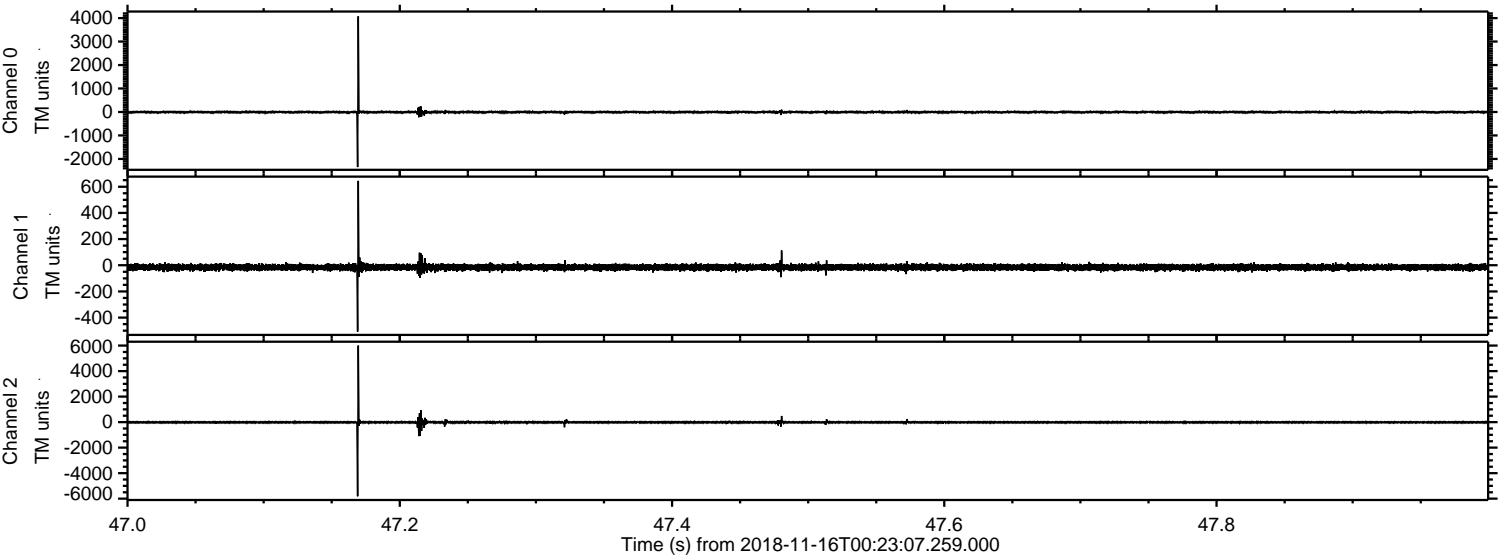


Channel 0
mn: -3214
mx: 2720
 μ : -7.7
 σ : 29.9

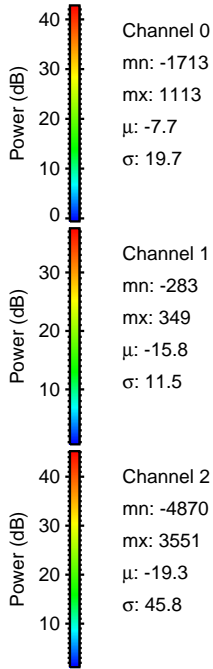
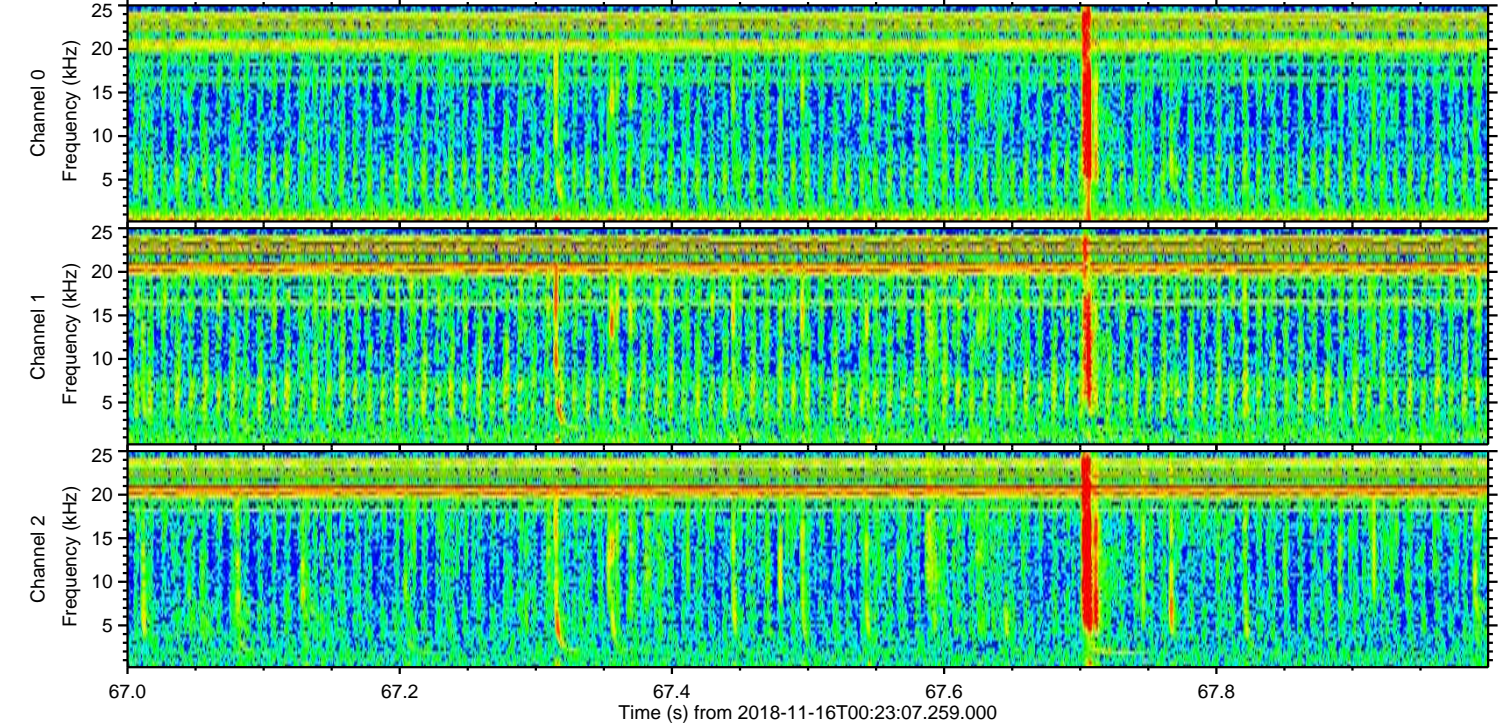
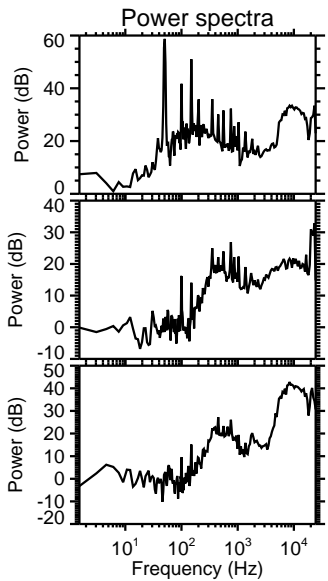
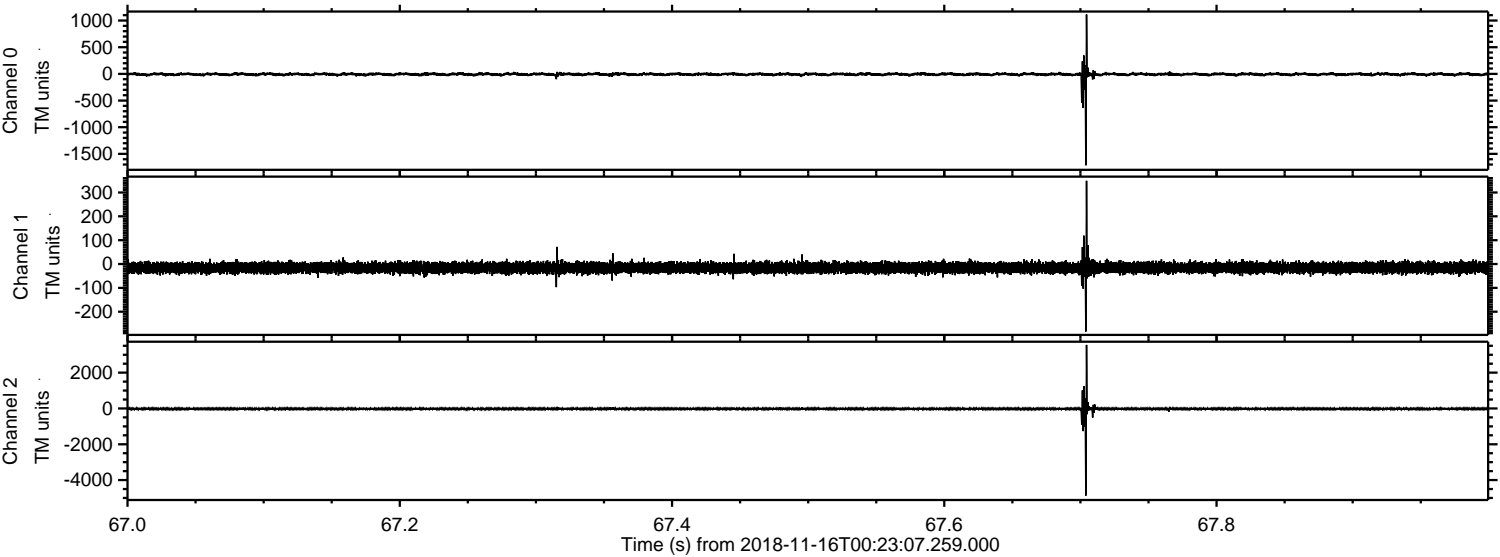
Channel 1
mn: -1033
mx: 781
 μ : -15.8
 σ : 18.1

Channel 2
mn: -4174
mx: 6616
 μ : -19.3
 σ : 66.1

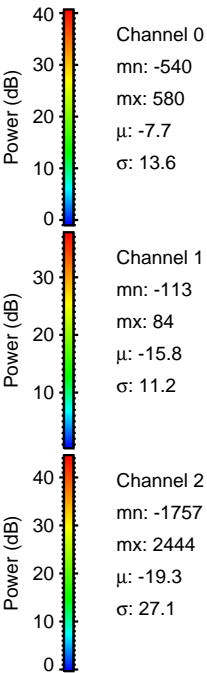
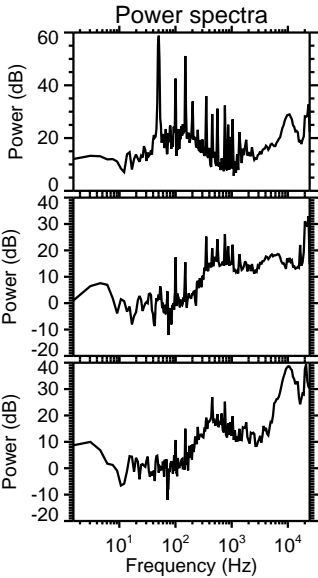
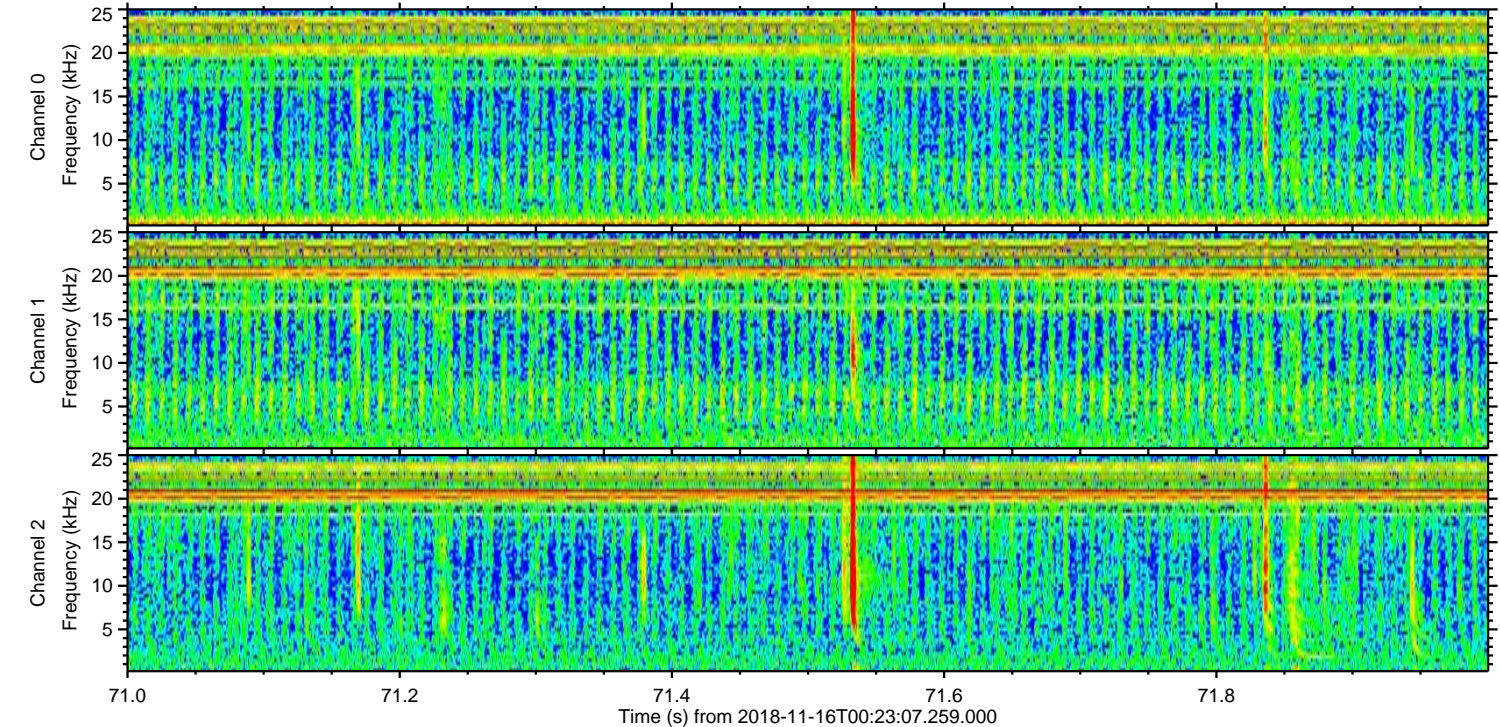
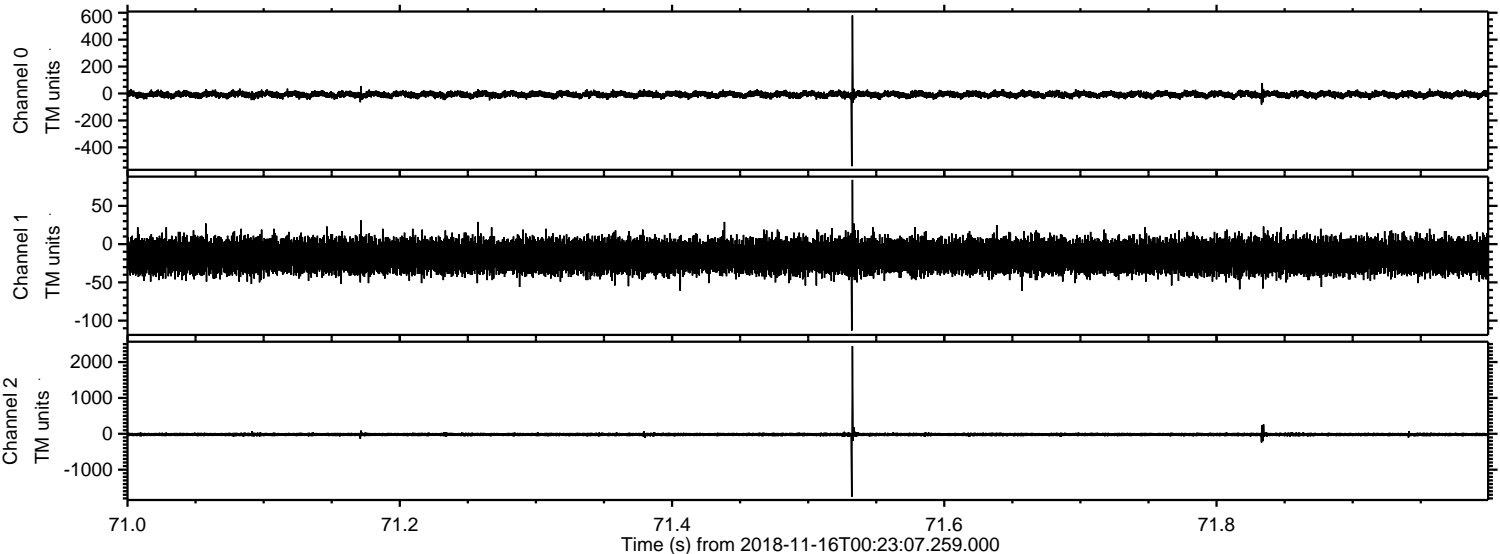
Processed Fri Nov 16 01:31:31 2018 by ELM ver.2012-10-06 from 001__elm20181116_002306__dat00.bin



Processed Fri Nov 16 01:31:32 2018 by ELM ver.2012-10-06 from 001__elm20181116_002306__dat00.bin

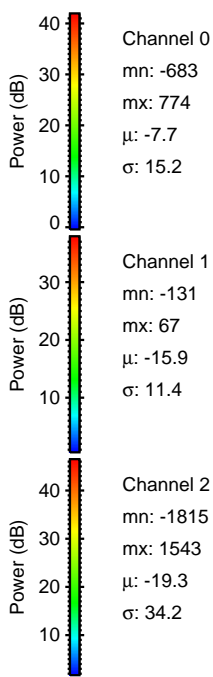
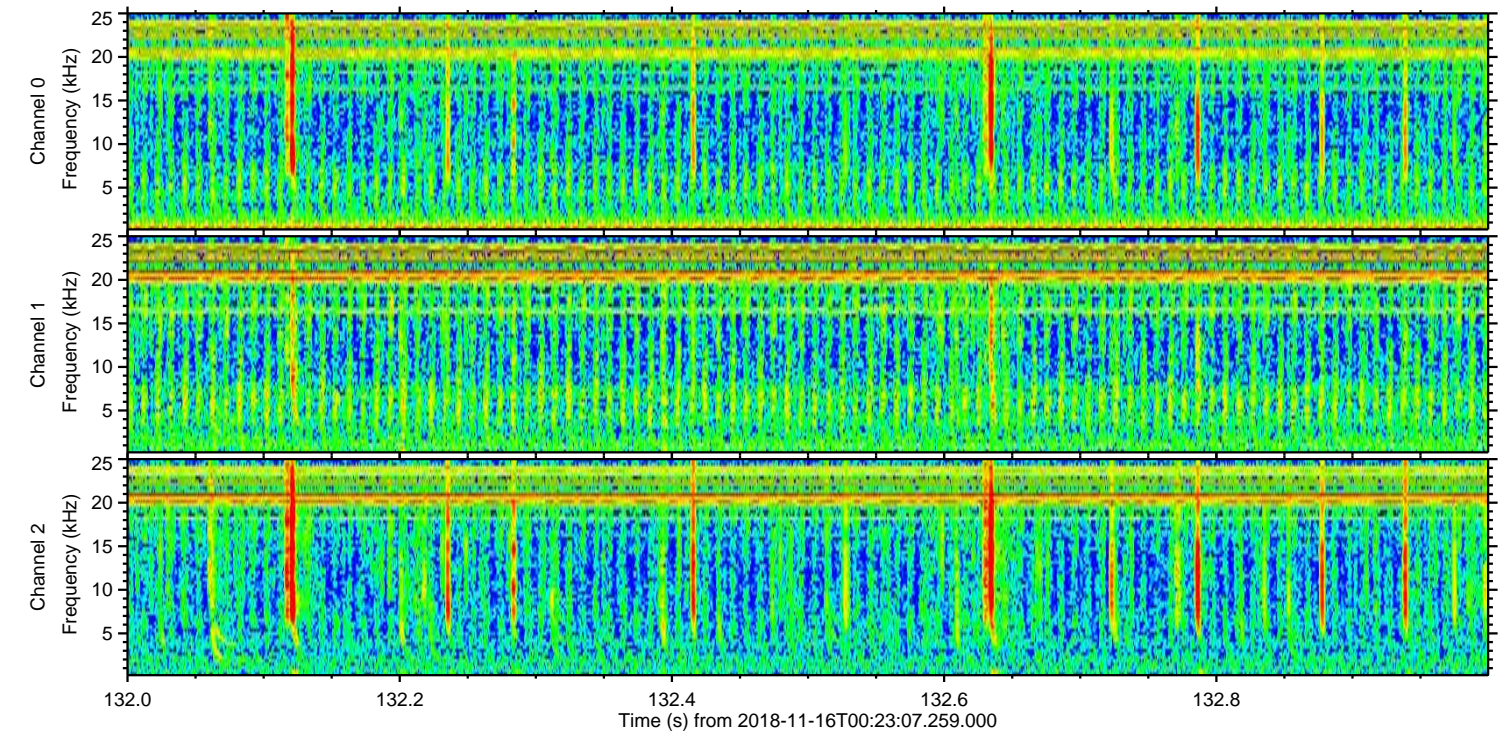
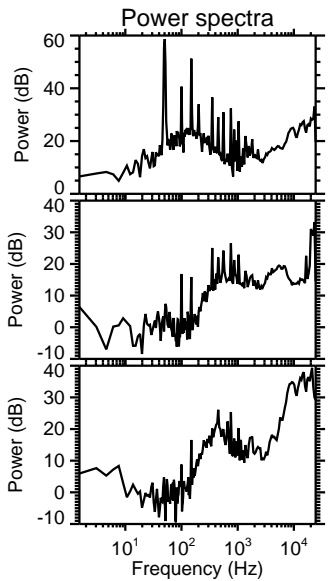
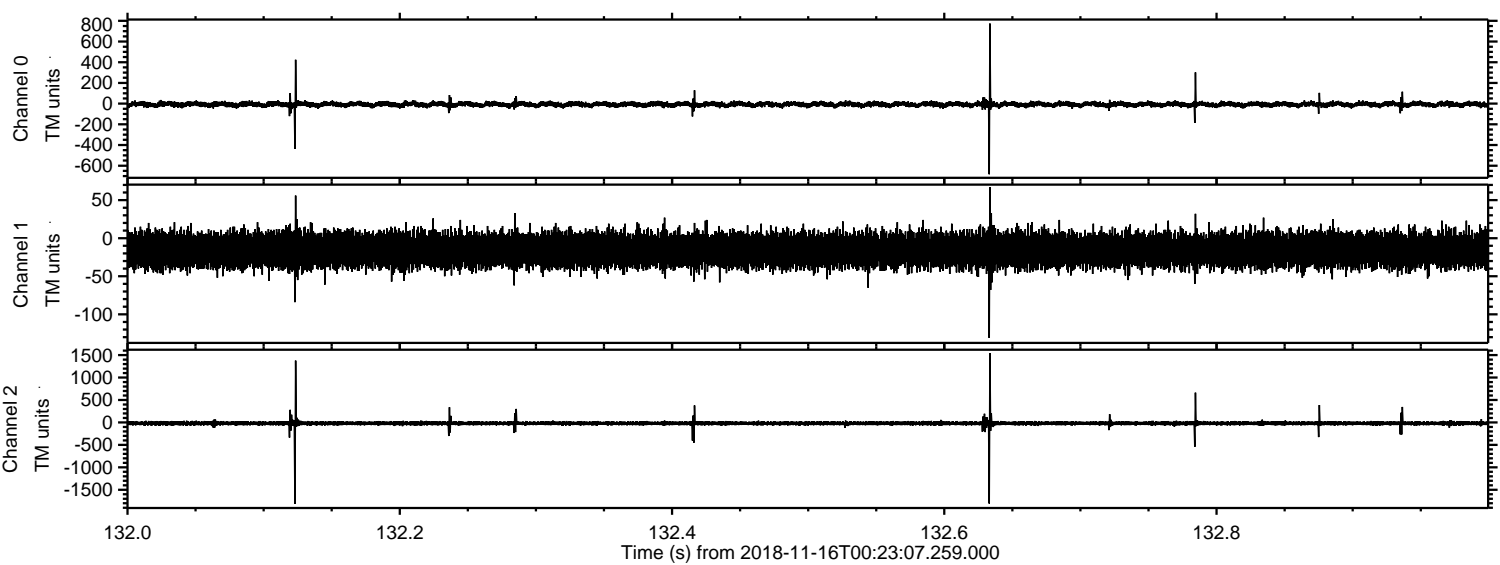


Processed Fri Nov 16 01:31:33 2018 by ELM ver.2012-10-06 from 001__elm20181116_002306__dat00.bin

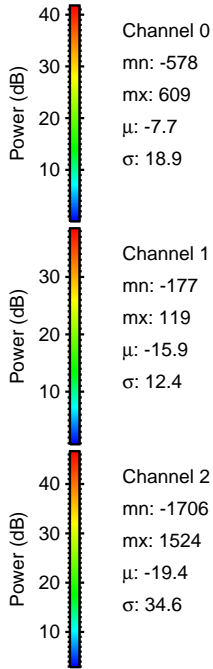
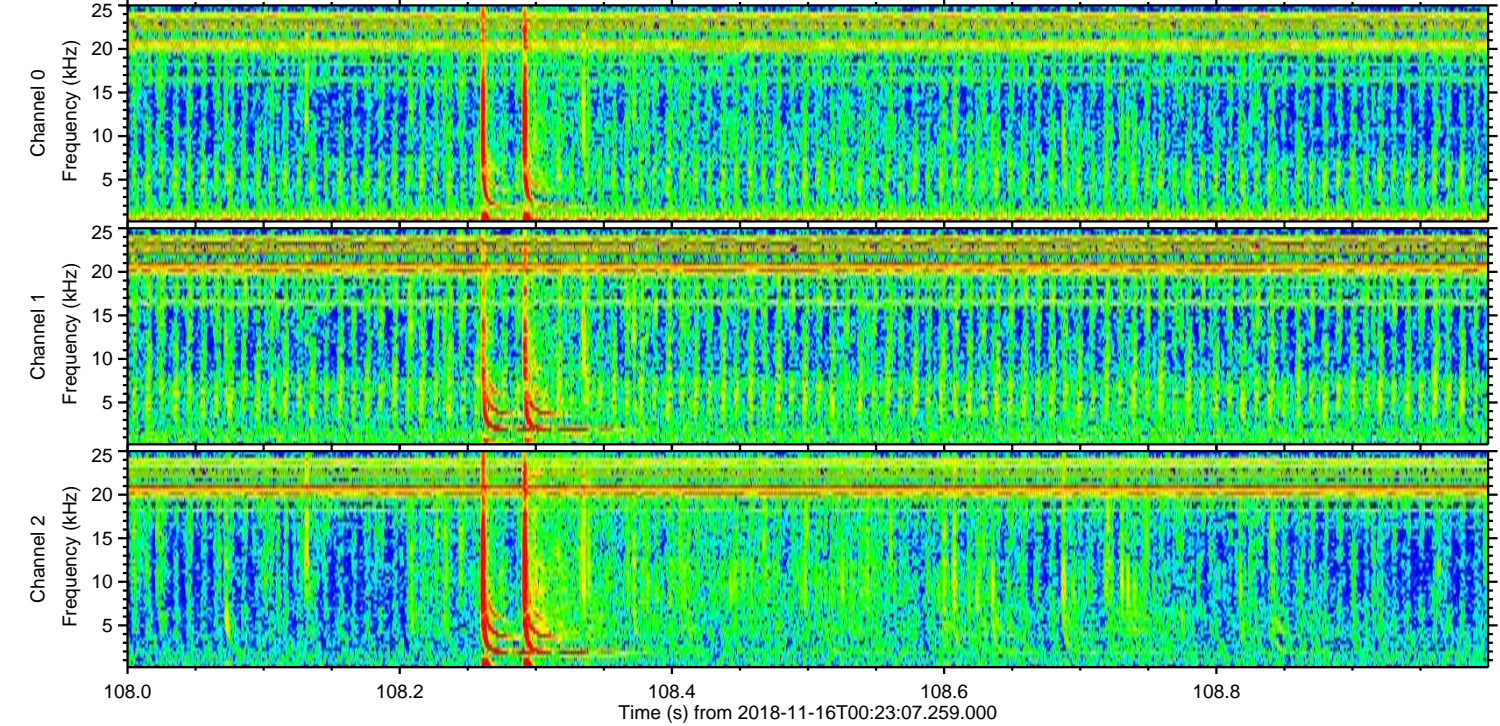
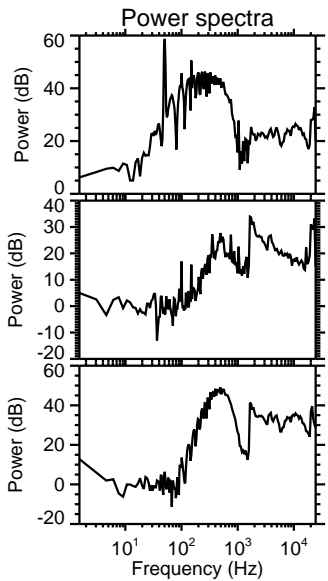
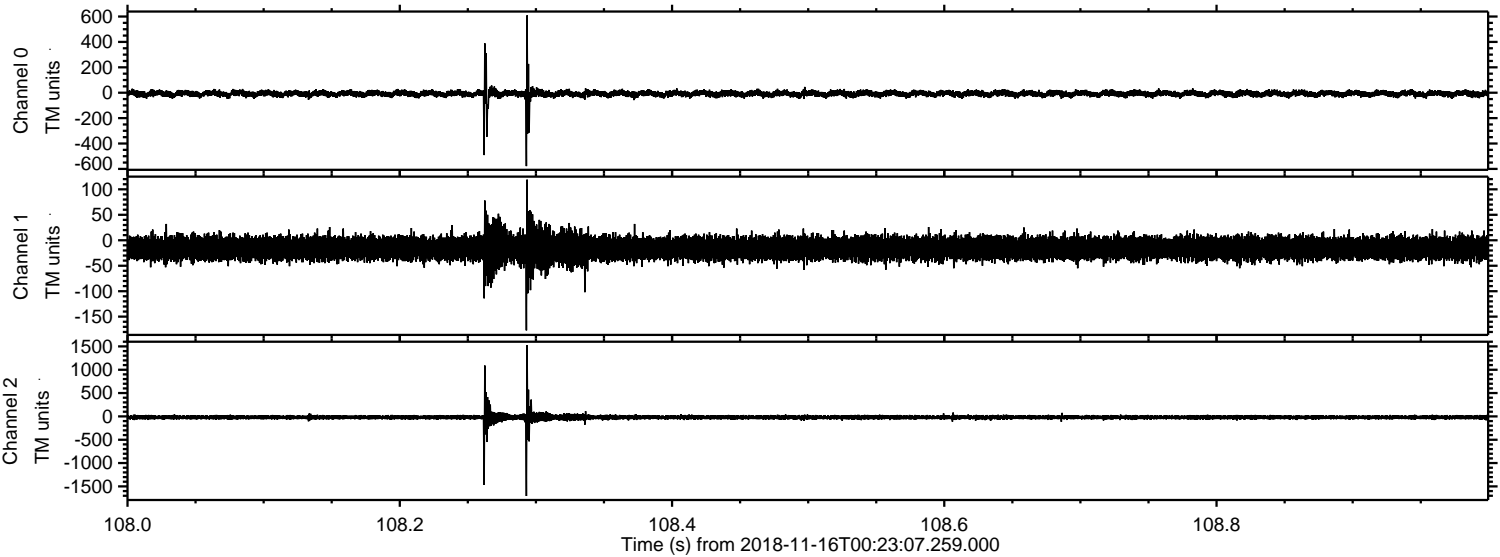


ELMAVAN 3D WAVEFORMS (Measured data sampled at 50 kHz) 51000 packets of 144 samples from 2018-11-16T00:23:07.259.000. Part 133/147

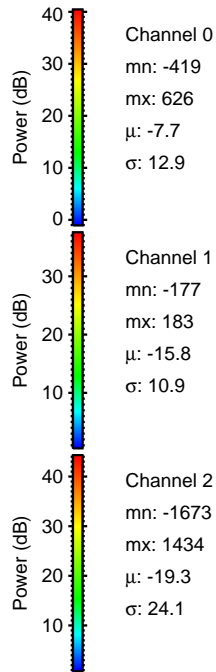
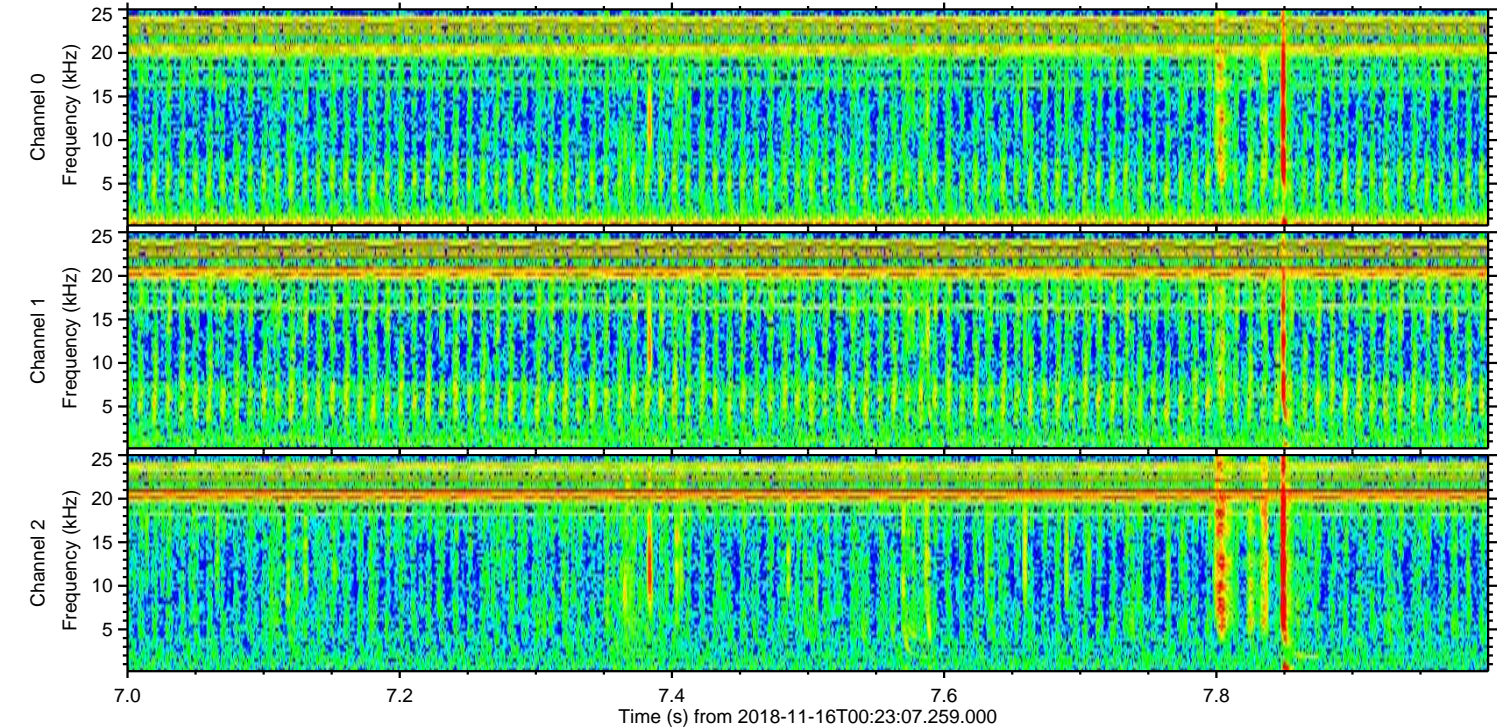
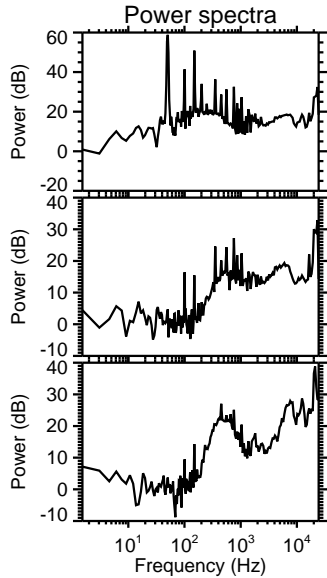
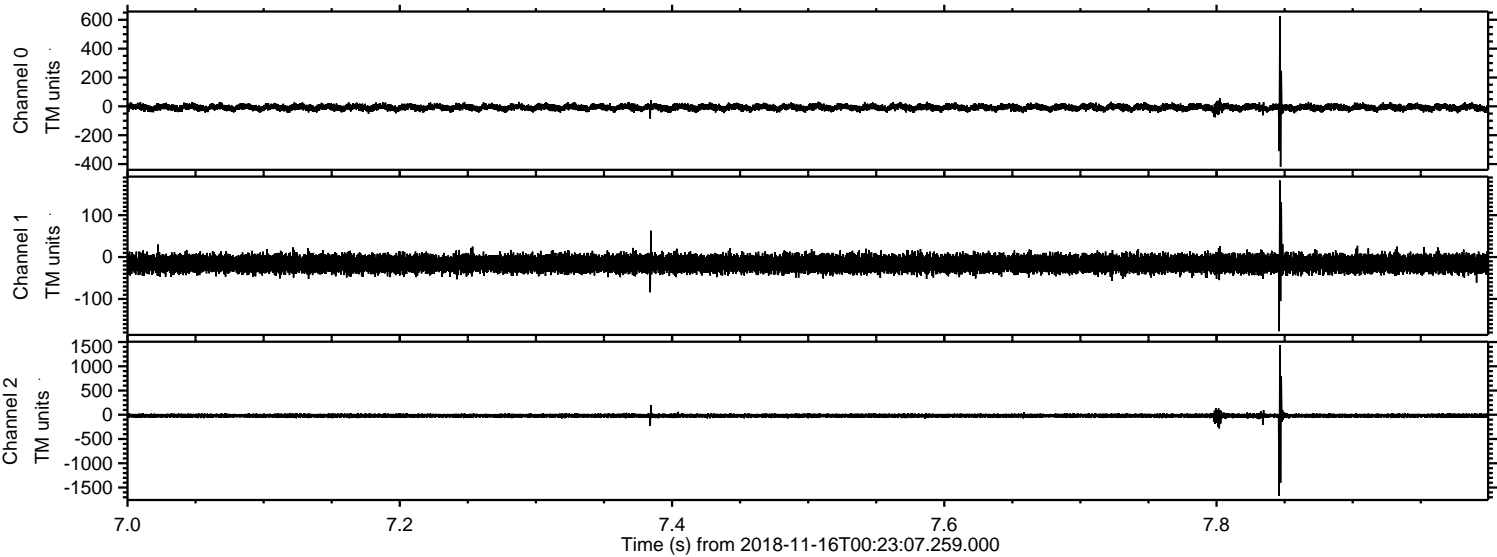
Processed Fri Nov 16 01:31:34 2018 by ELM ver.2012-10-06 from 001__elm20181116_002306__dat00.bin



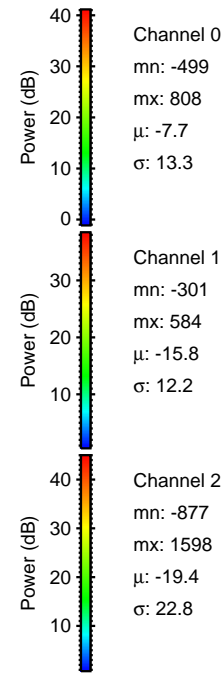
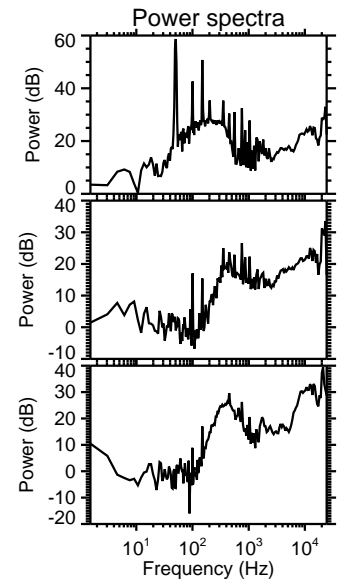
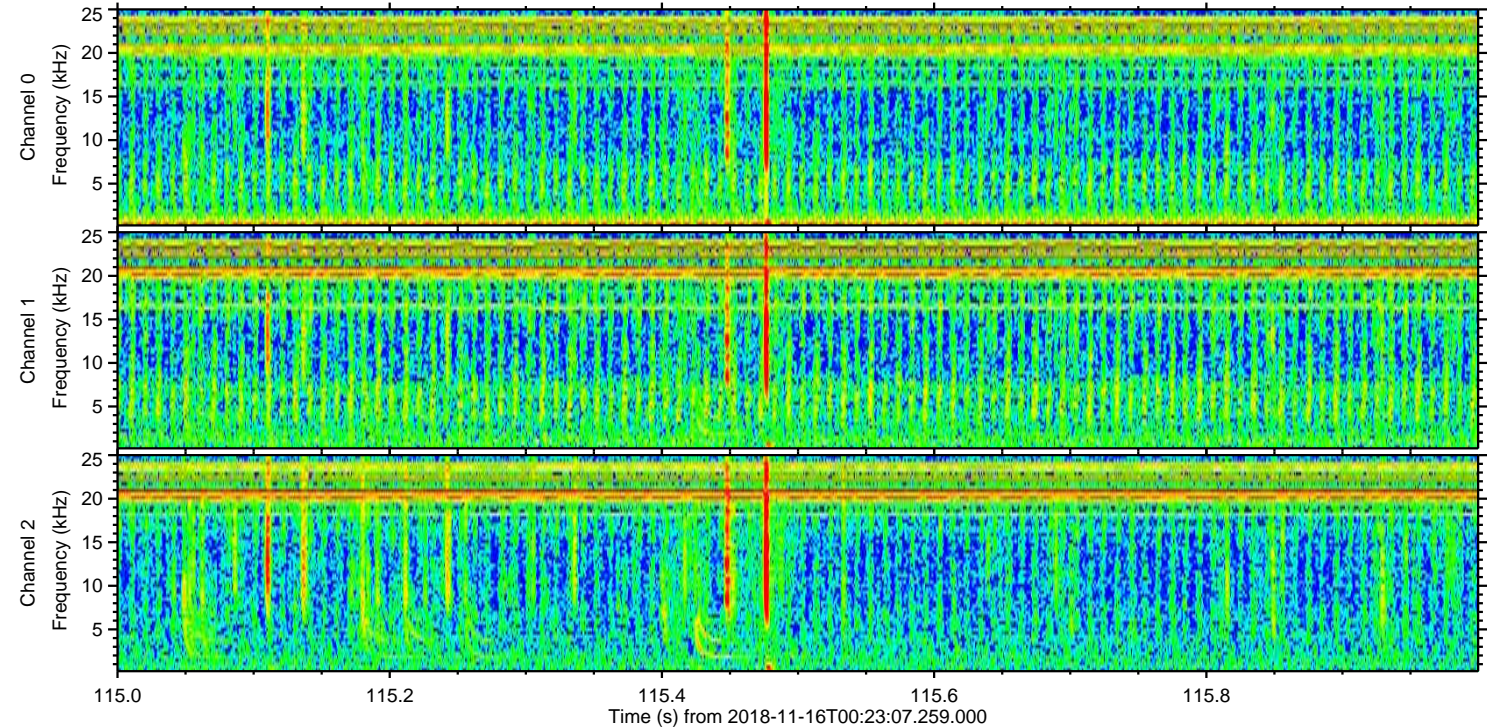
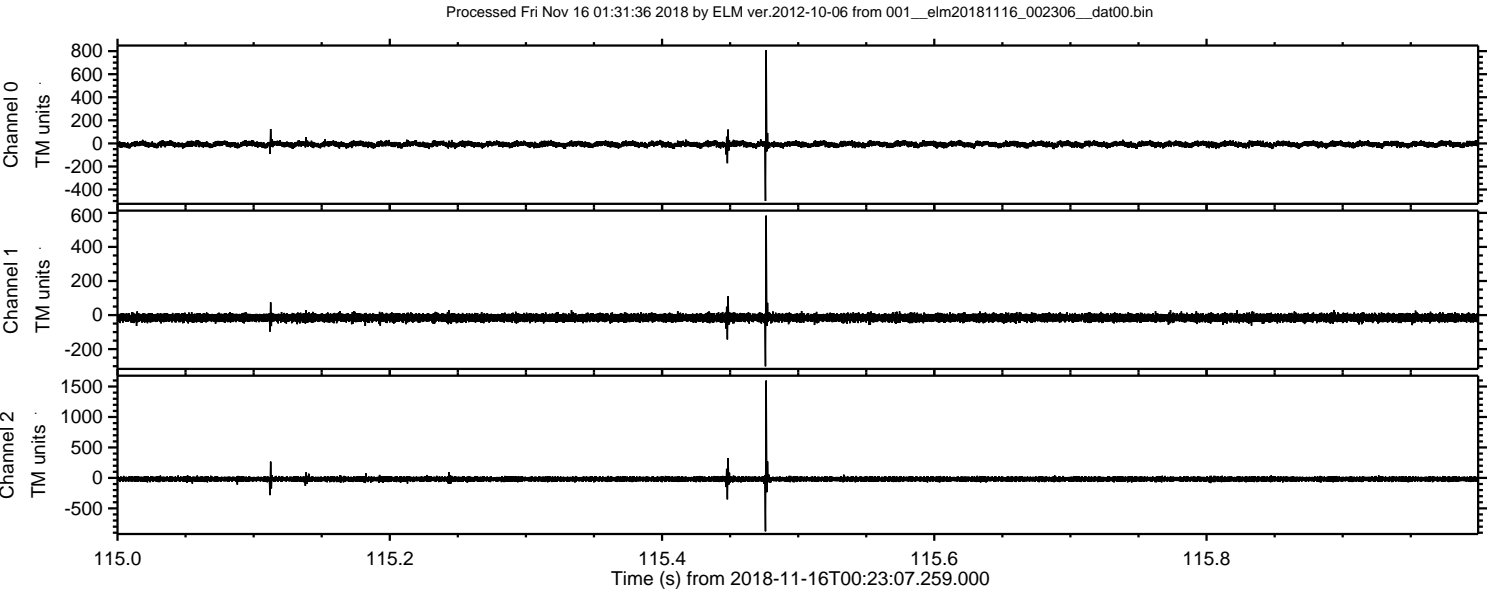
Processed Fri Nov 16 01:31:34 2018 by ELM ver.2012-10-06 from 001__elm20181116_002306__dat00.bin



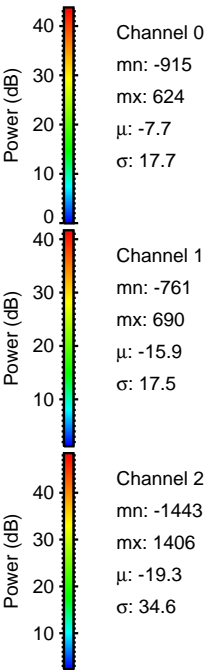
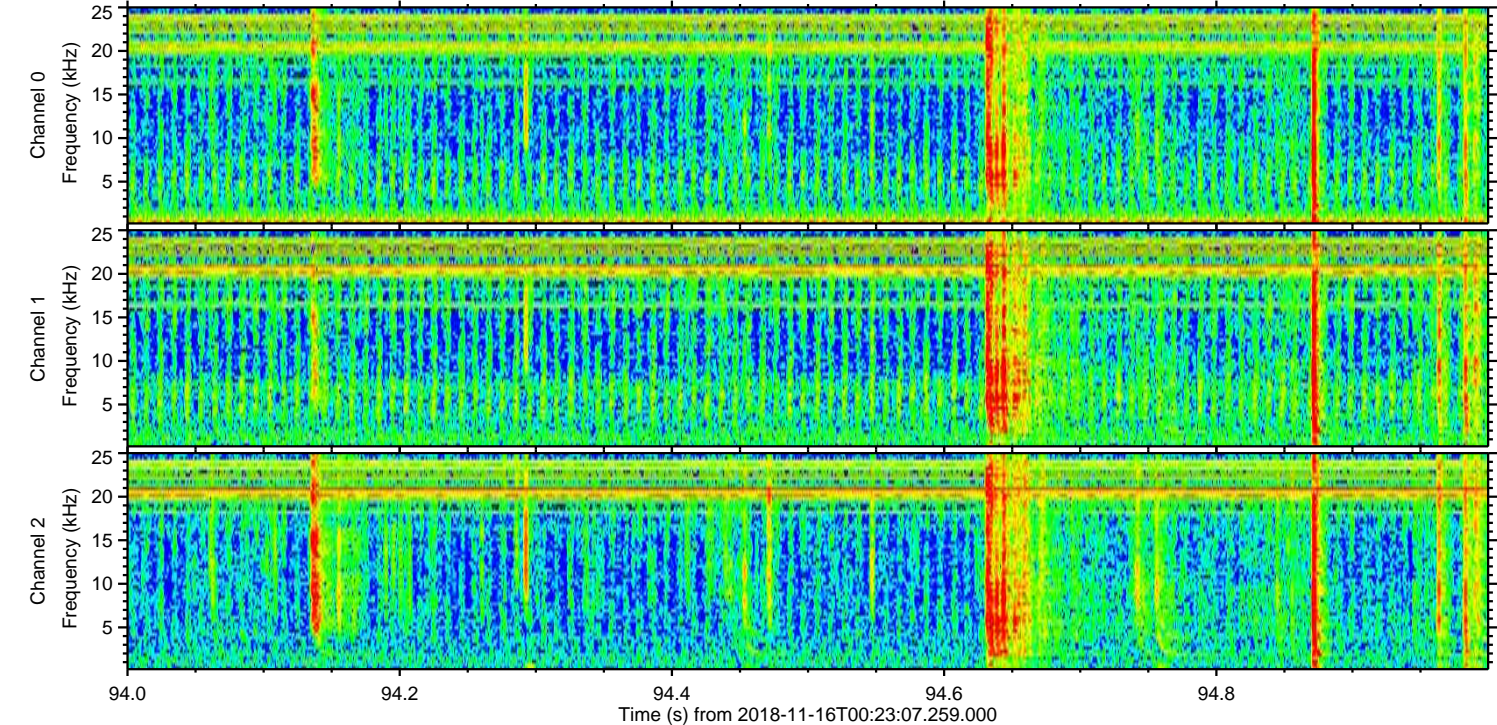
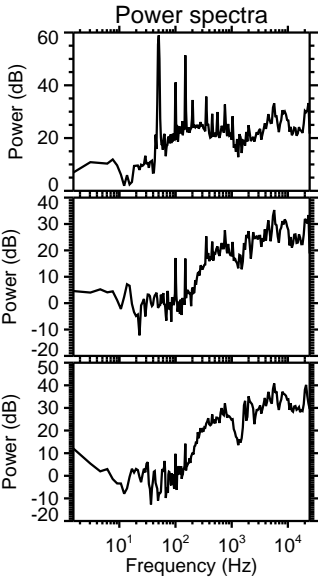
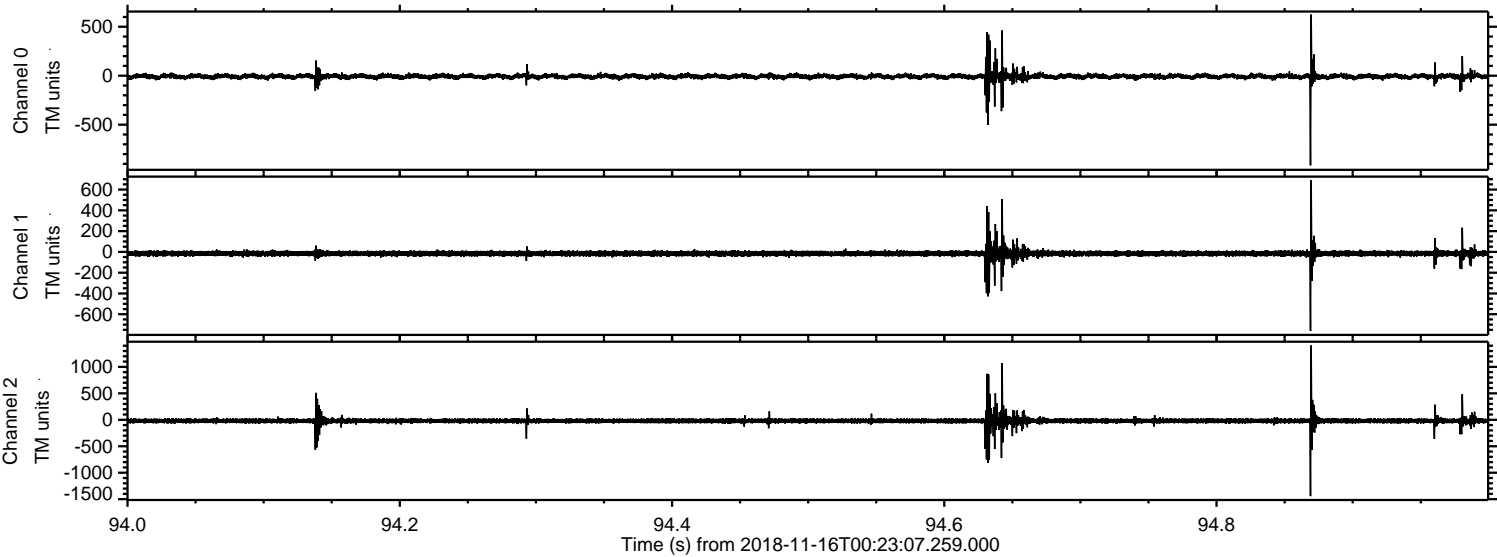
Processed Fri Nov 16 01:31:35 2018 by ELM ver.2012-10-06 from 001__elm20181116_002306__dat00.bin



ELMAVAN 3D WAVEFORMS (Measured data sampled at 50 kHz) 51000 packets of 144 samples from 2018-11-16T00:23:07.259.000. Part 116/147



Processed Fri Nov 16 01:31:37 2018 by ELM ver.2012-10-06 from 001__elm20181116_002306__dat00.bin



Channel 0
mn: -915
mx: 624
 μ : -7.7
 σ : 17.7

Channel 1
mn: -761
mx: 690
 μ : -15.9
 σ : 17.5

Channel 2
mn: -1443
mx: 1406
 μ : -19.3
 σ : 34.6

Processed Fri Nov 16 01:31:38 2018 by ELM ver.2012-10-06 from 001__elm20181116_002306__dat00.bin

