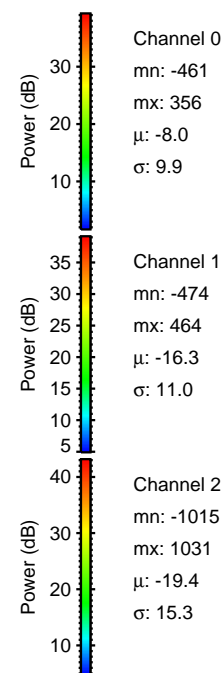
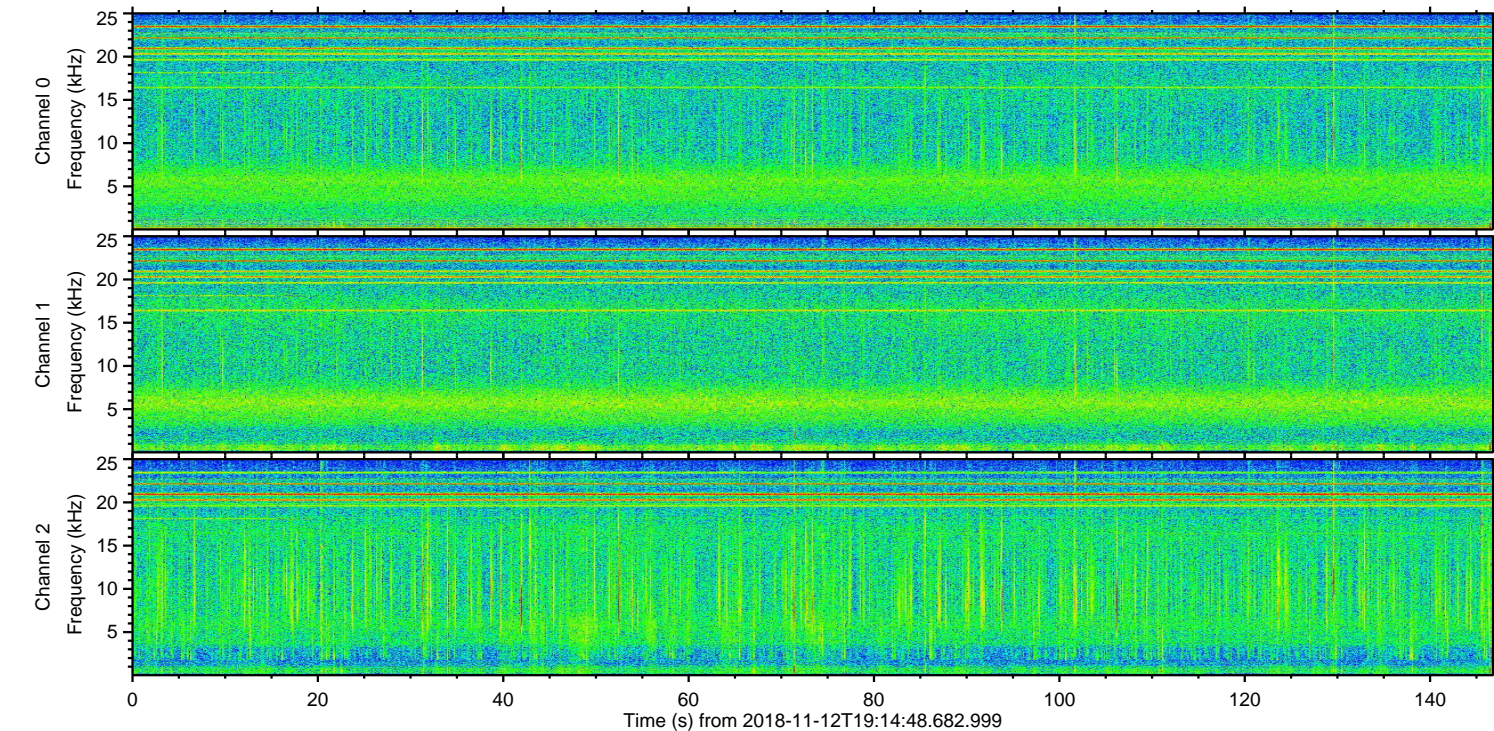
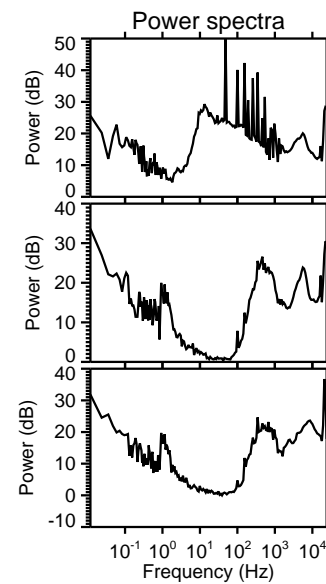
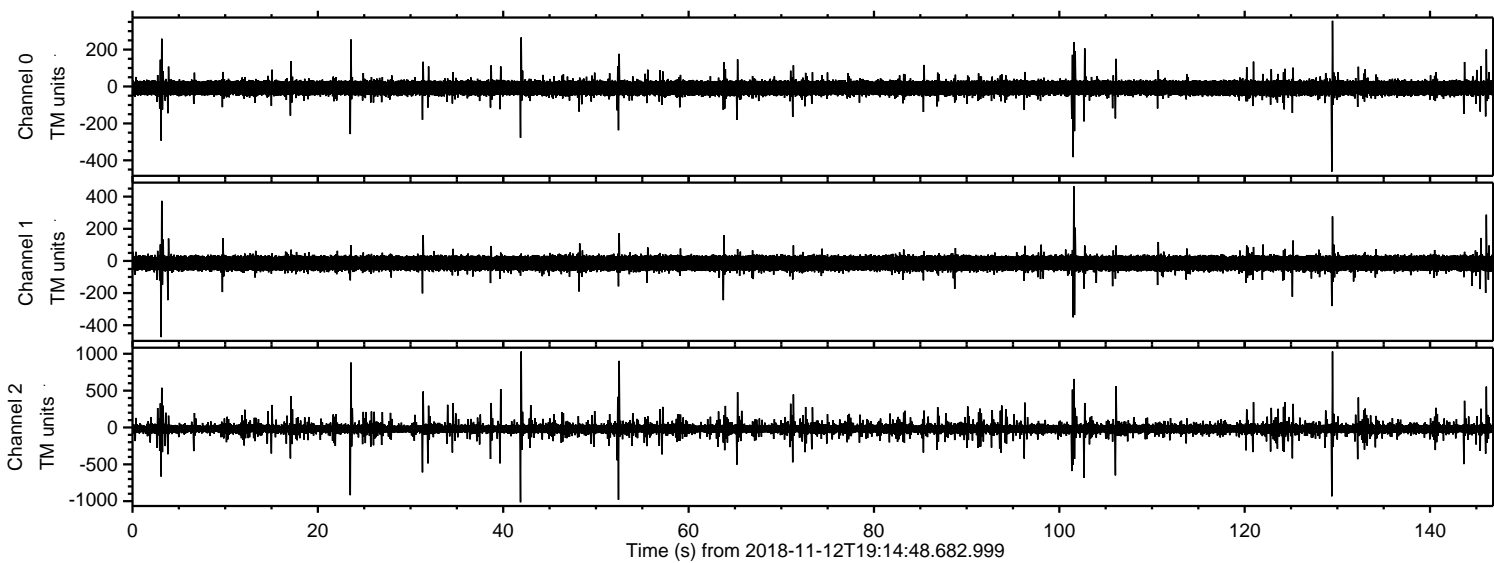


ELMAVAN 3D WAVEFORMS (Measured data sampled at 50 kHz) 51000 packets of 144 samples from 2018-11-12T19:14:48.682.999.

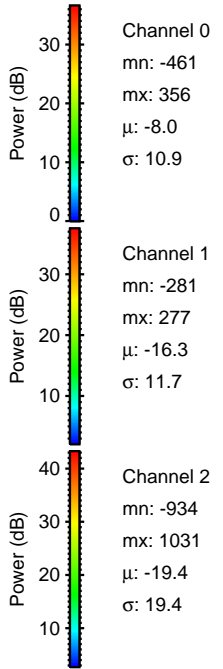
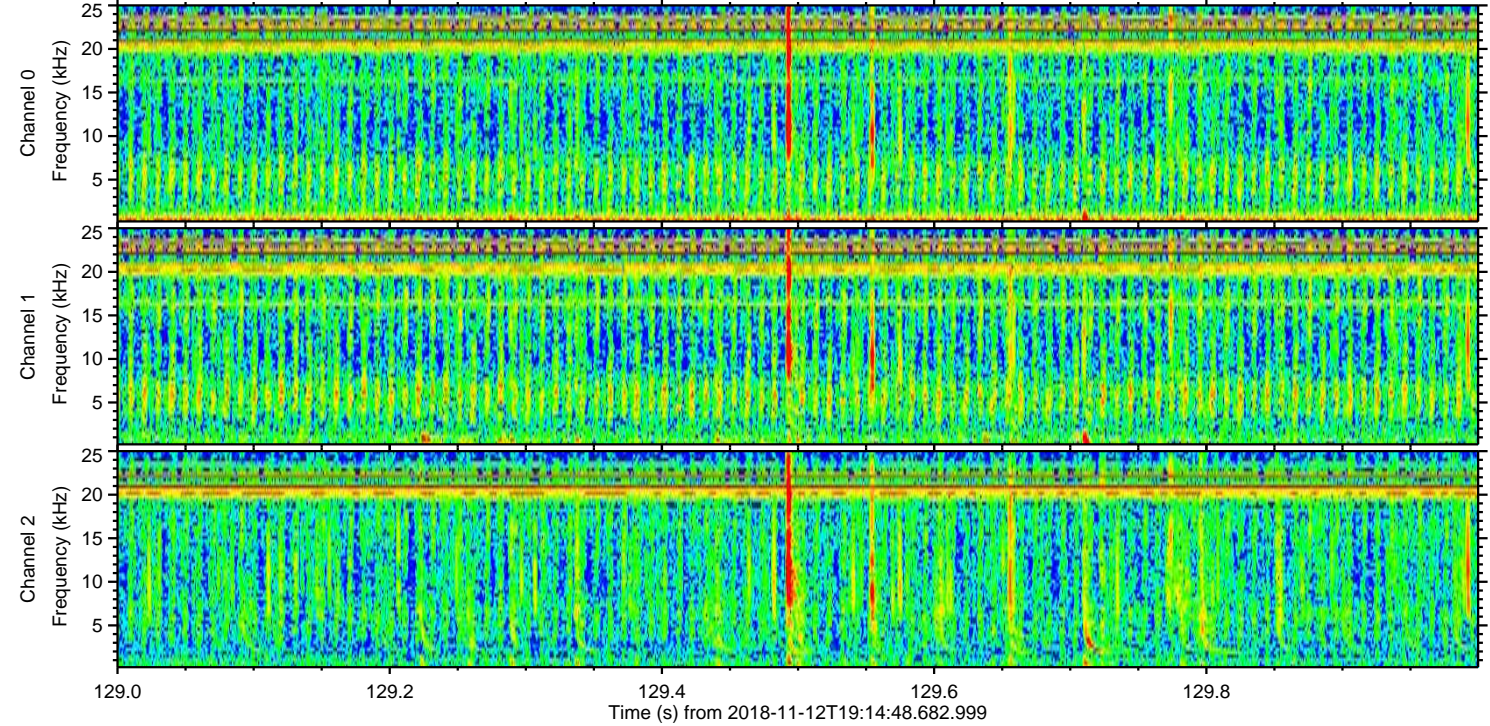
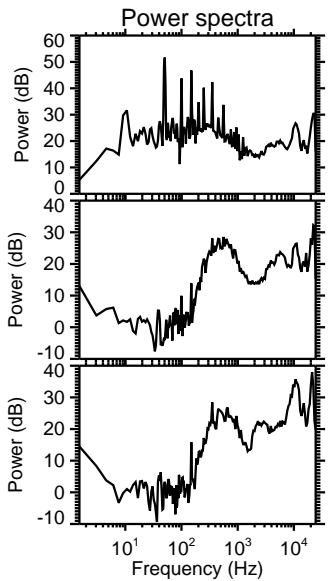
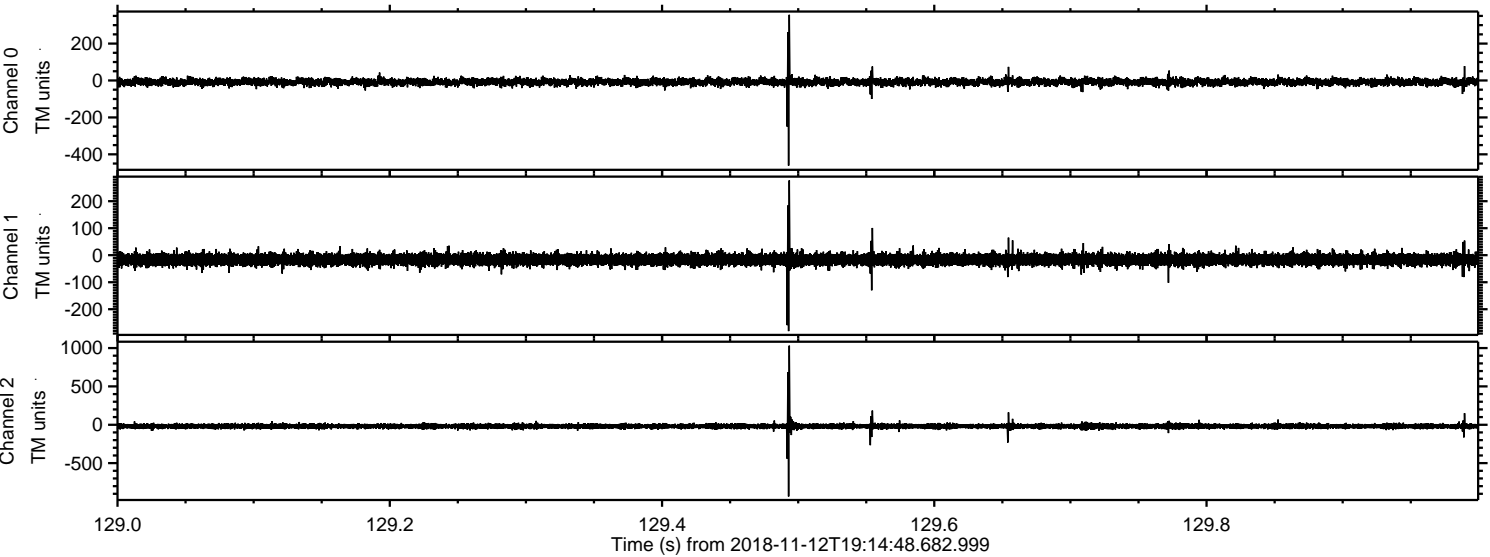
Processed Mon Nov 12 20:23:09 2018 by ELM ver.2012-10-06 from 001\_\_elm20181112\_191447\_\_dat00.bin





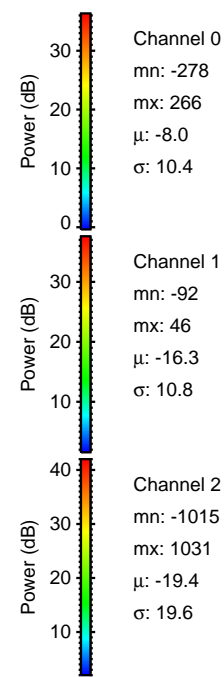
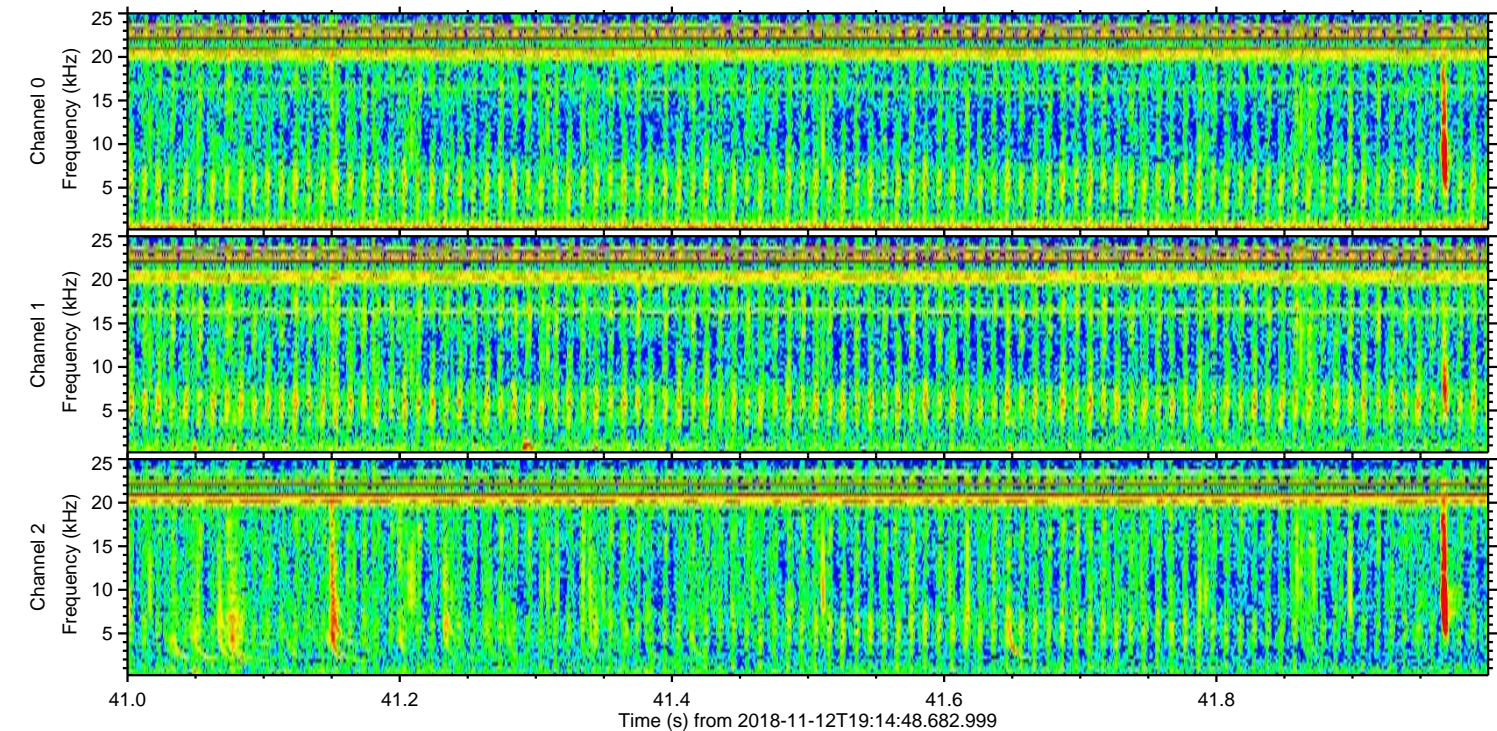
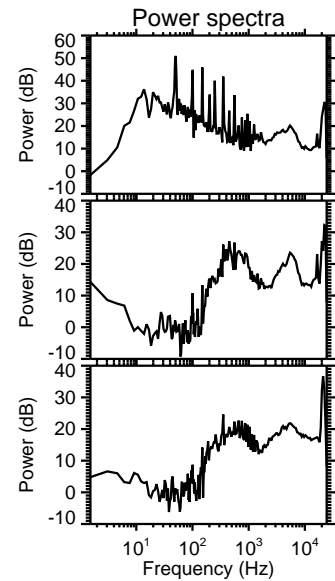
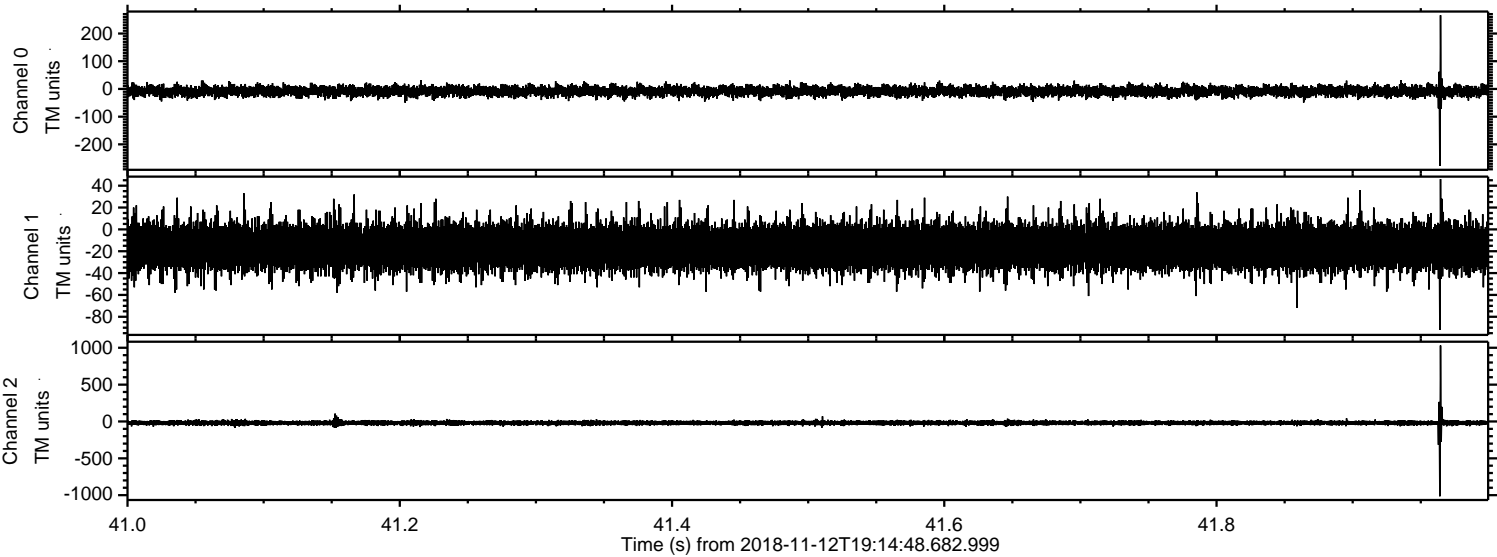
ELMAVAN 3D WAVEFORMS (Measured data sampled at 50 kHz) 51000 packets of 144 samples from 2018-11-12T19:14:48.682.999. Part 130/147

Processed Mon Nov 12 20:23:15 2018 by ELM ver.2012-10-06 from 001\_\_elm20181112\_191447\_\_dat00.bin



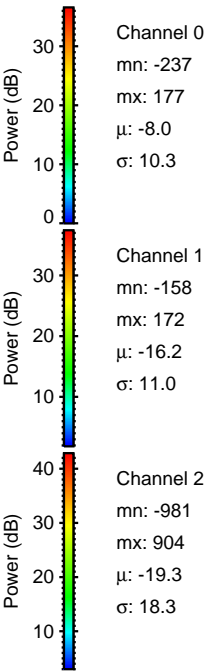
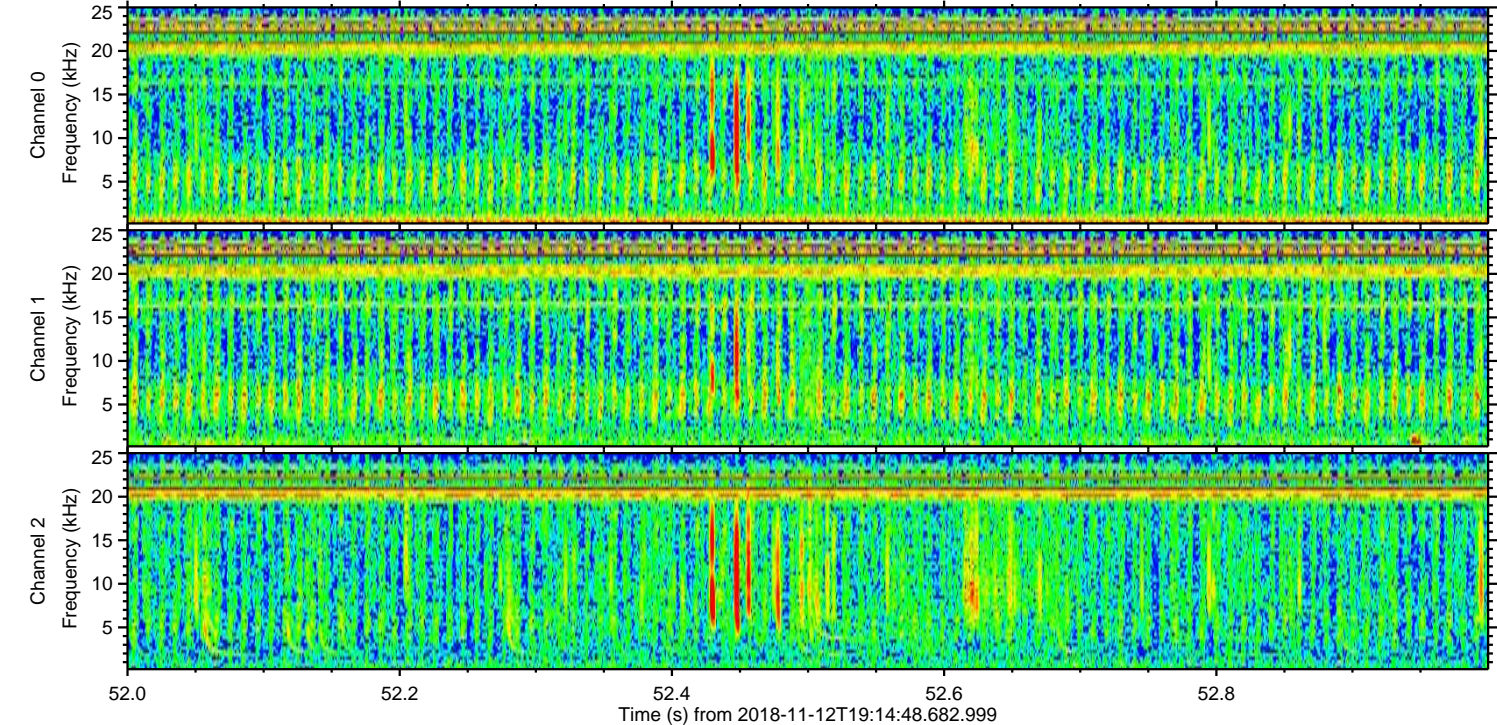
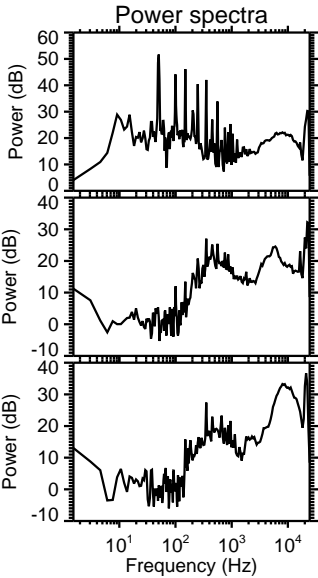
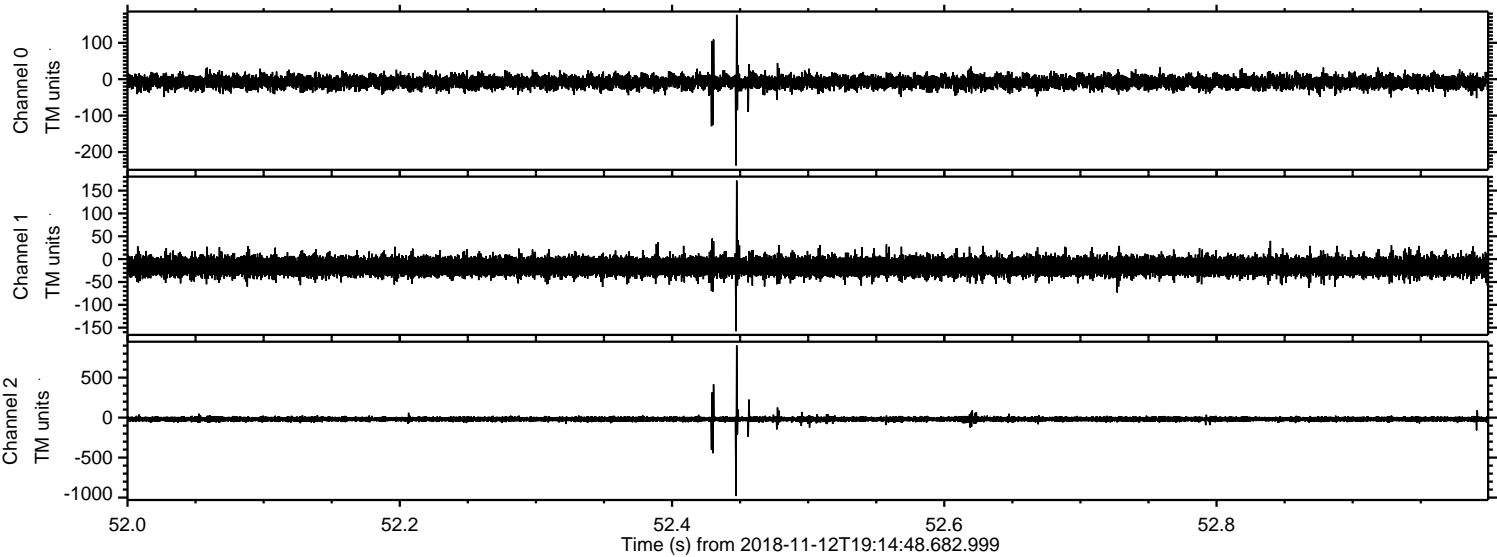


Processed Mon Nov 12 20:23:16 2018 by ELM ver.2012-10-06 from 001\_\_elm20181112\_191447\_\_dat00.bin



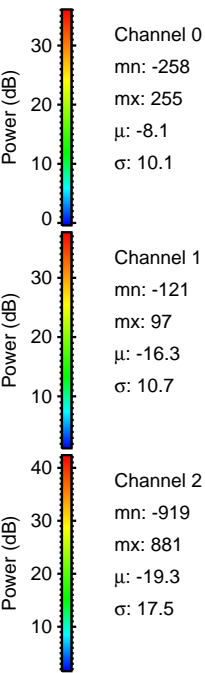
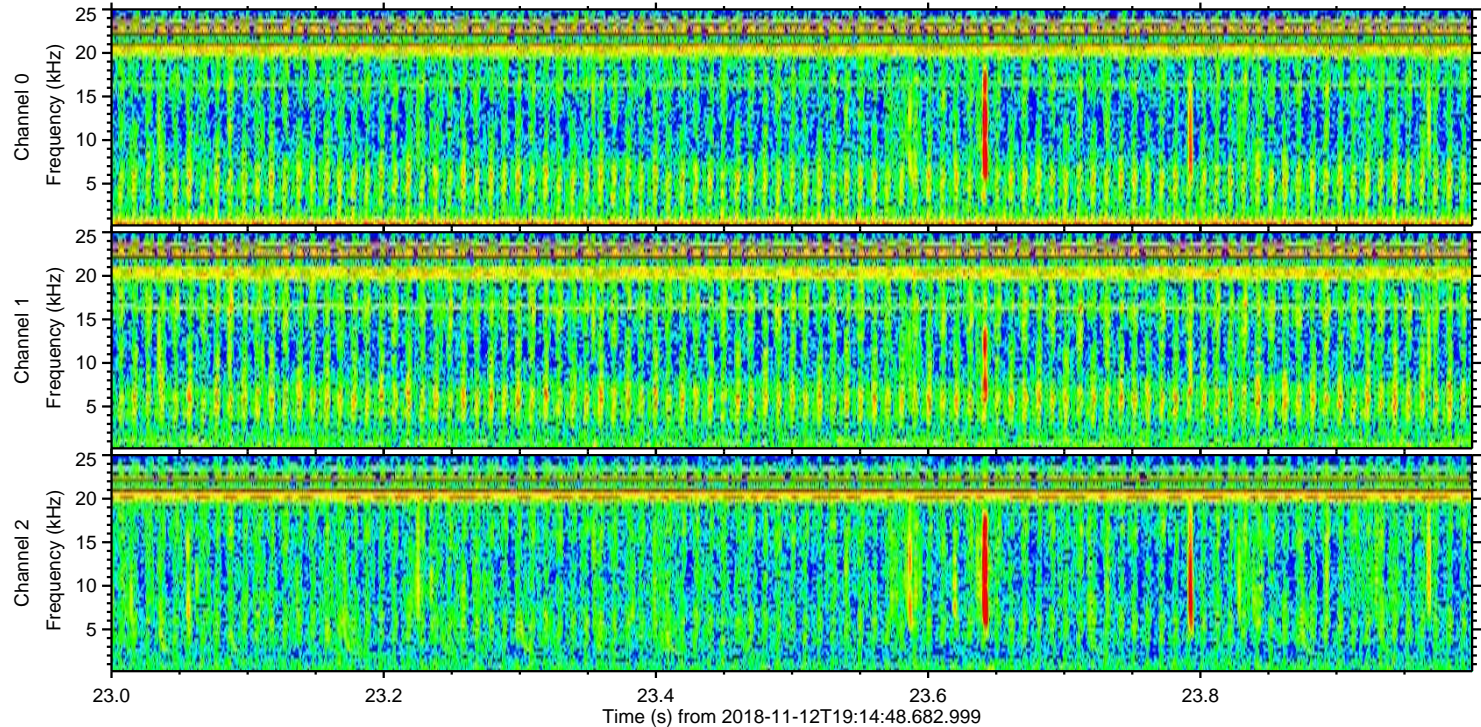
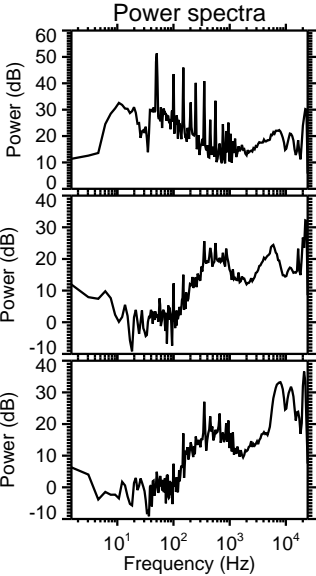
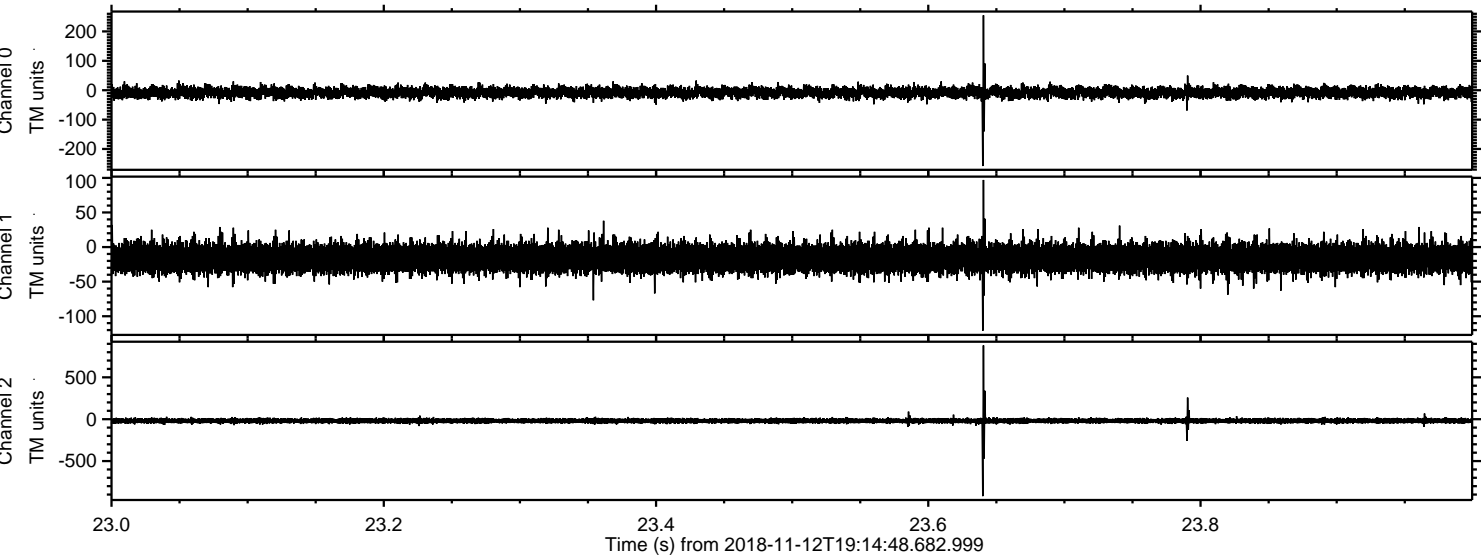


Processed Mon Nov 12 20:23:17 2018 by ELM ver.2012-10-06 from 001\_\_elm20181112\_191447\_\_dat00.bin



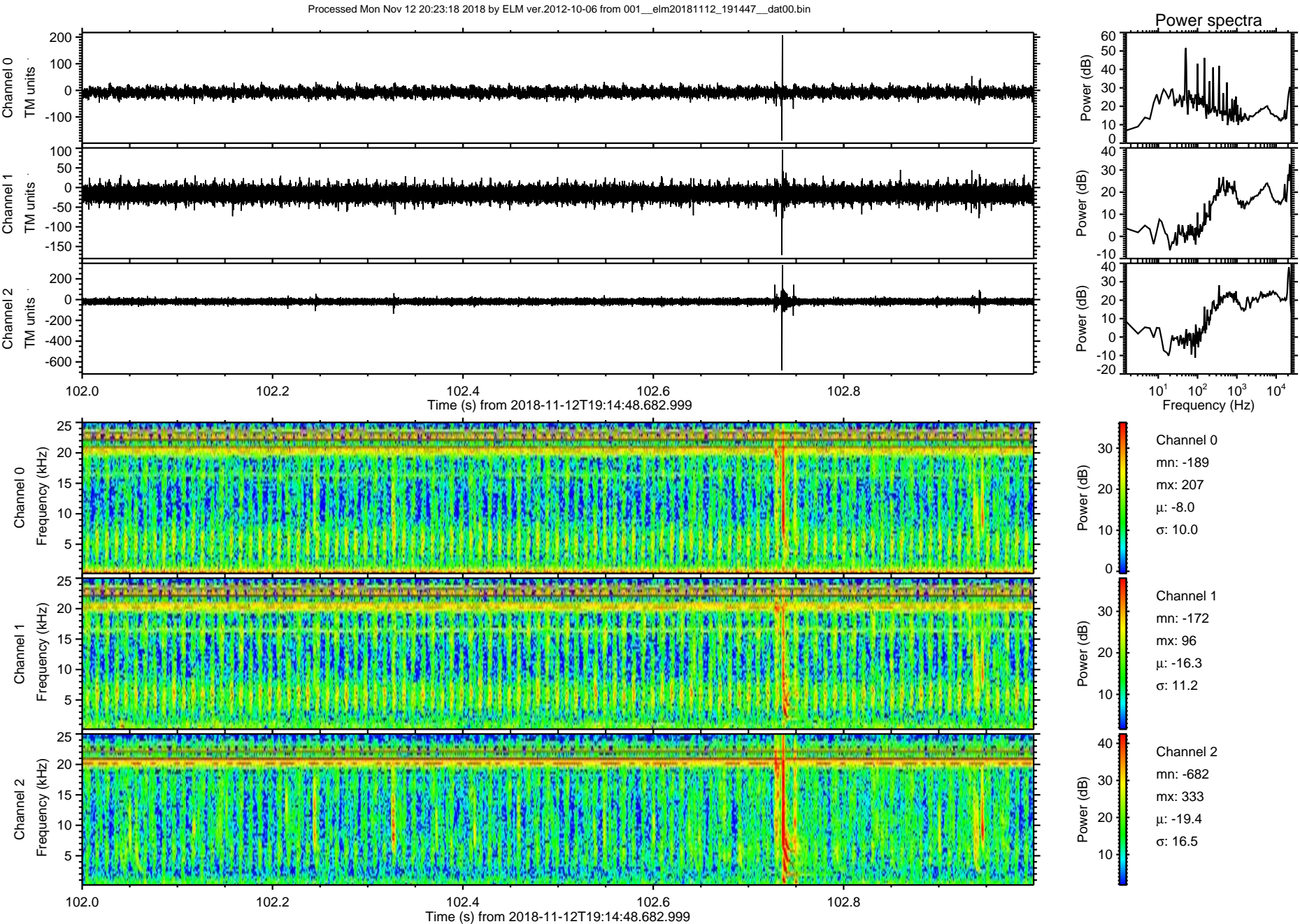


Processed Mon Nov 12 20:23:18 2018 by ELM ver.2012-10-06 from 001\_\_elm20181112\_191447\_\_dat00.bin



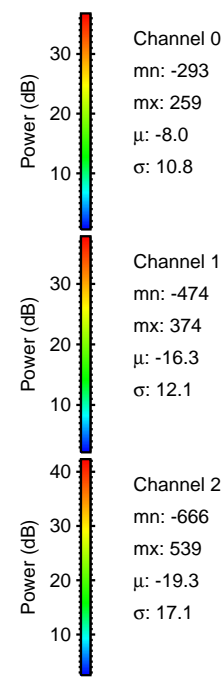
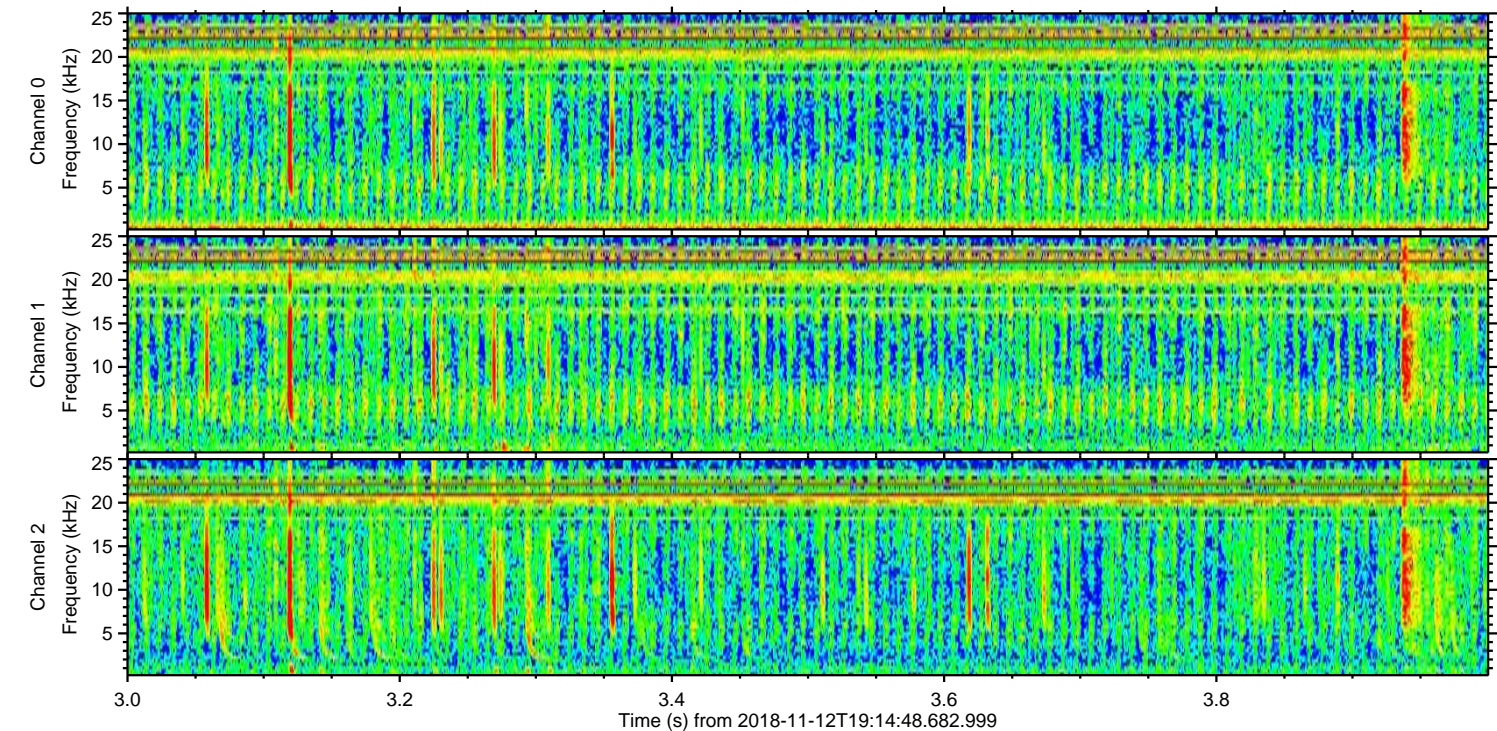
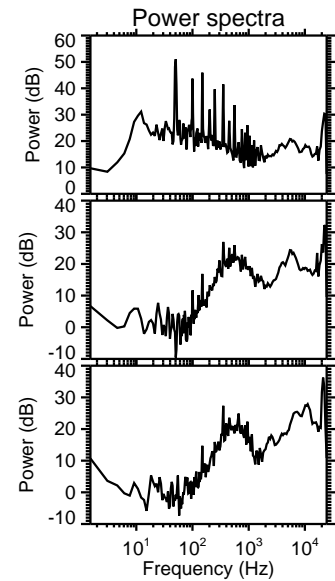
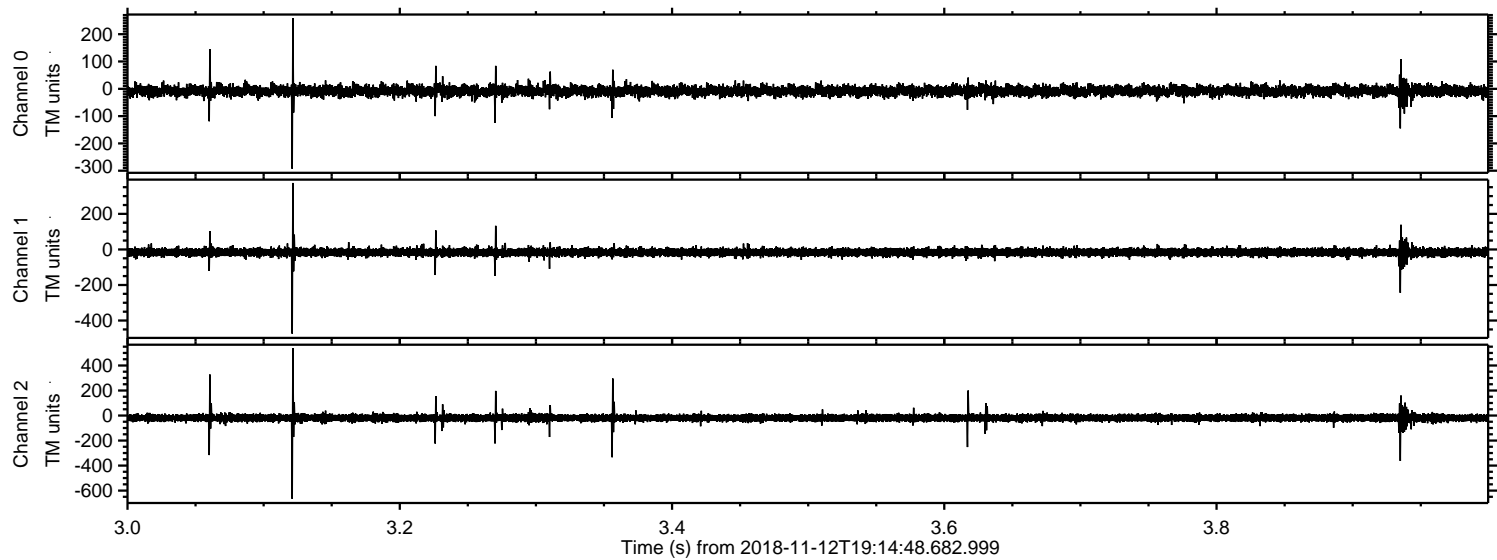


ELMAVAN 3D WAVEFORMS (Measured data sampled at 50 kHz) 51000 packets of 144 samples from 2018-11-12T19:14:48.682.999. Part 103/147



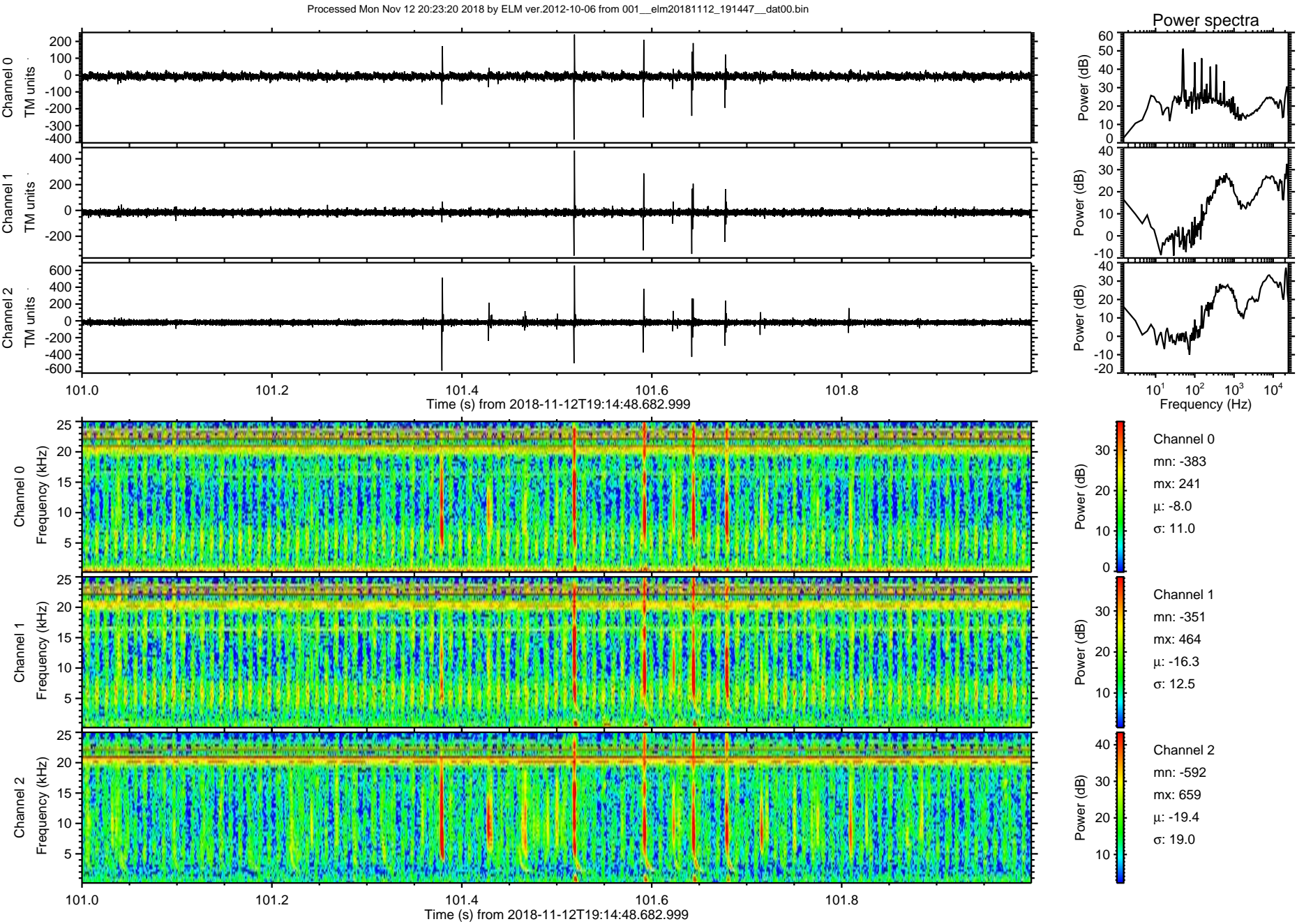


Processed Mon Nov 12 20:23:19 2018 by ELM ver.2012-10-06 from 001\_\_elm20181112\_191447\_\_dat00.bin



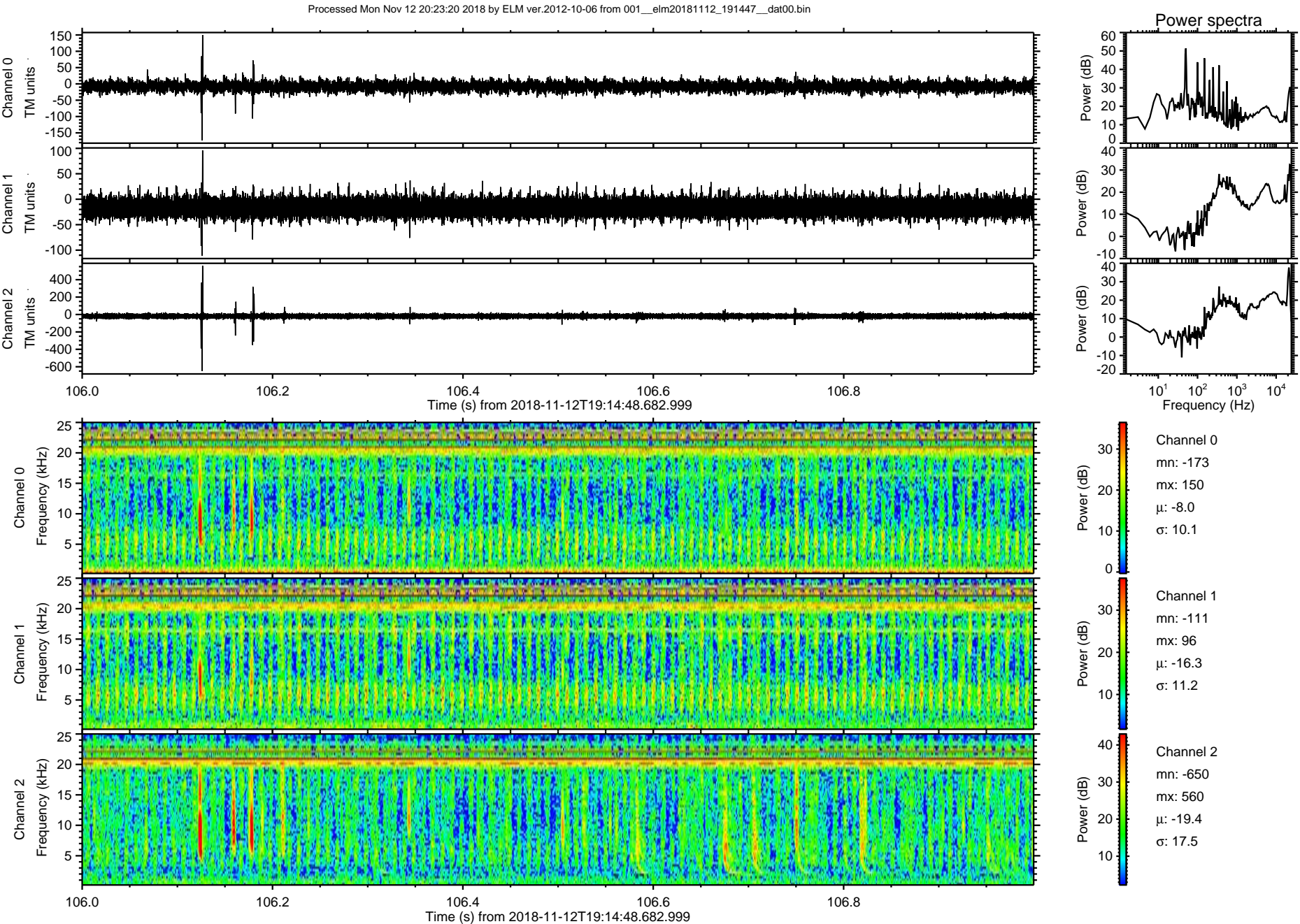


ELMAVAN 3D WAVEFORMS (Measured data sampled at 50 kHz) 51000 packets of 144 samples from 2018-11-12T19:14:48.682.999. Part 102/147



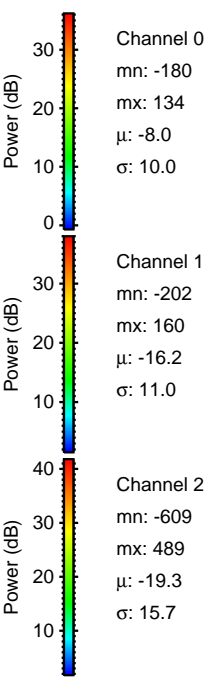
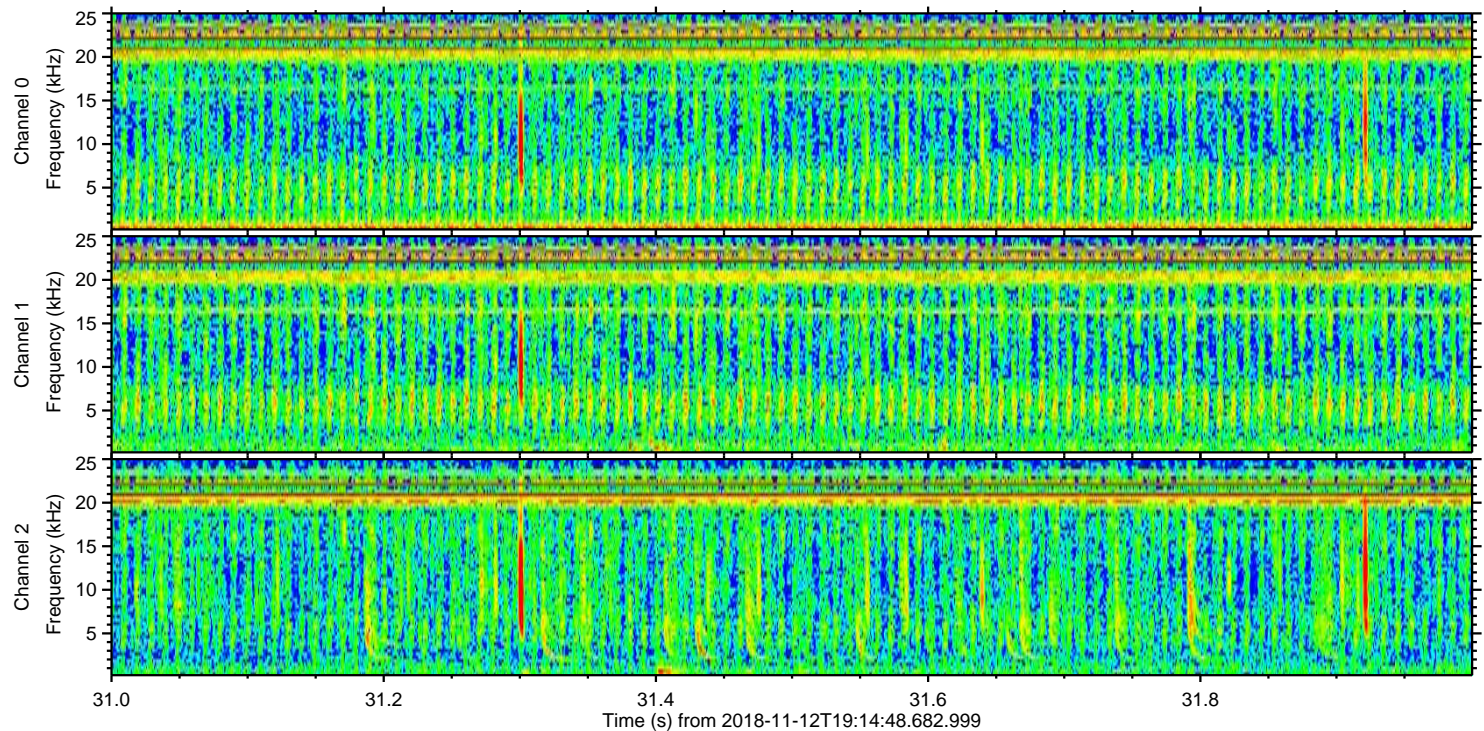
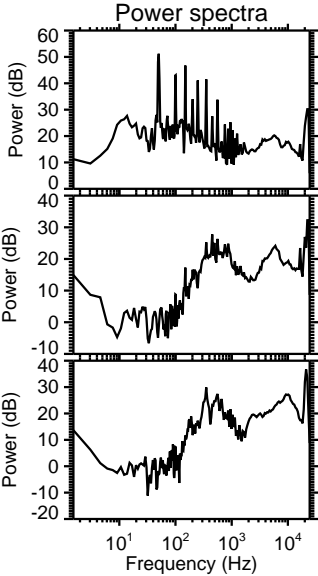
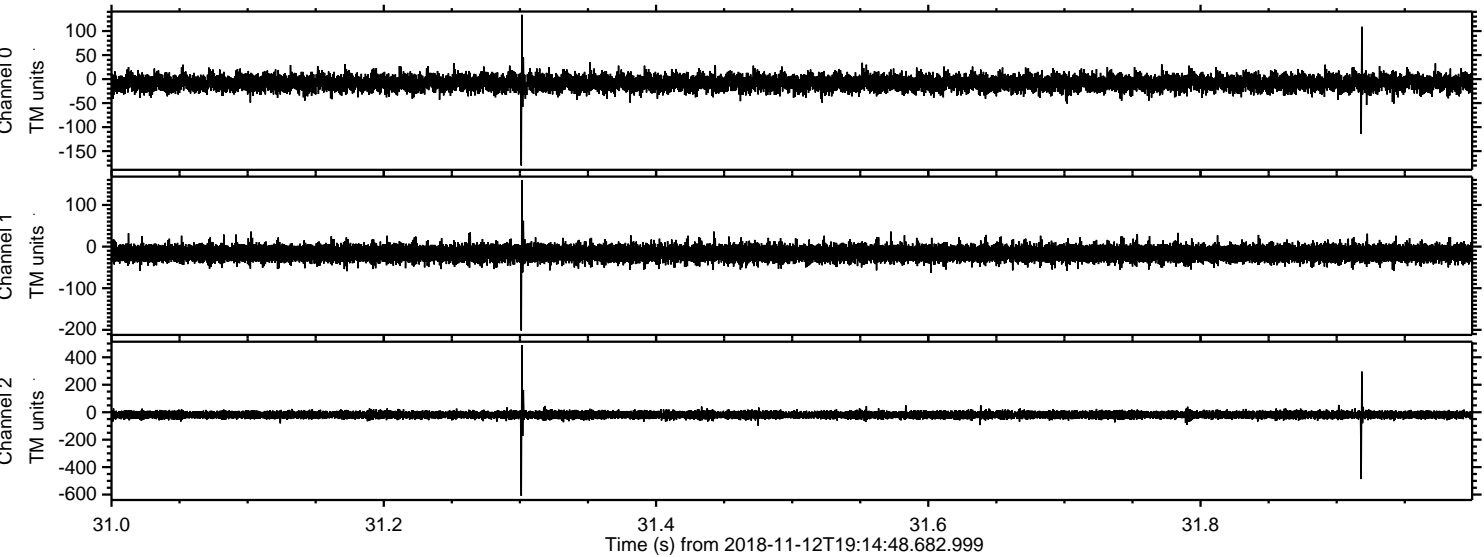


ELMAVAN 3D WAVEFORMS (Measured data sampled at 50 kHz) 51000 packets of 144 samples from 2018-11-12T19:14:48.682.999. Part 107/147





Processed Mon Nov 12 20:23:21 2018 by ELM ver.2012-10-06 from 001\_\_elm20181112\_191447\_\_dat00.bin





Processed Mon Nov 12 20:23:22 2018 by ELM ver.2012-10-06 from 001\_\_elm20181112\_191447\_\_dat00.bin

