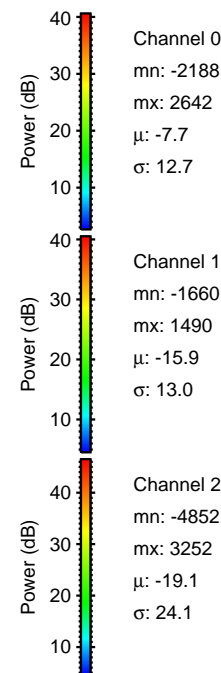
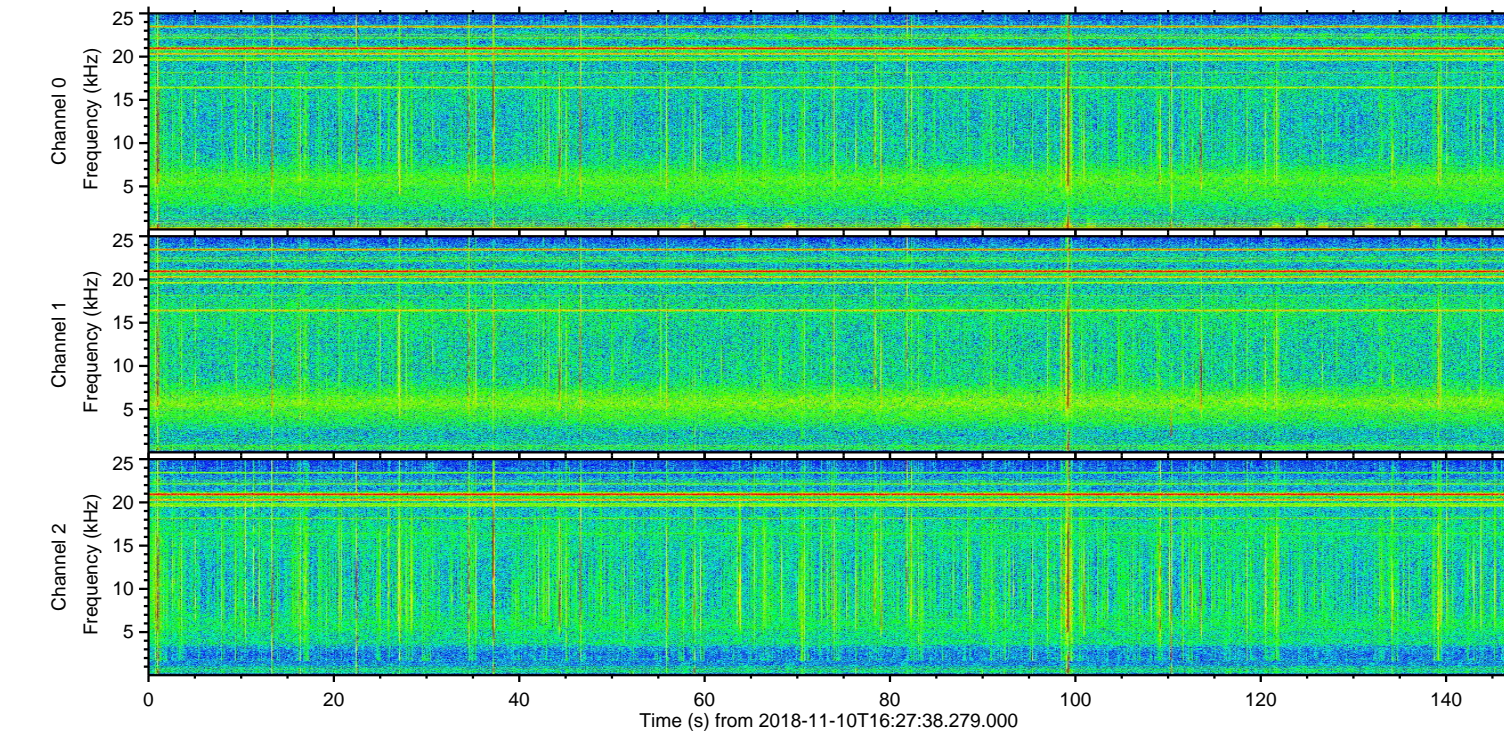
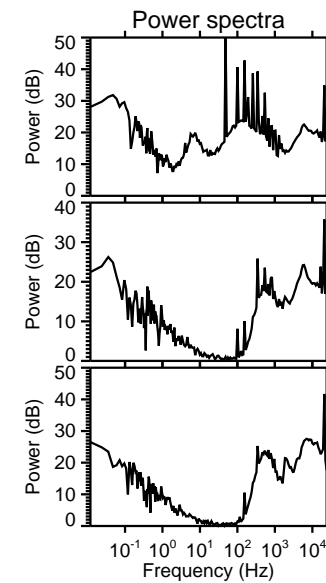
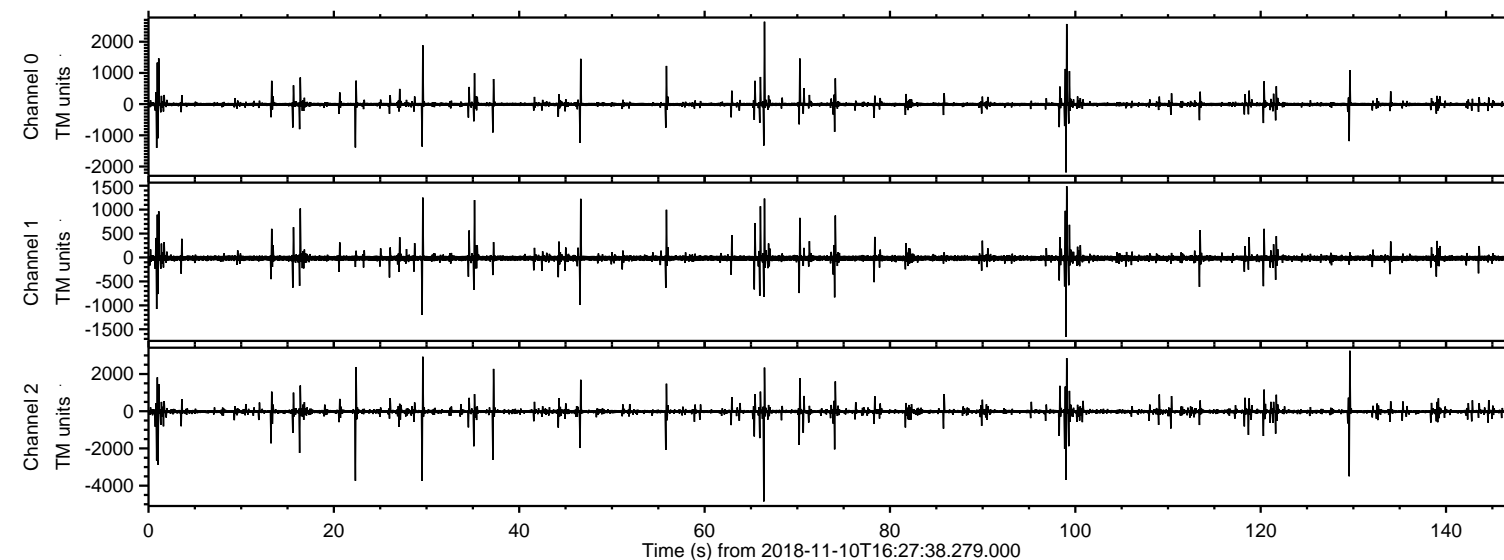
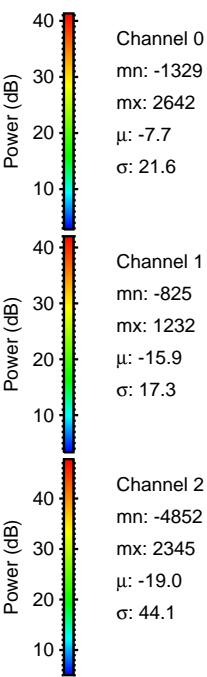
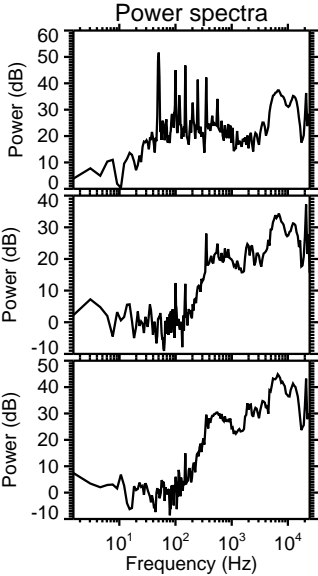
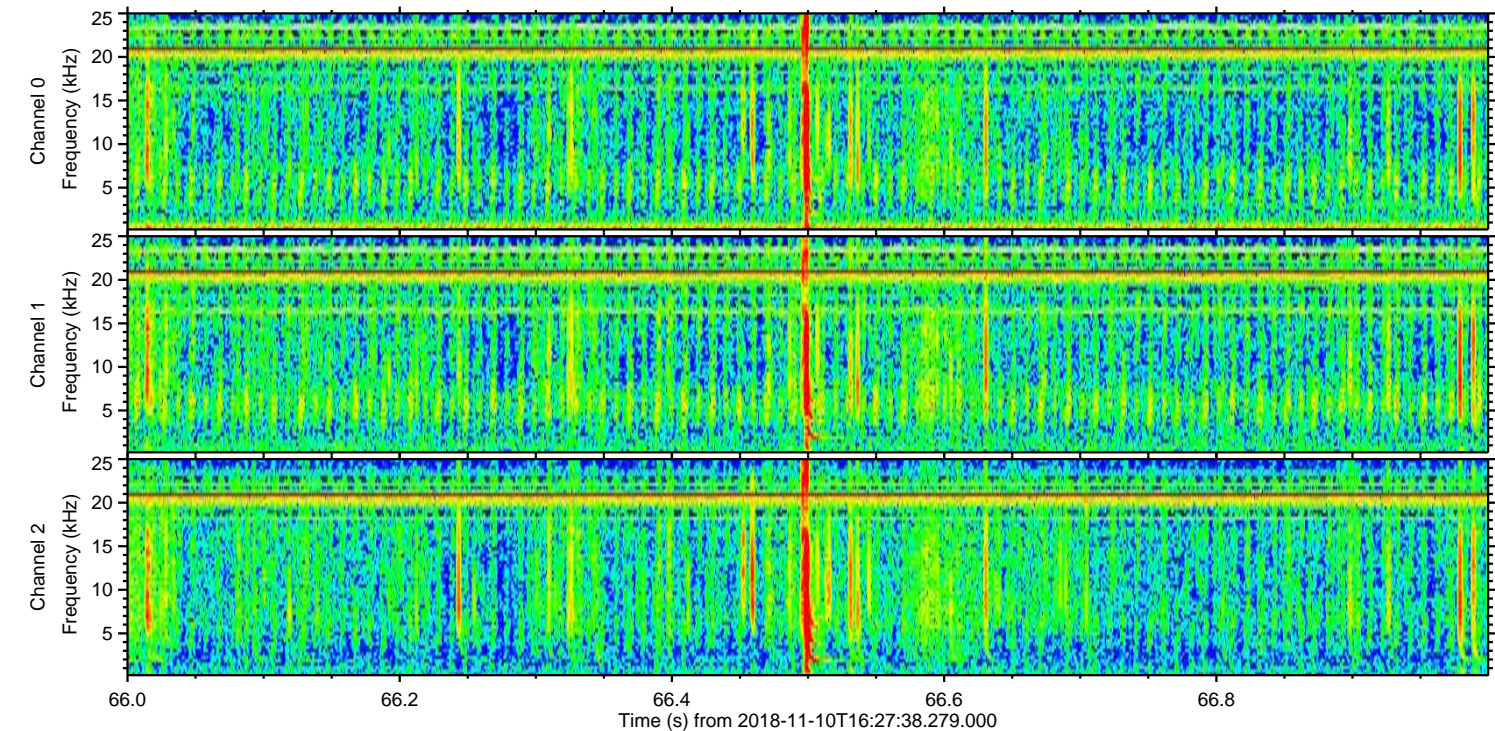
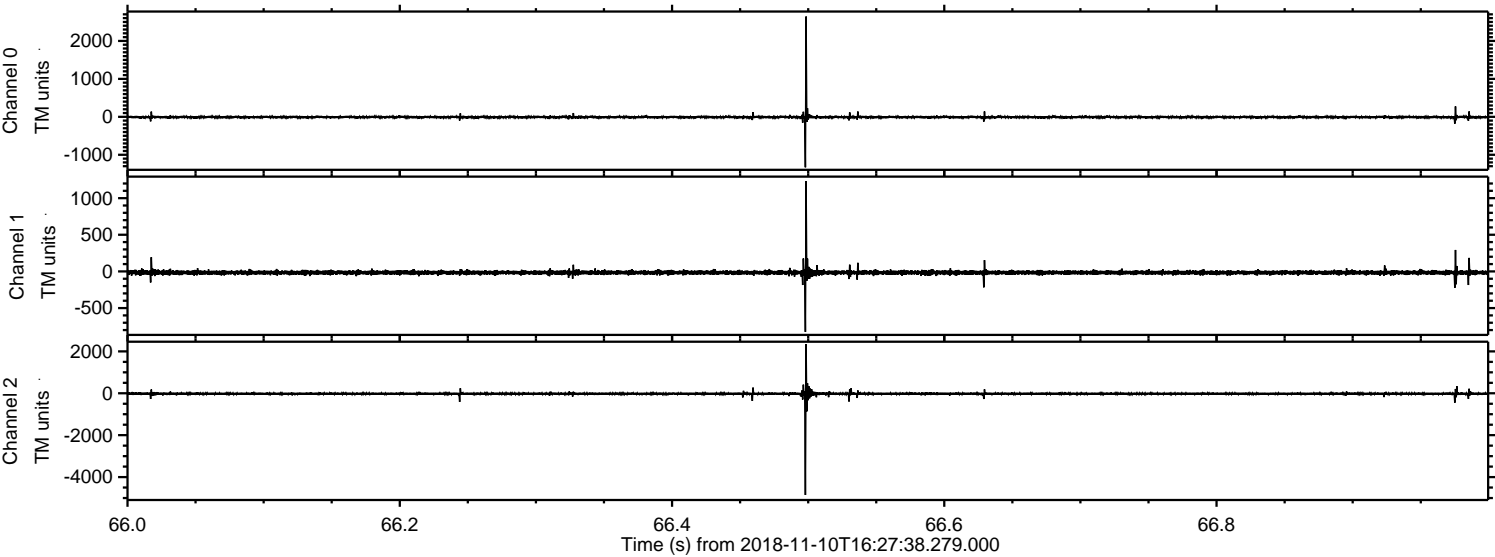


ELMAVAN 3D WAVEFORMS (Measured data sampled at 50 kHz) 51000 packets of 144 samples from 2018-11-10T16:27:38.279.000.

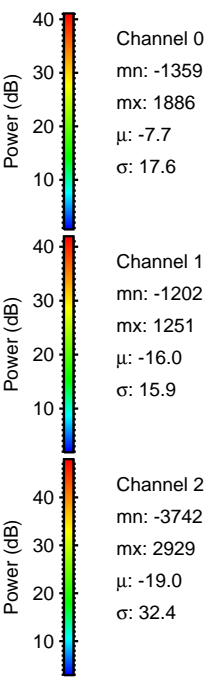
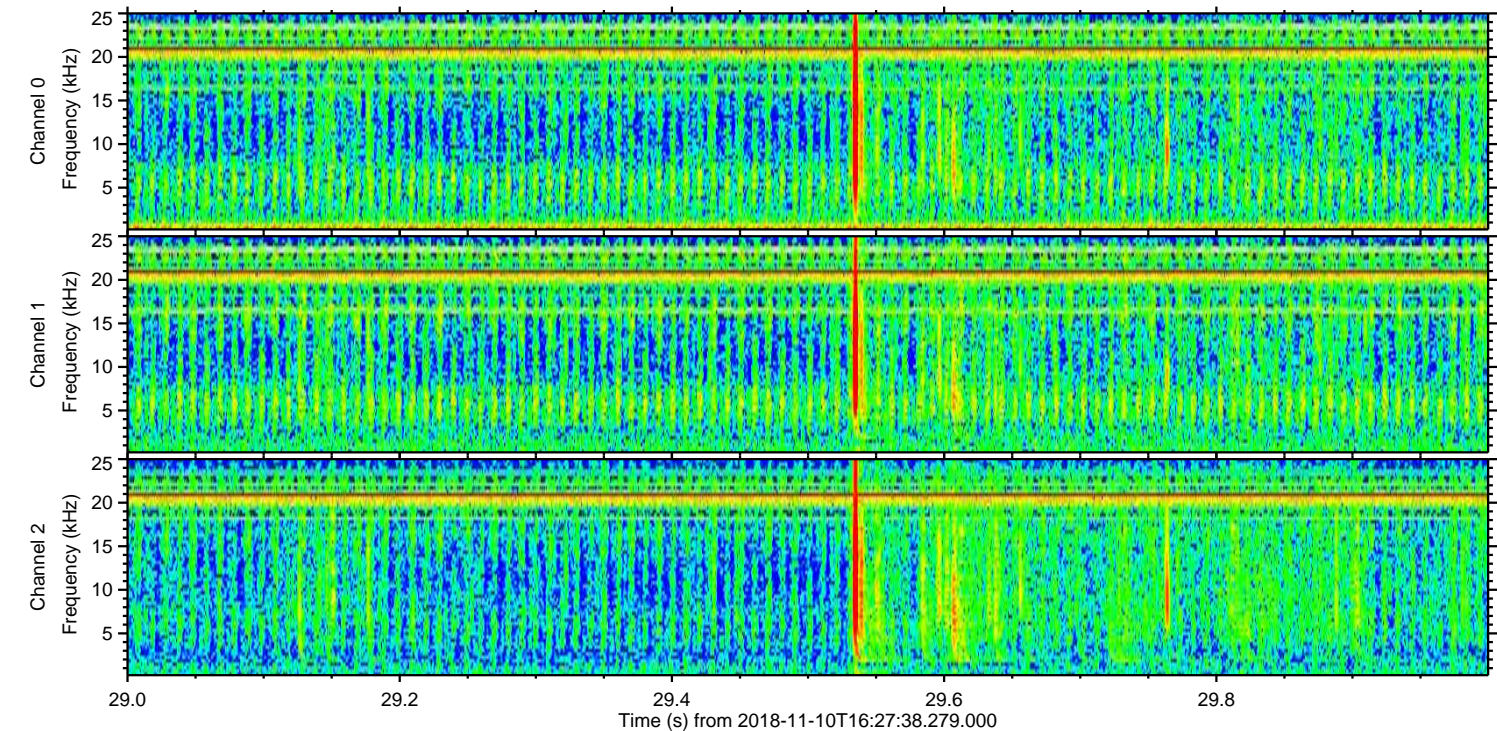
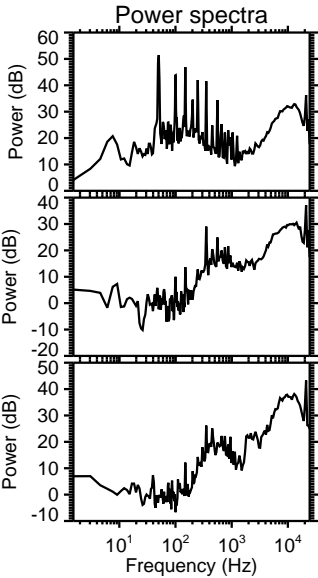
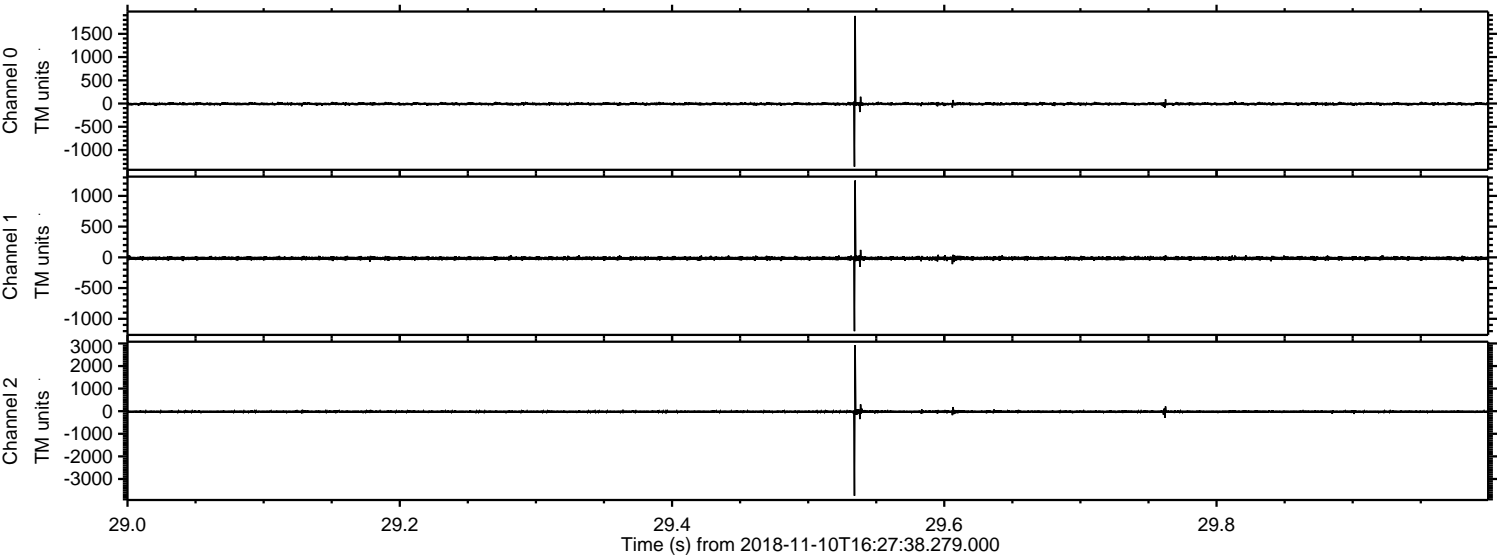
Processed Sat Nov 10 17:35:52 2018 by ELM ver.2012-10-06 from 001__elm20181110_162737__dat00.bin



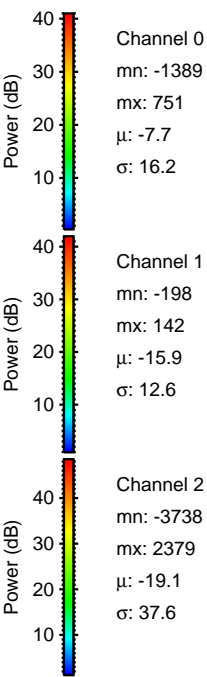
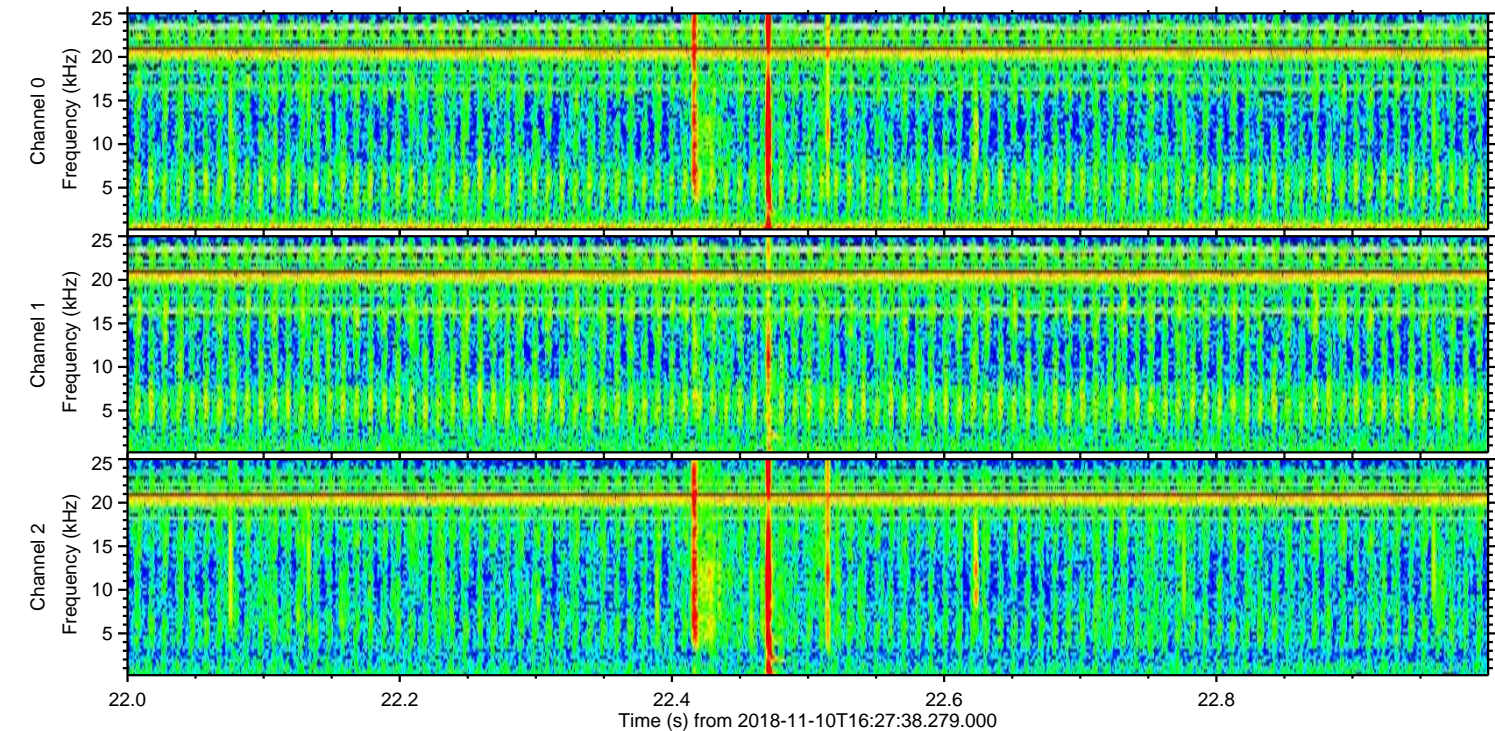
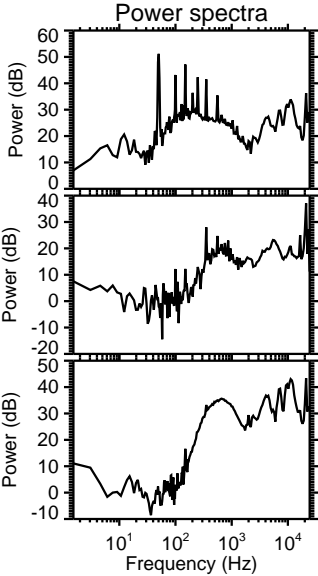
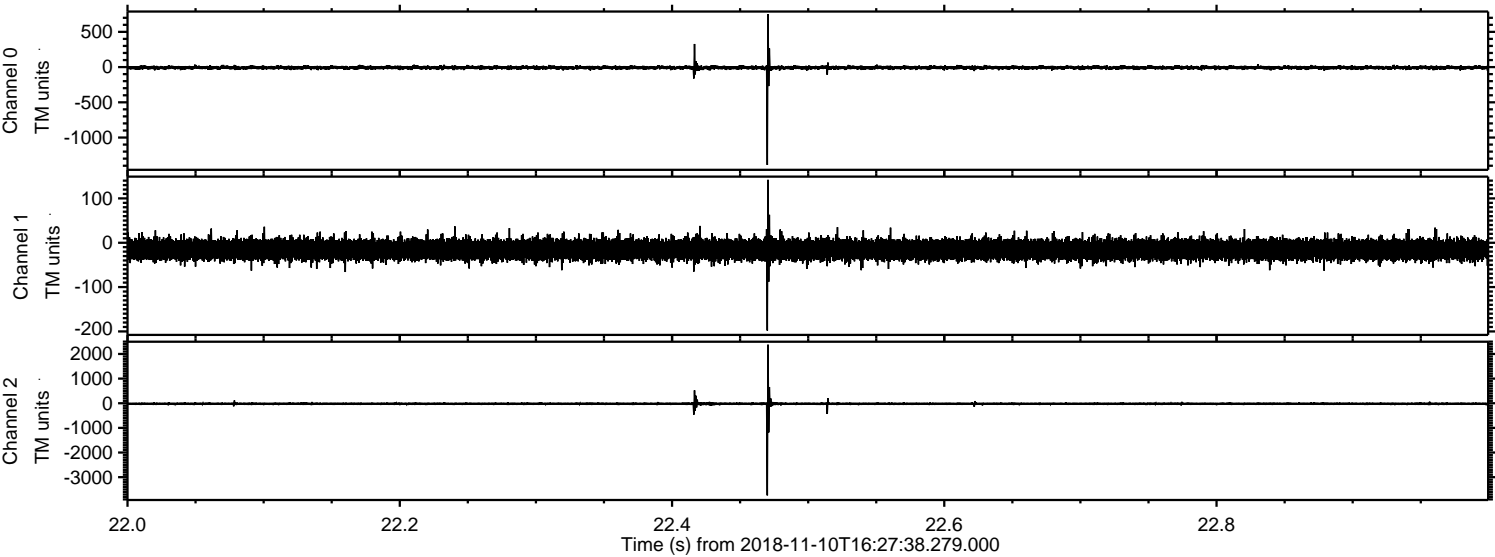
Processed Sat Nov 10 17:36:00 2018 by ELM ver.2012-10-06 from 001__elm20181110_162737__dat00.bin



Processed Sat Nov 10 17:36:01 2018 by ELM ver.2012-10-06 from 001__elm20181110_162737__dat00.bin

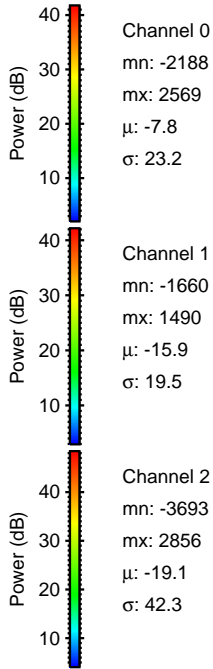
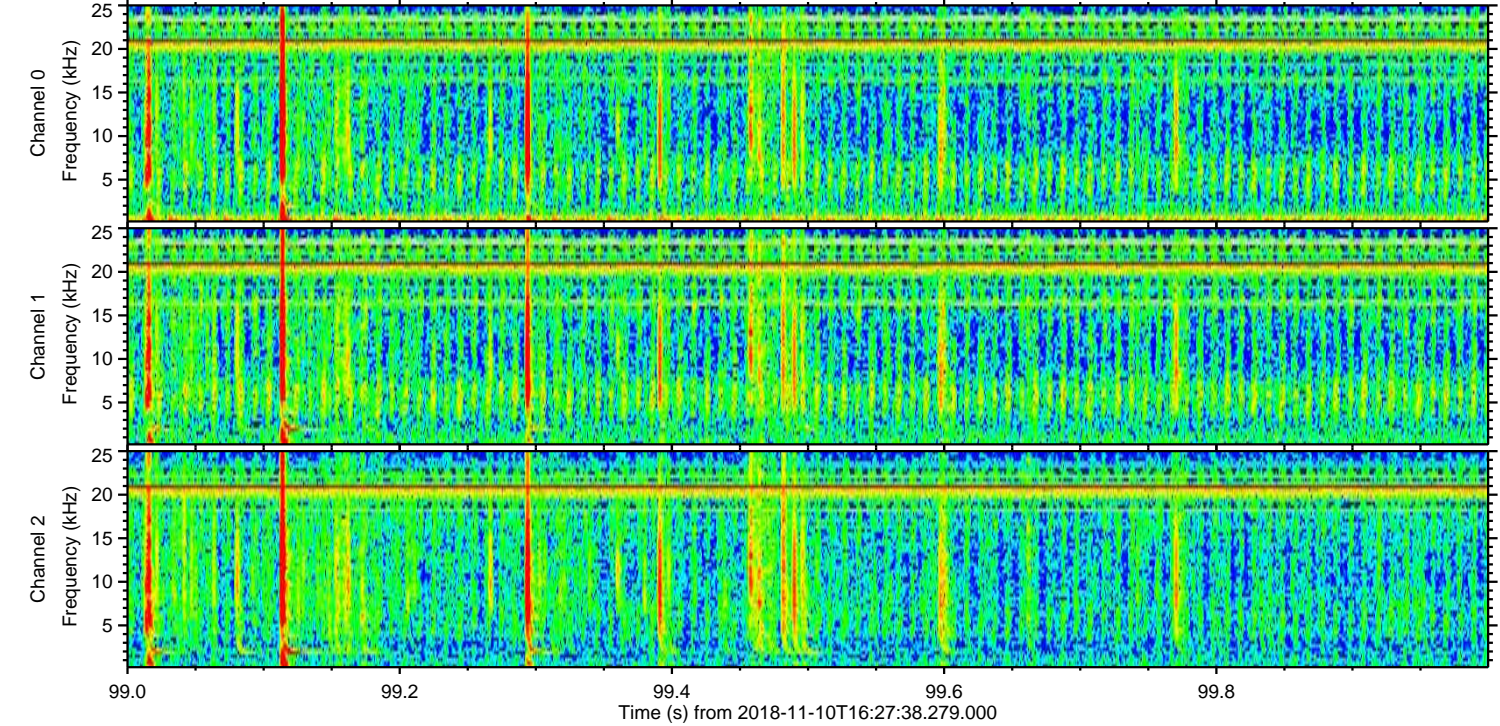
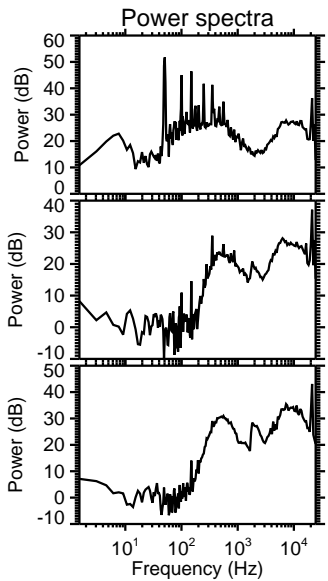
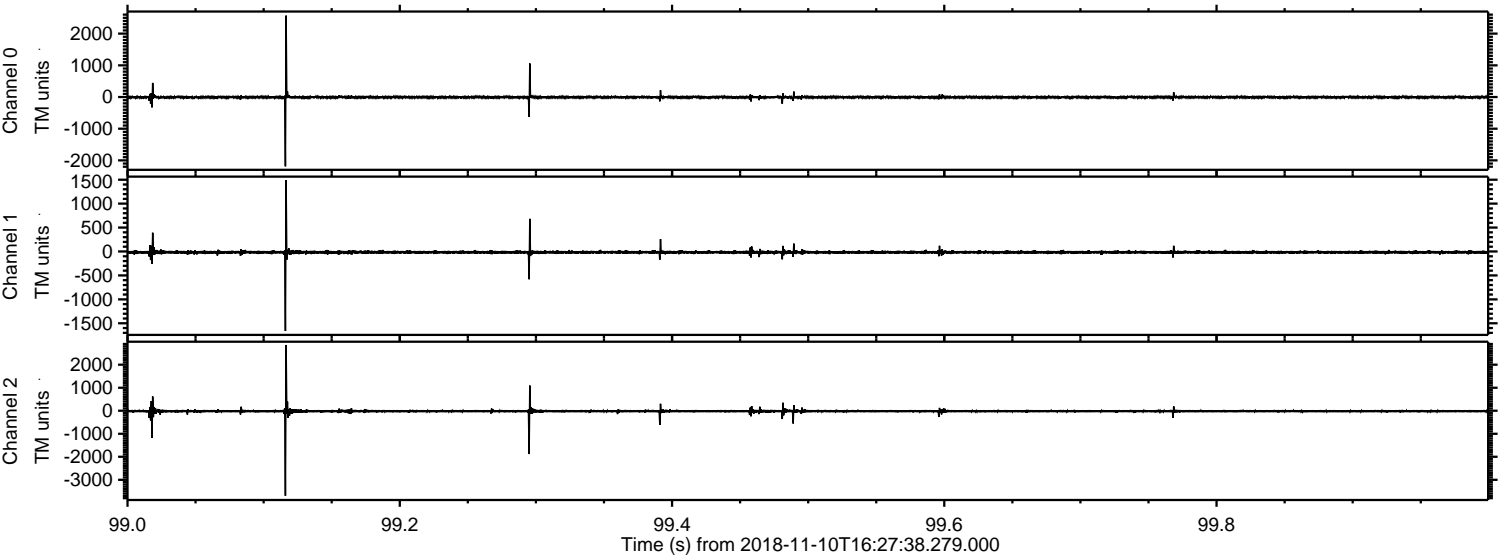


Processed Sat Nov 10 17:36:02 2018 by ELM ver.2012-10-06 from 001__elm20181110_162737__dat00.bin



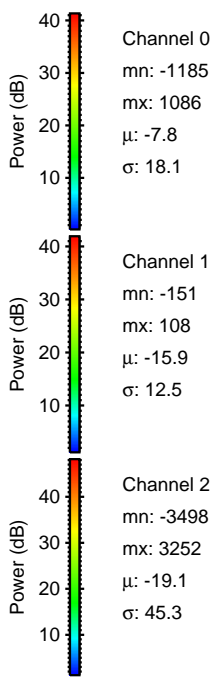
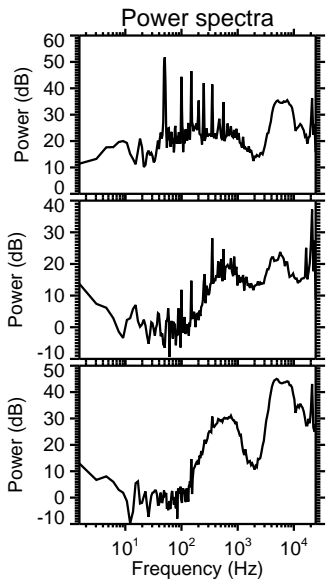
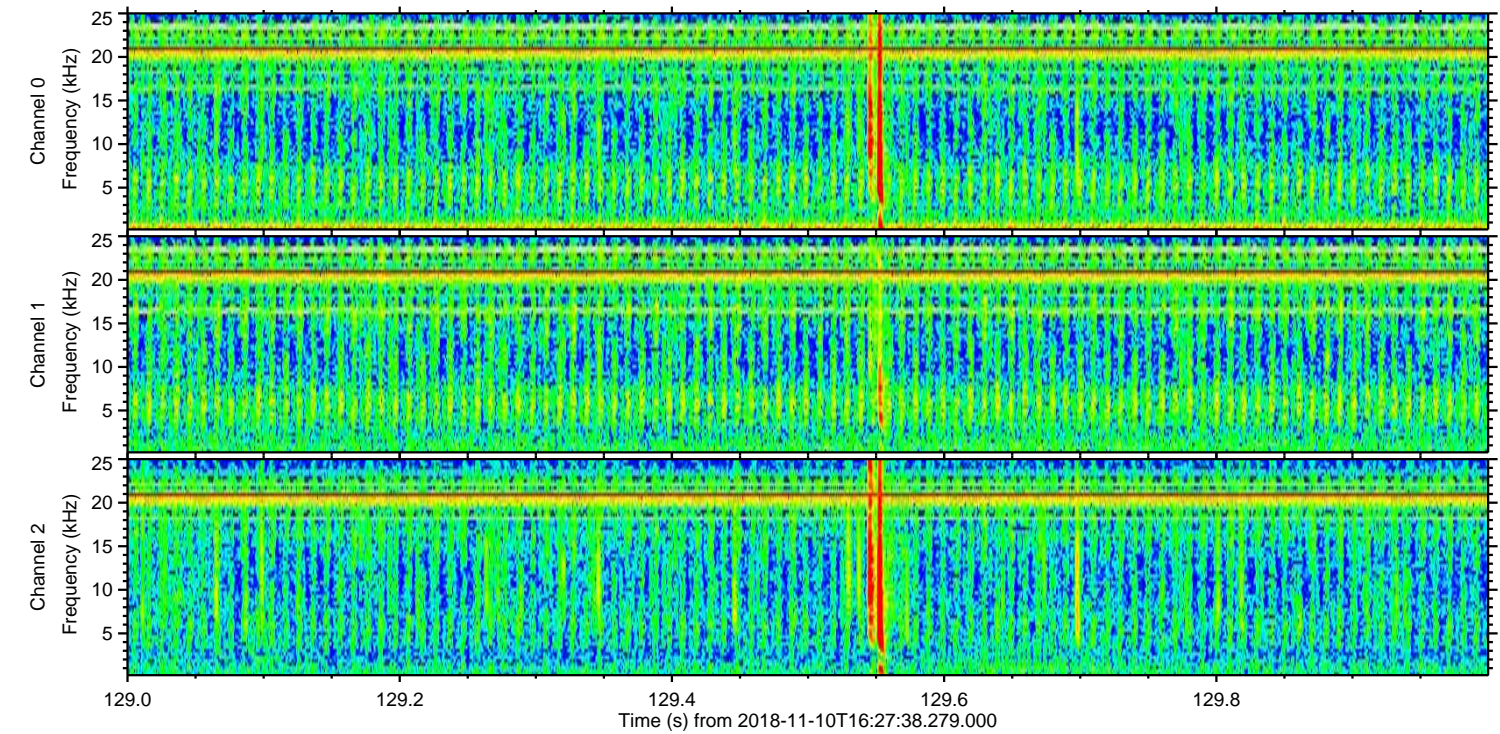
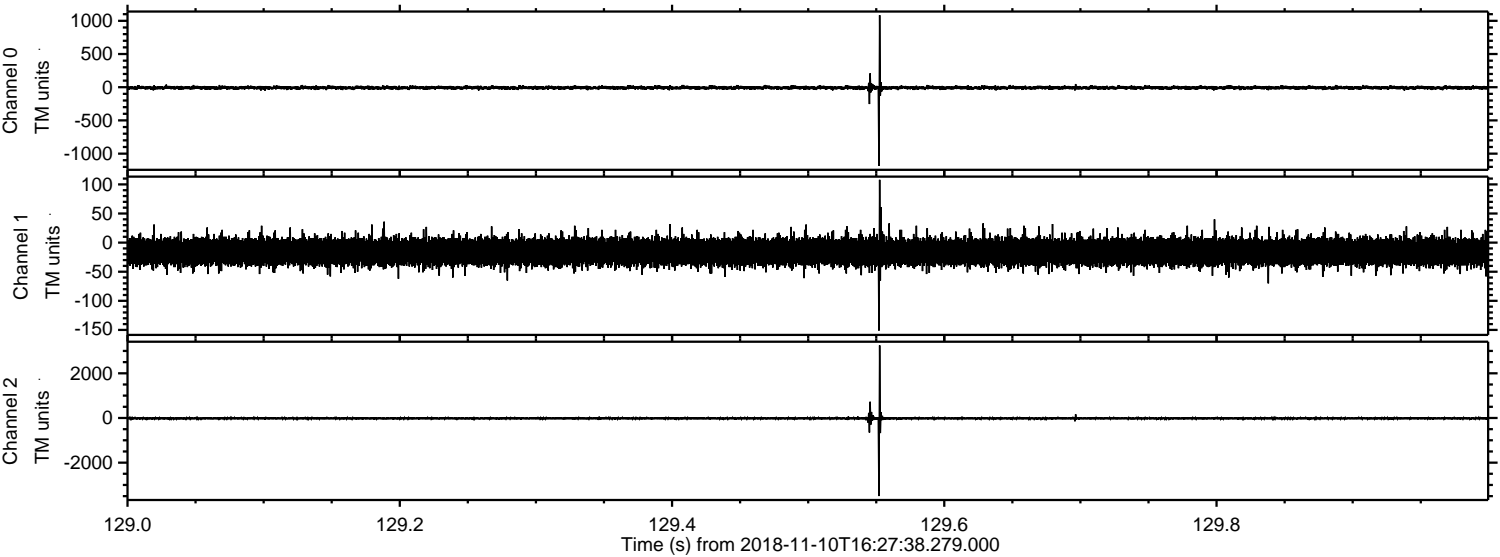
ELMAVAN 3D WAVEFORMS (Measured data sampled at 50 kHz) 51000 packets of 144 samples from 2018-11-10T16:27:38.279.000. Part 100/147

Processed Sat Nov 10 17:36:03 2018 by ELM ver.2012-10-06 from 001__elm20181110_162737__dat00.bin

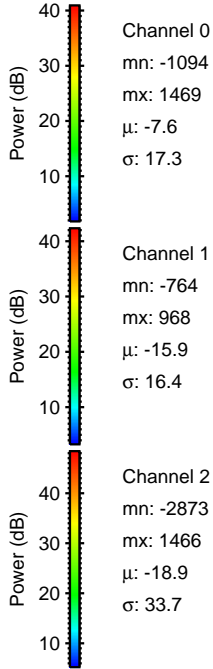
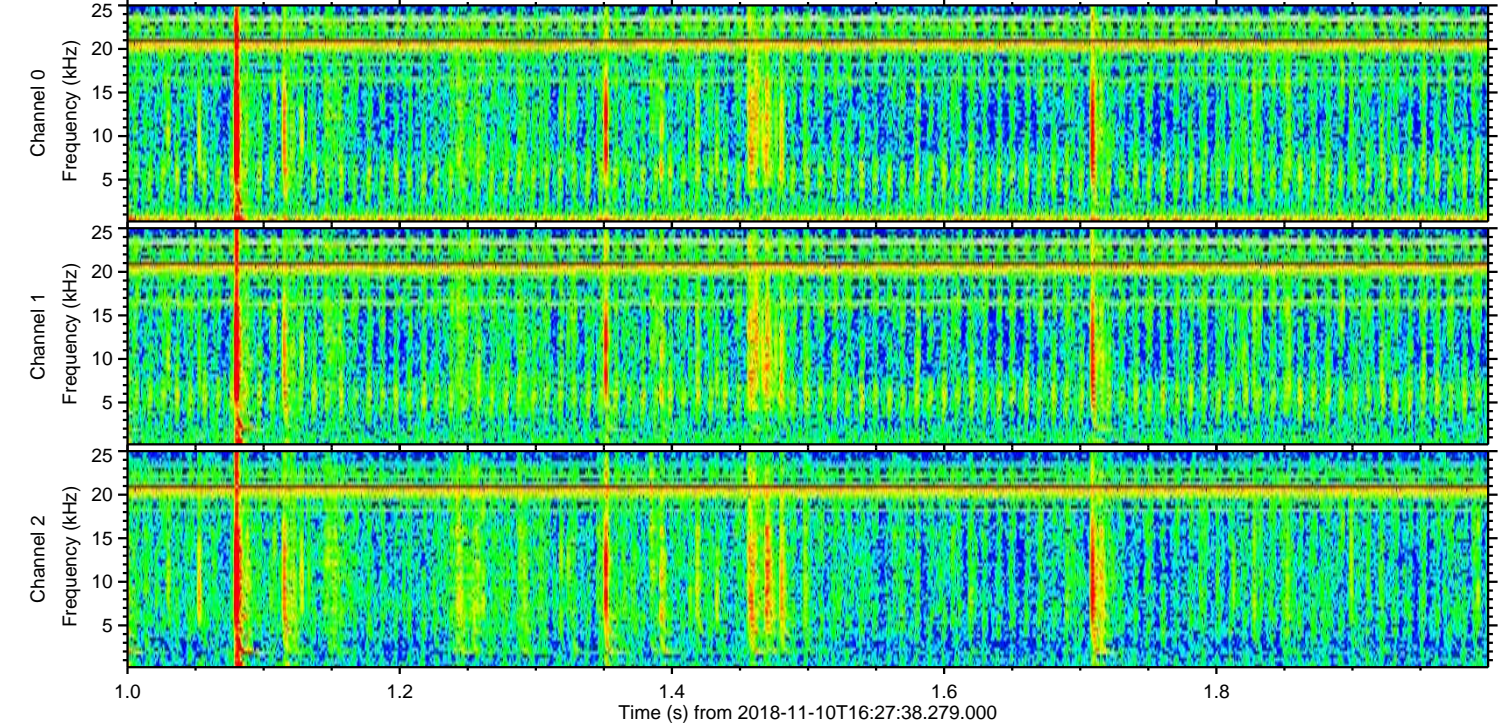
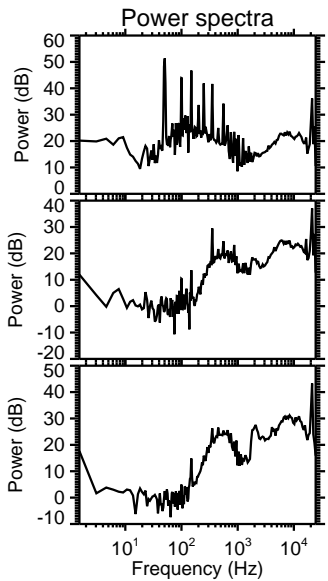
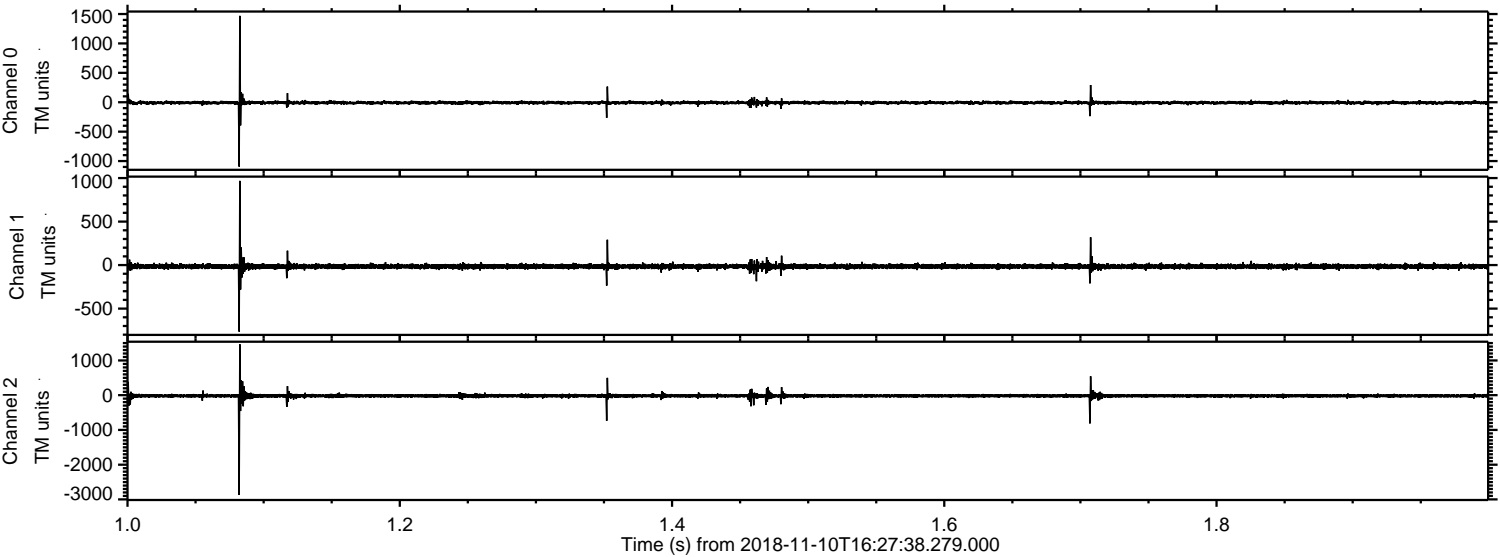


ELMAVAN 3D WAVEFORMS (Measured data sampled at 50 kHz) 51000 packets of 144 samples from 2018-11-10T16:27:38.279.000. Part 130/147

Processed Sat Nov 10 17:36:04 2018 by ELM ver.2012-10-06 from 001__elm20181110_162737__dat00.bin

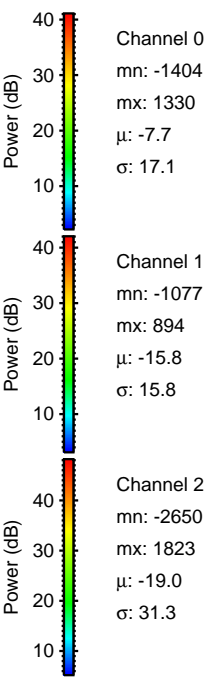
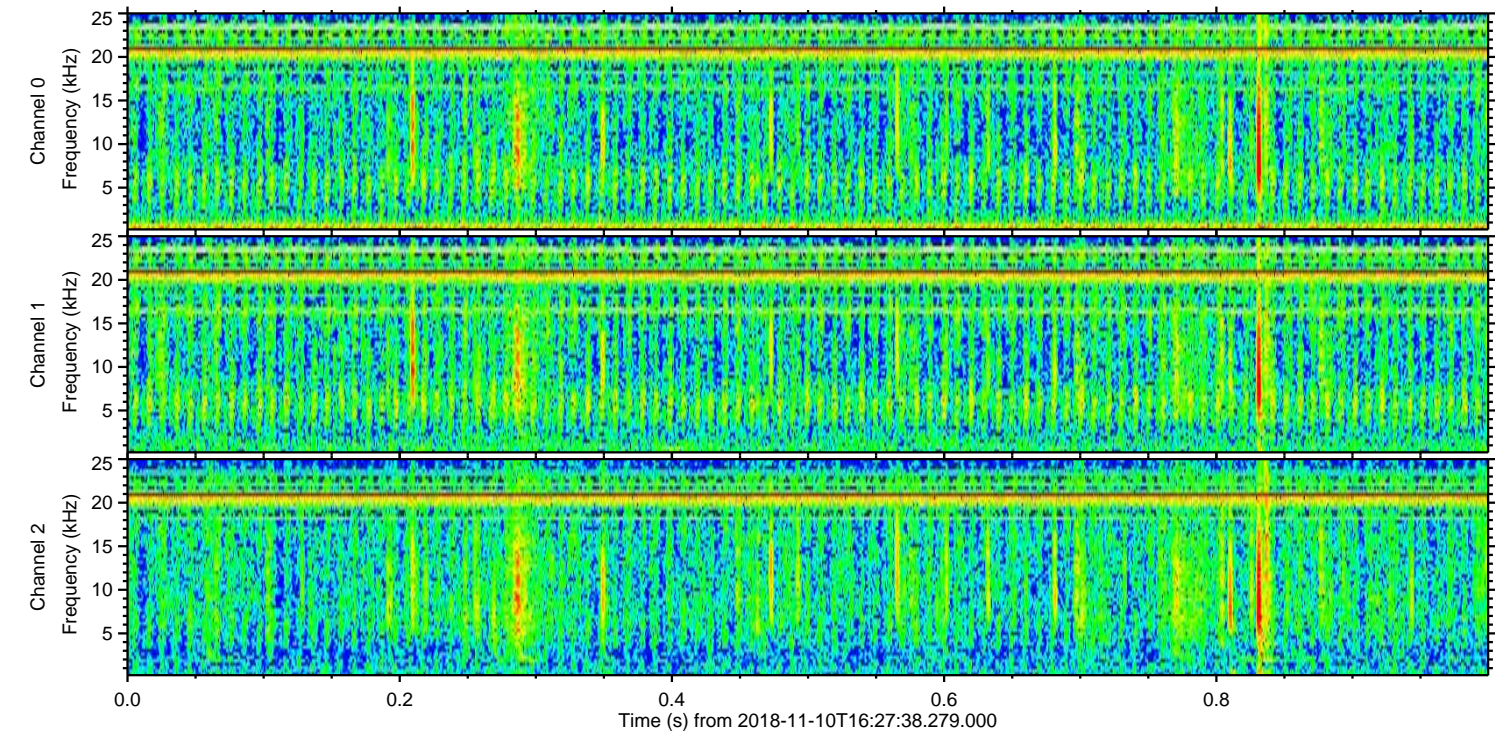
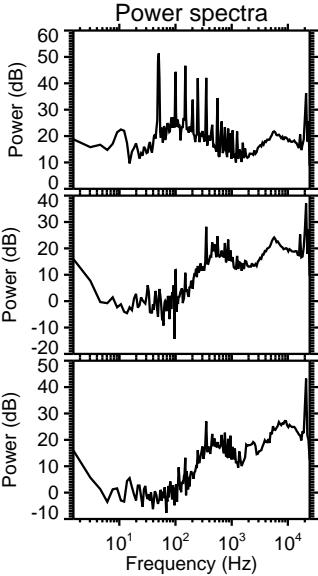
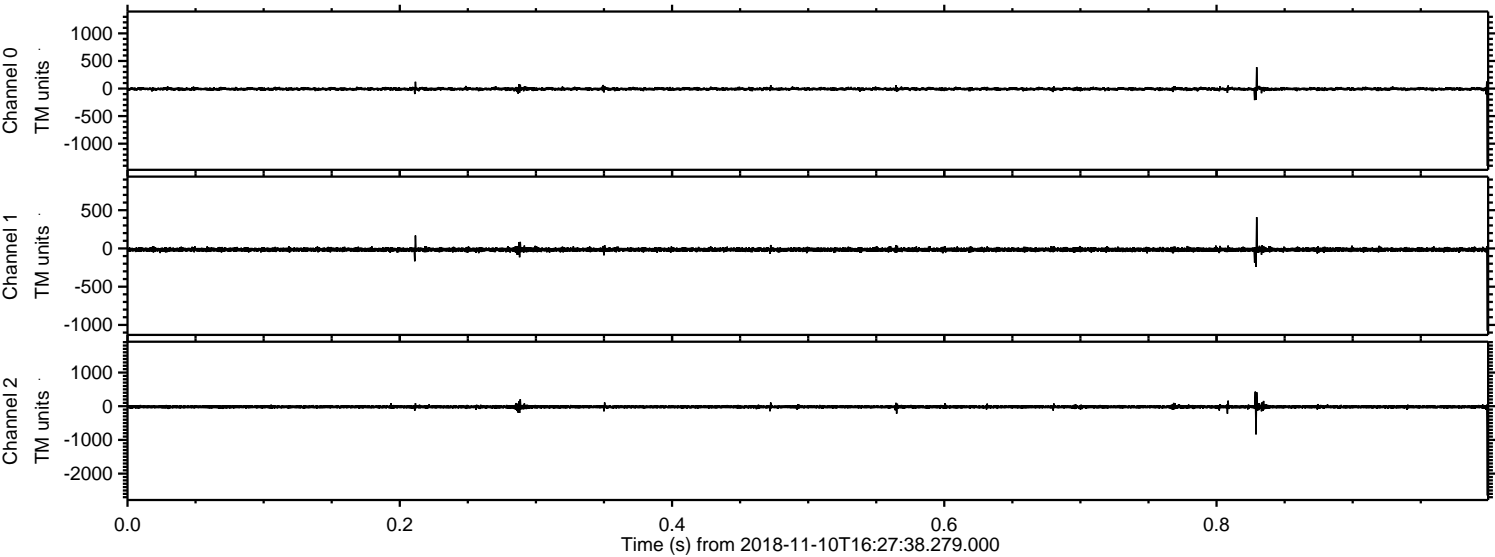


Processed Sat Nov 10 17:36:05 2018 by ELM ver.2012-10-06 from 001__elm20181110_162737__dat00.bin

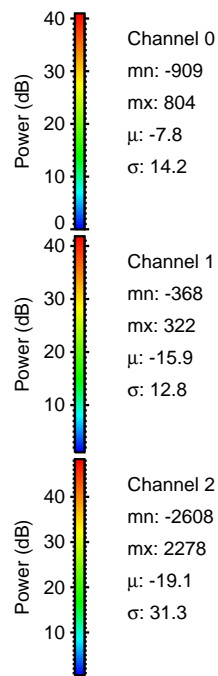
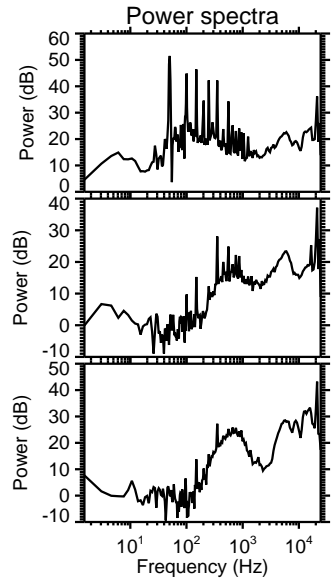
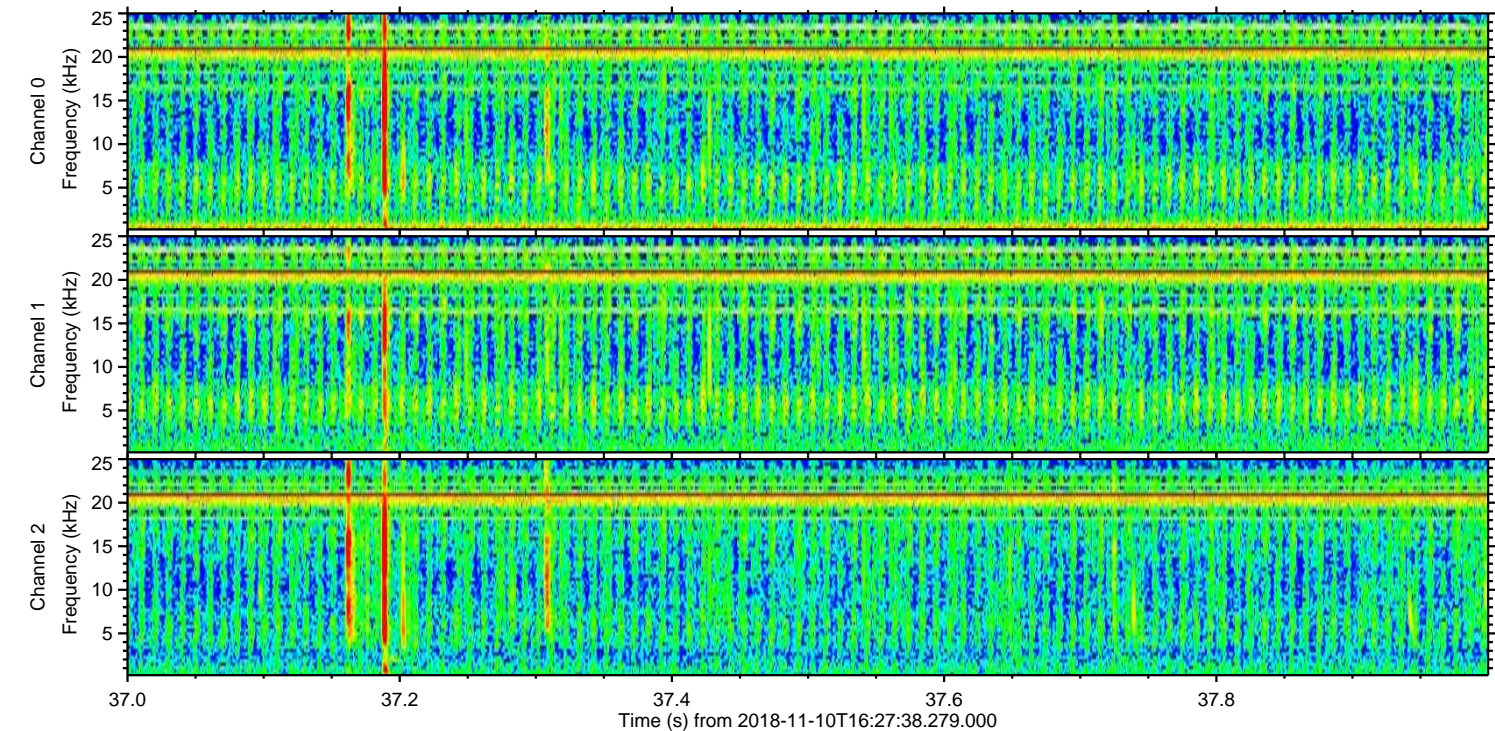
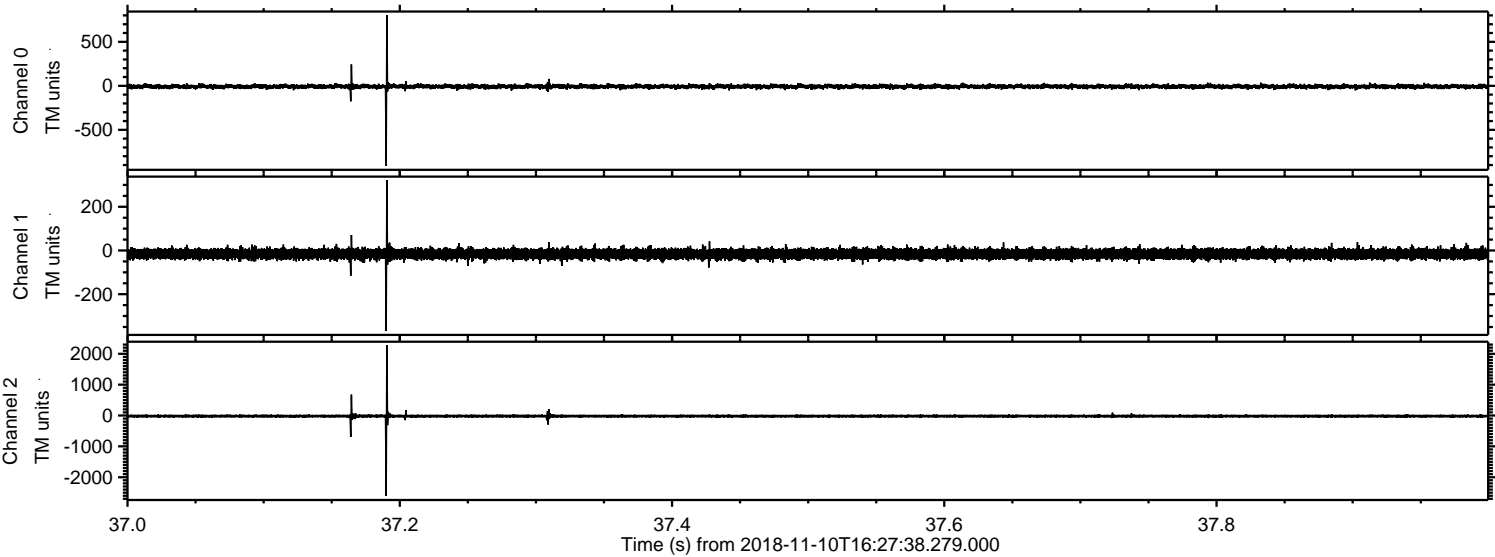


ELMAVAN 3D WAVEFORMS (Measured data sampled at 50 kHz) 51000 packets of 144 samples from 2018-11-10T16:27:38.279.000. Part 1/147

Processed Sat Nov 10 17:36:06 2018 by ELM ver.2012-10-06 from 001__elm20181110_162737__dat00.bin



Processed Sat Nov 10 17:36:06 2018 by ELM ver.2012-10-06 from 001__elm20181110_162737__dat00.bin



Channel 0
mn: -909
mx: 804
 μ : -7.8
 σ : 14.2

Channel 1
mn: -368
mx: 322
 μ : -15.9
 σ : 12.8

Channel 2
mn: -2608
mx: 2278
 μ : -19.1
 σ : 31.3

Processed Sat Nov 10 17:36:07 2018 by ELM ver.2012-10-06 from 001__elm20181110_162737__dat00.bin

