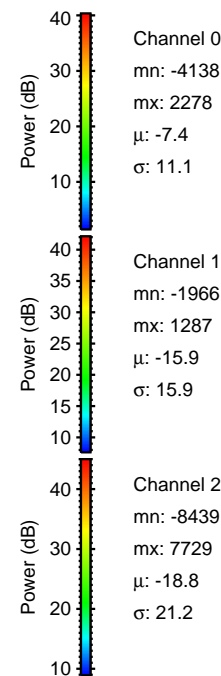
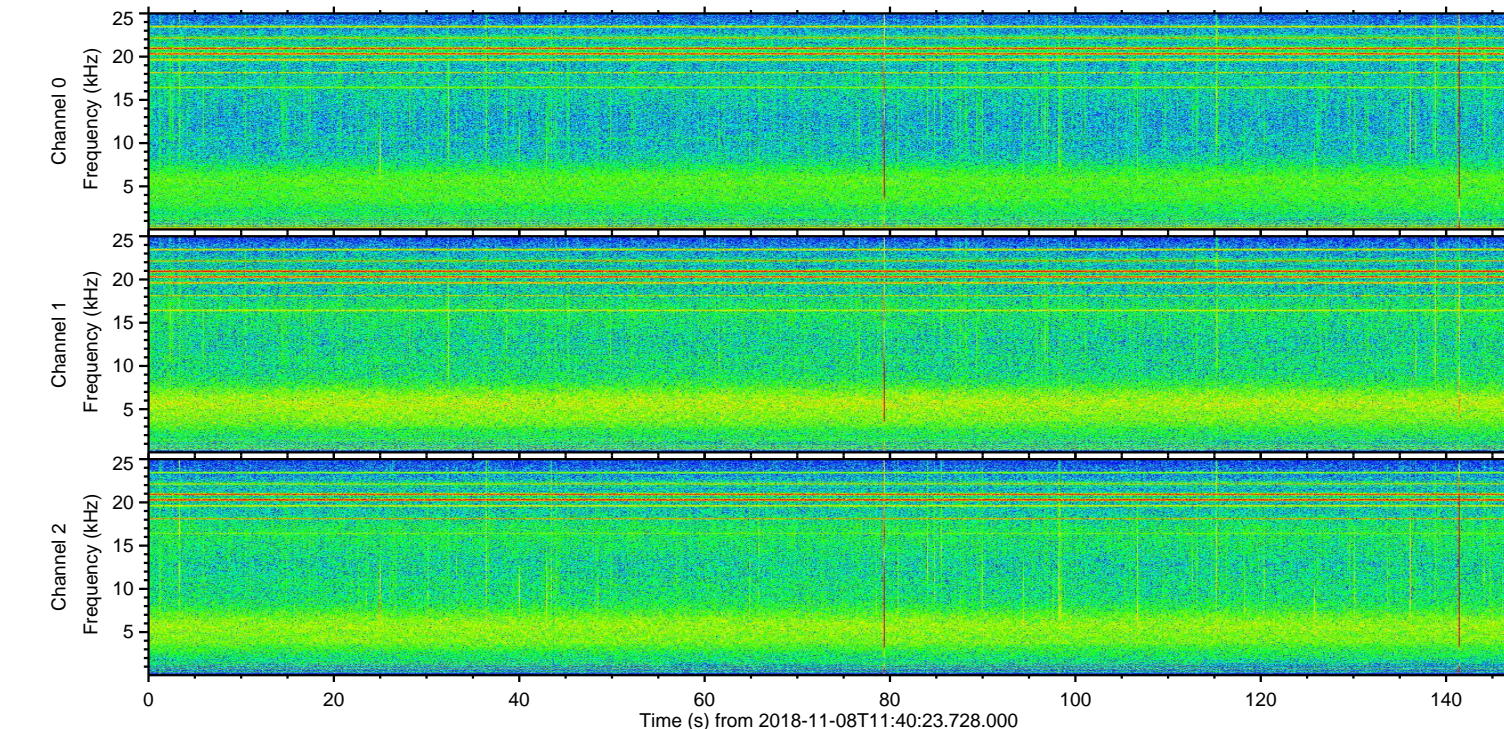
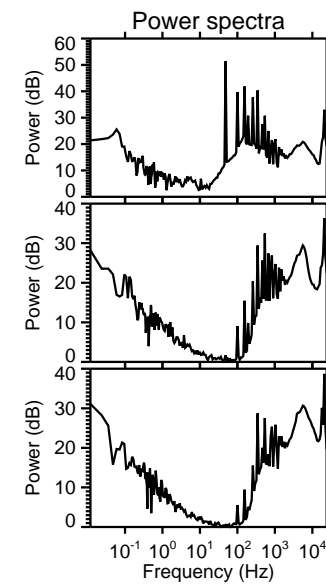
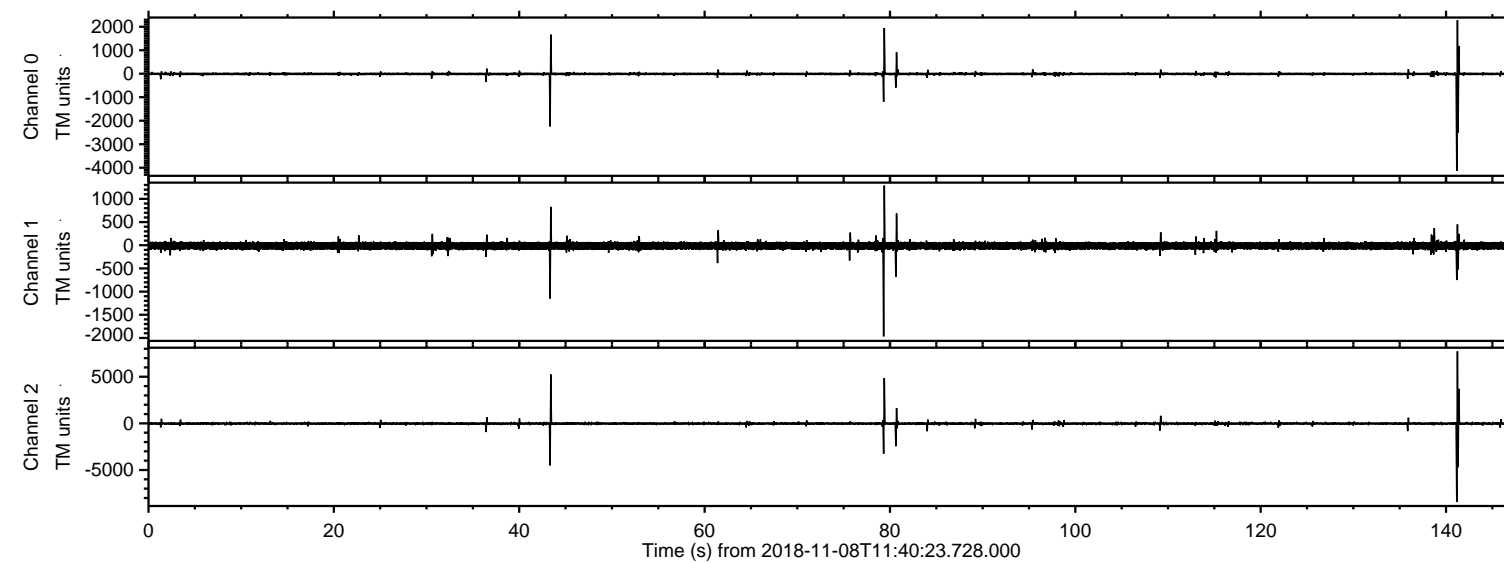


# ELMAVAN 3D WAVEFORMS (Measured data sampled at 50 kHz) 51000 packets of 144 samples from 2018-11-08T11:40:23.728.000.

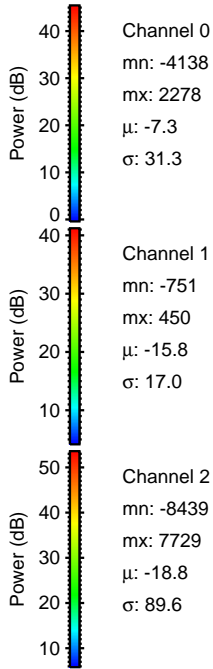
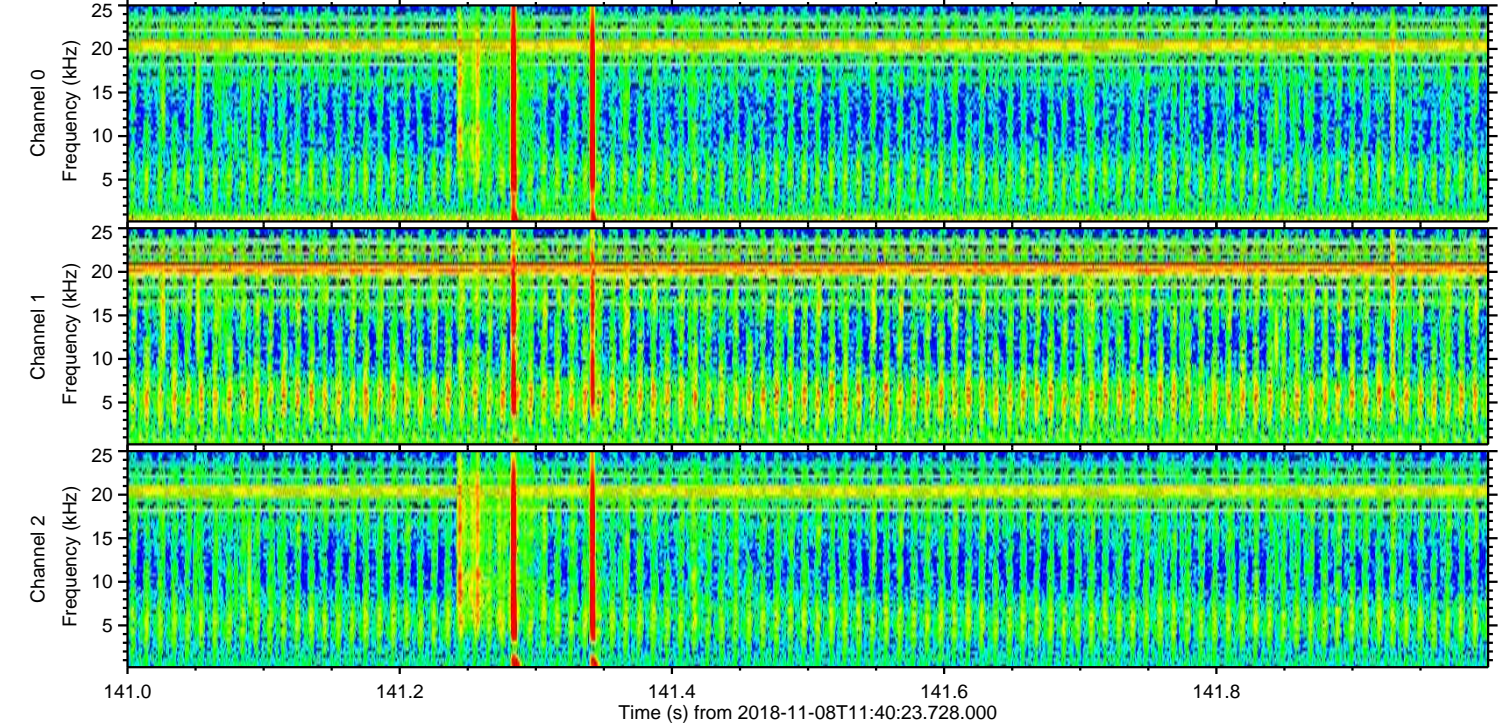
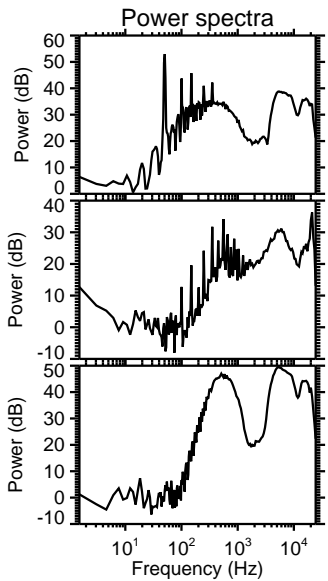
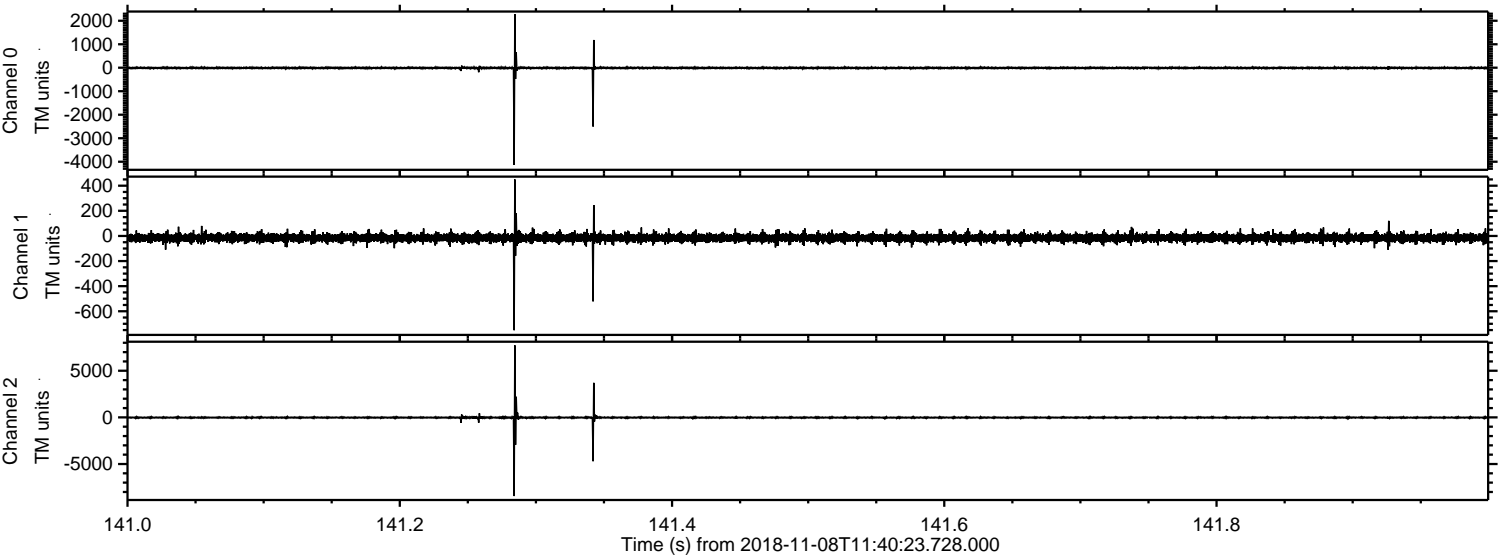
Processed Thu Nov 8 12:48:55 2018 by ELM ver.2012-10-06 from 001\_\_elm20181108\_114022\_\_dat00.bin





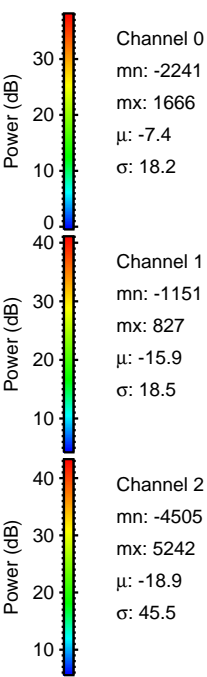
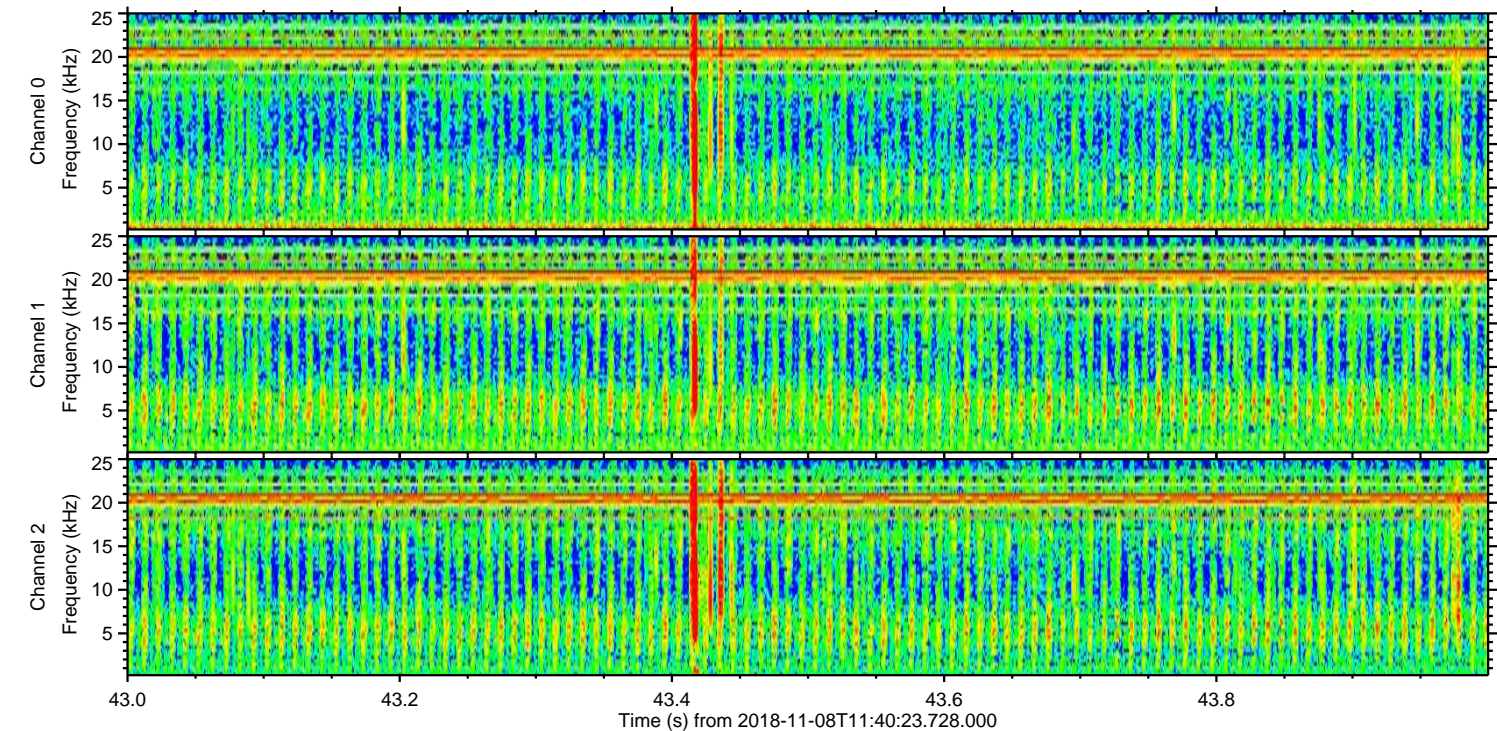
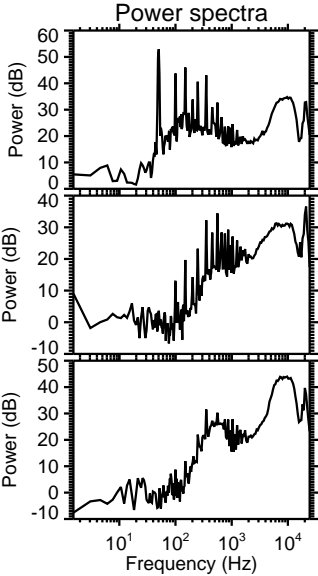
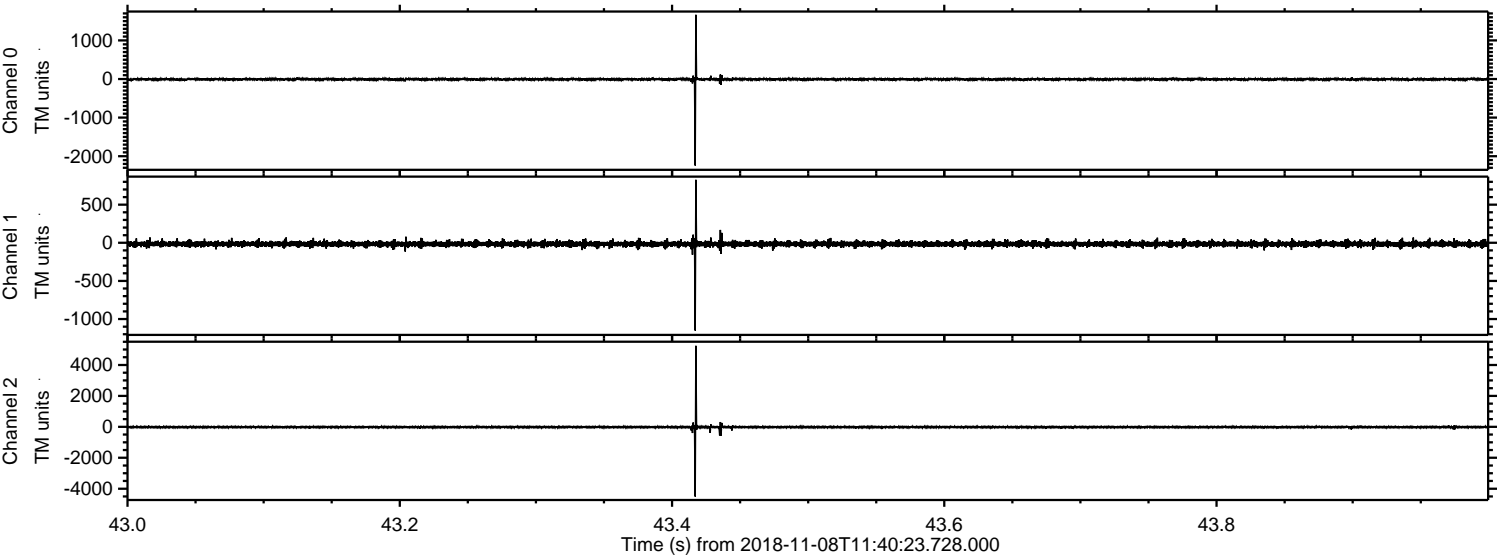
ELMAVAN 3D WAVEFORMS (Measured data sampled at 50 kHz) 51000 packets of 144 samples from 2018-11-08T11:40:23.728.000. Part 142/147

Processed Thu Nov 8 12:49:02 2018 by ELM ver.2012-10-06 from 001\_\_elm20181108\_114022\_\_dat00.bin



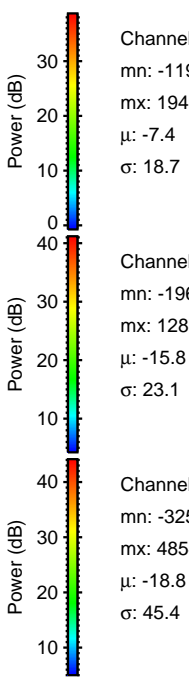
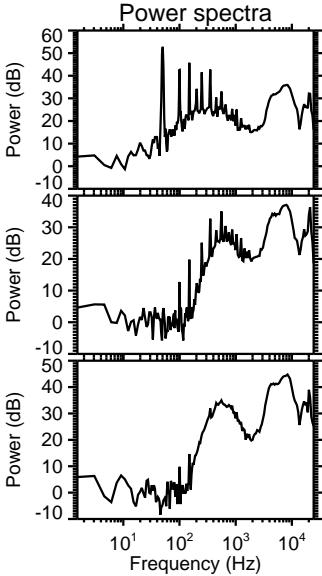
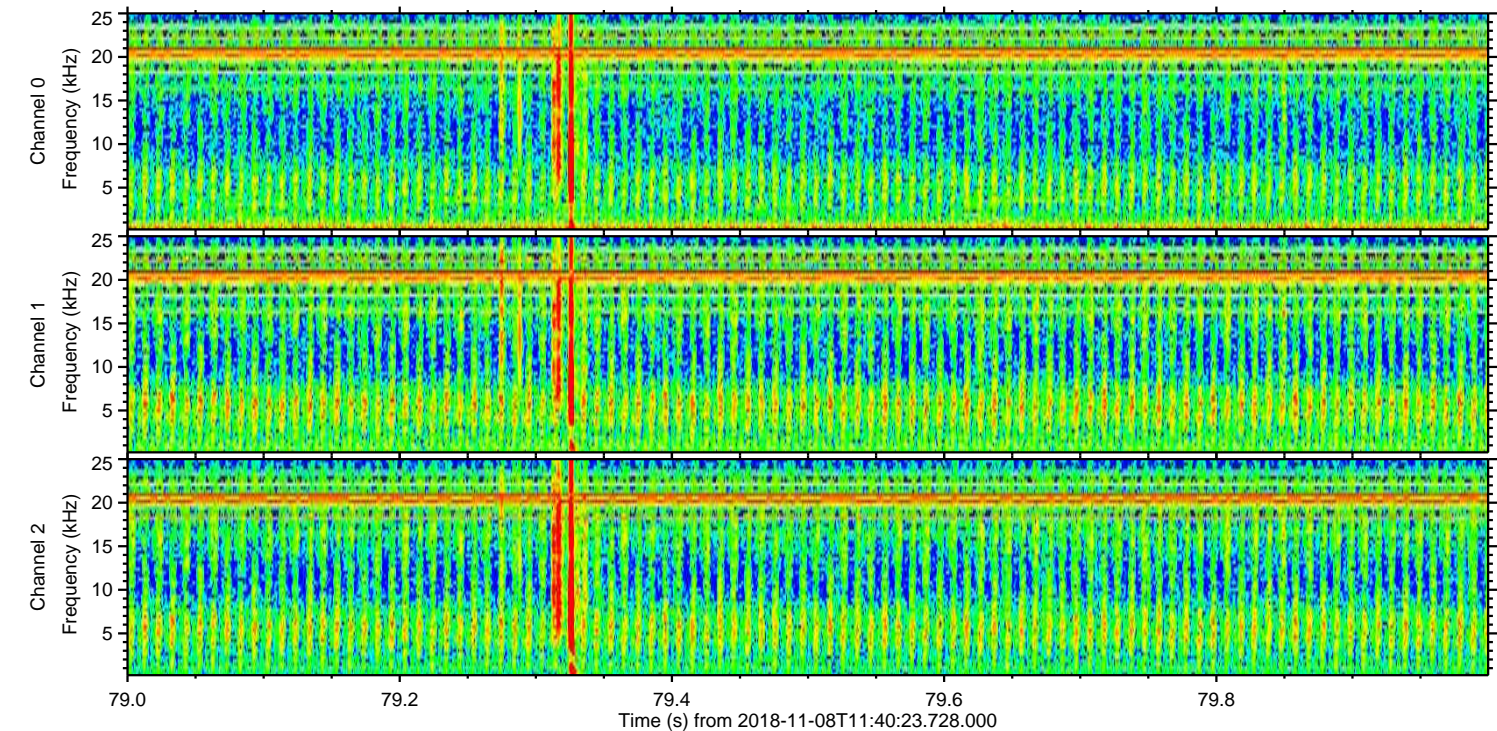
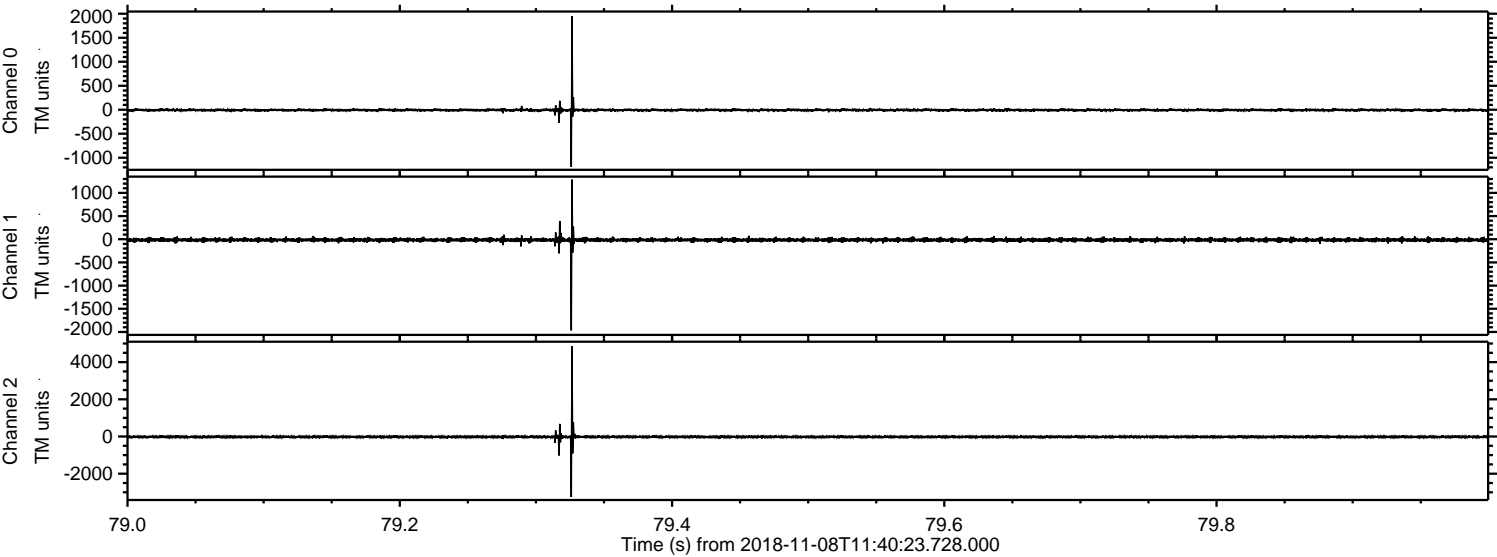


Processed Thu Nov 8 12:49:03 2018 by ELM ver.2012-10-06 from 001\_\_elm20181108\_114022\_\_dat00.bin



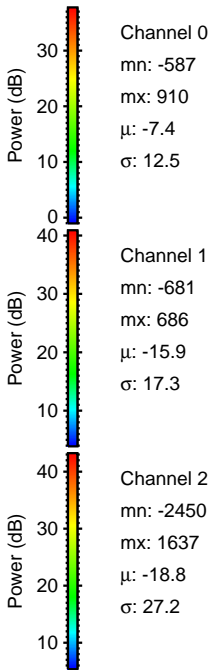
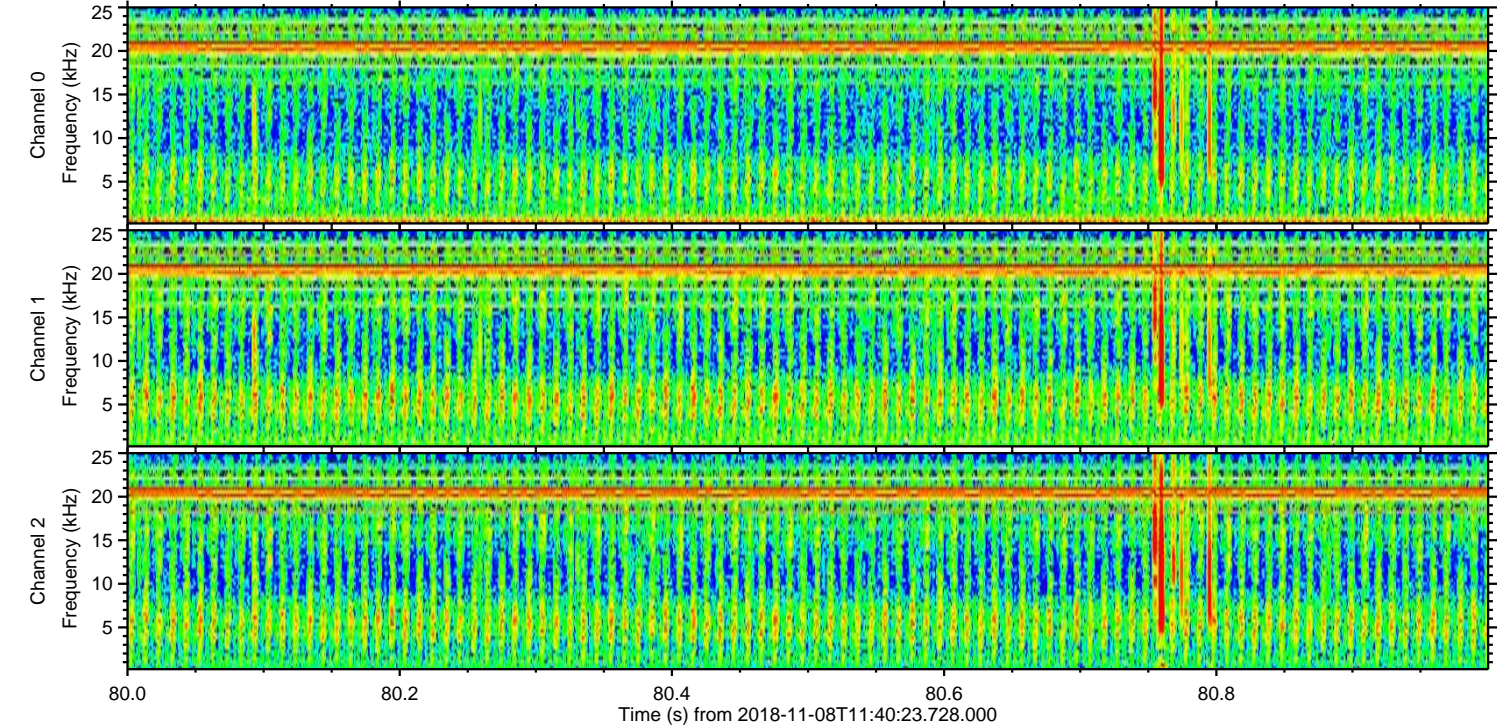
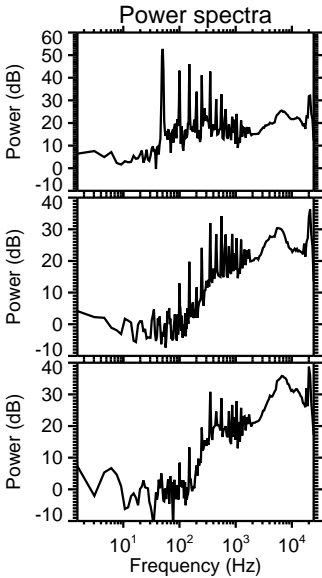
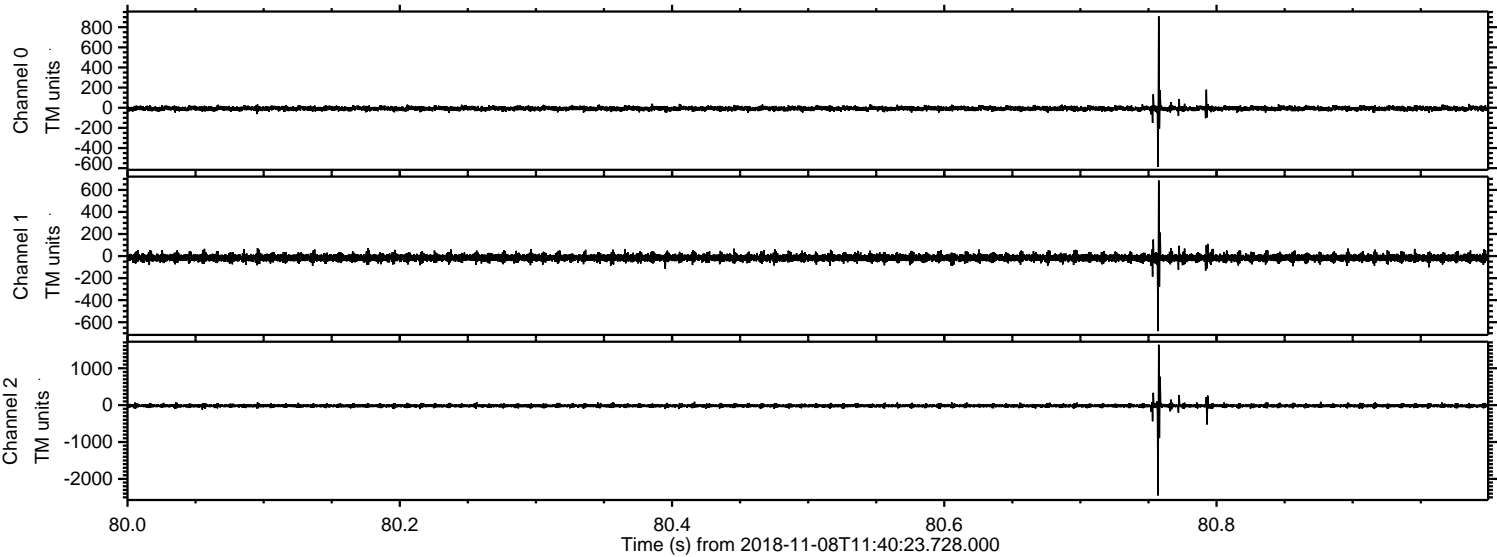


Processed Thu Nov 8 12:49:04 2018 by ELM ver.2012-10-06 from 001\_\_elm20181108\_114022\_\_dat00.bin



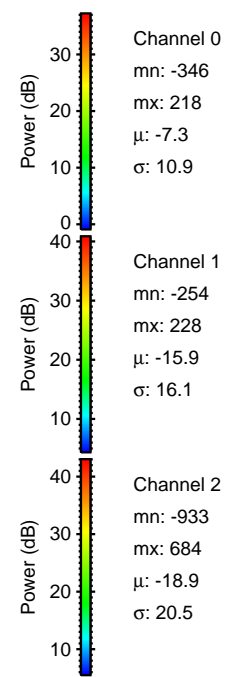
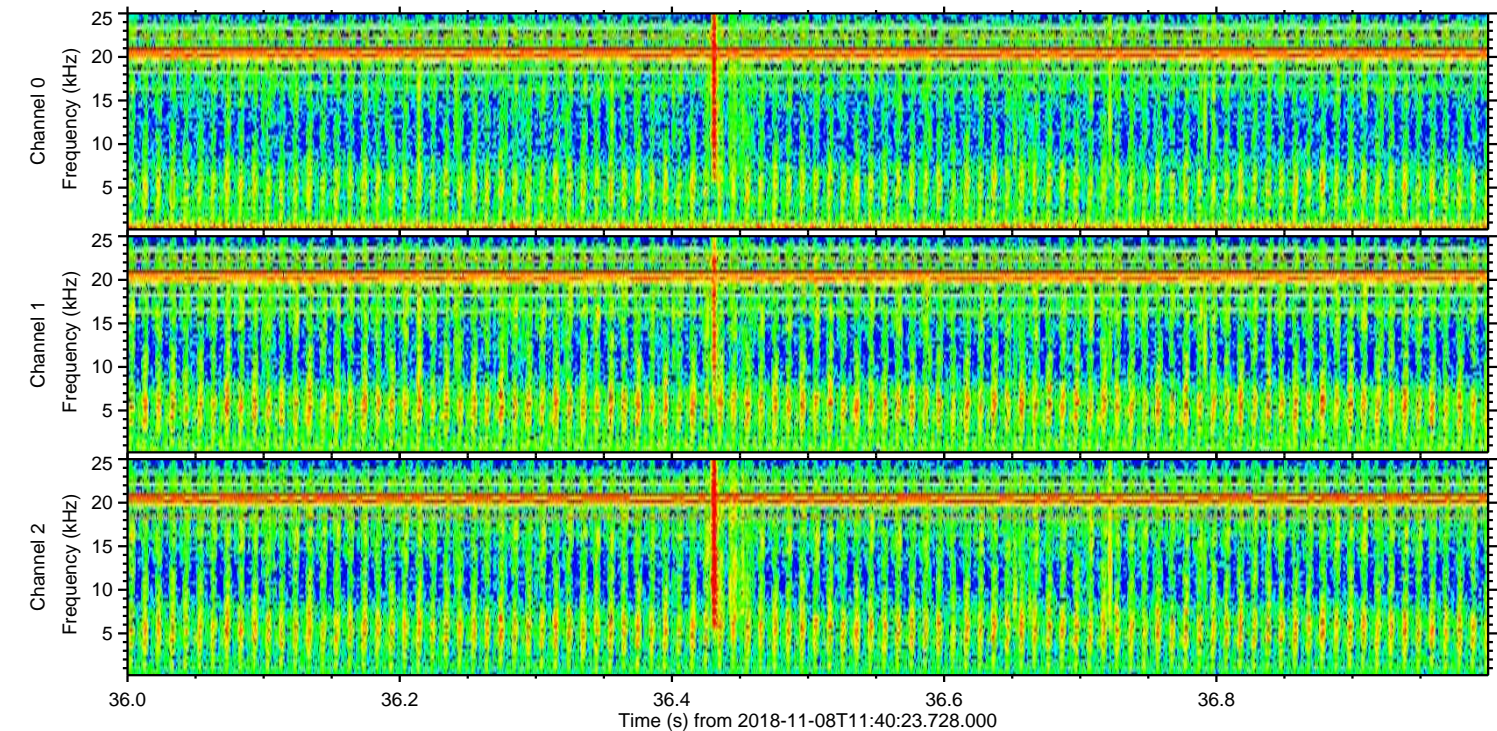
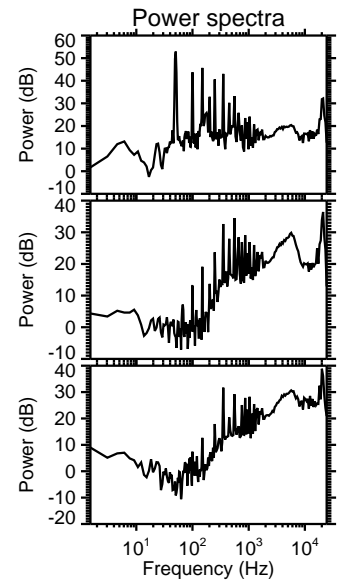
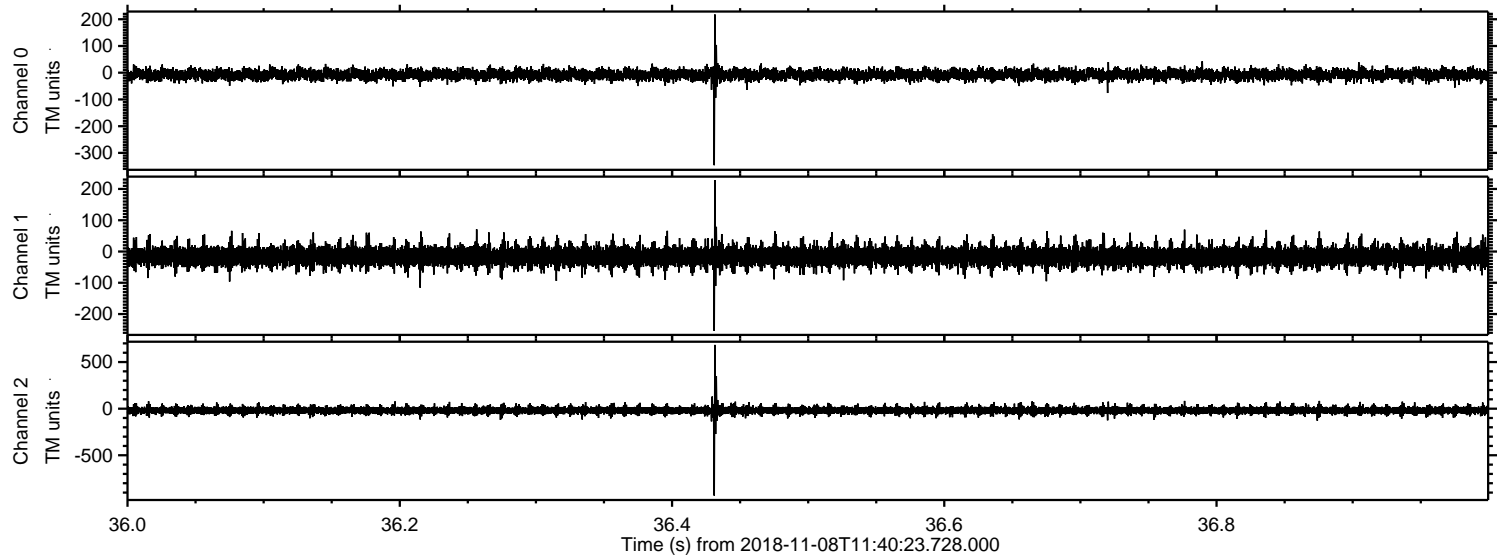


Processed Thu Nov 8 12:49:05 2018 by ELM ver.2012-10-06 from 001\_\_elm20181108\_114022\_\_dat00.bin



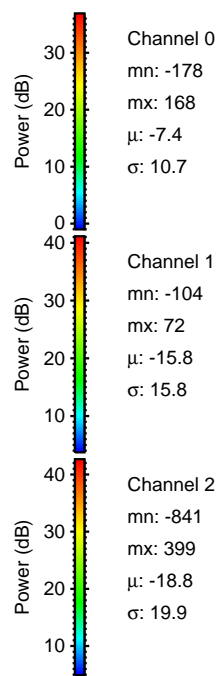
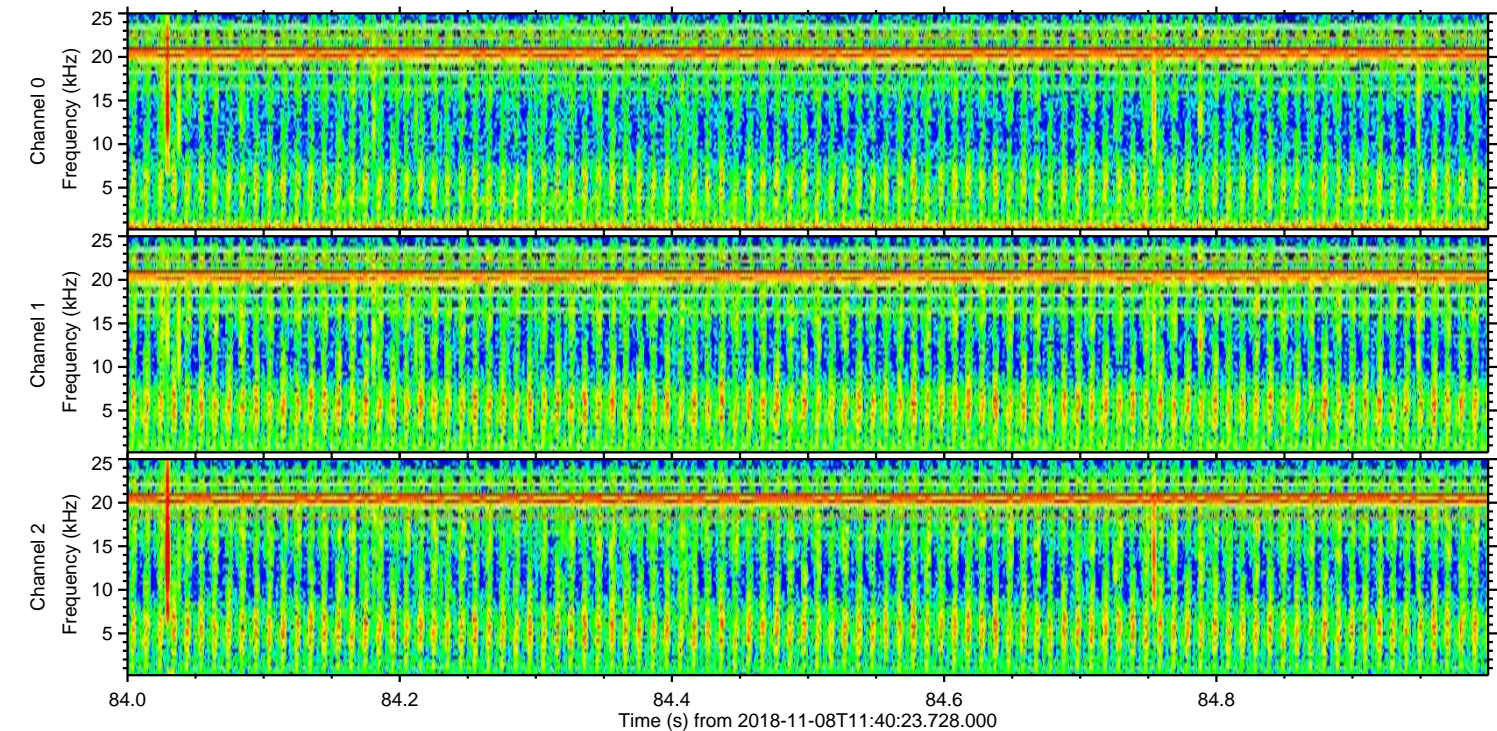
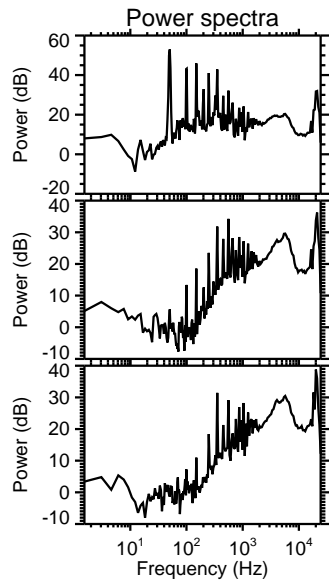
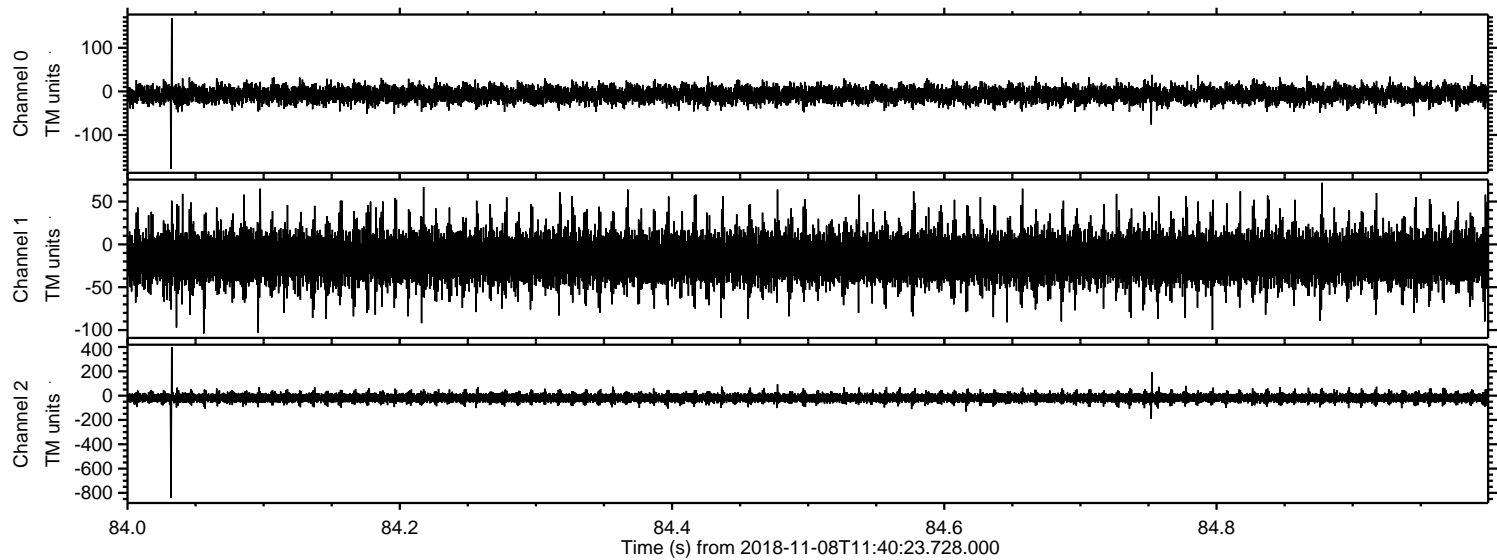


Processed Thu Nov 8 12:49:06 2018 by ELM ver.2012-10-06 from 001\_\_elm20181108\_114022\_\_dat00.bin



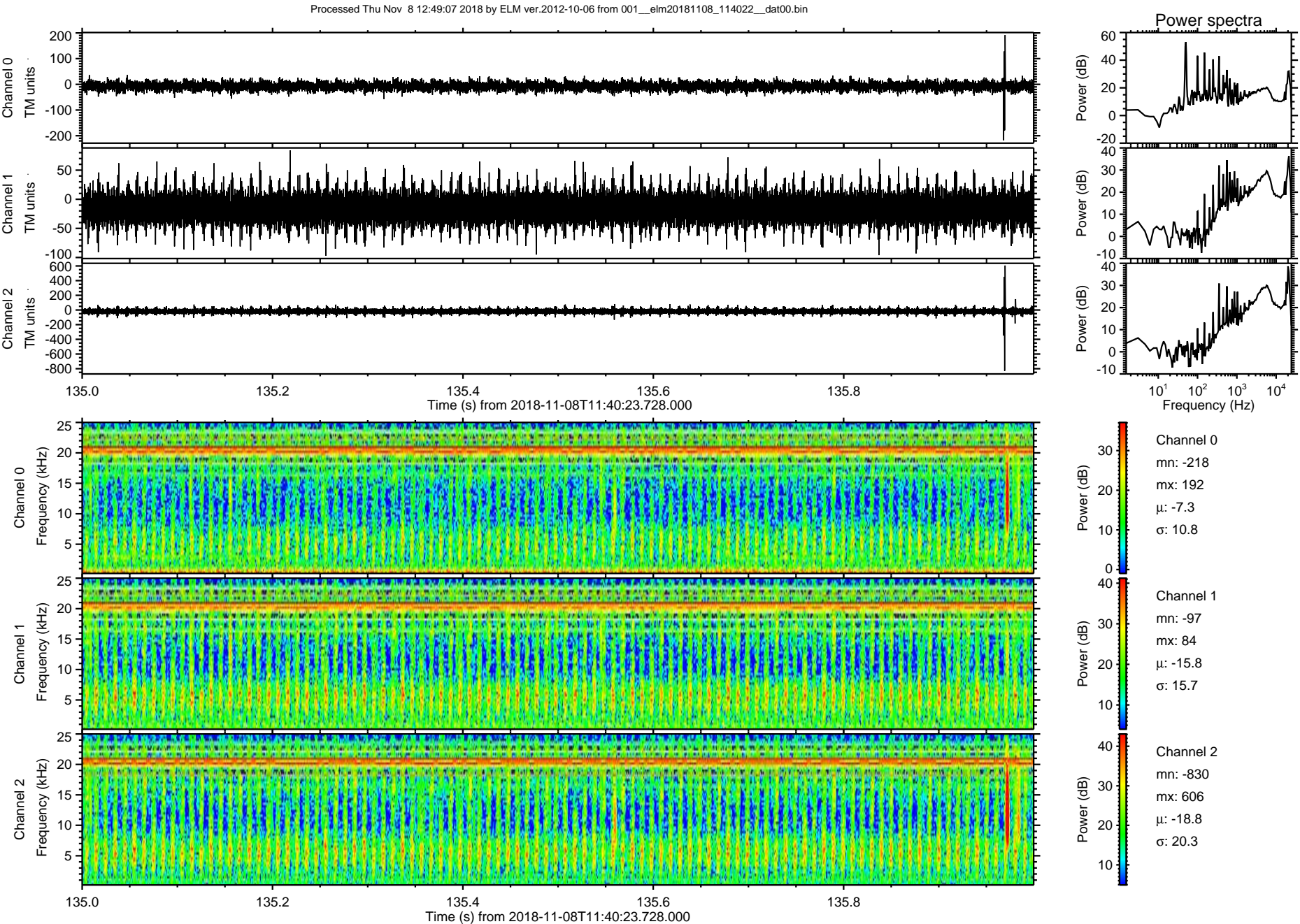


Processed Thu Nov 8 12:49:06 2018 by ELM ver.2012-10-06 from 001\_\_elm20181108\_114022\_\_dat00.bin



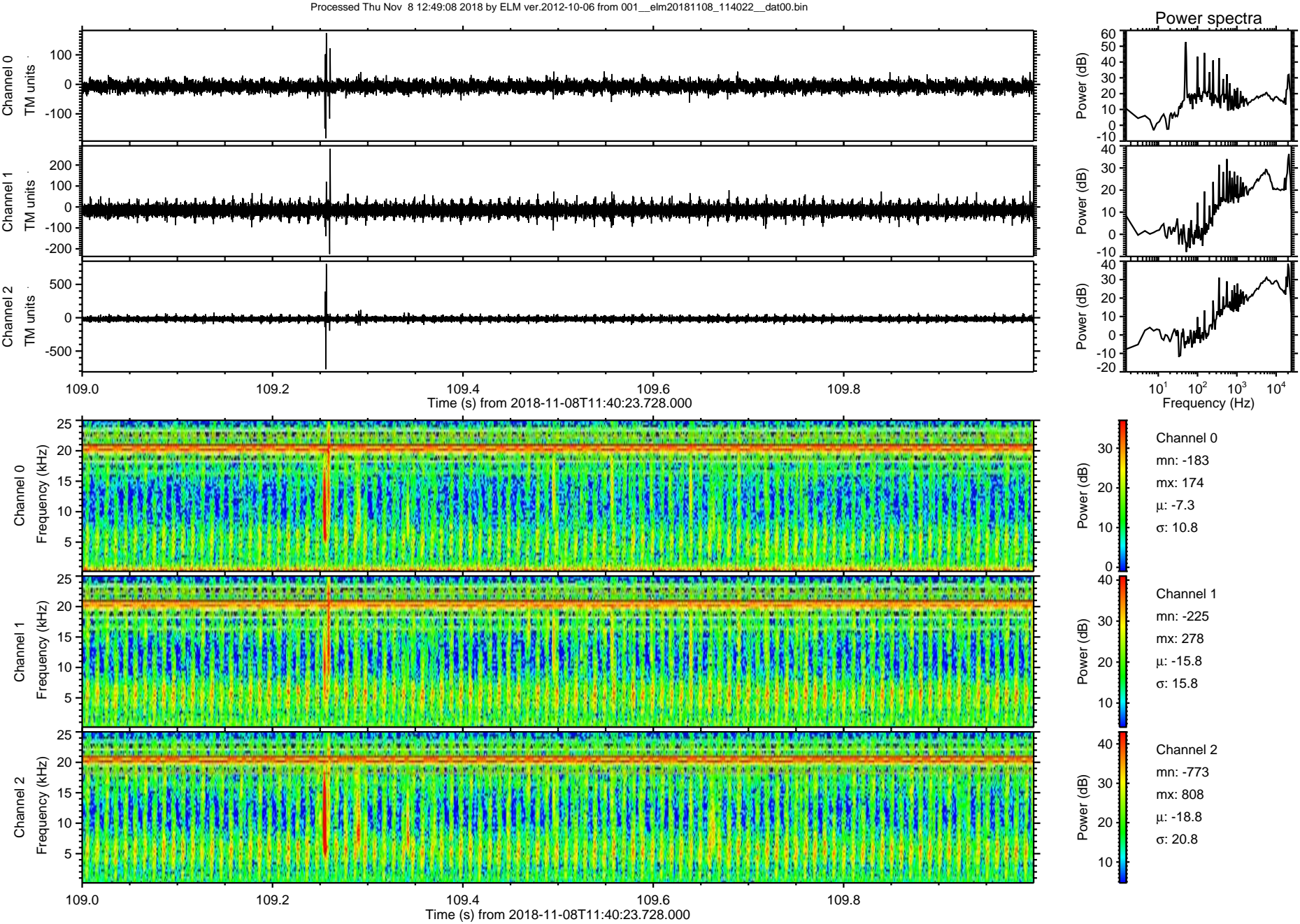


ELMAVAN 3D WAVEFORMS (Measured data sampled at 50 kHz) 51000 packets of 144 samples from 2018-11-08T11:40:23.728.000. Part 136/147



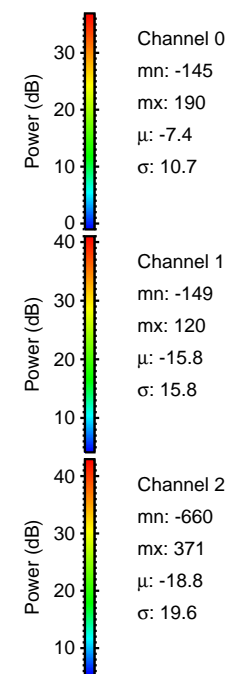
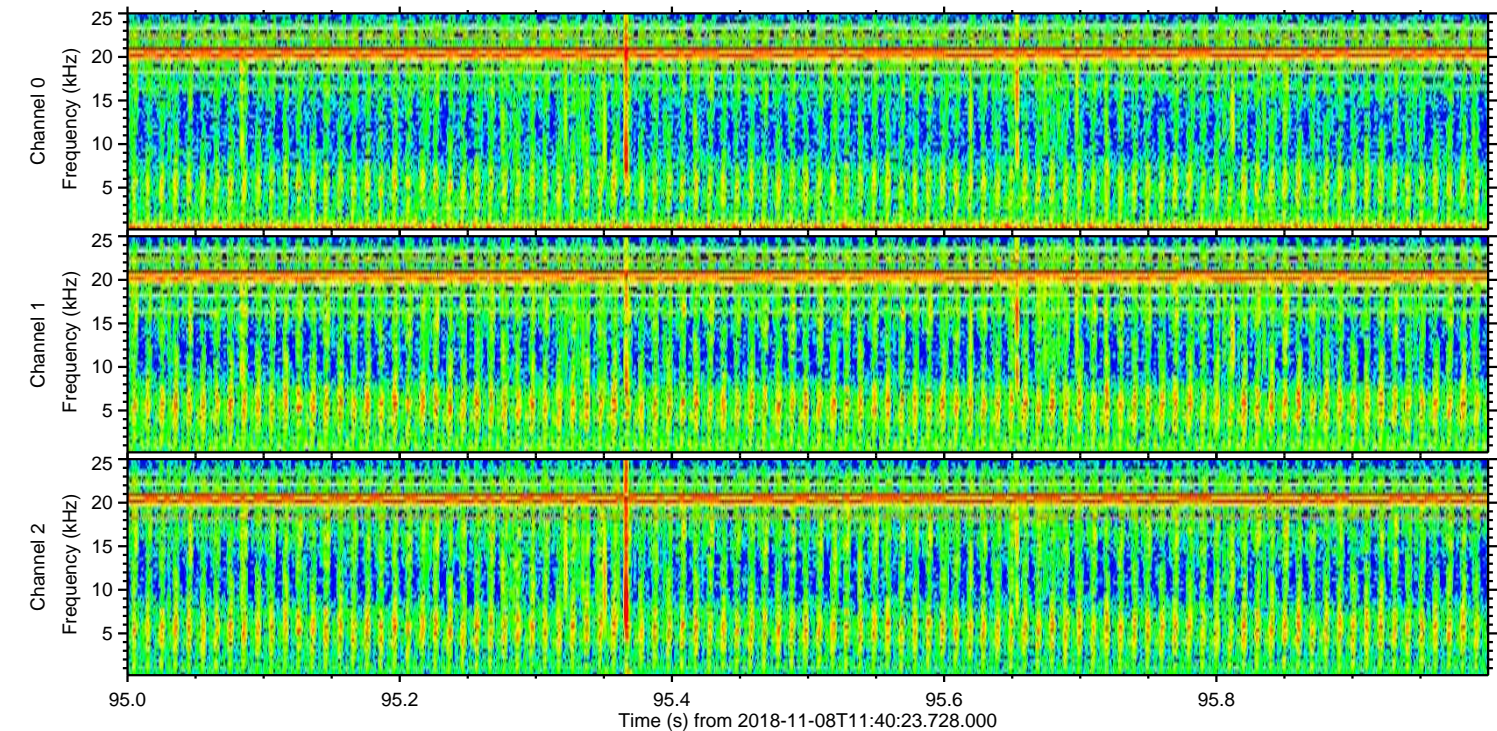
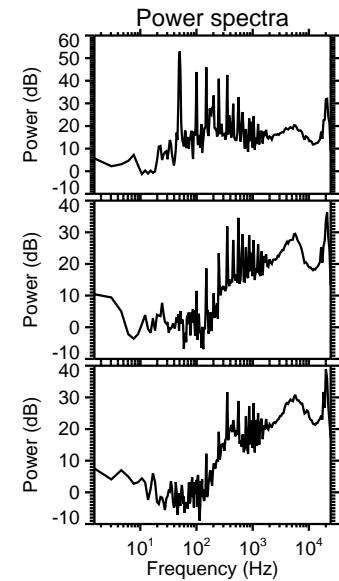
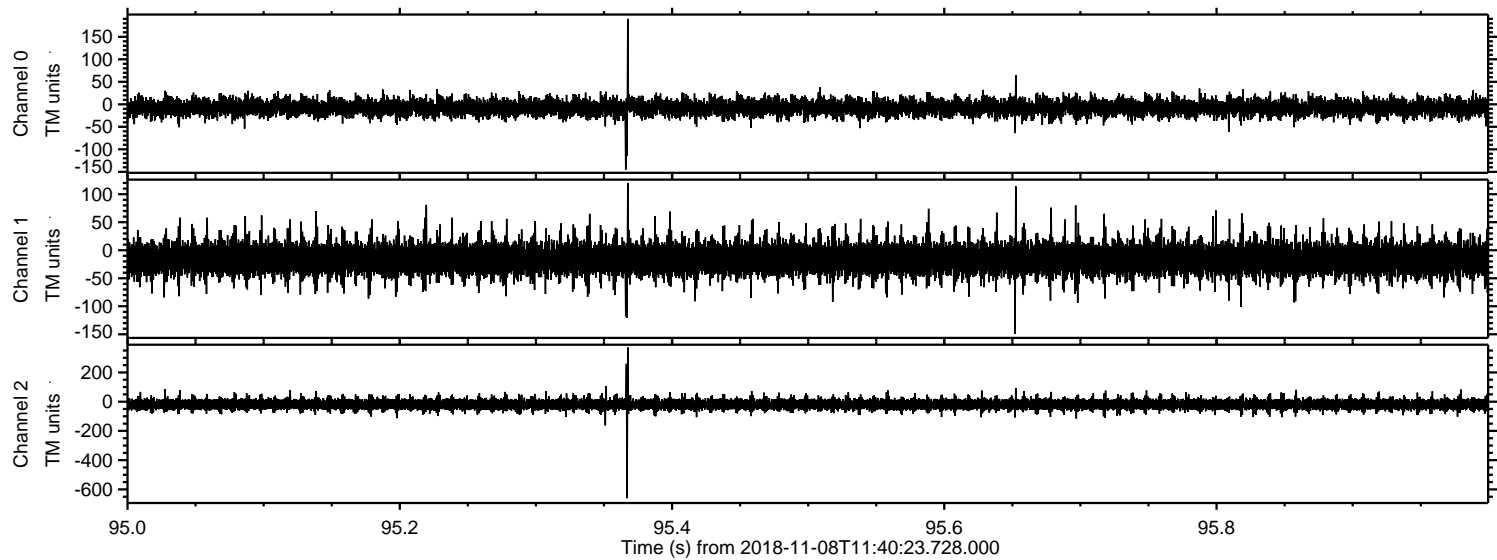


ELMAVAN 3D WAVEFORMS (Measured data sampled at 50 kHz) 51000 packets of 144 samples from 2018-11-08T11:40:23.728.000. Part 110/147





Processed Thu Nov 8 12:49:09 2018 by ELM ver.2012-10-06 from 001\_\_elm20181108\_114022\_\_dat00.bin





Processed Thu Nov 8 12:49:10 2018 by ELM ver.2012-10-06 from 001\_\_elm20181108\_114022\_\_dat00.bin

