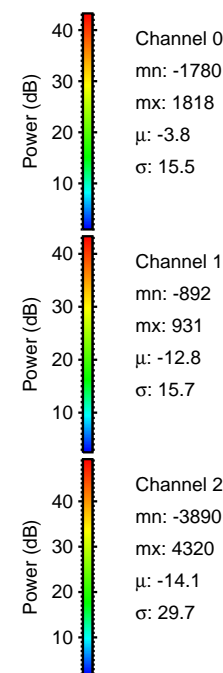
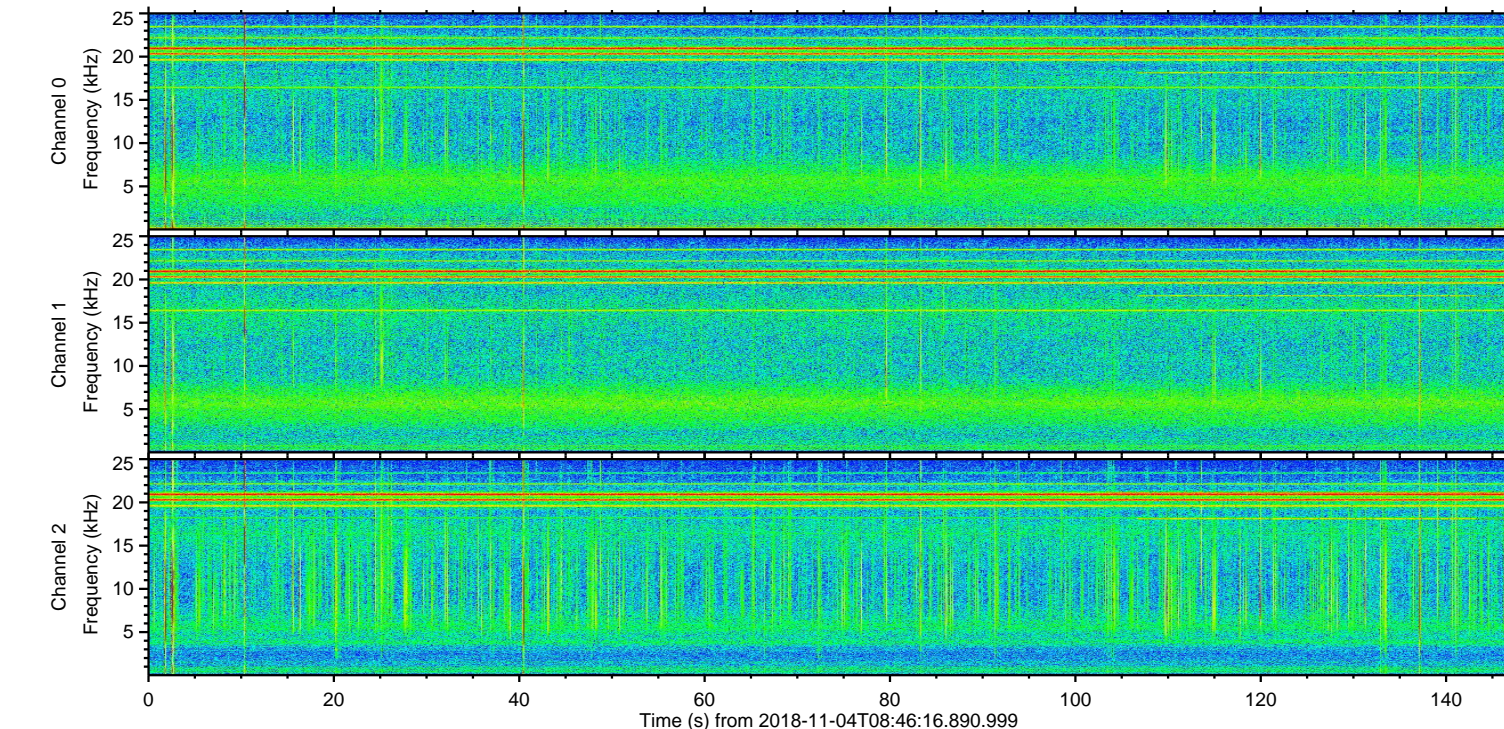
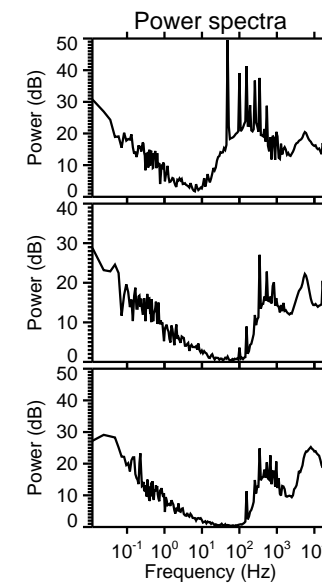
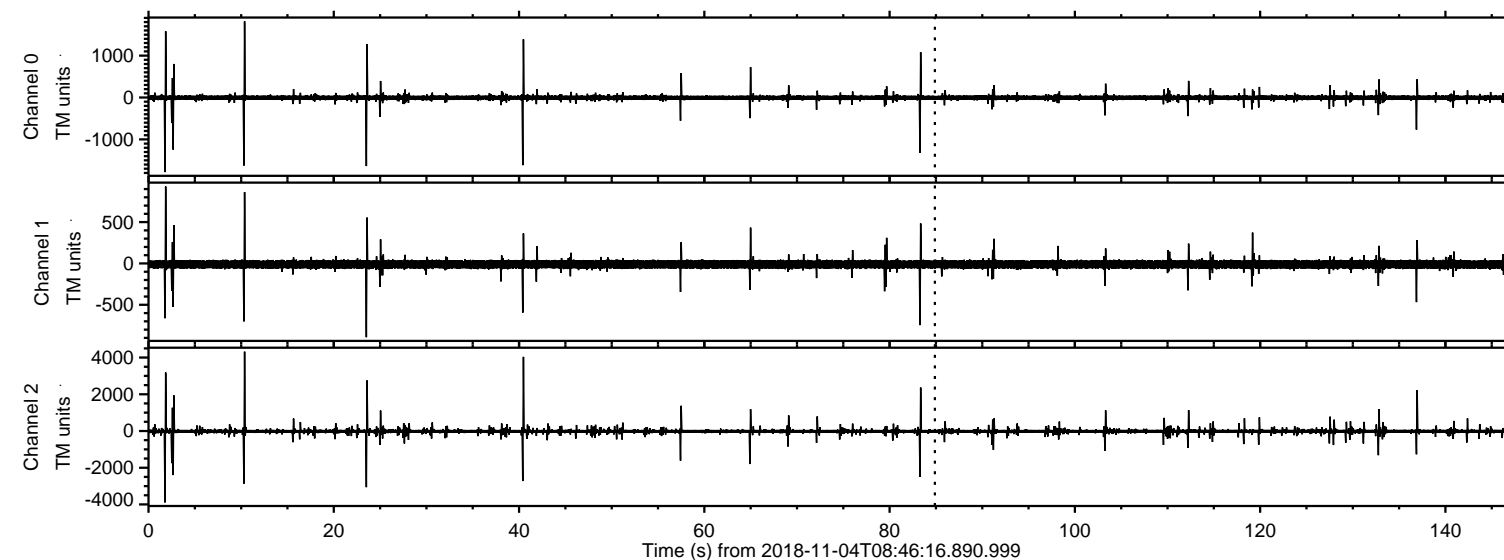
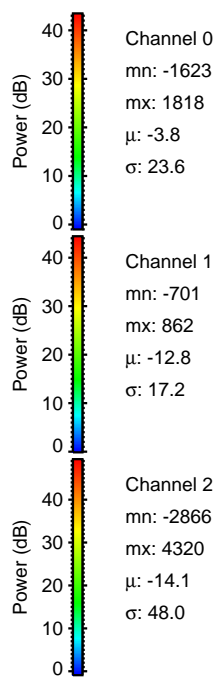
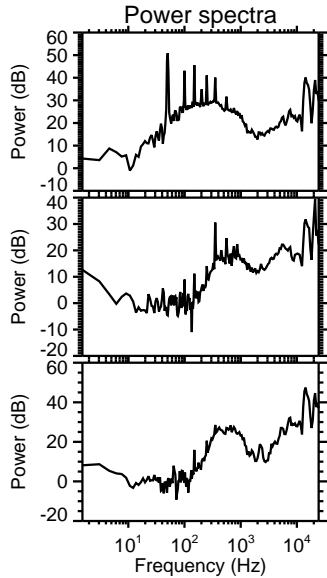
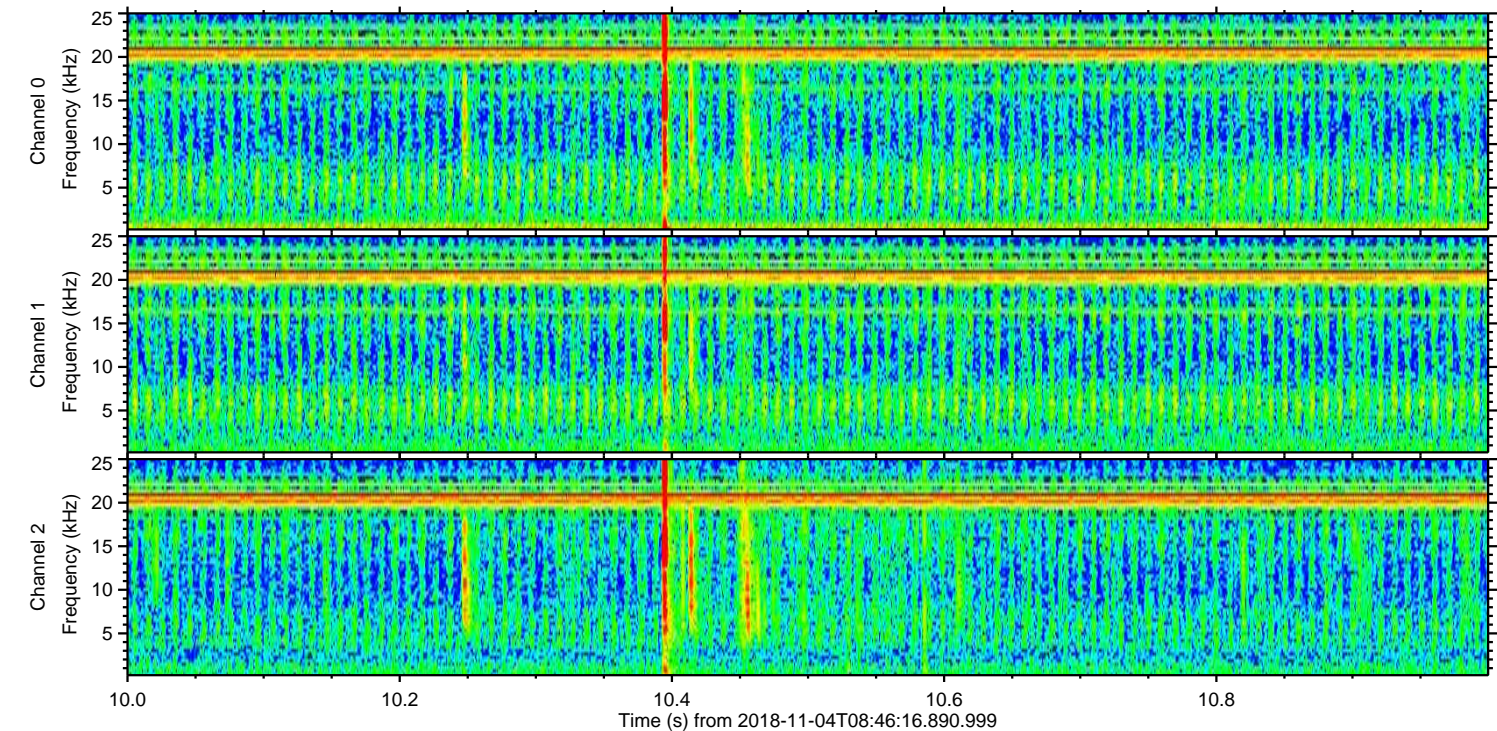
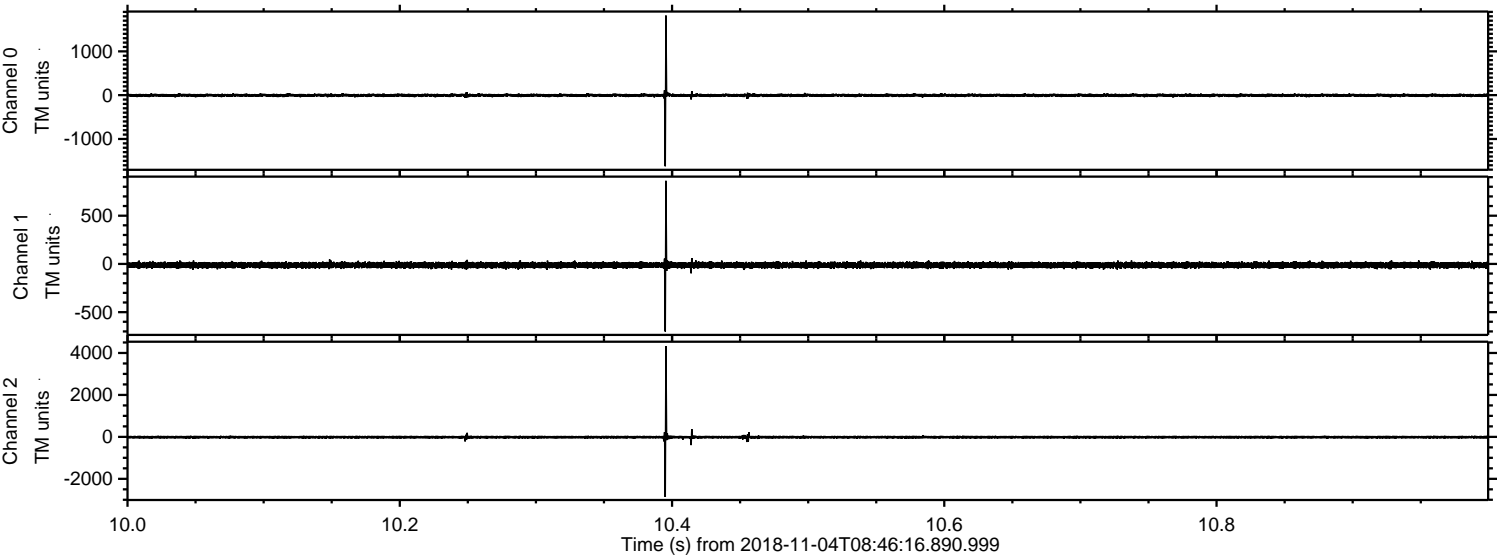


ELMAVAN 3D WAVEFORMS (Measured data sampled at 50 kHz) 50999 packets of 144 samples from 2018-11-04T08:46:16.890.999.

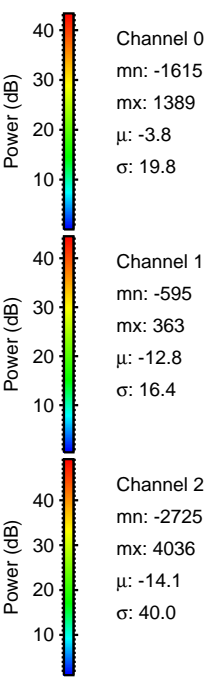
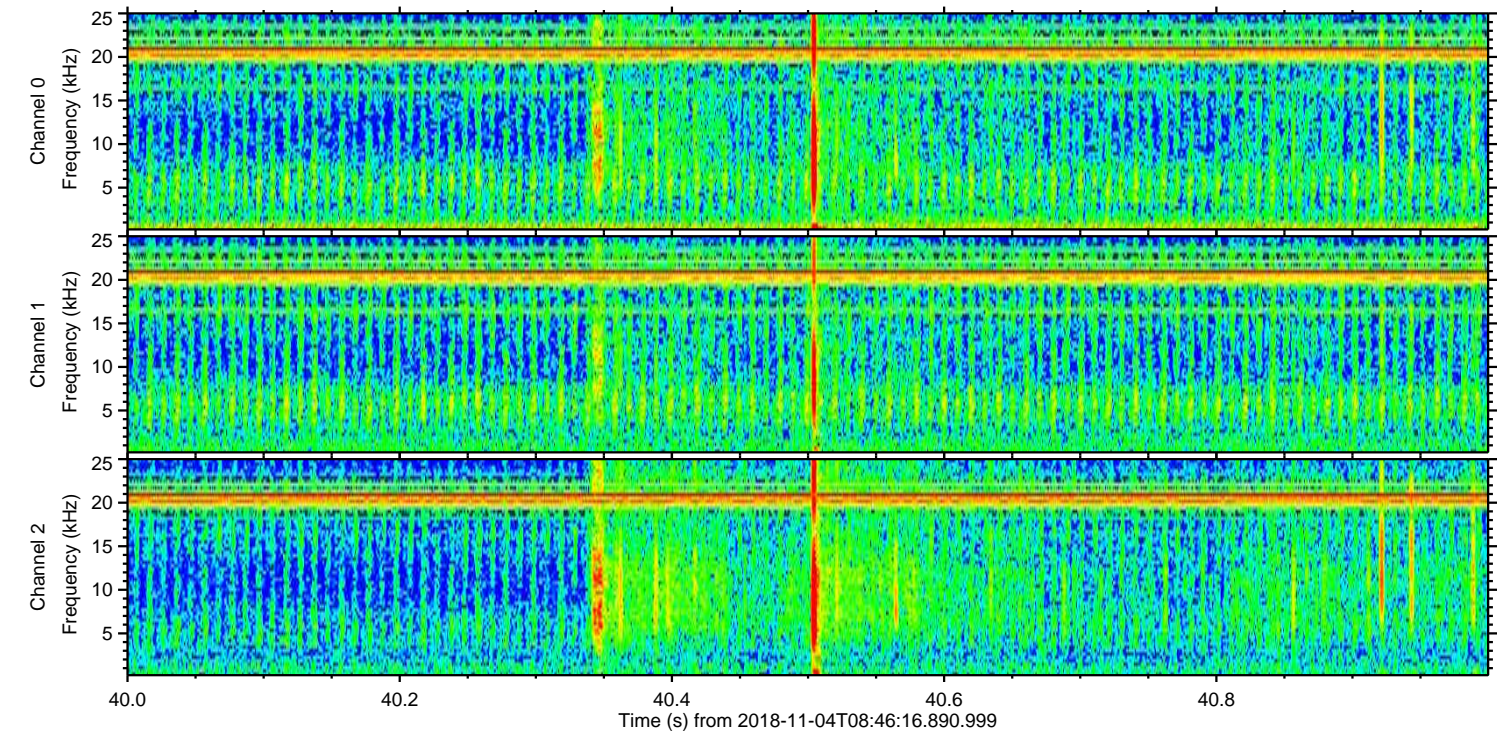
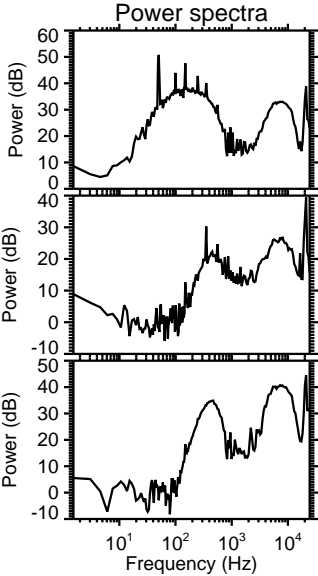
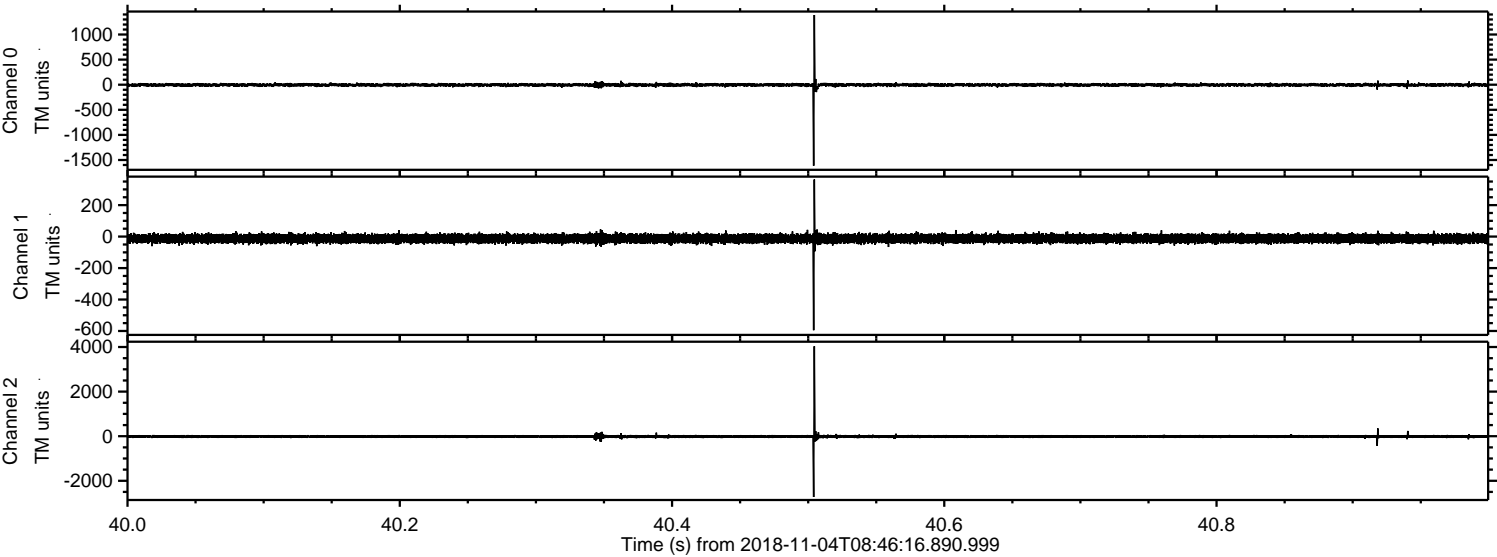
Processed Sun Nov 4 09:55:20 2018 by ELM ver.2012-10-06 from 001__elm20181104_084615__dat00.bin



Processed Sun Nov 4 09:55:30 2018 by ELM ver.2012-10-06 from 001__elm20181104_084615__dat00.bin

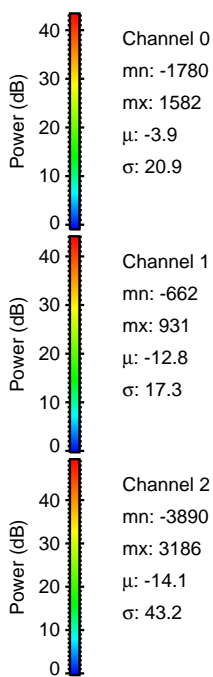
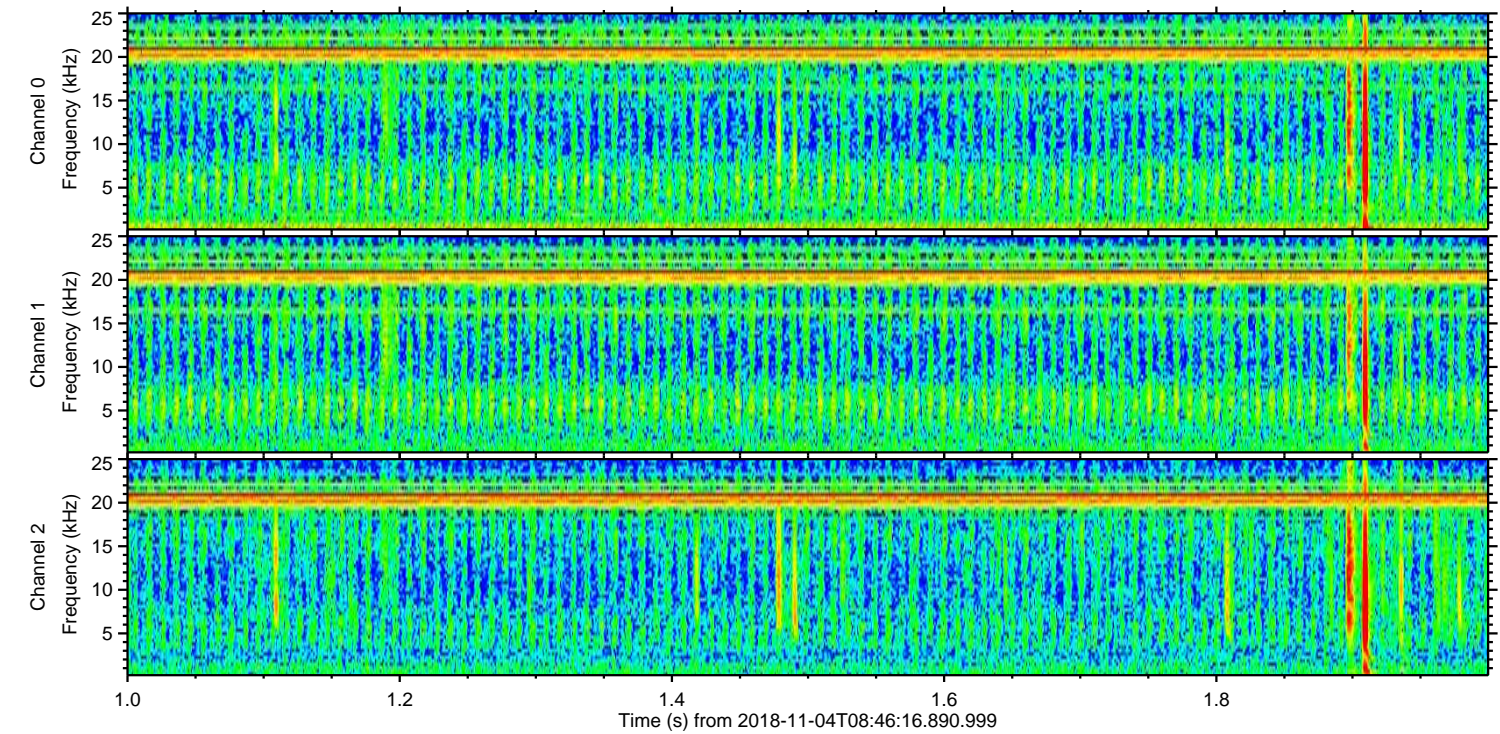
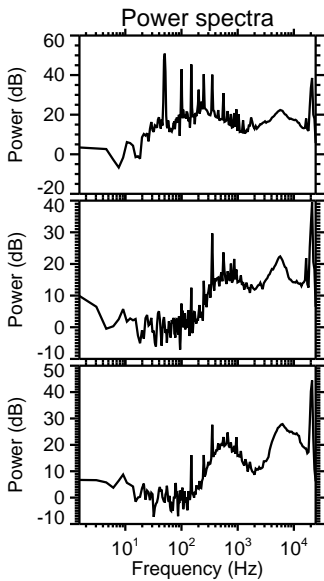
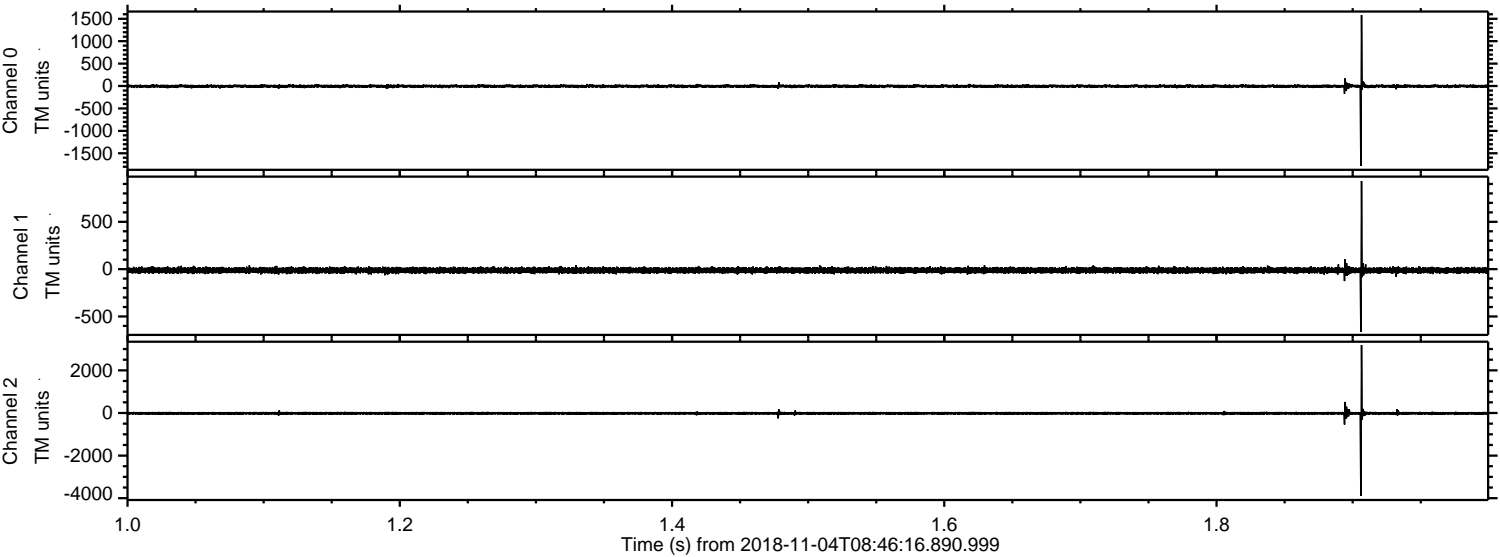


Processed Sun Nov 4 09:55:31 2018 by ELM ver.2012-10-06 from 001__elm20181104_084615__dat00.bin

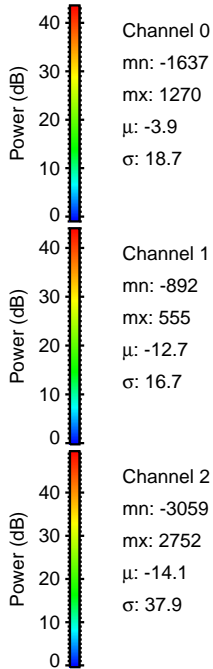
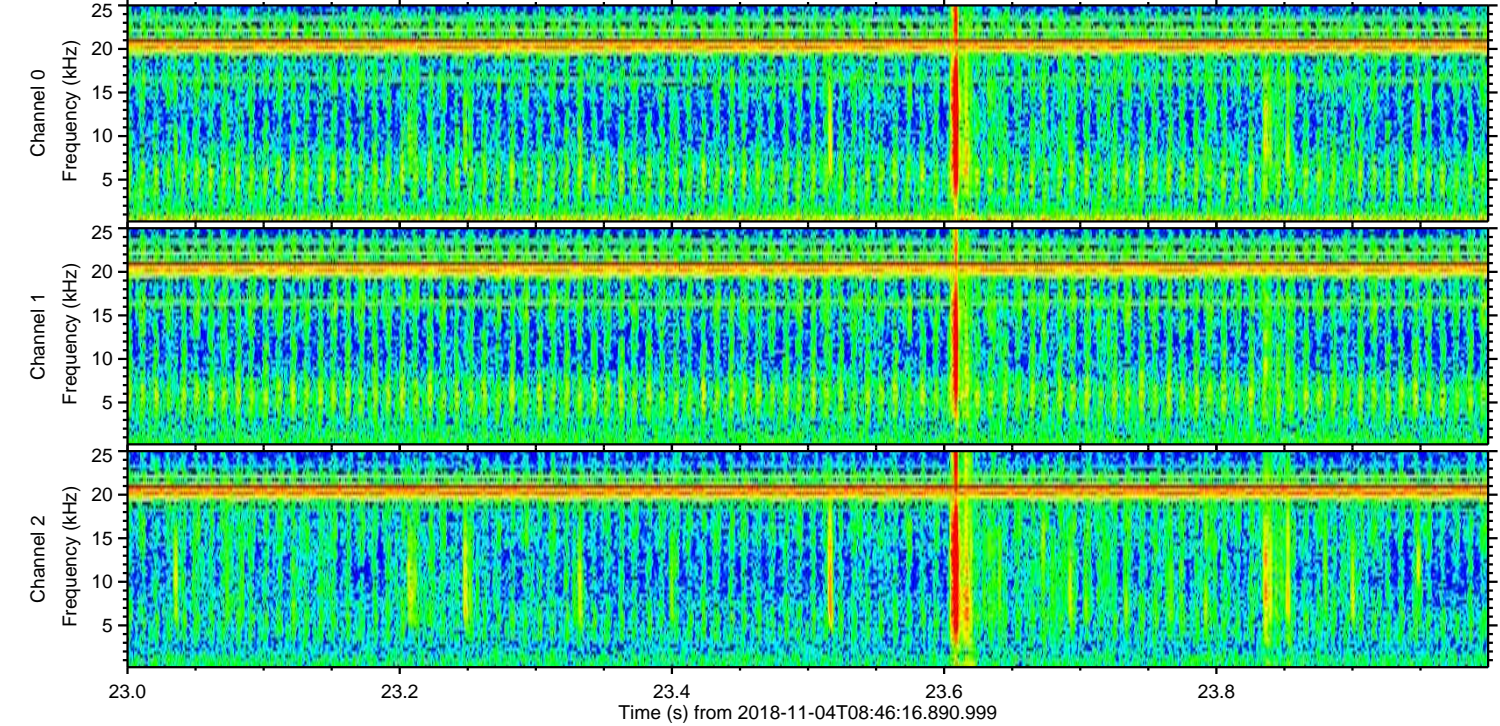
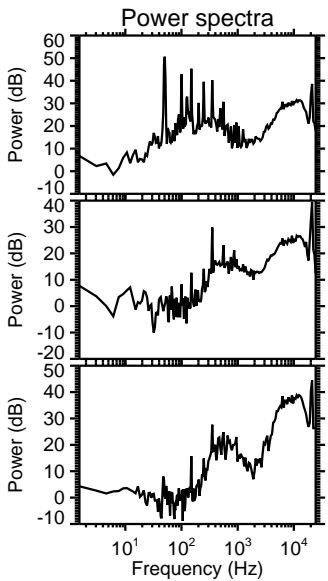
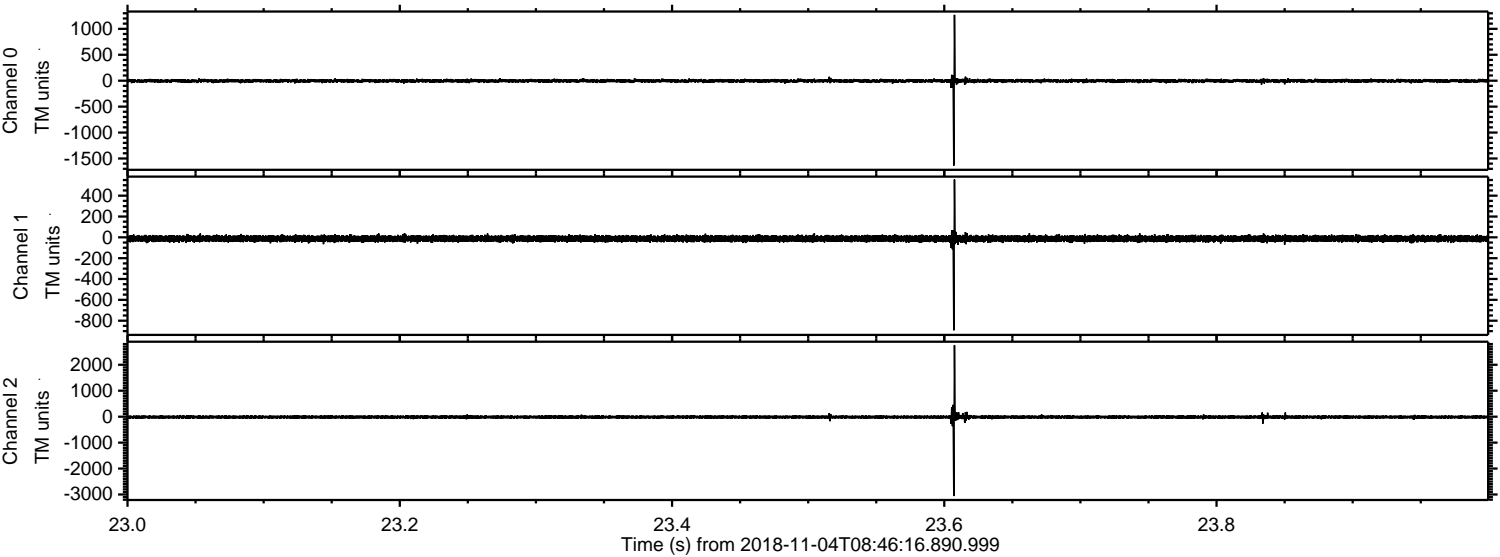


ELMAVAN 3D WAVEFORMS (Measured data sampled at 50 kHz) 50999 packets of 144 samples from 2018-11-04T08:46:16.890.999. Part 2/147

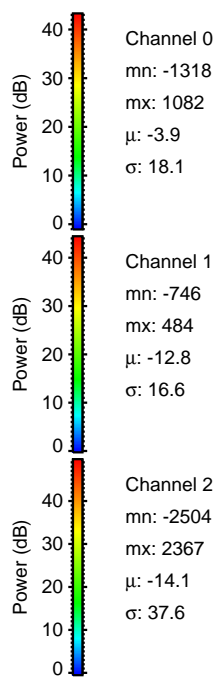
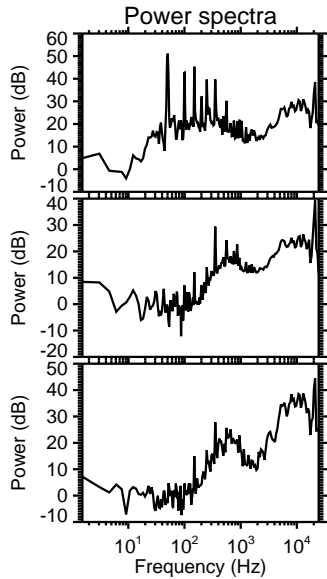
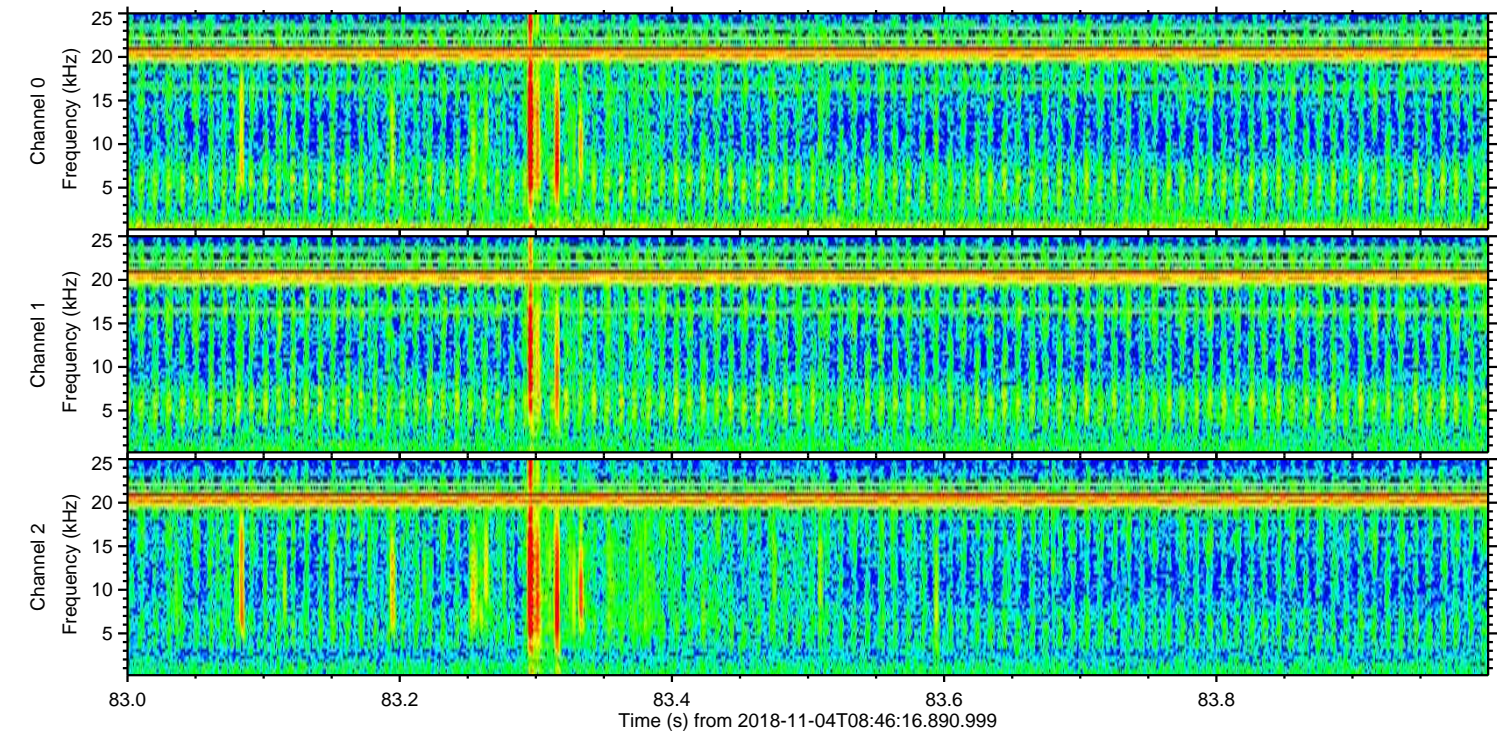
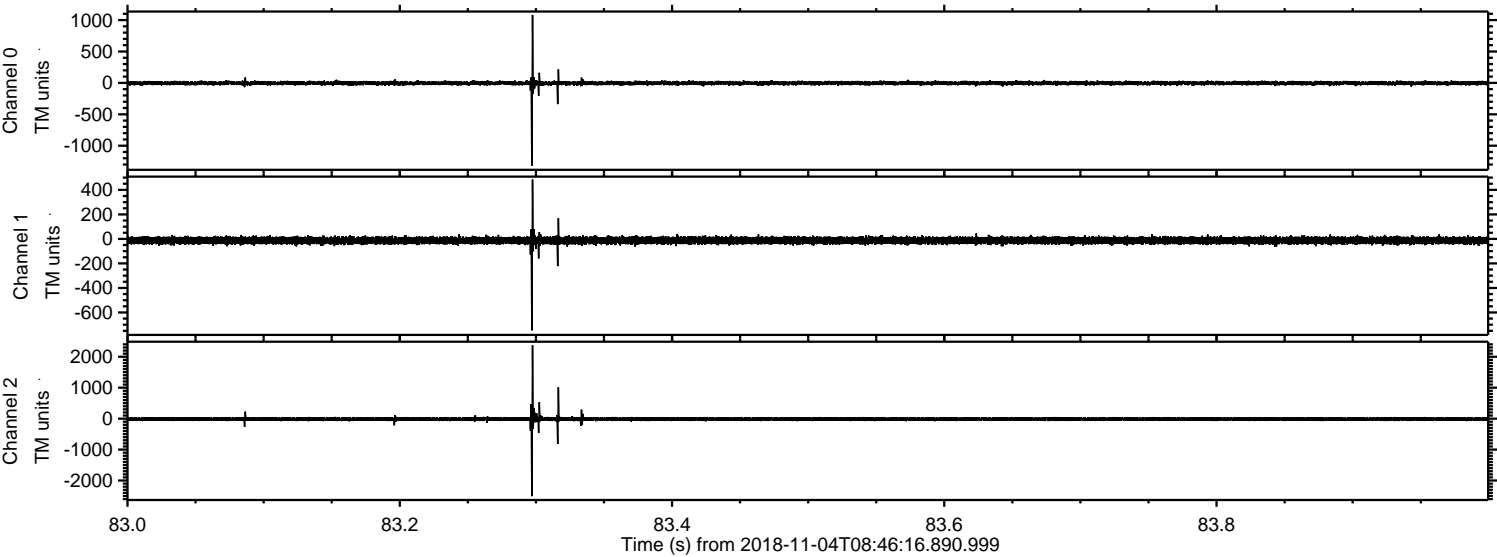
Processed Sun Nov 4 09:55:32 2018 by ELM ver.2012-10-06 from 001__elm20181104_084615__dat00.bin



Processed Sun Nov 4 09:55:33 2018 by ELM ver.2012-10-06 from 001__elm20181104_084615__dat00.bin

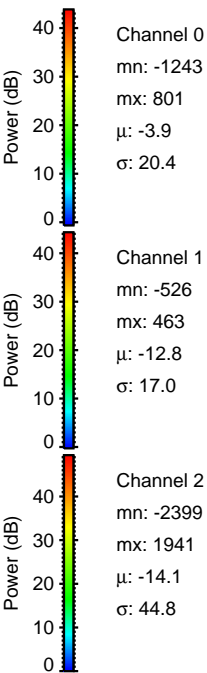
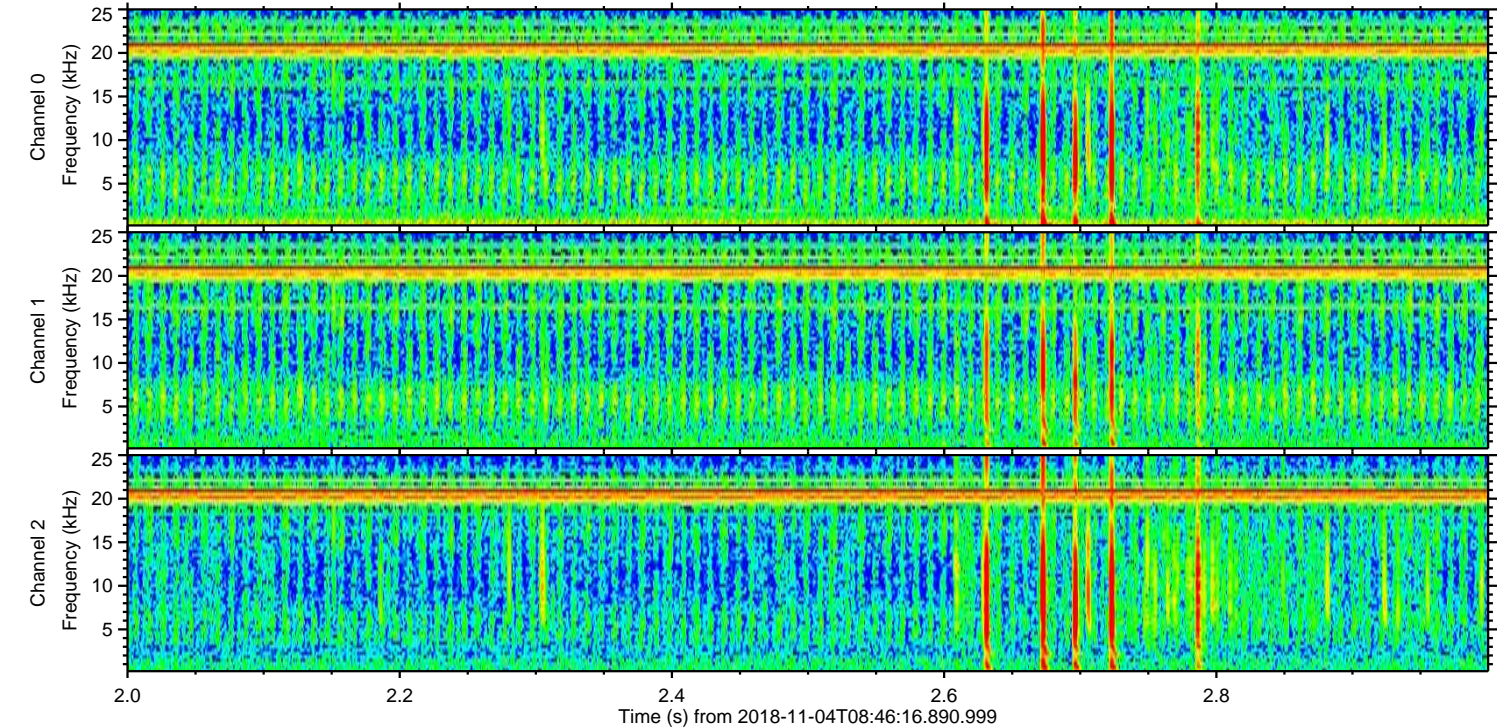
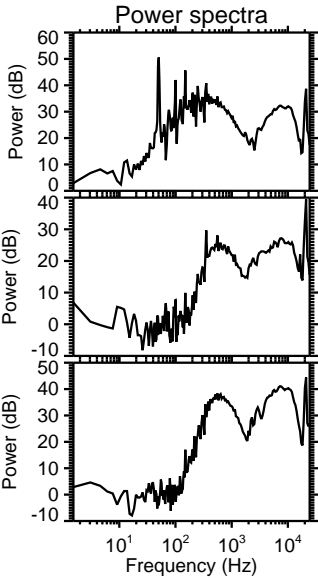
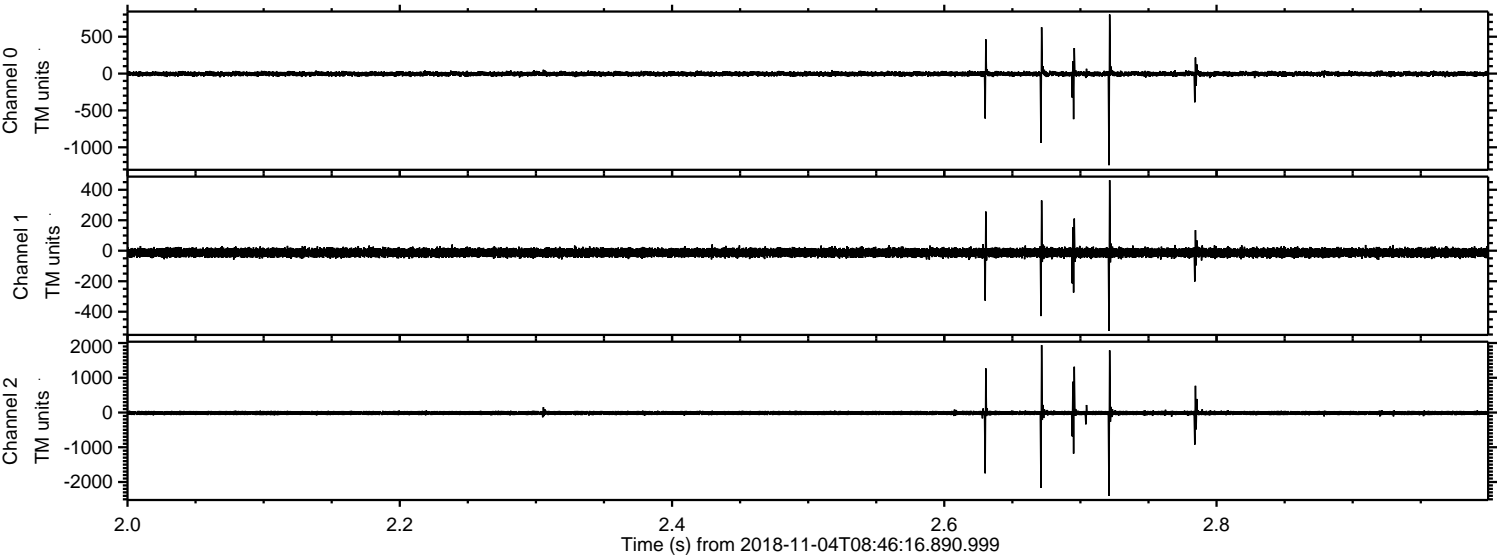


Processed Sun Nov 4 09:55:34 2018 by ELM ver.2012-10-06 from 001__elm20181104_084615__dat00.bin



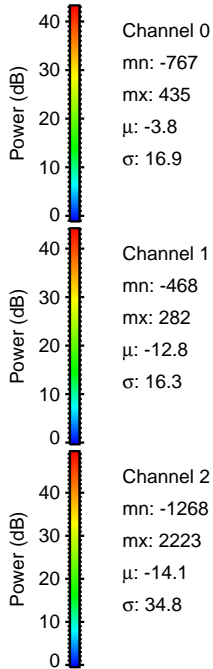
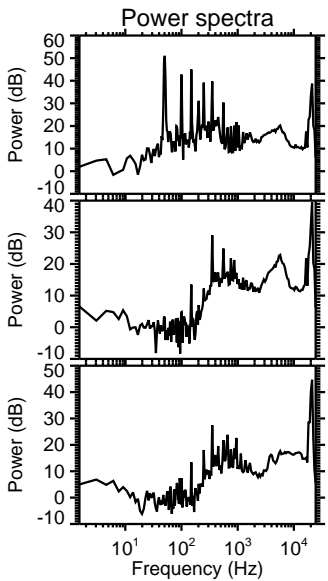
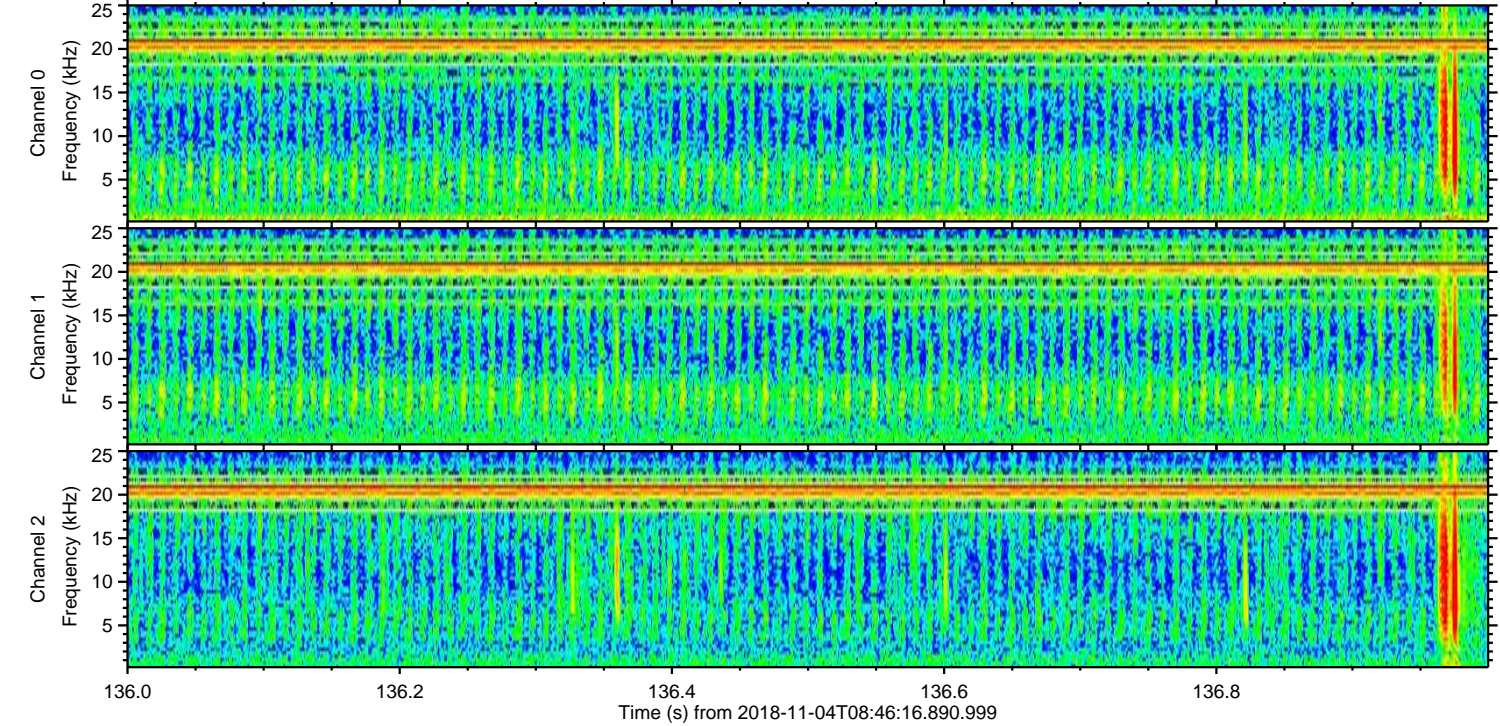
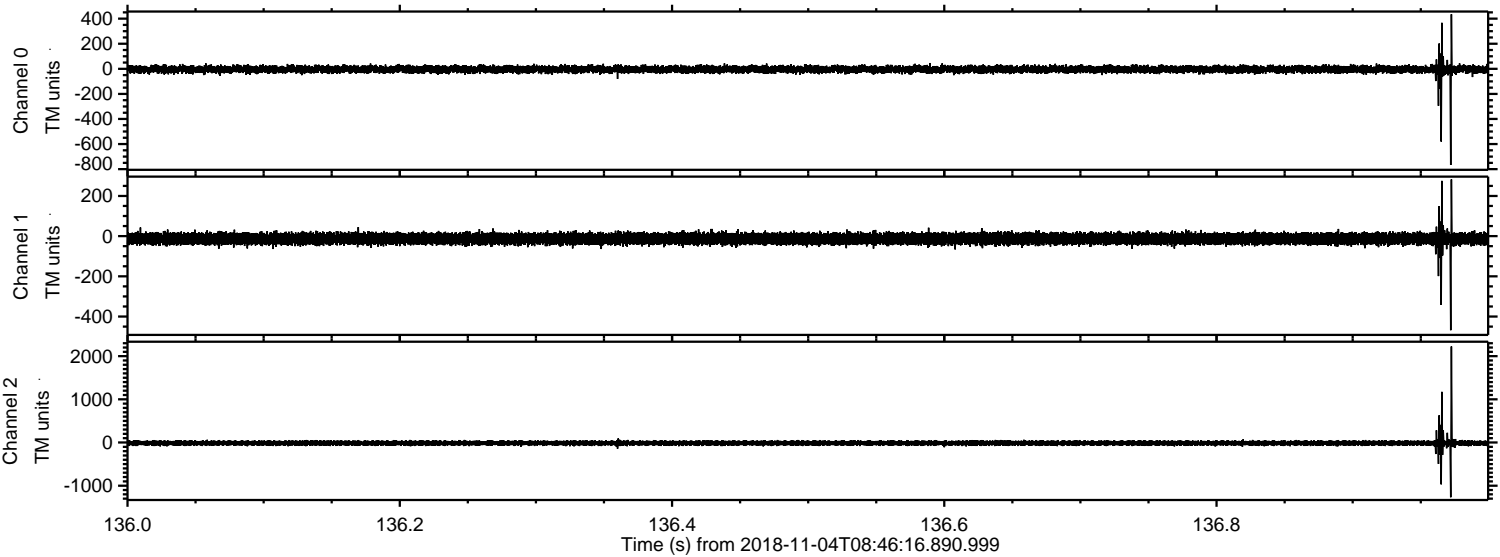
ELMAVAN 3D WAVEFORMS (Measured data sampled at 50 kHz) 50999 packets of 144 samples from 2018-11-04T08:46:16.890.999. Part 3/147

Processed Sun Nov 4 09:55:35 2018 by ELM ver.2012-10-06 from 001__elm20181104_084615__dat00.bin

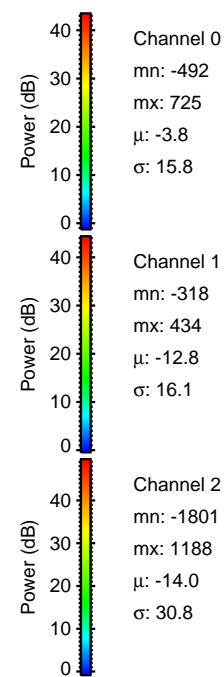
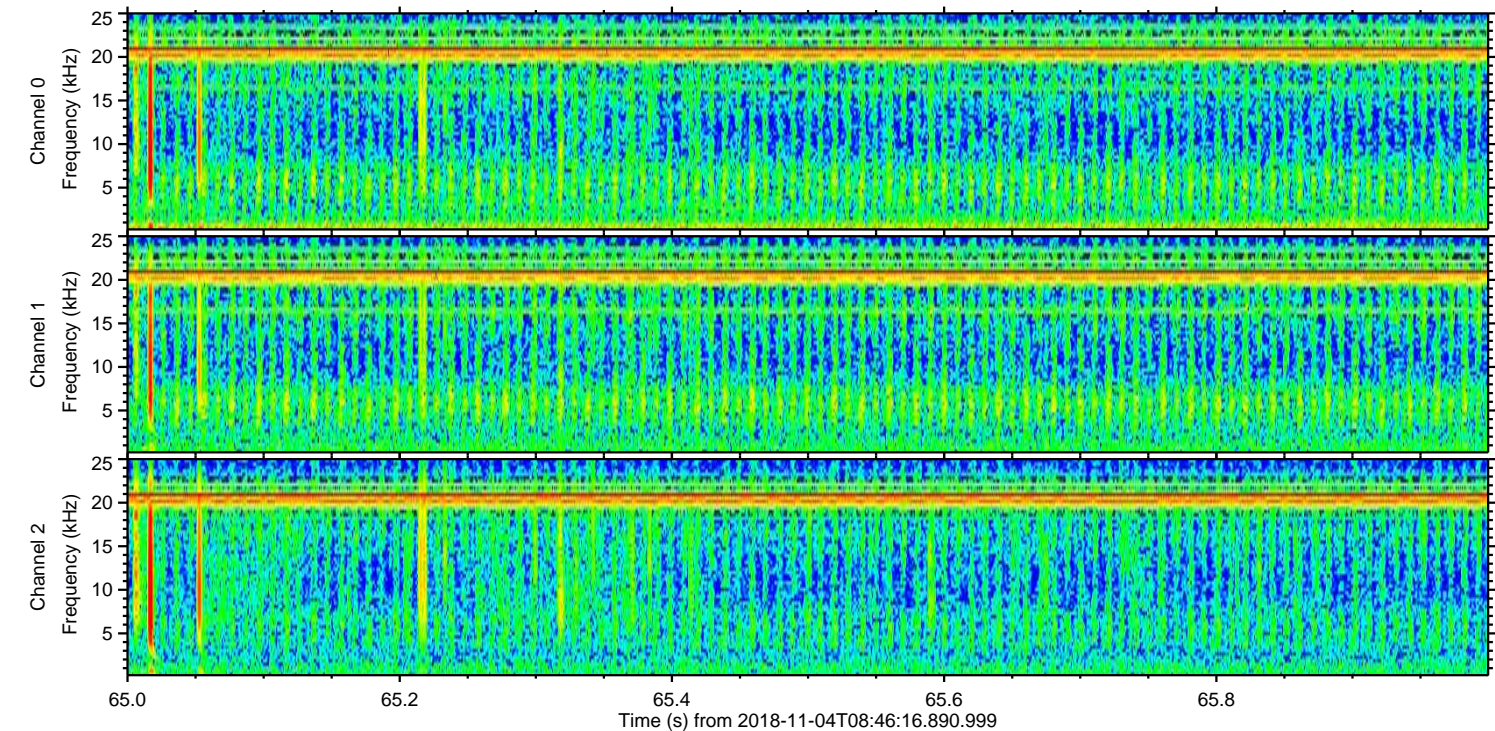
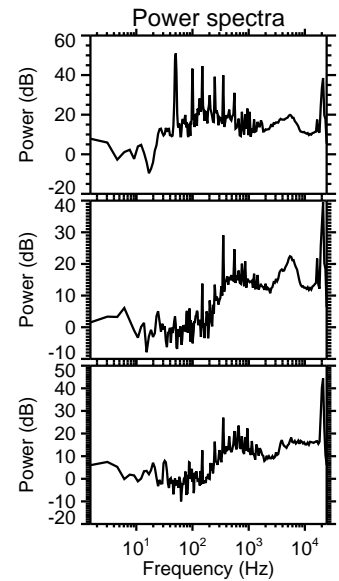
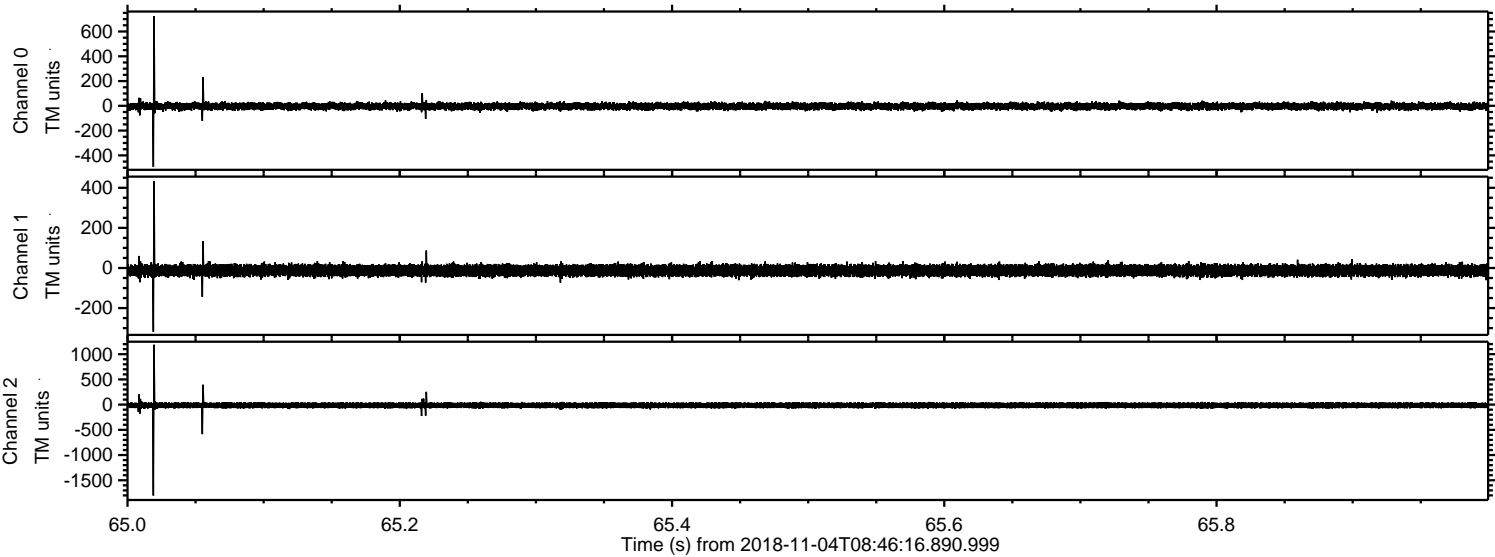


ELMAVAN 3D WAVEFORMS (Measured data sampled at 50 kHz) 50999 packets of 144 samples from 2018-11-04T08:46:16.890.999. Part 137/147

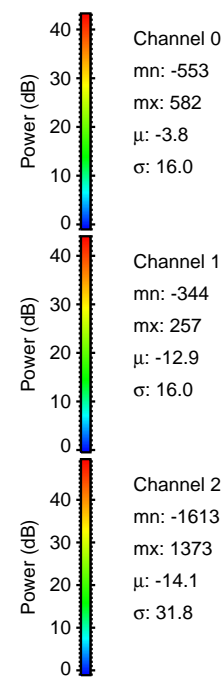
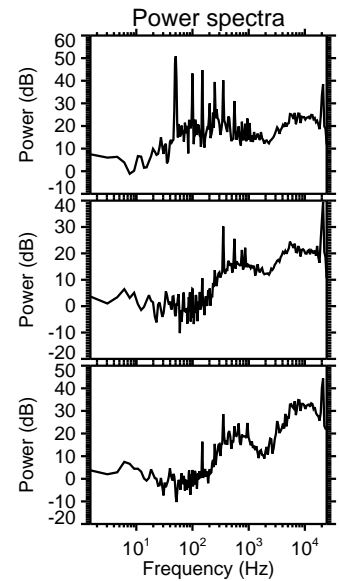
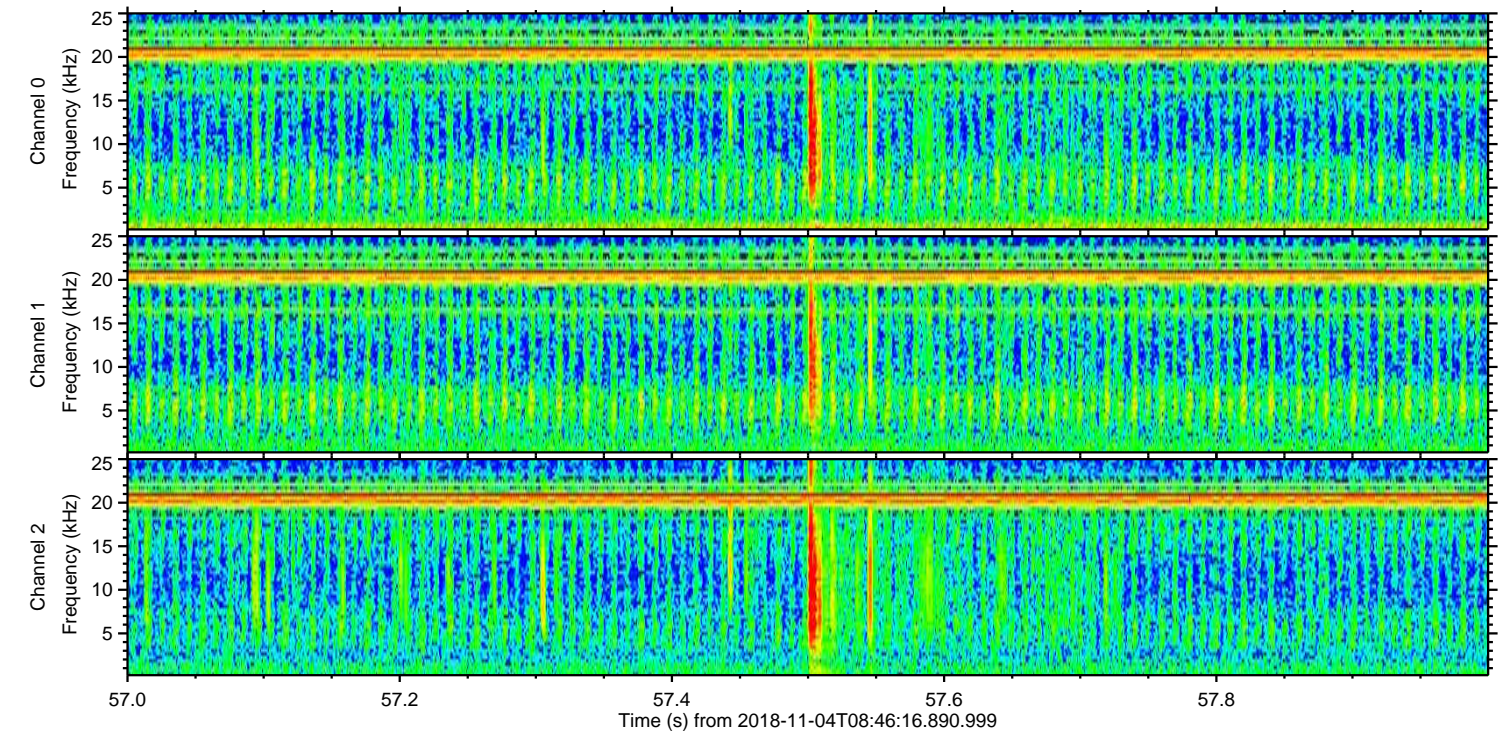
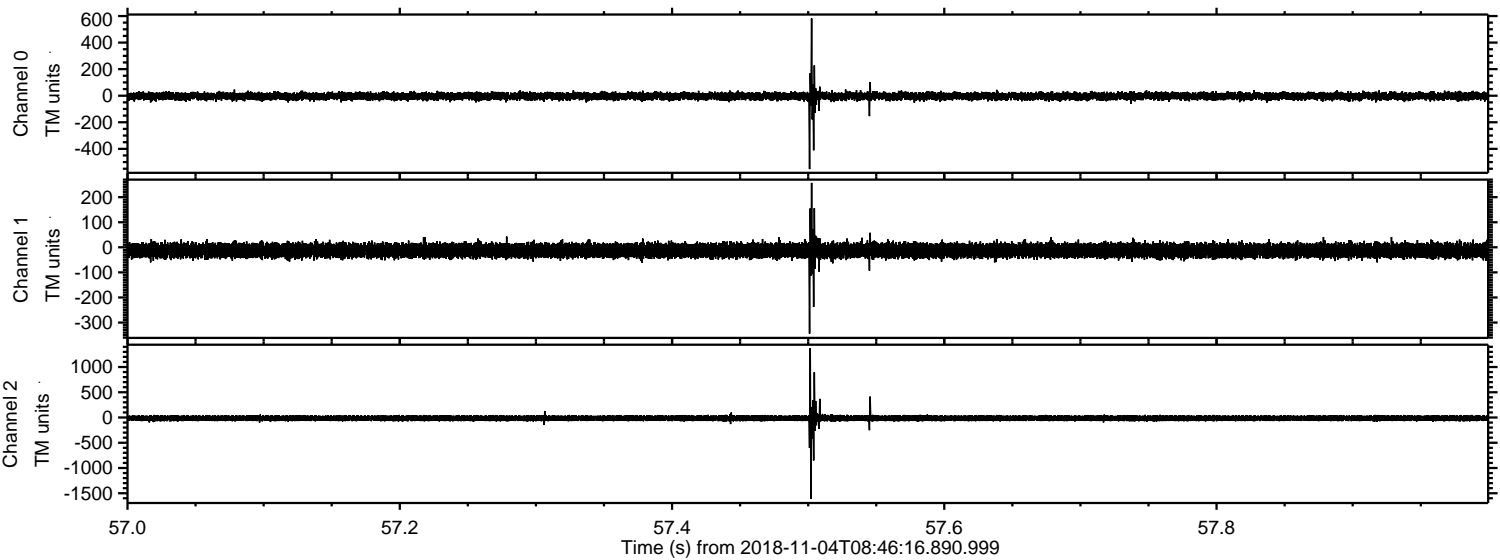
Processed Sun Nov 4 09:55:36 2018 by ELM ver.2012-10-06 from 001__elm20181104_084615__dat00.bin



Processed Sun Nov 4 09:55:37 2018 by ELM ver.2012-10-06 from 001__elm20181104_084615__dat00.bin



Processed Sun Nov 4 09:55:38 2018 by ELM ver.2012-10-06 from 001__elm20181104_084615__dat00.bin



Channel 0
mn: -553
mx: 582
 μ : -3.8
 σ : 16.0

Channel 1
mn: -344
mx: 257
 μ : -12.9
 σ : 16.0

Channel 2
mn: -1613
mx: 1373
 μ : -14.1
 σ : 31.8

