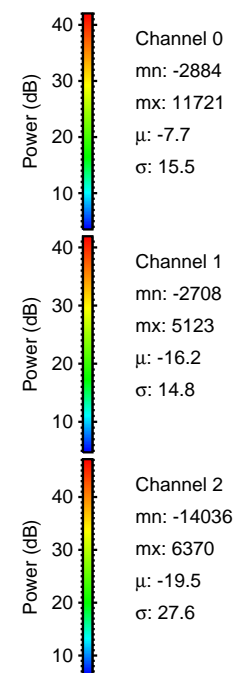
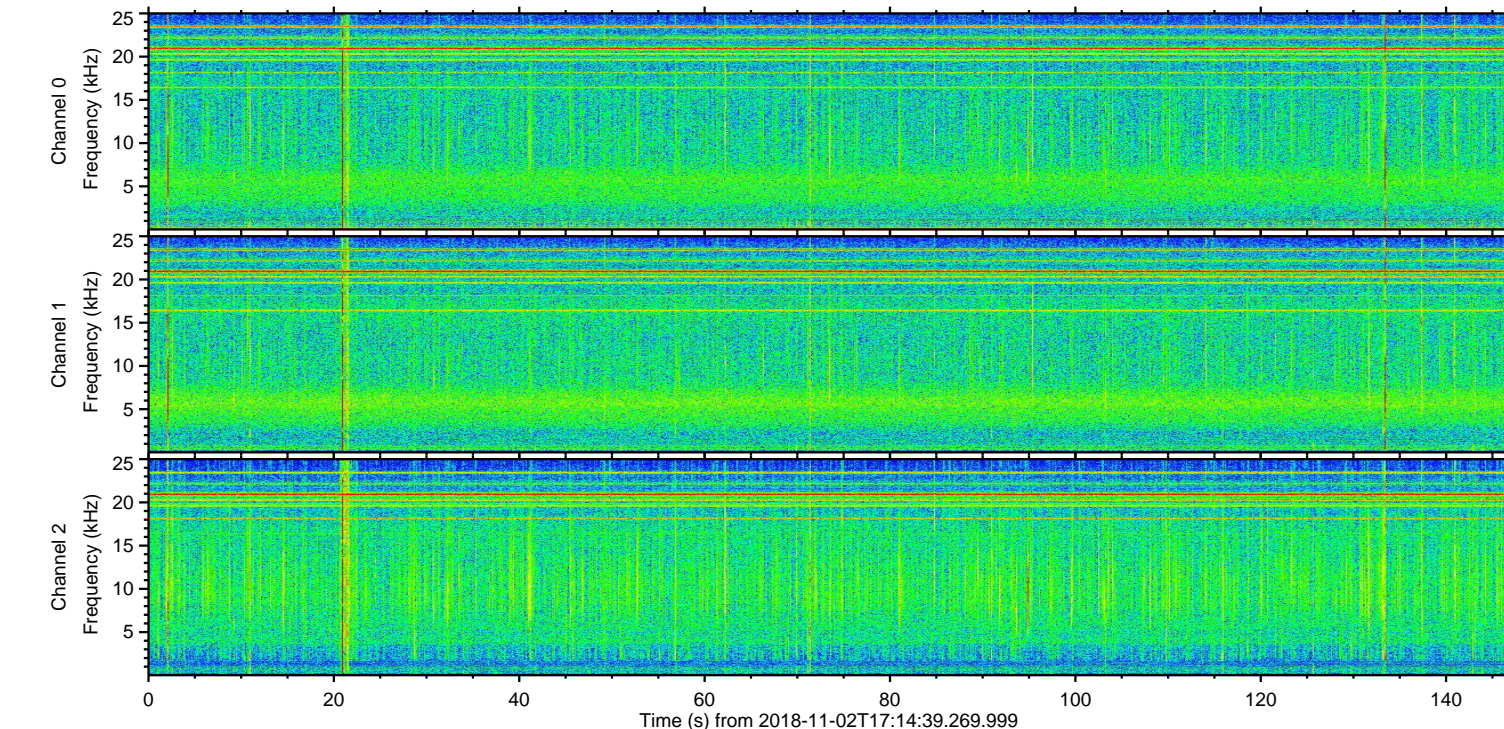
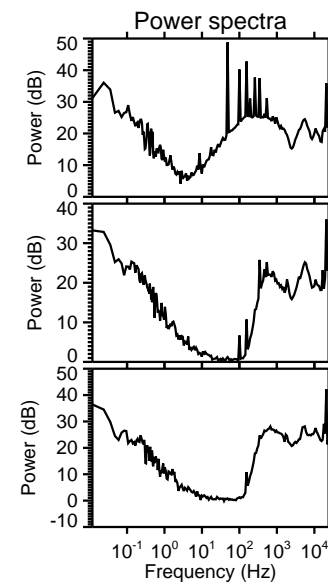
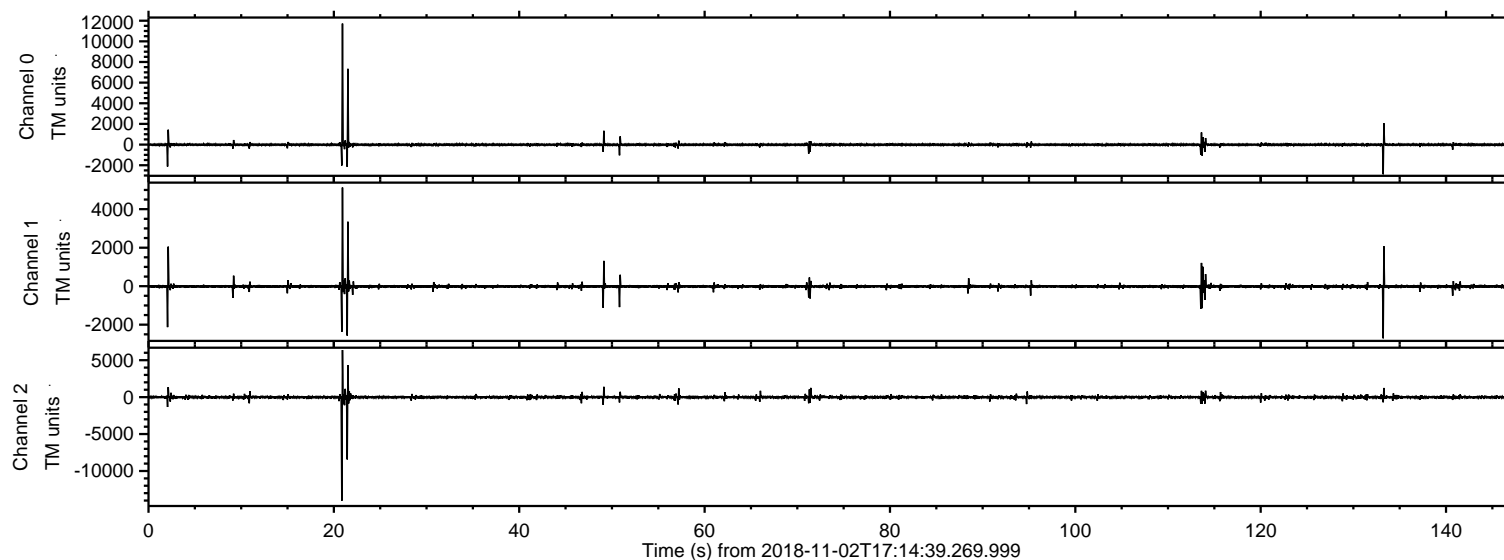


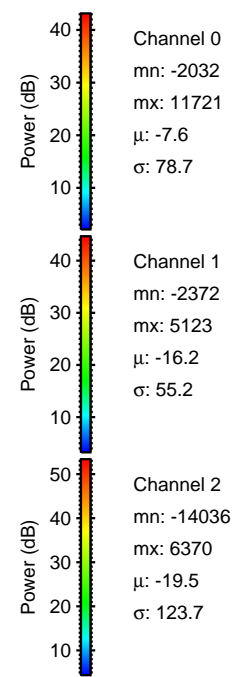
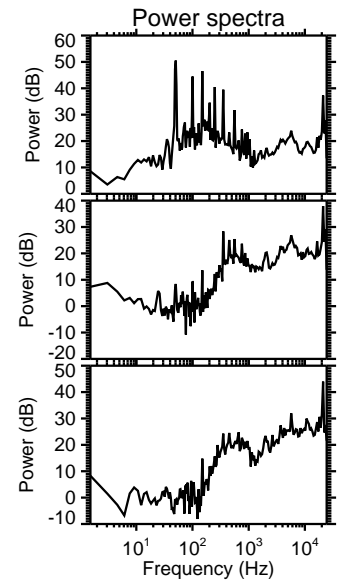
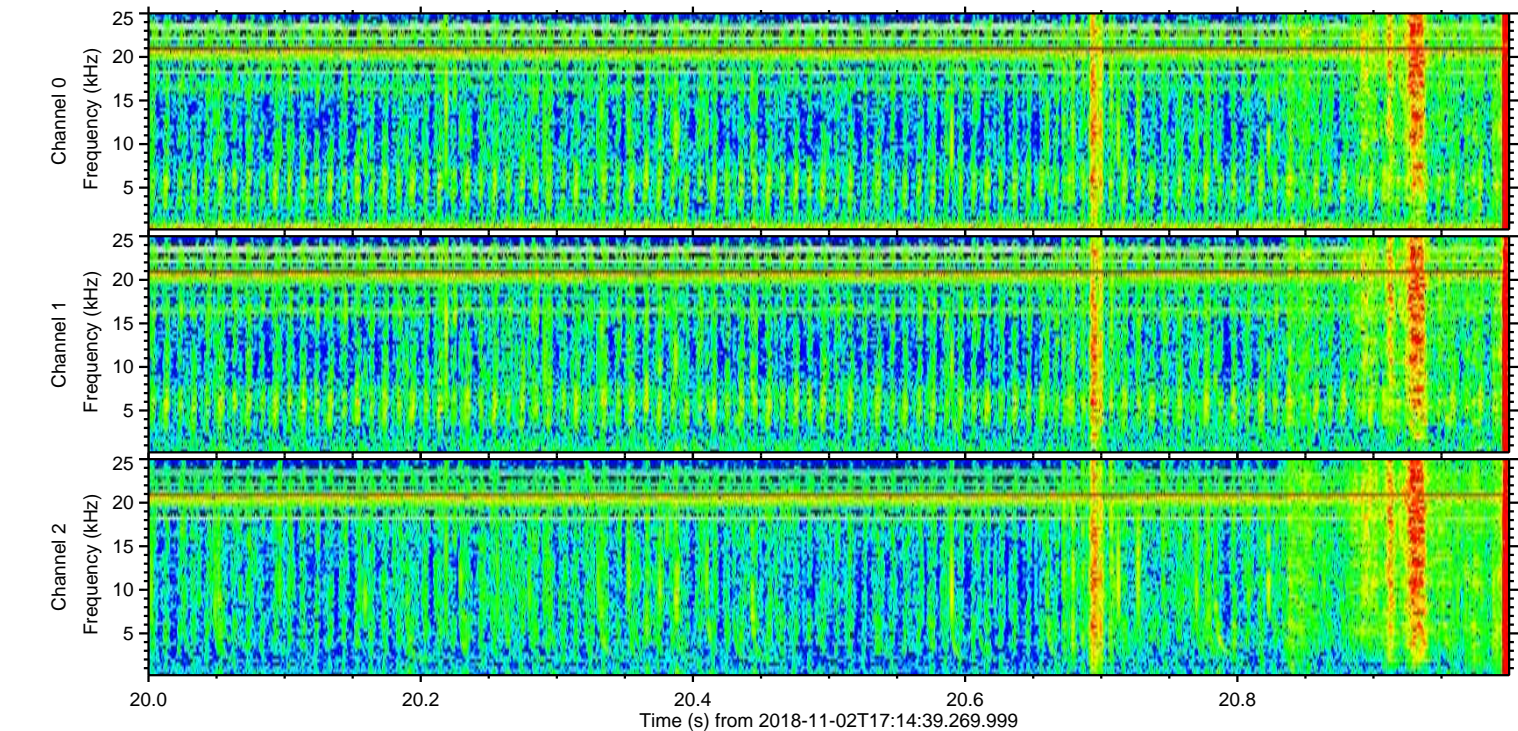
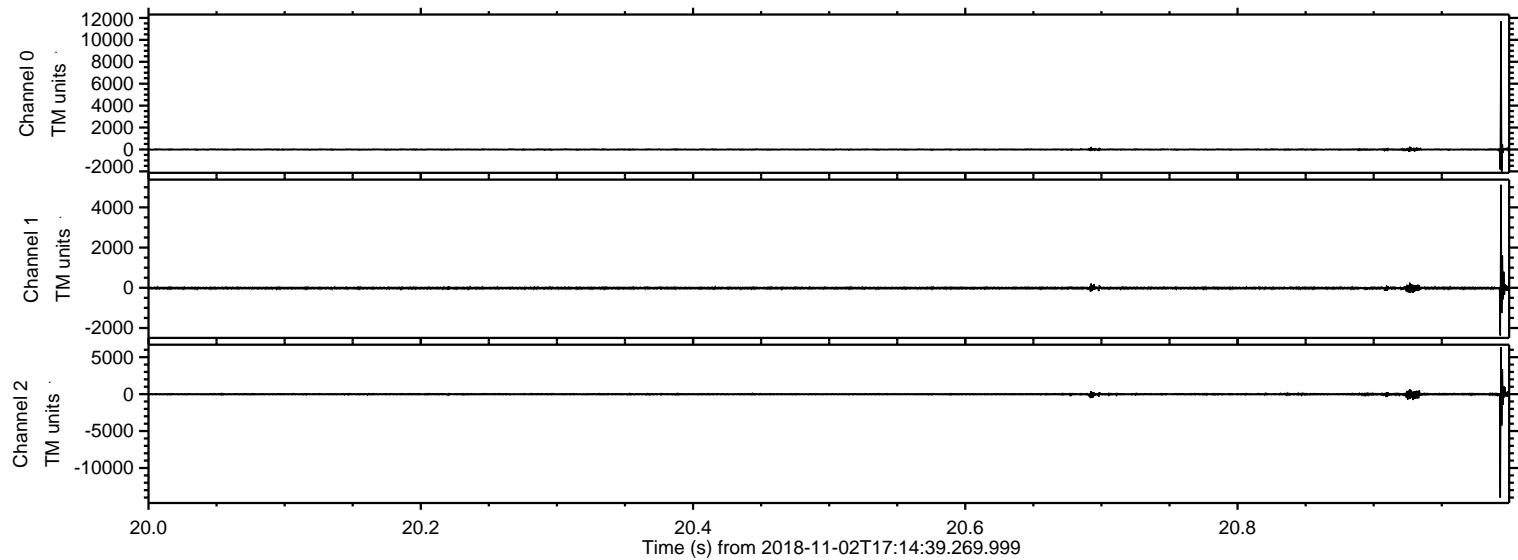
ELMAVAN 3D WAVEFORMS (Measured data sampled at 50 kHz) 51000 packets of 144 samples from 2018-11-02T17:14:39.269.999.

Processed Fri Nov 2 18:23:04 2018 by ELM ver.2012-10-06 from 001__elm20181102_171438__dat00.bin

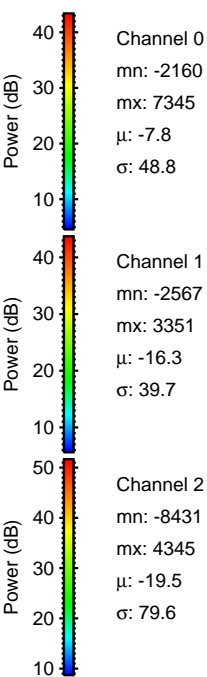
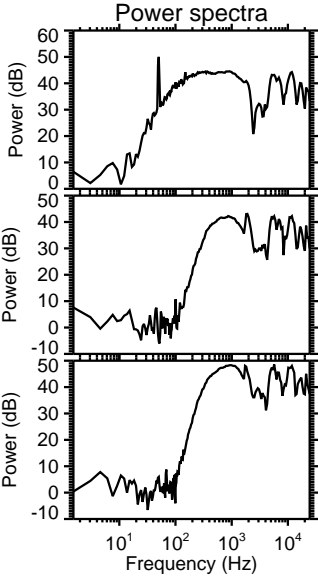
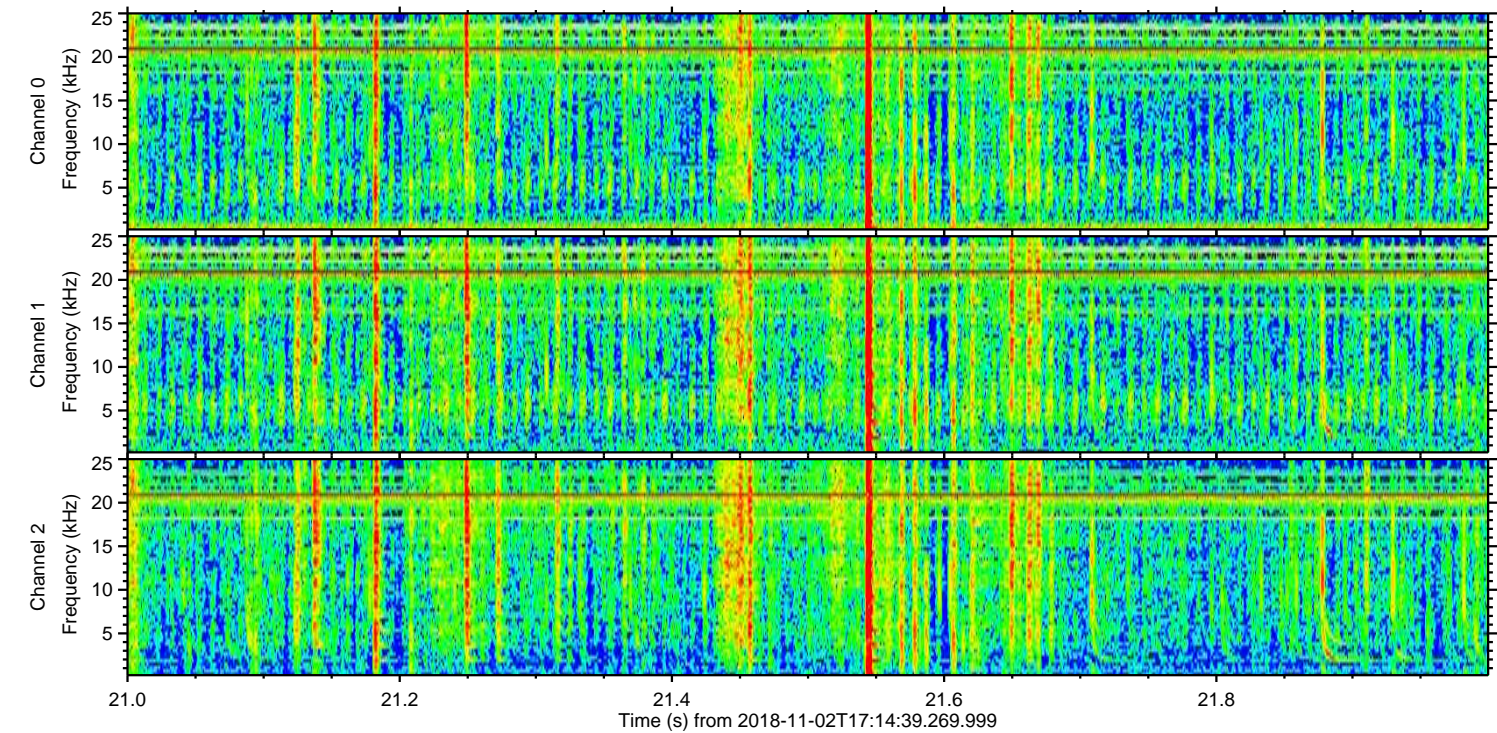
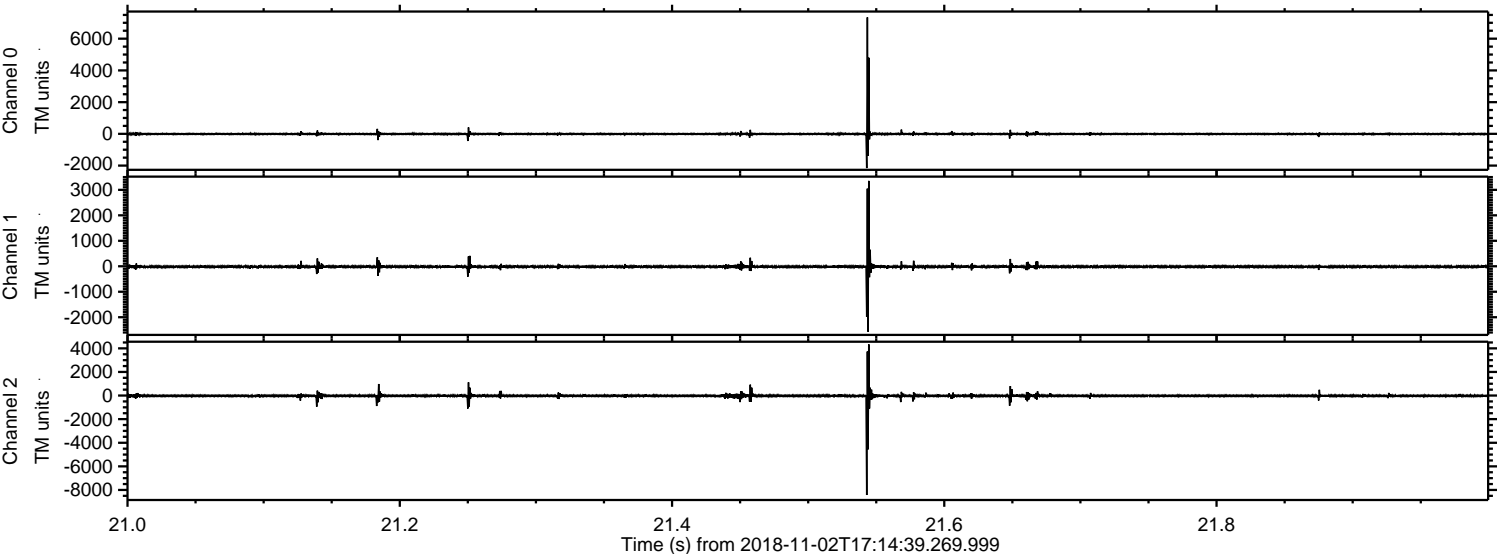


ELMAVAN 3D WAVEFORMS (Measured data sampled at 50 kHz) 51000 packets of 144 samples from 2018-11-02T17:14:39.269.999. Part 21/147

Processed Fri Nov 2 18:23:12 2018 by ELM ver.2012-10-06 from 001__elm20181102_171438__dat00.bin

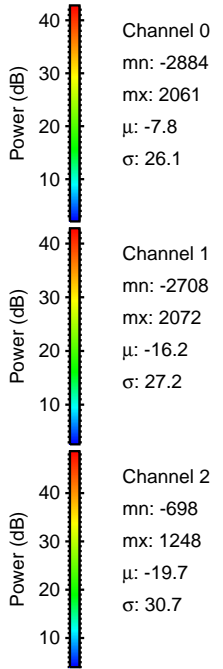
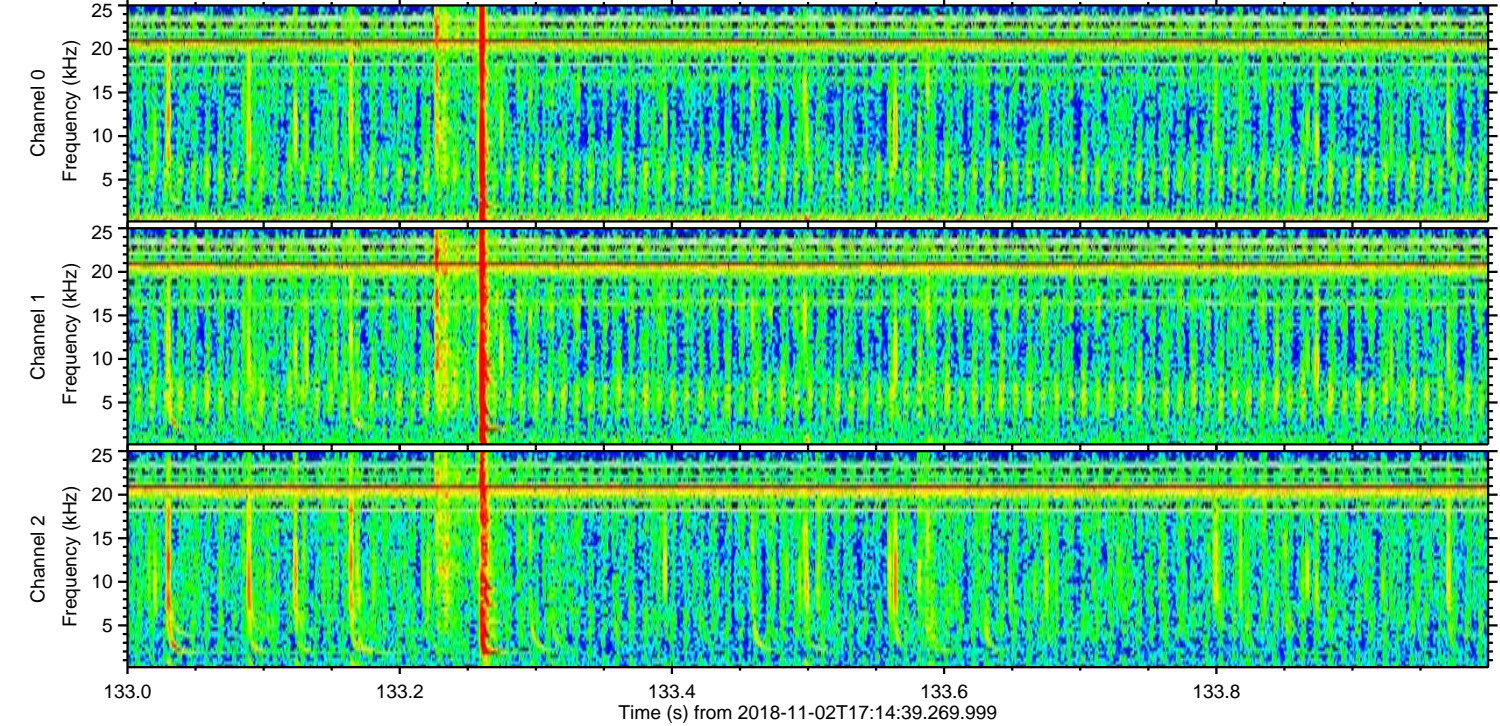
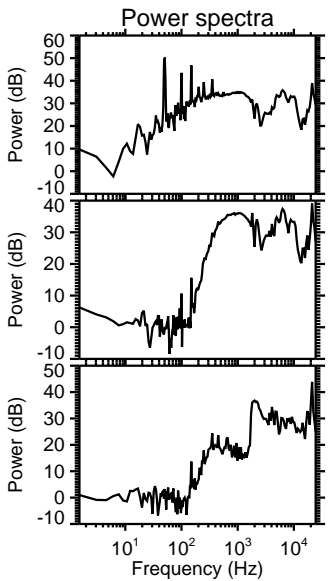
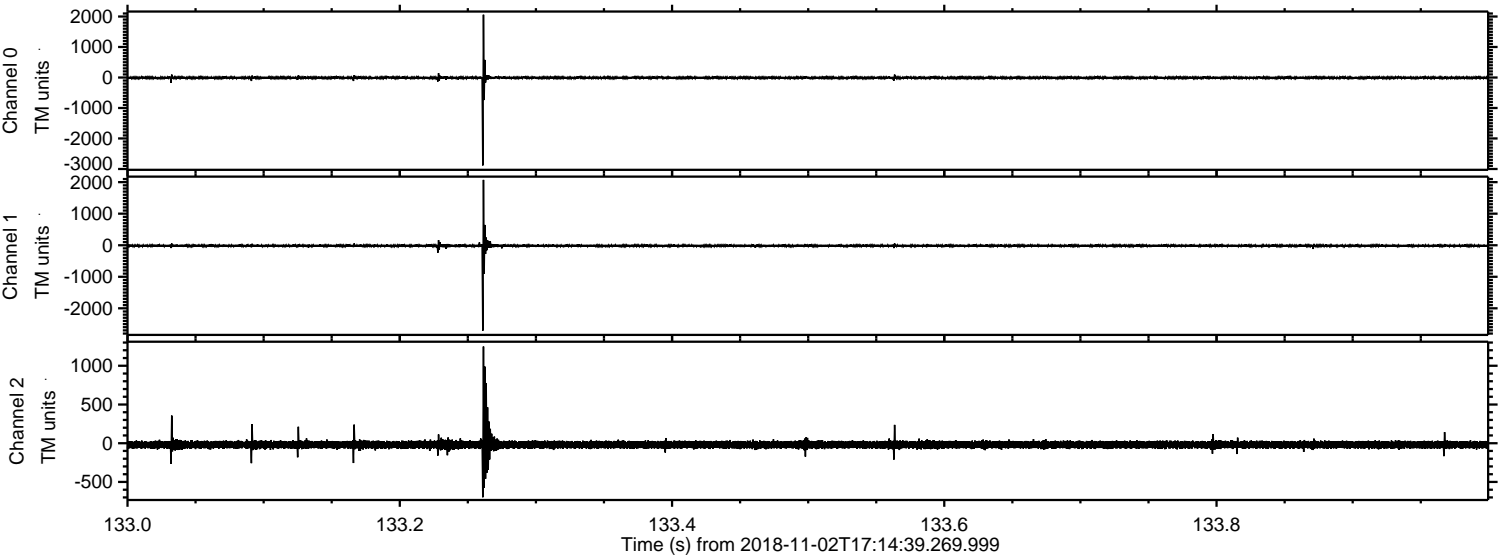


Processed Fri Nov 2 18:23:13 2018 by ELM ver.2012-10-06 from 001__elm20181102_171438__dat00.bin

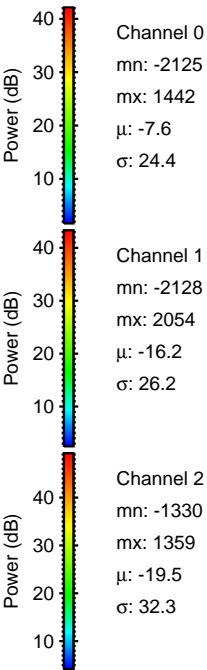
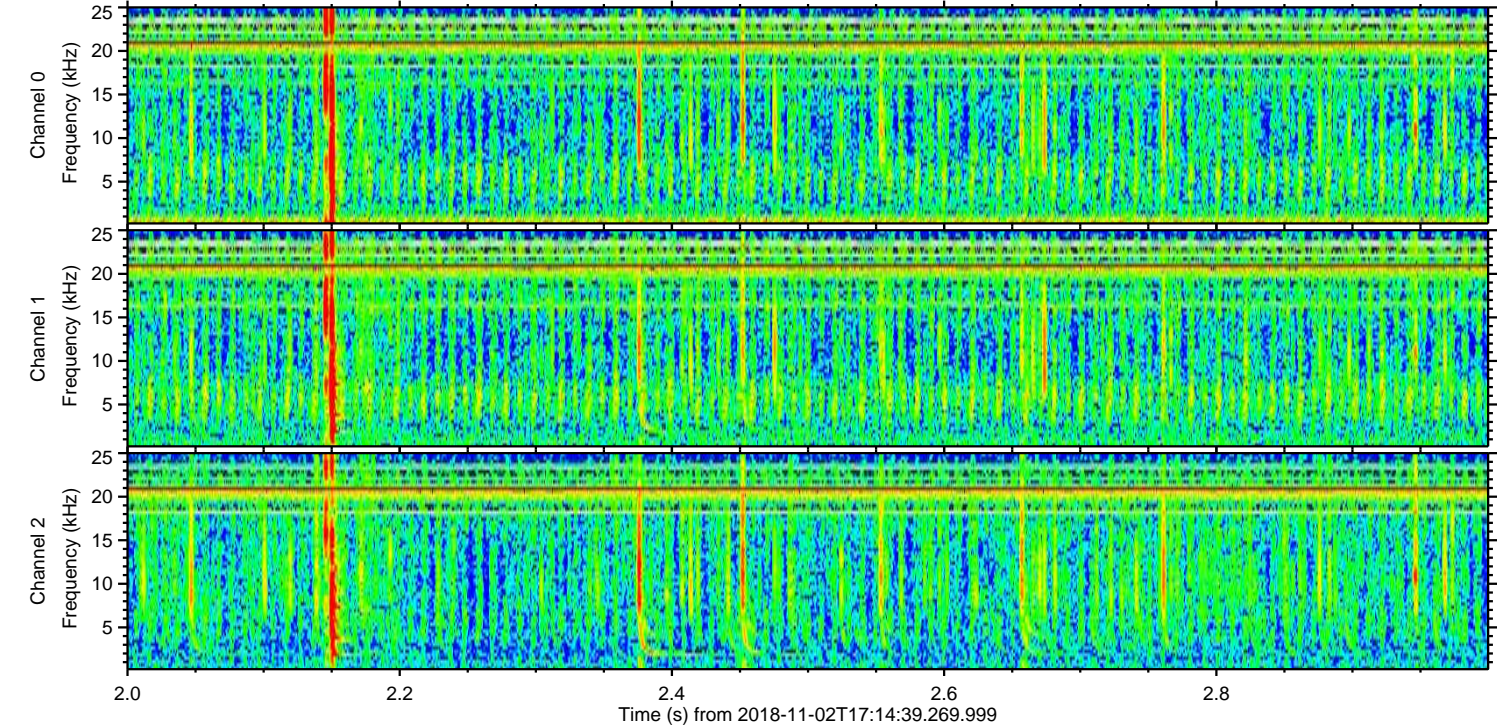
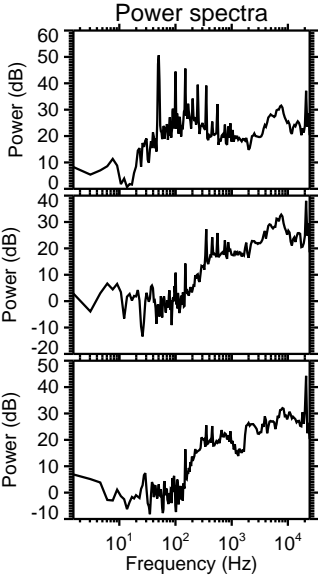
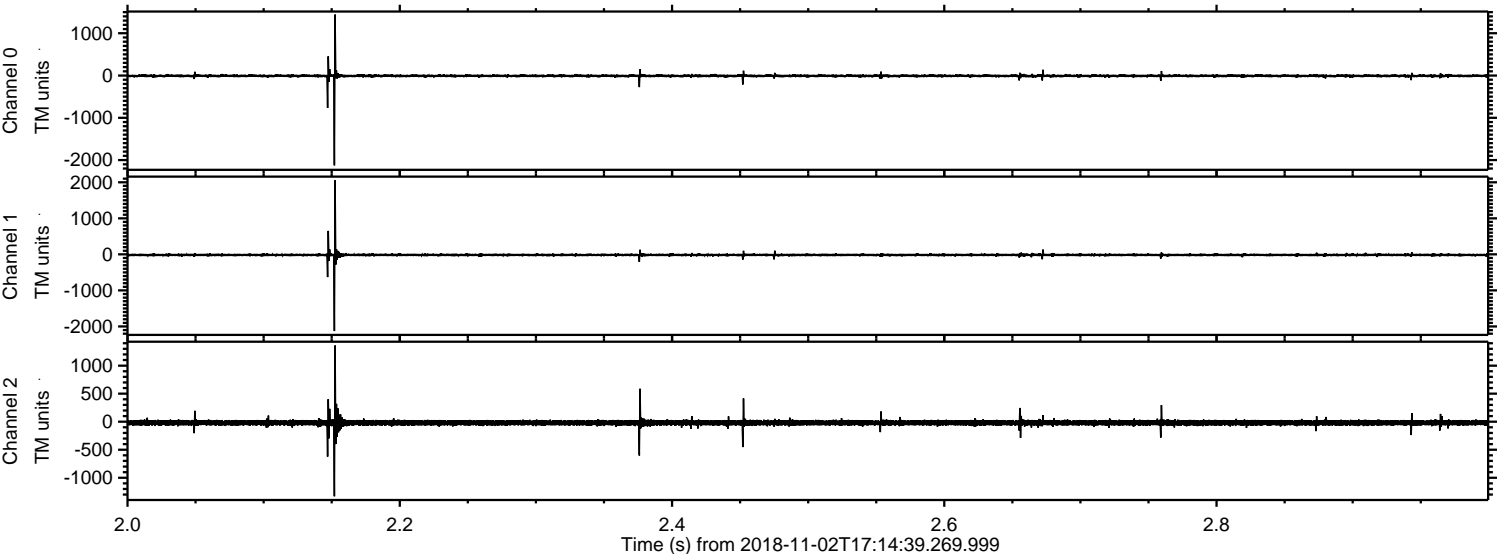


ELMAVAN 3D WAVEFORMS (Measured data sampled at 50 kHz) 51000 packets of 144 samples from 2018-11-02T17:14:39.269.999. Part 134/147

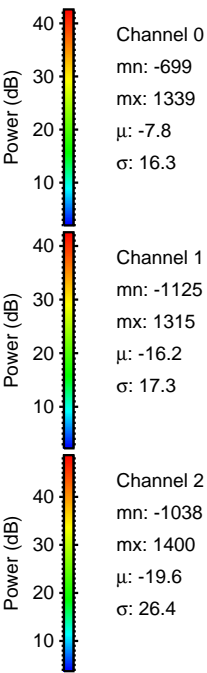
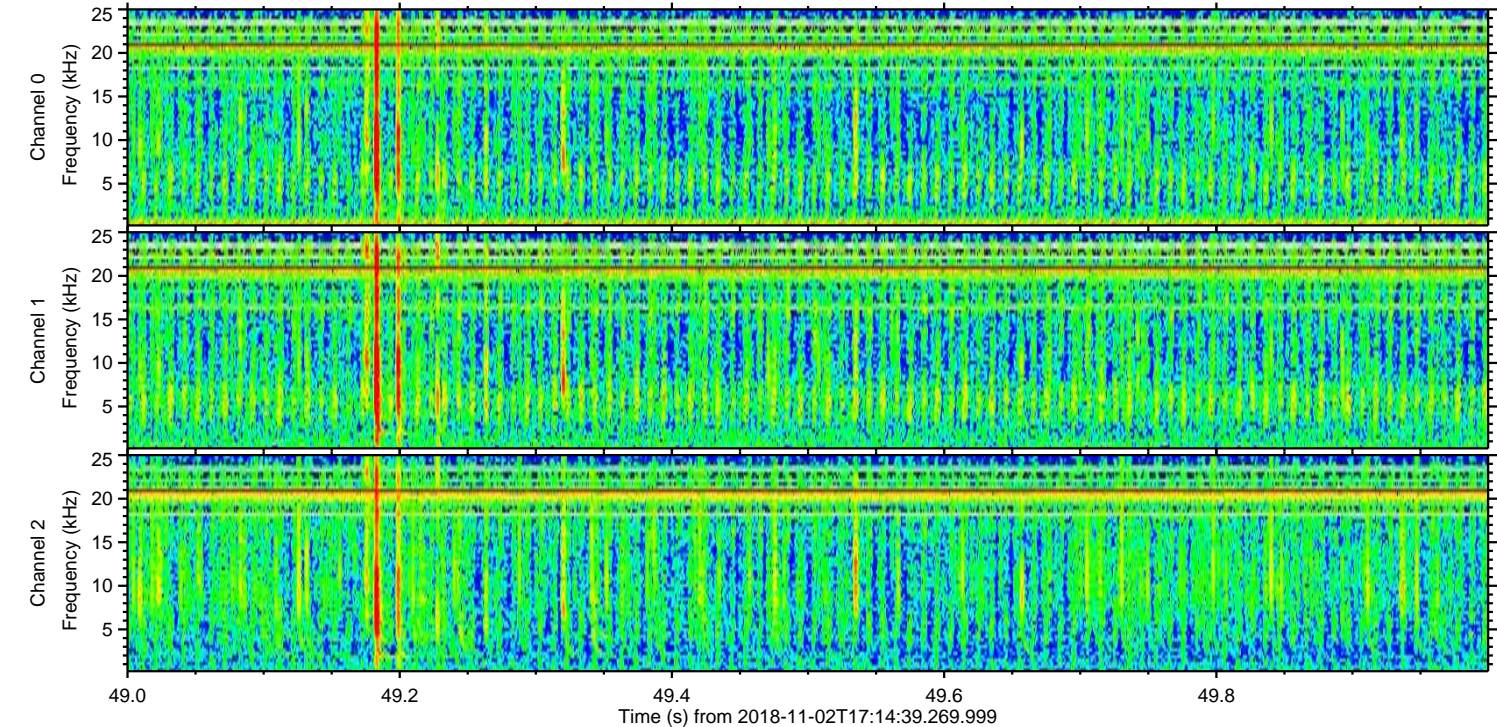
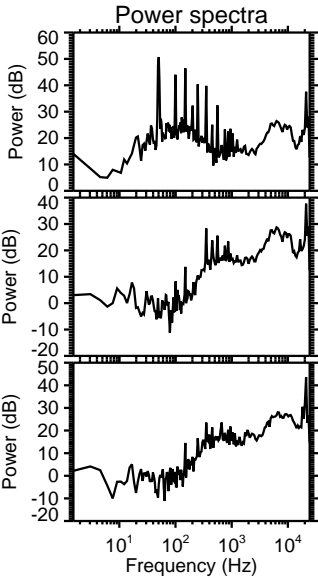
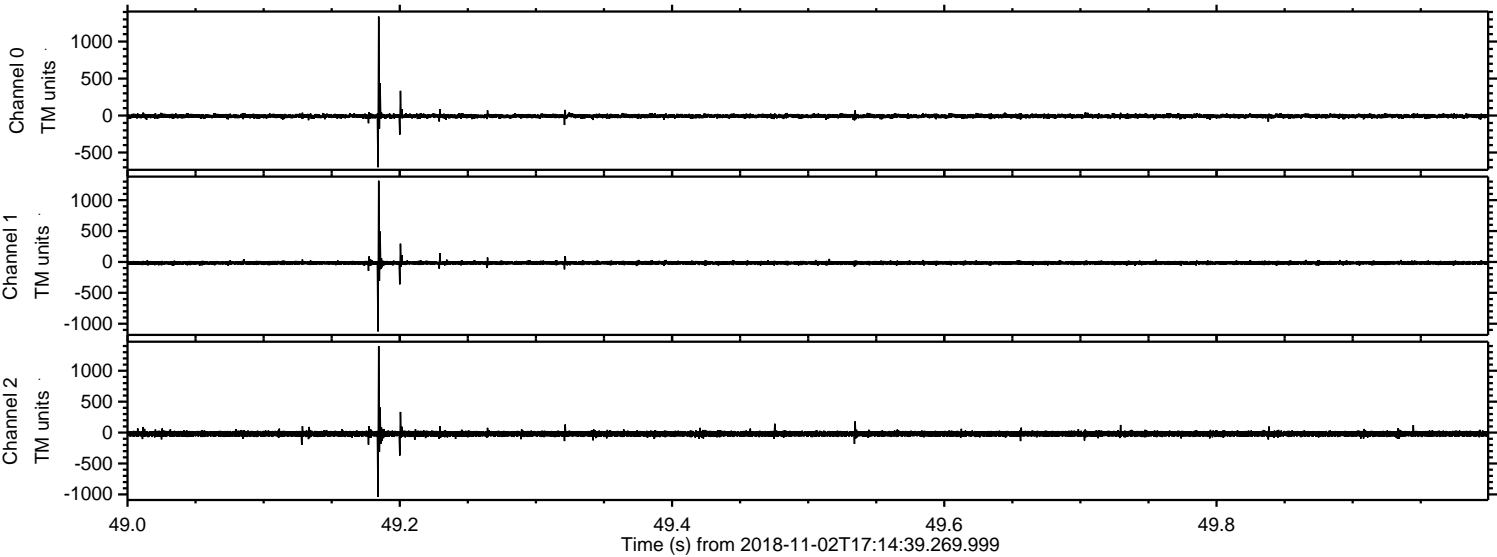
Processed Fri Nov 2 18:23:14 2018 by ELM ver.2012-10-06 from 001__elm20181102_171438__dat00.bin



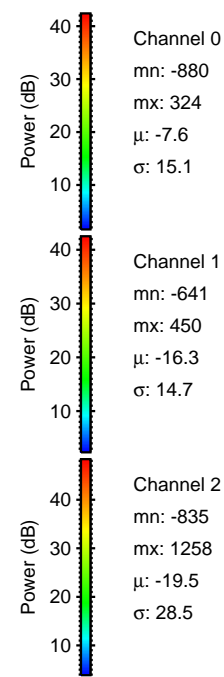
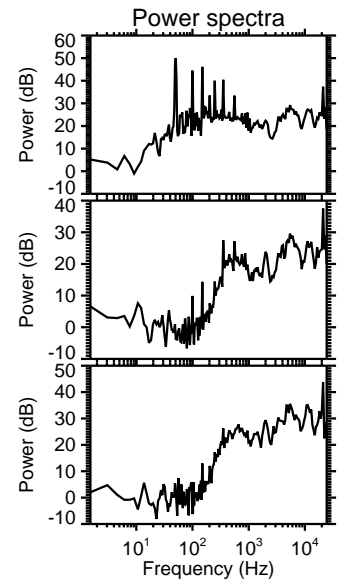
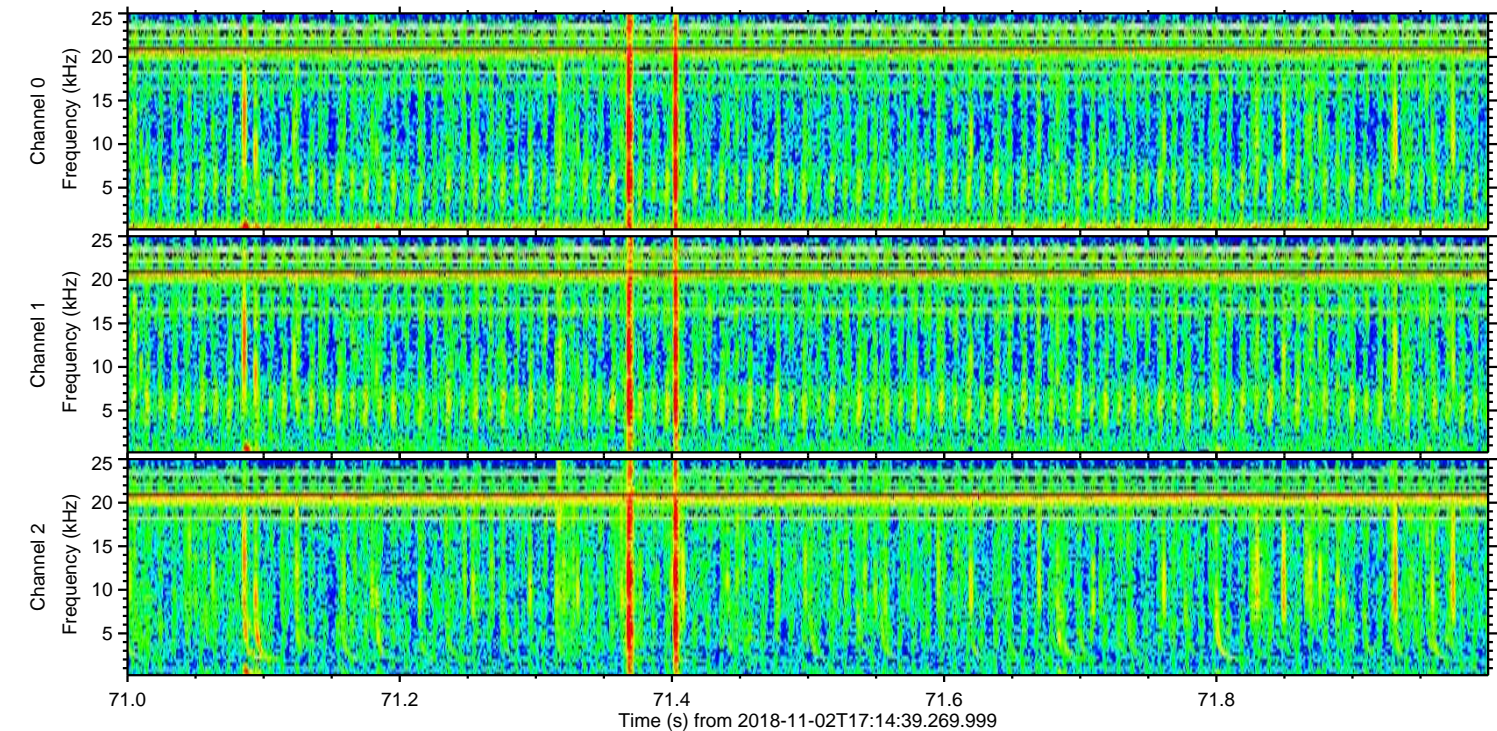
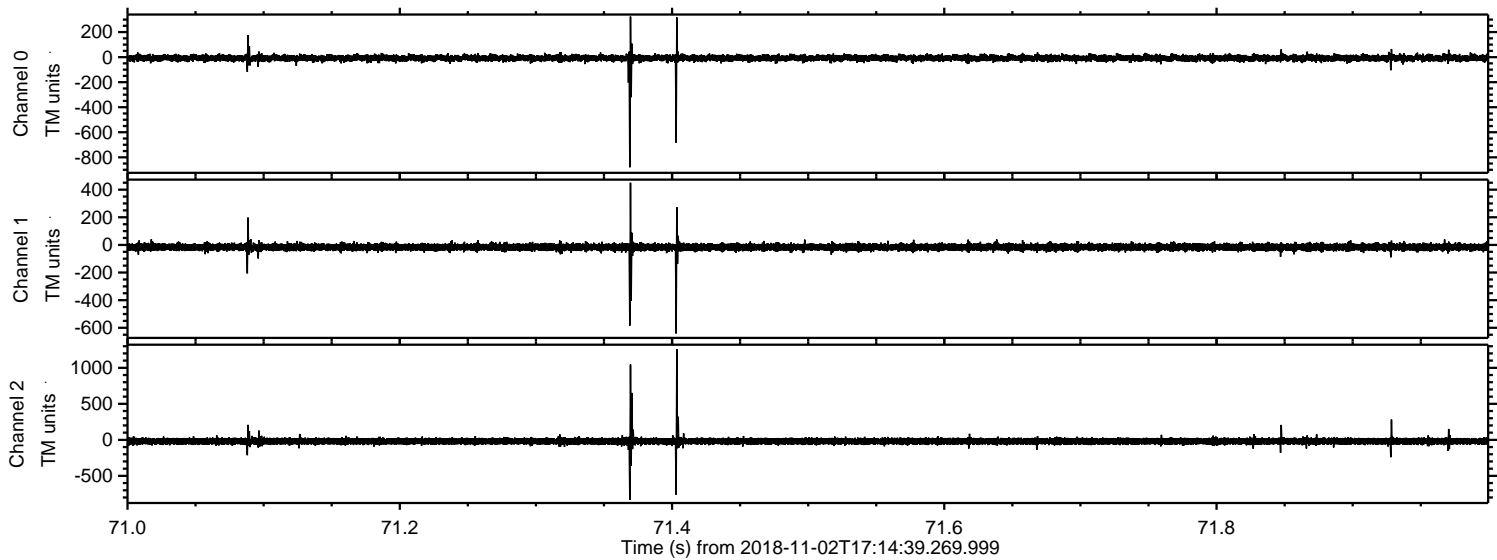
Processed Fri Nov 2 18:23:15 2018 by ELM ver.2012-10-06 from 001__elm20181102_171438__dat00.bin



Processed Fri Nov 2 18:23:15 2018 by ELM ver.2012-10-06 from 001__elm20181102_171438__dat00.bin

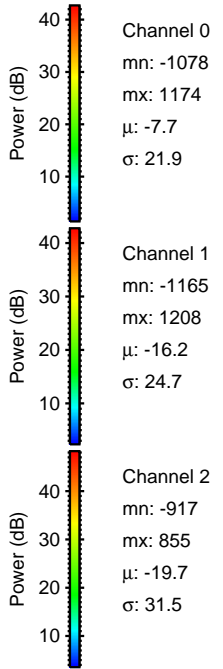
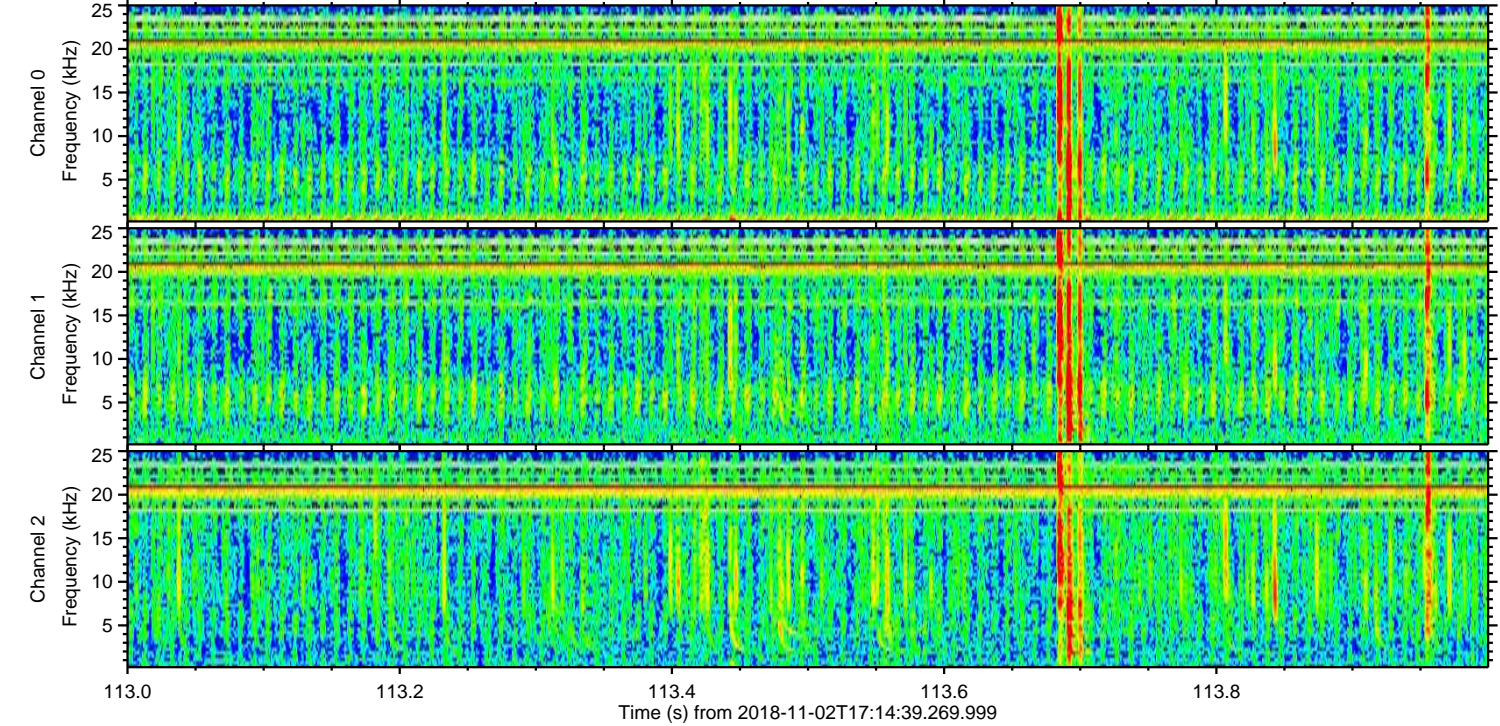
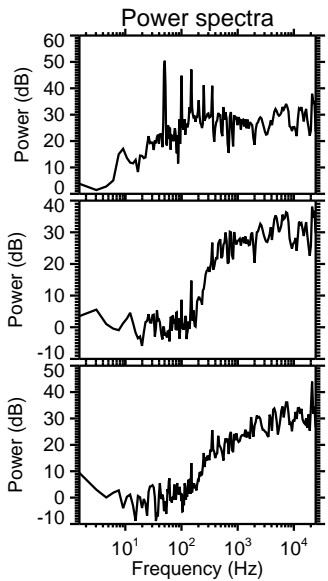
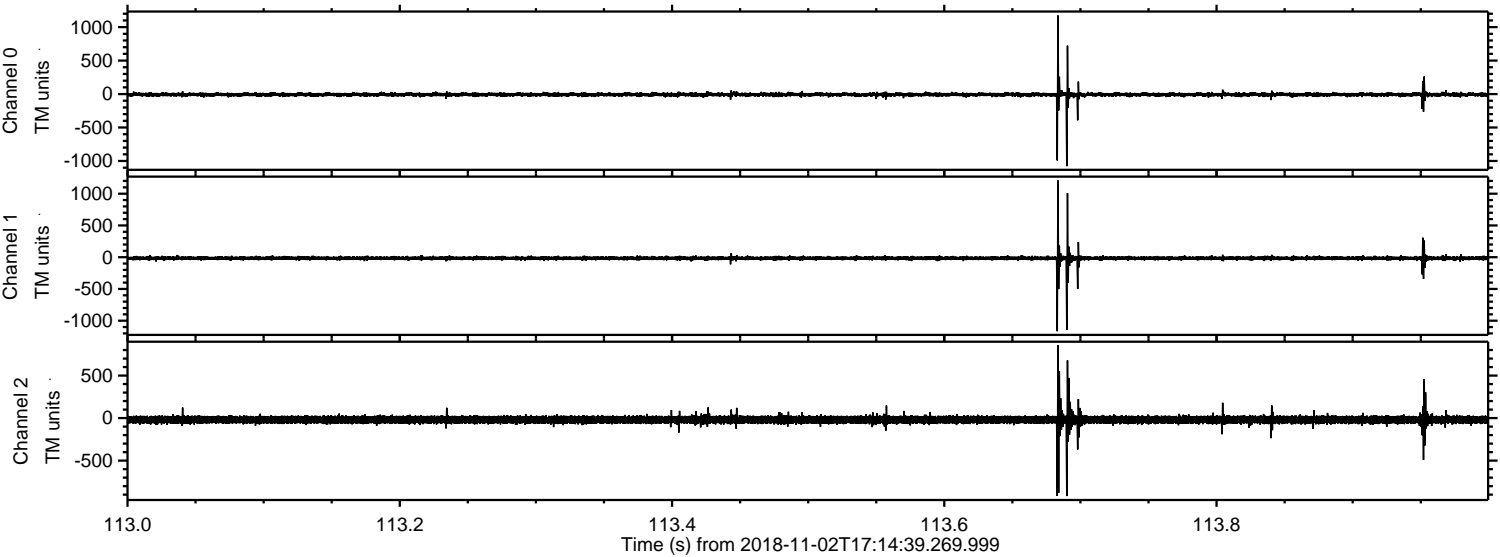


Processed Fri Nov 2 18:23:16 2018 by ELM ver.2012-10-06 from 001__elm20181102_171438__dat00.bin

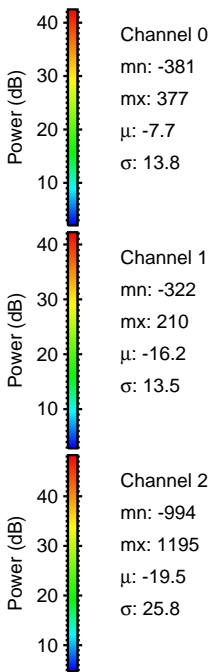
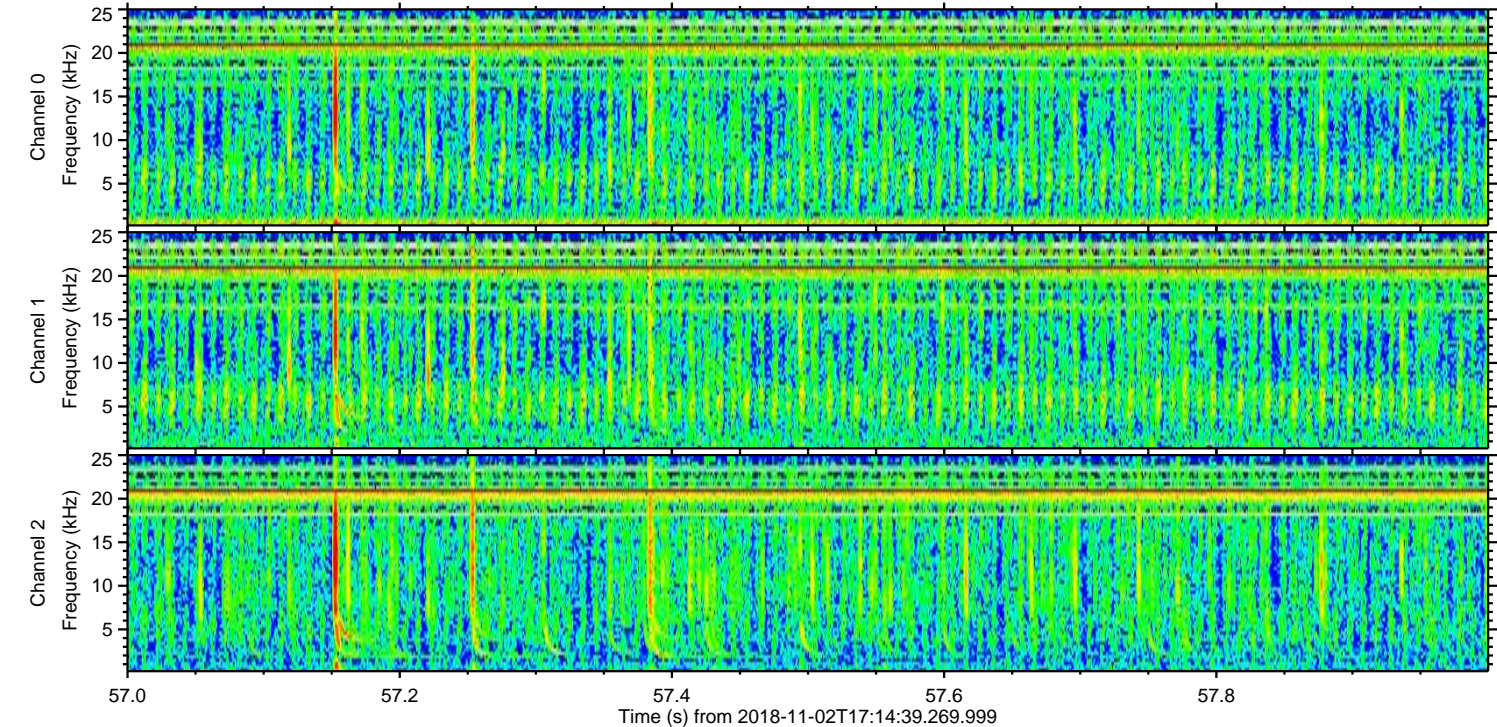
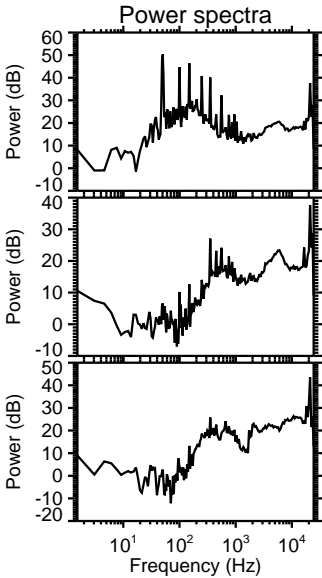
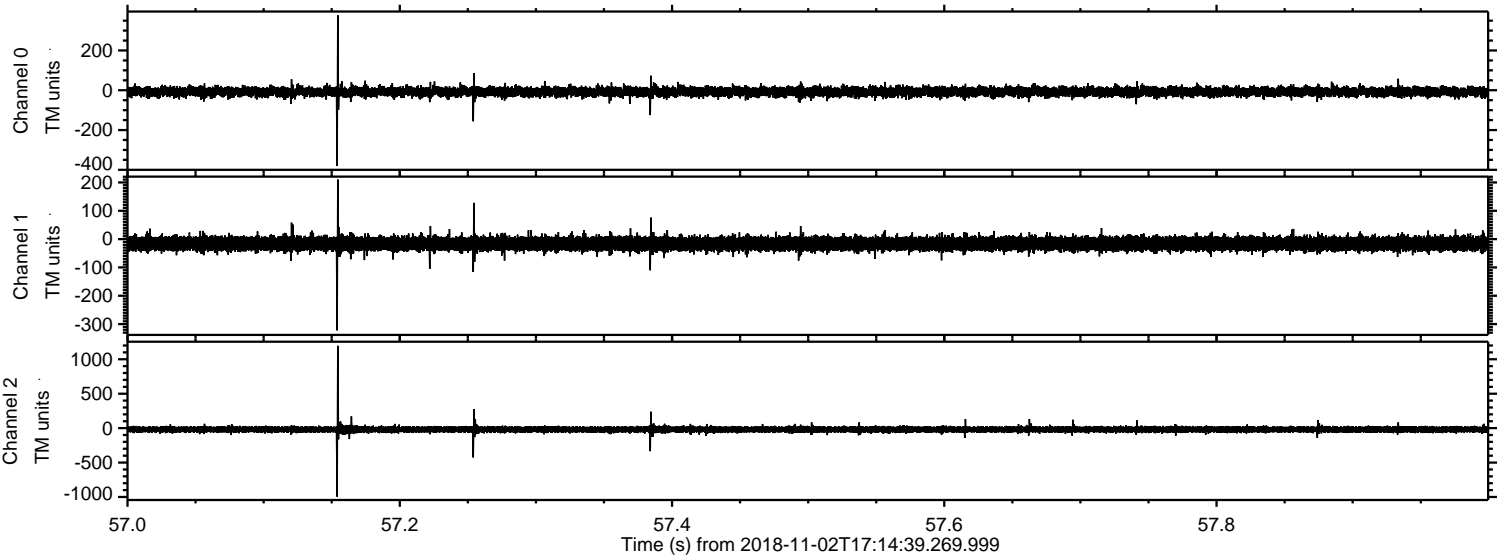


ELMAVAN 3D WAVEFORMS (Measured data sampled at 50 kHz) 51000 packets of 144 samples from 2018-11-02T17:14:39.269.999. Part 114/147

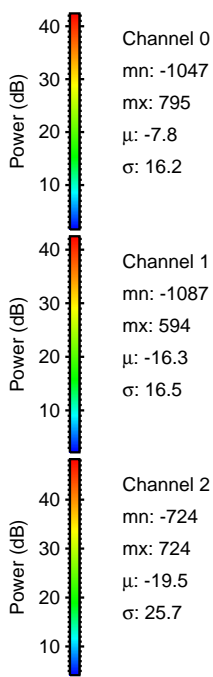
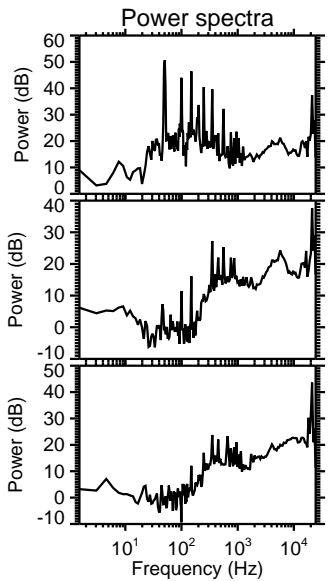
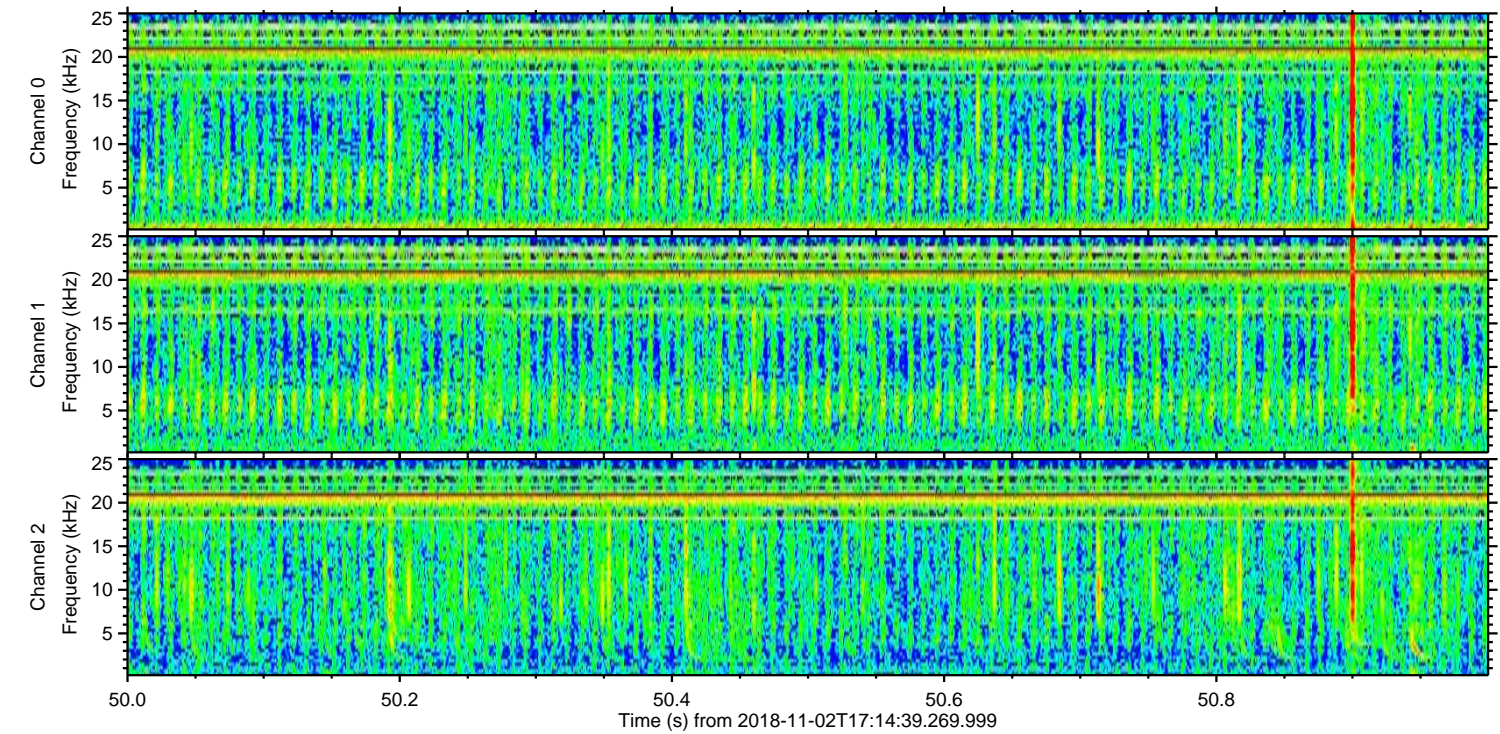
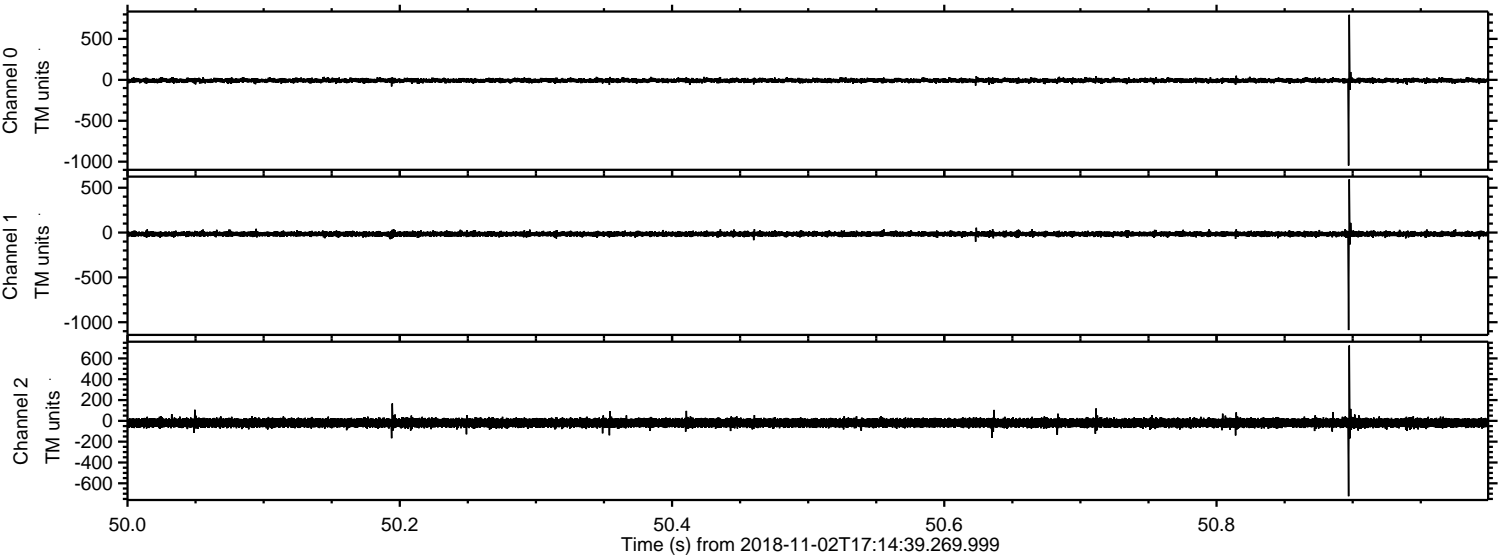
Processed Fri Nov 2 18:23:17 2018 by ELM ver.2012-10-06 from 001__elm20181102_171438__dat00.bin



Processed Fri Nov 2 18:23:18 2018 by ELM ver.2012-10-06 from 001__elm20181102_171438__dat00.bin



Processed Fri Nov 2 18:23:19 2018 by ELM ver.2012-10-06 from 001__elm20181102_171438__dat00.bin



Channel 0
mn: -1047
mx: 795
 μ : -7.8
 σ : 16.2

Channel 1
mn: -1087
mx: 594
 μ : -16.3
 σ : 16.5

Channel 2
mn: -724
mx: 724
 μ : -19.5
 σ : 25.7

