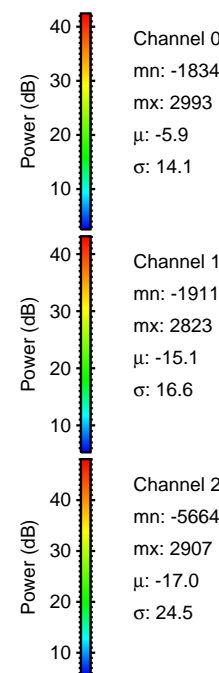
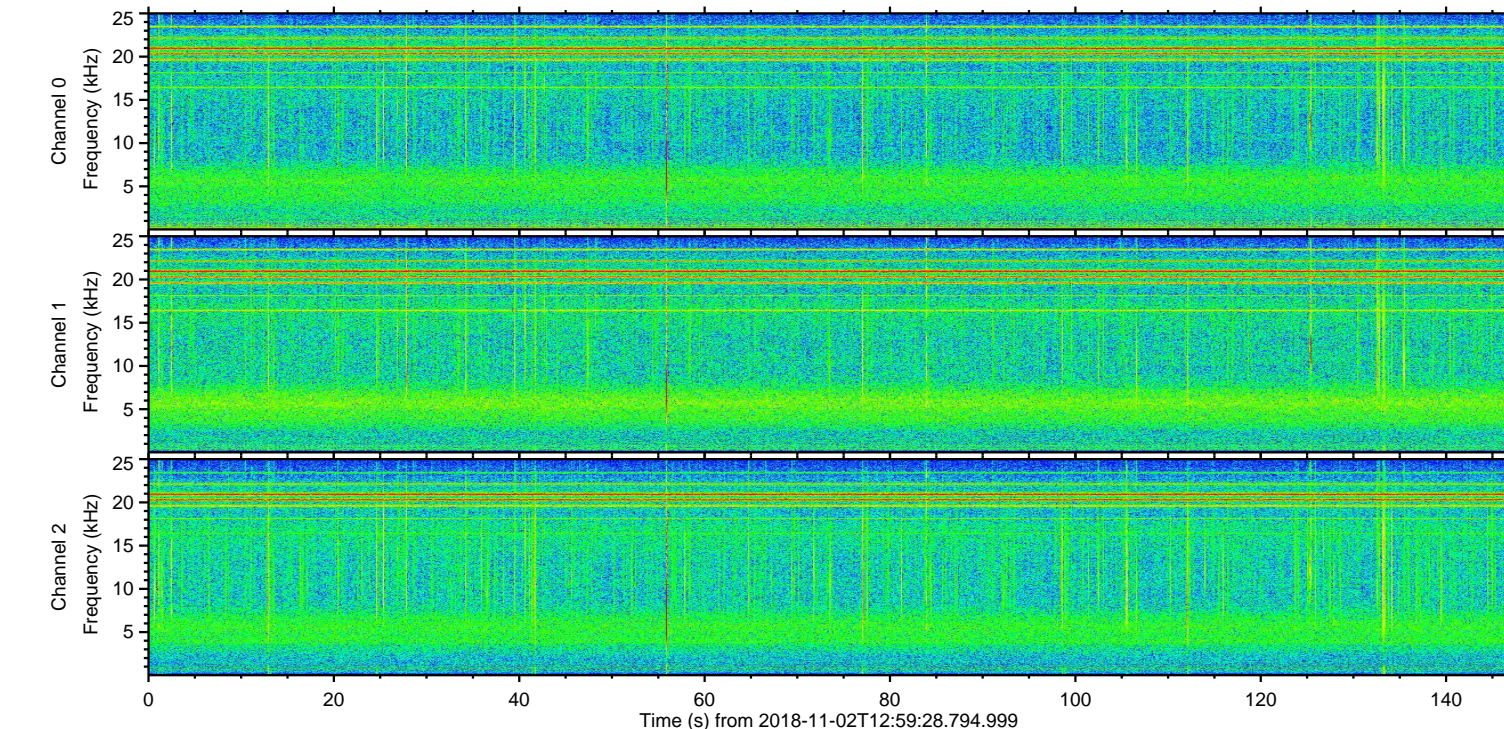
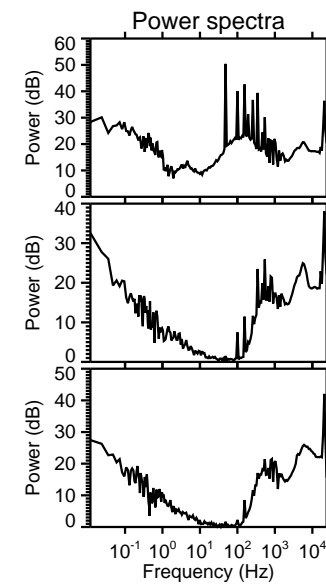
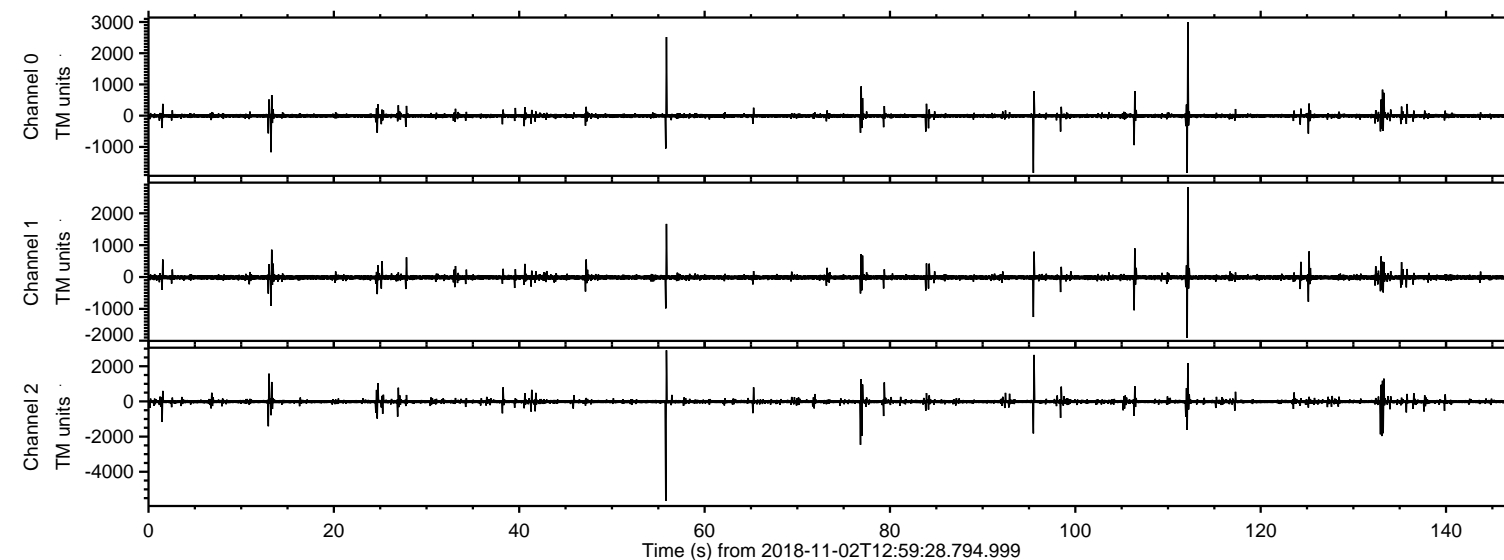
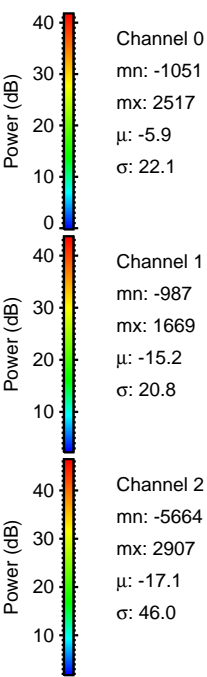
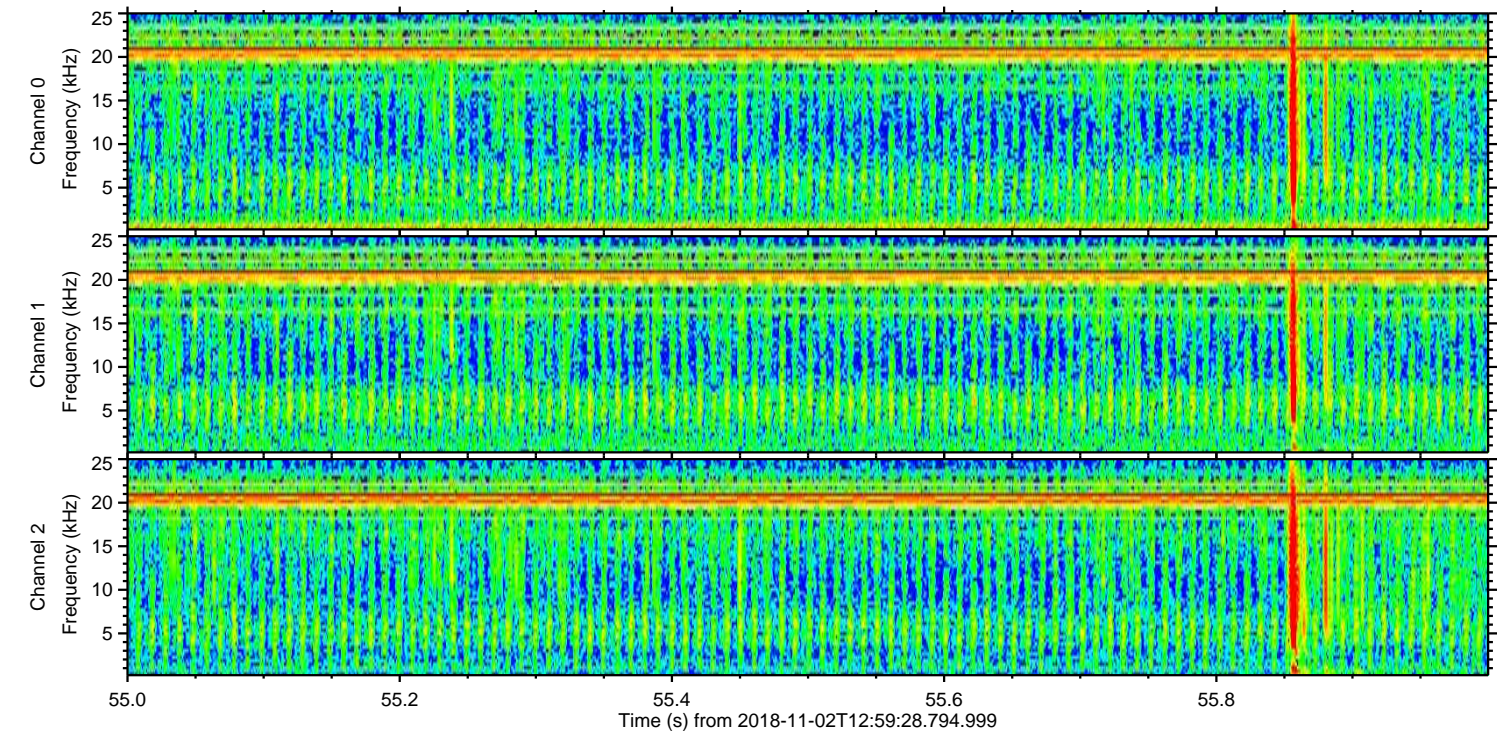
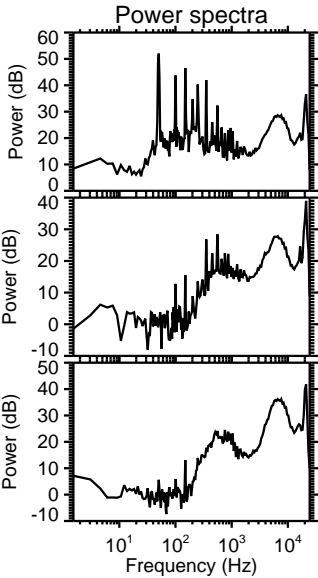
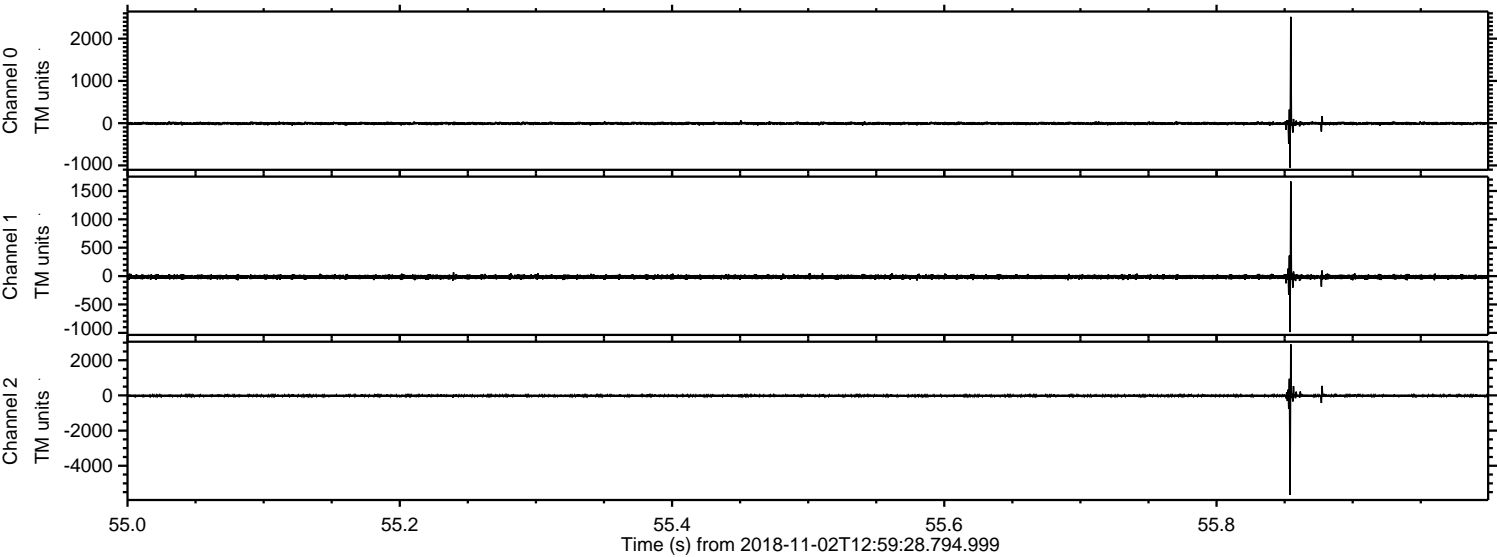


ELMAVAN 3D WAVEFORMS (Measured data sampled at 50 kHz) 51000 packets of 144 samples from 2018-11-02T12:59:28.794.999.

Processed Fri Nov 2 14:07:48 2018 by ELM ver.2012-10-06 from 001__elm20181102_125927__dat00.bin

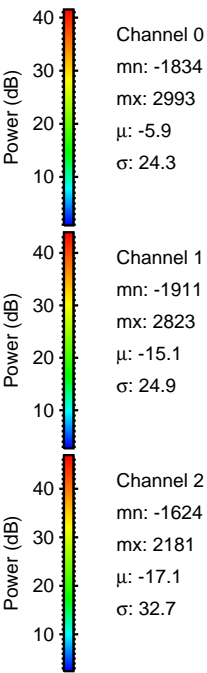
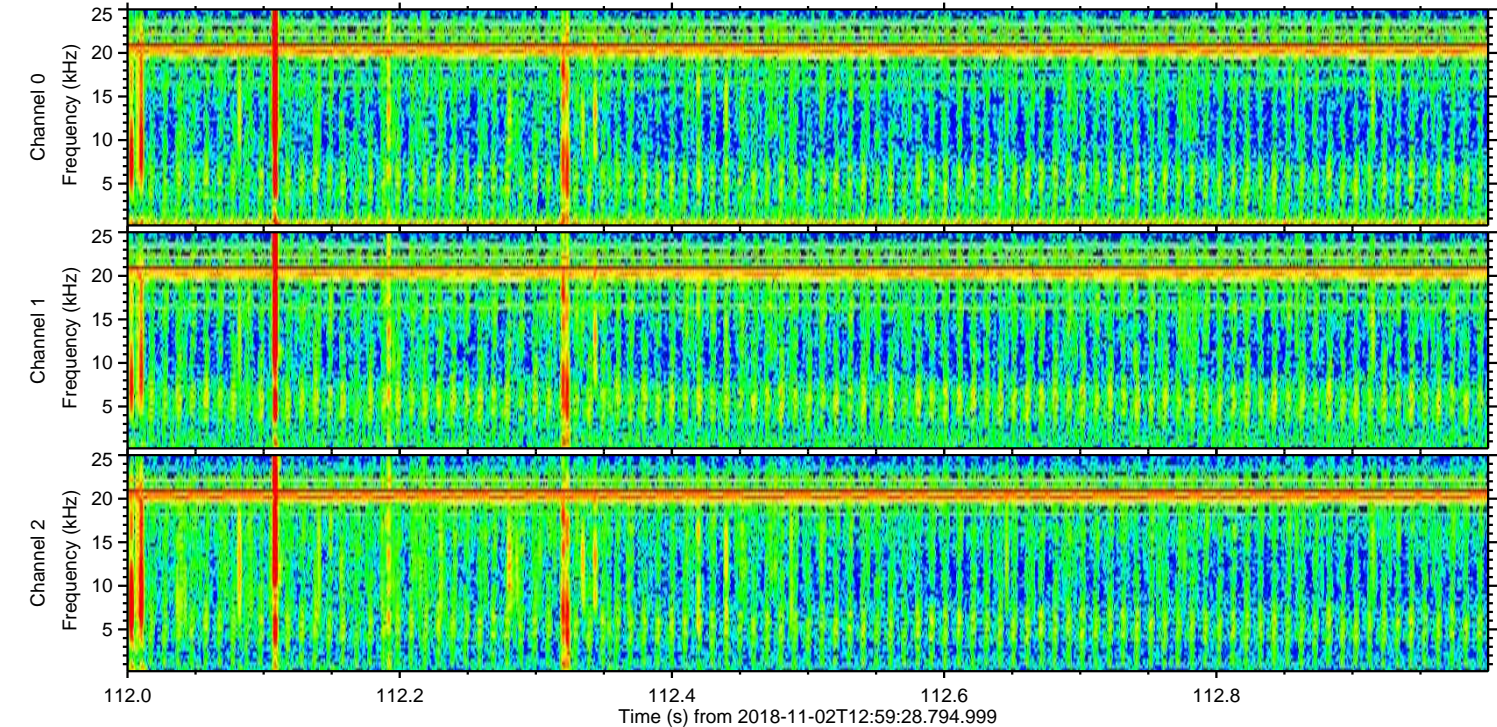
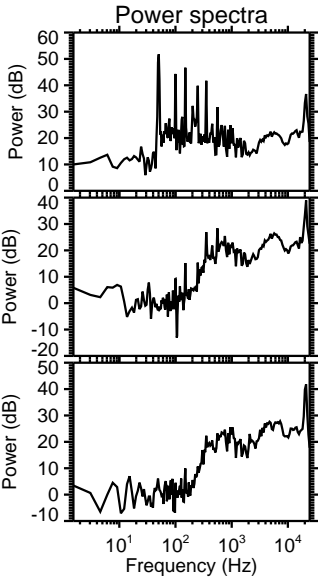
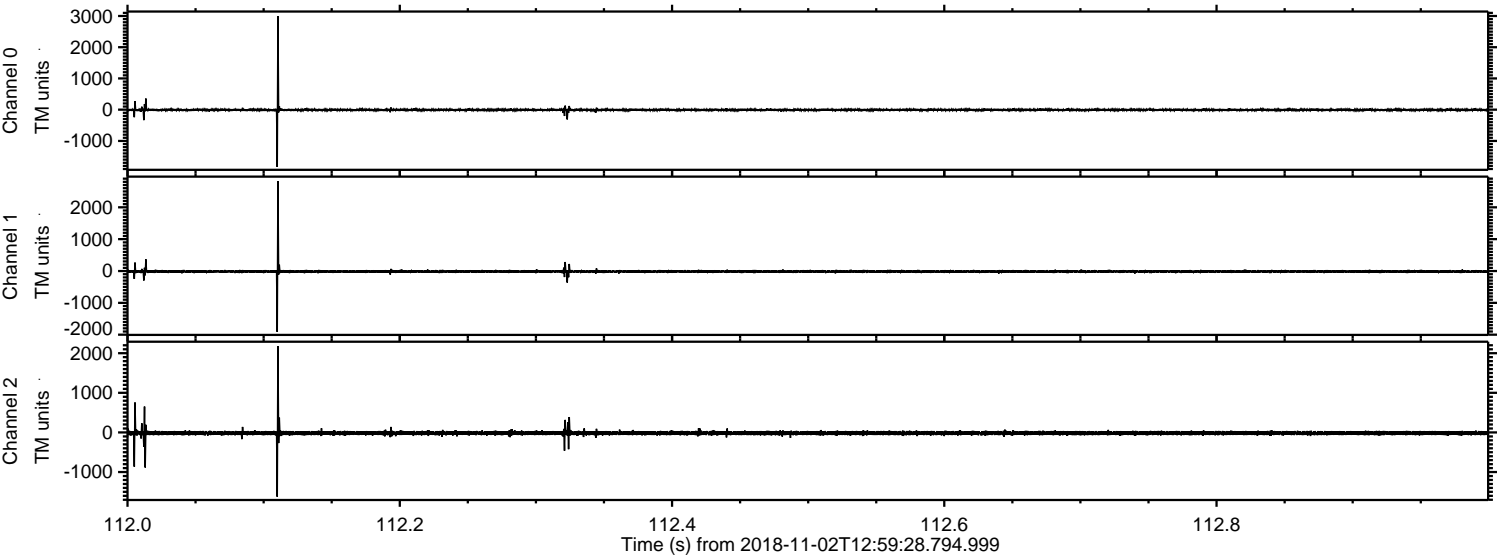


Processed Fri Nov 2 14:07:57 2018 by ELM ver.2012-10-06 from 001__elm20181102_125927__dat00.bin

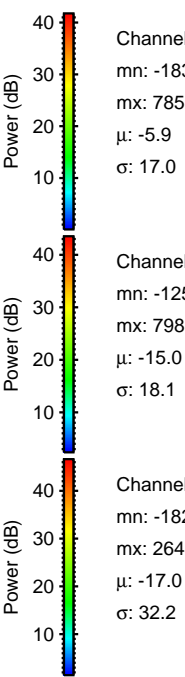
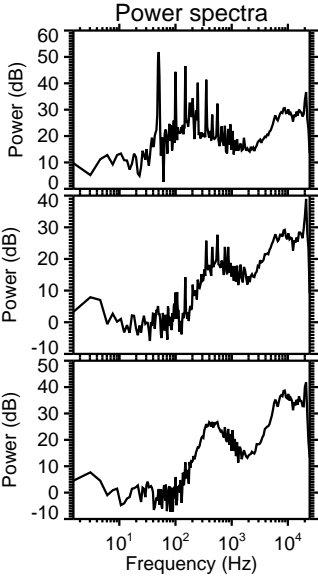
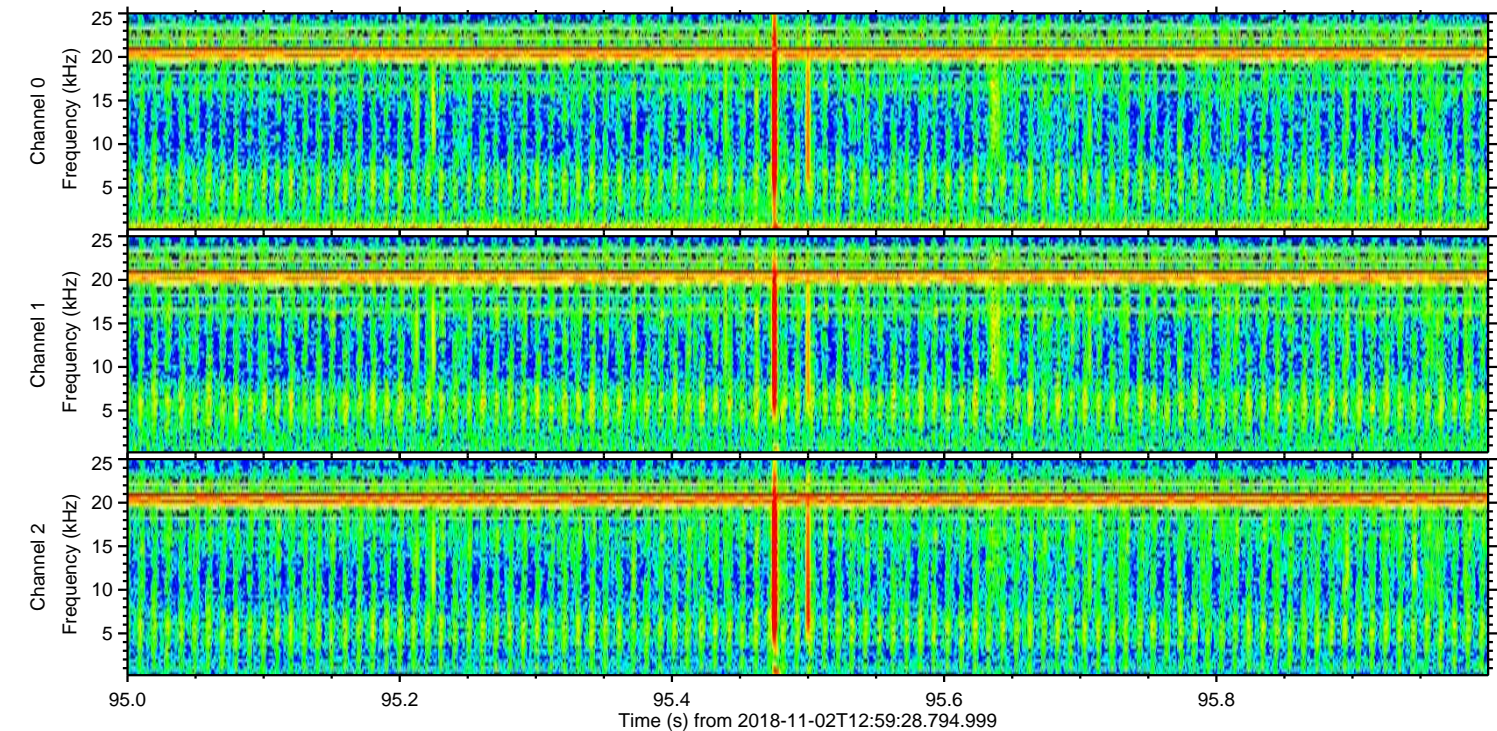
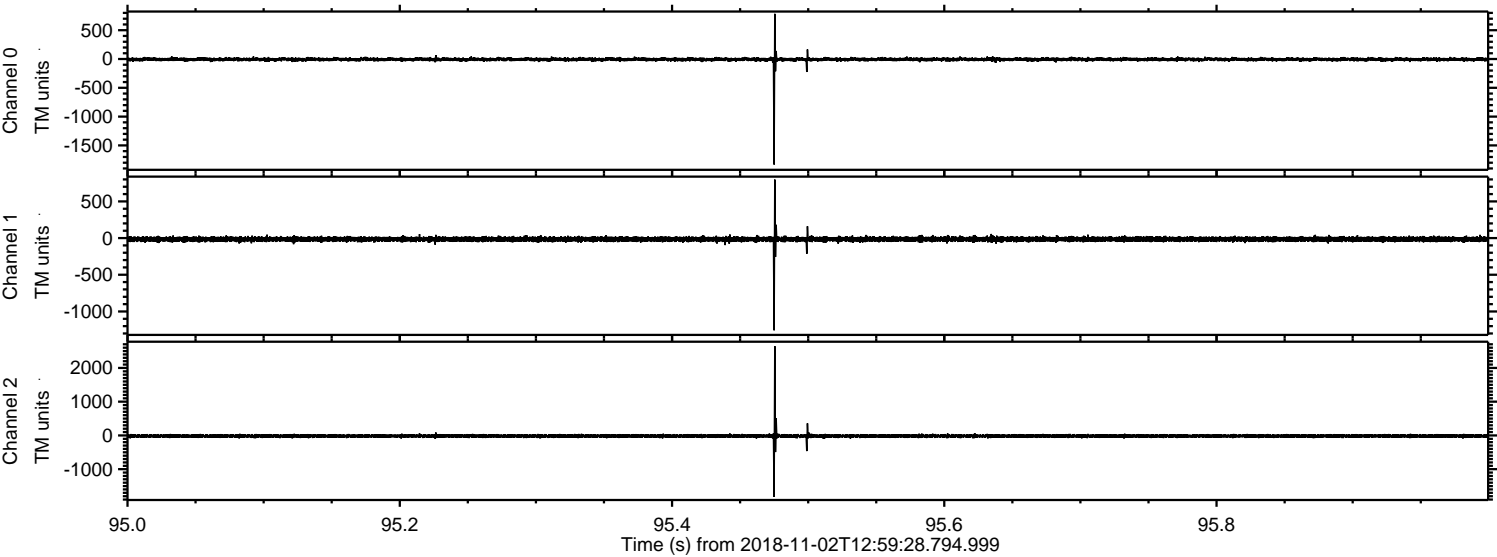


ELMAVAN 3D WAVEFORMS (Measured data sampled at 50 kHz) 51000 packets of 144 samples from 2018-11-02T12:59:28.794.999. Part 113/147

Processed Fri Nov 2 14:07:58 2018 by ELM ver.2012-10-06 from 001__elm20181102_125927__dat00.bin



Processed Fri Nov 2 14:07:59 2018 by ELM ver.2012-10-06 from 001__elm20181102_125927__dat00.bin

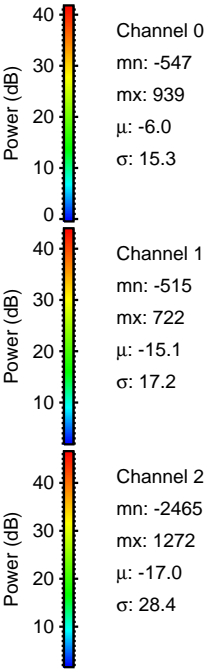
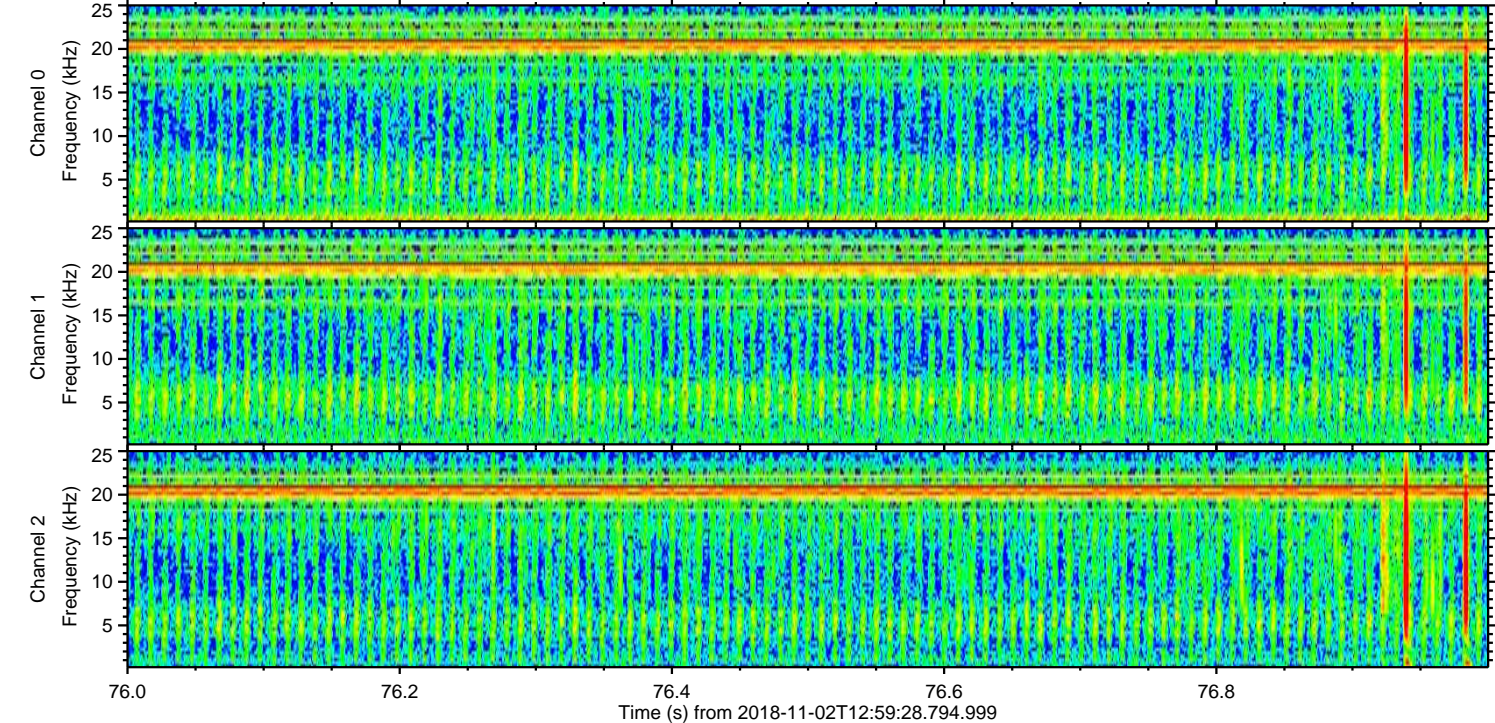
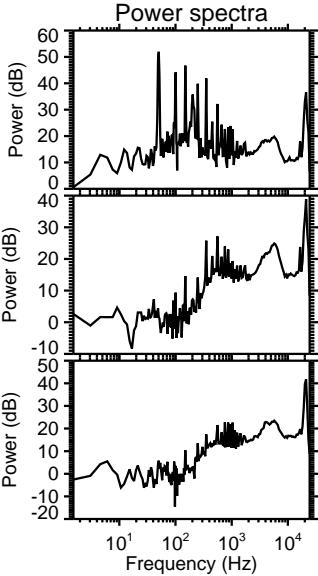
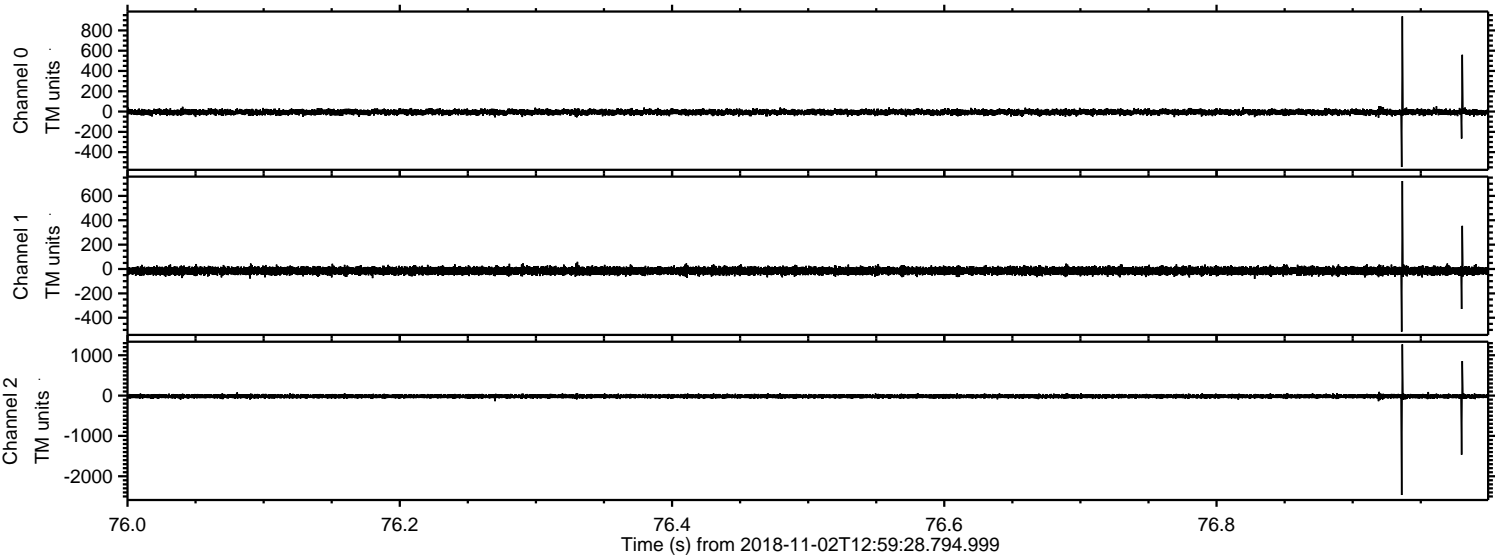


Channel 0
mn: -1832
mx: 785
 μ : -5.9
 σ : 17.0

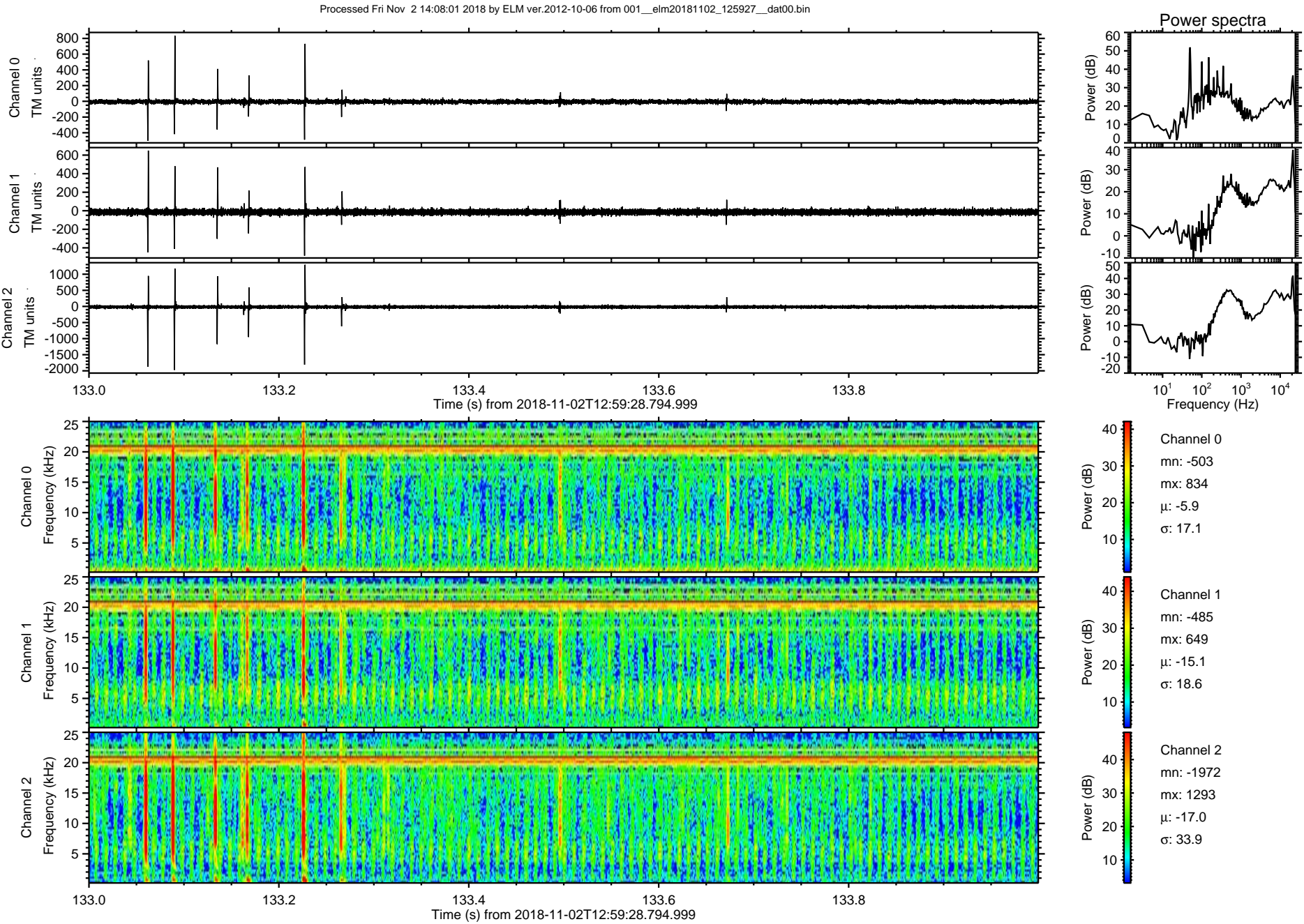
Channel 1
mn: -1257
mx: 798
 μ : -15.0
 σ : 18.1

Channel 2
mn: -1822
mx: 2645
 μ : -17.0
 σ : 32.2

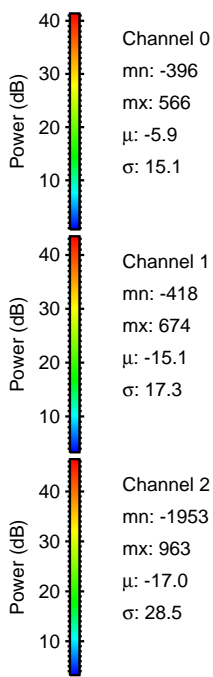
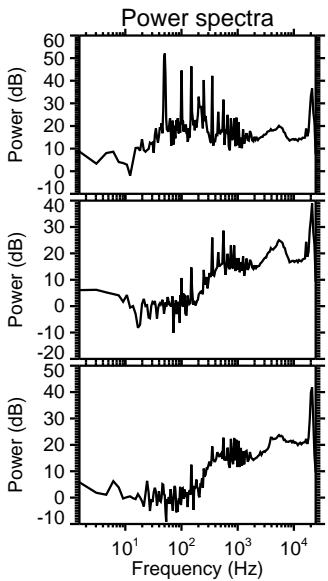
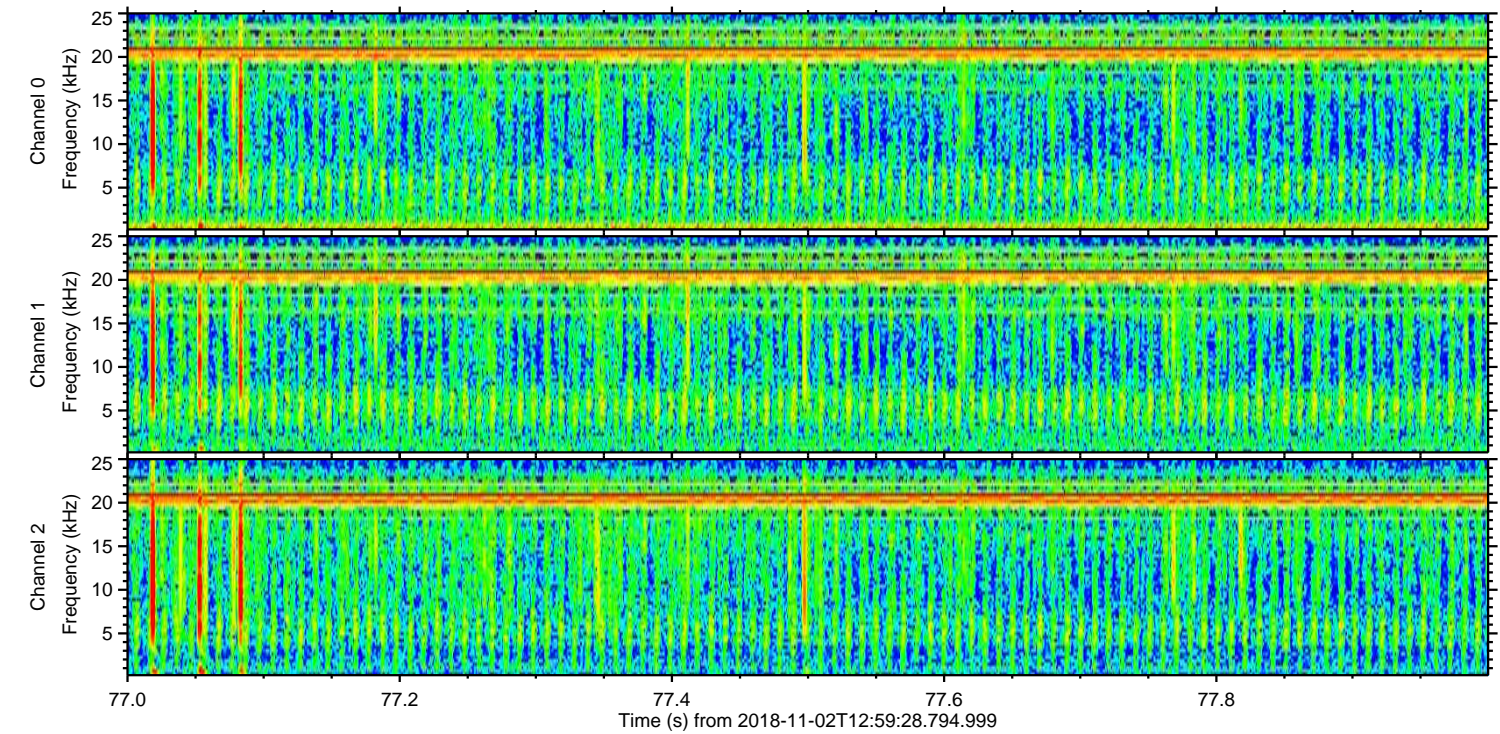
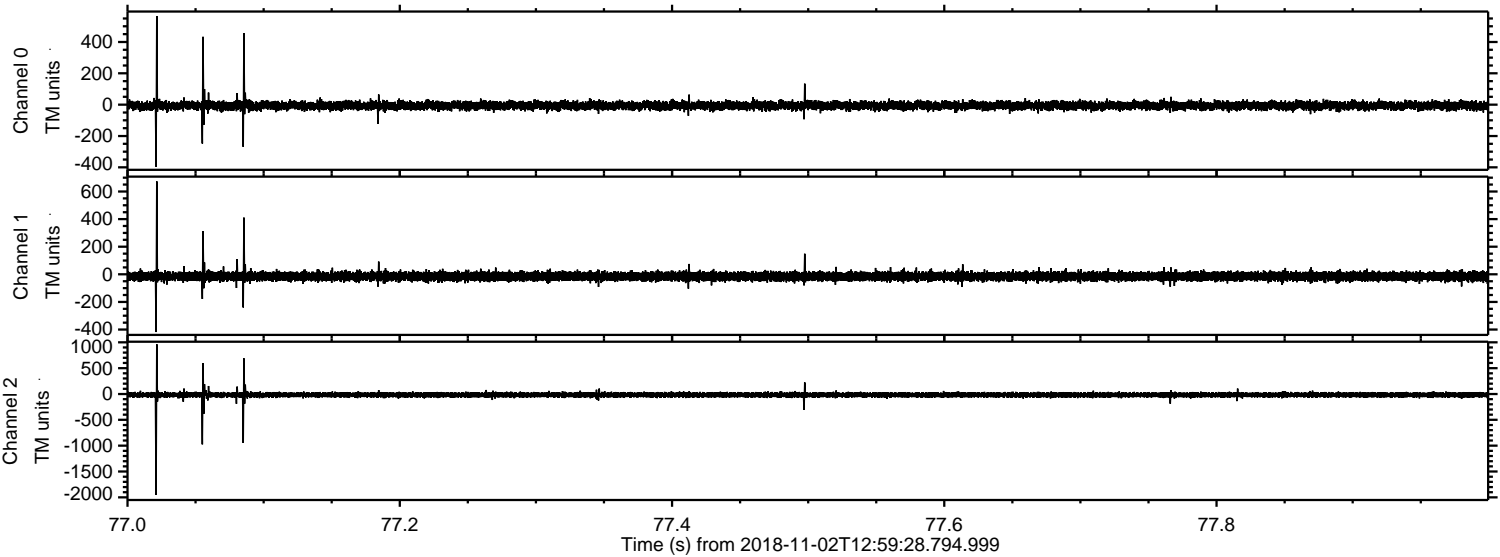
Processed Fri Nov 2 14:08:00 2018 by ELM ver.2012-10-06 from 001__elm20181102_125927__dat00.bin



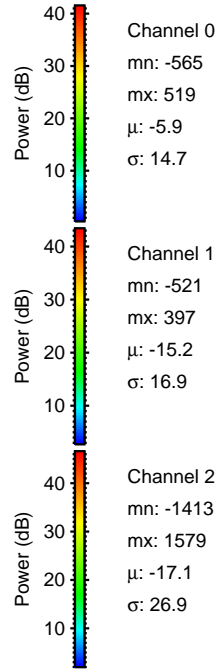
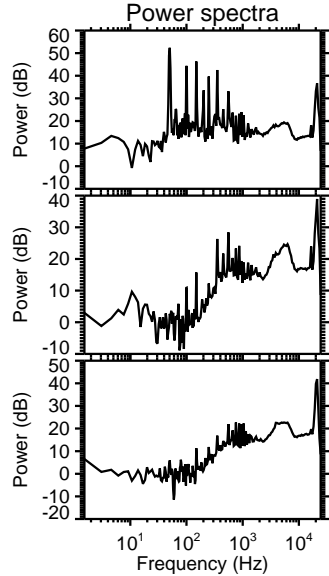
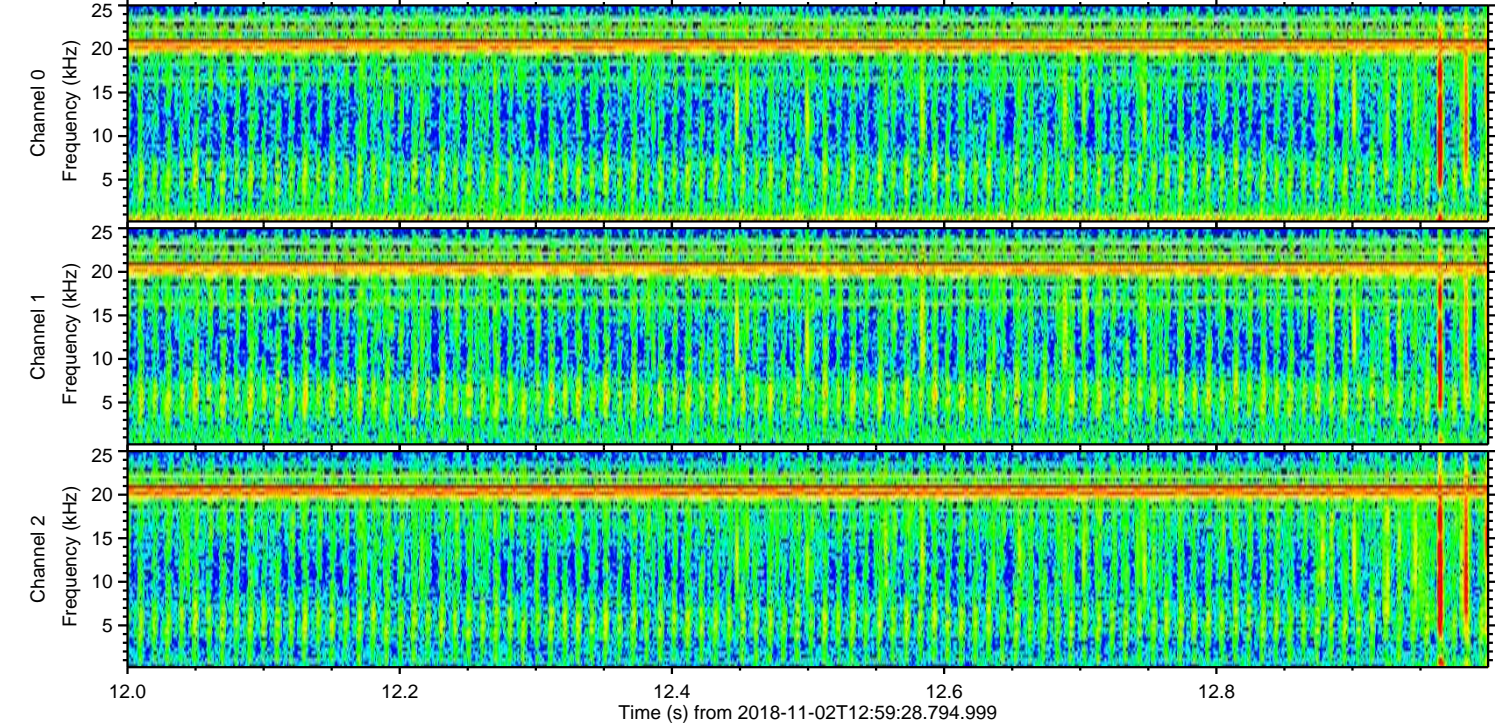
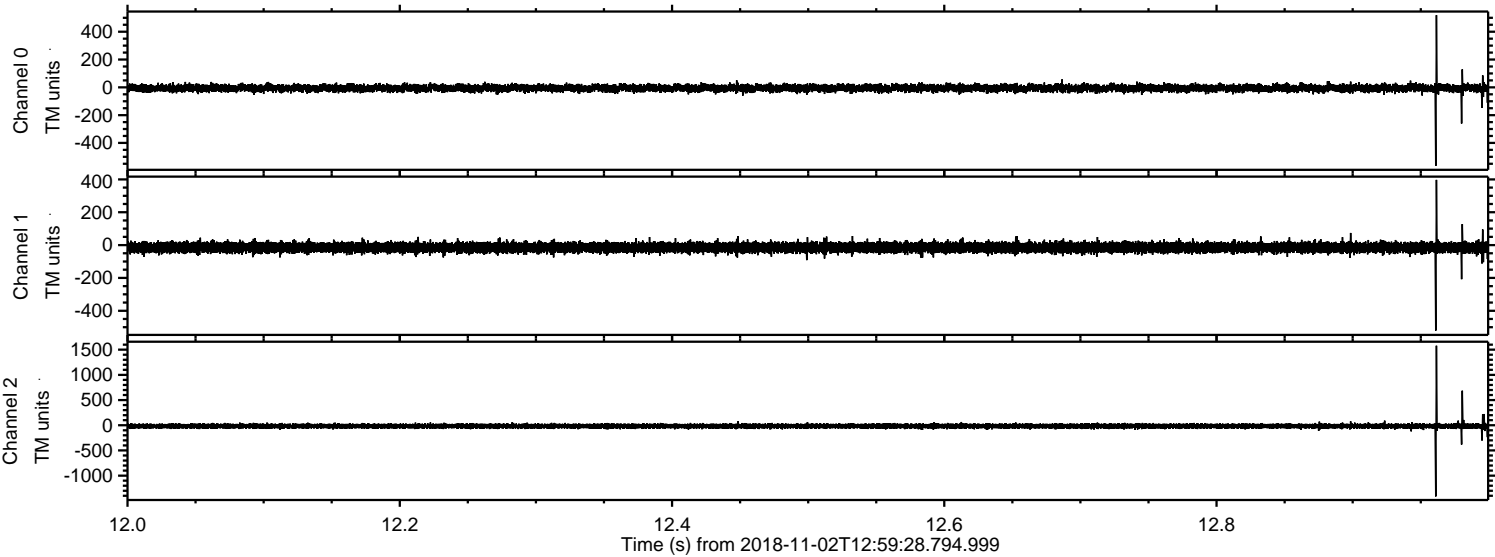
ELMAVAN 3D WAVEFORMS (Measured data sampled at 50 kHz) 51000 packets of 144 samples from 2018-11-02T12:59:28.794.999. Part 134/147



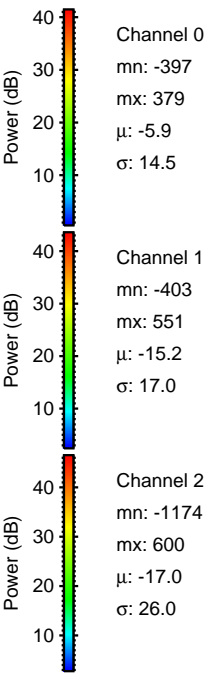
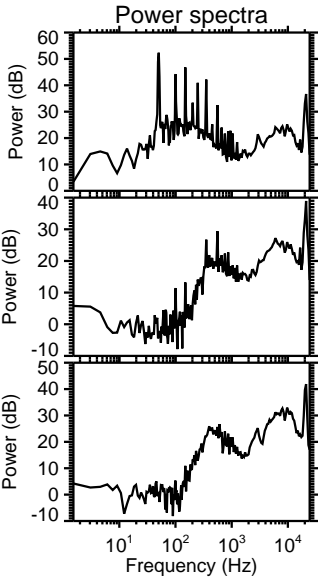
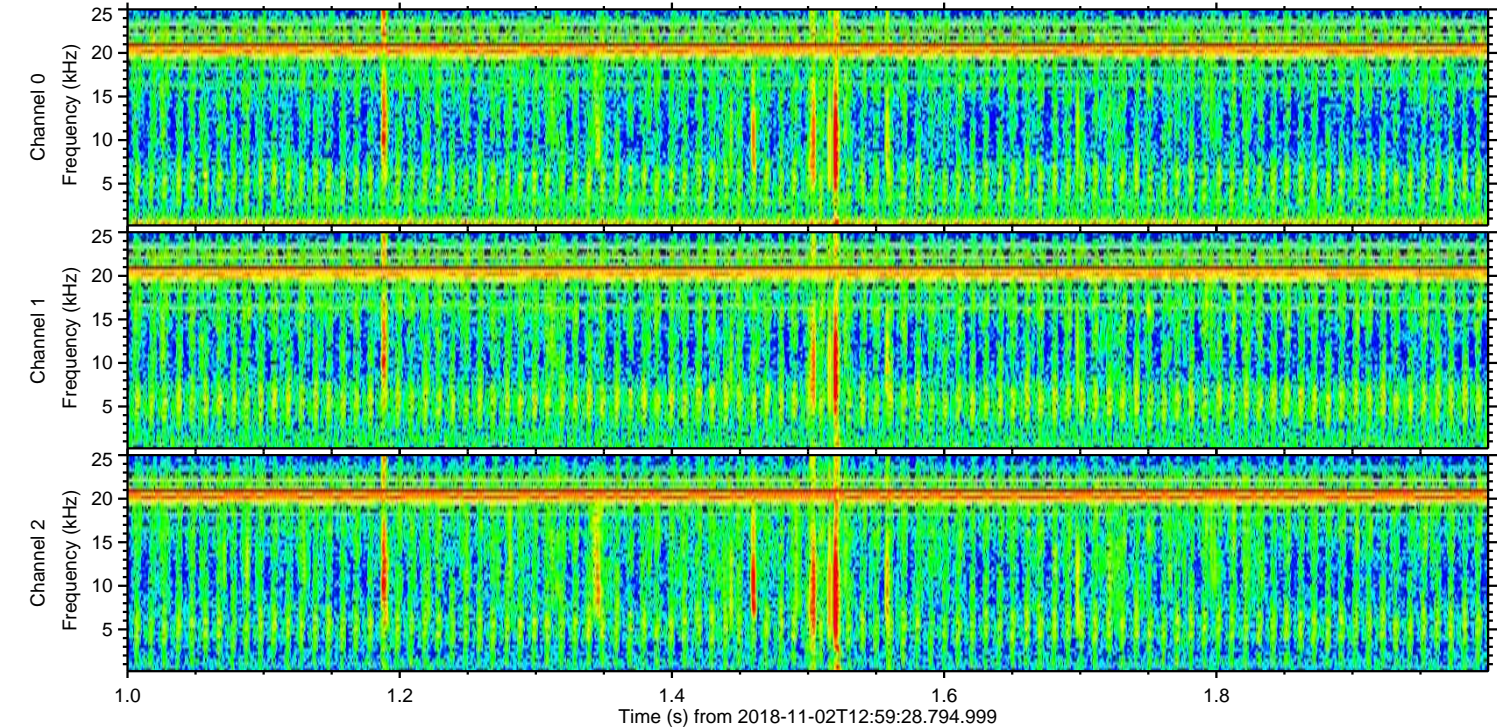
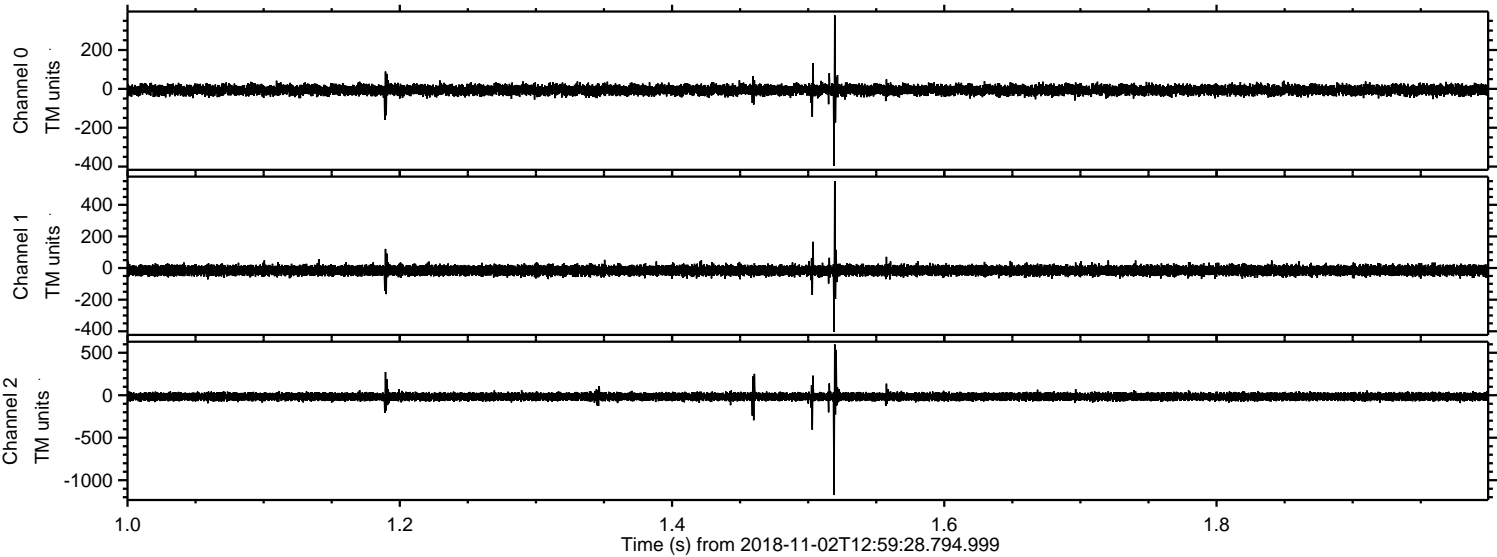
Processed Fri Nov 2 14:08:02 2018 by ELM ver.2012-10-06 from 001__elm20181102_125927__dat00.bin



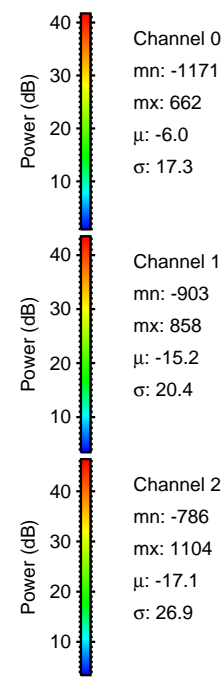
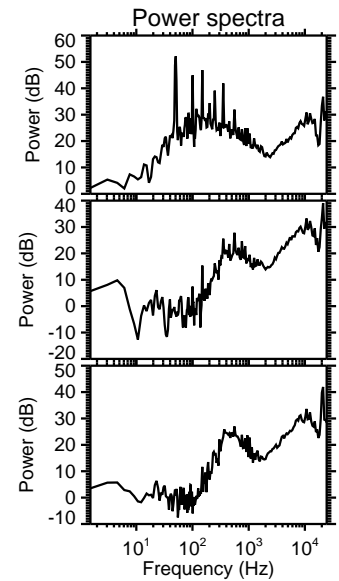
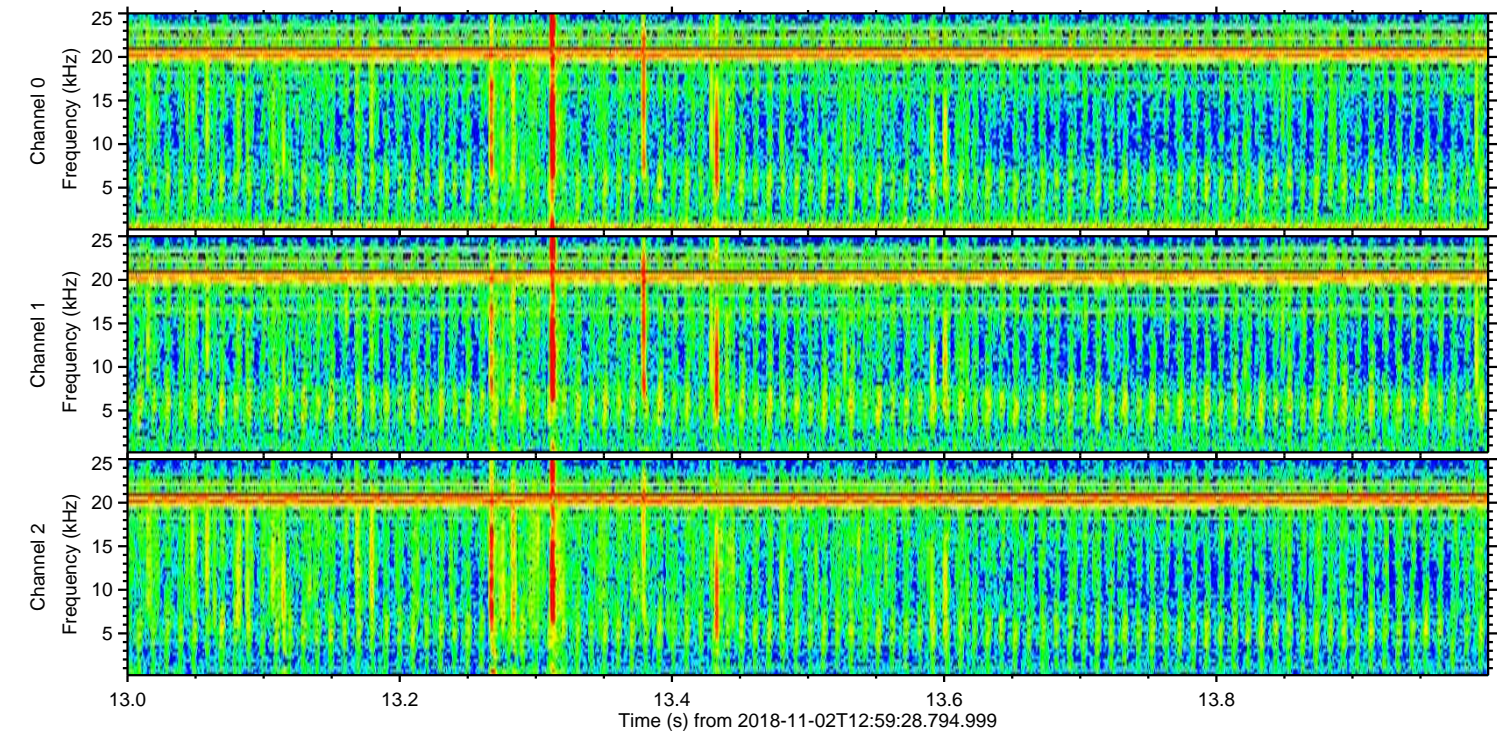
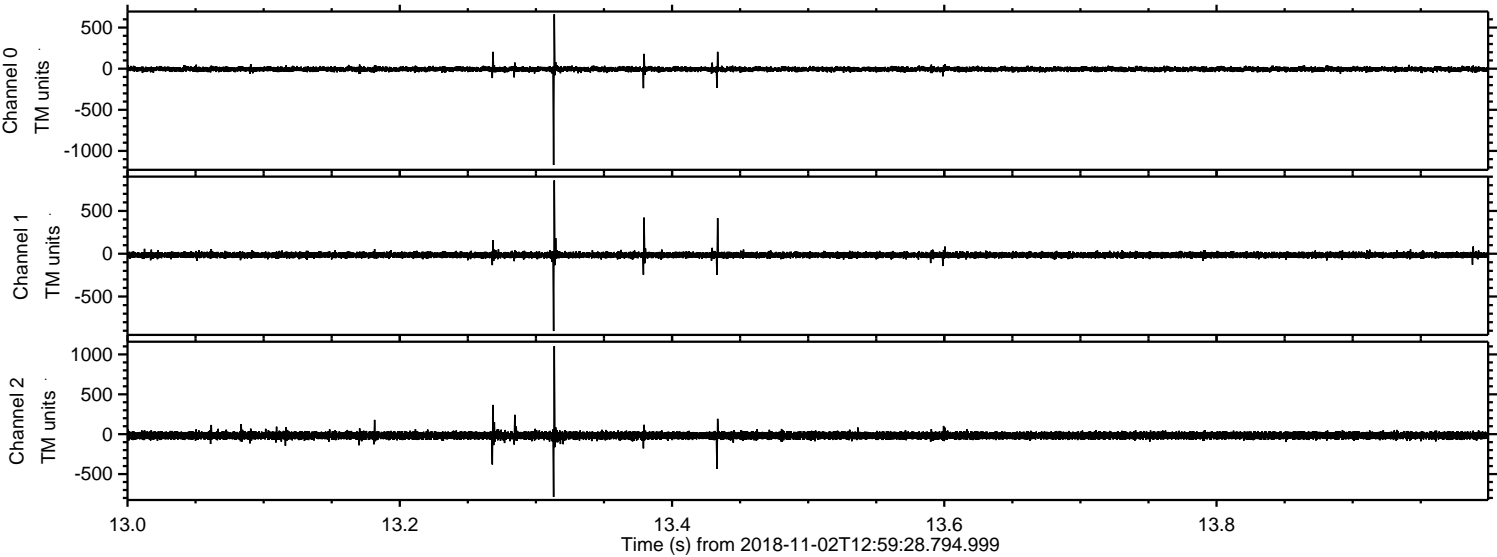
Processed Fri Nov 2 14:08:02 2018 by ELM ver.2012-10-06 from 001__elm20181102_125927__dat00.bin



Processed Fri Nov 2 14:08:03 2018 by ELM ver.2012-10-06 from 001__elm20181102_125927__dat00.bin



Processed Fri Nov 2 14:08:04 2018 by ELM ver.2012-10-06 from 001__elm20181102_125927__dat00.bin



Channel 0
mn: -1171
mx: 662
 μ : -6.0
 σ : 17.3

Channel 1
mn: -903
mx: 858
 μ : -15.2
 σ : 20.4

Channel 2
mn: -786
mx: 1104
 μ : -17.1
 σ : 26.9

