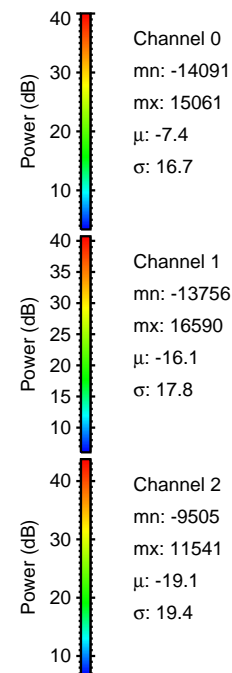
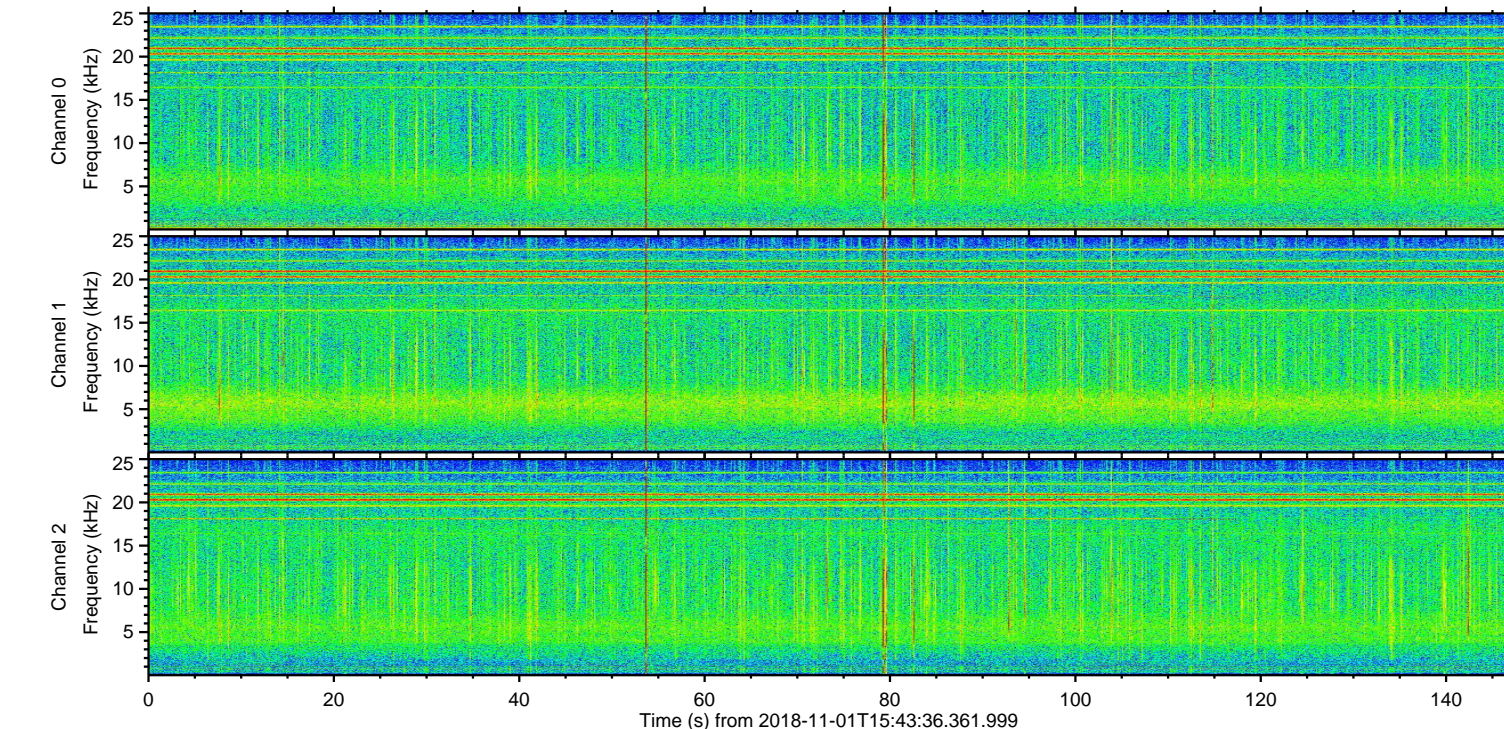
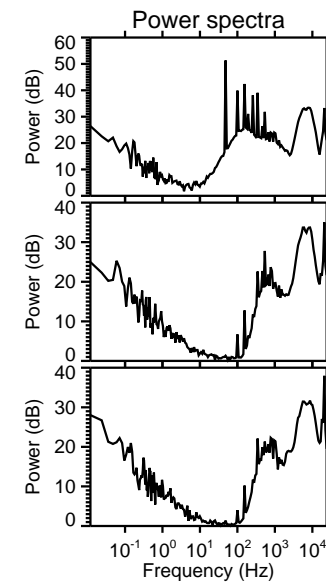
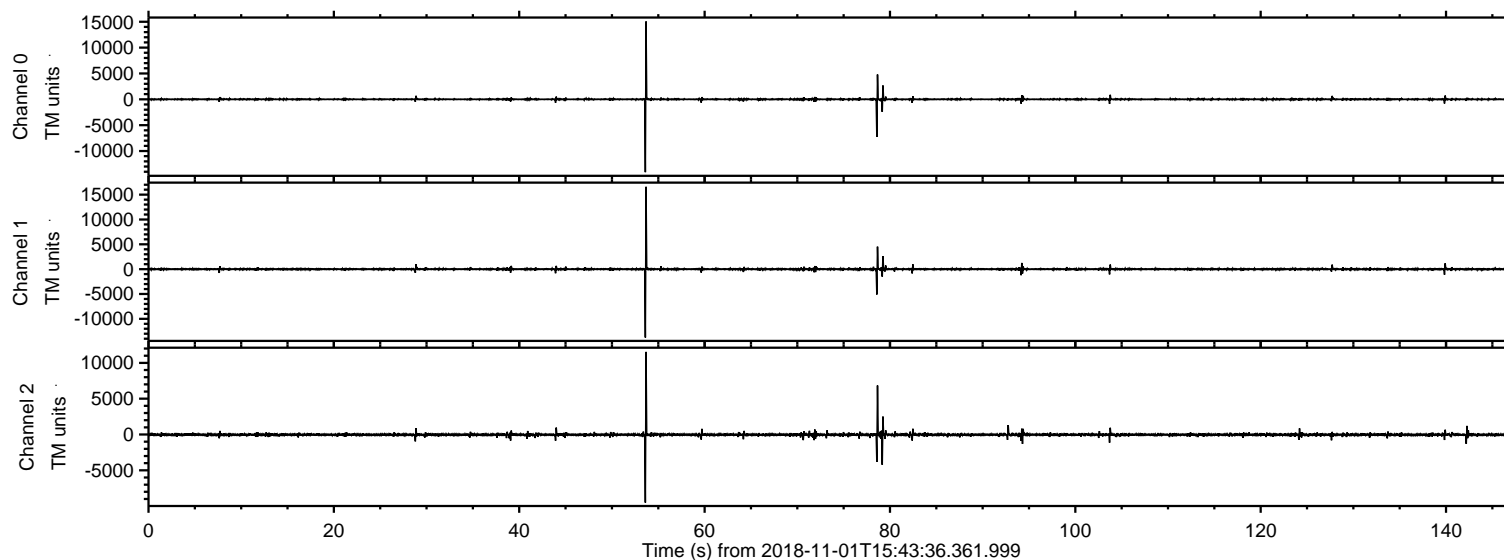
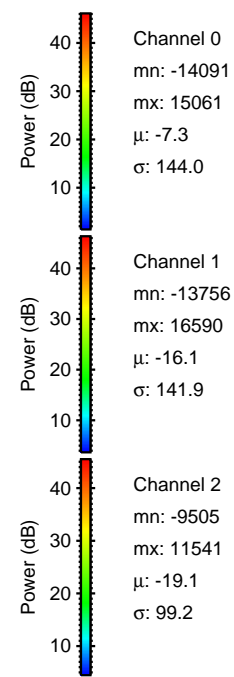
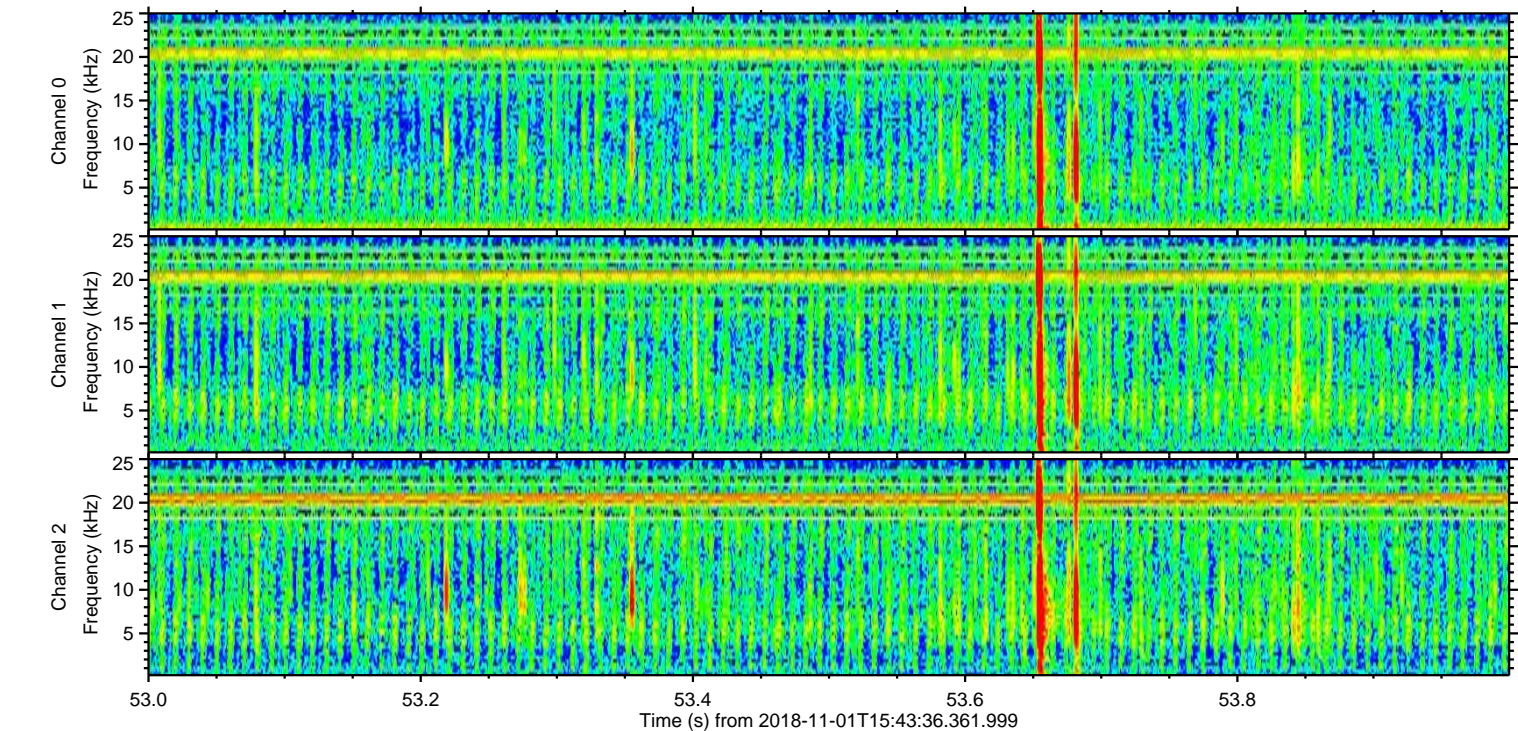
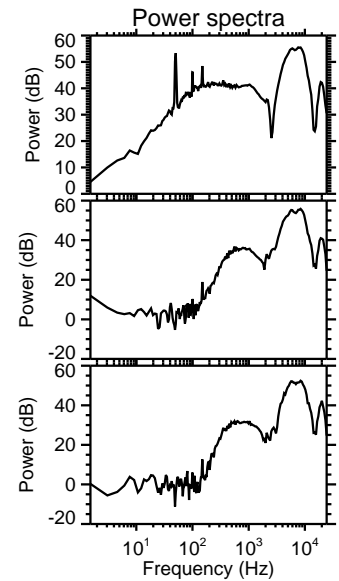
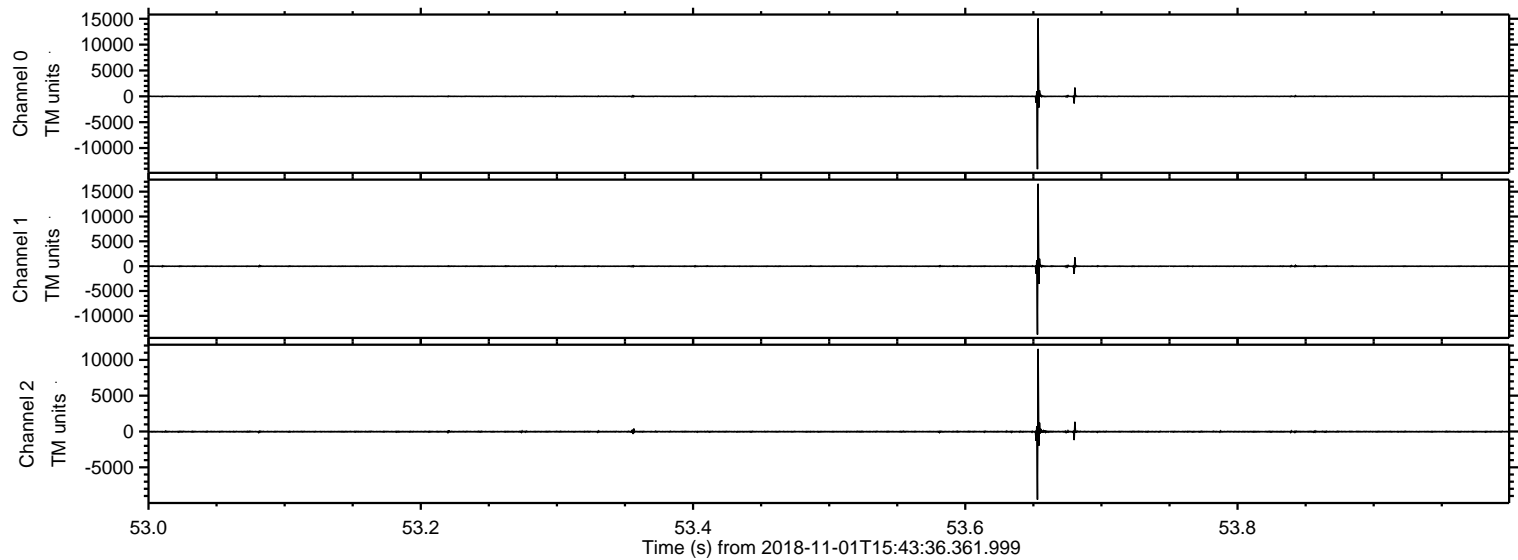


ELMAVAN 3D WAVEFORMS (Measured data sampled at 50 kHz) 51000 packets of 144 samples from 2018-11-01T15:43:36.361.999.

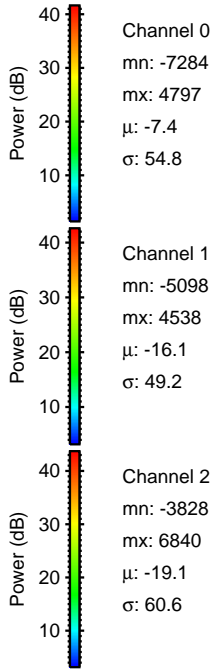
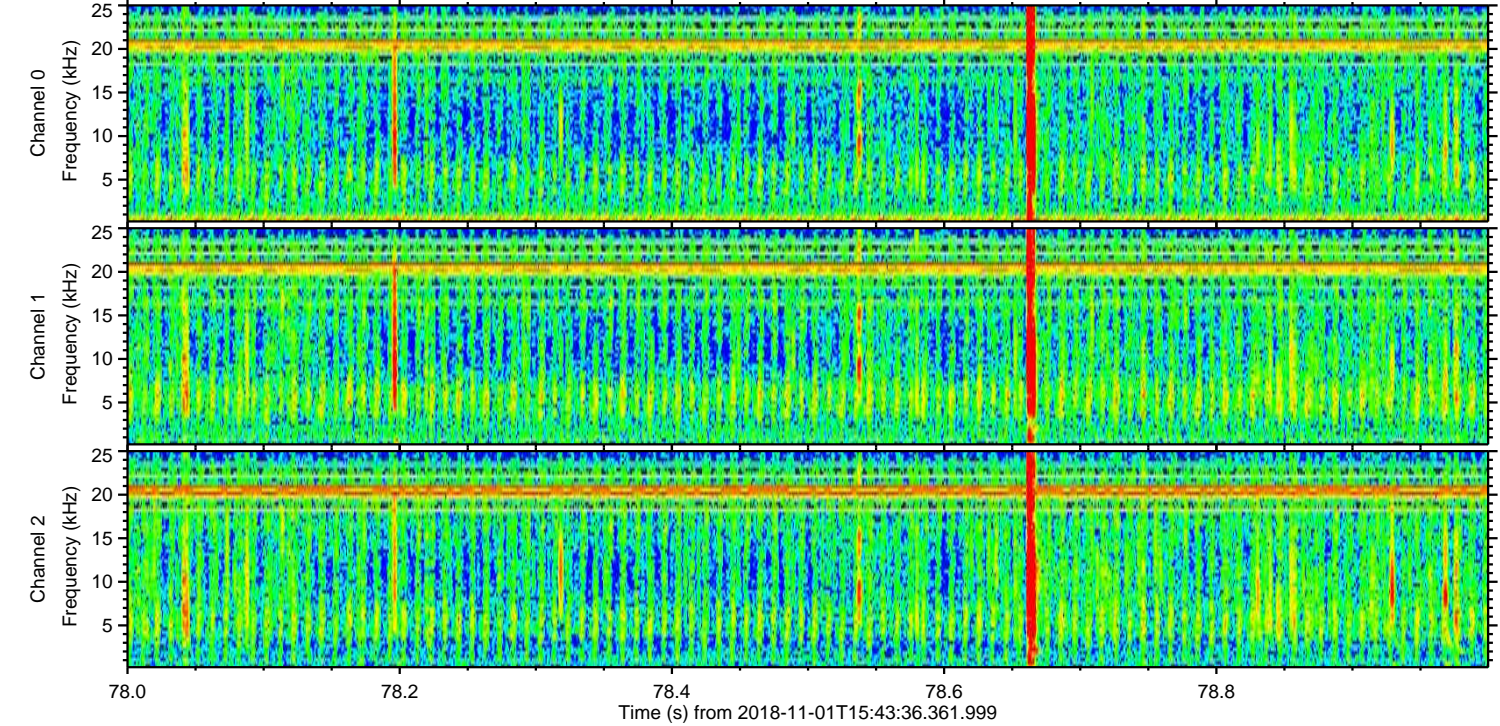
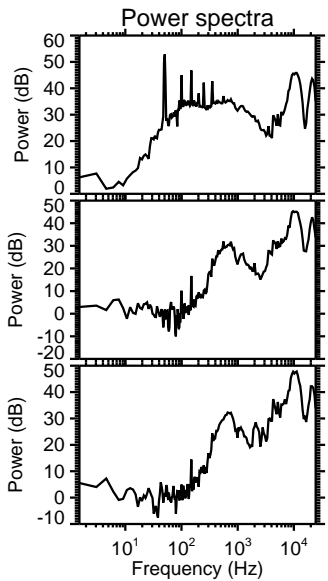
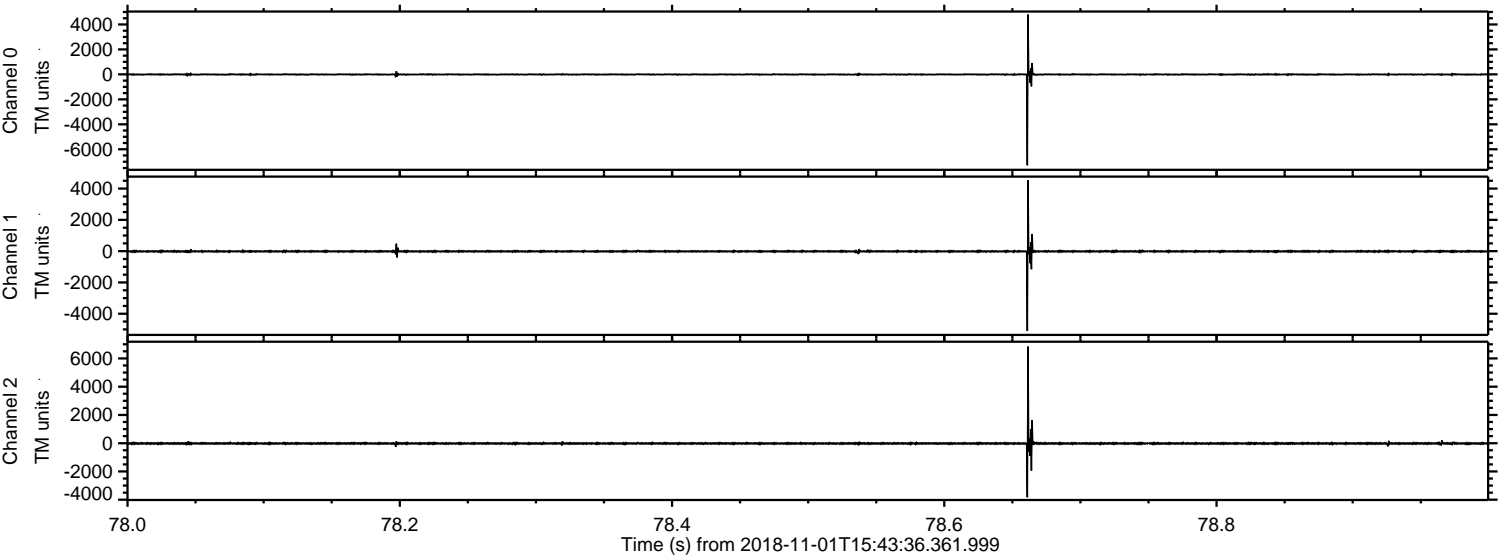
Processed Thu Nov 1 16:51:35 2018 by ELM ver.2012-10-06 from 001__elm20181101_154335__dat00.bin



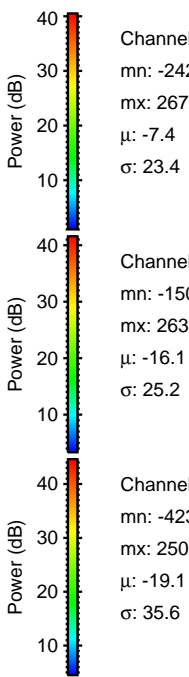
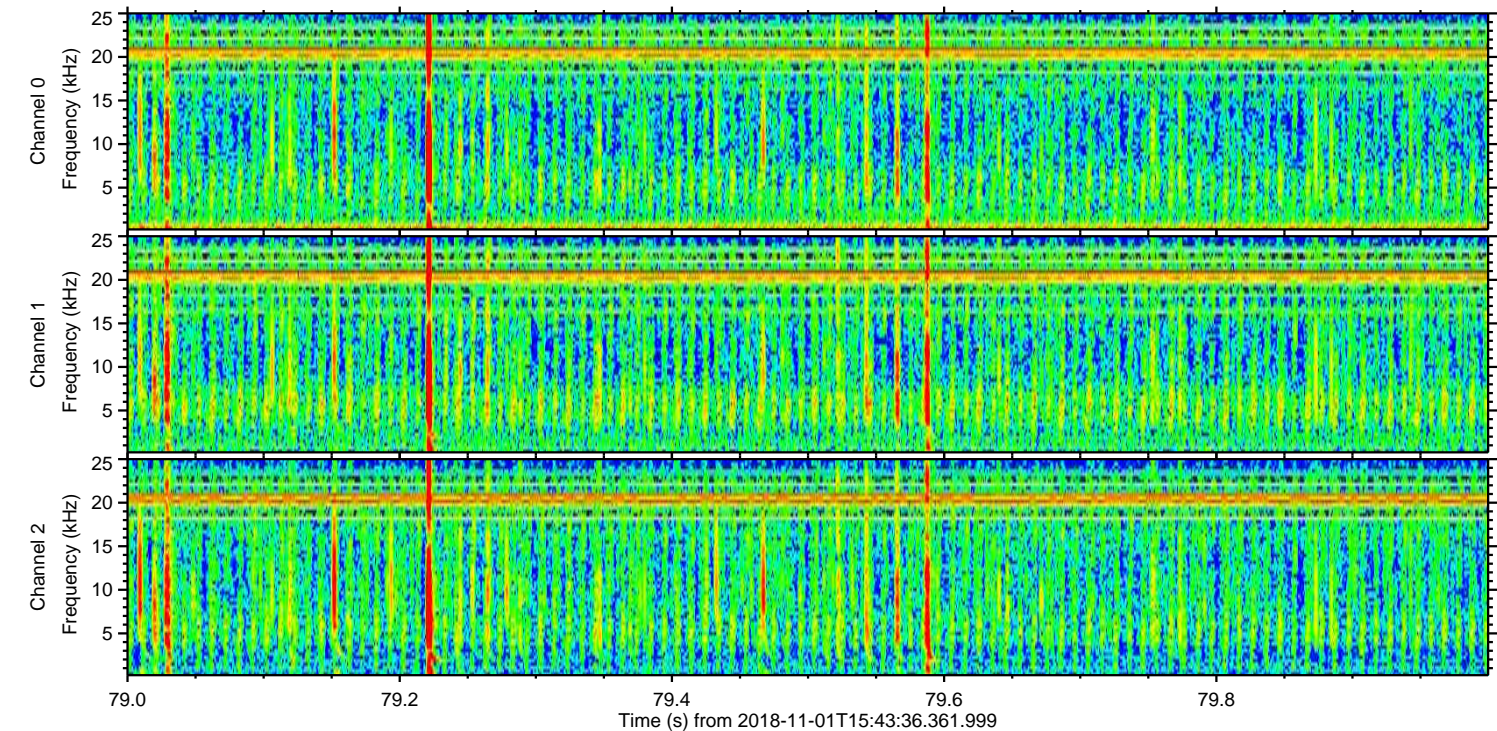
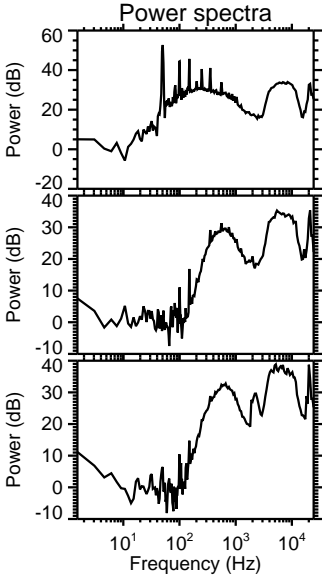
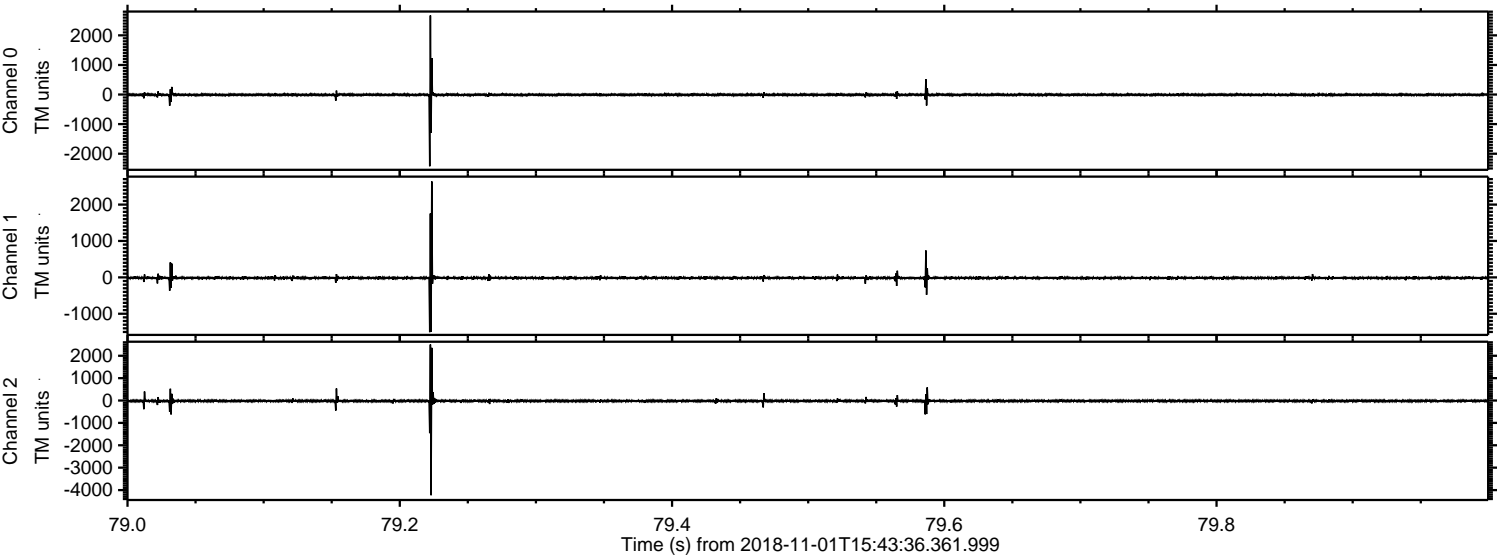
Processed Thu Nov 1 16:51:46 2018 by ELM ver.2012-10-06 from 001__elm20181101_154335__dat00.bin

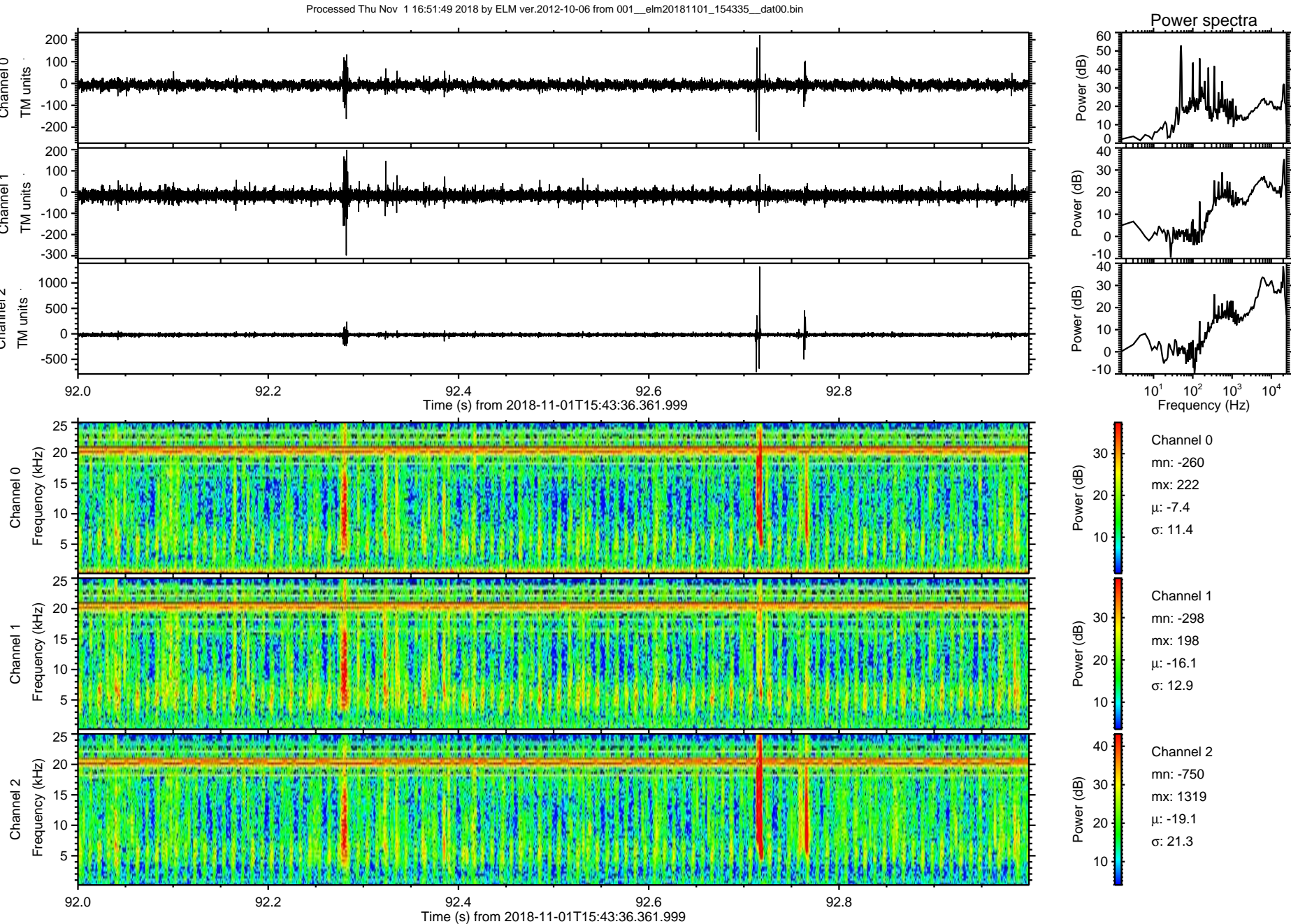


Processed Thu Nov 1 16:51:47 2018 by ELM ver.2012-10-06 from 001__elm20181101_154335__dat00.bin

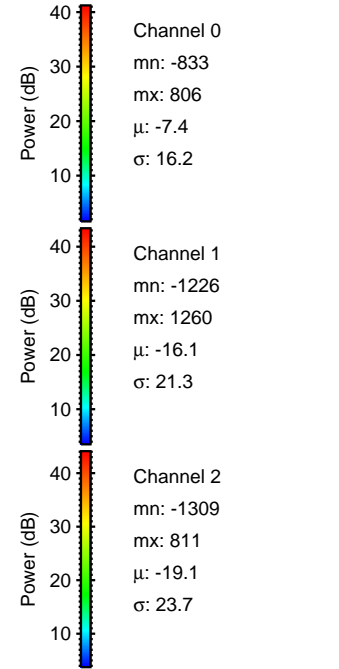
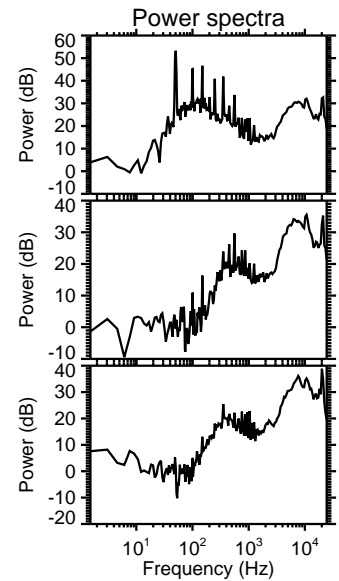
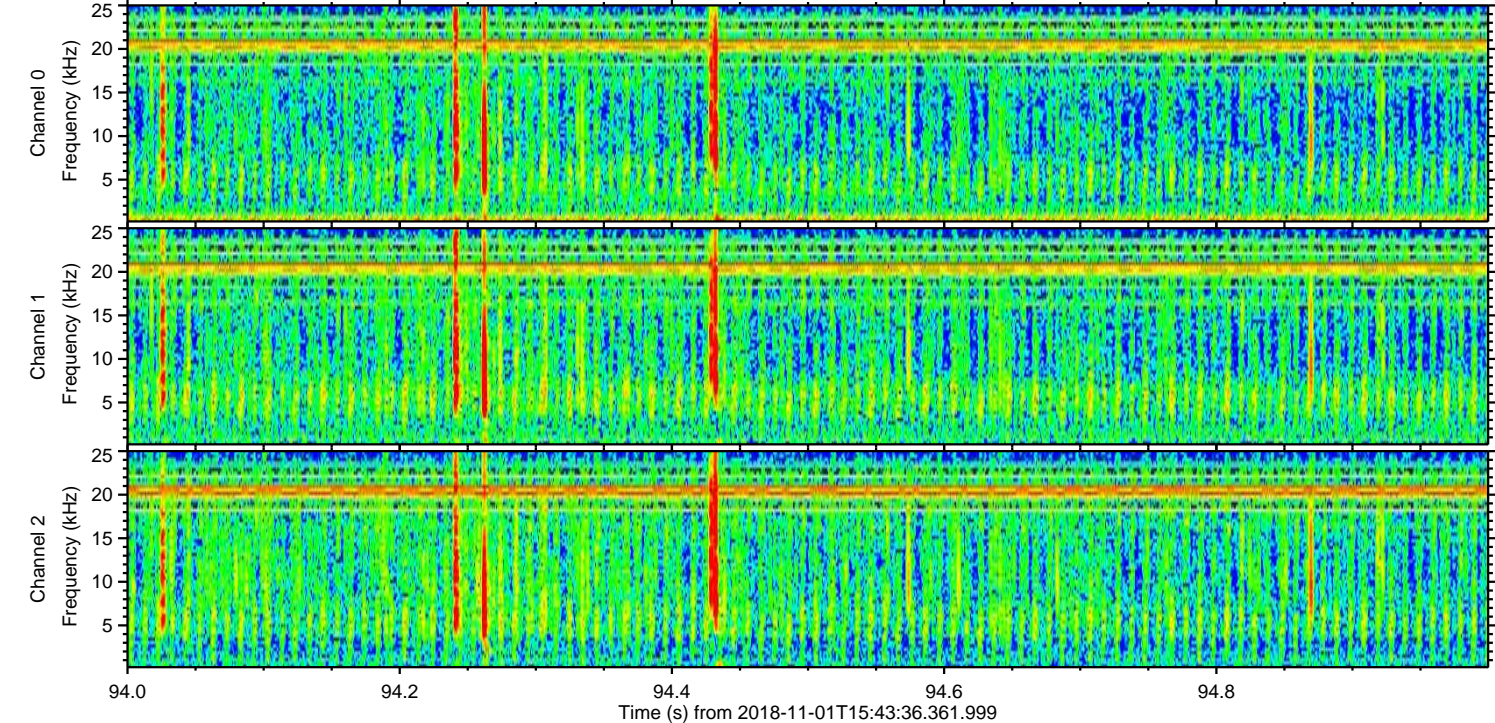
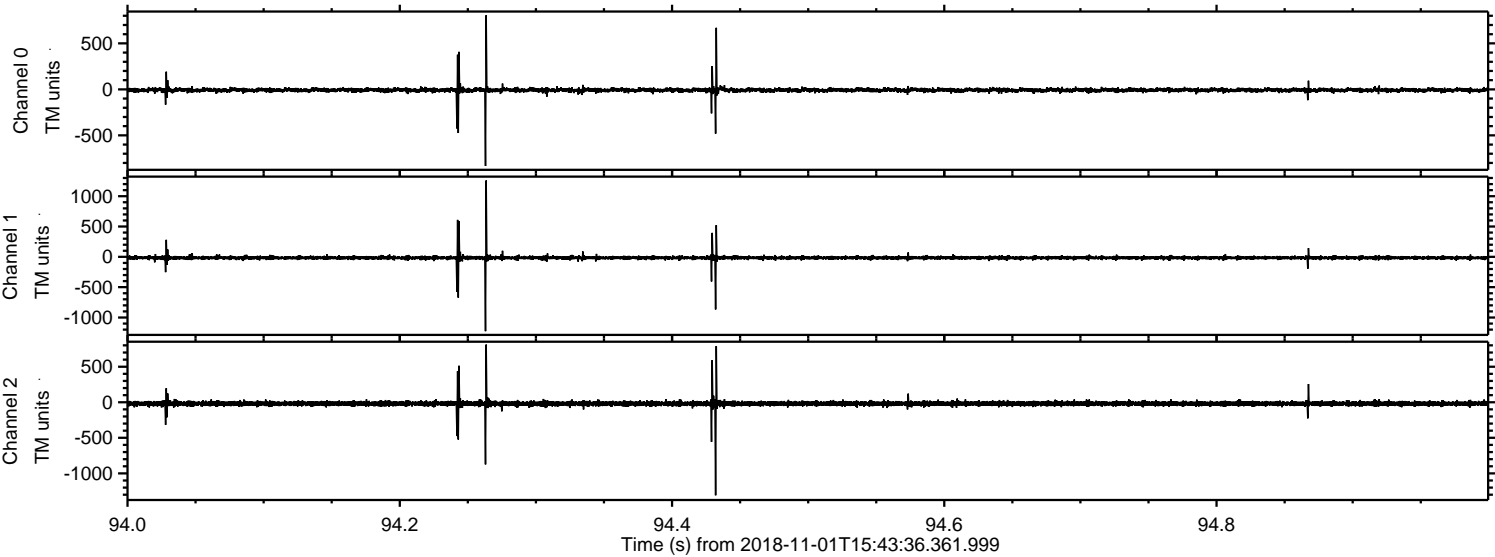


Processed Thu Nov 1 16:51:48 2018 by ELM ver.2012-10-06 from 001__elm20181101_154335__dat00.bin



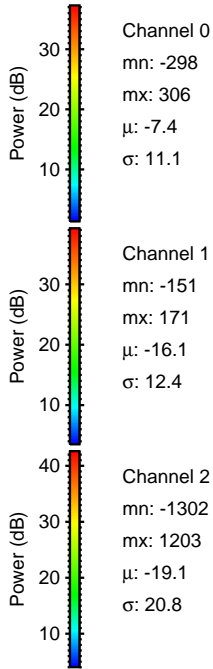
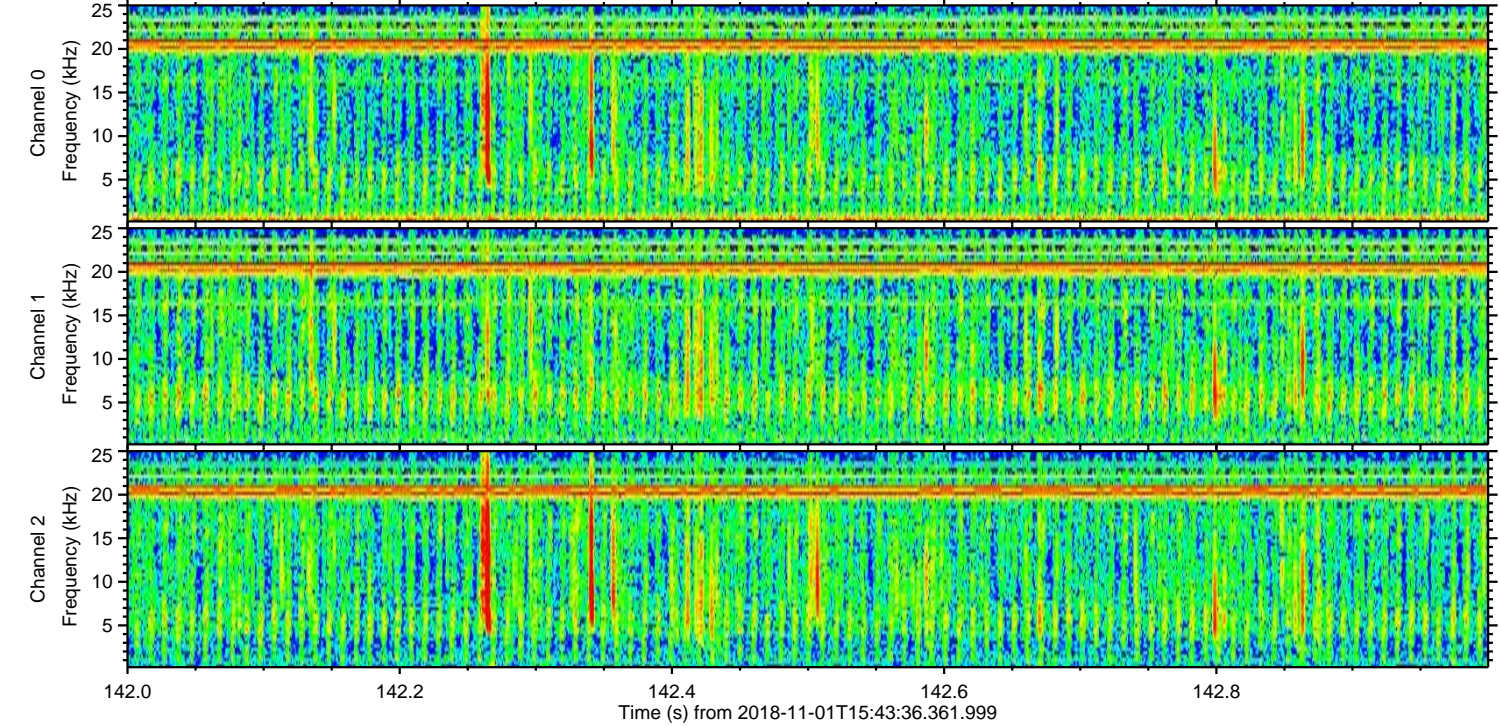
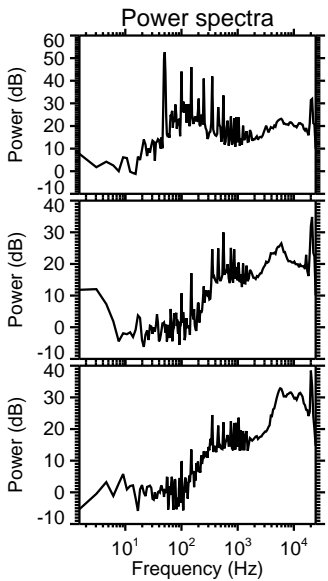
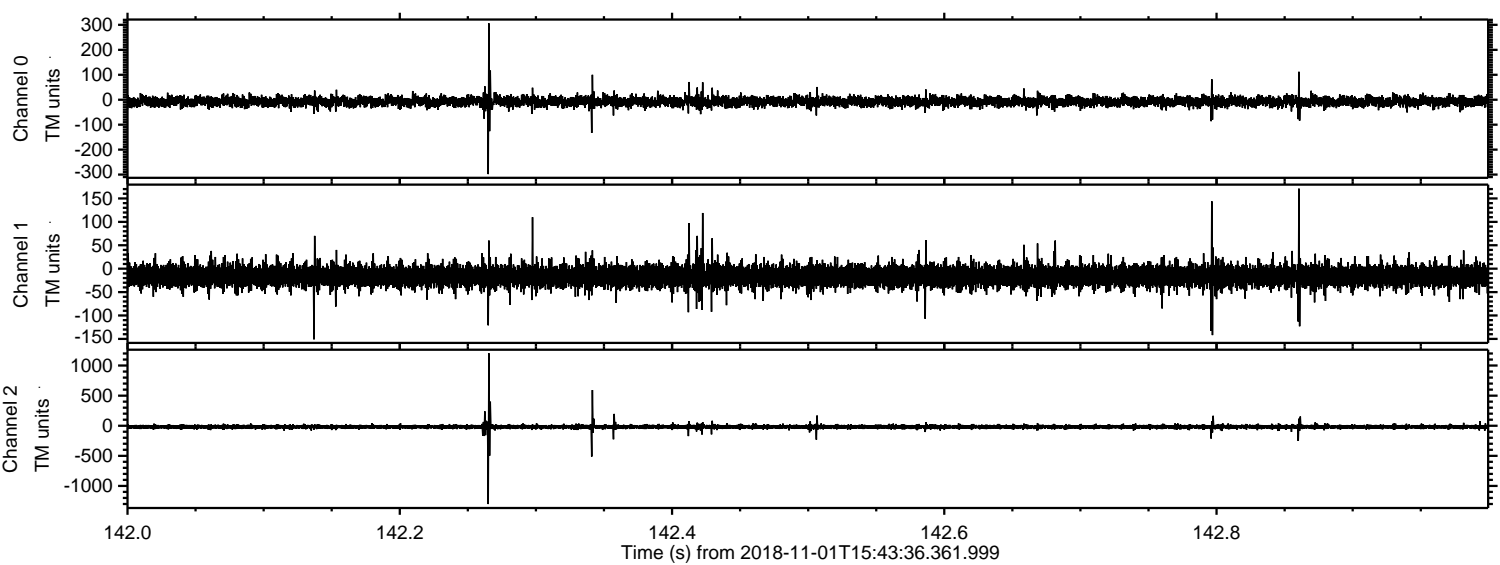


Processed Thu Nov 1 16:51:50 2018 by ELM ver.2012-10-06 from 001__elm20181101_154335__dat00.bin



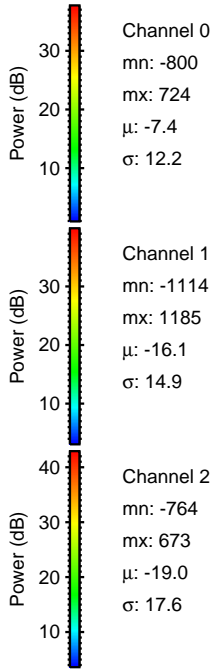
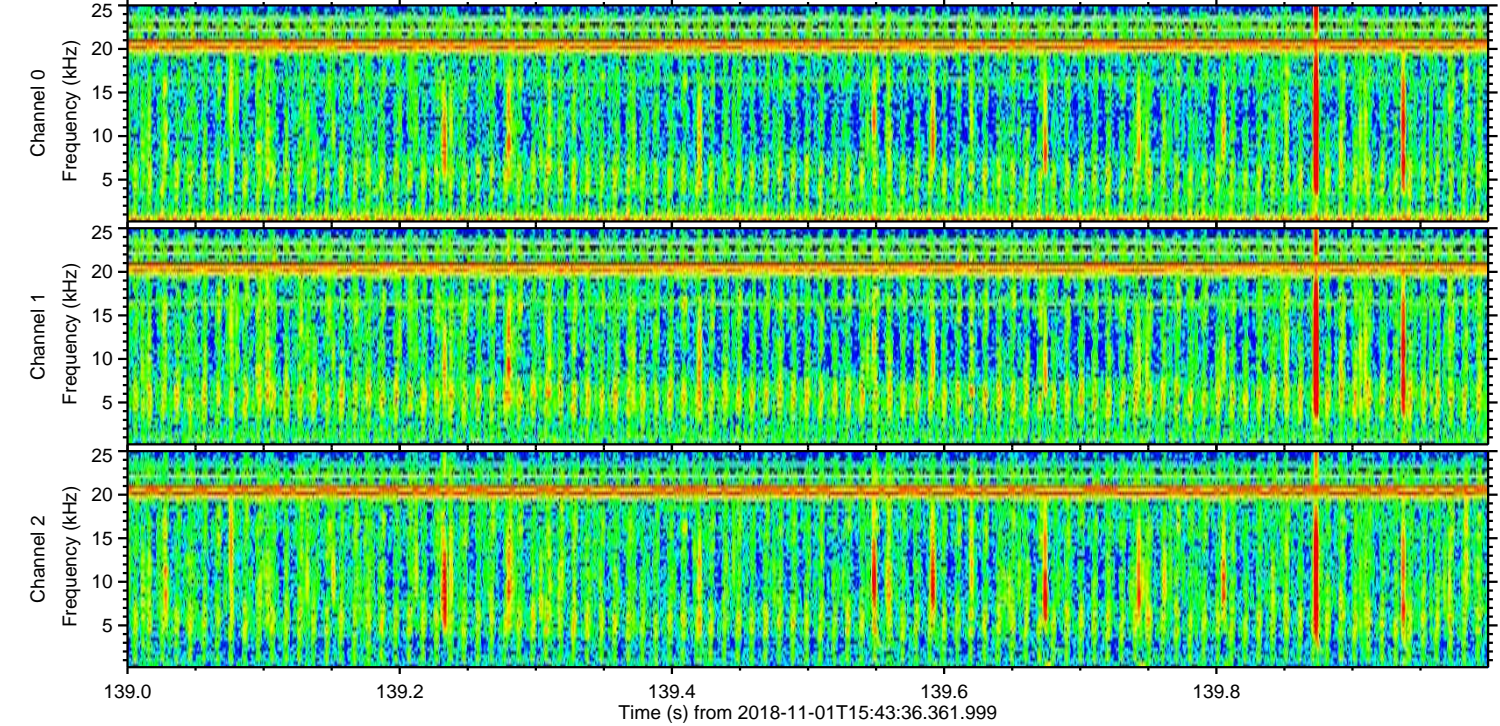
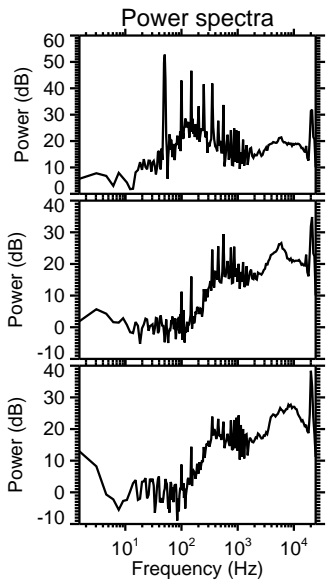
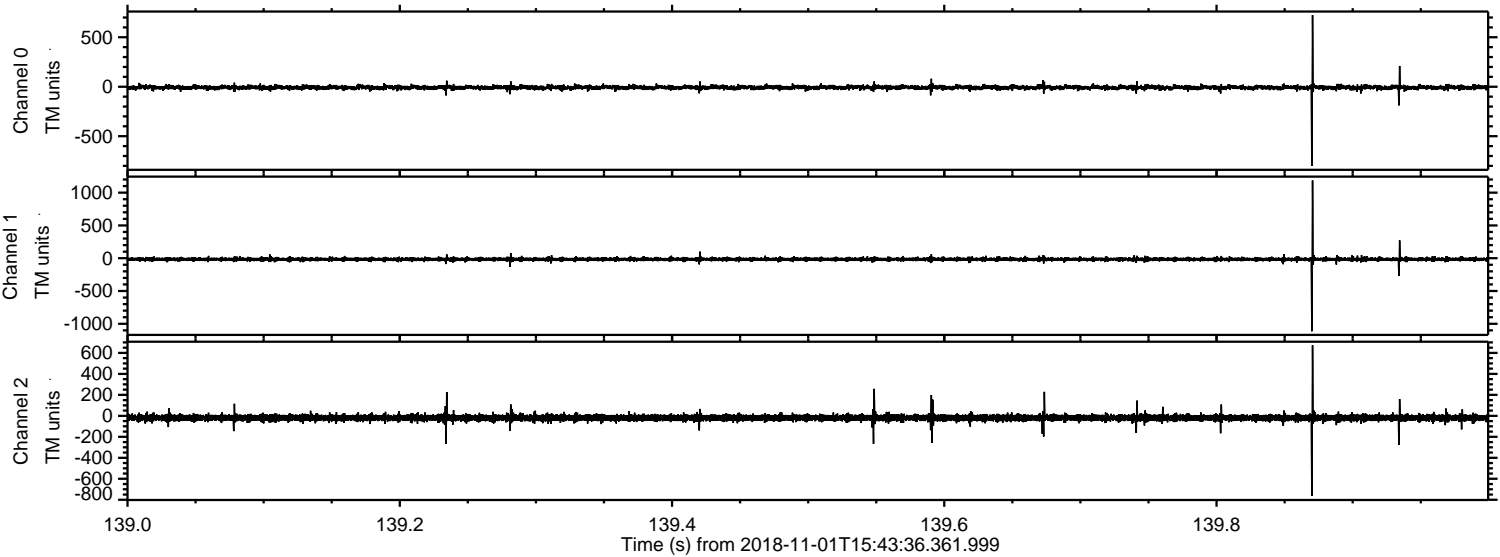
ELMAVAN 3D WAVEFORMS (Measured data sampled at 50 kHz) 51000 packets of 144 samples from 2018-11-01T15:43:36.361.999. Part 143/147

Processed Thu Nov 1 16:51:50 2018 by ELM ver.2012-10-06 from 001__elm20181101_154335__dat00.bin



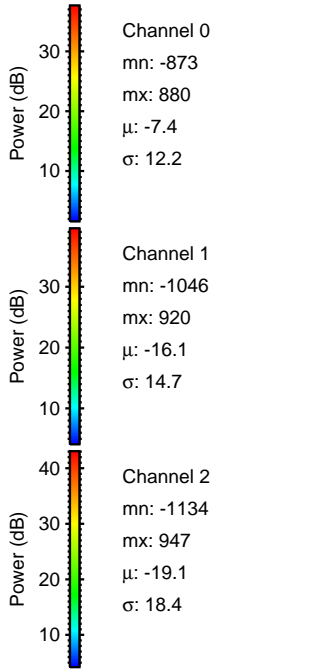
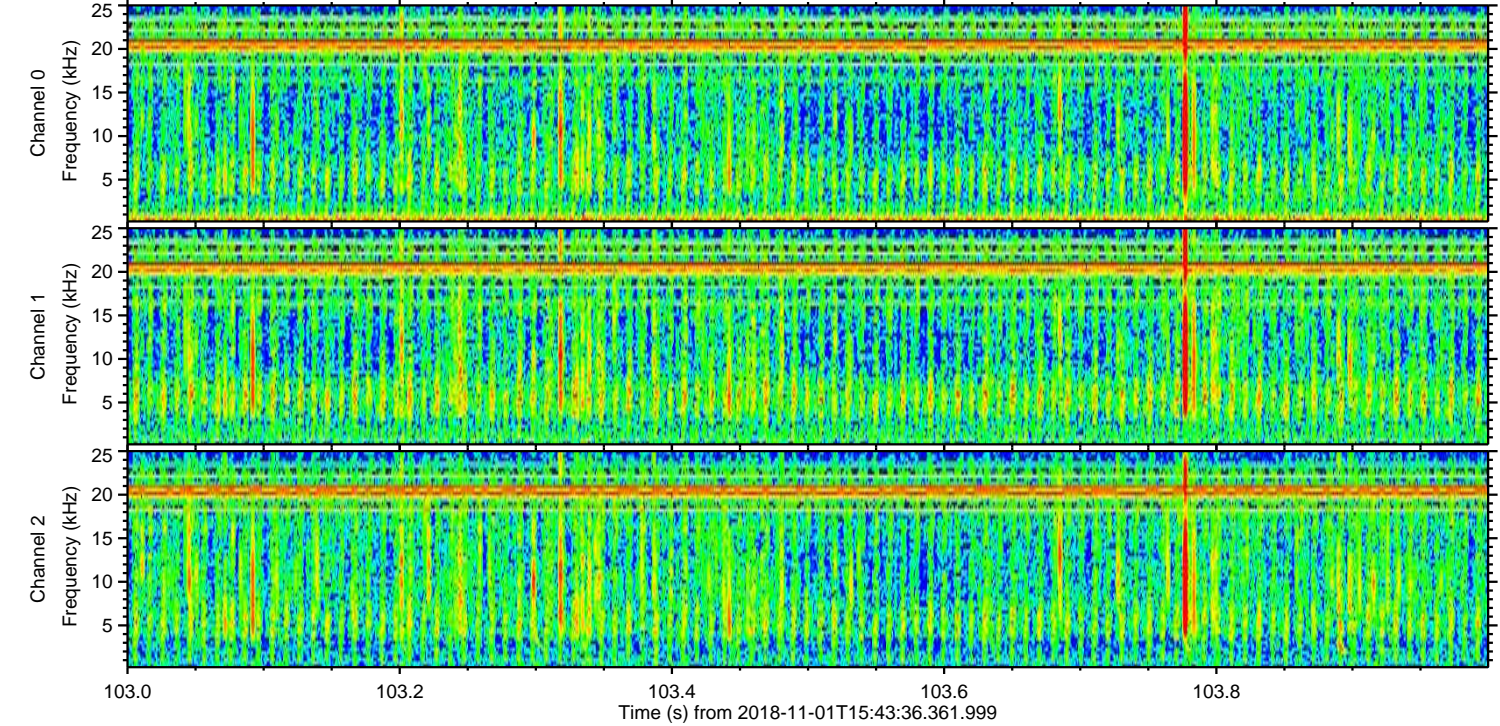
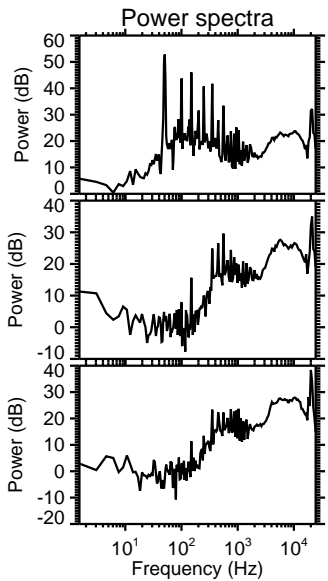
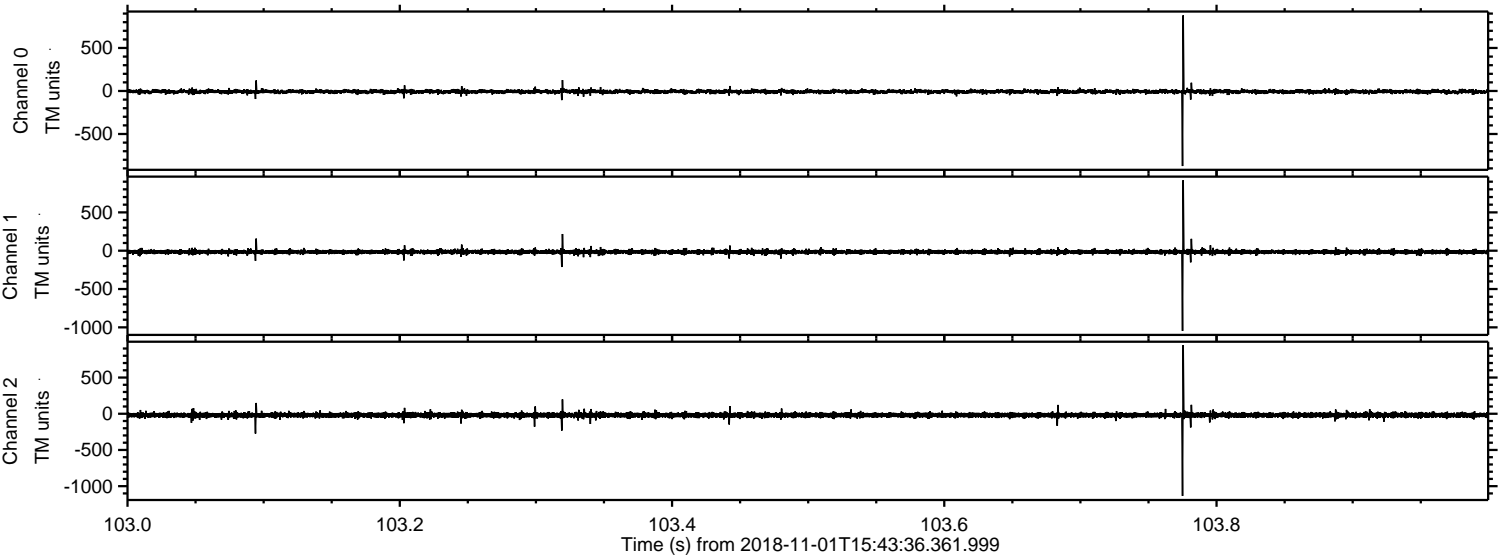
ELMAVAN 3D WAVEFORMS (Measured data sampled at 50 kHz) 51000 packets of 144 samples from 2018-11-01T15:43:36.361.999. Part 140/147

Processed Thu Nov 1 16:51:51 2018 by ELM ver.2012-10-06 from 001__elm20181101_154335__dat00.bin

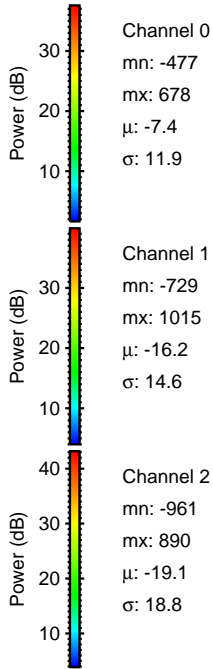
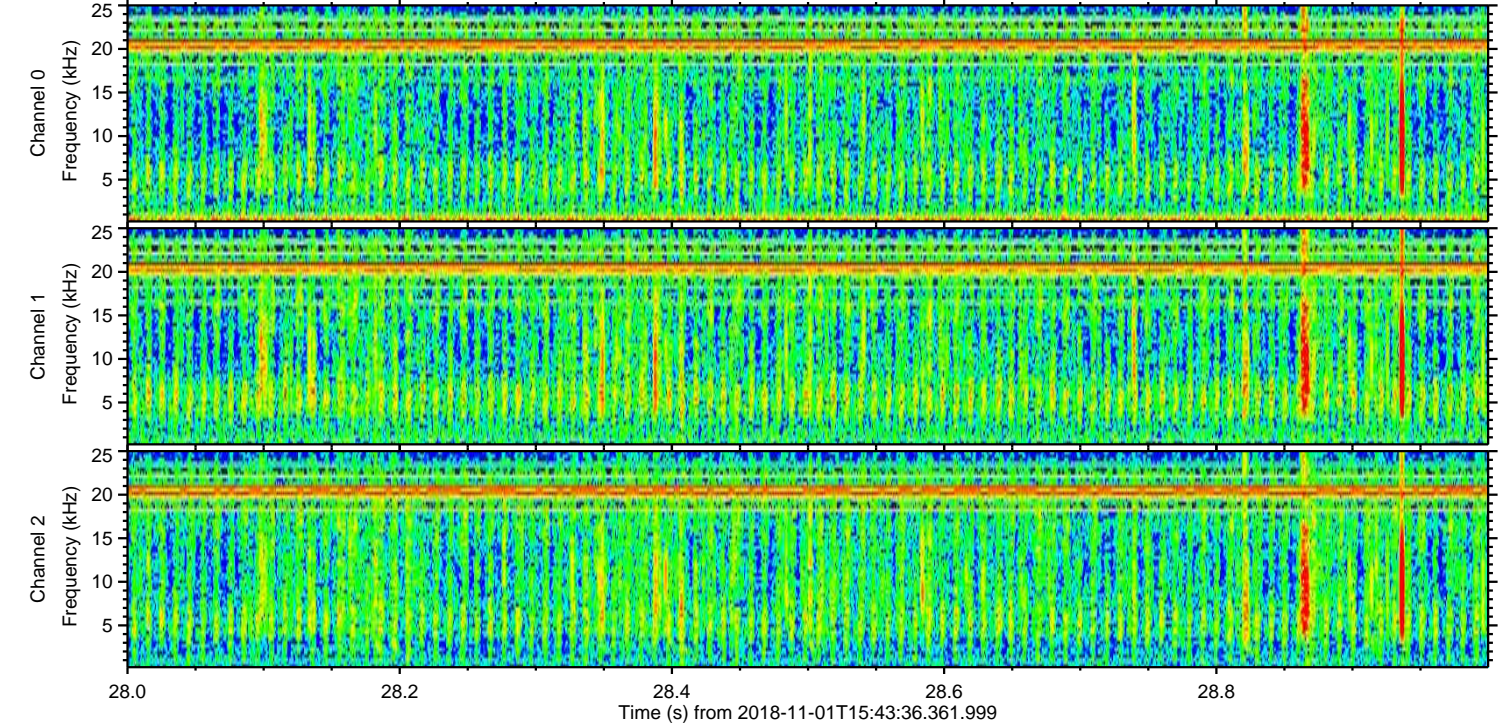
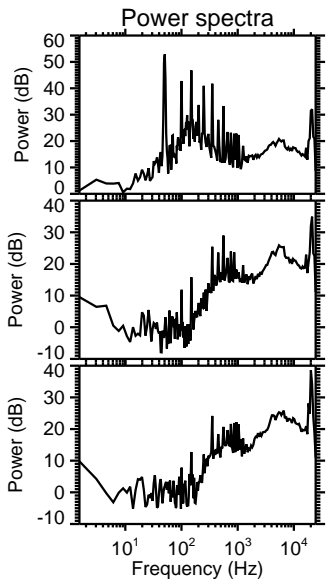
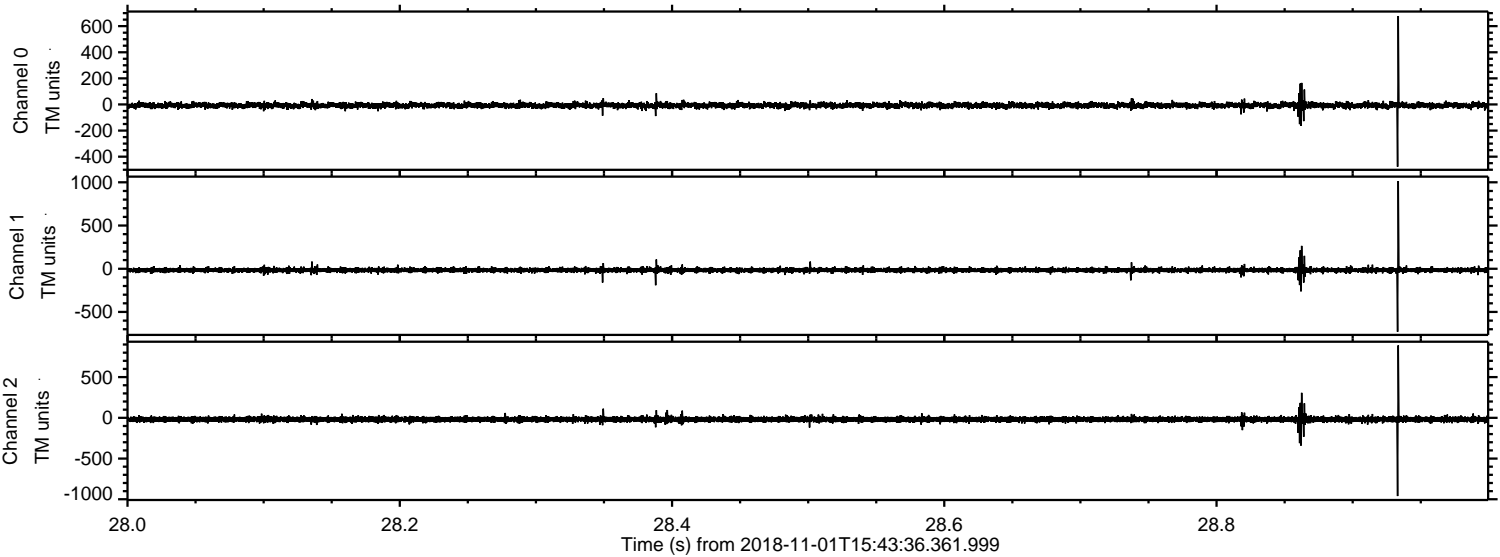


ELMAVAN 3D WAVEFORMS (Measured data sampled at 50 kHz) 51000 packets of 144 samples from 2018-11-01T15:43:36.361.999. Part 104/147

Processed Thu Nov 1 16:51:52 2018 by ELM ver.2012-10-06 from 001__elm20181101_154335__dat00.bin



Processed Thu Nov 1 16:51:53 2018 by ELM ver.2012-10-06 from 001__elm20181101_154335__dat00.bin



Channel 0
mn: -477
mx: 678
 μ : -7.4
 σ : 11.9

Channel 1
mn: -729
mx: 1015
 μ : -16.2
 σ : 14.6

Channel 2
mn: -961
mx: 890
 μ : -19.1
 σ : 18.8

Processed Thu Nov 1 16:51:54 2018 by ELM ver.2012-10-06 from 001__elm20181101_154335__dat00.bin

