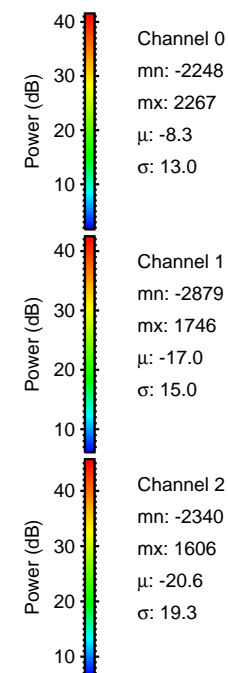
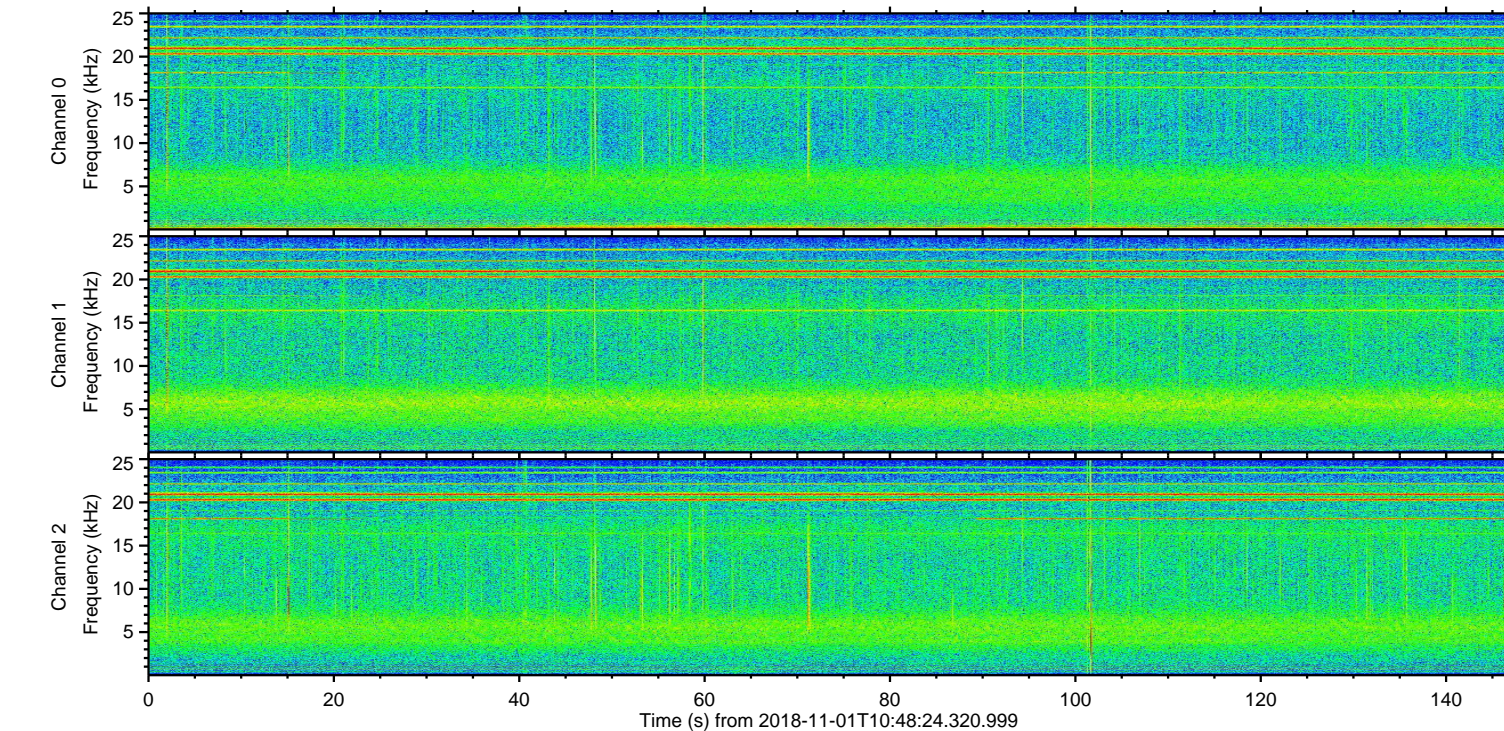
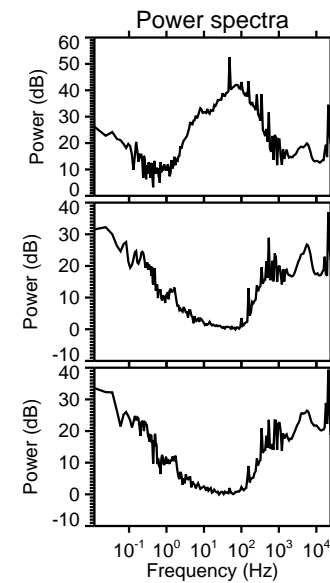
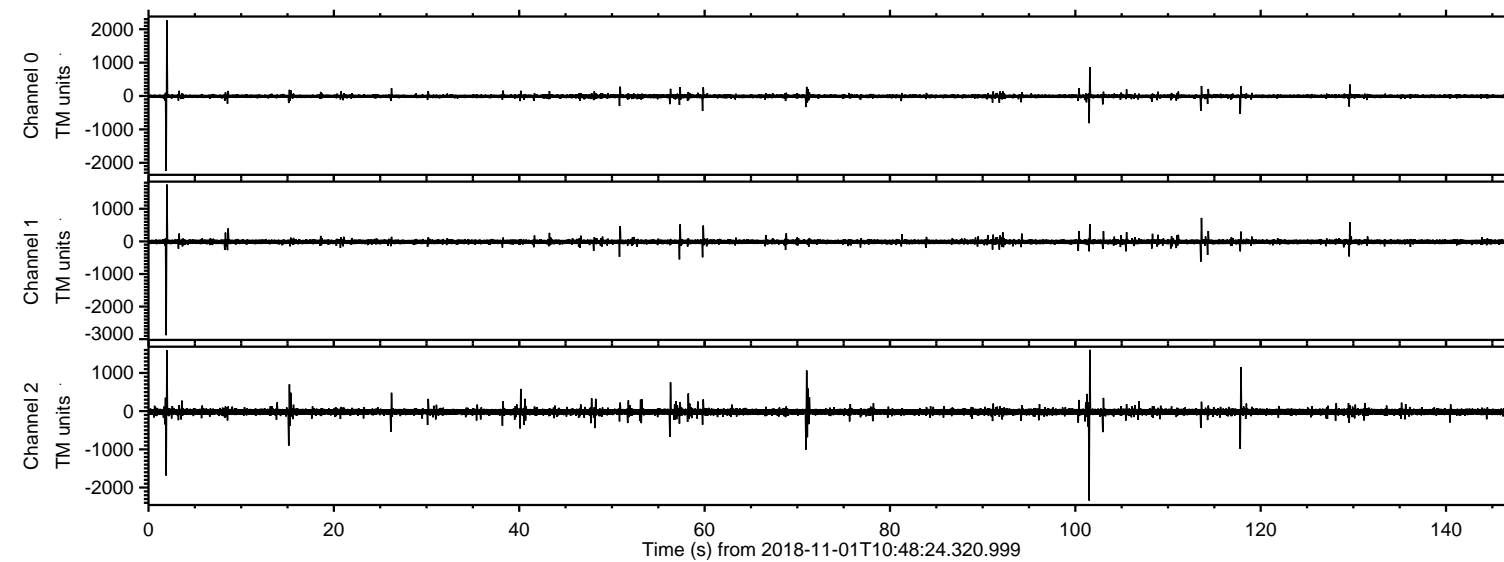
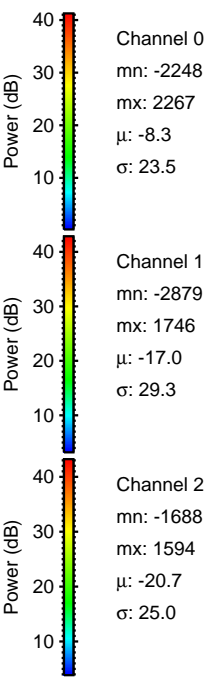
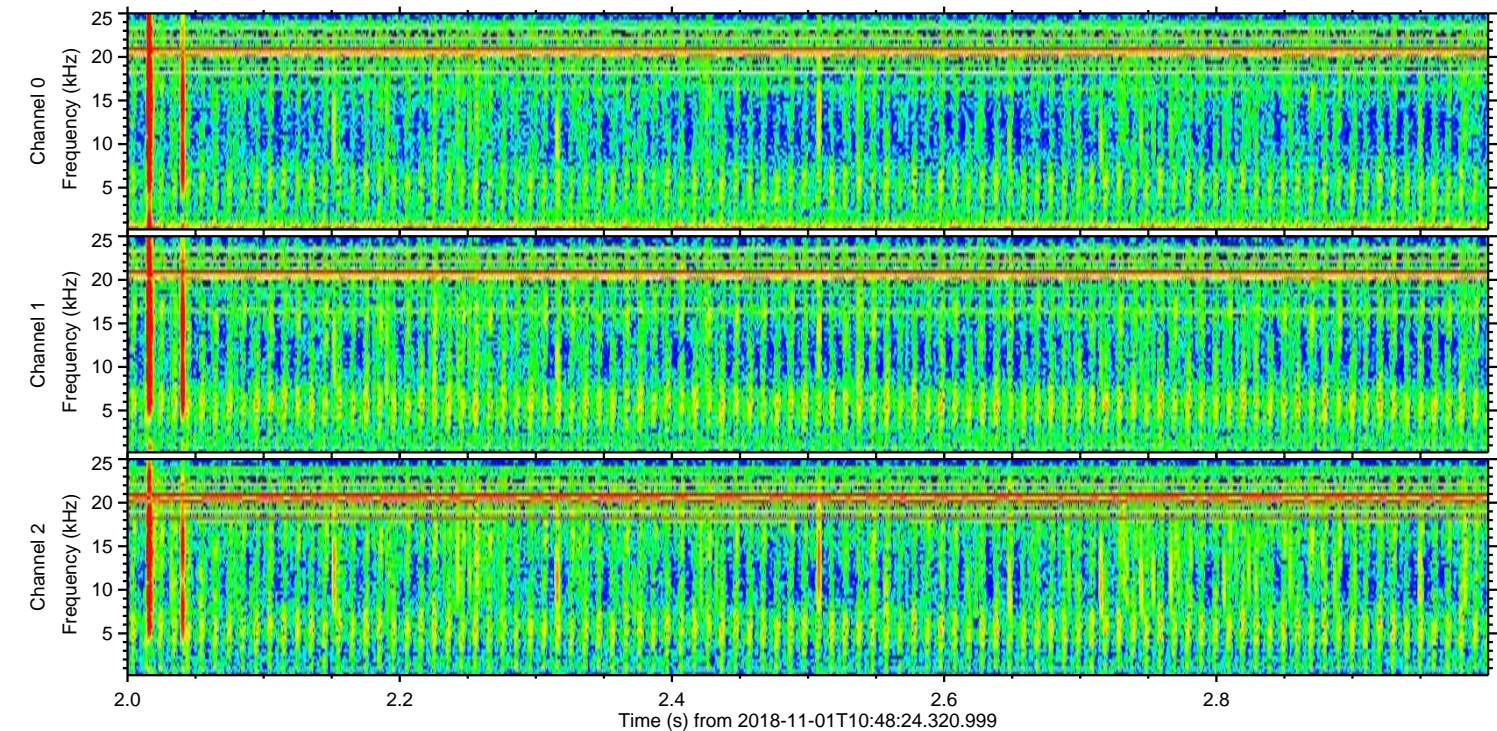
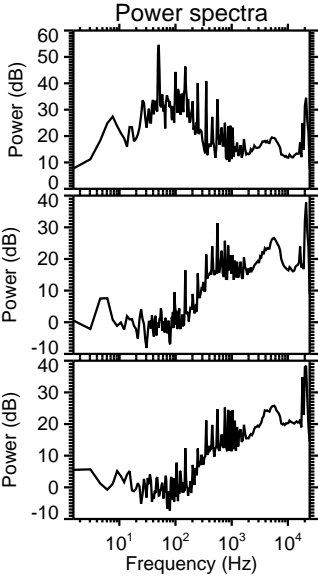
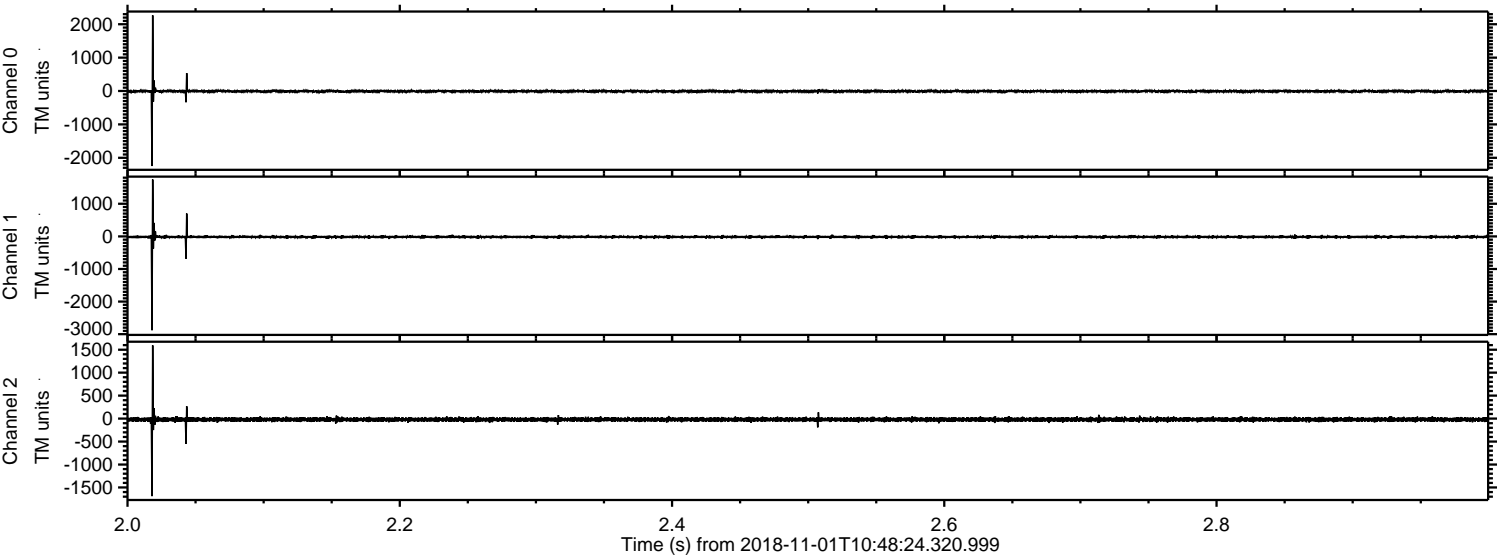


ELMAVAN 3D WAVEFORMS (Measured data sampled at 50 kHz) 51000 packets of 144 samples from 2018-11-01T10:48:24.320.999.

Processed Thu Nov 1 11:56:41 2018 by ELM ver.2012-10-06 from 001__elm20181101_104823__dat00.bin

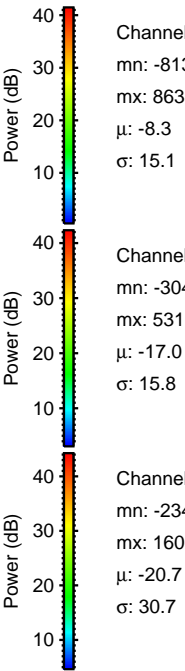
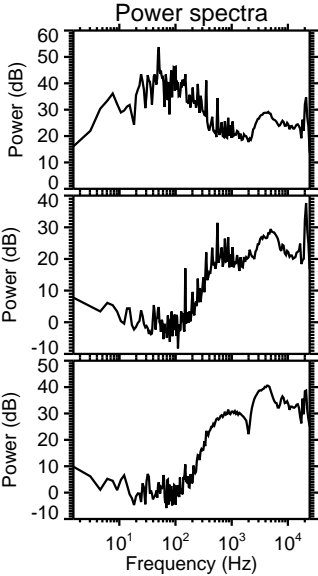
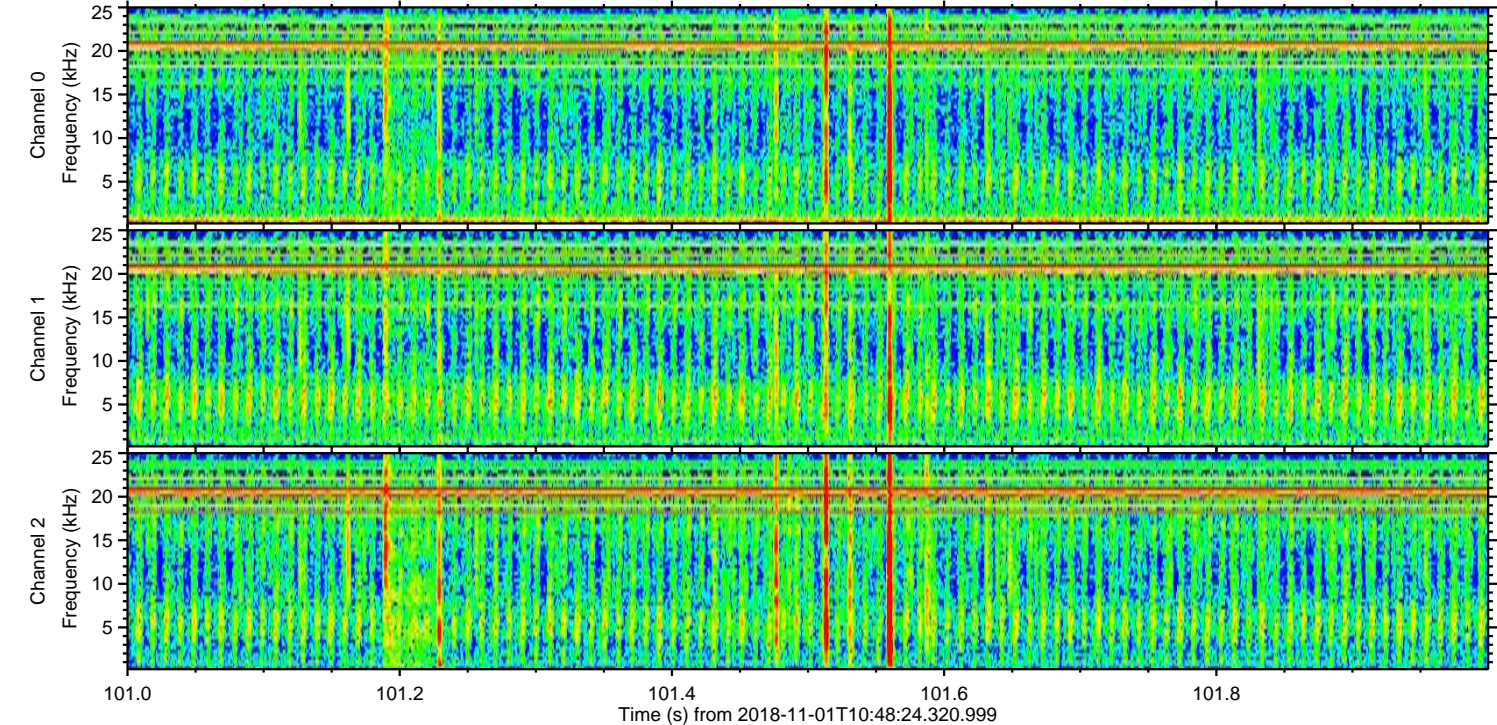
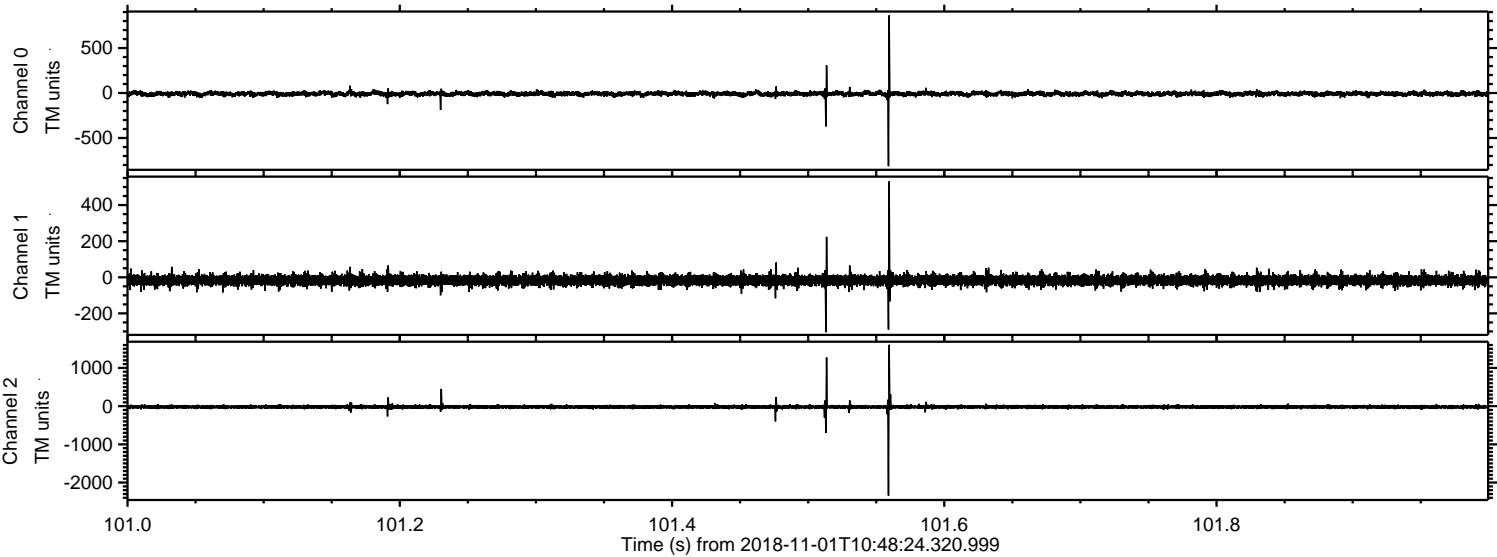


Processed Thu Nov 1 11:56:49 2018 by ELM ver.2012-10-06 from 001__elm20181101_104823__dat00.bin



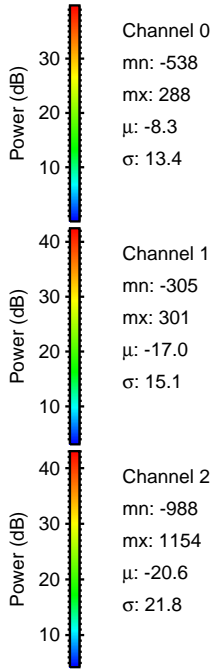
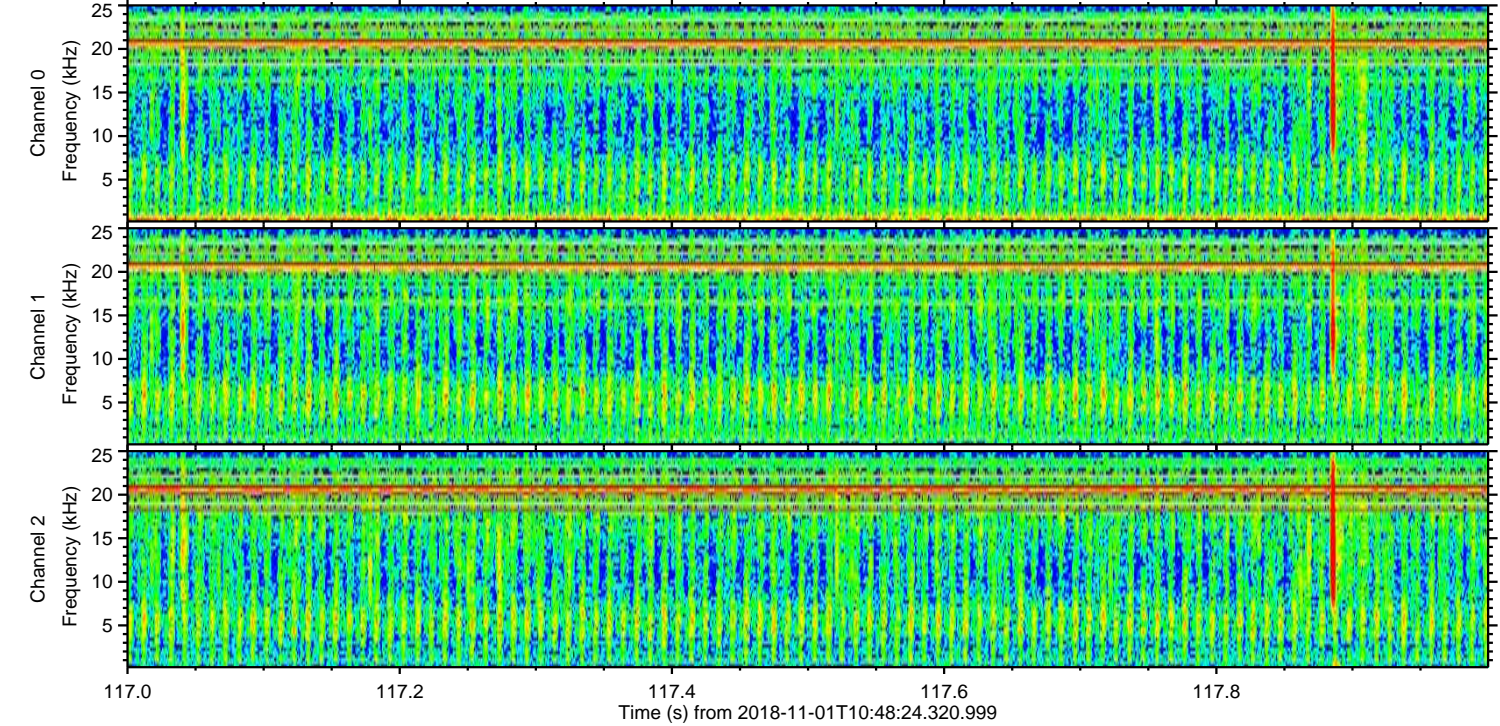
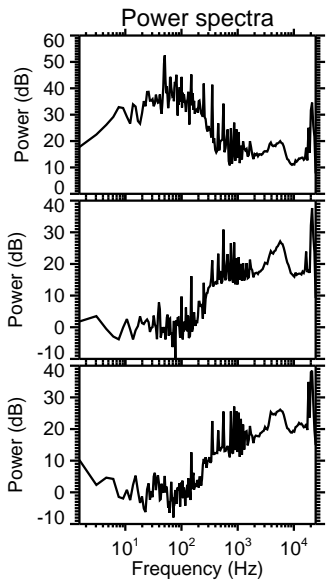
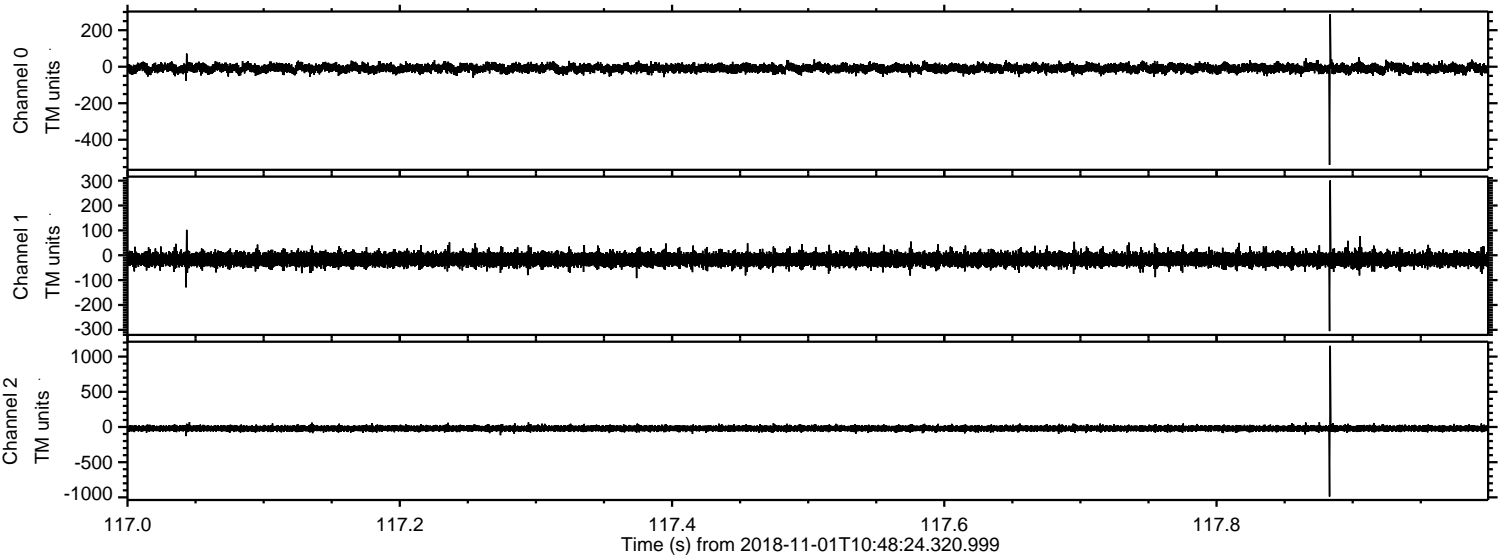
ELMAVAN 3D WAVEFORMS (Measured data sampled at 50 kHz) 51000 packets of 144 samples from 2018-11-01T10:48:24.320.999. Part 102/147

Processed Thu Nov 1 11:56:50 2018 by ELM ver.2012-10-06 from 001__elm20181101_104823__dat00.bin

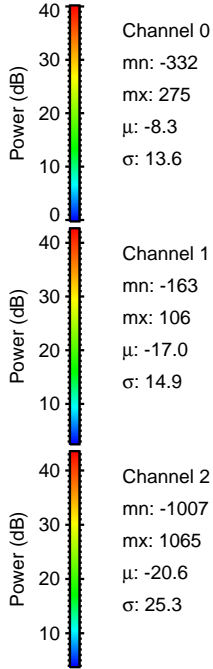
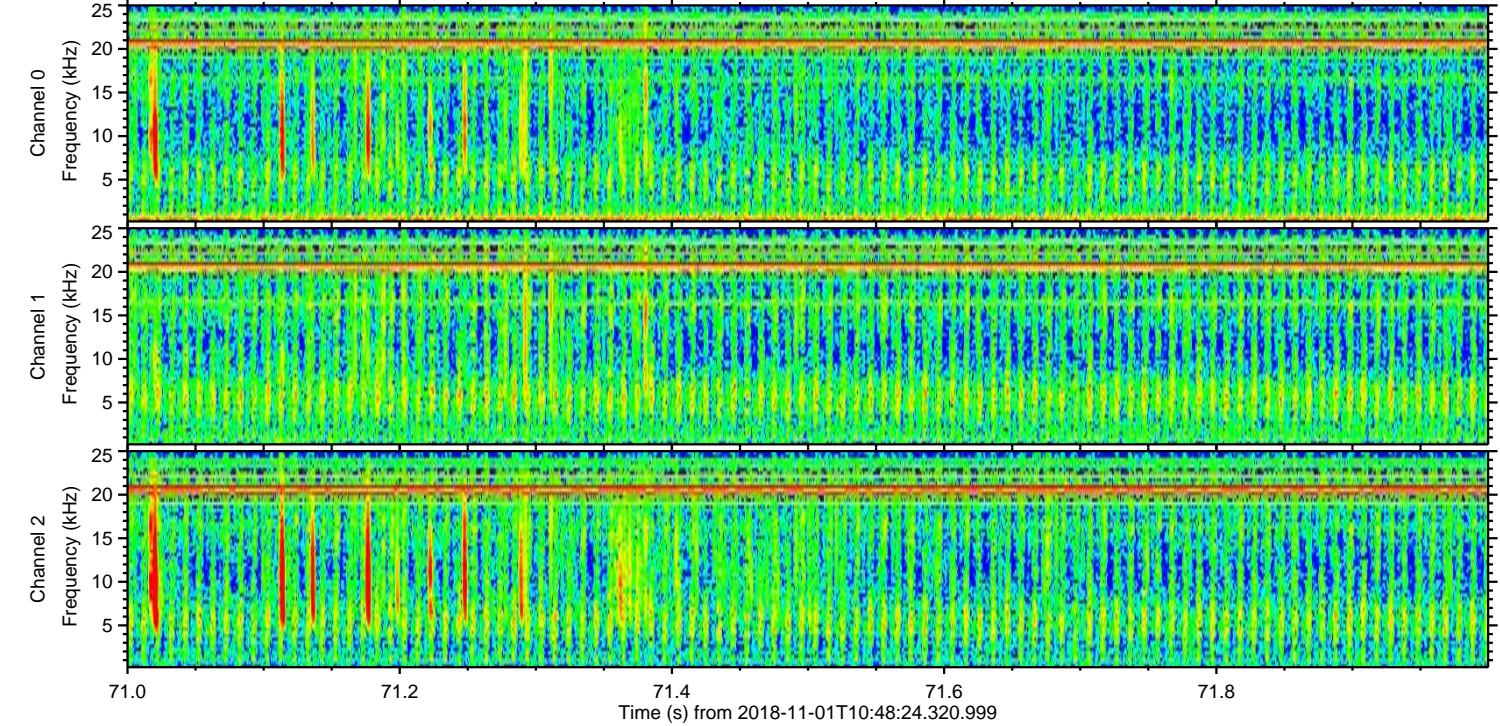
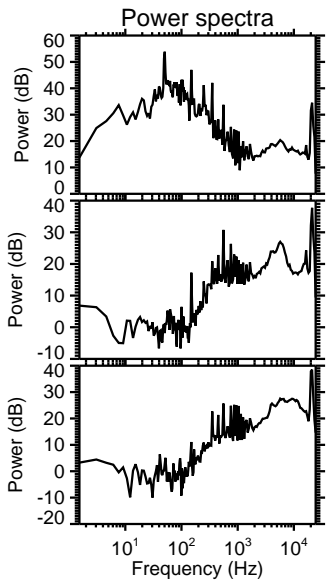
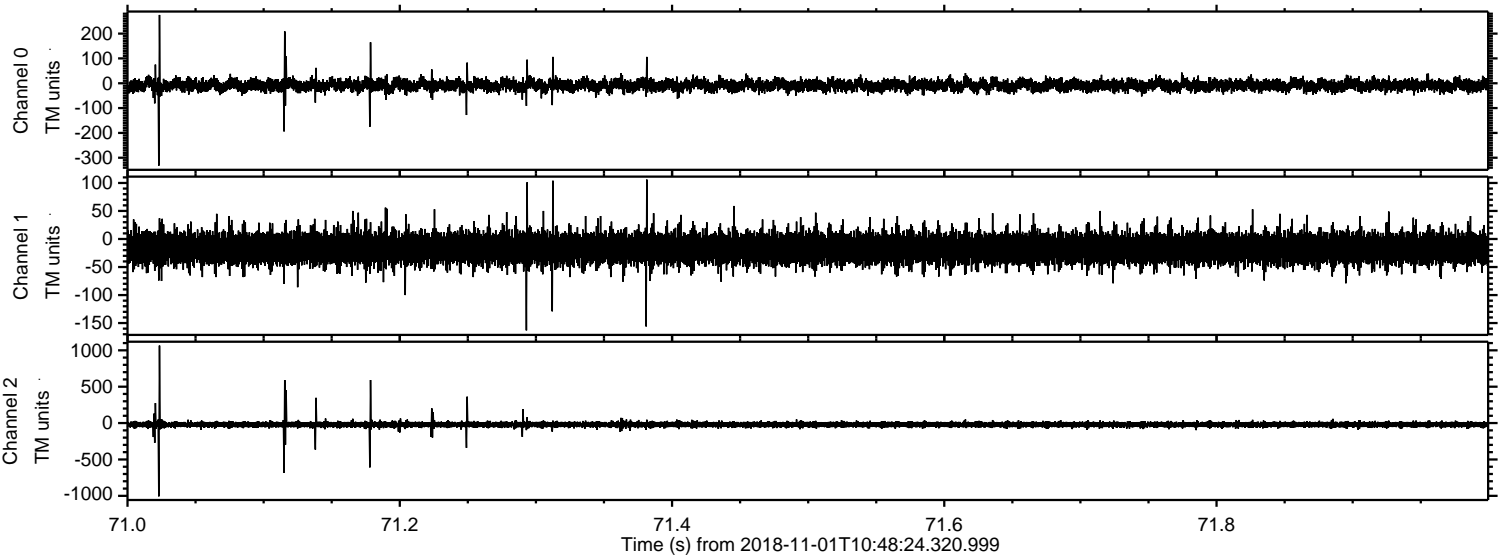


ELMAVAN 3D WAVEFORMS (Measured data sampled at 50 kHz) 51000 packets of 144 samples from 2018-11-01T10:48:24.320.999. Part 118/147

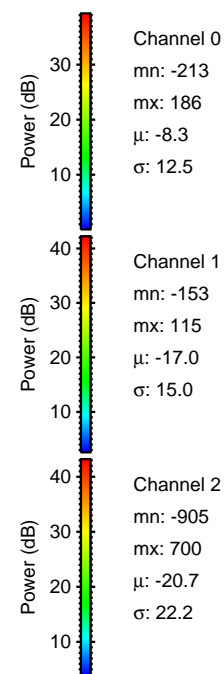
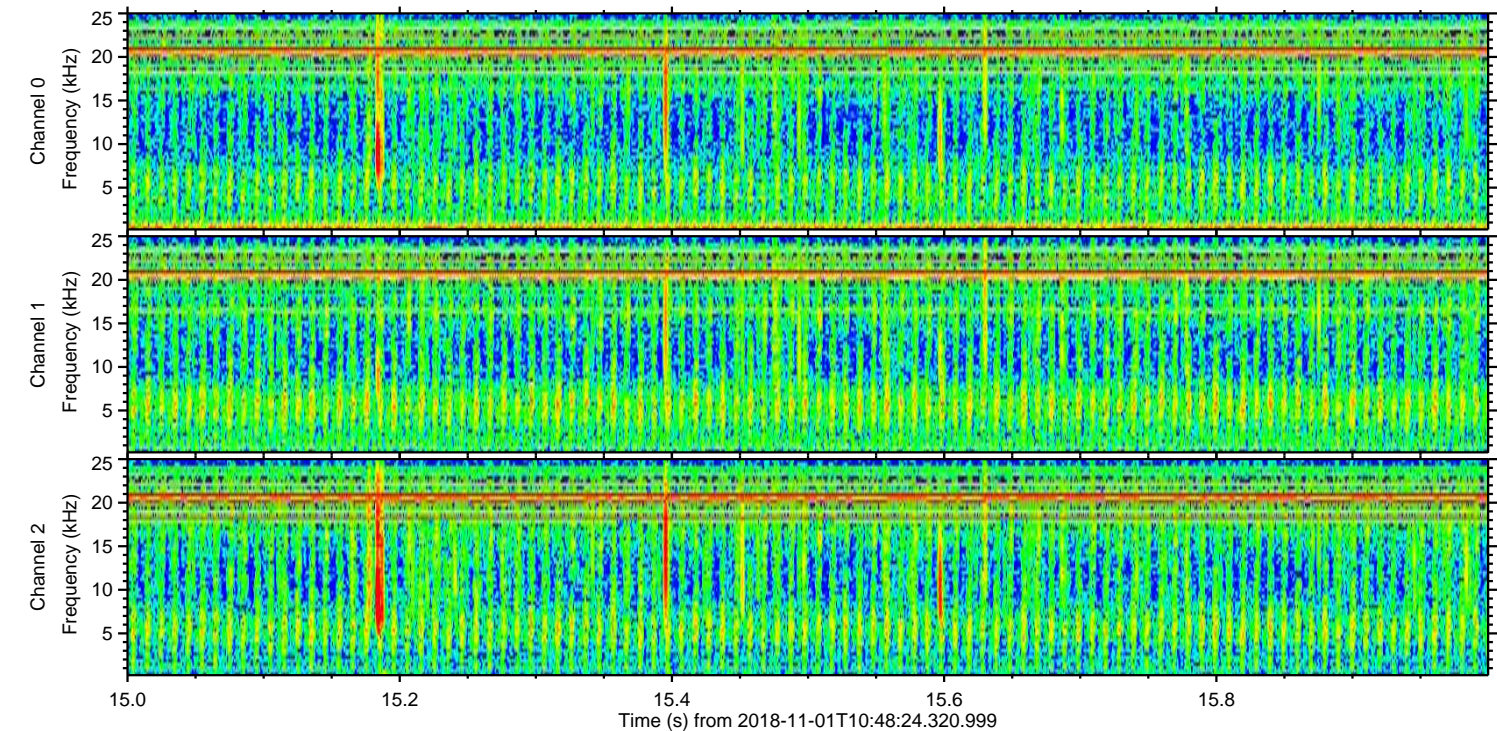
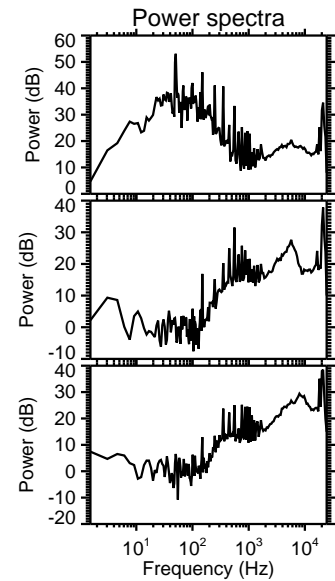
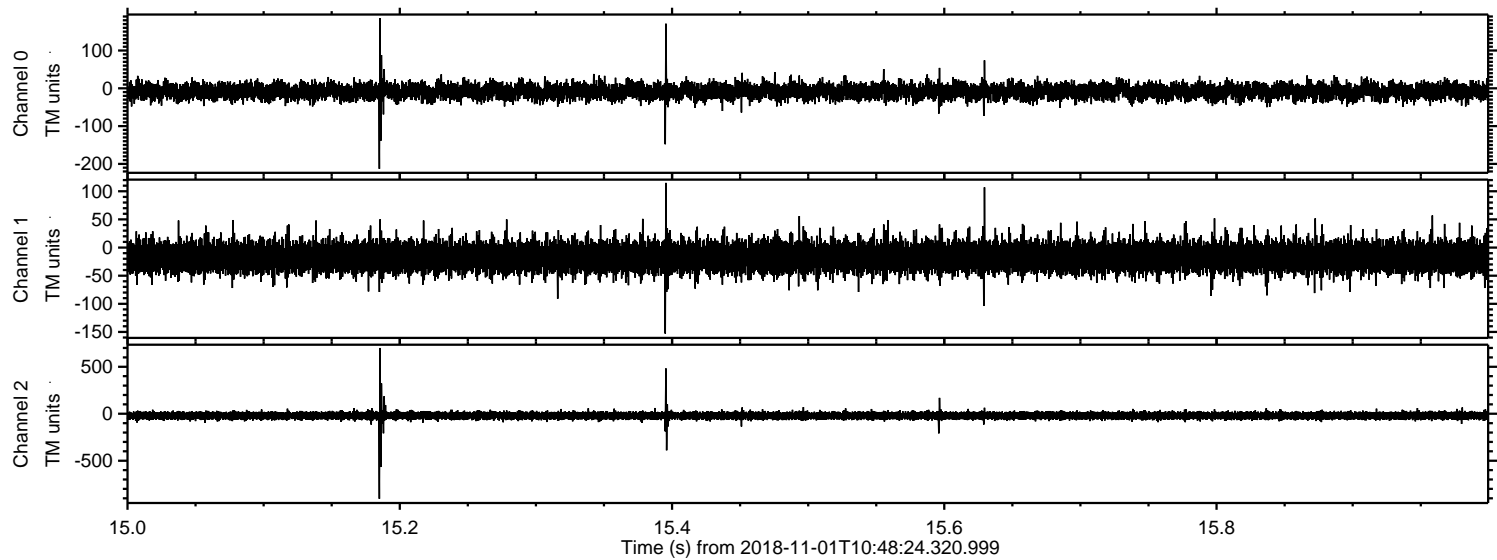
Processed Thu Nov 1 11:56:51 2018 by ELM ver.2012-10-06 from 001__elm20181101_104823__dat00.bin



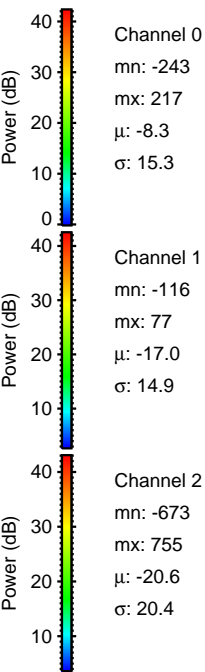
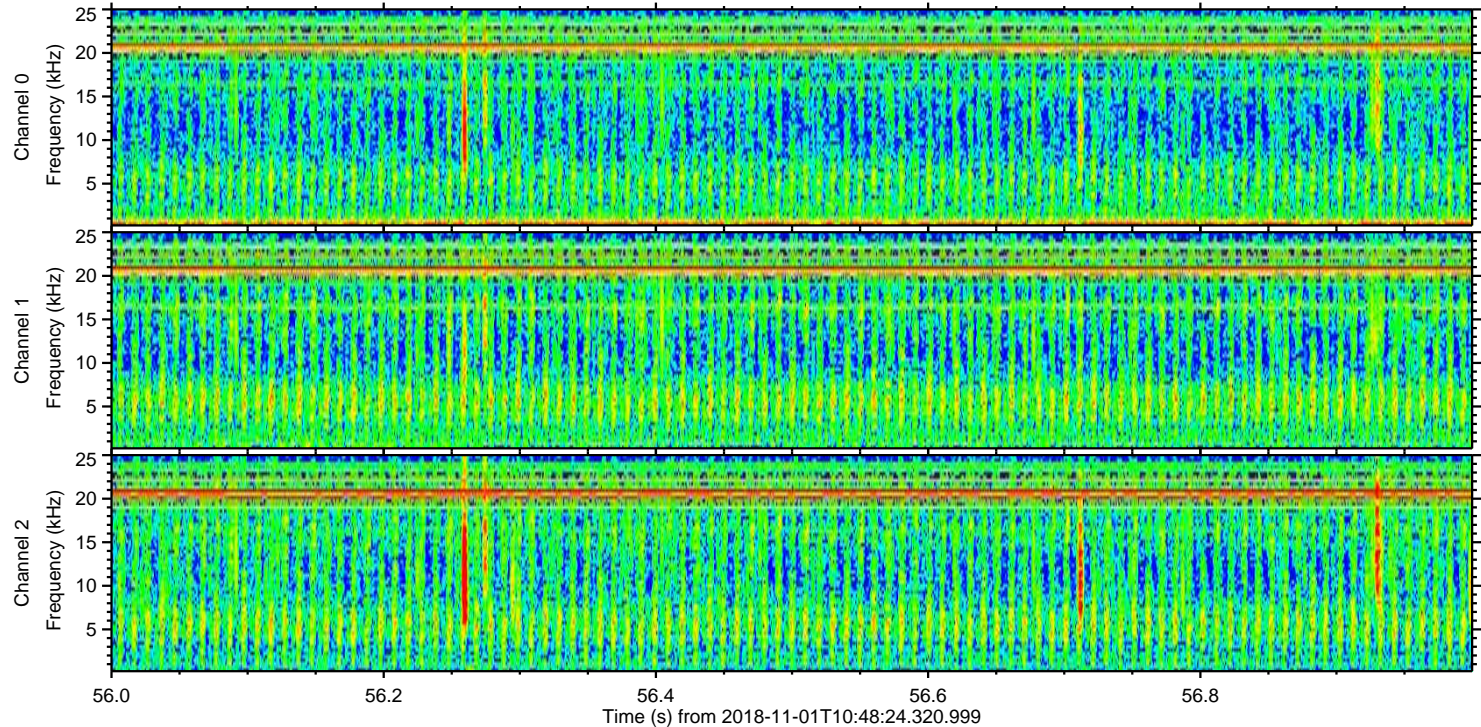
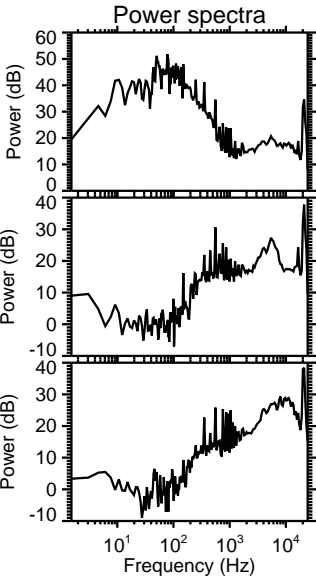
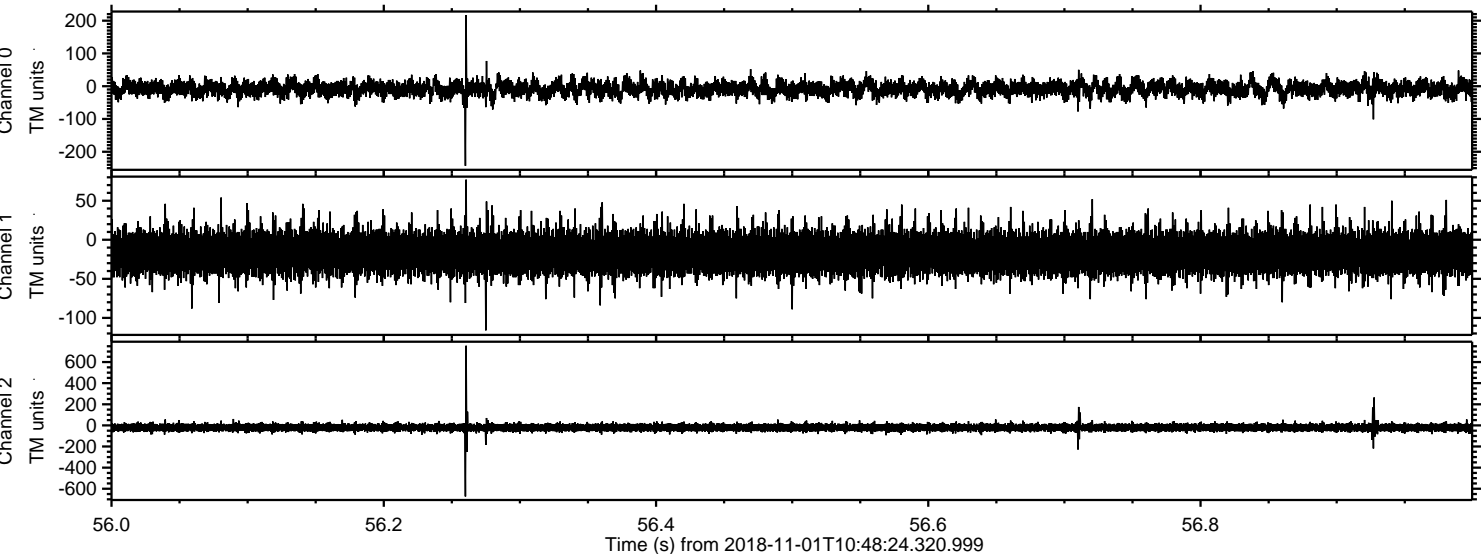
Processed Thu Nov 1 11:56:52 2018 by ELM ver.2012-10-06 from 001__elm20181101_104823__dat00.bin



Processed Thu Nov 1 11:56:53 2018 by ELM ver.2012-10-06 from 001__elm20181101_104823__dat00.bin

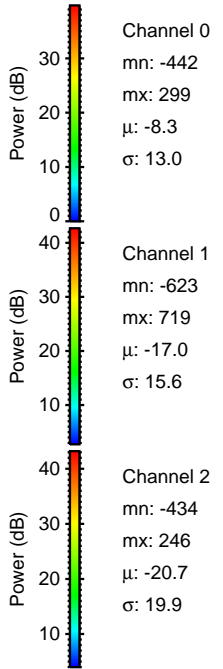
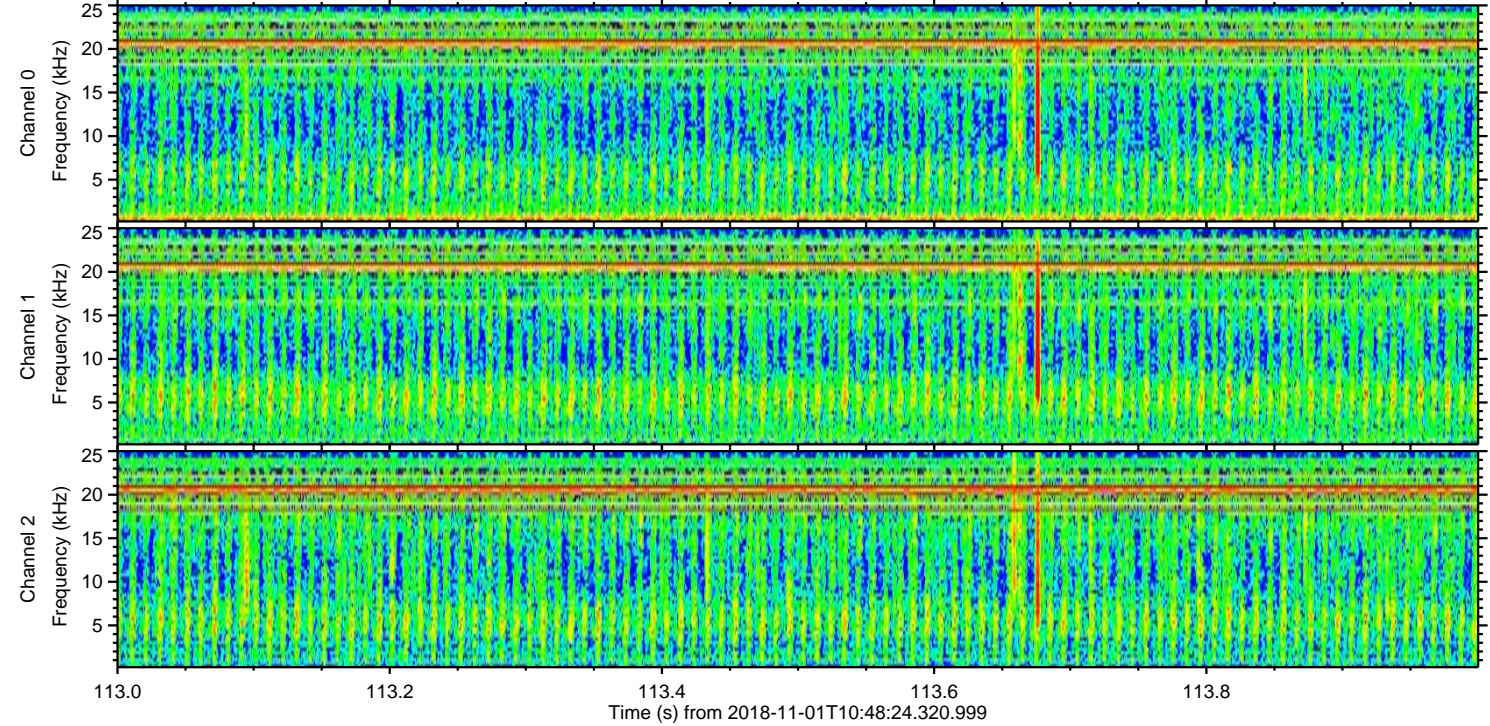
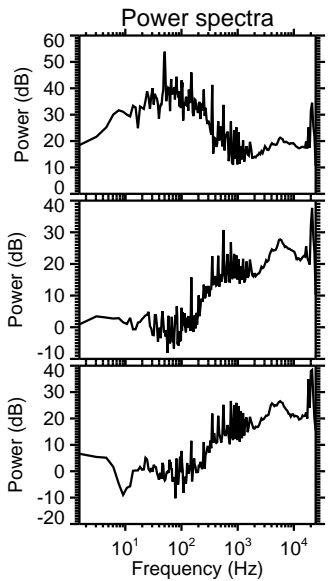
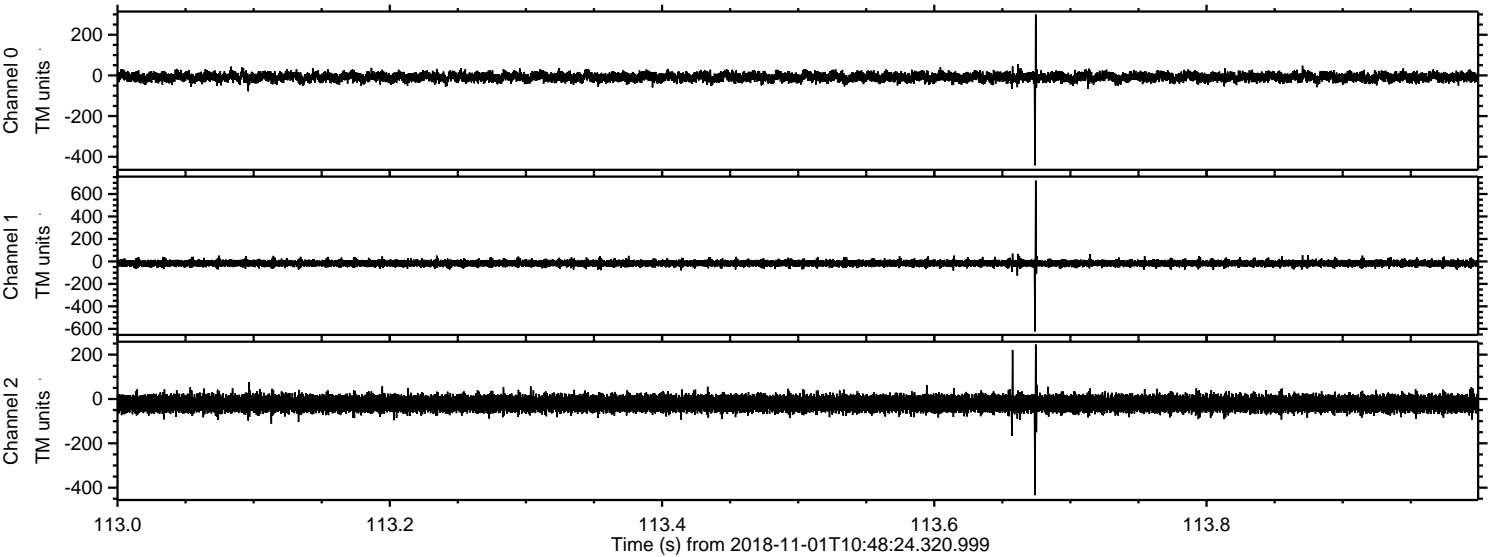


Processed Thu Nov 1 11:56:54 2018 by ELM ver.2012-10-06 from 001__elm20181101_104823__dat00.bin



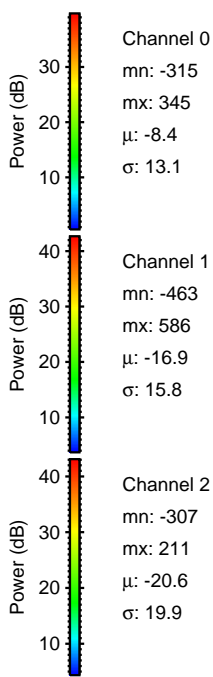
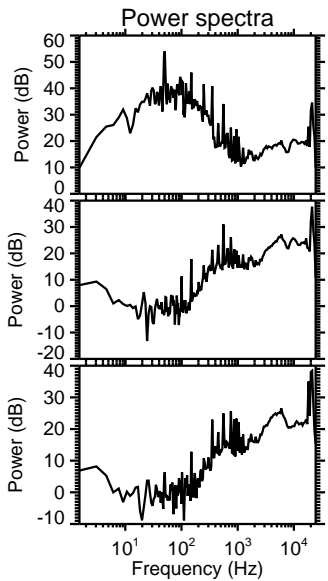
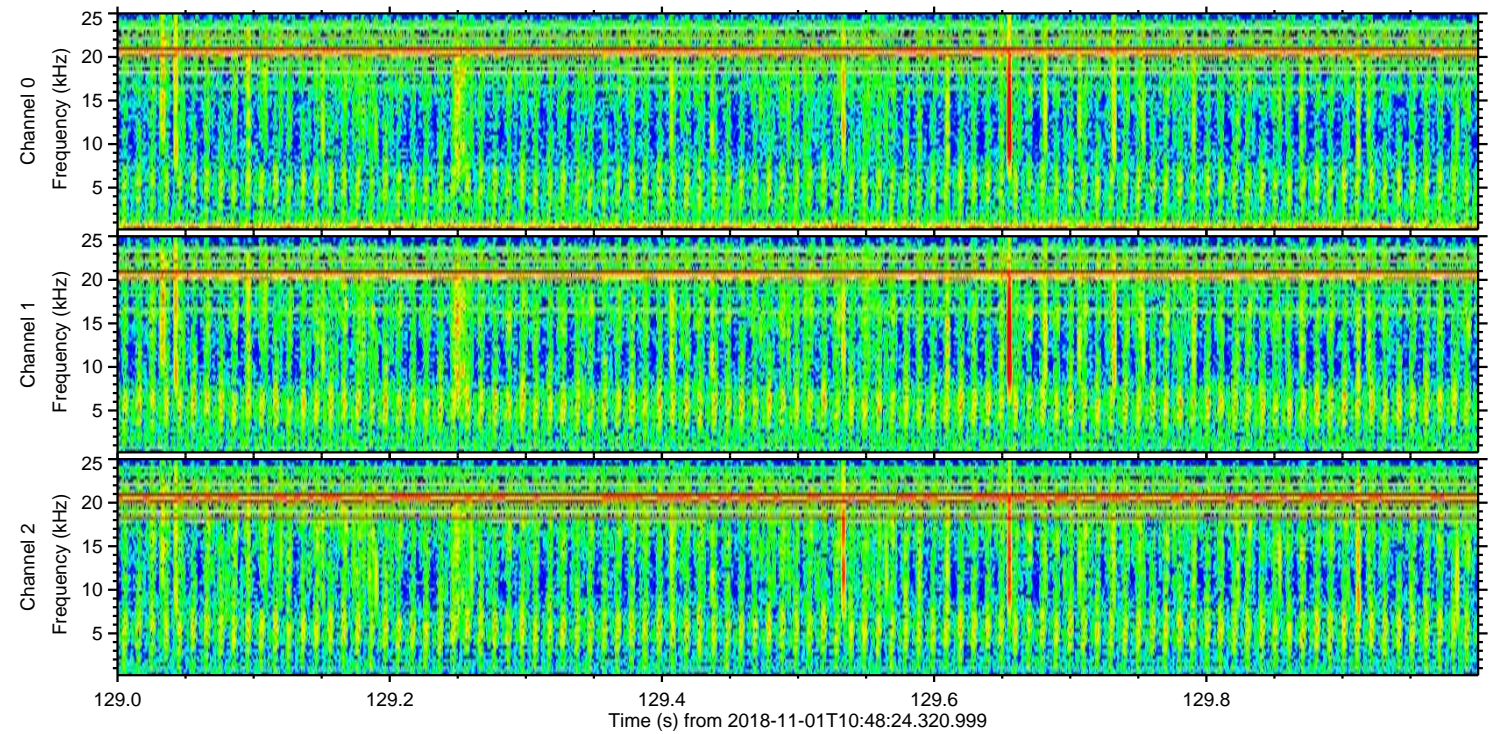
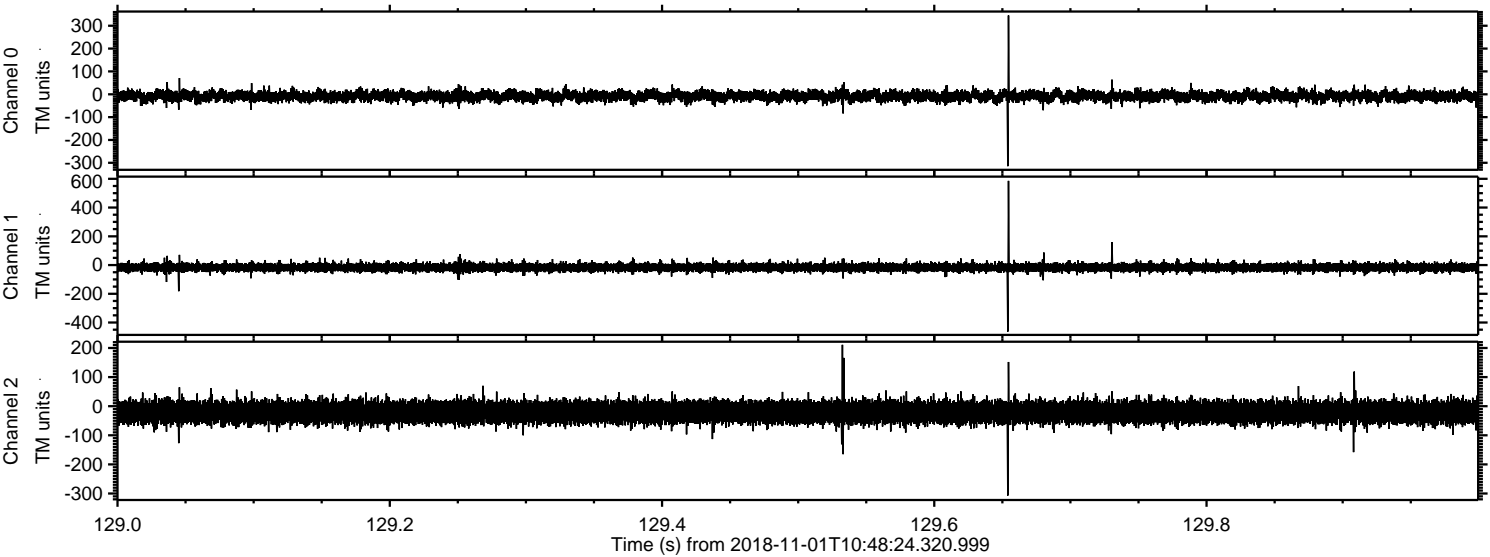
ELMAVAN 3D WAVEFORMS (Measured data sampled at 50 kHz) 51000 packets of 144 samples from 2018-11-01T10:48:24.320.999. Part 114/147

Processed Thu Nov 1 11:56:54 2018 by ELM ver.2012-10-06 from 001__elm20181101_104823__dat00.bin



ELMAVAN 3D WAVEFORMS (Measured data sampled at 50 kHz) 51000 packets of 144 samples from 2018-11-01T10:48:24.320.999. Part 130/147

Processed Thu Nov 1 11:56:55 2018 by ELM ver.2012-10-06 from 001__elm20181101_104823__dat00.bin



Channel 0
mn: -315
mx: 345
 μ : -8.4
 σ : 13.1

Channel 1
mn: -463
mx: 586
 μ : -16.9
 σ : 15.8

Channel 2
mn: -307
mx: 211
 μ : -20.6
 σ : 19.9

