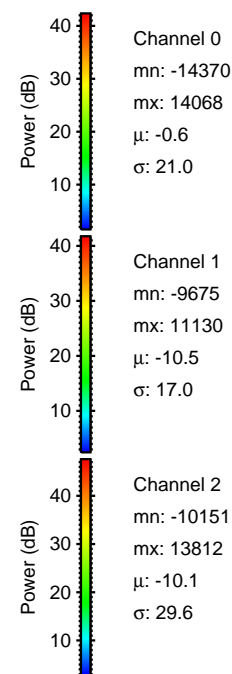
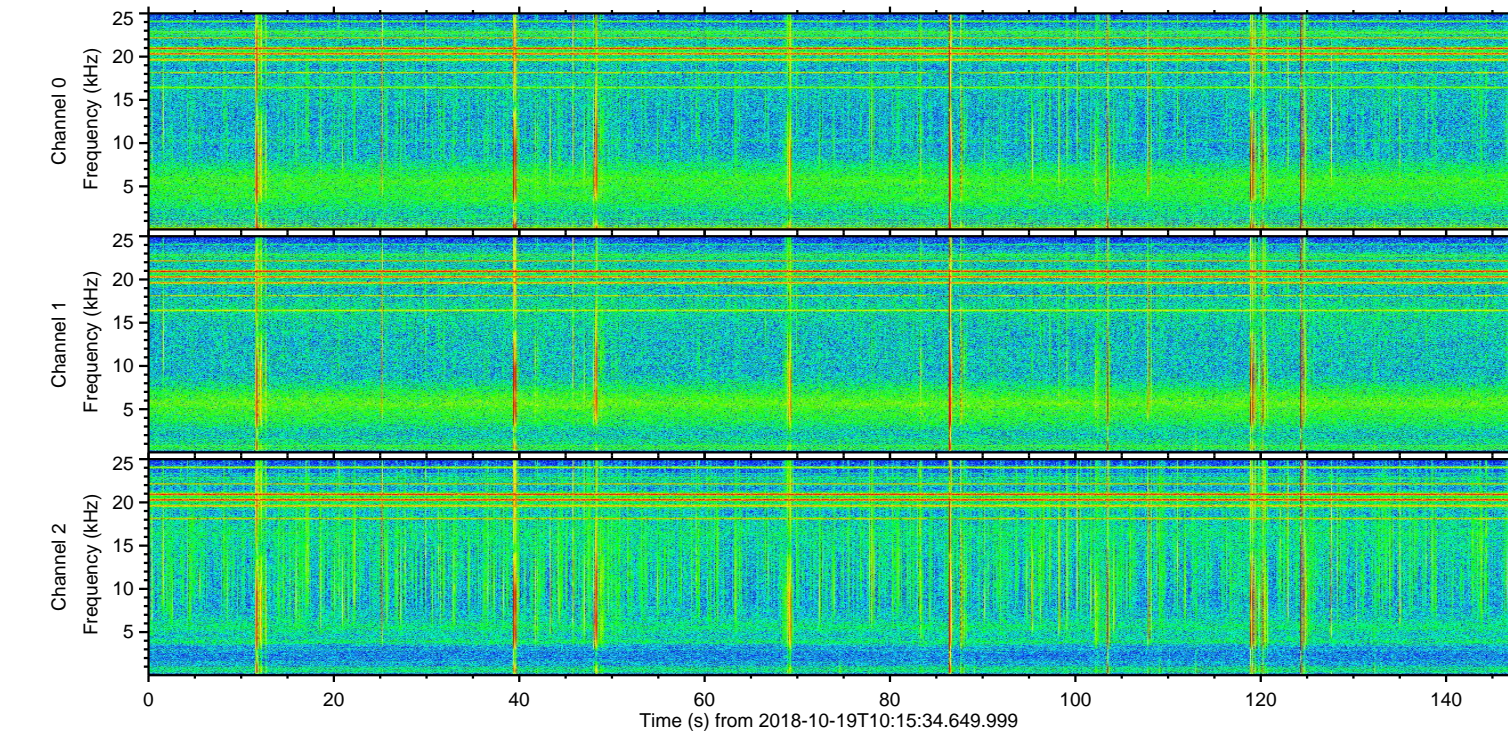
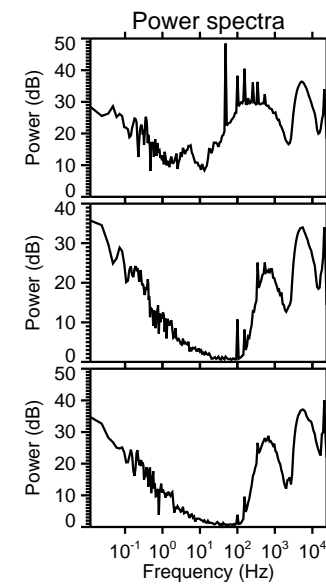
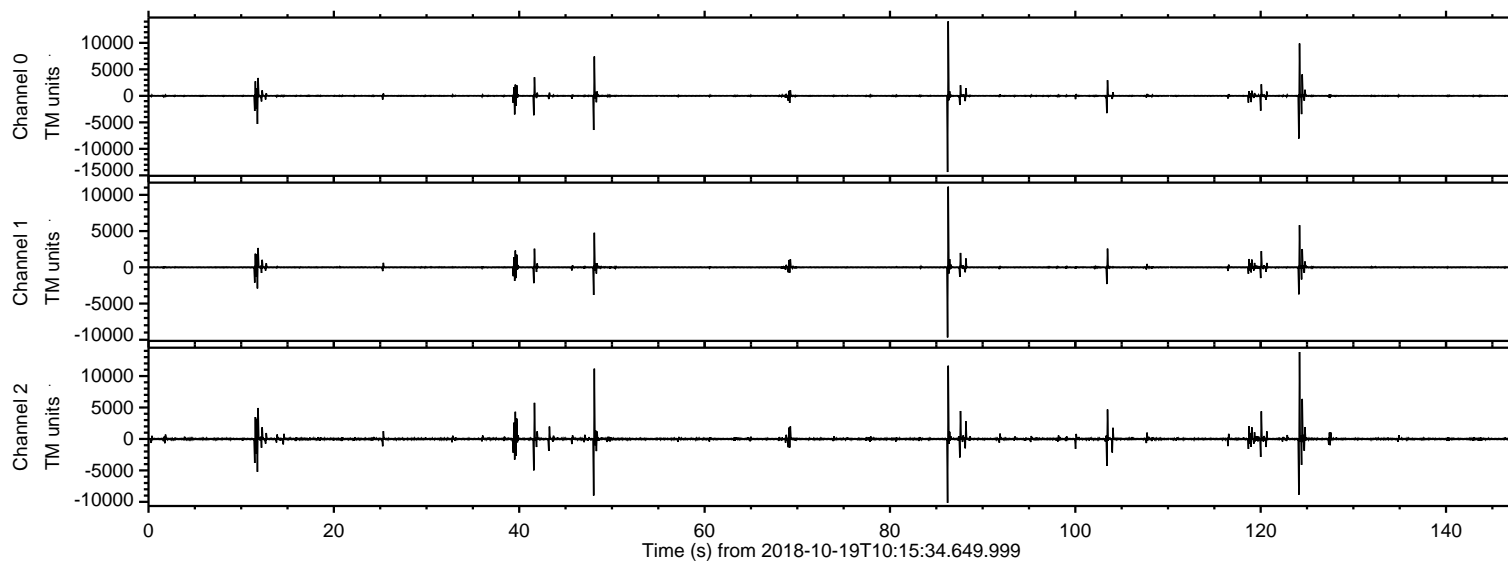
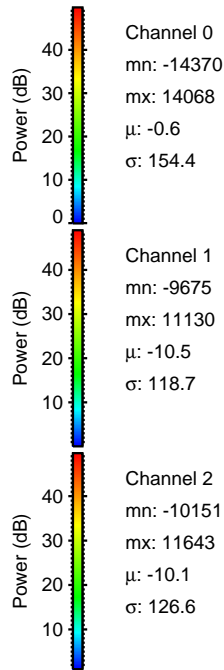
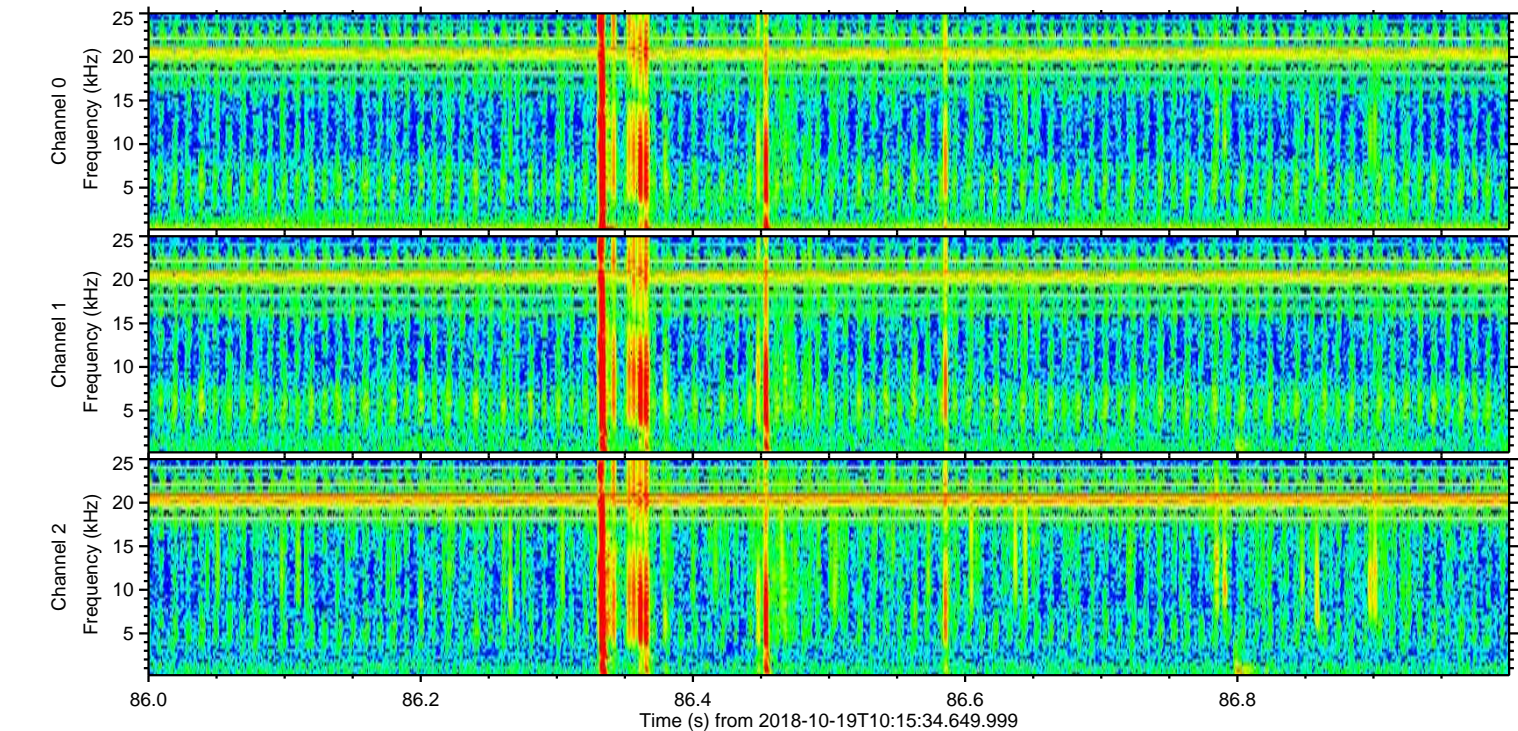
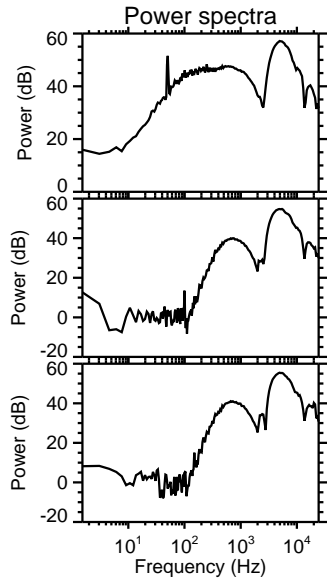
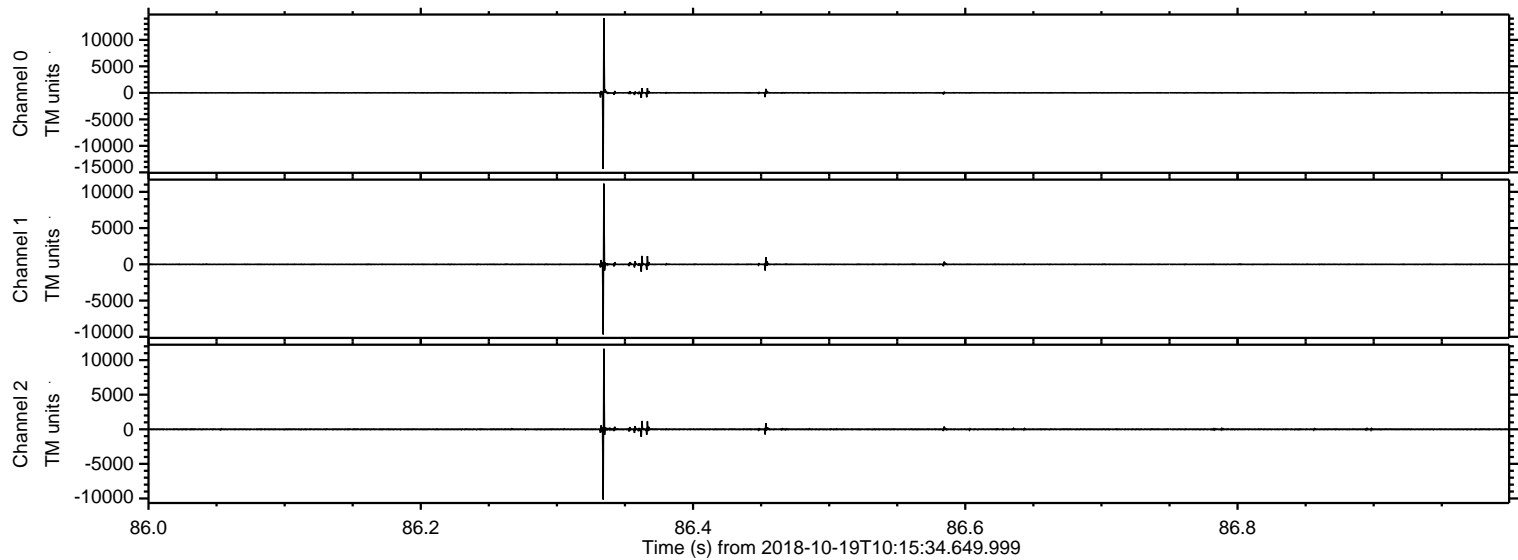


ELMAVAN 3D WAVEFORMS (Measured data sampled at 50 kHz) 51000 packets of 144 samples from 2018-10-19T10:15:34.649.999.

Processed Fri Oct 19 12:24:02 2018 by ELM ver.2012-10-06 from 001__elm20181019_101533__dat00.bin

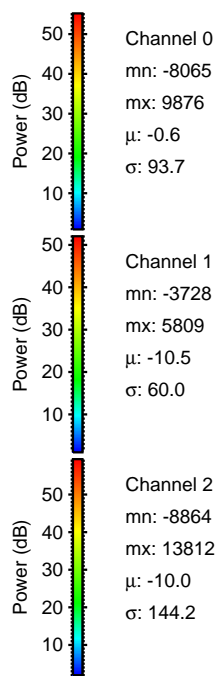
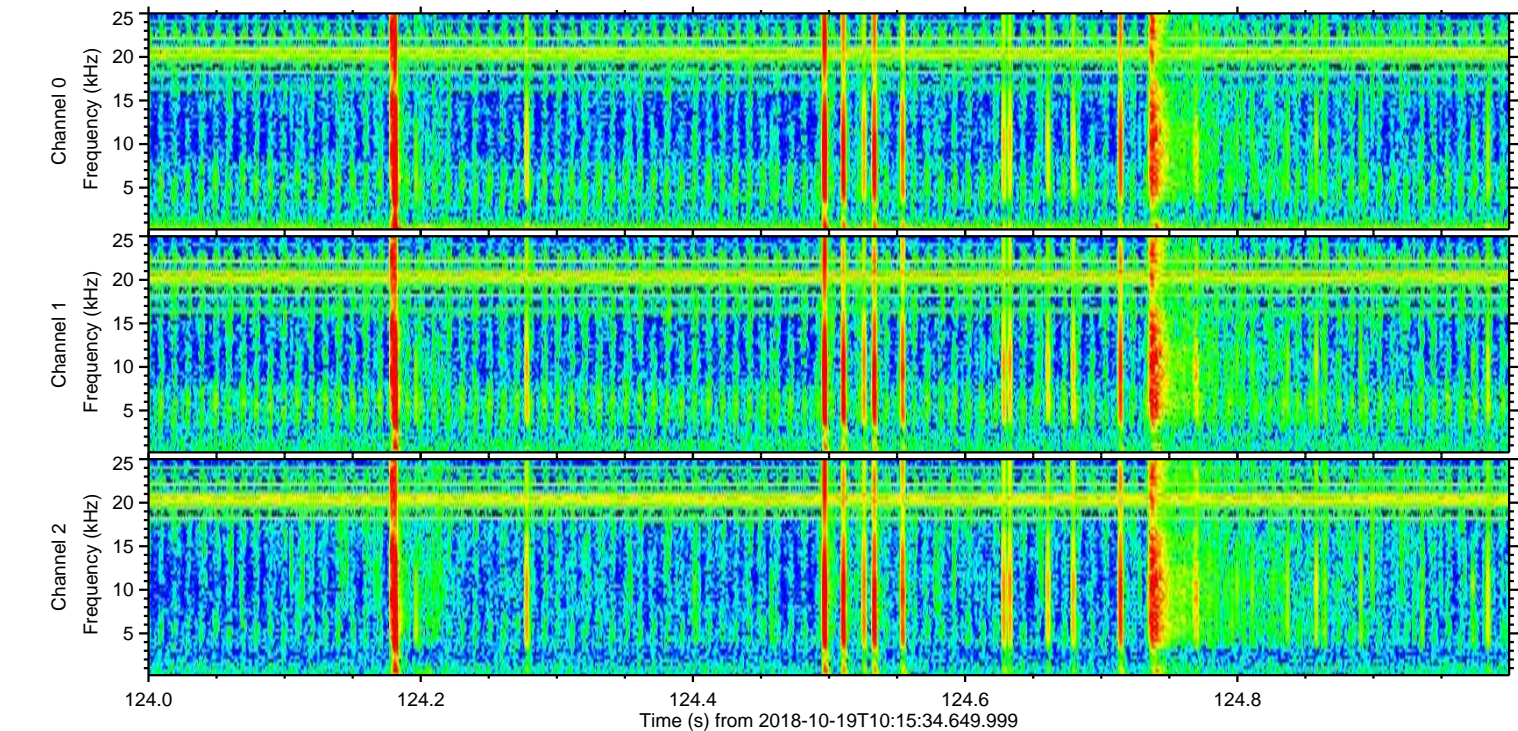
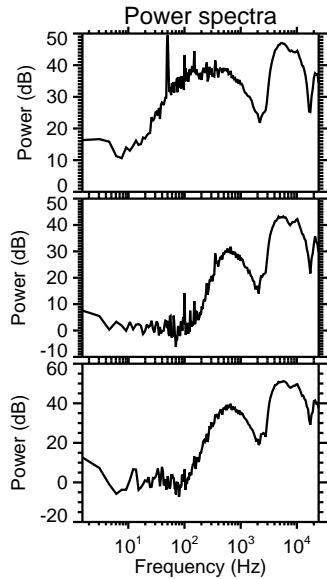
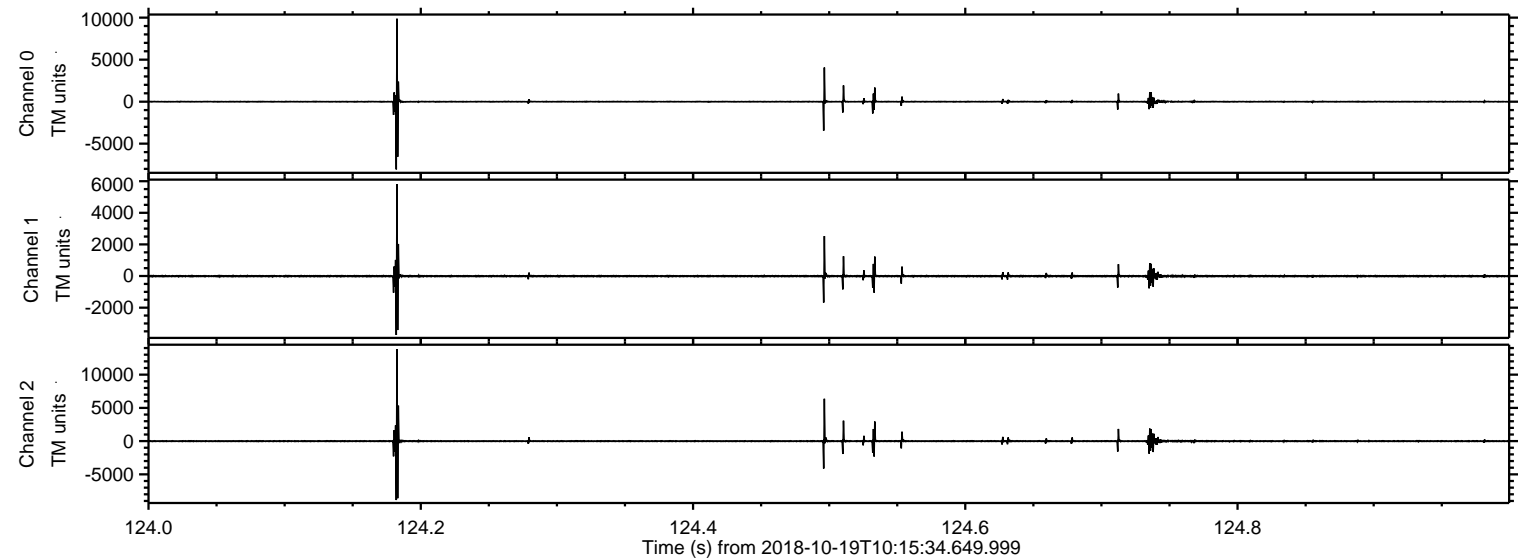


Processed Fri Oct 19 12:24:09 2018 by ELM ver.2012-10-06 from 001__elm20181019_101533__dat00.bin

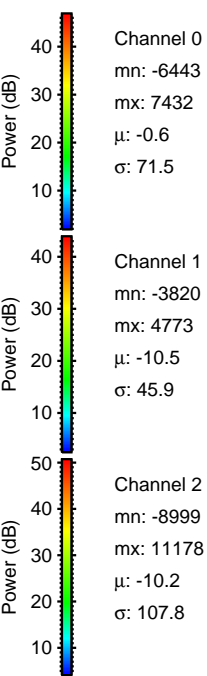
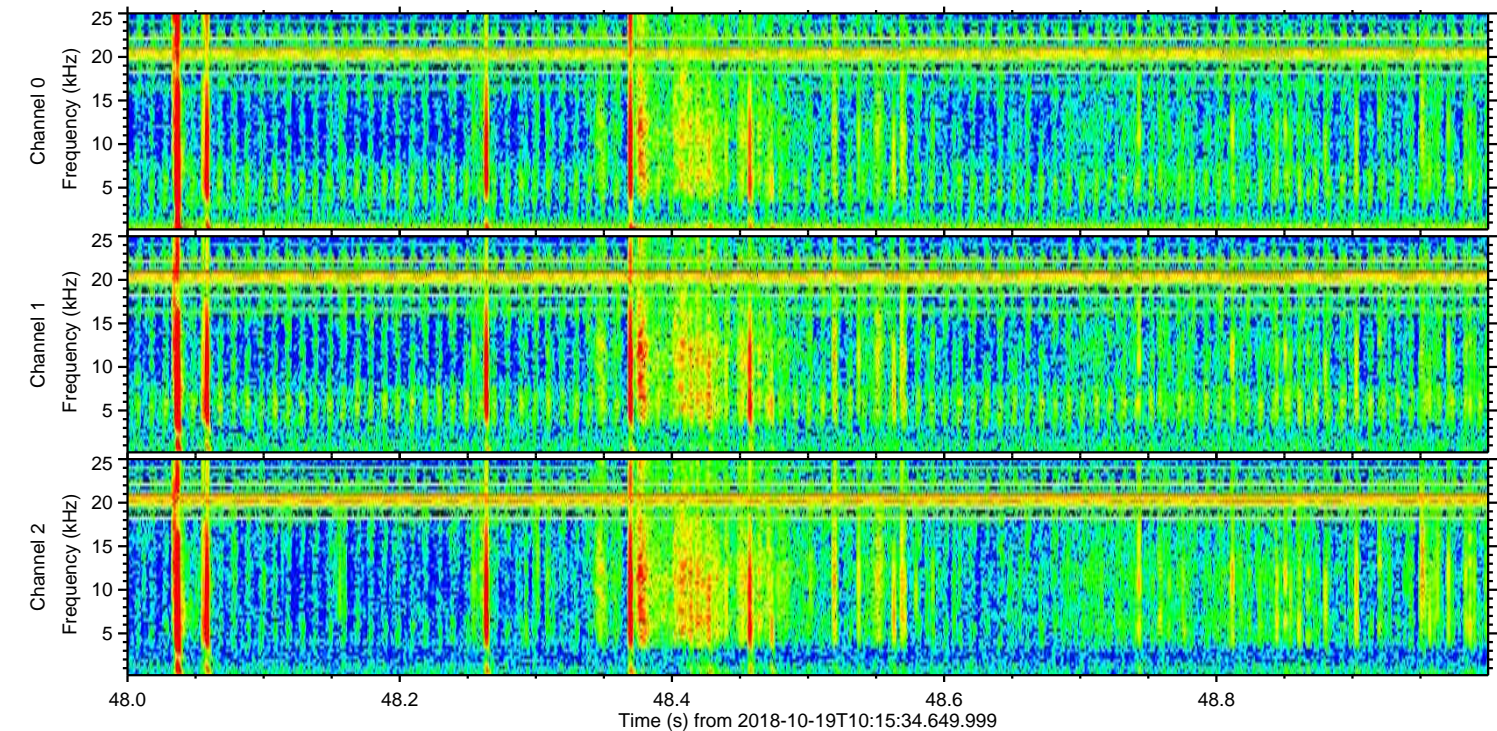
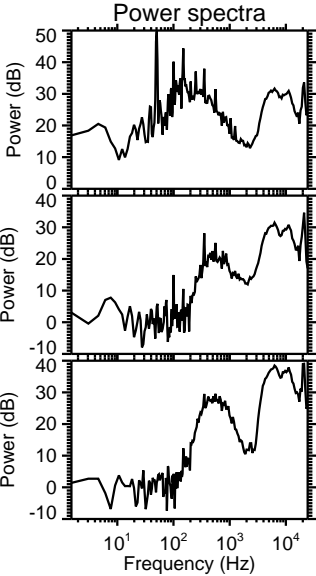
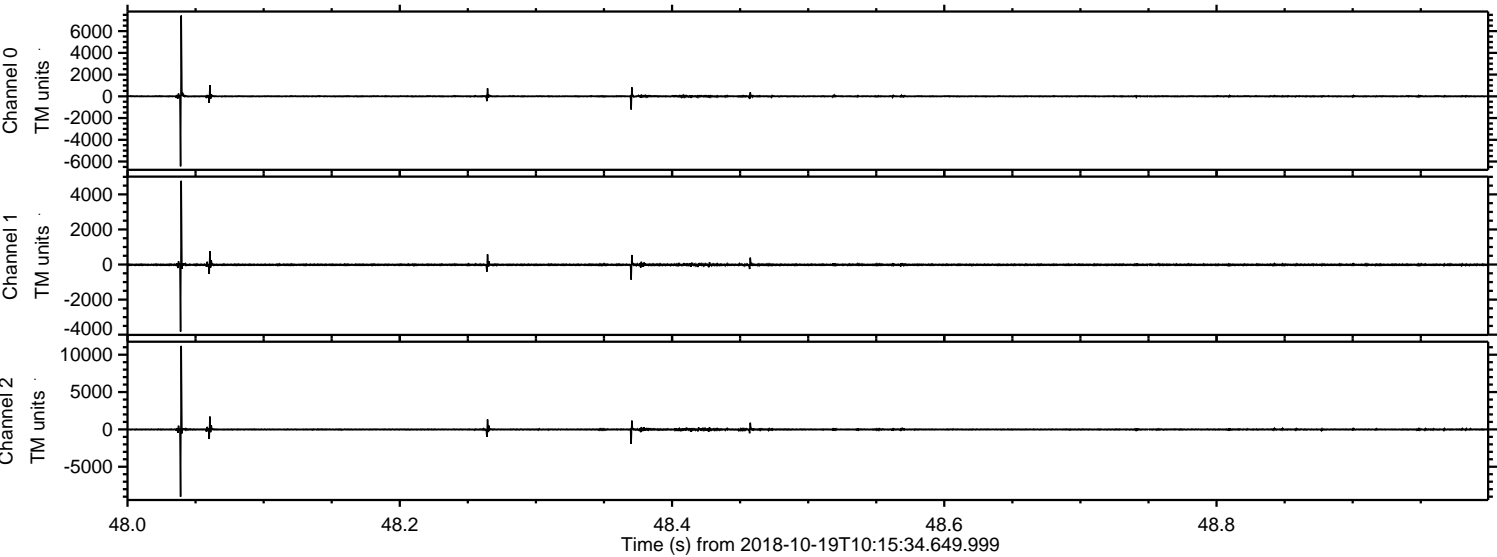


ELMAVAN 3D WAVEFORMS (Measured data sampled at 50 kHz) 51000 packets of 144 samples from 2018-10-19T10:15:34.649.999. Part 125/147

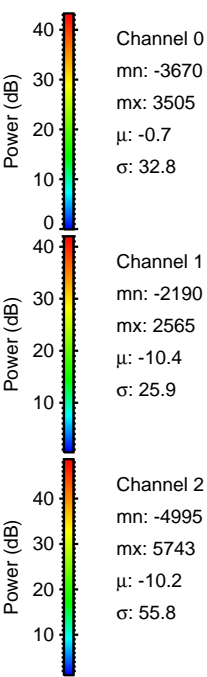
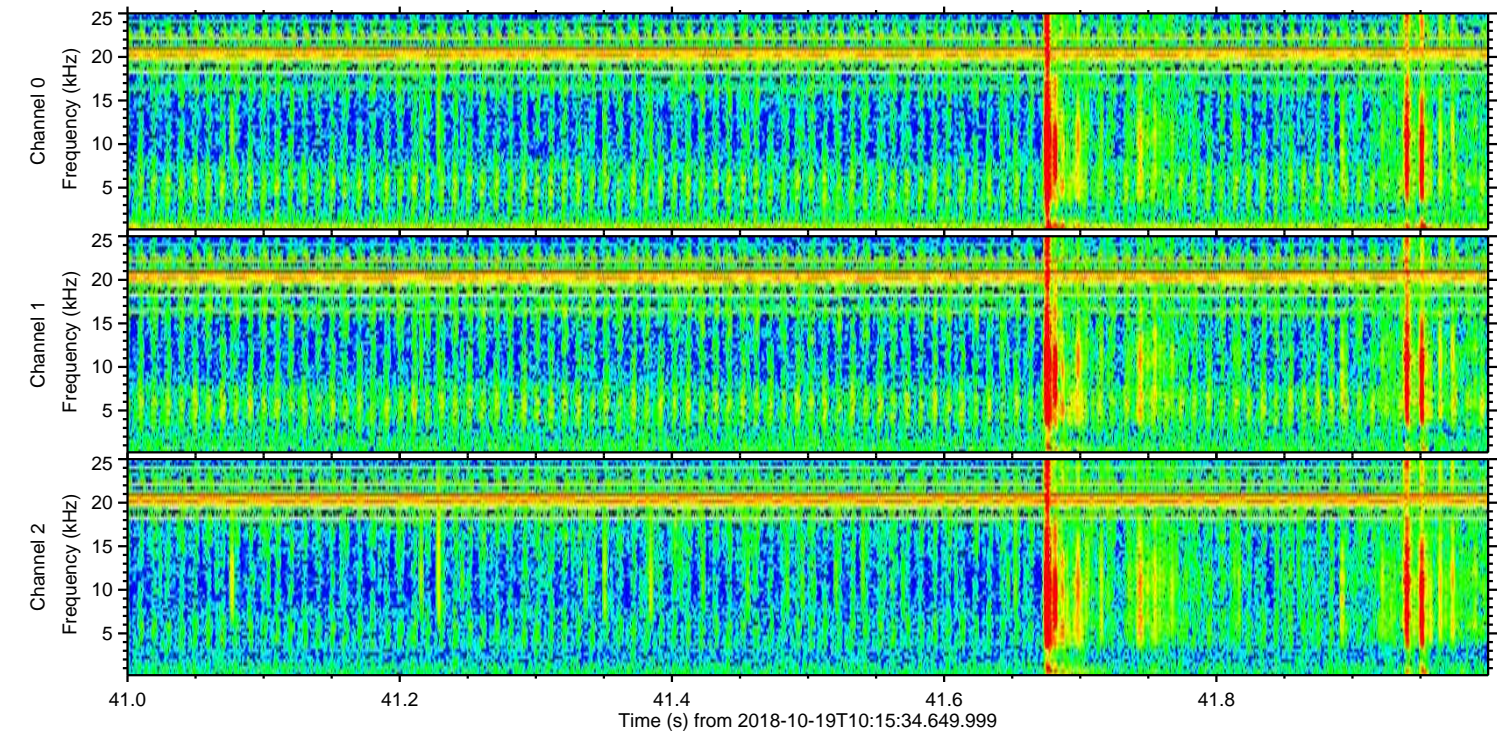
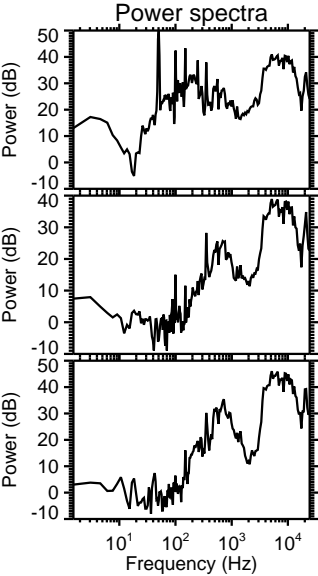
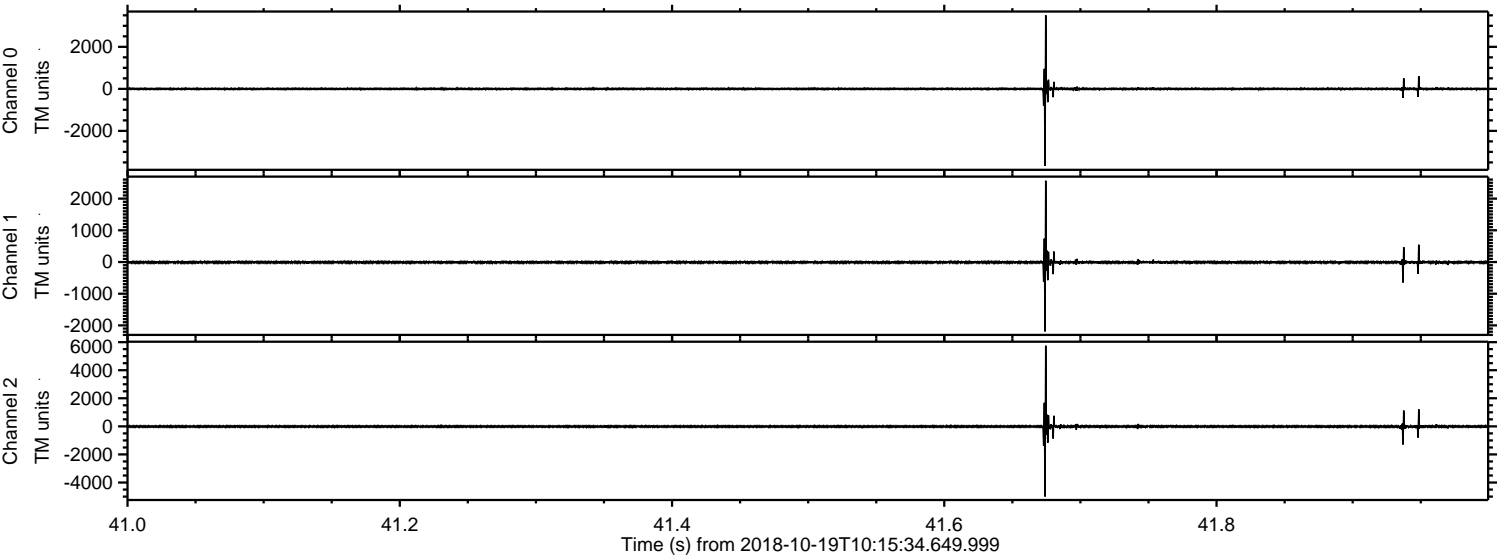
Processed Fri Oct 19 12:24:10 2018 by ELM ver.2012-10-06 from 001__elm20181019_101533__dat00.bin



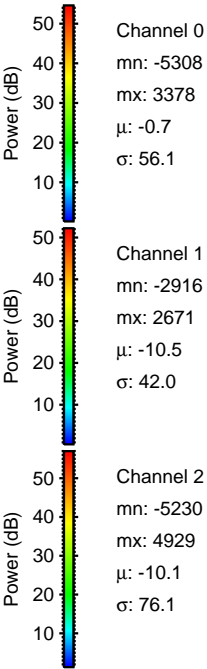
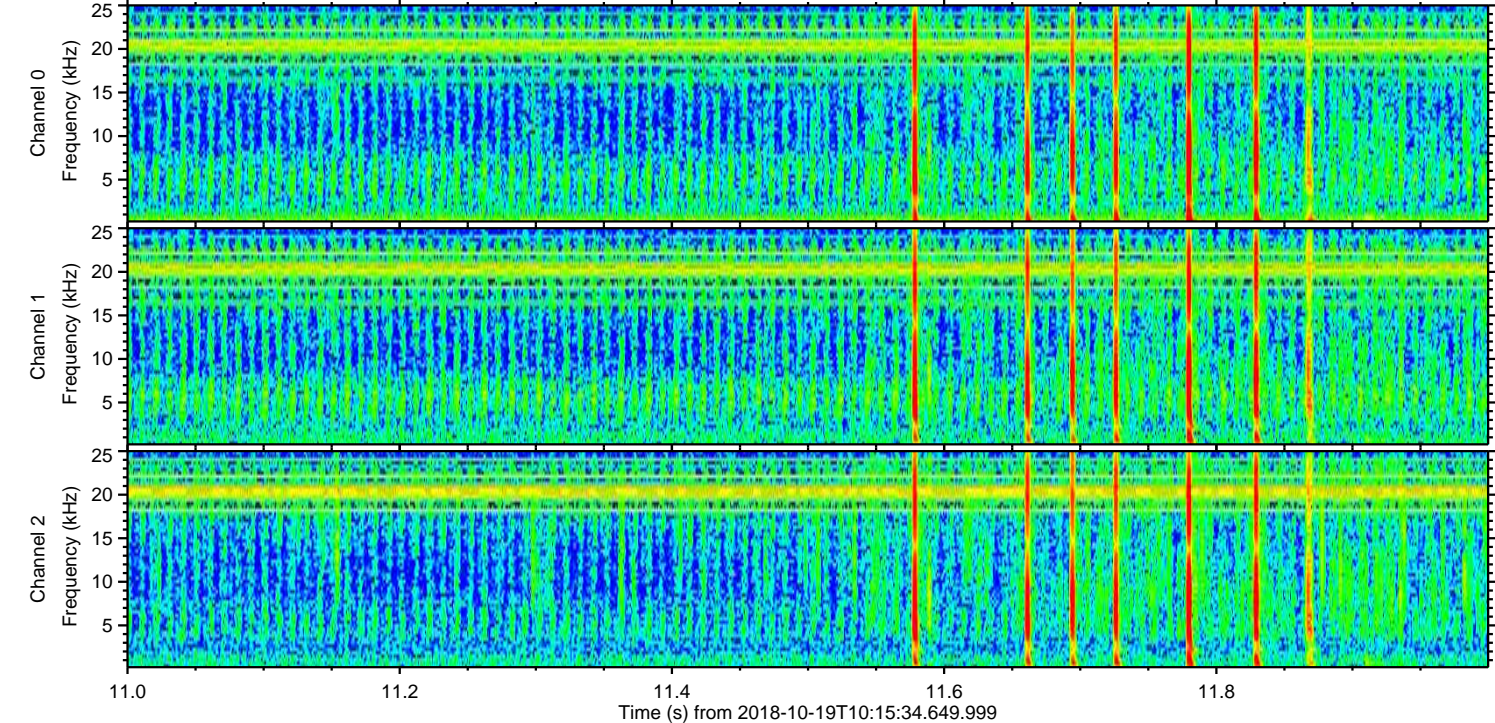
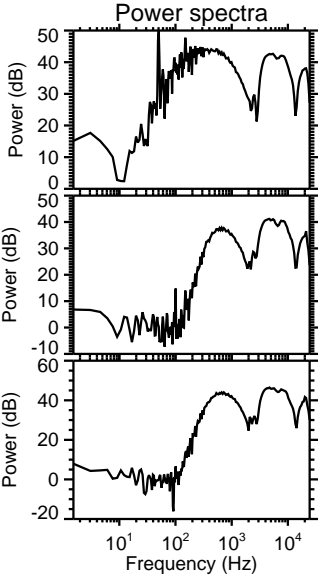
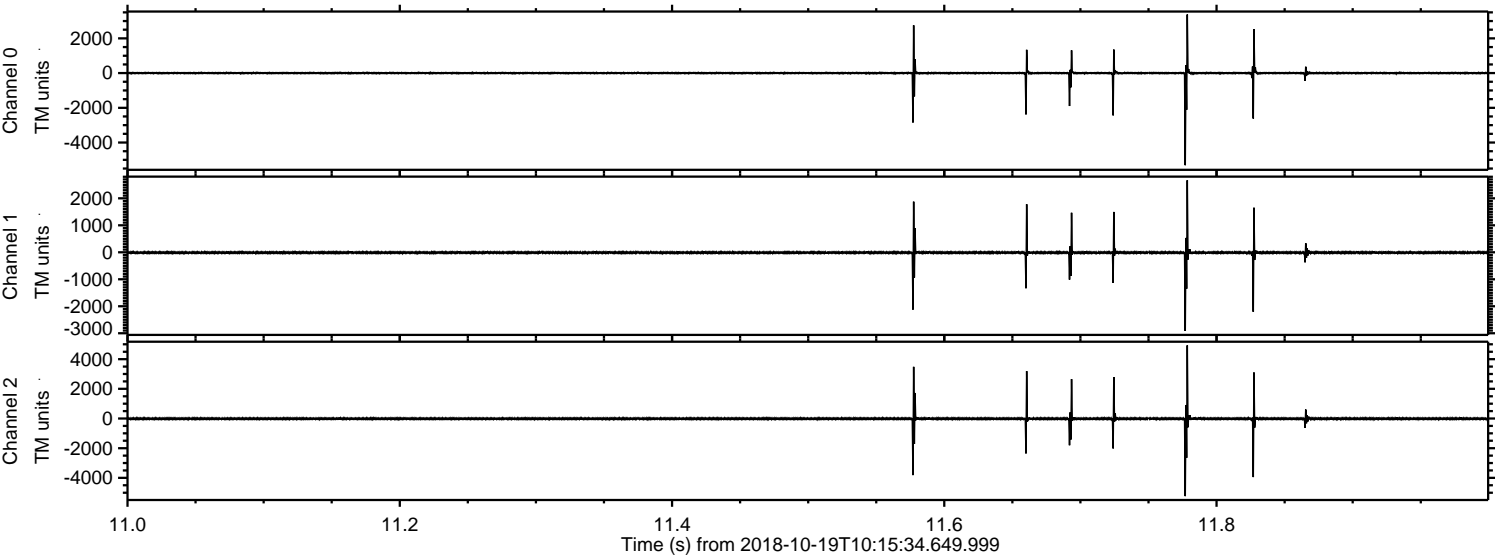
Processed Fri Oct 19 12:24:10 2018 by ELM ver.2012-10-06 from 001__elm20181019_101533__dat00.bin



Processed Fri Oct 19 12:24:11 2018 by ELM ver.2012-10-06 from 001__elm20181019_101533__dat00.bin

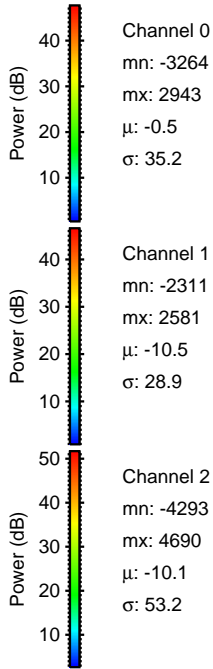
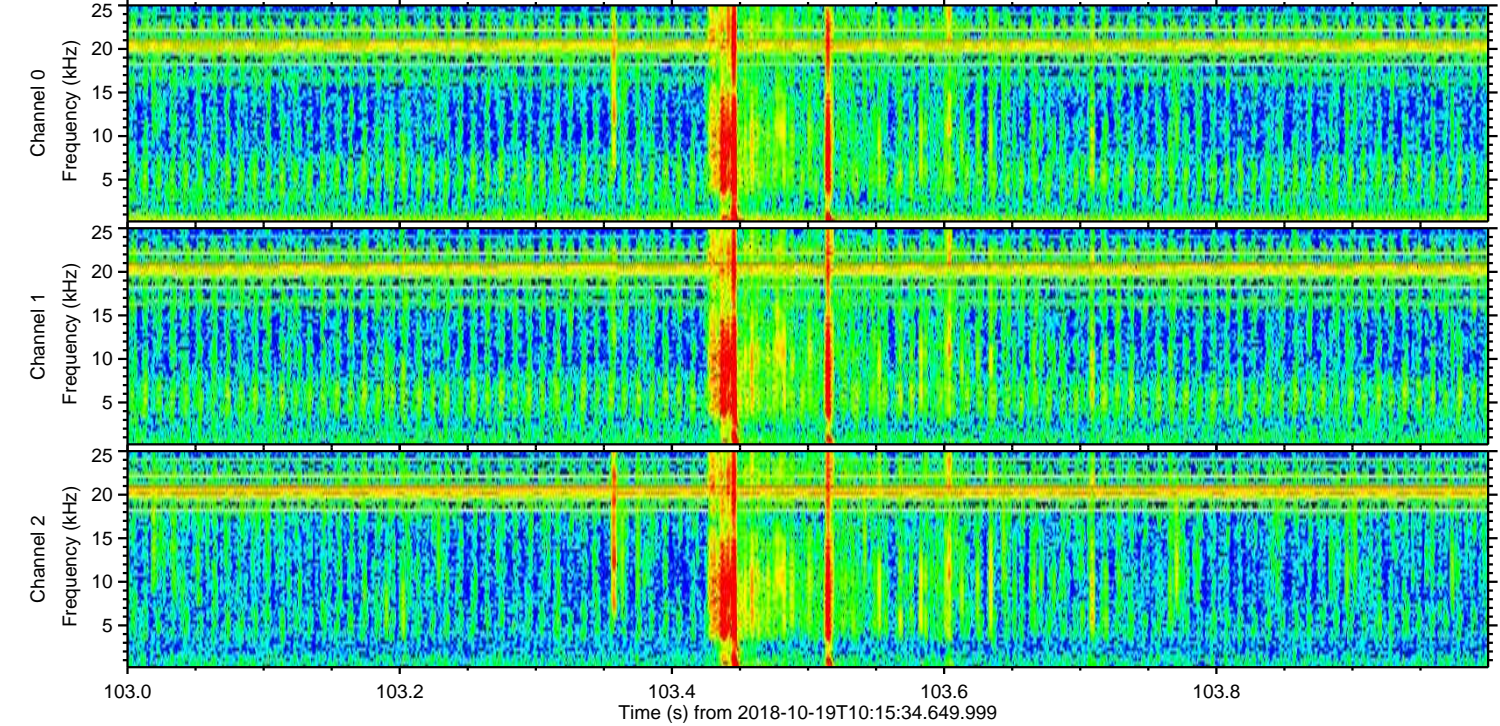
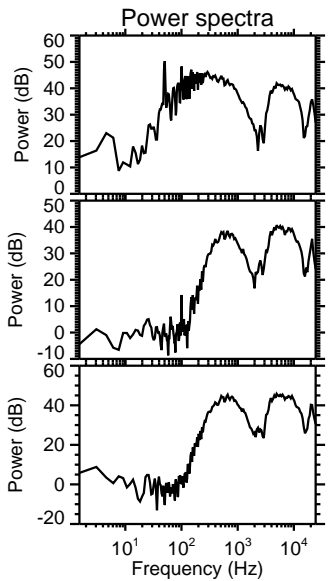
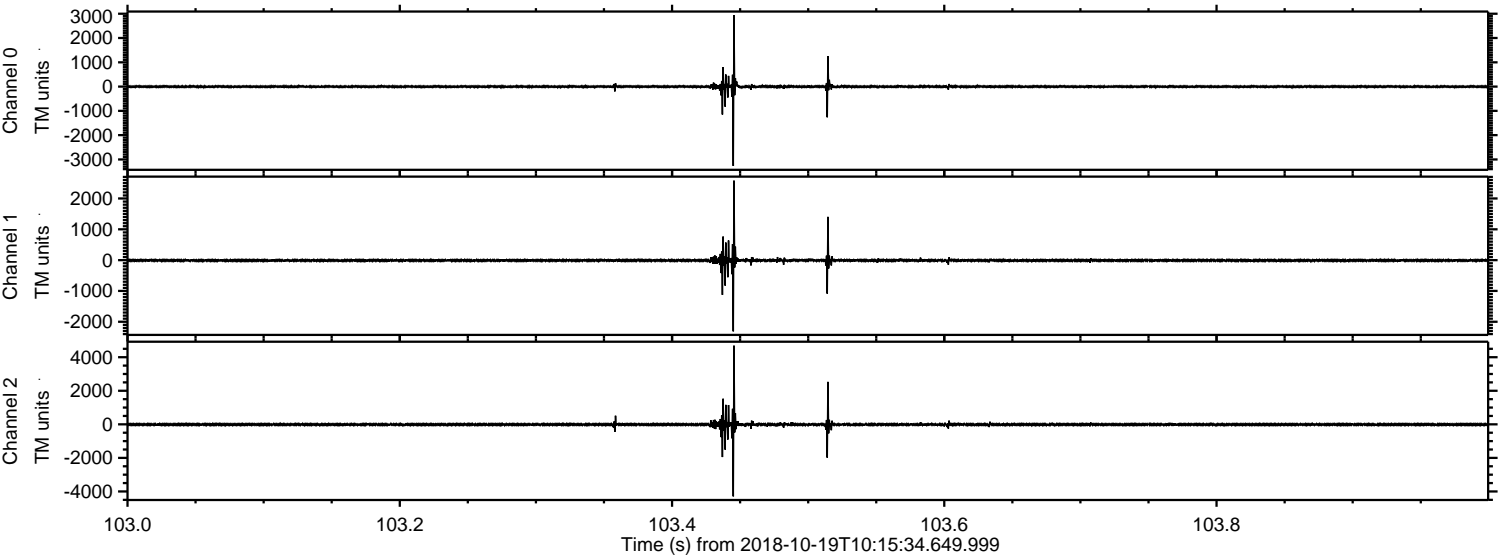


Processed Fri Oct 19 12:24:12 2018 by ELM ver.2012-10-06 from 001__elm20181019_101533__dat00.bin

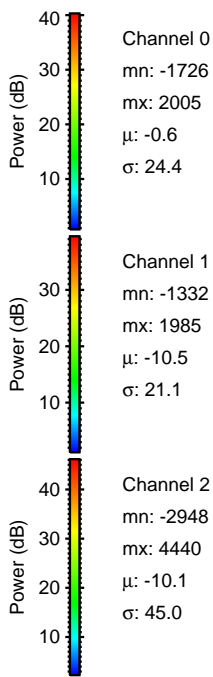
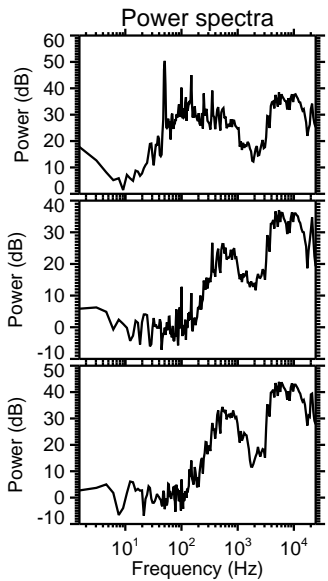
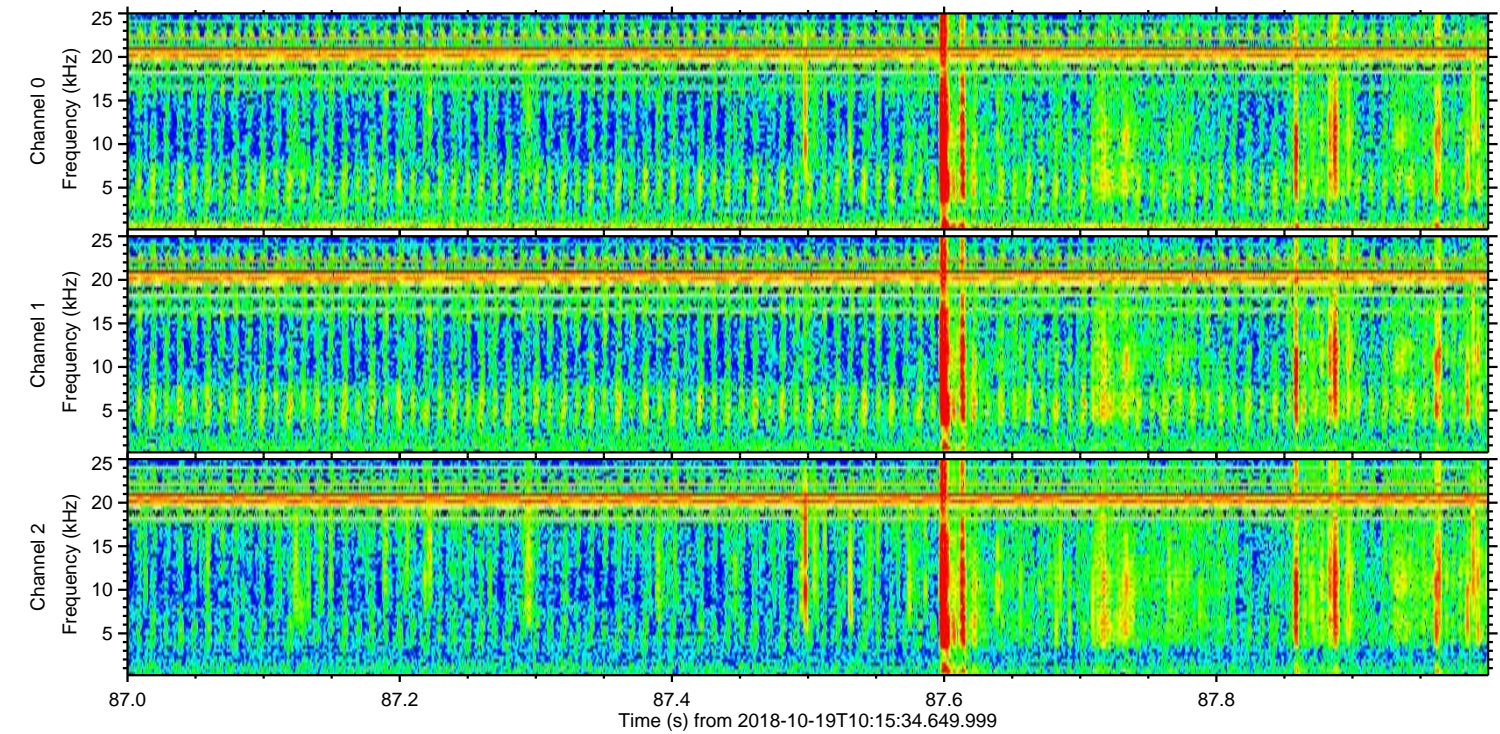
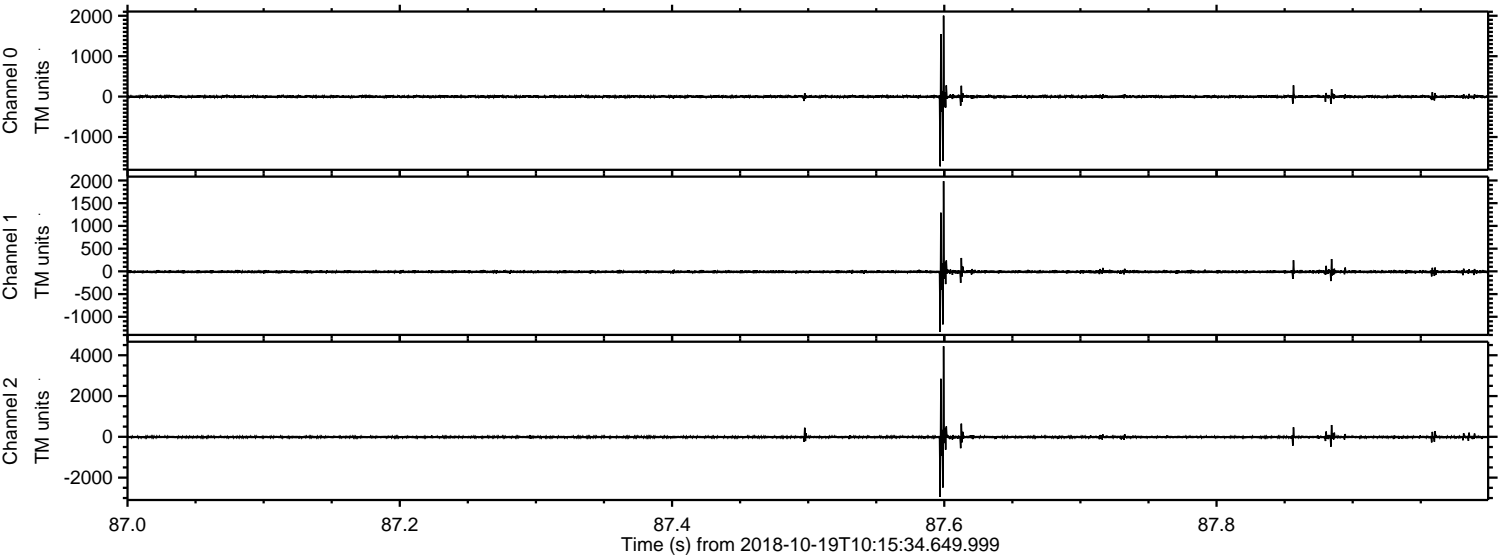


ELMAVAN 3D WAVEFORMS (Measured data sampled at 50 kHz) 51000 packets of 144 samples from 2018-10-19T10:15:34.649.999. Part 104/147

Processed Fri Oct 19 12:24:13 2018 by ELM ver.2012-10-06 from 001__elm20181019_101533__dat00.bin

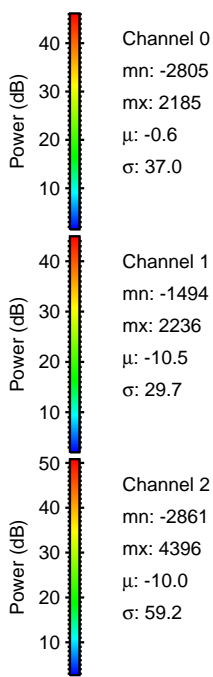
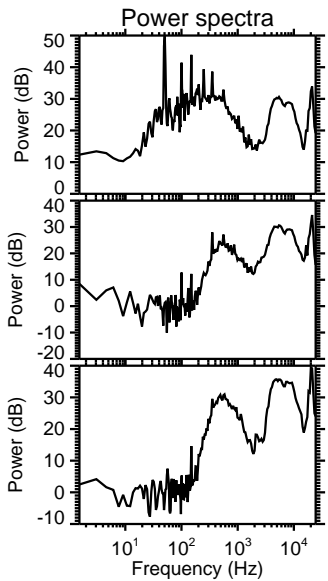
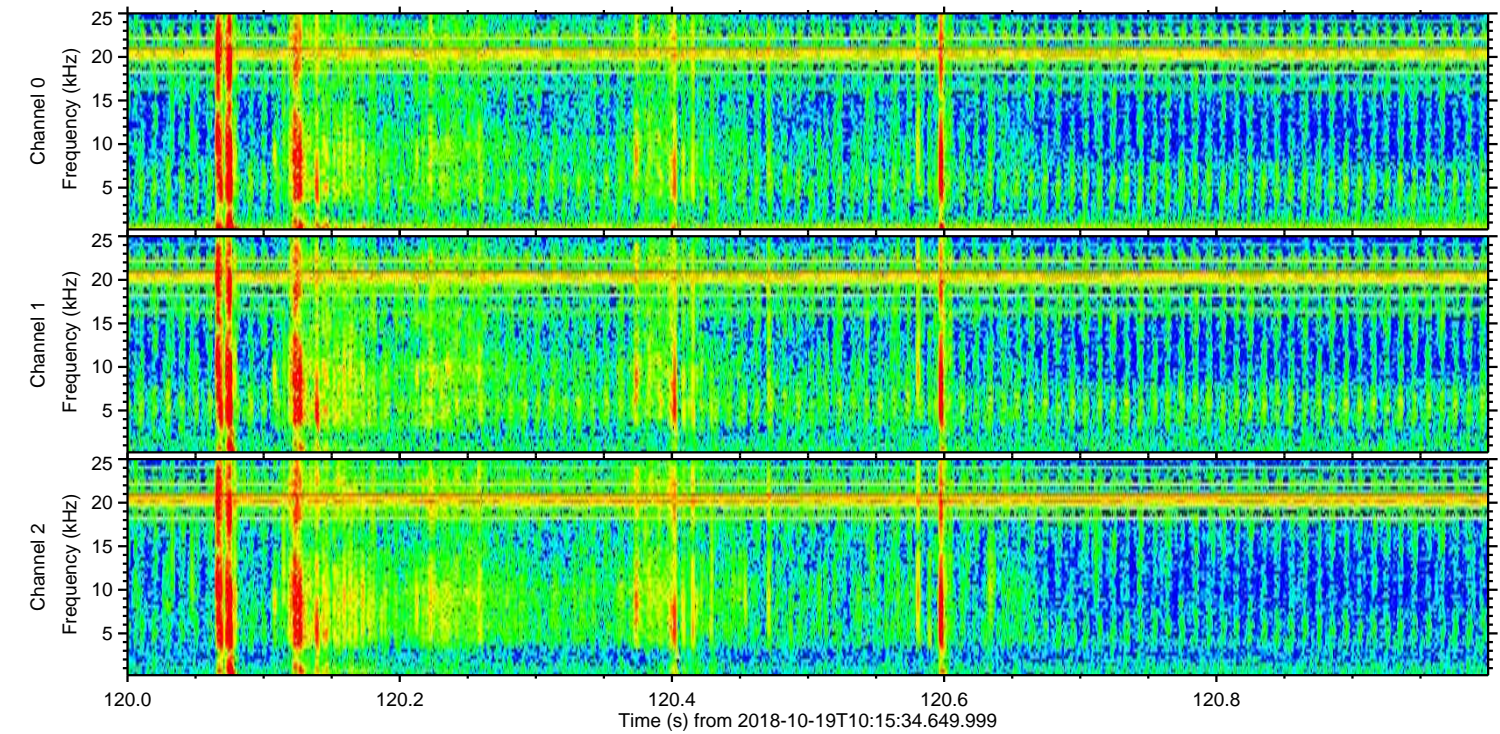
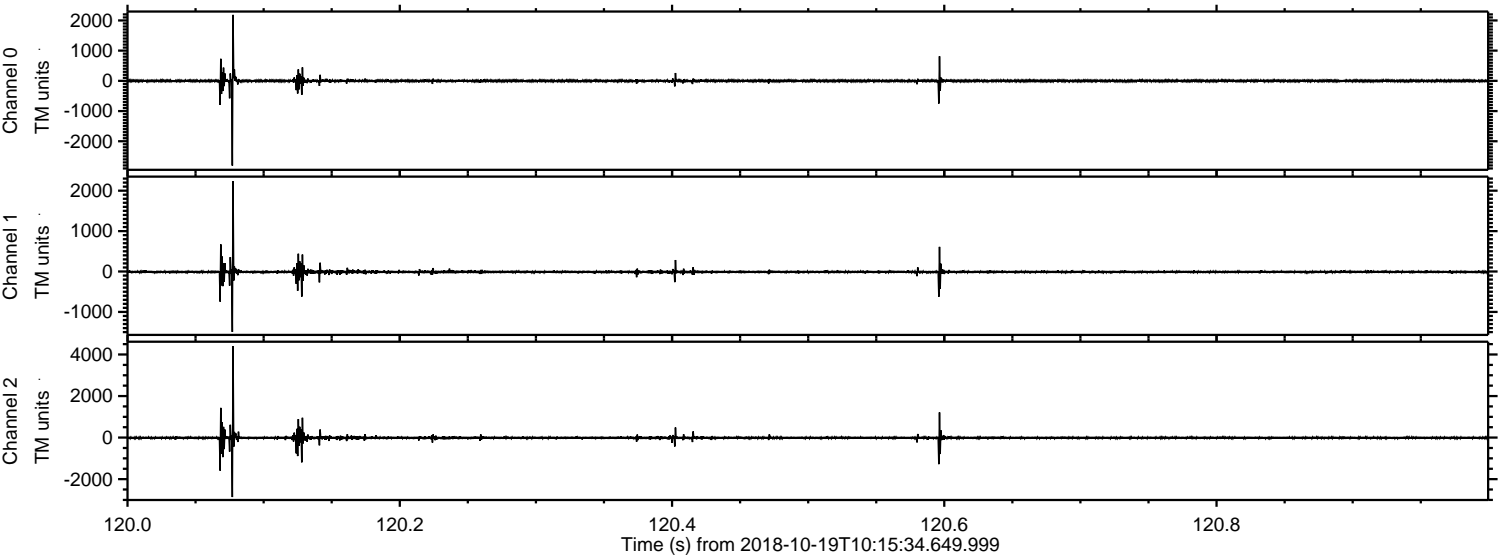


Processed Fri Oct 19 12:24:14 2018 by ELM ver.2012-10-06 from 001__elm20181019_101533__dat00.bin



ELMAVAN 3D WAVEFORMS (Measured data sampled at 50 kHz) 51000 packets of 144 samples from 2018-10-19T10:15:34.649.999. Part 121/147

Processed Fri Oct 19 12:24:14 2018 by ELM ver.2012-10-06 from 001__elm20181019_101533__dat00.bin



Channel 0
mn: -2805
mx: 2185
 μ : -0.6
 σ : 37.0

Channel 1
mn: -1494
mx: 2236
 μ : -10.5
 σ : 29.7

Channel 2
mn: -2861
mx: 4396
 μ : -10.0
 σ : 59.2

Processed Fri Oct 19 12:24:15 2018 by ELM ver.2012-10-06 from 001__elm20181019_101533__dat00.bin

