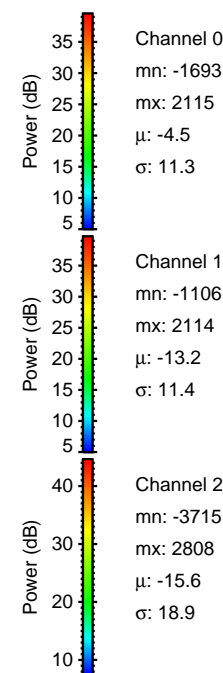
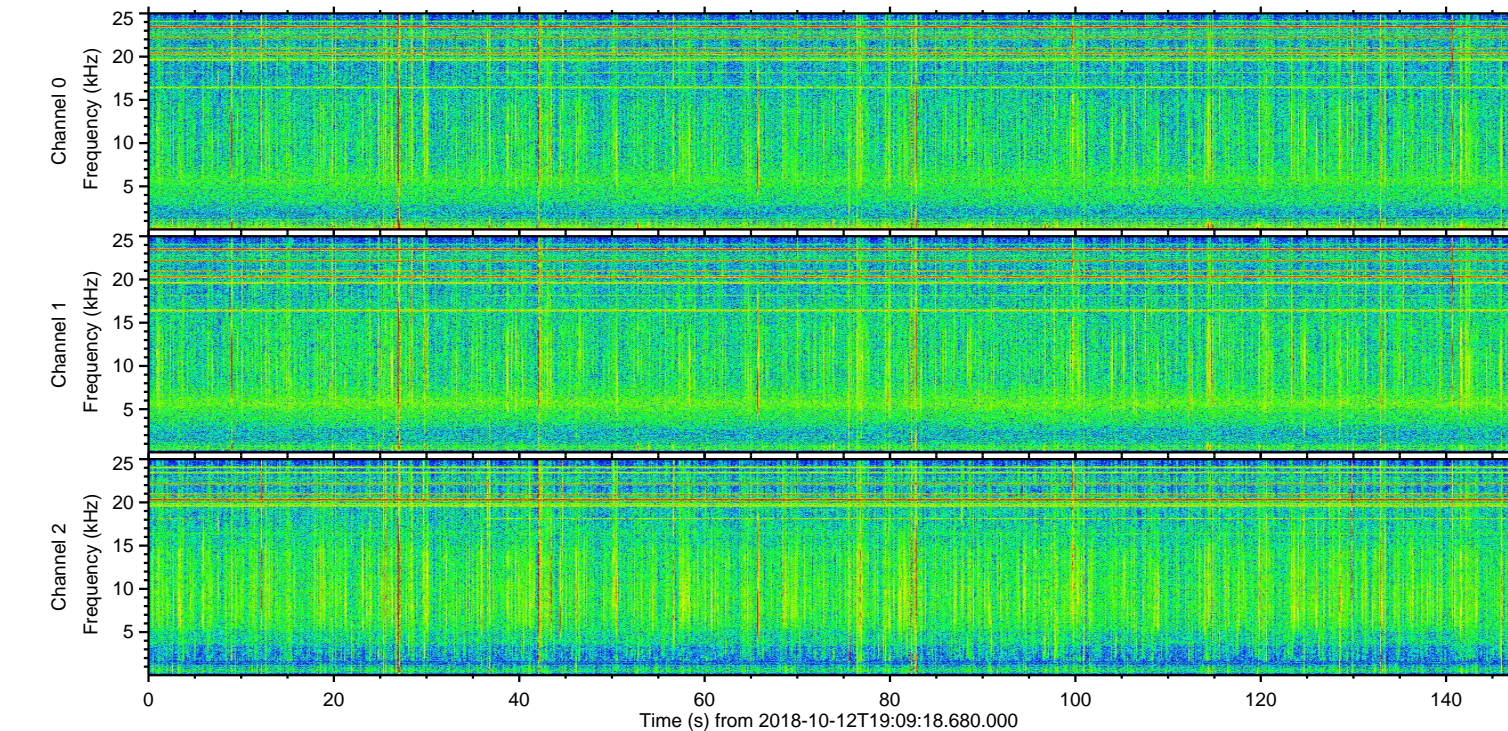
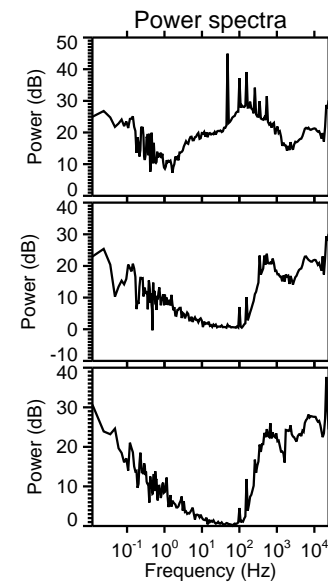
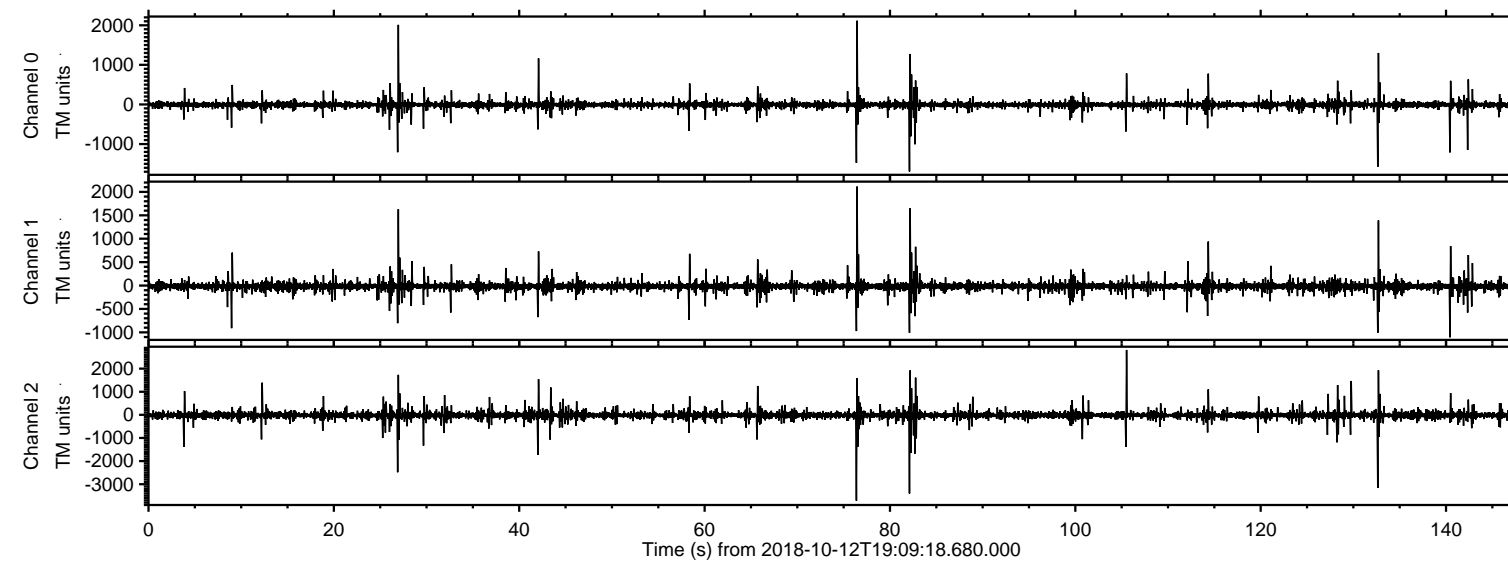
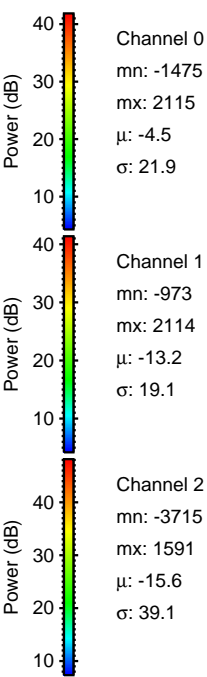
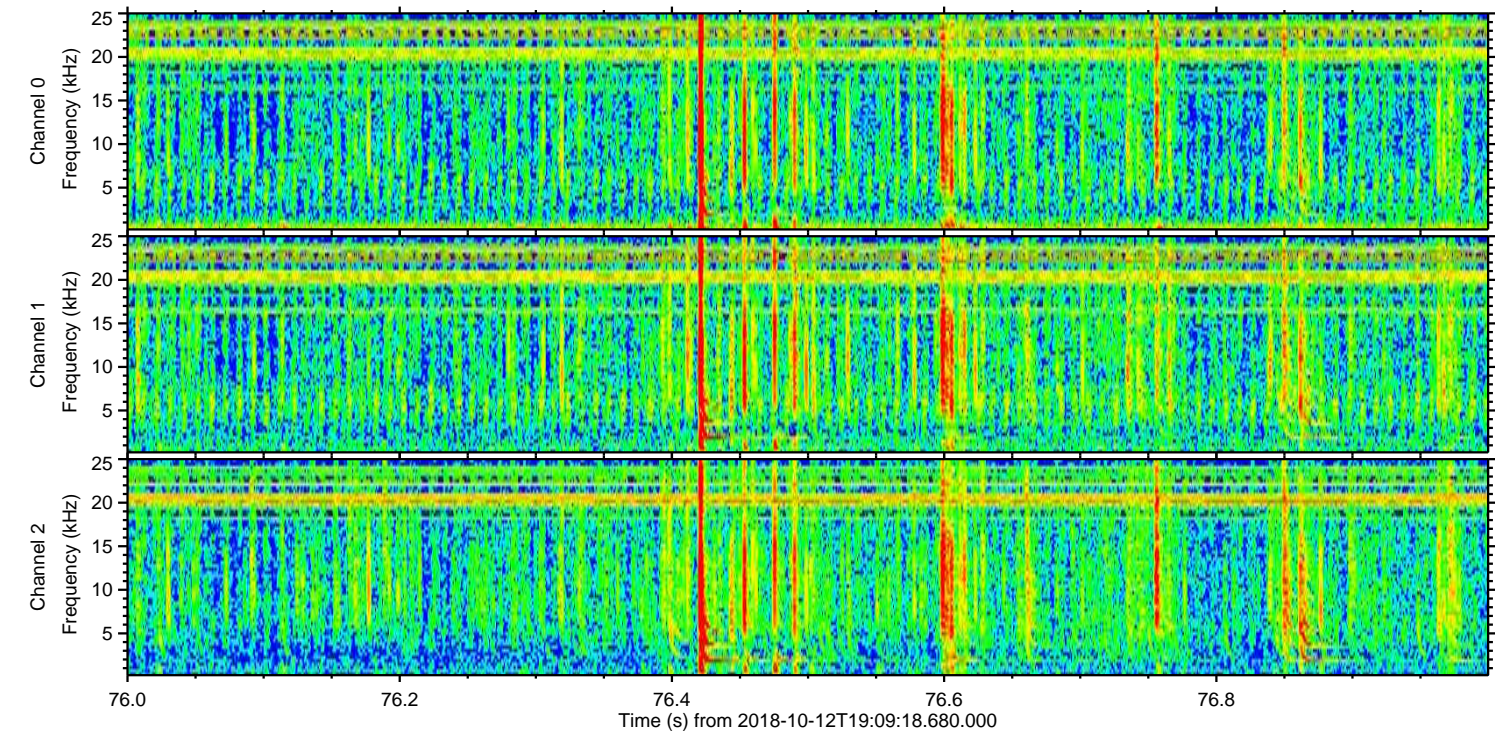
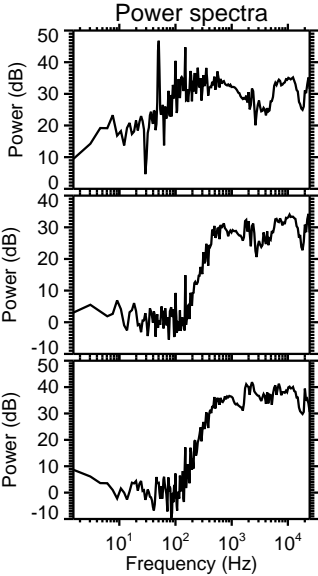
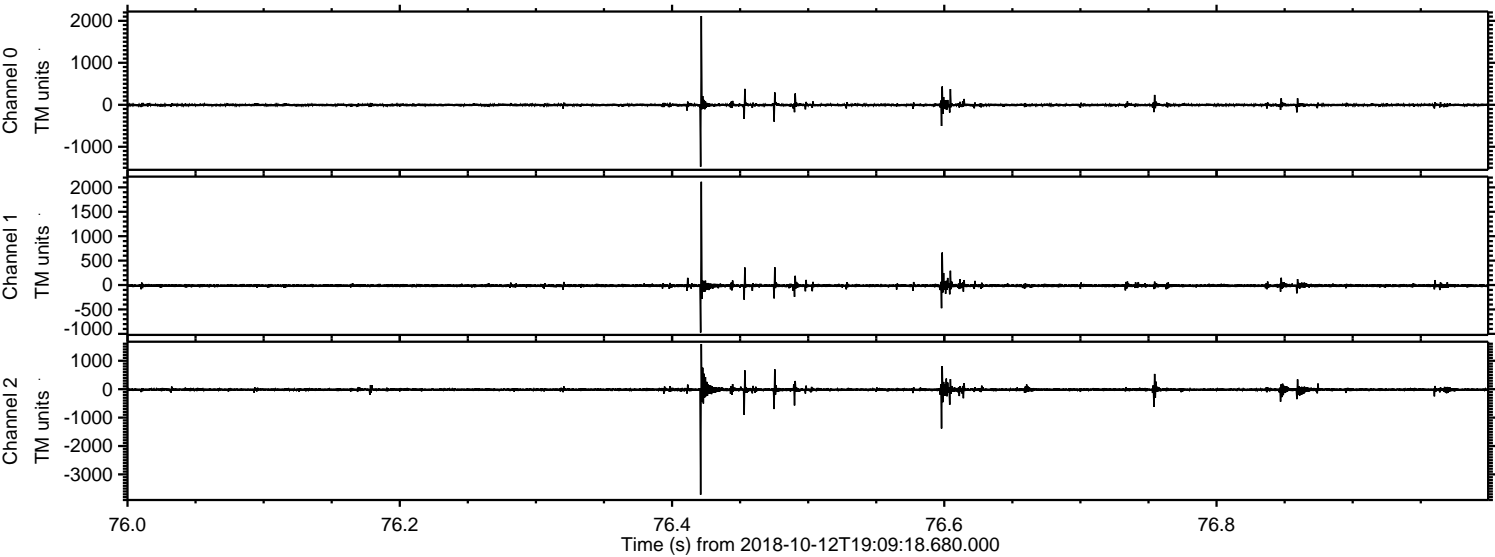


ELMAVAN 3D WAVEFORMS (Measured data sampled at 50 kHz) 51000 packets of 144 samples from 2018-10-12T19:09:18.680.000.

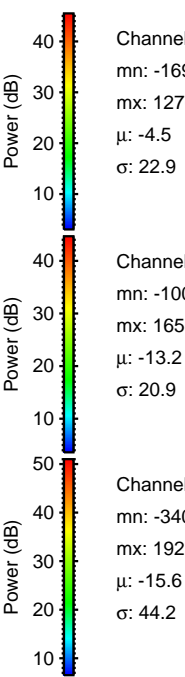
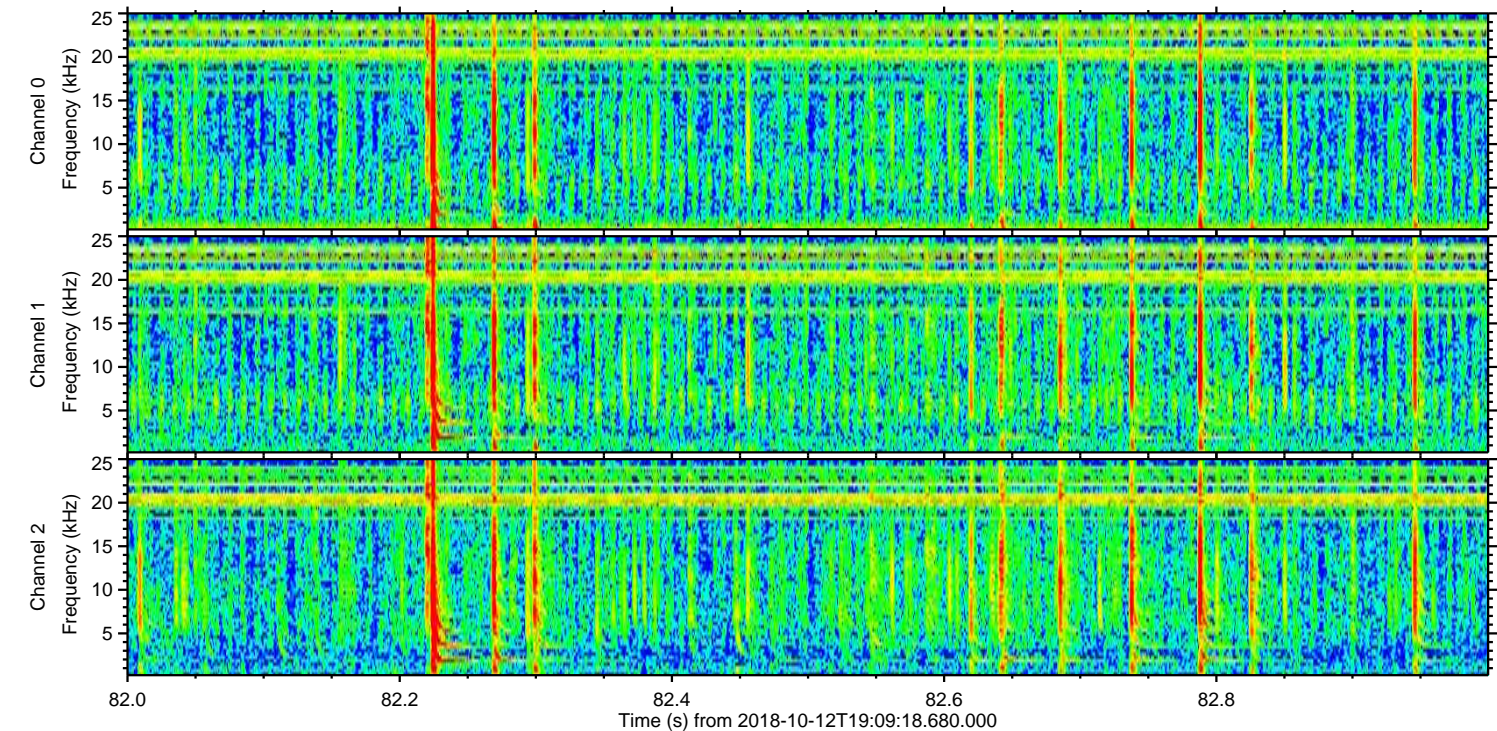
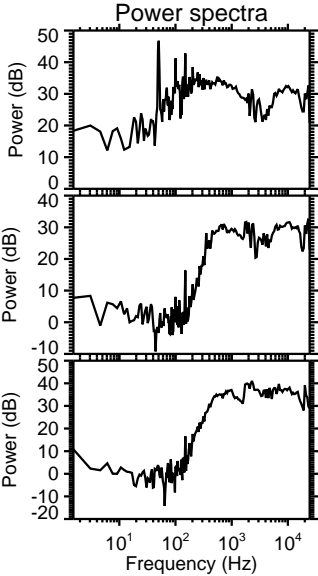
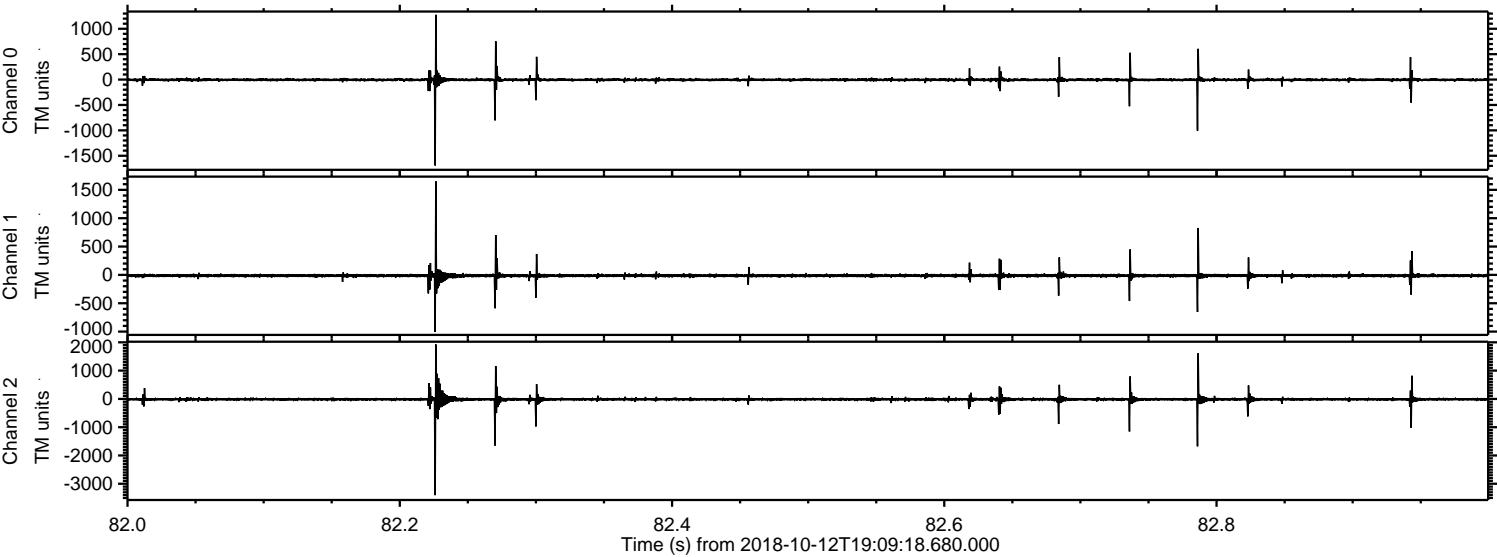
Processed Fri Oct 12 21:16:45 2018 by ELM ver.2012-10-06 from 001__elm20181012_190917__dat00.bin



Processed Fri Oct 12 21:16:54 2018 by ELM ver.2012-10-06 from 001__elm20181012_190917__dat00.bin

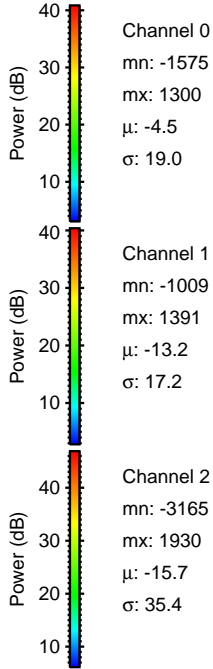
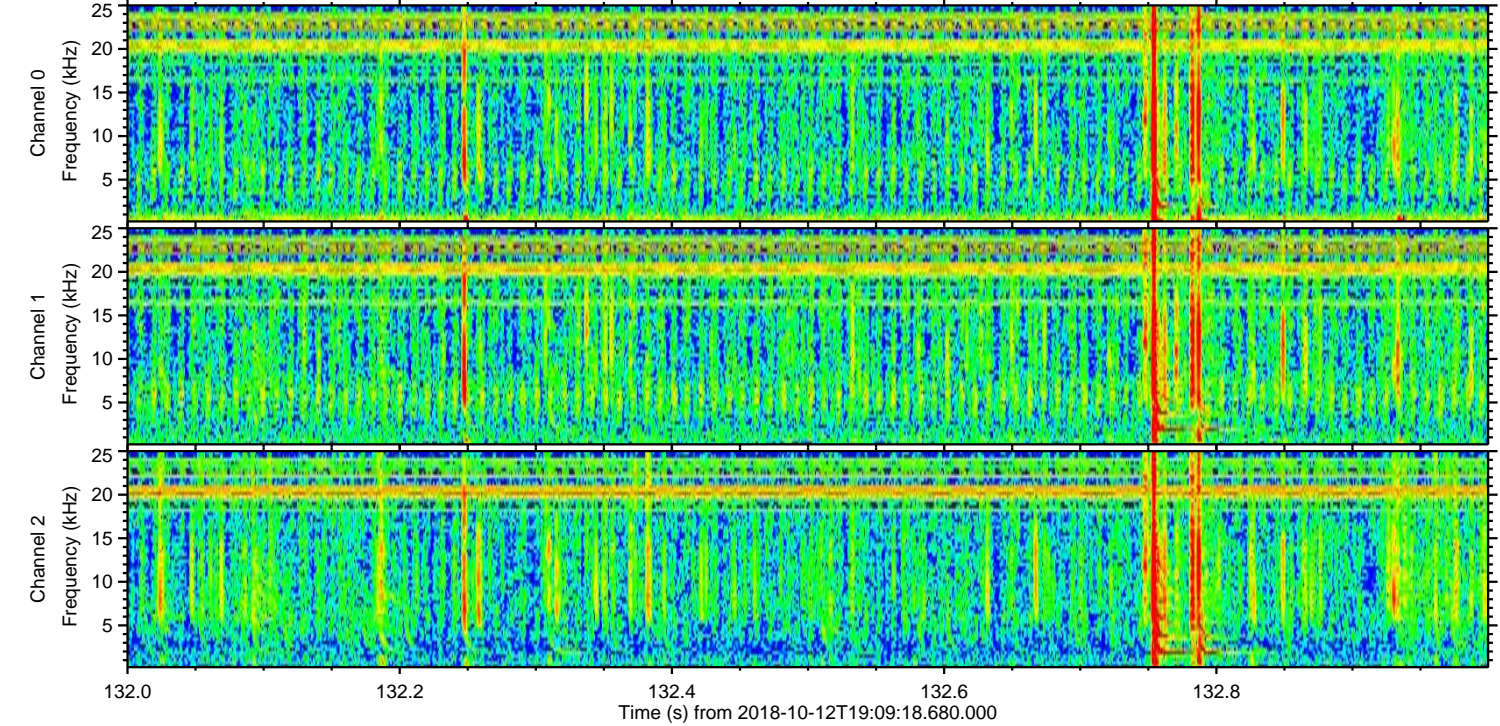
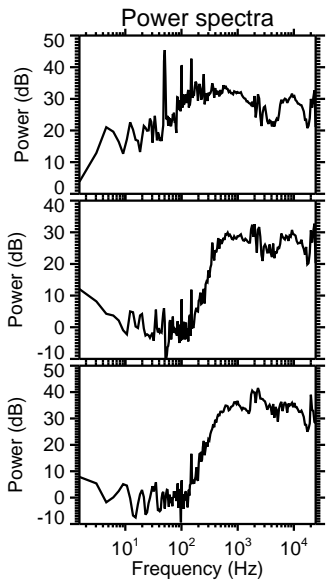
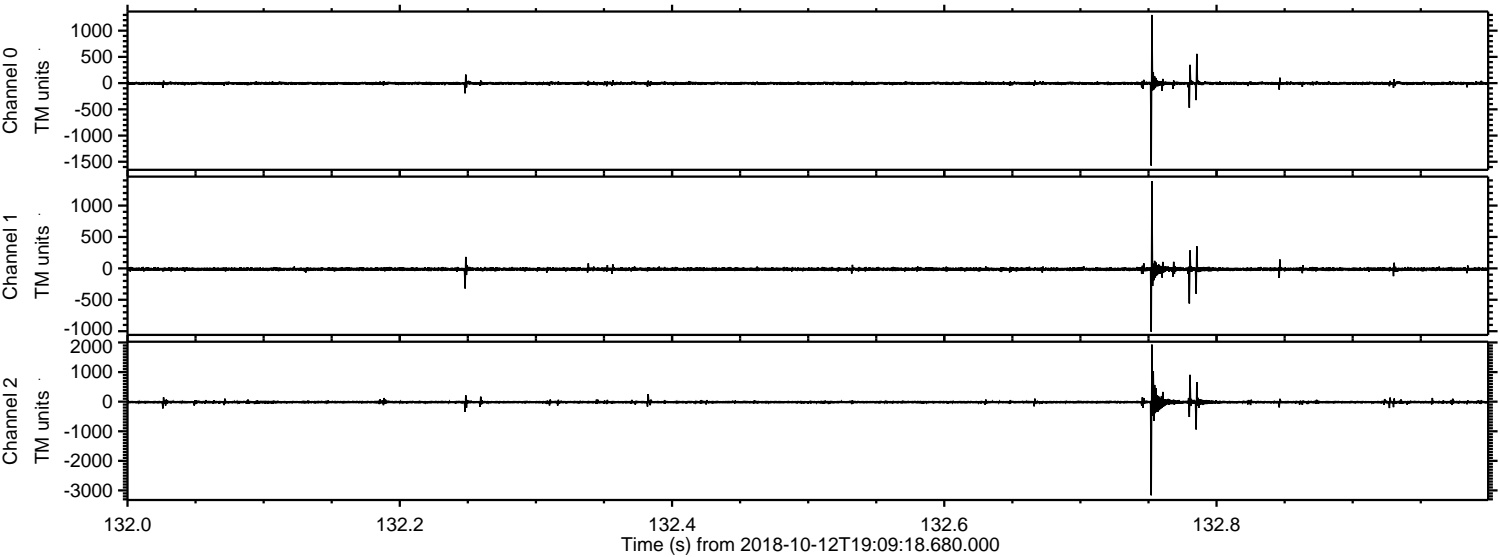


Processed Fri Oct 12 21:16:55 2018 by ELM ver.2012-10-06 from 001__elm20181012_190917__dat00.bin



ELMAVAN 3D WAVEFORMS (Measured data sampled at 50 kHz) 51000 packets of 144 samples from 2018-10-12T19:09:18.680.000. Part 133/147

Processed Fri Oct 12 21:16:56 2018 by ELM ver.2012-10-06 from 001__elm20181012_190917__dat00.bin



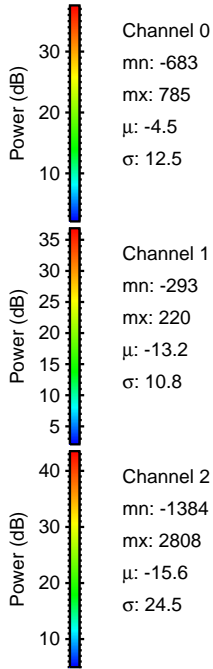
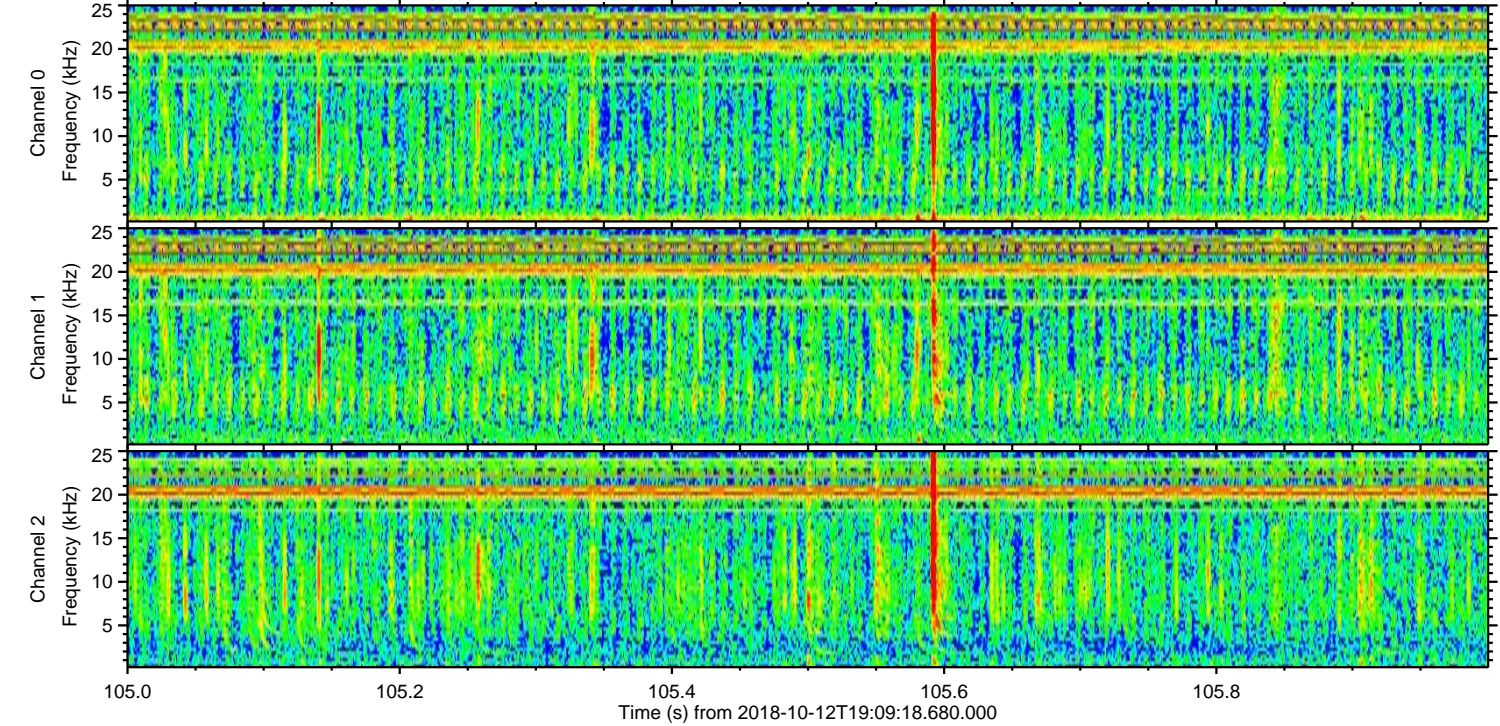
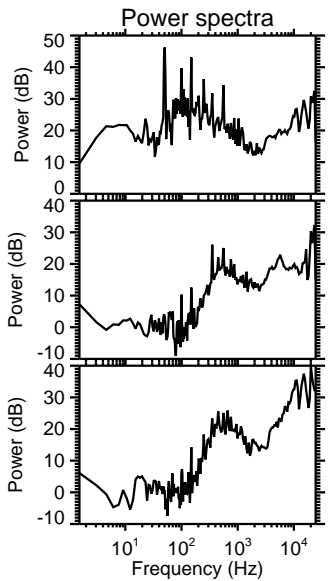
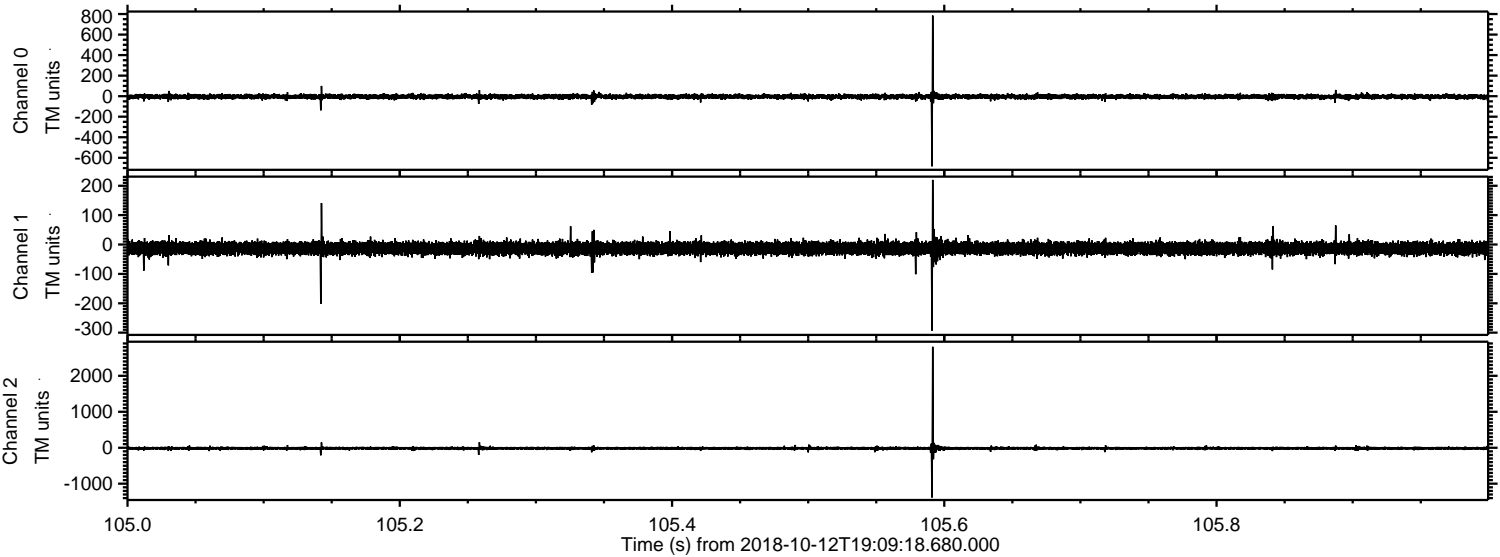
Channel 0
mn: -1575
mx: 1300
 μ : -4.5
 σ : 19.0

Channel 1
mn: -1009
mx: 1391
 μ : -13.2
 σ : 17.2

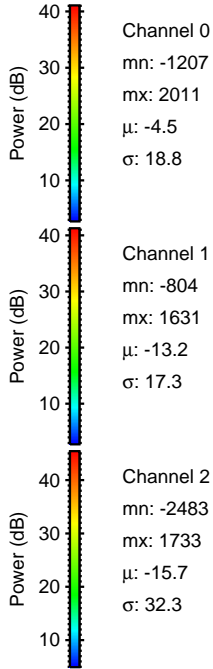
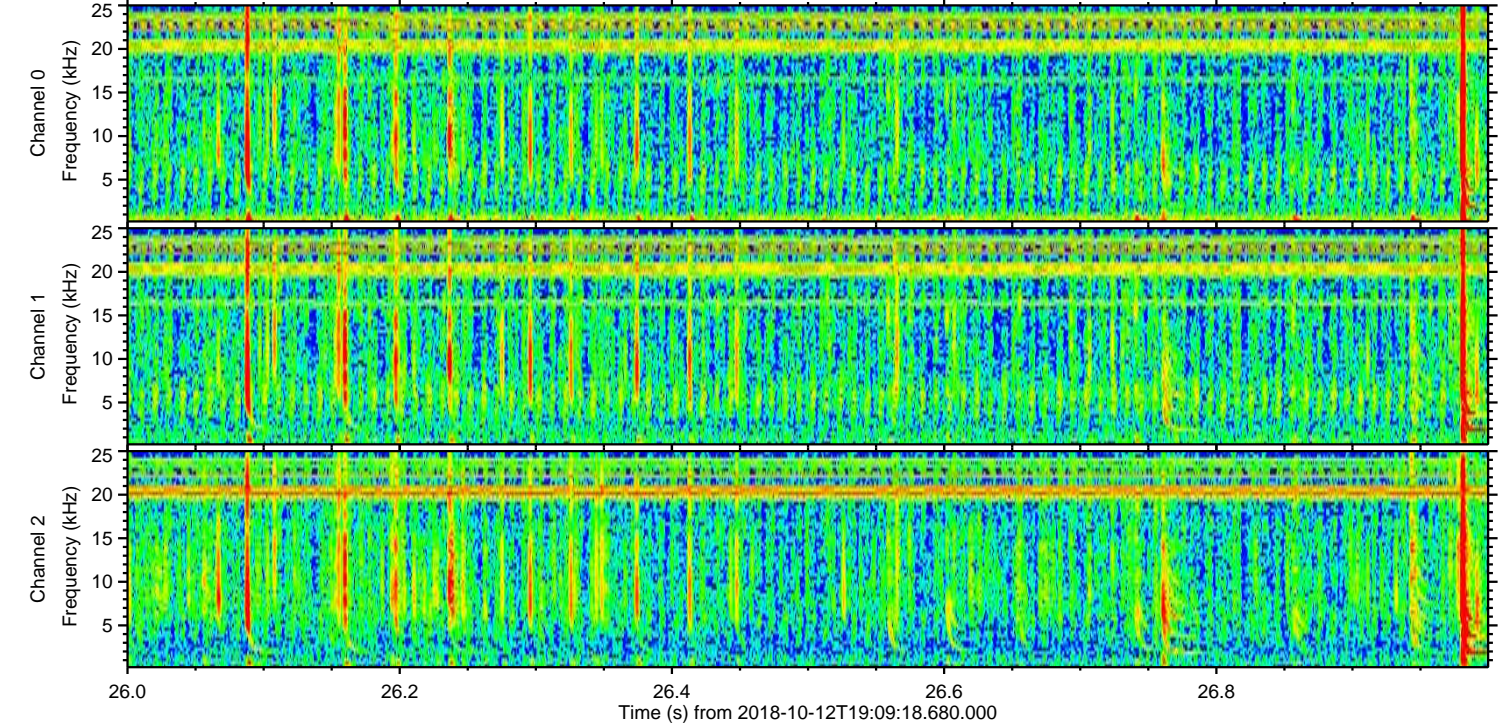
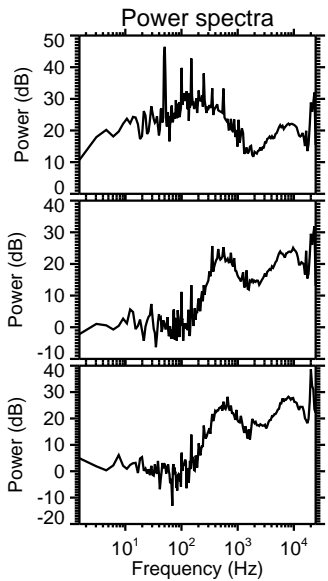
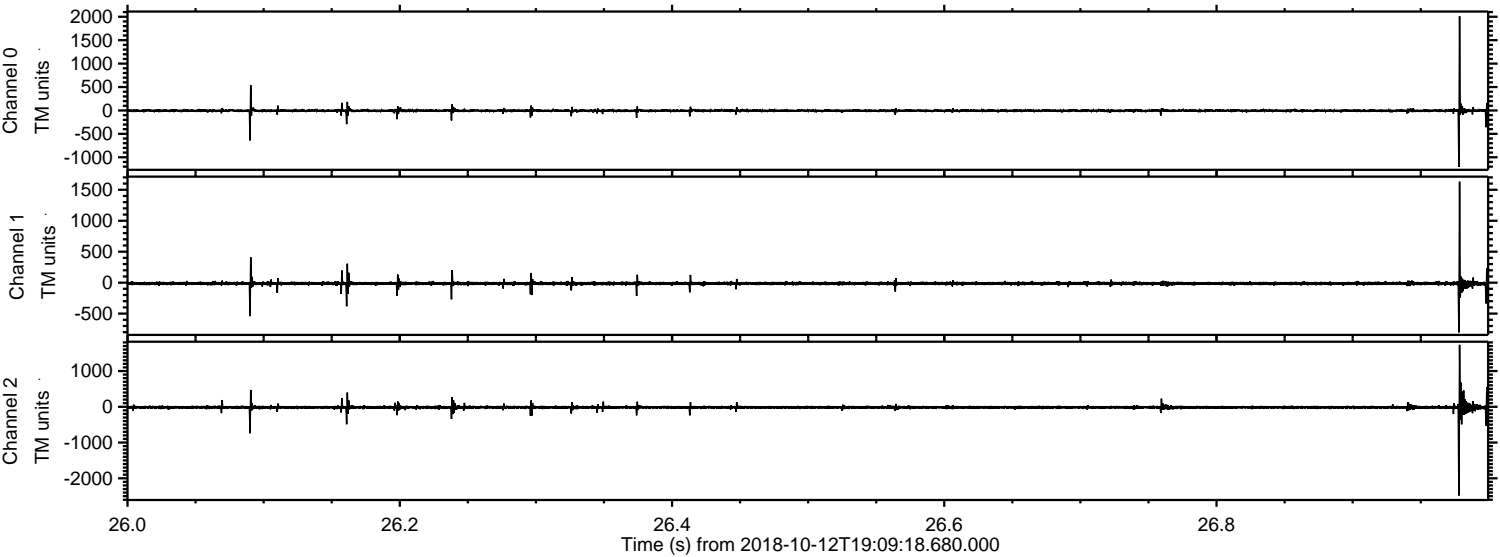
Channel 2
mn: -3165
mx: 1930
 μ : -15.7
 σ : 35.4

ELMAVAN 3D WAVEFORMS (Measured data sampled at 50 kHz) 51000 packets of 144 samples from 2018-10-12T19:09:18.680.000. Part 106/147

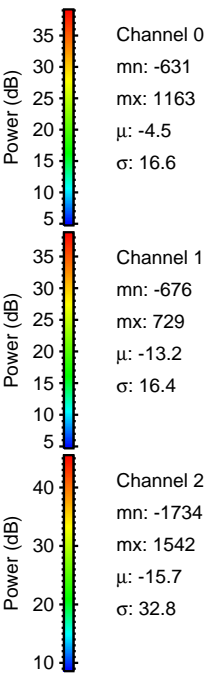
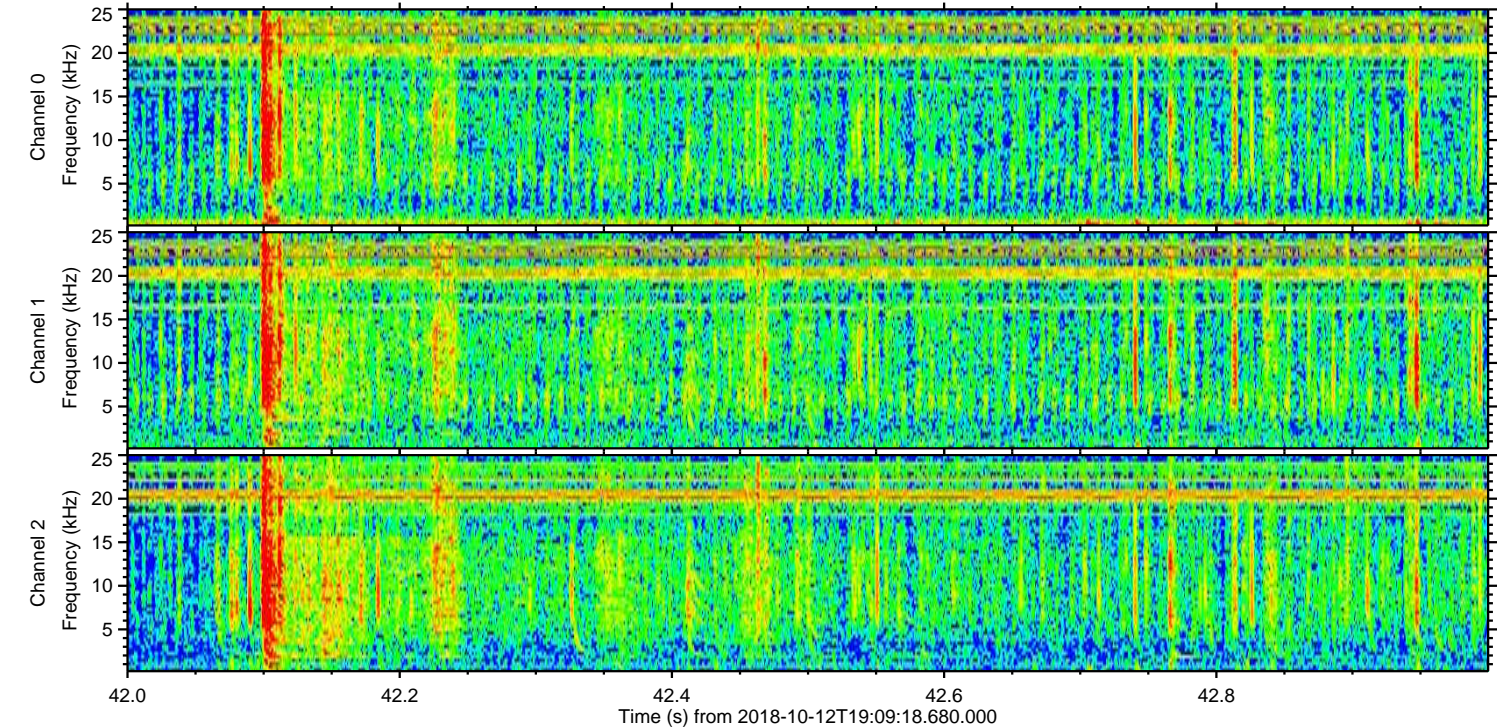
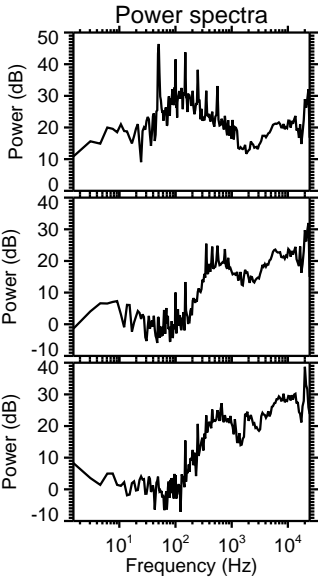
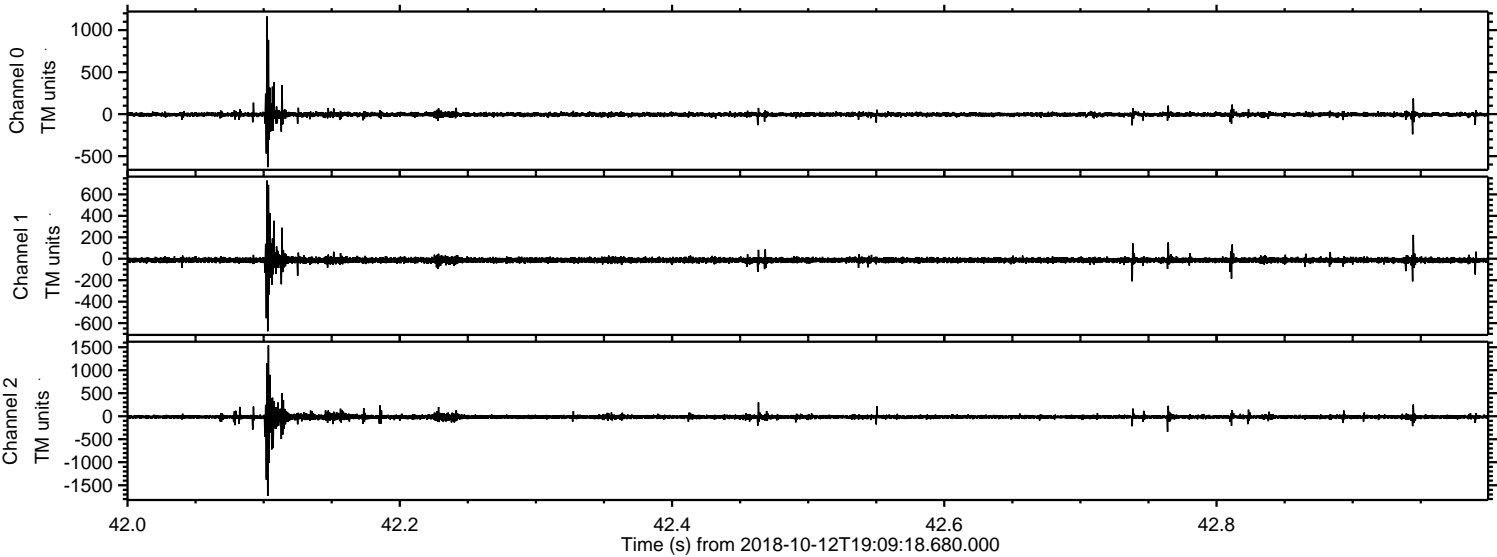
Processed Fri Oct 12 21:16:57 2018 by ELM ver.2012-10-06 from 001__elm20181012_190917__dat00.bin



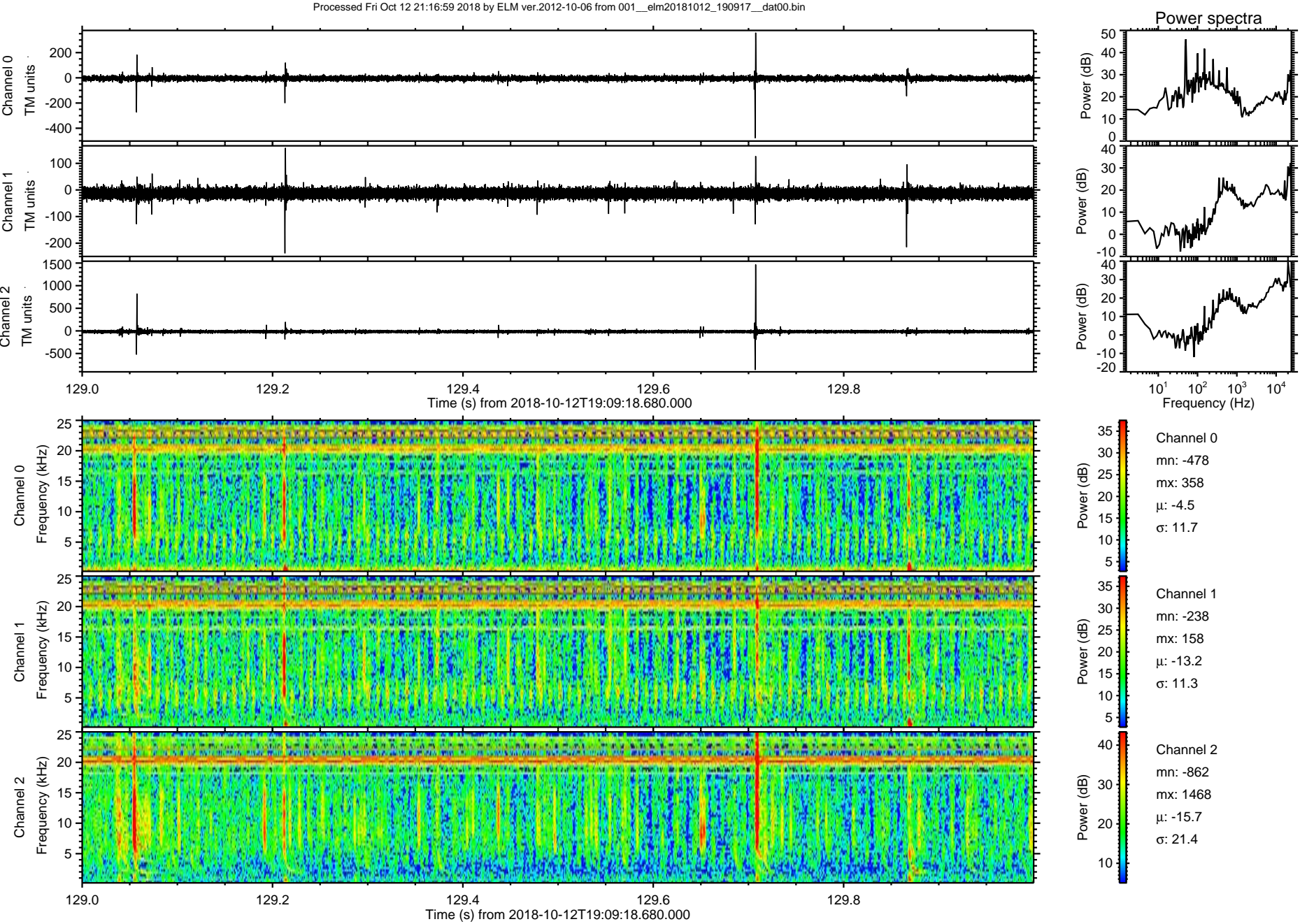
Processed Fri Oct 12 21:16:58 2018 by ELM ver.2012-10-06 from 001__elm20181012_190917__dat00.bin



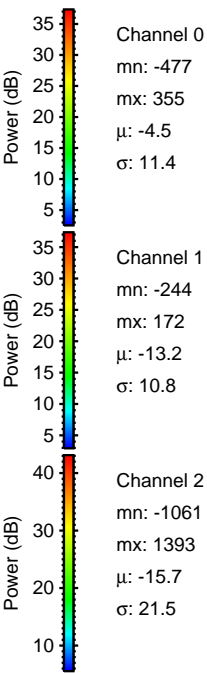
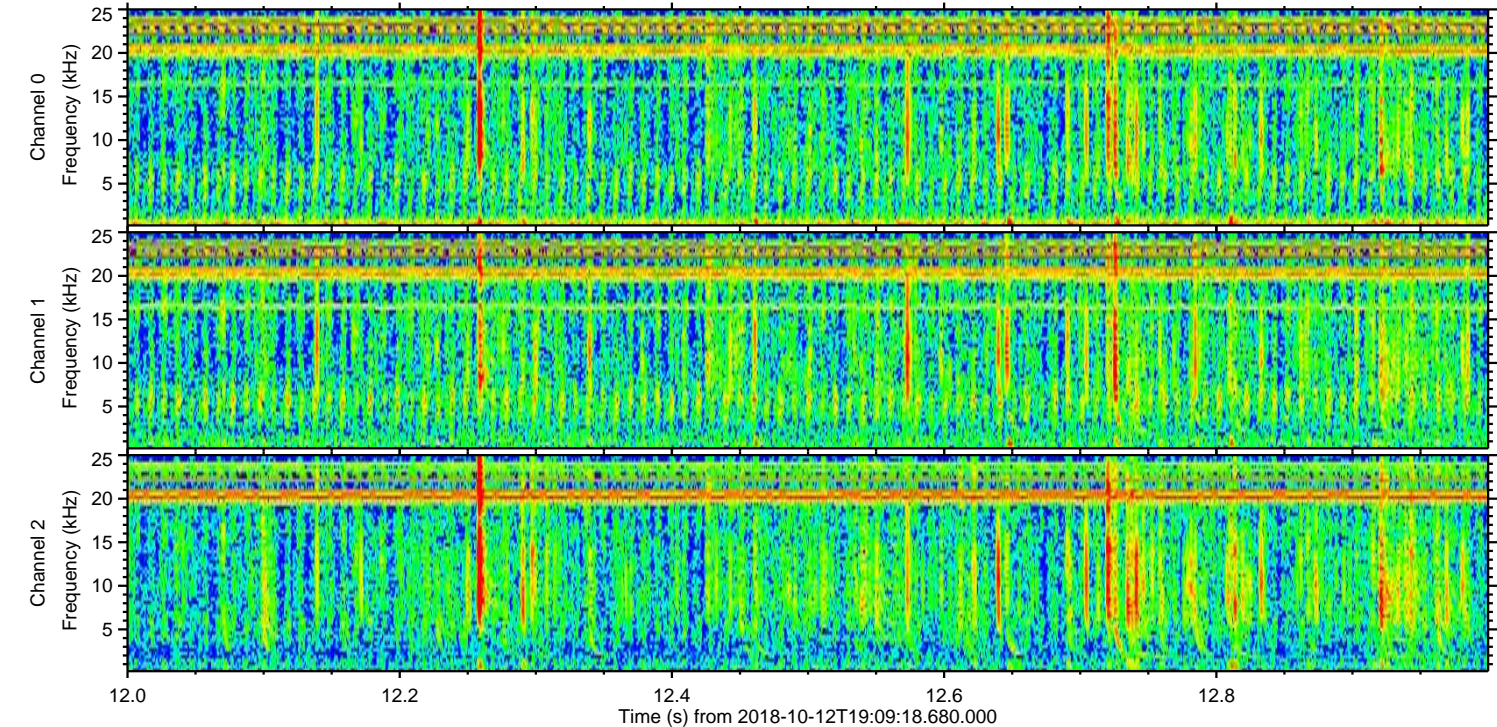
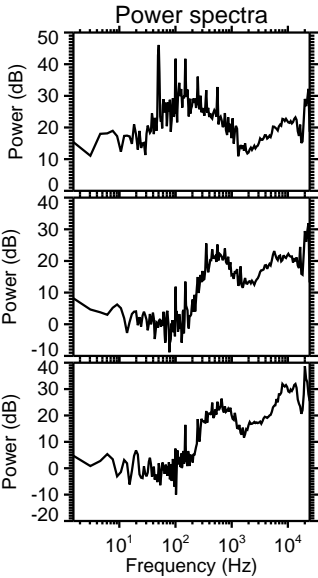
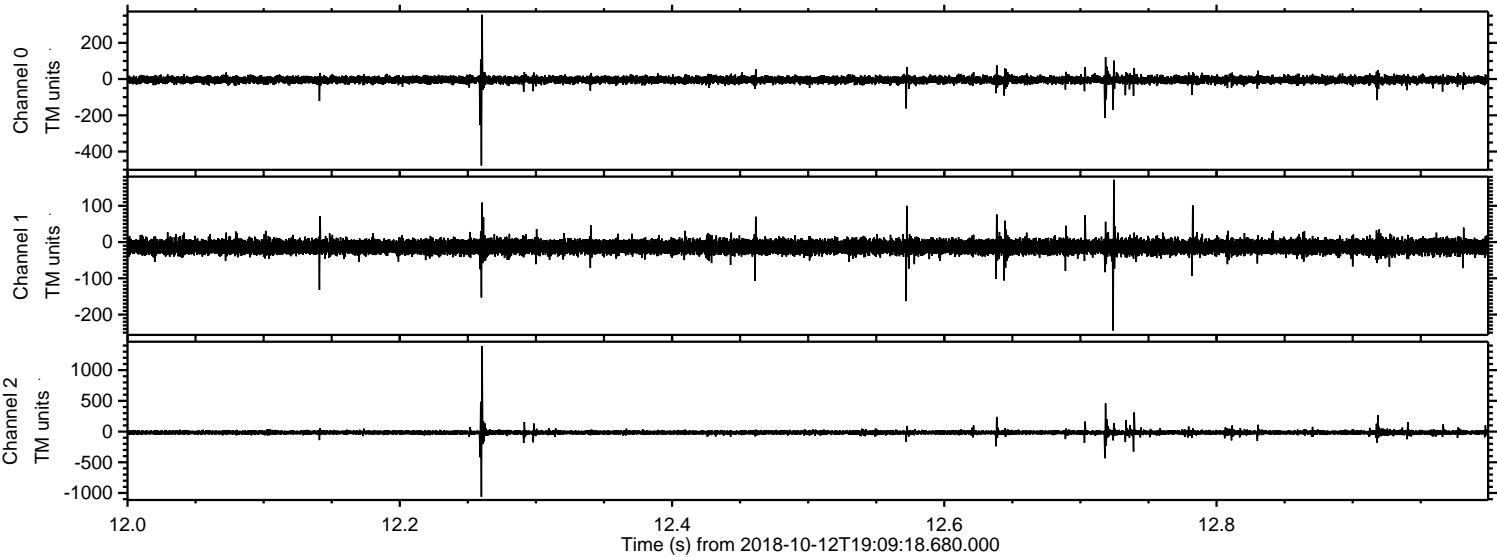
Processed Fri Oct 12 21:16:58 2018 by ELM ver.2012-10-06 from 001__elm20181012_190917__dat00.bin



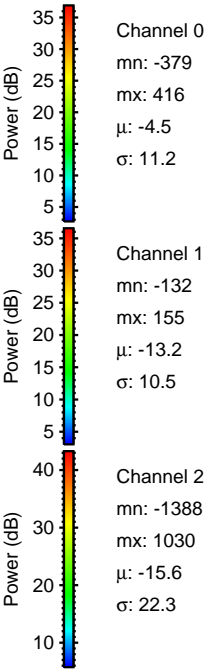
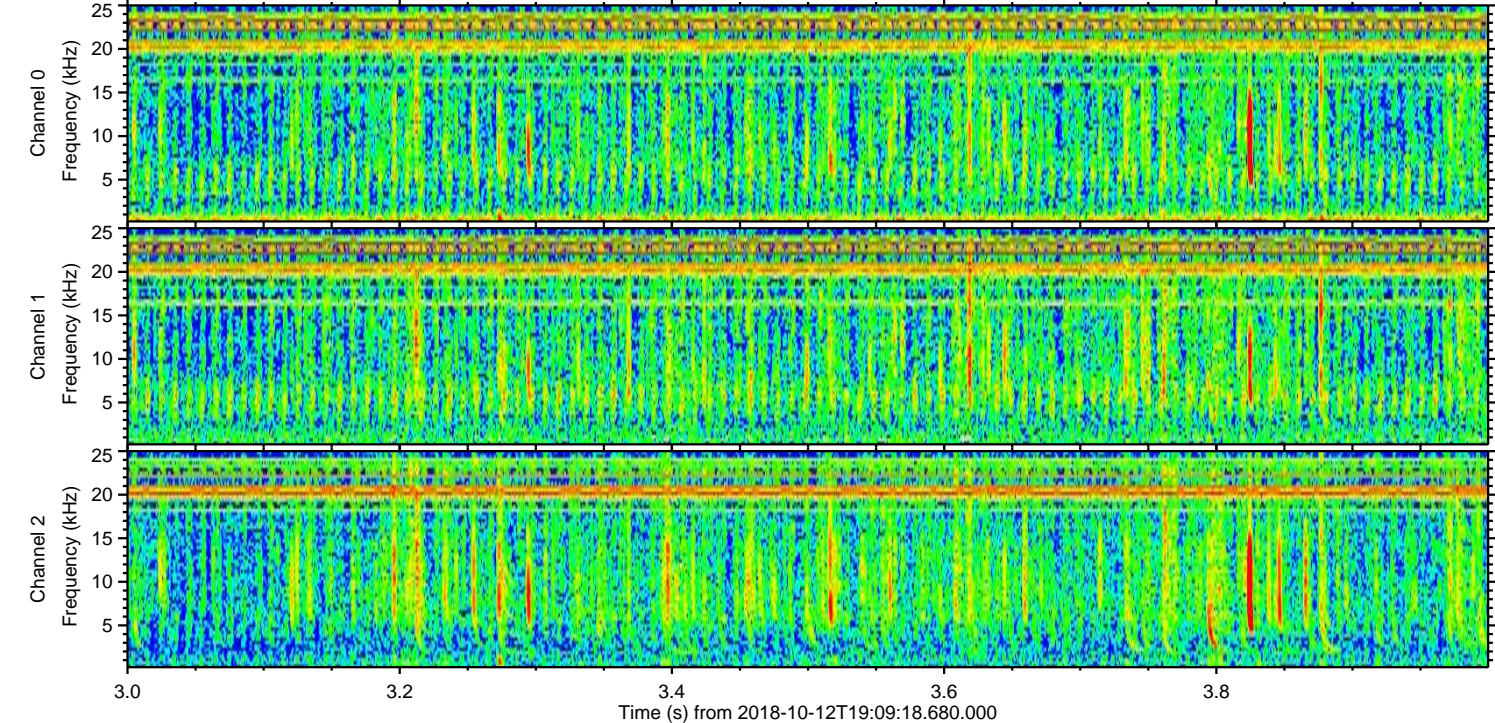
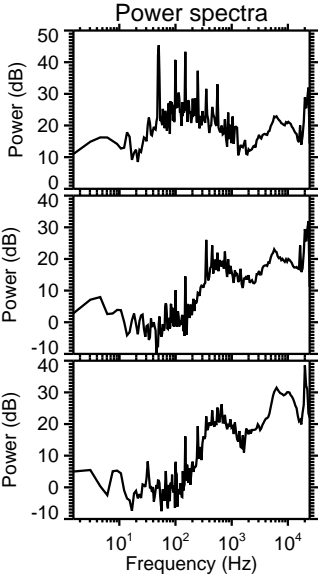
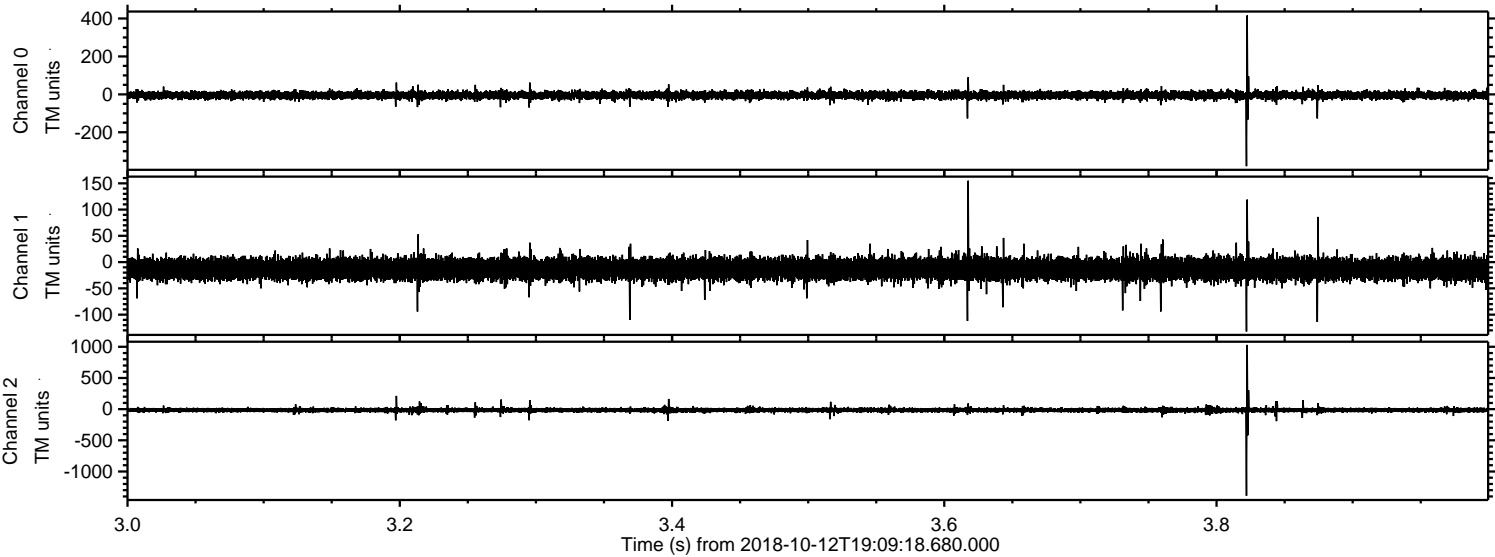
ELMAVAN 3D WAVEFORMS (Measured data sampled at 50 kHz) 51000 packets of 144 samples from 2018-10-12T19:09:18.680.000. Part 130/147



Processed Fri Oct 12 21:17:00 2018 by ELM ver.2012-10-06 from 001__elm20181012_190917__dat00.bin



Processed Fri Oct 12 21:17:01 2018 by ELM ver.2012-10-06 from 001__elm20181012_190917__dat00.bin



Channel 0
mn: -379
mx: 416
 μ : -4.5
 σ : 11.2

Channel 1
mn: -132
mx: 155
 μ : -13.2
 σ : 10.5

Channel 2
mn: -1388
mx: 1030
 μ : -15.6
 σ : 22.3

