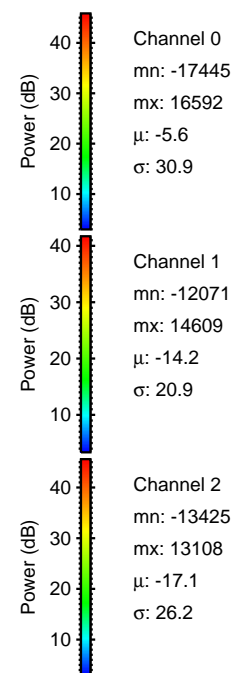
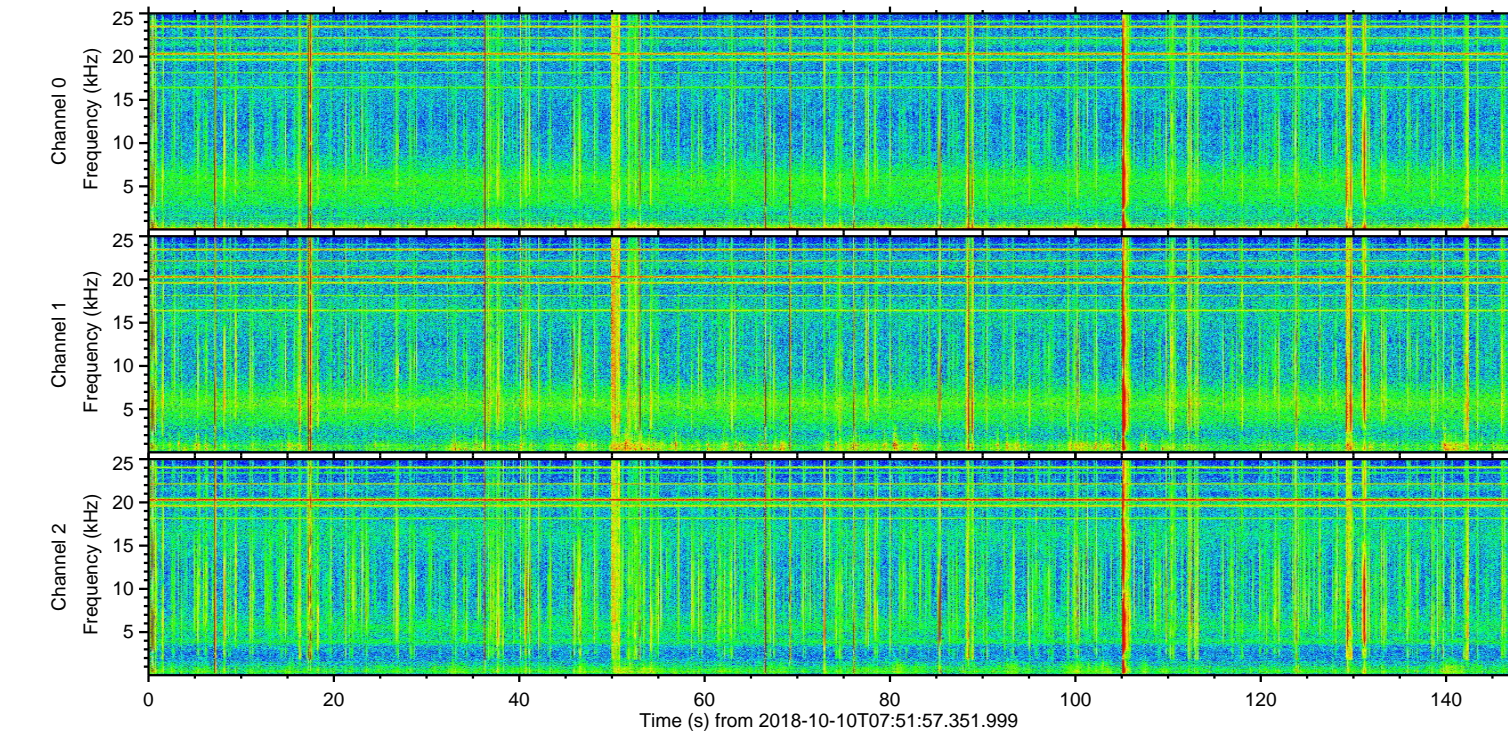
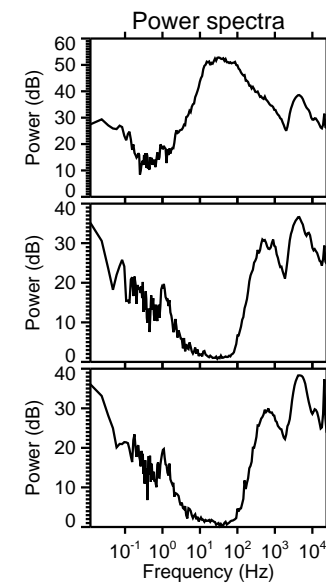
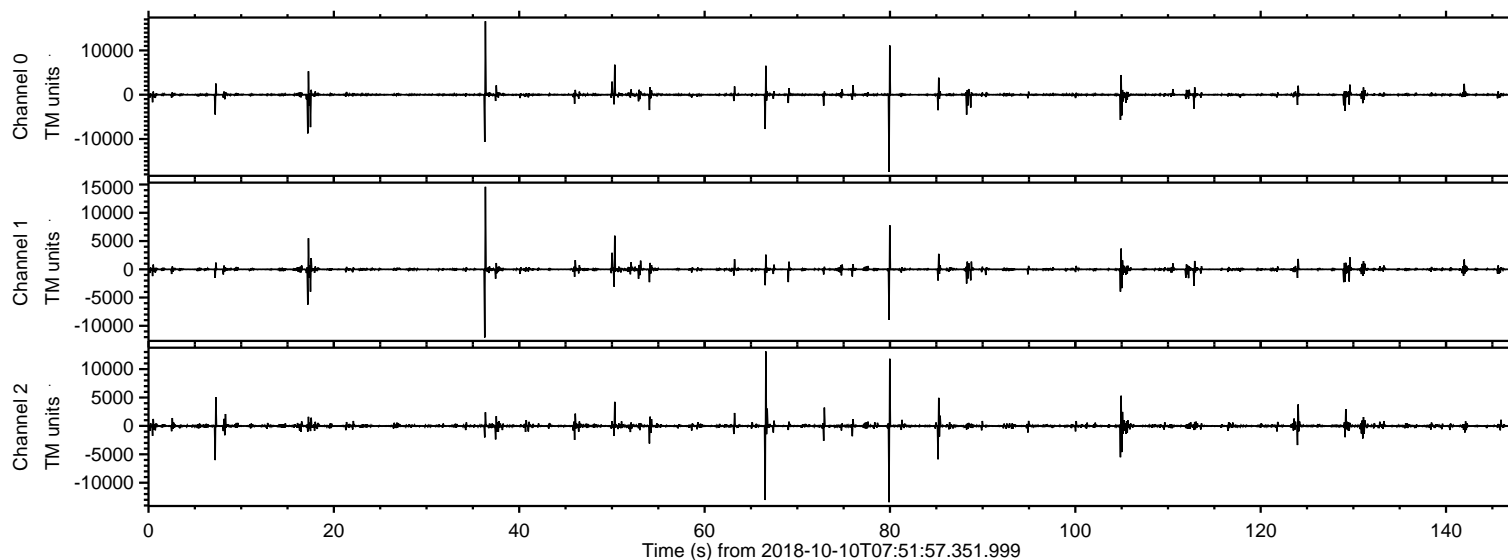
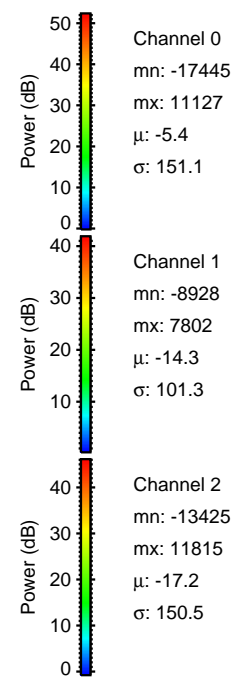
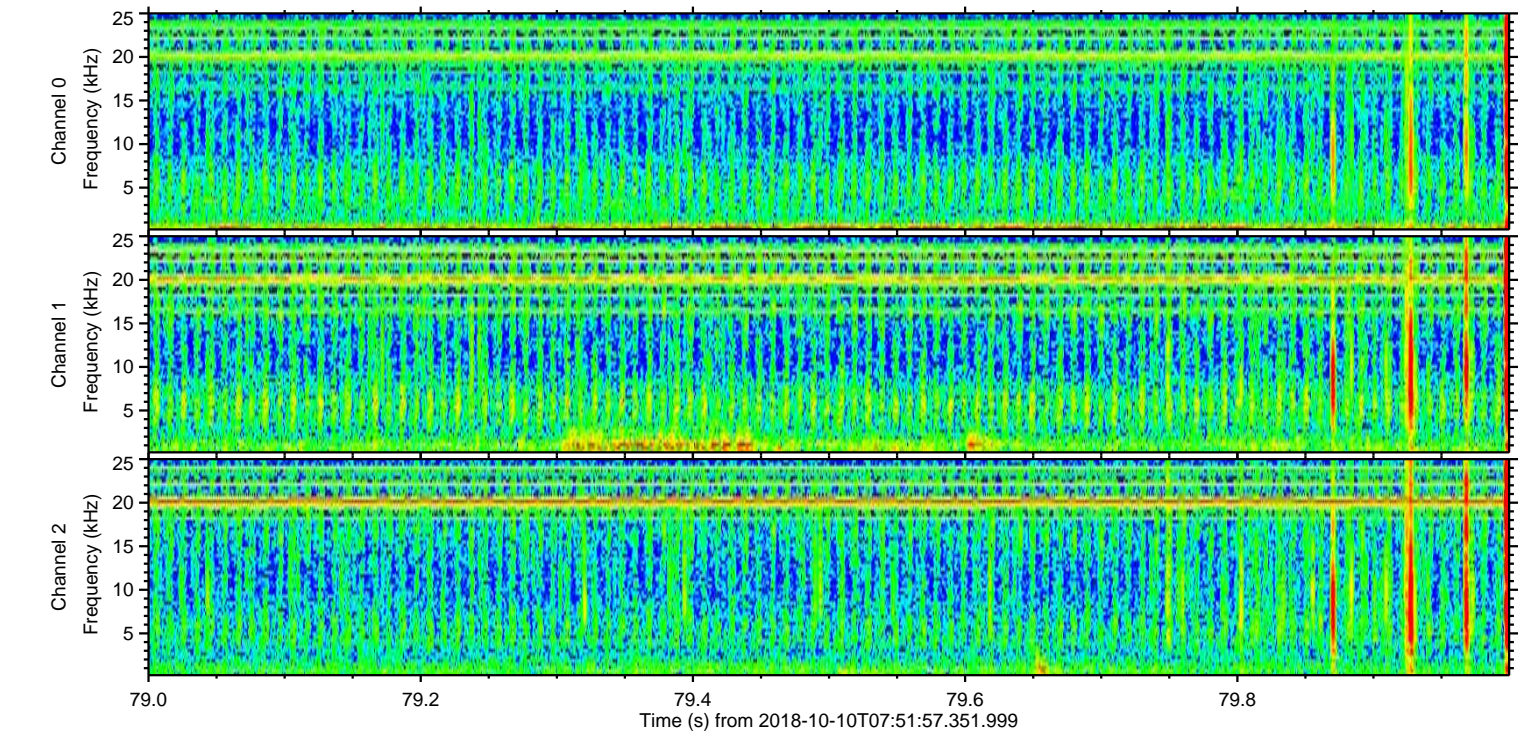
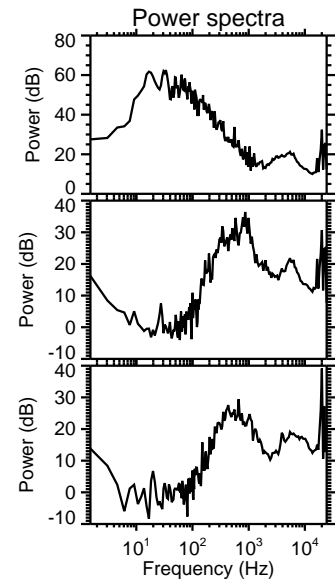
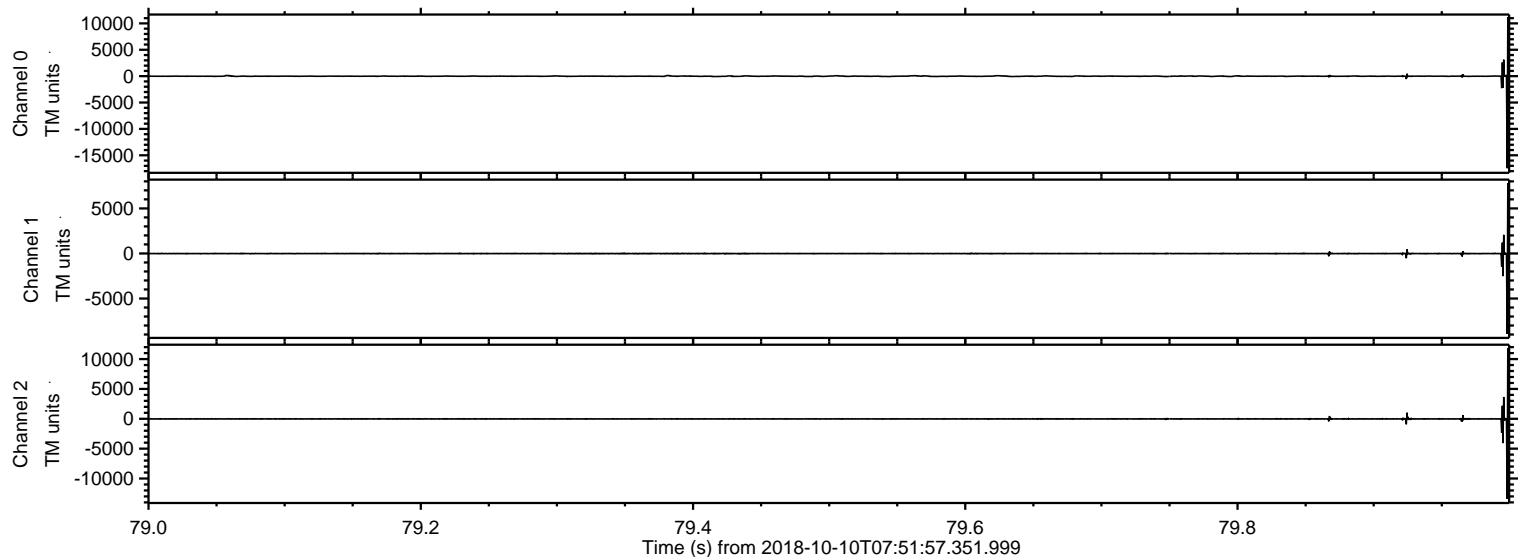


ELMAVAN 3D WAVEFORMS (Measured data sampled at 50 kHz) 51000 packets of 144 samples from 2018-10-10T07:51:57.351.999.

Processed Wed Oct 10 10:00:24 2018 by ELM ver.2012-10-06 from 001__elm20181010_075156__dat00.bin

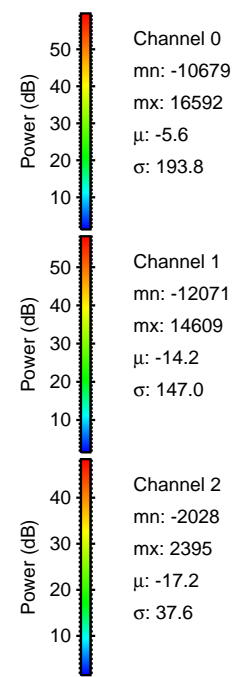
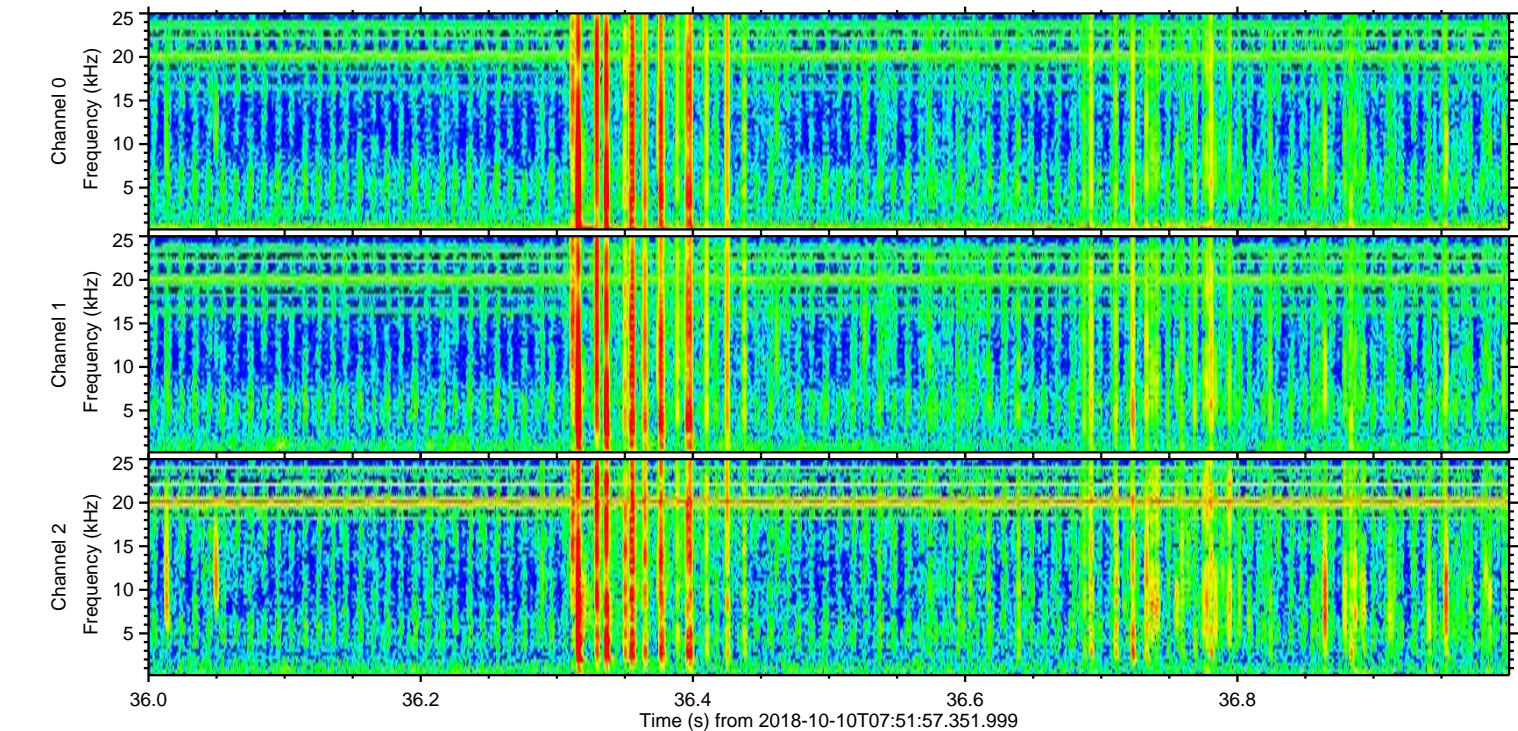
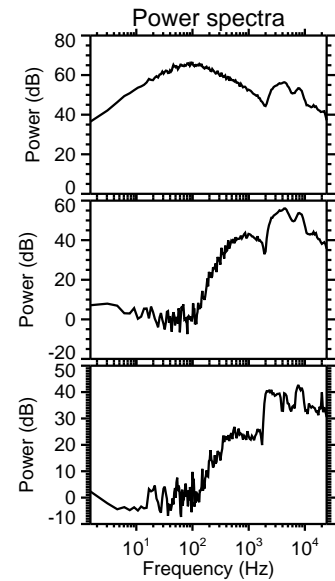
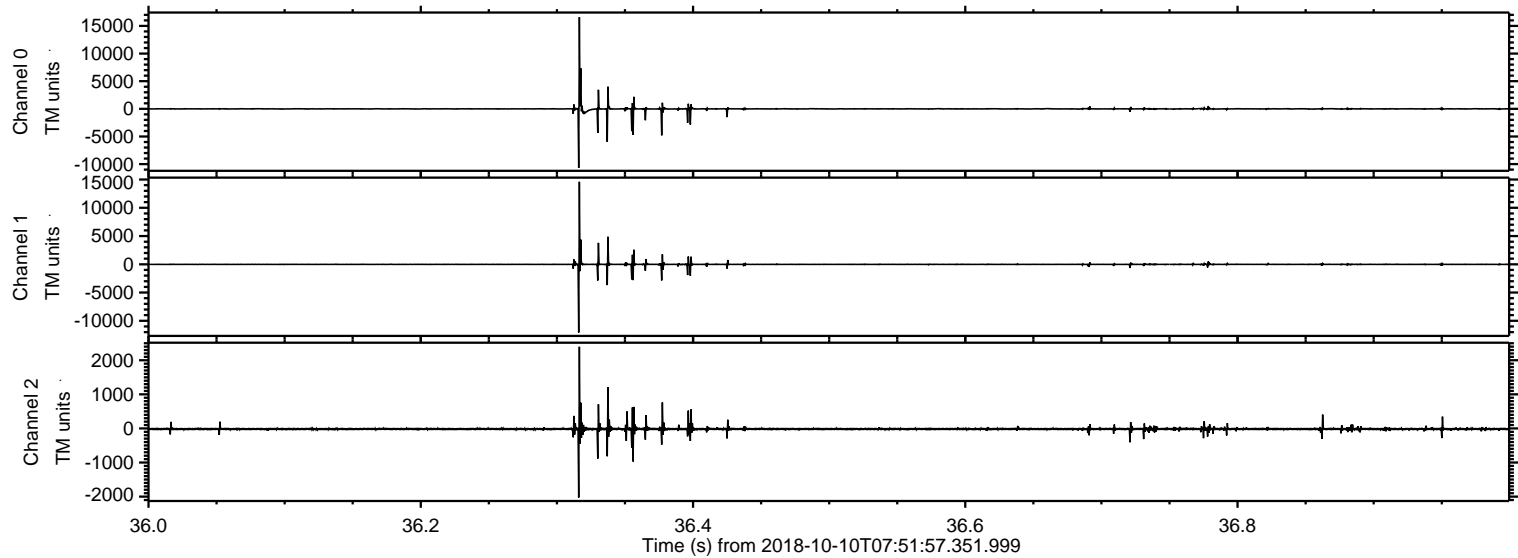


Processed Wed Oct 10 10:00:30 2018 by ELM ver.2012-10-06 from 001__elm20181010_075156__dat00.bin

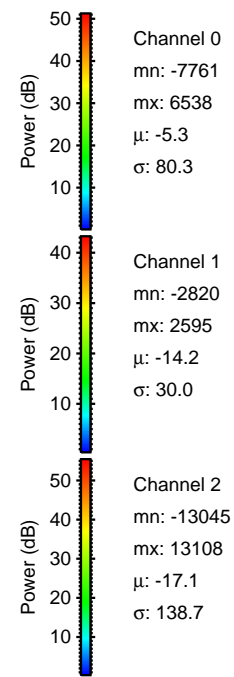
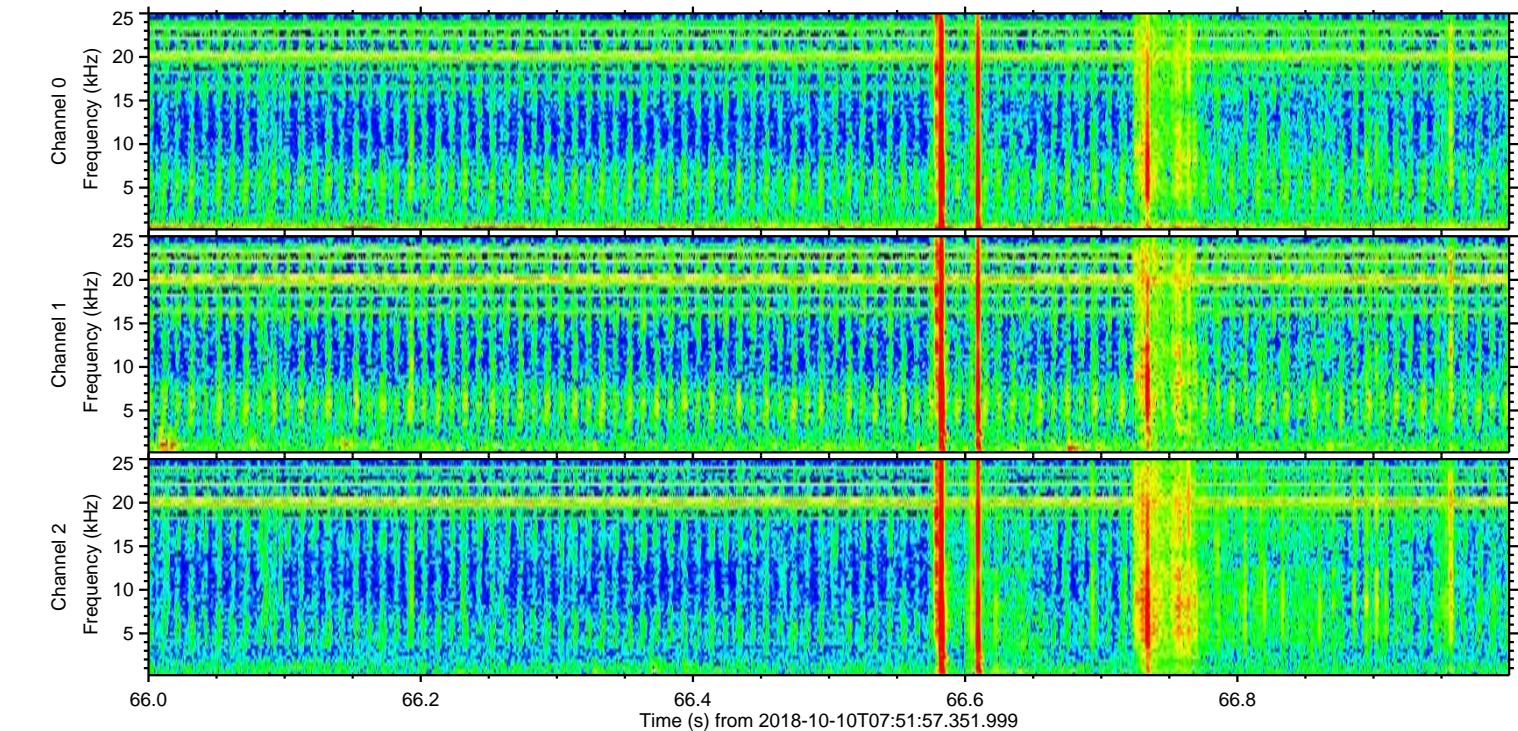
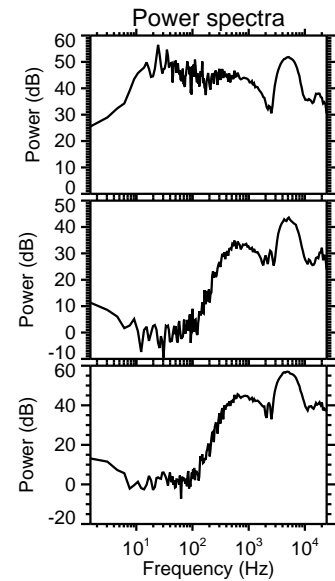
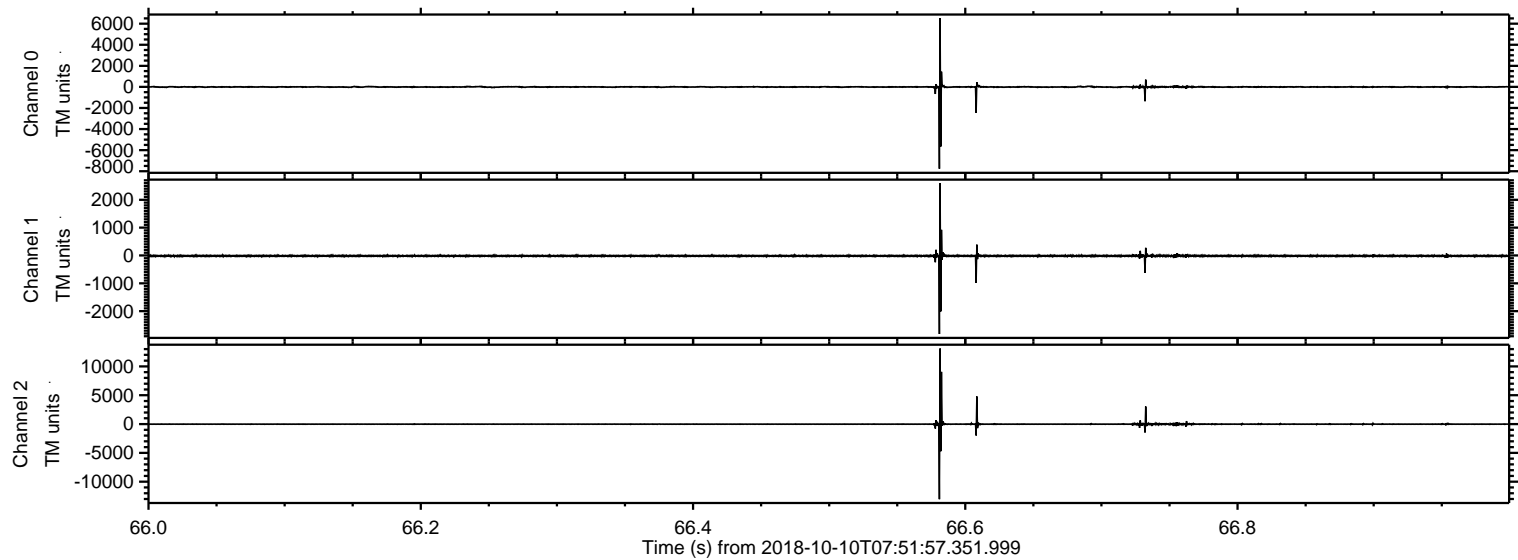


ELMAVAN 3D WAVEFORMS (Measured data sampled at 50 kHz) 51000 packets of 144 samples from 2018-10-10T07:51:57.351.999. Part 37/147

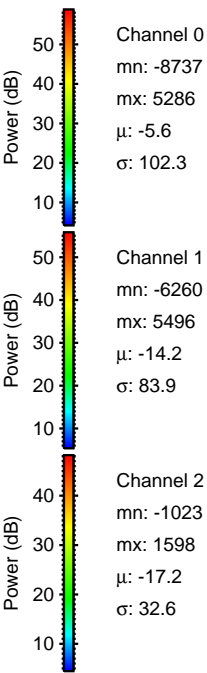
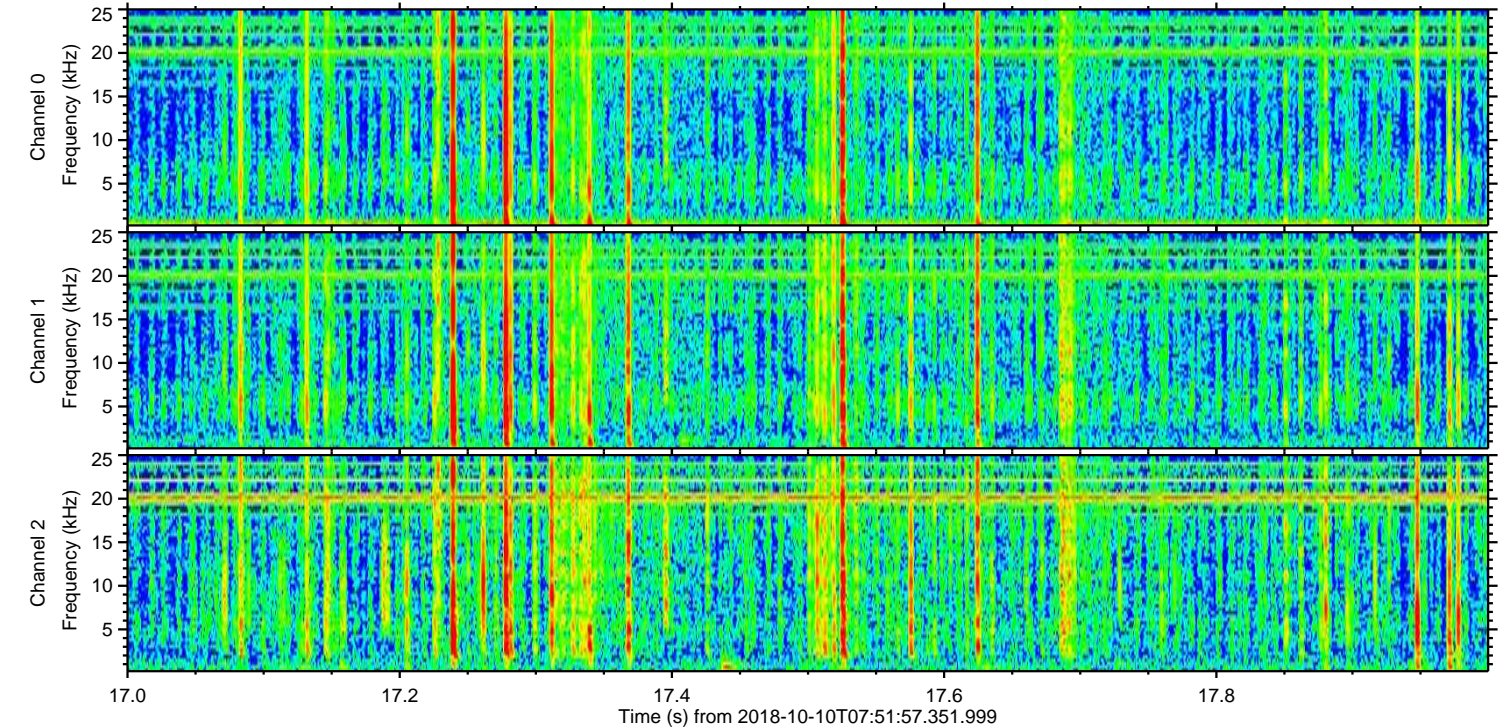
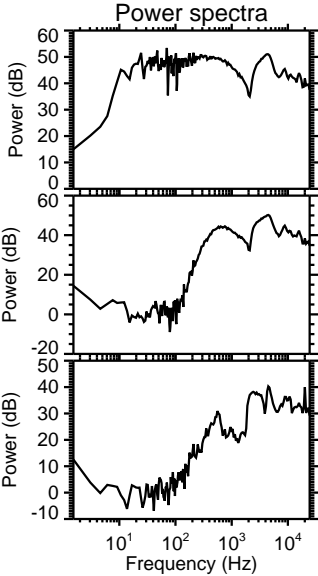
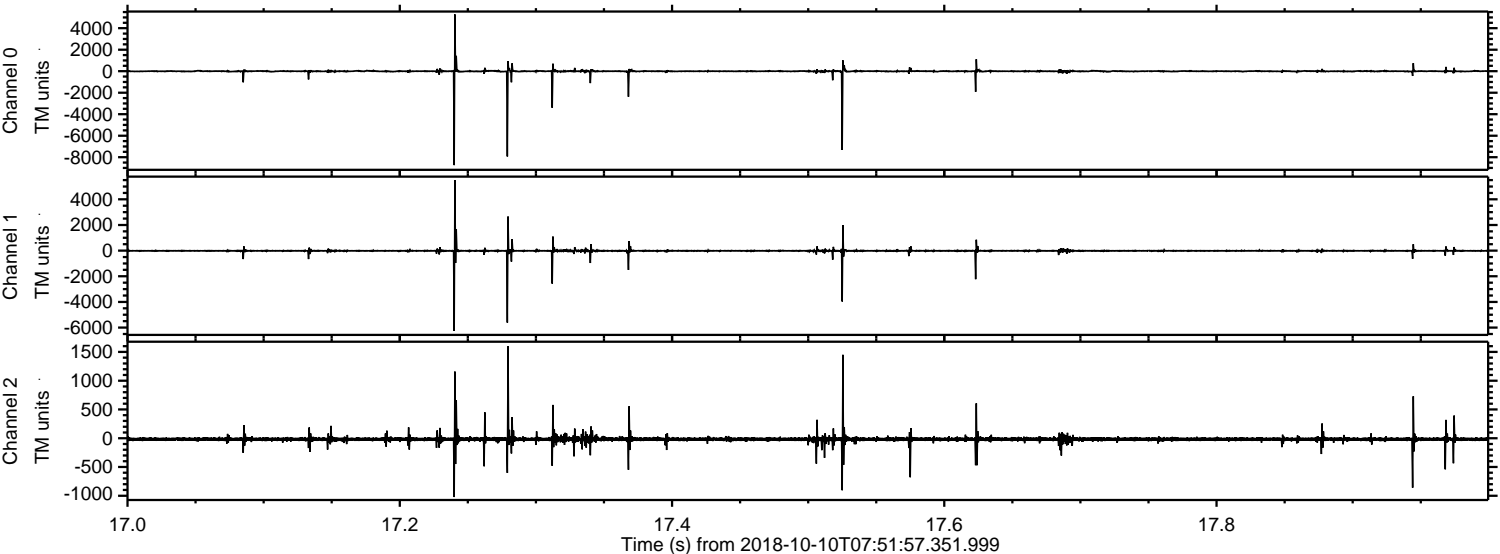
Processed Wed Oct 10 10:00:31 2018 by ELM ver.2012-10-06 from 001__elm20181010_075156__dat00.bin



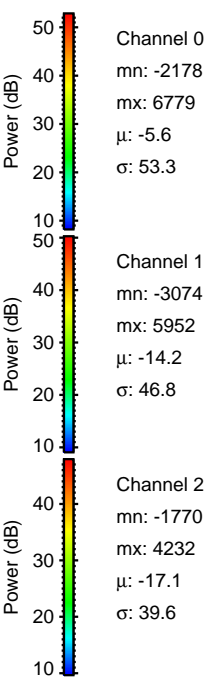
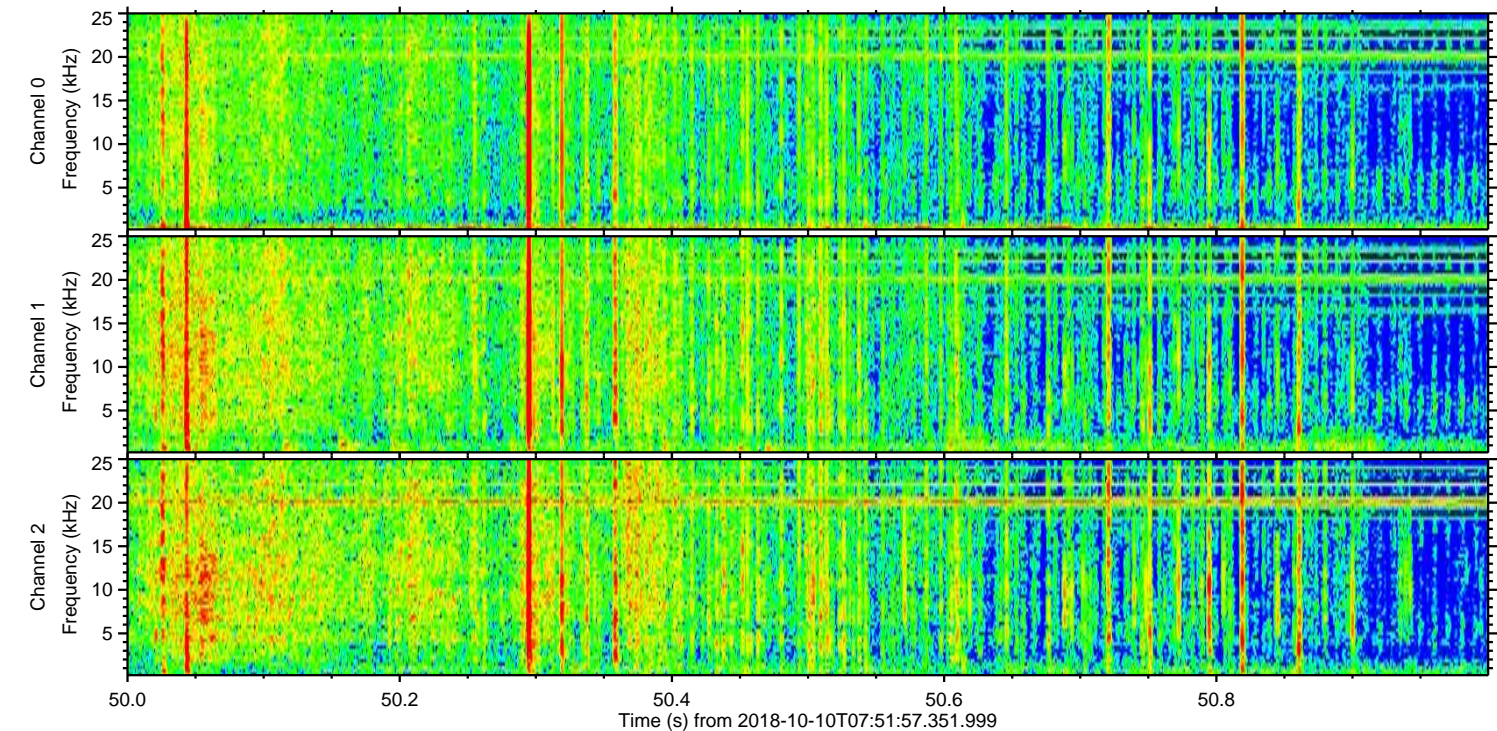
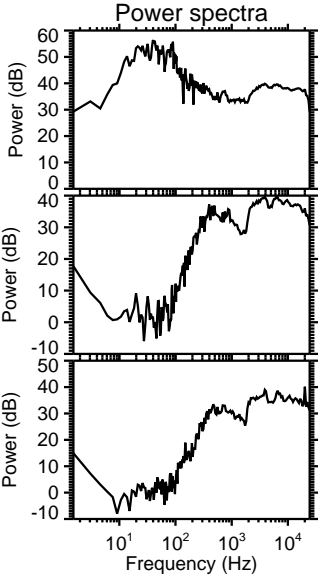
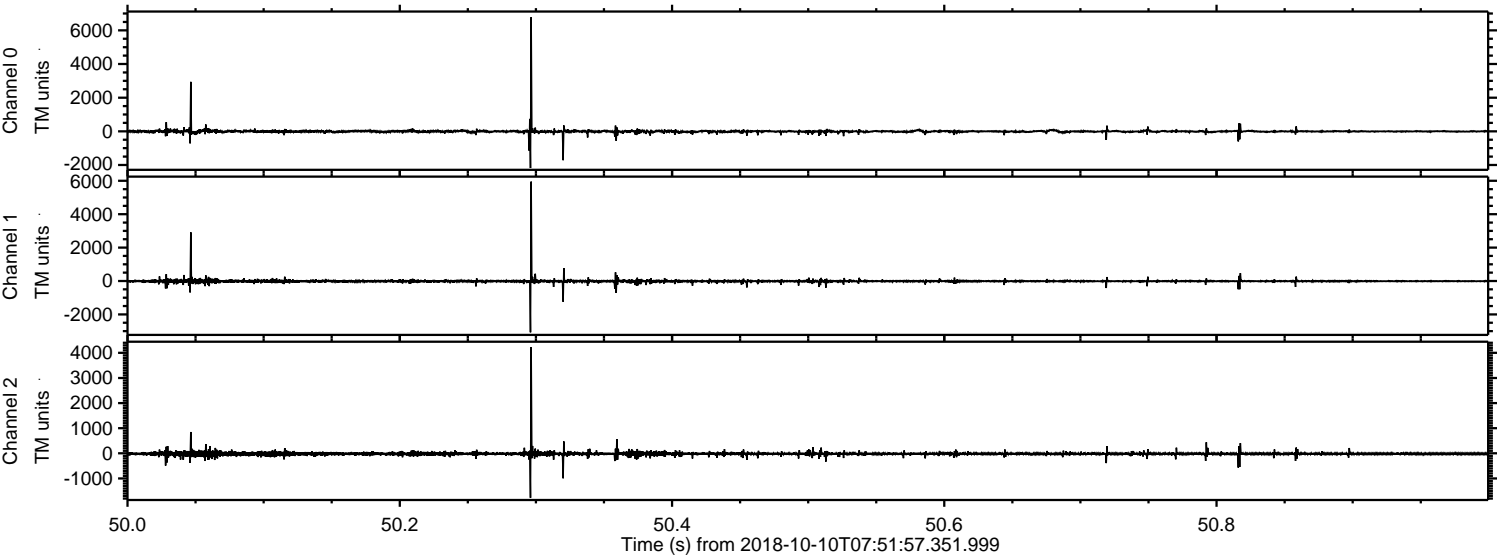
Processed Wed Oct 10 10:00:32 2018 by ELM ver.2012-10-06 from 001__elm20181010_075156__dat00.bin



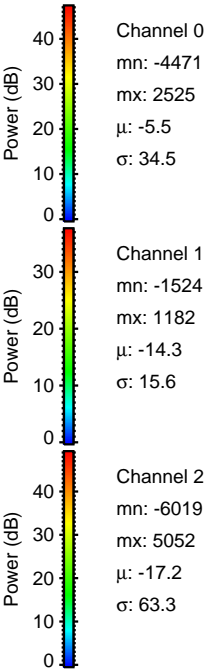
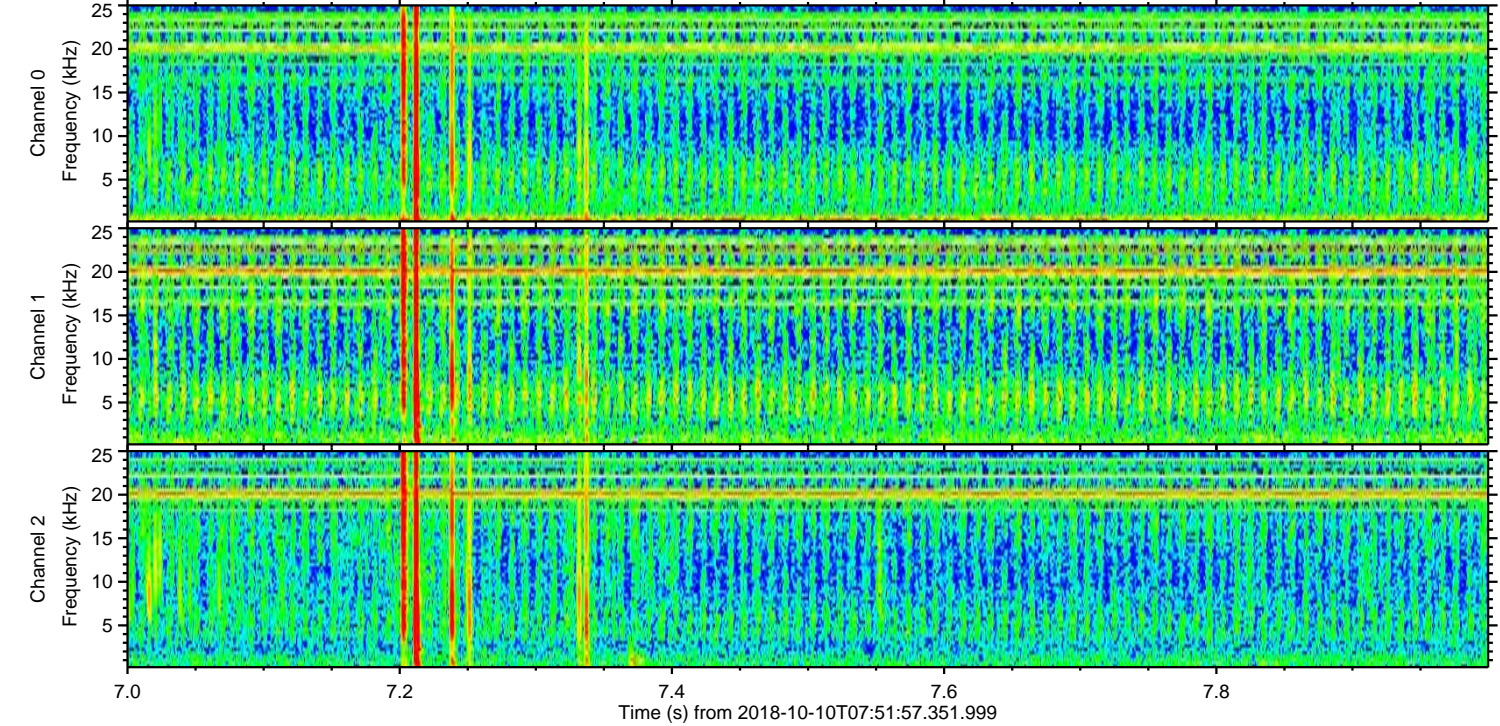
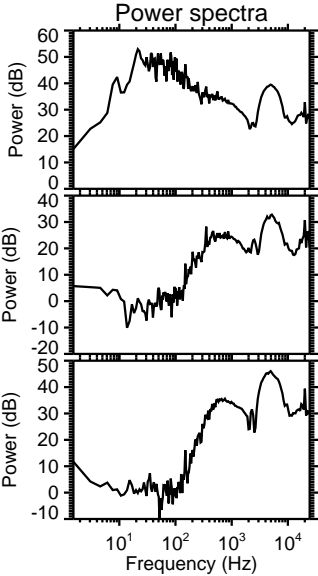
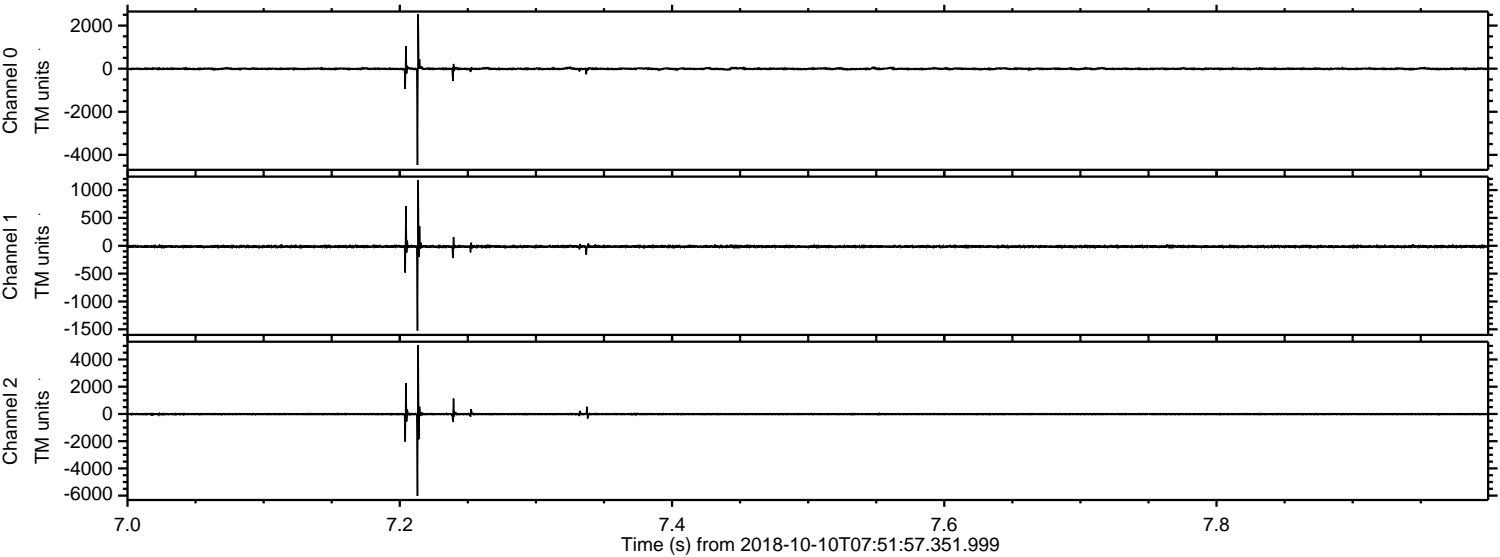
Processed Wed Oct 10 10:00:32 2018 by ELM ver.2012-10-06 from 001__elm20181010_075156__dat00.bin



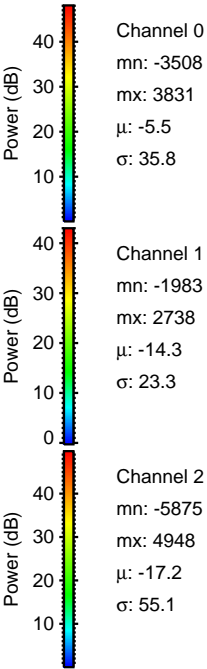
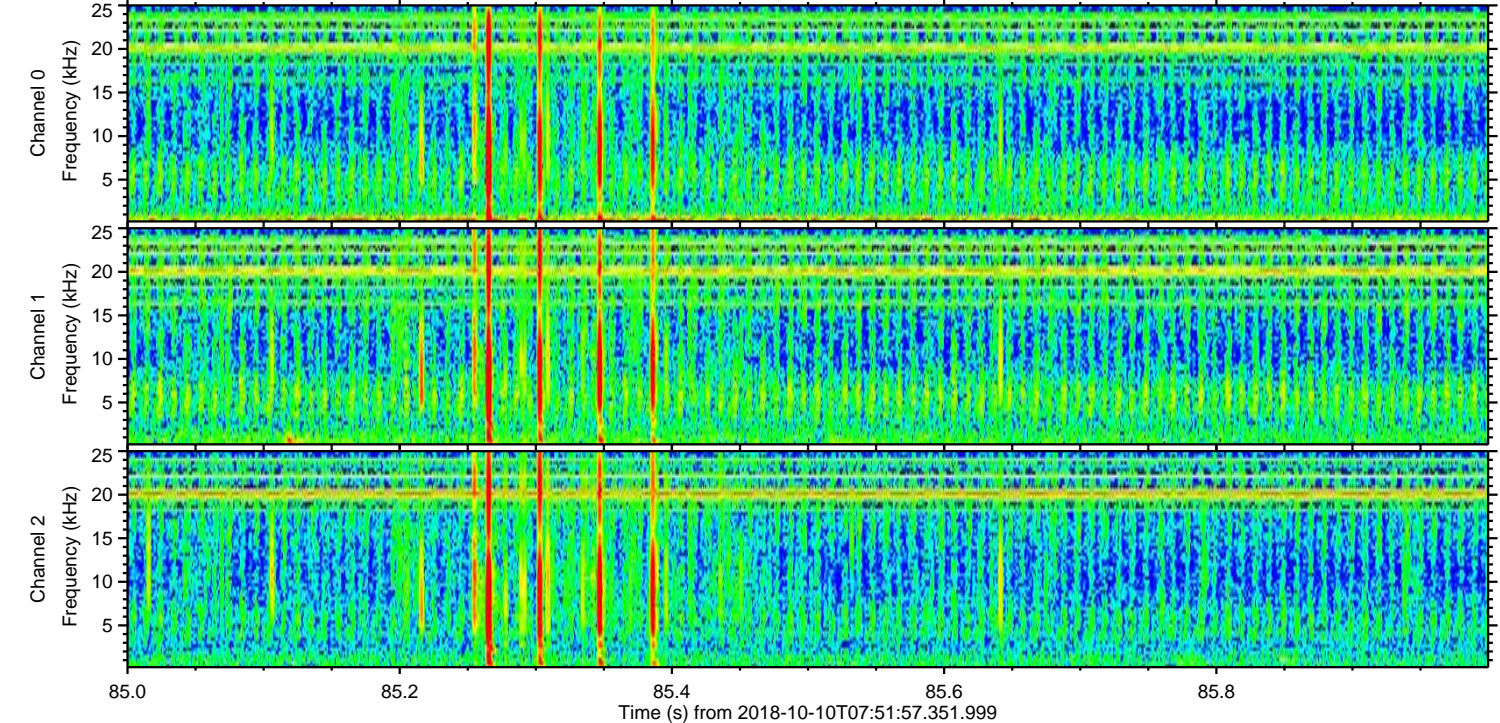
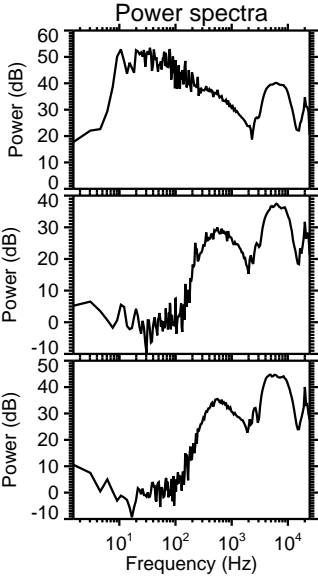
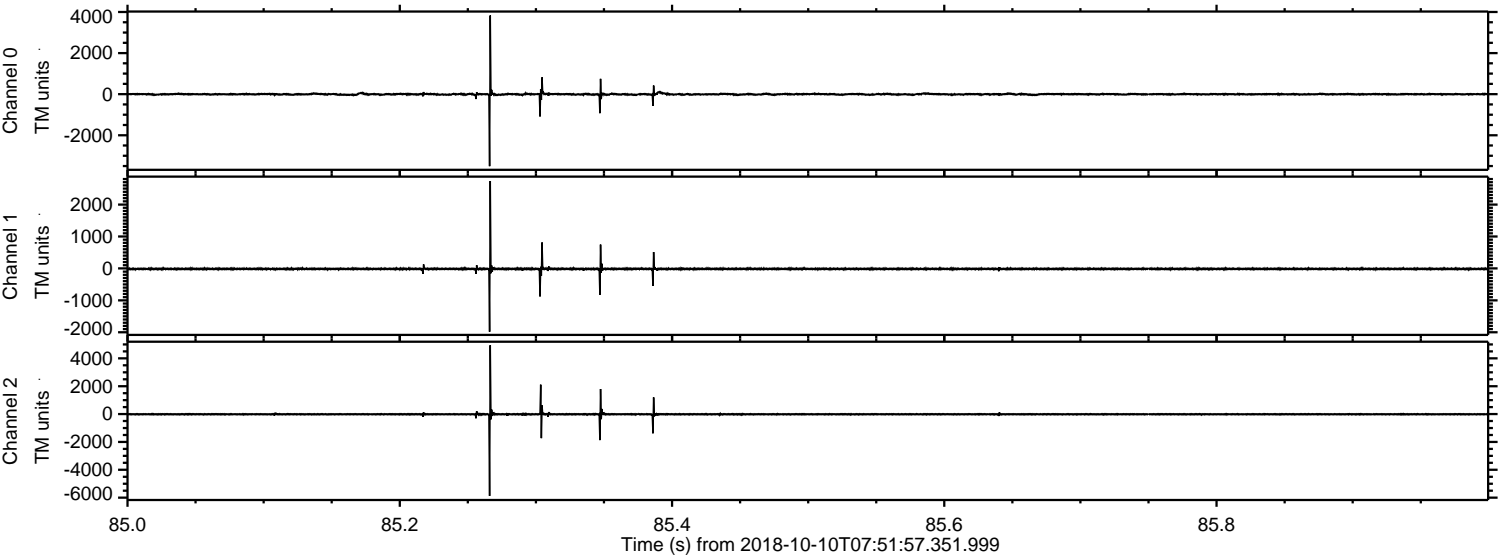
Processed Wed Oct 10 10:00:33 2018 by ELM ver.2012-10-06 from 001__elm20181010_075156__dat00.bin



Processed Wed Oct 10 10:00:34 2018 by ELM ver.2012-10-06 from 001__elm20181010_075156__dat00.bin

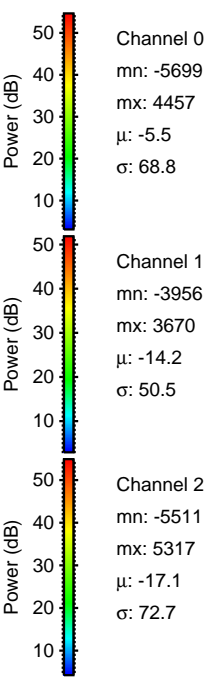
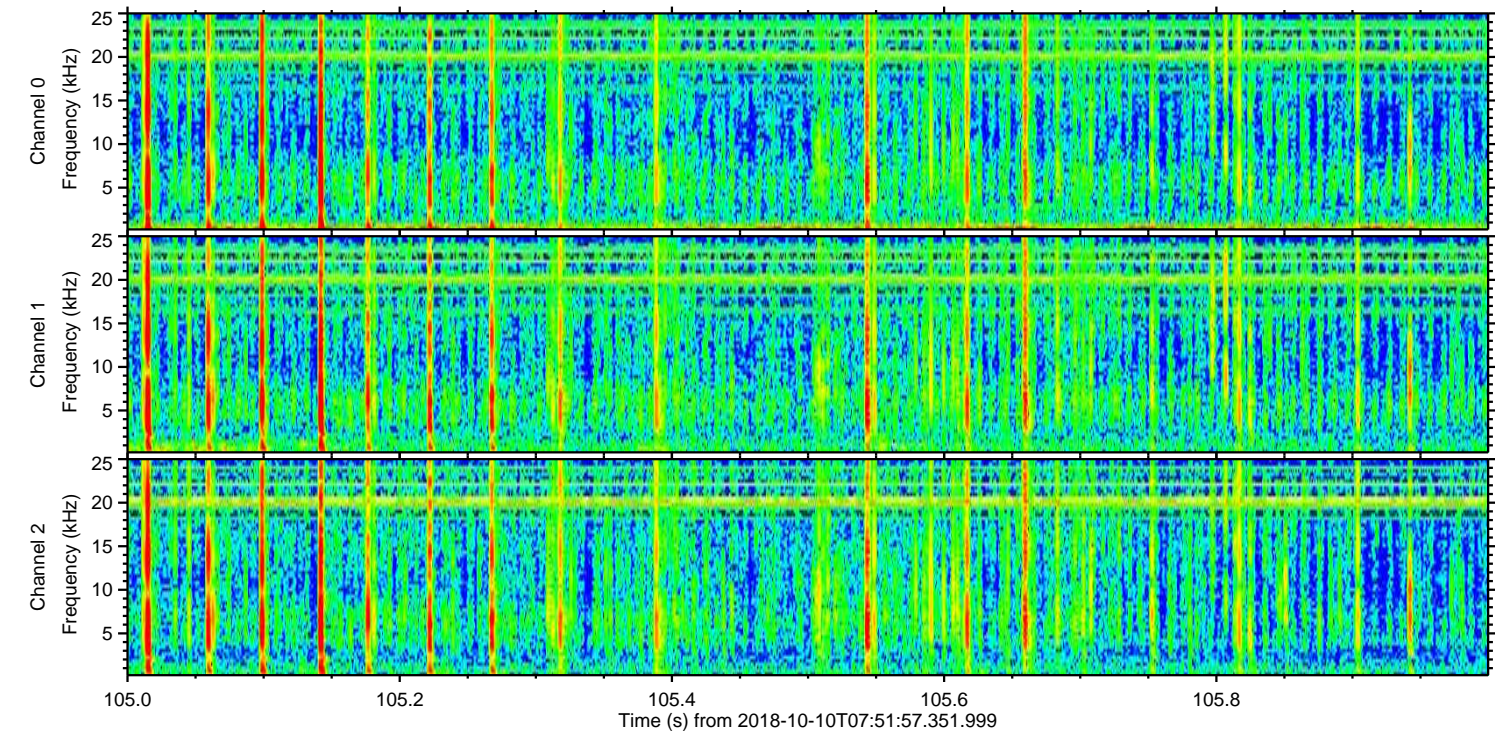
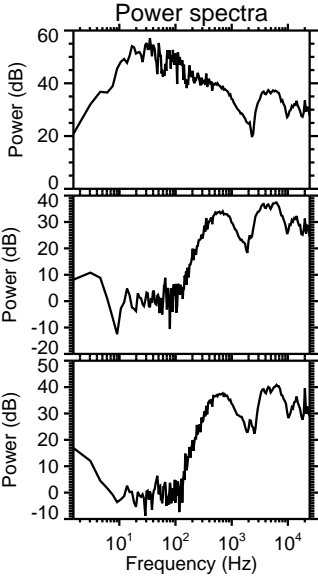
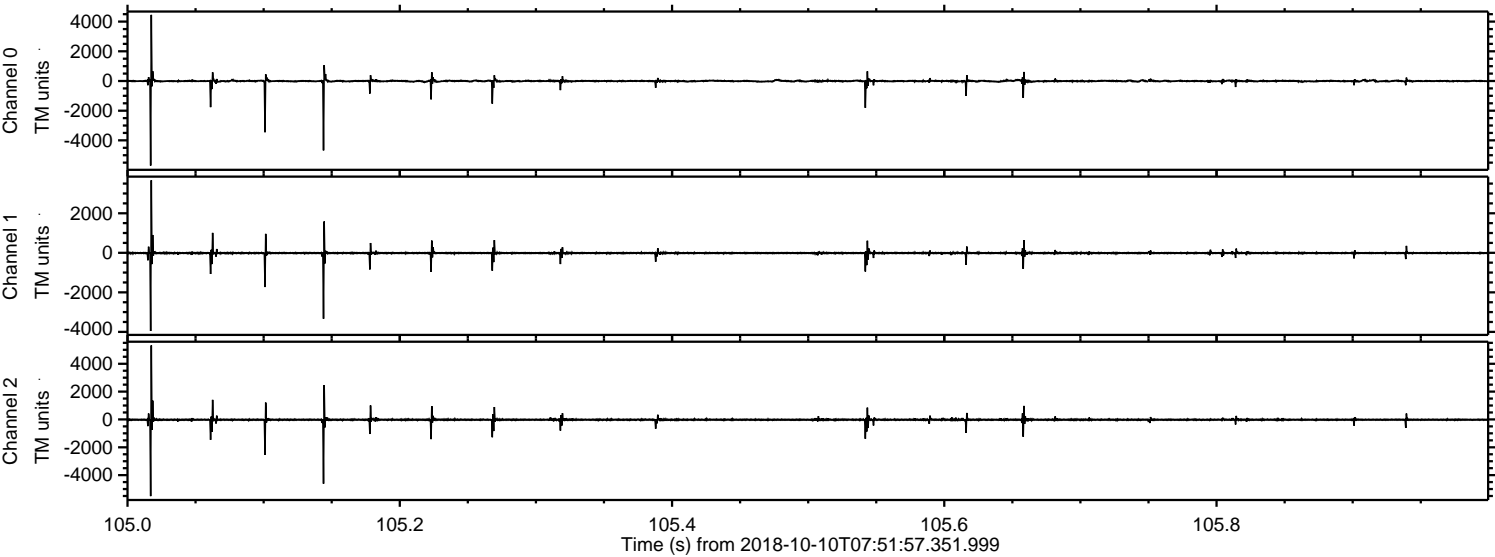


Processed Wed Oct 10 10:00:34 2018 by ELM ver.2012-10-06 from 001__elm20181010_075156__dat00.bin

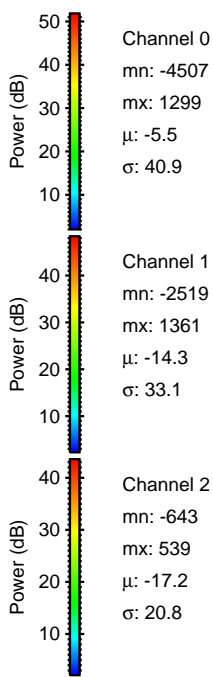
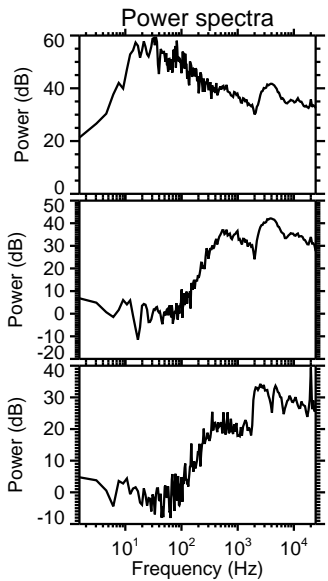
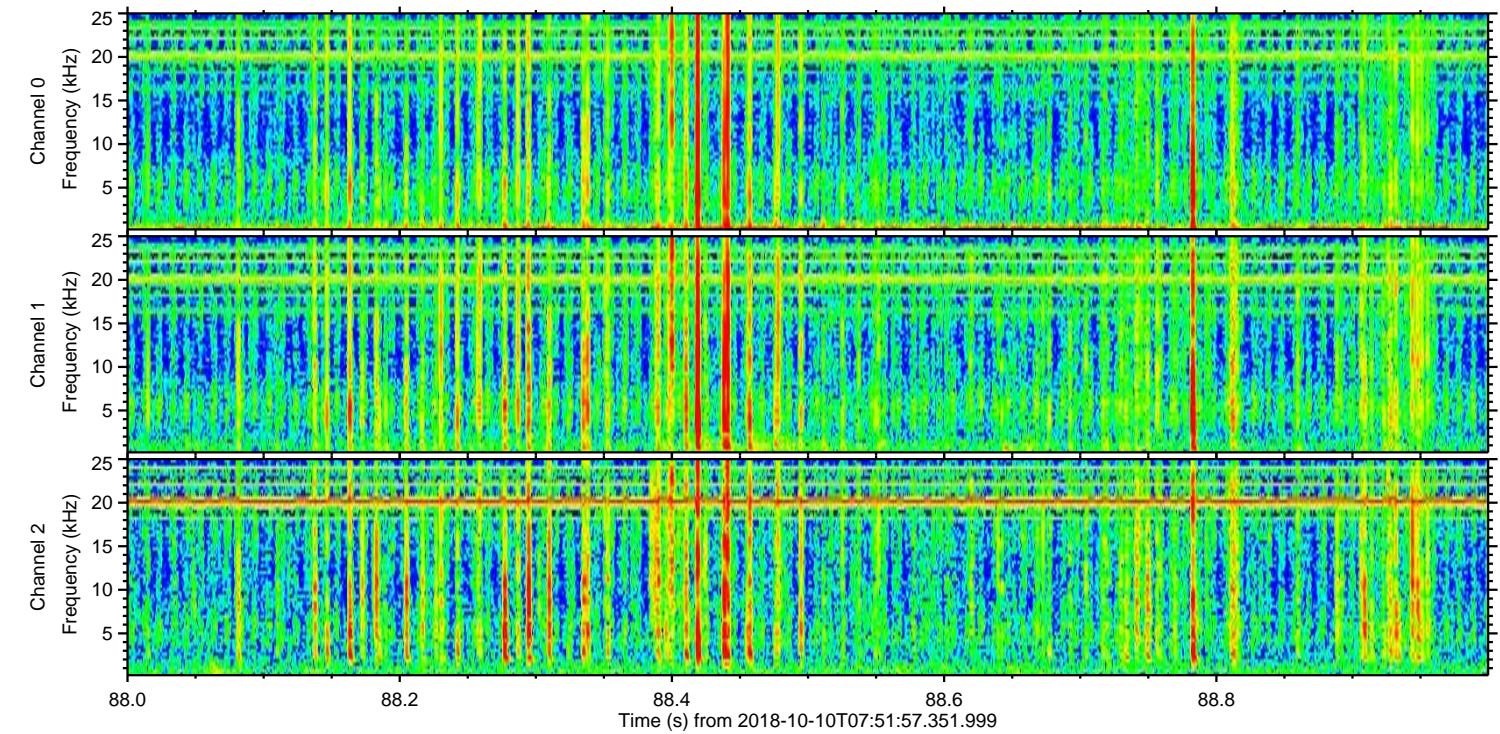
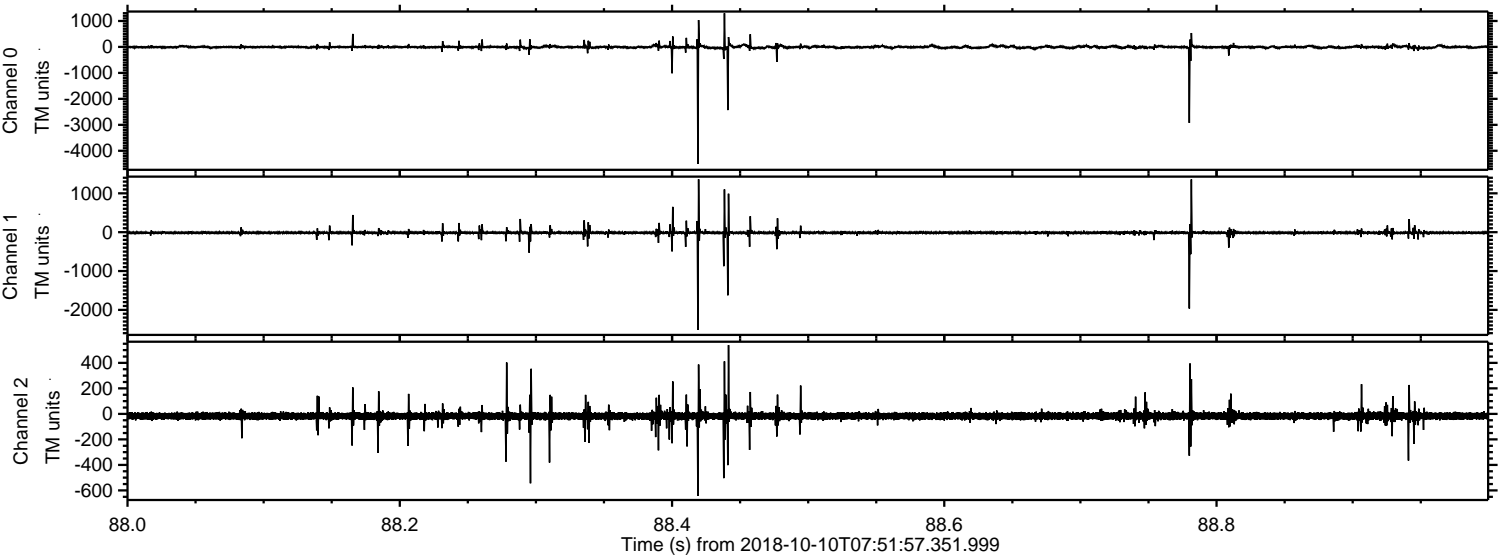


ELMAVAN 3D WAVEFORMS (Measured data sampled at 50 kHz) 51000 packets of 144 samples from 2018-10-10T07:51:57.351.999. Part 106/147

Processed Wed Oct 10 10:00:35 2018 by ELM ver.2012-10-06 from 001__elm20181010_075156__dat00.bin



Processed Wed Oct 10 10:00:36 2018 by ELM ver.2012-10-06 from 001__elm20181010_075156__dat00.bin



Channel 0
mn: -4507
mx: 1299
 μ : -5.5
 σ : 40.9

Channel 1
mn: -2519
mx: 1361
 μ : -14.3
 σ : 33.1

Channel 2
mn: -643
mx: 539
 μ : -17.2
 σ : 20.8

