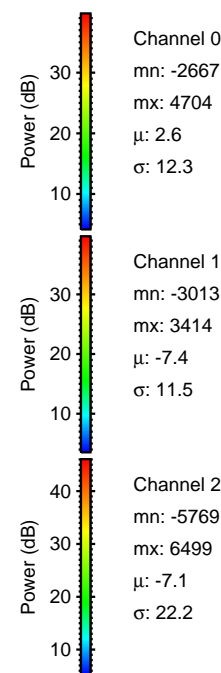
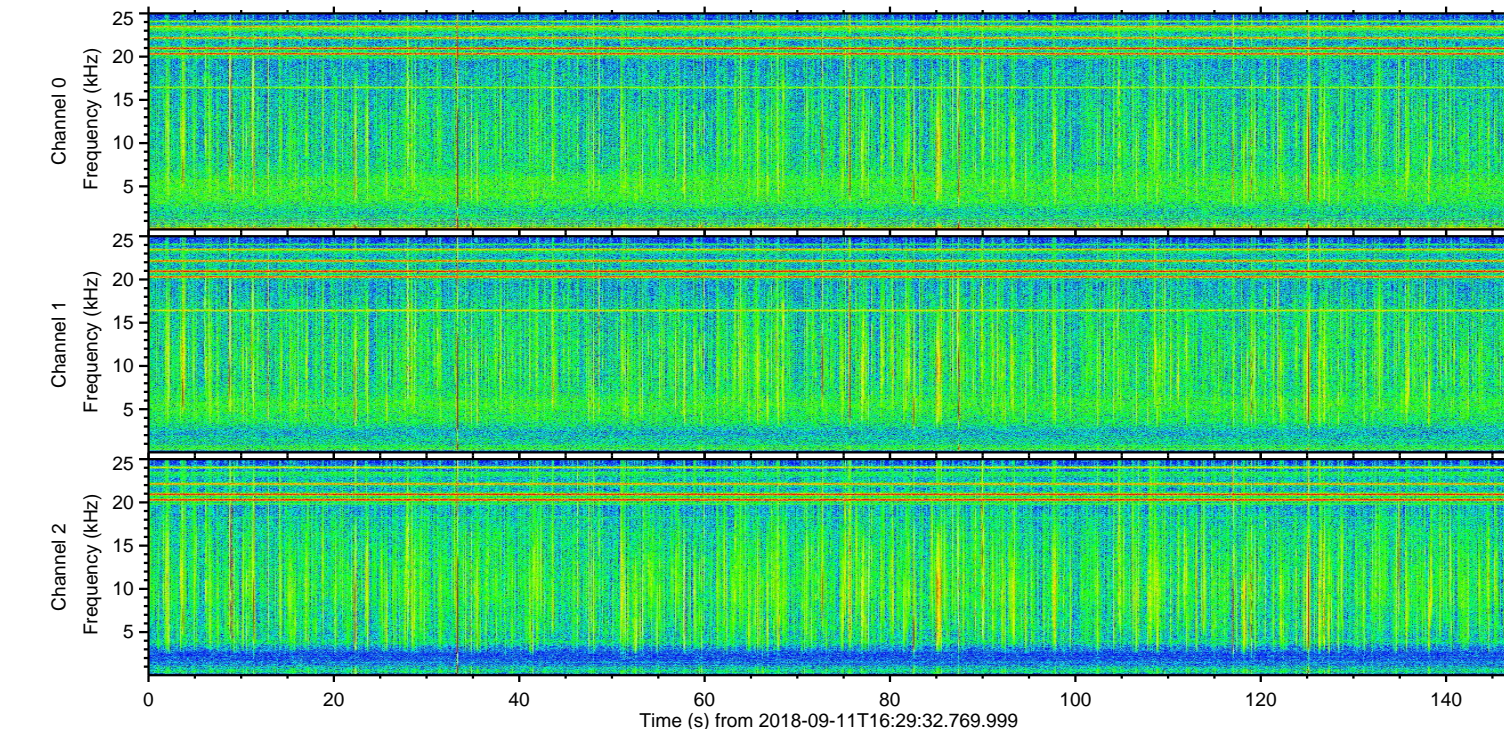
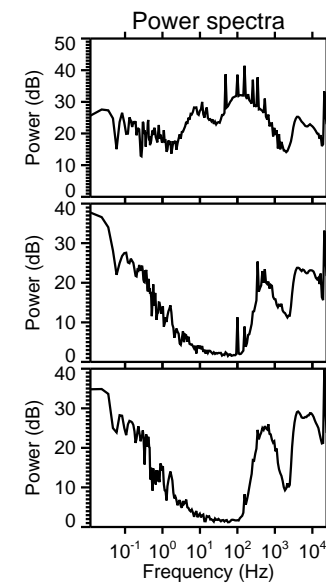
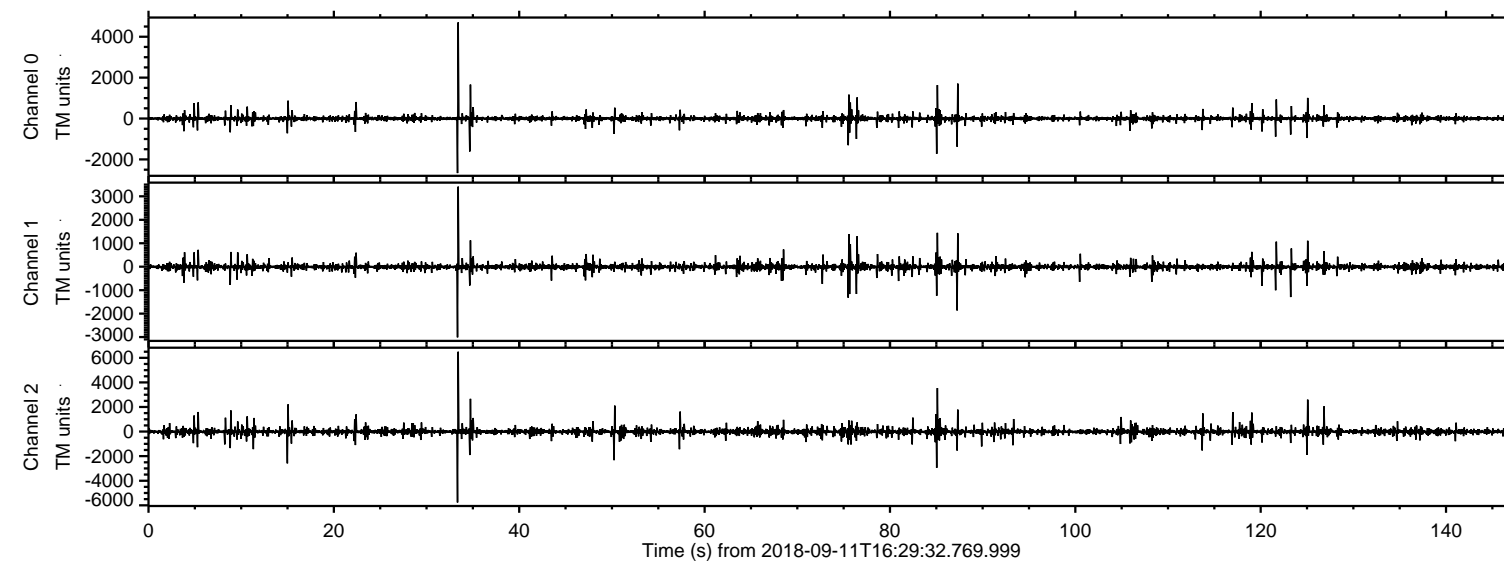
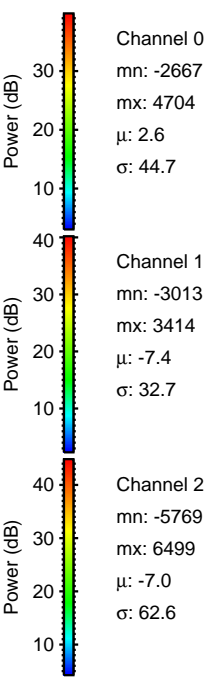
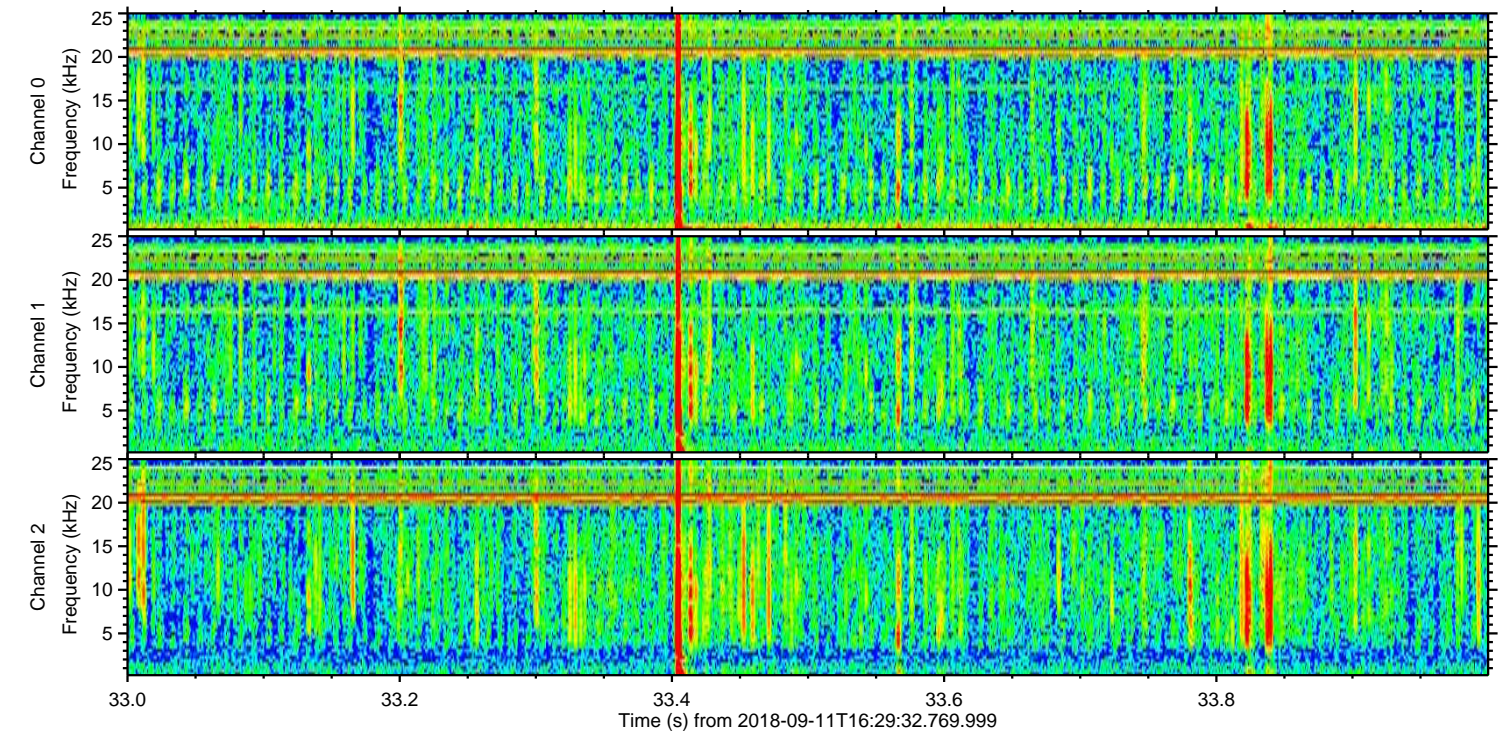
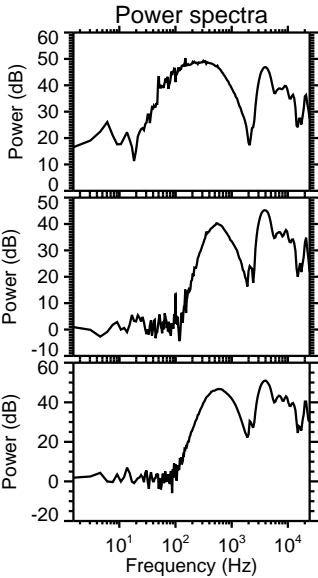
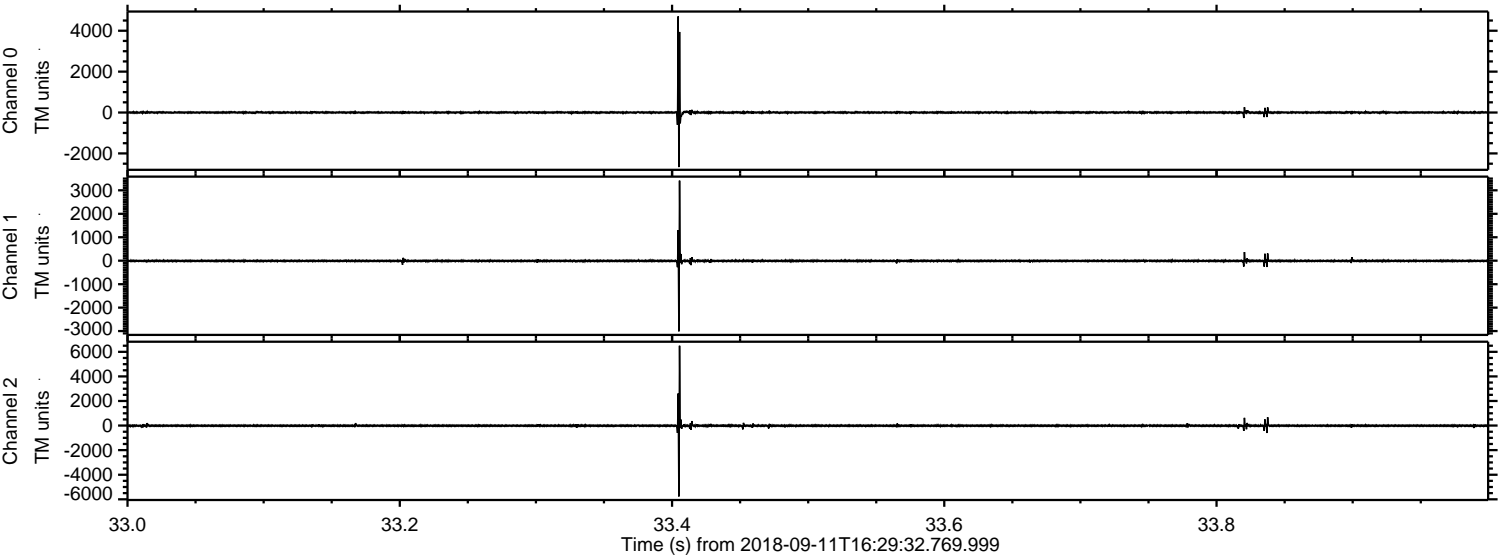


ELMAVAN 3D WAVEFORMS (Measured data sampled at 50 kHz) 51000 packets of 144 samples from 2018-09-11T16:29:32.769.999.

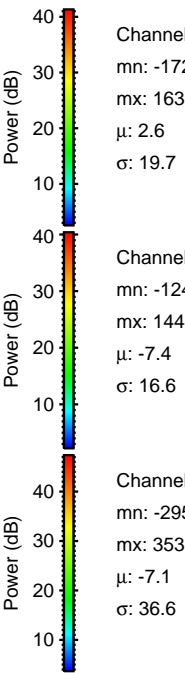
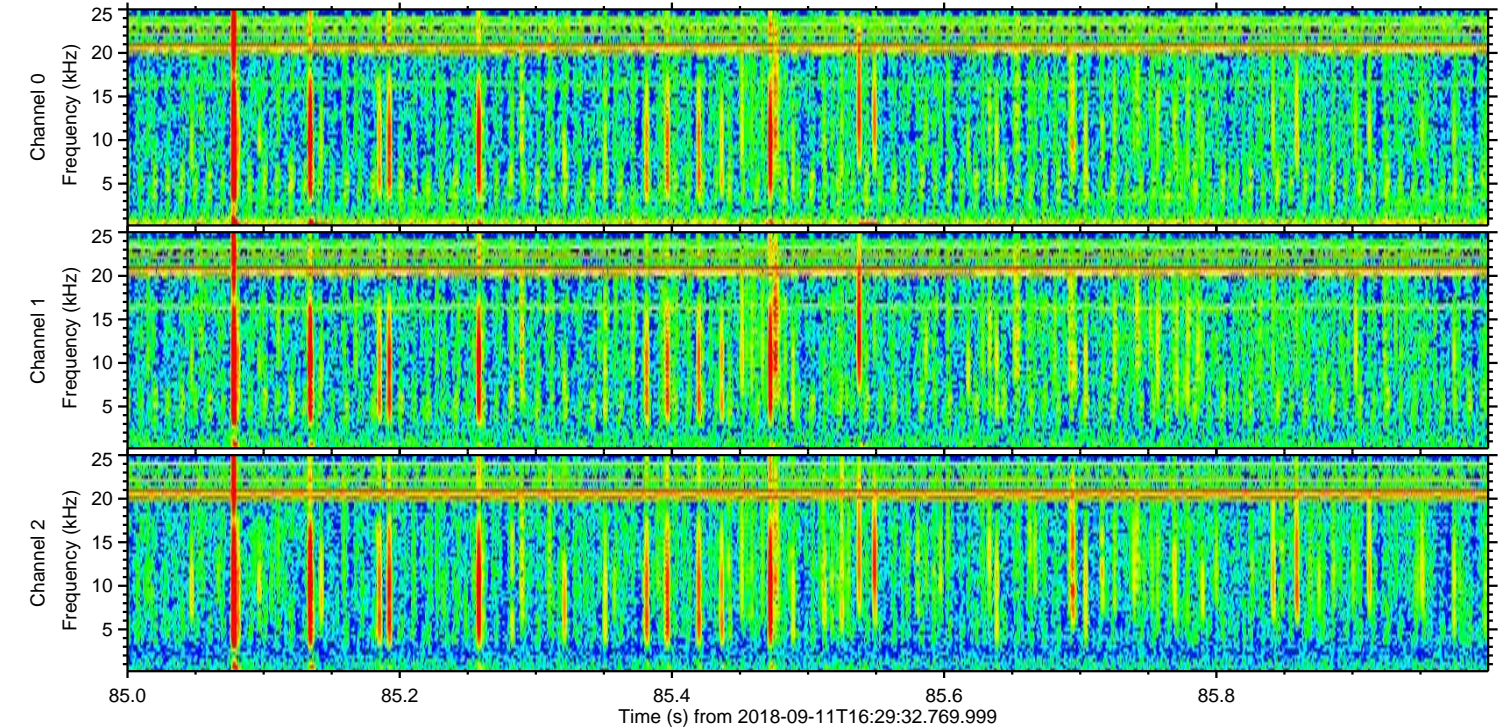
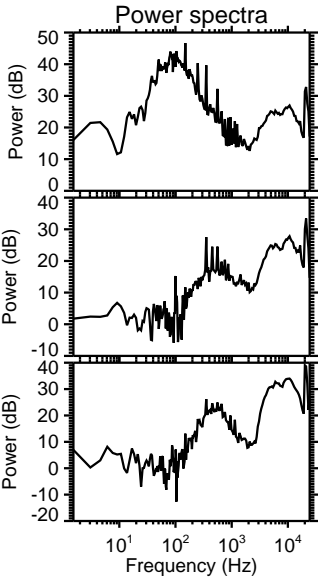
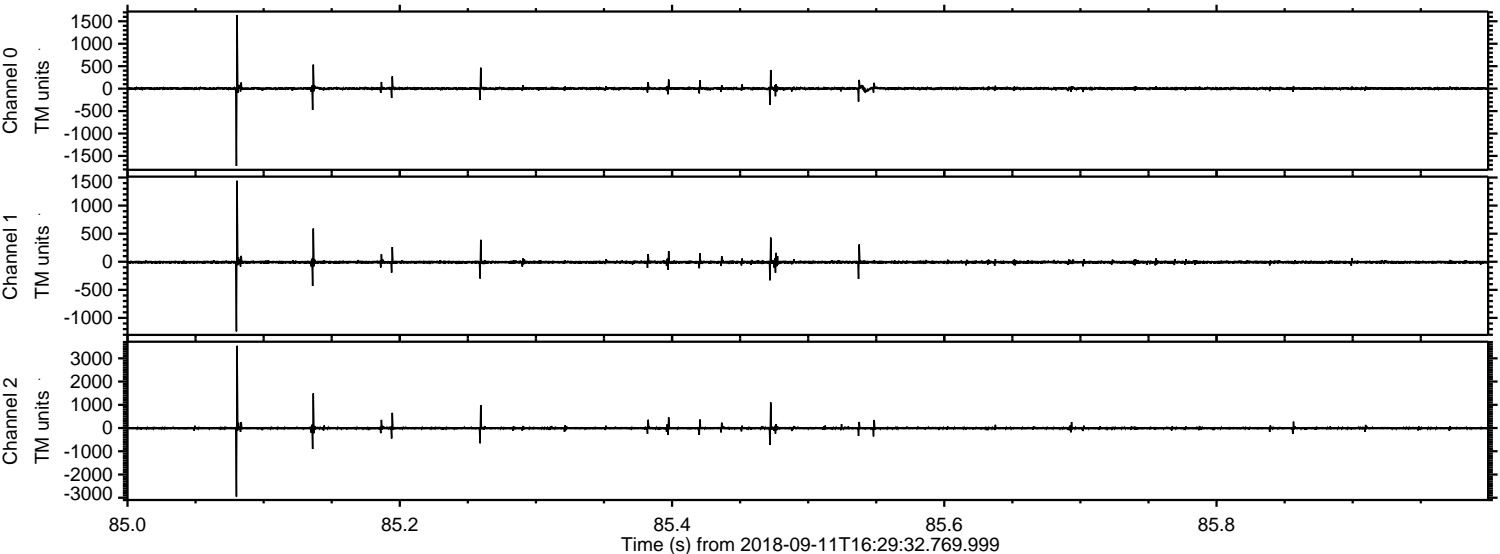
Processed Tue Sep 11 18:38:01 2018 by ELM ver.2012-10-06 from 001__elm20180911_162931__dat00.bin



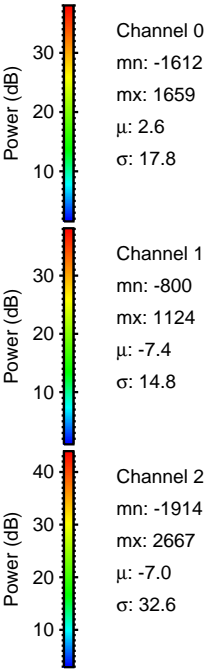
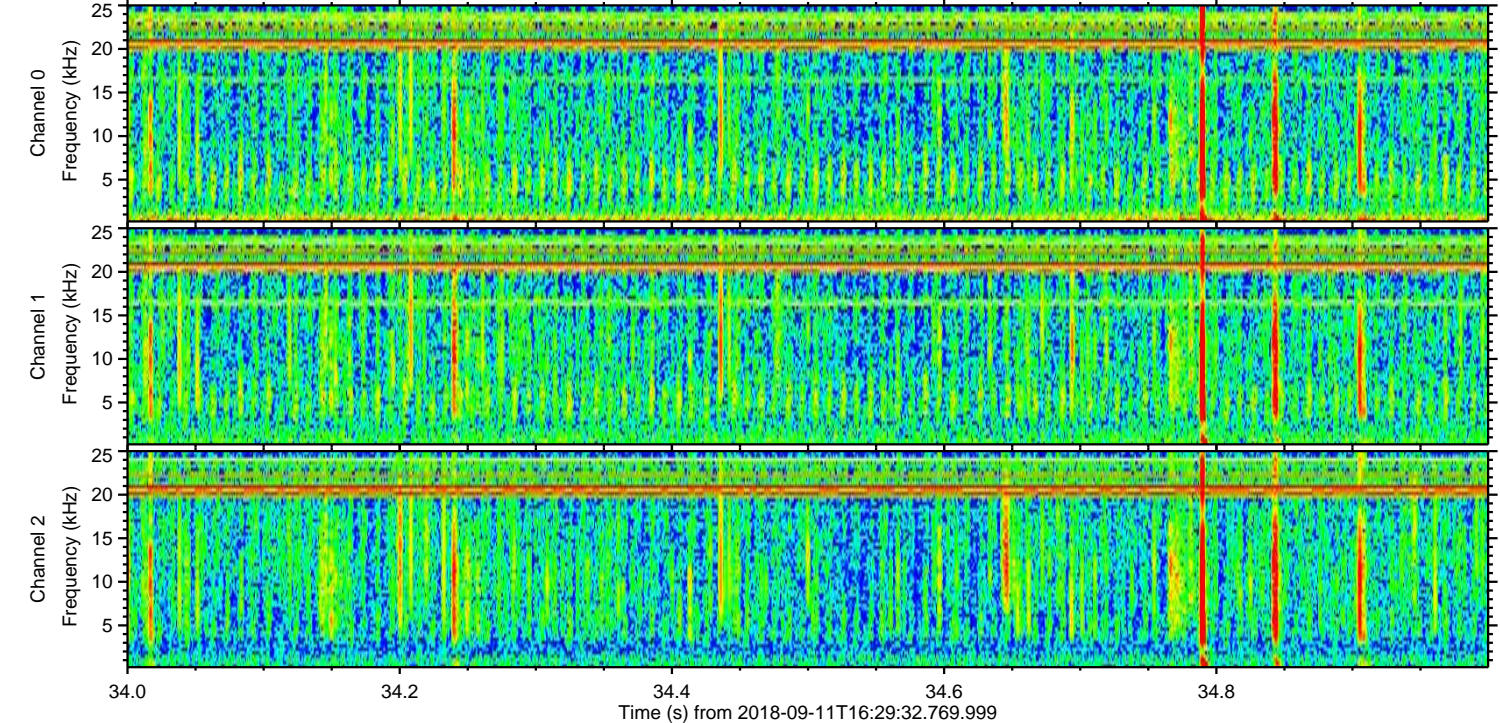
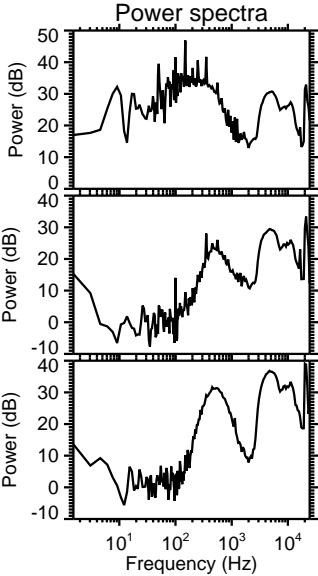
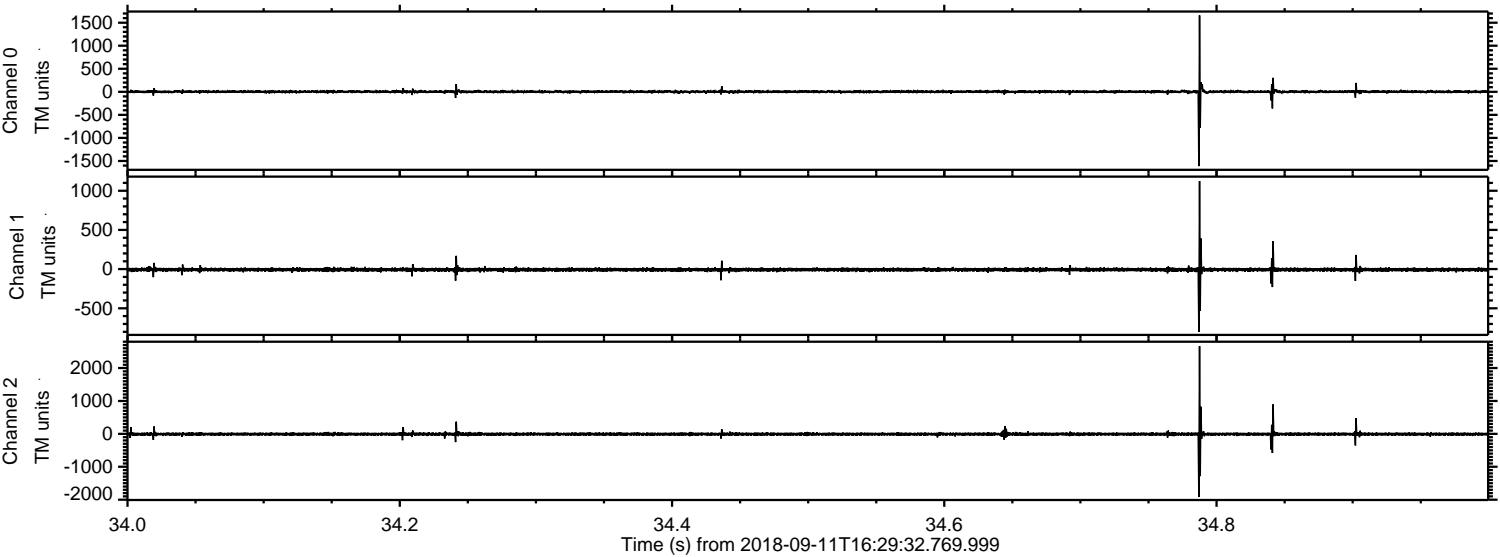
Processed Tue Sep 11 18:38:08 2018 by ELM ver.2012-10-06 from 001__elm20180911_162931__dat00.bin



Processed Tue Sep 11 18:38:09 2018 by ELM ver.2012-10-06 from 001__elm20180911_162931__dat00.bin

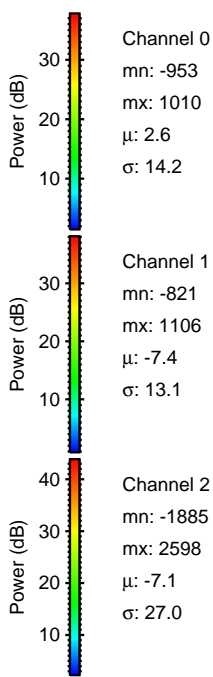
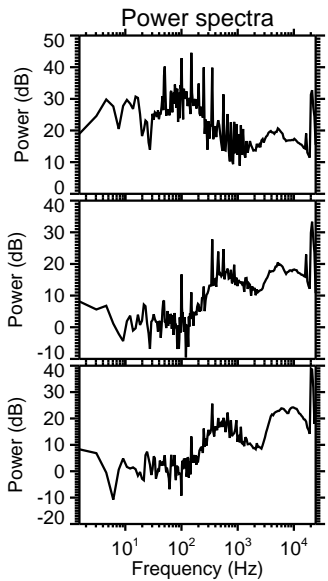
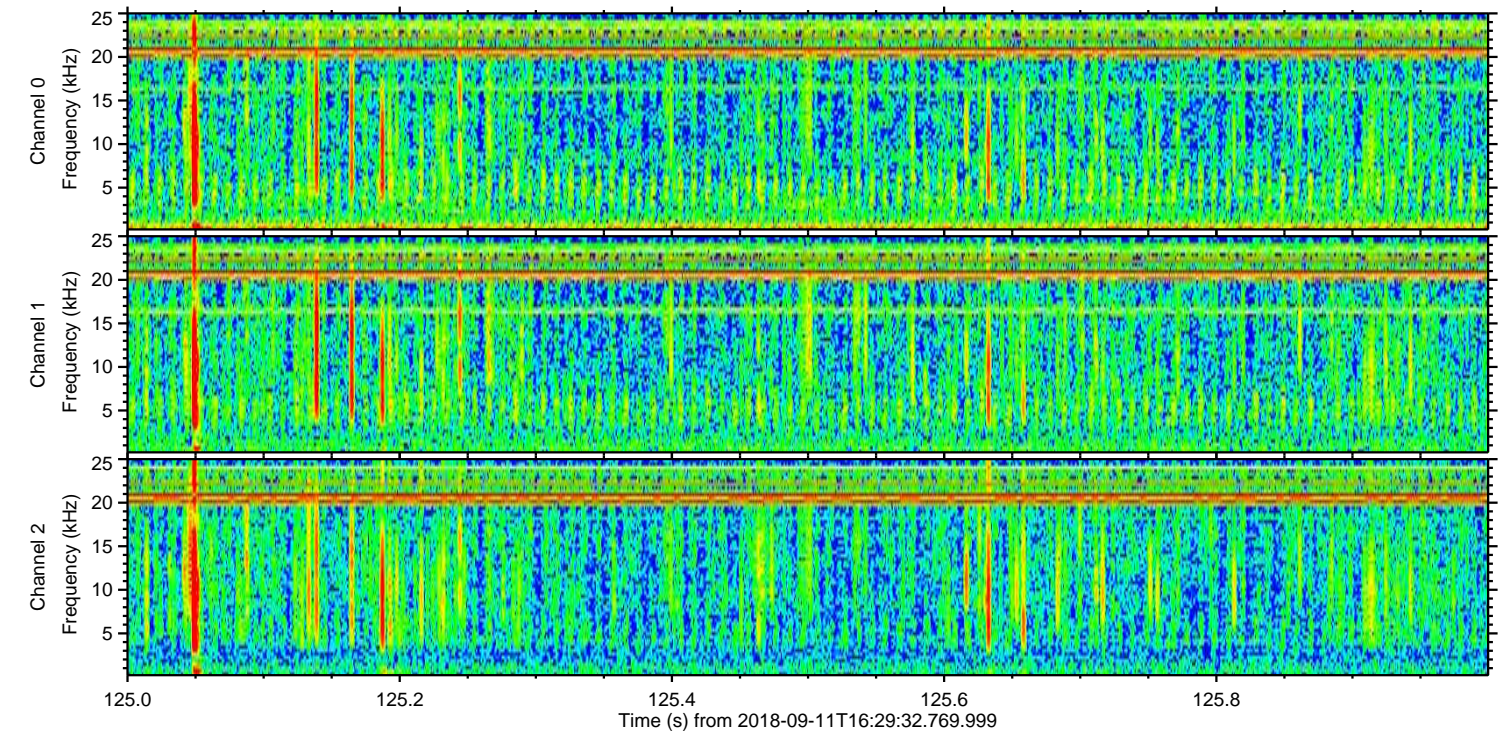
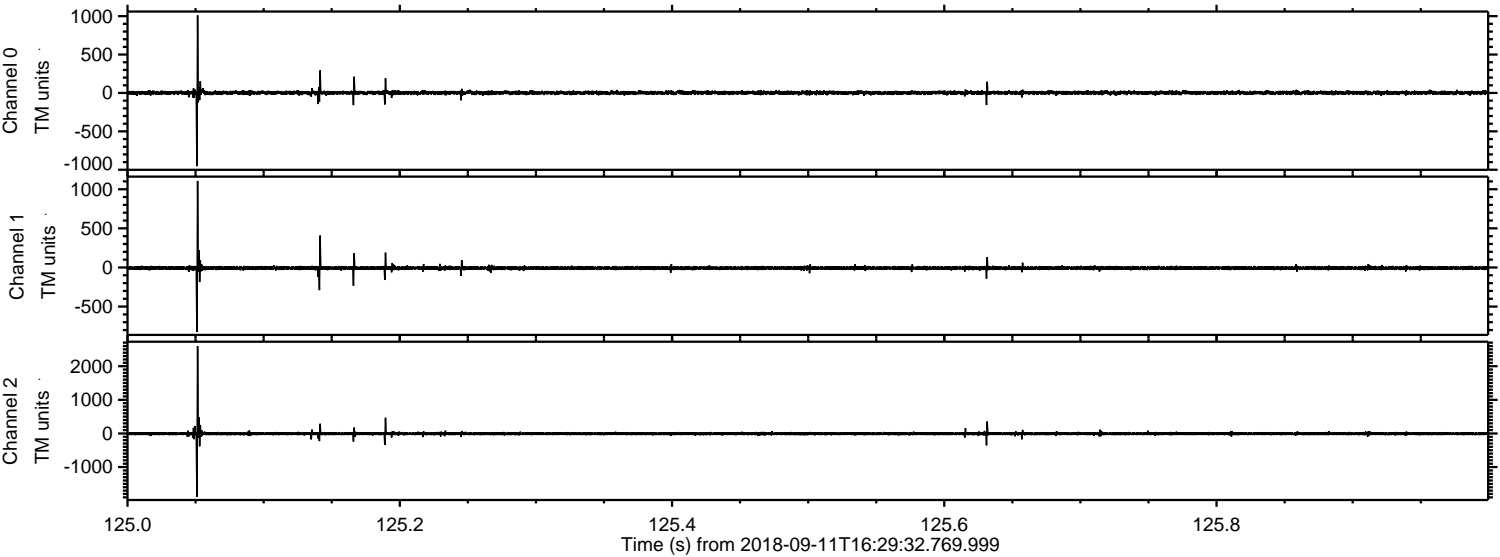


Processed Tue Sep 11 18:38:09 2018 by ELM ver.2012-10-06 from 001__elm20180911_162931__dat00.bin

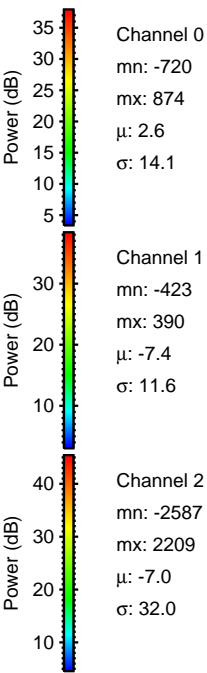
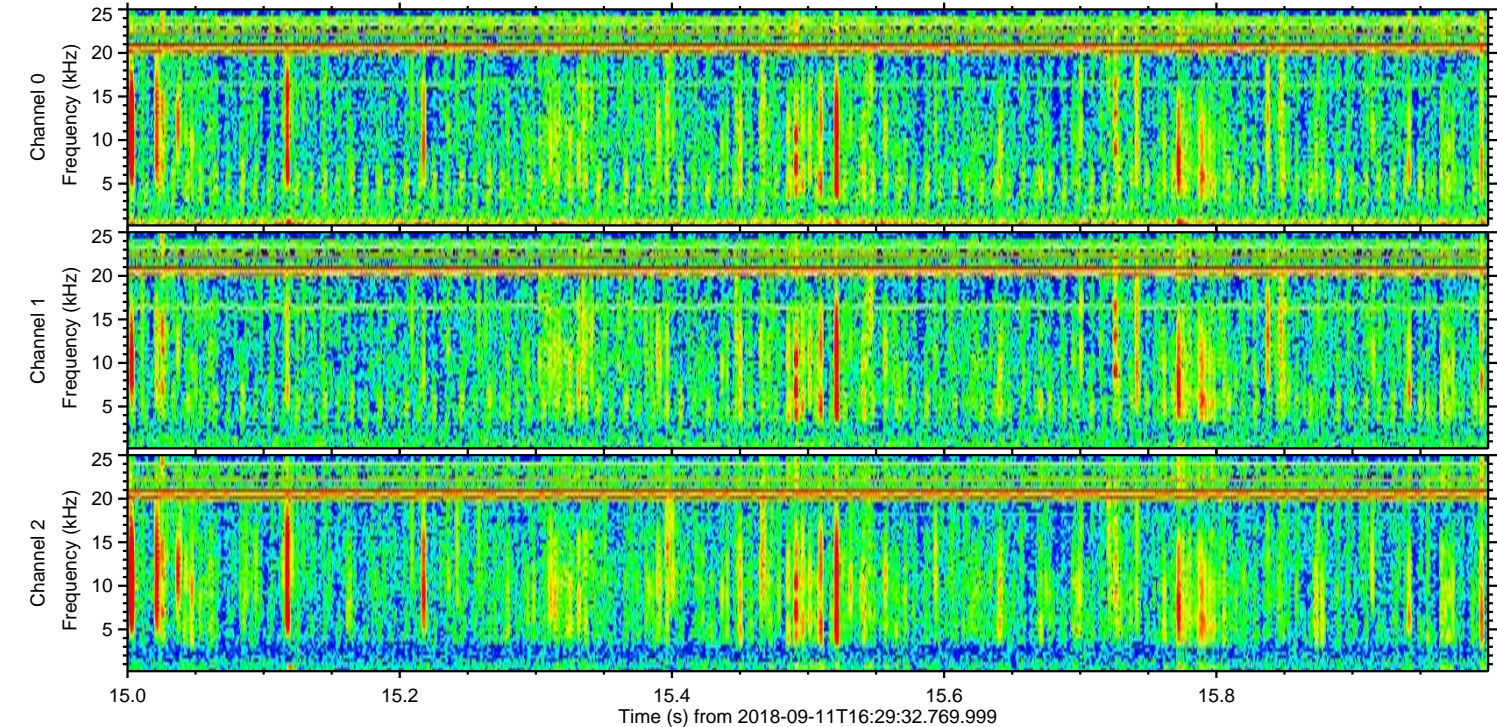
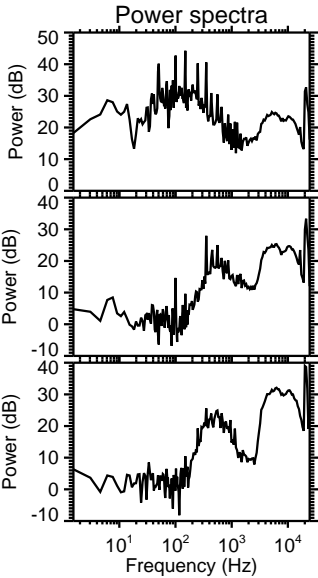
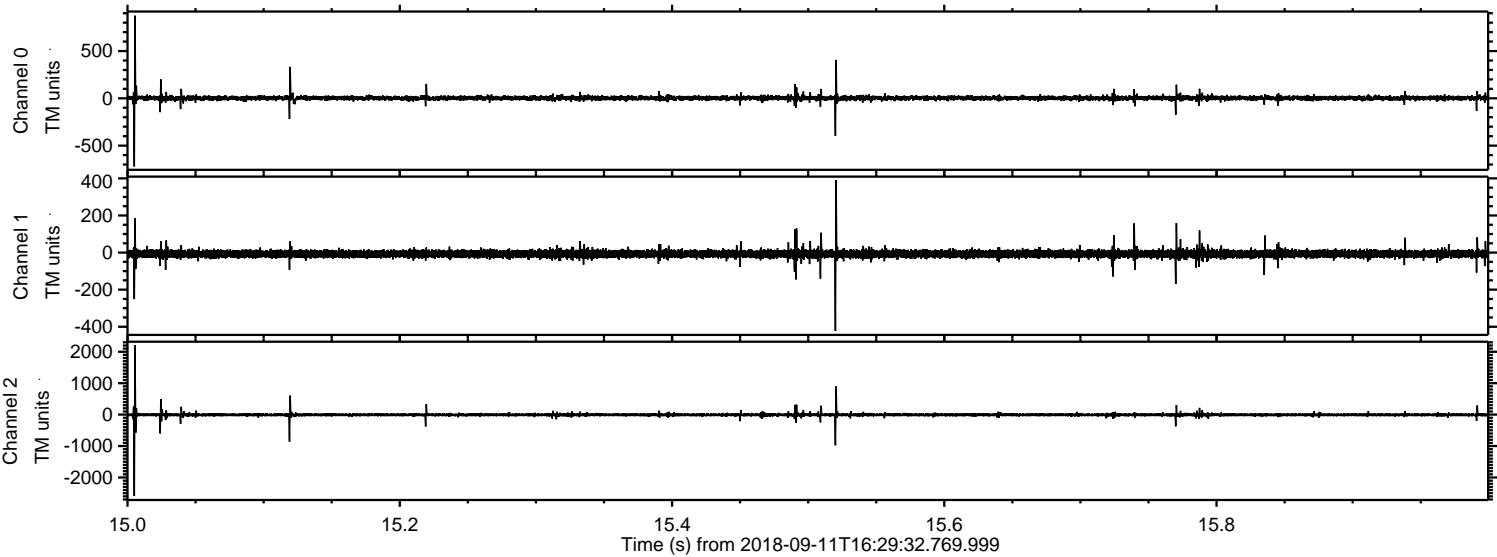


ELMAVAN 3D WAVEFORMS (Measured data sampled at 50 kHz) 51000 packets of 144 samples from 2018-09-11T16:29:32.769.999. Part 126/147

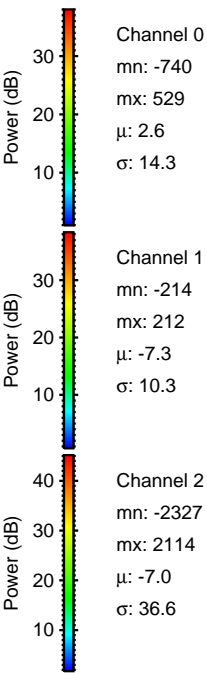
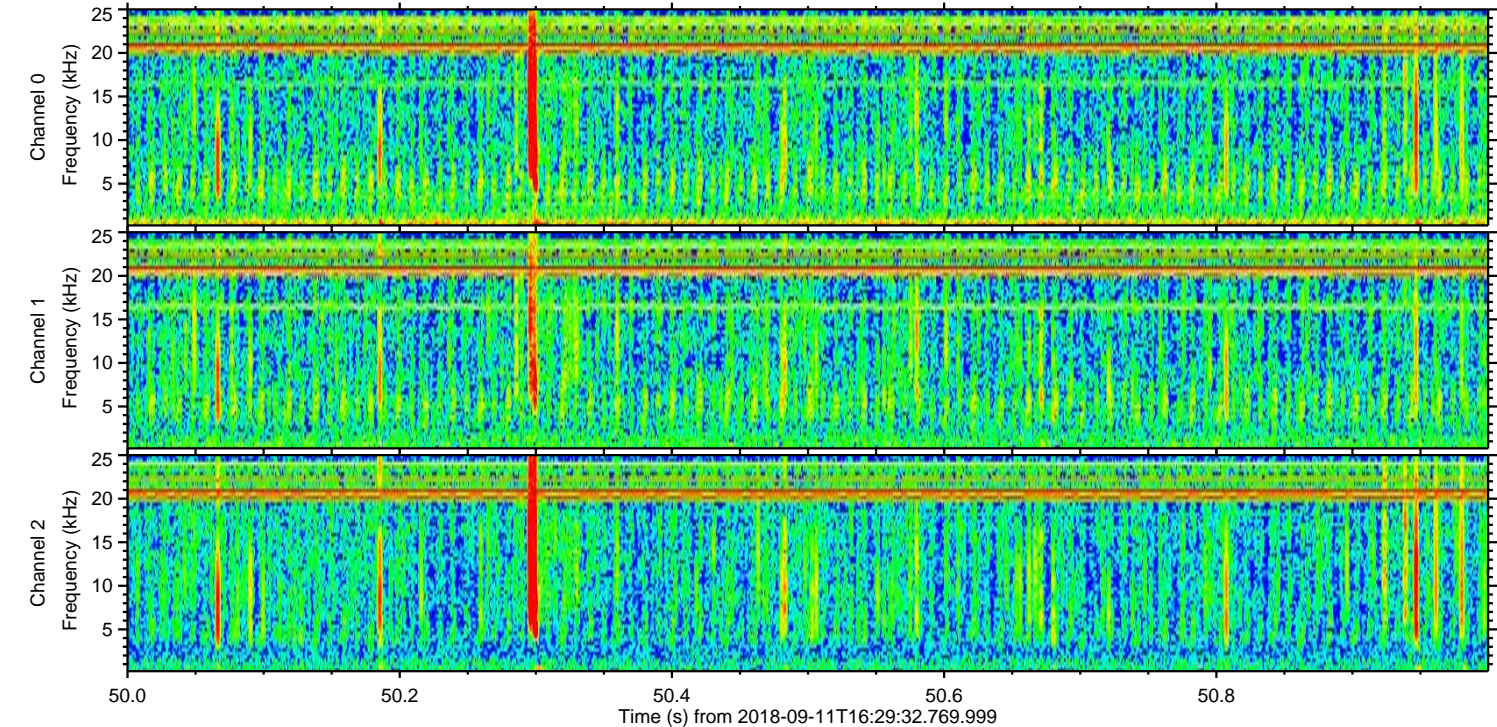
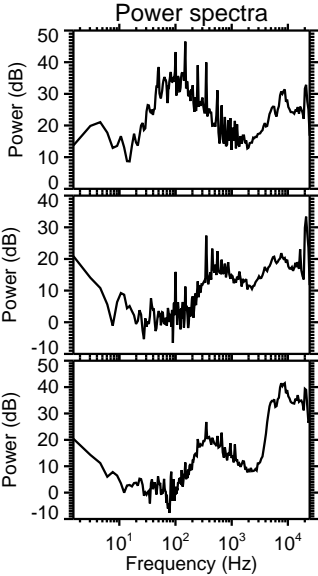
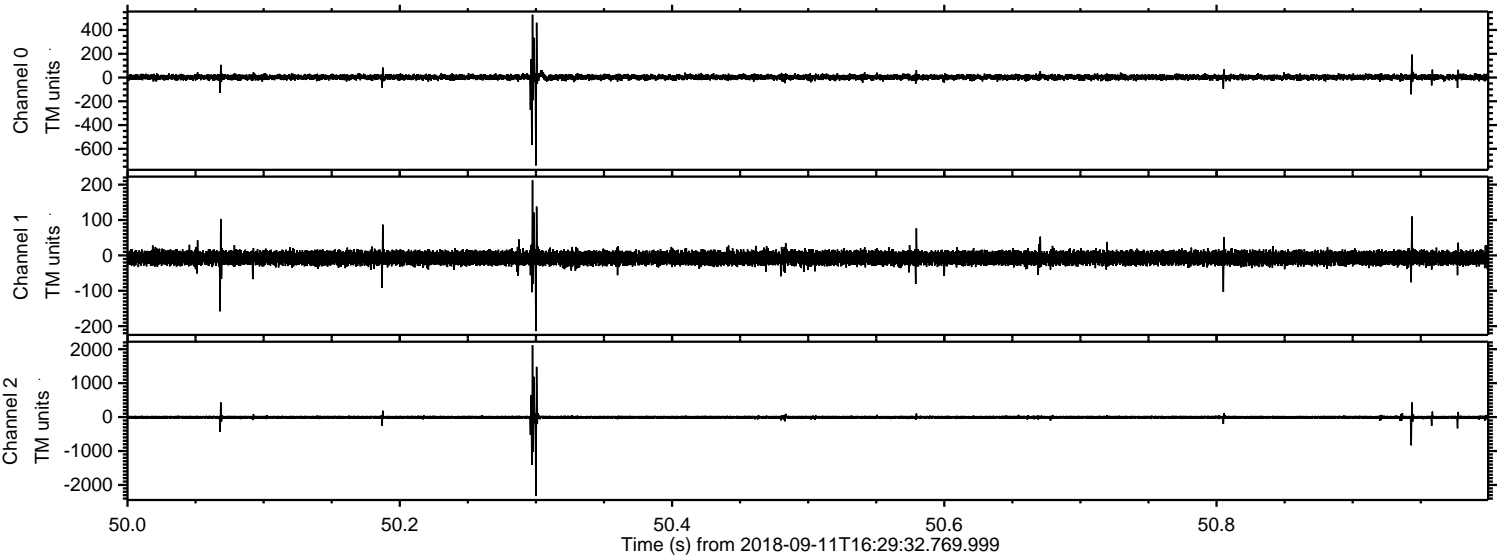
Processed Tue Sep 11 18:38:10 2018 by ELM ver.2012-10-06 from 001__elm20180911_162931__dat00.bin



Processed Tue Sep 11 18:38:11 2018 by ELM ver.2012-10-06 from 001__elm20180911_162931__dat00.bin

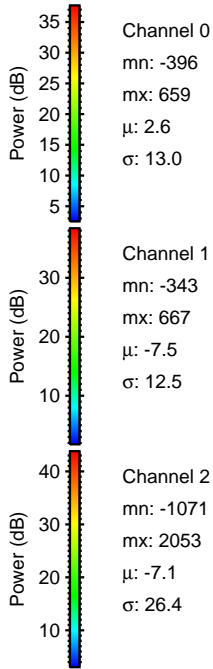
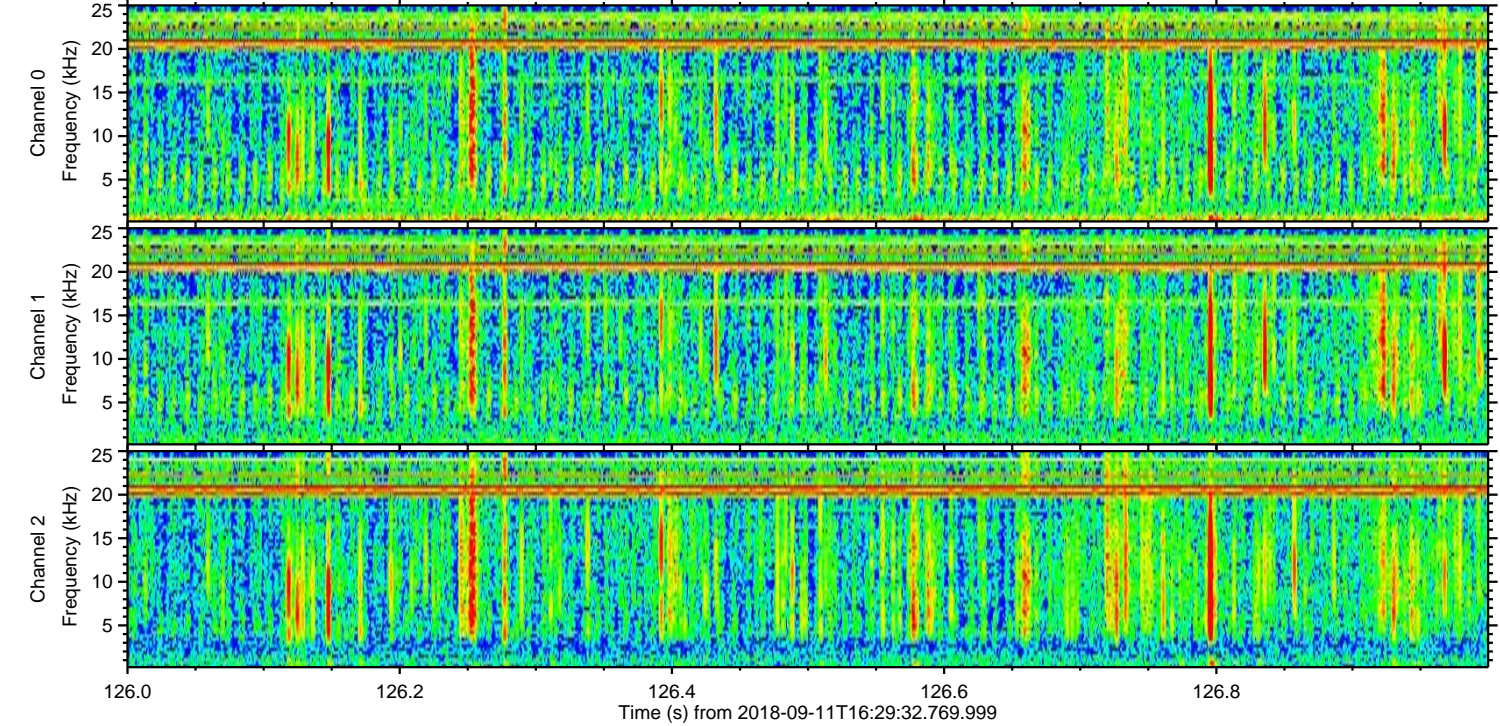
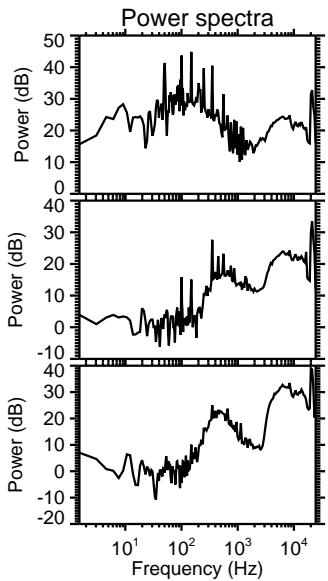
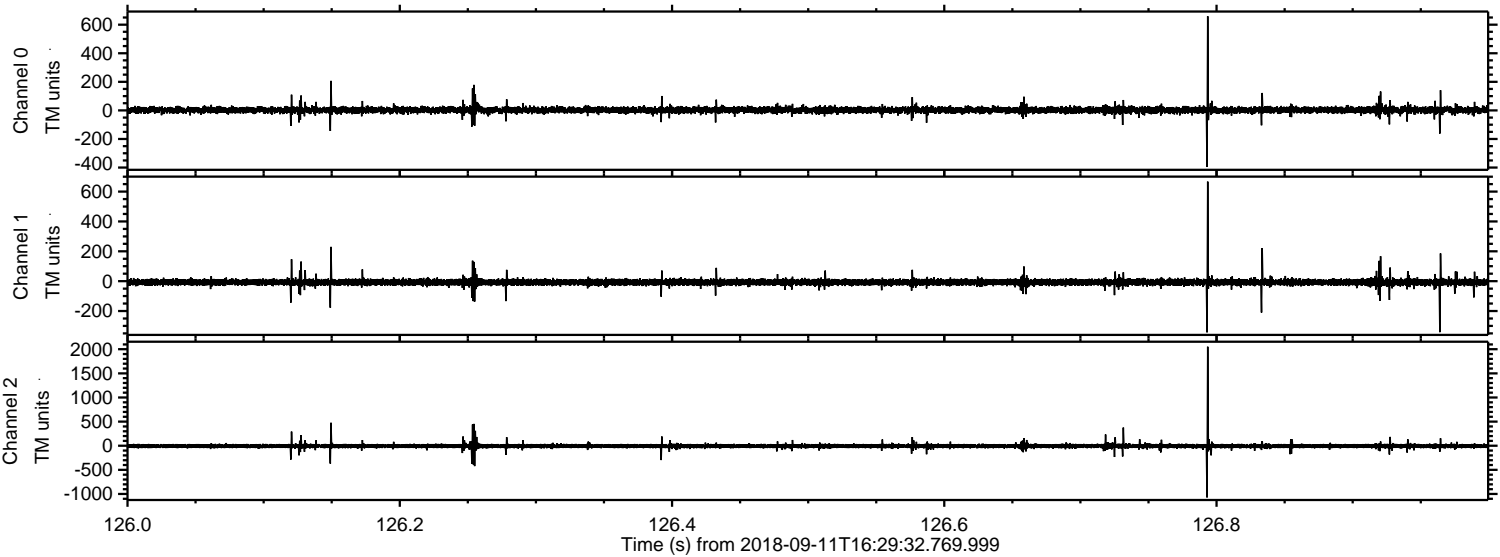


Processed Tue Sep 11 18:38:11 2018 by ELM ver.2012-10-06 from 001__elm20180911_162931__dat00.bin

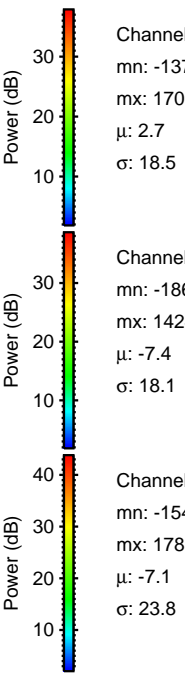
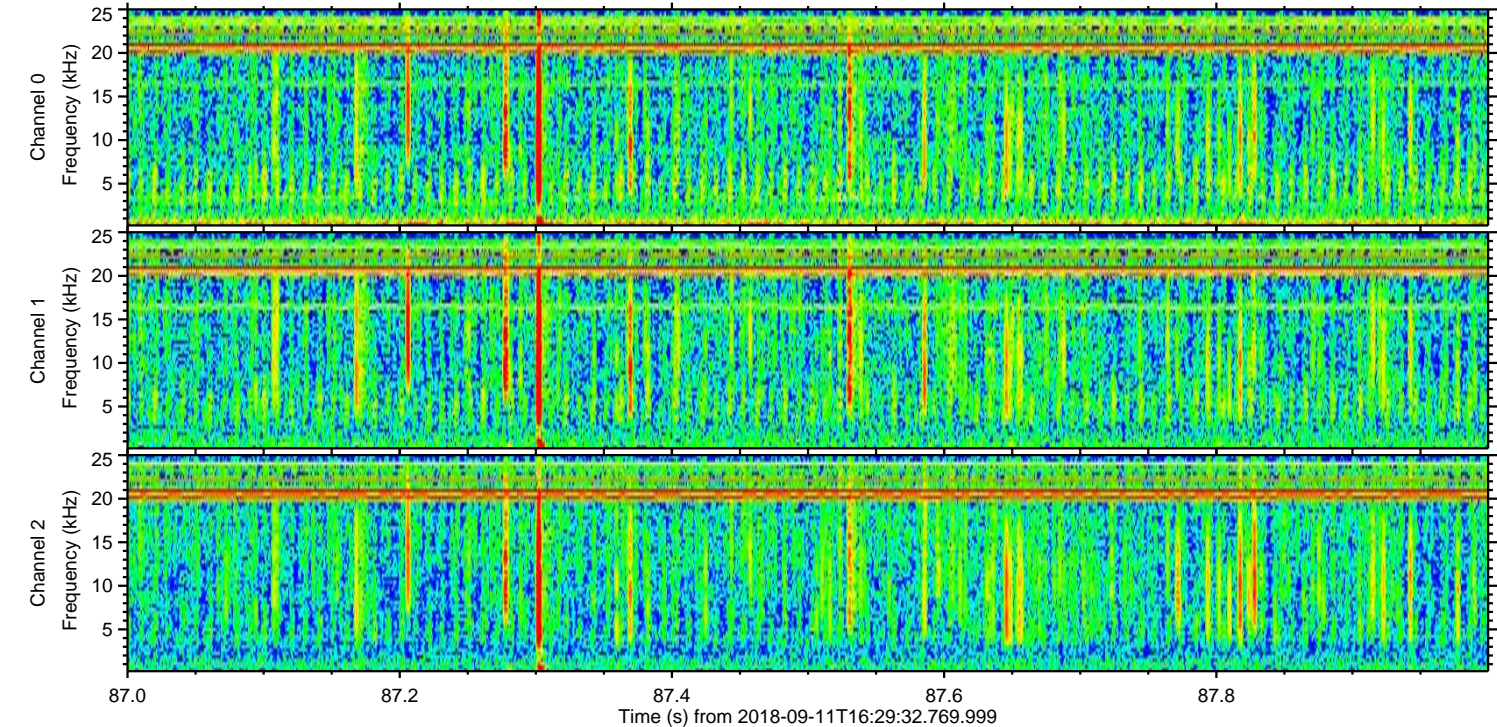
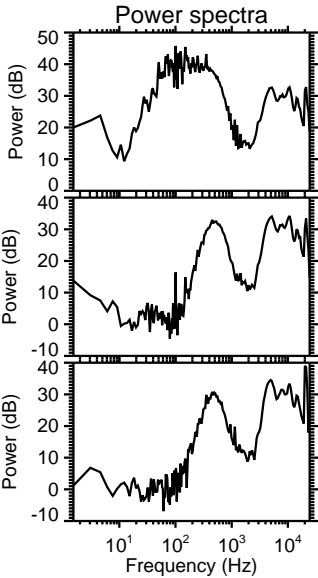
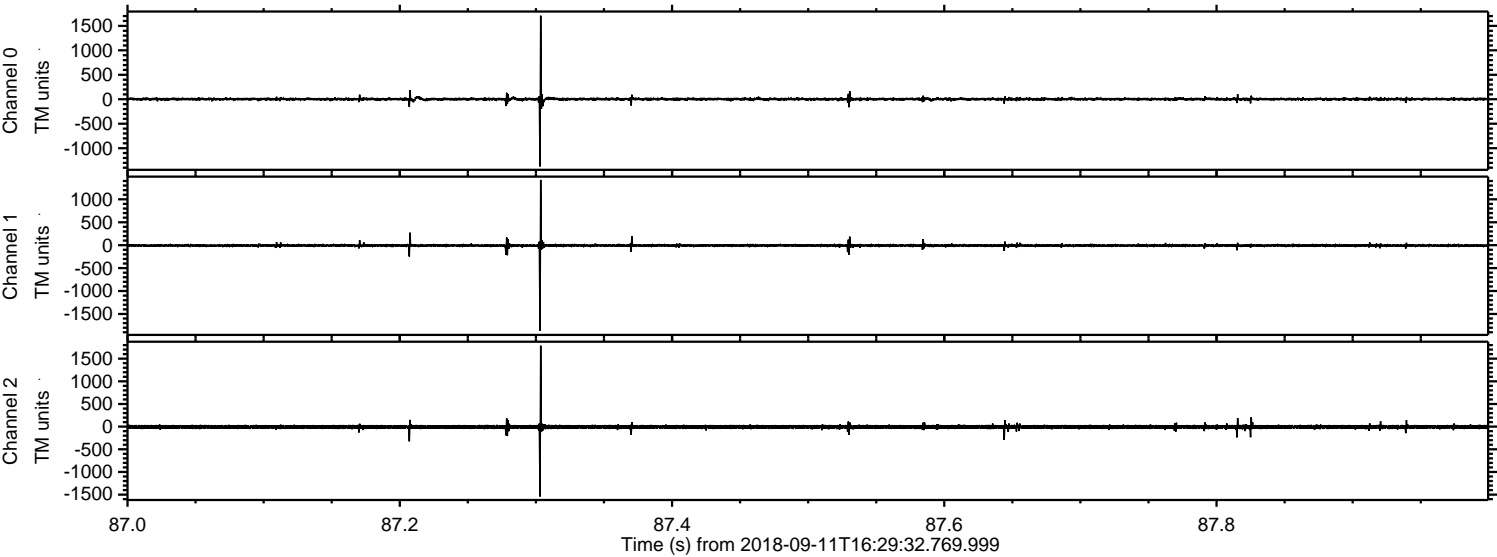


ELMAVAN 3D WAVEFORMS (Measured data sampled at 50 kHz) 51000 packets of 144 samples from 2018-09-11T16:29:32.769.999. Part 127/147

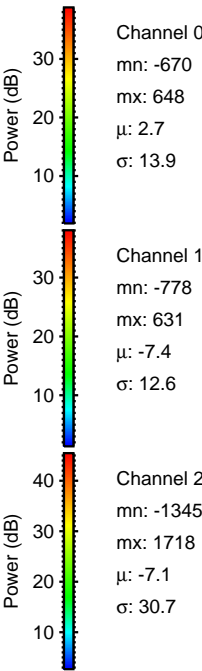
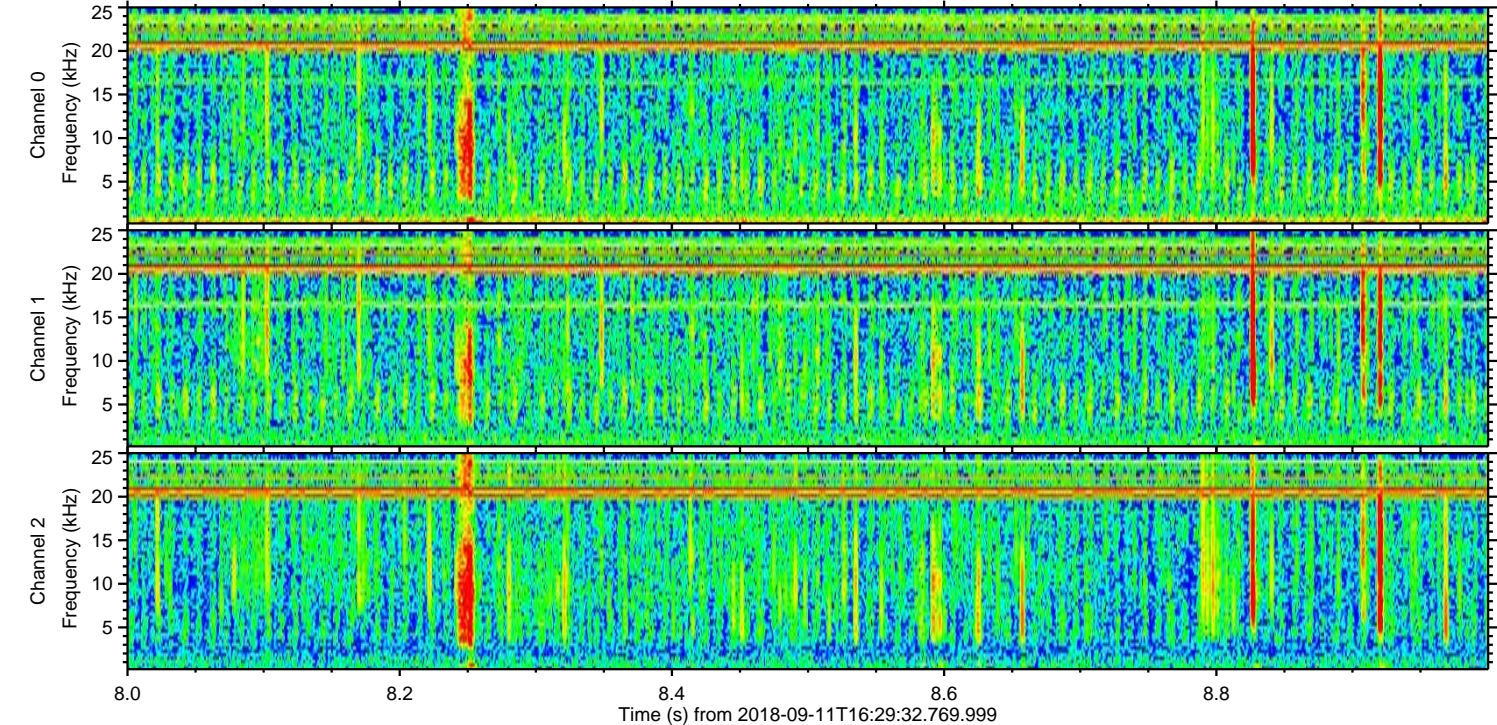
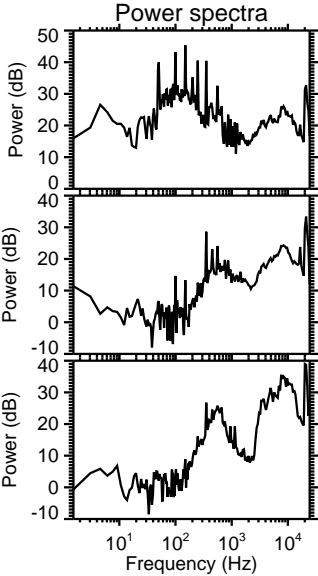
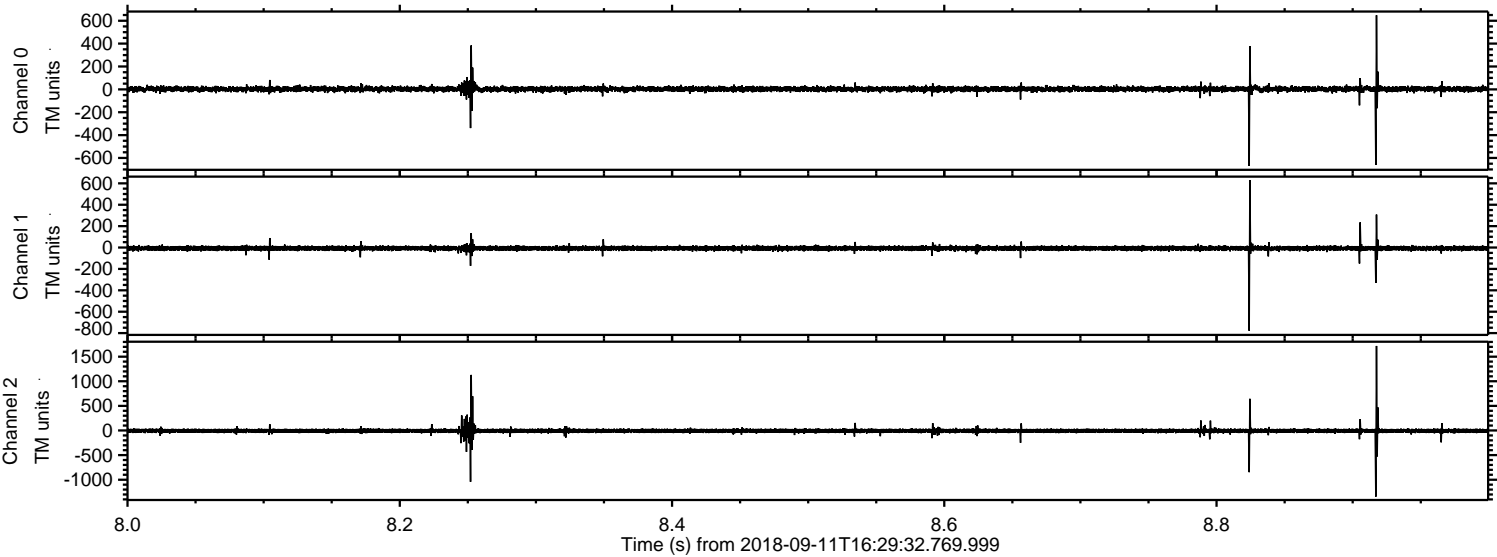
Processed Tue Sep 11 18:38:12 2018 by ELM ver.2012-10-06 from 001__elm20180911_162931__dat00.bin



Processed Tue Sep 11 18:38:13 2018 by ELM ver.2012-10-06 from 001__elm20180911_162931__dat00.bin



Processed Tue Sep 11 18:38:14 2018 by ELM ver.2012-10-06 from 001__elm20180911_162931__dat00.bin



Channel 0
mn: -670
mx: 648
 μ : 2.7
 σ : 13.9

Channel 1
mn: -778
mx: 631
 μ : -7.4
 σ : 12.6

Channel 2
mn: -1345
mx: 1718
 μ : -7.1
 σ : 30.7

Processed Tue Sep 11 18:38:14 2018 by ELM ver.2012-10-06 from 001__elm20180911_162931__dat00.bin

