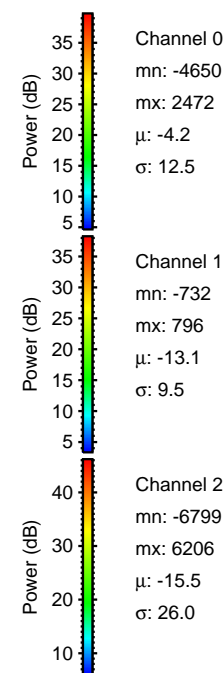
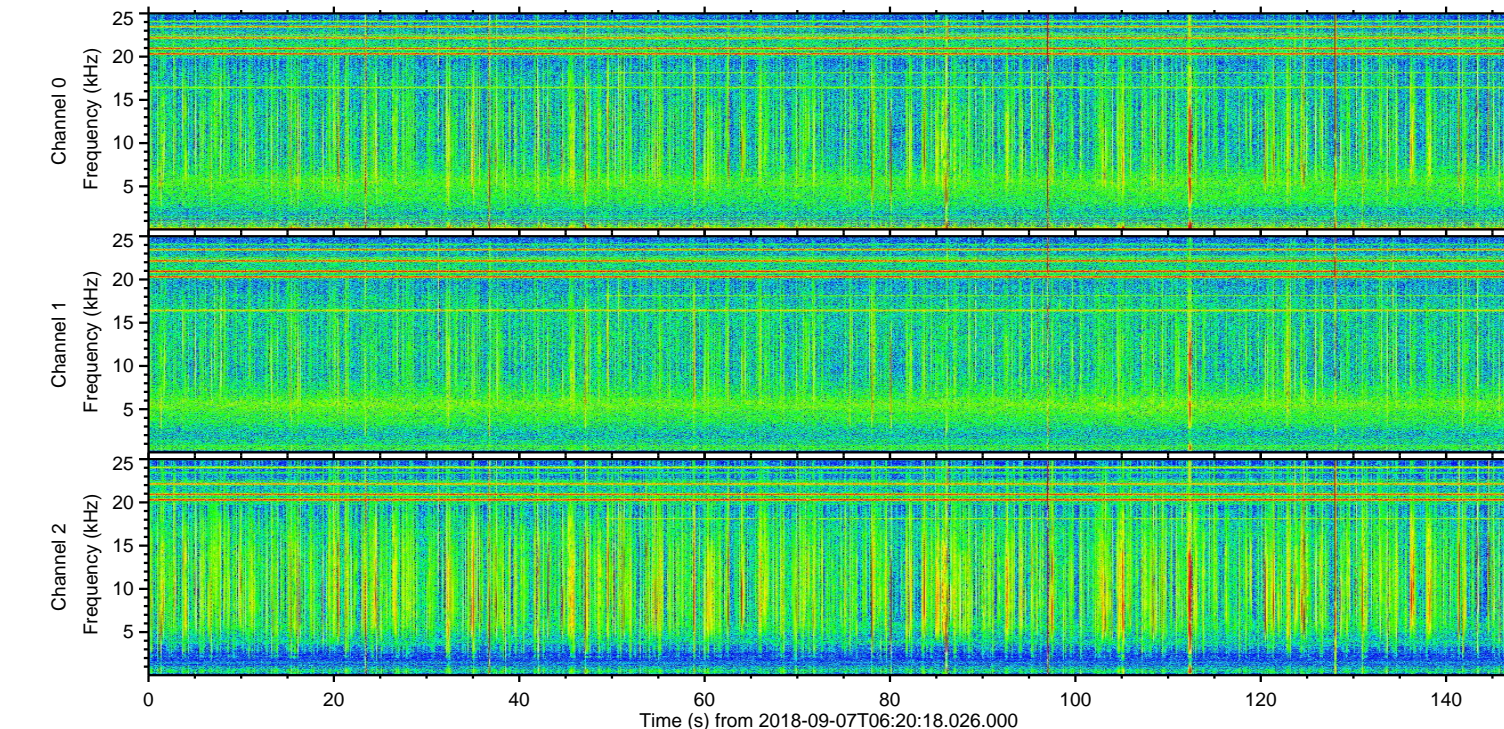
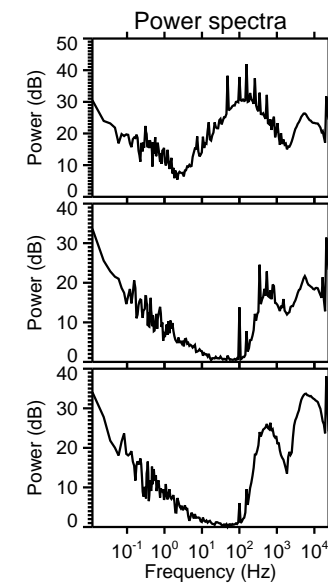
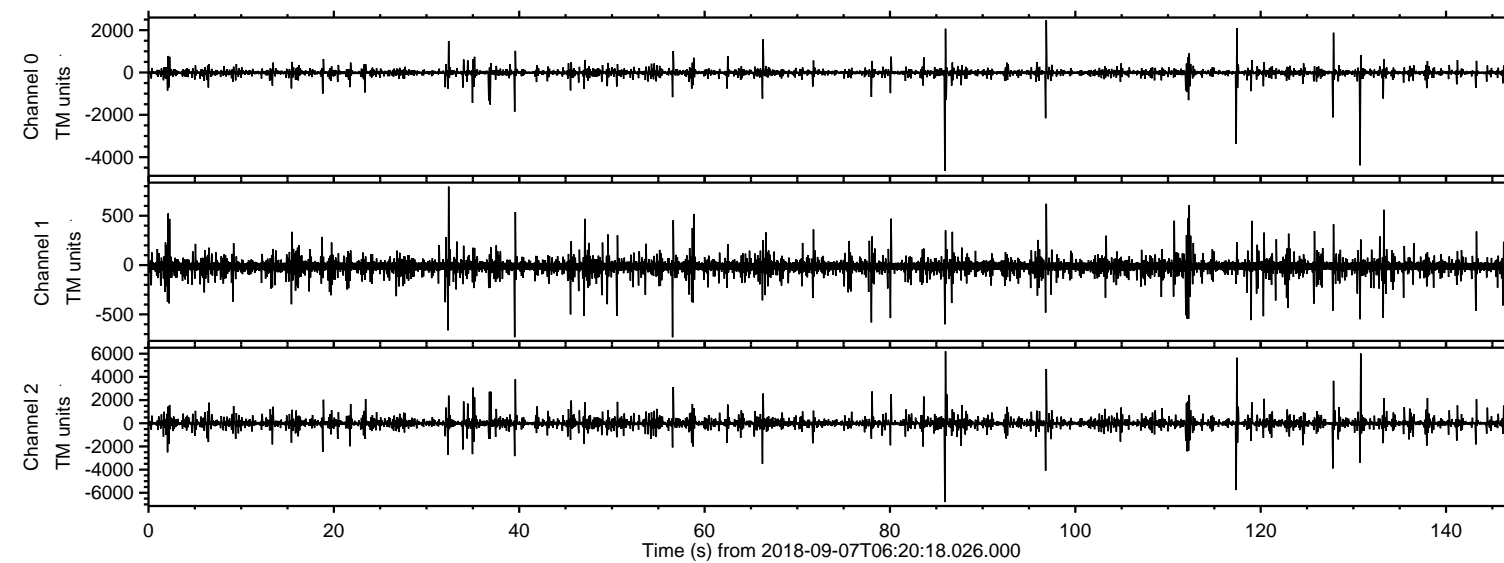
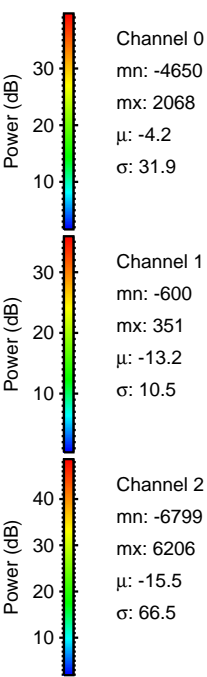
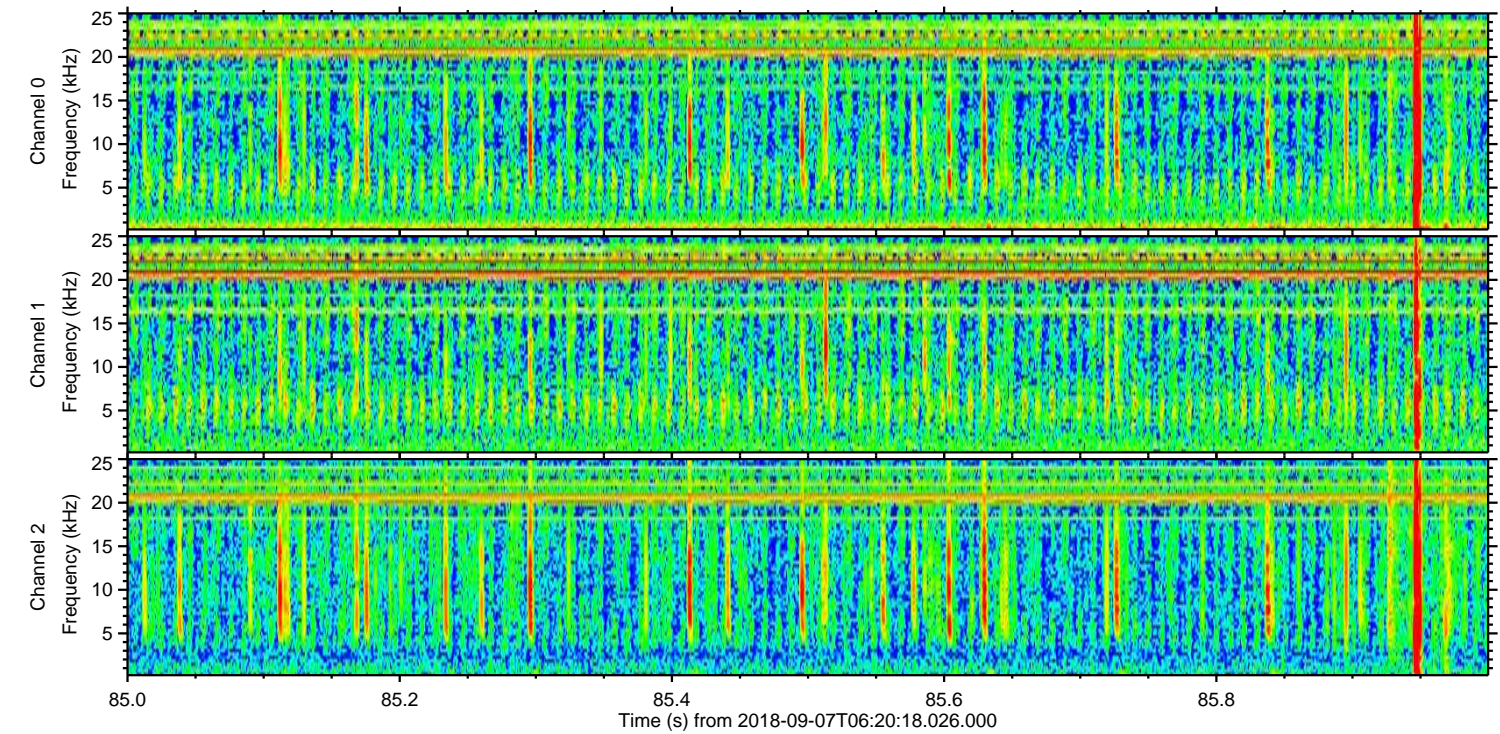
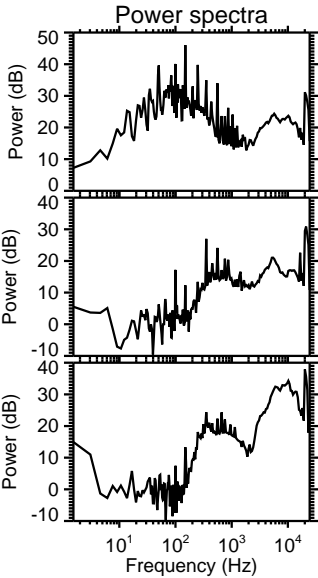
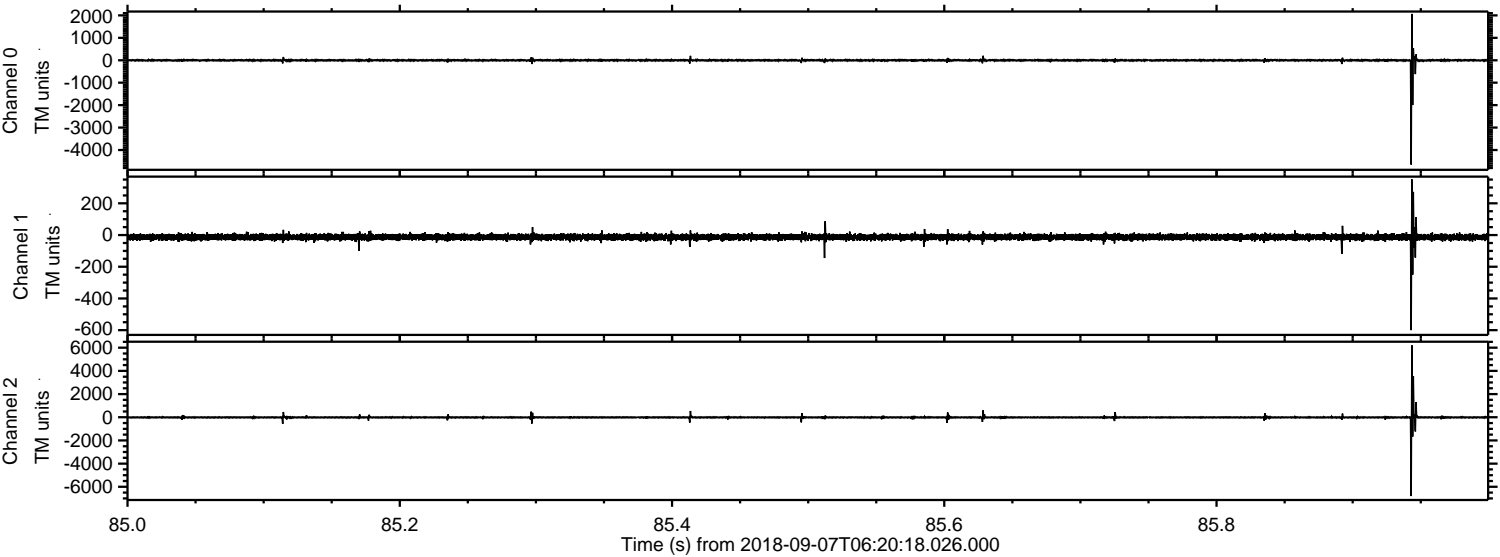


ELMAVAN 3D WAVEFORMS (Measured data sampled at 50 kHz) 51000 packets of 144 samples from 2018-09-07T06:20:18.026.000.

Processed Fri Sep 7 08:28:13 2018 by ELM ver.2012-10-06 from 001__elm20180907_062017__dat00.bin

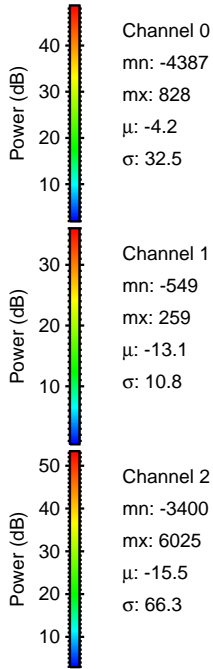
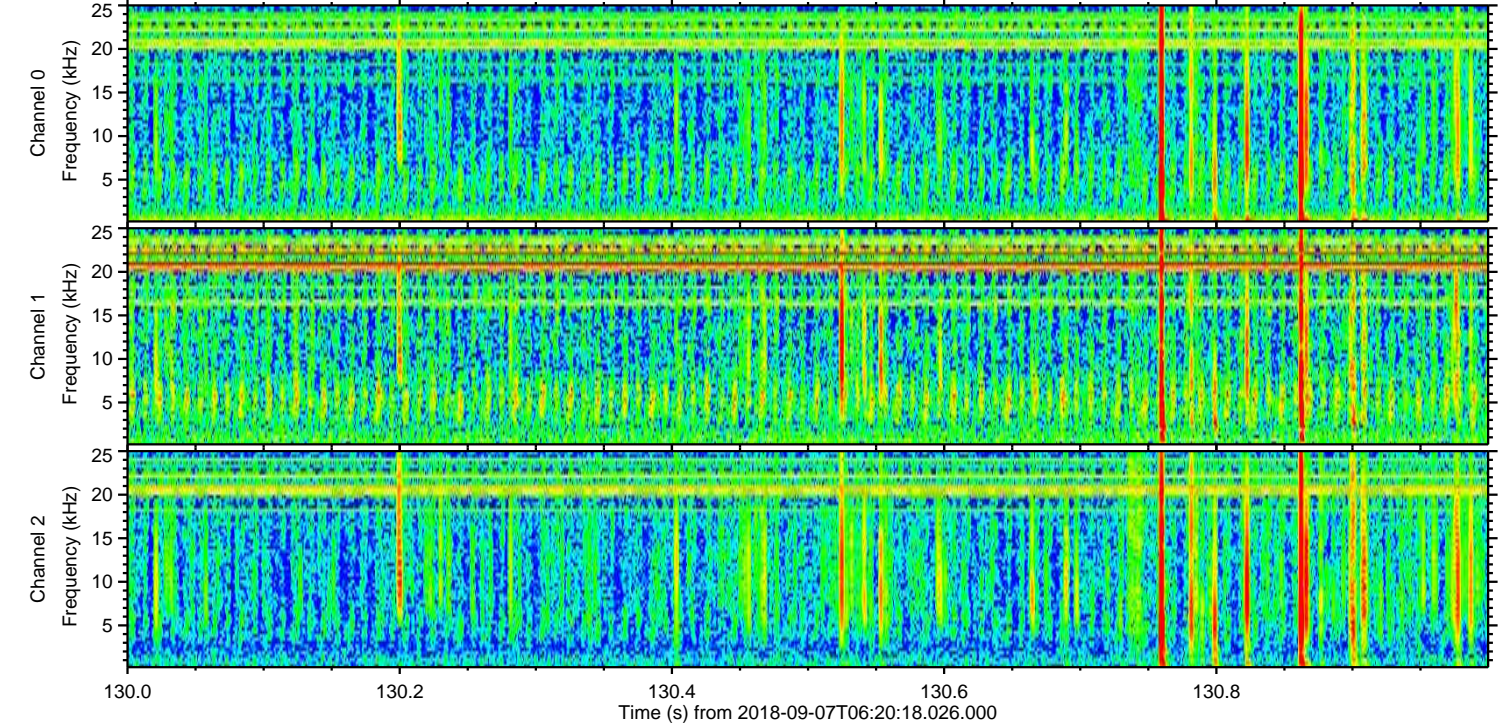
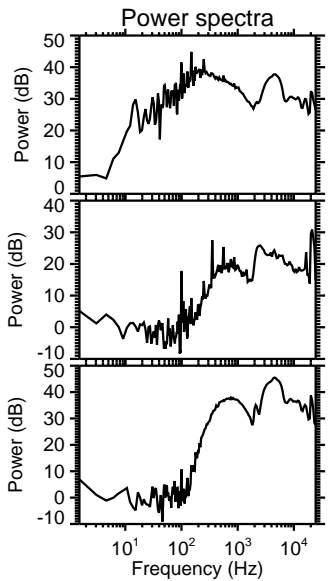
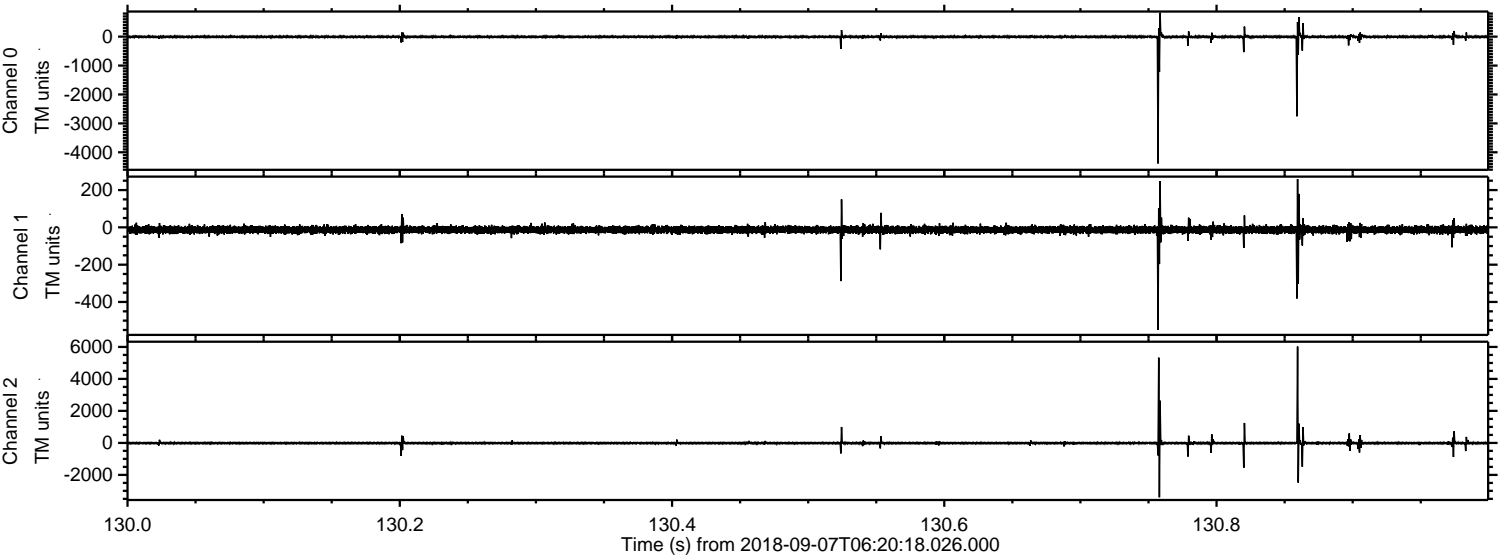


Processed Fri Sep 7 08:28:20 2018 by ELM ver.2012-10-06 from 001__elm20180907_062017__dat00.bin



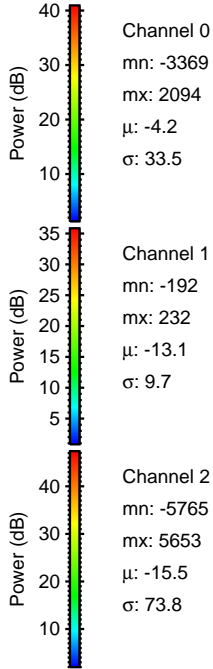
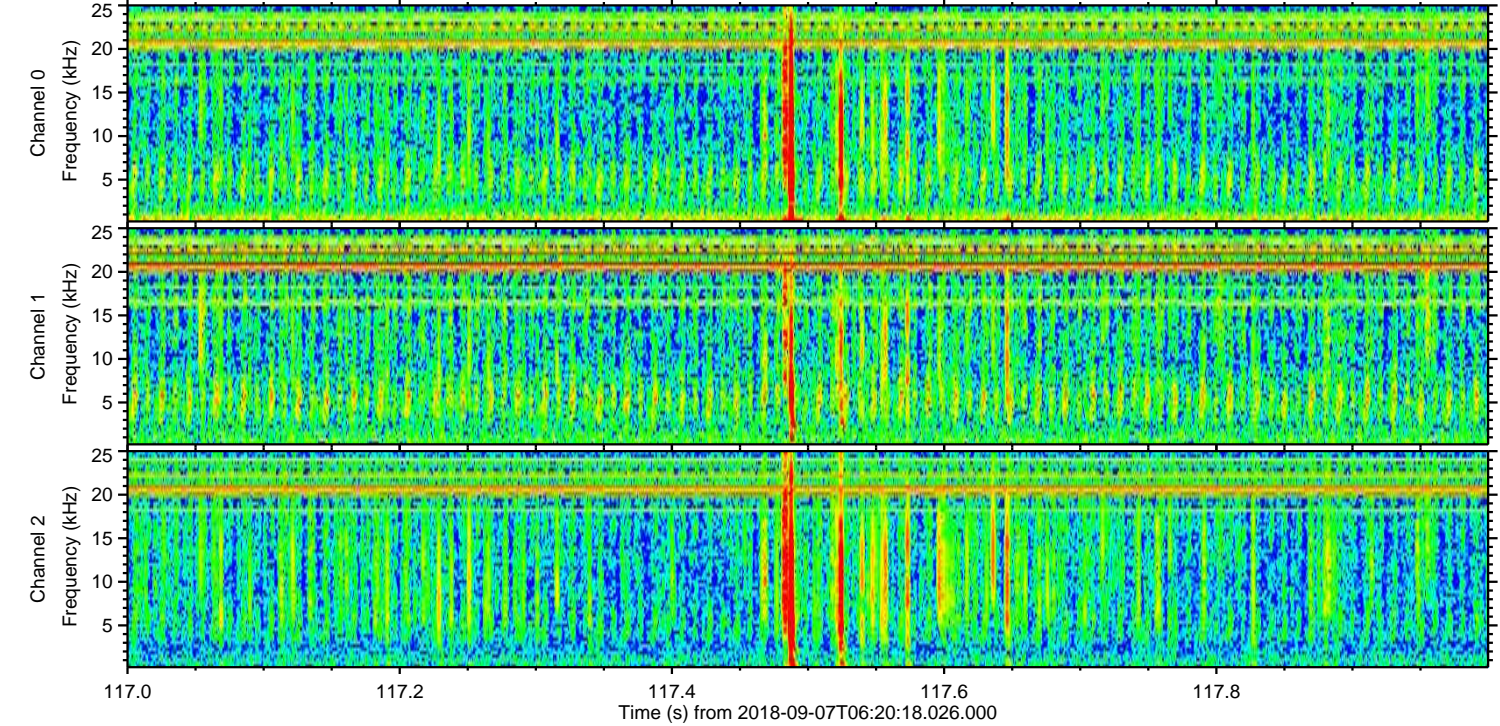
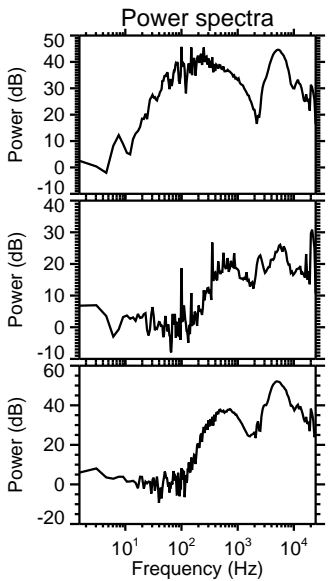
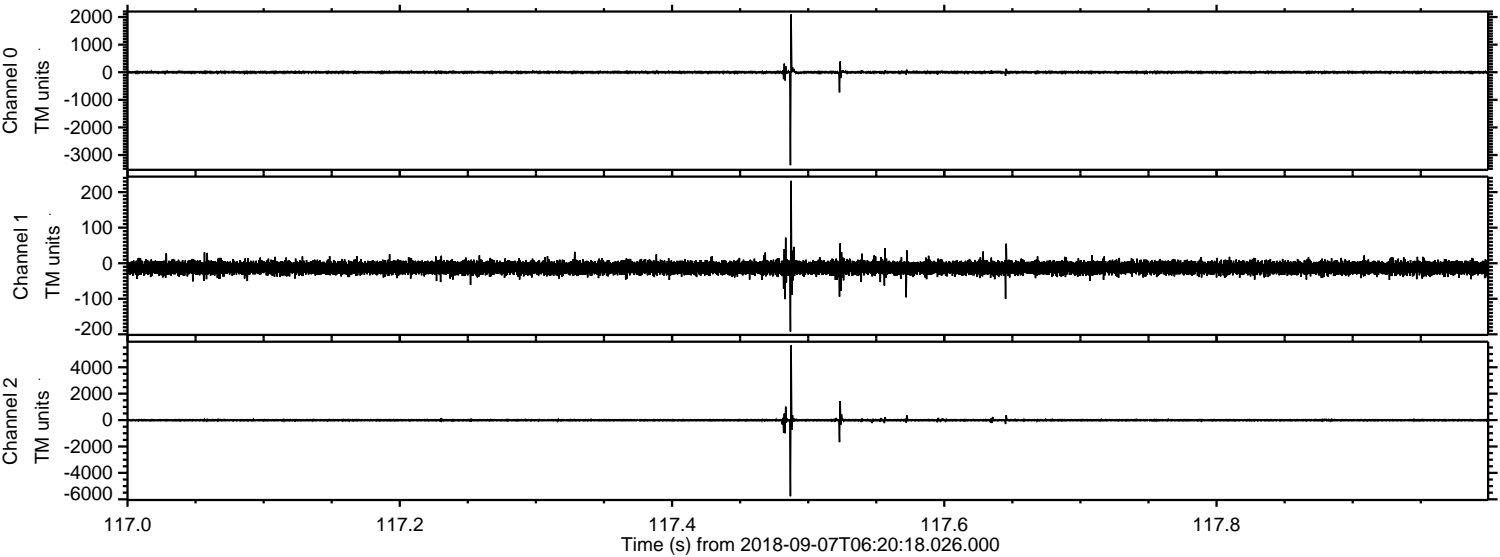
ELMAVAN 3D WAVEFORMS (Measured data sampled at 50 kHz) 51000 packets of 144 samples from 2018-09-07T06:20:18.026.000. Part 131/147

Processed Fri Sep 7 08:28:21 2018 by ELM ver.2012-10-06 from 001__elm20180907_062017__dat00.bin

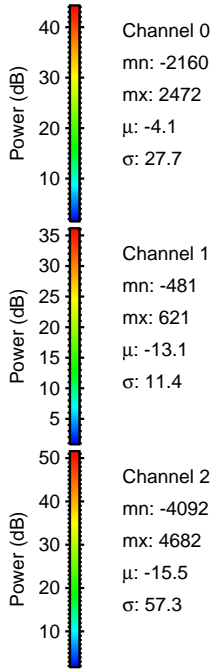
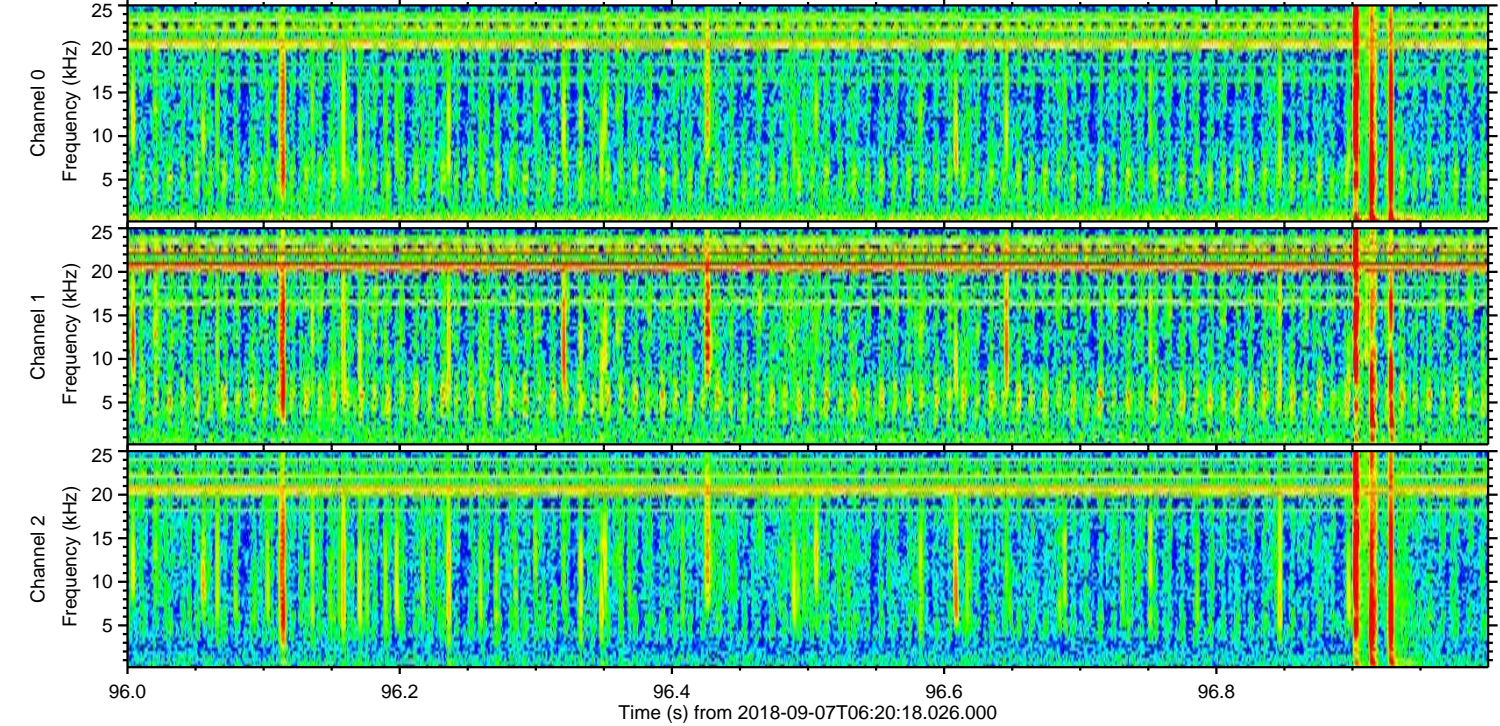
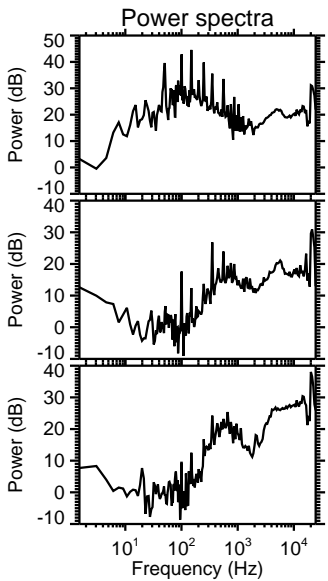
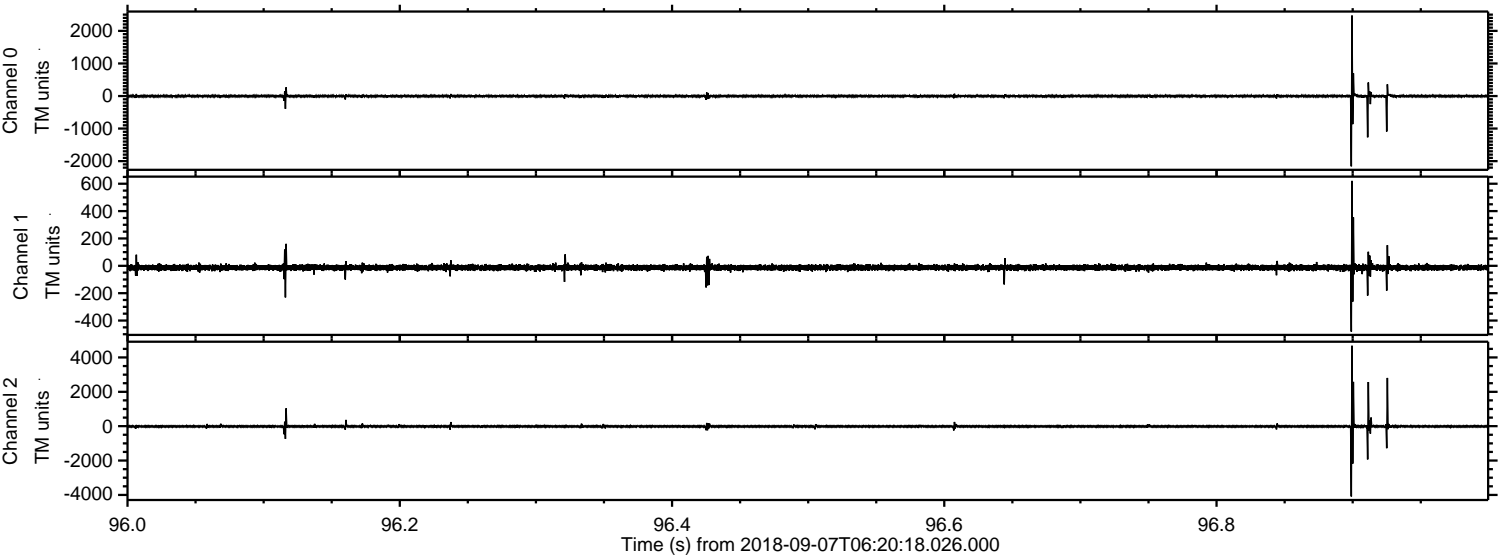


ELMAVAN 3D WAVEFORMS (Measured data sampled at 50 kHz) 51000 packets of 144 samples from 2018-09-07T06:20:18.026.000. Part 118/147

Processed Fri Sep 7 08:28:22 2018 by ELM ver.2012-10-06 from 001__elm20180907_062017__dat00.bin

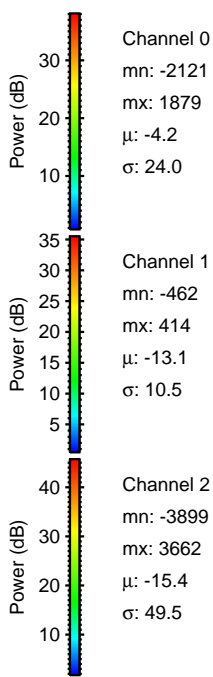
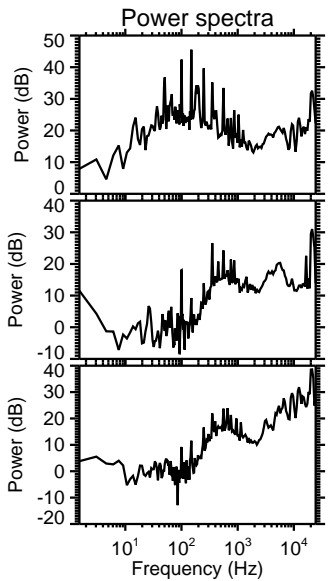
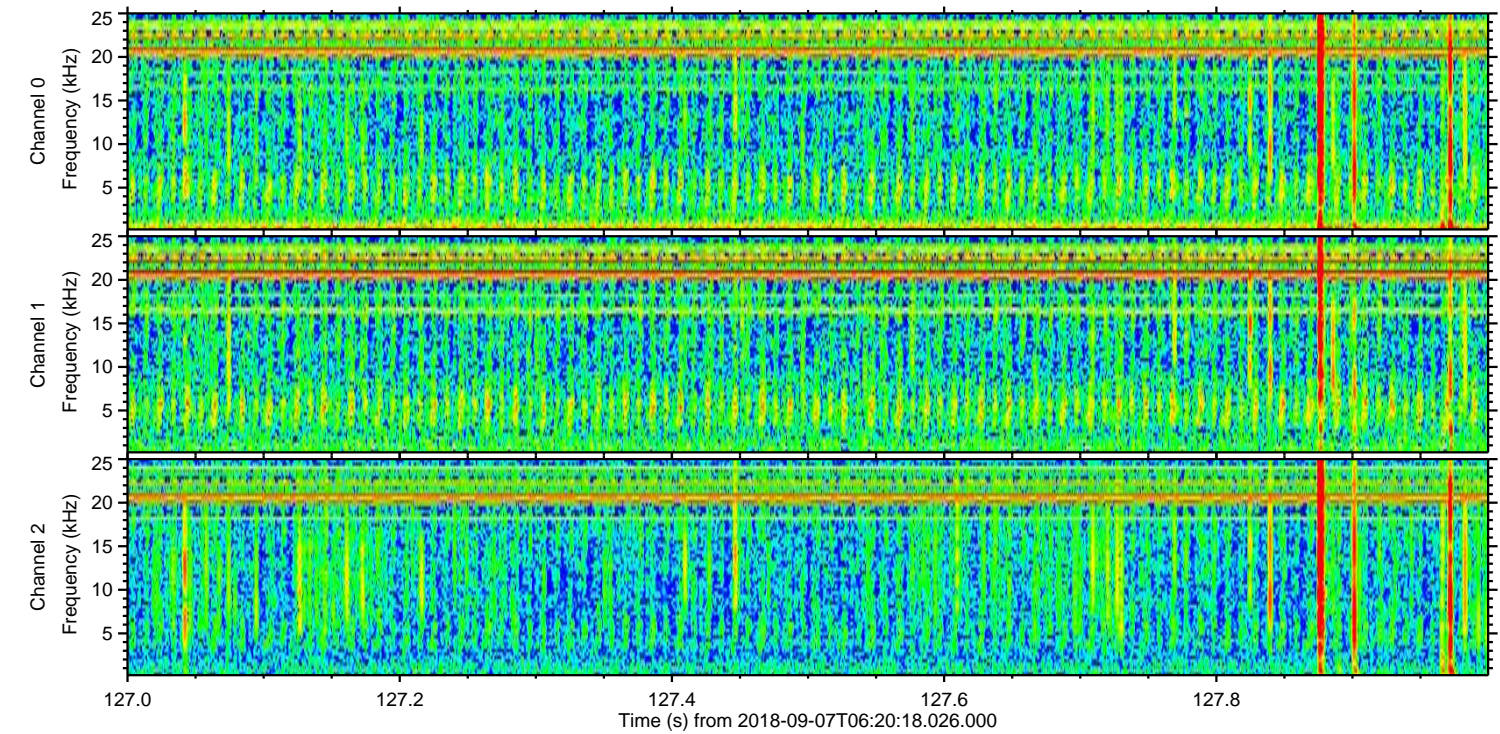
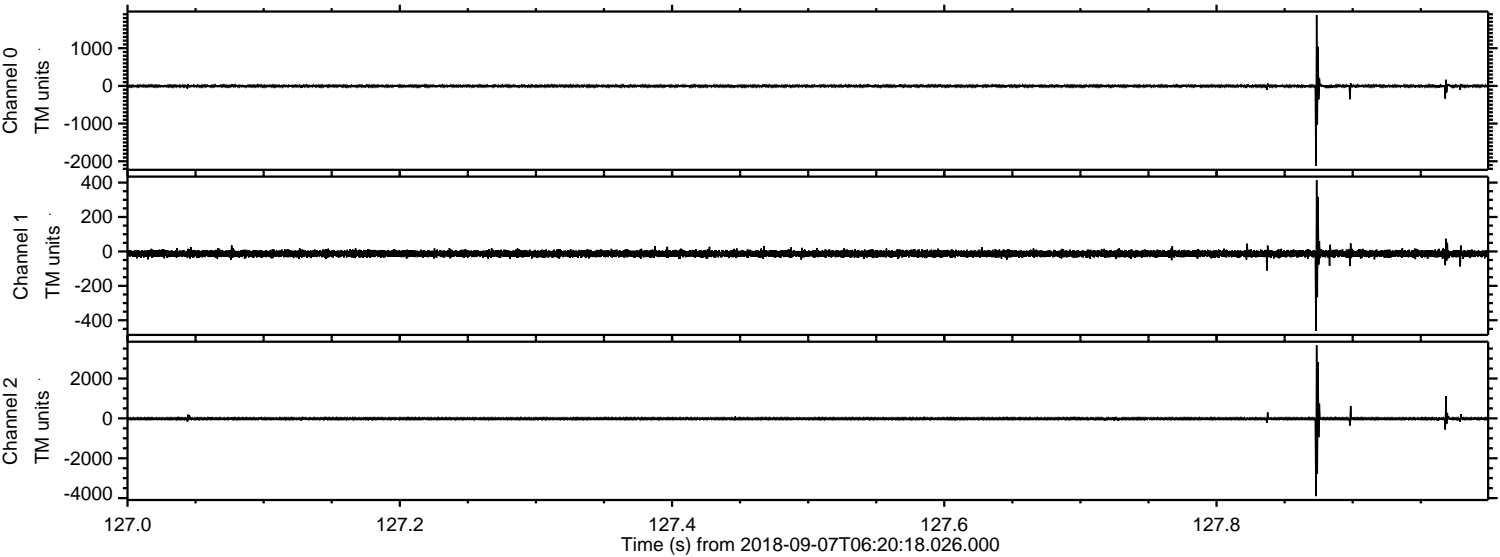


Processed Fri Sep 7 08:28:22 2018 by ELM ver.2012-10-06 from 001__elm20180907_062017__dat00.bin



ELMAVAN 3D WAVEFORMS (Measured data sampled at 50 kHz) 51000 packets of 144 samples from 2018-09-07T06:20:18.026.000. Part 128/147

Processed Fri Sep 7 08:28:23 2018 by ELM ver.2012-10-06 from 001__elm20180907_062017__dat00.bin

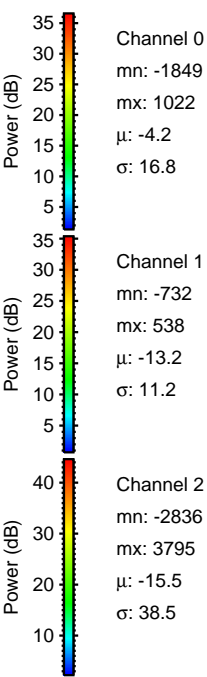
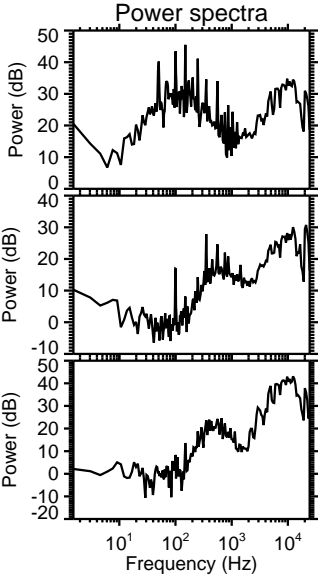
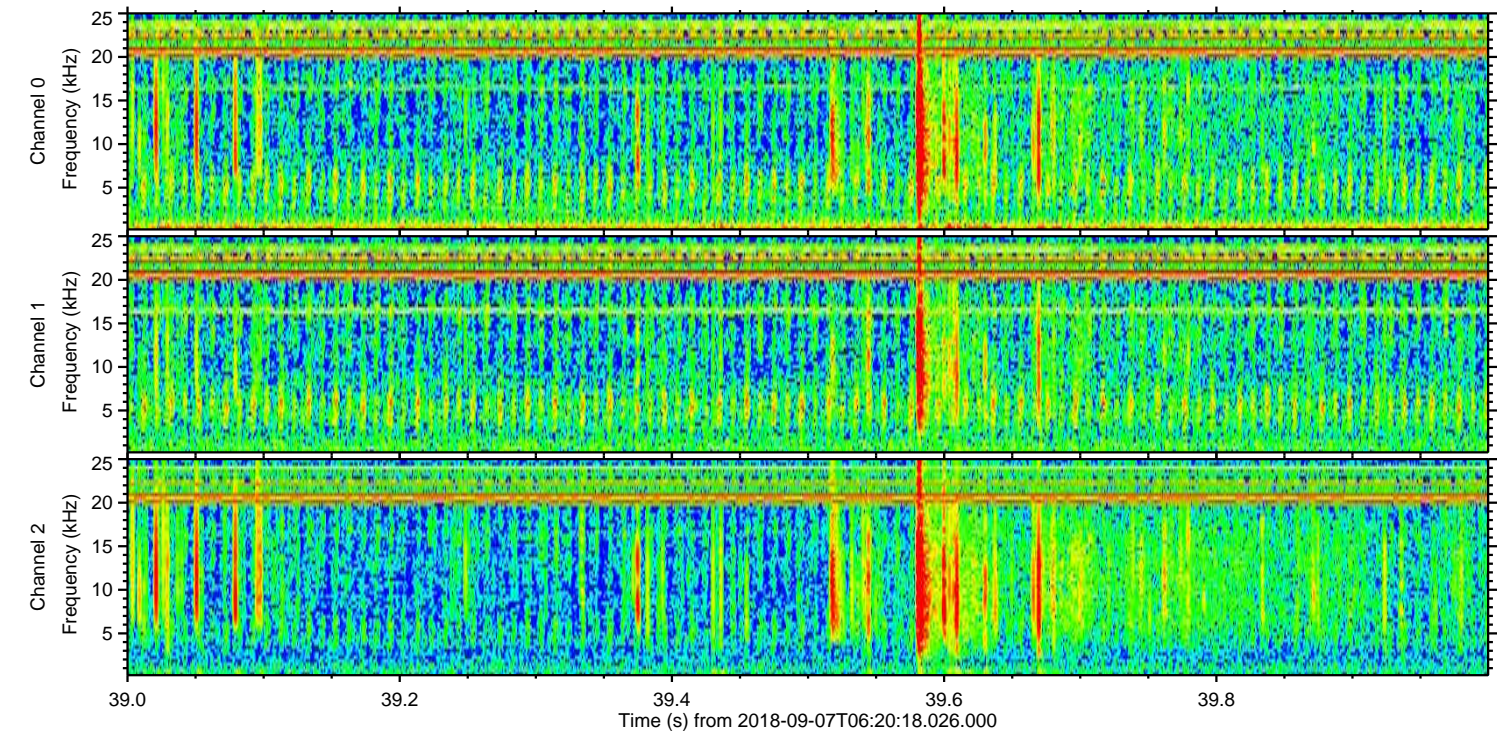
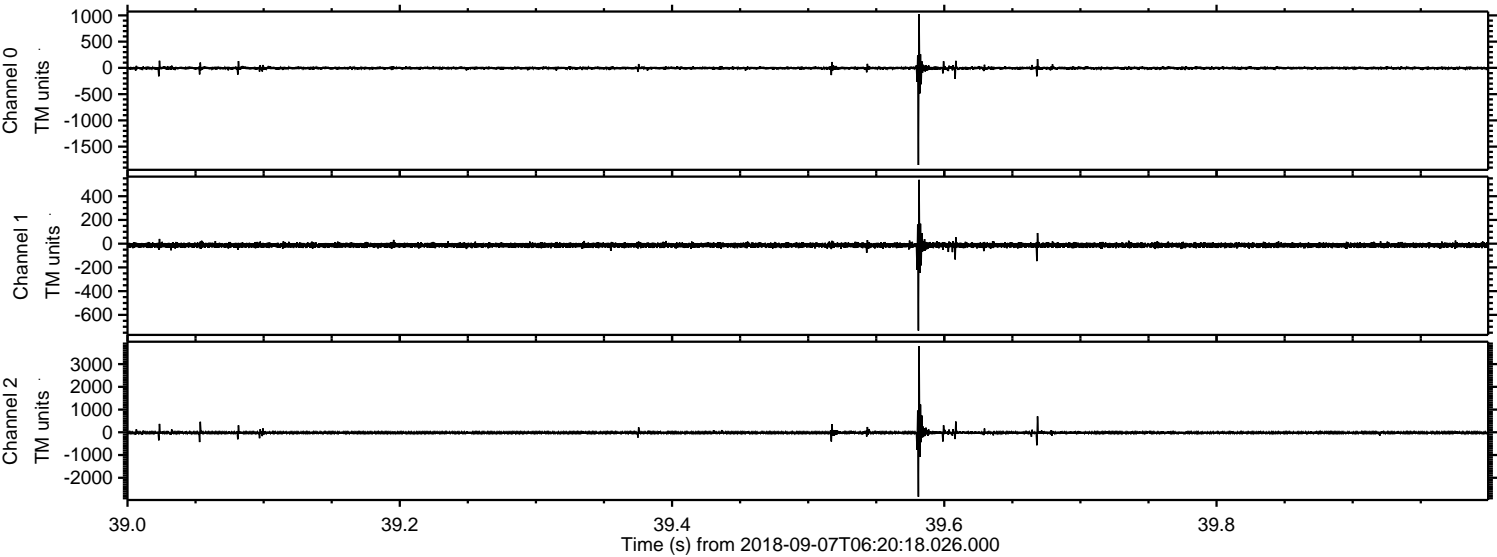


Channel 0
mn: -2121
mx: 1879
 μ : -4.2
 σ : 24.0

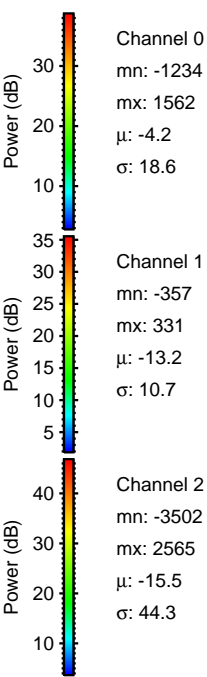
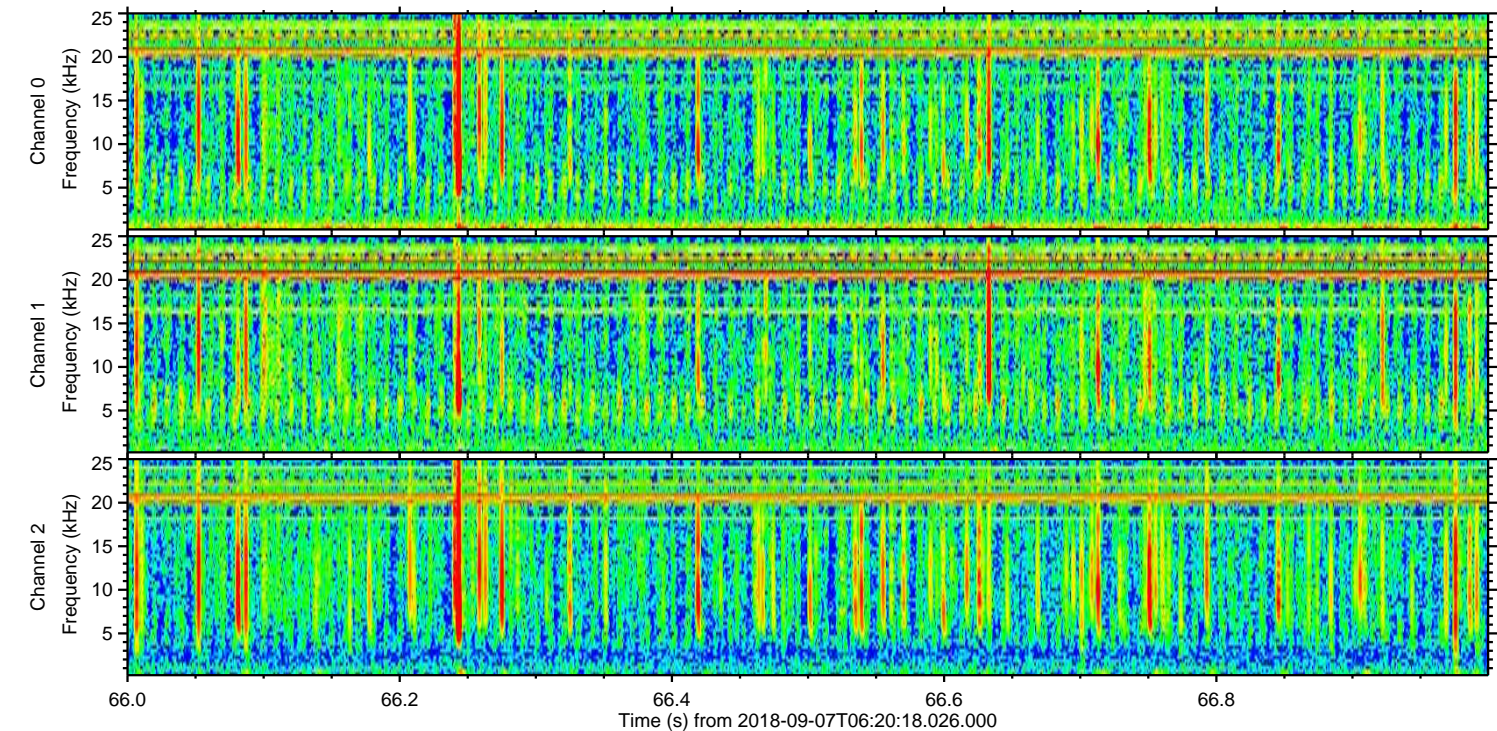
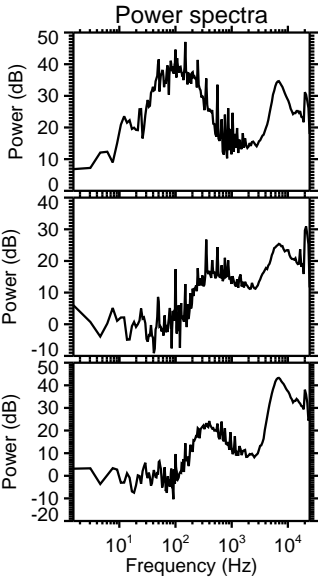
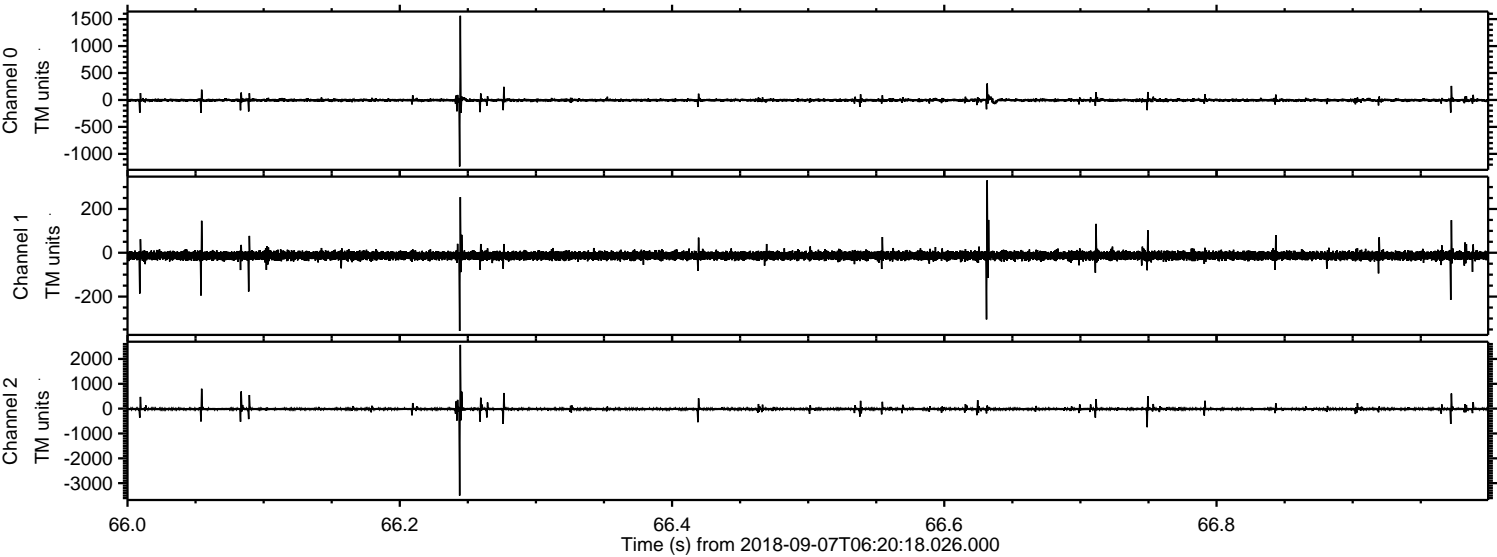
Channel 1
mn: -462
mx: 414
 μ : -13.1
 σ : 10.5

Channel 2
mn: -3899
mx: 3662
 μ : -15.4
 σ : 49.5

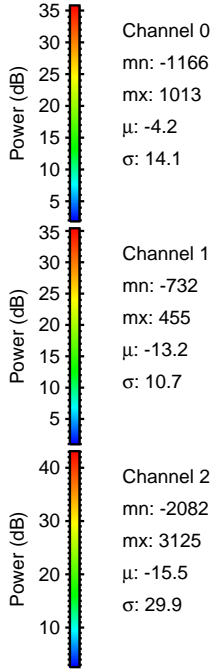
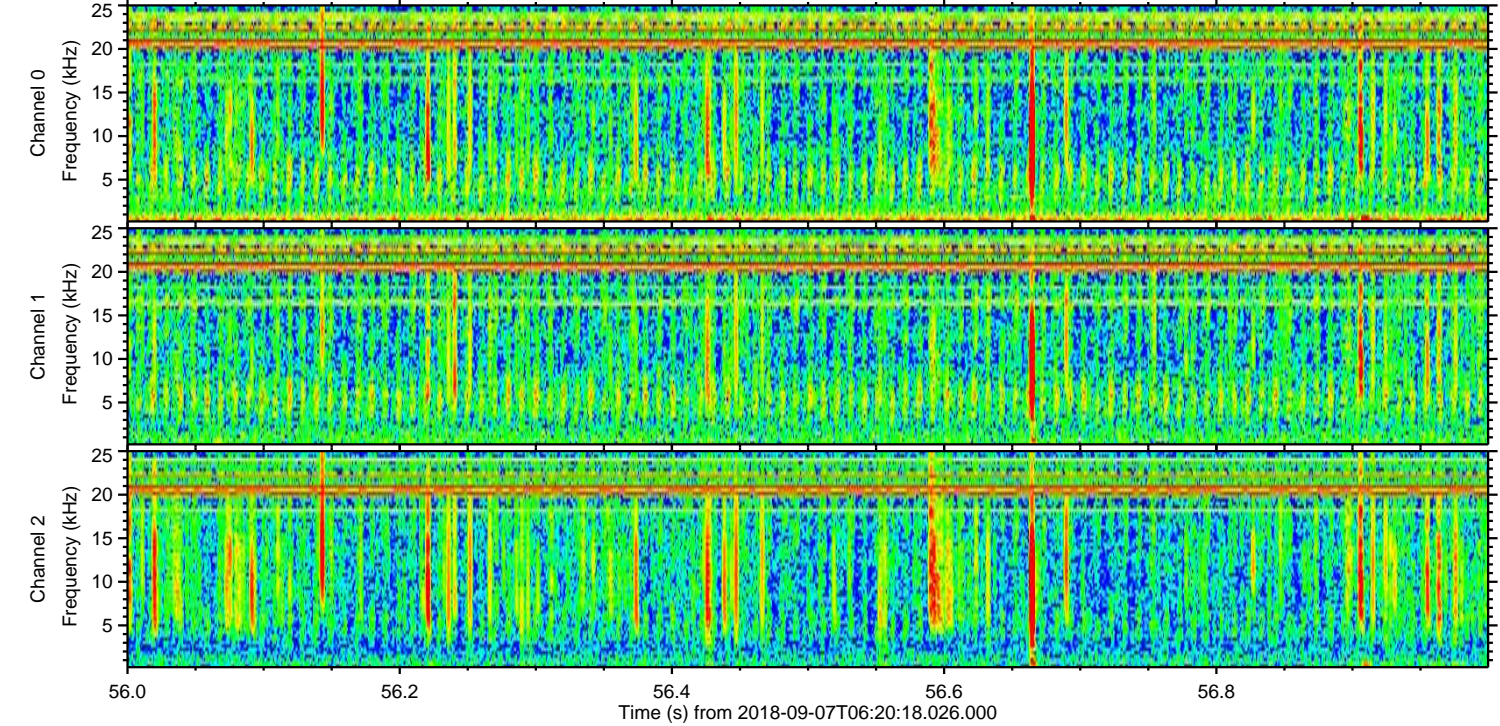
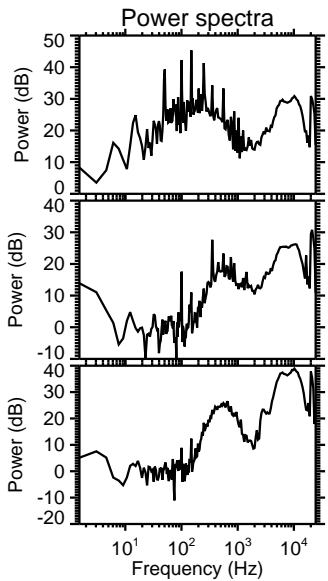
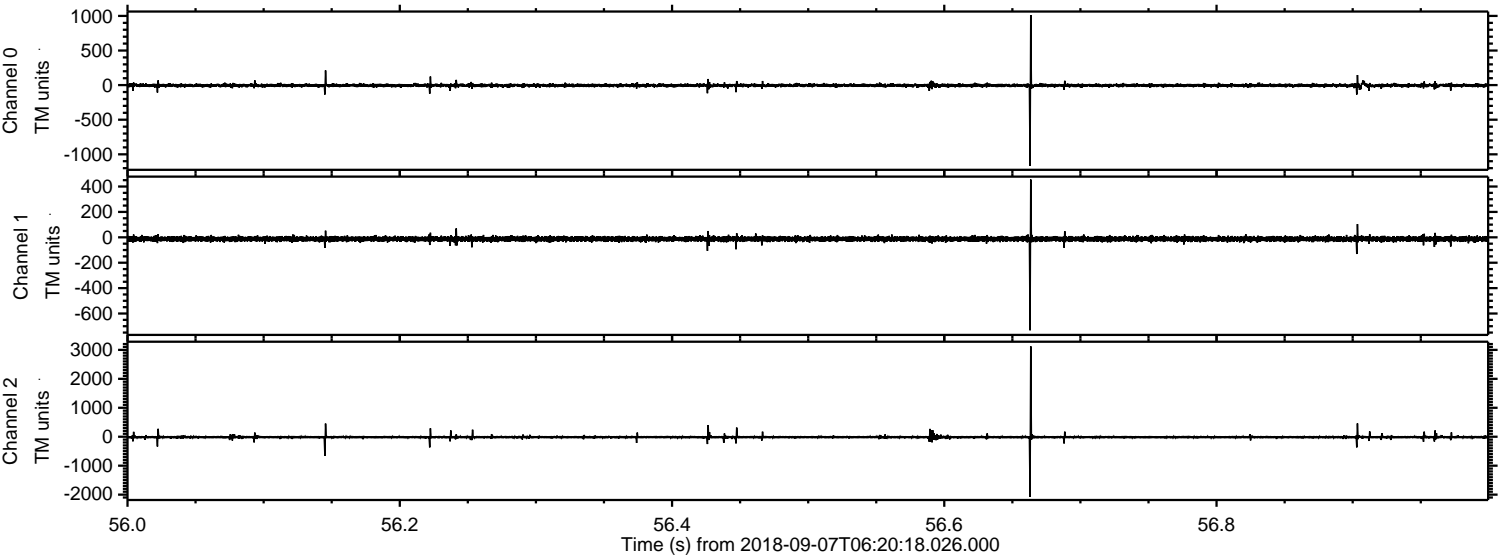
Processed Fri Sep 7 08:28:24 2018 by ELM ver.2012-10-06 from 001__elm20180907_062017__dat00.bin



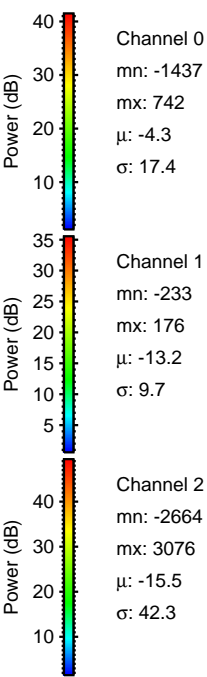
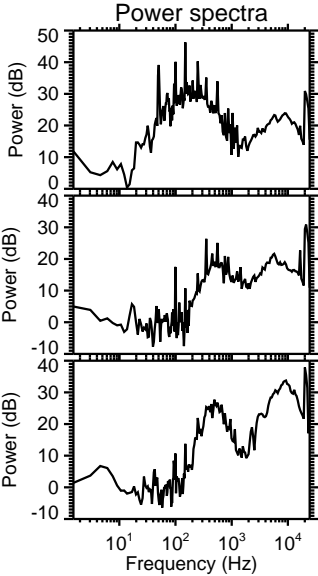
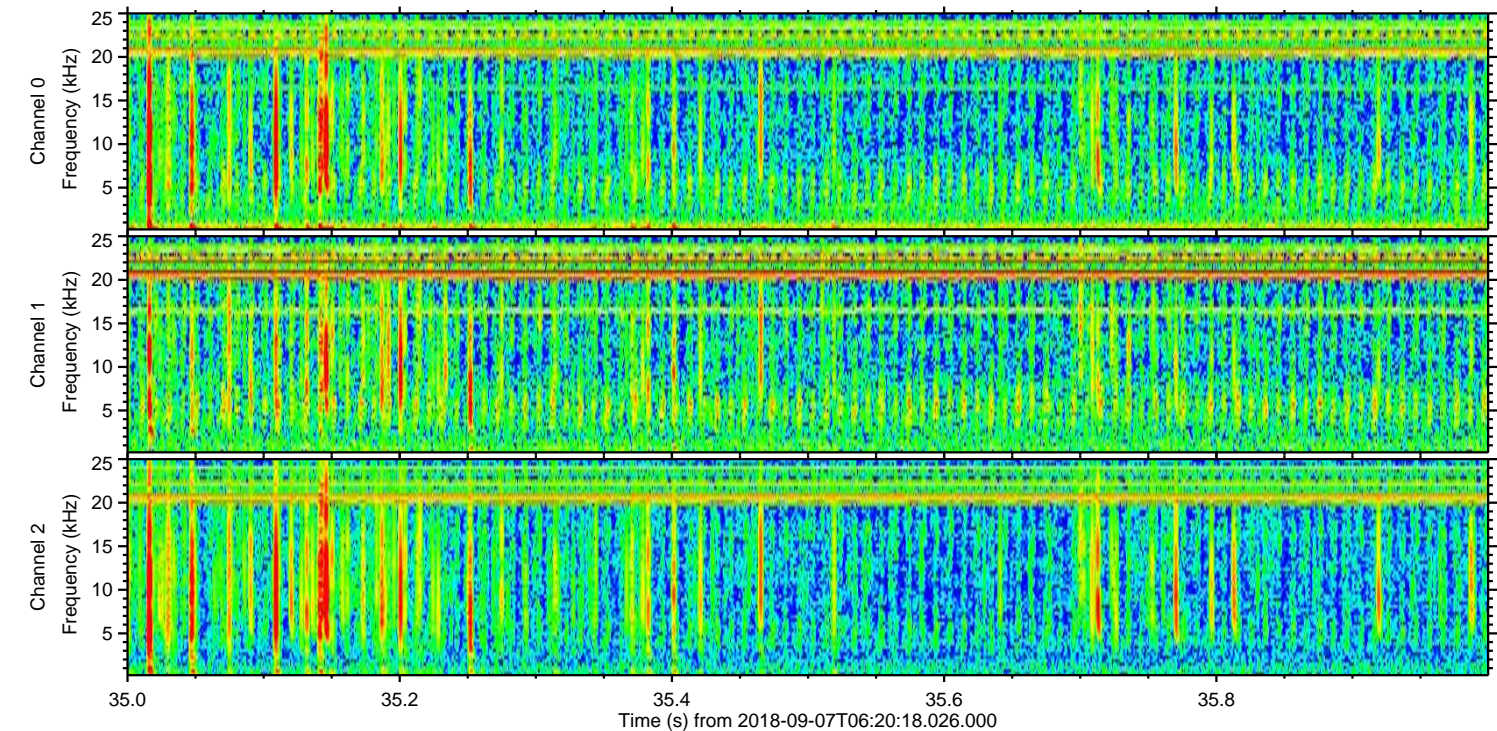
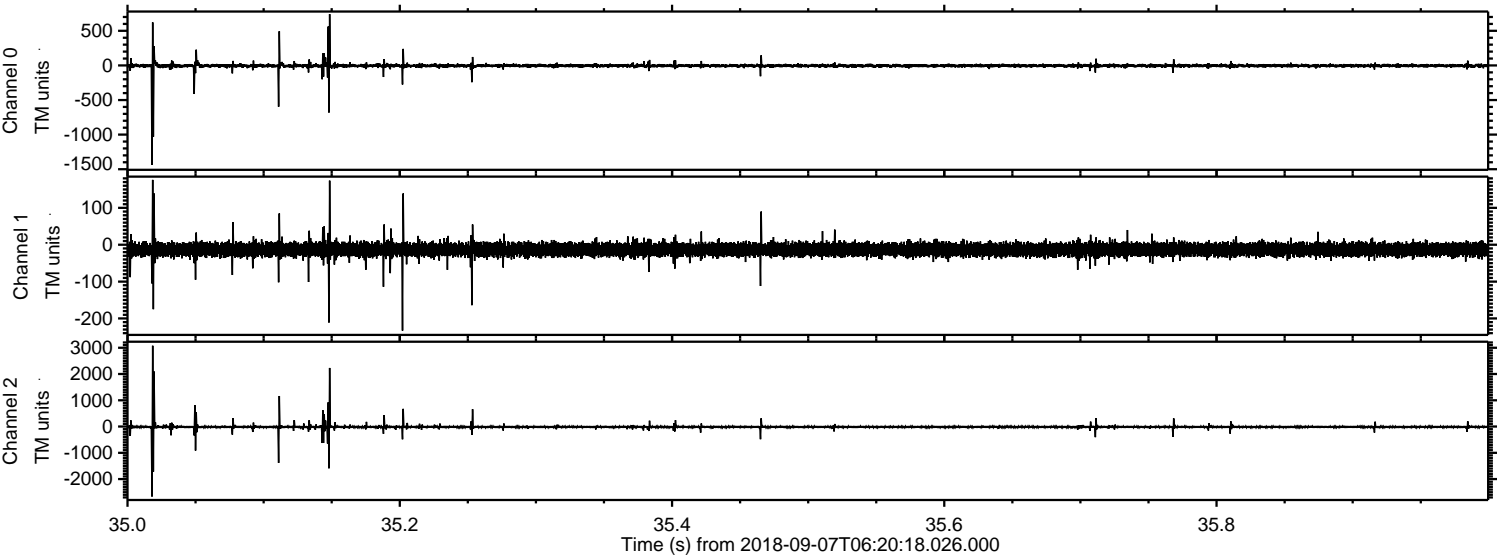
Processed Fri Sep 7 08:28:25 2018 by ELM ver.2012-10-06 from 001__elm20180907_062017__dat00.bin



Processed Fri Sep 7 08:28:25 2018 by ELM ver.2012-10-06 from 001__elm20180907_062017__dat00.bin



Processed Fri Sep 7 08:28:26 2018 by ELM ver.2012-10-06 from 001__elm20180907_062017__dat00.bin



Channel 0
mn: -1437
mx: 742
 μ : -4.3
 σ : 17.4

Channel 1
mn: -233
mx: 176
 μ : -13.2
 σ : 9.7

Channel 2
mn: -2664
mx: 3076
 μ : -15.5
 σ : 42.3

