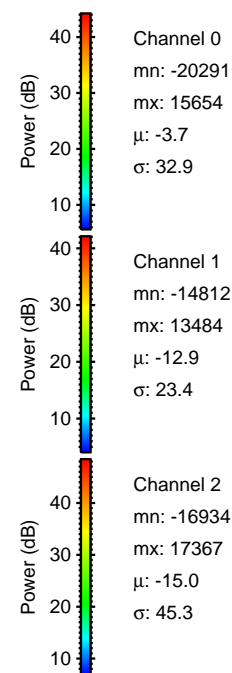
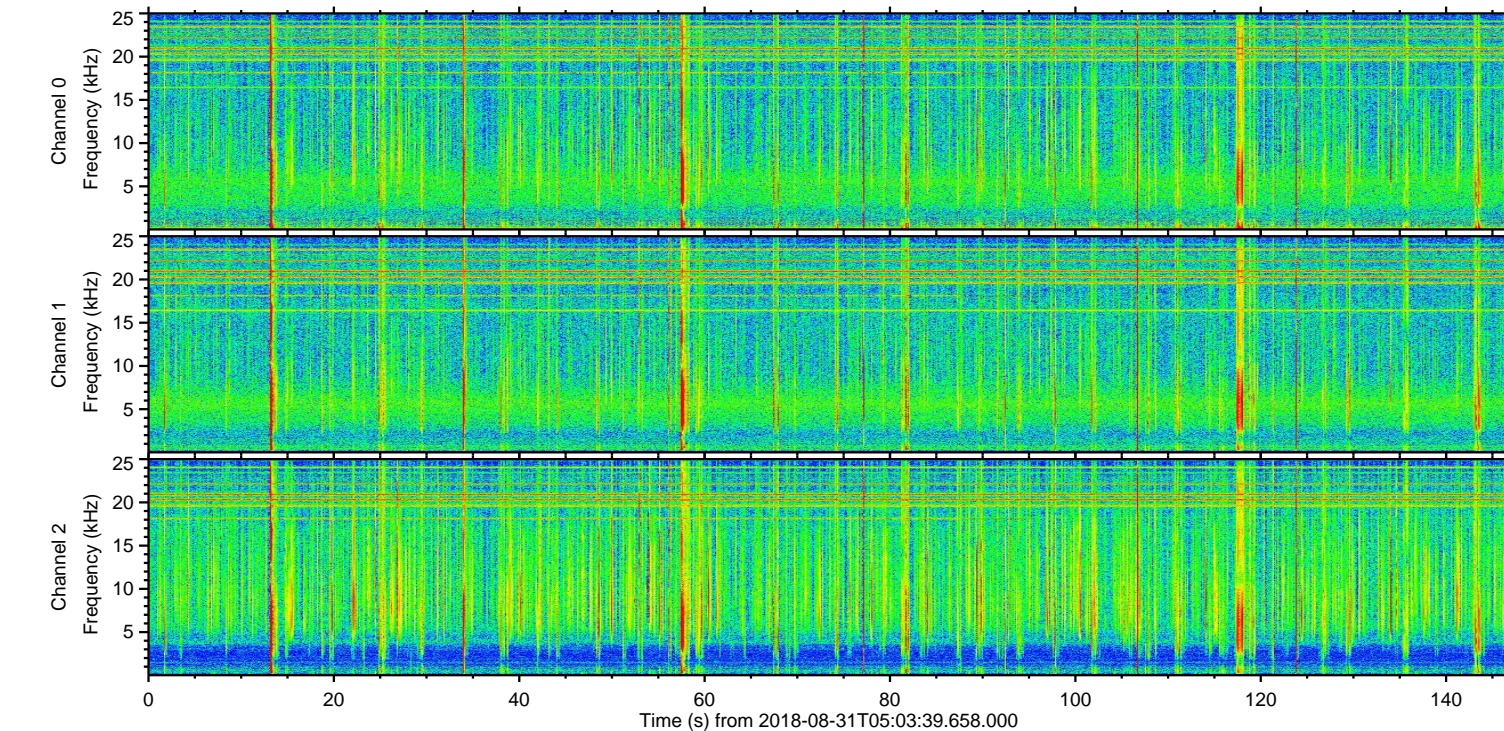
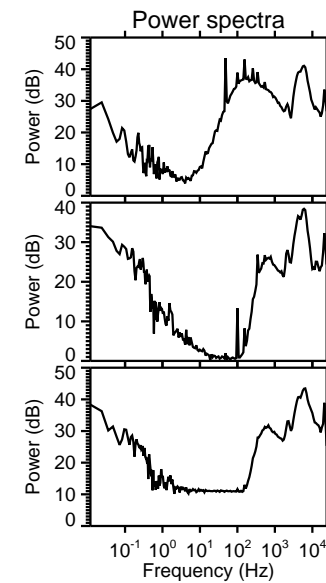
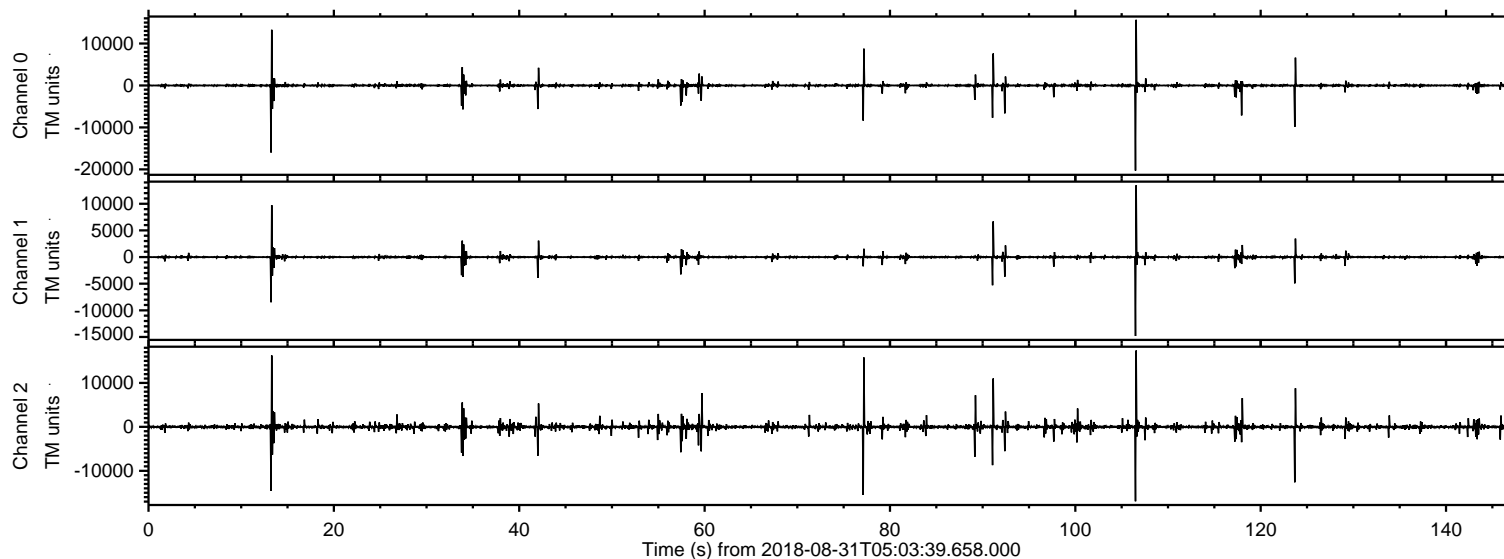


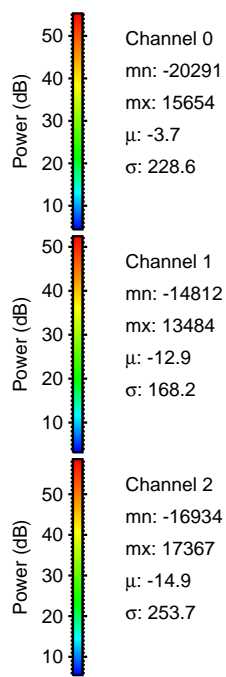
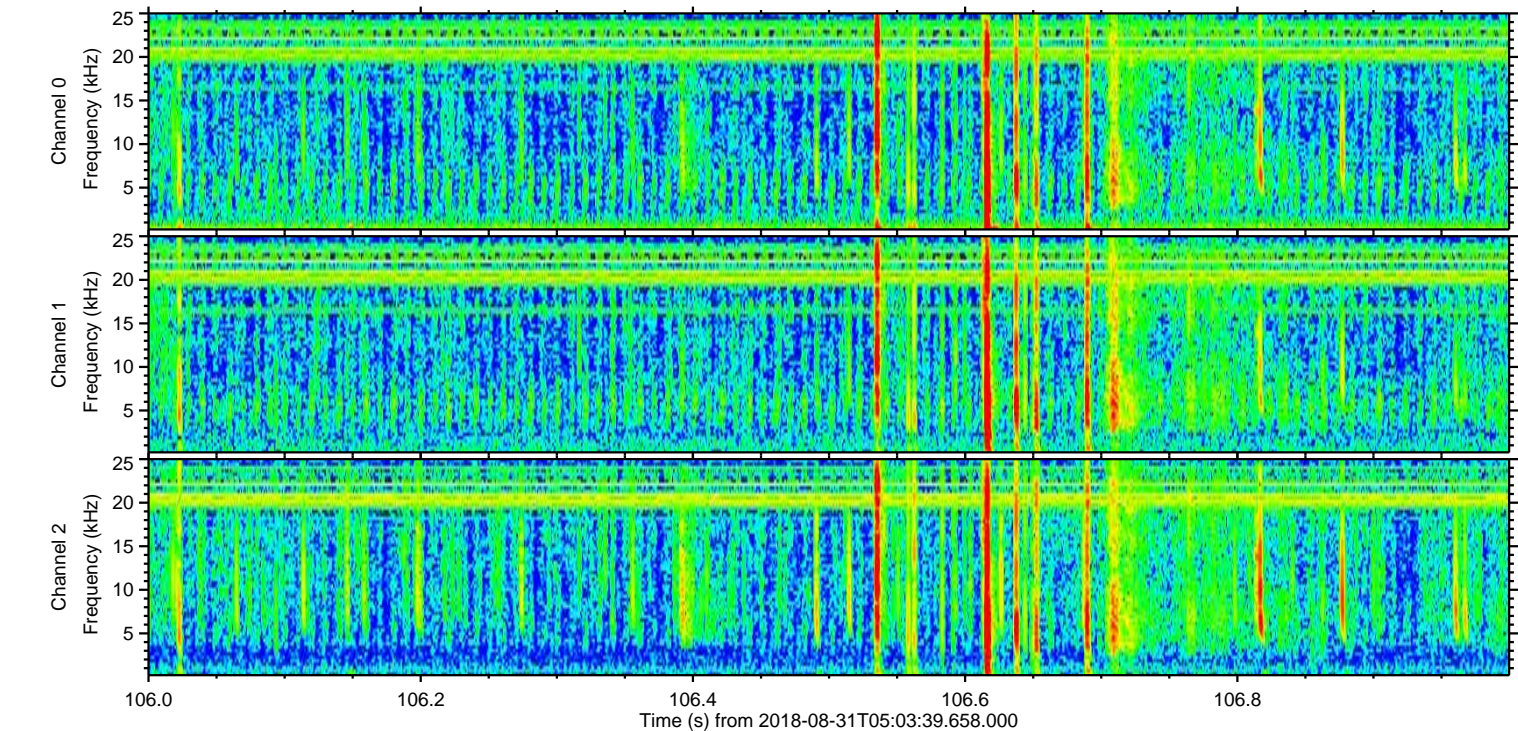
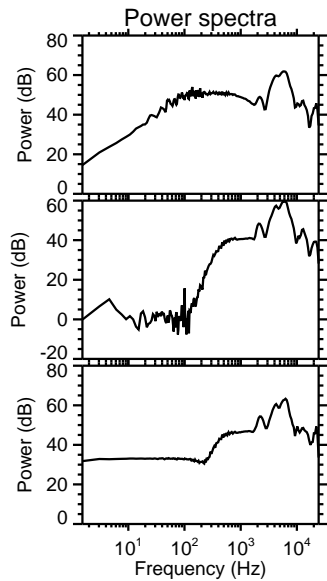
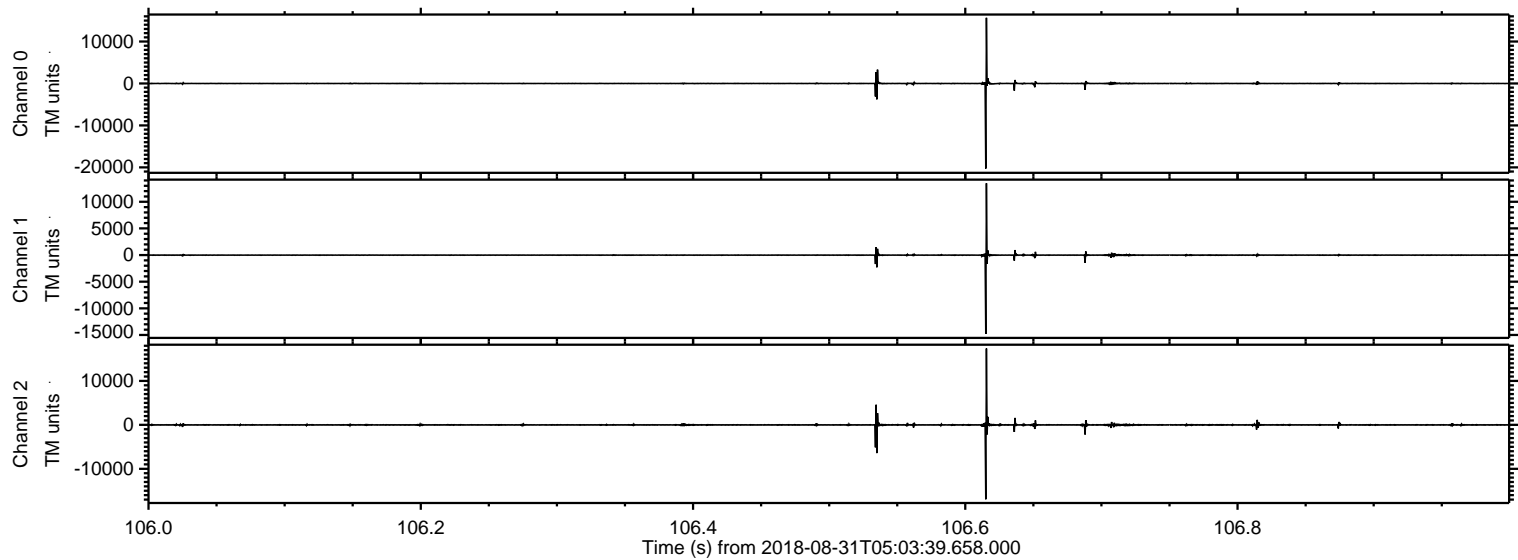
ELMAVAN 3D WAVEFORMS (Measured data sampled at 50 kHz) 51000 packets of 144 samples from 2018-08-31T05:03:39.658.000.

Processed Fri Aug 31 07:11:19 2018 by ELM ver.2012-10-06 from 001__elm20180831_050338__dat00.bin

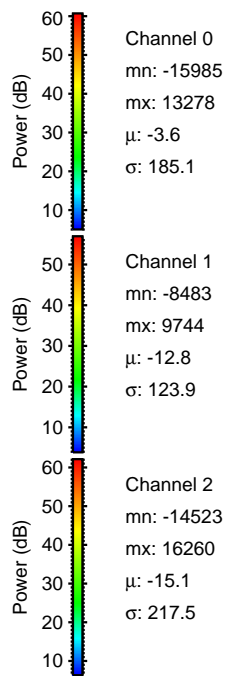
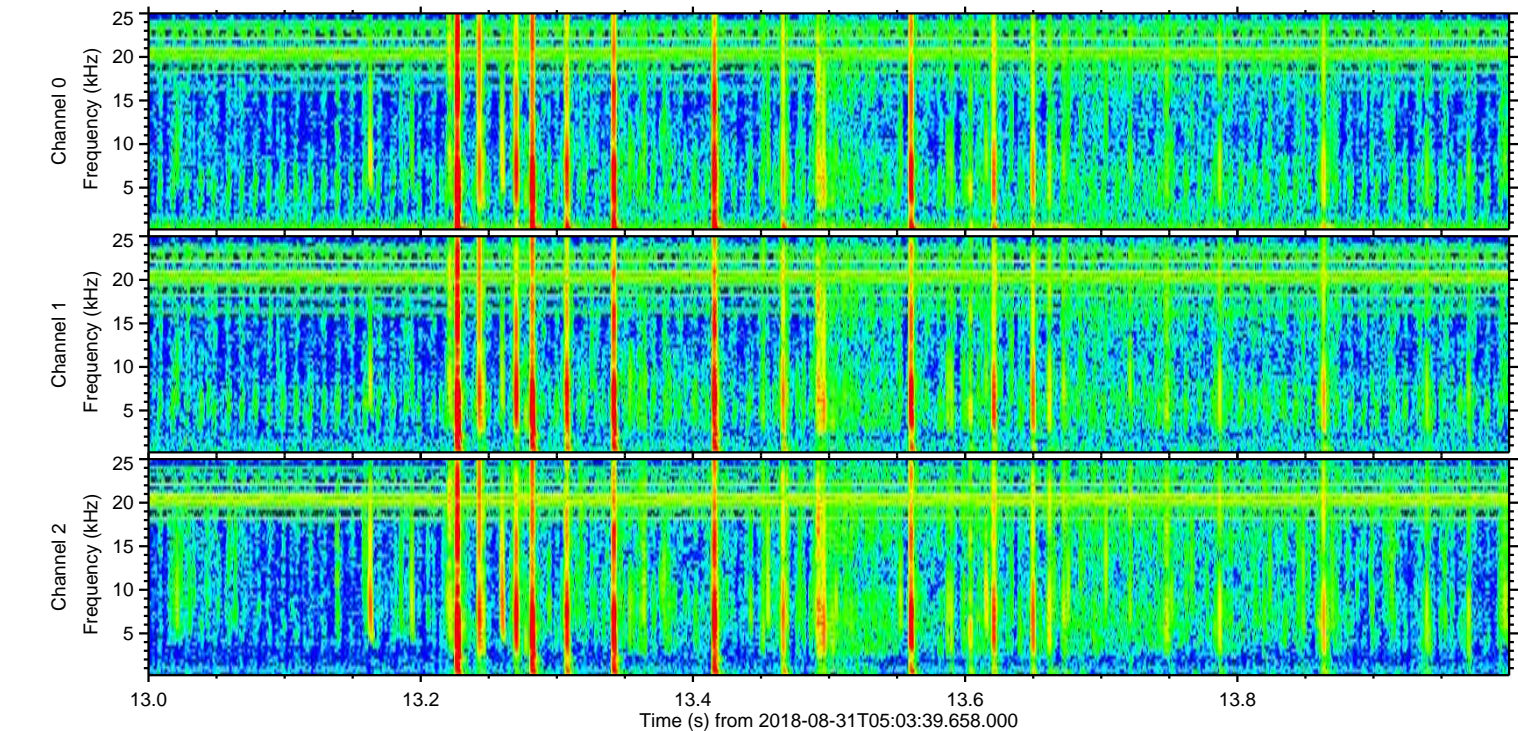
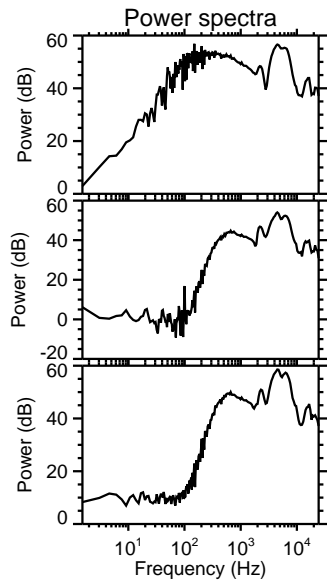
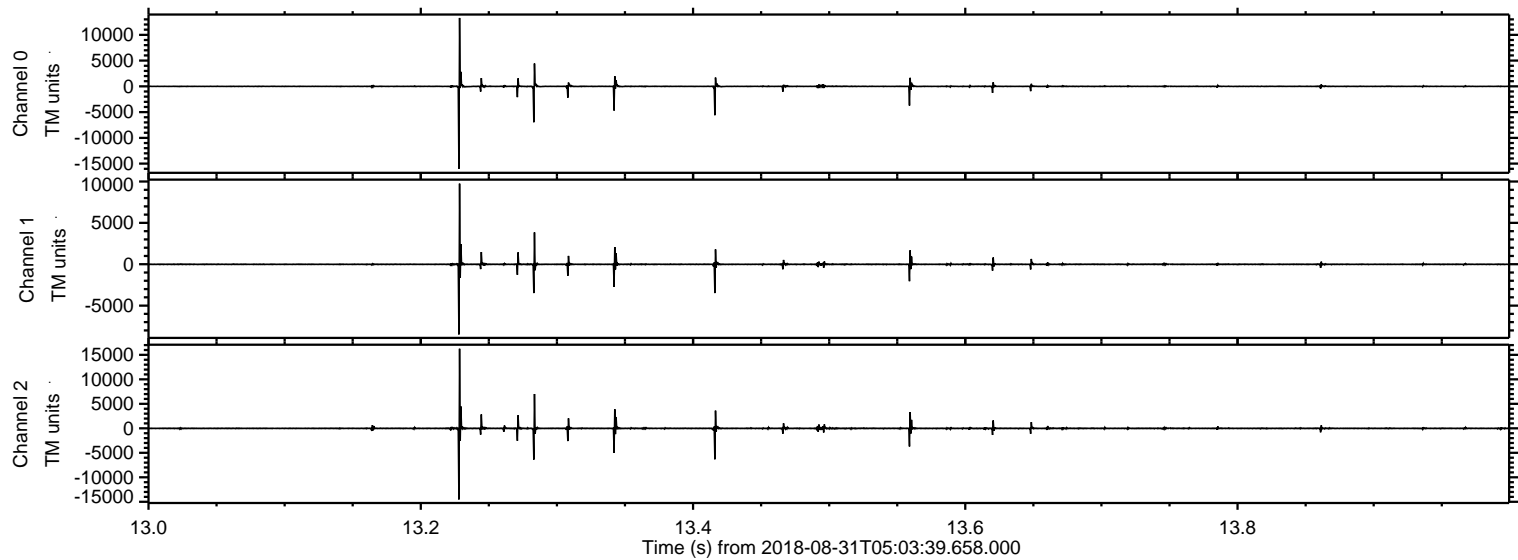


ELMAVAN 3D WAVEFORMS (Measured data sampled at 50 kHz) 51000 packets of 144 samples from 2018-08-31T05:03:39.658.000. Part 107/147

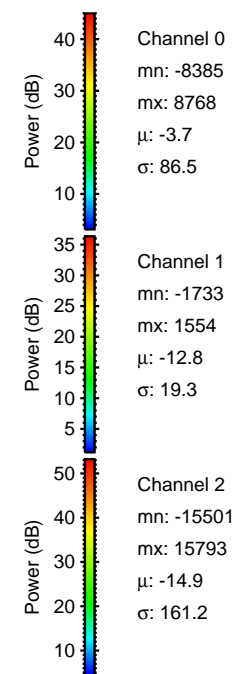
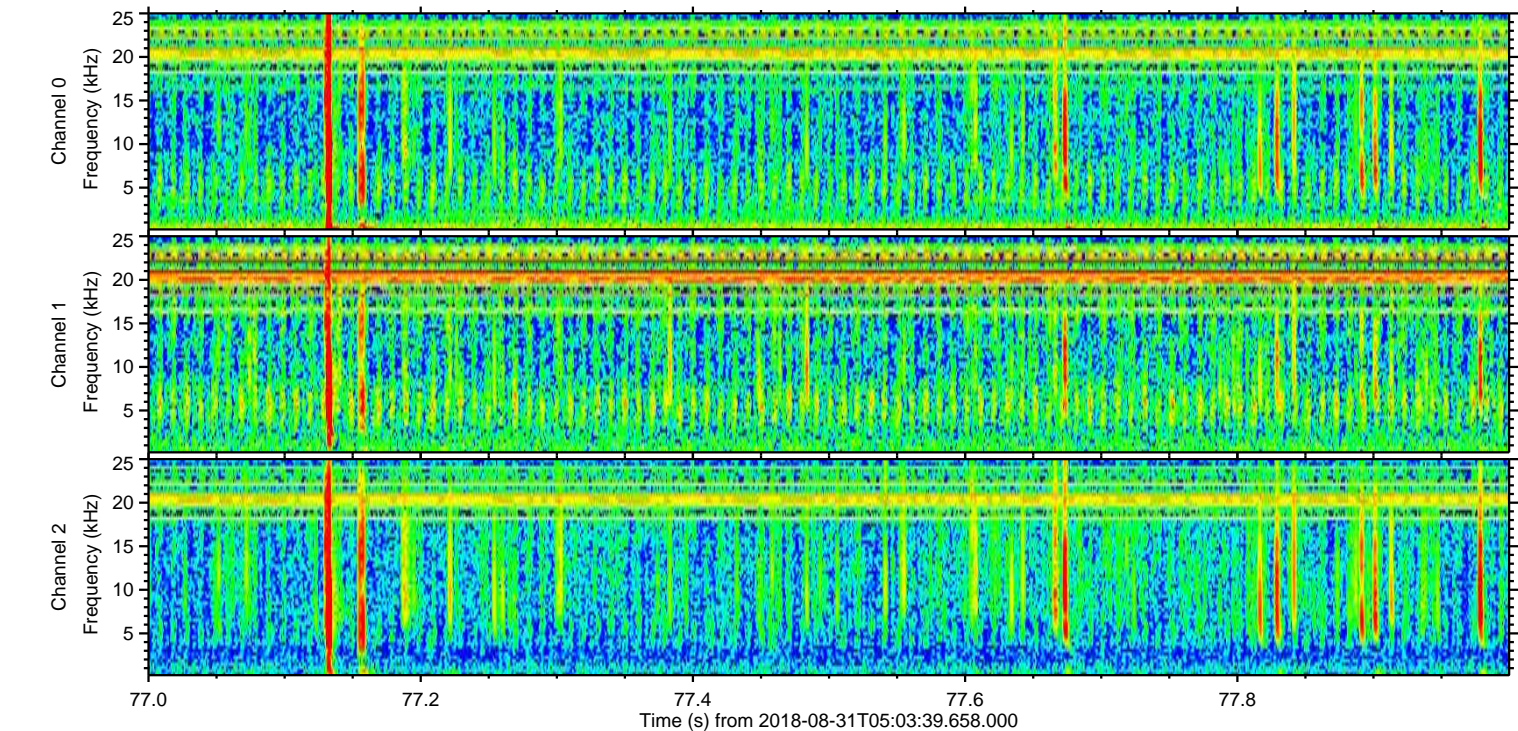
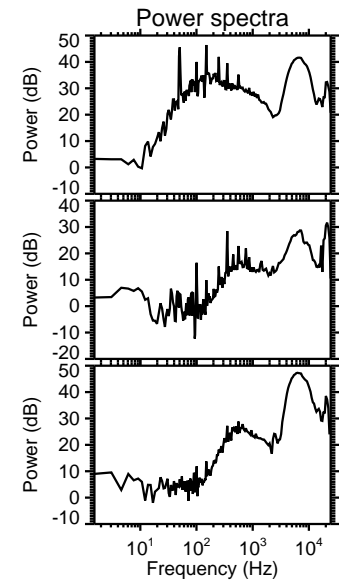
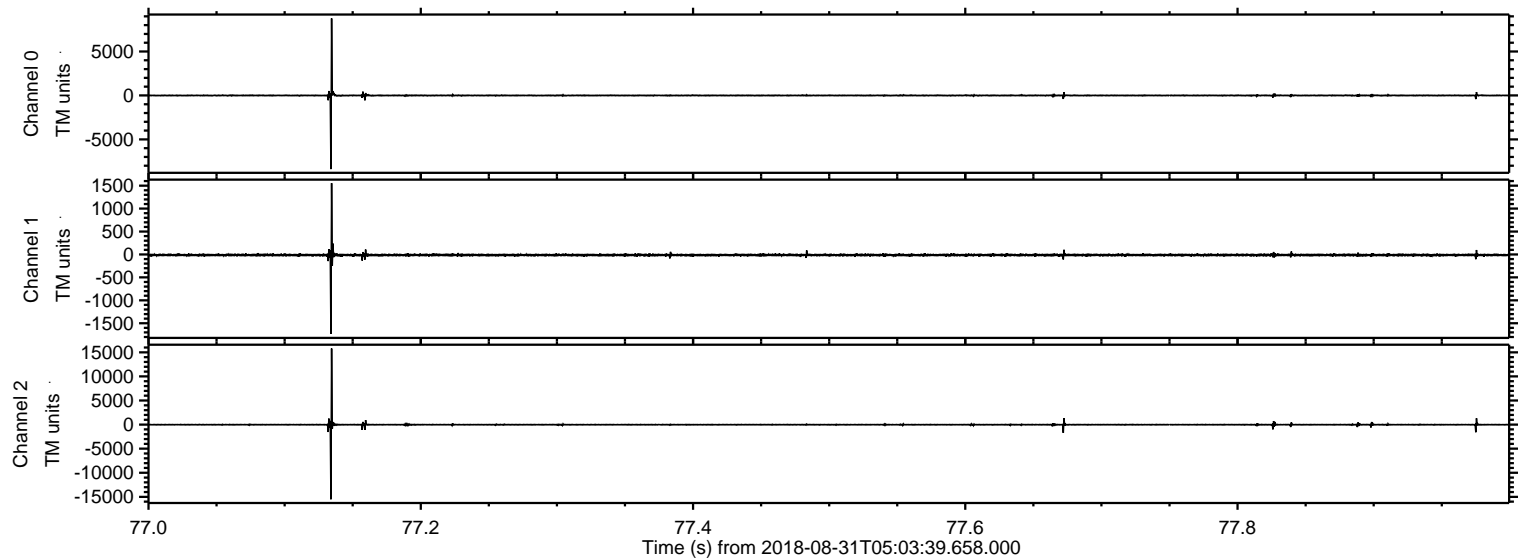
Processed Fri Aug 31 07:11:25 2018 by ELM ver.2012-10-06 from 001__elm20180831_050338__dat00.bin



Processed Fri Aug 31 07:11:26 2018 by ELM ver.2012-10-06 from 001__elm20180831_050338__dat00.bin

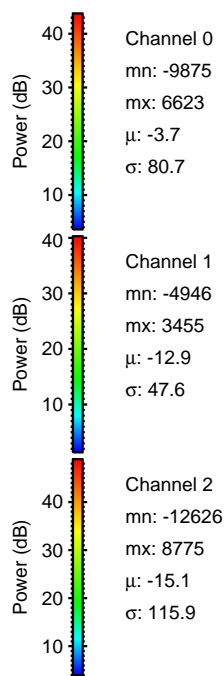
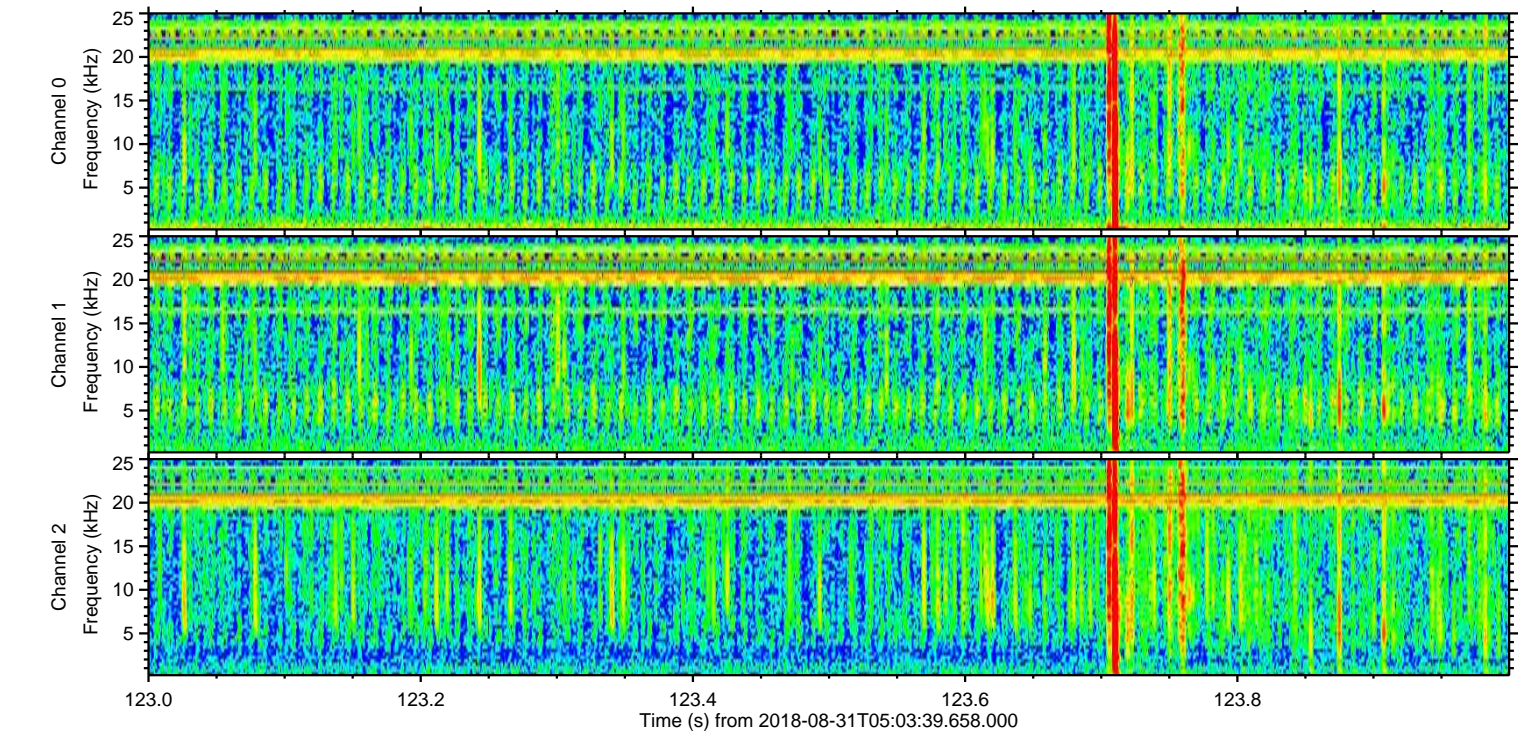
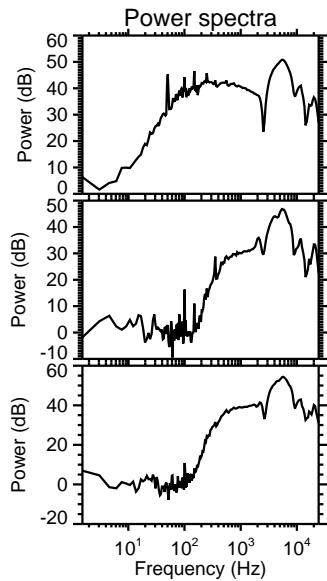
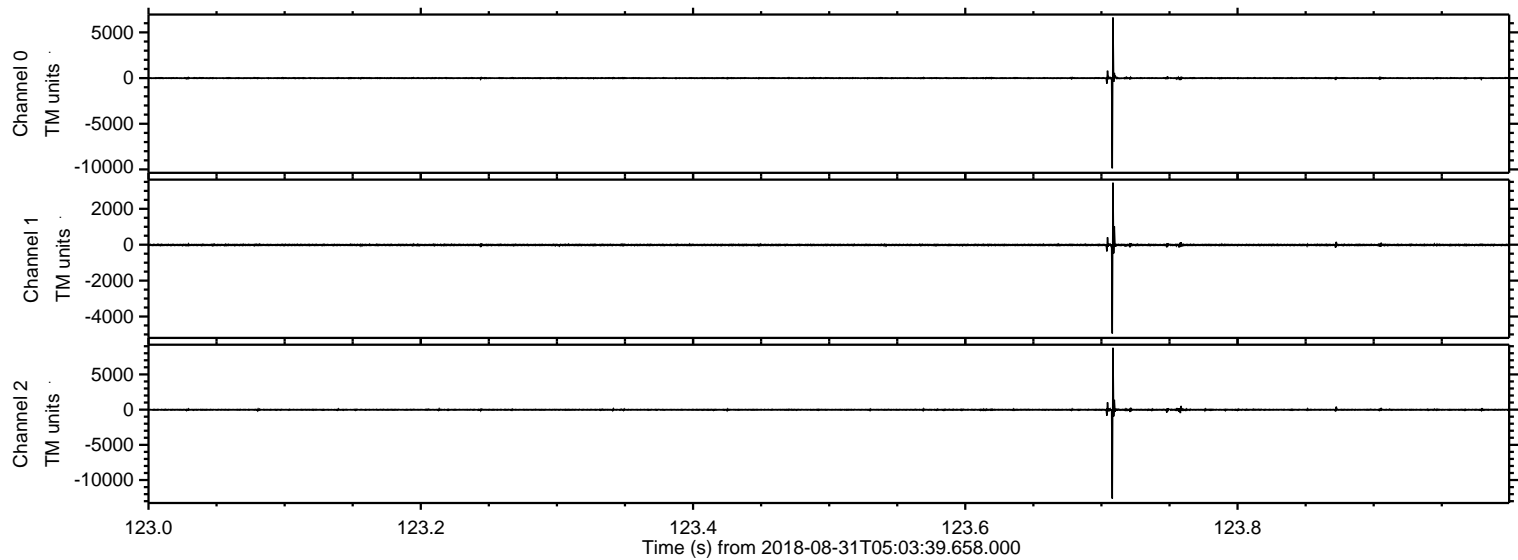


Processed Fri Aug 31 07:11:27 2018 by ELM ver.2012-10-06 from 001__elm20180831_050338__dat00.bin

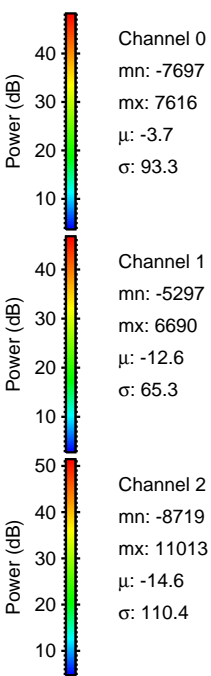
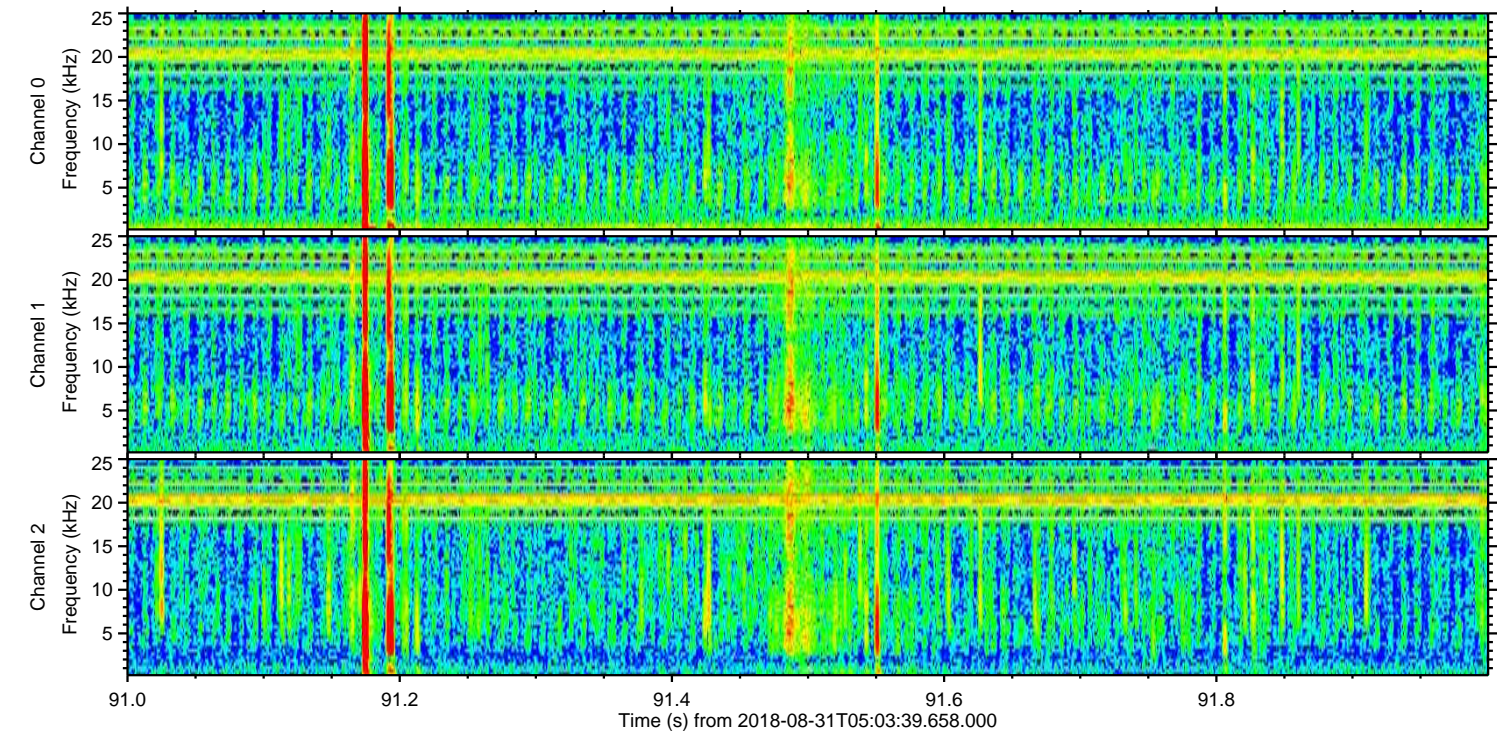
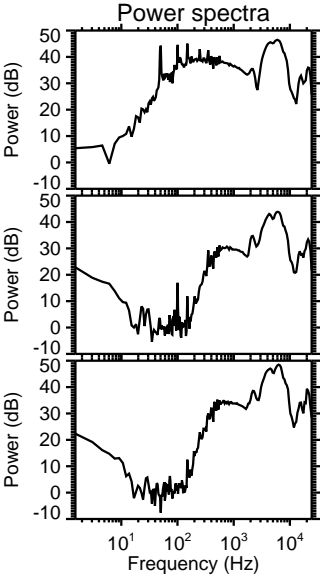
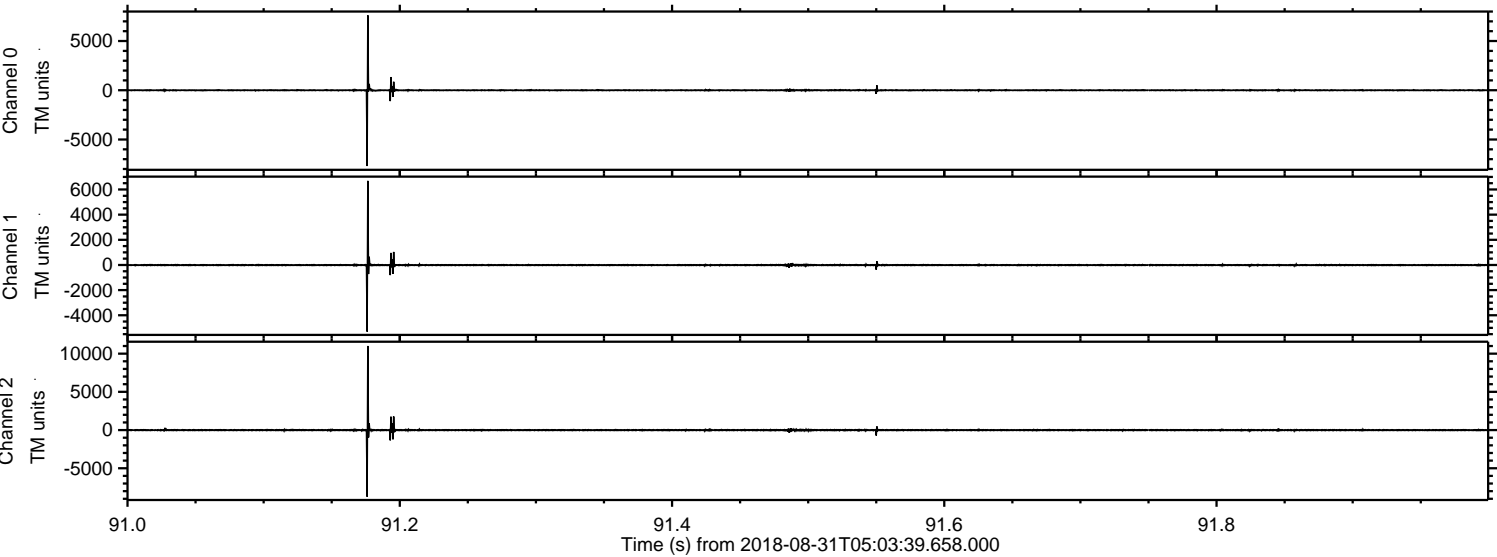


ELMAVAN 3D WAVEFORMS (Measured data sampled at 50 kHz) 51000 packets of 144 samples from 2018-08-31T05:03:39.658.000. Part 124/147

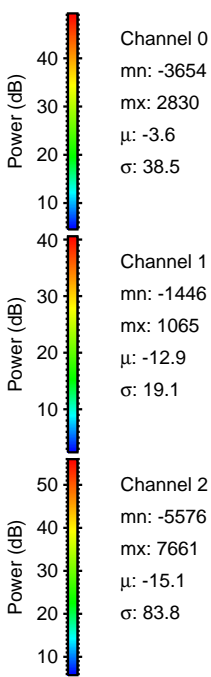
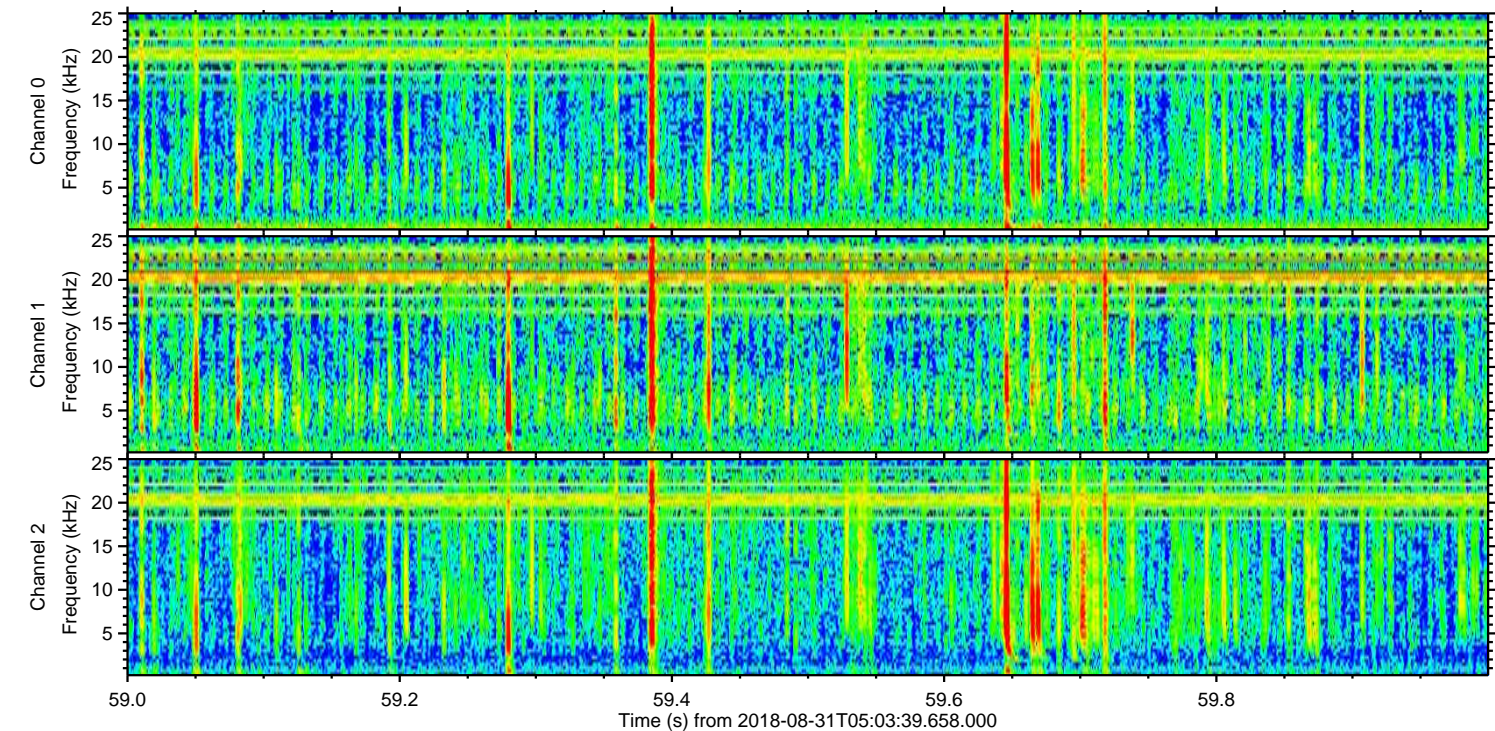
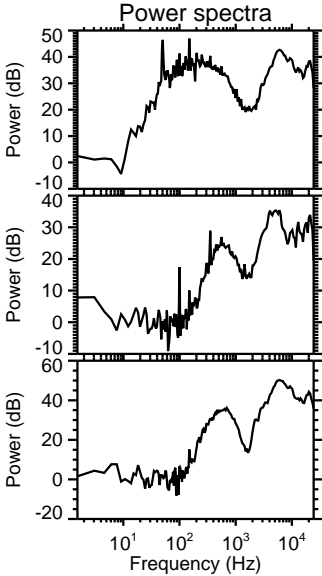
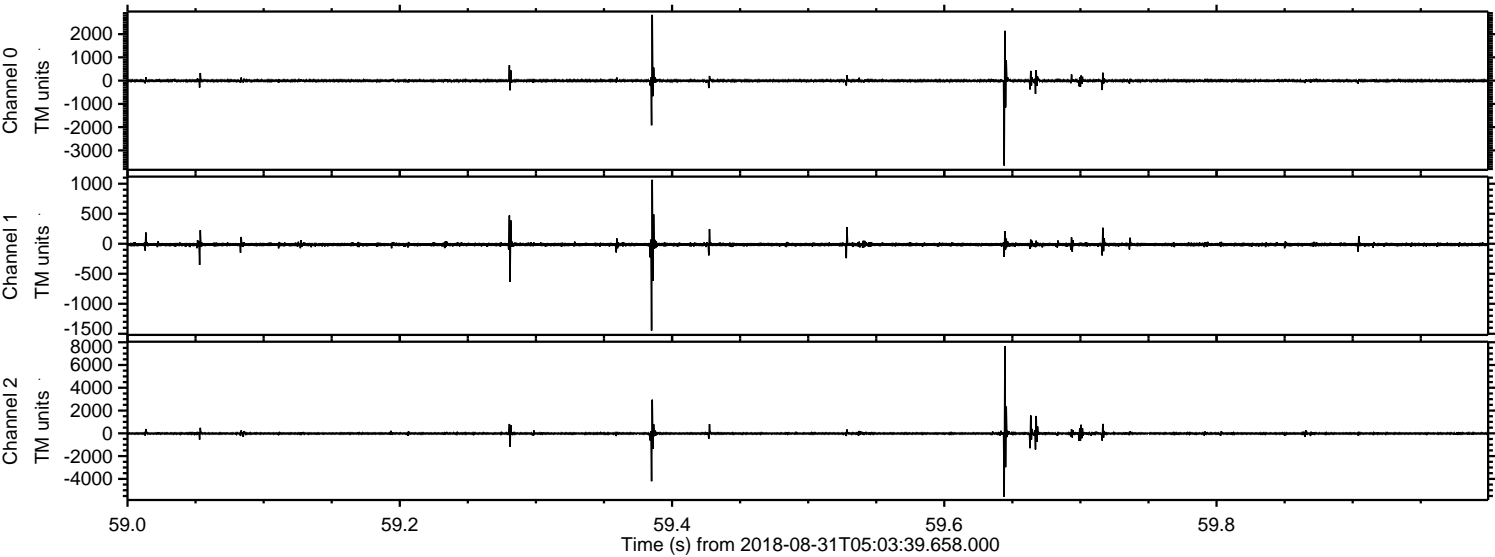
Processed Fri Aug 31 07:11:27 2018 by ELM ver.2012-10-06 from 001__elm20180831_050338__dat00.bin



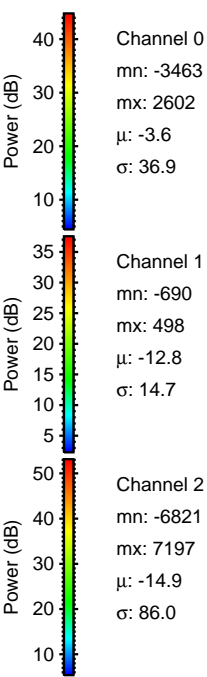
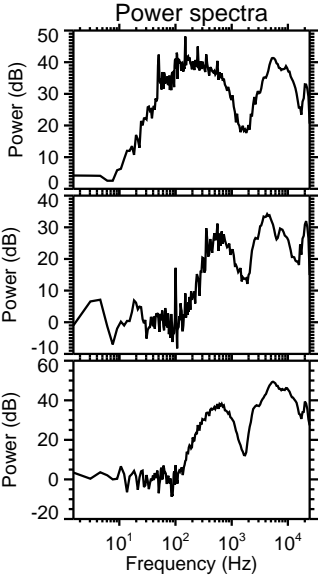
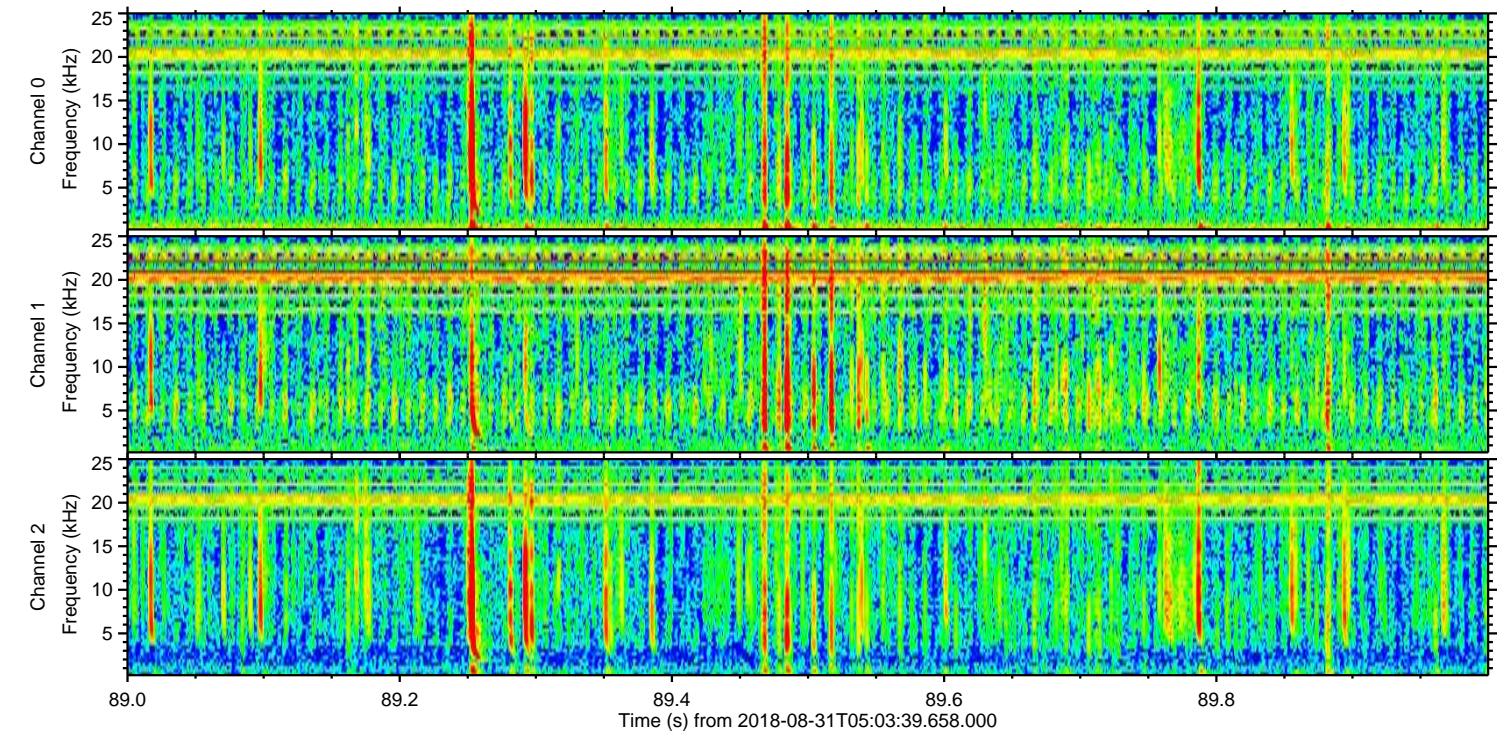
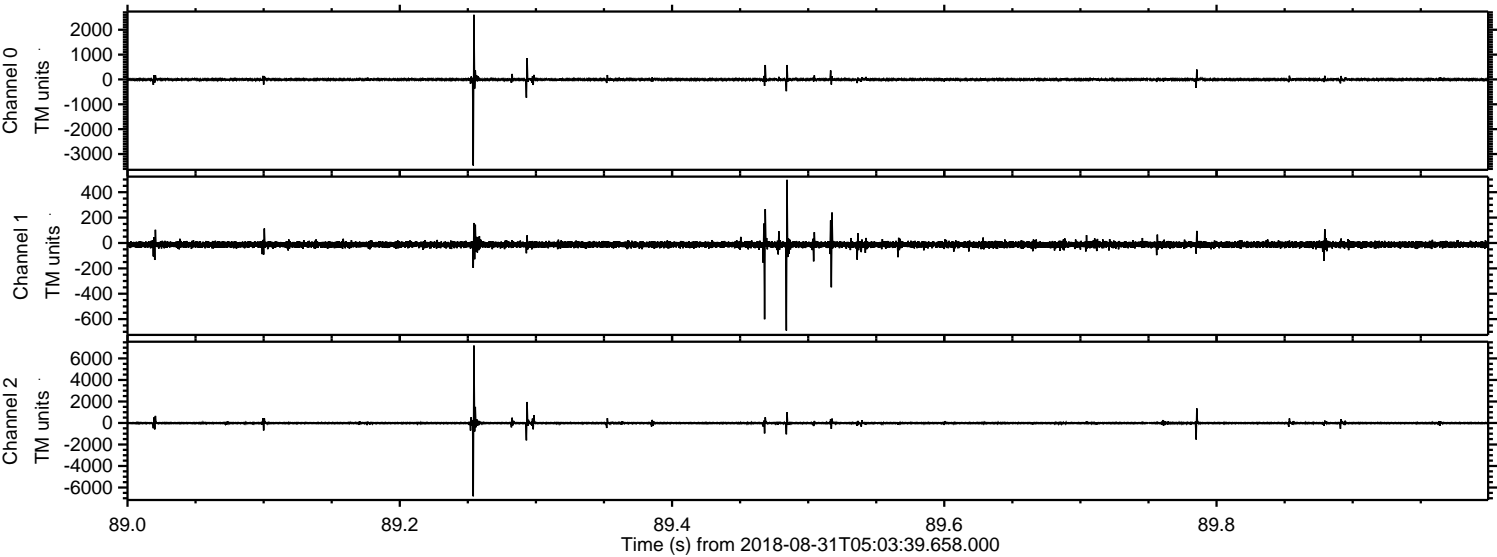
Processed Fri Aug 31 07:11:28 2018 by ELM ver.2012-10-06 from 001__elm20180831_050338__dat00.bin



Processed Fri Aug 31 07:11:29 2018 by ELM ver.2012-10-06 from 001__elm20180831_050338__dat00.bin

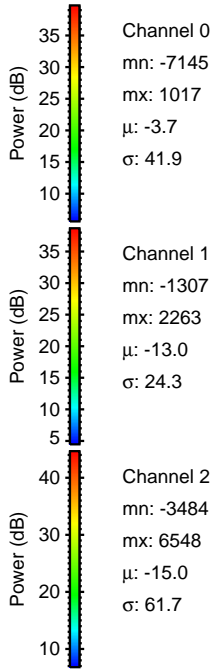
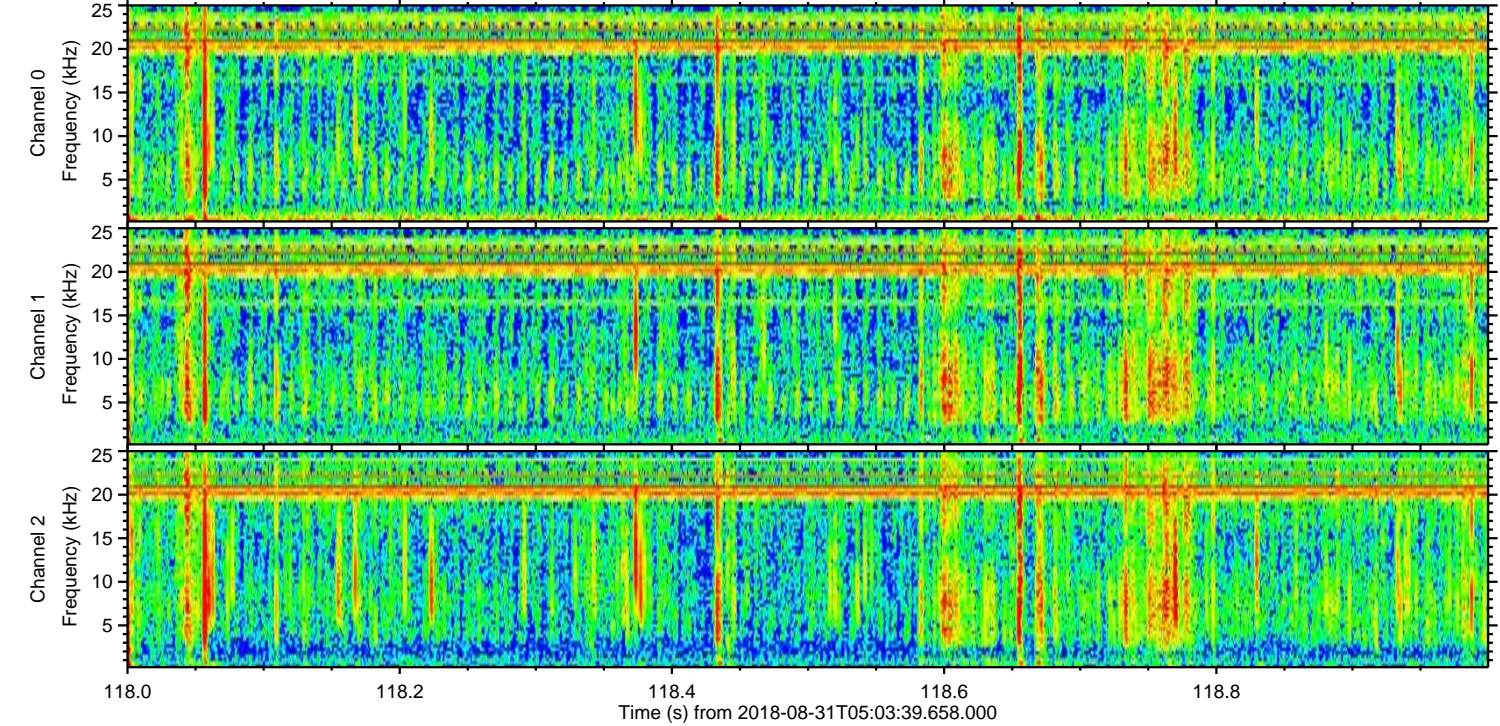
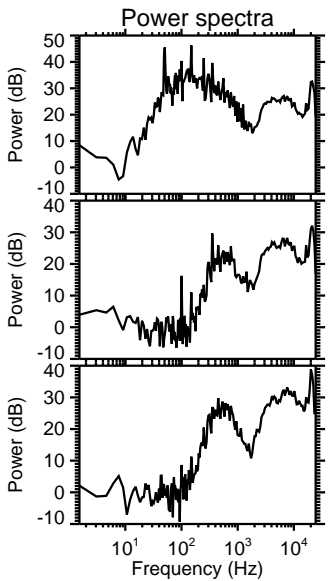
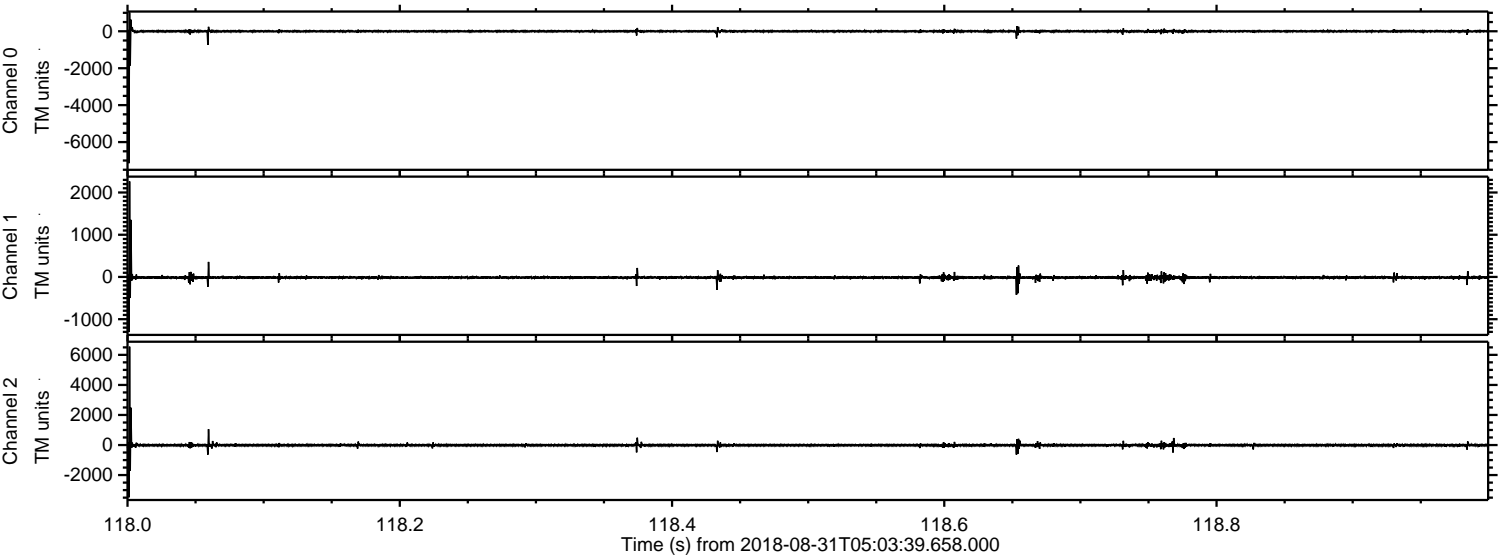


Processed Fri Aug 31 07:11:29 2018 by ELM ver.2012-10-06 from 001__elm20180831_050338__dat00.bin

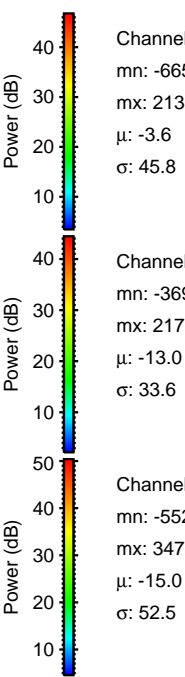
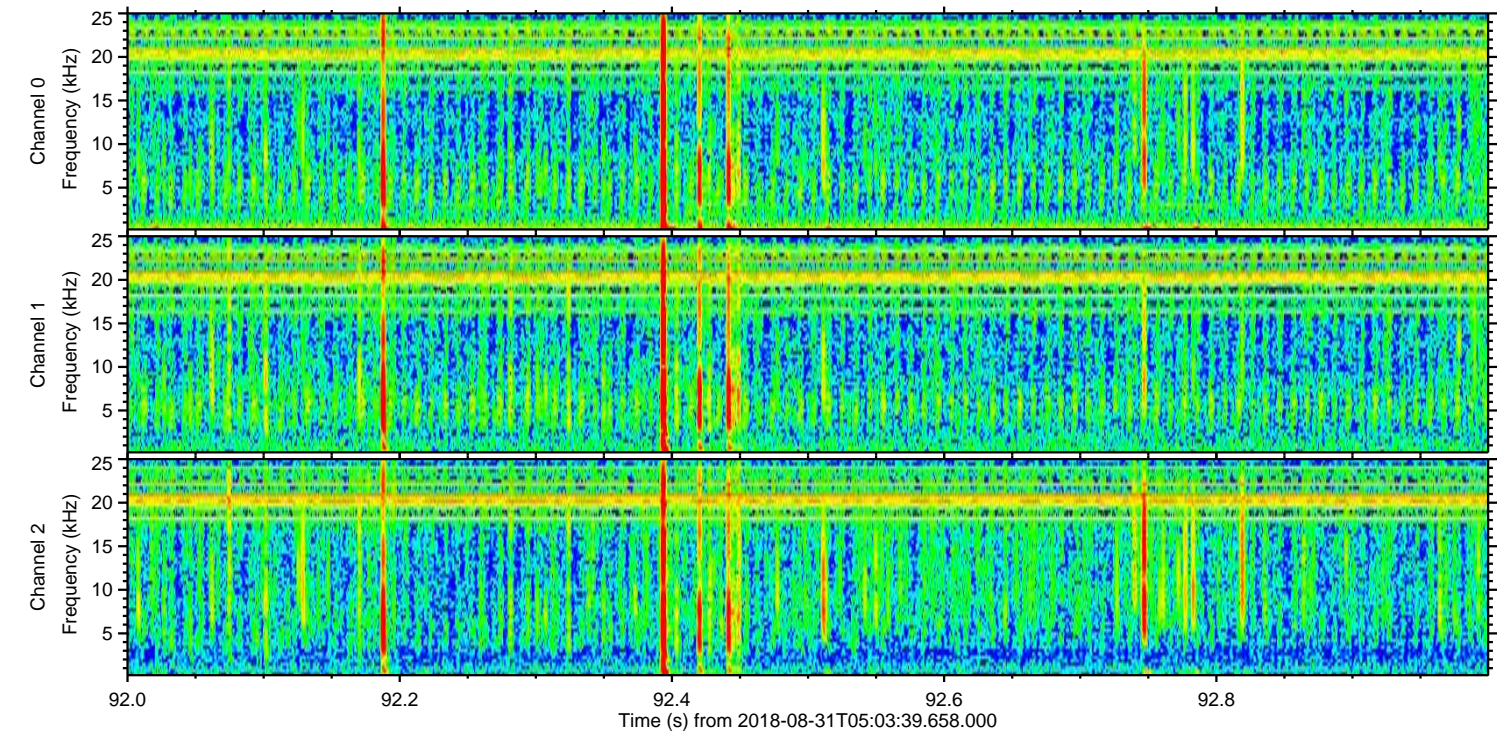
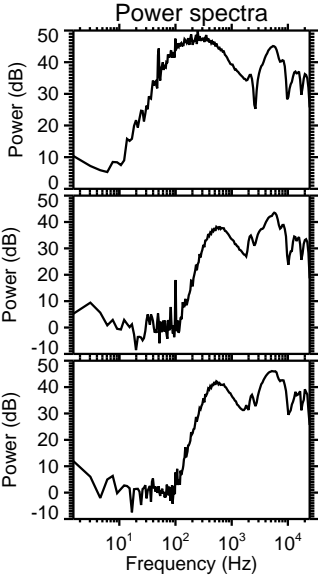
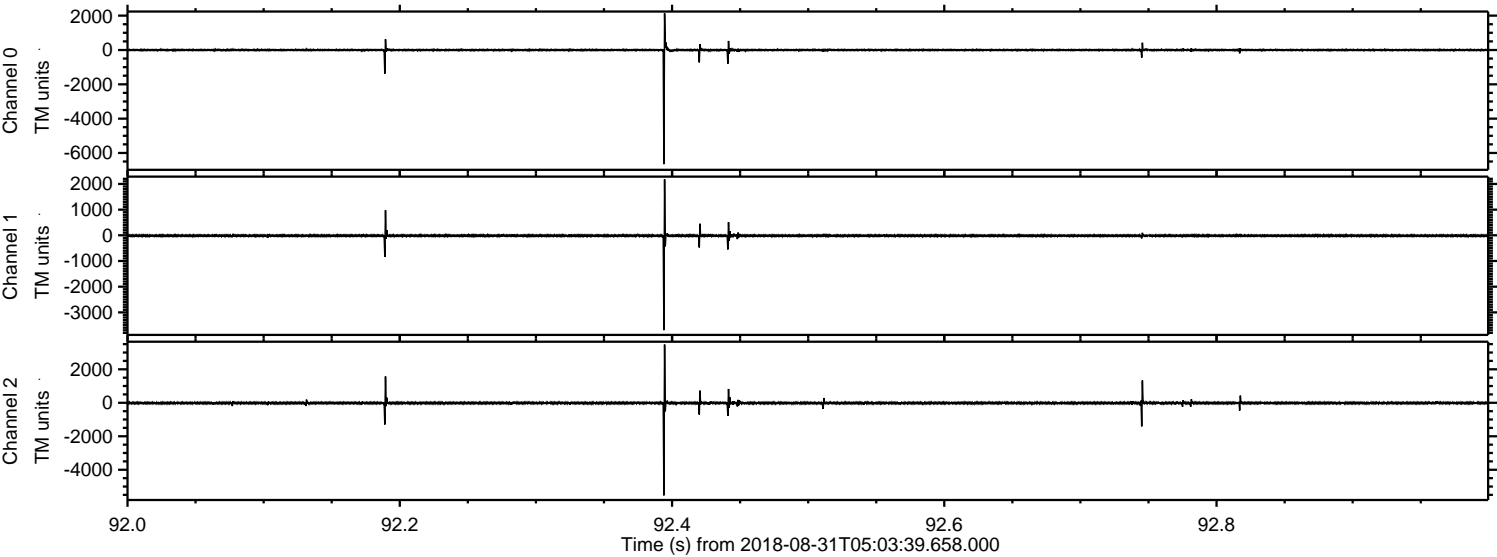


ELMAVAN 3D WAVEFORMS (Measured data sampled at 50 kHz) 51000 packets of 144 samples from 2018-08-31T05:03:39.658.000. Part 119/147

Processed Fri Aug 31 07:11:30 2018 by ELM ver.2012-10-06 from 001__elm20180831_050338__dat00.bin



Processed Fri Aug 31 07:11:31 2018 by ELM ver.2012-10-06 from 001__elm20180831_050338__dat00.bin



Channel 0
mn: -6650
mx: 2133
 μ : -3.6
 σ : 45.8

Channel 1
mn: -3694
mx: 2177
 μ : -13.0
 σ : 33.6

Channel 2
mn: -5529
mx: 3473
 μ : -15.0
 σ : 52.5

Processed Fri Aug 31 07:11:31 2018 by ELM ver.2012-10-06 from 001__elm20180831_050338__dat00.bin

