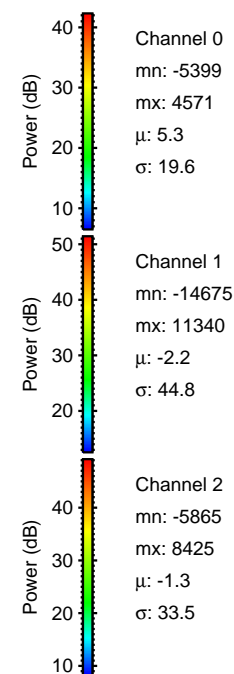
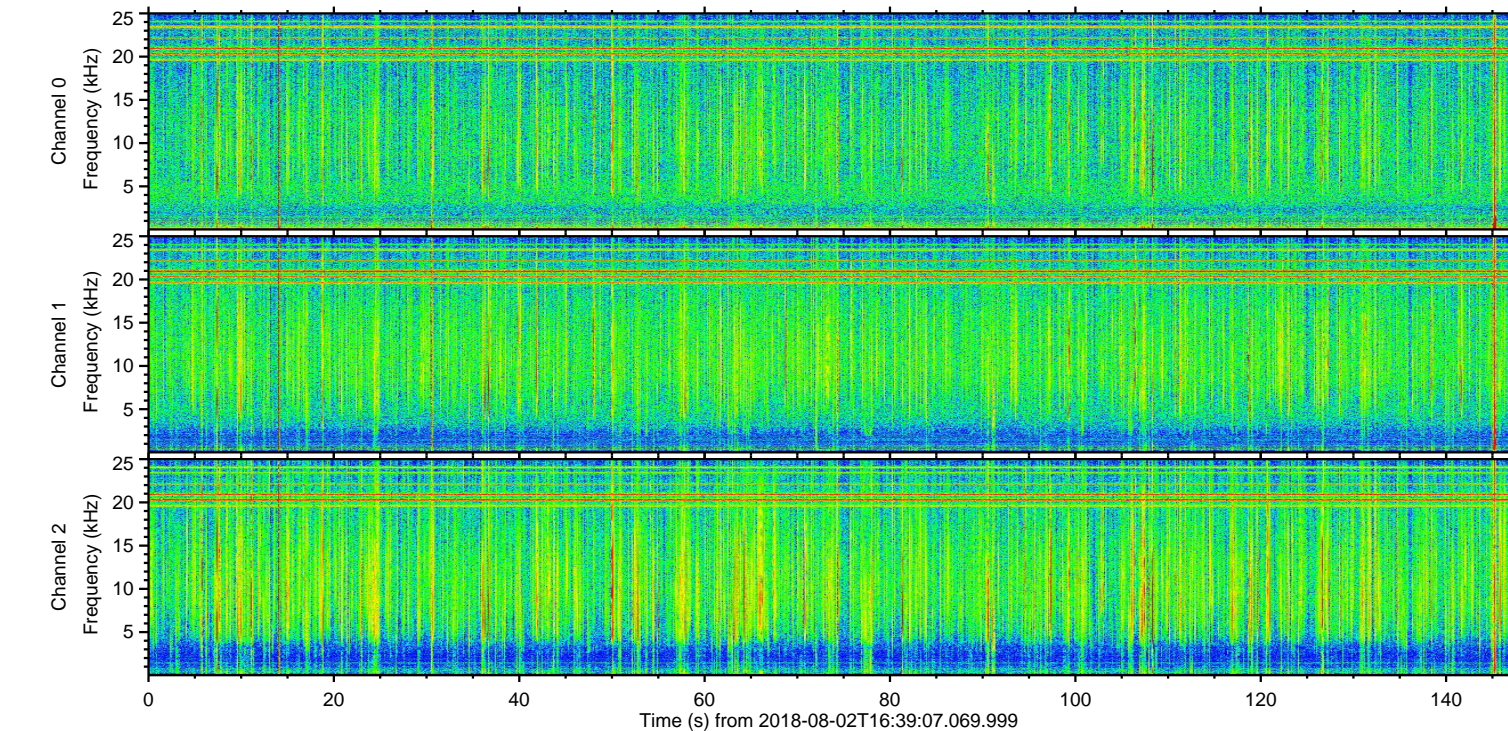
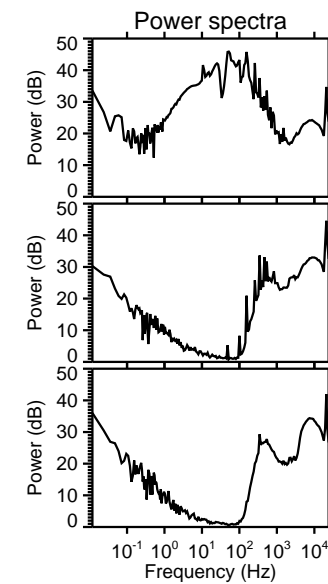
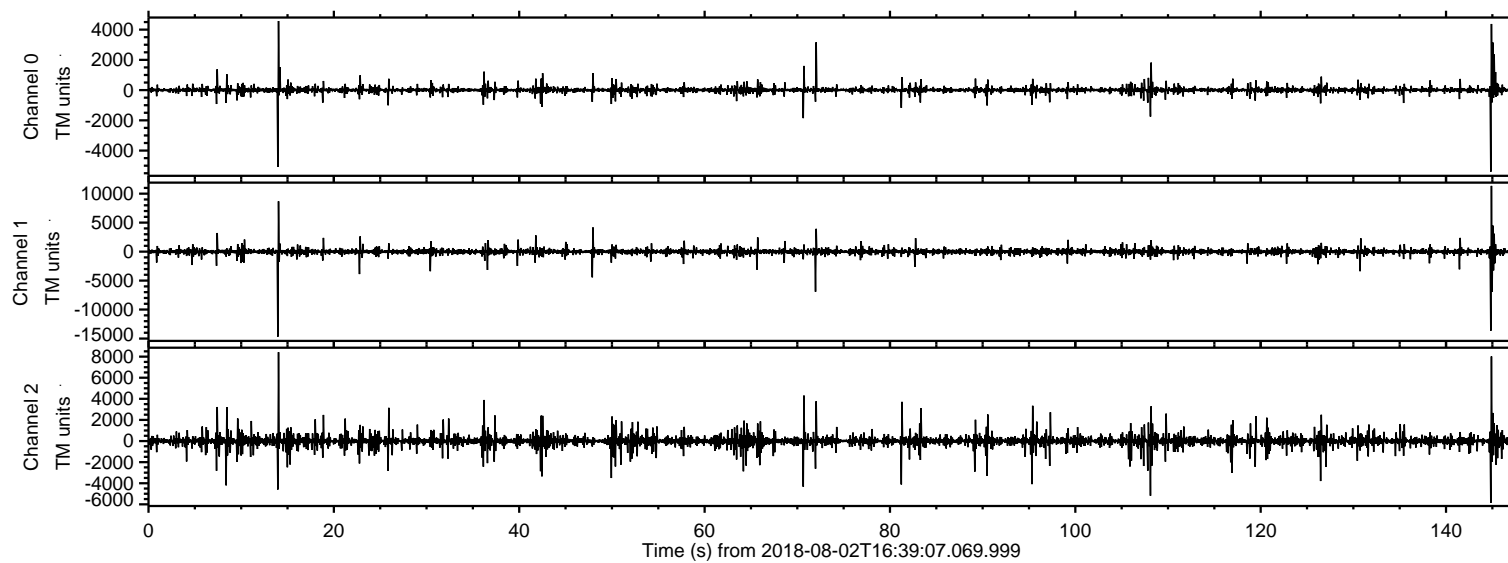


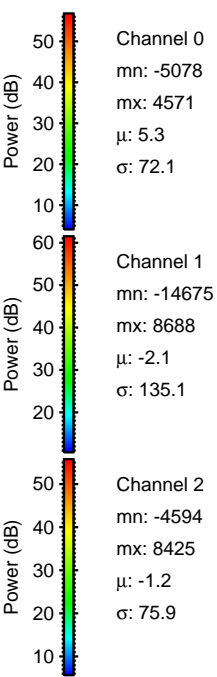
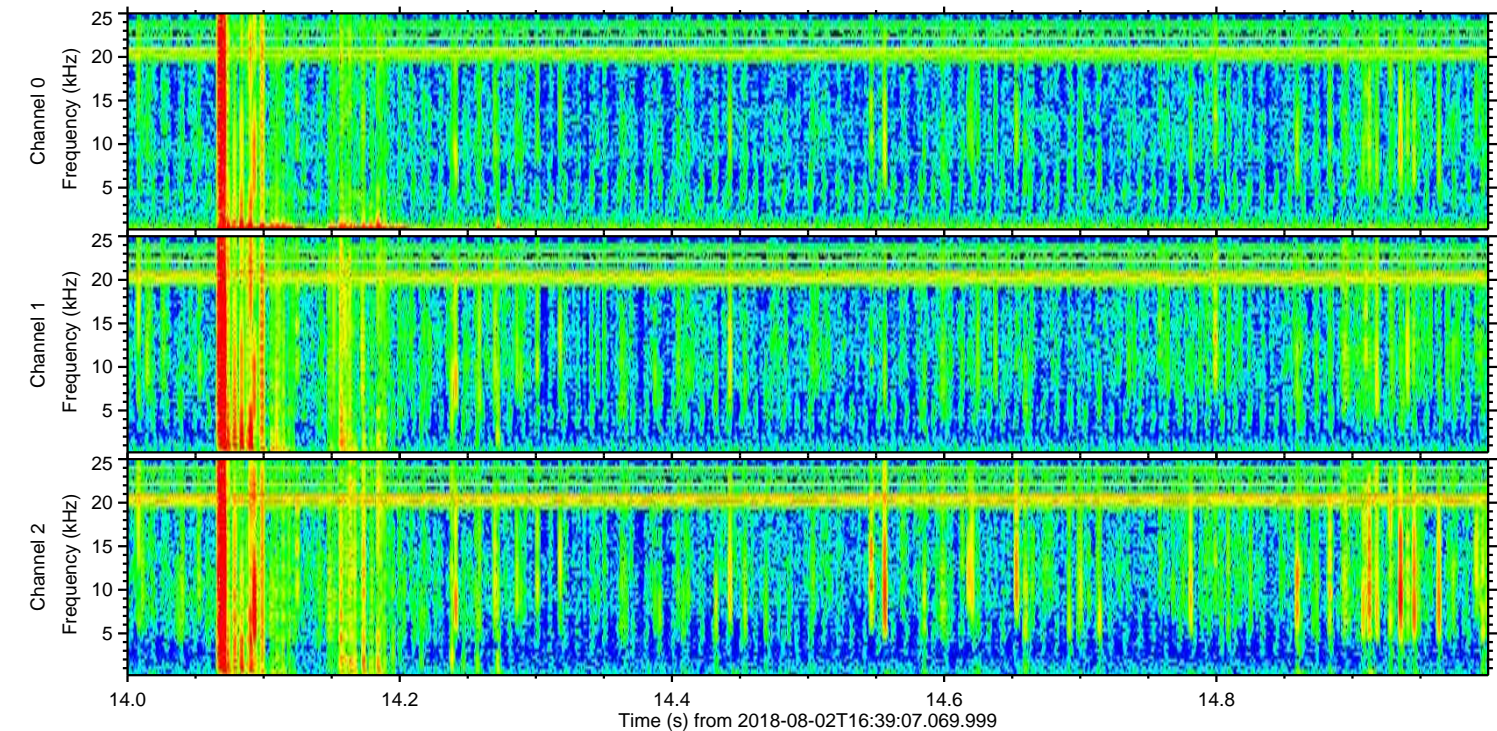
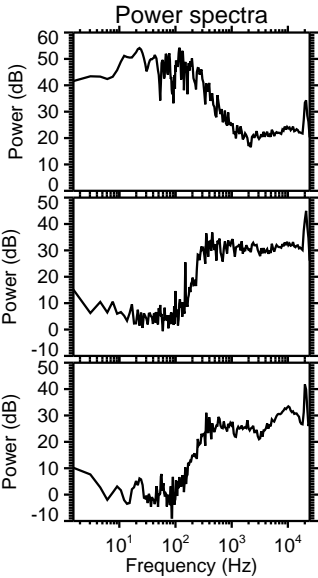
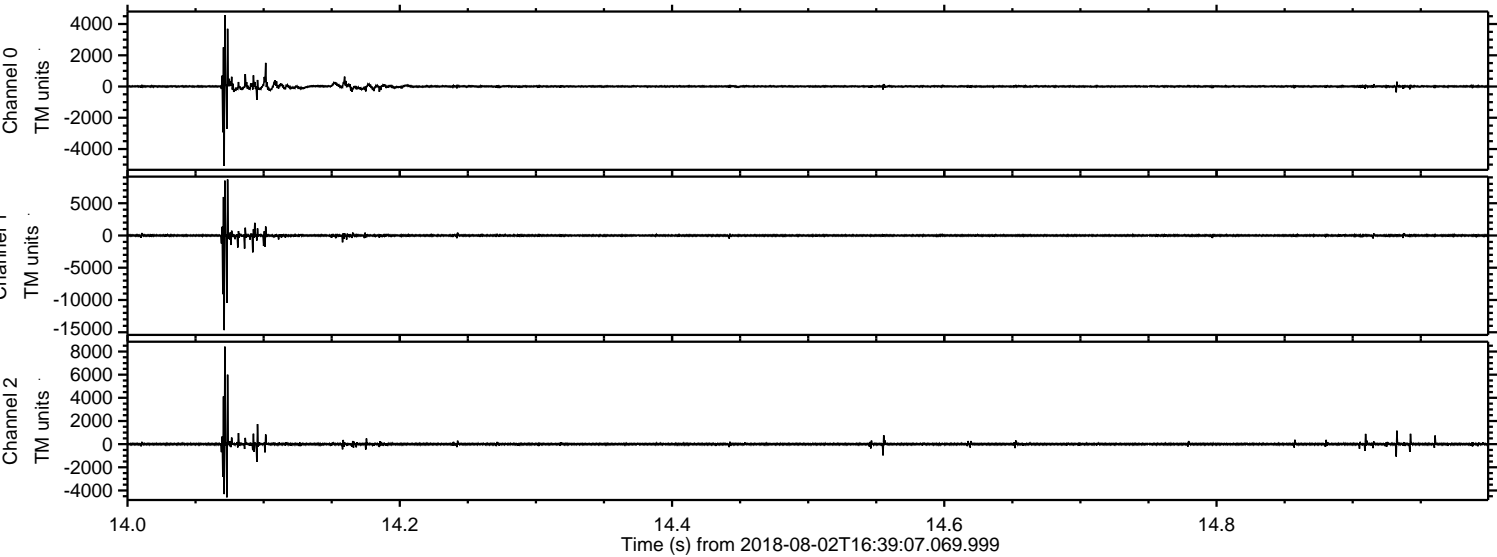
# ELMAVAN 3D WAVEFORMS (Measured data sampled at 50 kHz) 51000 packets of 144 samples from 2018-08-02T16:39:07.069.999.

Processed Thu Aug 2 18:46:30 2018 by ELM ver.2012-10-06 from 001\_\_elm20180802\_163906\_\_dat00.bin





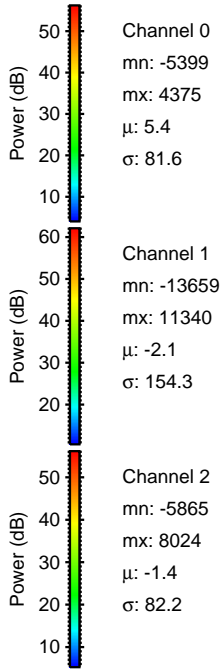
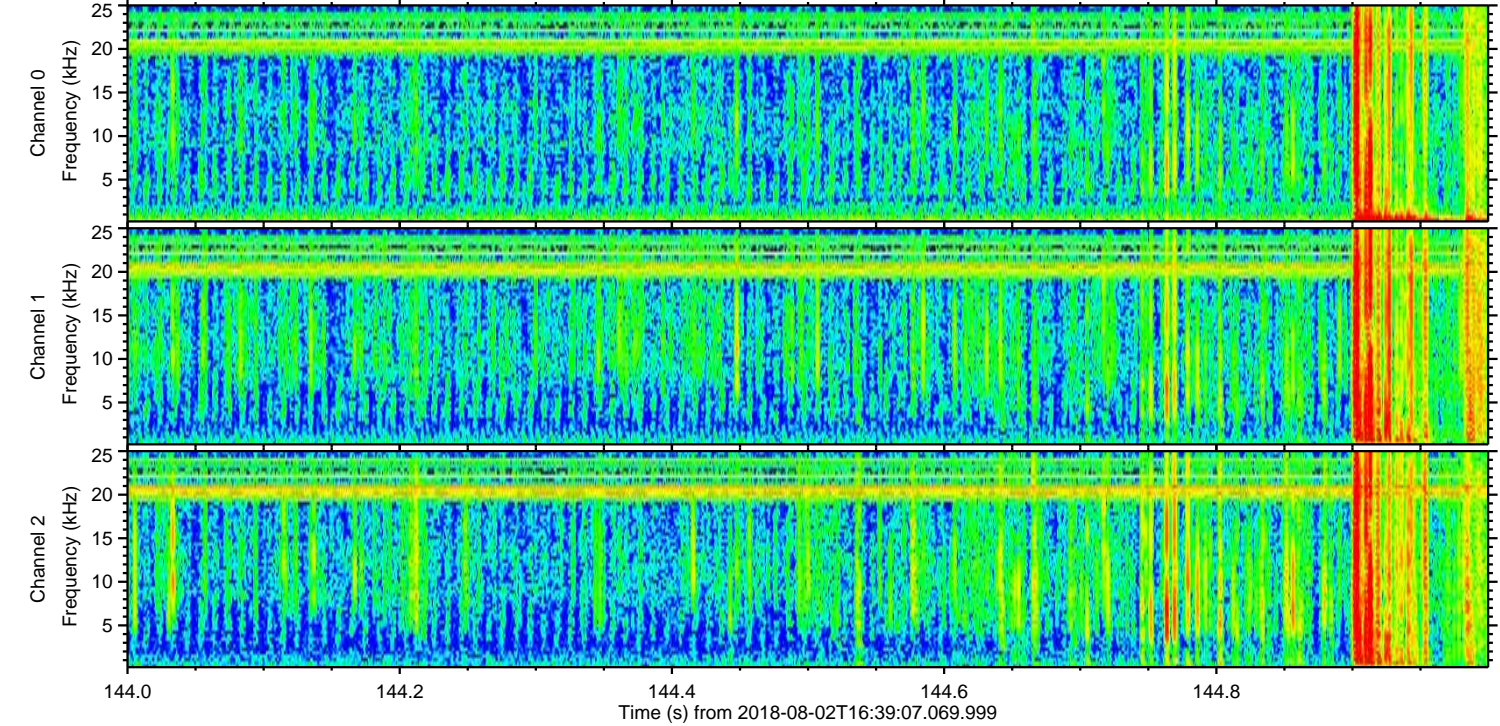
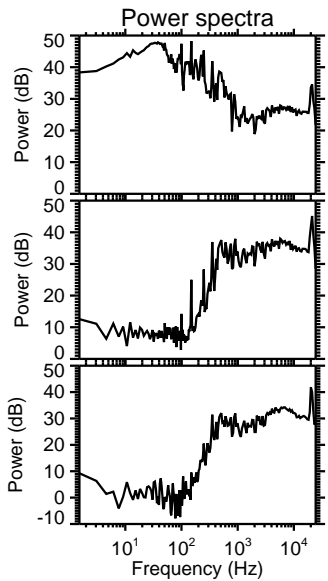
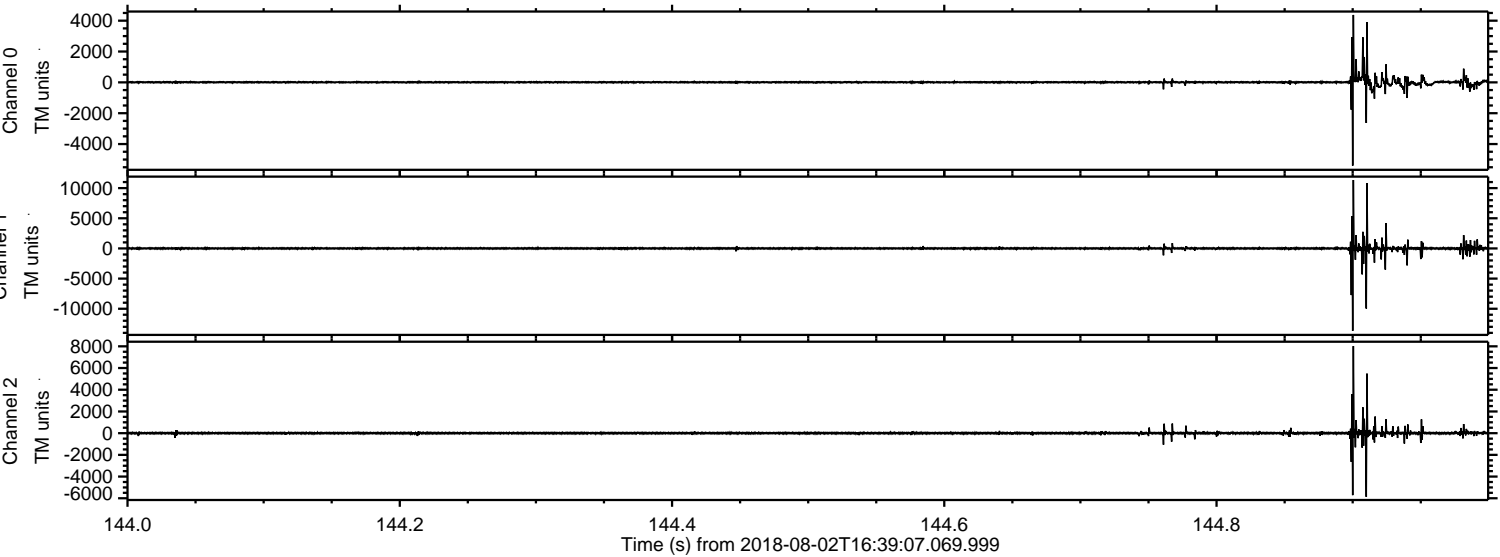
Processed Thu Aug 2 18:46:36 2018 by ELM ver.2012-10-06 from 001\_\_elm20180802\_163906\_\_dat00.bin





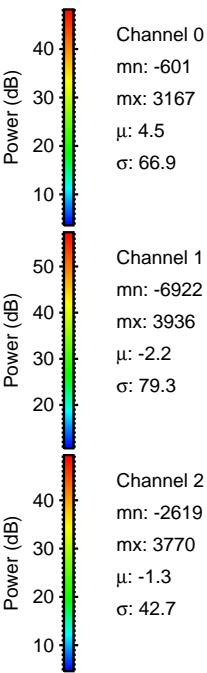
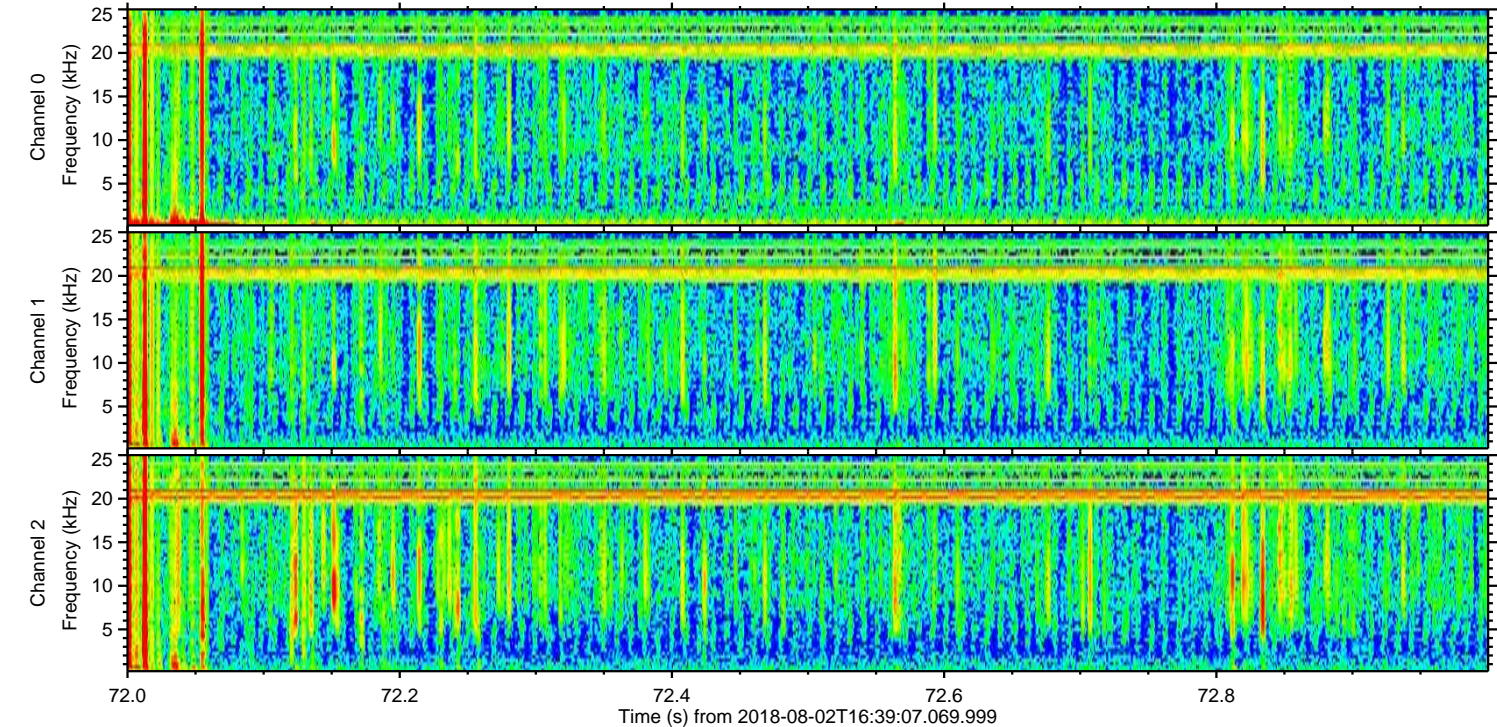
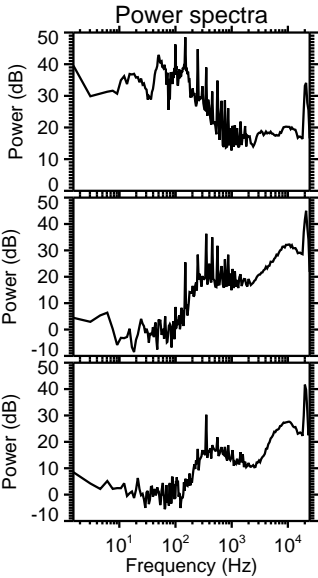
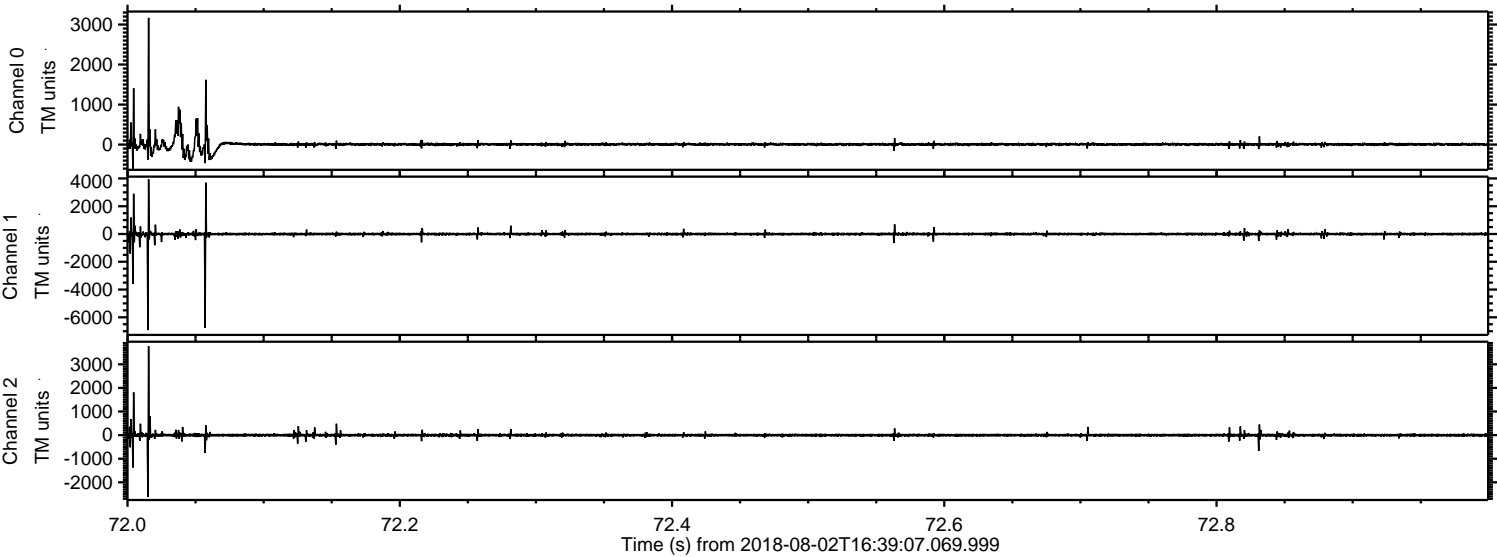
ELMAVAN 3D WAVEFORMS (Measured data sampled at 50 kHz) 51000 packets of 144 samples from 2018-08-02T16:39:07.069.999. Part 145/147

Processed Thu Aug 2 18:46:37 2018 by ELM ver.2012-10-06 from 001\_\_elm20180802\_163906\_\_dat00.bin





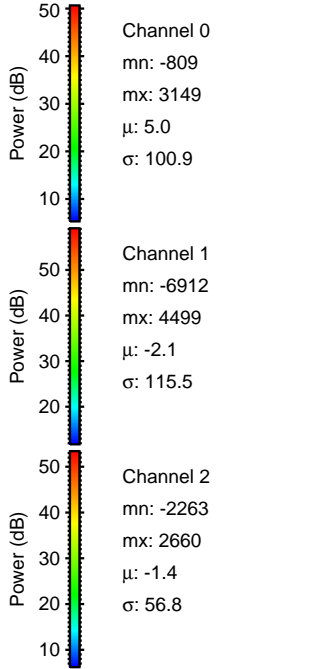
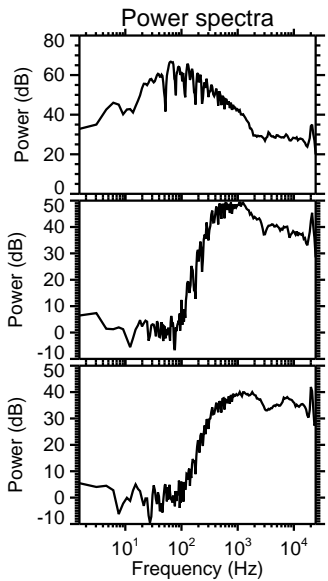
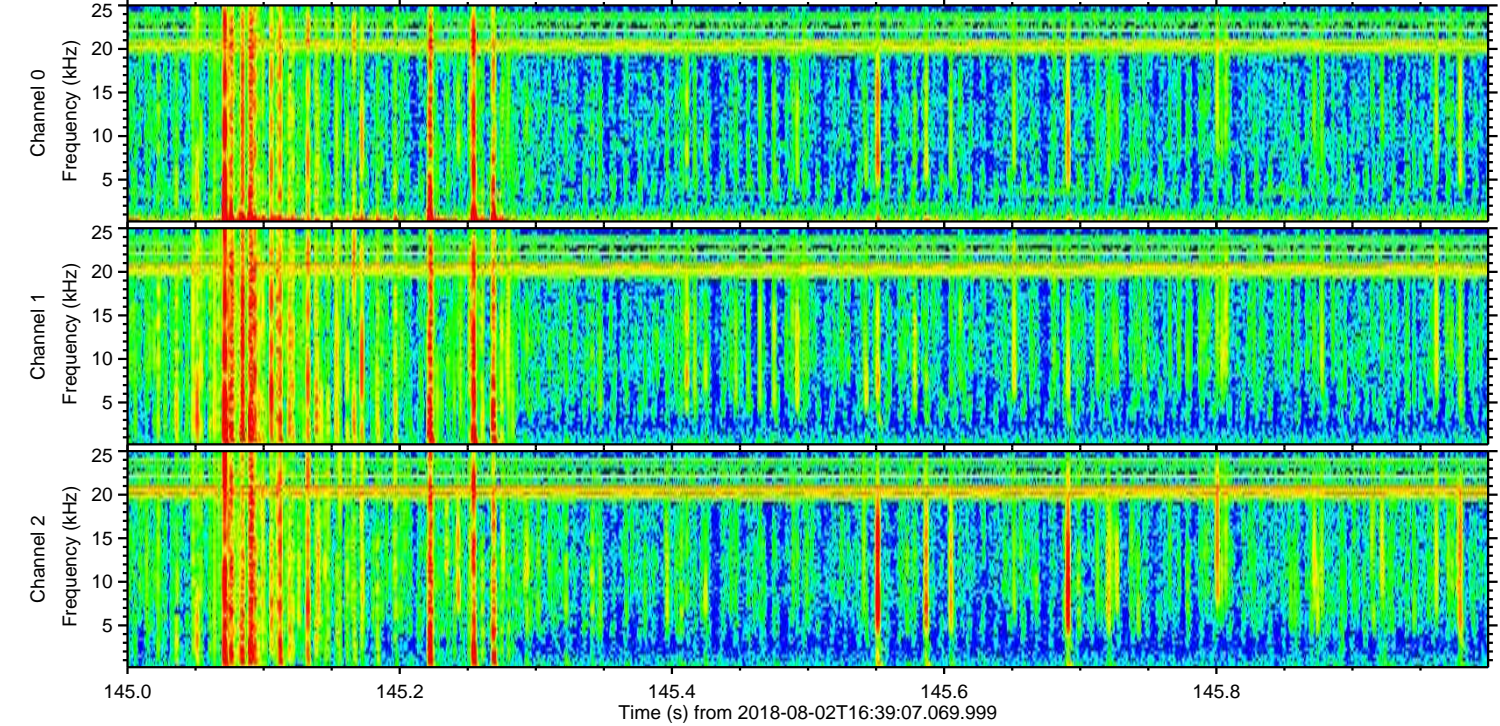
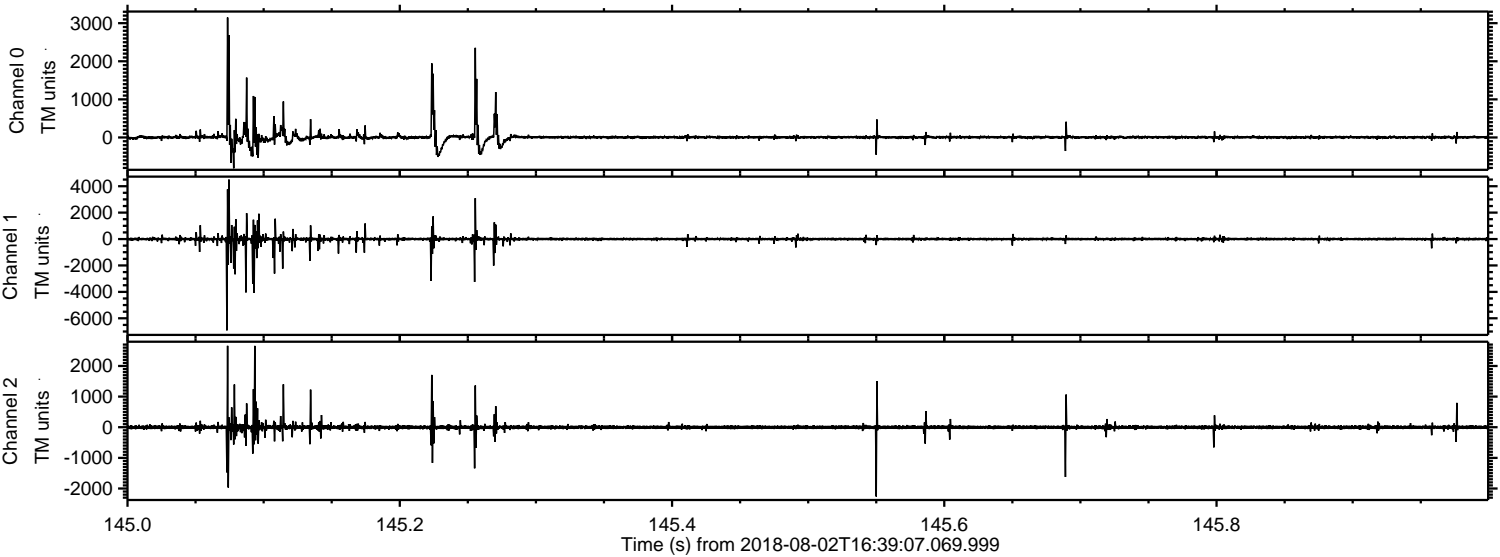
Processed Thu Aug 2 18:46:38 2018 by ELM ver.2012-10-06 from 001\_\_elm20180802\_163906\_\_dat00.bin





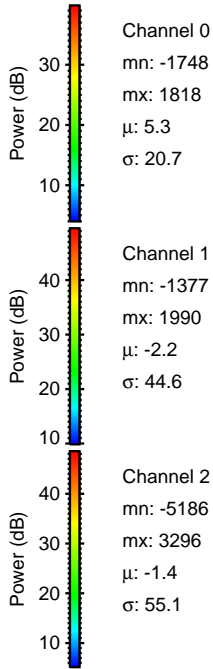
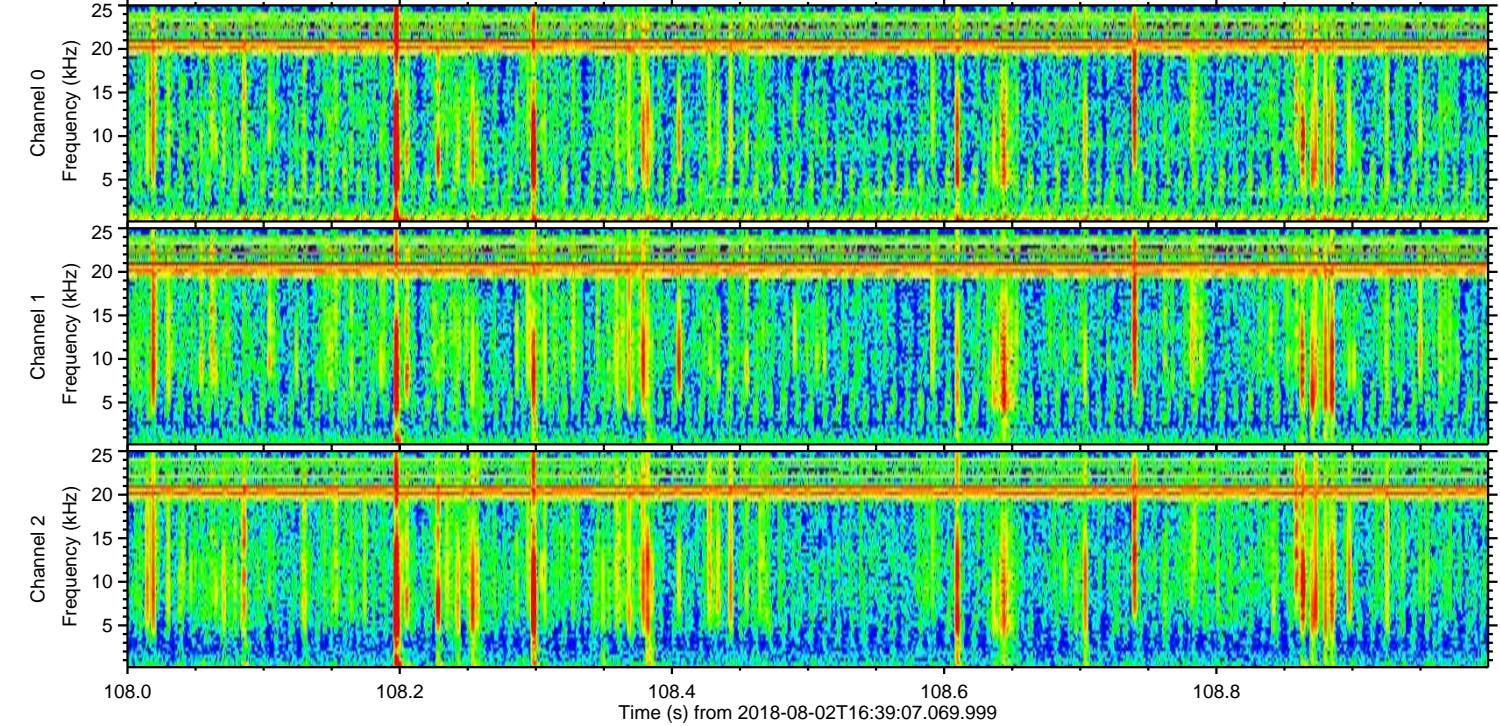
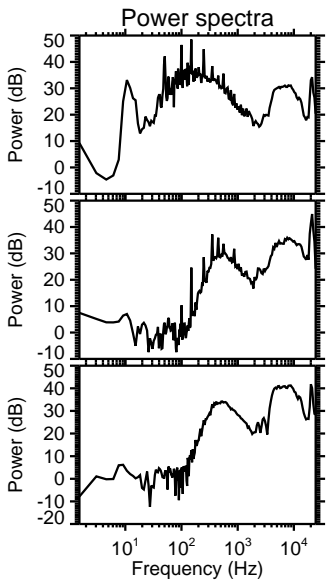
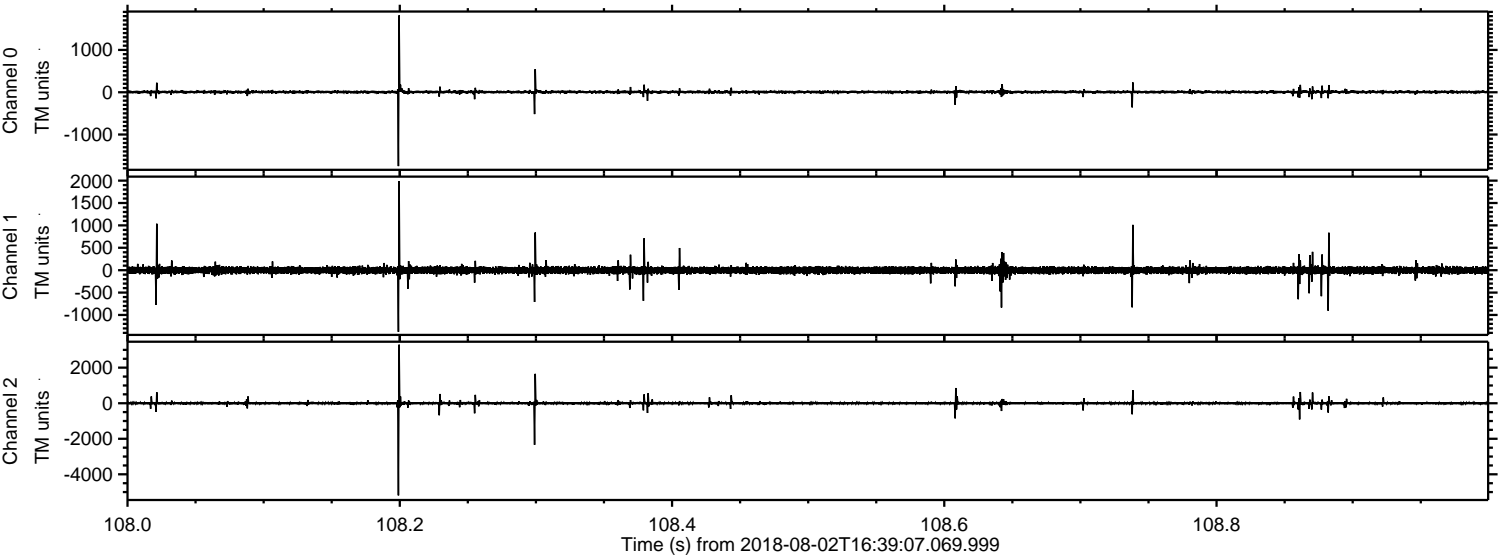
ELMAVAN 3D WAVEFORMS (Measured data sampled at 50 kHz) 51000 packets of 144 samples from 2018-08-02T16:39:07.069.999. Part 146/147

Processed Thu Aug 2 18:46:39 2018 by ELM ver.2012-10-06 from 001\_\_elm20180802\_163906\_\_dat00.bin



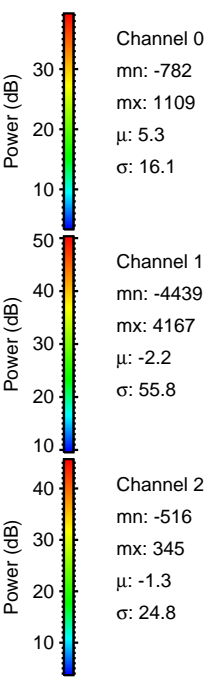
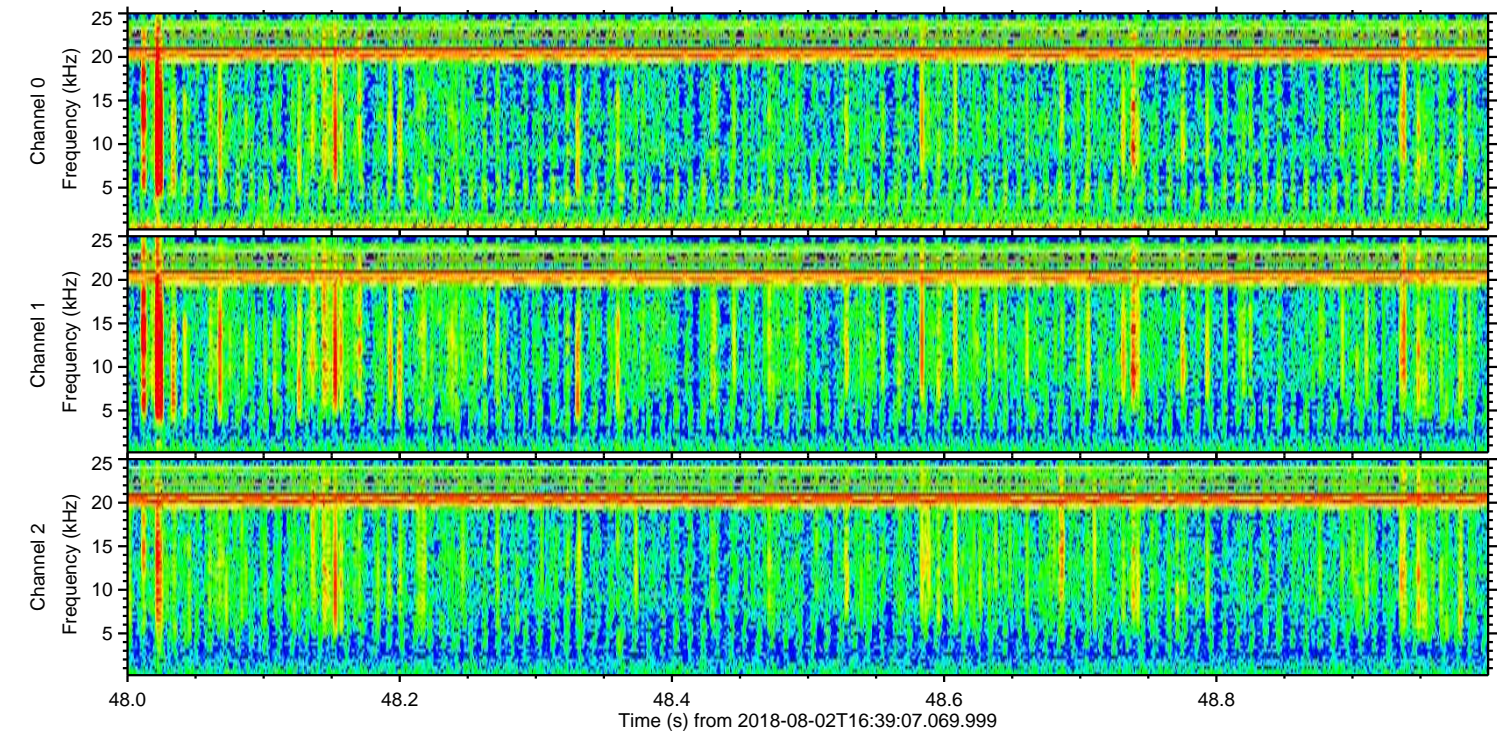
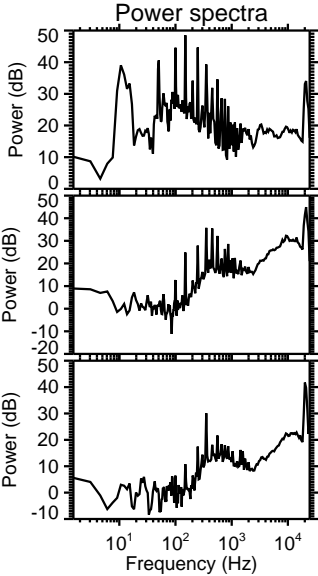
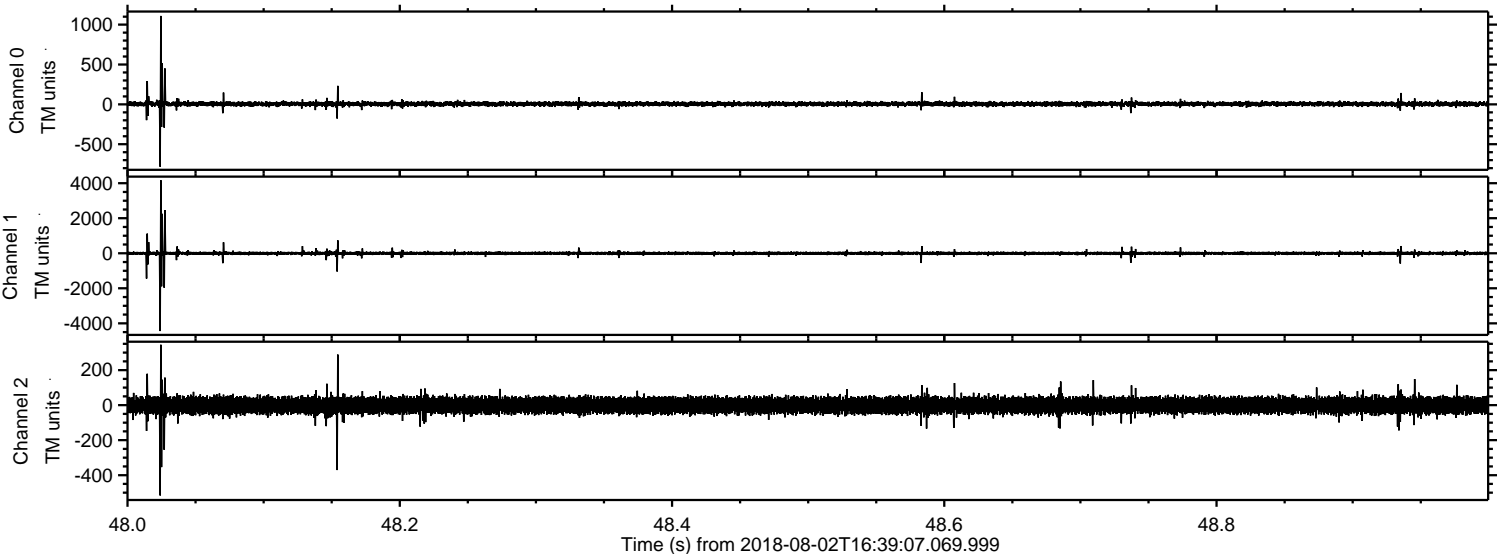


Processed Thu Aug 2 18:46:39 2018 by ELM ver.2012-10-06 from 001\_\_elm20180802\_163906\_\_dat00.bin



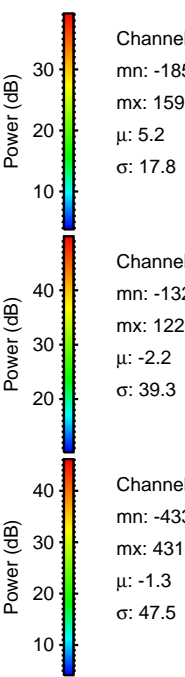
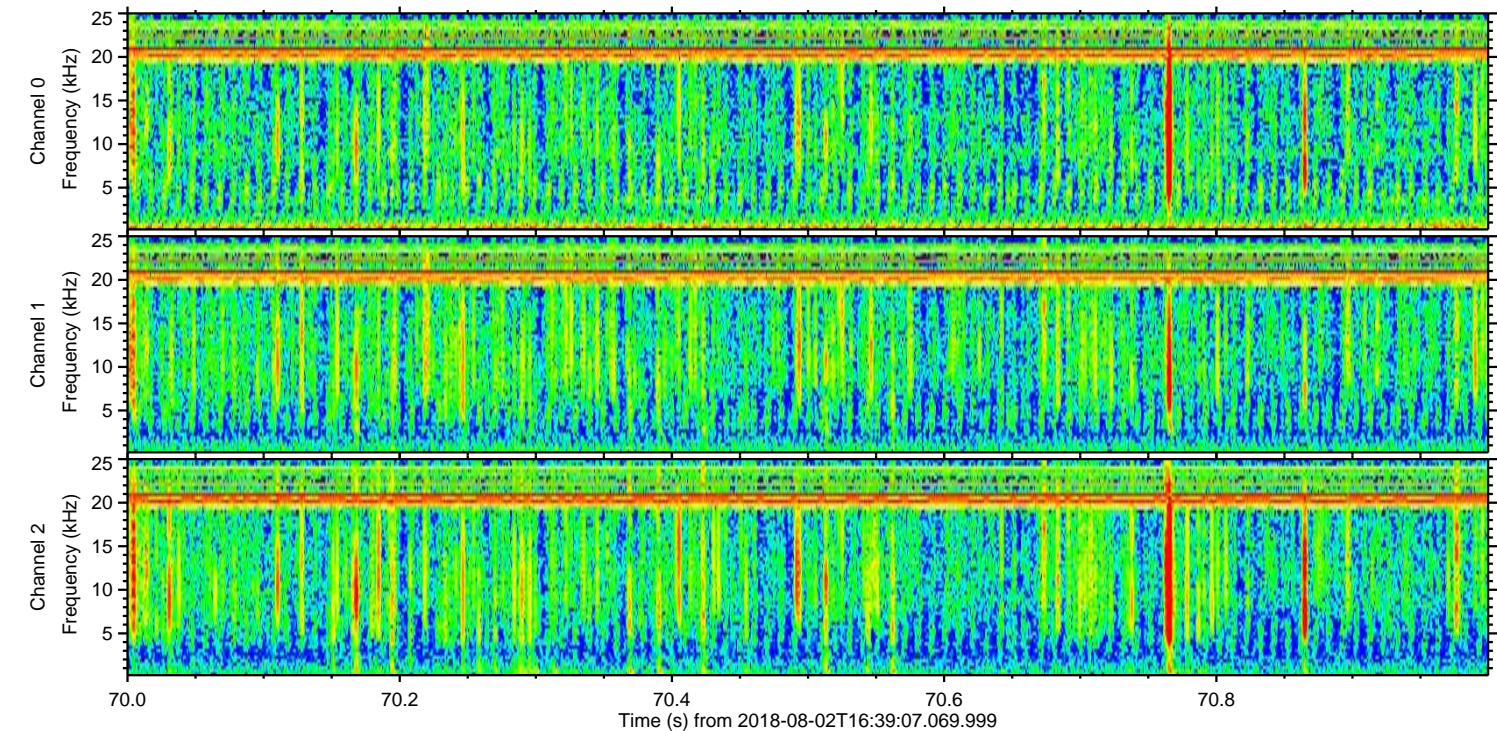
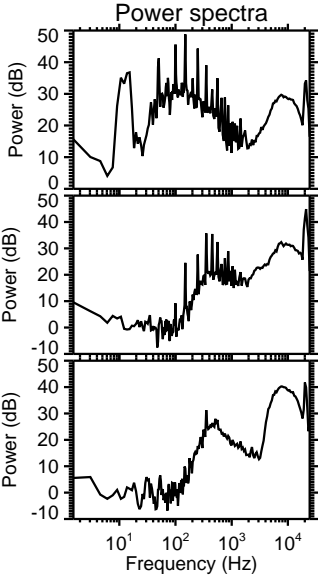
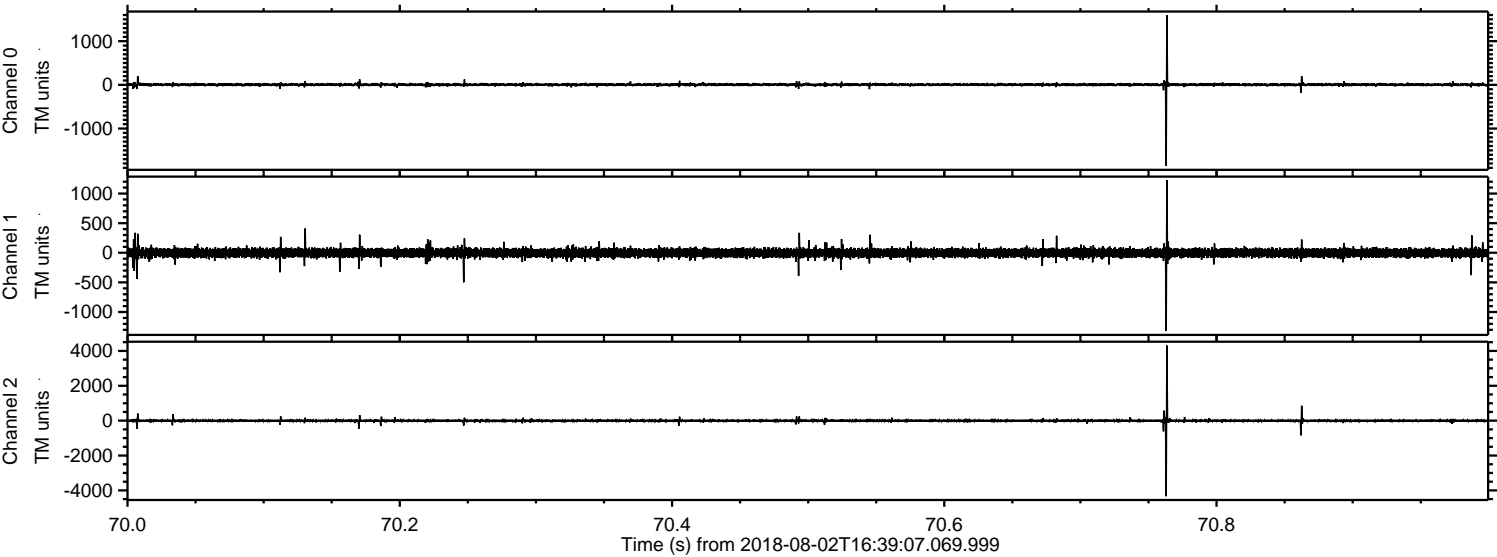


Processed Thu Aug 2 18:46:40 2018 by ELM ver.2012-10-06 from 001\_\_elm20180802\_163906\_\_dat00.bin



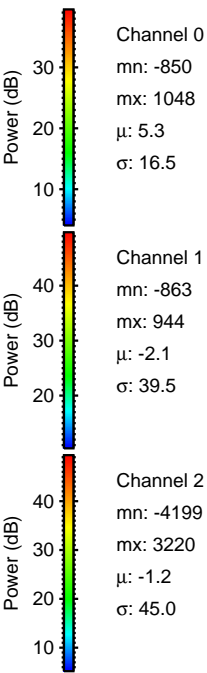
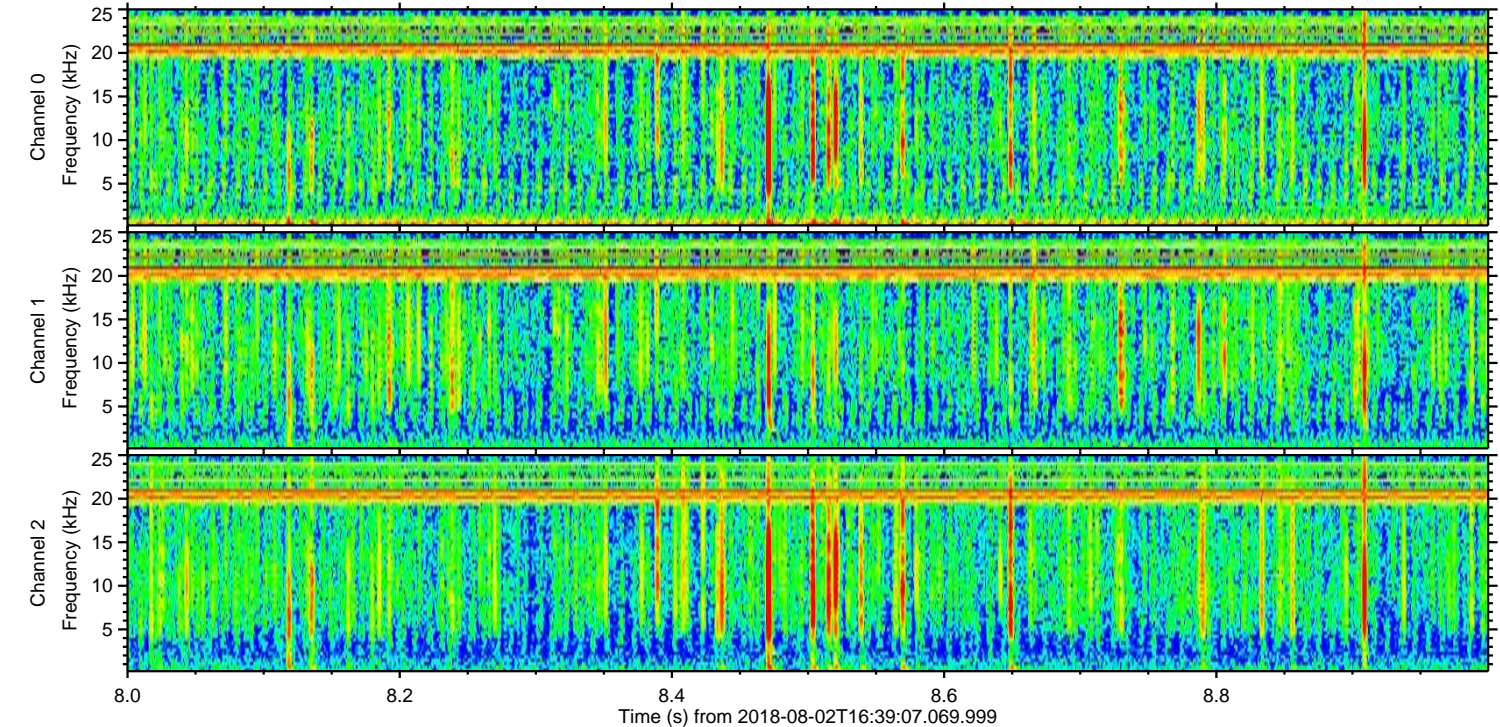
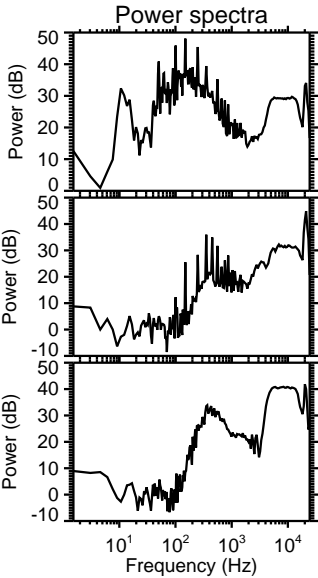
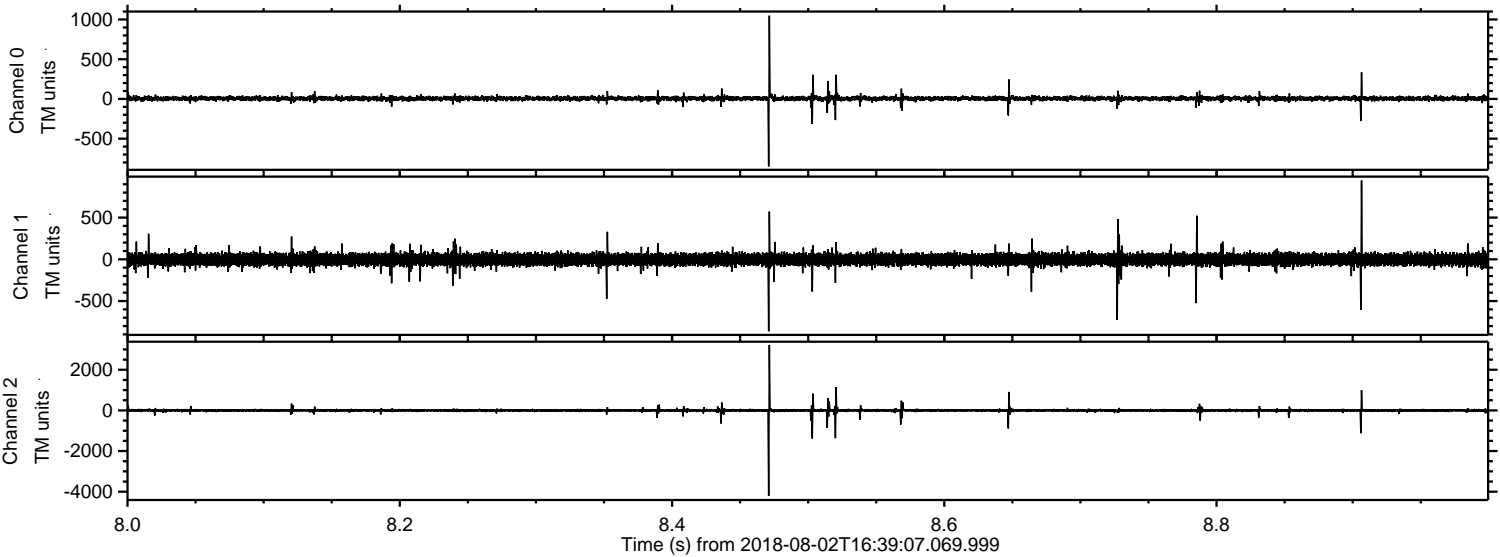


Processed Thu Aug 2 18:46:41 2018 by ELM ver.2012-10-06 from 001\_\_elm20180802\_163906\_\_dat00.bin



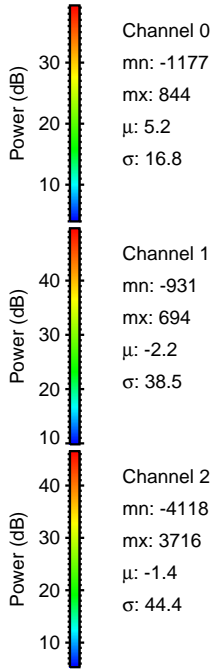
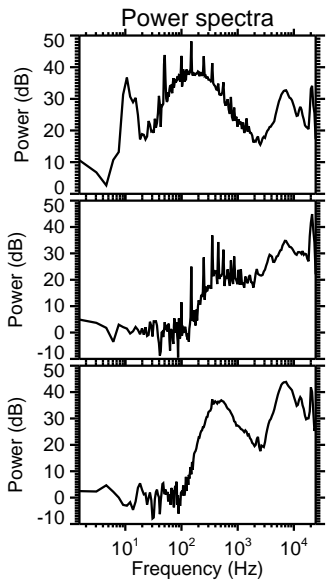
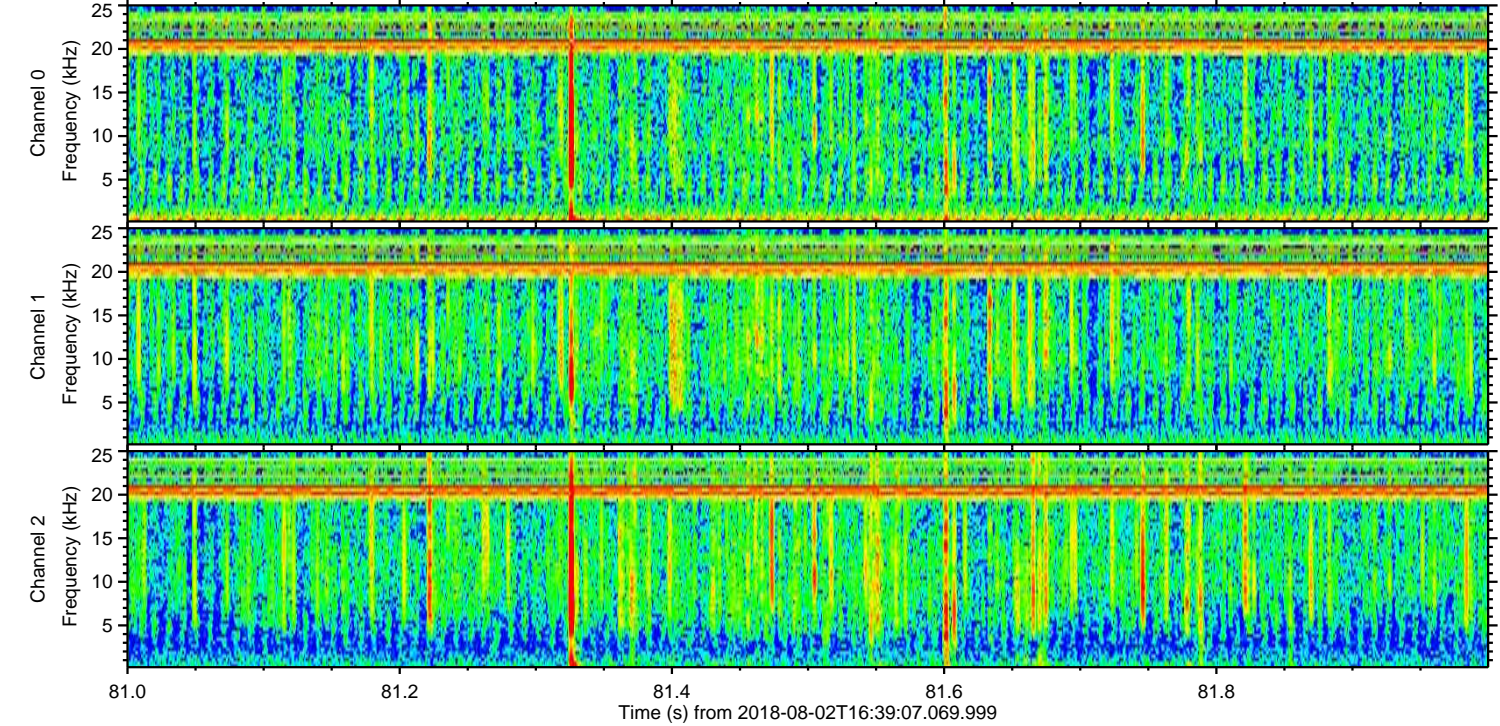
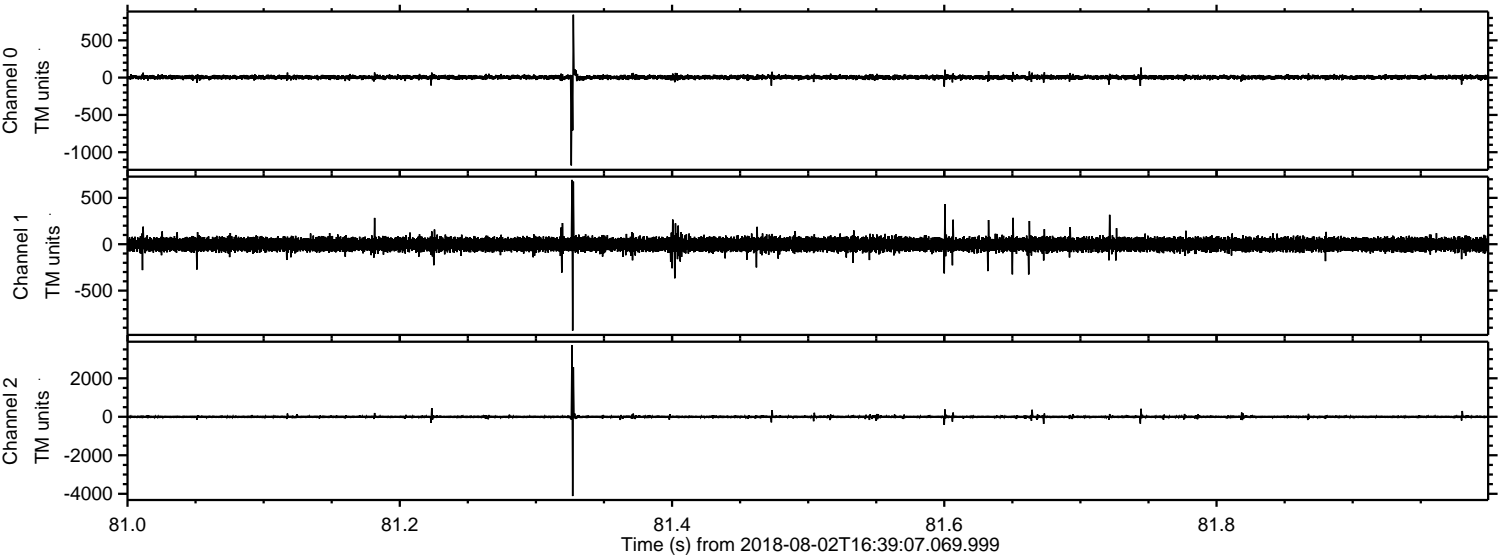


Processed Thu Aug 2 18:46:42 2018 by ELM ver.2012-10-06 from 001\_\_elm20180802\_163906\_\_dat00.bin





Processed Thu Aug 2 18:46:42 2018 by ELM ver.2012-10-06 from 001\_\_elm20180802\_163906\_\_dat00.bin



Channel 0  
mn: -1177  
mx: 844  
 $\mu$ : 5.2  
 $\sigma$ : 16.8

Channel 1  
mn: -931  
mx: 694  
 $\mu$ : -2.2  
 $\sigma$ : 38.5

Channel 2  
mn: -4118  
mx: 3716  
 $\mu$ : -1.4  
 $\sigma$ : 44.4



Processed Thu Aug 2 18:46:43 2018 by ELM ver.2012-10-06 from 001\_\_elm20180802\_163906\_\_dat00.bin

