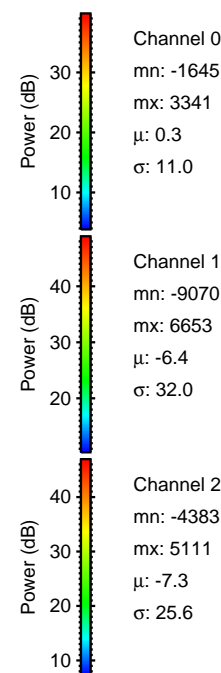
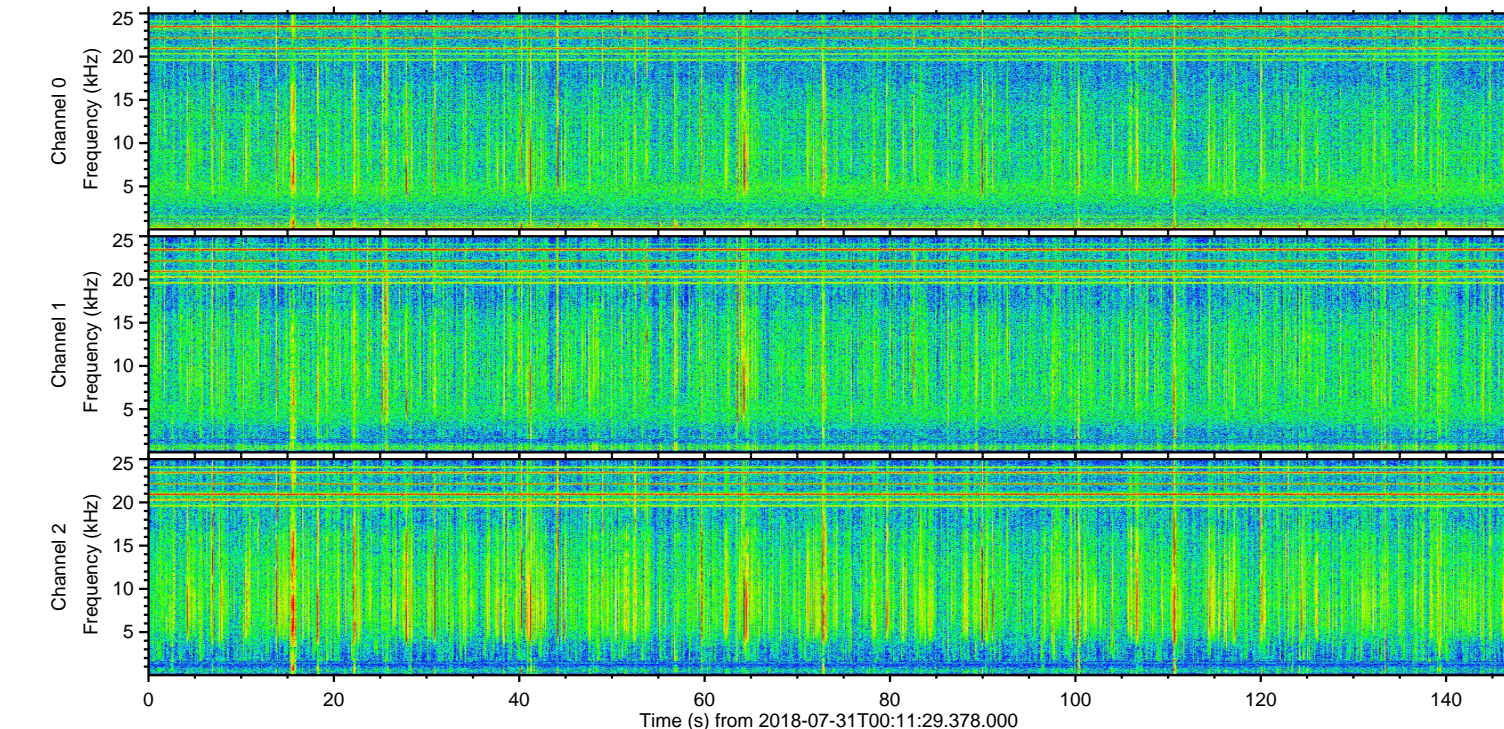
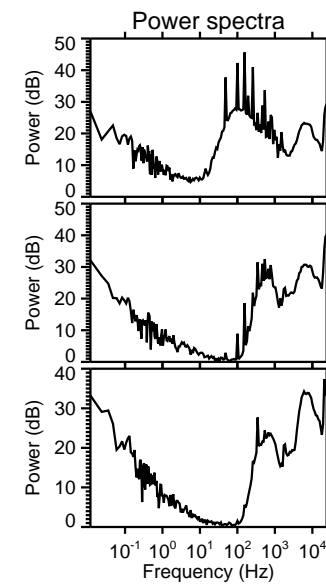
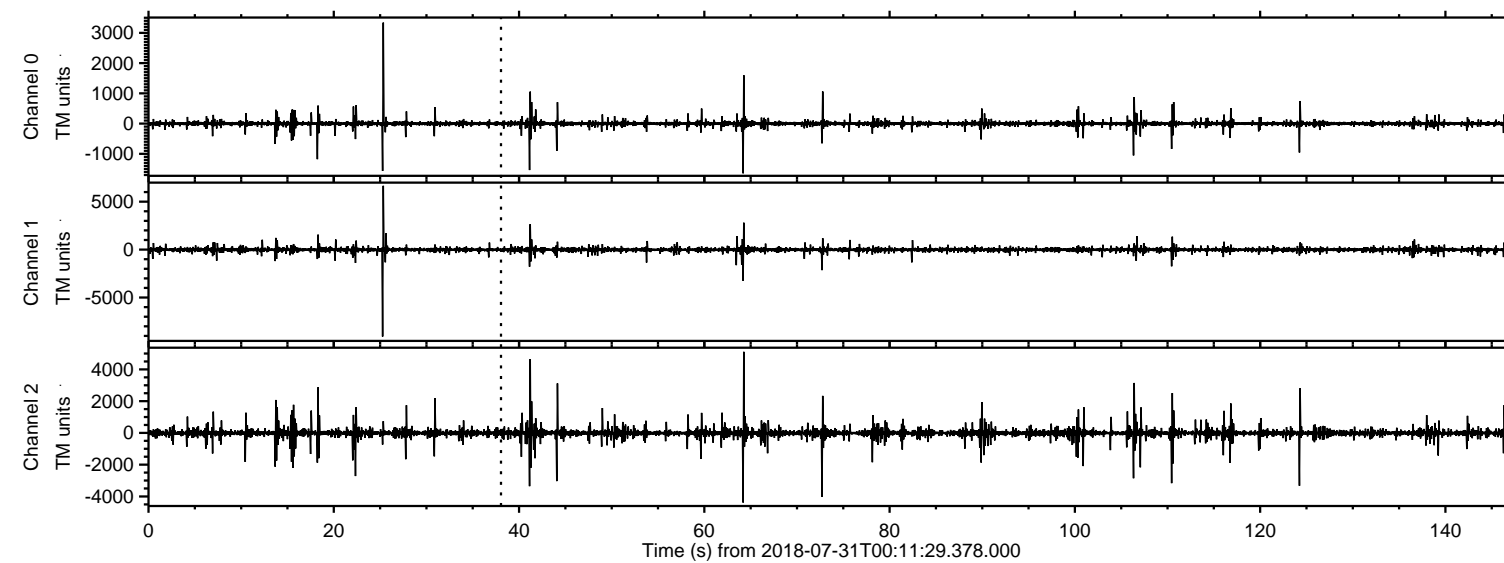
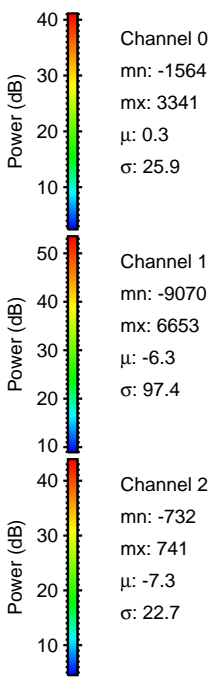
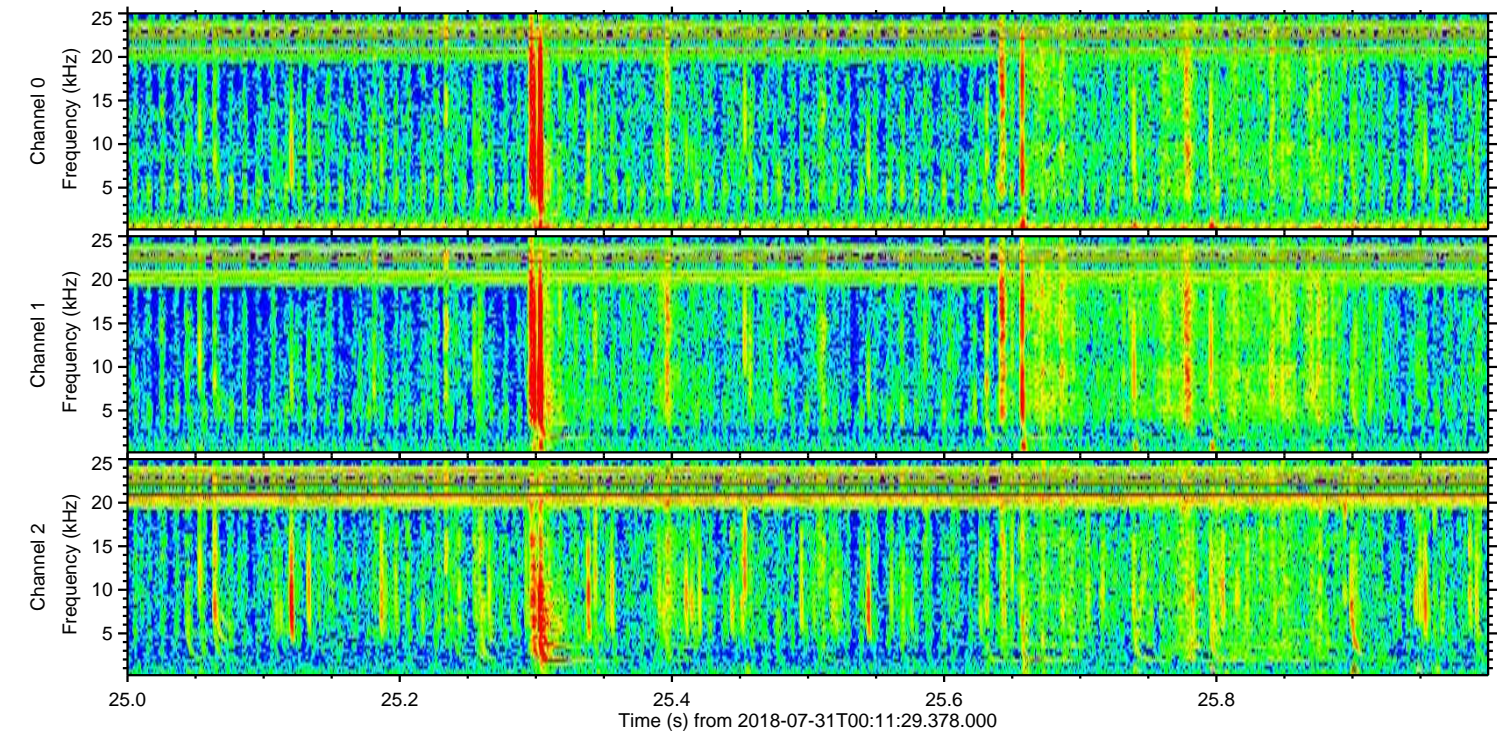
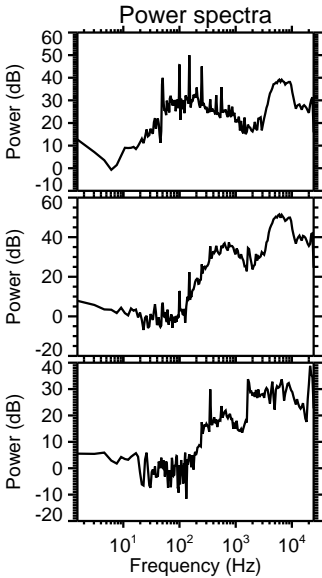
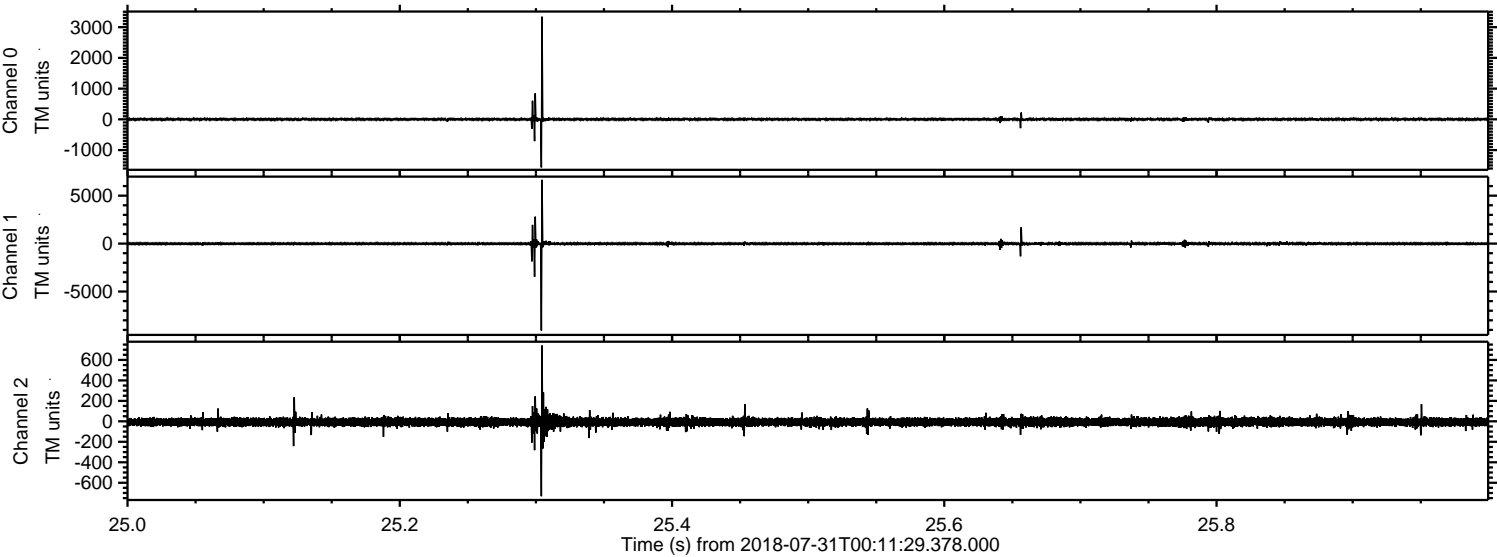


ELMAVAN 3D WAVEFORMS (Measured data sampled at 50 kHz) 50999 packets of 144 samples from 2018-07-31T00:11:29.378.000.

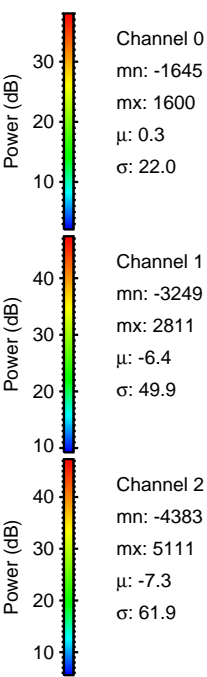
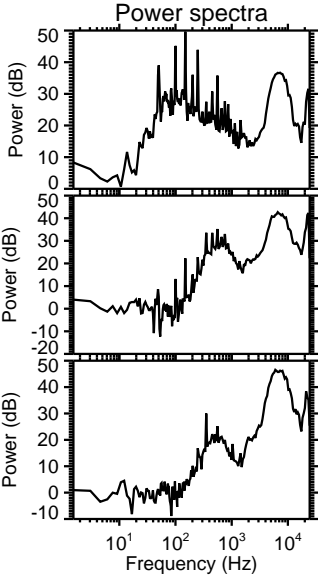
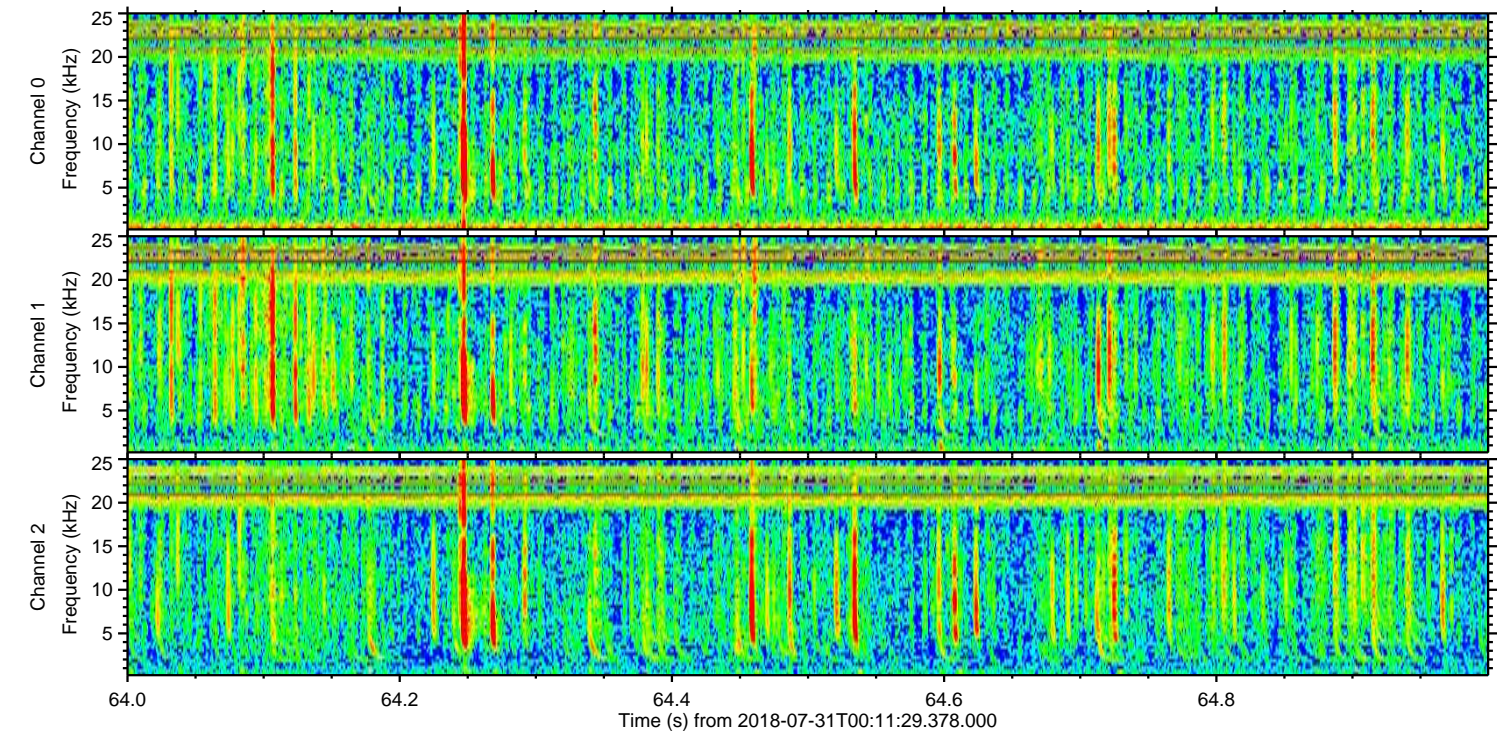
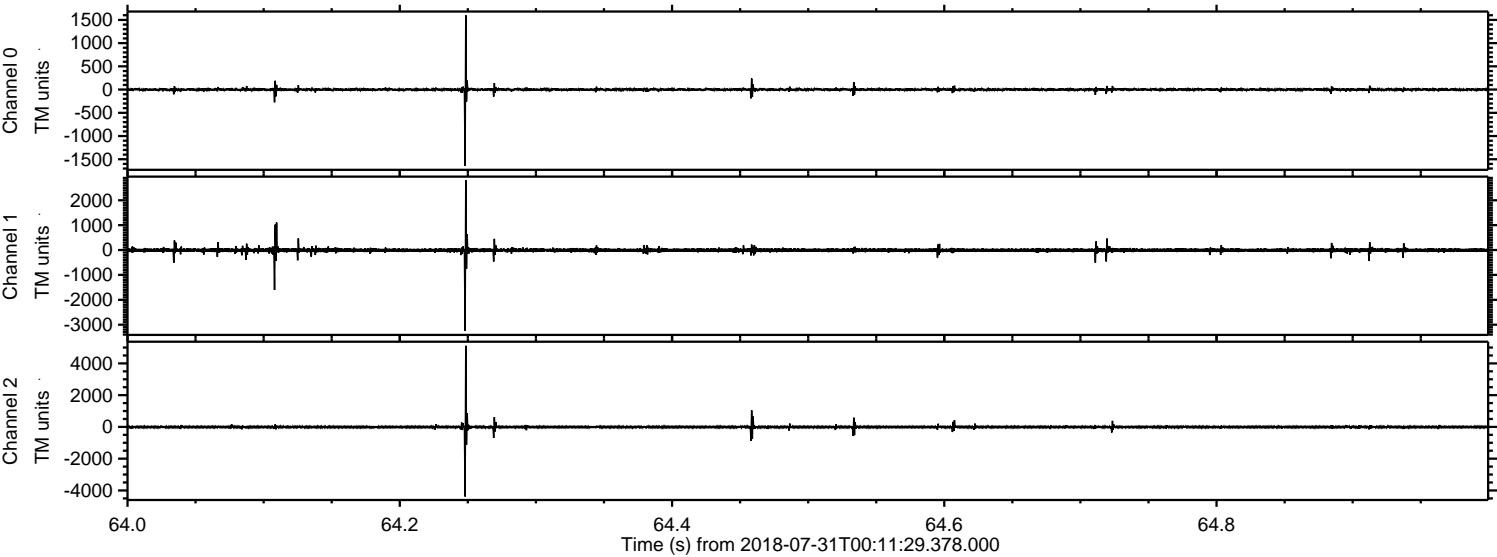
Processed Tue Jul 31 02:19:11 2018 by ELM ver.2012-10-06 from 001__elm20180731_001128__dat00.bin



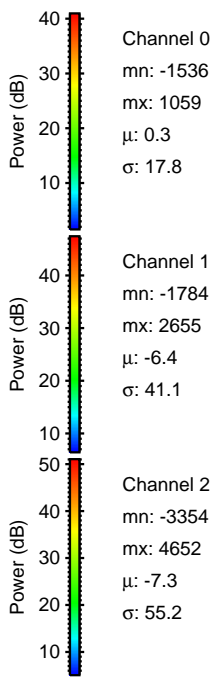
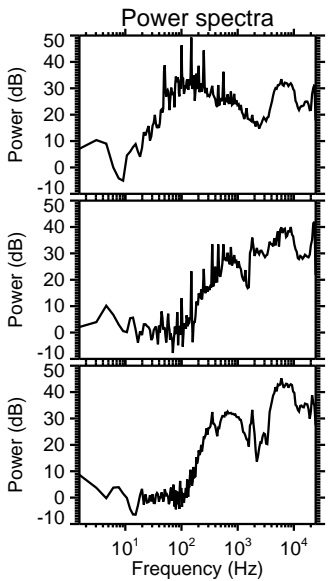
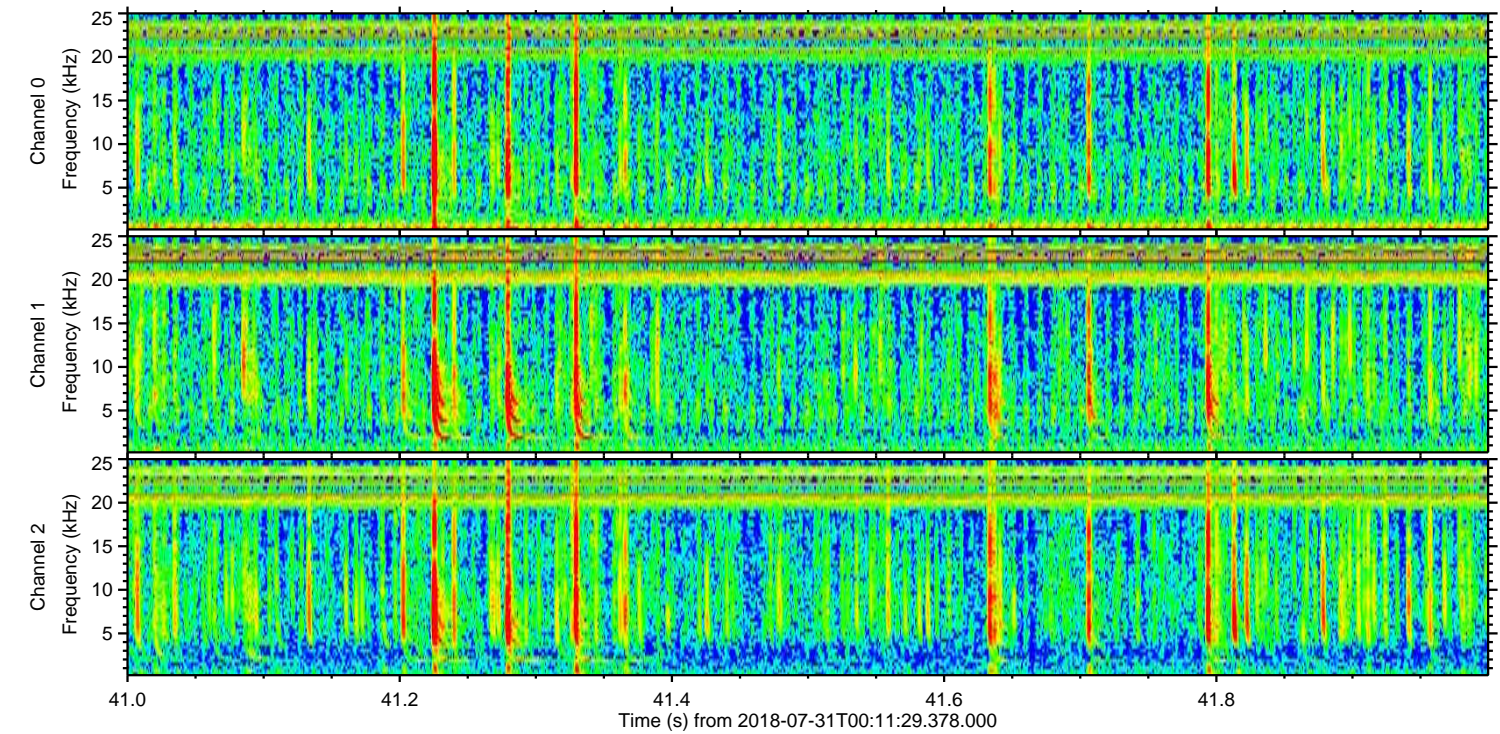
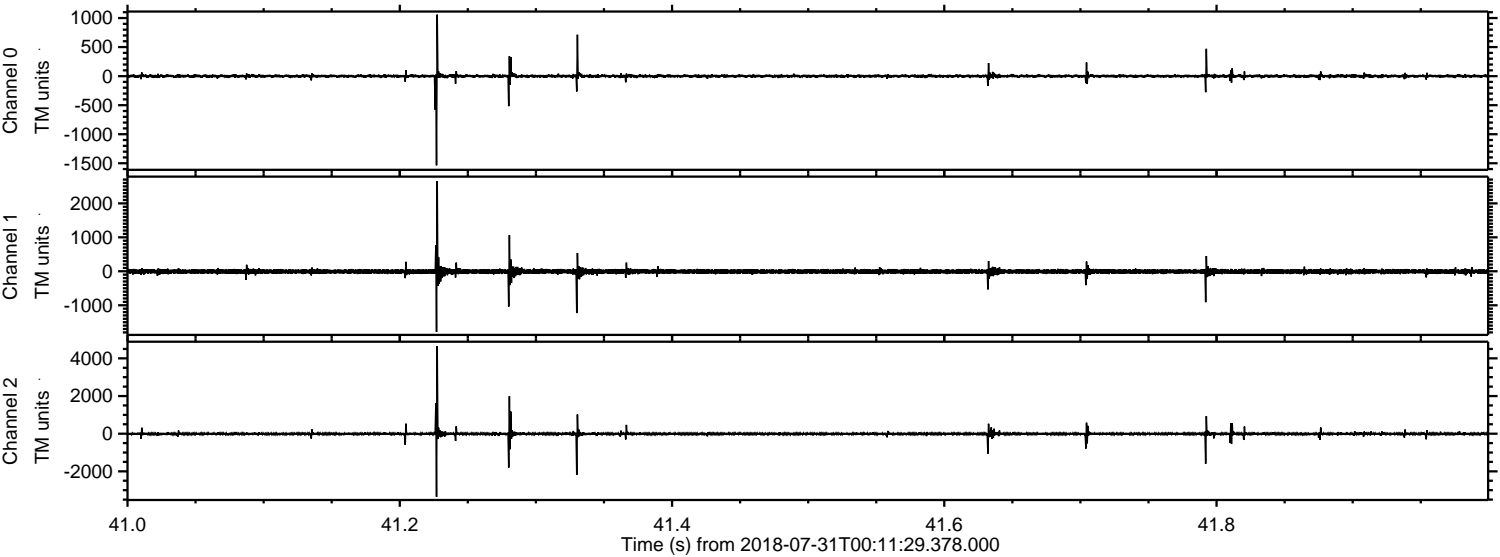
Processed Tue Jul 31 02:19:17 2018 by ELM ver.2012-10-06 from 001__elm20180731_001128__dat00.bin



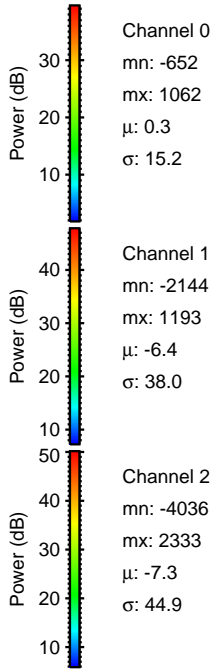
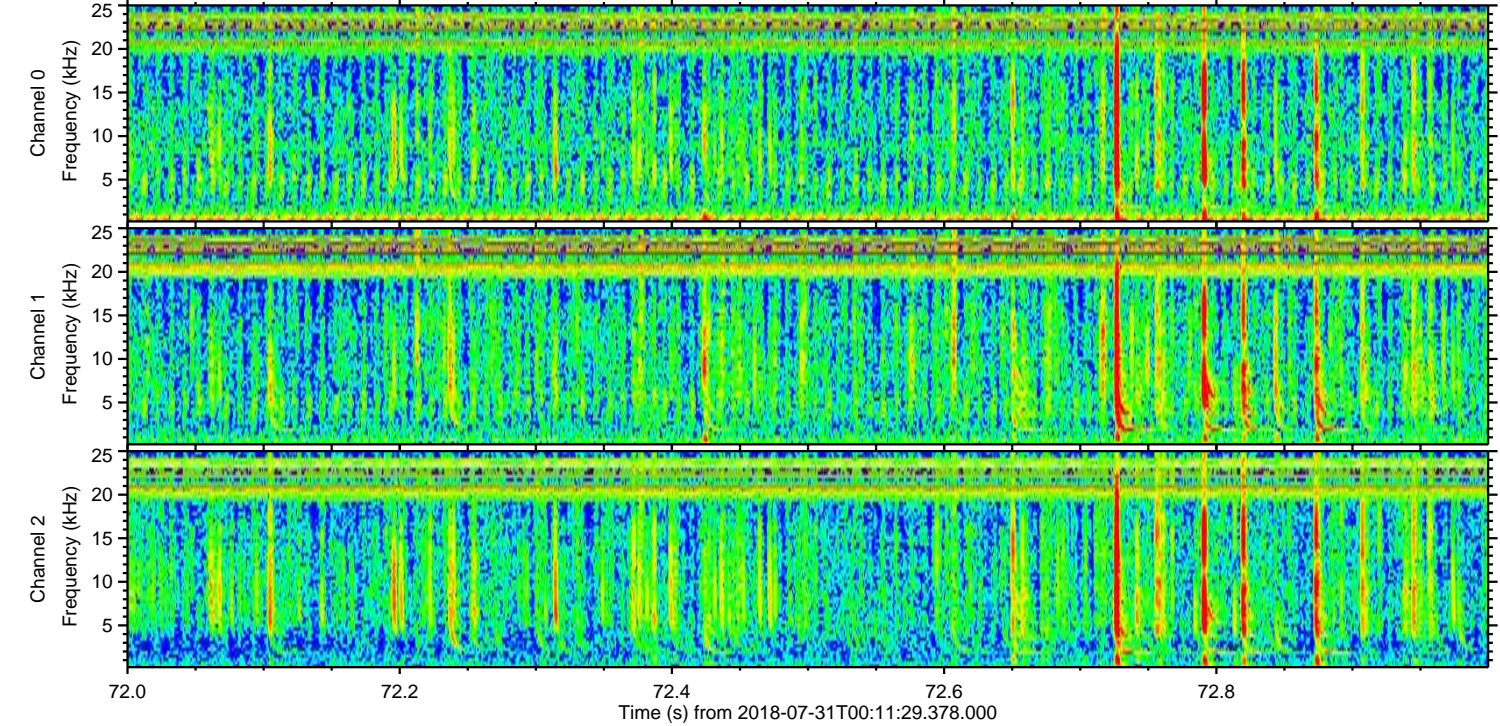
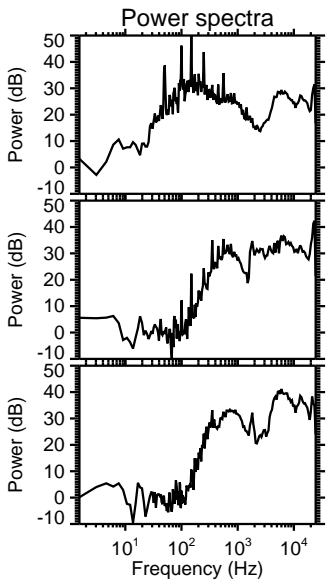
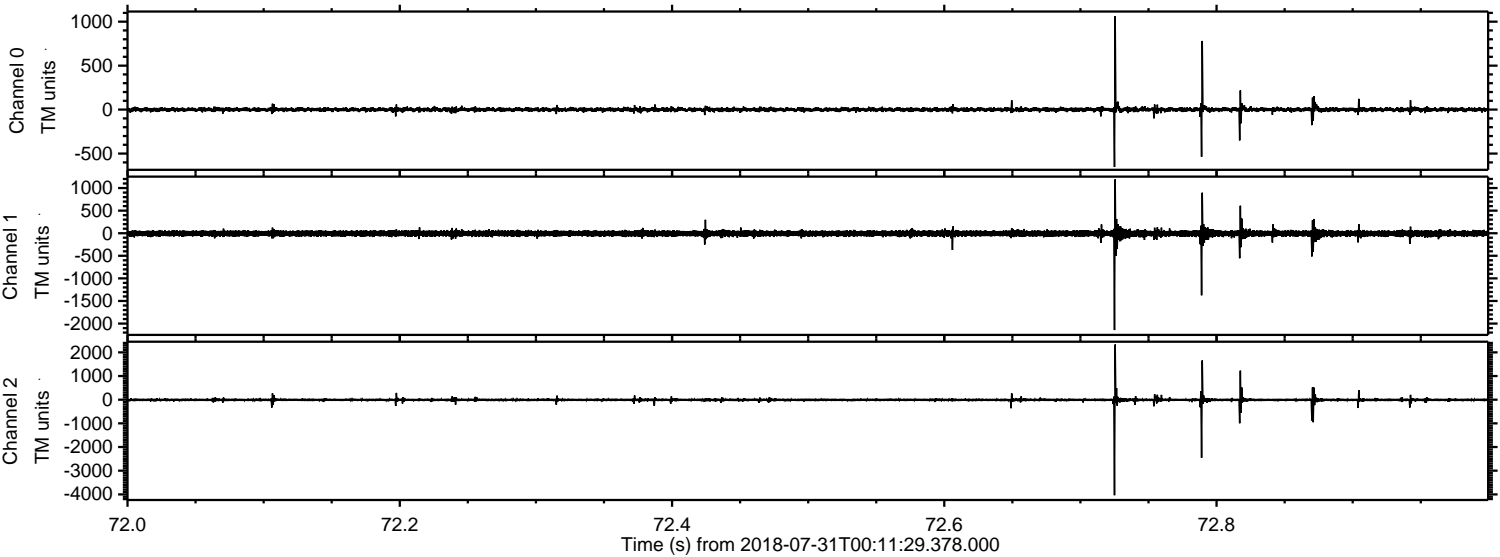
Processed Tue Jul 31 02:19:18 2018 by ELM ver.2012-10-06 from 001__elm20180731_001128__dat00.bin



Processed Tue Jul 31 02:19:18 2018 by ELM ver.2012-10-06 from 001__elm20180731_001128__dat00.bin

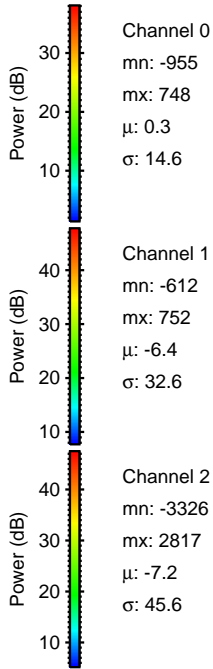
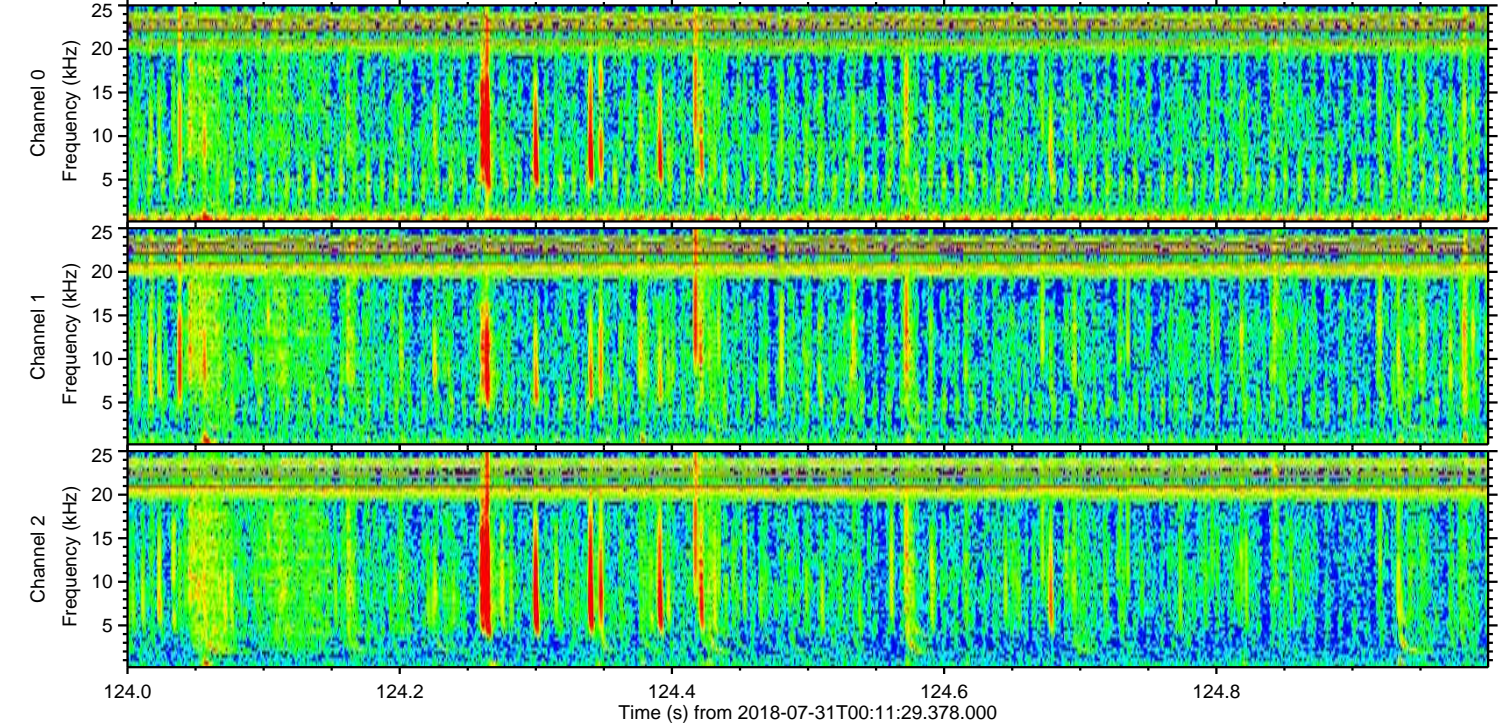
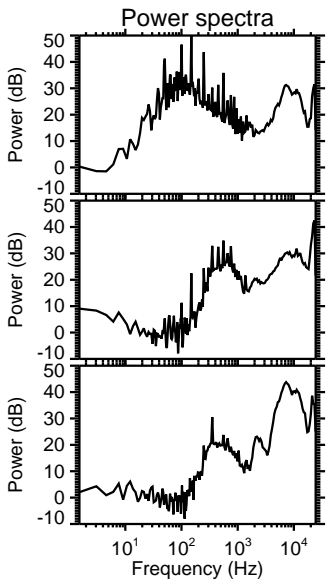
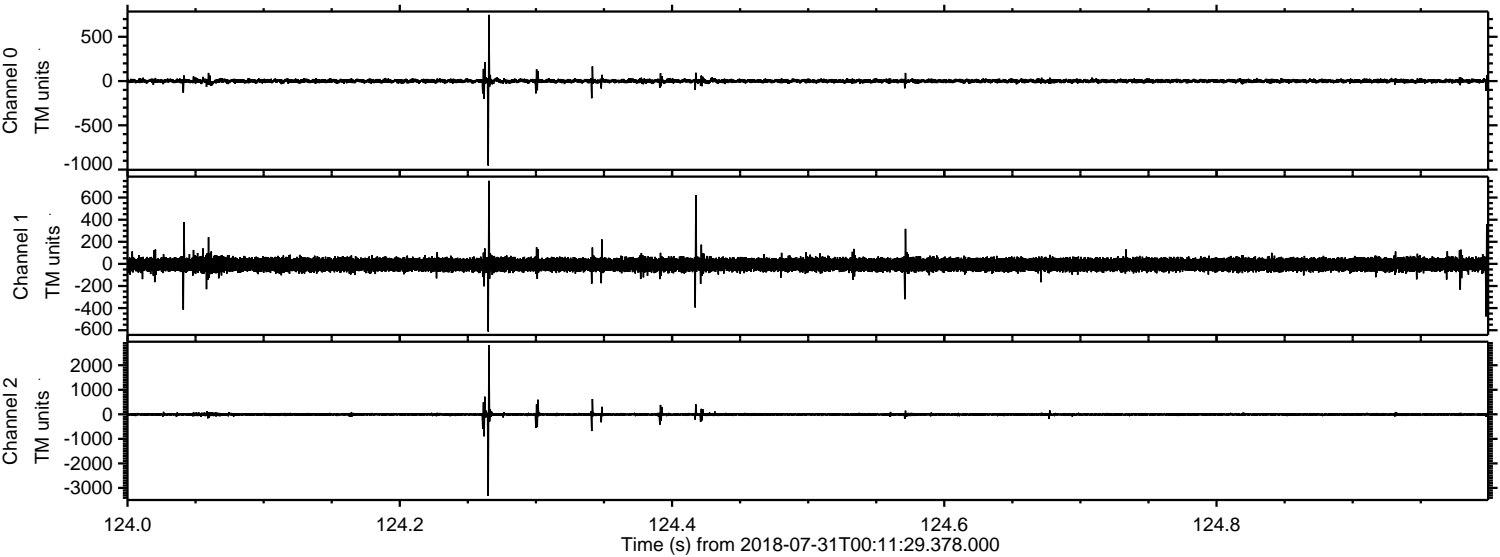


Processed Tue Jul 31 02:19:19 2018 by ELM ver.2012-10-06 from 001__elm20180731_001128__dat00.bin



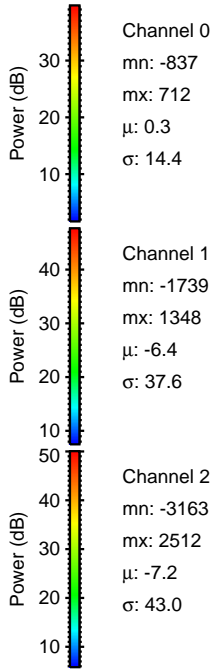
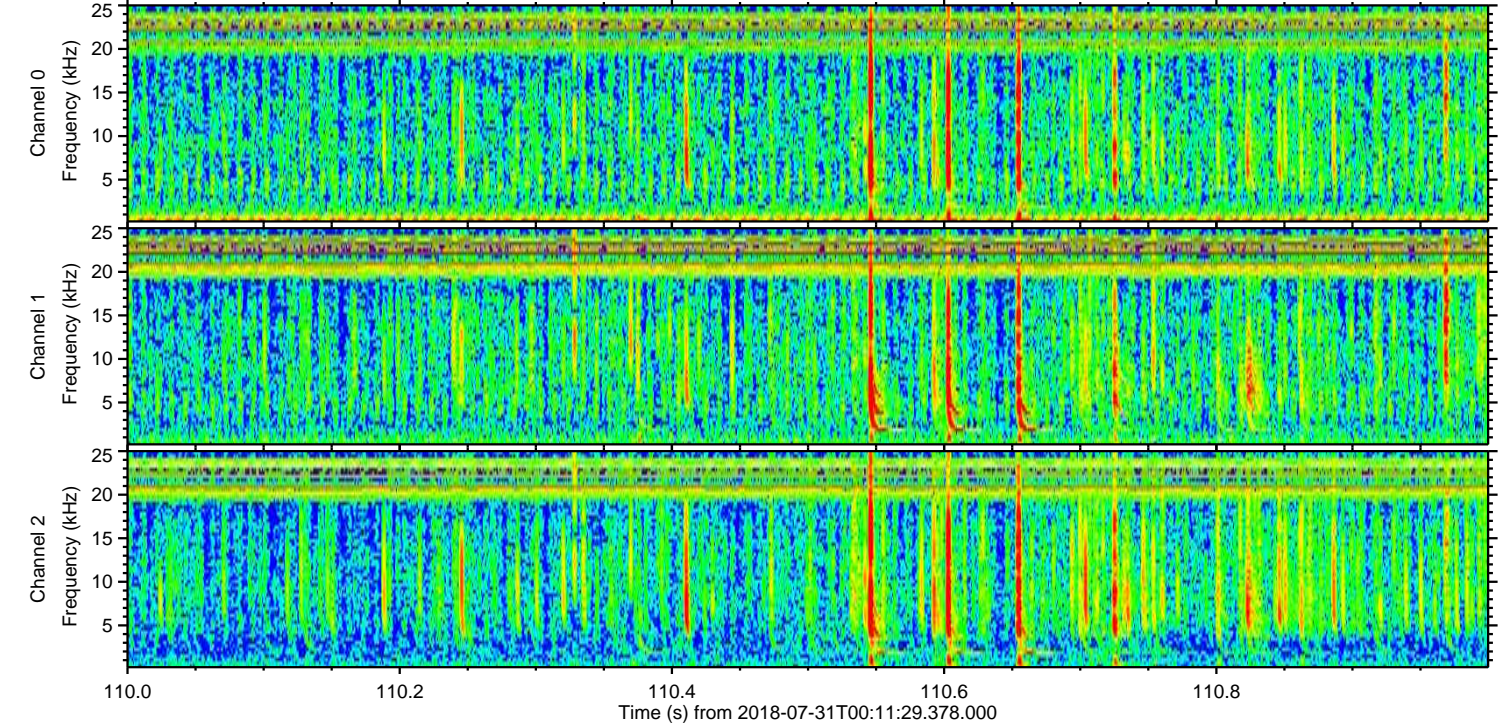
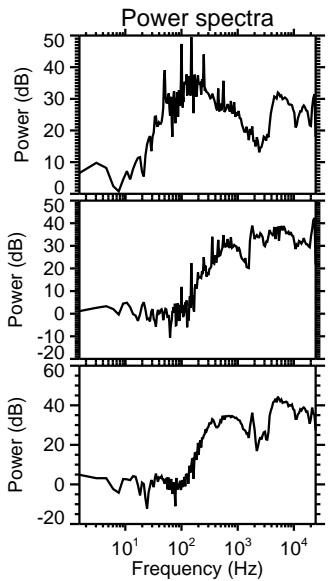
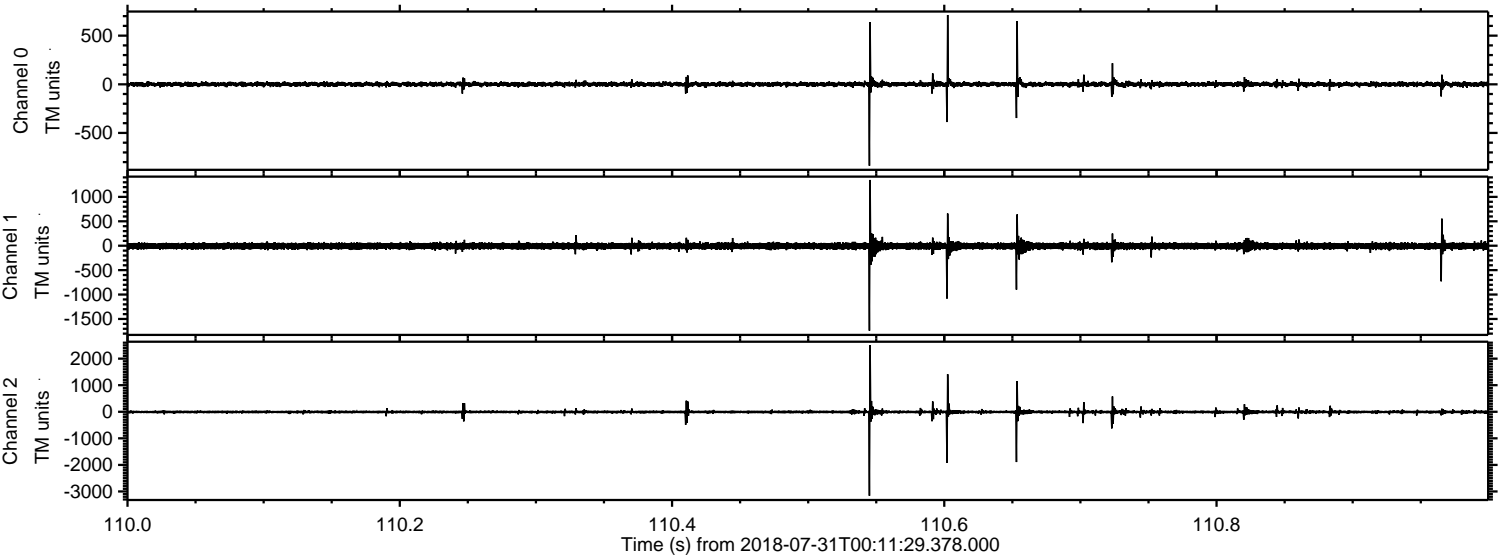
ELMAVAN 3D WAVEFORMS (Measured data sampled at 50 kHz) 50999 packets of 144 samples from 2018-07-31T00:11:29.378.000. Part 125/147

Processed Tue Jul 31 02:19:20 2018 by ELM ver.2012-10-06 from 001__elm20180731_001128__dat00.bin



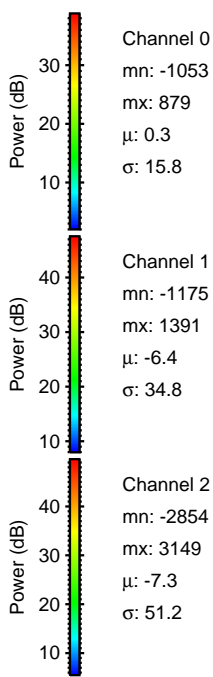
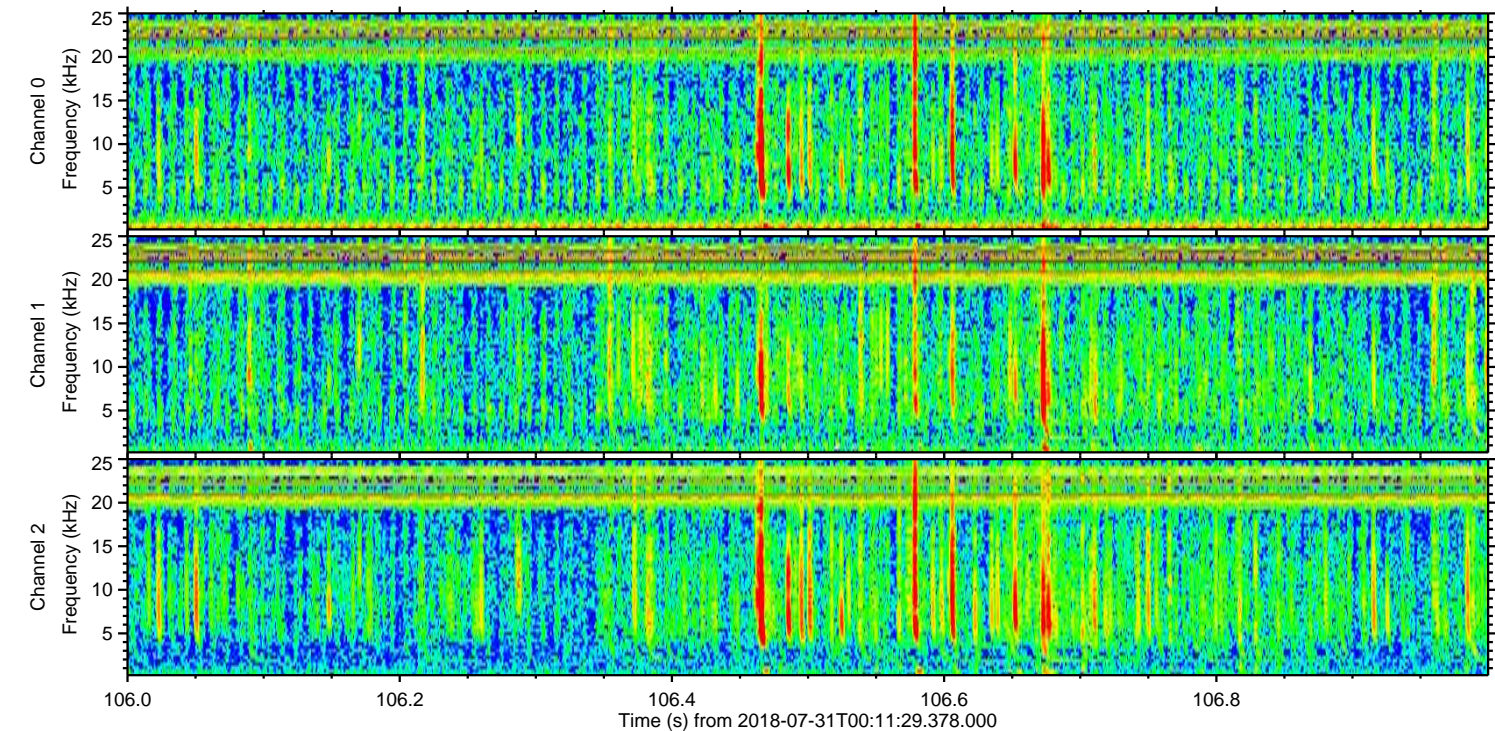
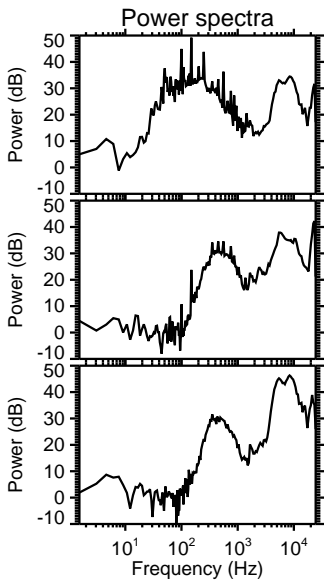
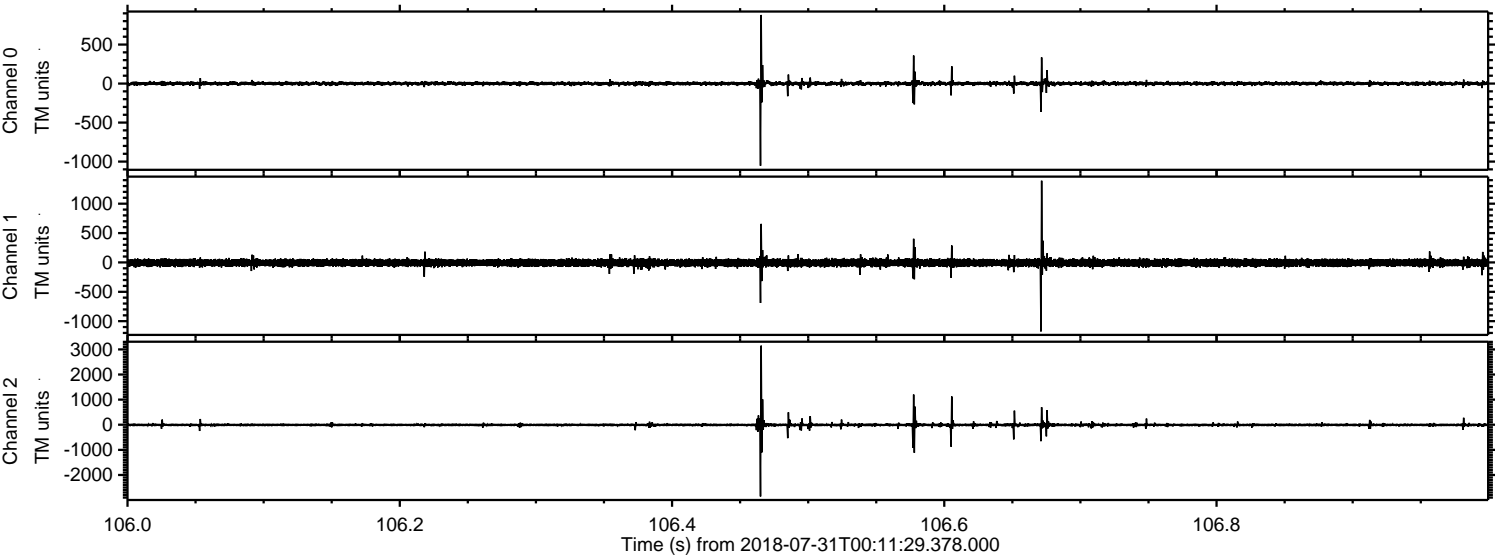
ELMAVAN 3D WAVEFORMS (Measured data sampled at 50 kHz) 50999 packets of 144 samples from 2018-07-31T00:11:29.378.000. Part 111/147

Processed Tue Jul 31 02:19:21 2018 by ELM ver.2012-10-06 from 001__elm20180731_001128__dat00.bin

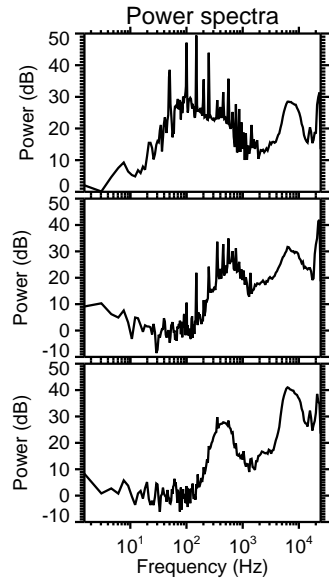
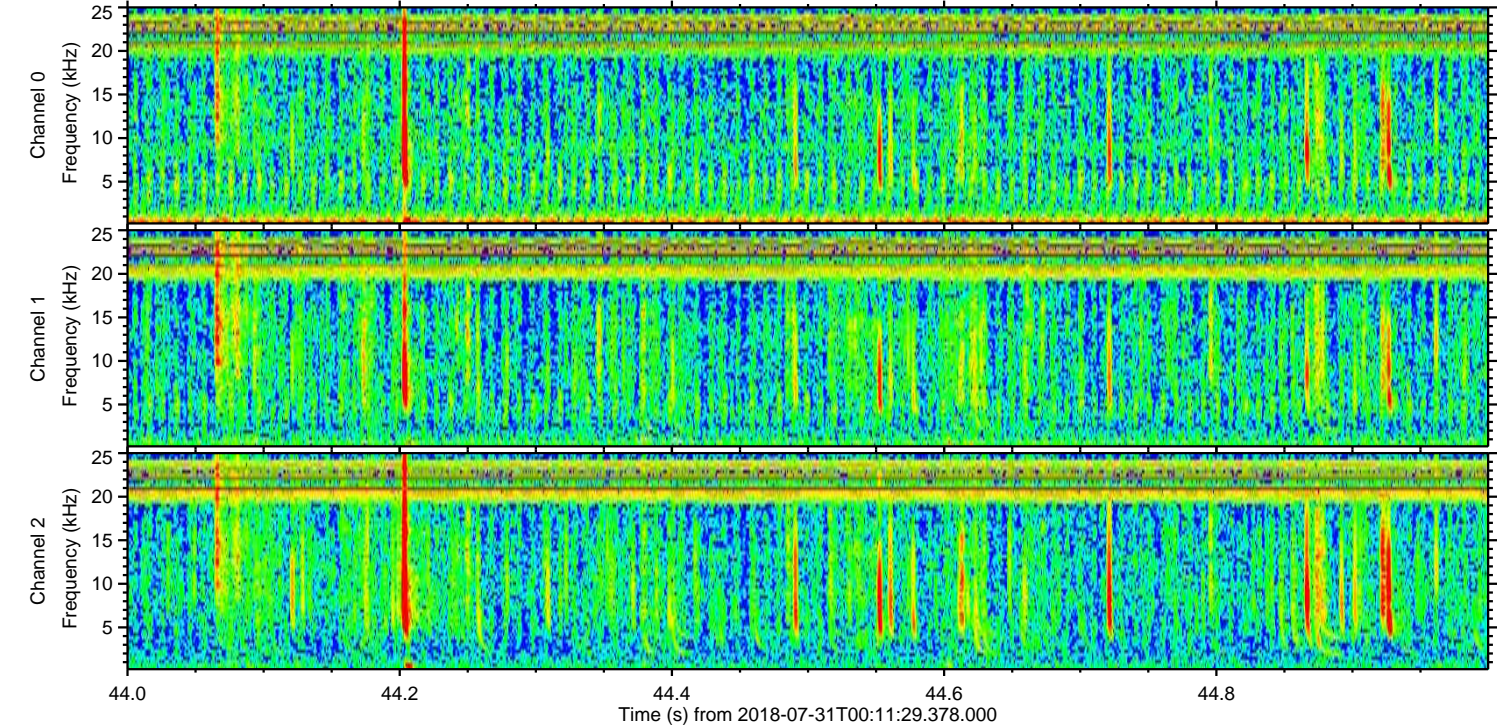
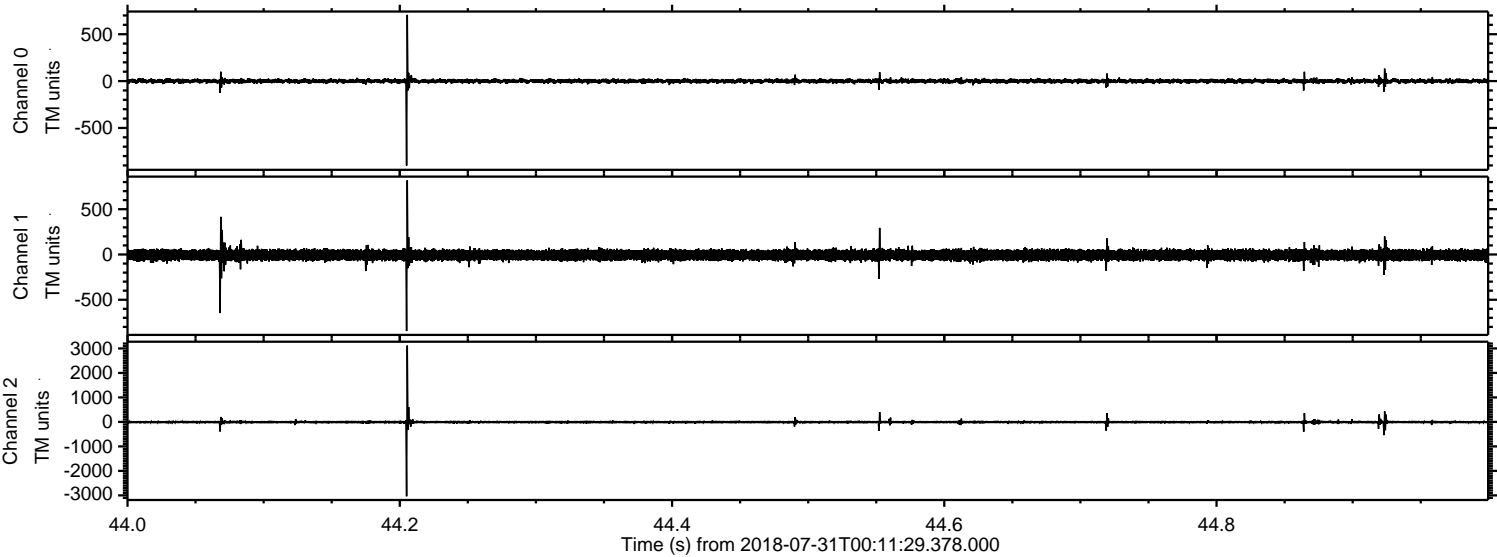


ELMAVAN 3D WAVEFORMS (Measured data sampled at 50 kHz) 50999 packets of 144 samples from 2018-07-31T00:11:29.378.000. Part 107/147

Processed Tue Jul 31 02:19:21 2018 by ELM ver.2012-10-06 from 001__elm20180731_001128__dat00.bin



Processed Tue Jul 31 02:19:22 2018 by ELM ver.2012-10-06 from 001__elm20180731_001128__dat00.bin



Channel 0
mn: -902
mx: 707
 μ : 0.3
 σ : 14.2

Channel 1
mn: -846
mx: 819
 μ : -6.4
 σ : 31.6

Channel 2
mn: -3036
mx: 3119
 μ : -7.3
 σ : 44.6

Processed Tue Jul 31 02:19:22 2018 by ELM ver.2012-10-06 from 001__elm20180731_001128__dat00.bin

