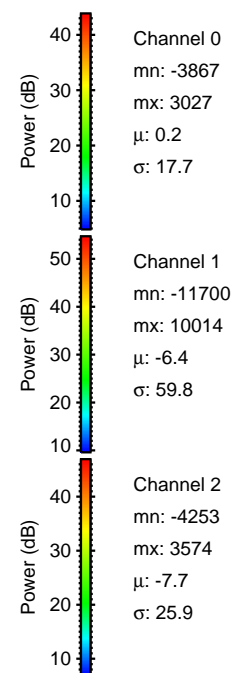
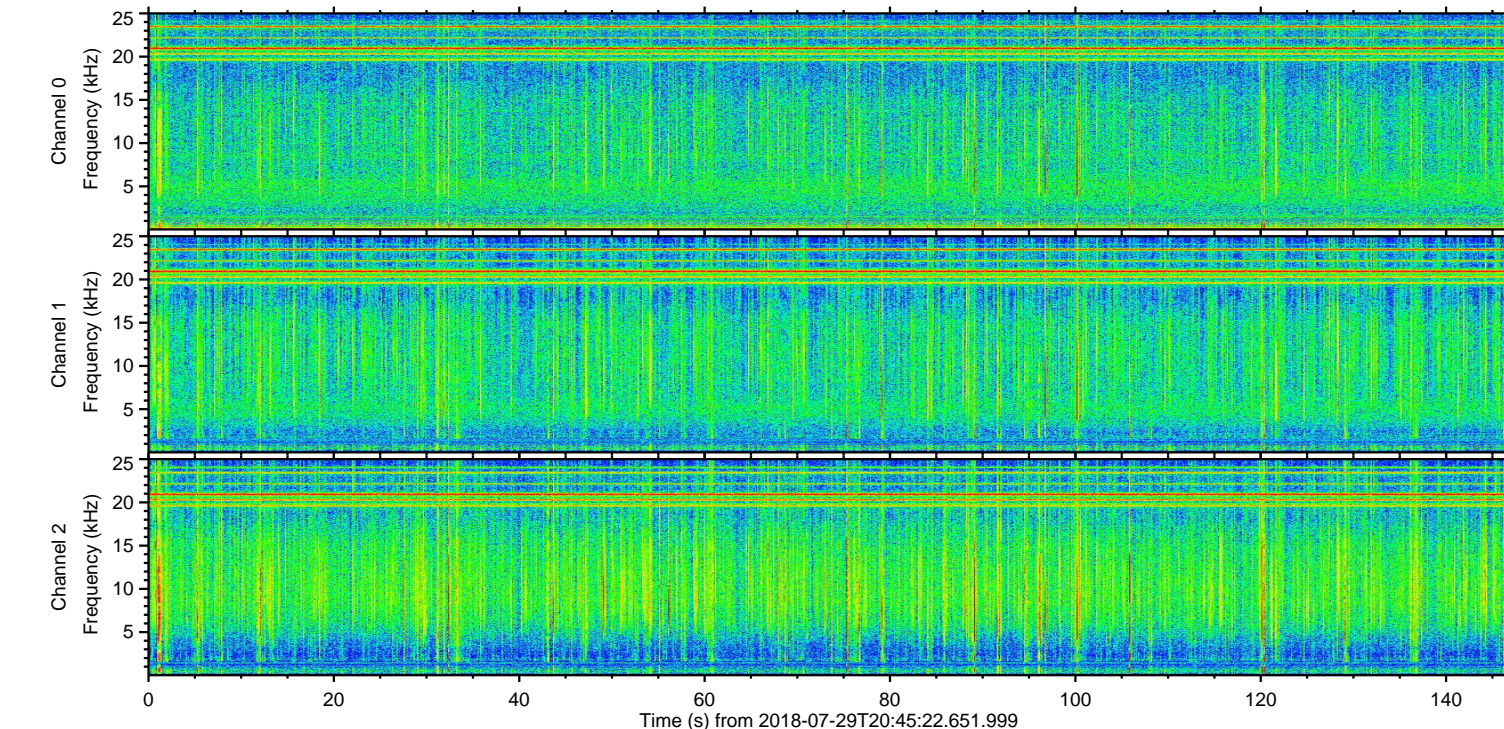
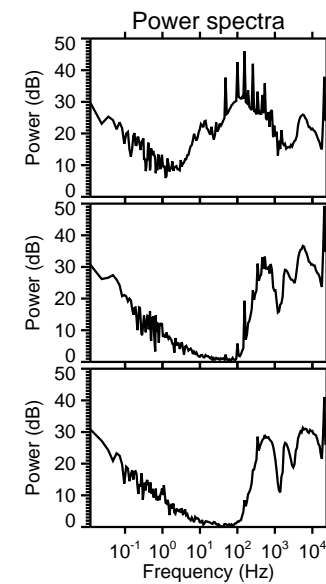
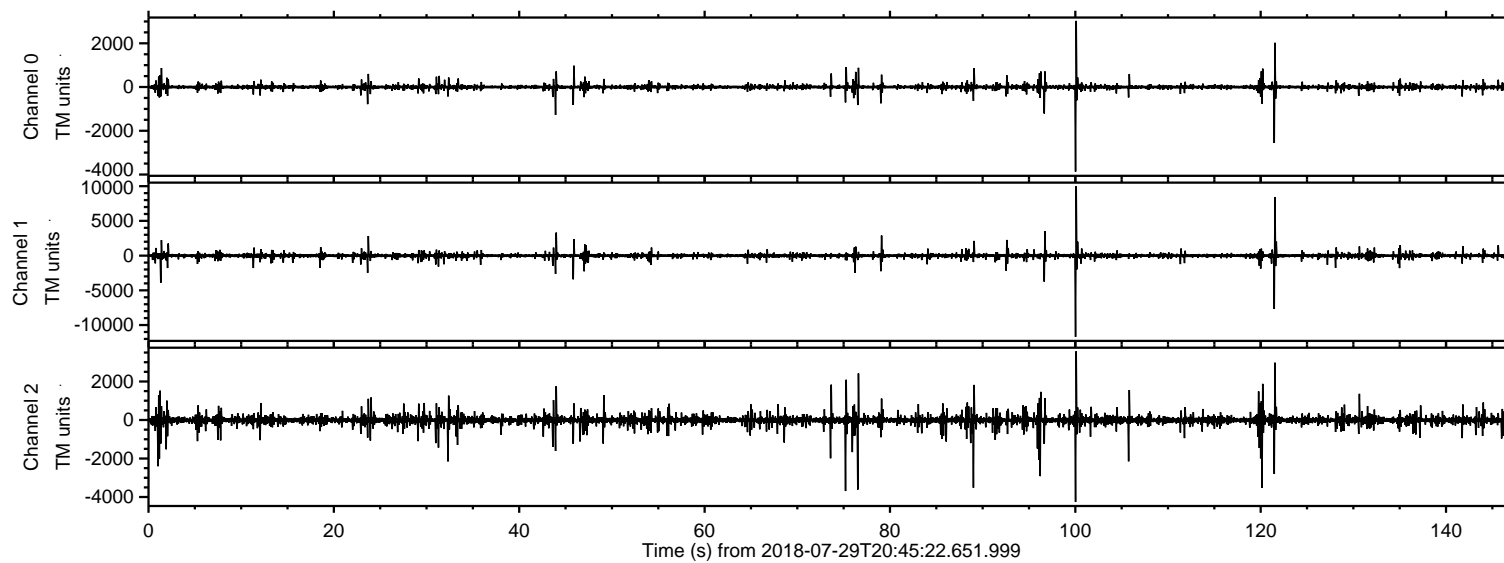


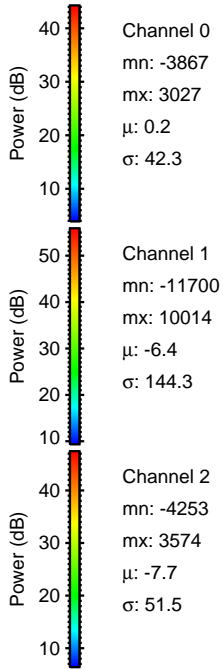
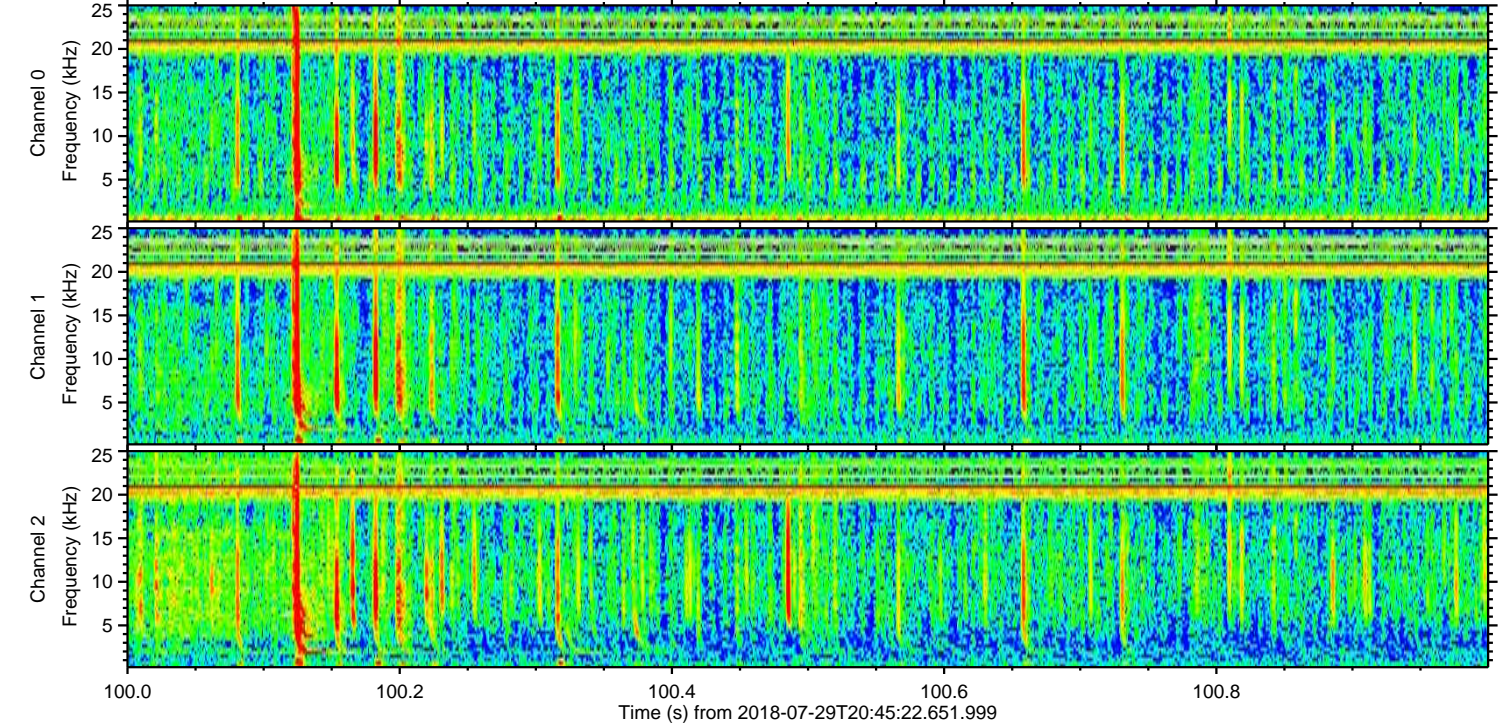
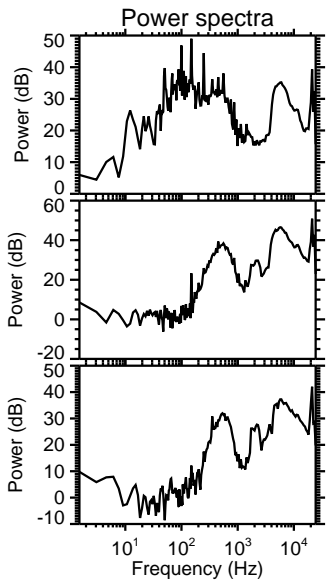
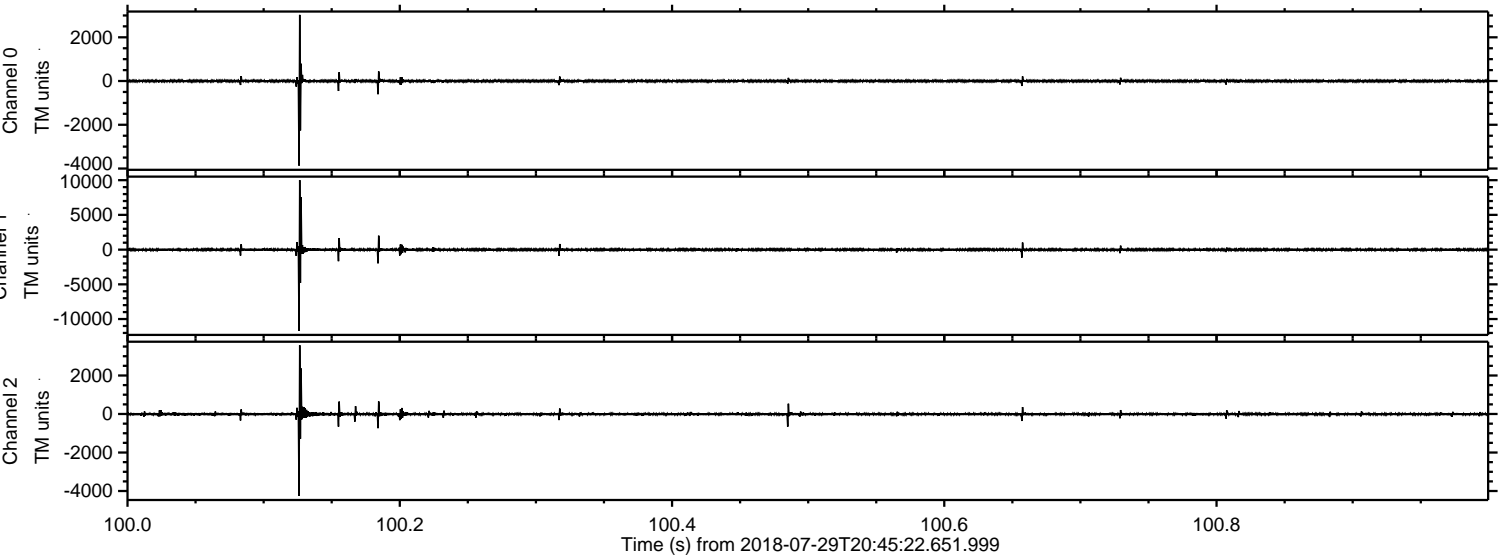
ELMAVAN 3D WAVEFORMS (Measured data sampled at 50 kHz) 51000 packets of 144 samples from 2018-07-29T20:45:22.651.999.

Processed Sun Jul 29 22:53:00 2018 by ELM ver.2012-10-06 from 001__elm20180729_204521__dat00.bin



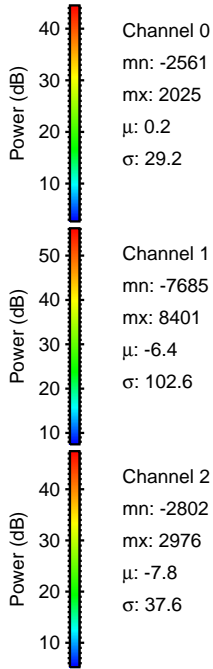
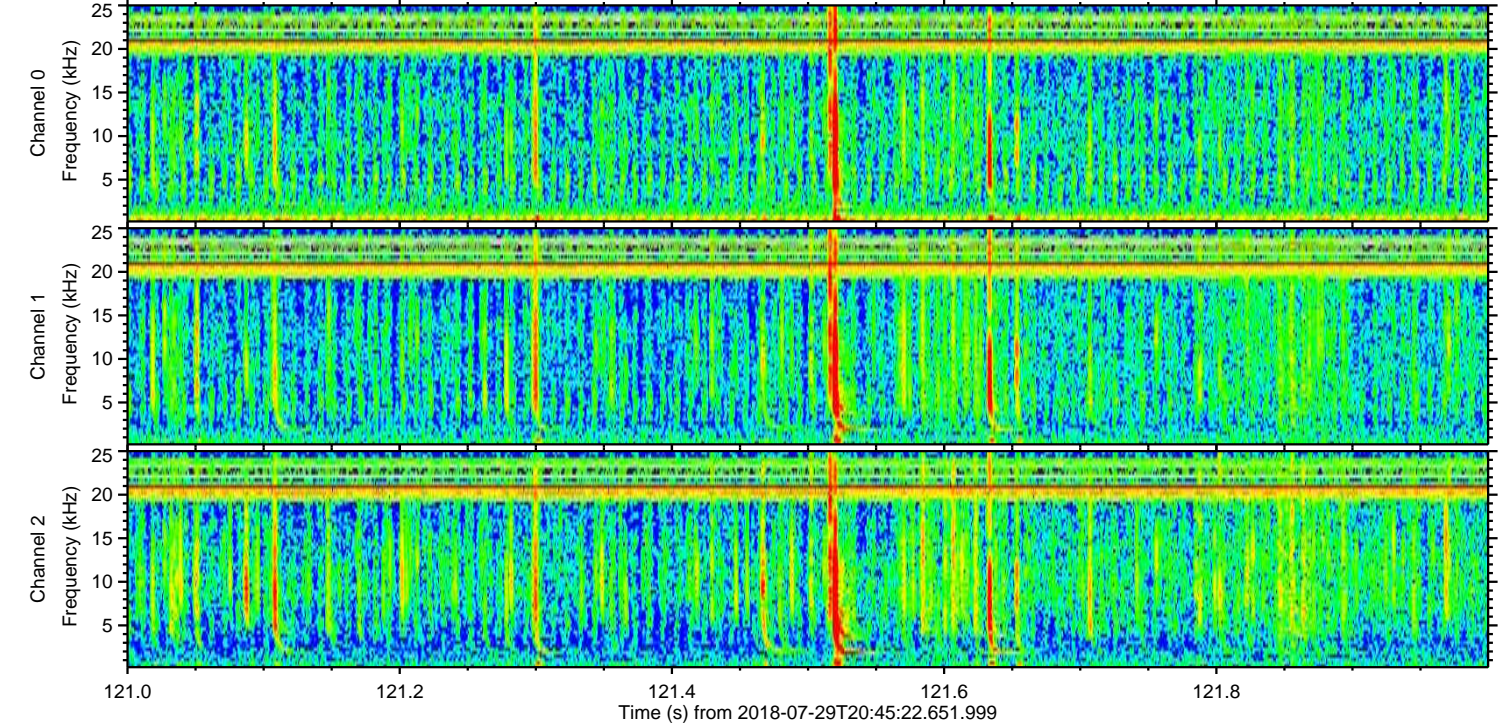
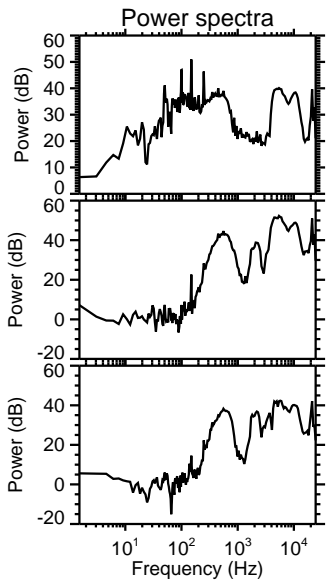
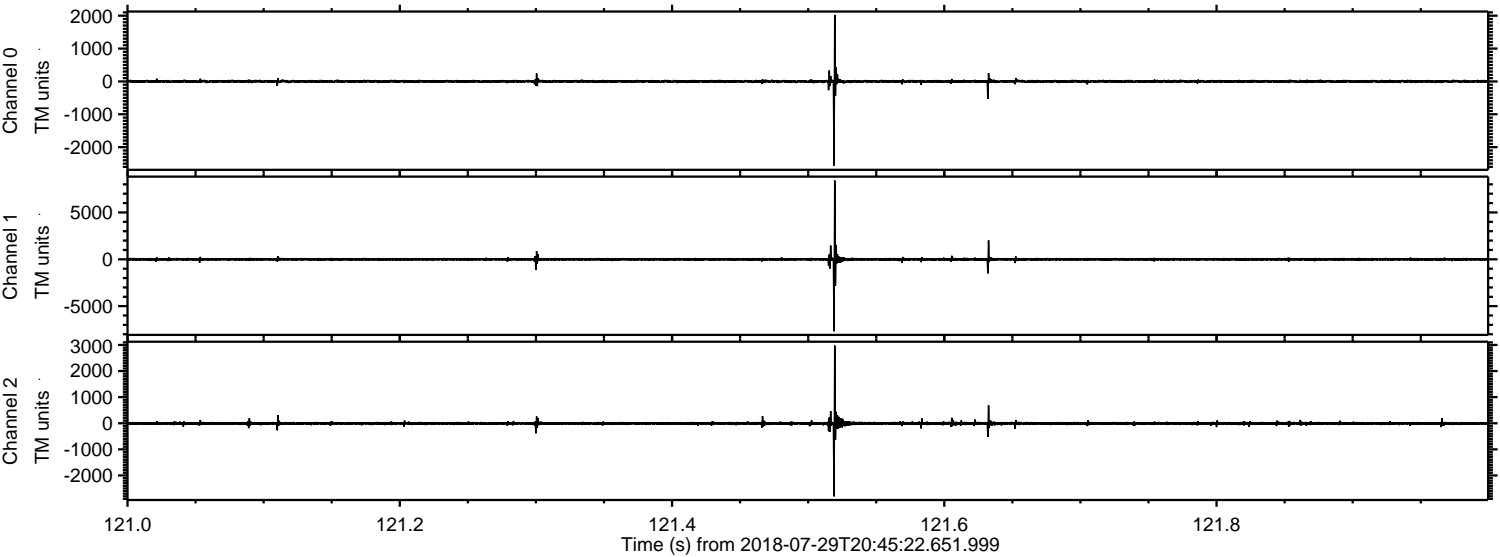
ELMAVAN 3D WAVEFORMS (Measured data sampled at 50 kHz) 51000 packets of 144 samples from 2018-07-29T20:45:22.651.999. Part 101/147

Processed Sun Jul 29 22:53:06 2018 by ELM ver.2012-10-06 from 001__elm20180729_204521__dat00.bin



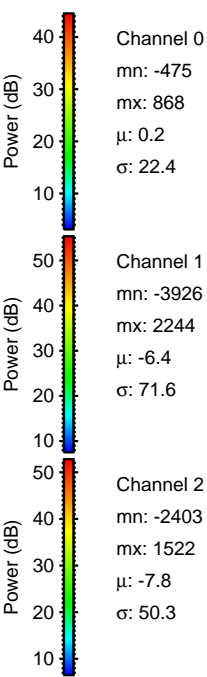
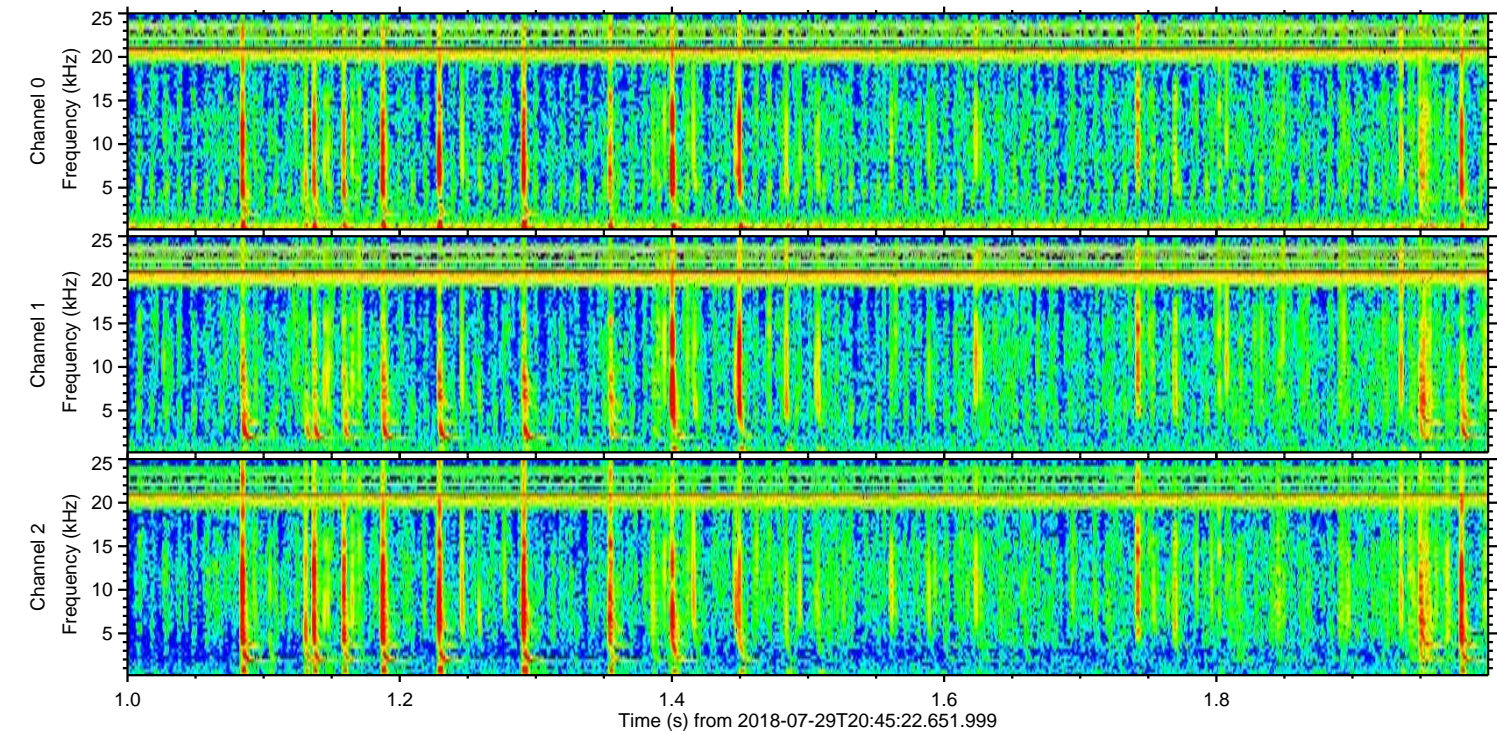
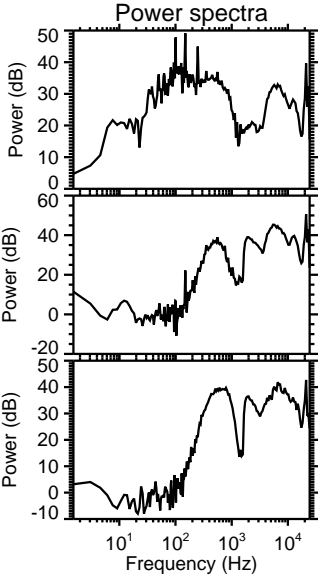
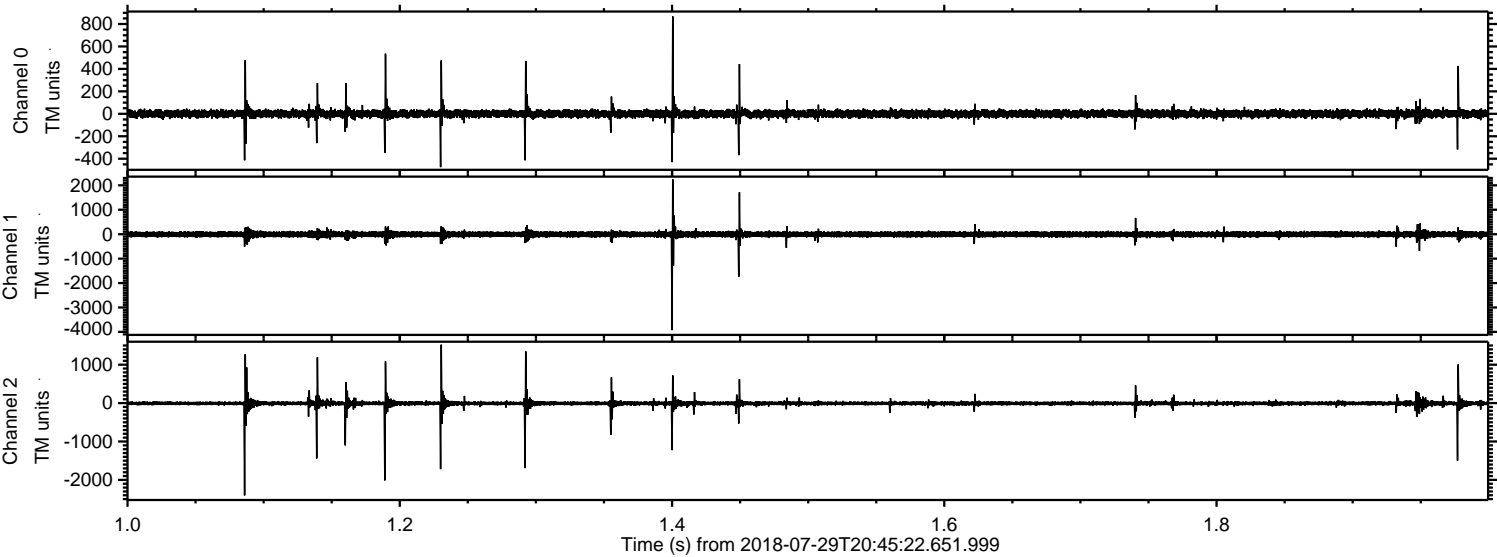
ELMAVAN 3D WAVEFORMS (Measured data sampled at 50 kHz) 51000 packets of 144 samples from 2018-07-29T20:45:22.651.999. Part 122/147

Processed Sun Jul 29 22:53:07 2018 by ELM ver.2012-10-06 from 001__elm20180729_204521__dat00.bin

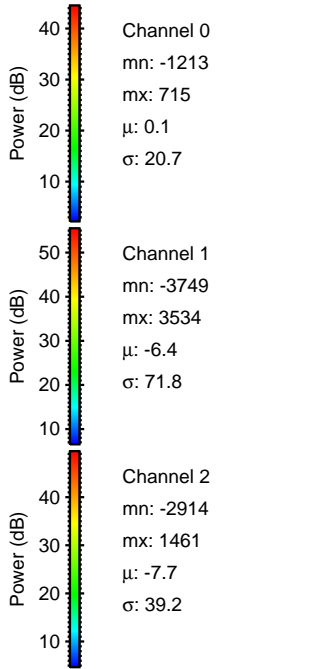
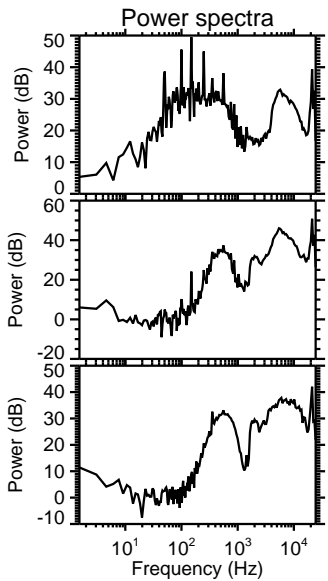
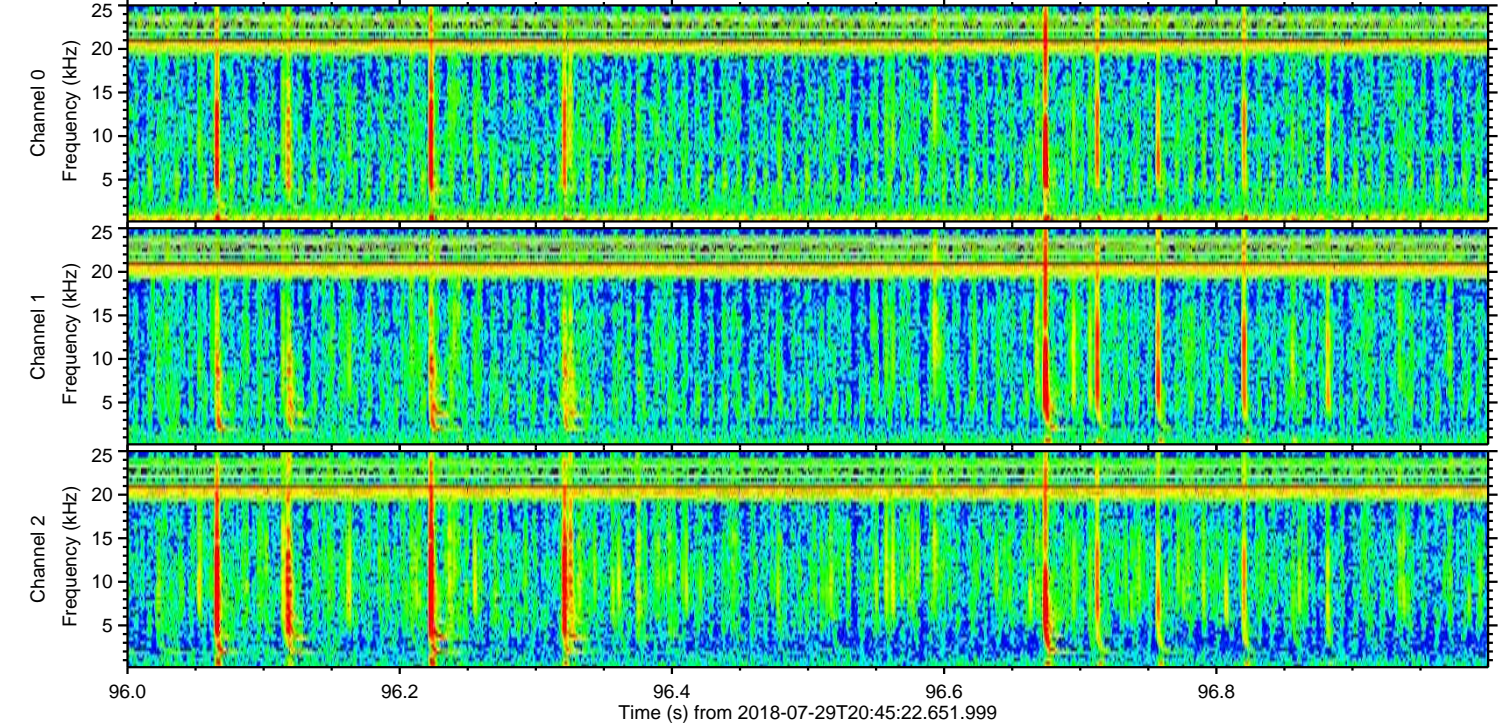
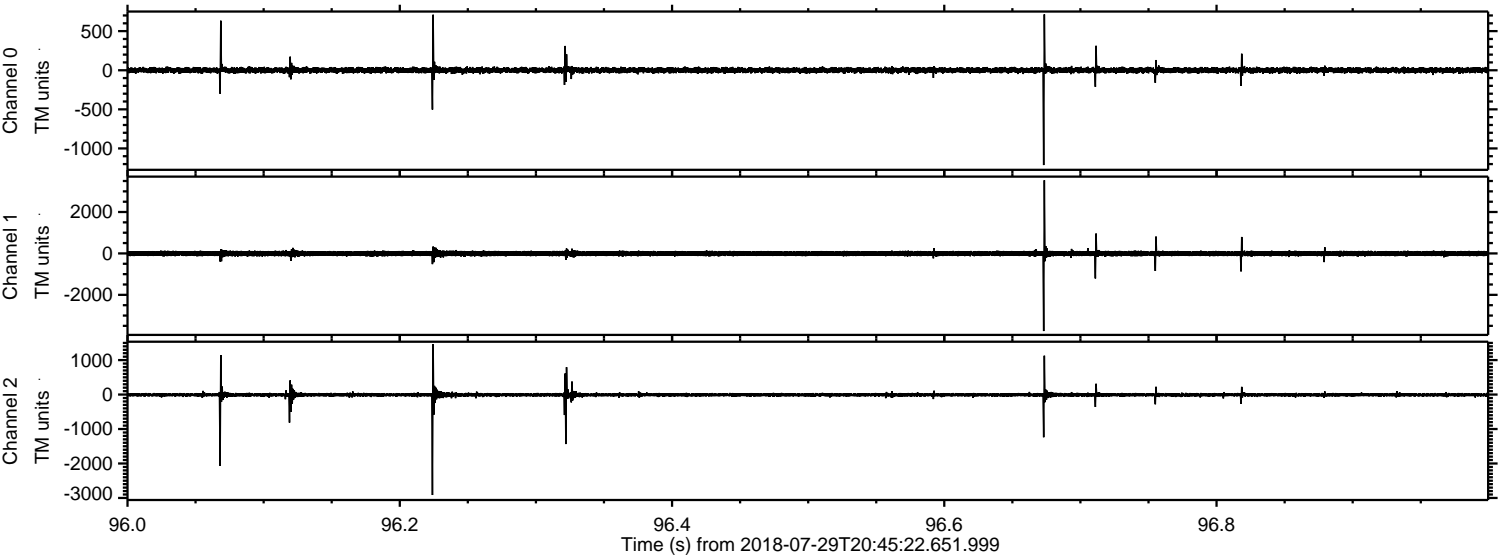


ELMAVAN 3D WAVEFORMS (Measured data sampled at 50 kHz) 51000 packets of 144 samples from 2018-07-29T20:45:22.651.999. Part 2/147

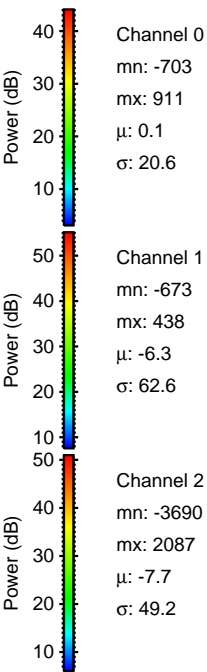
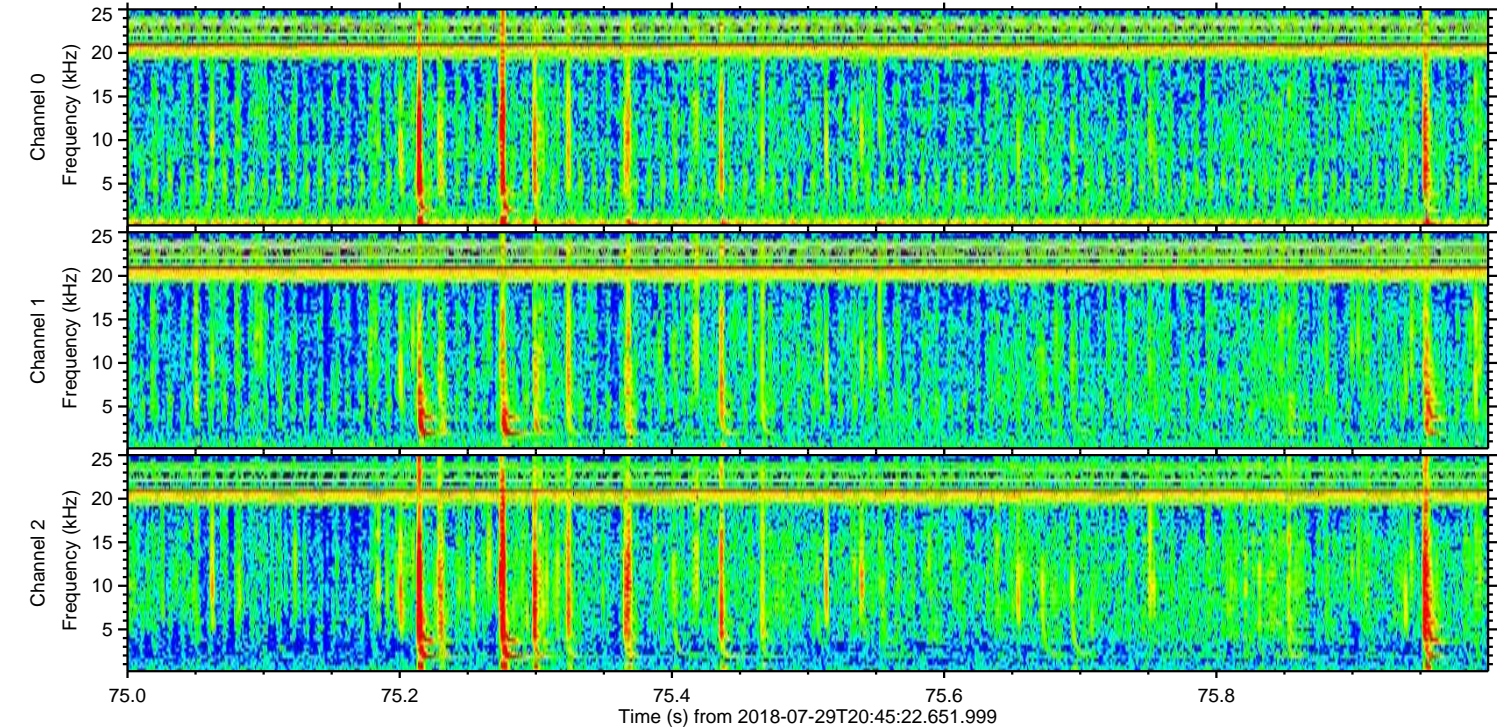
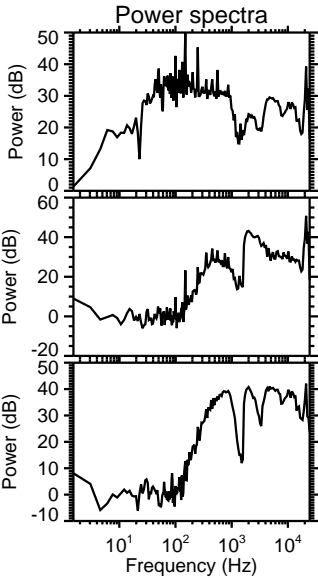
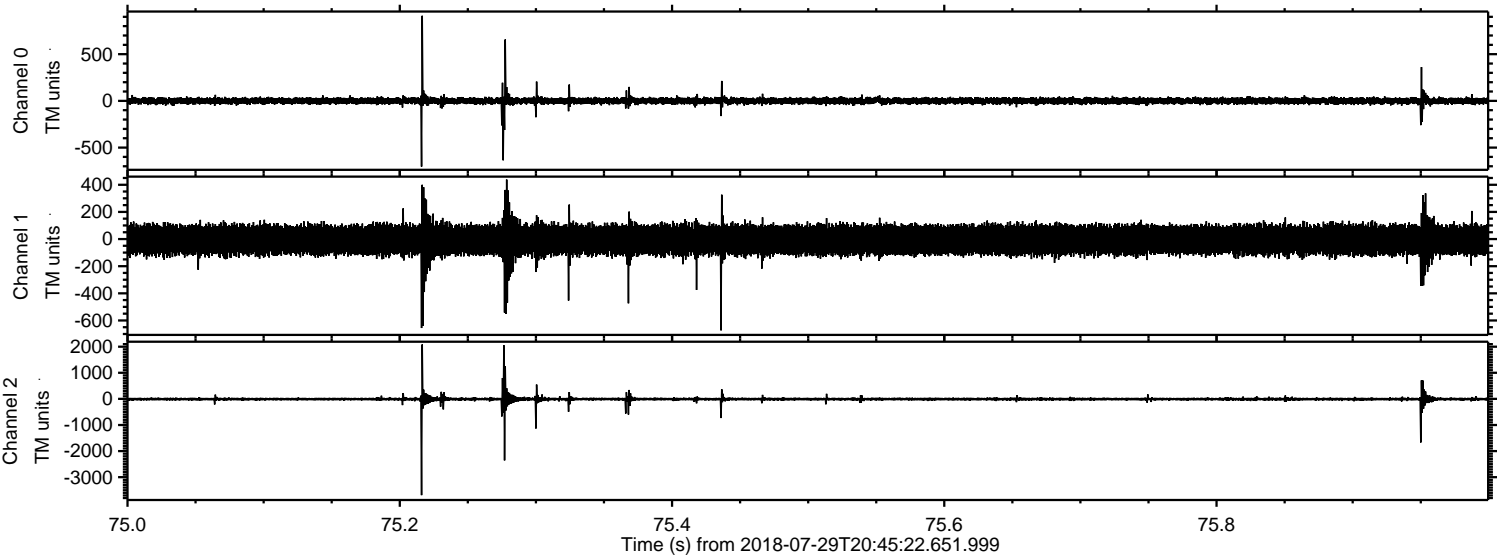
Processed Sun Jul 29 22:53:07 2018 by ELM ver.2012-10-06 from 001__elm20180729_204521__dat00.bin



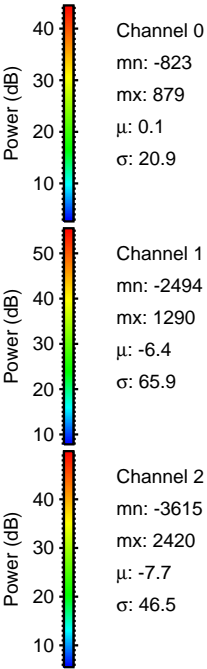
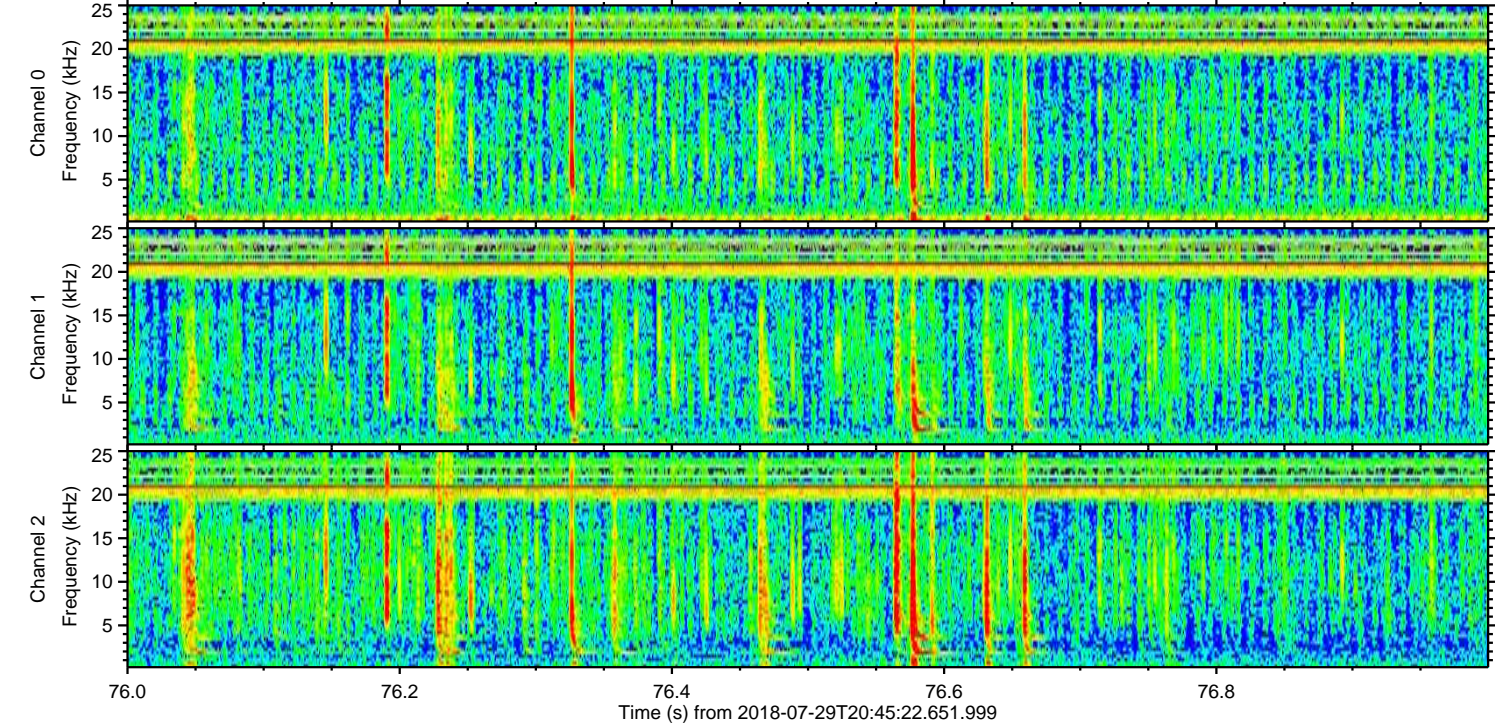
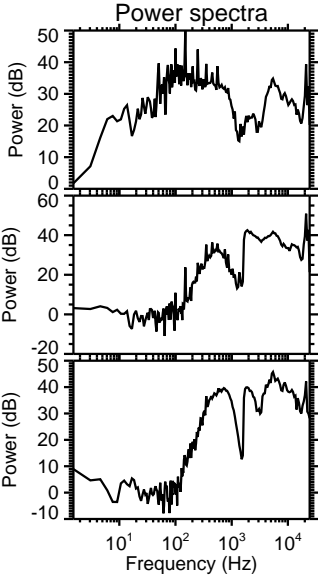
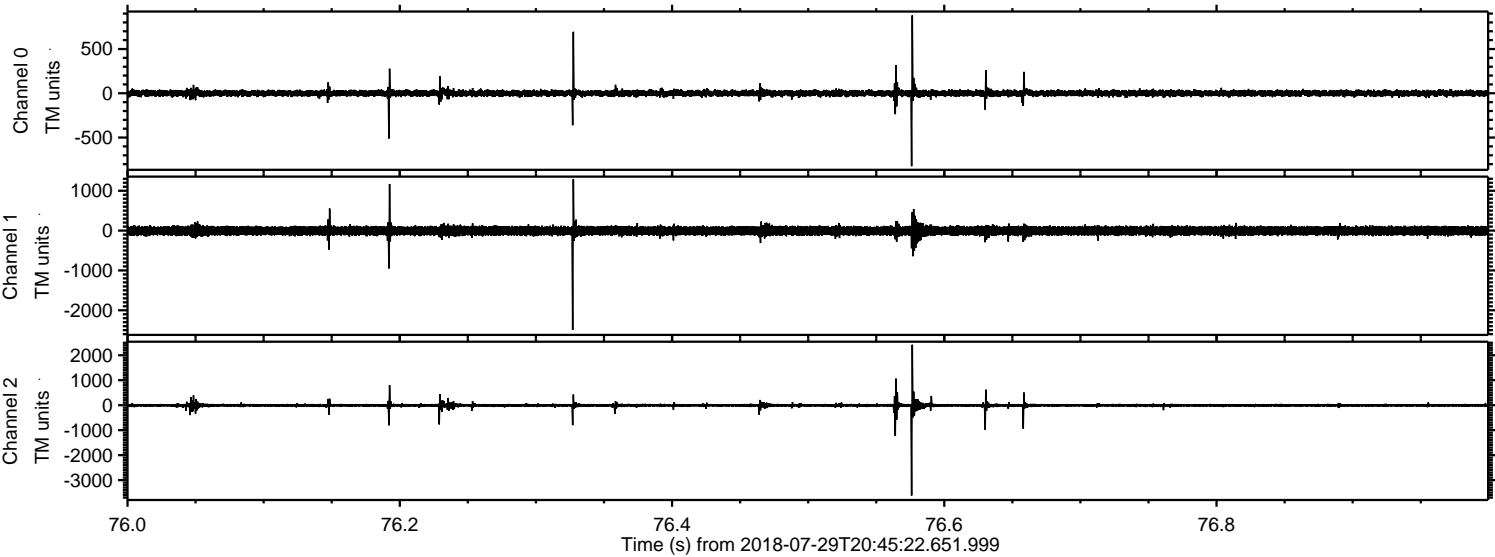
Processed Sun Jul 29 22:53:08 2018 by ELM ver.2012-10-06 from 001__elm20180729_204521__dat00.bin



Processed Sun Jul 29 22:53:09 2018 by ELM ver.2012-10-06 from 001__elm20180729_204521__dat00.bin

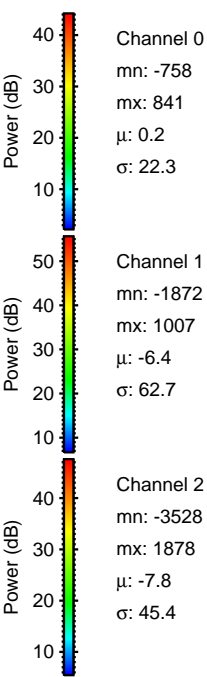
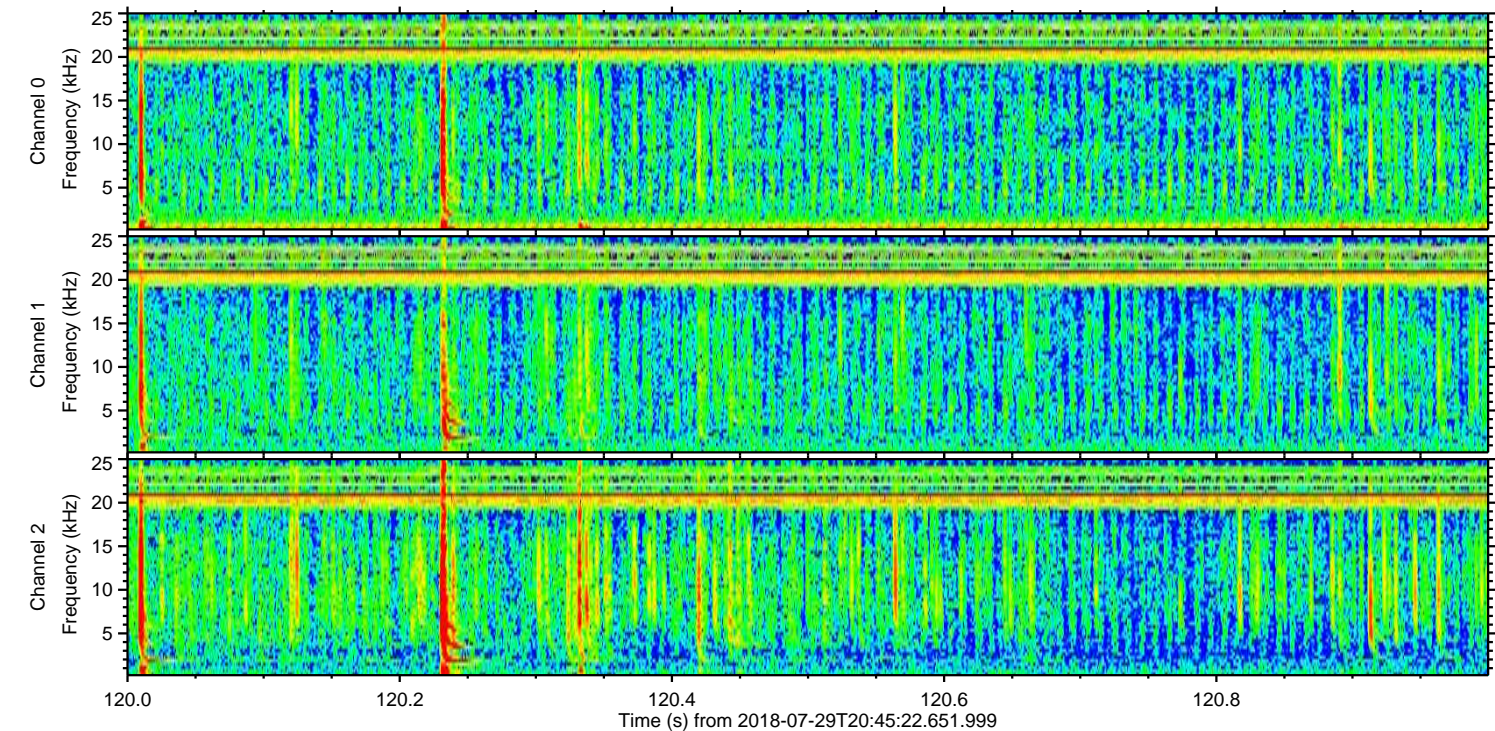
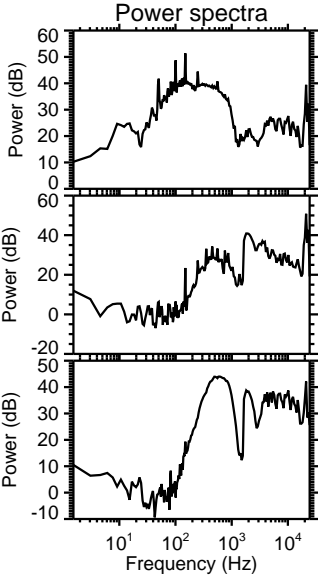
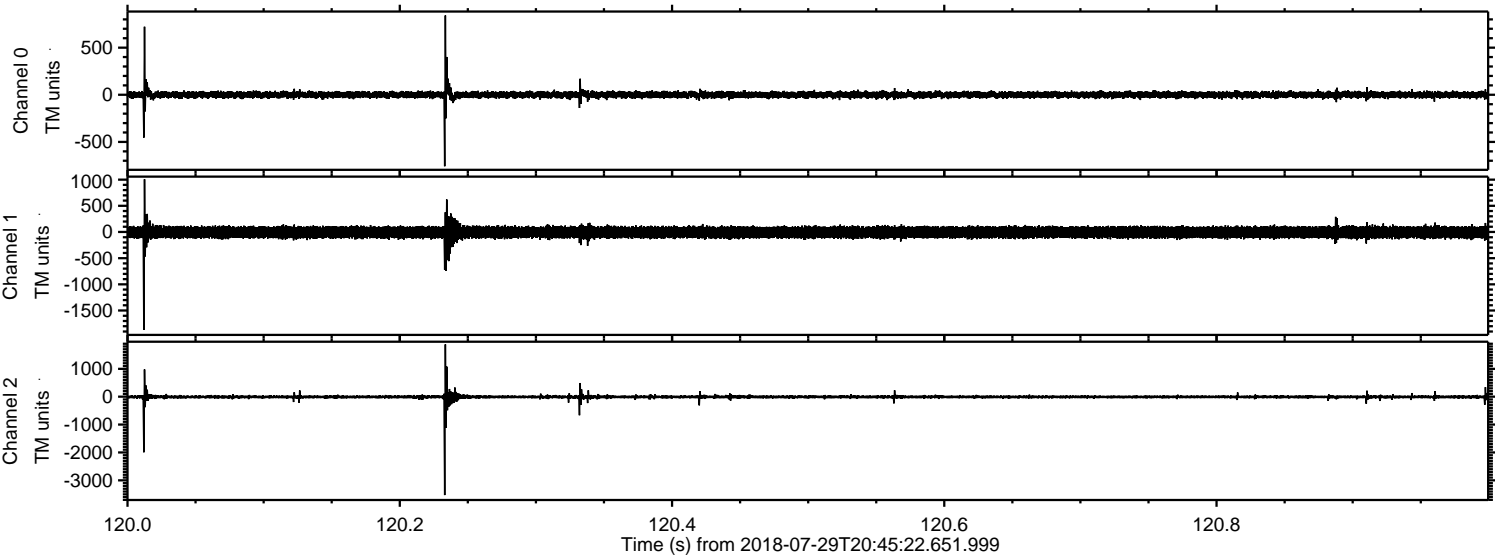


Processed Sun Jul 29 22:53:09 2018 by ELM ver.2012-10-06 from 001__elm20180729_204521__dat00.bin



ELMAVAN 3D WAVEFORMS (Measured data sampled at 50 kHz) 51000 packets of 144 samples from 2018-07-29T20:45:22.651.999. Part 121/147

Processed Sun Jul 29 22:53:10 2018 by ELM ver.2012-10-06 from 001__elm20180729_204521__dat00.bin

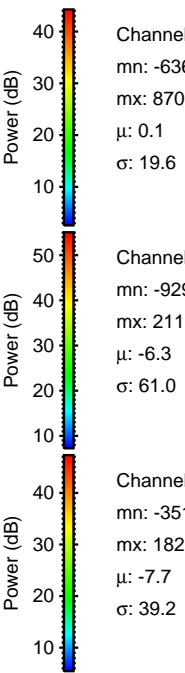
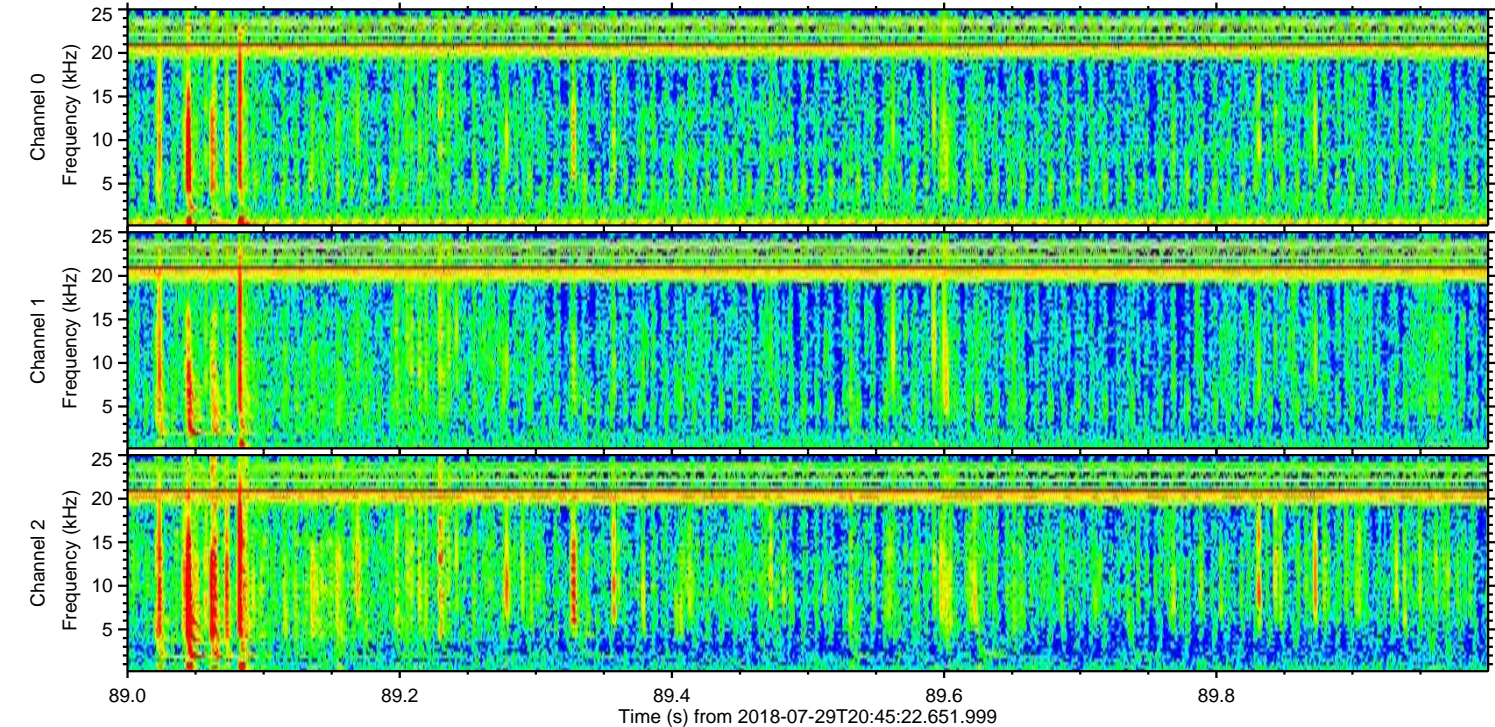
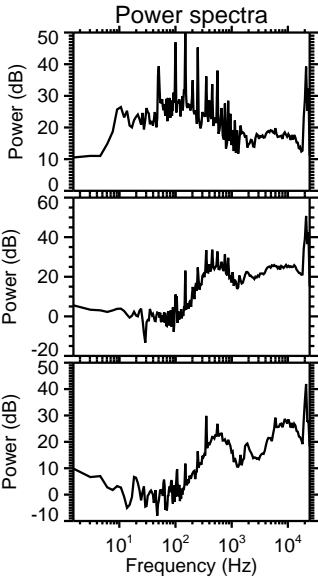
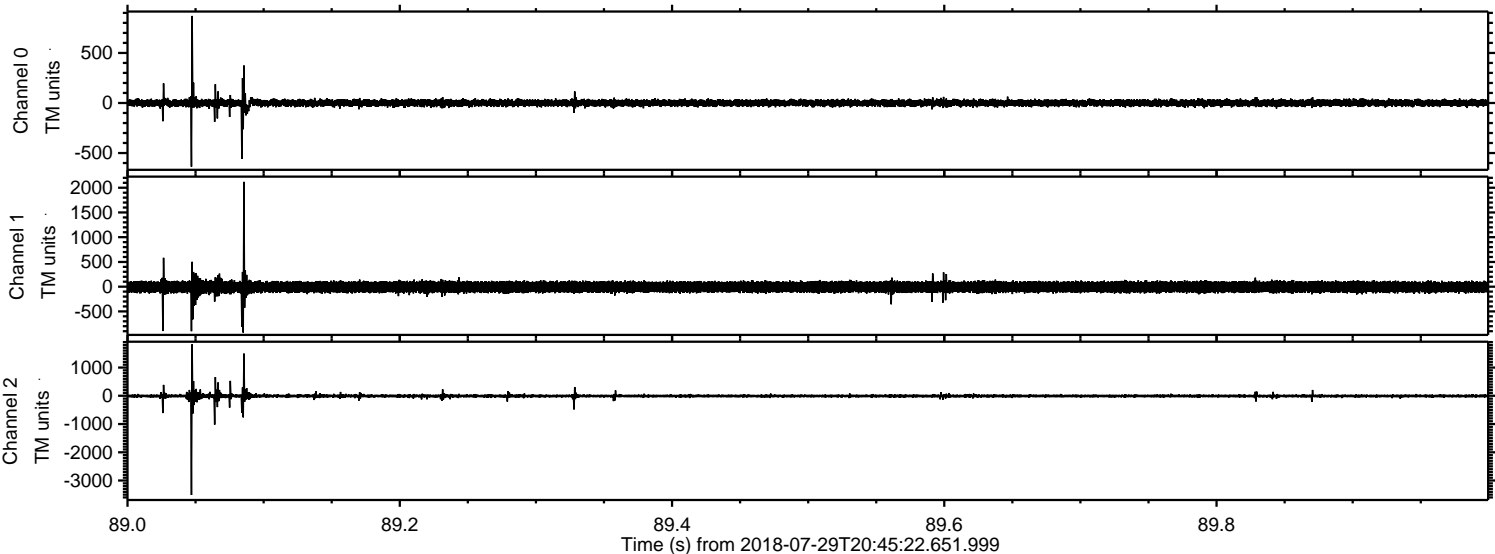


Channel 0
mn: -758
mx: 841
 μ : 0.2
 σ : 22.3

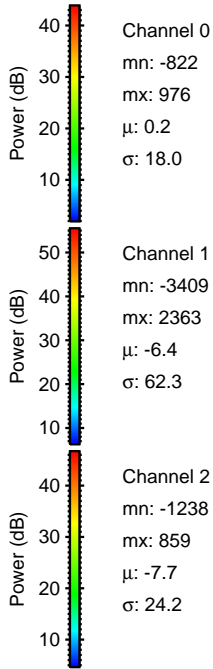
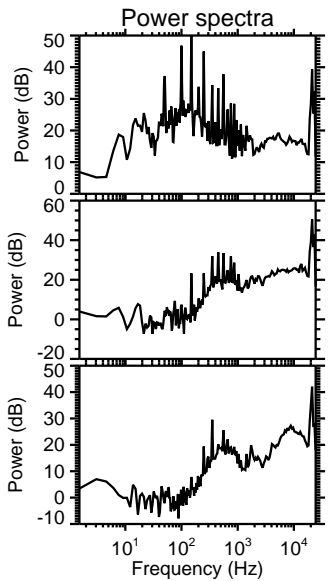
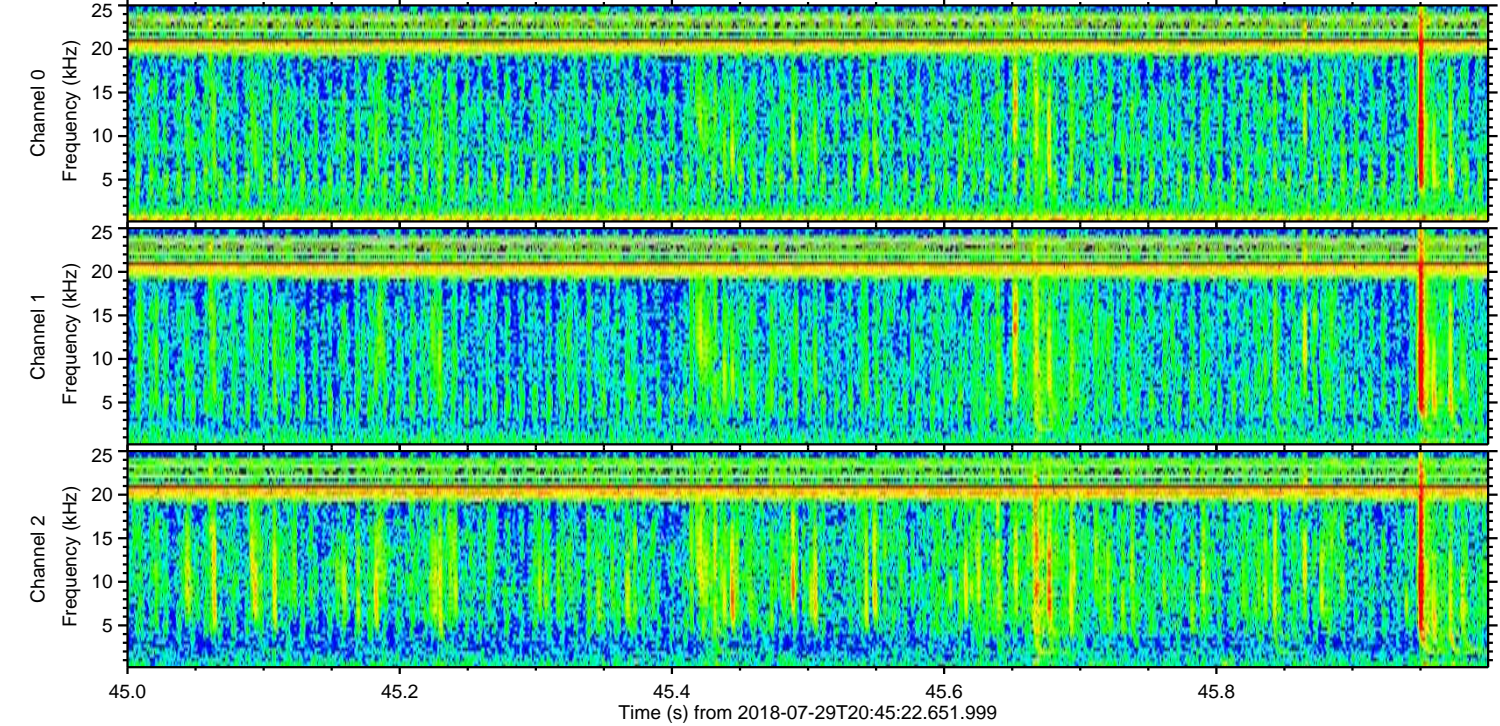
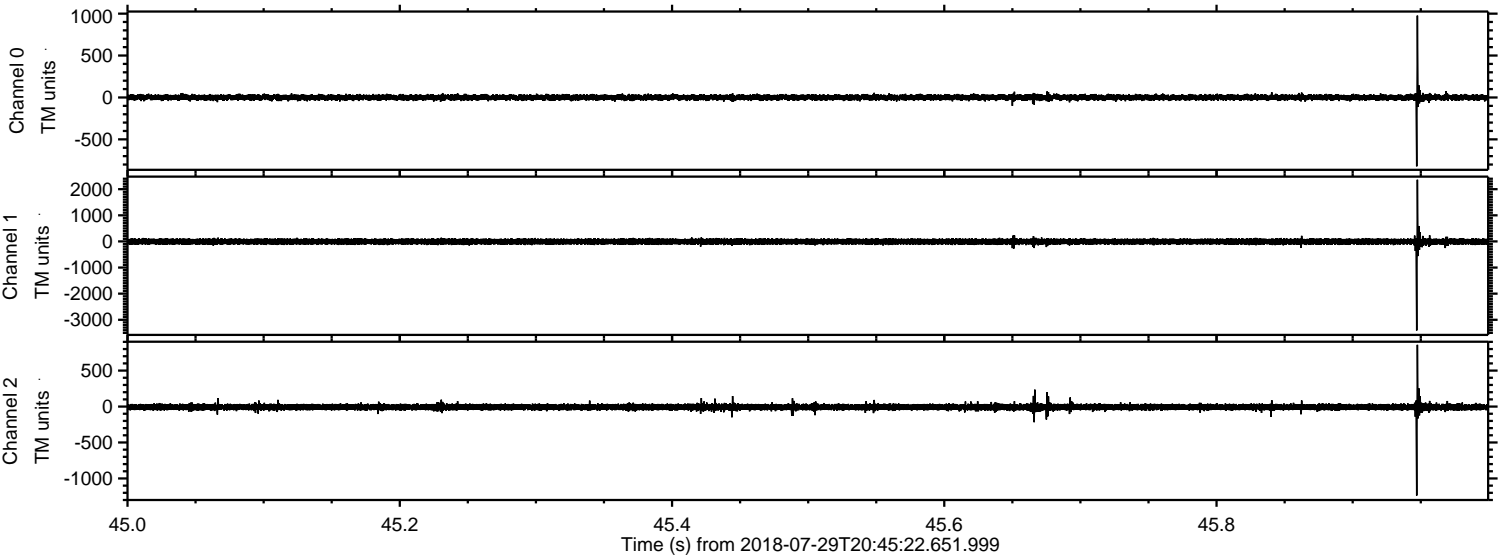
Channel 1
mn: -1872
mx: 1007
 μ : -6.4
 σ : 62.7

Channel 2
mn: -3528
mx: 1878
 μ : -7.8
 σ : 45.4

Processed Sun Jul 29 22:53:11 2018 by ELM ver.2012-10-06 from 001__elm20180729_204521__dat00.bin



Processed Sun Jul 29 22:53:11 2018 by ELM ver.2012-10-06 from 001__elm20180729_204521__dat00.bin



Channel 0
mn: -822
mx: 976
 μ : 0.2
 σ : 18.0

Channel 1
mn: -3409
mx: 2363
 μ : -6.4
 σ : 62.3

Channel 2
mn: -1238
mx: 859
 μ : -7.7
 σ : 24.2

Processed Sun Jul 29 22:53:12 2018 by ELM ver.2012-10-06 from 001__elm20180729_204521__dat00.bin

