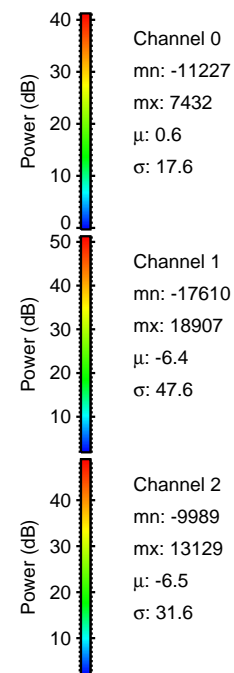
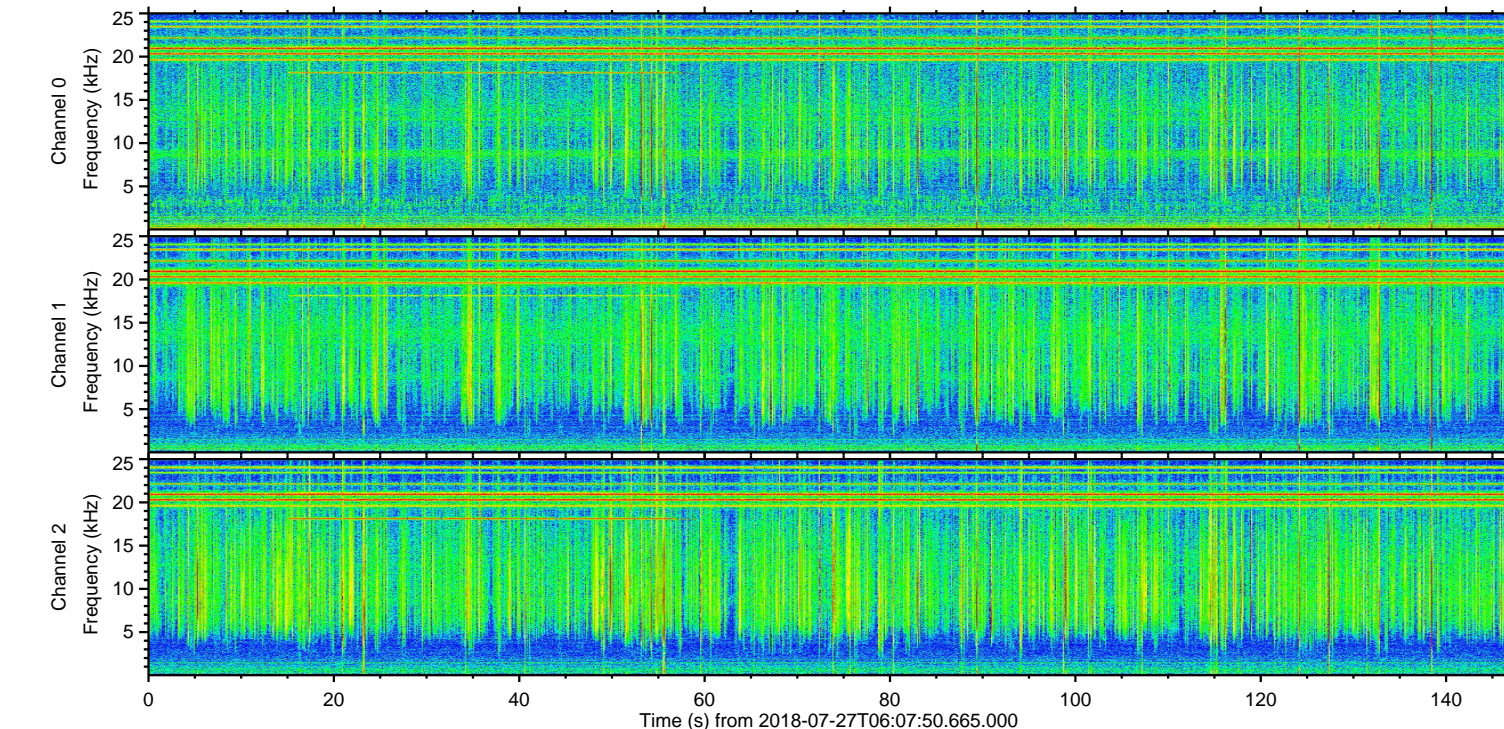
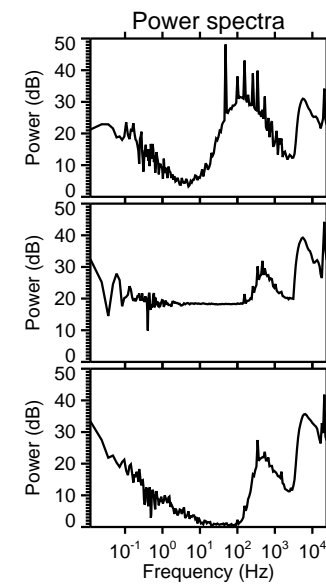
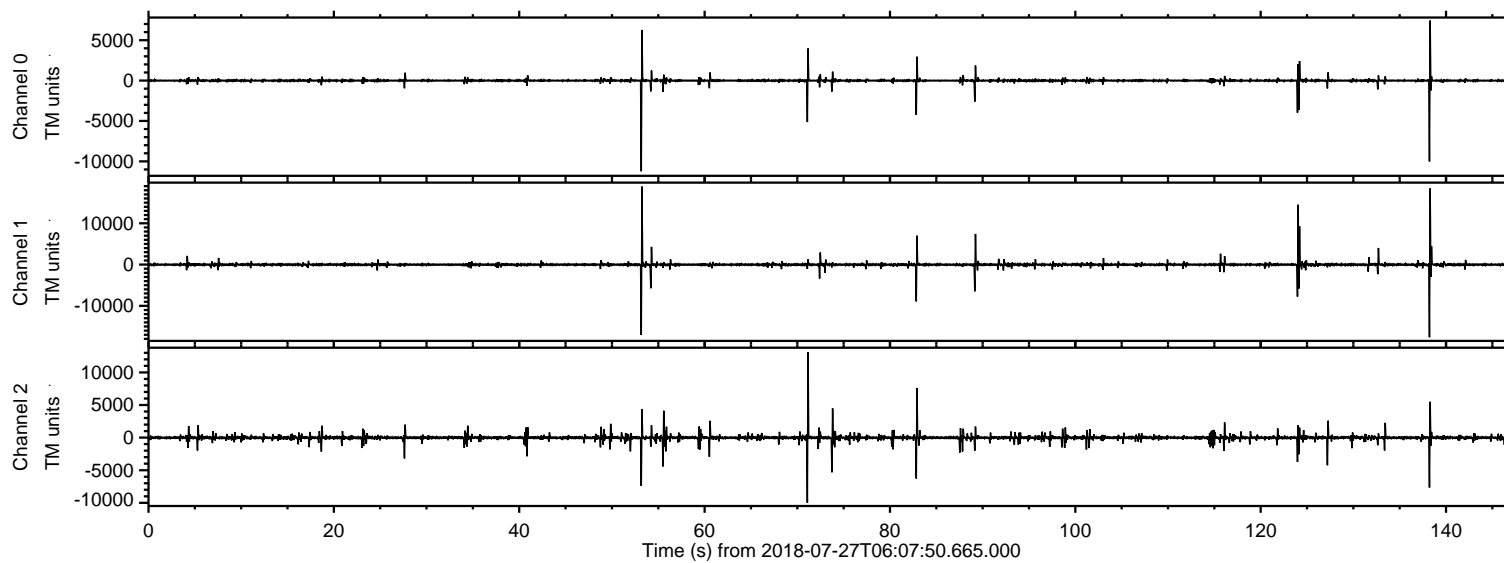
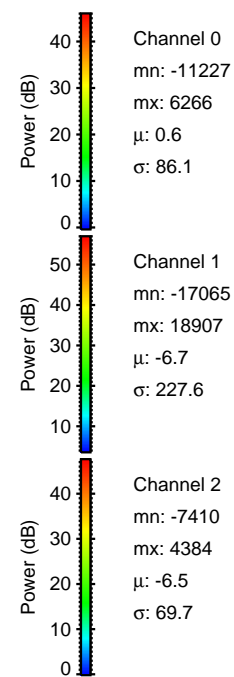
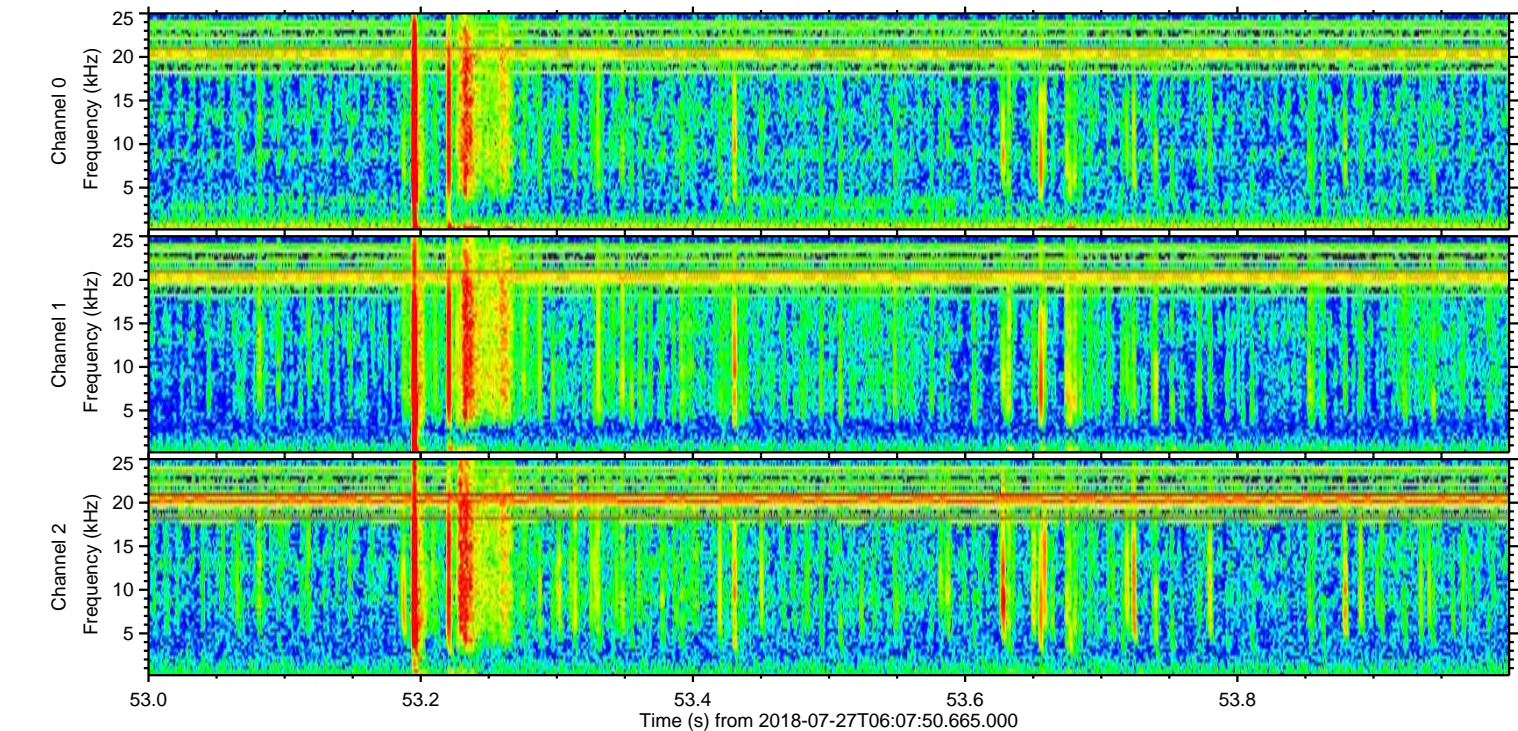
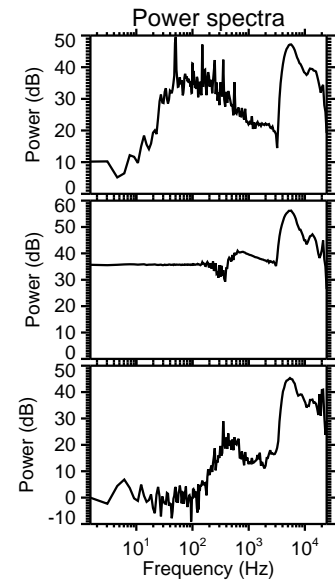
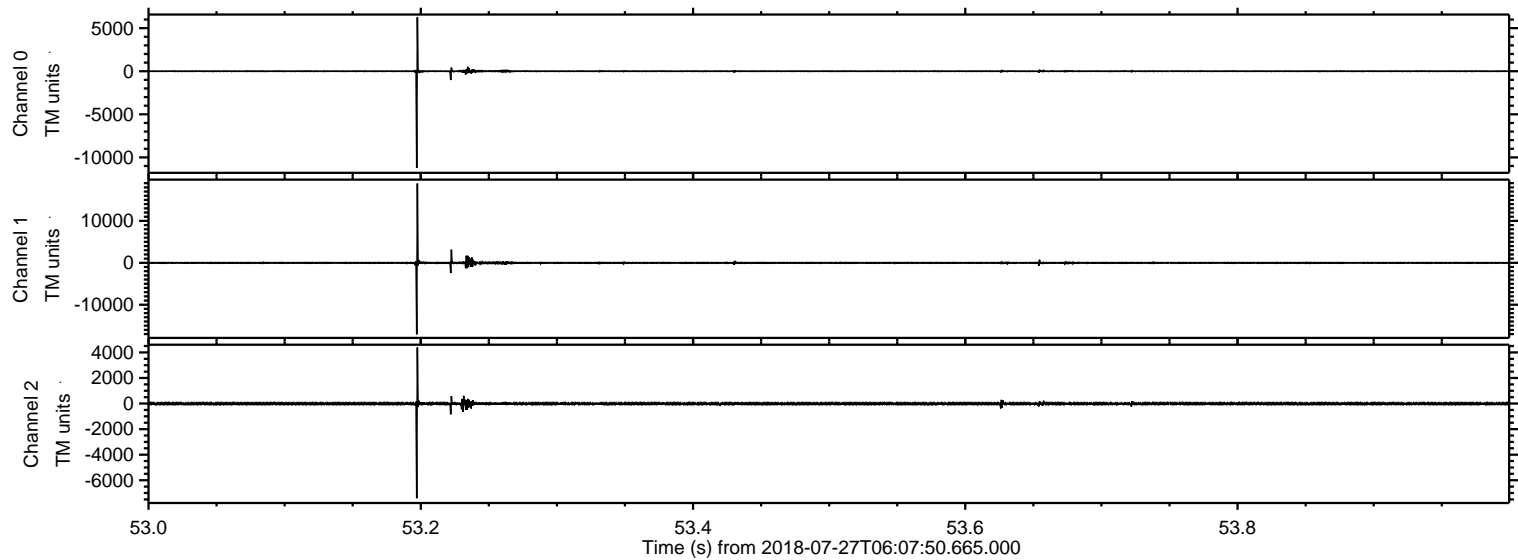


ELMAVAN 3D WAVEFORMS (Measured data sampled at 50 kHz) 51000 packets of 144 samples from 2018-07-27T06:07:50.665.000.

Processed Fri Jul 27 08:15:30 2018 by ELM ver.2012-10-06 from 001__elm20180727_060749__dat00.bin

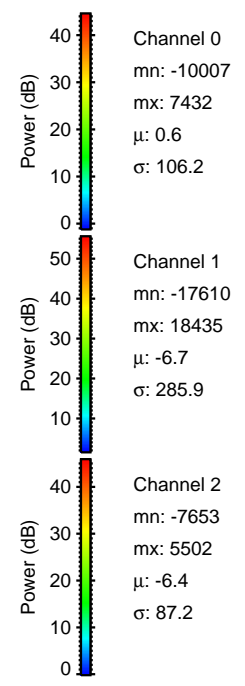
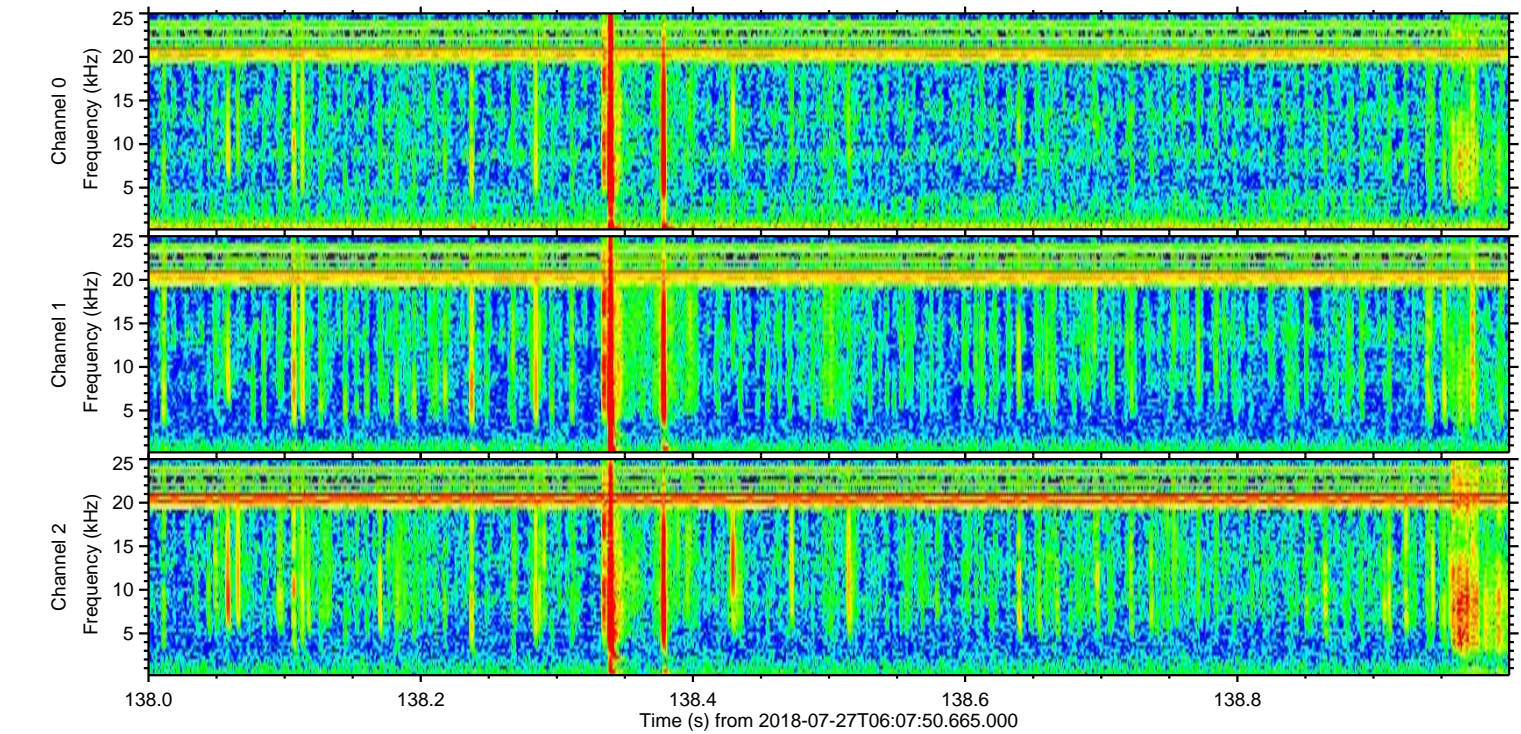
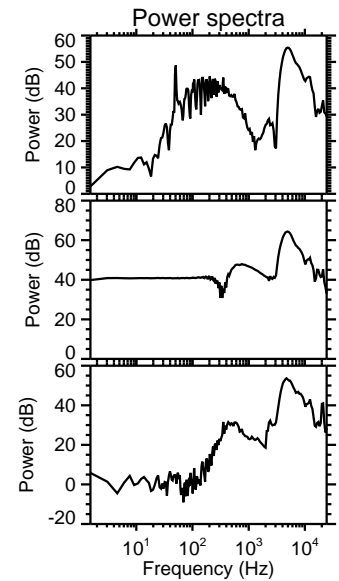
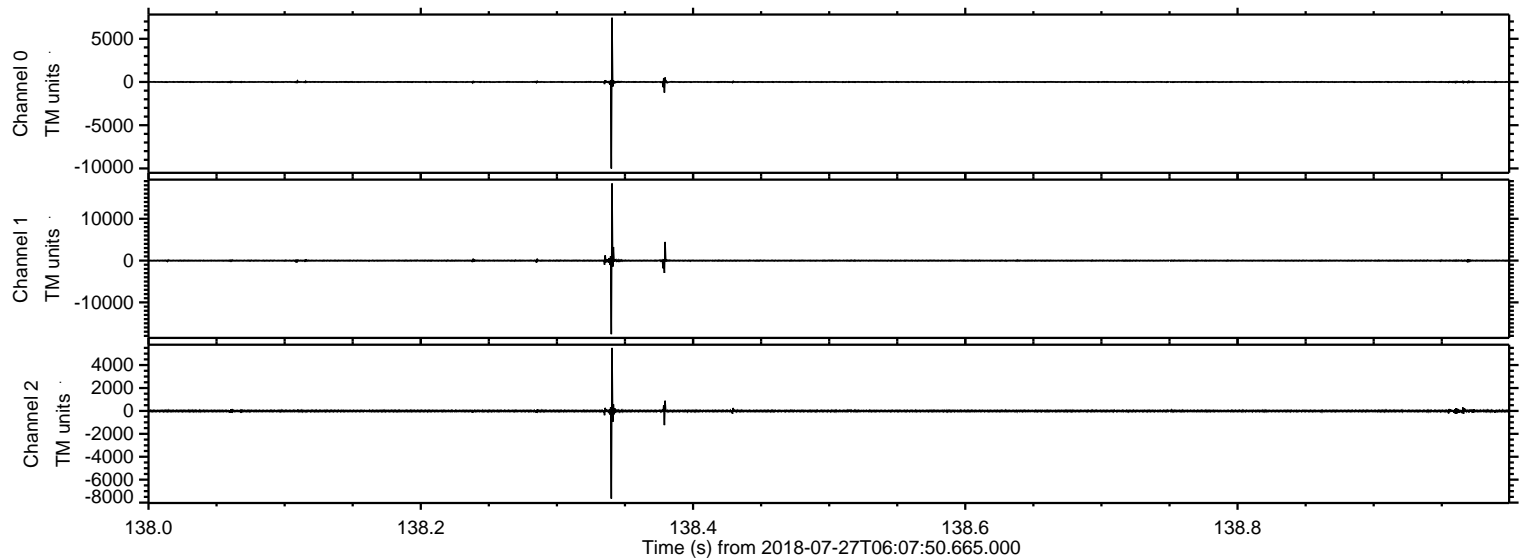


Processed Fri Jul 27 08:15:36 2018 by ELM ver.2012-10-06 from 001__elm20180727_060749__dat00.bin



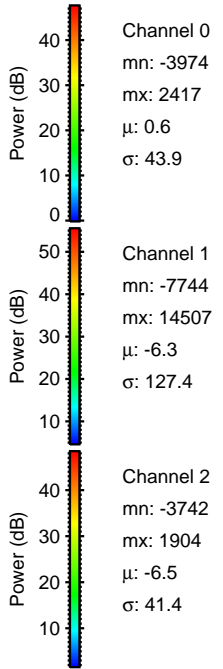
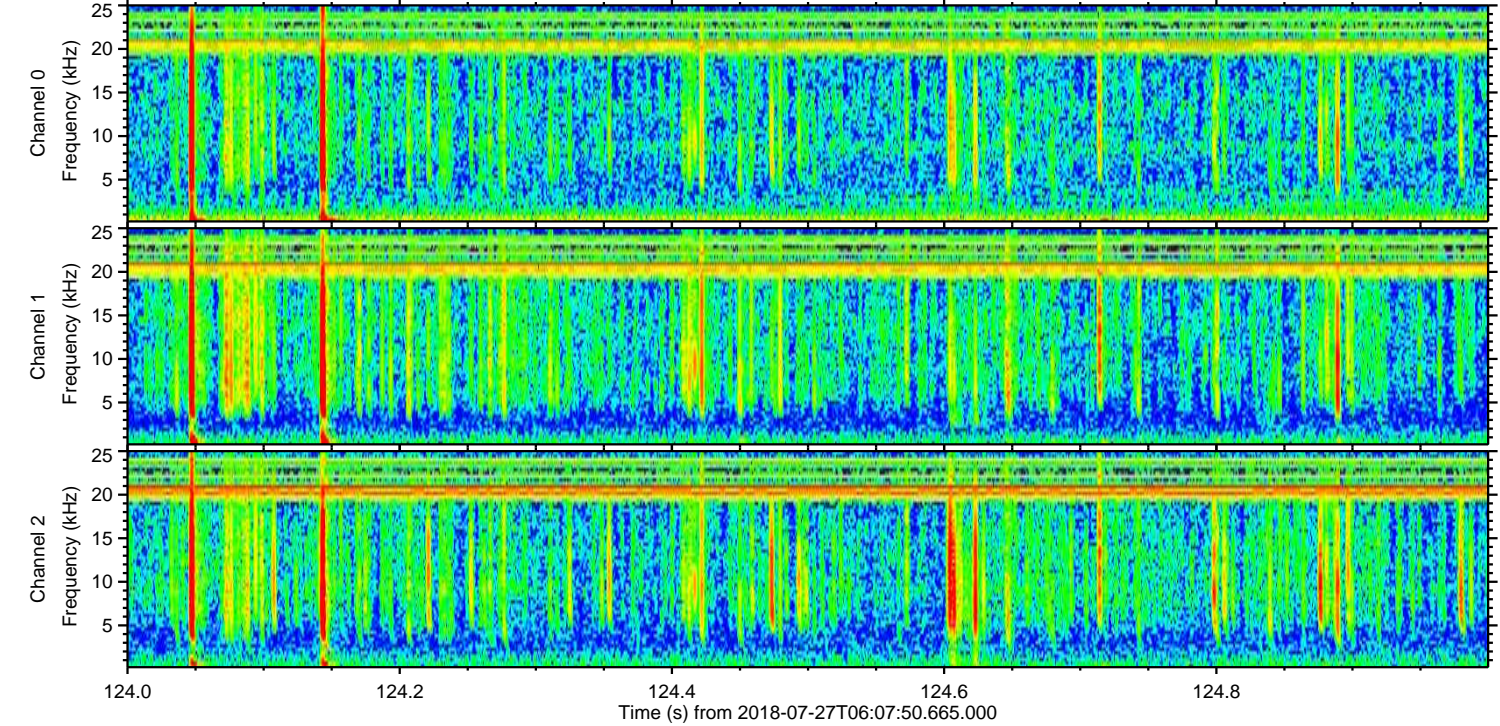
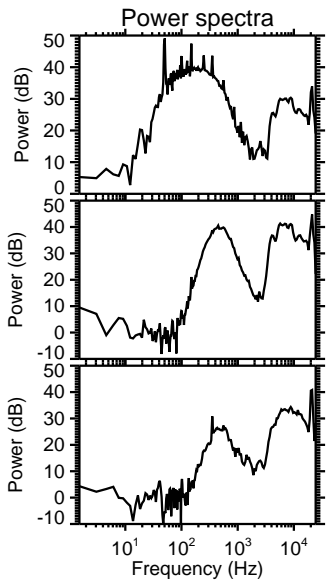
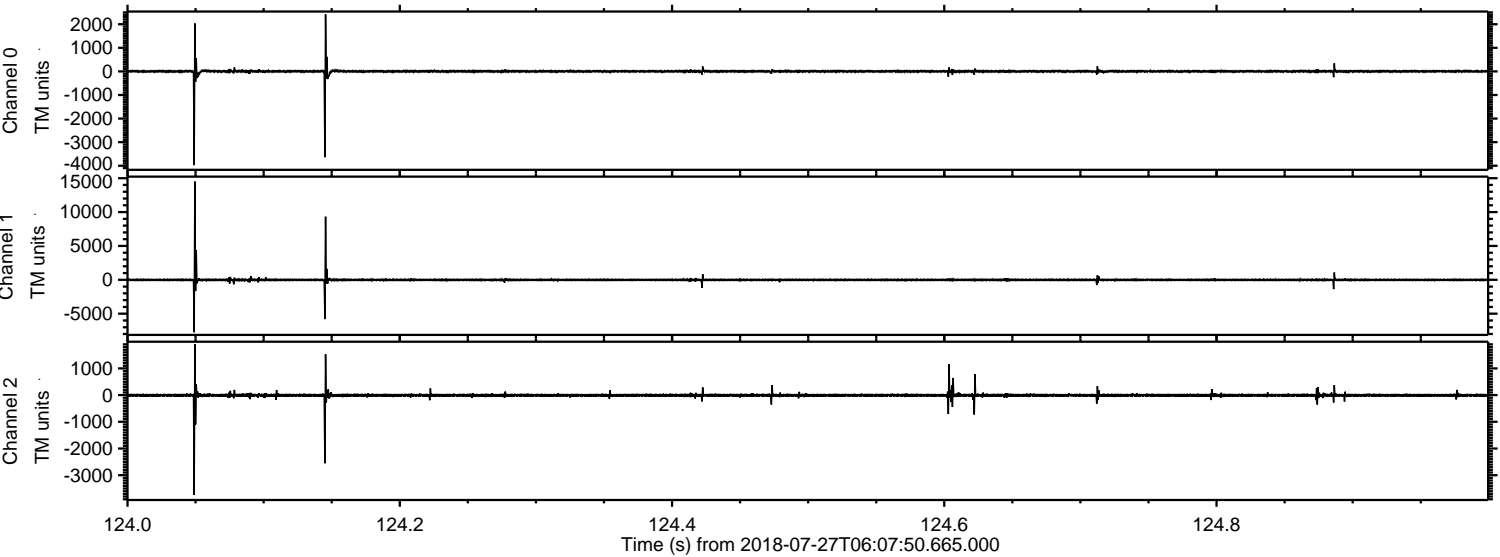
ELMAVAN 3D WAVEFORMS (Measured data sampled at 50 kHz) 51000 packets of 144 samples from 2018-07-27T06:07:50.665.000. Part 139/147

Processed Fri Jul 27 08:15:37 2018 by ELM ver.2012-10-06 from 001__elm20180727_060749__dat00.bin

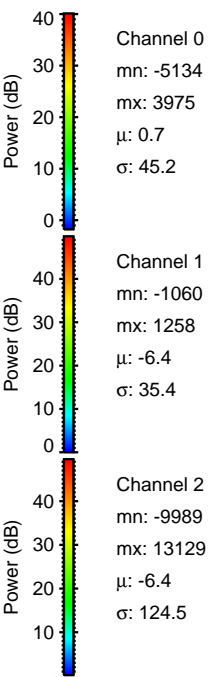
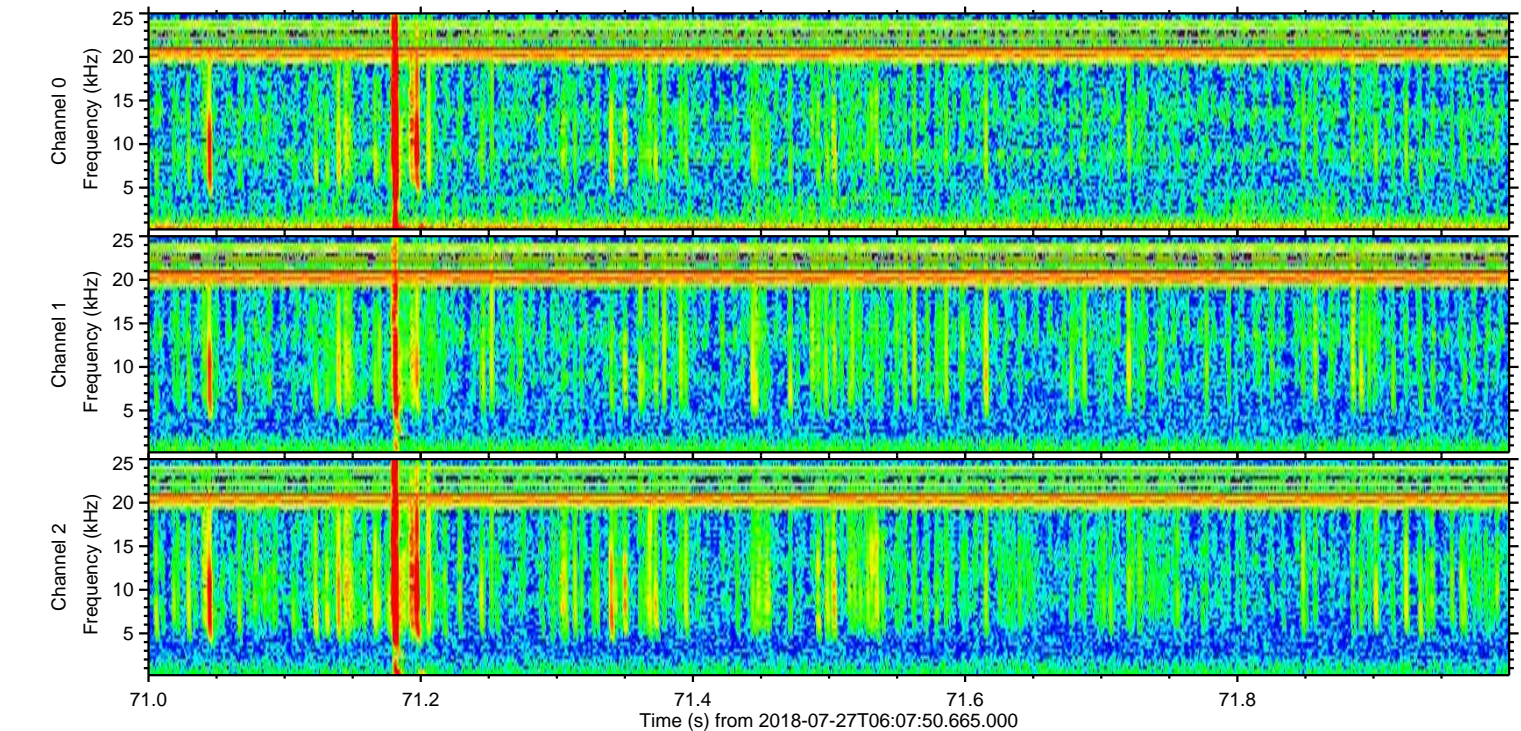
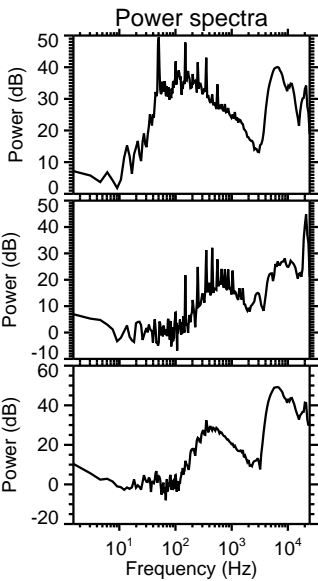
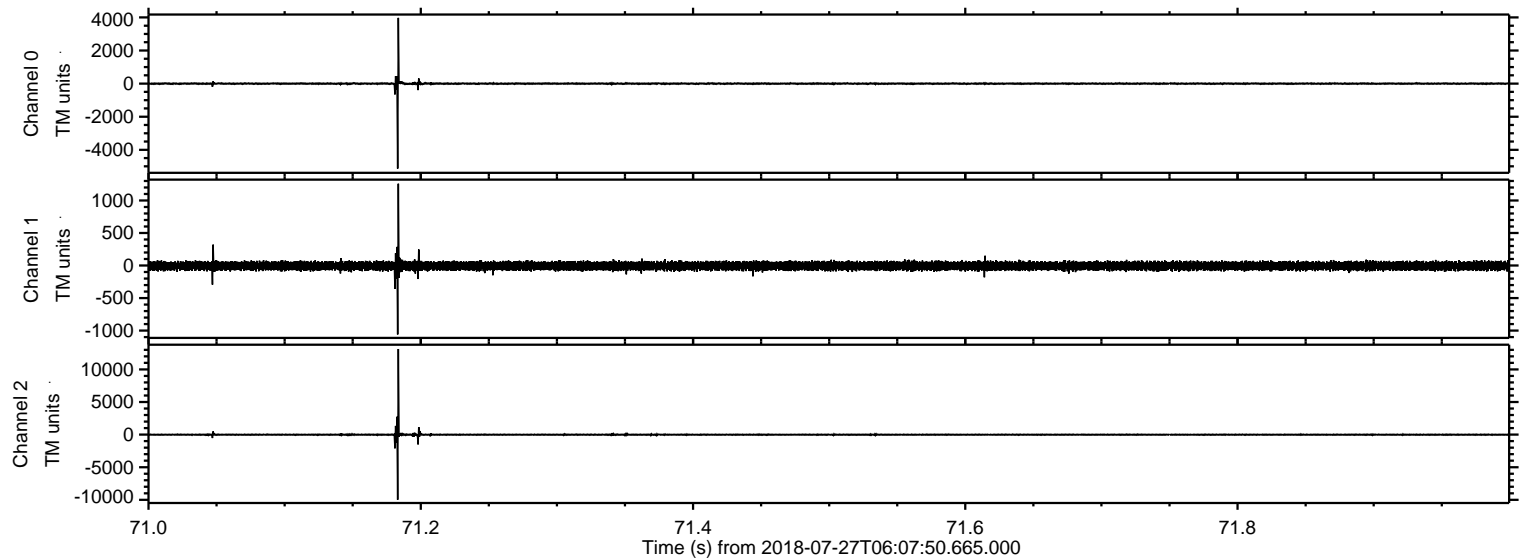


ELMAVAN 3D WAVEFORMS (Measured data sampled at 50 kHz) 51000 packets of 144 samples from 2018-07-27T06:07:50.665.000. Part 125/147

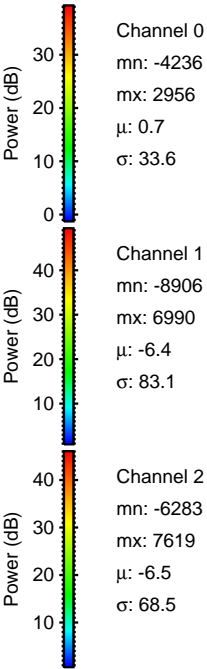
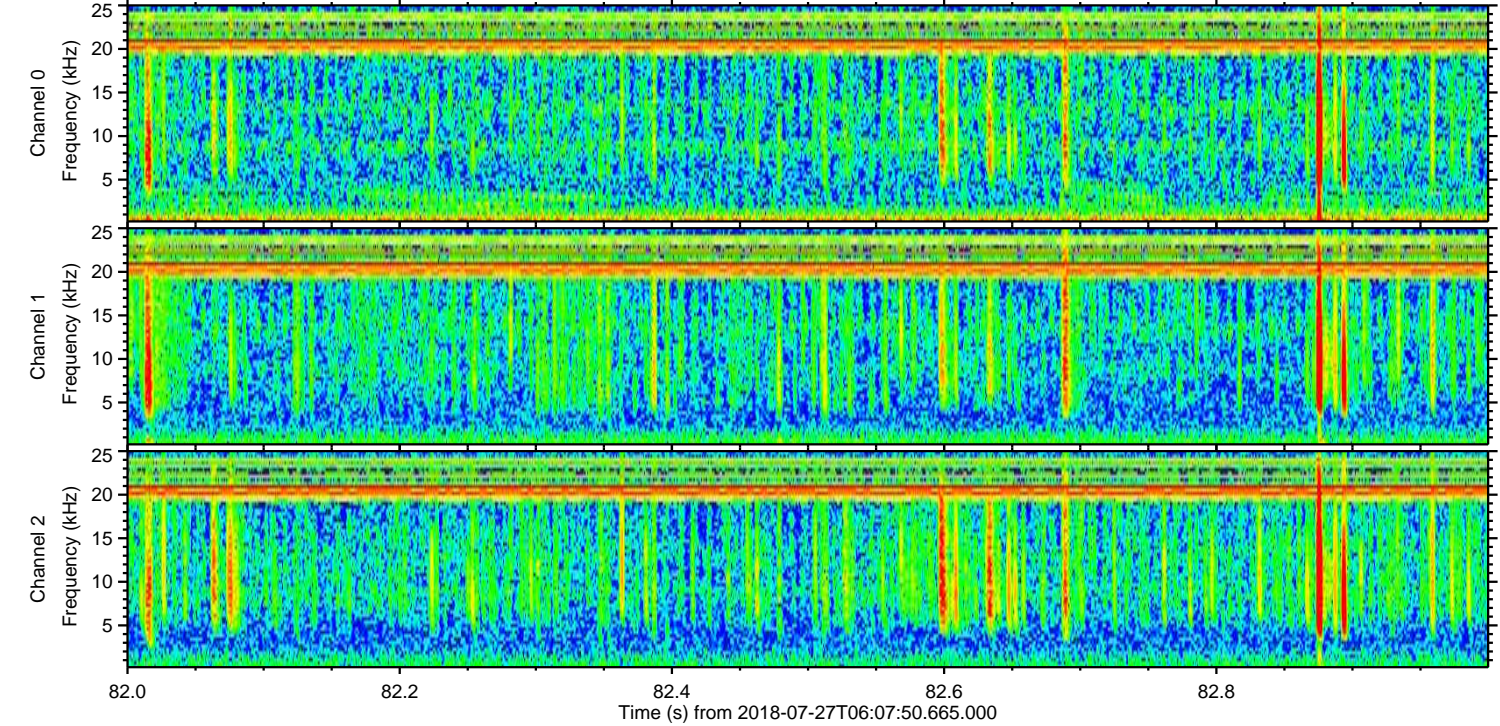
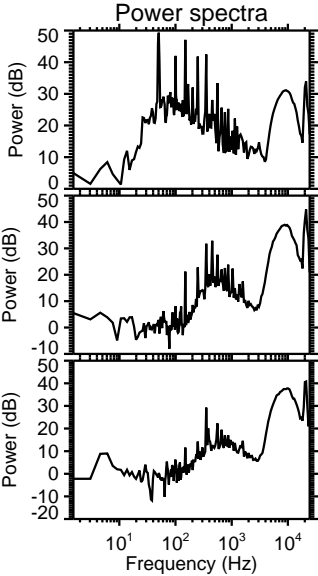
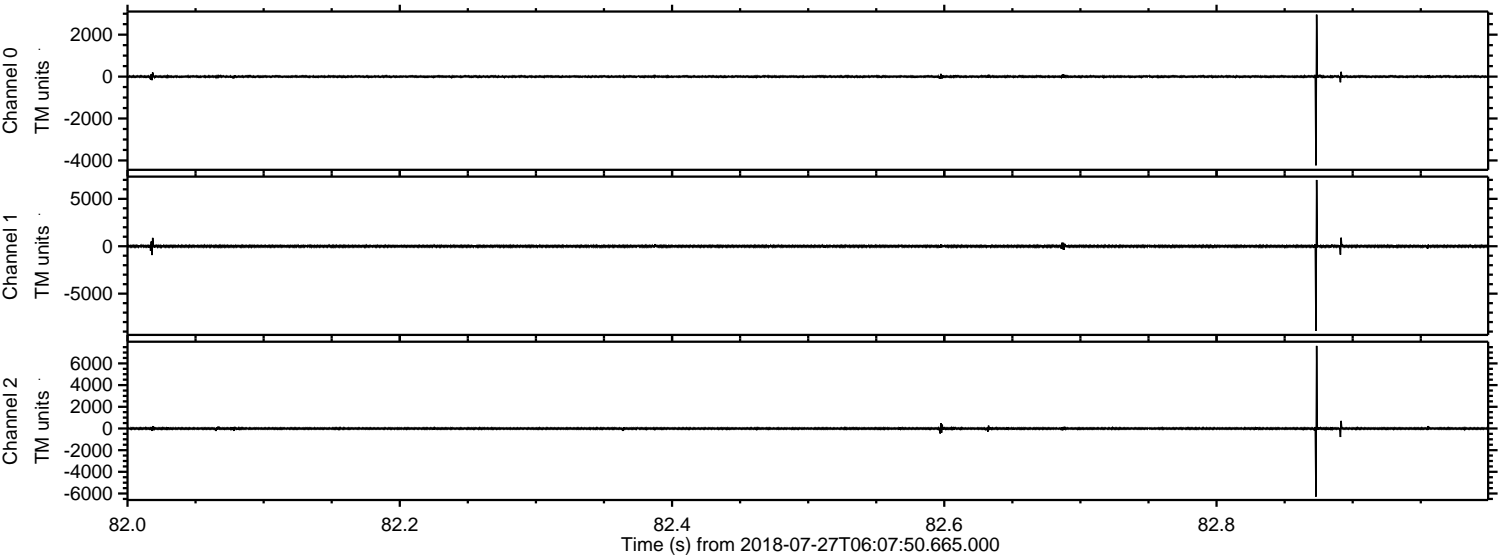
Processed Fri Jul 27 08:15:37 2018 by ELM ver.2012-10-06 from 001__elm20180727_060749__dat00.bin



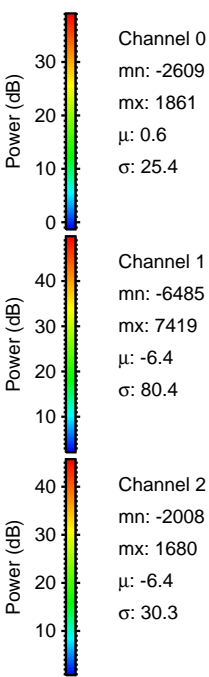
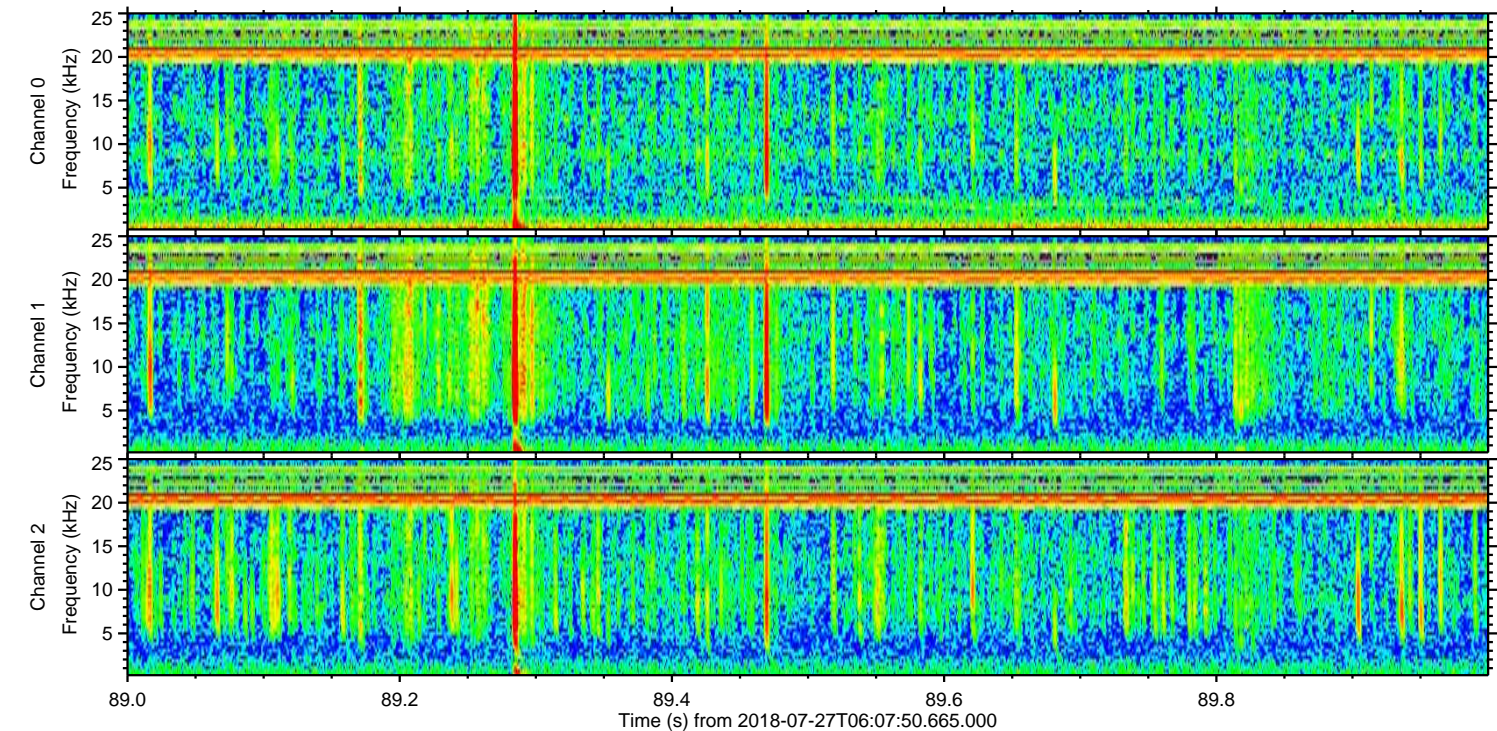
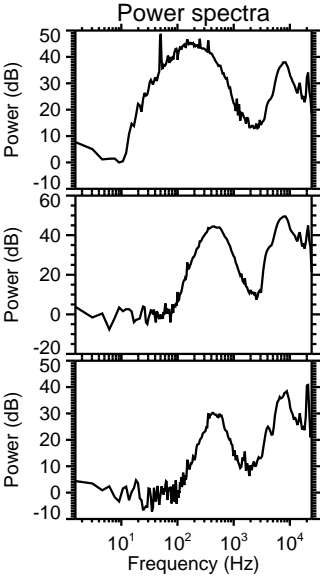
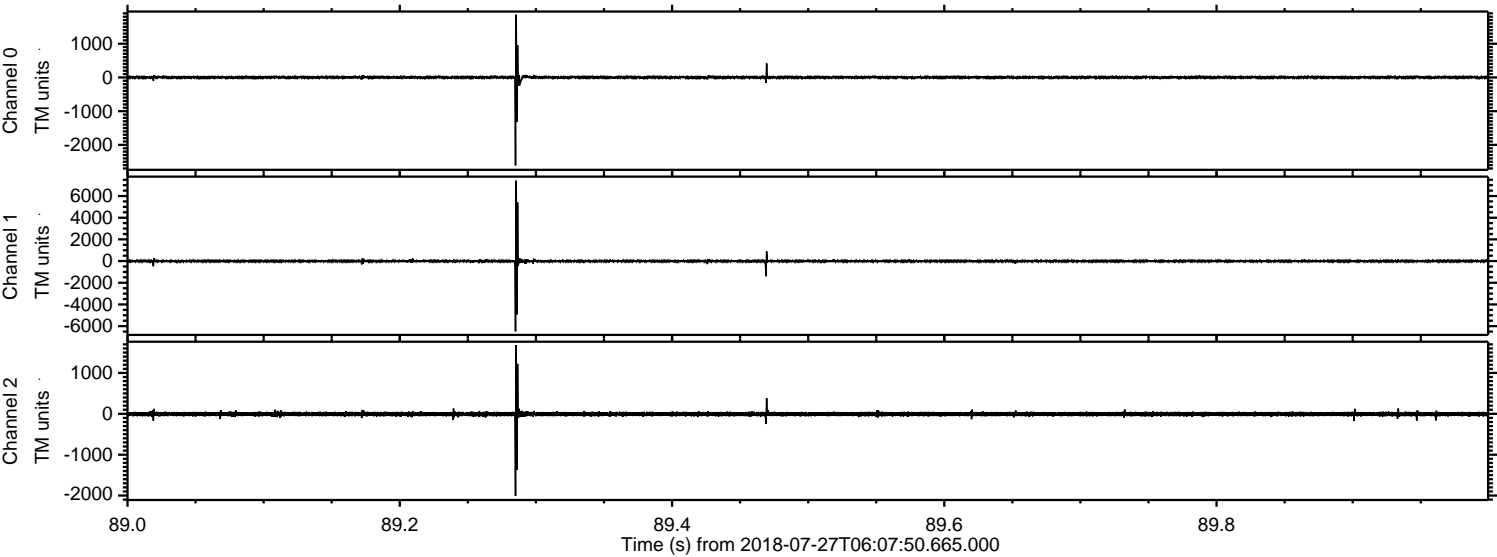
Processed Fri Jul 27 08:15:38 2018 by ELM ver.2012-10-06 from 001__elm20180727_060749__dat00.bin



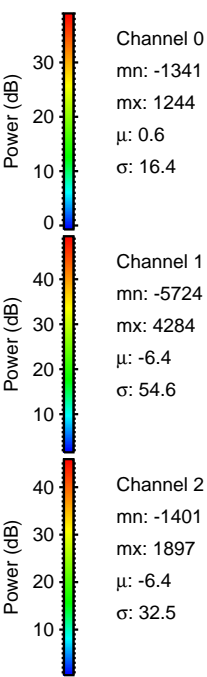
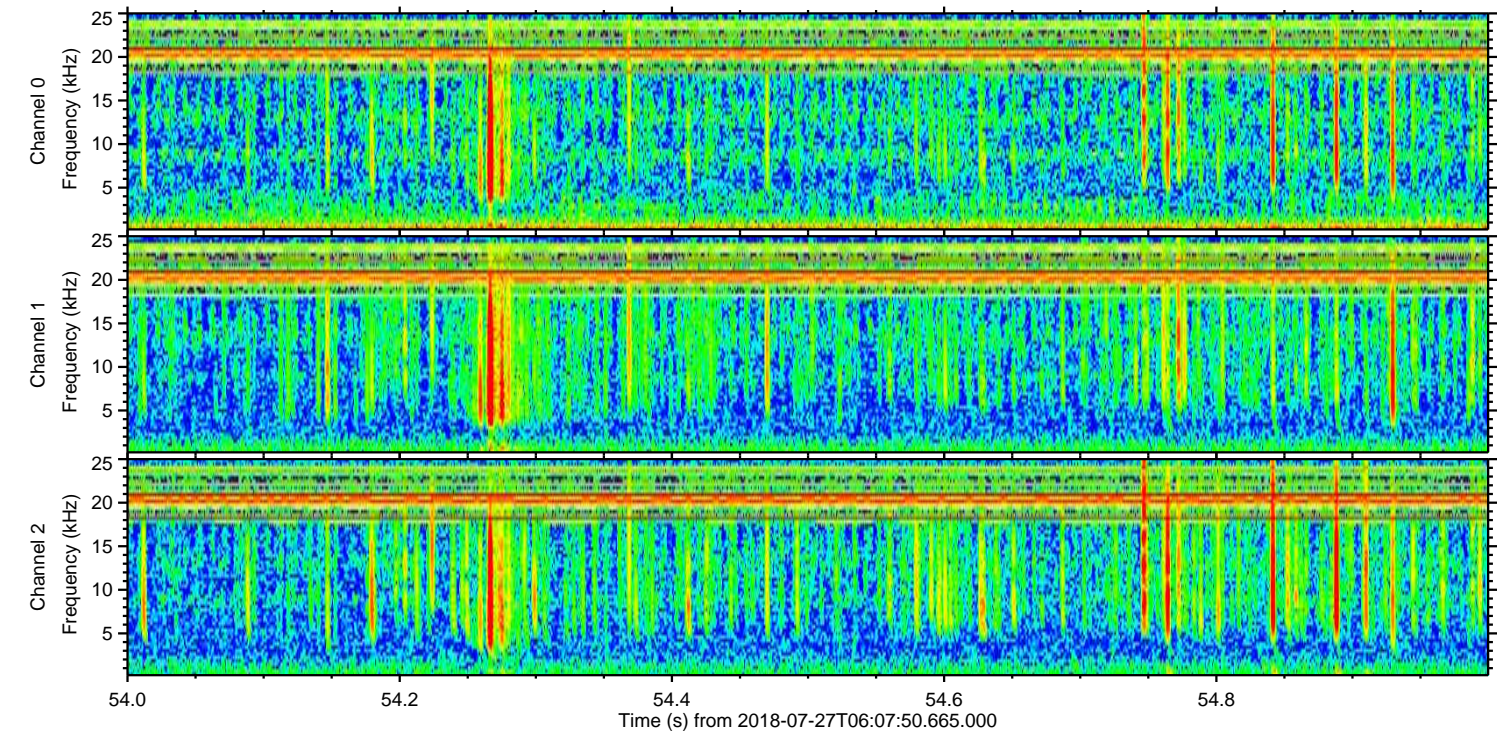
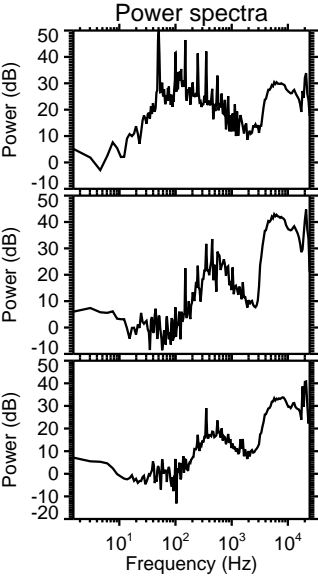
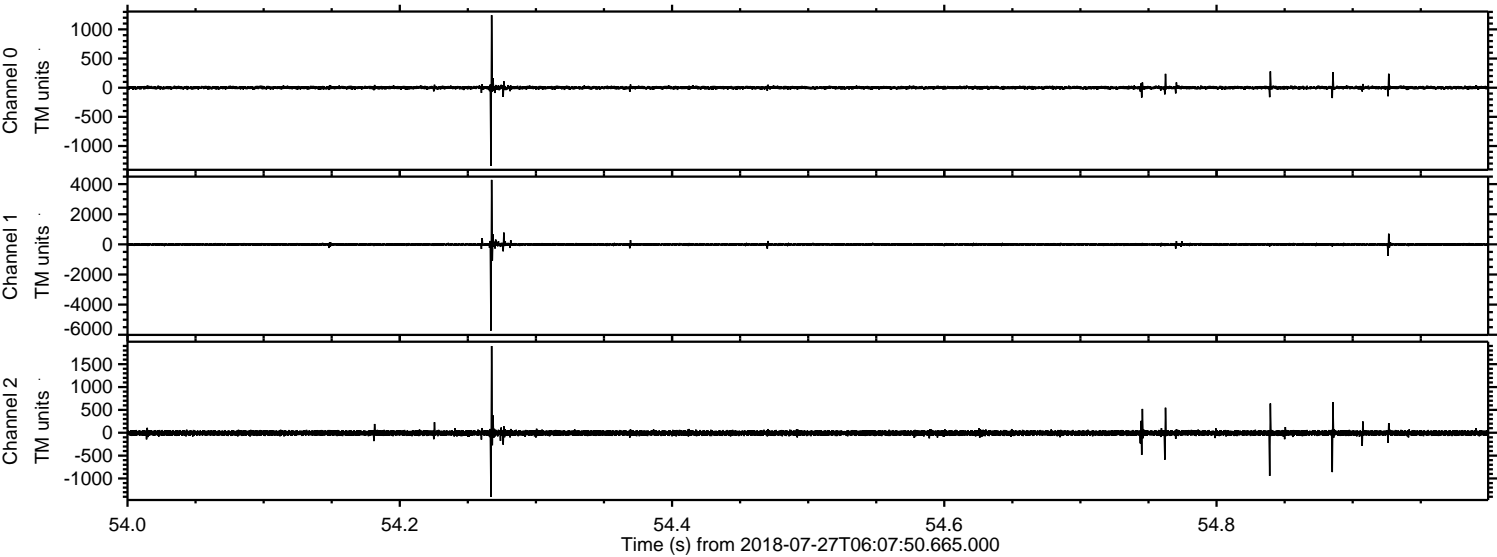
Processed Fri Jul 27 08:15:39 2018 by ELM ver.2012-10-06 from 001__elm20180727_060749__dat00.bin



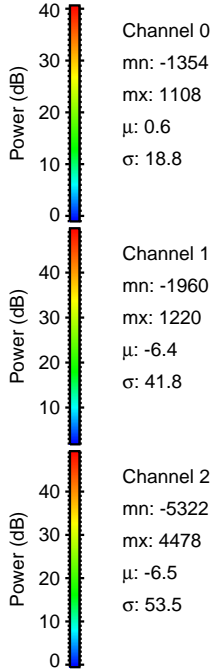
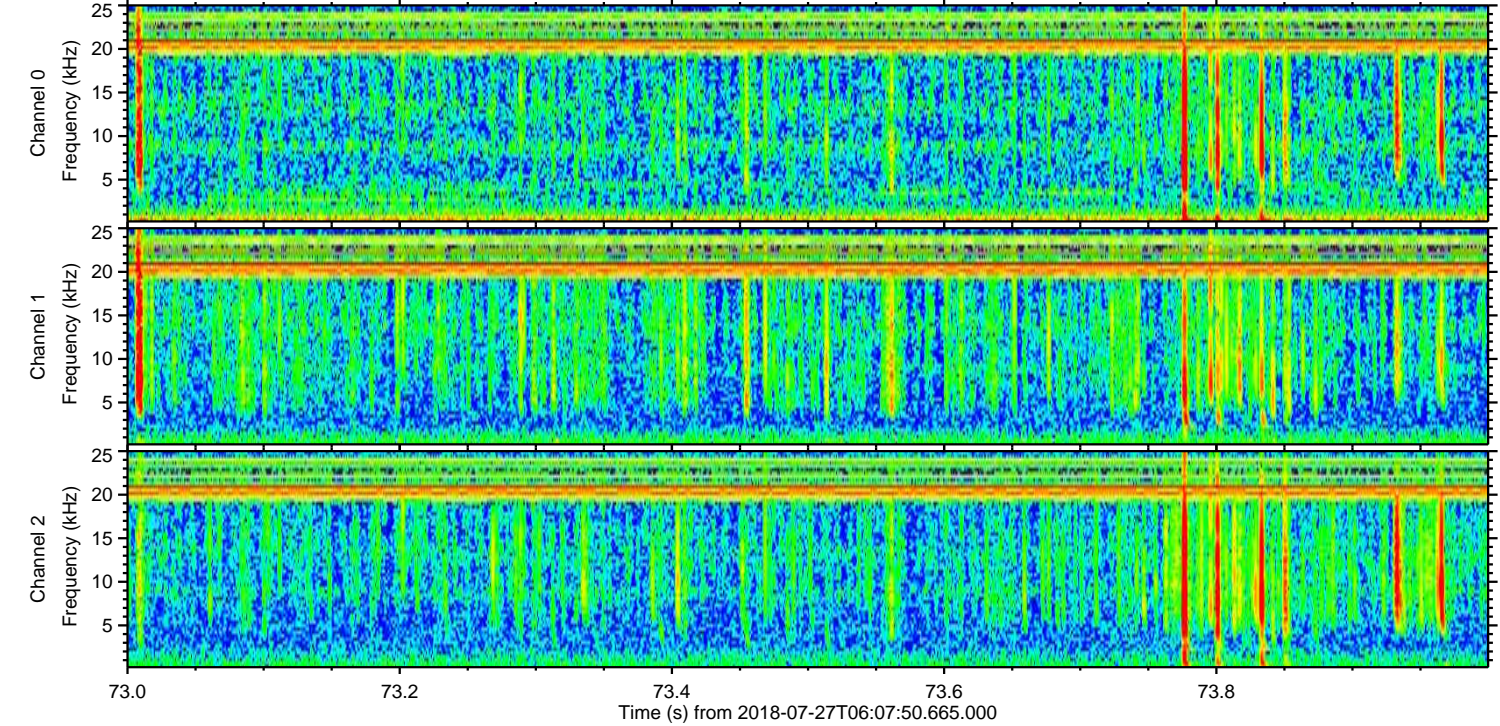
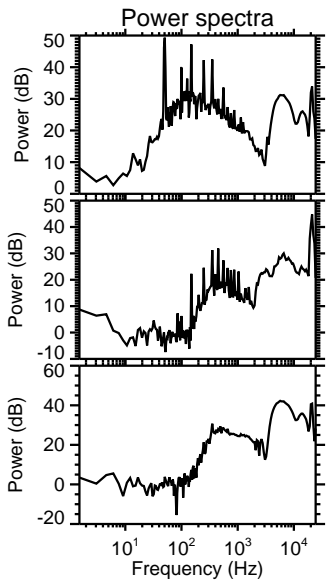
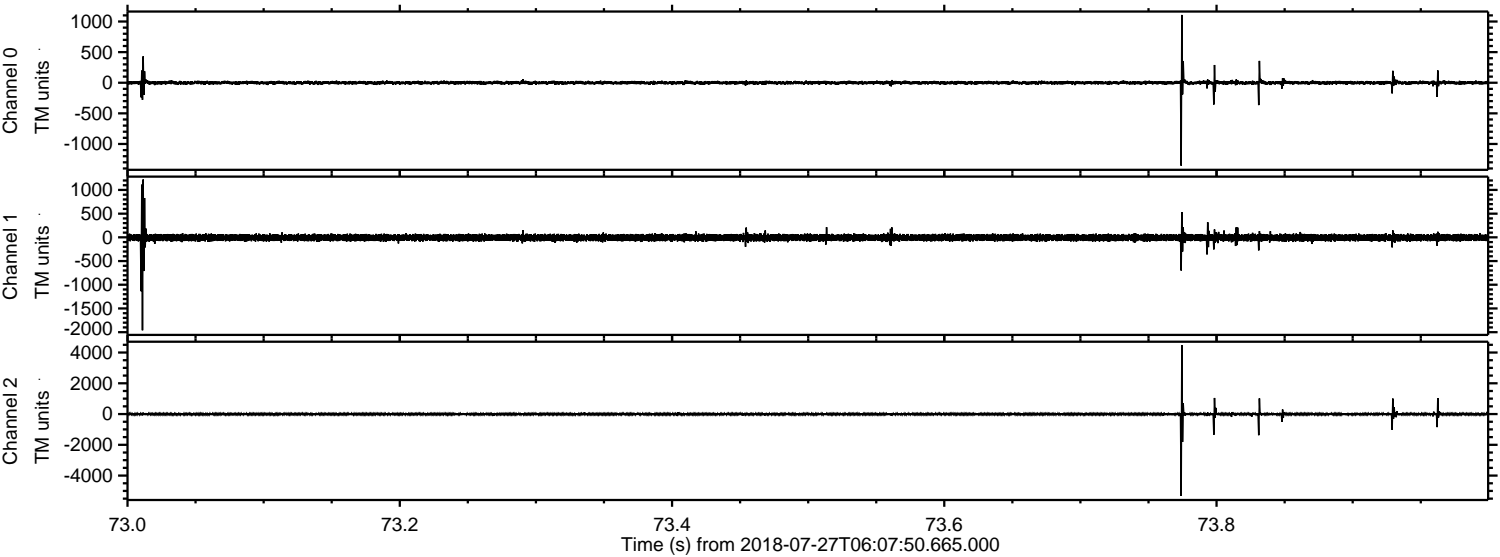
Processed Fri Jul 27 08:15:39 2018 by ELM ver.2012-10-06 from 001__elm20180727_060749__dat00.bin



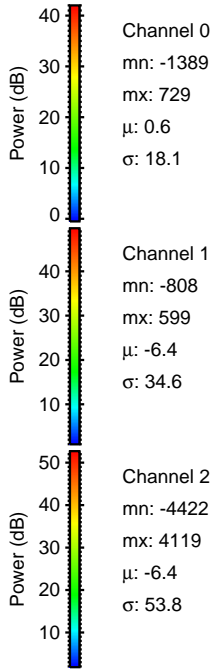
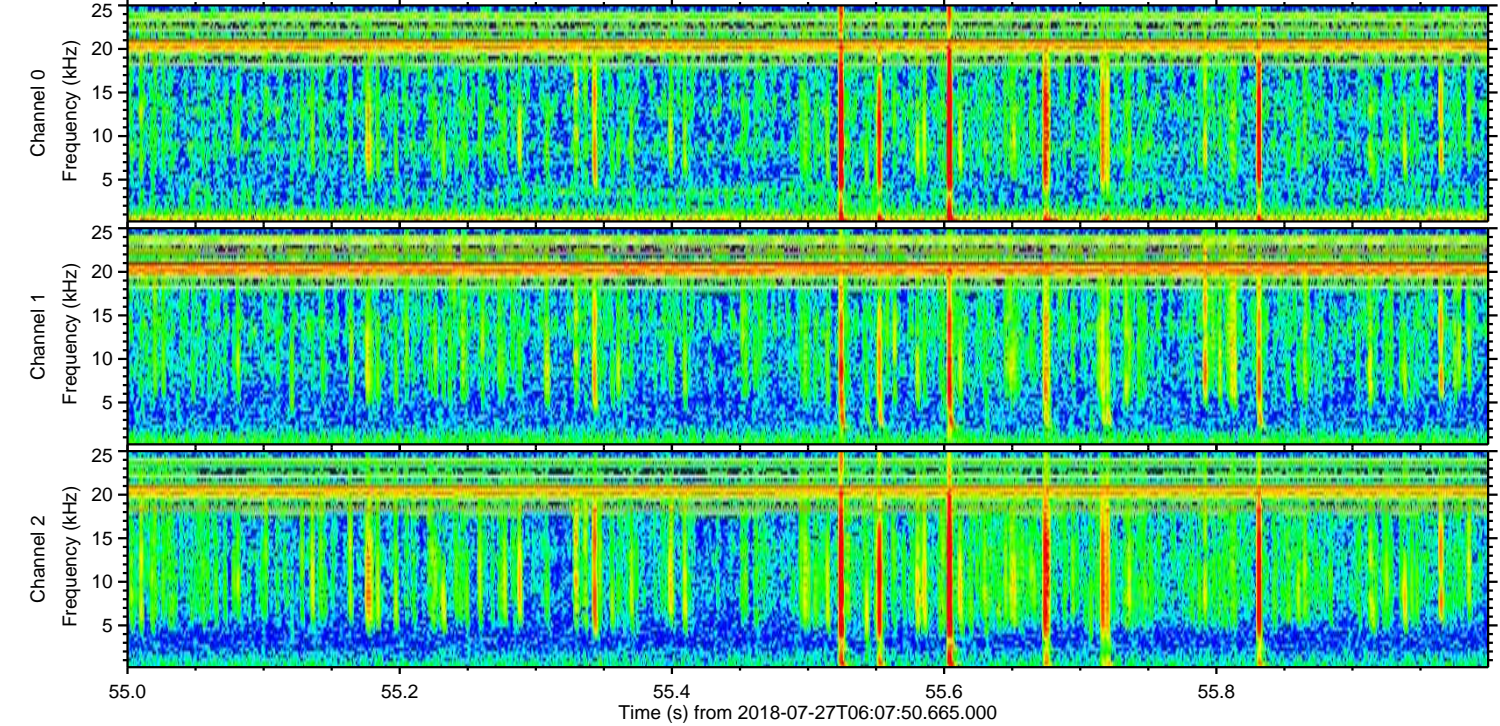
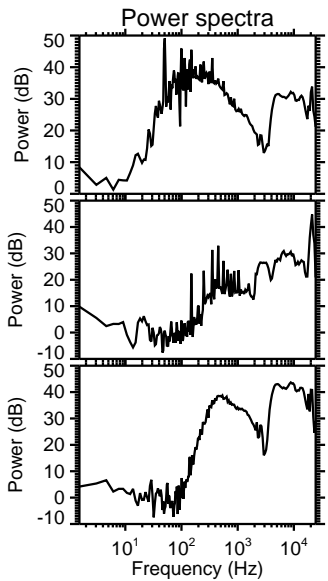
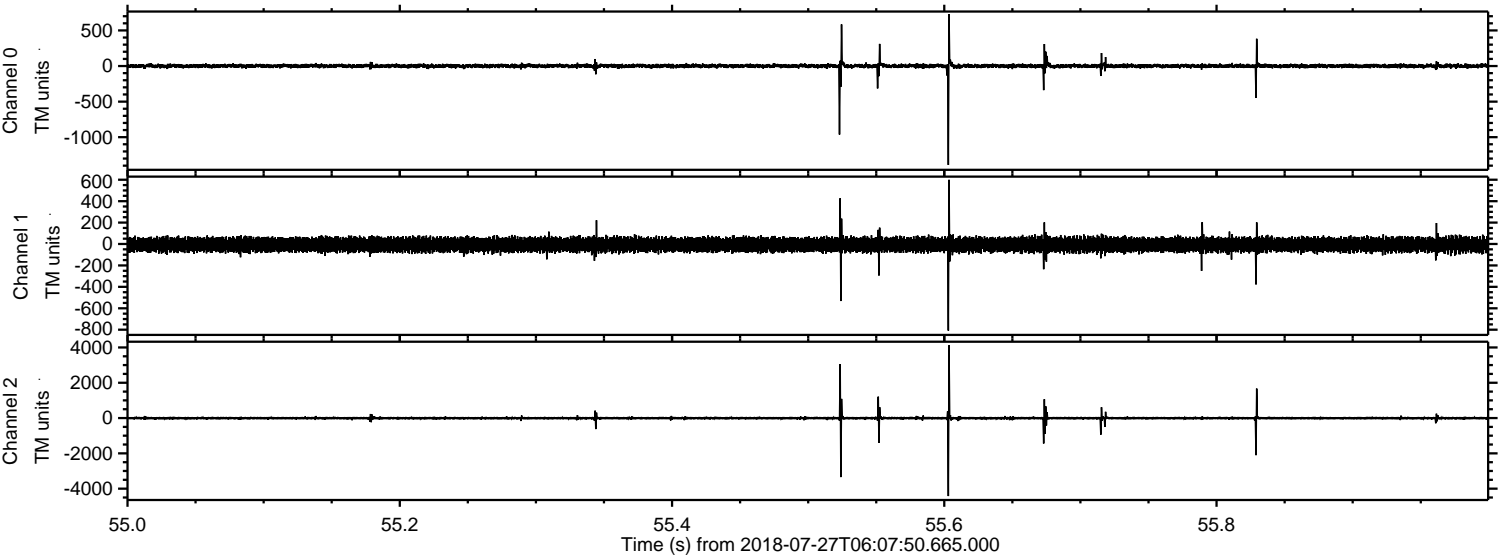
Processed Fri Jul 27 08:15:40 2018 by ELM ver.2012-10-06 from 001__elm20180727_060749__dat00.bin



Processed Fri Jul 27 08:15:40 2018 by ELM ver.2012-10-06 from 001__elm20180727_060749__dat00.bin



Processed Fri Jul 27 08:15:41 2018 by ELM ver.2012-10-06 from 001__elm20180727_060749__dat00.bin



Channel 0
mn: -1389
mx: 729
 μ : 0.6
 σ : 18.1

Channel 1
mn: -808
mx: 599
 μ : -6.4
 σ : 34.6

Channel 2
mn: -4422
mx: 4119
 μ : -6.4
 σ : 53.8

