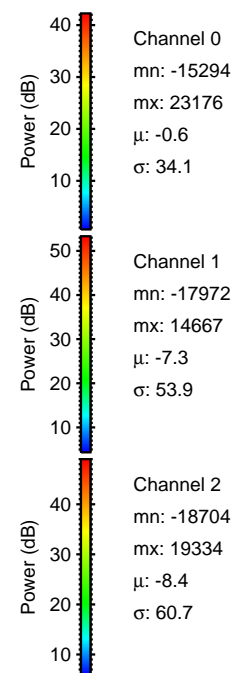
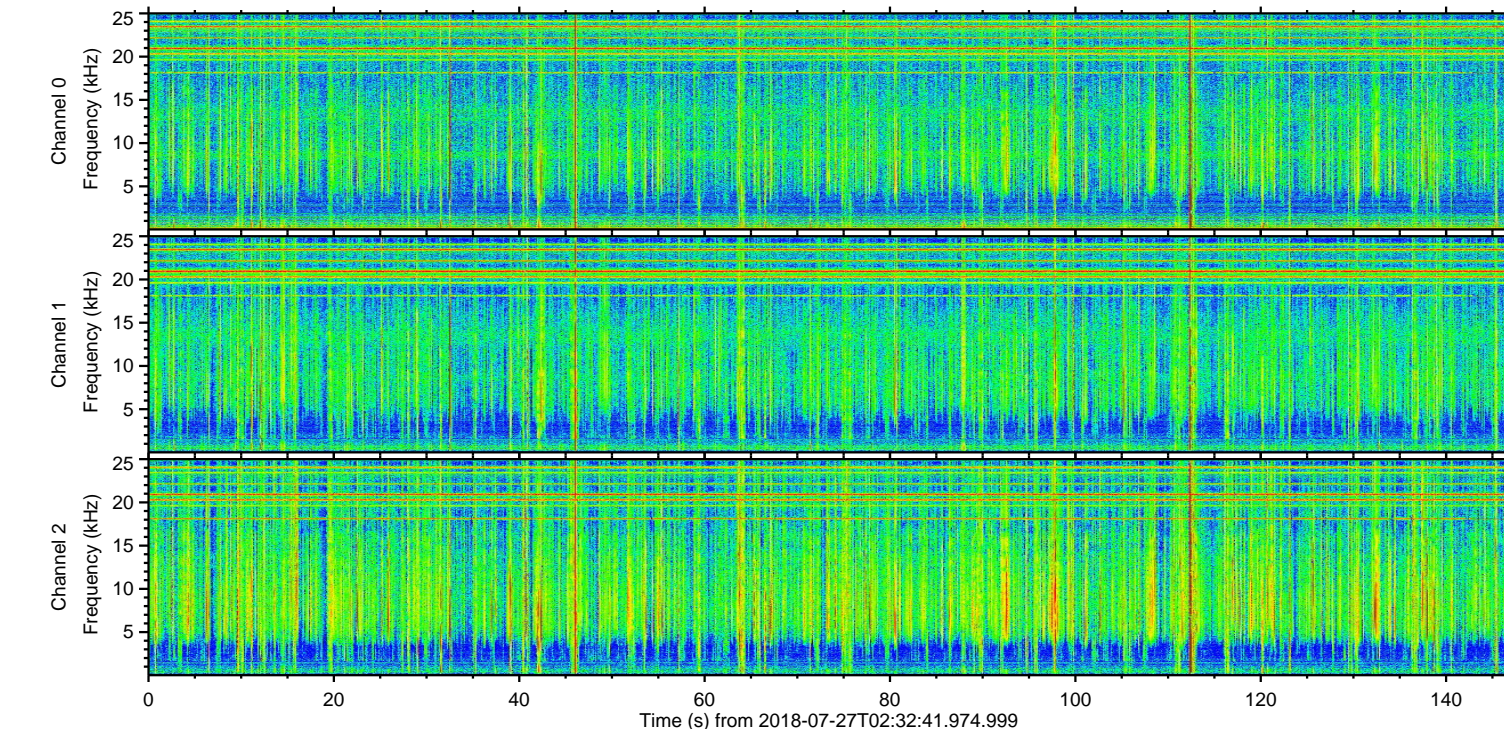
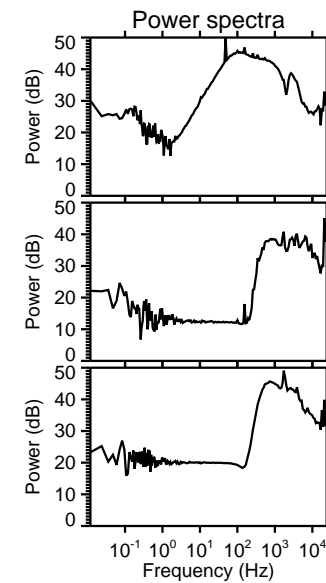
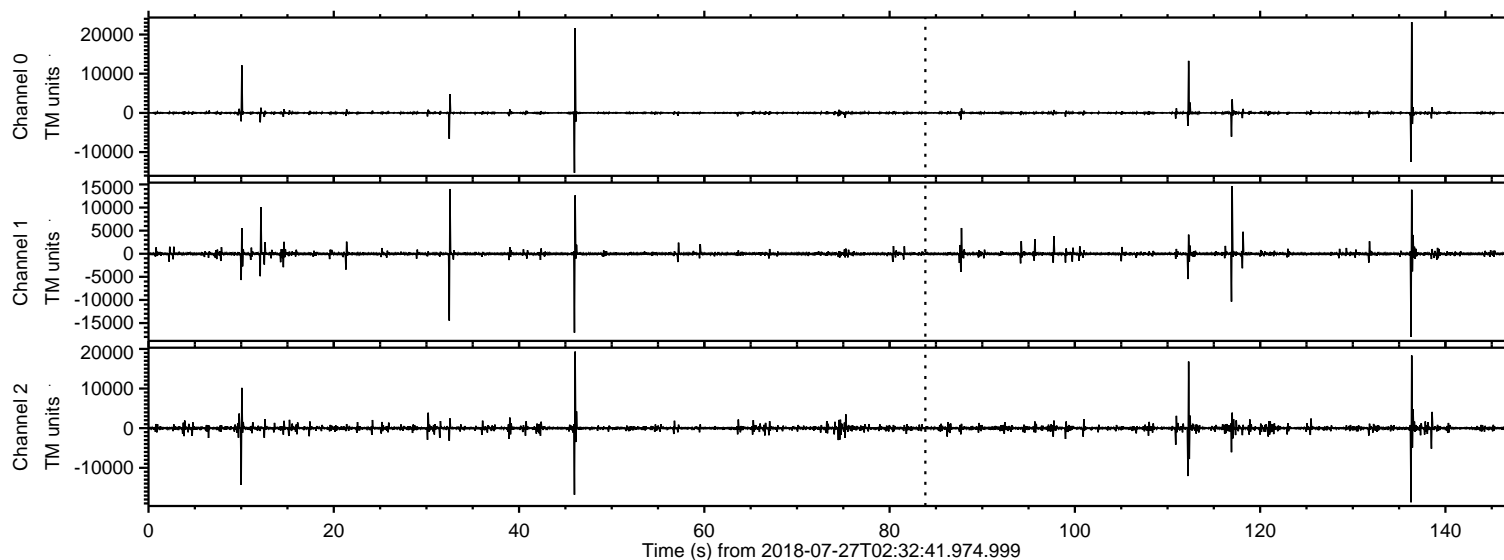


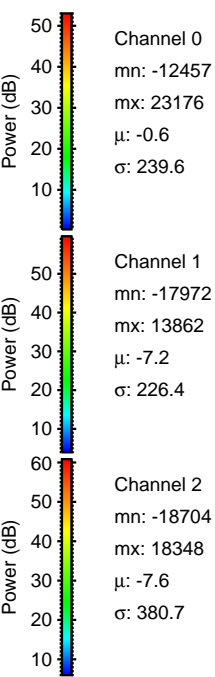
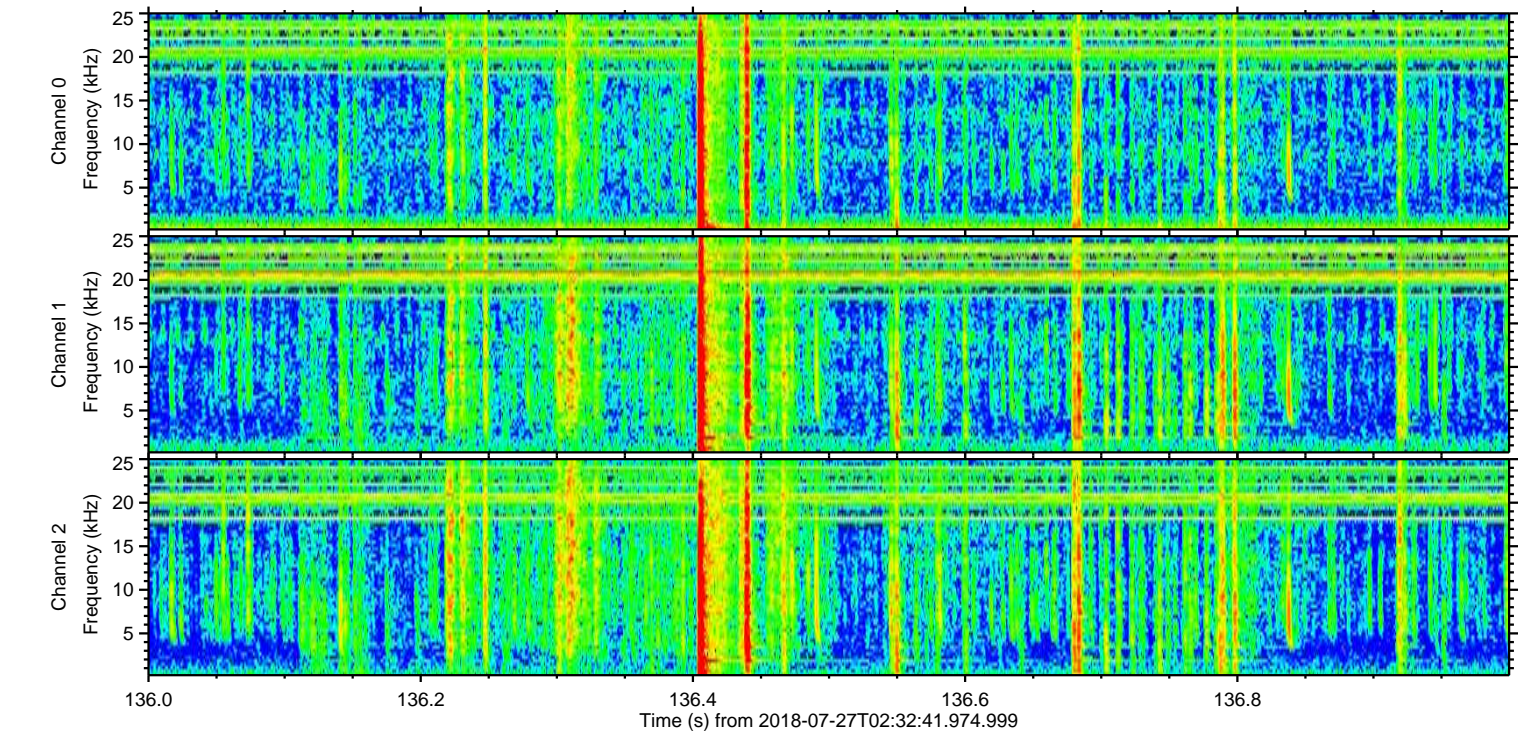
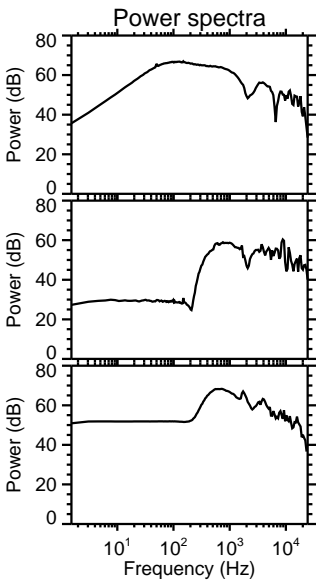
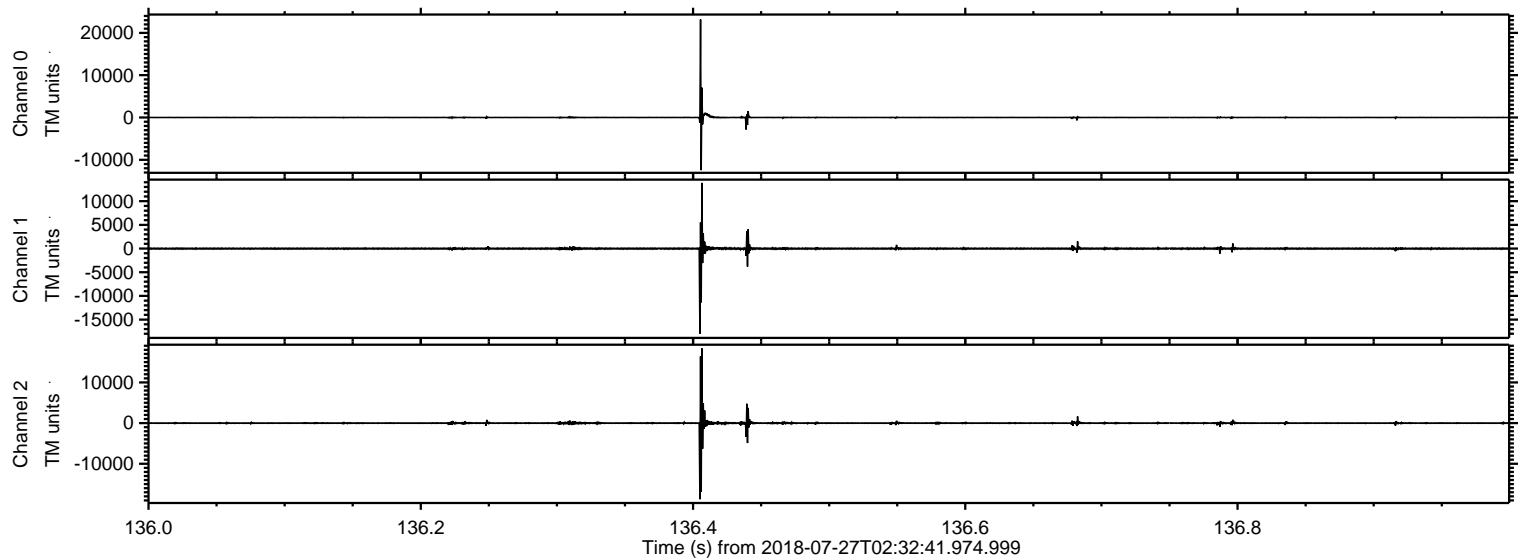
ELMAVAN 3D WAVEFORMS (Measured data sampled at 50 kHz) 50999 packets of 144 samples from 2018-07-27T02:32:41.974.999.

Processed Fri Jul 27 04:40:32 2018 by ELM ver.2012-10-06 from 001__elm20180727_023240__dat00.bin

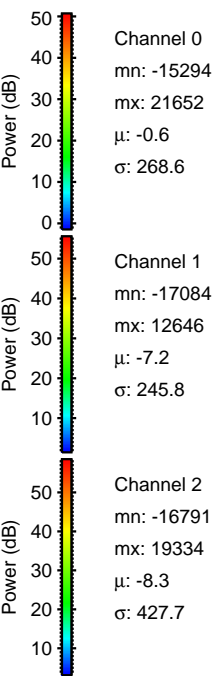
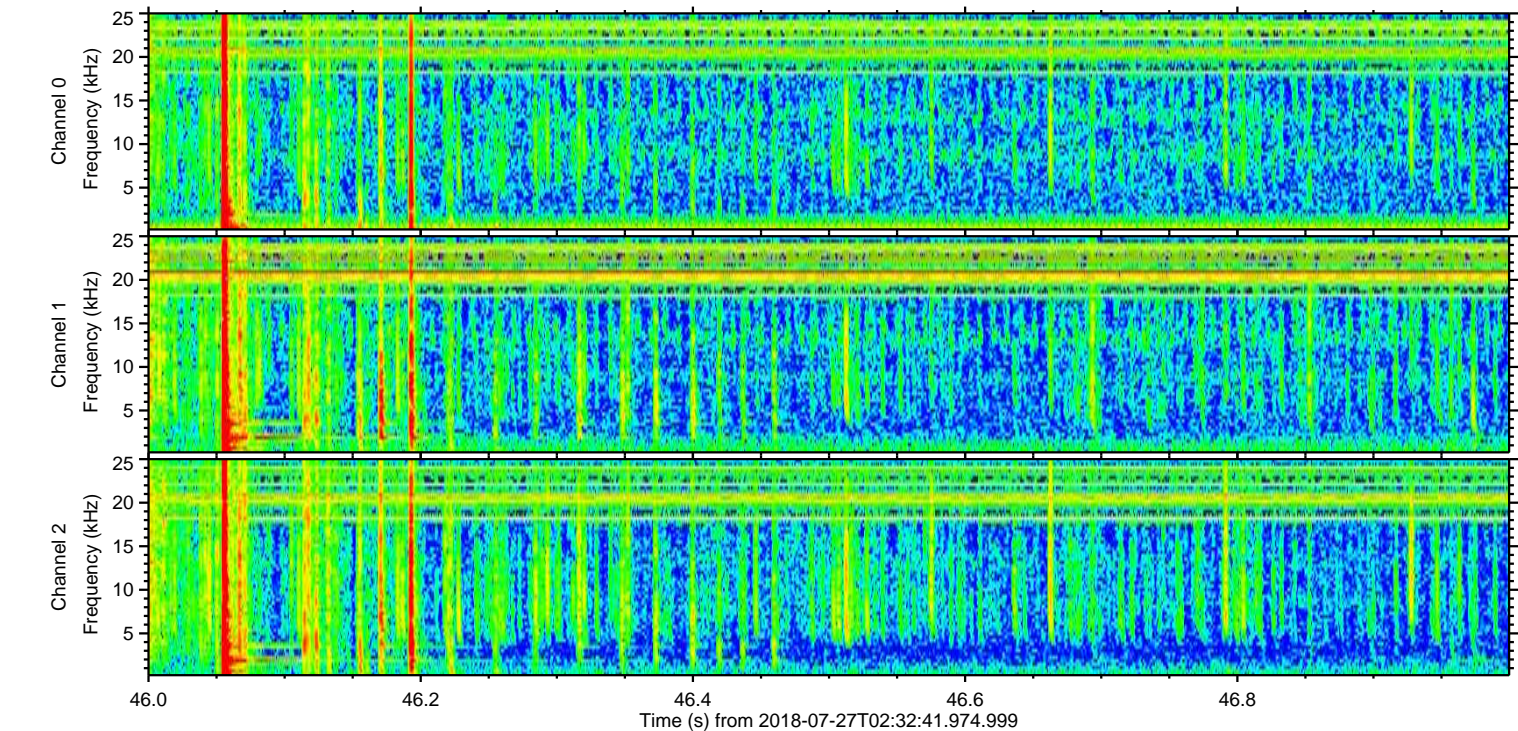
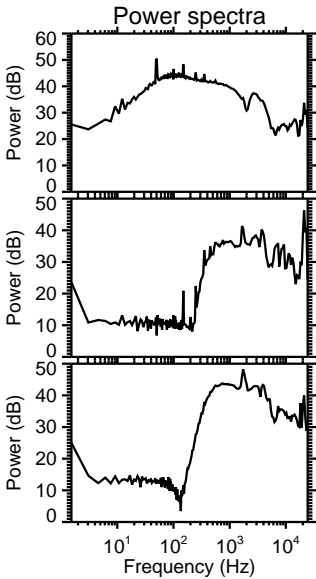
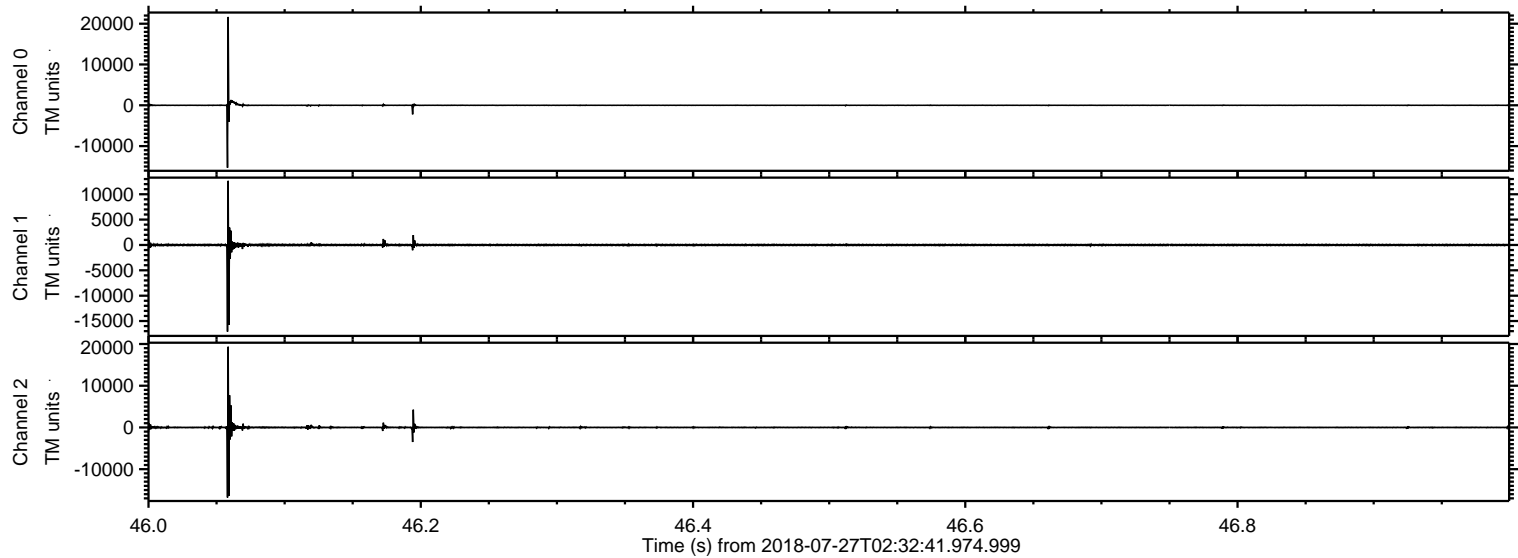


ELMAVAN 3D WAVEFORMS (Measured data sampled at 50 kHz) 50999 packets of 144 samples from 2018-07-27T02:32:41.974.999. Part 137/147

Processed Fri Jul 27 04:40:38 2018 by ELM ver.2012-10-06 from 001__elm20180727_023240__dat00.bin

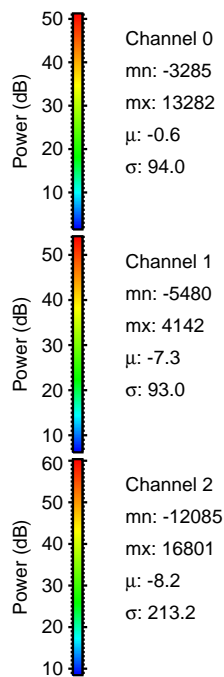
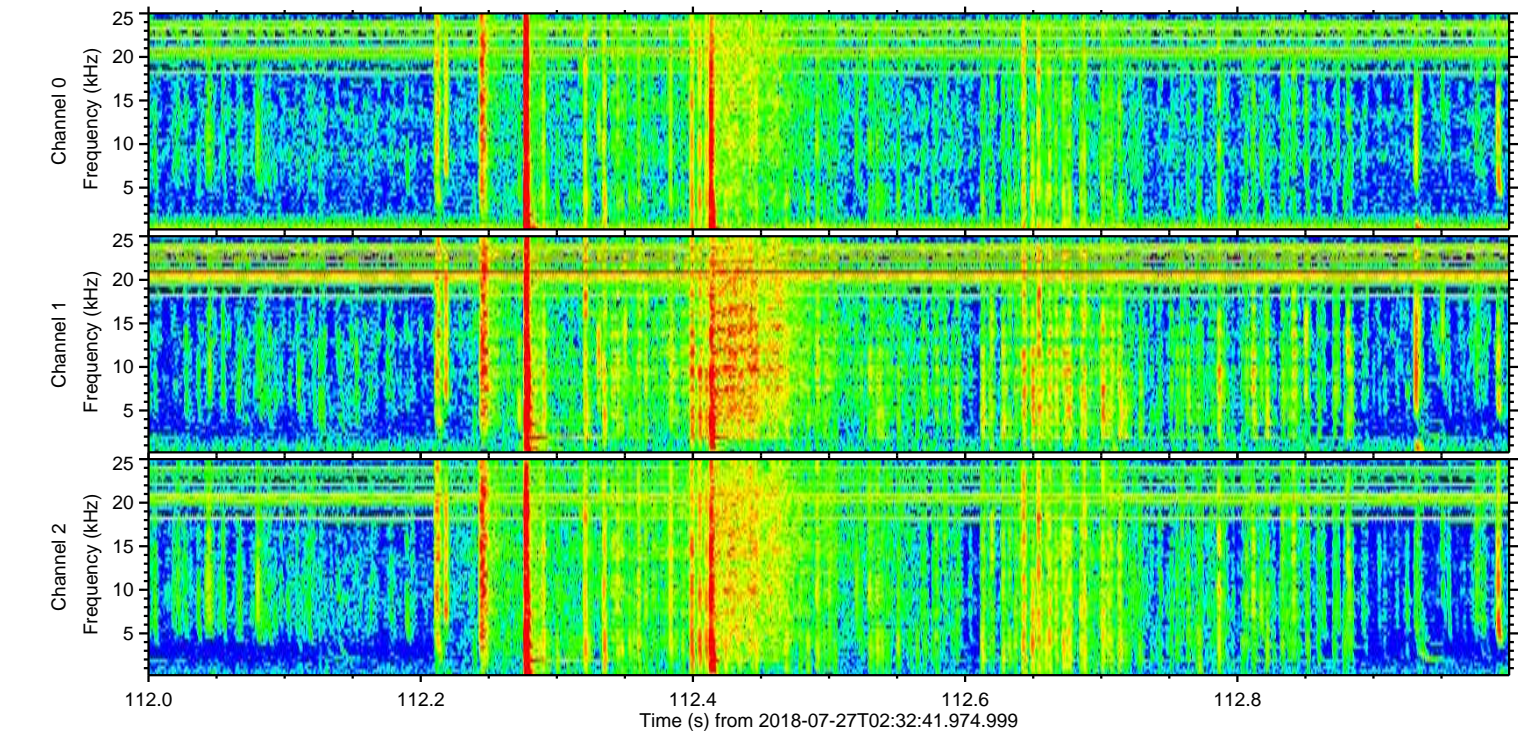
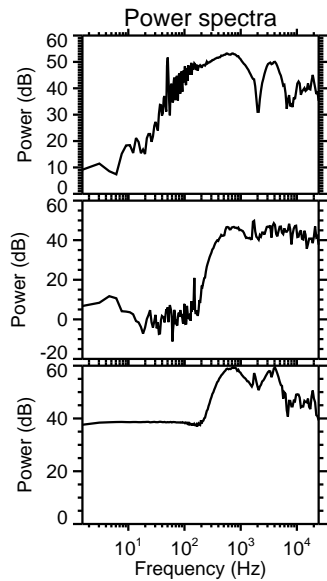
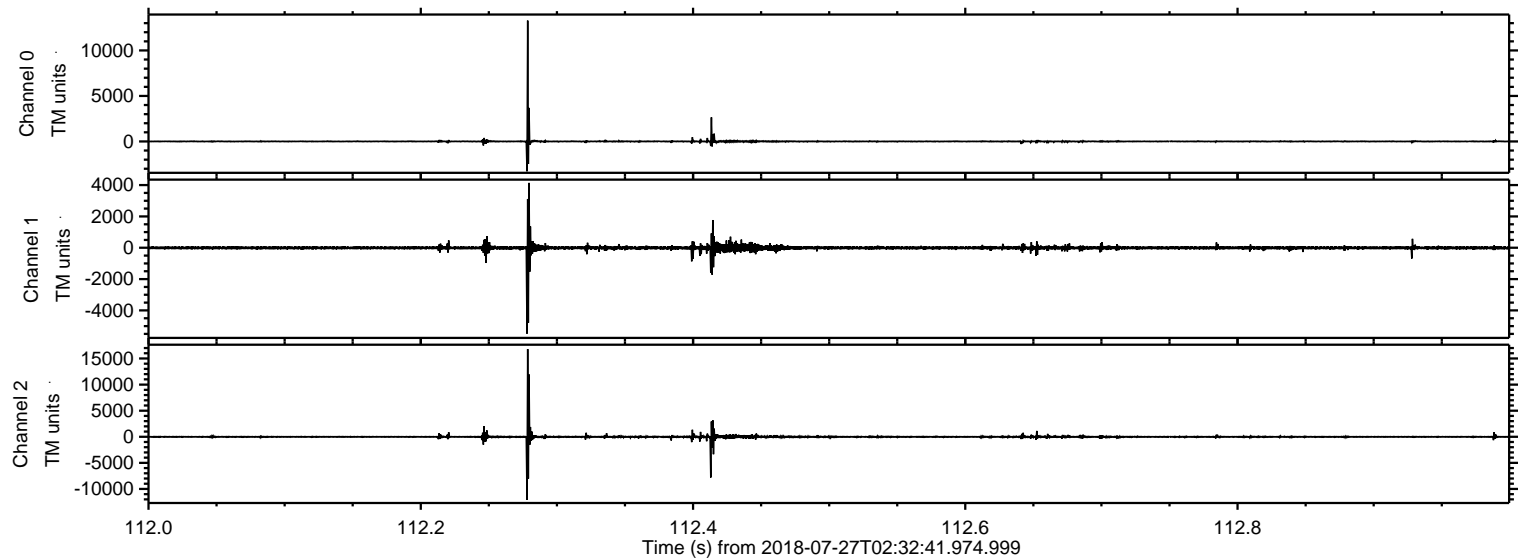


Processed Fri Jul 27 04:40:39 2018 by ELM ver.2012-10-06 from 001__elm20180727_023240__dat00.bin



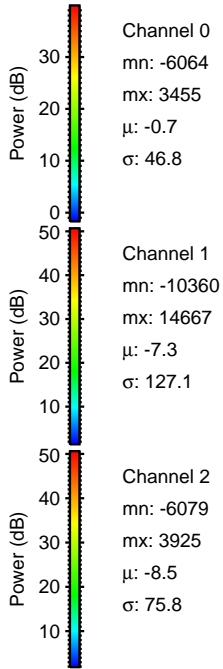
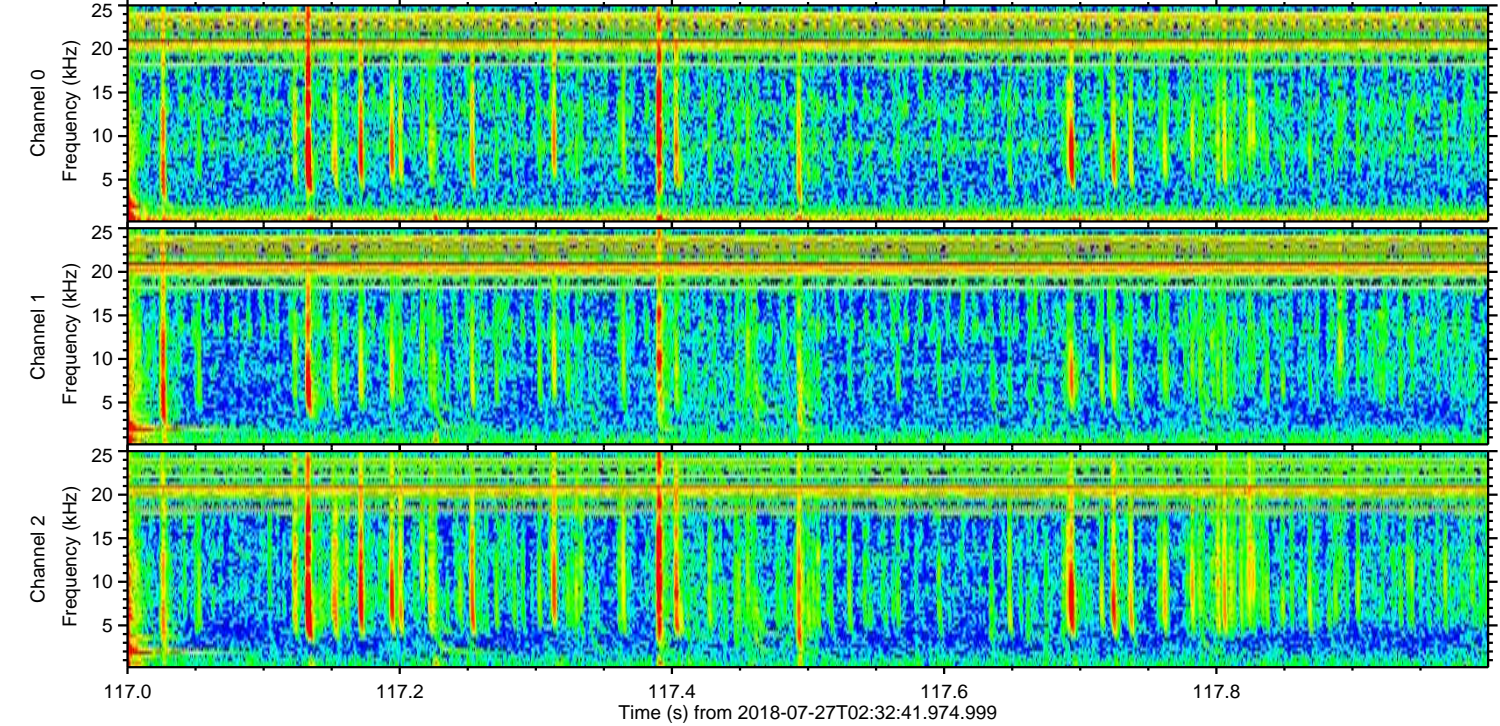
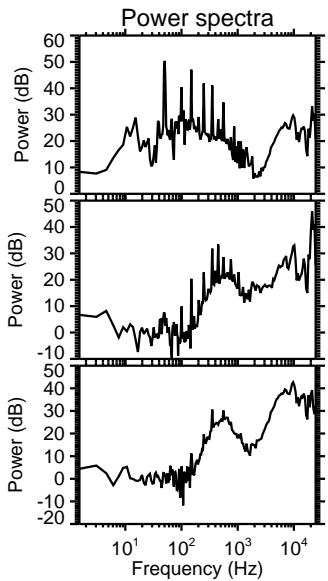
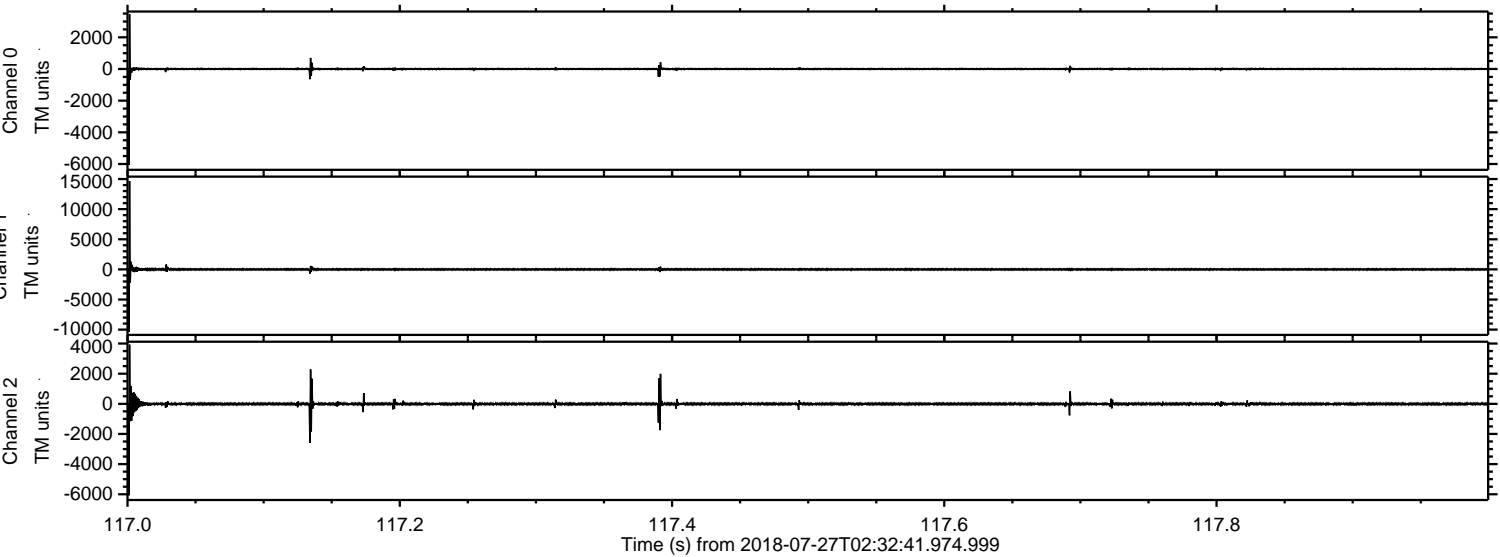
ELMAVAN 3D WAVEFORMS (Measured data sampled at 50 kHz) 50999 packets of 144 samples from 2018-07-27T02:32:41.974.999. Part 113/147

Processed Fri Jul 27 04:40:40 2018 by ELM ver.2012-10-06 from 001__elm20180727_023240__dat00.bin

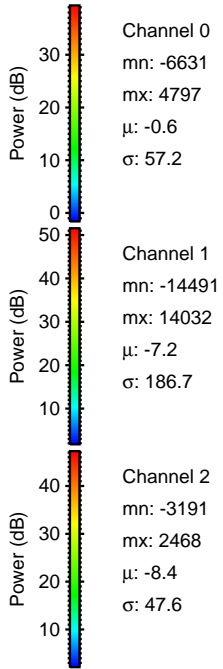
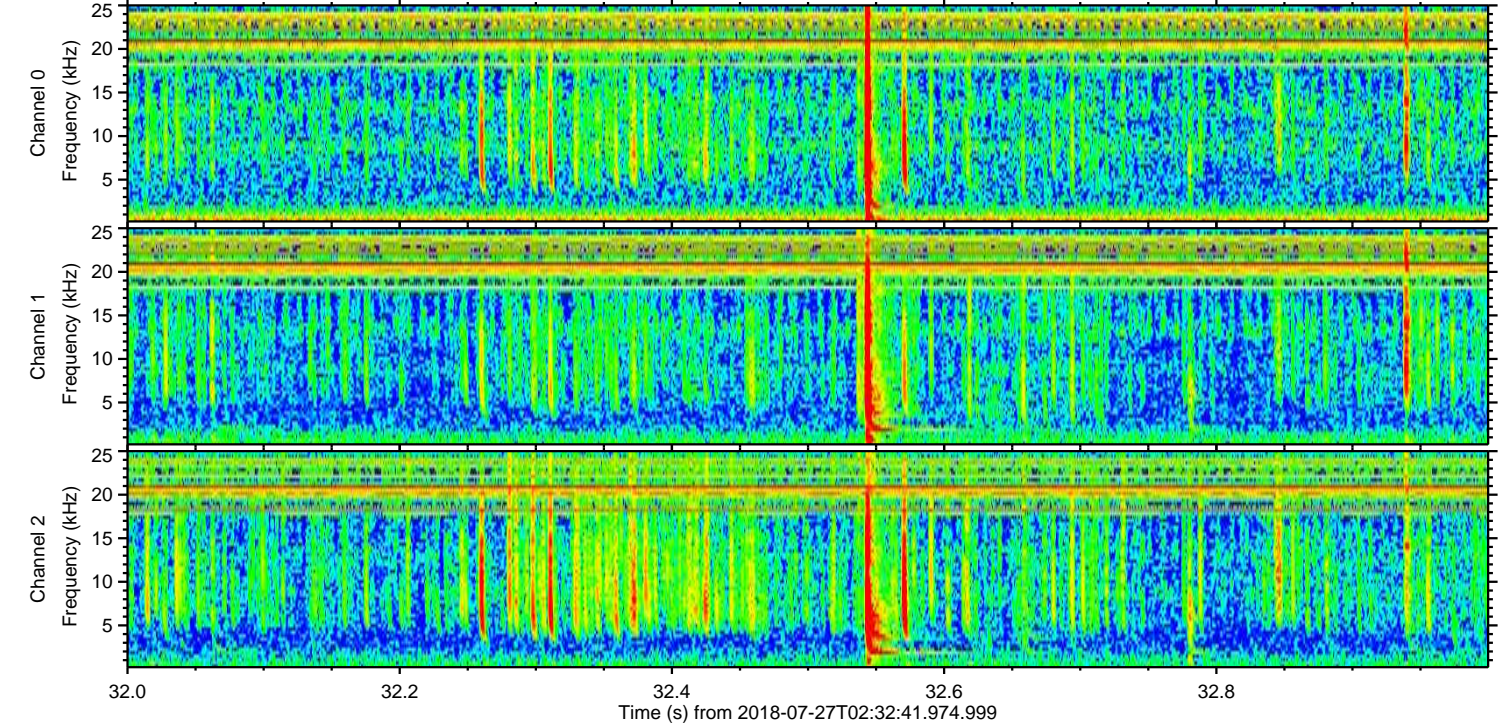
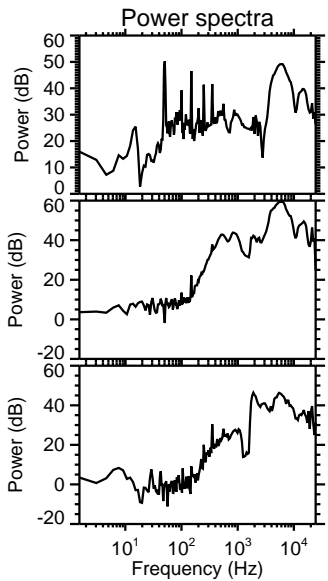
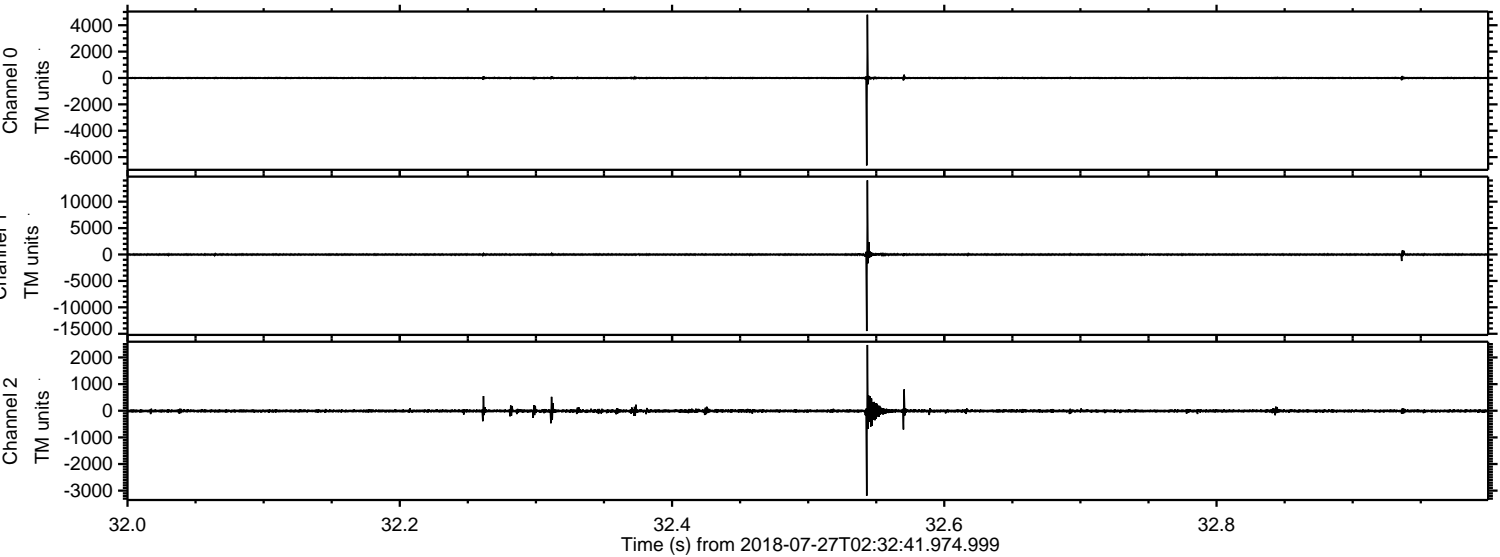


ELMAVAN 3D WAVEFORMS (Measured data sampled at 50 kHz) 50999 packets of 144 samples from 2018-07-27T02:32:41.974.999. Part 118/147

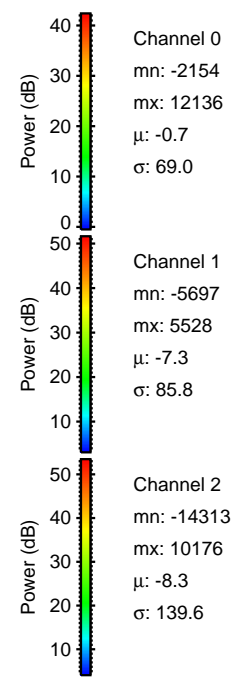
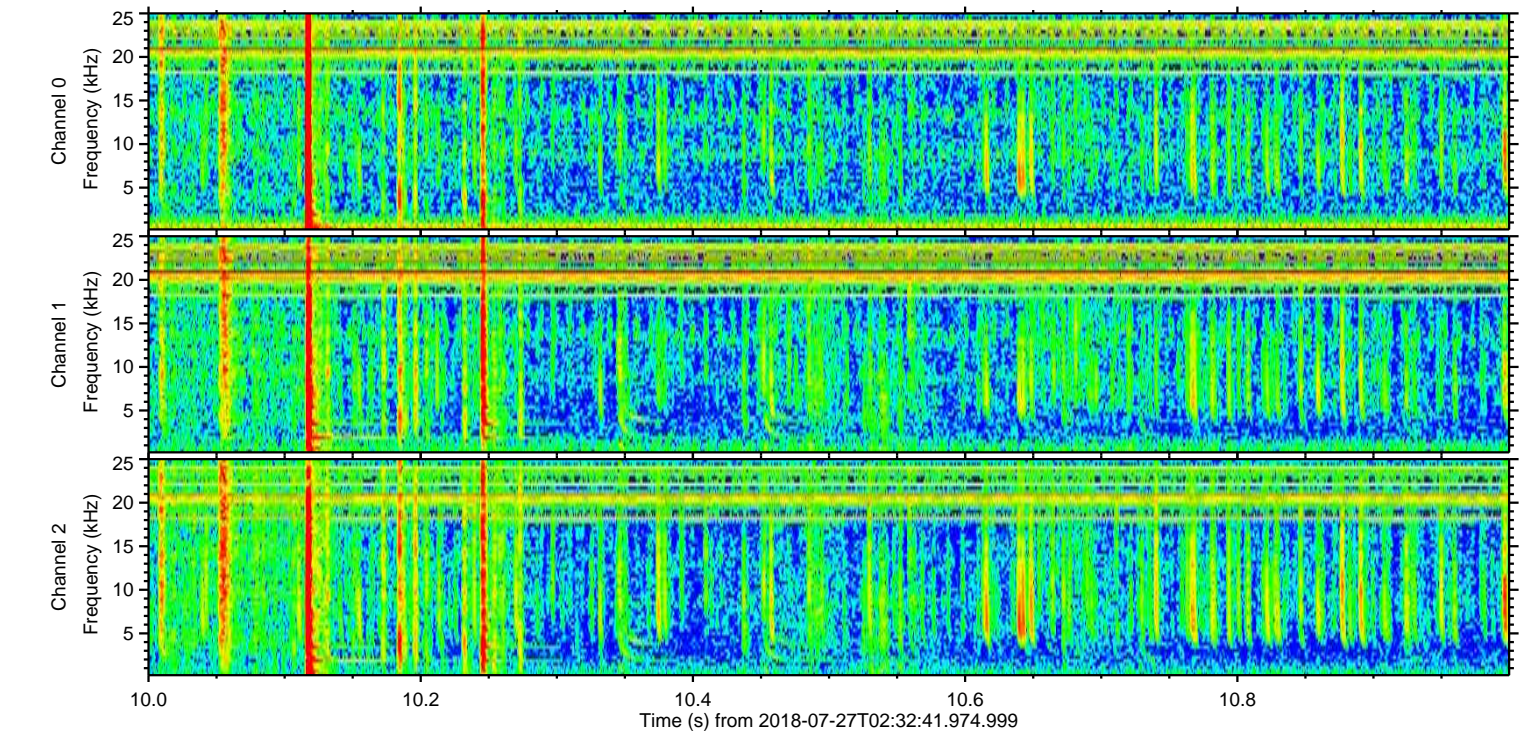
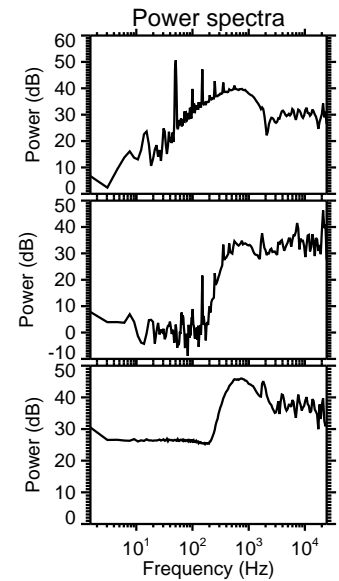
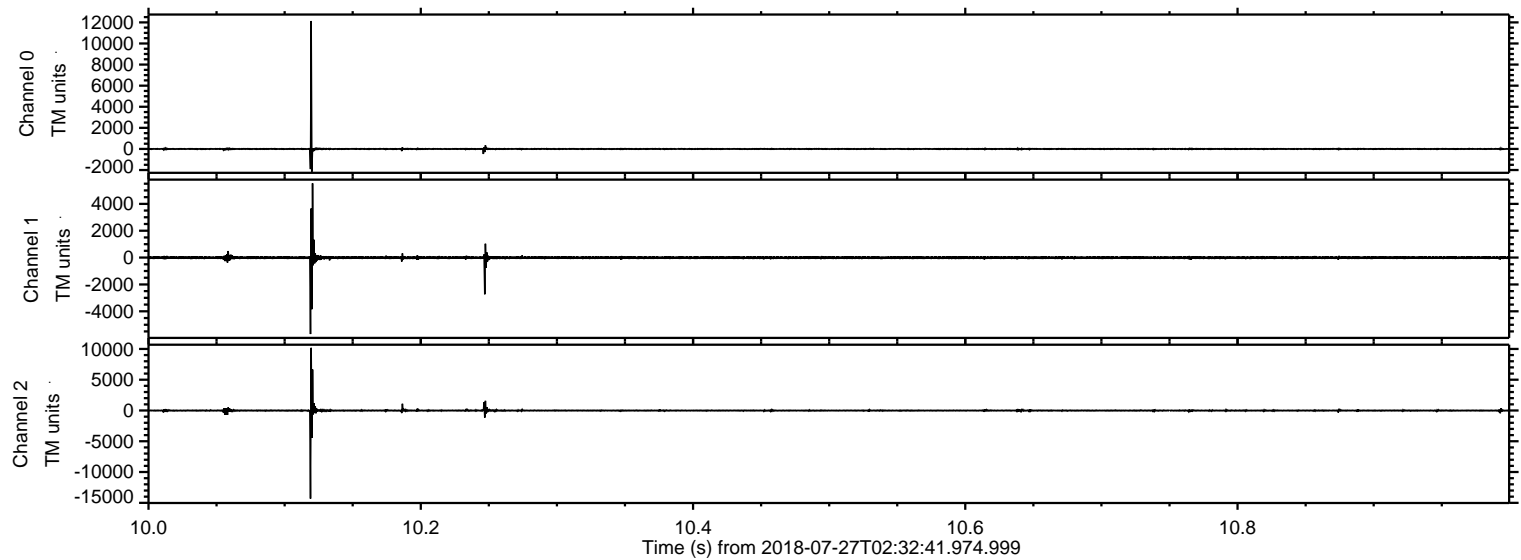
Processed Fri Jul 27 04:40:40 2018 by ELM ver.2012-10-06 from 001__elm20180727_023240__dat00.bin



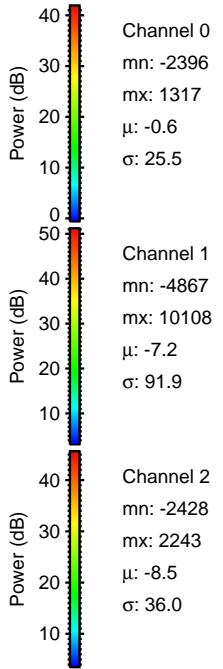
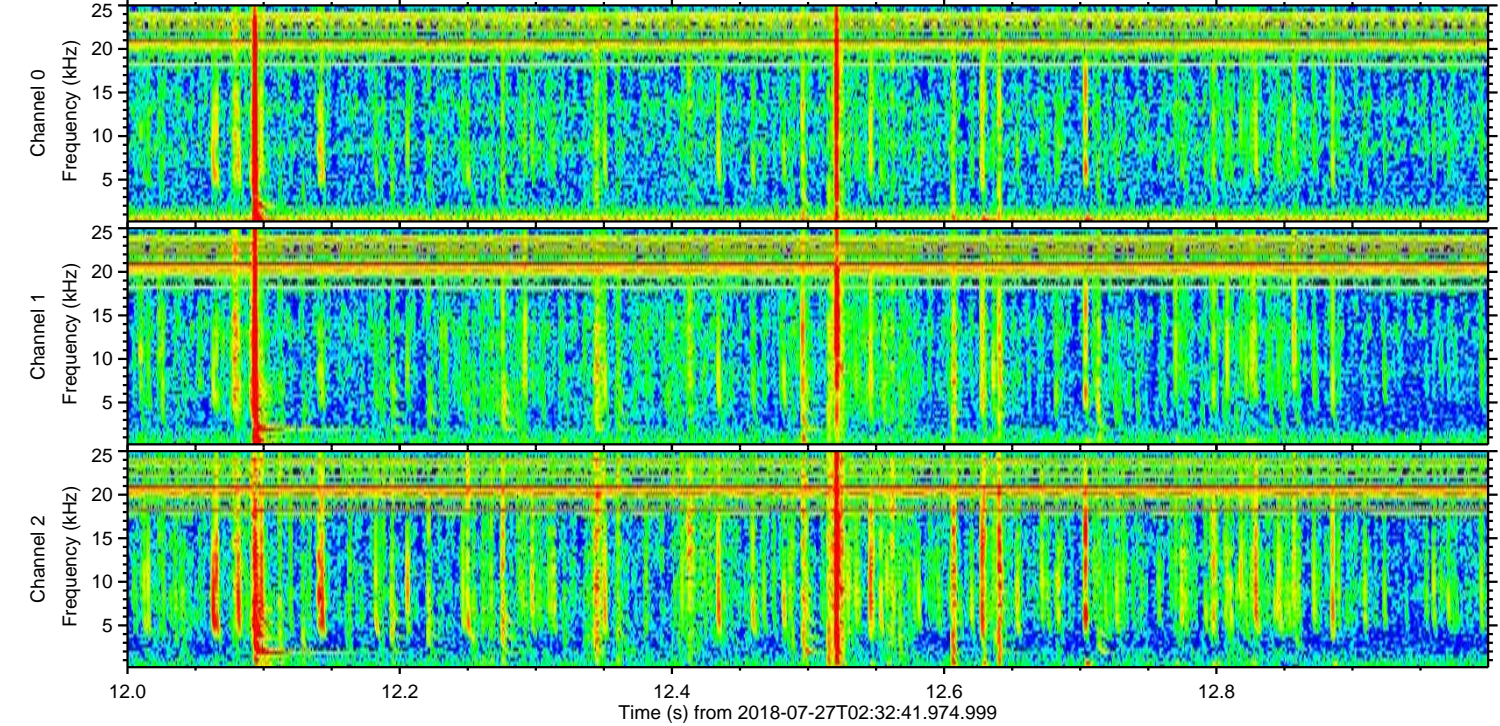
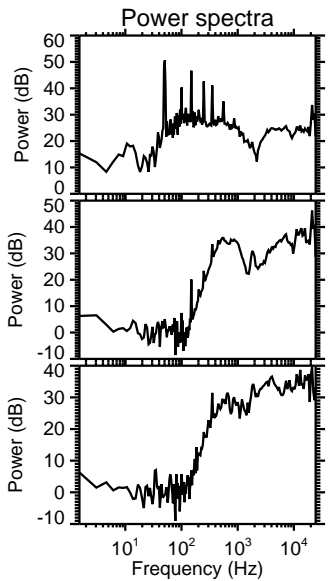
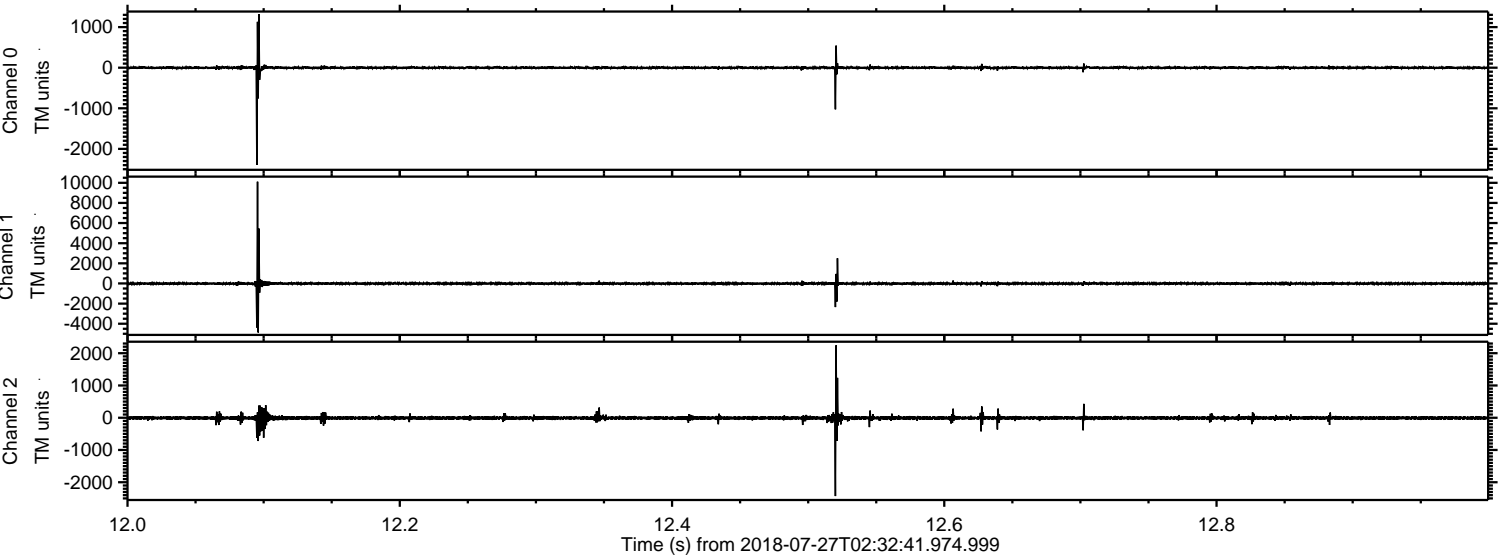
Processed Fri Jul 27 04:40:41 2018 by ELM ver.2012-10-06 from 001__elm20180727_023240__dat00.bin



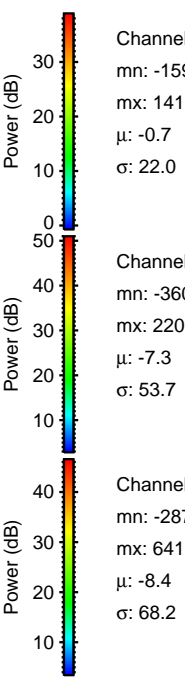
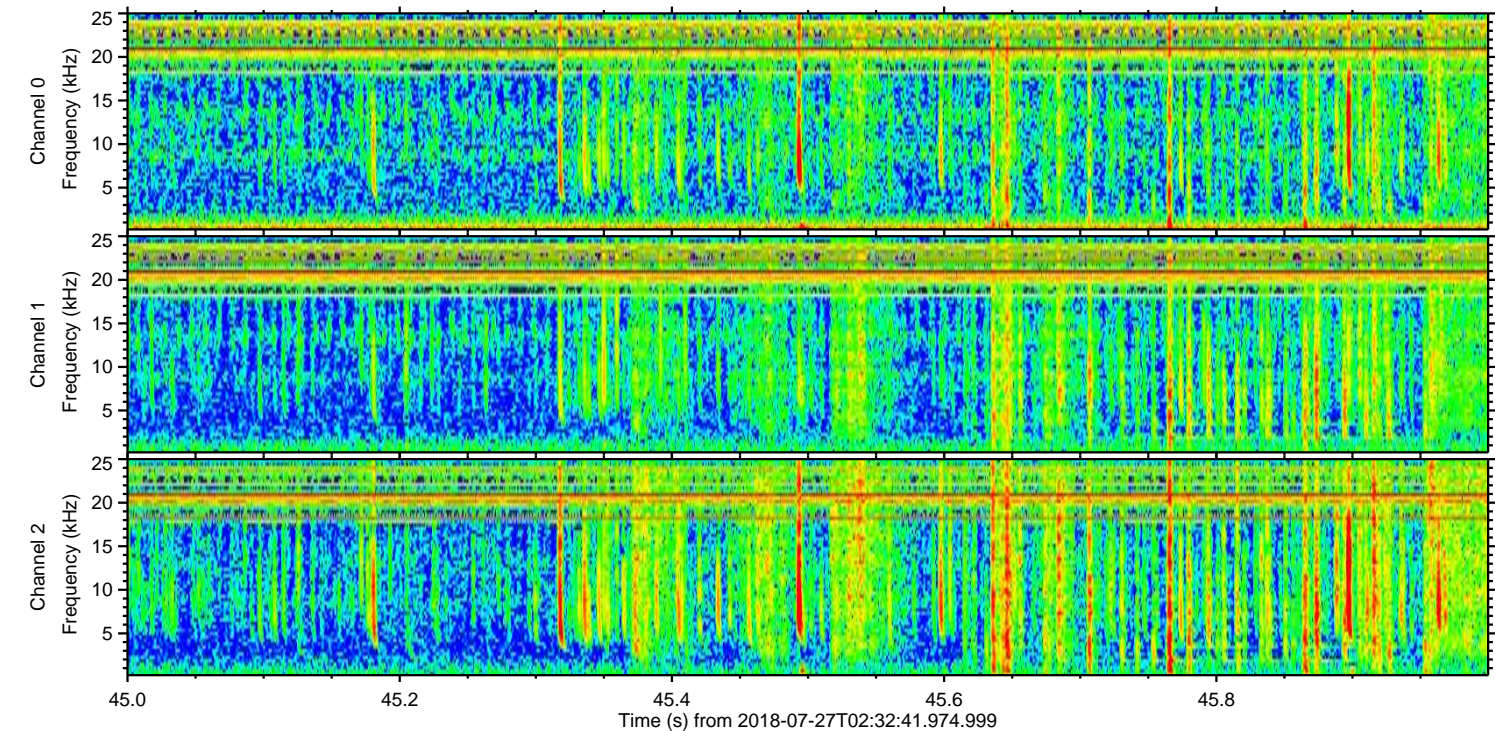
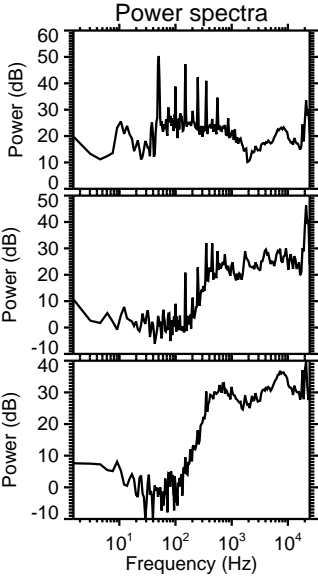
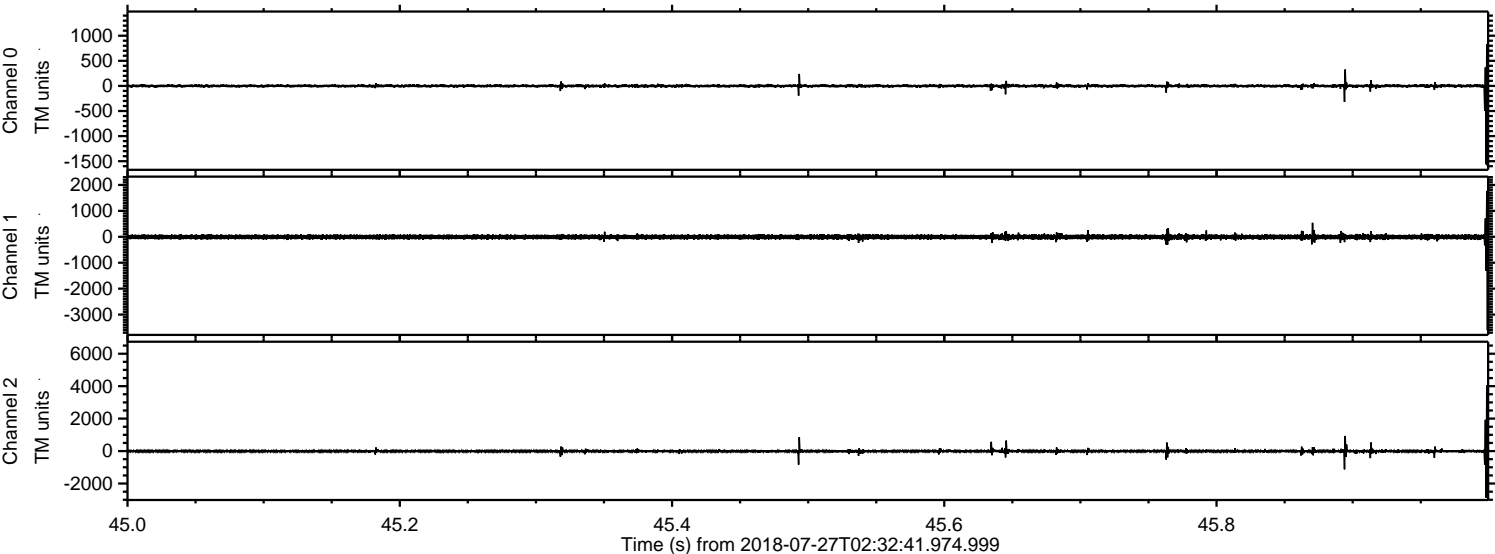
Processed Fri Jul 27 04:40:42 2018 by ELM ver.2012-10-06 from 001__elm20180727_023240__dat00.bin



Processed Fri Jul 27 04:40:42 2018 by ELM ver.2012-10-06 from 001__elm20180727_023240__dat00.bin



Processed Fri Jul 27 04:40:43 2018 by ELM ver.2012-10-06 from 001__elm20180727_023240__dat00.bin



Channel 0
mn: -1592
mx: 1411
 μ : -0.7
 σ : 22.0

Channel 1
mn: -3603
mx: 2209
 μ : -7.3
 σ : 53.7

Channel 2
mn: -2871
mx: 6418
 μ : -8.4
 σ : 68.2

Processed Fri Jul 27 04:40:43 2018 by ELM ver.2012-10-06 from 001__elm20180727_023240__dat00.bin

