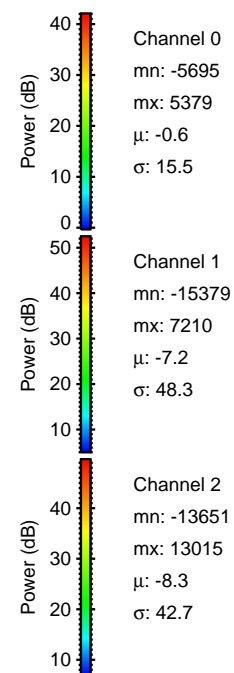
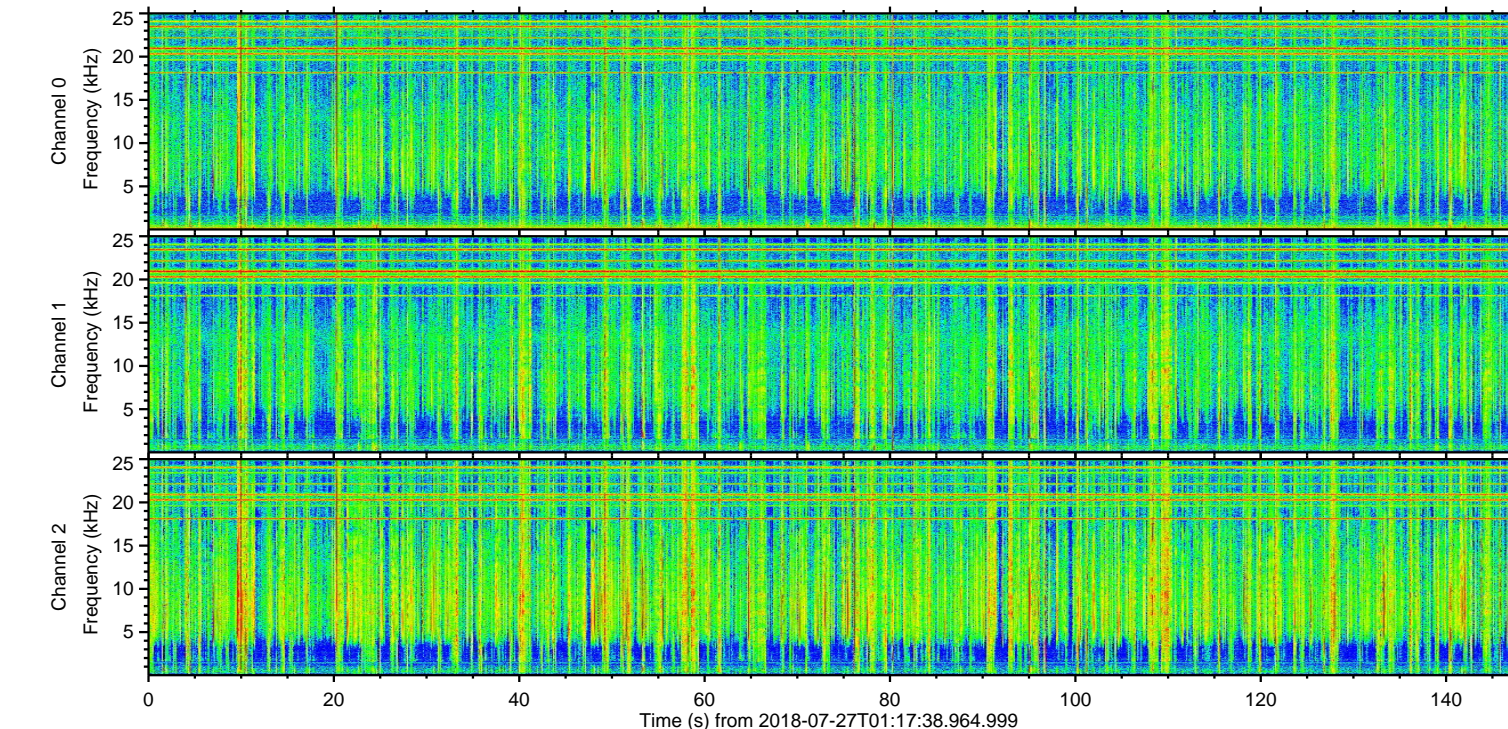
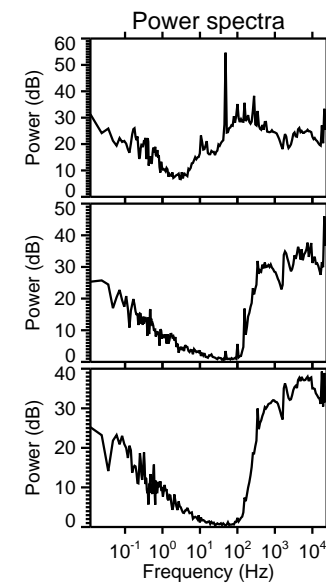
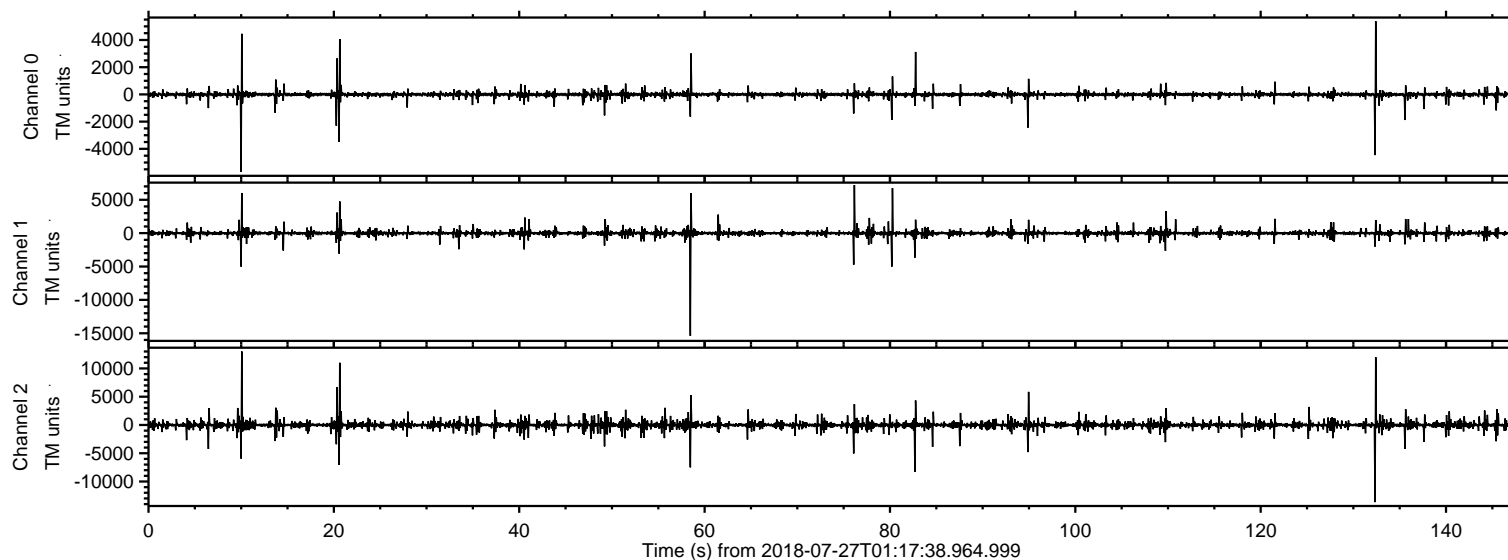
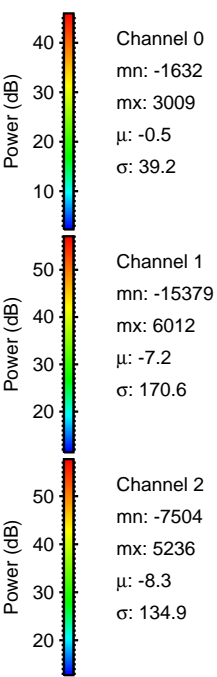
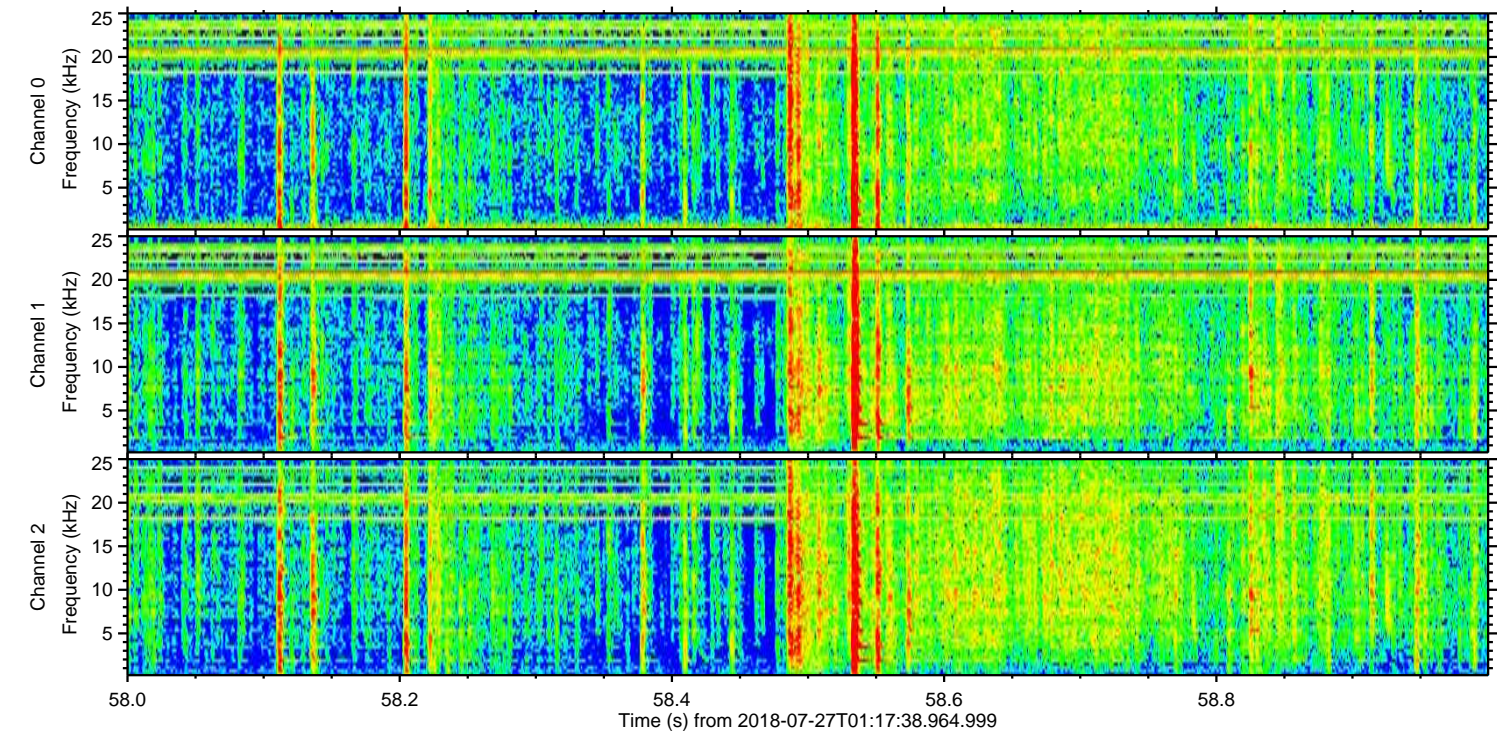
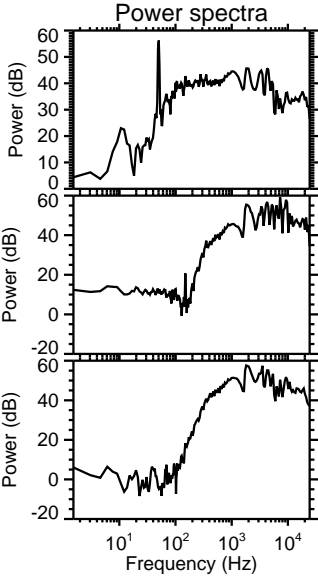
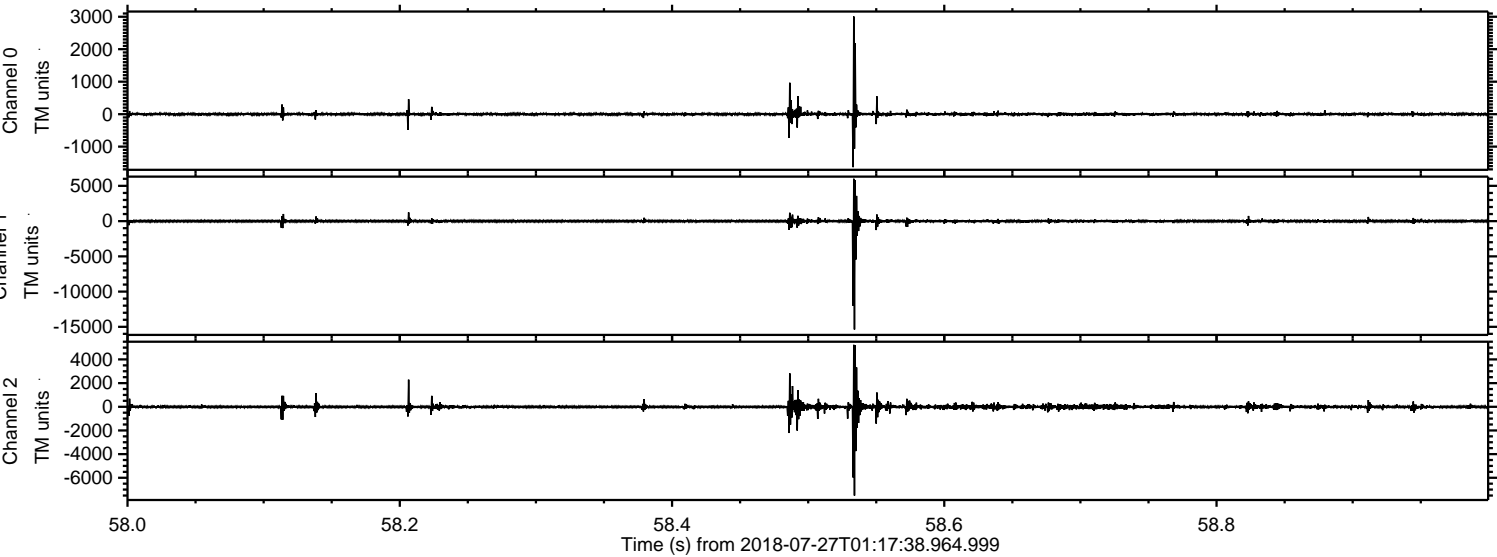


ELMAVAN 3D WAVEFORMS (Measured data sampled at 50 kHz) 51000 packets of 144 samples from 2018-07-27T01:17:38.964.999.

Processed Fri Jul 27 03:25:42 2018 by ELM ver.2012-10-06 from 001__elm20180727_011737__dat00.bin

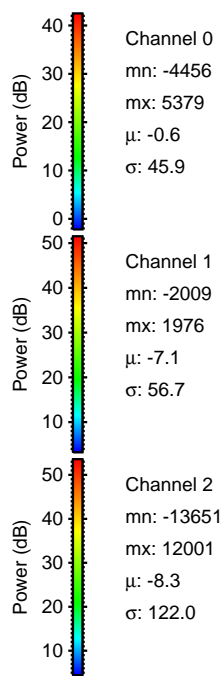
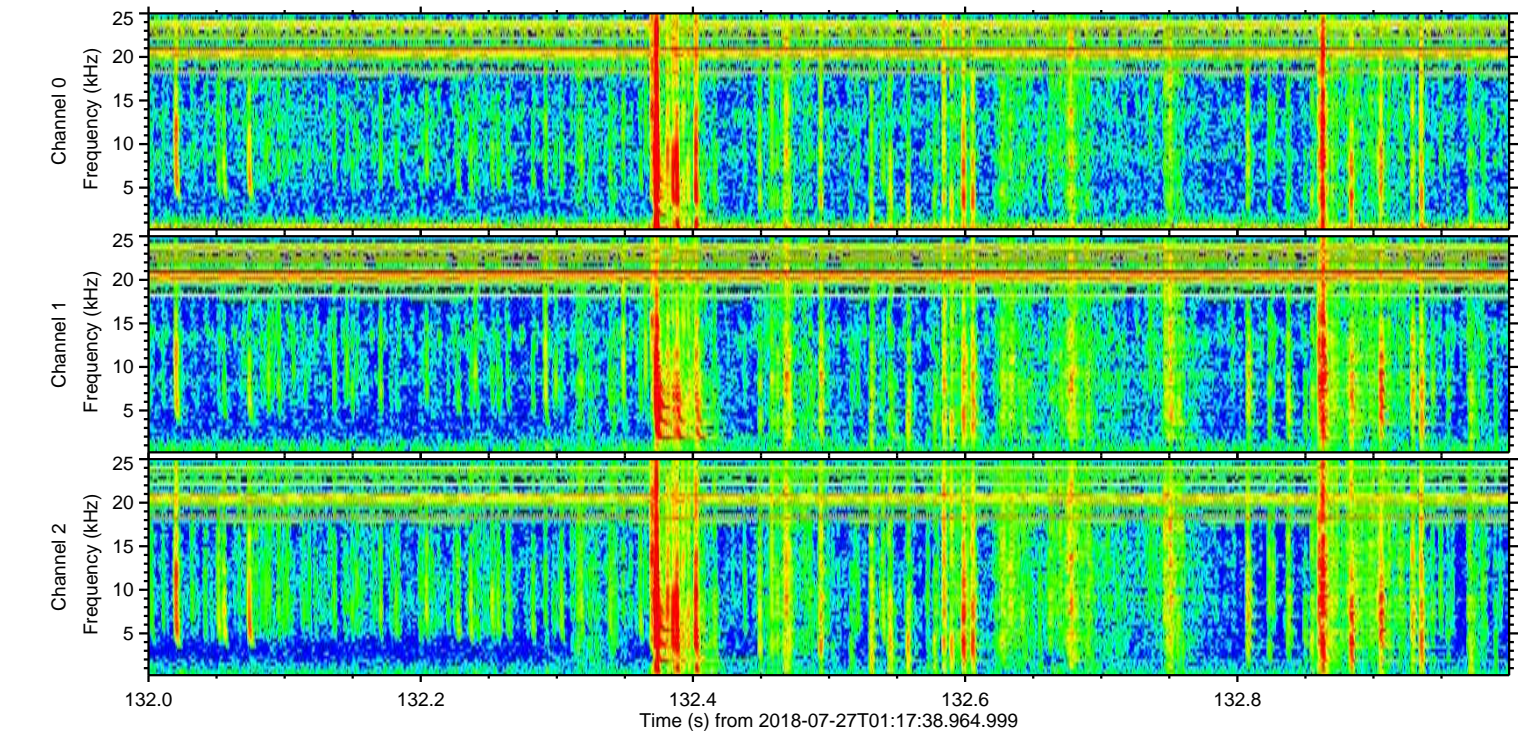
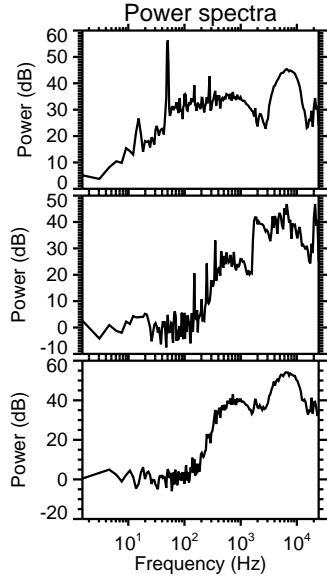
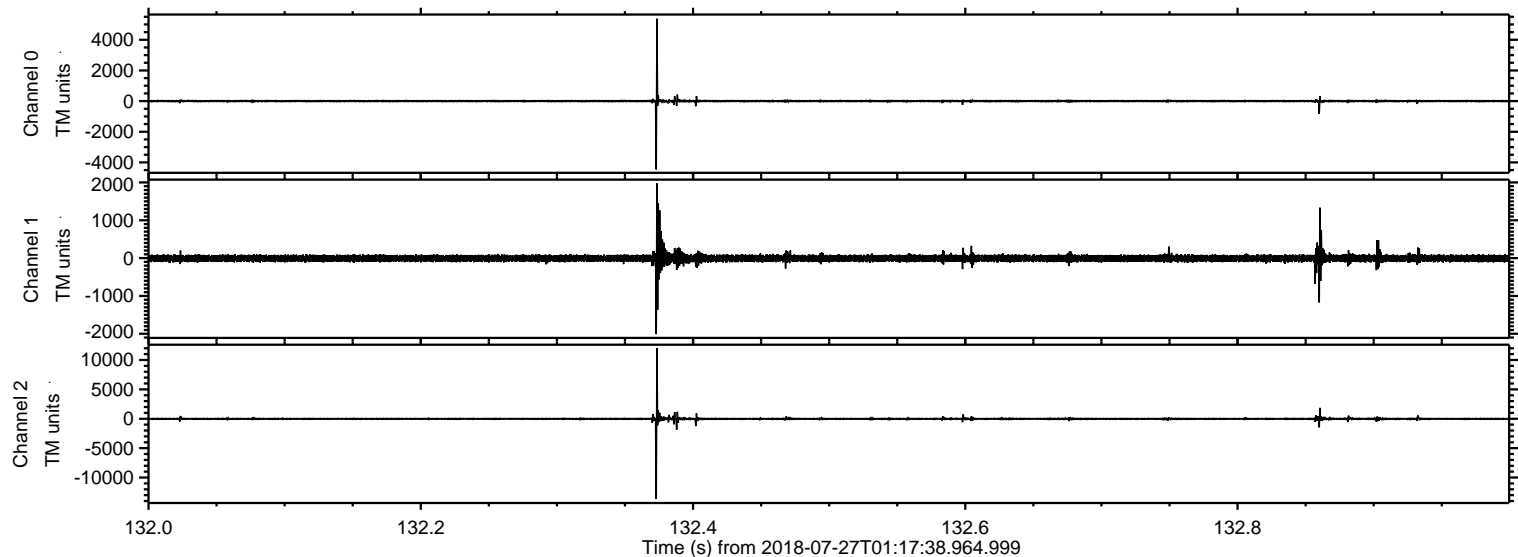


Processed Fri Jul 27 03:25:49 2018 by ELM ver.2012-10-06 from 001__elm20180727_011737__dat00.bin

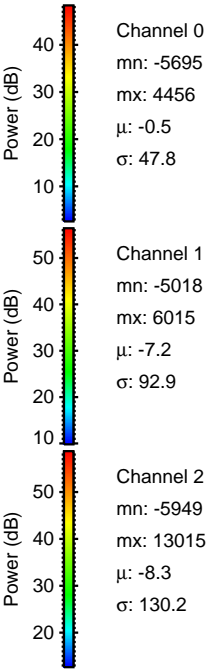
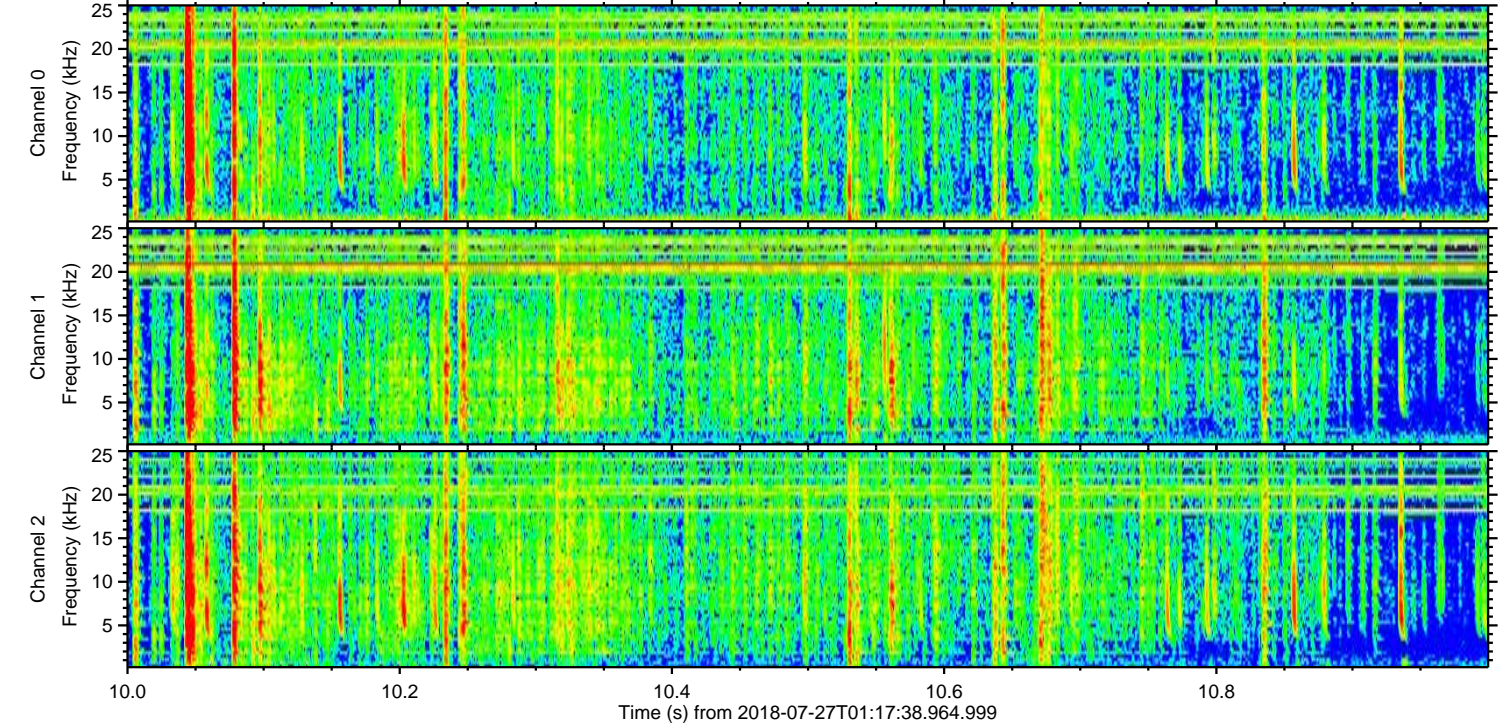
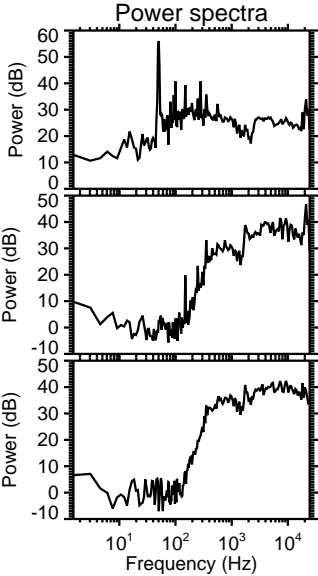
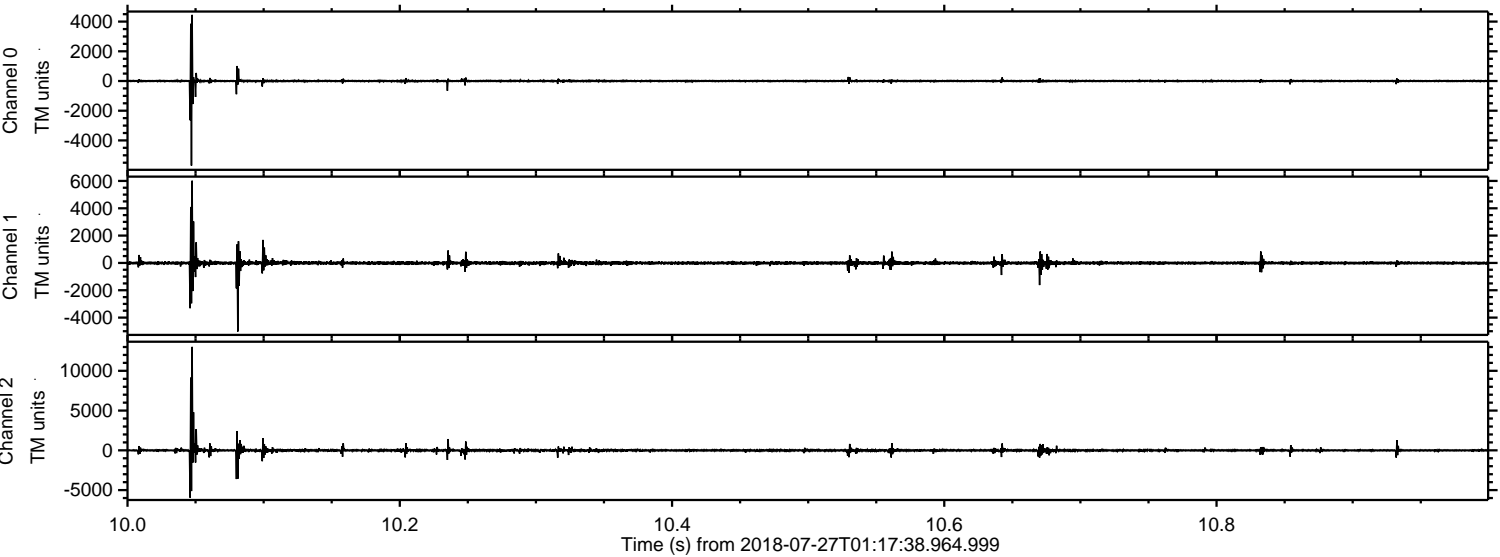


ELMAVAN 3D WAVEFORMS (Measured data sampled at 50 kHz) 51000 packets of 144 samples from 2018-07-27T01:17:38.964.999. Part 133/147

Processed Fri Jul 27 03:25:49 2018 by ELM ver.2012-10-06 from 001__elm20180727_011737__dat00.bin

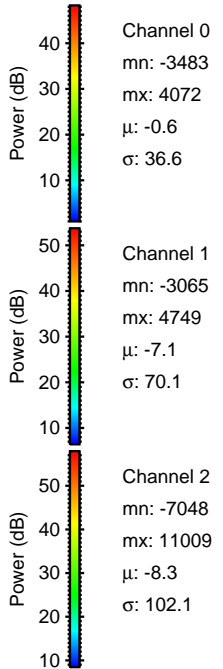
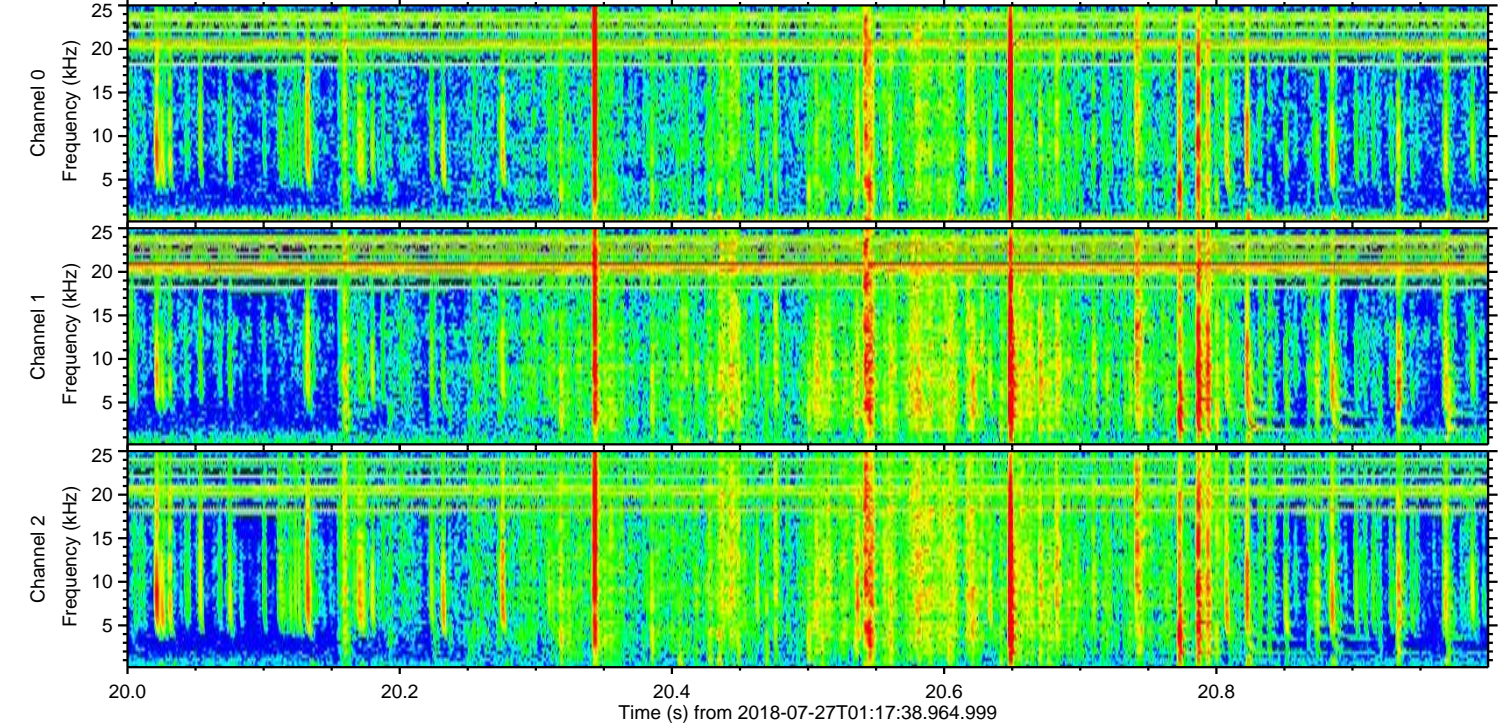
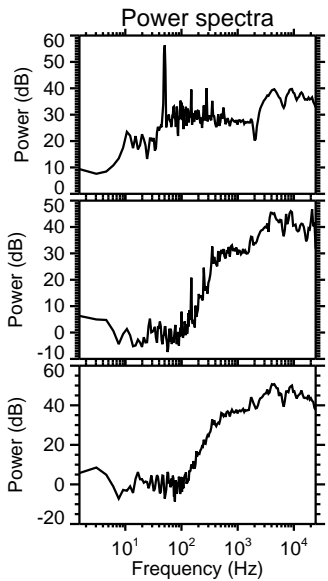
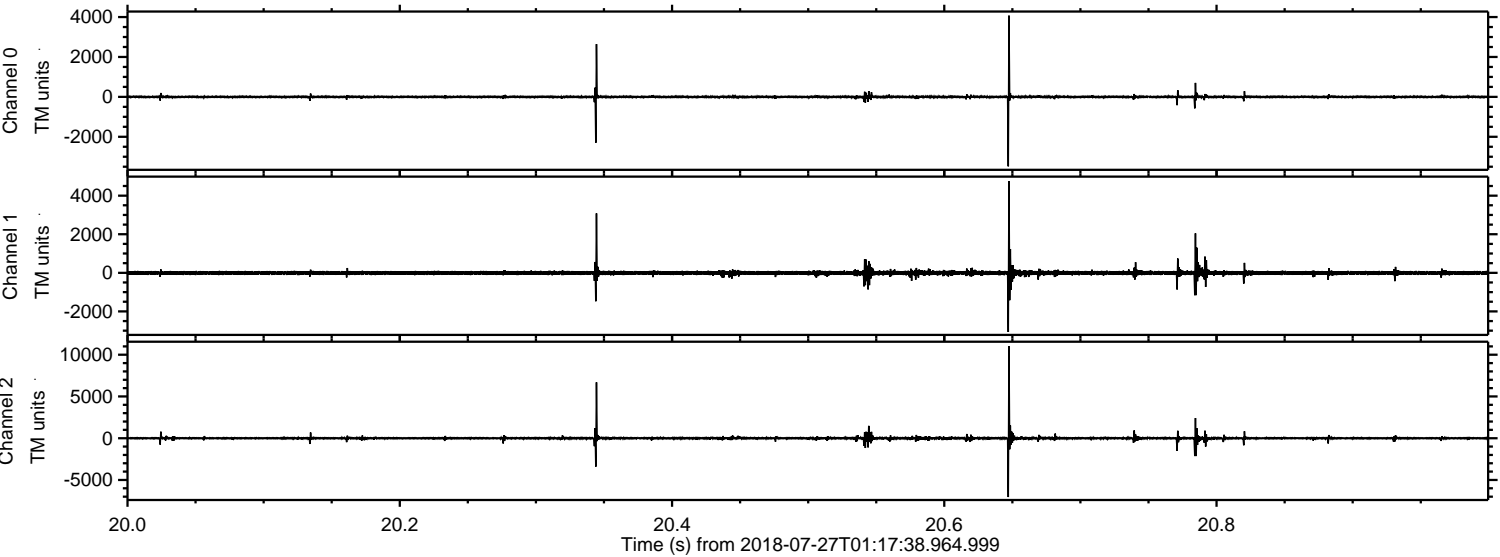


Processed Fri Jul 27 03:25:50 2018 by ELM ver.2012-10-06 from 001__elm20180727_011737__dat00.bin

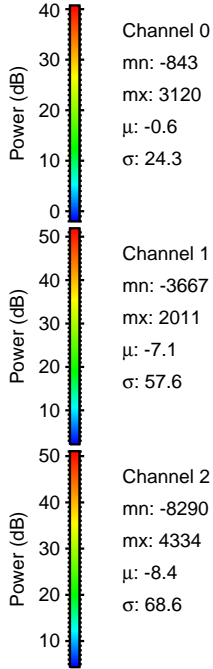
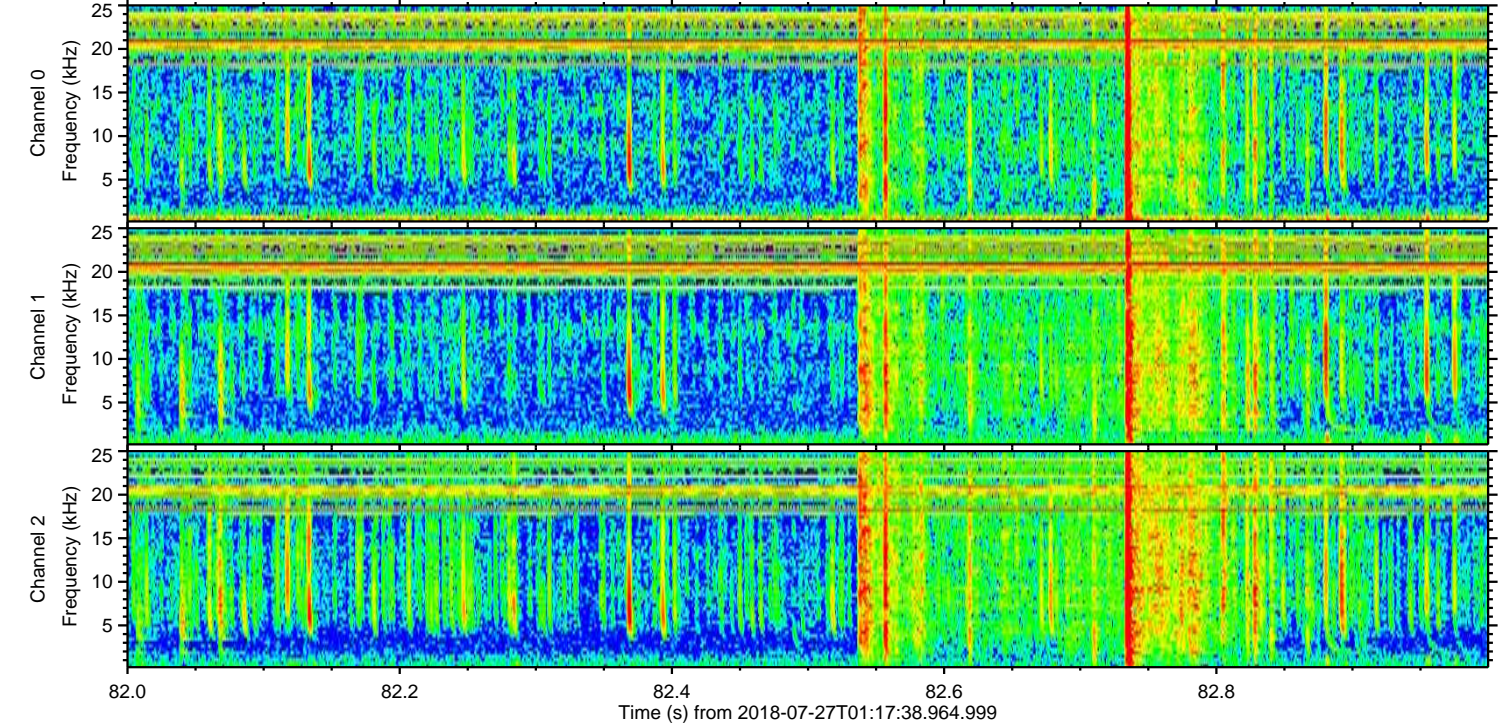
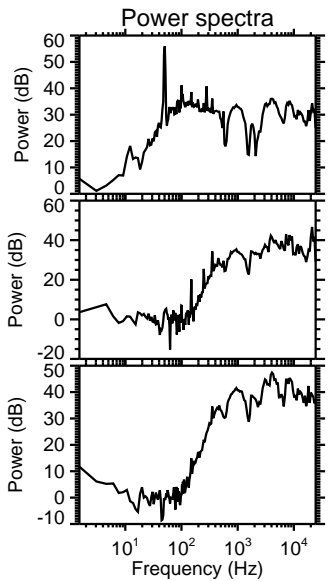
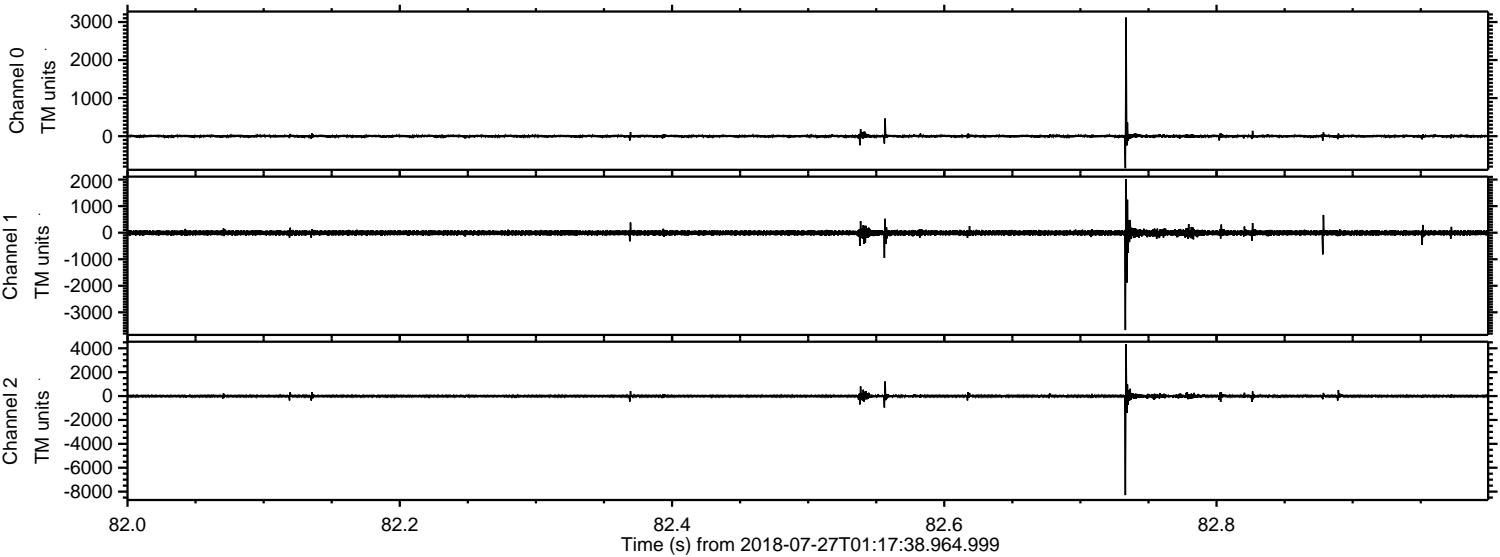


ELMAVAN 3D WAVEFORMS (Measured data sampled at 50 kHz) 51000 packets of 144 samples from 2018-07-27T01:17:38.964.999. Part 21/147

Processed Fri Jul 27 03:25:50 2018 by ELM ver.2012-10-06 from 001__elm20180727_011737__dat00.bin

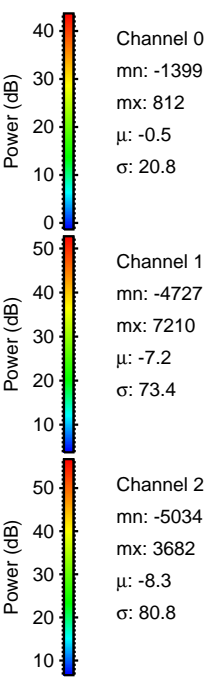
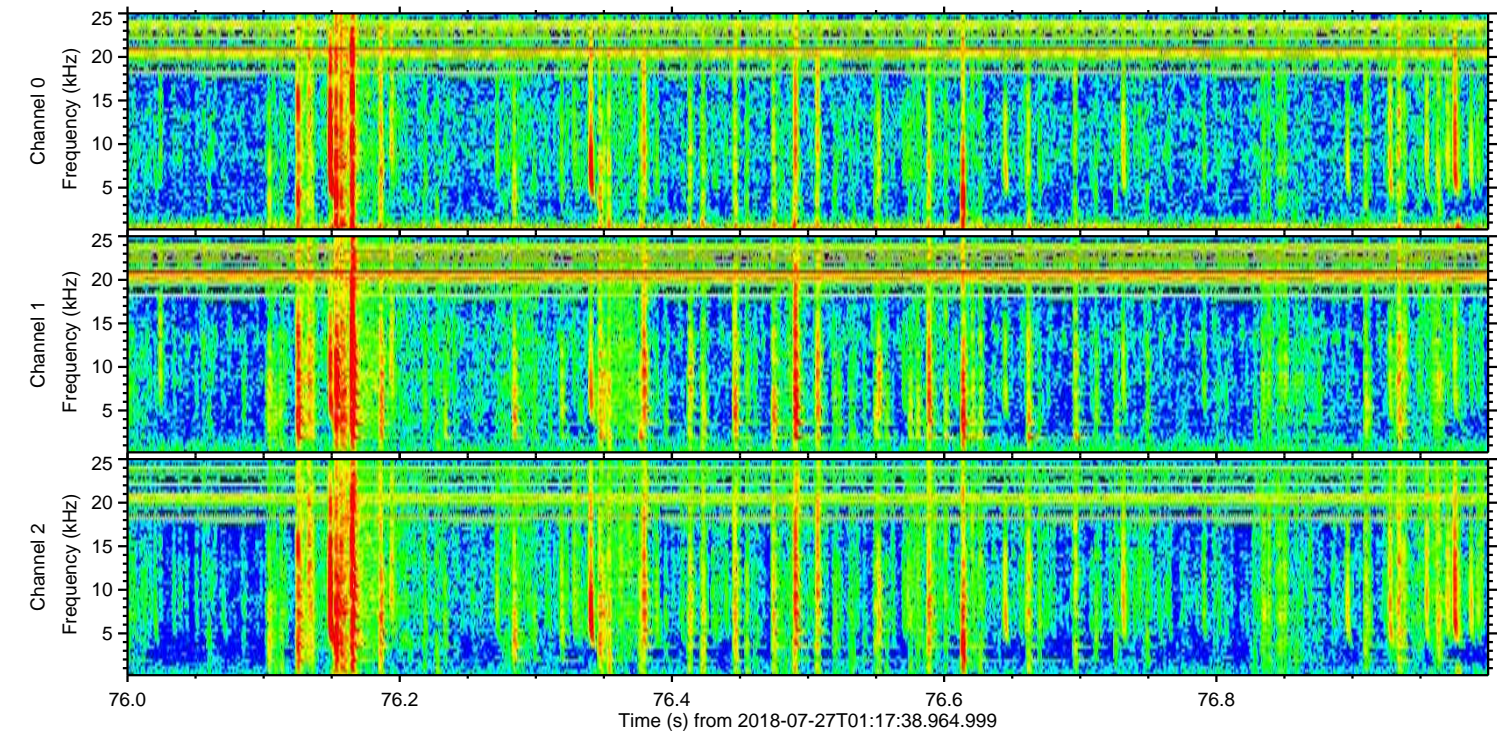
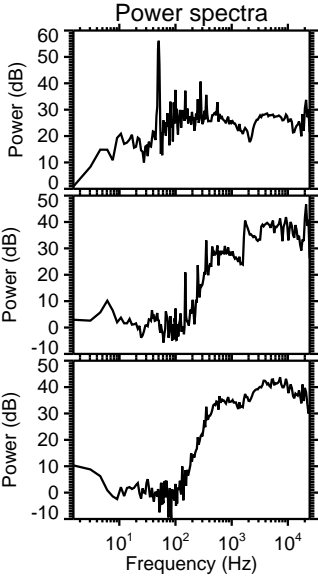
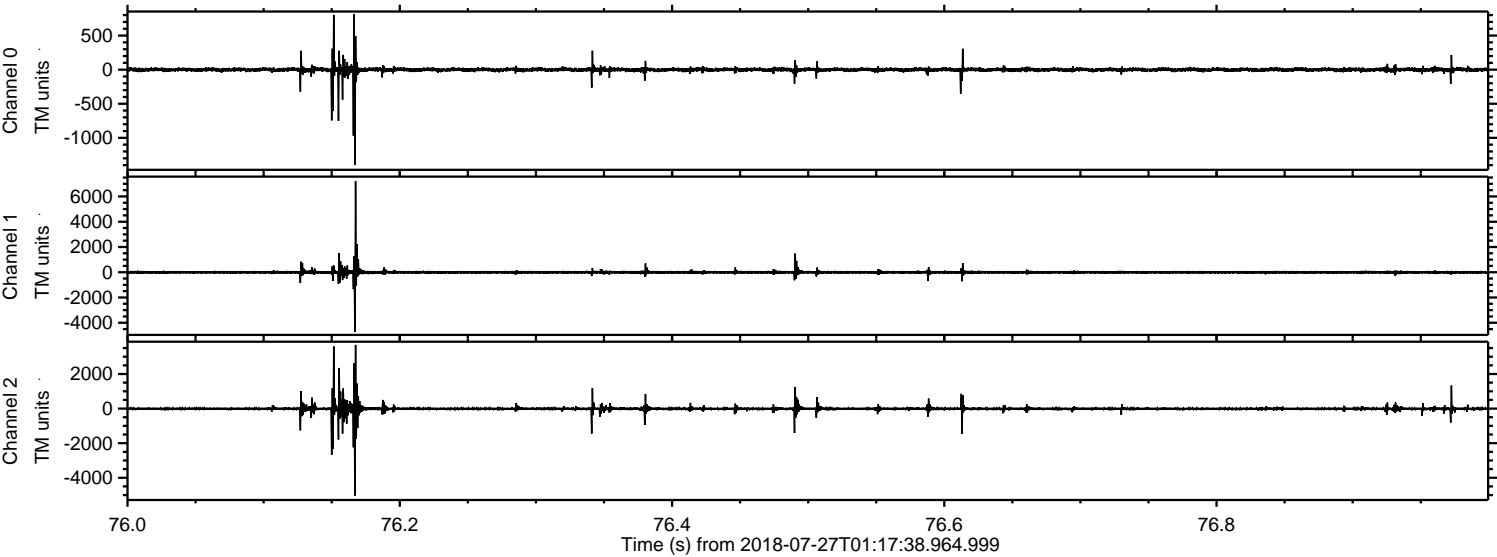


Processed Fri Jul 27 03:25:51 2018 by ELM ver.2012-10-06 from 001__elm20180727_011737__dat00.bin

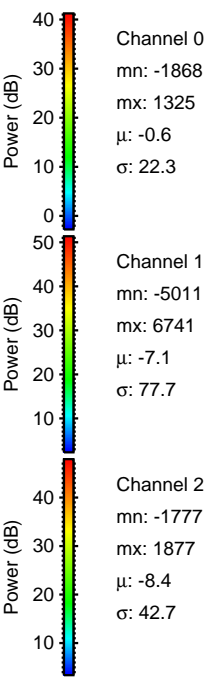
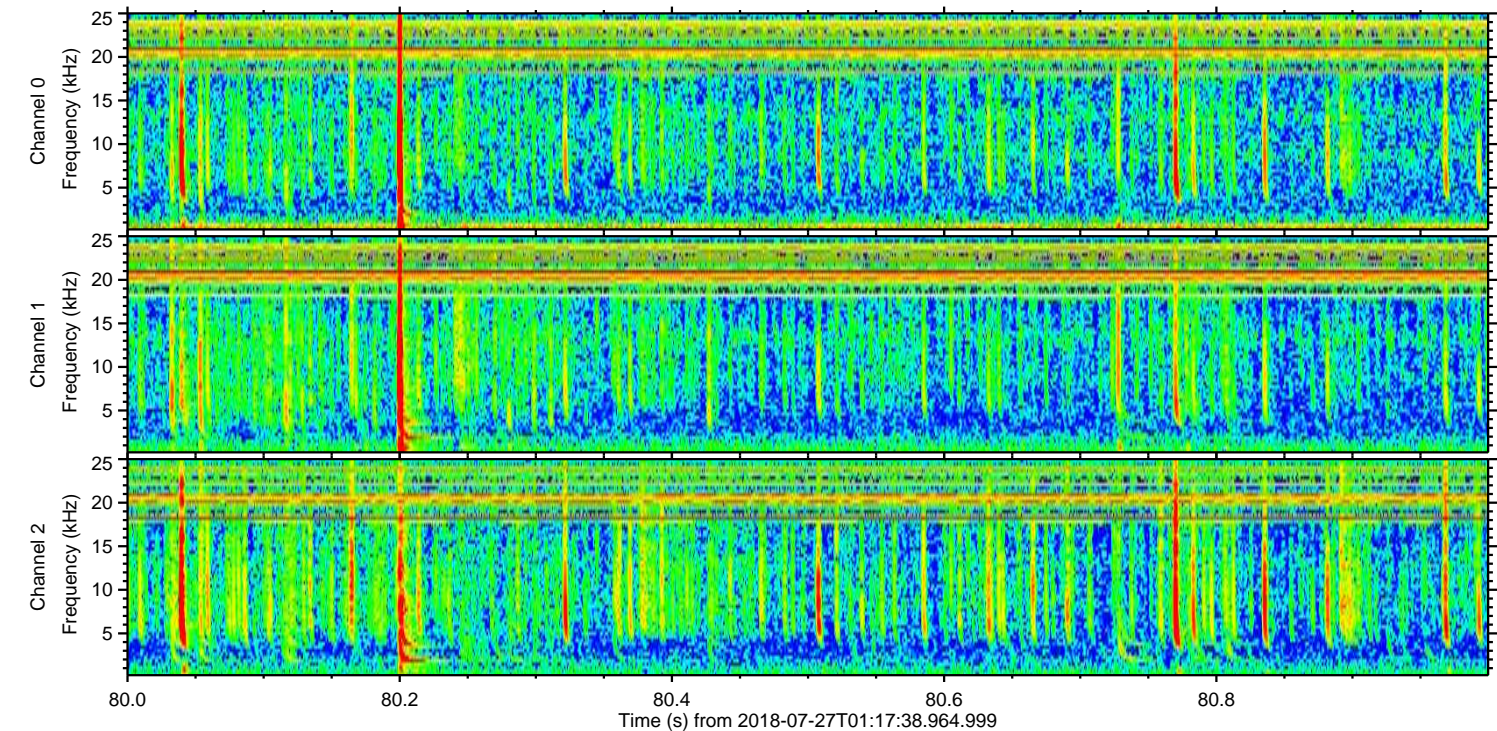
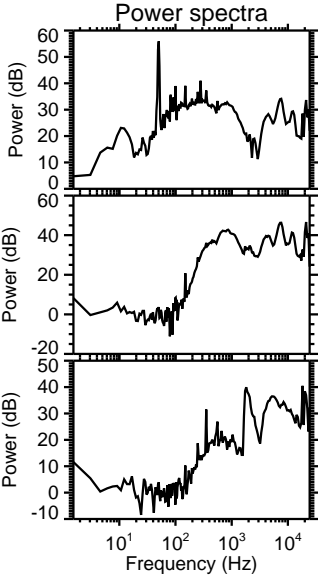
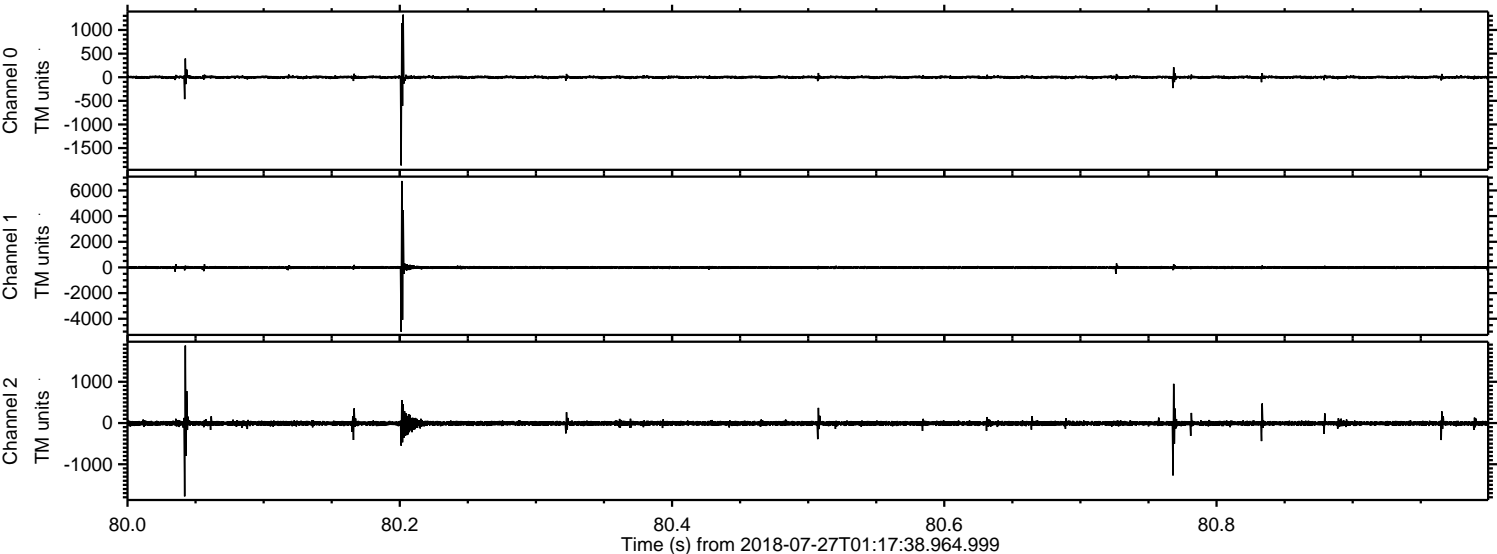


ELMAVAN 3D WAVEFORMS (Measured data sampled at 50 kHz) 51000 packets of 144 samples from 2018-07-27T01:17:38.964.999. Part 77/147

Processed Fri Jul 27 03:25:52 2018 by ELM ver.2012-10-06 from 001__elm20180727_011737__dat00.bin



Processed Fri Jul 27 03:25:52 2018 by ELM ver.2012-10-06 from 001__elm20180727_011737__dat00.bin

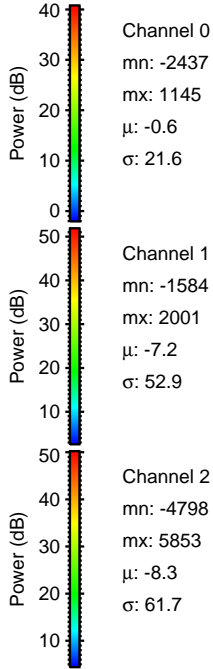
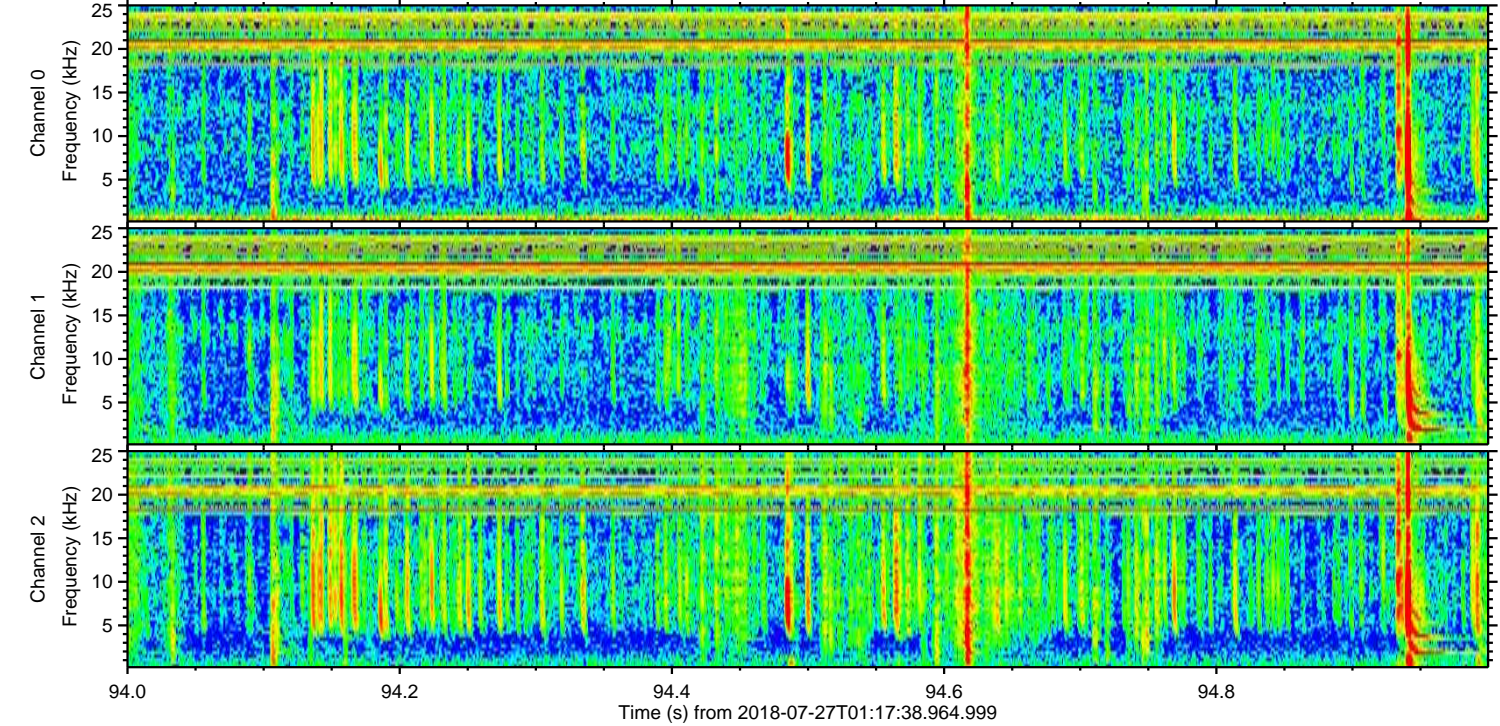
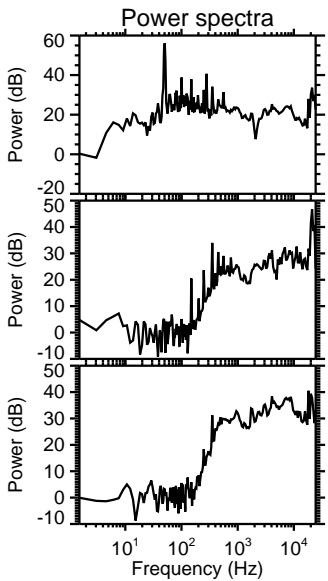
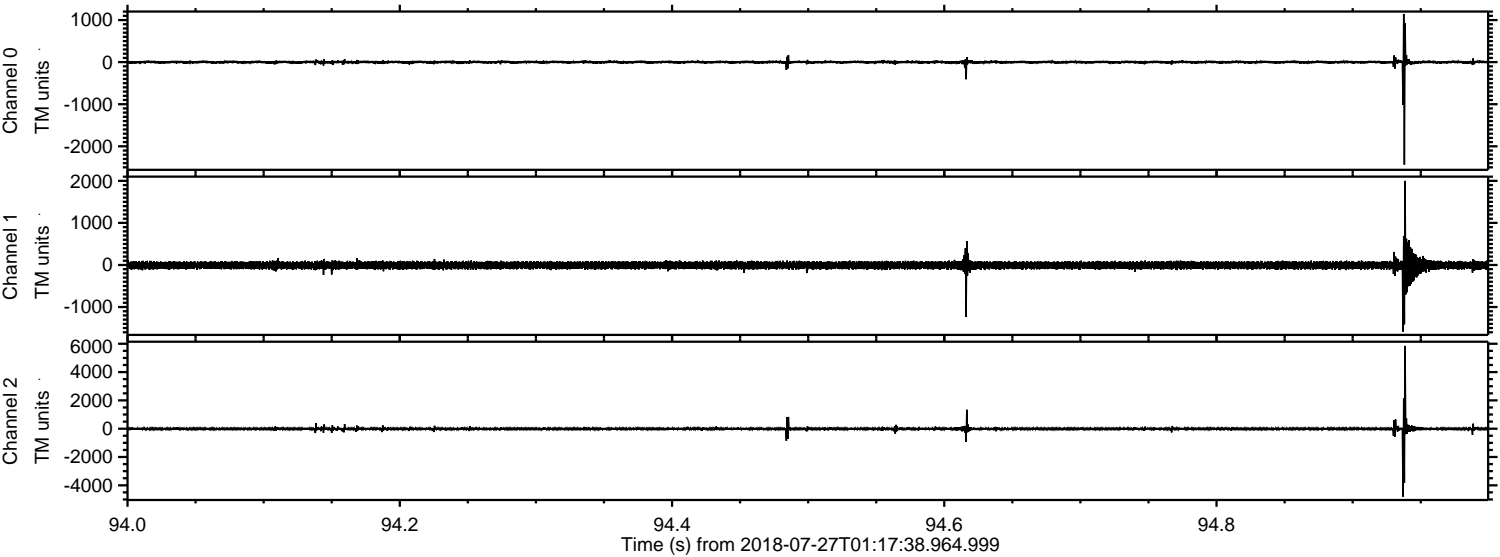


Channel 0
mn: -1868
mx: 1325
 μ : -0.6
 σ : 22.3

Channel 1
mn: -5011
mx: 6741
 μ : -7.1
 σ : 77.7

Channel 2
mn: -1777
mx: 1877
 μ : -8.4
 σ : 42.7

Processed Fri Jul 27 03:25:53 2018 by ELM ver.2012-10-06 from 001__elm20180727_011737__dat00.bin



Channel 0
mn: -2437
mx: 1145
 μ : -0.6
 σ : 21.6

Channel 1
mn: -1584
mx: 2001
 μ : -7.2
 σ : 52.9

Channel 2
mn: -4798
mx: 5853
 μ : -8.3
 σ : 61.7

Processed Fri Jul 27 03:25:54 2018 by ELM ver.2012-10-06 from 001__elm20180727_011737__dat00.bin

