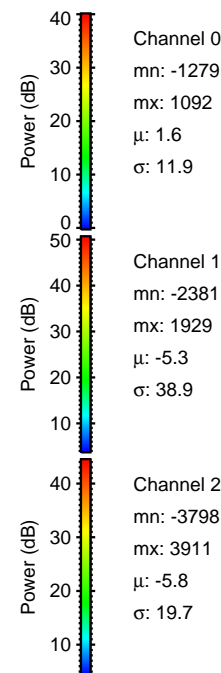
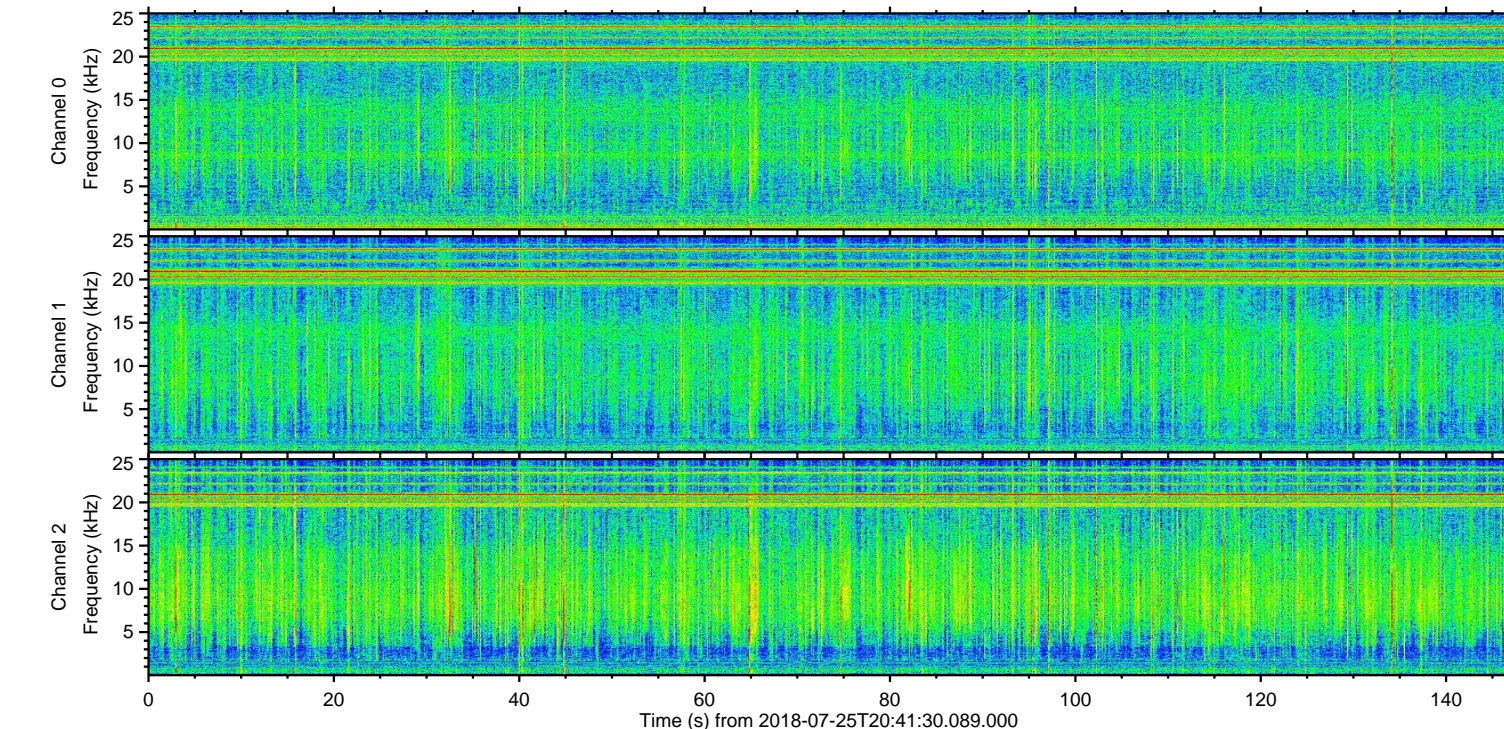
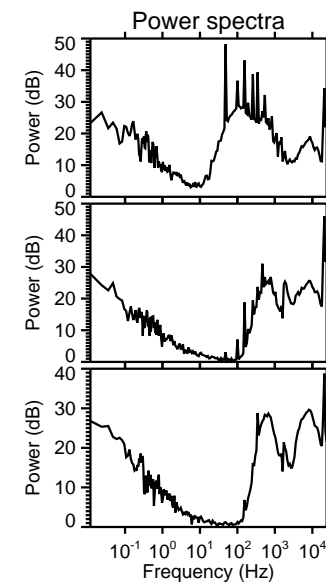
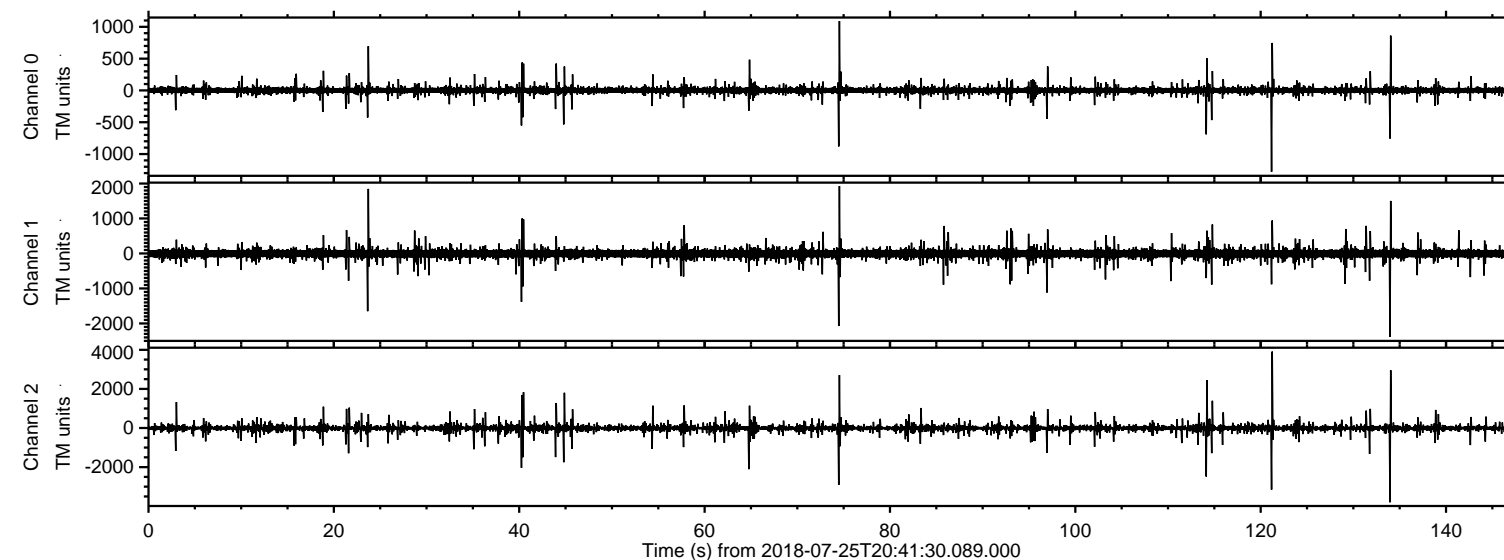


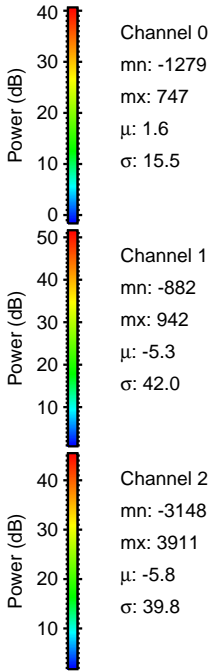
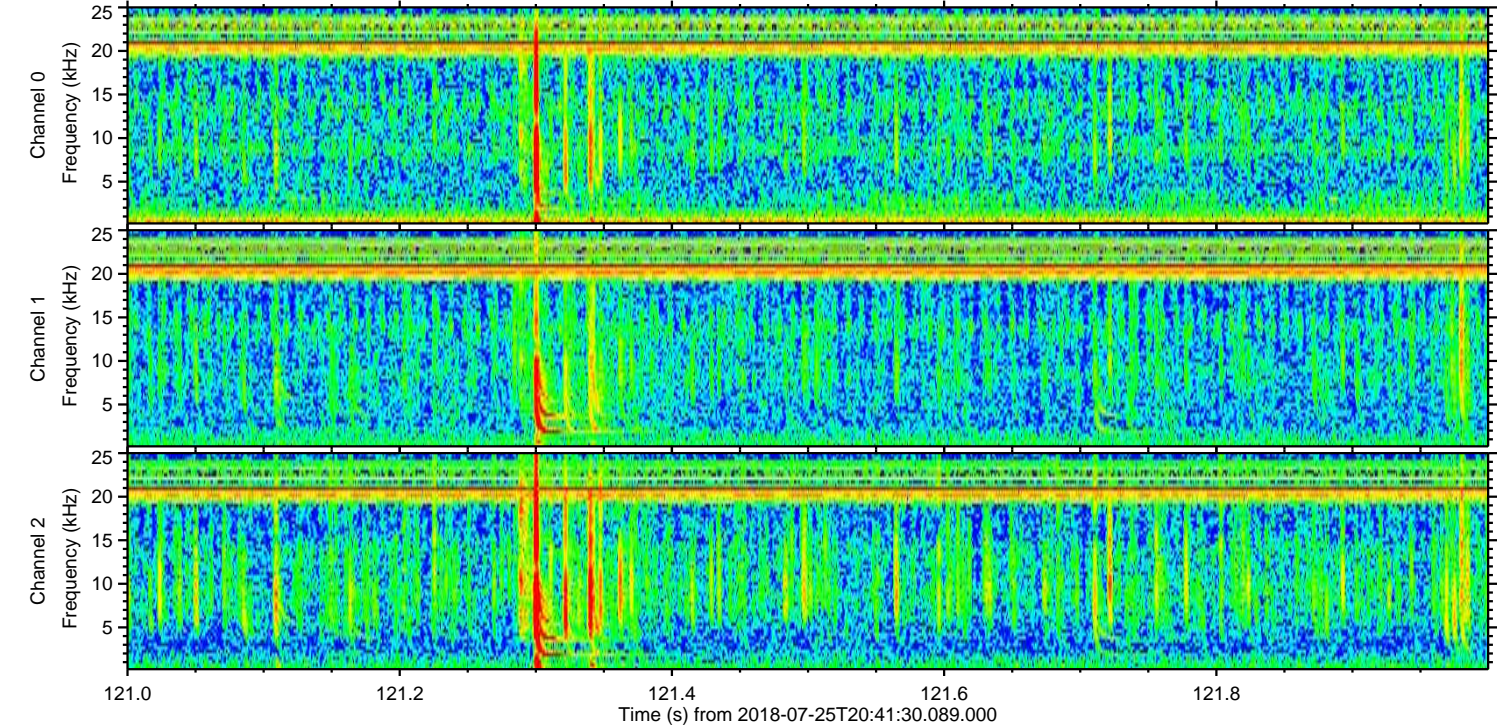
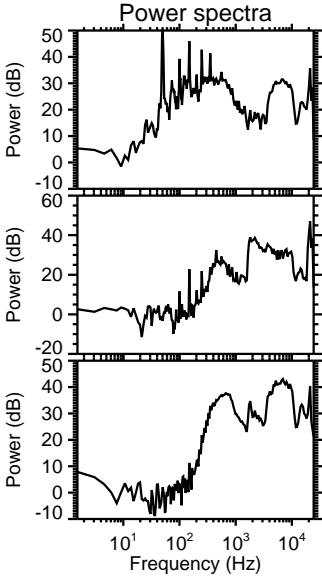
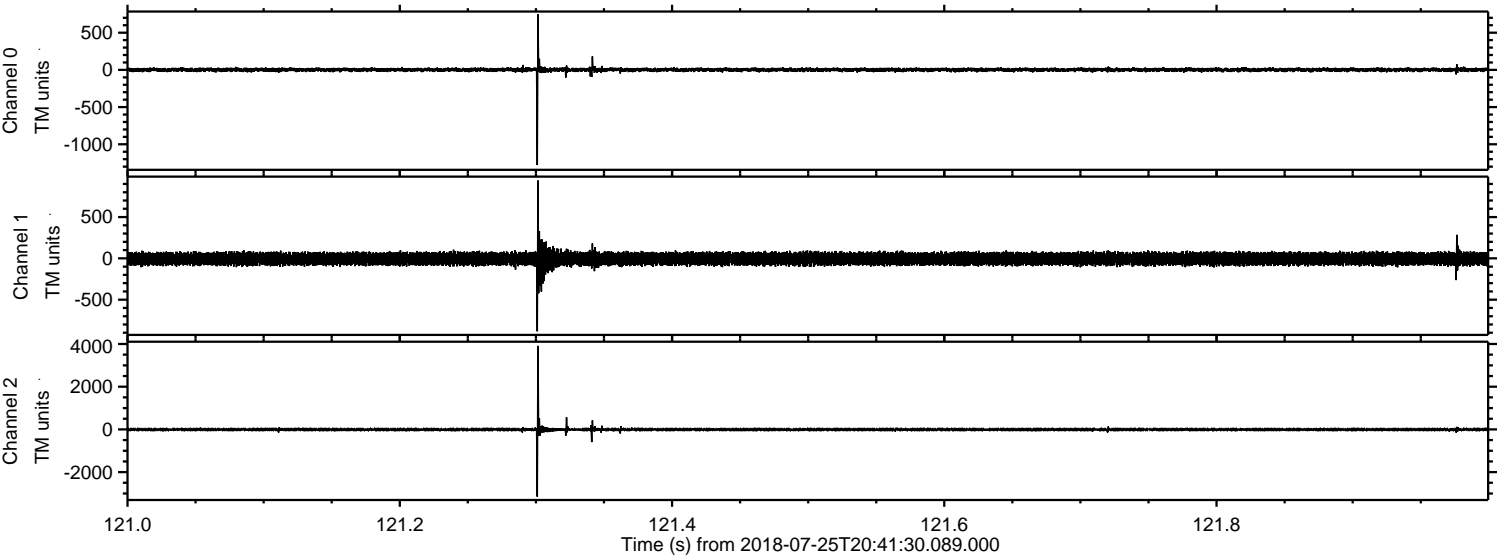
ELMAVAN 3D WAVEFORMS (Measured data sampled at 50 kHz) 51000 packets of 144 samples from 2018-07-25T20:41:30.089.000.

Processed Wed Jul 25 22:48:57 2018 by ELM ver.2012-10-06 from 001__elm20180725_204129__dat00.bin



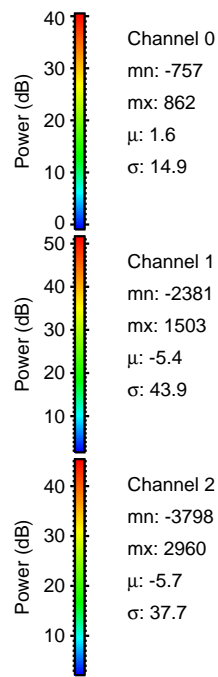
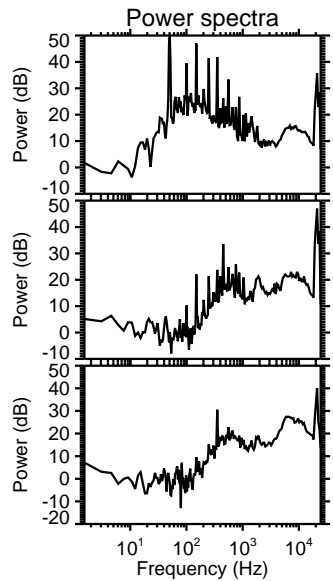
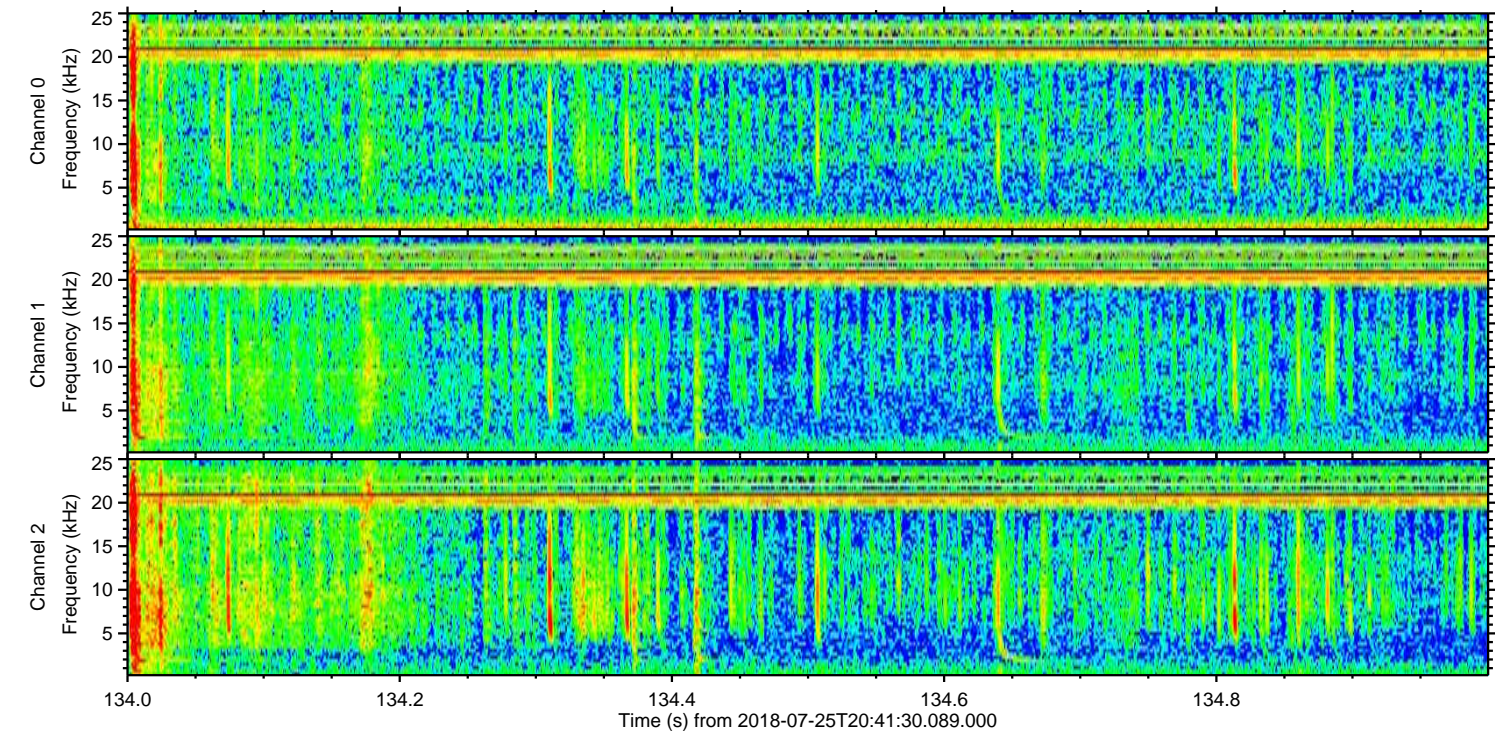
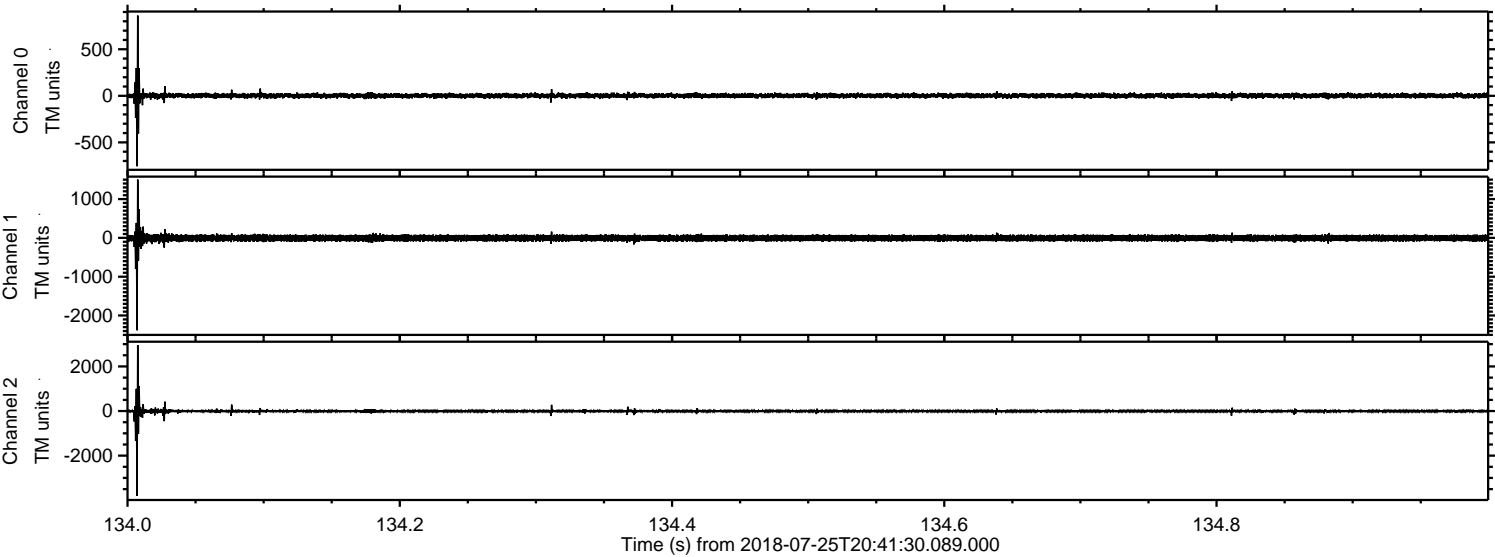
ELMAVAN 3D WAVEFORMS (Measured data sampled at 50 kHz) 51000 packets of 144 samples from 2018-07-25T20:41:30.089.000. Part 122/147

Processed Wed Jul 25 22:49:03 2018 by ELM ver.2012-10-06 from 001__elm20180725_204129__dat00.bin

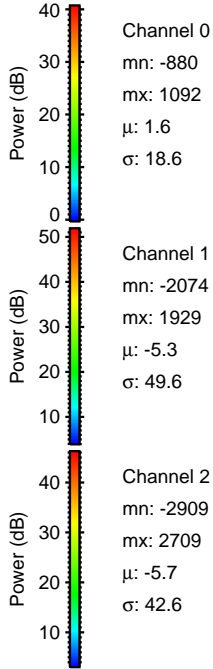
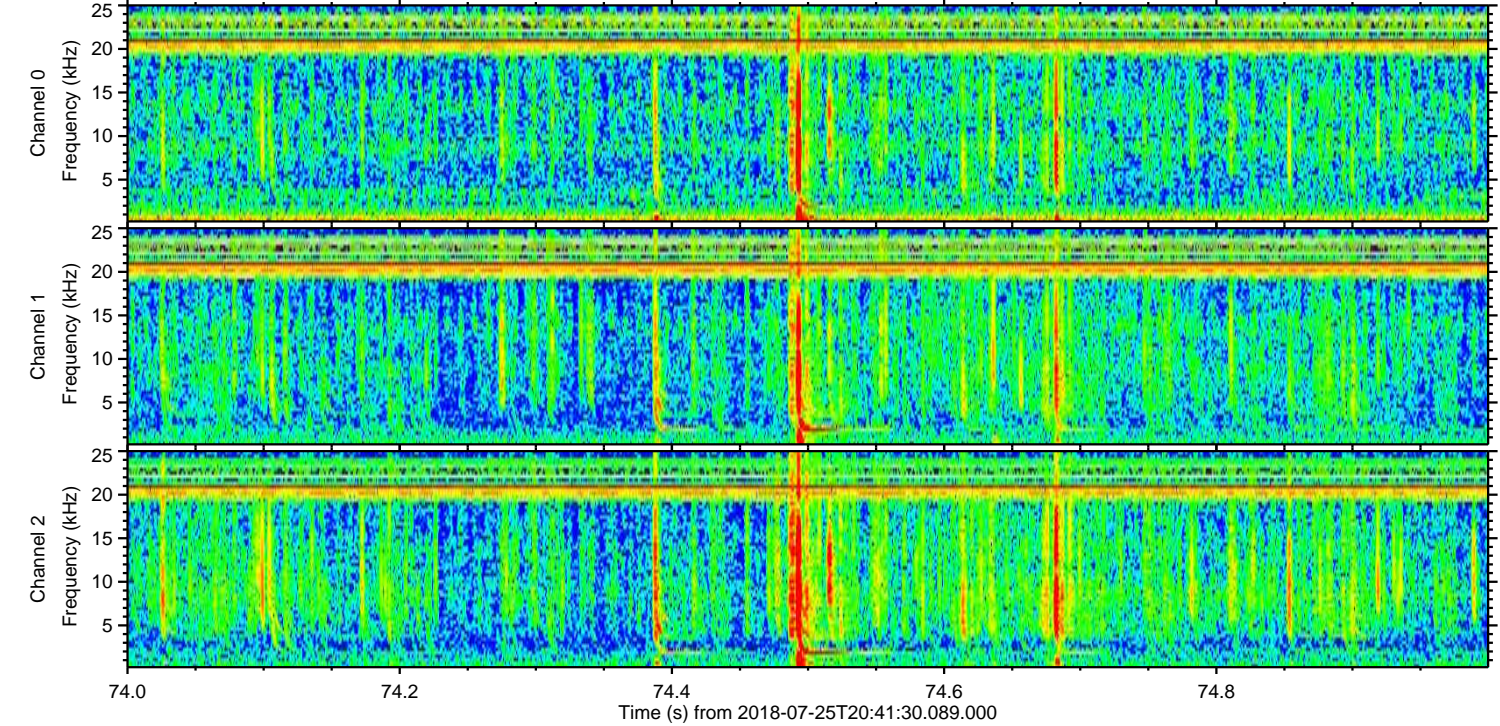
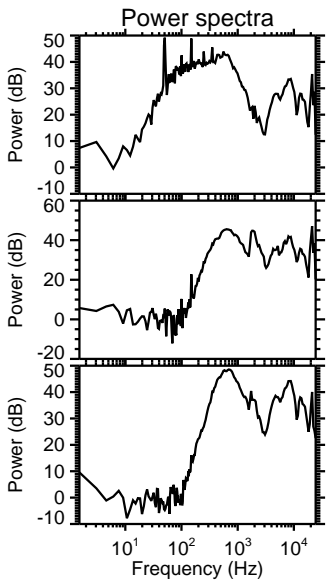
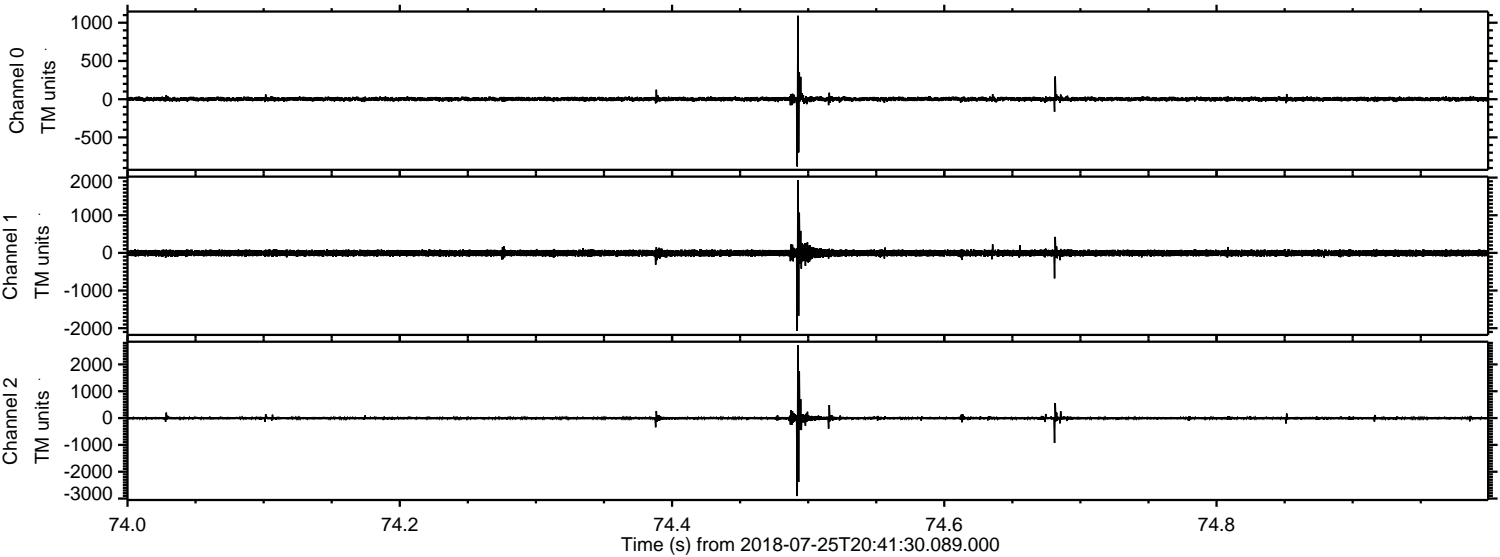


ELMAVAN 3D WAVEFORMS (Measured data sampled at 50 kHz) 51000 packets of 144 samples from 2018-07-25T20:41:30.089.000. Part 135/147

Processed Wed Jul 25 22:49:04 2018 by ELM ver.2012-10-06 from 001__elm20180725_204129__dat00.bin

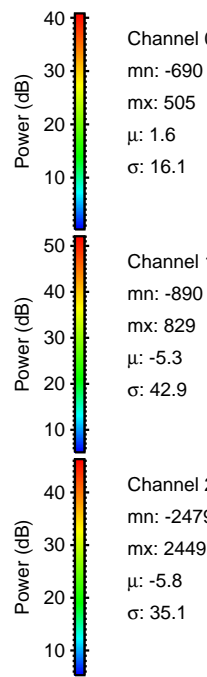
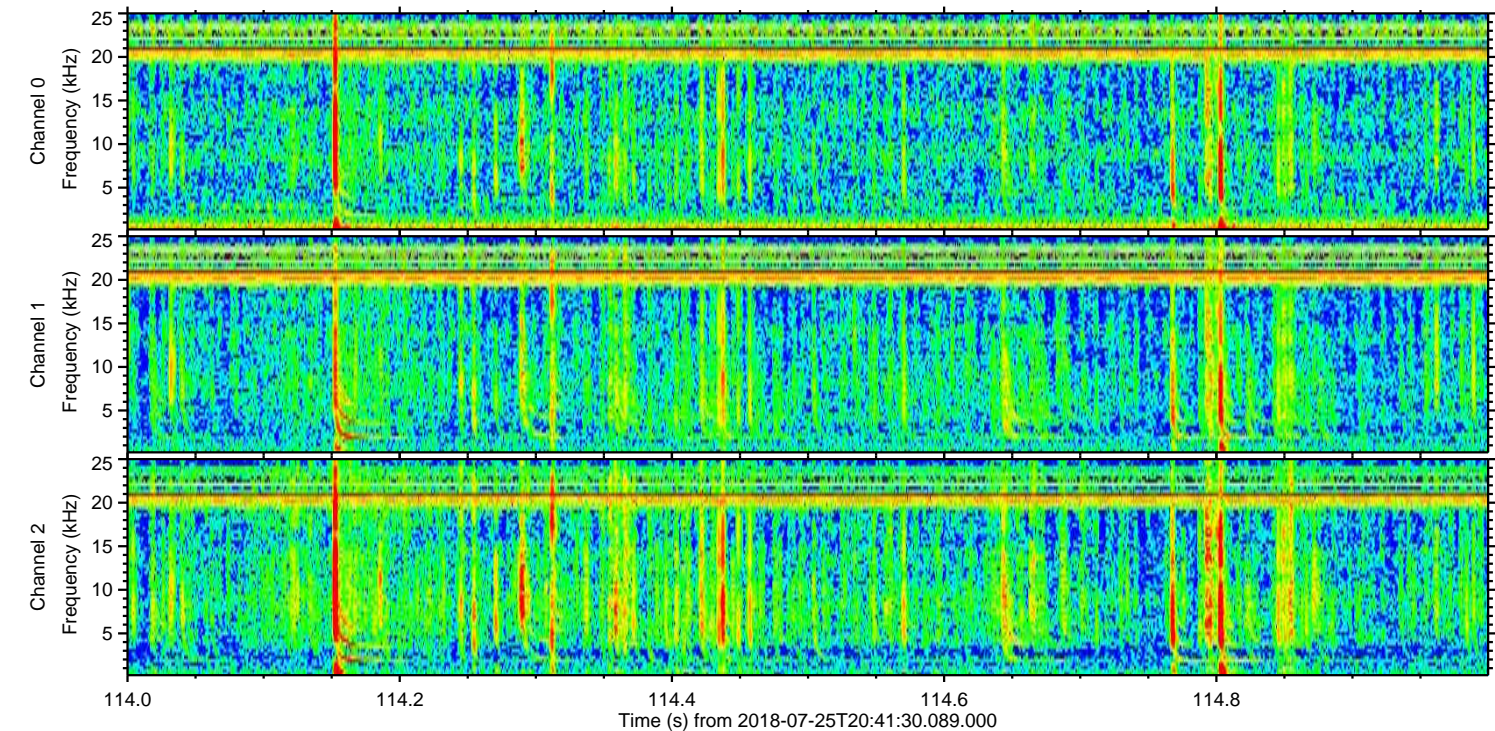
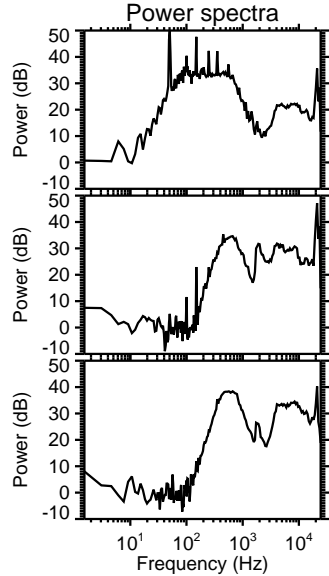
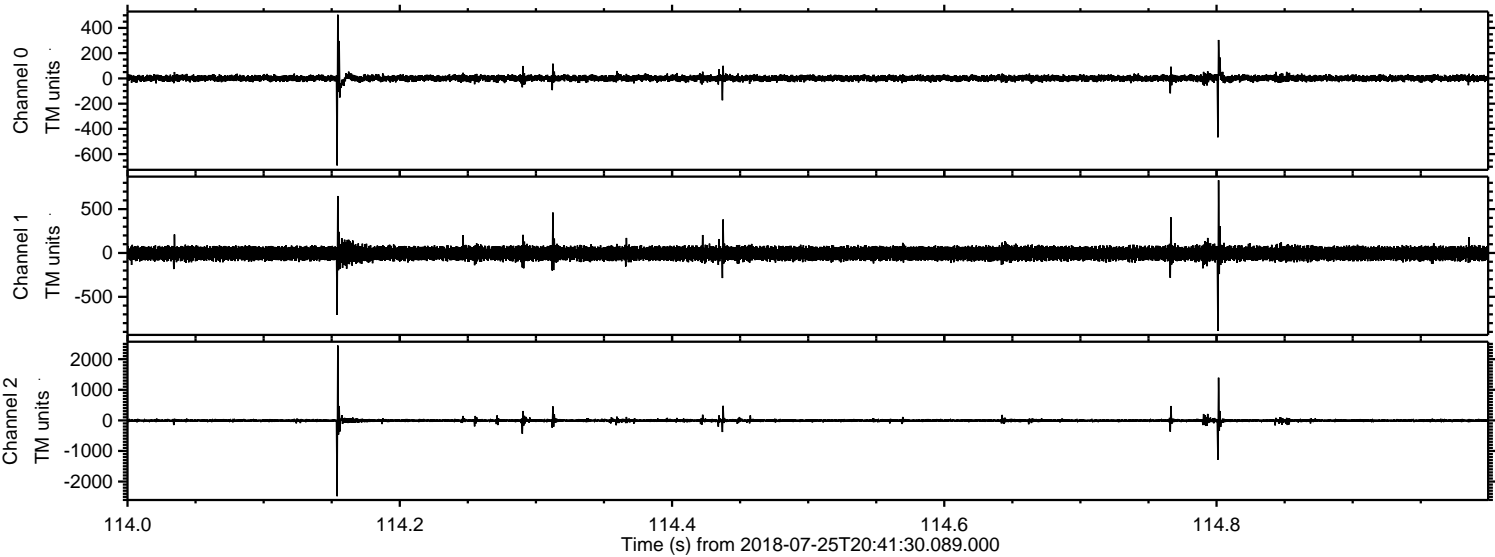


Processed Wed Jul 25 22:49:05 2018 by ELM ver.2012-10-06 from 001__elm20180725_204129__dat00.bin

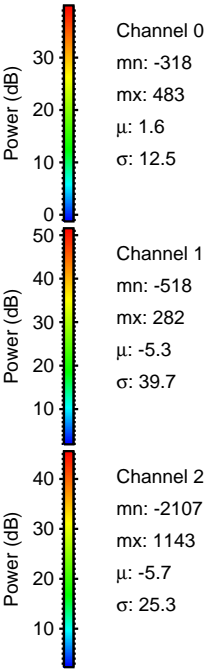
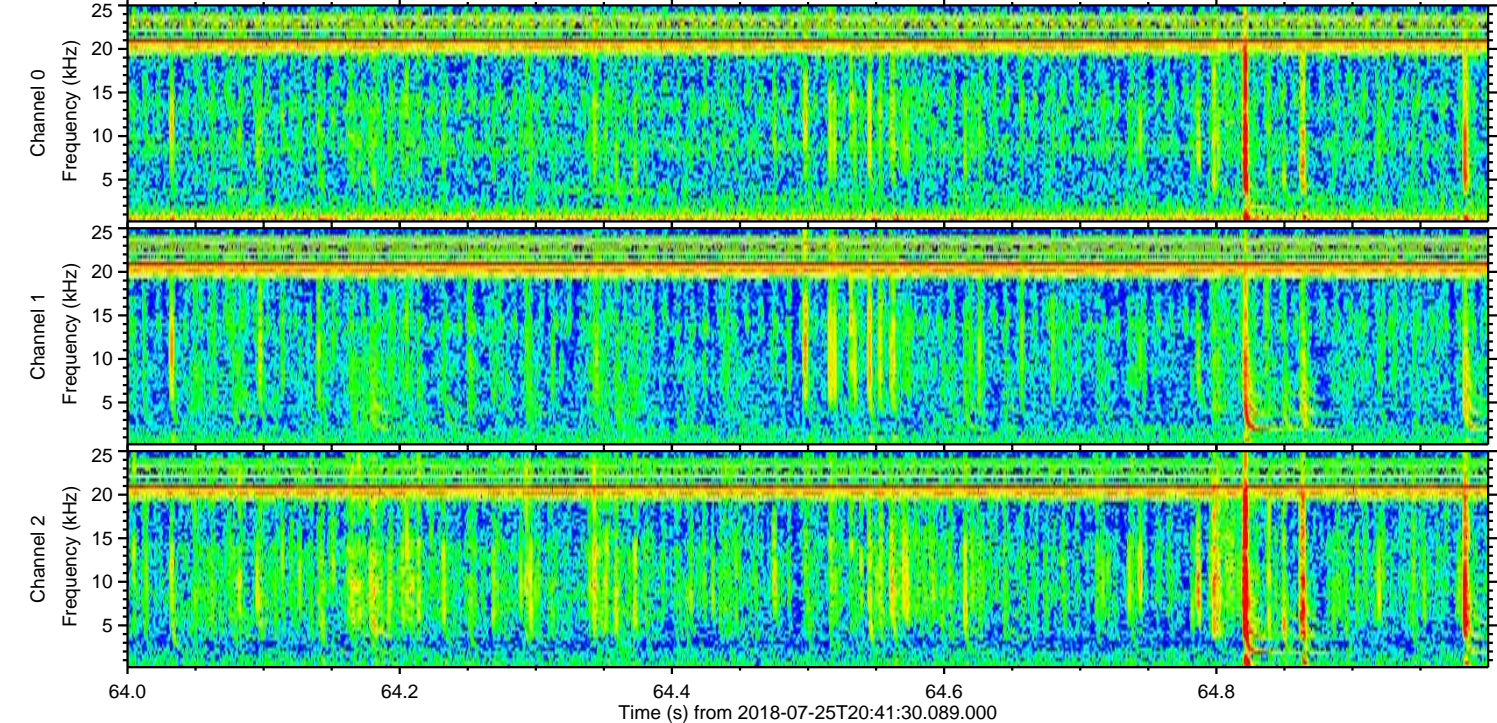
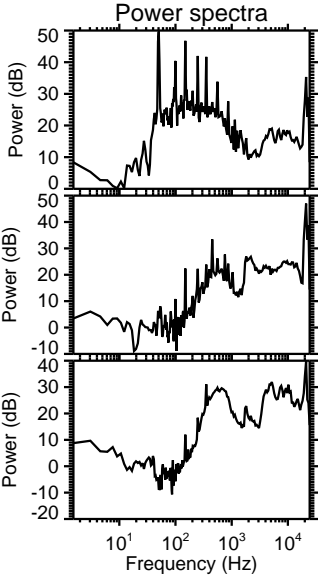
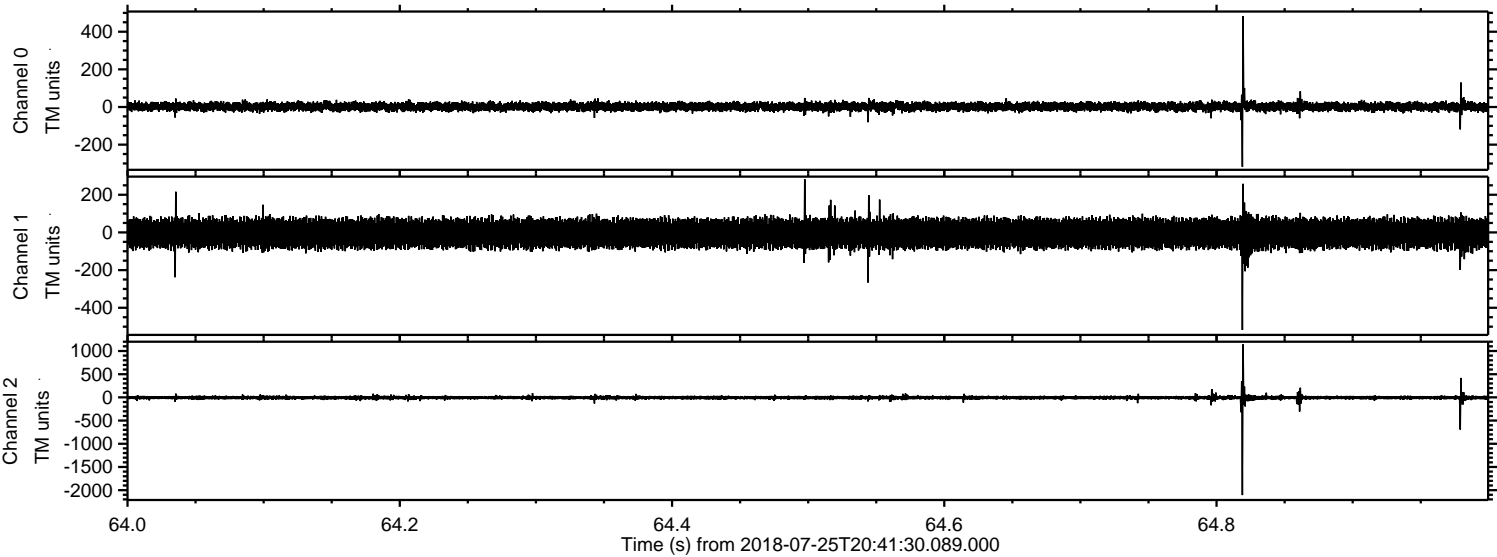


ELMAVAN 3D WAVEFORMS (Measured data sampled at 50 kHz) 51000 packets of 144 samples from 2018-07-25T20:41:30.089.000. Part 115/147

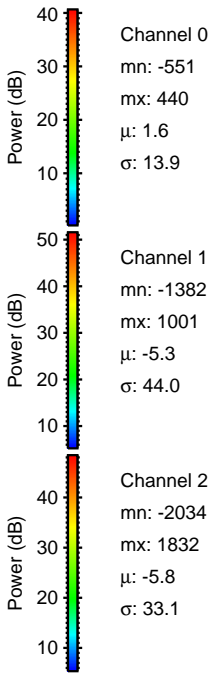
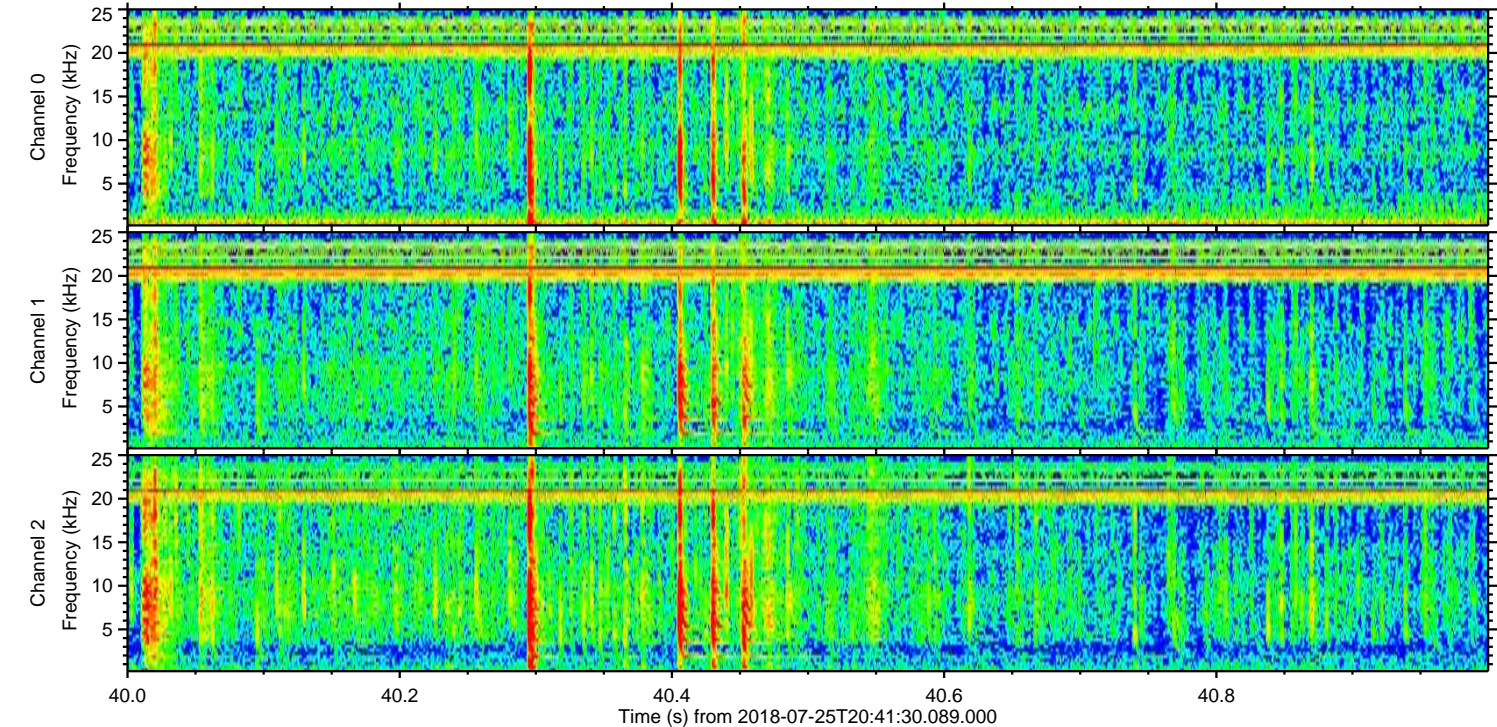
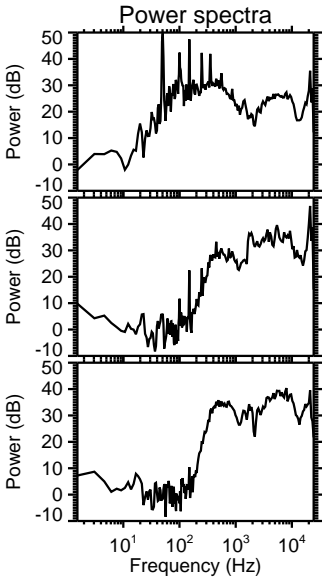
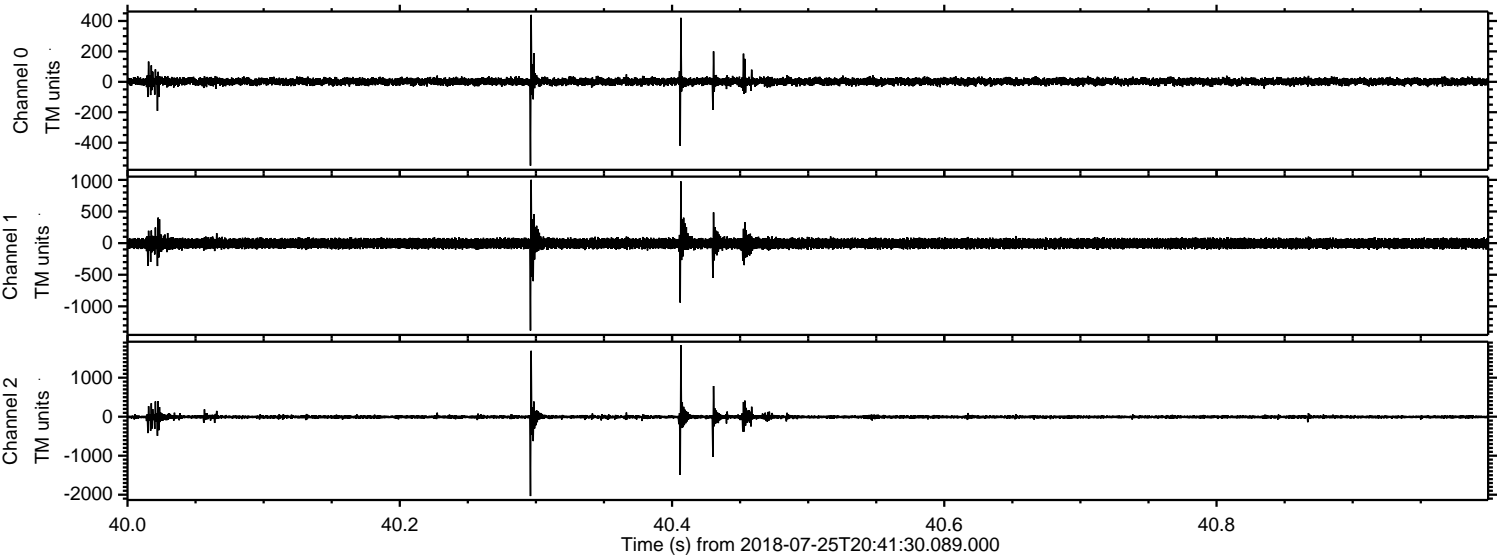
Processed Wed Jul 25 22:49:06 2018 by ELM ver.2012-10-06 from 001__elm20180725_204129__dat00.bin



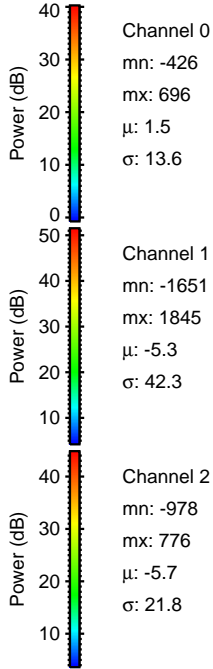
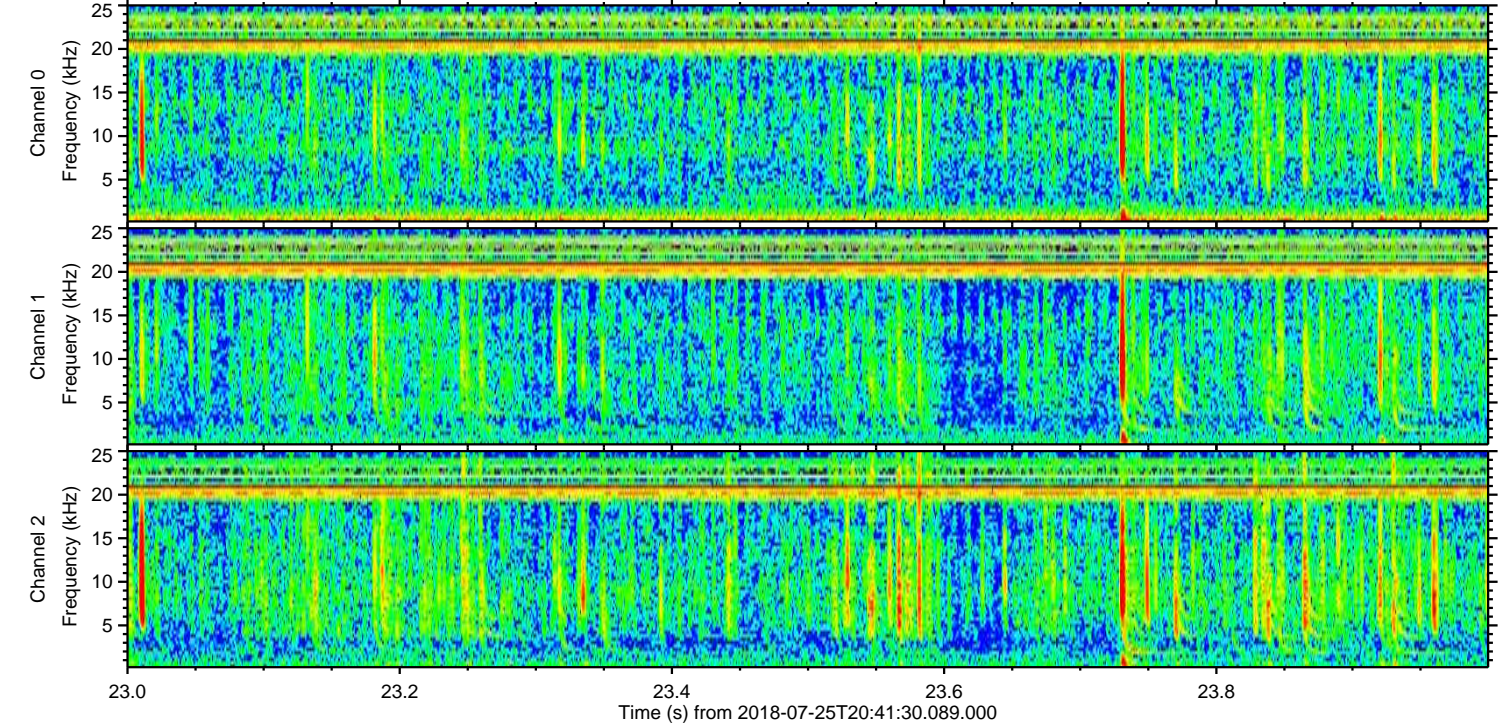
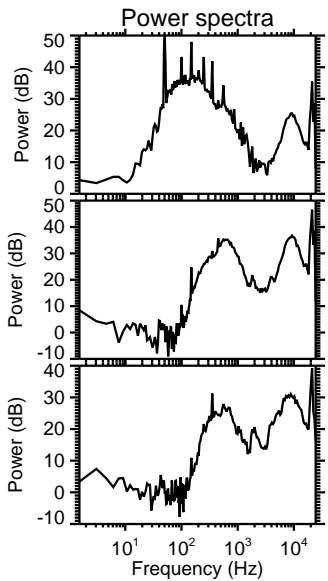
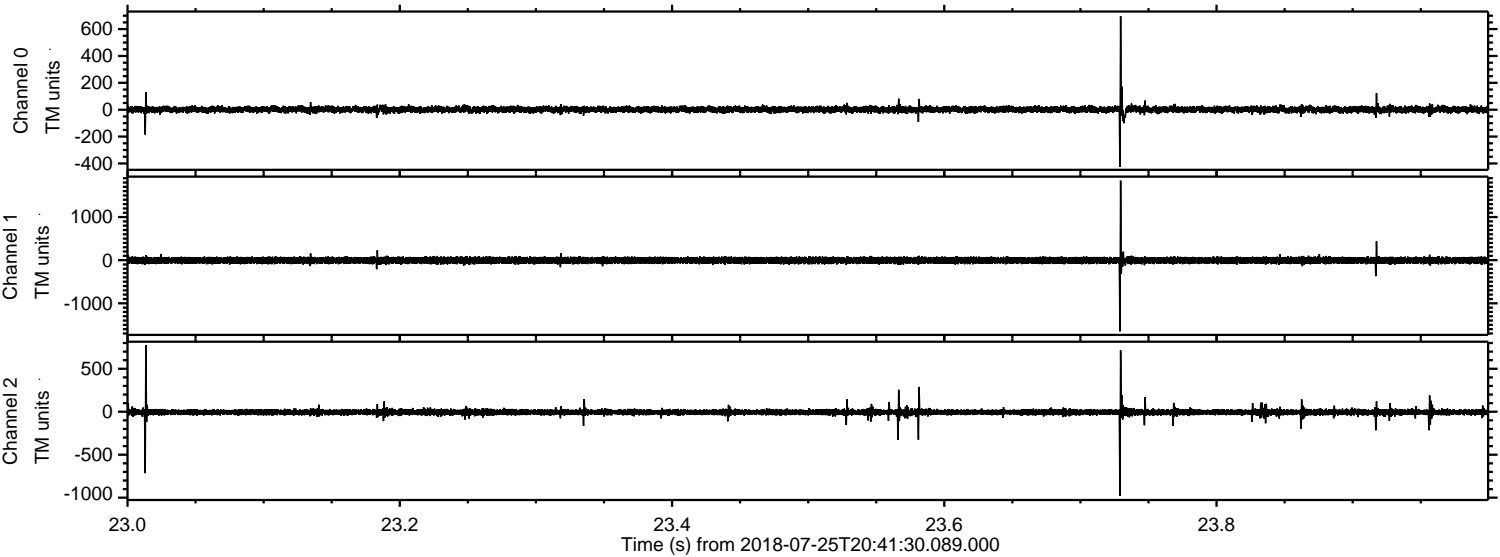
Processed Wed Jul 25 22:49:06 2018 by ELM ver.2012-10-06 from 001__elm20180725_204129__dat00.bin



Processed Wed Jul 25 22:49:07 2018 by ELM ver.2012-10-06 from 001__elm20180725_204129__dat00.bin



Processed Wed Jul 25 22:49:08 2018 by ELM ver.2012-10-06 from 001__elm20180725_204129__dat00.bin

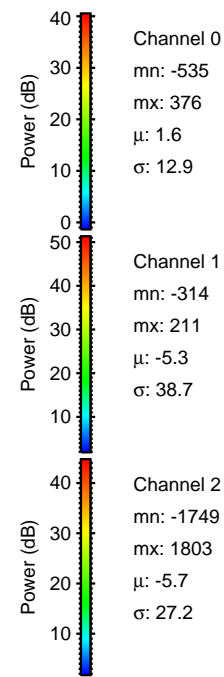
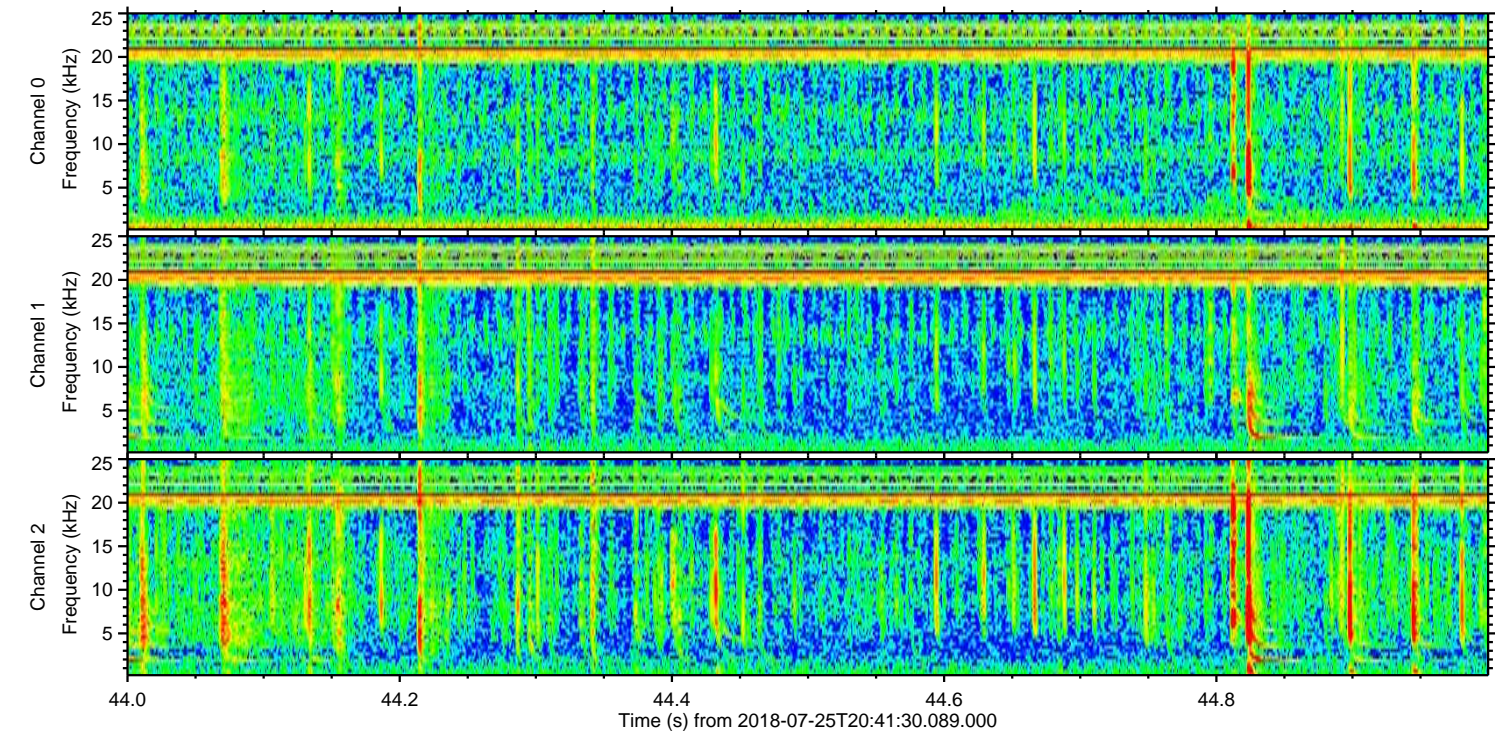
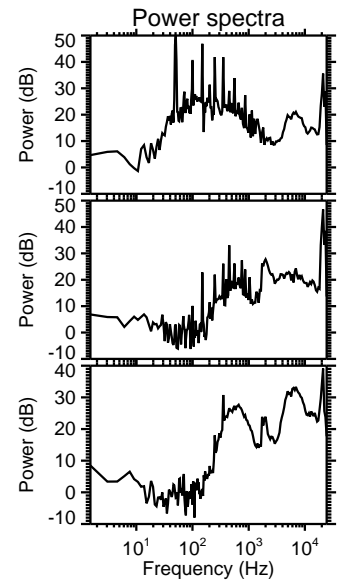
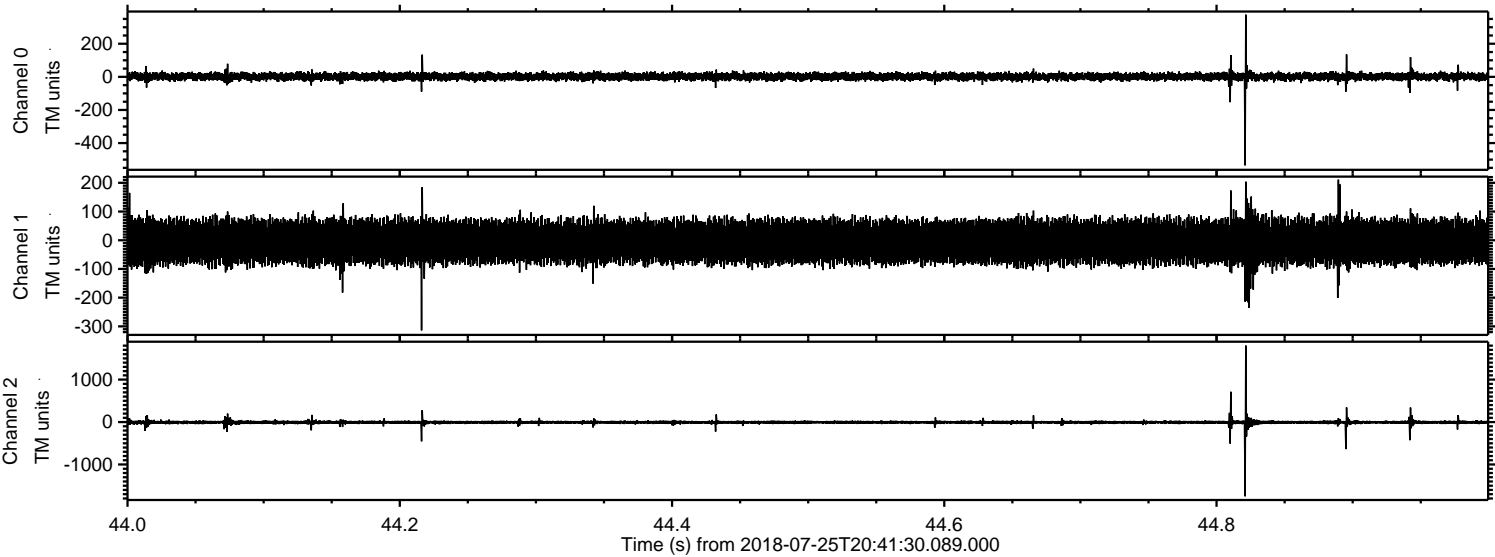


Channel 0
mn: -426
mx: 696
 μ : 1.5
 σ : 13.6

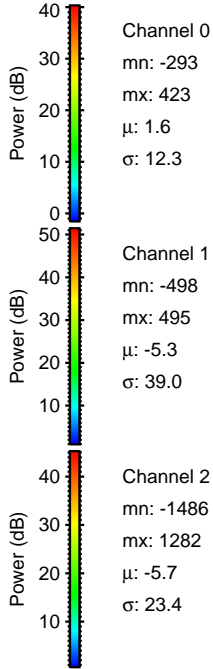
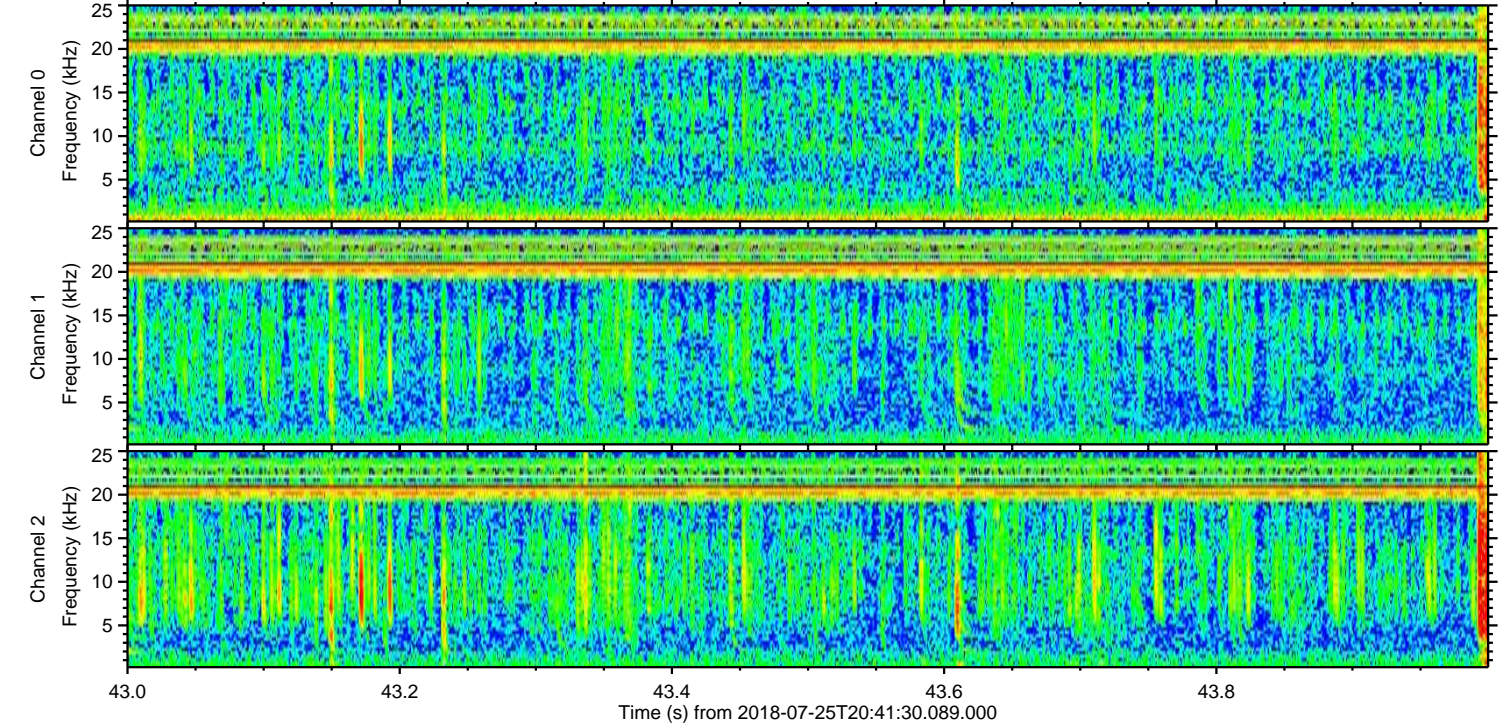
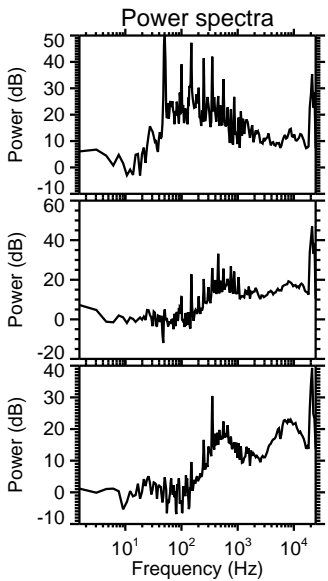
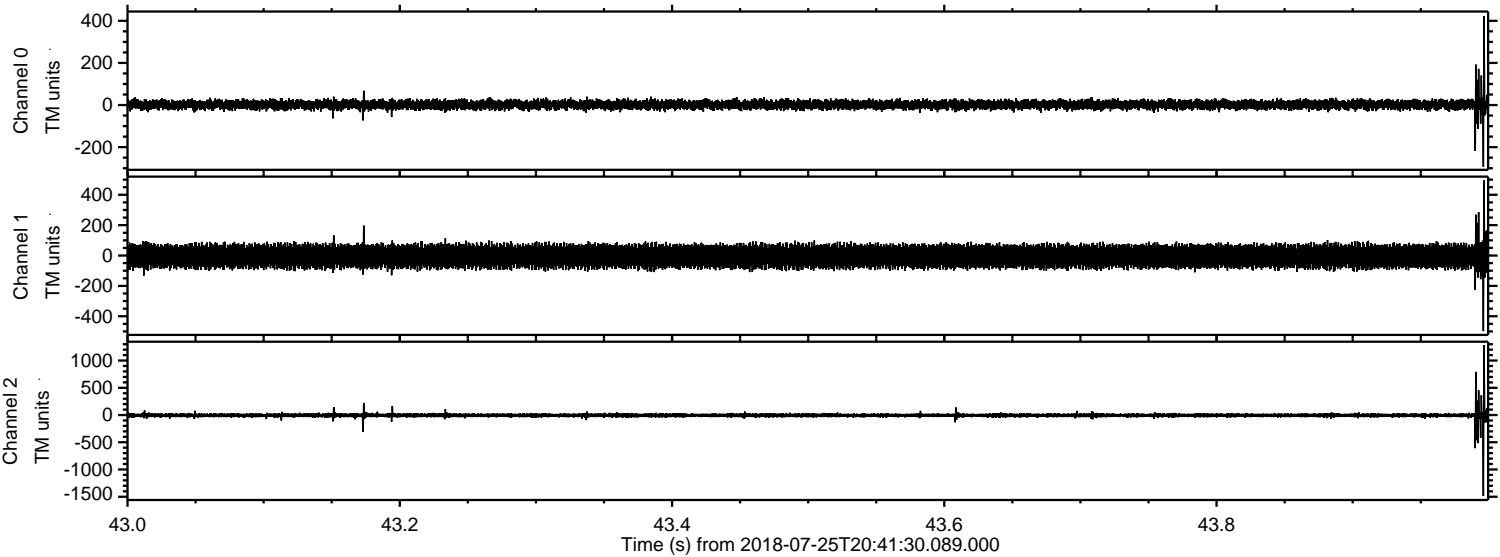
Channel 1
mn: -1651
mx: 1845
 μ : -5.3
 σ : 42.3

Channel 2
mn: -978
mx: 776
 μ : -5.7
 σ : 21.8

Processed Wed Jul 25 22:49:09 2018 by ELM ver.2012-10-06 from 001__elm20180725_204129__dat00.bin



Processed Wed Jul 25 22:49:09 2018 by ELM ver.2012-10-06 from 001__elm20180725_204129__dat00.bin



Processed Wed Jul 25 22:49:10 2018 by ELM ver.2012-10-06 from 001__elm20180725_204129__dat00.bin

