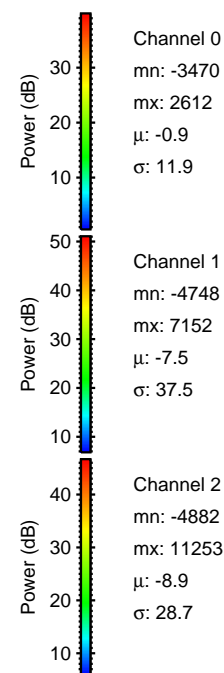
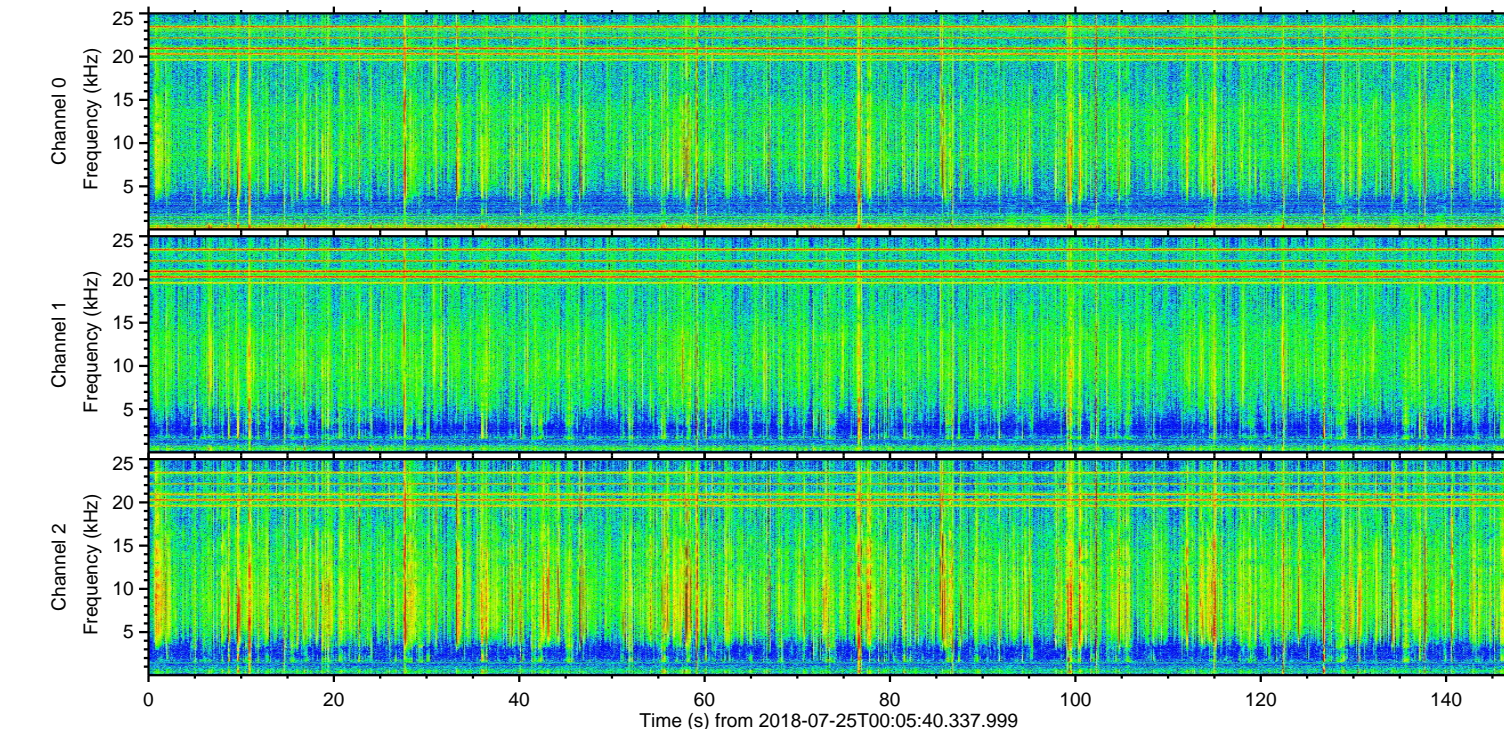
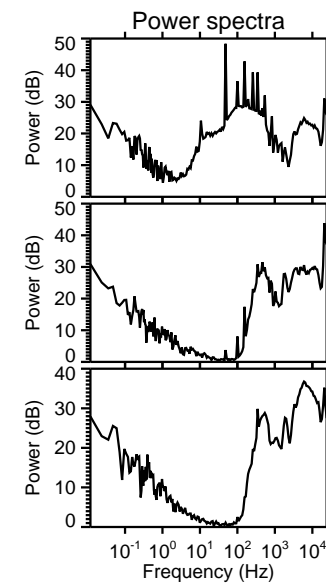
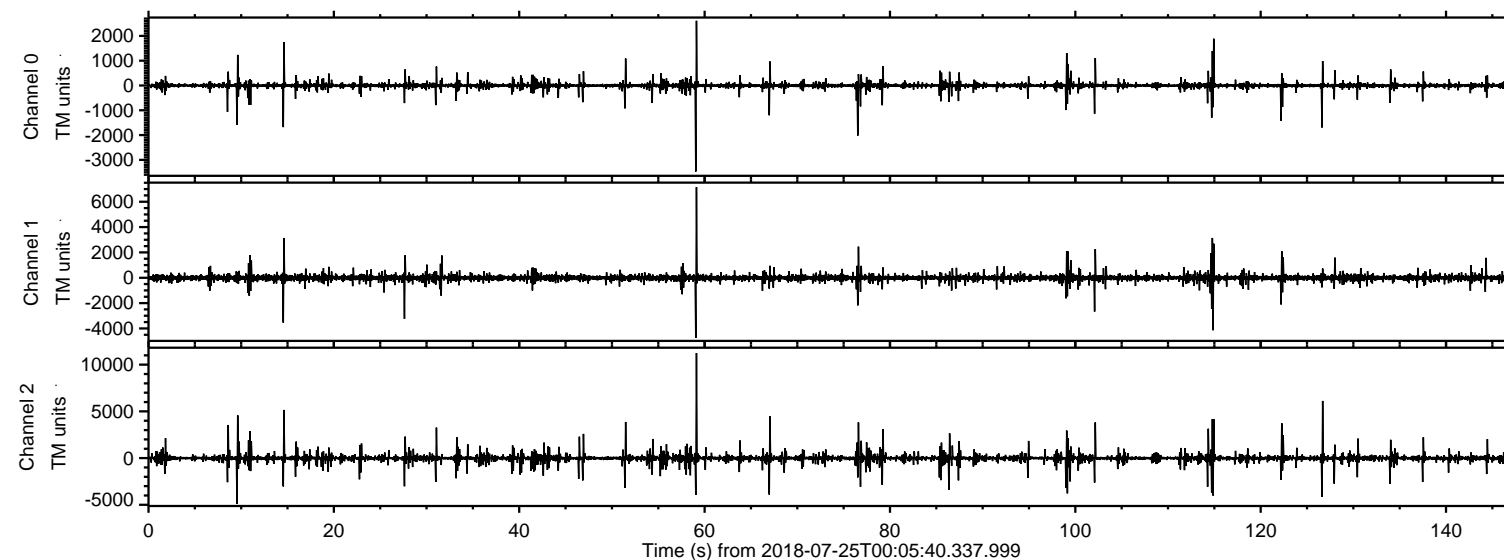
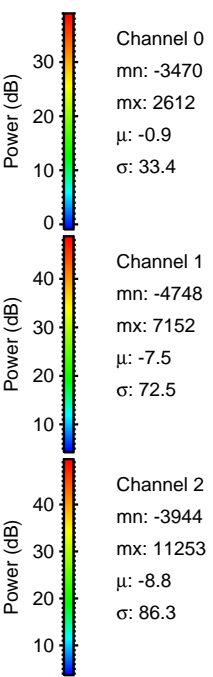
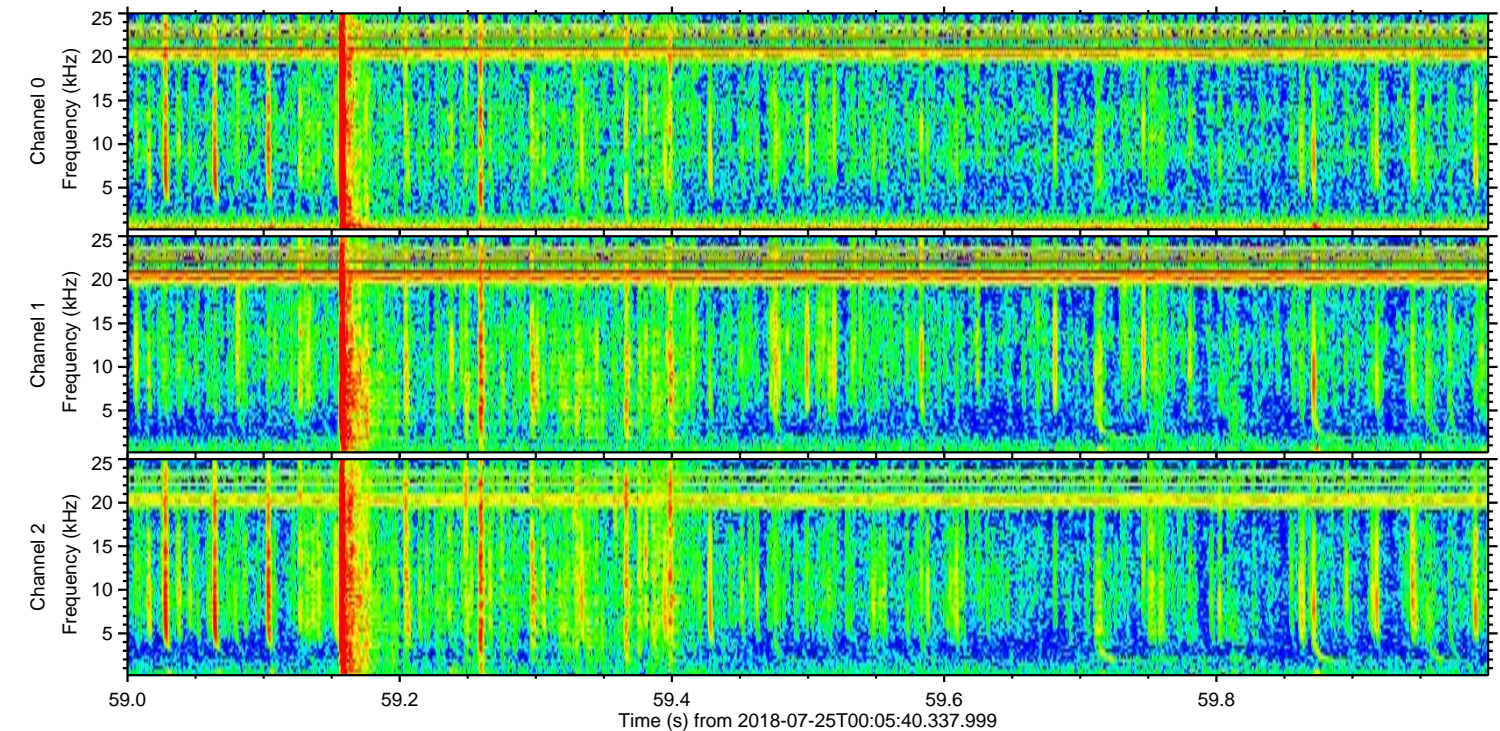
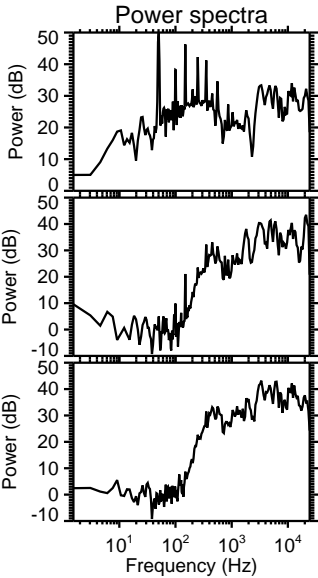
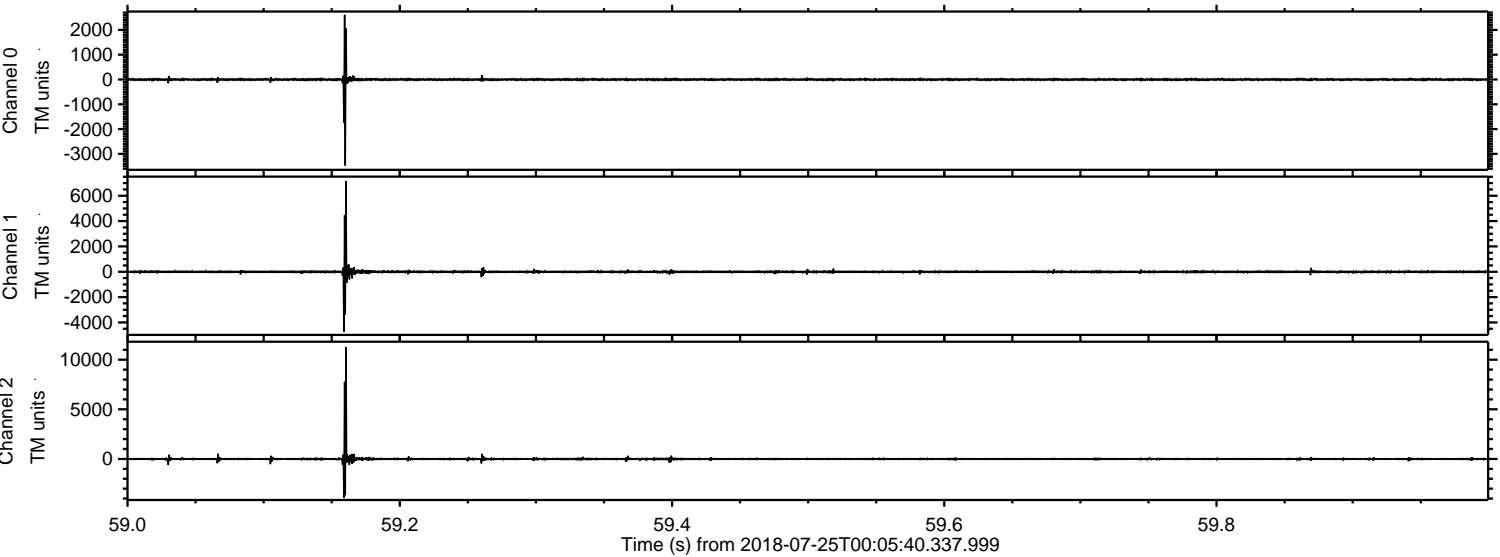


ELMAVAN 3D WAVEFORMS (Measured data sampled at 50 kHz) 51000 packets of 144 samples from 2018-07-25T00:05:40.337.999.

Processed Wed Jul 25 02:13:43 2018 by ELM ver.2012-10-06 from 001__elm20180725_000539__dat00.bin

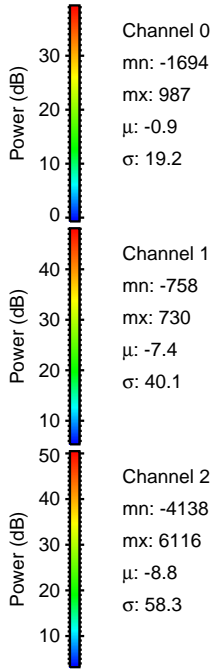
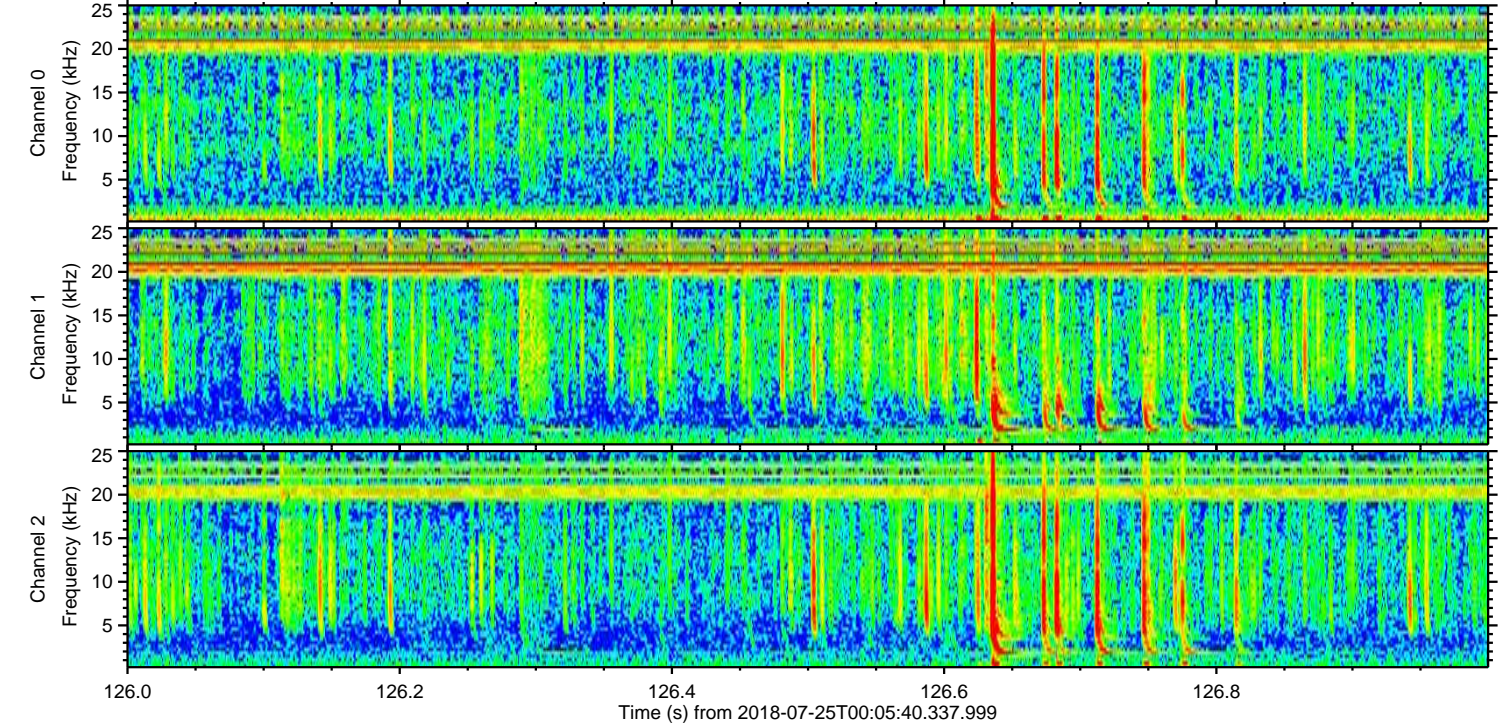
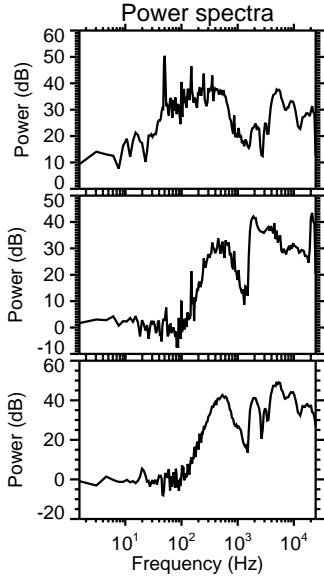
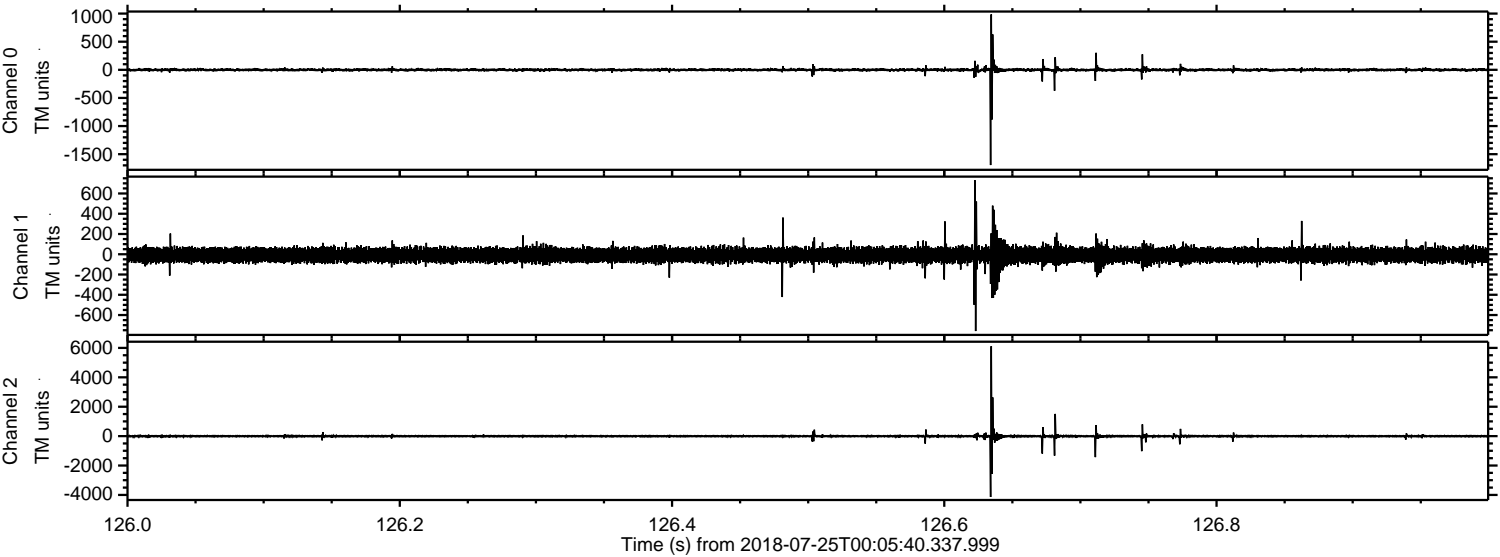


Processed Wed Jul 25 02:13:48 2018 by ELM ver.2012-10-06 from 001__elm20180725_000539__dat00.bin



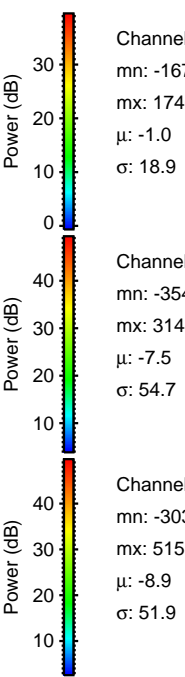
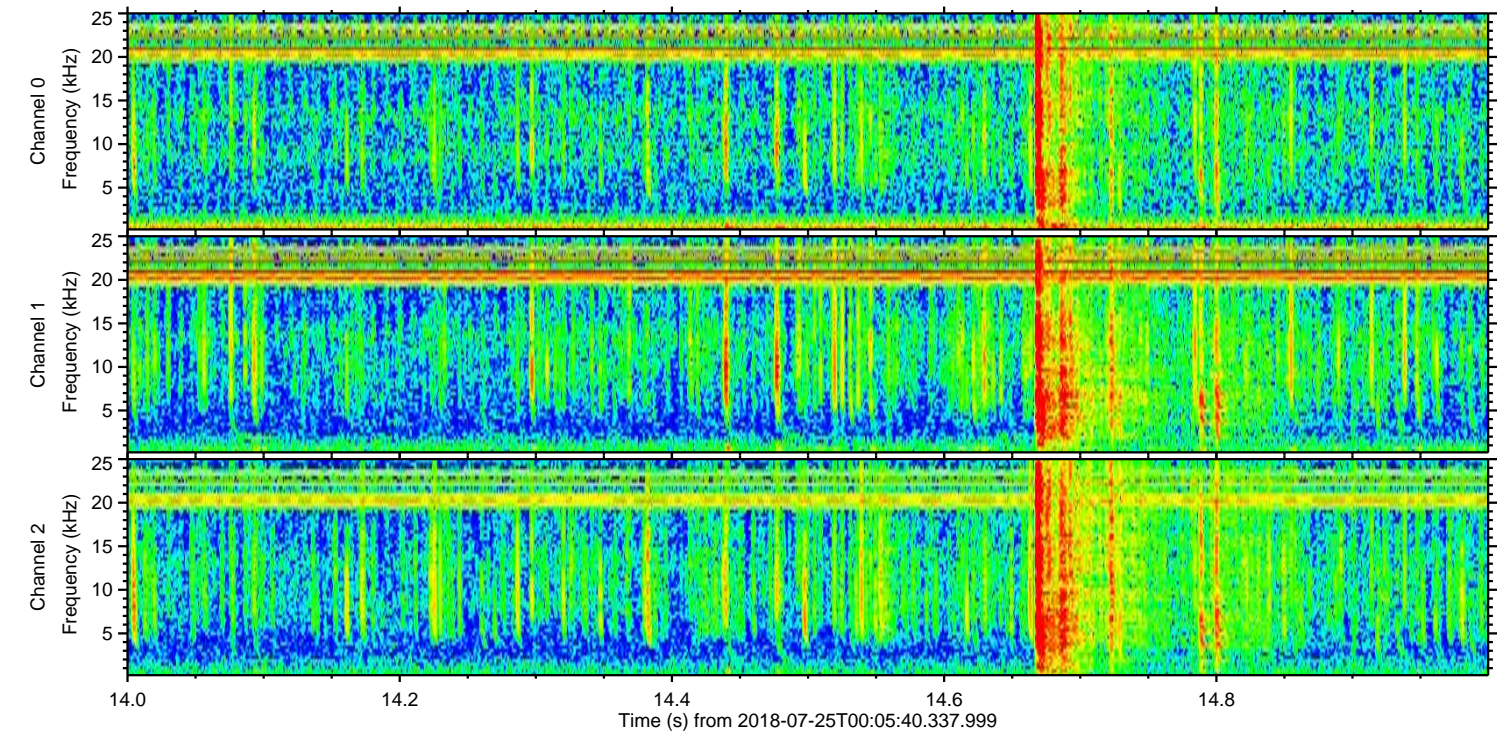
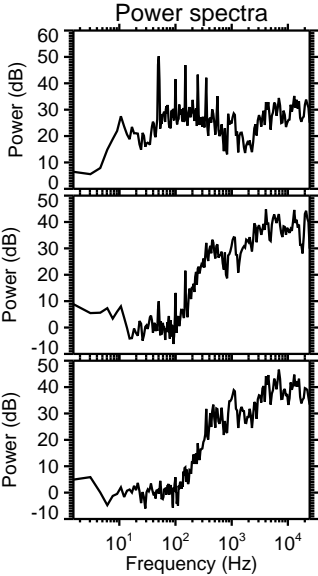
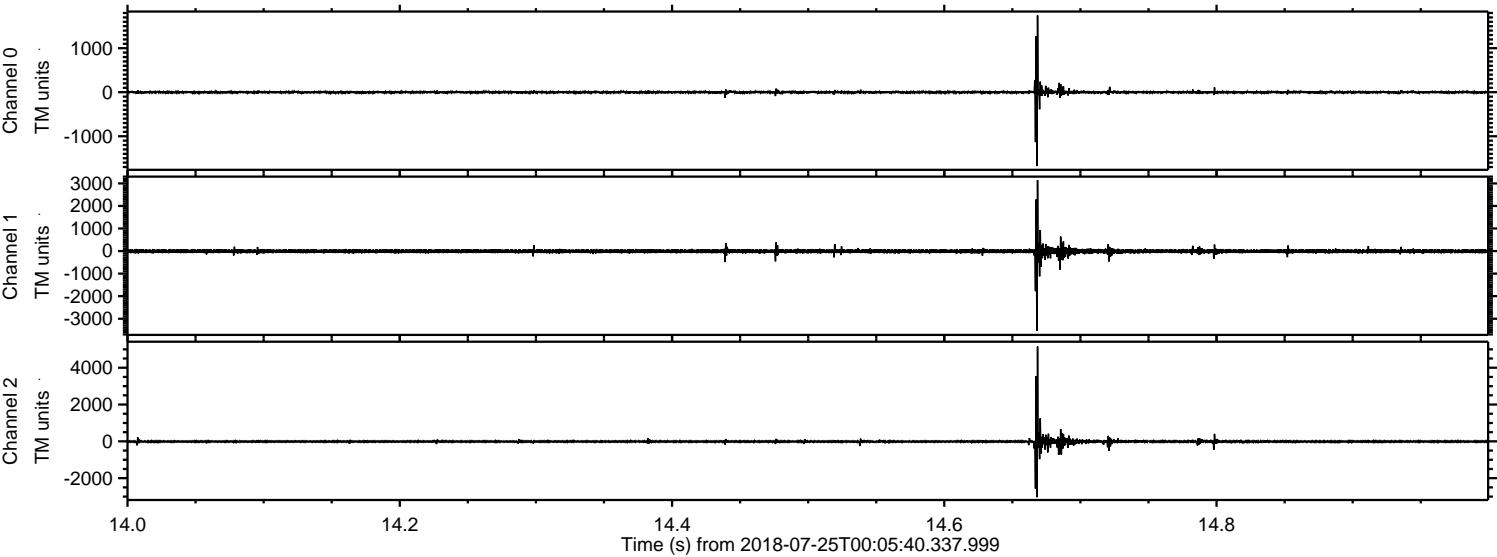
ELMAVAN 3D WAVEFORMS (Measured data sampled at 50 kHz) 51000 packets of 144 samples from 2018-07-25T00:05:40.337.999. Part 127/147

Processed Wed Jul 25 02:13:49 2018 by ELM ver.2012-10-06 from 001__elm20180725_000539__dat00.bin



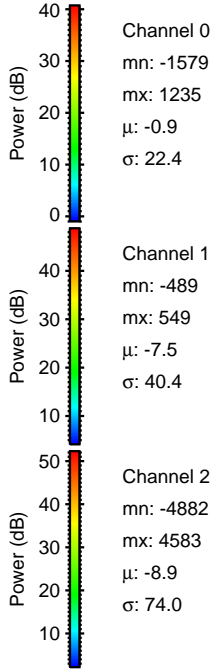
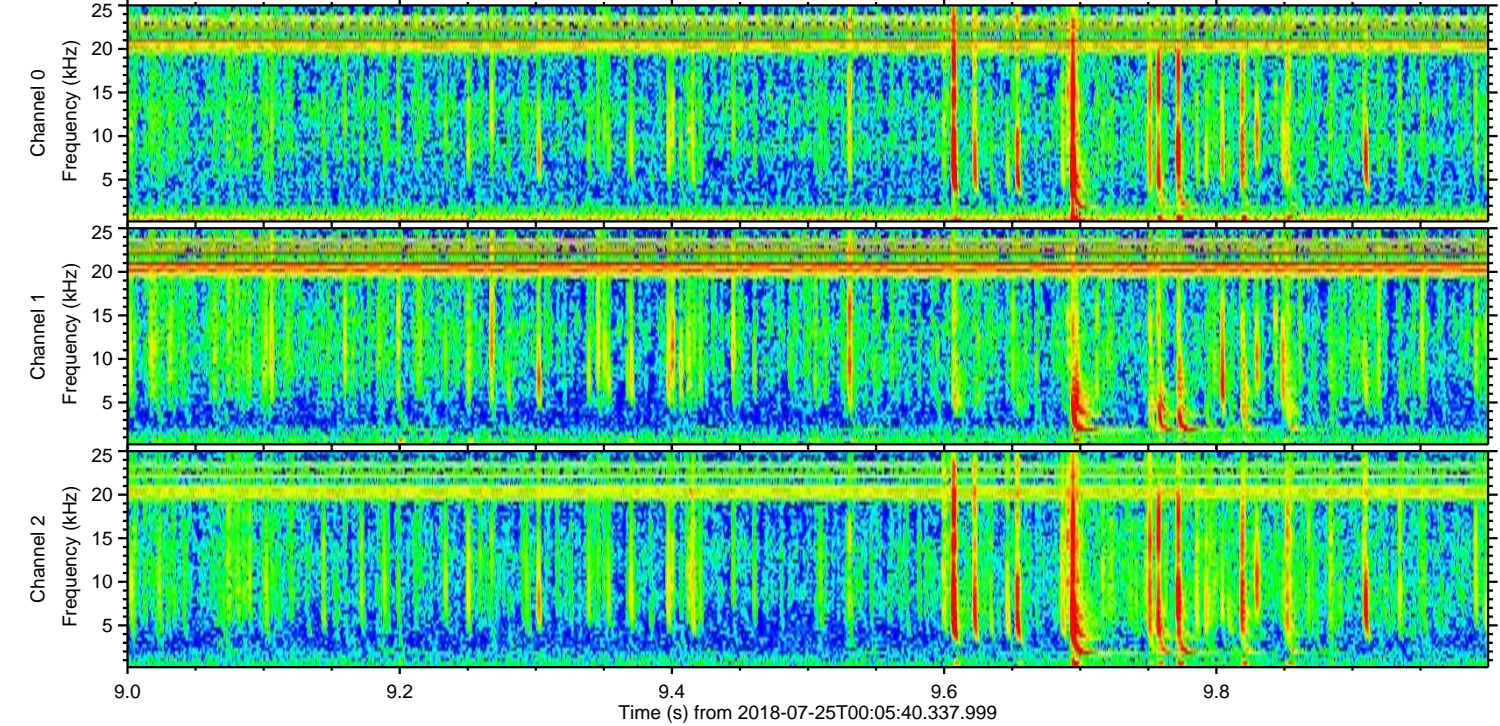
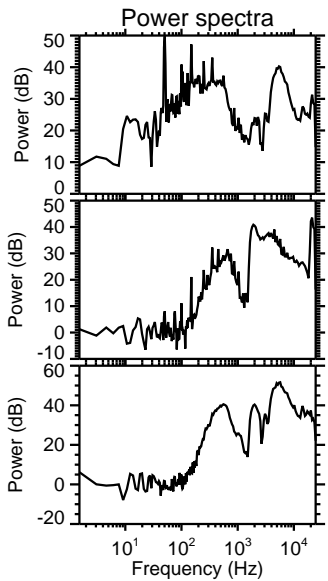
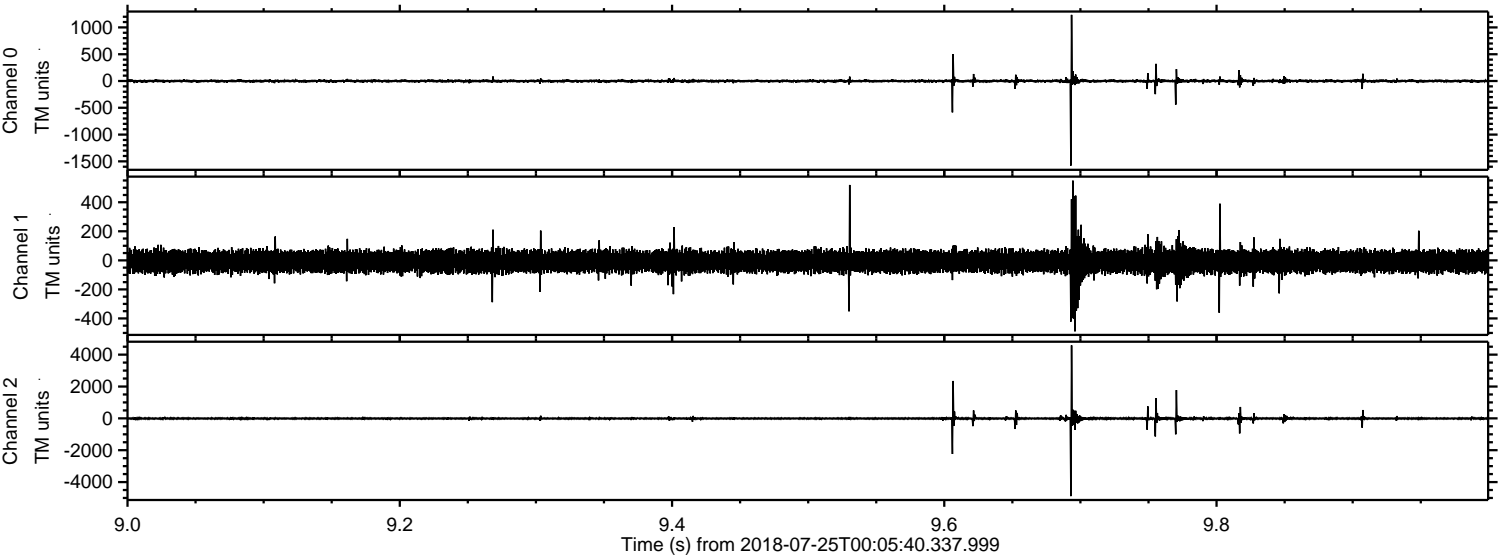
ELMAVAN 3D WAVEFORMS (Measured data sampled at 50 kHz) 51000 packets of 144 samples from 2018-07-25T00:05:40.337.999. Part 15/147

Processed Wed Jul 25 02:13:50 2018 by ELM ver.2012-10-06 from 001__elm20180725_000539__dat00.bin

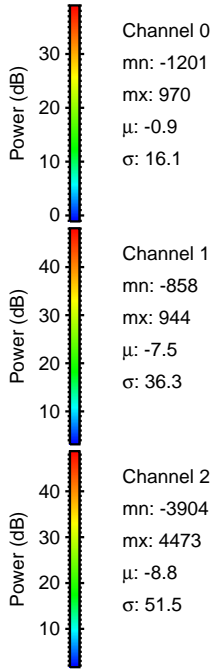
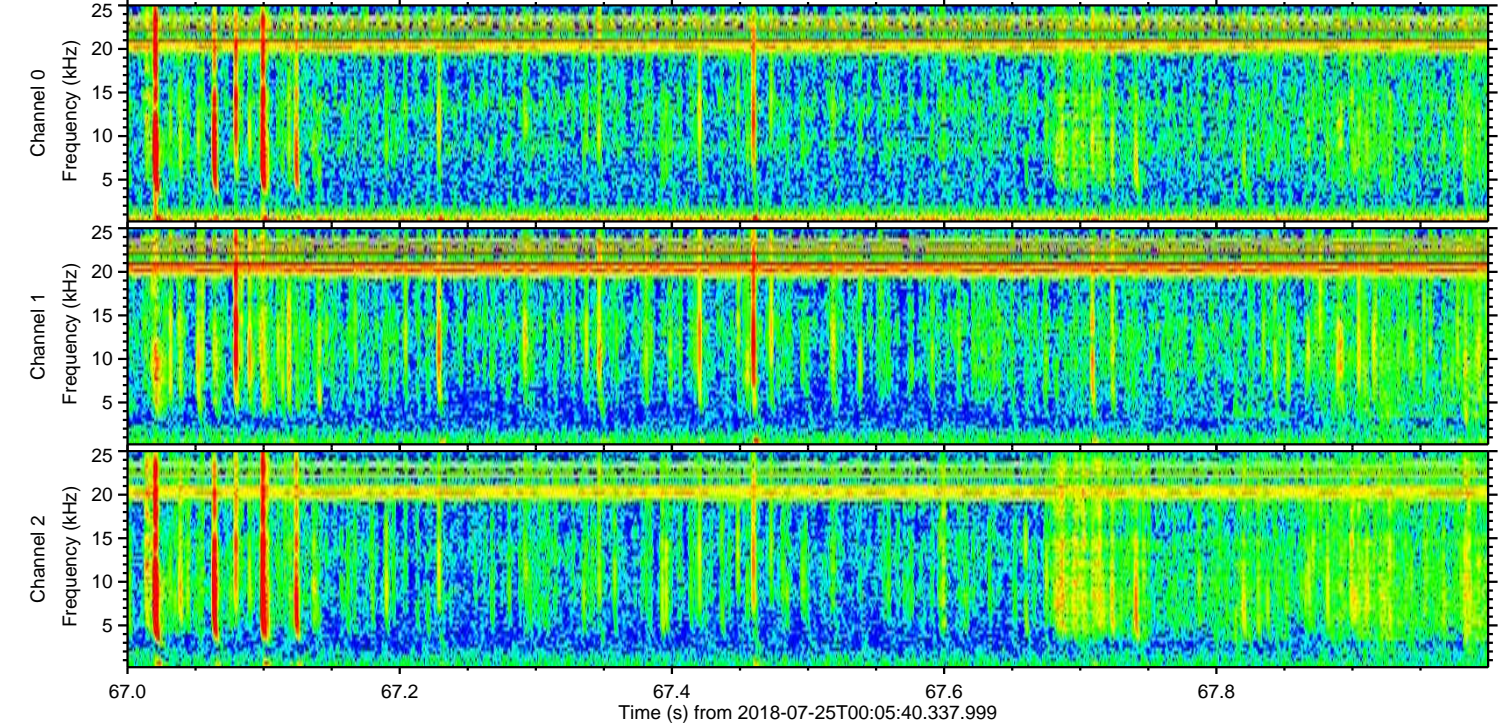
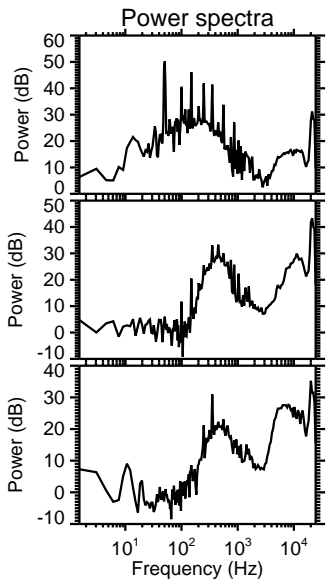
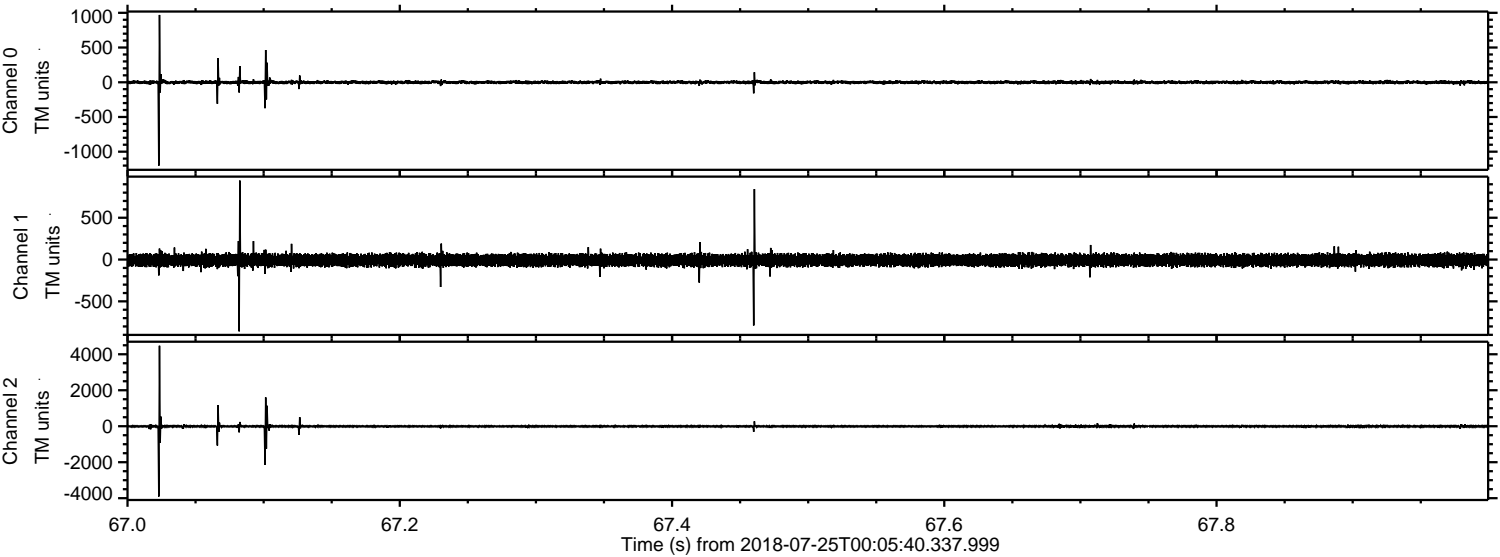


ELMAVAN 3D WAVEFORMS (Measured data sampled at 50 kHz) 51000 packets of 144 samples from 2018-07-25T00:05:40.337.999. Part 10/147

Processed Wed Jul 25 02:13:50 2018 by ELM ver.2012-10-06 from 001__elm20180725_000539__dat00.bin



Processed Wed Jul 25 02:13:51 2018 by ELM ver.2012-10-06 from 001__elm20180725_000539__dat00.bin



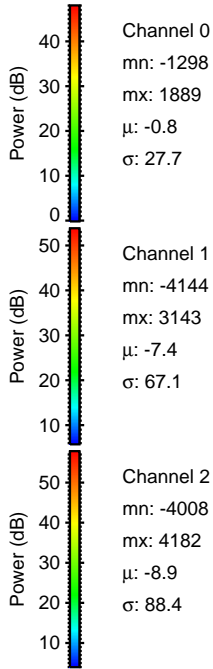
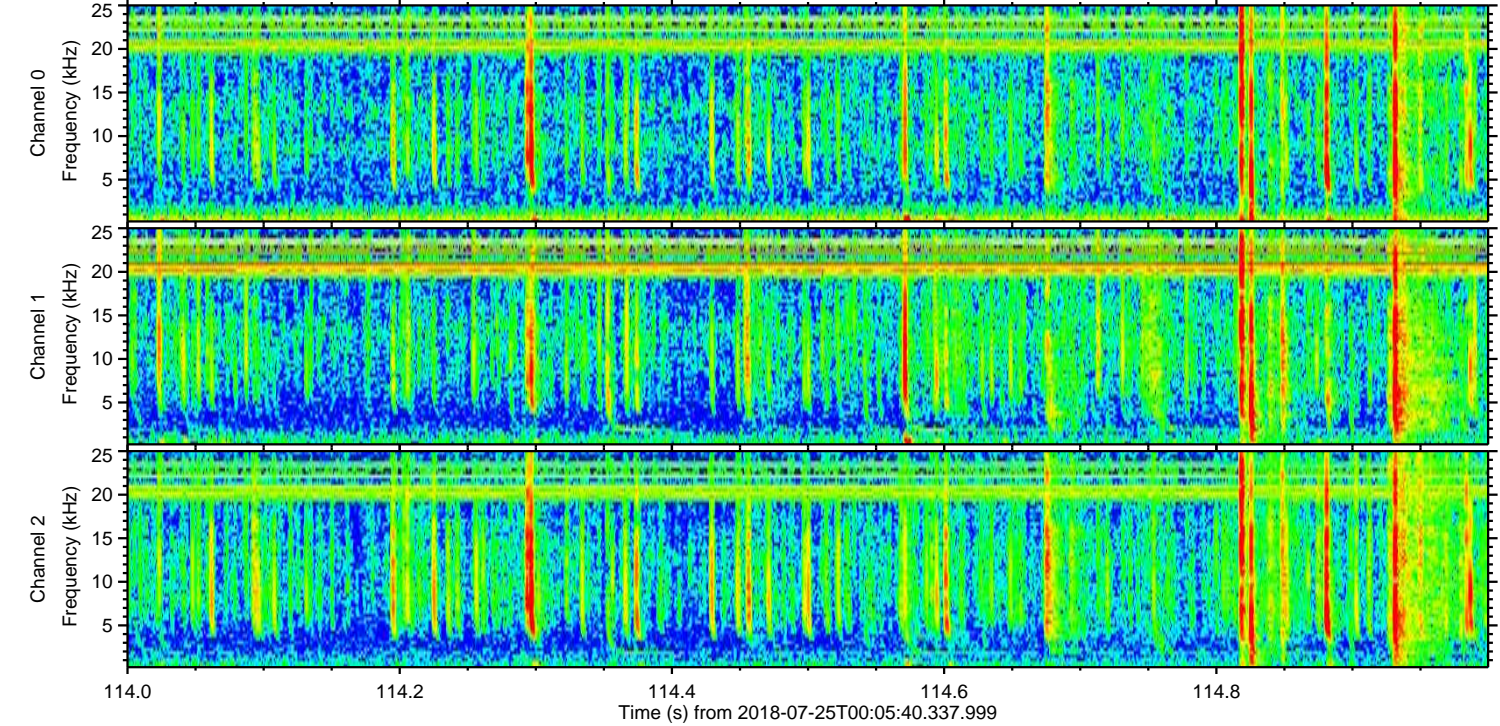
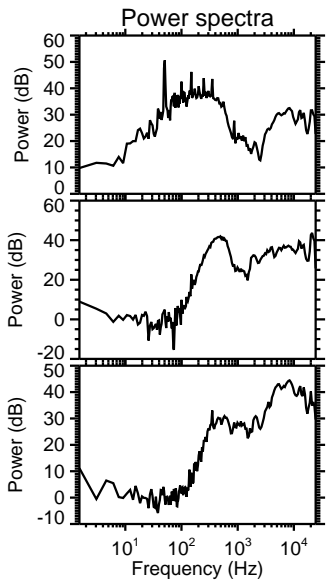
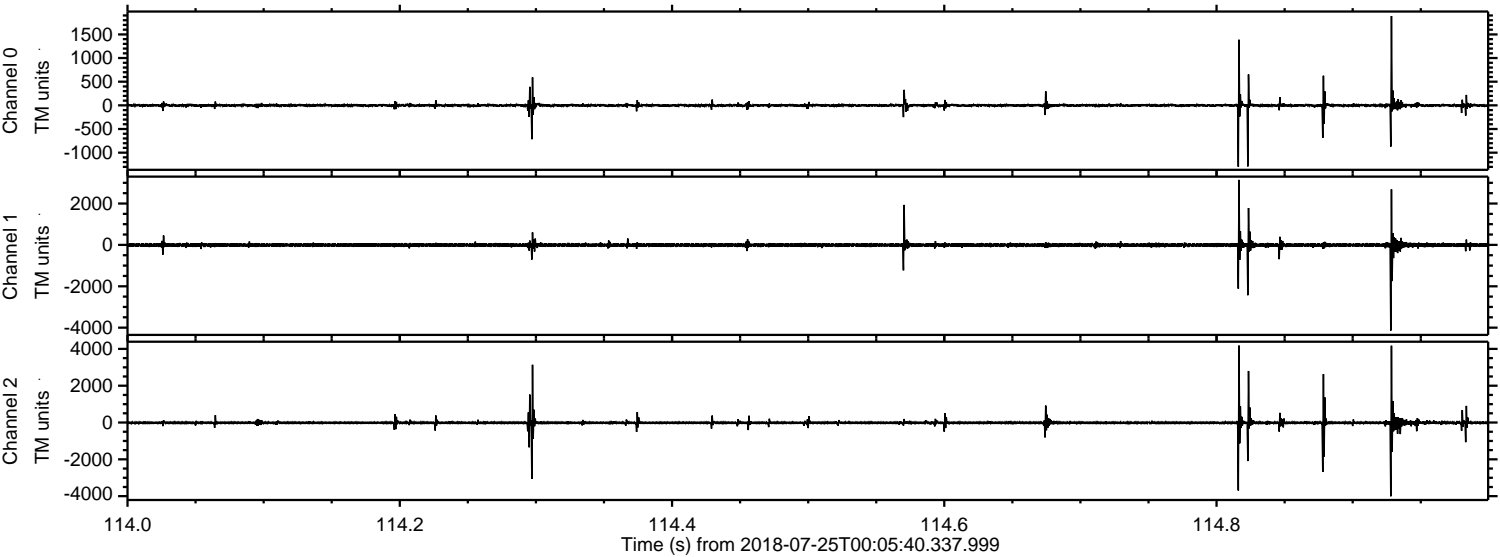
Channel 0
mn: -1201
mx: 970
 μ : -0.9
 σ : 16.1

Channel 1
mn: -858
mx: 944
 μ : -7.5
 σ : 36.3

Channel 2
mn: -3904
mx: 4473
 μ : -8.8
 σ : 51.5

ELMAVAN 3D WAVEFORMS (Measured data sampled at 50 kHz) 51000 packets of 144 samples from 2018-07-25T00:05:40.337.999. Part 115/147

Processed Wed Jul 25 02:13:52 2018 by ELM ver.2012-10-06 from 001__elm20180725_000539__dat00.bin

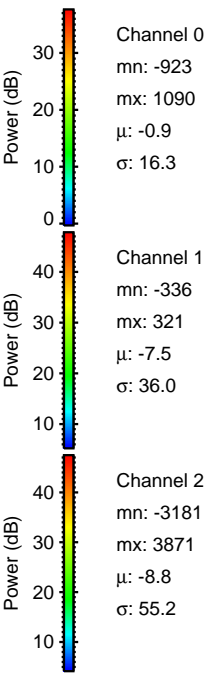
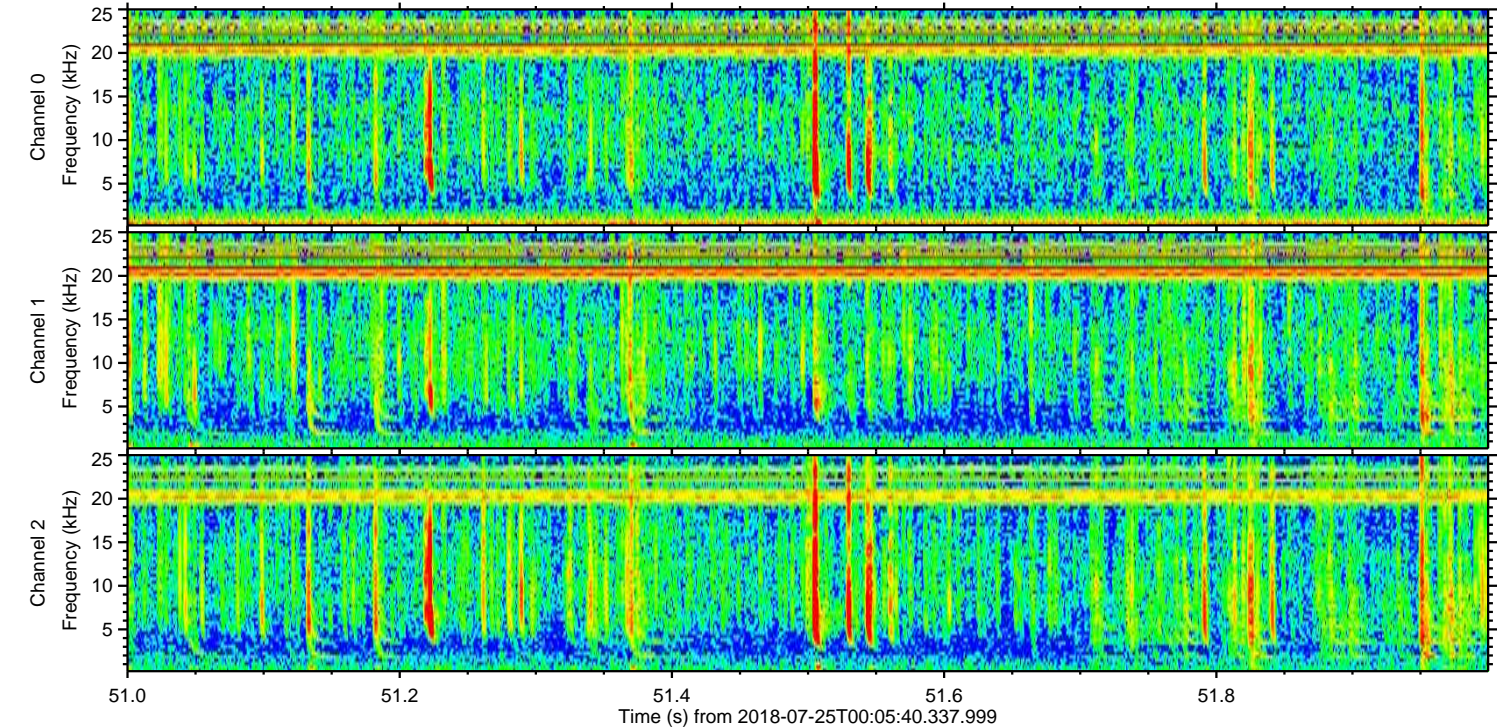
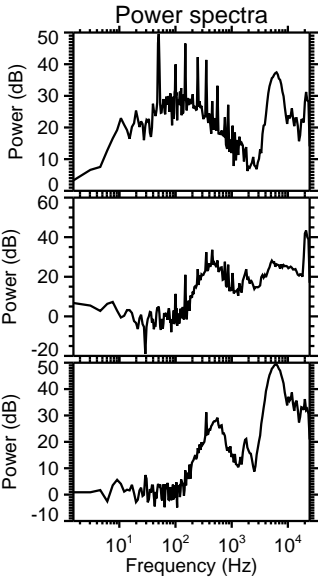
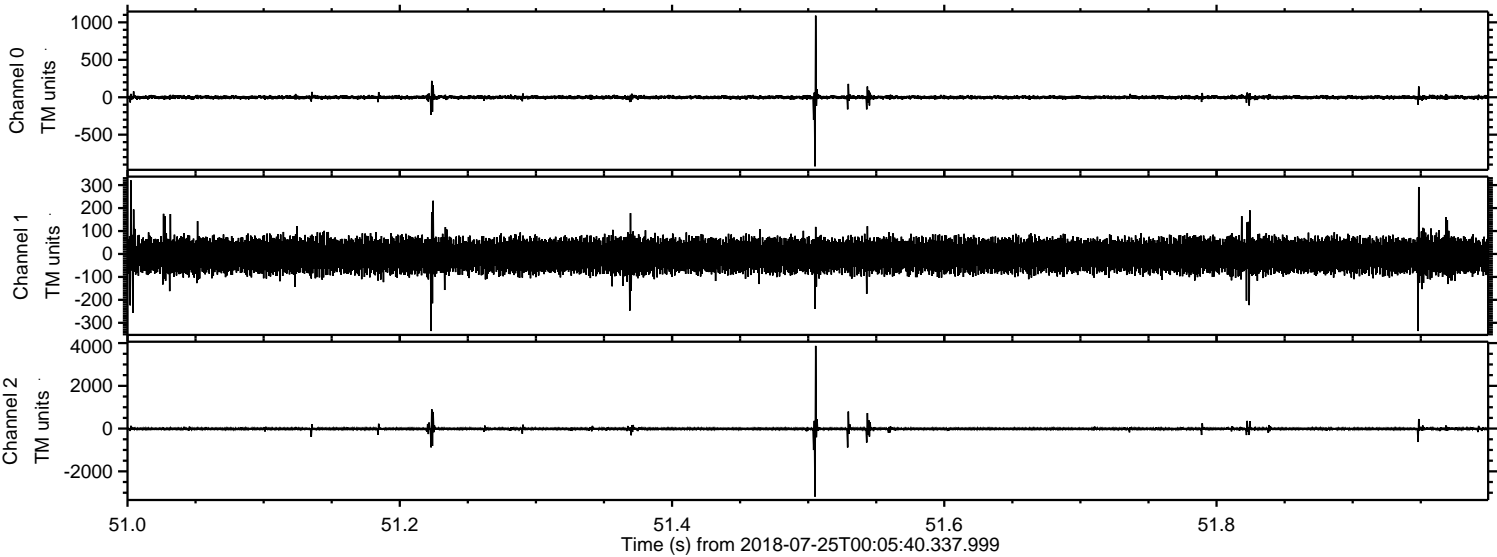


Channel 0
mn: -1298
mx: 1889
 μ : -0.8
 σ : 27.7

Channel 1
mn: -4144
mx: 3143
 μ : -7.4
 σ : 67.1

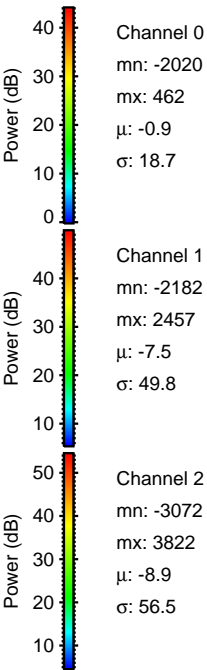
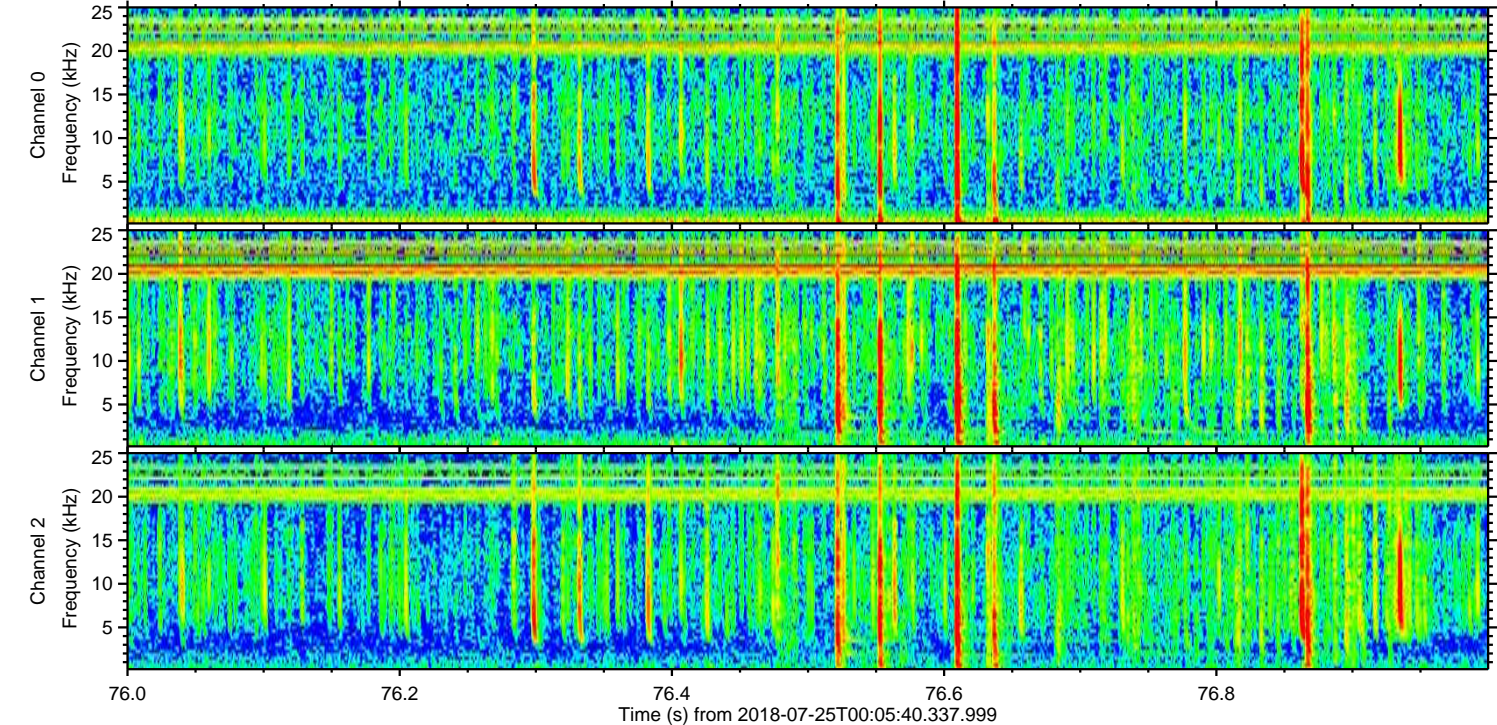
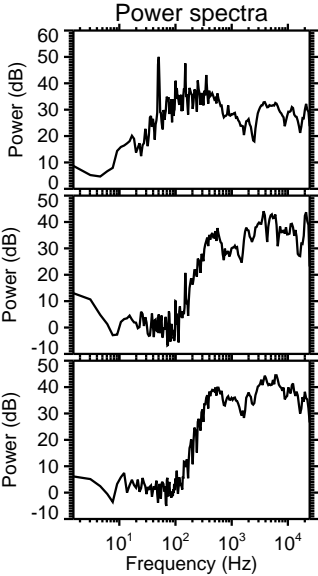
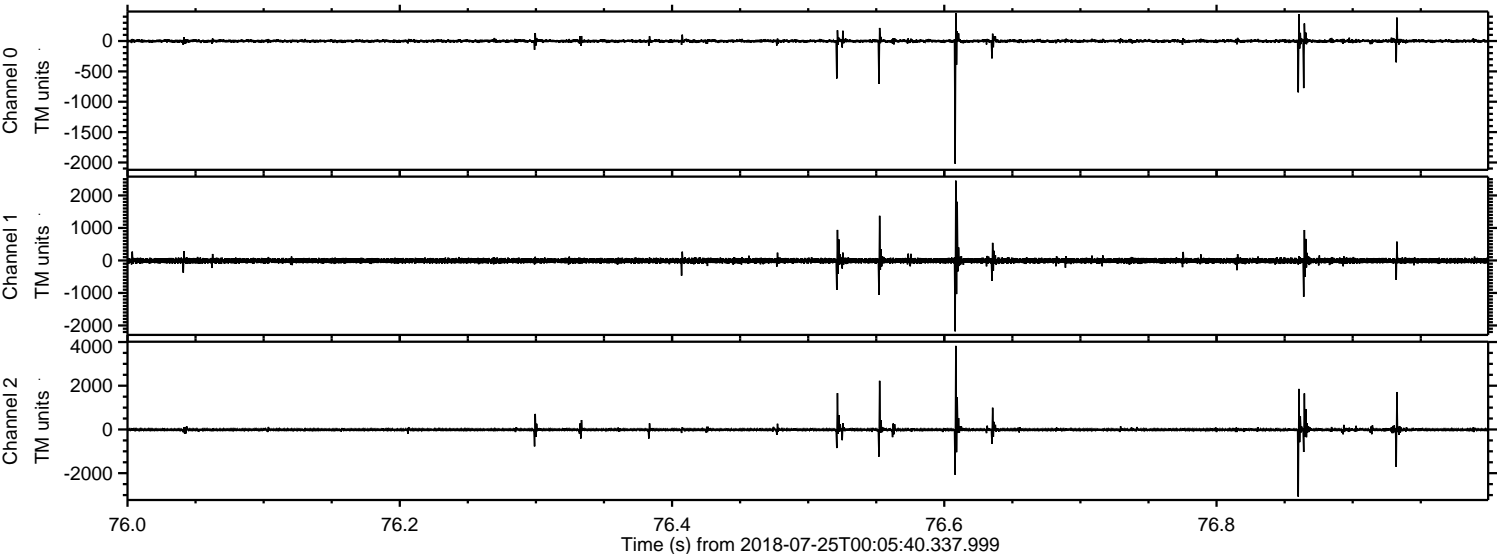
Channel 2
mn: -4008
mx: 4182
 μ : -8.9
 σ : 88.4

Processed Wed Jul 25 02:13:52 2018 by ELM ver.2012-10-06 from 001__elm20180725_000539__dat00.bin



ELMAVAN 3D WAVEFORMS (Measured data sampled at 50 kHz) 51000 packets of 144 samples from 2018-07-25T00:05:40.337.999. Part 77/147

Processed Wed Jul 25 02:13:53 2018 by ELM ver.2012-10-06 from 001__elm20180725_000539__dat00.bin



Power spectra

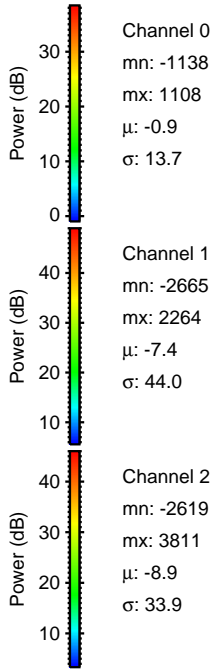
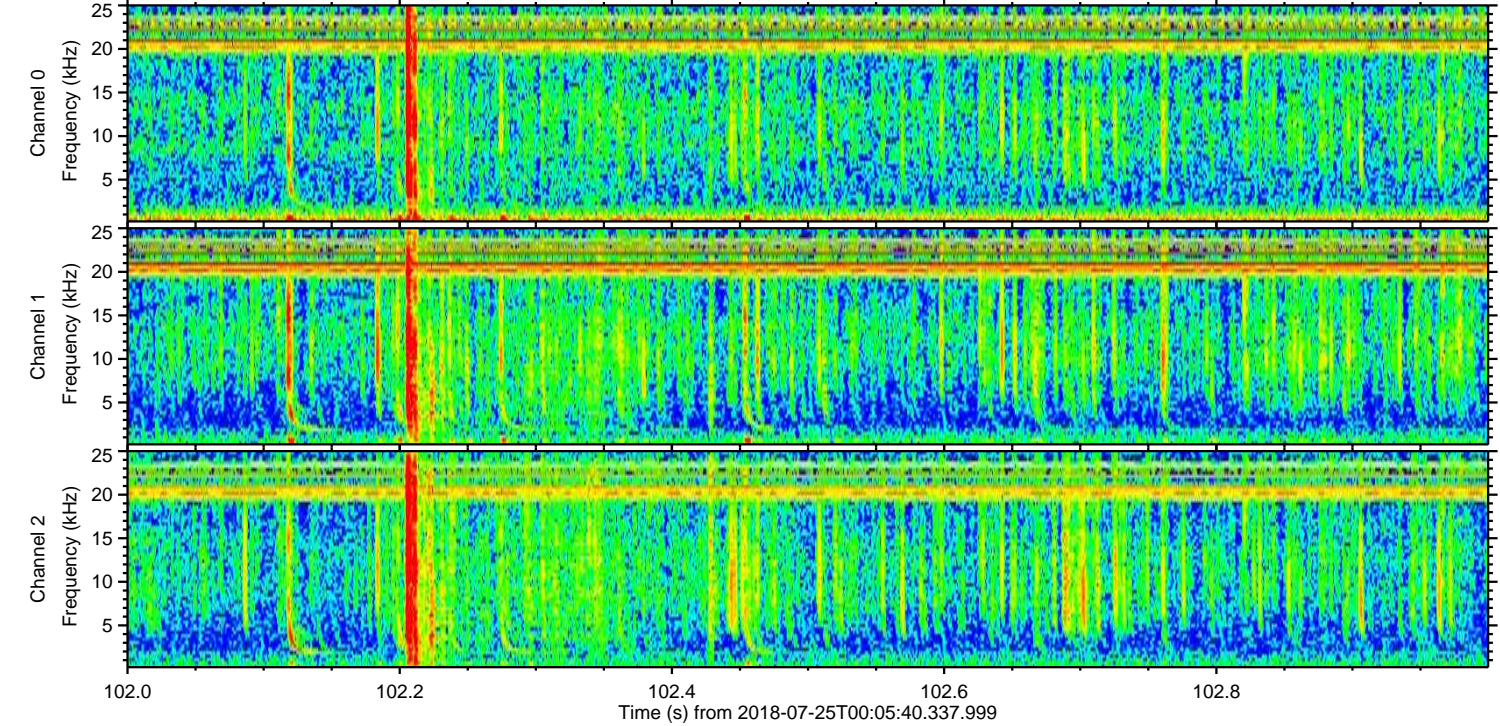
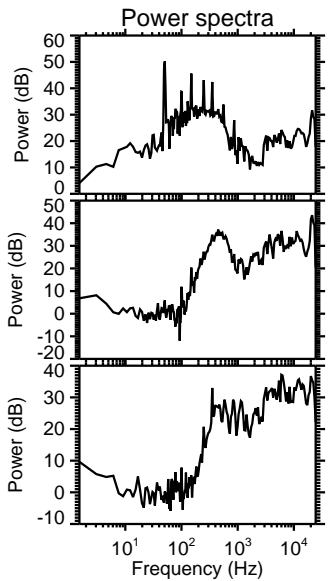
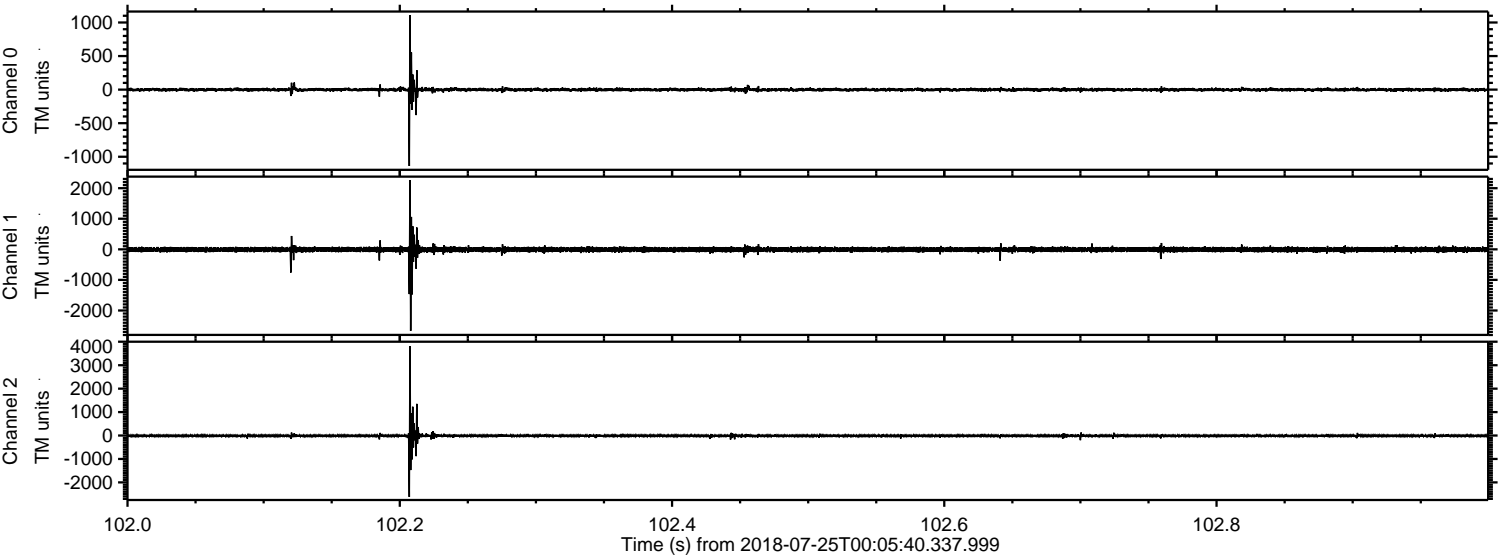
Channel 0
mn: -2020
mx: 462
 μ : -0.9
 σ : 18.7

Channel 1
mn: -2182
mx: 2457
 μ : -7.5
 σ : 49.8

Channel 2
mn: -3072
mx: 3822
 μ : -8.9
 σ : 56.5

ELMAVAN 3D WAVEFORMS (Measured data sampled at 50 kHz) 51000 packets of 144 samples from 2018-07-25T00:05:40.337.999. Part 103/147

Processed Wed Jul 25 02:13:54 2018 by ELM ver.2012-10-06 from 001__elm20180725_000539__dat00.bin



Processed Wed Jul 25 02:13:54 2018 by ELM ver.2012-10-06 from 001__elm20180725_000539__dat00.bin

